

Interactive comment on “Comparing CFSR and conventional weather data for discharge and sediment loss modelling with SWAT in small catchments in the Ethiopian Highlands” by V. Roth and T. Lemann

V. Roth and T. Lemann

vincent.roth@cde.unibe.ch

Received and published: 9 April 2015

Please find attached a PDF file containing our response to referee comments by Claire Baffaut

Please also note the supplement to this comment:
<http://www.hydrol-earth-syst-sci-discuss.net/12/C937/2015/hessd-12-C937-2015-supplement.pdf>

Full Screen / Esc

Printer-friendly Version

Interactive Discussion

Discussion Paper



Interactive
Comment

Full Screen / Esc

Printer-friendly Version

Interactive Discussion

Discussion Paper



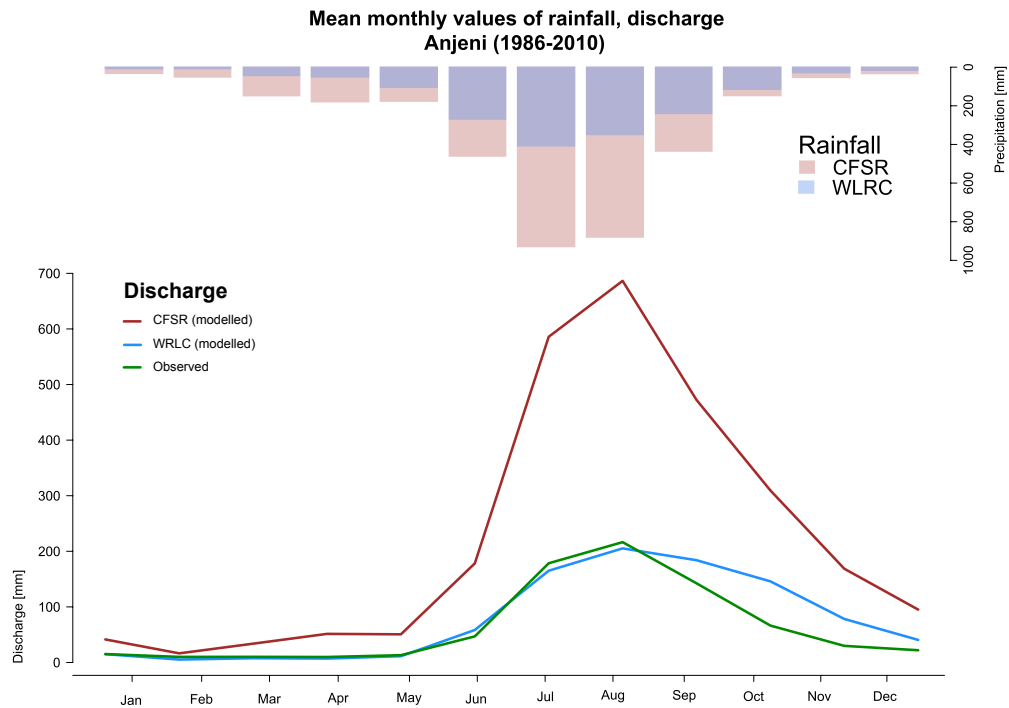


Fig. 1. Mean monthly rainfall and discharge Anjeni (Fig 4)

Full Screen / Esc

Printer-friendly Version

Interactive Discussion

Discussion Paper

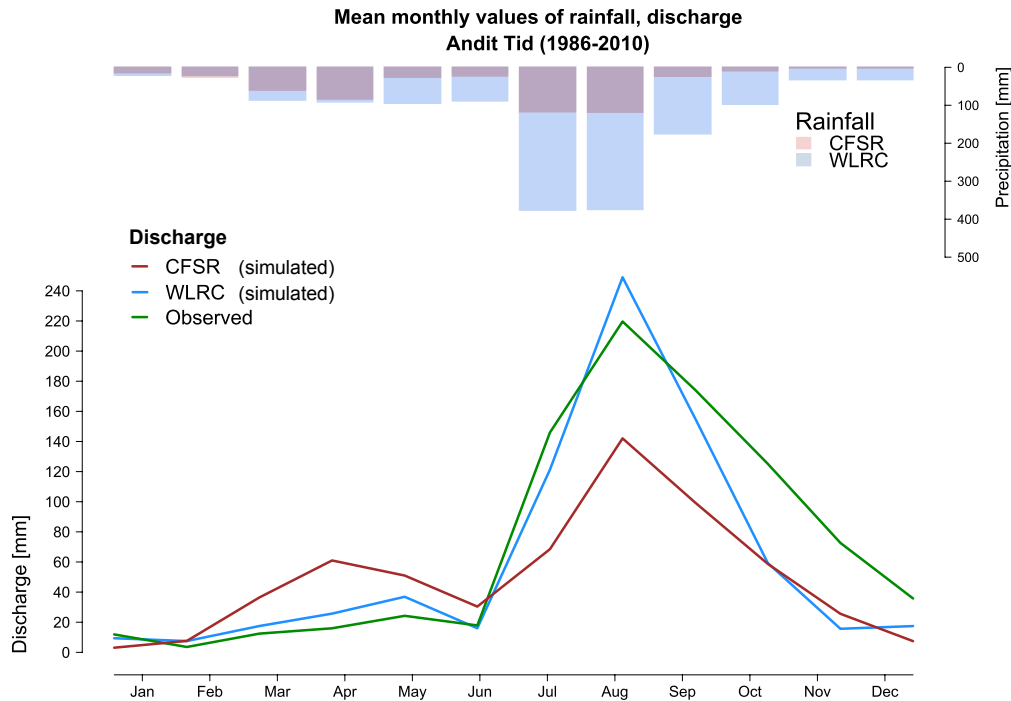


Fig. 2. Mean monthly rainfall and discharge Andit Tid (Fig 5)

Full Screen / Esc

Printer-friendly Version

Interactive Discussion

Discussion Paper

Interactive
Comment

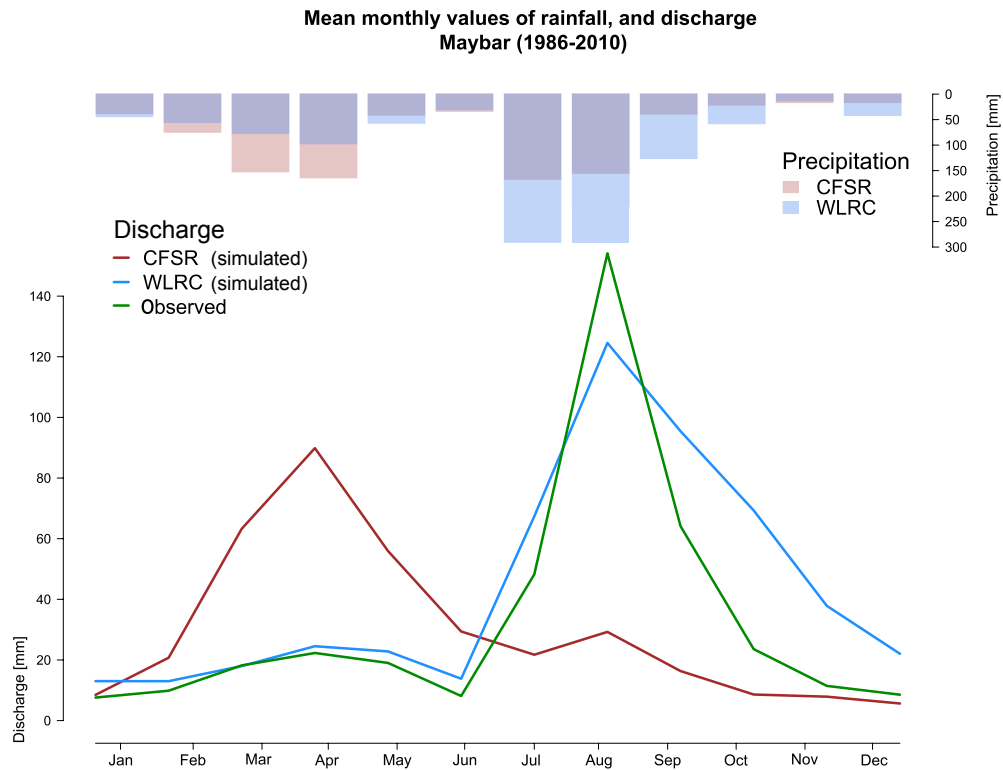


Fig. 3. Mean monthly rainfall and discharge Maybar (Fig 6)

Full Screen / Esc

Printer-friendly Version

Interactive Discussion

Discussion Paper



Interactive
Comment

Rainfall and discharge, Anjeni
monthly data
1986–2010

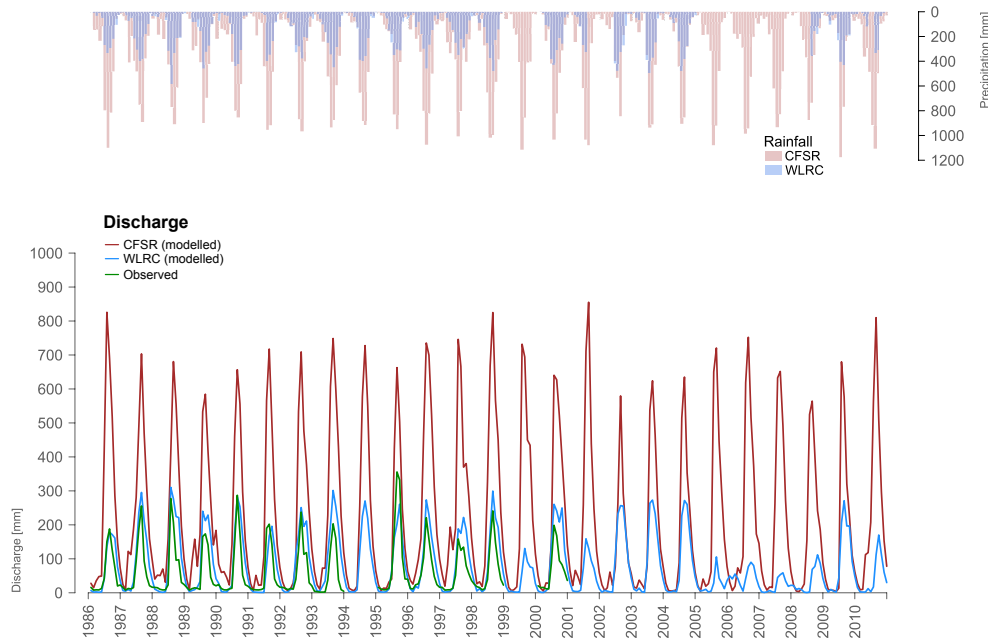


Fig. 4. Monthly rainfall and discharge all stations (new figure)

Full Screen / Esc

Printer-friendly Version

Interactive Discussion

Discussion Paper