

Interactive comment on “Comparing CFSR and conventional weather data for discharge and sediment loss modelling with SWAT in small catchments in the Ethiopian Highlands” by V. Roth and T. Lemann

V. Roth and T. Lemann

vincent.roth@cde.unibe.ch

Received and published: 9 April 2015

Please find attached a PDF file containing our response to referee comments by Claire Baffaut

Please also note the supplement to this comment:

<http://www.hydrol-earth-syst-sci-discuss.net/12/C937/2015/hessd-12-C937-2015-supplement.pdf>

C937

Interactive comment on Hydrol. Earth Syst. Sci. Discuss., 12, 2113, 2015.

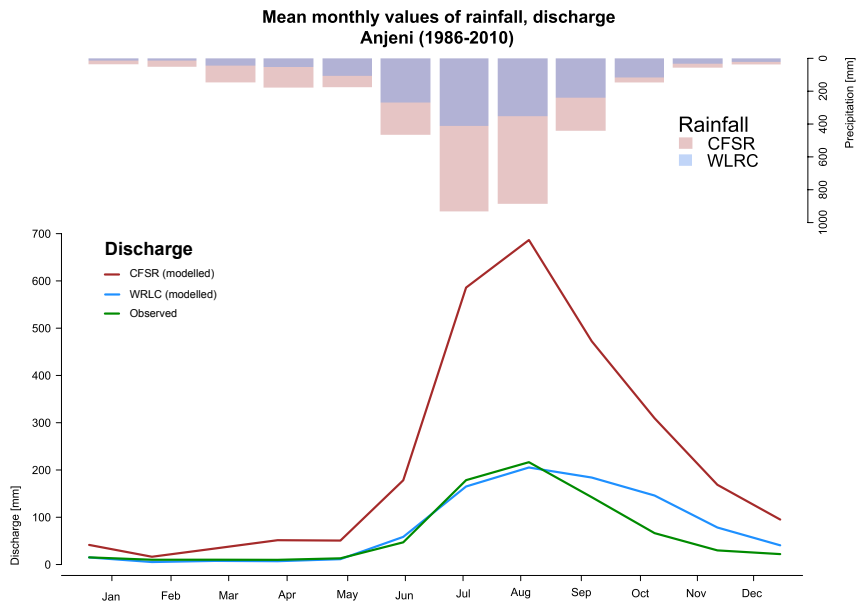


Fig. 1. Mean monthly rainfall and discharge Anjeni (Fig 4)

C939

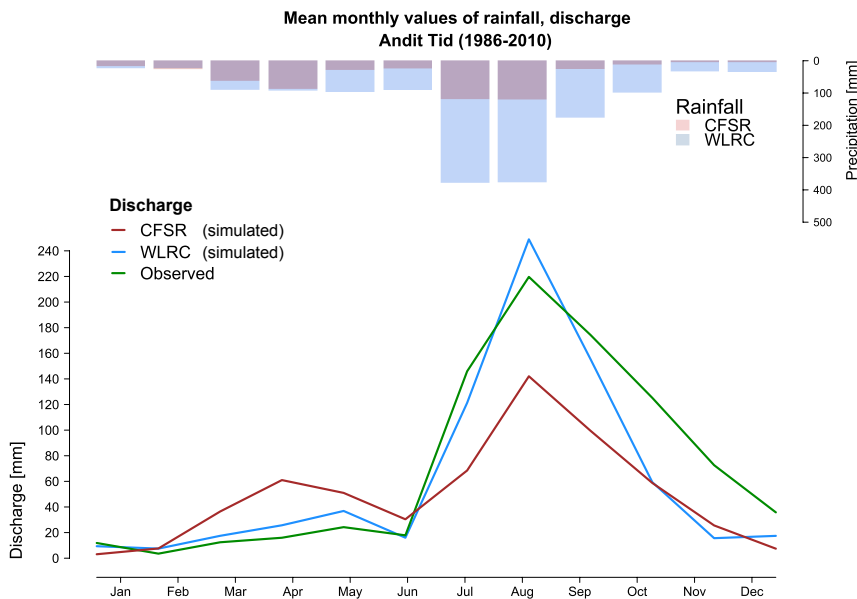


Fig. 2. Mean monthly rainfall and discharge Andit Tid (Fig 5)

C940

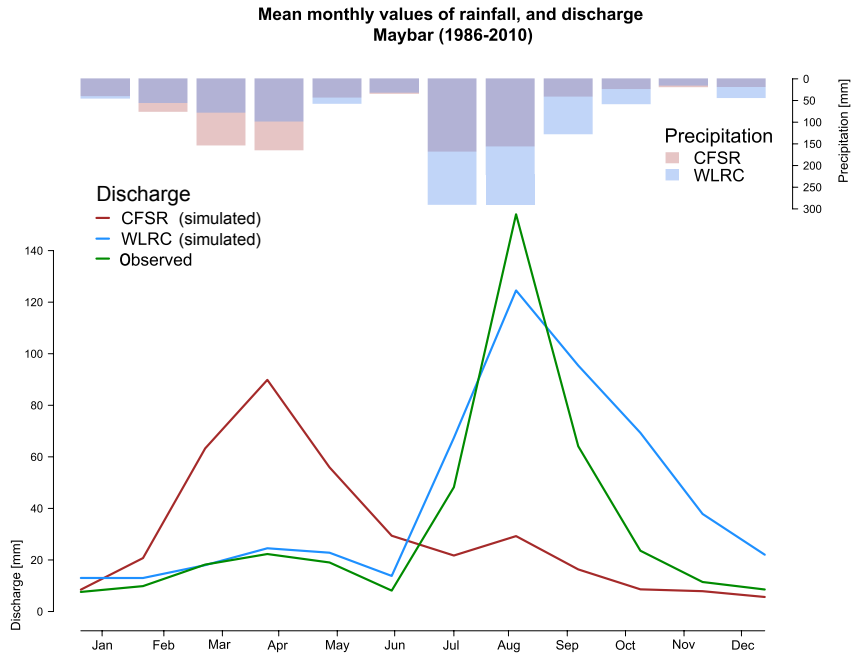


Fig. 3. Mean monthly rainfall and discharge Maybar (Fig 6)

C941

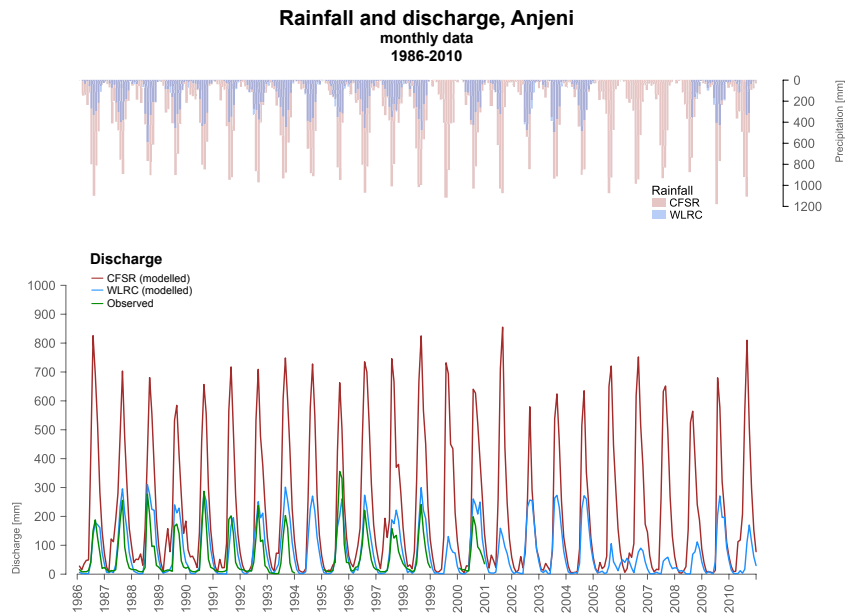


Fig. 4. Monthly rainfall and discharge all stations (new figure)

C942