

Interactive comment on “Groundwater flow processes and mixing in active volcanic systems: the case of Guadalajara (Mexico)” by A. Hernández-Antonio et al.

A. Hernández-Antonio et al.

jurgen@itesm.mx

Received and published: 30 March 2015

Dear reviewer,

thank you very much for your interest and important comments. We have attended you comments correspondingly and attached them in a supplemental file for a better visualization of the sometimes longer answers.

Best wishes, Jürgen Mahlknecht

Please also note the supplement to this comment:

C735

<http://www.hydrol-earth-syst-sci-discuss.net/12/C735/2015/hessd-12-C735-2015-supplement.pdf>

Interactive comment on Hydrol. Earth Syst. Sci. Discuss., 12, 1599, 2015.

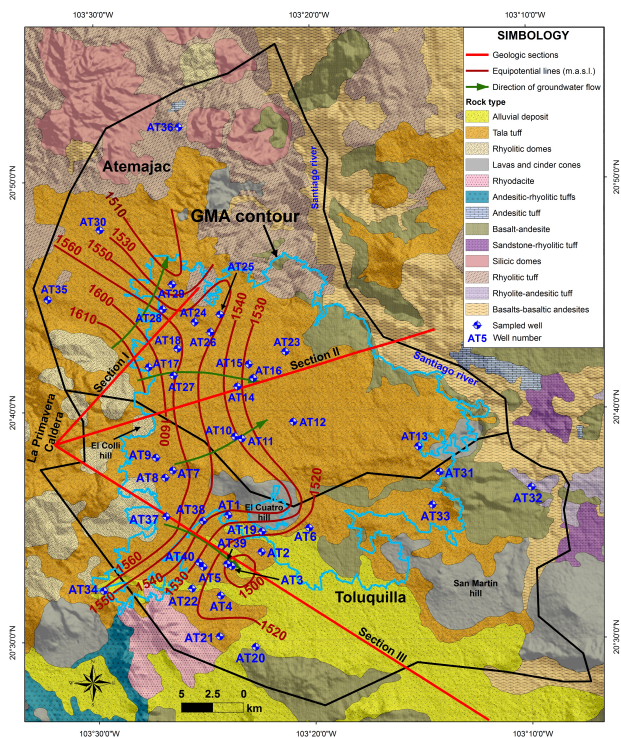


Fig. 1. Figure 2: Surface geology, water table distribution and location of wells sampled in the study area. Note: GMA = Guadalajara metropolitan area

C737

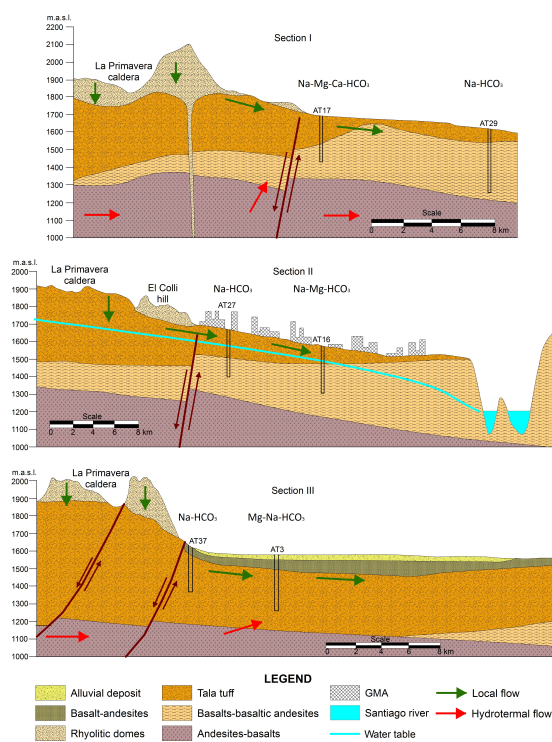


Fig. 2. Figure 3: Cross-sections indicated in Fig. 2 and considering hydrogeological settings and water types of selected wells.

C738