

Interactive comment on “Groundwater flow processes and mixing in active volcanic systems: the case of Guadalajara (Mexico)” by A. Hernández-Antonio et al.

A. Hernández-Antonio et al.

jurgen@itesm.mx

Received and published: 30 March 2015

Dear Dr. Custodio,

thank you for your interest and comments. We are sure that your contribution will improve essentially the overall quality of the manuscript. We attended all your comments in detail and attached them as supplemental file for a better visualization of the sometimes large answers.

Best regards, Jürgen Mahlknecht

Full Screen / Esc

Printer-friendly Version

Interactive Discussion

Discussion Paper

Please also note the supplement to this comment:

<http://www.hydrol-earth-syst-sci-discuss.net/12/C731/2015/hesd-12-C731-2015-supplement.pdf>

Interactive comment on Hydrol. Earth Syst. Sci. Discuss., 12, 1599, 2015.

HESD

12, C731–C734, 2015

Interactive
Comment

Full Screen / Esc

Printer-friendly Version

Interactive Discussion

Discussion Paper

C732



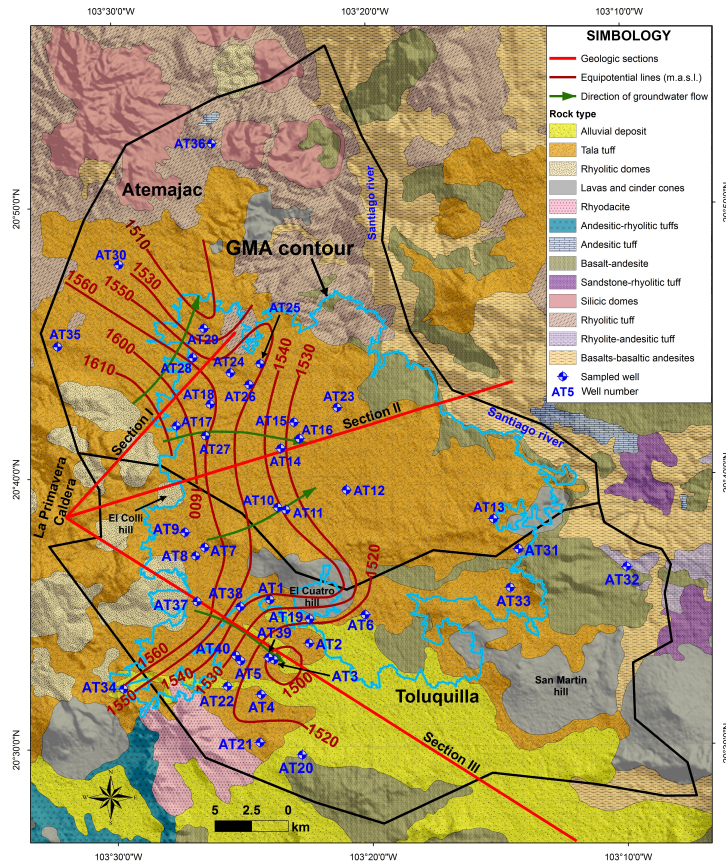


Fig. 1. Figure 2: Surface geology, water table distribution and location of wells sampled in the study area. Note: GMA = Guadalajara metropolitan area

Full Screen / Esc

Printer-friendly Version

Interactive Discussion

Discussion Paper



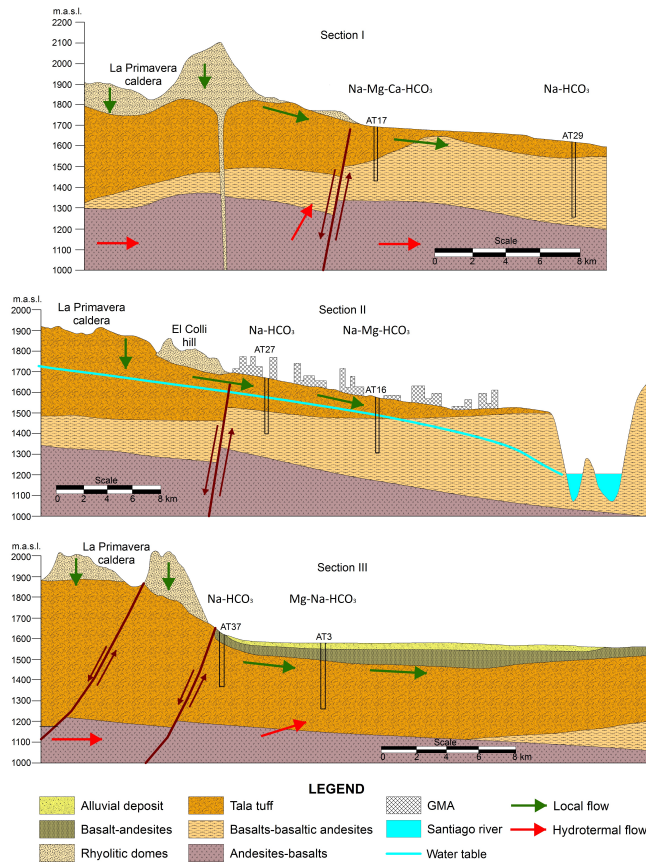


Fig. 2. Figure 3: Cross-sections indicated in Fig. 2 and considering hydrogeological settings and water types of selected wells.