

Interactive comment on “How effective is river restoration in re-establishing groundwater – surface water interactions? – A case study” by A.-M. Kurth et al.

M. Walther (Referee)

marc.walther@ufz.de

Received and published: 16 February 2015

Dear authors,

thank you for your detailed reply to my comments. I see many questions already answered. However, some issues remain open which I would like to address in the following.

There are many replies which contain valuable information and clarifications. I think, it would be good if you included the info in the manuscript. Therefore, I would like to see the revised manuscript to take a look at your improvements and changes; is it possible

Full Screen / Esc

Printer-friendly Version

Interactive Discussion

Discussion Paper



to upload the manuscript (I couldn't find it)?

Your reply to 19) Your explanation is correct, but I was not talking about the temperature change as a result of the heating, but the fact that - if all other conditions are the same - the initial temperature should not influence the temperature difference which results from the heating.

30) I attached a picture to show the shading I am talking about. The effect of this shade is a change in color in the figure, which is not given in the legend and might be misleading in an interpretation. In the figure, I added two arrows to show that different colors are supposed to be the same temperature range (though, the second, darker color that is affected by the shading, is not given in the legend).

In my initial comment ("each colored line on the x axis, from cable section 214 to 501 m, represents one measurement." - I cannot see any lines, what do you mean by that?) I did not mean the line diagram on the left, but wanted to ask what "lines" you are describing - I just do not see any lines in the right figures (are these lines horizontal or vertical, can you point out one of the lines specifically?).

Sincerely, Marc Walther

Interactive comment on Hydrol. Earth Syst. Sci. Discuss., 12, 1093, 2015.

Full Screen / Esc

Printer-friendly Version

Interactive Discussion

Discussion Paper



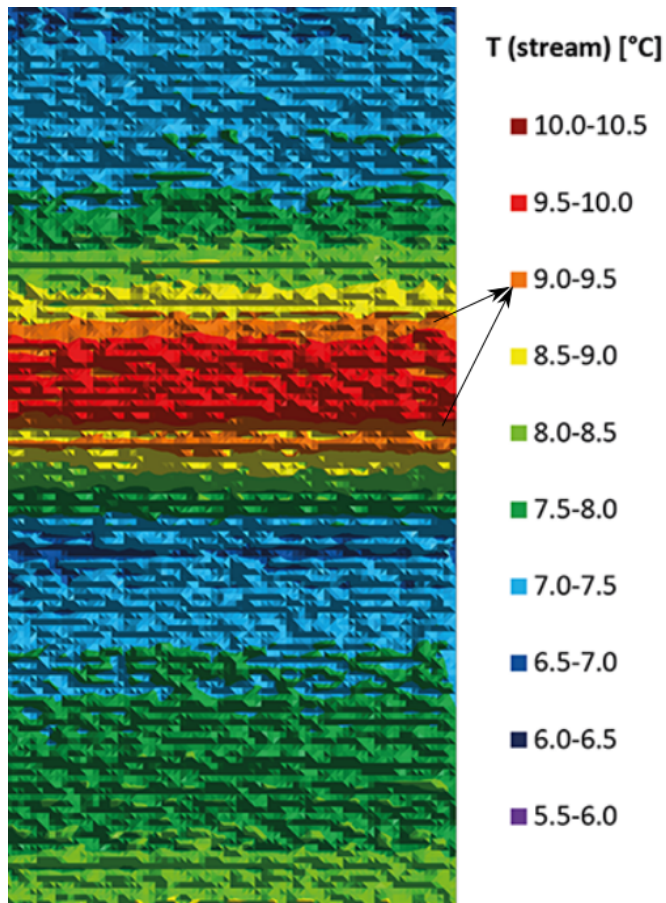


Fig. 1.

Full Screen / Esc

Printer-friendly Version

Interactive Discussion

Discussion Paper

