



**HESSD**

12, 4413–4469, 2015

**Quantitative  
historical hydrology  
in Europe**

G. Benito et al.

This discussion paper is/has been under review for the journal Hydrology and Earth System Sciences (HESS). Please refer to the corresponding final paper in HESS if available.

# Quantitative historical hydrology in Europe

**G. Benito<sup>1</sup>, R. Brázdil<sup>2,3</sup>, J. Herget<sup>4</sup>, and M. J. Machado<sup>1</sup>**

<sup>1</sup>Museo Nacional de Ciencias Naturales, CSIC, Serrano 115 bis, 28006 Madrid, Spain

<sup>2</sup>Institute of Geography, Masaryk University, Kotlářská 2, 611 37 Brno, Czech Republic

<sup>3</sup>Global Change Research Centre, Academy of Sciences of the Czech Republic, Bělídla 4a, 603 00 Brno, Czech Republic

<sup>4</sup>Dept. of Geography, University of Bonn, Meckenheimer Allee 166, 53115 Bonn, Germany

Received: 27 March 2015 – Accepted: 4 April 2015 – Published: 30 April 2015

Correspondence to: G. Benito (benito@mncn.csic.es)

Published by Copernicus Publications on behalf of the European Geosciences Union.

[Title Page](#)

[Abstract](#)

[Introduction](#)

[Conclusions](#)

[References](#)

[Tables](#)

[Figures](#)



[Back](#)

[Close](#)

[Full Screen / Esc](#)

[Printer-friendly Version](#)

[Interactive Discussion](#)



## Abstract

In the last decades, the quantification of flood hydrological characteristics (peak discharge, hydrograph shape, and runoff volume) from documentary evidence has gained scientific recognition as a method to lengthen flood records of rare and extreme events. This paper describes the methodological evolution of quantitative historical hydrology under the influence of developments in hydraulics and statistics. In the 19th century, discharge calculations based on flood marks were the only source of hydrological data for engineering design, but later were left aside in favour of systematic gauge records and conventional hydrological procedures. In the last two decades, there is growing scientific and public interest to understand long-term patterns of rare floods, maintain the flood heritage and memory of extremes, and to develop methods for deterministic and statistical application to different scientific and engineering problems. A compilation of 45 case studies across Europe with reconstructed discharges demonstrates that (1) in most cases present flood magnitudes are not unusual within the context of the last millennium, although recent floods may exceed past floods in some temperate European rivers (e.g. the Vltava and Po rivers), (2) frequency of extreme floods have decreased since the 1950s, although some rivers (e.g. the Gardon and Ouse rivers) show a reactivation of rare events over the last two decades. There is a great potential of gaining understanding of individual extreme events based on a combined multiproxy approach (palaeoflood and documentary records) providing high-resolution time flood series and their environmental and climatic changes; and to develop non-systematic and non-stationary statistical models based on relations of past floods with external and internal covariates under natural low-frequency climate variability.

## 1 Introduction

Historical hydrology is the study of the hydrological cycle before the continuous instrumental recordings on the basis of highly-resolved man-made documentary evidence

**HESSD**

12, 4413–4469, 2015

## Quantitative historical hydrology in Europe

G. Benito et al.

Title Page

Abstract

Introduction

Conclusions

References

Tables

Figures



Back

Close

Full Screen / Esc

Printer-friendly Version

Interactive Discussion



(Brázdil et al., 2006b, 2012). Most of the documented pre-instrumental records referred to hydrological extremes (floods and droughts) that produced major disruption on past societies. In this context, historical floods have been frequently reported through written, pictorial and epigraphic documentation across Europe (Brázdil et al., 2012; Herget, 2012). Historical hydrology is on the interface between hydrology and environmental history: based on data derived from documentary sources (non-instrumental human observations), its analysis involves the use not only historical-archival methods, but of hydrological modelling, and stochastic frequency analysis. Traditionally, the collection of historical flood information has been mainly addressed within the field of historical climatology together with other natural phenomena such as heavy rains, storms at sea, snowfalls and droughts (Brázdil et al., 2005b). Over the last 20 years, the study of historical floods has gained recognition in Europe as key to understanding the natural hazards dynamics and their response to climate variability. Some major efforts were done in the topic within the European projects SPHERE (Systematic, Palaeoflood and Historical data for improvEment of flood Risk Estimation; Benito et al., 2004) and the FLOODCHANGE Advance Grant (Deciphering River Flood Change; Kiss et al., 2015). The possibility of extending river records towards the past have opened new perspectives in the study of extreme hydrological events whose analysis in terms of return periods, variability and tendency to clustering requires long hydrological data sets (Hall et al., 2014). However, documentary flood data are, in most cases, descriptive information, limited to a location (at human settlements), depending upon human perception (caused damages) and eventually bias by the political, legislative and administrative (local, regional and national) contexts. Recent advances on hydrological and hydraulic modelling and statistical-mathematical methods allow better dealing with the uncertain and categorical data characteristic of historical floods developing new applications in the study of flood hazards and climate change studies.

In Europe, historical documentary flood sources go back to Roman times (Camuffo and Enzi, 1996) although continuous and homogeneous written archives are known to be available only for the past 500 years (Brázdil et al., 2005a; Glaser et al., 2010). Euro-

## HESSD

12, 4413–4469, 2015

### Quantitative historical hydrology in Europe

G. Benito et al.

[Title Page](#)

[Abstract](#)

[Introduction](#)

[Conclusions](#)

[References](#)

[Tables](#)

[Figures](#)



[Back](#)

[Close](#)

[Full Screen / Esc](#)

[Printer-friendly Version](#)

[Interactive Discussion](#)



pean richness on flood historical documents is only comparable to China with 100 000 reports from 8000 localities, although quantitative description of the flood hydrographs in Chinese rivers did not start till the 18th century (Luo, 1987). The oldest historic nearly continuous flood record is not to be found in Europe or Asia, but in Africa, in ancient Egypt (Popper, 1951) whose economic wealth depended on the flooding of the River Nile and the annual deposition of fertile sediments along the river flood plain. In the Nilometer of Egypt, flood levels were observed and measured since ca. 3000 BC. In the USA, historical floods include information about extreme hydrological events observed in staff gauges (water-level readings), and therefore data derived from non-recording, attendant-read, staff gauges are traditionally considered historical data (Cook, 1987). In Europe, the early stages of hydrology (1780–1860) involved human observations of water level readings on staff gauges, which were not always continuous throughout the year. This problem was gradually solved with the modernisation of gauge stations that made possible to record continuous flow stage on counters and data-loggers (Fig. 1). This early instrumental period, that started around the 18th century and comprehends the initial flood observations at staff gauges, has been considered part of the historical hydrology (Brázdil et al., 2012). Another source of long-term pre-instrumental floods data, though sometimes with a lower time resolution, are sedimentary and botanical records, known as palaeofloods (cf. Baker, 2008; Fig. 1). Palaeostage indicators include various types of geologic evidence (flood deposits and geomorphic features; Benito and Díez-Herrero, 2015) and woody debris, as well as morphologies related to direct physical damages on riverine vegetation (e.g. scars on trees and tilting; Herget, 2012; Benito and Díez-Herrero, 2015). A number of studies have combined both historical and geological indicators to ascertain the magnitude and frequency of past flood, increasing the robustness of the frequency analysis of rare floods (Benito et al., 2010).

This paper aims to describe the different techniques and approaches used in order to obtain quantitative information from historical flood data, as well as to draw attention to its different scientific and engineering applications. The specific targets are (1) to describe the historical flood data sources leading to robust estimations of long-term

## HESSD

12, 4413–4469, 2015

### Quantitative historical hydrology in Europe

G. Benito et al.

Title Page

Abstract

Introduction

Conclusions

References

Tables

Figures



Back

Close

Full Screen / Esc

Printer-friendly Version

Interactive Discussion



flood discharge records, (2) to review different techniques used for reconstructing the magnitude and frequency of specific past floods using documentary evidence, (3) to describe the approaches used in flood frequency analysis with historical discharges, and (4) to illustrate how historical quantitative hydrology can contribute in the solution of environmental and engineering problems.

## 2 Quantitative historical hydrology

The primary goal of historical hydrology is to collect information on past extreme floods such as date, relative magnitude, damages and socio-economic impacts at the time (Brázdil et al., 2006b, 2012; Glaser et al., 2010). Most recently, there has been a growing interest on quantifying these descriptive data in the reconstruction of flow depths, discharges and hydraulic properties associated to historical flooding (Fig. 1). This quantification may be numerical (peak flow) or categorical (damage classification). Regarding numerical data, the observed flood-water levels associated to a given historical flood can be transformed by hydraulic calculations into velocities and discharges in a procedure analogous to the depth-discharge relationships used to determine the flow rate in gauge stations (Cook, 1987; Benito et al., 2004; Herget et al., 2014). Flood magnitudes can also be classified in terms of resulting damages, or social impacts (e.g. Sturm et al., 2001). The use of secular records for the analysis of possible changes in the magnitude and frequency of individual floods at specific sites or for specific rivers can support not only flood hazard assessment analysis, but enable the identification of interconnections between flood frequency and severity and climate, land-use and river morphology (Macdonald and Black, 2010). Moreover, historical flood data often includes other less commonly used information and data regarding the societal and economic consequences of these natural disasters (Coeur, 2003). Yet, this valuable data on the role of floods, through time, on local and national societal and policy changes are still an unexplored field that can bring new insights on the public perception of risk.

## Quantitative historical hydrology in Europe

G. Benito et al.

[Title Page](#)

[Abstract](#)

[Introduction](#)

[Conclusions](#)

[References](#)

[Tables](#)

[Figures](#)

[⏪](#)

[⏩](#)

[◀](#)

[▶](#)

[Back](#)

[Close](#)

[Full Screen / Esc](#)

[Printer-friendly Version](#)

[Interactive Discussion](#)



The use of documentary flood data in hydrological studies usually comprises four phases of analysis: (1) compilation and assessment of flood dates and water levels, (2) classification of events according to flood water-level (exact stage), described inundation zones (minimum or maximum flood level) and from reported damages, (3) estimation of flood magnitude, usually peak discharge, associated with documented and site-observed evidence; and finally (4) use of historical flood data in the flood frequency analysis. The implementation of the first two initial analysis steps entails a previous command in historical archives research, both written and cartographical that will not only produce a record of historical floods, but will also identify flooded sites and morphological changes on river channel and floodplain in the course of historical analysed period. The third task requires the implementation of hydraulic and hydrodynamic analyses, mainly drawn from engineering applications, to assign a flow magnitude derived from documentary evidence. Finally, historical estimated discharge data can be merged with instrumental records in a flood frequency analysis in order to determine discharges associated to probability quantiles.

### 3 History of hydraulics and early flood estimations in Europe

The first hydraulic parameter described in rivers was the water-level reached during extraordinary events. Ancient Romans observed and recorded flood water levels at bridges (e.g. Albenga, 1940), and the Roman engineers used this knowledge for designing their infrastructures (Lorenz and Wolfram, 2011). The study of flood levels was important ensuring efficient and long lasting hydraulic structures, and leave this legacy to future generations as it can be read in the inscription placed at the 30 m high Alcantara Bridge (Spain): “*Pontem perpetui mansurum in saecula mundi*” (Bridge to last forever in the perpetuity of the world; Fernández-Casado, 2008). Nowadays, the preservation of written records about flood data from antiquity is anecdotal since most written records were destroyed. During Medieval times, water marks associated with large floods were made on bridges, houses and even on bedrock outcrops although in

## Quantitative historical hydrology in Europe

G. Benito et al.

Title Page

Abstract

Introduction

Conclusions

References

Tables

Figures



Back

Close

Full Screen / Esc

Printer-friendly Version

Interactive Discussion



# HESSD

12, 4413–4469, 2015

## Quantitative historical hydrology in Europe

G. Benito et al.

[Title Page](#)[Abstract](#)[Introduction](#)[Conclusions](#)[References](#)[Tables](#)[Figures](#)[⏪](#)[⏩](#)[◀](#)[▶](#)[Back](#)[Close](#)[Full Screen / Esc](#)[Printer-friendly Version](#)[Interactive Discussion](#)

a non-systematic way (Brázdil, 1998; Deutsch and Pörtge, 2009; Brázdil et al., 2012). Systematic water-level readings at gauges did not start before the later 18th century, namely in Germany, France, Austria and Czech Lands. A review about the history of these first gauge water-level readings in Europe was compiled and published by Brázdil et al. (2012), though at the national level several papers have been published recently regarding the development of discharge measurements (e.g. for northern Germany, Deutsch, 2010). The revolutionary step on flood hydrology records which enabled to register and calculate flow discharge after stage level at gauge stations did not take place till the 19th century with the measurement of flow velocity. The first rotor current meter was developed by Woltman (1790) and underwent several improvements during the 19th and 20th centuries (Lanser, 1953). Current-meter gauging stations permitted the measurement of the flow rating curve (depth-discharge relationship) at the first established gauge stations in European rivers (Fig. 2). Rating curves were established and rated most reliably for low-to-moderate flows. The extreme flow discharges were frequently obtained from extrapolation of the rating curve. As this approach is less reliable and implies numerous uncertainties due to missing calibration, discharges associated to high flood levels were estimated by hydraulic formulae. Hence, reconstructions of historical floods gained robustness simultaneously to the advance in hydraulic research.

The first equations accounting for resistance law in open channels were established during the late 18th and 19th century. In 1775 the French engineer Antonie Chézy (1718–1789) proposed the first resistance formula based on a study of the water transfer from the River Yvette to Paris by an earthen canal (Herschel, 1897). Chézy's formula can be derived mathematically from two assumptions, as described by Chow (1959). First, Chézy assumed that the force resisting the flow due to friction per unit area is proportional to the square of the velocity  $V^2$  multiplied by a constant of proportionality  $K$ , the length of the canal  $L$ , and the perimeter  $P$  of the section in contact with the water, i.e.  $KV^2LP$ . The second assumption in Chézy's formula is equality of the total force of resistance to the effective gravity-force component which is parallel to the channel

bottom, namely  $\omega ALS$ , where  $\omega$  is the unit weight of water,  $A$  is the cross-section area,  $L$  is the channel length and  $S$  the slope. Since  $\omega ALS = KV^2PL$ , where  $A/P$  is the hydraulic radius  $R$  and  $\sqrt{\omega/K}$  can be replaced by a factor  $C$ , then it is obtained Chézy's equation as:

$$V = C\sqrt{RS}$$

In this formula, the factor  $C$  is the main uncertainty for velocity calculations estimated for known river cross-sections by indirect methods or assumptions. For instance, the first discharge estimates of the 1857-flood in the Ardèche (France) were obtained from multiplying the calculated velocity by 0.7 to reflect the unequal distribution of flow rate and channel roughness (De Mardigny, 1860). During the 19th century different experiments were performed to determine the involved variables in Chézy's factor  $C$ , among which the most relevant were proposed by Ganguillet and Kutter (1869) and Bazin (1897). Henri Emile Bazin (1829–1917) conducted laboratory studies on channels made on cement, brick, wood and rock proposing a formula where  $C$  is a factor of  $R$ :

$$C = \frac{87}{1 + m/\sqrt{R}}$$

where  $m$  is a roughness coefficient that varies between 0.06 for canals made of concrete to 3.17 for earth channels with rough conditions (Bazin, 1897).

In 1868, Philippe Gascard Gauckler (1826–1905) engineer at *Ponts et Chaussées*, proposed two formulae for the estimation of the flow velocity  $V$  as:

$$V = \lambda_1 R^{4/3} S \text{ for } S > 0.0007$$

$$V = \lambda_2 R^{2/3} S^{1/2} \text{ for } S < 0.0007$$

where  $\lambda_1$  and  $\lambda_2$  are coefficients describing the boundary roughness. The second formula applies for laminar flow regime, that may also be expressed as  $\lambda_2 = 1/n$  being

## HESSD

12, 4413–4469, 2015

### Quantitative historical hydrology in Europe

G. Benito et al.

Title Page

Abstract

Introduction

Conclusions

References

Tables

Figures

◀

▶

◀

▶

Back

Close

Full Screen / Esc

Printer-friendly Version

Interactive Discussion





$n$  a roughness parameter, as it was proposed later by the Irish engineer Robert Manning (1816–1897), although apparently Manning was unaware of Gauckler’s work. The popular Manning equation (Manning, 1891) is expressed in metric units as

$$V = KR^{2/3}S^{1/2}$$

where  $K$  is a factor of flow resistance that later was modified to  $1/n$ , where  $n$  is known as Manning’s roughness coefficient. Later, Strickler (1923) proposed a new expression of the Chézy’s  $C$  coefficient  $C = KR^{1/6}$  that applied in the Chézy’s formula provides a similar expression of the Gauckler–Manning’s formula. There is still an open debate on the significance of the different contributions to the still recently frequently applied approach (Williams, 1970; Dooge, 1992; Hager, 2005). Consequently, this equation is also named Gauckler–Manning–Strickler formula. Another fundamental set of hydraulic equations for unsteady open channel flow was formulated by Barré de Saint-Venant in 1843 who published the correct derivation of the Navier–Stokes equations identifying the coefficient of viscosity and its role in the local acceleration and fluid turbulence (Anderson, 1997).

The Gauckler–Manning formula has been used extensively since early estimates of historical floods to calculate the mean flow velocity at sections with observed historical flood levels (Pardé, 1925b). During the first half of the 20th century the research on historical floods was developed with a great influence of physical geographers. Maurice Pardé (1893–1973), Professor of Potomology in Grenoble, was probably the most prolific European author in the study of extreme historical floods, with over three-hundred papers and two-thousand hand-written notes and letters on the subject including a vast compilation of documentary floods worldwide. In Austria, the first known publications calculating discharges using historic flood-marks were carried out by Schwarzl (1956) and Kresser (1950, 1957). The highest flood level marked on public buildings and passage near the river corresponds to the 1501-flood estimated as ca.  $14\,000\text{ m}^3\text{ s}^{-1}$  in Engelhartzell in Upper Austria (Kresser, 1957). In Italy, early discharge estimations from historical flood levels were carried out by engineers at the service of water au-

## HESSD

12, 4413–4469, 2015

### Quantitative historical hydrology in Europe

G. Benito et al.

Title Page

Abstract

Introduction

Conclusions

References

Tables

Figures



Back

Close

Full Screen / Esc

Printer-friendly Version

Interactive Discussion



thorities, and data were reported as internal publications (e.g. HOPR, 1935; Giovannelli and Allodi, 1960's, cited in Zanchettin et al., 2008). In the River Po, the 1857, 1868, and 1872 flood levels were studied in the context of large flooding recorded during the early decades of the 20th century (Visentini, 1936, 1938; Visentini and Pardé, 1936), concluding that historical flood peaks were of lower magnitude than contemporaneous extreme events.

These early 20th century advances on hydraulic models and stream flow measurements supported the re-estimations of discharge associated with certain large historical floods. For instance, in the River Isère the 1740-flood discharge originally estimated as  $1844 \text{ m}^3 \text{ s}^{-1}$  by the engineer Christophe Dausse in 1780 (Lang et al., 2003) was later revised in  $2000 \text{ m}^3 \text{ s}^{-1}$  by Pardé (1925b) using Chézy and Gauckler equations. Pardé (1961) provided the first worldwide inventory of flood discharges including a large number of pre-instrumental floods, many obtained from letters and unpublished reports with a reliability difficult to verify. The compilation of discharges from these early historical flood studies resulted in the plotting of regional envelope curves of maximum flood peaks or discharge per unit area vs. drainage area (Wundt, 1949; Pardé, 1961; Francou and Rodier, 1967). The envelope curve is a deterministic method to transpose space-for-time under the assumption that there is a limit of precipitation supplied to a basin under a given climatic and geographic domain (Myers, 1967).

The study of past floods declined since the mid-20th century as databases of stream flow measurements supported by statistical analysis provided standard hydrological methods for flood hazard applications on which historical extremes were considered anecdotal, imprecise and outliers in relation to systematic gauged records (Klemeš, 1989).

#### 4 Quantitative historical flood records: approaches and methodology

Most of the early historical flood discharge estimates were obtained from flood marks using hydraulic equations under the assumption of uniform flow conditions. However,

## HESSD

12, 4413–4469, 2015

### Quantitative historical hydrology in Europe

G. Benito et al.

Title Page

Abstract

Introduction

Conclusions

References

Tables

Figures

⏪

⏩

◀

▶

Back

Close

Full Screen / Esc

Printer-friendly Version

Interactive Discussion



there is a large amount of documentary evidence providing descriptive evidence of past inundation levels and flood damages (impacts) that offer a quantitative reference of the associated flood discharges after a critical analysis and interpretation (Benito et al., 2004). For the past 20 years, there has been a growing interest on reconstructing flood chronologies and their discharge estimates from documentary descriptions of flood water level (Benito et al., 2003a). The reconstruction of long historical flood records from documentary sources relies upon the availability of historic data for model implementation and calibration, uncertainty on the past river topography, and detailed configuration of the river channel and vegetation for roughness characterisation. Extracting quantitative hydrological data from documentary evidences leads typically to two phases of analysis: (1) documentation and assessment of documentary evidence of flood stage during specific historical floods and (2) relating of identified flood evidence to flood discharge, based on hydraulic calculations. Documentary evidence of flood water level includes flood marks, with indication of single or multiple flood levels (Fig. 3), and relative water levels obtained from narrative descriptions from places affected by flooding (e.g. a church, one of several streets, singular buildings). By the computation from water level to discharge, several correlative water surface evidences (marks, inundated sites) of a historical flood are matched to a water surface profile of a known discharge, obtained from hydraulic modelling. A major problem for this hydraulic analysis is the reconstruction of river channel geometry at the time of flooding, which produces a high uncertainty on the discharge calculations mainly in alluvial rivers (i.e. mobile river bed). The existence of historical maps showing the channel morphology at the flood time can be used to reconstruct its former morphology. The historical flood estimated discharges are then structured into different threshold levels that were exceeded by floodwaters over specific periods of time, the input data necessary for flood frequency analysis (Fig. 1b).

## HESSD

12, 4413–4469, 2015

### Quantitative historical hydrology in Europe

G. Benito et al.

Title Page

Abstract

Introduction

Conclusions

References

Tables

Figures

⏪

⏩

◀

▶

Back

Close

Full Screen / Esc

Printer-friendly Version

Interactive Discussion



## 4.1 Documentary data sources and types

Several review papers have described the main data sources of historical hydrology (Brázdil et al., 2006b, 2012). They are often grouped into three data categories: hand-written documents (e.g. narrative sources, administrative and ecclesiastic reports, and personal correspondence); printed sources (special prints newspapers, databases, reports and technical papers); iconographic sources (stone-marks, historical photography and paintings, old cartography and cross-sections).

Narrative descriptions about floods may be biased by perception, both from the writer and from the present day researcher (Brázdil et al., 2006b). Since information from documentary sources is mainly qualitative, several classifications have been suggested taking into account the severity of flood impacts (Sturm et al., 2001; Barriendos and Coeur, 2004). Barriendos and Coeur (2004) proposed a qualitative classification of flood severity for records prior to the pre-instrumental period, taking as reference the channel overflow: ordinary flood – when water remains within the channel and banks; extraordinary flood – resulting in localised overbank flow, with any damage but without major destruction; and catastrophic flood – with inundation resulting in general damage and destruction of infrastructures.

A study of historical hydrology involves: (1) collection of documentary sources (e.g. municipal, ecclesiastical and private archives) and consideration of already compiled information (e.g. books, databases and reports), (2) compilation of instrumental data for the area of investigation (rainfall, flow and level of the river, synoptic information), (3) collection of graphic information (e.g. paintings, photographs), (4) cross-reference of historical and palaeoflood (geological records) information, instrumental data and graphic information. It is convenient to produce a standardised data form to be filled for each documentary flood reference (Fernandez de Villalta et al., 2001; Casas et al., 2003; Barriendos and Coeur, 2004; Barriendos et al., 2014).

As mentioned above, early studies on historical floods were carried out mainly at sites with flood marks, for which peak flow values were calculated. However, most of

**HESSD**

12, 4413–4469, 2015

### Quantitative historical hydrology in Europe

G. Benito et al.

Title Page

Abstract

Introduction

Conclusions

References

Tables

Figures



Back


Close

Full Screen / Esc

Printer-friendly Version

Interactive Discussion



the documented historical flood information is not recorded as engraved flood marks (plates or inscriptions) but as descriptions of inundations that affected out-of-channel areas. This is the case for instance of the River Ter (NE Spain) for which a record of 170 floods was compiled for the period between 1322–1987 (Barriendos and Martin-Vide, 1998), from which only 77 floods were found to be registered in plates or wall inscriptions. The majority of the flood events mentioned in documentary sources  are nevertheless associated to a comprehensive description of the sites, or streets affected by the flood water-level. The reconstruction of flood discharges from descriptive flood levels beyond rough extrapolations and estimations (e.g. Schiller, 1987) was addressed firstly for the River Tagus in central Spain (Benito et al., 2003a). Discharges associated with documentary-based floods were reconstructed at four places, namely in Aranjuez (since AD 1557), Toledo (AD 1113), Talavera (AD 1203) and Alcántara (AD 1856). The hydraulic analysis and interpretation of the flood level from historical documents was inspired by methods commonly used in palaeoflood hydrology (Baker, 2008). Flood levels associated with documentary data at these locations include: (1) flood marks on houses, mills, monasteries and bridges, (2) descriptions of flooded areas as orchards, roads, streets, (3) descriptions of non-flooded areas (e.g. singular building surrounded by water but non-inundated), (4) relative flood level with respect to previous floods (e.g. the 1840 flood was 2 m higher than the flood occurring in 1820). The interpretation of these flood water level indicators provides four different discharge information records: (1) highest water level or peak discharge (equal to the flood stage), (2) minimum flood discharge, (3) maximum flood discharge, and (4) discharge quoted as a range in the case of two recorded levels. Field work is required to accurately locate (GPS survey) the sites referred in the historical documents (location of buildings, streets, bridges, gates, walls, etc.), as well as to ascertain the altitudes of the referred flood stages or levels. Thus, for all documentary evidences along the study reach, the flood height can be estimated and the associated flood discharge reconstructed (Fig. 4). Similar studies have been conducted later in other European sites (Table 1) with well documented floods and a rich historical archive. New methodological approaches were also devel-

## HESSD

12, 4413–4469, 2015

### Quantitative historical hydrology in Europe

G. Benito et al.

Title Page

Abstract

Introduction

Conclusions

References

Tables

Figures



Back

Close

Full Screen / Esc

Printer-friendly Version

Interactive Discussion



oped as in the case of the study conducted by Roggenkamp and Herget (2014) for the River Ahr at Ahrweiler (Germany). The hydrograph of the 1910-flood was reconstructed based on sequenced historic photographs showing the same inundated street with a street clock hanging on a wall of a building, which precisely linked time and flood water level.

## 4.2 Discharge estimation from documentary records

The most critical component of applied historical flood hydrology is the estimation of discharge associated to documented floods. The flow estimates from hydraulic analysis is usually based on the elevation of flooded or non-flooded sites and epigraphic marks relative to local channel geometry. The approaches used to assess discharge estimation from known flood-water levels vary from simple hydraulic formula to the results derived from the running of one or multi-dimensional hydraulic models (Kutija, 2003; Lang et al., 2004). Most historical flood studies assume a one-dimensional flow with calculations based on (1) uniform flow equations (e.g. Gauckler–Manning equation), (2) gradually varied flow models (e.g. standard step method calculation), and (3) one dimensional Saint-Venant equations. In complex reaches, multi-dimensional modelling may reduce uncertainties associated with reconstructing flood discharge (Denlinger et al., 2002).

The Gauckler–Manning equation is applied for uniform, steady and one-dimensional flow conditions of straight channels of even gradient and regular width (Chow, 1959). In most hydraulic computations, the result of the calculated discharge depends on the uncertainty in the selection of the roughness parameter, changes on cross-section topography and urban configuration on the floodplains since historic times. The typical method for estimating Manning's  $n$  is obtained from reference tables, from examination of photographs of typical channels whose roughness coefficients are known, or based on the experience of the researcher in similar river settings. Herget et al. (2014) proposed a method based on the Manning equation in which discharge is calculated separately for individual homogeneous units of the inundated cross-section area. At

[Title Page](#)

[Abstract](#)

[Introduction](#)

[Conclusions](#)

[References](#)

[Tables](#)

[Figures](#)



[Back](#)


[Close](#)

[Full Screen / Esc](#)

[Printer-friendly Version](#)

[Interactive Discussion](#)



each sub-section, the intervenient parameters of the Manning equation ( $R$ ,  $S$ ,  $n$ ) are assessed  some of the historical flooding based on old maps and written descriptions. The uncertainty on the estimation of roughness and of hydraulic geometry is introduced as different scenarios based on varying assumptions considered. Herget and Meurs (2010) applied this method to the 1374 flood of the River Rhine in Cologne, the highest in the local record. The calculated discharge was validated by application of this equation on recent floods and comparison of results with nearby cross-sections. Since flow in natural channels is typically not uniform, large errors can be expected when the Gauckler–Manning equation is applied to a single flood mark and one cross-section. The separation of the cross-section area into more or less homogenous units reduces this problem significantly. This approach cannot be used for floods caused by ice-jam or those with temporal bridge obstruction by woody debris raising the flow level instead of an increased discharge (Herget et al., 2014).

The most common historical flood discharge calculations are applied to gradually-varied flow conditions (Benito et al., 2003a; Lang et al., 2004; Naulet et al., 2005). River channel geometry is generally irregular in shape and surface roughness resulting in non-uniform flow conditions. Gradually-varied flow analyses usually assume a steady state (constant discharge) for which flow depth varies with distance but not with time (Chow, 1959). The typical approach relating historical flood evidence to discharge uses the step-backwater method for gradually-varied water-surface profile computation (Benito et al., 2003a). In this method, water-surface profiles are calculated from the resolution of the conservation of mass and energy equations in their one-dimensional forms. Available public-domain computer routines, such as the US Army Corps of Engineers HEC-RAS Hydrologic Engineering Center (2010), provides computation of water-surface profiles for specified discharges, and energy loss coefficients. Multiple analyses give synthetic rating curves at sites of interest, thus providing a basis for calculating historical flood discharge from the elevation of a water mark, known inundated locations or other high-water evidence (Thorndycraft et al., 2006). Uncertainties in flow modelling variables can be assessed for their resulting influence in historical

---

## Quantitative historical hydrology in Europe

G. Benito et al.

---

[Title Page](#)[Abstract](#)[Introduction](#)[Conclusions](#)[References](#)[Tables](#)[Figures](#)[⏪](#)[⏩](#)[◀](#)[▶](#)[Back](#)[Close](#)[Full Screen / Esc](#)[Printer-friendly Version](#)[Interactive Discussion](#)



flood discharges by testing outcomes of plausible ranges of Manning's  $n$  values and possible changes in channel geometry. Challenging for this approach is the demand for several quantified cross-sections along a valley which are usually hard to determine from historic descriptions. Consequently, the variation of the geometry and roughness parameters along a valley can only be assumed.

Recent advances in two-dimensional computing flow hydraulics (Kutija, 2003) have been considered for historical flood studies (Fernandez Bono and Grau-Gimeno, 2003; Calenda et al., 2005). In alluvial rivers, flow over the banks show a three dimensional behaviour and this should be analysed by two-/three-dimensional models. However, already even 2-D-modelling requires a large amount of high resolution channel and floodplain topographic information to define the working mesh as well as detail data about changes in historical topography after construction of buildings and roads, as well as spatial variability of roughness.

Flood hydrographs are essential for different engineering applications including dam operation and safety (Swain et al., 2006). The few essays to obtain hydrographs from palaeoflood studies have used probabilistic hydrographs (England et al., 2003; Benito et al., 2011). Recently, Elleder (2010) reconstructed the February 1784 flood of the River Vltava in Prague based on peak flood marks, daily newspapers and explanatory notes accompanying early instrumental measurements on the Klementinum observatory. The hydrograph showed only 45 h time to peak in Prague with a 4 m water level rise during a 12 h, a steep rise exceeded only by the August 2002 flood (Brázdil et al., 2005a, 2006a) (Fig. 5).

### 4.3 Assumptions and uncertainty evaluation of the estimated historical discharges

The reconstruction of historical flood records is subject to assumptions, limitations and uncertainties that may affect the interpretation of the number of floods and estimated discharge. A key element in this quantitative analysis is the transformation of known information of flow level to accurate discharge estimates. In this task, it is of critical

Title Page

Abstract

Introduction

Conclusions

References

Tables

Figures



Back

Close

Full Screen / Esc

Printer-friendly Version

Interactive Discussion





importance to confirm that the identified flood marks and sites used as flood level indicators are not removed since the time of flood event. Previous experience shows that (1) epigraphic marks could be easily removed from the original site during restoration works (Fig. 6), (2) some original land mark (street, wall, or floor) could be buried or their names changed the location (Deutsch et al., 2006; Munzar et al., 2006; Macdonald, 2007). Non-typical examples of flood marks are signs of flood levels recorded on the River Vltava in Prague with respect to the head of “bearded man” (in Czech *Bradáč*) (Elleder, 2003; Brázdil et al., 2005a) or for the River Elbe at Děčín on the Czech-German border located on the castle rock (Brázdil et al., 2005a; Kotyza, 2006).

A second set of uncertainties is related to the hydraulic setting and transformation of water level into discharge. The hydraulic calculations assume a precise characterisation of the channel geometry which remains invariant during the flood event and, in most cases, steady flow in subcritical flow conditions. In a given cross-section, the portions of effective flow (flow in the downstream direction) should be distinguished from regions of the channel that do not convey discharge downstream (e.g. eddy flows). Ideally, the model should be calibrated using known water surface elevation and discharges from contemporary floods, and if necessary carry out changes according to the historical vegetation and past urban configuration. Although the discharge estimation can be made on the basis of a single historical mark or flood evidence, confidence in the discharge determination is enhanced when calculated water surface profiles are matched by several flood marks or other inundation references along the study reach (Machado et al., 2015).

The effect of bridges, channel constrictions and obstacles in general, if they get blocked by ice jams or woody debris during the flooding, constitute another issue to be considered during the hydraulic modelling implementation (Fig. 5a). This blocking is likely to produce a back-flooding effect raising the flood level upstream. River lining and encroachment of the river bank may vary the floodway area and change the hydraulic conditions through time of referred flood marks. For instance, the Danube inundated ca 1000 km<sup>2</sup> of floodplains during the September 1899 flood whereas flood storage during

## HESSD

12, 4413–4469, 2015

### Quantitative historical hydrology in Europe

G. Benito et al.

Title Page

Abstract

Introduction

Conclusions

References

Tables

Figures



Back

Close

Full Screen / Esc

Printer-friendly Version

Interactive Discussion



the June 2013 flood was only a few hundreds of km<sup>2</sup> producing significant effects on the flood peak discharges (Blöschl et al., 2013). Note that the largest pan-European flood event of March 1784 was also caused by sudden release of water from local ice jams (Brázdil et al., 2010) (Fig. 5).

Assumptions concerning the hydraulic method and models applied to calculate discharge, type of flow (uniform vs. non-uniform), the effective flow area and choice of energy-loss coefficients cause uncertainty in discharge estimates. For instance, in the River Elbe in Dresden, the official peak discharge of the 1845 flood is 5700 m<sup>3</sup> s<sup>-1</sup> whereas the water profile calculations by means of one- and two-dimensional hydraulic models provides a value of 4335 m<sup>3</sup> s<sup>-1</sup>, a discrepancy attributed to an inaccurate stage-discharge relationships at the gauge (Pohl, 2008).

#### 4.4 Flood frequency analysis

A fundamental problem in hydrology is the analysis of the flood frequency or discharge corresponding to an occurrence interval (return period). This estimation is necessary to the correct design and location of structures (dams, bridges, industrial buildings) and in the flood hazard mapping. The statistical analysis of extreme values has been highly improved since earlier work by Foster (1924), describing the application of frequency curves to engineering problems. Fisher and Tippett (1928) developed frequency distributions of maximum values, subsequently applied by Gumbel (1945) to floods. The flood-frequency analysis (FFA) was presented as a replicable method for quantification of uncertainty based on a large number of flood data. There are several important problems in applied flood statistics to the study of large floods. The first concern is the complexity of natural phenomena and the second is the assumption that data collected on river gauges are representative of the largest and rarest floods (Baker, 1994). The design engineer Vance A. Myers (1967) highlighted the consequences of using FFA methods with short flow measurements for dam design: “In reading the early reports one can sense a confidence by the less cautious that the flood record was stable, that

Title Page

Abstract

Introduction

Conclusions

References

Tables

Figures



Back

Close

Full Screen / Esc

Printer-friendly Version

Interactive Discussion



nature had shown what she could do on a particular stream in a relatively few decades. This confidence was later found to be misplaced. The more cautious showed a feeling that major floods were among the imponderables, whose evaluation was impossible by the techniques then available. Some earth dams built during this period have failed due to insufficient spillway capacity". The design of sensible infrastructures was highly improved when historical flood data was considered. For instance, the spillway capacity of the Saucelle ( $13\,282\text{ m}^3\text{ s}^{-1}$ ) and Aldeadávila ( $12\,500\text{ m}^3\text{ s}^{-1}$ ) dams in the River Duero (Spain) were designed on the basis of a deterministic application of reconstructed historical discharges from the 1597, 1739 and 1909 flood marks (Rodríguez-Marquina, 1949a, b).

The use of historical floods for FFA has been more frequent since pioneer publications by Benson (1950) and Leese (1973) incorporating non-systematic (historical) data together with gauge records. Documentary data are particularly valuable where there is an account of all floods exceeding a certain stage (threshold), or censored level, over a long period prior the instrumental gauging (Fig. 1). Generally, this minimum flood level required to assure documentary evidence of flooding is related with a perception threshold to which the contemporary society was susceptible in terms of damage or social disruption (Stedinger and Cohn, 1986; Francés et al., 1994). This perception threshold is frequently related to a flood water-level within urban sensible zones (e.g. market, bridge, church) (Barriendos et al., 2003). The most common approach assumes that each flood exceeding this threshold has been recorded in the documentary record (Fig. 1a and b). For instance, flooding of the Aranjuez Royal gardens (Spain) is produced when the River Tagus overtopped the river banks during discharges exceeding  $300\text{ m}^3\text{ s}^{-1}$  (Benito et al., 2003a). A list of  $k_i$  observations above an arbitrary specified discharge threshold  $X_i$  in  $n_i$  years is similar to the analysis of partial duration series (data censored above threshold; Stedinger and Cohn, 1986; Francés et al., 1994; Francés, 2001). Statistically it is important to confirm that years with lack of historical flood record corresponded really to flows smaller than the discharge threshold  $X_i$ . The threshold level of flood perception may vary through time with regards to vari-

## HESSD

12, 4413–4469, 2015

### Quantitative historical hydrology in Europe

G. Benito et al.

Title Page

Abstract

Introduction

Conclusions

References

Tables

Figures



Back

Close

Full Screen / Esc

Printer-friendly Version

Interactive Discussion



ous human activities and occupation of riverside areas. Naulet et al. (2001) classified the documentary flood data on four types (Fig. 1b): (1) exact type when flood discharge is known (e.g. water mark), (2) lower bound type if we know that the flood level was higher than a lower bound ( $X_i$ ), which is known, (3) upper bound type if it is only known that the flood at time  $t$  was smaller than  $X_u$ , which is the upper bound; and (4) double bound type if it is known that flood discharge was bracketed by a double bound where  $X_i$  and  $X_u$  are known. These historical flood data (known as non-systematic) can be combined with systematic annual data from the gauge stations. FFA commonly uses parametric models (defined finite number of parameters) combining a cumulative probability distribution function and a parameter estimation method (Stedinger and Cohn, 1986). Most of the distribution functions (Gumbel, Log-Person, GEV) that are used in conventional FFA has been applied with historical data (Stedinger et al., 1993). Several methods have been used in the estimation of the statistical parameters for the selected distribution functions (Strupczewski et al., 2014). The most efficient methods to incorporate imprecise and categorical data are: (1) maximum likelihood estimators (Leese, 1973; Stedinger and Cohn, 1986; Francés, 2001), (2) the method of expected moments (Cohn et al., 1997; England et al., 2003); and (3) Bayesian methods (Kuczera, 1999; O'Connell et al., 2002; O'Connell, 2005; Reis and Stedinger, 2005). Several reviews of these methods have been published by Stedinger et al. (1993) and Francés (2004), and case study applications in Europe can be found, among others in Calenda et al. (2009), and Botero and Francés (2010).

A recent review by Kjeldsen et al. (2014) observed a scarce use of historical data for frequency estimates in 16 countries of Europe, identifying three main reasons: (1) the lack of unified database depositories, (2) uncertainty associated with discharge estimates, (3) concerns about violation of stationary assumption when using historical data, i.e. annual probabilities are equated to historical frequencies of occurrence. Concerning the second item, Viglione et al. (2013) indicated that the number of floods exceeding the perception threshold is more important than the uncertainty on discharge value. A reduction on the error is obtained for a return period of the largest

## HESSD

12, 4413–4469, 2015

### Quantitative historical hydrology in Europe

G. Benito et al.

Title Page

Abstract

Introduction

Conclusions

References

Tables

Figures



Back


Close

Full Screen / Esc

Printer-friendly Version

Interactive Discussion



historical flood about twice length of the pre-instrumental record (Strupczewski et al., 2014). Many documentary-based flood studies shown that flood frequency has been influenced by the internal variability of atmospheric circulation, with flood clusters at some time periods (Glaser et al., 2010), or by impacts on the environmental patterns such as land-use (Benito et al., 2010) and engineering works (Machado et al., 2015). A simple test of stationarity for censored samples (systematic and/or non-systematic) was proposed by Lang et al. (1999) assuming that the flood series can be described by a homogenous Poisson process (Naulet et al., 2005). It is recommended to select a sample above a high discharge threshold in order to produce an exhaustive and homogeneous set, avoiding bias in relation with archive availability or flood risk exposure (Barriendos et al., 2003). 

## 5 Discussion and perspectives

### 5.1 Discharge of historical floods in the context of instrumental records

Quantitative historical hydrology provides a multi-centennial perspective of extreme flood magnitudes. In Europe, there is a long tradition in the study of historical floods in the context of historical climatology (Brázdil et al., 2005b; Glaser et al., 2010) although reconstruction of peak discharges associated to documentary data is still scarce (Fig. 7). Table 1 shows a compilation of 45 case studies with historical discharge estimates at sites with multiple floods with discharge estimates published in peer review papers or being cross-checked with the original historical sources. Numerous studies suggest that current flood magnitudes are not unusual within the context of last 1000 years, with good examples for the rivers Rhine (Herget and Meurs, 2010; Wetter et al., 2011), Tiber (Calenda et al., 2005), Llobregat (Thorndycraft et al., 2005), Trent (Macdonald, 2013) and Gardon (Sheffer et al., 2008; Neppel et al., 2010). In general, the largest historical floods from the last 500 years show higher peak flows than the largest gauged floods (Fig. 7). The largest difference in discharge between his-

**HESSD**

12, 4413–4469, 2015

## Quantitative historical hydrology in Europe

G. Benito et al.

Title Page

Abstract

Introduction

Conclusions

References

Tables

Figures



Back

Close

Full Screen / Esc

Printer-friendly Version

Interactive Discussion



---

**Quantitative  
historical hydrology  
in Europe**

G. Benito et al.

[Title Page](#)[Abstract](#)[Introduction](#)[Conclusions](#)[References](#)[Tables](#)[Figures](#)[◀](#)[▶](#)[◀](#)[▶](#)[Back](#)[Close](#)[Full Screen / Esc](#)[Printer-friendly Version](#)[Interactive Discussion](#)

torical and gauged flood is mainly characteristic for small catchments and in Mediterranean rivers (e.g. Llobregat, Ter, Ticino, Tiber and Isère rivers). In these regions, the knowledge of historical peak flows may provide important insight in flood hazard prevention. For example, the 2002 flood of River Gardon (France), that claimed the lives

5 of 23 people and cause EUR 1.2 billion worth of damage, was larger than any gauged flood since 1890 (DDE, 2003). However, a documentary and palaeoflood-based study demonstrated that at least five floods larger than the 2002-flood occurred in AD 1400–1800, i.e. during the Little Ice Age (Sheffer et al., 2008).

In some cases, recent flooding in central and northern Europe reached similar magnitude or even higher than those reconstructed from documentary records, such as the River Vltava in Prague (Brázdil et al., 2005a; Elleder et al., 2013), and the records in the lower River Po (HOPR, 1935; Zanchettin et al., 2008) (Fig. 7). In the case of the River Findhorn in UK, the official gauged discharge for the 1970-flood was ca. 60 % higher than the reconstructed peak flow for the 1829-flood, although the former plots above

10 the envelope curve for Scottish runoff, raising doubt about their credibility (Werritty and McEwen, 2003).

## 5.2 Multi-proxy analysis of past hydrological extremes

Documentary archival data on floods in general are ubiquitous across Europe although the computation of peak discharges depends on the availability of reliable

20 epigraphic flood marks or thoroughly documented water level descriptions. In most cases, these flood marks are located in urban settings with frequent changes of the river channel topography that increase uncertainty of the values obtained when computing flood discharge. The combination of historical and palaeoflood (sedimentary) flood data has been demonstrated to be a very effective tool for improving the catalogue of past flooding and reducing uncertainties on flood discharges (Thorndycraft

25 et al., 2005). Palaeostage indicators from sedimentary records are frequently preserved within bedrock-stable cross-sections which are suitable settings for hydraulic estimation of flood discharges (Benito and O'Connor, 2013). Moreover, the age uncer-

tainty of numerical dating (radiocarbon respectively optically stimulated luminescence methods) used in palaeoflood studies may be refined based on known documentary floods (Medialdea et al., 2014). The SPHERE Project has revealed the complementary of palaeoflood and historical flood information (Benito and Thorndycraft, 2004) with major gain on the quality of past flood records in terms of time and discharge, as it is demonstrated in the studies performed for the rivers Gardon (Naulet et al., 2005; Sheffer et al., 2008), Ardèche (Sheffer et al., 2003; Naulet et al., 2005), Llobregat (Thorndycraft et al., 2005), and Guadalentin (Benito et al., 2010; Medialdea et al., 2014). New emerging palaeoflood archives from lake records show a great potential for synergy with documentary floods to complete regional records of extreme events to understand flood–climate relationships (Wilhelm et al., 2012; Corella et al., 2014). For instance, in Montcortés Lake (NE Spain) a varved sediment core accumulating since the 14th century contains detrital layers associated to intense rainfalls ( $> 80 \text{ mm day}^{-1}$ ) recording higher storm frequency during AD 1347–1400 and AD 1894, both periods coincide with severe floods from the nearby River Segre (Corella et al., 2014).

### 5.3 Flood magnitude sensitivity to climate change

Climate variability may affect both flood frequency and magnitude with greater sensitivity on largest “rare” floods (50 year flood and higher) than on smaller frequent floods (2 year floods; Knox, 1993, 2000). The study of historical floods in the context of climate variability has been focussed on high-quality complete datasets classified according to severity of damage (Sturm et al., 2001) to infer changes in flood frequency, meteorological causes and seasonality (Glaser et al., 2010). The classification of historical floods according to peak discharge or discharges over some threshold allows further analysis on the sensitivity of flood frequency in relation to their magnitude. Furthermore, this classification based on discharge classes allows consideration of the most recent instrumental records in an integrated analysis avoiding the bias of classifications based only on flood damages which varied over time with regards to exposition and vulnerability. Based on literature sources (cf. for details below), eight records compiled from

Title Page

Abstract

Introduction

Conclusions

References

Tables

Figures



Back

Close

Full Screen / Esc

Printer-friendly Version

Interactive Discussion





different European rivers where numerical or categorical flood magnitude during the historical period was completed with comparable data from gauged records (Fig. 8). Two flood categories were differentiated: (1) catastrophic floods (CAT) associated with high flood discharge or severe damages, and (2) extraordinary floods (EXT) causing inundation of the floodplain with moderate-to-minor damages.

In Central Spain, increased flood frequency of large floods was identified in AD 1000–1200, 1525–1625 and in the late 19th–early 20th centuries (Benito et al., 2003a; Fig. 8a). During the second half of the 20th century, the frequency of floods decreased, in connection with a dominant positive mode of the North Atlantic Oscillation during winter months; however, flow regulation by dams also played an important role in this flood frequency decline since the mid-1950s. In the River Segura (SE Spain) the frequency of catastrophic (autumn) floods decreased since the late 19th century together with the frequency of intense rainfall events except some decades (e.g. the 1970s and 1980s), in which intense rainfall and flooding co-existed with severe drought conditions (Fig. 8b; Machado et al., 2011).

In the River Gardon (southern France), the frequency pattern of large floods (> 50 yr floods) has decreased since the late 19th century, whereas the extraordinary and ordinary floods increased during the 20th century (Fig. 8c) (Sheffer et al., 2008; Neppel et al., 2010). In the River Tiber (Central Italy) extreme floods were particularly frequent in 1400–1500 and 1600–1700 (Camuffo et al., 2003). Large-catastrophic floods exceeding the 17 m stage ( $< 2900 \text{ m}^3 \text{ s}^{-1}$ ) at the Ripetta Landing ( $16\,545 \text{ km}^2$ ) were not constant in time: four floods above 18 m ( $< 3400 \text{ m}^3 \text{ s}^{-1}$ ) took place in only 80 years during the period 1530–1606 (Calenda et al., 2005), intriguingly a period of reported low flood frequency by Camuffo and Enzi (1996). Recent flooding is difficult to evaluate in the context of climate change due to river regulation structures, although only three extreme floods ( $> 2550 \text{ m}^3 \text{ s}^{-1}$ ) were recorded since 1900 (Fig. 8d). Extraordinary flood events exceeding  $1400 \text{ m}^3 \text{ s}^{-1}$  prior to 1970 occurred with a mean frequency of seven floods per decade, whereas after 1970 the frequency decreased to about five floods. Frequent events within the historical context (2 year flood), such as the December 2008

Title Page

Abstract

Introduction

Conclusions

References

Tables

Figures



Back

Close

Full Screen / Esc

Printer-friendly Version

Interactive Discussion





flood ( $12.55\text{ m}$ , ca.  $1400\text{ m}^3\text{ s}^{-1}$ ), are currently producing large economic impacts that demonstrates the increased flood vulnerability of the Rome region despite of decreasing flood hazard by flow regulation (Natale and Savi, 2007).

Several types of meteorological events and different storm types result in mixed flood distributions, each characterized by individual probability distribution parameters (Hirschboeck et al., 2000). Climatic variability can lead to flood magnitude/frequency changes affecting one or various types of flood populations (e.g. early spring snow-melt, convective storms) with relevant implications in the non-stationarity of the statistical parameters supporting flood probability analysis (Milly et al., 2008). Documentary records provide information on prevailing circulation types producing floods based on changes in flood seasonality. Macdonald (2012) studying the River Ouse, a large catchment within a UK perspective, has identified a higher frequency of summer floods within AD 1700–1849 than in the AD 1850–1999 period. Furthermore, the combined documentary and instrumental flood record (Macdonald and Black, 2010) illustrates that the frequency of extraordinary floods within the range of  $350$  to  $500\text{ m}^3\text{ s}^{-1}$  have increased during the 20th century, in particular comparatively to the most extreme floods ( $> 500\text{ m}^3\text{ s}^{-1}$ ; Fig. 8e). In Central Europe, long records of the Elbe and the Oder/Odra rivers showed a decrease in winter floods during the last 80 to 150 years (Fig. 8g and h), while summer floods showed no significant trend (Mudelsee et al., 2003). This change in seasonal flood patterns is reflected in the recent trend towards an overall decrease on flood magnitude, although in the case of the River Vltava (Czech Republic) the August 2002 flood reached the highest peak flow on record (Fig. 8f; Brázdil et al., 2005a). In the River Rhine at Basel (Switzerland) severe summer (JJA) floods were particularly frequent between 1651 and 1750, in relation to enhanced precipitation; severe winter (DJF) floods have not occurred since the late 19th century, despite a significant increase in winter precipitation (Wetter et al., 2011).

In some regions, the potential for ice jams on rivers should be consider in the analysis and interpretation of winter peak flows along centennial records. An ice jam can generate water-levels above rainfall floods due to inundation of the area behind the ice block-

**Quantitative  
historical hydrology  
in Europe**

G. Benito et al.

Title Page

Abstract

Introduction

Conclusions

References

Tables

Figures



Back

Close

Full Screen / Esc

Printer-friendly Version

Interactive Discussion



age, or as a consequence of rapid release of water after the ice jam failure (Beltaos, 2008). During the AD 1550–1850 period, ice cover on large mainland European rivers combined with late winter and spring snowmelt generated very large floods, similar to what is observed today at higher latitudes. In the Netherlands many floods over the 1750–1860 period were associated with ice jams, particularly on the River Waal (e.g., in 1781, 1784, 1799, 1805 and 1809; Driessen, 1994). Detailed records describing the winter ice jam floods in 1784 are widely recorded across much of western and central mainland Europe (Demarée, 2006; Brázdil et al., 2010, 2012) (Fig. 5). In the River Mosel, the 28 February 1784 flood water-level was significantly higher than any other recorded during the past millennium (Sartor et al., 2010), although any discharge estimation should consider that ice jams can raise water levels to much higher elevations than open-water floods (Beltaos, 2008). Other factors enhancing flood severity through time includes timing of melting of glaciers (Debret et al., 2010). Global warming is introducing changes in the spatial (latitudinal) and temporal (seasonal) distribution of flooding related to ice and snowmelt (Beltaos and Prowse, 2009). For example, changes in the hydrometeorological conditions that generate flooding may enhance flood magnitude in Norway, due to an earlier onset of snowmelt related to flooding in the region (Hisdal et al., 2006), whereas in mainland Europe, flooding related to ice-jams are now unlikely to occur (Kundzewicz et al., 2014).

#### 5.4 Historical floods in a non-stationary hydrology

The comparative analysis of historical records at different catchments across Europe points to the fact that the temporal distribution of flood frequency is predominantly modulated by regional meteorological triggers (Glaser et al., 2010). In regions where floods are generated by several types of weather conditions, each flood population is composed by a probability distribution resulting in mixed distributions. Long-term climate variability may alter the seasonal weather patterns producing floods (summer, winter, snowmelt, etc.) and consequently the assumption of stationarity of the flood frequency distribution. Stationarity has been qualitatively described as the idea that natural sys-

## Quantitative historical hydrology in Europe

G. Benito et al.

Title Page

Abstract

Introduction

Conclusions

References

Tables

Figures



Back

Close

Full Screen / Esc

Printer-friendly Version

Interactive Discussion



tems oscillate within an unchanging envelope of variability (Milly et al., 2008). In the case of extreme events, secular records of historical floods show a temporal variability (clusters) fluctuating at multi-decadal time scale. However, the underlying driving factors causing past departures from stationarity are far from being random phenomena.

5 The temporal changes in the trajectory and statistics of a variable may be linked to natural, low-frequency variations of the atmospheric circulation, external forcings (solar cycles) or anthropogenic changes. Therefore, a detail characterisation of natural variability of past floods will facilitate the attribution and modelling of future variability due to nature and human impacts. The statistical parameters may show increasing/decreasing changes that can be modelled (as a trend or smooth function) using time as covariate (Villarini et al., 2009), or they can be related to hydro-climatic covariates such as circulation indices (e.g. Pacific Decadal Oscillation-PDO, North Atlantic Oscillation-NAO, Arctic Oscillation-AO) characterising this low frequency climatic variability (López and Francés, 2013). The application of these non-stationary models to historical and palaeoflood hydrology requires a numerical characterisation of the occurrence rate (covariate) during the recorded period. Several studies have demonstrated the relationships between flood frequency and magnitude with circulation indices, such as NAO index (Salgueiro et al., 2013). The application of a non-stationary flood frequency analysis in a 300 yr record with 32 documented floods ( $> 350 \text{ m}^3 \text{ s}^{-1}$ ) of the River Tagus were successful to model the fluctuations of flood quantiles (e.g. “100 year flood”) using the North Atlantic Oscillation index and a reservoir index as external covariates (Machado et al., 2015). This non-stationary modelling was based on Generalized Additive Models for Location, Scale and Shape parameters (GAMLSS; Rigby and Stasinopoulos, 2005) that described the temporal variation of statistical parameters (mean, variance) in probability distribution functions (Villarini et al., 2010; López and Francés, 2013). In this example, the non-stationary models show that the peak flood associated with a “hundred year” flood (0.01 annual exceedance probability) may range between 4180 and  $560 \text{ m}^3 \text{ s}^{-1}$ , whereas the same model under stationary conditions provided the best fitting results to a log-normal distribution, with a discharge of  $1450 \text{ m}^3 \text{ s}^{-1}$  (Fig. 9).

**Quantitative  
historical hydrology  
in Europe**

G. Benito et al.

[Title Page](#)[Abstract](#)[Introduction](#)[Conclusions](#)[References](#)[Tables](#)[Figures](#)[Back](#)[Close](#)[Full Screen / Esc](#)[Printer-friendly Version](#)[Interactive Discussion](#)

These results illustrate that under stationary statistics the risk assumed is much higher than the one established in the design of infrastructures. Moreover, concepts such as return period, design quantile (return level), and risk under non-stationary conditions should be changed when the annual probability changes every year (Obeysekera and Salas, 2014).

## 6 Concluding remarks

This paper presents a review of the scientific progress in the quantification of large historical floods since the early stages prior to the automatic hydrological stations. In the last two decades, new approaches have been developed to obtain continuous and reliable flood magnitude data sets from documentary records, their statistical analysis and temporal patterns, illustrating the strength, limitation and future prospects of various methods. Most early discharge computations were obtained at sites with known water elevation from flood marks or by extrapolation of a rating curve at sites with staff gauge. Only in the last decades, flood descriptions from rich documentary evidence have been used to estimate discharges of floods exceeding a threshold of perception, extending the record of flood discharges up to several hundreds of years. The reconstruction of secular historical records of extreme floods is relevant to solve major scientific and engineering problems: (1) flood hazard assessment using FFA (data censored over thresholds of perception), and (2) quantification of the largest discharges in a given catchment as evidence for a deterministic approach in safety risk analysis of critical facilities (dams, bridges, power plants). The historical flood records have gained attention among hydrologists on the background of new statistical methods of FFA using non-systematic data and recently in the analysis of non-stationarity modelling. However, the use of historical flood records for flood hazard studies is still scarce in the practical realm. Documentary flood data can benefit from the combined use with palaeoflood records such as fluvial sediments, botanical- and dendrochronological records, flood-produced detrital layers in lakes and marine records. In particular, fluvial sediments

Title Page

Abstract

Introduction

Conclusions

References

Tables

Figures



Back

Close

Full Screen / Esc

Printer-friendly Version

Interactive Discussion



deposited in slackwater environments have been demonstrated as very efficient to be combined with documentary data sets to improve the flood frequency analysis of rare and extreme floods. Europe holds numerous, unexplored archives in relation with historical floods, their causes and the socio-economic impacts. There is great opportunity to generate scientific knowledge about the largest and rarest floods reported through historical times and use them to improve the social conscience and perception of natural risks. The presented paper is a significant contribution to historical hydrology in Europe (Brázdil et al., 2006b, 2012) extending its potential on quantification of past documentary-based floods in Europe.

*Acknowledgements.* G. Benito and M. J. Machado were funded by the Spanish Ministry of Economy and Competitiveness through the research projects CLARIES (CGL2011-29176), PALEOMED (CGL2014-58127-C3-1-R), and by the CSIC PIE Intramural Project (201430E003). R. Brázdil was supported by Grant Agency of the Czech Republic for the project no. P209/11/0956. J. Herget appreciates financial support from the German Research Foundation DFG (HE 3006/9-1).

## References

- Albenga, G.: I ponti romani, Annali dei Lavori Pubblici, (già Giornale del Genio Civile), Roma, 78, 58–64, 1940.
- Anderson, J. D.: A History of Aerodynamics and its Impact on Flying Machines, Cambridge University Press, New York, NY, 1997.
- Baker, V. R.: Geomorphological understanding of floods, *Geomorphology*, 10, 139–156, doi:10.1016/0169-555x(94)90013-2, 1994.
- Baker, V. R.: Paleoflood hydrology: origin, progress, prospects, *Geomorphology*, 101, 1–13, doi:10.1016/j.geomorph.2008.05.016, 2008.
- Balasch, J. C., Ruiz-Bellet, J. L., and Tuset, J.: Historical flash floods retromodelling in the Ondara River in Tàrraga (NE Iberian Peninsula), *Nat. Hazards Earth Syst. Sci.*, 11, 3359–3371, doi:10.5194/nhess-11-3359-2011, 2011.
- Barriendedos, M. and Coeur, D.: Flood data reconstruction in historical times from noninstrumental sources in Spain and France, in: Systematic, Palaeoflood and Historical Data for the

## Quantitative historical hydrology in Europe

G. Benito et al.

[Title Page](#)

[Abstract](#)

[Introduction](#)

[Conclusions](#)

[References](#)

[Tables](#)

[Figures](#)

[⏪](#)

[⏩](#)

[◀](#)

[▶](#)

[Back](#)

[Close](#)

[Full Screen / Esc](#)

[Printer-friendly Version](#)

[Interactive Discussion](#)



Improvement of Flood Risk Estimation. Methodological Guidelines, edited by: Benito, G., Thorndycraft, V. R., Centro de Ciencias Medioambientales-CSIC, Madrid, 29–42, 2004.

Barriendos, M. and Martin-Vide, J.: Secular climatic oscillations as indicated by catastrophic floods in the Spanish Mediterranean coastal area (14th–19th centuries), *Climatic Change*, 38, 473–491, doi:10.1023/A:1005343828552, 1998.

Barriendos, M. and Rodrigo, F. S.: Study of historical flood events on Spanish rivers using documentary data, *Hydrolog. Sci. J.*, 51, 765–783, doi:10.1623/hysj.51.5.765, 2006.

Barriendos, M., Coeur, D., Lang, M., Llasat, M. C., Naulet, R., Lemaitre, F., and Barrera, A.: Stationarity analysis of historical flood series in France and Spain (14th–20th centuries), *Nat. Hazards Earth Syst. Sci.*, 3, 583–592, doi:10.5194/nhess-3-583-2003, 2003.

Barriendos, M., Ruiz-Bellet, J. L., Tuset, J., Mazón, J., Balasch, J. C., Pino, D., and Ayala, J. L.: The “Prediflood” database of historical floods in Catalonia (NE Iberian Peninsula) AD 1035–2013, and its potential applications in flood analysis, *Hydrol. Earth Syst. Sci.*, 18, 4807–4823, doi:10.5194/hess-18-4807-2014, 2014.

Bazin, H.: Étude d'une nouvelle formule pour calculer le débit des canaux découverts, *Annales des ponts et chaussées*, 14, 20–70, 1897.

Beltaos, S.: Progress in the study and management of river ice jams, *Cold Reg. Sci. Technol.*, 51, 2–19, 2008.

Beltaos, S. and Prowse, T.: River-ice hydrology in a shrinking cryosphere, *Hydrol. Processes*, 23, 122–144, doi:10.1002/hyp.7165, 2009.

Bendini, C.: Bacini della Toscana, in: L'evento alluvionale del Novembre 1966, Ministero dei Lavori Pubblici, Ministero dell'Agricoltura e delle Foreste, Commissione Interministeriale per lo studio della sistemazione idraulica e della difesa del suolo, 41–85, 1969.

Benito, G. and Díez-Herrero, A.: Palaeoflood Hydrology: Reconstructing rare events and extreme flood discharges, in: *Hydro-Meteorological Hazards, Risks, and Disasters*, edited by: Paron, P., and Di Baldassarre, G., Elsevier, Amsterdam, 65–103, 2015.

Benito, G. and O'Connor, J. E.: Quantitative paleoflood hydrology, in: John F. Shroder (Editor-in-chief), Wohl, E. (Volume Editor), *Treatise on Geomorphology*, vol. 9, Fluvial Geomorphology, Academic Press, San Diego, 459–474, 2013.

Benito, G. and Thorndycraft, V. R.: Systematic, Palaeoflood and Historical data for the Improvement of flood risk estimation, CSIC-Centro de Ciencias Medioambientales, Madrid, 115 pp., 2004.

## Quantitative historical hydrology in Europe

G. Benito et al.

Title Page

Abstract

Introduction

Conclusions

References

Tables

Figures



Back

Close

Full Screen / Esc

Printer-friendly Version

Interactive Discussion



Benito, G., Díez-Herrero, A., and Fernández De Villalta, M.: Magnitude and frequency of flooding in the Tagus basin (Central Spain) over the last millennium, *Climatic Change*, 58, 171–192, doi:10.1023/A:1023417102053, 2003a.

Benito, G., Sopeña, A., Sanchez-Moya, Y., Machado, M. J., and Perez-Gonzalez, A.: Palaeoflood record of the Tagus River (Central Spain) during the Late Pleistocene and Holocene, *Quaternary Sci. Rev.*, 22, 1737–1756, doi:10.1016/s0277-3791(03)00133-1, 2003b.

Benito, G., Lang, M., Barriendos, M., Llasat, M. C., Francés, F., Ouarda, T., Thorndycraft, V. R., Enzel, Y., Bardossy, A., Coeur, D., and Bobee, B.: Use of systematic, palaeoflood and historical data for the improvement of flood risk estimation. Review of scientific methods, *Nat. Hazards*, 31, 623–643, 2004.

Benito, G., Rico, M., Sánchez-Moya, Y., Sopeña, A., Thorndycraft, V. R., and Barriendos, M.: The impact of late Holocene climatic variability and land use change on the flood hydrology of the Guadalentín River, southeast Spain, *Global Planet. Change*, 70, 53–63, 2010.

Benito, G., Botero, B. A., Thorndycraft, V. R., Rico, M., Sánchez-Moya, Y., Sopeña, A., Machado, M. J., and Dahan, O.: Rainfall-runoff modelling and palaeoflood hydrology applied to reconstruct centennial scale records of flooding and aquifer recharge in ungauged ephemeral rivers, *Hydrol. Earth Syst. Sci.*, 15, 1185–1196, doi:10.5194/hess-15-1185-2011, 2011.

Benson, M. A.: Use of historical data in flood-frequency analysis, *Am. Geophys. Union Trans.*, 31, 419–424, 1950.

Blöschl, G., Nester, T., Komma, J., Parajka, J., and Perdigão, R. A. P.: The June 2013 flood in the Upper Danube Basin, and comparisons with the 2002, 1954 and 1899 floods, *Hydrol. Earth Syst. Sci.*, 17, 5197–5212, doi:10.5194/hess-17-5197-2013, 2013.

Botero, B. A. and Francés, F.: Estimation of high return period flood quantiles using additional non-systematic information with upper bounded statistical models, *Hydrol. Earth Syst. Sci.*, 14, 2617–2628, doi:10.5194/hess-14-2617-2010, 2010.

Brázdil, R.: The history of floods on the rivers Elbe and Vltava in Bohemia, *Erfurter Geographische Studien*, 7, 93–108, 1998.

Brázdil, R., Dobrovolný, P., Elleder, L., Kakos, V., Kotyza, O., Květoň, V., Macková, J., Müller, M., Štekl, J., Tolasz, R., and Valášek, H.: Historical and Recent Floods in the Czech Republic, Masaryk University, Czech Hydrometeorological Institute, Brno, Praha, 2005a.



## Quantitative historical hydrology in Europe

G. Benito et al.

[Title Page](#)

[Abstract](#)

[Introduction](#)

[Conclusions](#)

[References](#)

[Tables](#)

[Figures](#)



[Back](#)

[Close](#)

[Full Screen / Esc](#)

[Printer-friendly Version](#)

[Interactive Discussion](#)



- Brázdil, R., Pfister, C., Wanner, H., von Storch, H., and Luterbacher, J.: Historical climatology in Europe – the state of the art, *Climatic Change*, 70, 363–430, doi:10.1007/s10584-005-5924-1, 2005b.
- Brázdil, R., Kotyza, O., and Dobrovolný, P.: July 1432 and August 2002 – two millennial floods in Bohemia?, *Hydrolog. Sci. J.*, 51, 848–863, doi:10.1623/hysj.51.5.848, 2006a.
- Brázdil, R., Kundzewicz, Z. W., and Benito, G.: Historical hydrology for studying flood risk in Europe, *Hydrolog. Sci. J.*, 51, 739–764, doi:10.1623/hysj.51.5.739, 2006b.
- Brázdil, R., Demarée, G. R., Deutsch, M., Garnier, E., Kiss, A., Luterbacher, J., Macdonald, N., Rohr, C., Dobrovolný, P., and Chromá, K.: European floods during the winter 1783/1784 – scenarios of an extreme event during the “Little Ice Age”, *Theor. Appl. Climatol.*, 100, 163–189, doi:10.1007/s00704-009-0170-5, 2010.
- Brázdil, R., Kundzewicz, Z. W., Benito, G., Demarée, G., Macdonald, N., and Roald, L. A.: Historical floods in Europe in the past millennium, in: *Changes in Flood Risk in Europe*, edited by: Kundzewicz, Z. W., IAHS Special Publication 10, IAHS Press and CRC Press/Balkema, Wallingford, UK, 121–166, 2012.
- Bürger, K., Dostal, P., Seidel, J., Imbery, F., Barriendos, M., Mayer, H., and Glaser, R.: Hydrometeorological reconstruction of the 1824 flood event in the Neckar River basin (southwest Germany), *Hydrolog. Sci. J.*, 51, 864–877, doi:10.1623/hysj.51.5.864, 2006.
- Calenda, G., Mancini, C. P., and Volpi, E.: Distribution of the extreme peak floods of the Tiber River from the XV century, *Adv. Water Resour.*, 28, 615–625, doi:10.1016/j.advwatres.2004.09.010, 2005.
- Calenda, G., Mancini, C. P., and Volpi, E.: Selection of the probabilistic model of extreme floods: the case of the River Tiber in Rome, *J. Hydrol.*, 371, 1–11, doi:10.1016/j.jhydrol.2009.03.010, 2009.
- Camuffo, D. and Enzi, S.: The analysis of two bi-millennial series: Tiver and Po river floods, in: *Climatic Variations and Forcing Mechanisms of the Last 2000 Years*, edited by: Jones, P. D., Bradley, R. S., and Jouzel, J., Springer, Berlin, 433–450, 1996.
- Camuffo, D., Sturaro, G., and Benito, G.: An opposite flood pattern teleconnection between the Tagus (Iberian Peninsula) and Tiber (Italy) rivers during the last 1000 years, in: *Palaeofloods and Climatic Variability: Applications in Flood Risk Management*, edited by: Thorndy-craft, V. R., Benito, G., Barriendos, M., and Llasat, M. C., CSIC-CCM, Madrid, 295–300, 2003.



## Quantitative historical hydrology in Europe

G. Benito et al.

Title Page

Abstract

Introduction

Conclusions

References

Tables

Figures



Back

Close

Full Screen / Esc

Printer-friendly Version

Interactive Discussion



- Caporali, E., Rinaldi, M., and Casagli, N.: The Arno River Floods, *Giornale di Geologia Applicata*, 1, 177–192, 2005.
- Casas, A., Benito, G., Diez-Herrero, A., and Barriendos, M.: SPHERE-GIS: Implementation of an historical and palaeoflood Geographical Information System, in: *Palaeofloods, Historical Data & Climatic Variability: Applications in Flood Risk Assessment*, edited by: Thorndycraft, V. R., Benito, G., Llasat, C., and Barriendos, M., CSIC, Madrid, 2003.
- Cattaneo, M., Maione, U., Mignosa, P., and Tomirotti, M.: L'evento di piena dell'ottobre 2000 sul bacino del Ticino, *L'acqua*, 6, 7–16, 2000.
- Chow, V. T.: *Open-Channel Hydraulics*, McGraw-Hill, Inc., New York, 680 pp., 1959.
- Coeur, D.: Genesis of a public policy for flood management in France: The case of the Grenoble Valley (XVIIth–XIXth centuries), in: *Palaeofloods, Historical Data & Climatic Variability: Applications in Flood Risk Assessment*, edited by: Thorndycraft, V. R., Benito, G., Llasat, M. C., and Barriendos, M., CCMA-CSIC, Madrid, 363–368, 2003.
- Coeur, D.: La plaine de Grenoble face aux inondations. Genèse d'une politique publique du XVIII<sup>e</sup> au XX<sup>e</sup> siècle, Editions Quae, Versailles, 328 pp., 2008.
- Cohn, T. A., Lane, W. L., and Baier, W. G.: An algorithm for computing moments-based flood quantile estimates when historical flood information is available, *Water Resour. Res.*, 33, 2089–2096, doi:10.1029/97wr01640, 1997.
- Cook, J. L.: Quantifying peak discharges for historical floods, *J. Hydrol.*, 96, 29–40, doi:10.1016/0022-1694(87)90141-7, 1987.
- Corella, J. P., Benito, G., Rodriguez-Lloveras, X., Brauer, A., and Valero-Garcés, B. L.: Annually-resolved lake record of extreme hydro-meteorological events since AD 1347 in NE Iberian Peninsula, *Quaternary Sci. Rev.*, 93, 77–90, doi:10.1016/j.quascirev.2014.03.020, 2014.
- DDE: Atlas des Points de plus Hautes Eaux (PHE) du GARD: Crue des 8 et 9 septembre 2002 sur le département du Gard, Direction Départementale de l'Équipement du Gard, 2003.
- de Marchi, G.: Ripercussioni della regolazione del lago maggiore sulle piene del lago e su quelle del Ticino a Sesto Calende. Consorzio del Ticino Studi per la regolazione del lago maggiore e per la utilizzazione delle acque del fiume Ticino, Consorzio del Ticino (Milano), 85 pp., 1950.
- De Mardigny, M.: Mémoire sur les inondations des rivières de l'Ardèche, *Annales des Ponts et Chaussées*, 19, 249–296, 1860.
- Debret, M., Chapron, E., Desmet, M., Rolland-Revel, M., Magand, O., Trentesaux, A., Bout-Roumazeille, V., Nomade, J., and Arnaud, F.: North western Alps Holocene paleohydrology

## Quantitative historical hydrology in Europe

G. Benito et al.

[Title Page](#)

[Abstract](#)

[Introduction](#)

[Conclusions](#)

[References](#)

[Tables](#)

[Figures](#)

[⏪](#)

[⏩](#)

[⏴](#)

[⏵](#)

[Back](#)

[Close](#)

[Full Screen / Esc](#)

[Printer-friendly Version](#)

[Interactive Discussion](#)



recorded by flooding activity in Lake Le Bourget, France, *Quaternary Sci. Rev.*, 29, 2185–2200, doi:10.1016/j.quascirev.2010.05.016, 2010.

Demarée, G. R.: The catastrophic inundations of February 1784 in and around Belgium – a little ice age event of frost, snow, river ice . . . and inundations, *Hydrolog. Sci. J.*, 51, 878–898, doi:10.1623/hysj.51.5.878, 2006.

Denlinger, R. P., O’Connell, D. R. H., and House, P. K.: Robust determination of stage and discharge: an example from an extreme flood on the Verde River, Arizona, in: *Ancient Floods, Modern Hazards: Principles and Applications of Paleoflood Hydrology*. Water Science and Application Series, Vol. 5, edited by: House, P. K., Webb, R. H., Baker, V. R., and Levish, D. R., American Geophysical Union, Washington, DC, 127–146, 2002.

Deutsch, M.: Remarks on the history of the Prussian gauging-system in the 19th century, *Hydrol. Wasserbewirts.*, 54, 65–74, 2010.

Deutsch, M. and Pörtge, K.-H.: Hochwassermarken in Thüringen, Thüringen Ministerium für Landwirtschaft, Forsten, Umwelt und Naturschutz, Freistaat Thüringen, 2009.

Deutsch, M., Grünewald, U., and Rost, K. T.: Historische Hochwassermarken – Ausgangssituation, Probleme und Möglichkeiten bei der heutigen Nutzung, in: *Risikomanagement extremer hydrologischer Ereignisse, Beiträge zum Tag der Hydrologie 2006 in München*, Forum für Hydrologie und Wasserbewirtschaftung, Hennef, Germany, 59–70, 2006.

Dooge, J. C. I.: The Manning formula in context, in: *Channel Flow Resistance – Centennial of Manning’s Formula*, edited by: Yen, B. C., Water Resources Publications, Littleton, 136–185, 1992.

Driessen, A. M. A. J.: Watersnood Tussen Maas en Waal: Overstromingsrampen in Het Rivierengebied Tussen 1780 en 1810, Walburg Pers, Zutphen, 1994.

Duband, D.: La genèse des crues dans le bassin de la Loire, *La Houille Blanche*, 6–7, 54–62, 1996.

Dumas, D.: The two memorable floods on the Isère in Grenoble (1651 and 1859): an analysis of estimates by M. Pardé, *Rev. Géogr. Alpine*, 92, 39–49, 2004.

Elleder, L.: Pražský Bradáč, jeho stáří, účel a historie (The Prague Bradáč, its age, purpose and history), *Historica Pragensia*, 1, 301–334, 2003.

Elleder, L.: Reconstruction of the 1784 flood hydrograph for the Vltava River in Prague, Czech Republic, *Global Planet. Change*, 70, 117–124, doi:10.1016/j.gloplacha.2009.11.012, 2010.

## Quantitative historical hydrology in Europe

G. Benito et al.

[Title Page](#)

[Abstract](#)

[Introduction](#)

[Conclusions](#)

[References](#)

[Tables](#)

[Figures](#)



[Back](#)

[Close](#)

[Full Screen / Esc](#)

[Printer-friendly Version](#)

[Interactive Discussion](#)



- Elleder, L., Herget, J., Roggenkamp, T., and Niessen, A.: Historic floods in the city of Prague – a reconstruction of peak discharges for 1481–1825 based on documentary sources, *Hydrol. Res.*, 44, 202–214, doi:10.2166/nh.2012.161, 2013.
- England, J. F. J., Salas, J. D., and Jarrett, R. D.: Comparisons of two moments-based estimators that utilize historical and paleoflood data for the log-Pearson Type III distribution, *Water Resour. Res.*, 39, SWC-5-1–SWC-5-16, 2003.
- Fernandez Bono, J. F. and Grau-Gimeno, P.: Peak discharge estimation for historical flood events, in: *Palaeofloods and Climatic Variability: Applications in Flood Risk Management*, edited by: Thorndycraft, V. R., Benito, G., Barriendos, M., and Llasat, M. C., CSIC-CCMA, Madrid, 197–201, 2003.
- Fernandez de Villalta, M., Benito, G., and Diez-Herrero, A.: Historical flood data analysis using a GIS: The Paleotagus database, in: *The Use of Historical Data in Natural Hazard Assessments*, edited by: Glade, T., Albin, P., and Francés, F., *Advances in Natural and Technological Hazards Research*, 17, Kluwer Academic Publishers, Dordrecht, 101–112, 2001.
- Fernández-Casado, C.: *Historia del Puente en España: Puentes Romanos*, Textos universitarios, CSIC, Madrid, 604 pp., 2008.
- Fisher, R. A. and Tippett, L. H. C.: Limiting forms of the frequency distribution of the largest and smallest member of a sample, *Proc. Cambridge Philos. Soc.*, 24, 180–190, 1928.
- Foster, H. A.: Theoretical frequency curves and the application to engineering problems, *Am. Soc. Civil Engineers Trans.*, 87, 142–203, 1924.
- Francés, F.: Incorporating non-systematic information to flood frequency analysis using maximum likelihood method, in: *The Use of Historical Data in Natural Hazard Assessments*, edited by: Glade, T., Albin, P., and Francés, F., Kluwer, Dordrecht, 89–99, 2001.
- Francés, F.: Flood frequency analysis using systematic and non-systematic information, in: *Systematic, Palaeoflood and Historical Data for the Improvement of Flood Risk Estimation* edited by: Benito, G., and Thorndycraft, V. R., CSIC-Centro de Ciencias Medioambientales, Madrid, 55–70, 2004.
- Francés, F., Salas, J. D., and Boes, D. C.: Flood frequency-analysis with systematic and historical or paleoflood data-based on the 2-parameter General Extreme-Value models, *Water Resour. Res.*, 30, 1653–1664, doi:10.1029/94wr00154, 1994.
- Francou, J. and Rodier, J. A.: Essai de classification des crues maximales observées dans le monde, *Cah. O. R. S. T. O. M. sér. Hydrol.*, 4, 19–46, 1967.

## Quantitative historical hydrology in Europe

G. Benito et al.

[Title Page](#)

[Abstract](#)

[Introduction](#)

[Conclusions](#)

[References](#)

[Tables](#)

[Figures](#)



[Back](#)

[Close](#)

[Full Screen / Esc](#)

[Printer-friendly Version](#)

[Interactive Discussion](#)



Ganguillet, E. and Kutter, W. R.: Versuch zur Aufstellung einer neuen allgemeinen Formel für die gleichförmige Bewegung des Wassers in Canälen und Flüssen, Zeitschrift des Oesterreichischen Ingenieur und Architekten Vereines, 21, 6–25, 46–59, 1869.

Giovannelli, E. and Allodi, G.: Il Po a Pontelagoscuro-Scale delle portate e valori giornalieri mensili pel venticinquennio 1917–1941, Internal Report of the Hydrographical Office of the Po River, Parma, Italy, 1960s (undated report).

Glaser, R., Riemann, D., Schönbein, J., Barriendos, M., Brázdil, R., Bertolin, C., Camuffo, D., Deutsch, M., Dobrovolný, P., van Engelen, A., Enzi, S., Halíčková, M., Koenig, S. J., Kotyza, O., Limanówka, D., Macková, J., Sghedoni, M., Martin, B., and Himmelsbach, I.: The variability of European floods since AD 1500, *Climatic Change*, 101, 235–256, doi:10.1007/s10584-010-9816-7, 2010.

Gumbel, E. J.: Floods estimated by probability method, *Engin. News-Record*, 134, 833–837, 1945.

Hager, W. H.: Gauckler et la formule d'écoulement uniforme, *La Houille Blanche*, 3, 17–22, 2005.

Hall, J., Arheimer, B., Borga, M., Brázdil, R., Claps, P., Kiss, A., Kjeldsen, T. R., Kriaučiūnienė, J., Kundzewicz, Z. W., Lang, M., Llasat, M. C., Macdonald, N., McIntyre, N., Mediero, L., Merz, B., Merz, R., Molnar, P., Montanari, A., Neuhold, C., Parajka, J., Perdigão, R. A. P., Plavcová, L., Rogger, M., Salinas, J. L., Sauquet, E., Schär, C., Szolgay, J., Viglione, A., and Blöschl, G.: Understanding flood regime changes in Europe: a state-of-the-art assessment, *Hydrol. Earth Syst. Sci.*, 18, 2735–2772, doi:10.5194/hess-18-2735-2014, 2014.

Herget, J.: Am Anfang war die Sintflut – Hochwasserkatastrophen in der Geschichte, Primus Verlag, Darmstadt, 2012.

Herget, J. and Meurs, H.: Reconstructing peak discharges for historic flood levels in the city of Cologne, Germany, *Global Planet. Change*, 70, 108–116, 2010.

Herget, J., Roggenkamp, T., and Krell, M.: Estimation of peak discharges of historical floods, *Hydrol. Earth Syst. Sci.*, 18, 4029–4037, doi:10.5194/hess-18-4029-2014, 2014.

Herget, J., Kapala, A., Krell, M., Rustemeier, E., Simmer, C., and Wyss, A.: The millennium flood of July 1342 revisited, *Catena*, 130, 82–94, doi:10.1016/j.catena.2014.12.010, 2015.

Herschel, C.: On the origin of the Chézy formula, *J. Assoc. Engin. Soc.*, 18, 363–368, 1897.

## Quantitative historical hydrology in Europe

G. Benito et al.

[Title Page](#)

[Abstract](#)

[Introduction](#)

[Conclusions](#)

[References](#)

[Tables](#)

[Figures](#)

[⏪](#)

[⏩](#)

[◀](#)

[▶](#)

[Back](#)

[Close](#)

[Full Screen / Esc](#)

[Printer-friendly Version](#)

[Interactive Discussion](#)



Hirschboeck, K. K., Ely, L., and Maddox, R. A.: Hydroclimatology of meteorologic floods, in: Inland Flood Hazards: Human Riparian and Aquatic Communities, edited by: Wohl, E., Cambridge University Press, Cambridge and New York, 39–72, 2000.

Hisdal, H., Roald, L. A., and Beldring, S.: Past and future changes in flood and drought in the Nordic countries, IAHS-AISH Publication, 502–507, 2006.

HOPR: Idrometro di Pontelagoscuro-Effemeridi dal 1807 al 1930 (The hydrometer at Pontelagoscuro-ephemerides from 1807 to 1930), Hydrographical Office of the Po River, Publication No. 1539, Parma, 69 pp., 1935.

Hydrologic Engineering Center: HEC-RAS, River Analysis System, Hydraulics Version 4.1. Reference Manual, (CPD-69), US Army Corps of Engineers, Davis, 411 pp., 2010.

IPCC: Climate Change 2013: The Physical Science Basis. Contribution of Working Group I to the Fifth Assessment Report of the Intergovernmental Panel on Climate Change, edited by: Stocker, T. F., Qin, D., Plattner, G.-K., Tignor, M. M. B., Allen, S. K., Boschung, J., Nauels, A., Xia, Y., Bex, V., and Midgley, P. M., Cambridge University Press, Cambridge, UK and New York, NY, USA, 1535 pp., 2013.

Kirsch, F. and Pohl, R.: Modellierung historischer Abflussverhältnisse für die Hochwasserprognose, Wasserwirtschaft, 101, 14–19, 2011.

Kiss, A., Brázdil, R., and Blöschl, G.: Floods and their changes in historical times – an European perspective, Hydrol. Earth Syst. Sci. Discuss., special issue, in preparation, 2015.

Kjeldsen, T. R., Macdonald, N., Lang, M., Mediero, L., Albuquerque, T., Bogdanowicz, E., Brázdil, R., Castellarin, A., David, V., Fleig, A., Guel, G. O., Kriauciuniene, J., Kohnova, S., Merz, B., Nicholson, O., Roald, L. A., Salinas, J. L., Saraukiene, D., Sraj, M., Strupczewski, W., Szolgay, J., Toumazis, A., Vanneuville, W., Veijalainen, N., and Wilson, D.: Documentary evidence of past floods in Europe and their utility in flood frequency estimation, J. Hydrol., 517, 963–973, doi:10.1016/j.jhydrol.2014.06.038, 2014.

Klemeš, V.: The improbable probabilities of extreme floods and droughts, in: Hydrology of Disasters, edited by: Starosolszky, O. and Melder, O. M., James and James, London, 43–51, 1989.

Knox, J. C.: Large increases in flood magnitude in response to modest changes in climate, Nature, 361, 430–432, 1993.

Knox, J. C.: Sensitivity of modern and Holocene floods to climate change, Quaternary Sci. Rev., 19, 439–457, 2000.

# HESSD

12, 4413–4469, 2015

## Quantitative historical hydrology in Europe

G. Benito et al.

[Title Page](#)

[Abstract](#)

[Introduction](#)

[Conclusions](#)

[References](#)

[Tables](#)

[Figures](#)



[Back](#)

[Close](#)

[Full Screen / Esc](#)

[Printer-friendly Version](#)

[Interactive Discussion](#)



Kotzya, O.: Nejextrémnější velké vody na dolním českém toku řeky Labe v letech 1118–1598 a otázka věrohodnosti značek povodní na zámecké skále v Děčíně, v Litoměřicích a Ústí nad Labem (The most extreme high waters on the lower reach of the Czech Elbe in 1118–1598 and a question of reliability of flood marks on the castle rock at Děín, in Litoměřice and Ústí nad Labem), *Podřipský Muzejník*, 2, 31–69, 2006.

Kresser, W.: Zur Geschichte der Pegel in Österreich, *Österreichische Wasserwirtschaft*, 2, 105–109, 1950.

Kresser, W.: *Die Hochwässer der Donau*, Springer Verlag, Wien, 1957.

Kuczera, G.: Comprehensive at-site flood frequency analysis using Monte Carlo Bayesian inference, *Water Resour. Res.*, 35, 1551–1557, 1999.

Kundzewicz, Z. W., Kanae, S., Seneviratne, S. I., Handmer, J., Nicholls, N., Peduzzi, P., Mechler, R., Bouwer, L. M., Arnell, N., Mach, K., Muir-Wood, R., Brakenridge, G. R., Kron, W., Benito, G., Honda, Y., Takahashi, K., and Sherstyukov, B.: Flood risk and climate change: global and regional perspectives, *Hydrolog. Sci. J.*, 59, 1–28, doi:10.1080/02626667.2013.857411, 2014.

Kutija, V.: Hydraulic modelling of floods, in: *Palaeofloods, Historical Data and Climatic variability: Applications in Flood Risk Assessment*, edited by: Thorndycraft, V. R., Benito, G., Barriendos, M., and Llasat, M. C., CSIC, Madrid, 163–169, 2003.

Lang, M. and Coeur, D.: *Les inondations remarquables en France. Inventaire 2011 pour la directive Inondation*, Hors-Collection, Editions Quae, Versailles, France, 640 pp., 2014.

Lang, M., Ouarda, T. B. M. J., and Bobée, B.: Towards operational guidelines for over-threshold modeling, *J. Hydrol.*, 225, 103–117, 1999.

Lang, M., Coeur, D., and Brochot, S.: *Information historique et ingénierie des risques naturels: l'Isère et le torrent du Manival*, edited by: Etudes du CEMAGREF, s. G. d. m. a., Grenoble, 2003.

Lang, M., Fernandez Bono, J. F., Recking, A., Naulet, R., and Grau-Gimeno, P.: Methodological guide for paleoflood and historical peak discharge estimation, in: *Systematic, Palaeoflood and Historical Data for the Improvement of Flood Risk Estimation: Methodological Guidelines*, edited by: Benito, G. and Thorndycraft, V. T., CSIC, Madrid, 43–53, 2004.

Lanser, O.: Zur Geschichte des hydrometrischen Meßwesens, *Blätter für Technikgeschichte*, 15, 25–57, 1953.

Leese, M.: Use of censored data in the estimation of Gumbel distribution parameters for annual maximum flood series, *Water Resour. Res.*, 9, 1534–1542, 1973.

# HESSD

12, 4413–4469, 2015

## Quantitative historical hydrology in Europe

G. Benito et al.

[Title Page](#)[Abstract](#)[Introduction](#)[Conclusions](#)[References](#)[Tables](#)[Figures](#)[⏪](#)[⏩](#)[◀](#)[▶](#)[Back](#)[Close](#)[Full Screen / Esc](#)[Printer-friendly Version](#)[Interactive Discussion](#)

- Lescure, M.: Politique de gestion des inondations en France. L'exemple du Gard, application au Bassin des Gardons, Actes des Journées Techniques/Risques Naturels: Inondation, Prévision, Protection, Batna, 25–36, 2004.
- López, J. and Francés, F.: Non-stationary flood frequency analysis in continental Spanish rivers, using climate and reservoir indices as external covariates, *Hydrol. Earth Syst. Sci.*, 17, 3189–3203, doi:10.5194/hess-17-3189-2013, 2013.
- Lorenz, W. and Wolfram, P.: Valley crossings and flood management for ancient Roman Aqueduct Bridges, *J. Irrig. Drain. E.-ASCE*, 137, 816–819, doi:10.1061/(ASCE)IR.1943-4774.0000359, 2011.
- Luo, C.-Z.: Investigation and regionalization of historical floods in China, *J. Hydrol.*, 96, 41–51, doi:10.1016/0022-1694(87)90142-9, 1987.
- Macdonald, N.: On epigraphic records: a valuable resource in reassessing flood risk and long-term climate variability, *Environ. Hist.*, 12, 136–140, 2007.
- Macdonald, N.: Trends in flood seasonality of the River Ouse (Northern England) from archive and instrumental sources since AD 1600, *Climatic Change*, 110, 901–923, doi:10.1007/s10584-011-0117-6, 2012.
- Macdonald, N.: Reassessing flood frequency for the River Trent through the inclusion of historical flood information since AD 1320, *Hydrol. Res.*, 44, 215–233, doi:10.2166/nh.2012.188, 2013.
- Macdonald, N. and Black, A. R.: Reassessment of flood frequency using historical information for the River Ouse at York, UK (1200–2000), *Hydrolog. Sci. J.*, 55, 1152–1162, doi:10.1080/02626667.2010.508873, 2010.
- Macdonald, N., Black, A. R., and Werritty, A.: Historical and pooled flood frequency analysis for the river Ouse, York, UK, in: *Palaeofloods, Historical Data and Climatic Variability: Applications in Flood Risk Assessment*, edited by: Thorndycraft, V. R., Benito, G., Barriendos, M., and Llasat, M. C., 217–222, 2003.
- Macdonald, N., Werritty, A., Black, A. R., and McEwen, L. J.: Historical and pooled flood frequency analysis for the River Tay at Perth, Scotland, *Area*, 38, 34–46, doi:10.1111/j.1475-4762.2006.00673.x, 2006.
- Machado, M. J., Benito, G., Barriendos, M., and Rodrigo, F. S.: 500 years of rainfall variability and extreme hydrological events in southeastern Spain drylands, *J. Arid Environ.*, 75, 1244–1253, doi:10.1016/j.jaridenv.2011.02.002, 2011.



## Quantitative historical hydrology in Europe

G. Benito et al.

Title Page

Abstract

Introduction

Conclusions

References

Tables

Figures

⏪

⏩

◀

▶

Back

Close

Full Screen / Esc

Printer-friendly Version

Interactive Discussion



Machado, M. J., Botero, B. A., López, J., Francés, F., Díez-Herrero, A., and Benito, G.: Flood frequency analysis of historical flood data under stationary and non-stationary modelling, *Hydrol. Earth Syst. Sci. Discuss.*, 12, 525–568, doi:10.5194/hessd-12-525-2015, 2015.

Manning, R.: On the flow of water in open channels and pipes, *Trans. Inst. Civ. Engin. Ireland*, 20, 161–207, 1891.

Medialdea, A., Thomsen, K. J., Murray, A. S., and Benito, G.: Reliability of equivalent-dose determination and age-models in the OSL dating of historical and modern palaeoflood sediments, *Quaternary Geochronol.*, 22, 11–24, doi:10.1016/j.quageo.2014.01.004, 2014.

Middtømme, G. H. and Tingvold, J. K.: Historic extreme floods as input to dam safety analyses, in: *The Extremes of the Extreme: Extraordinary Floods*, edited by: Snorrason, A., Finnsdottir, H. P., and Moss, M. E., Publ. No. 271, IAHS Press, Wallingford, UK, 155–159, 2002.

Milly, P. C. D., Betancourt, J., Falkenmark, M., Hirsch, R. M., Kundzewicz, Z. W., Lettenmaier, D. P., and Stouffer, R. J.: Climate change – stationarity is dead: Whither water management?, *Science*, 319, 573–574, doi:10.1126/science.1151915, 2008.

Monserrate, A.: Reconstrucción de avenidas de finales del siglo XIX en Zaragoza, Master's degree thesis, University of Lleida, Lleida (Spain), 79 pp., 2013.

Mudelsee, M., Børngen, M., Tetzlaff, G., and Grünewald, U.: No upward trends in the occurrence of extreme floods in central Europe, *Nature*, 425, 166–169, doi:10.1038/nature01928, 2003.

Munzar, J., Deutsch, M., Elleder, L., Ondráček, S., Kallabová, E., and Hrádek, M.: Historical floods in Central Europe and their documentation by means of floodmarks and other epigraphical monuments, *Moravian Geogr. Rep.*, 14, 26–44, 2006.

Myers, V. A.: Meteorological estimation of extreme precipitation for spillway design floods, Technical Memorandum WBTM HYDRO-5, Weather Bureau, Washington D. C., 1967.

Natale, L. and Savi, F.: Monte Carlo analysis of probability of inundation of Rome, *Environ. Modell. Softw.*, 22, 1409–1416, 2007.

Natali, S.: *Il Fiume Serchio, Ricerche Storiche e Geografiche*, Maria Pacini Fazzi, Lucca, 1994.

Naulet, R., Lang, M., Cœur, D., and Gigon, C.: Collaboration between historians and hydrologists on the Ardèche river (France), in: *The Use of Historical Data in Natural Hazard Assessments*, edited by: Glade, T., Albin, P., and Francés, F., *Advances in Natural and Technological Hazards Research*, Kluwer, Dordrecht, 113–129, 2001.



## Quantitative historical hydrology in Europe

G. Benito et al.

Title Page

Abstract

Introduction

Conclusions

References

Tables

Figures



Back

Close

Full Screen / Esc

Printer-friendly Version

Interactive Discussion



- Naulet, R., Lang, M., Ouarda, T. B. M. J., Coeur, D., Bobée, B., Recking, A., and Moussay, D.: Flood frequency analysis on the Ardèche river using French documentary sources from the last two centuries, *J. Hydrol.*, 313, 58–78, doi:10.1016/j.jhydrol.2005.02.011, 2005.
- Neppel, L., Renard, B., Lang, M., Ayrat, P.-A., Coeur, D., Gaume, E., Jacob, N., Payraastre, O., Pobanz, K., and Vinet, F.: Flood frequency analysis using historical data: accounting for random and systematic errors, *Hydrolog. Sci. J.*, 55, 192–208, doi:10.1080/02626660903546092, 2010.
- Obeyssekera, J. and Salas, J. D.: Quantifying the uncertainty of design floods under nonstationary conditions, *J. Hydrol. Eng.*, 19, 1438–1446, doi:10.1061/(asce)he.1943-5584.0000931, 2014.
- O'Connell, D. R. H.: Nonparametric Bayesian flood frequency estimation, *J. Hydrol.*, 313, 79–96, doi:10.1016/j.jhydrol.2005.02.005, 2005.
- O'Connell, D. R. H., Ostenaar, D. A., Levis, D. R., and Klinger, R. E.: Bayesian flood frequency analysis with paleohydrologic bound data, *Water Resour. Res.*, 38, 1058, doi:10.1029/2000wr000028, 2002.
- Pardé, M.: Le régime du Rhône et de ses affluents; I étude hydrologique, II Etude générale, II, La genèse des crues, Librairie P. Masson, Lyon, 883 pp., 1925a.
- Pardé, M.: Calcul des débits du Rhône et de ses affluents, Bibliothèque de l'Institut de Géographie Alpine, Université de Grenoble, Allier, Grenoble, 168 pp., 1925b.
- Pardé, M.: Sur la genèse et les caractères de plusieurs grandes inondations récentes, *Ann. Géogr.*, 62, 18–36, 1953.
- Pardé, M.: Sur la puissance des crues en diverses parties du monde, *Geographica*, Dept. de Geografía, CSIC, Zaragoza, 293 pp., 1961.
- Pekárová, P., Halmová, D., Bačová Mitková, V., Miklánek, P., Pekár, J., and Škoda, P.: Historic flood marks and flood frequency analysis of the Danube River at Bratislava, Slovakia, *J. Hydrol. Hydromech.*, 61, 326–333, 2013.
- Pohl, R.: Updating flood records using historic water profiles, *Proc. HydroVision 2008*, Conf. Sacramento, California, 2008.
- Popper, W.: *The Cairo Nilometer*, University of California Press, Berkeley, 1951.
- Reis, D. S. and Stedinger, J. R.: Bayesian MCMC flood frequency analysis with historical information, *J. Hydrol.*, 313, 97–116, doi:10.1016/j.jhydrol.2005.02.028, 2005.

## Quantitative historical hydrology in Europe

G. Benito et al.

Title Page

Abstract

Introduction

Conclusions

References

Tables

Figures

⏪

⏩

◀

▶

Back

Close

Full Screen / Esc

Printer-friendly Version

Interactive Discussion



Rigby, R. A. and Stasinopoulos, D. M.: Generalized additive models for location, scale and shape, *J. Roy. Stat. Soc. Ser. C-Appl. Stat.*, 54, 507–544, doi:10.1111/j.1467-9876.2005.00510.x, 2005.

Rodrigues, R., Brandão, C., and Costa, J.: As cheias no Douro ontem, hoje e amanhã, *Inst. da Água*, Lisbon, 29 pp., 2003.

Rodríguez-Marquina, F. J.: Crecidas extraordinarias del río Duero. Part 1, *Revista de Obras Públicas*, 97, 202–213, 1949a.

Rodríguez-Marquina, F. J.: Crecidas extraordinarias del río Duero. Part 2, *Revista de Obras Públicas*, 97, 370–377, 1949b.

Roggenkamp, T. and Herget, J.: Reconstructing peak discharges of historic floods of the River Ahr, Germany, *Erdkunde*, 68, 49–59, doi:10.3112/erdkunde.2014.01.05, 2014.

Salgueiro, A. R., Machado, M. J., Barriendos, M., Pereira, H. G., and Benito, G.: Flood magnitudes in the Tagus River (Iberian Peninsula) and its stochastic relationship with daily North Atlantic Oscillation since mid-19th century, *J. Hydrol.*, 502, 191–201, doi:10.1016/j.jhydrol.2013.08.008, 2013.

Sánchez, A.: Modelización hidráulica y análisis de magnitud-frecuencia de avenidas históricas en el curso bajo del Río Ebro, Master's degree thesis, University of Lleida, Lleida (Spain), 77 pp., 2007.

Sartor, J., Zimmer, K.-H., and Busch, N.: Historische Hochwasserereignisse der deutschen Mosel, *Wasser und Abfall*, 10, 46–51, 2010.

Schiller, H.: Ermittlung von Hochwasserwahrscheinlichkeiten am schiffbaren Main und überregionaler Vergleich der Ergebnisse, *Beiträge zur Hydrologie*, 56, 79–101, 1987.

Schwarzl, S.: Die Hochwasserbedrohung Wiens. Elementarereignisse an der Donau im Rahmen der Klimaentwicklung, *Wetter und Leben*, Sonderheft 4, Österreichische Gesellschaft für Meteorologie, Wien, 1956.

Sheffer, N. A., Enzel, Y., Benito, G., Grodek, T., Poart, N., Lang, M., Naulet, R., and Coeur, D.: Paleofloods and historical floods of the Ardeche River, France, *Water Resour. Res.*, 39, 1376, doi:10.1029/2003wr002468, 2003.

Sheffer, N. A., Rico, M., Enzel, Y., Benito, G., and Grodek, T.: The Palaeoflood record of the Gardon River, France: a comparison with the extreme 2002 flood event, *Geomorphology*, 98, 71–83, doi:10.1016/j.geomorph.2007.02.034, 2008.

Stedinger, J. R. and Cohn, T. A.: Flood frequency analysis with historical and paleoflood information, *Water Resour. Res.*, 22, 785–793, doi:10.1029/WR022i005p00785, 1986.

## Quantitative historical hydrology in Europe

G. Benito et al.

[Title Page](#)

[Abstract](#)

[Introduction](#)

[Conclusions](#)

[References](#)

[Tables](#)

[Figures](#)

[⏪](#)

[⏩](#)

[◀](#)

[▶](#)

[Back](#)

[Close](#)

[Full Screen / Esc](#)

[Printer-friendly Version](#)

[Interactive Discussion](#)



Stedinger, J. R., Vogel, R. M., and Foufoula-Georgiou, E.: Frequency analysis of extreme events, in: Handbook of Hydrology, edited by: Maidment, D. R., McGraw-Hill, New York, 18.1–18.66, 1993.

Strickler, A.: Beiträge zur Frage der Geschwindigkeitsformel und der Rauigkeitszahlen für Ströme, Kanäle und Geschlossene Leitungen, Mitteilungen des eidgenössischen Amtes für Wasserwirtschaft 16, Bern, Switzerland, 77 pp., 1923.

Strupczewski, W. G., Kochanek, K., and Bogdanowicz, E.: Flood frequency analysis supported by the largest historical flood, Nat. Hazards Earth Syst. Sci., 14, 1543–1551, doi:10.5194/nhess-14-1543-2014, 2014.

Sturm, K., Glaser, R., Jacobeit, J., Deutsch, M., Brázdil, R., Pfister, C., Luterbacher, J., and Wanner, H.: Hochwasser in Mitteleuropa seit 1500 und ihre Beziehung zur atmosphärischen Zirkulation, Petermann. Geogr. Mitt., 145, 14–23, 2001.

Sudhaus, D., Seidel, J., Bürger, K., Dostal, P., Imbery, F., Mayer, H., Glaser, R., and Konold, W.: Discharges of past flood events based on historical river profiles, Hydrol. Earth Syst. Sci., 12, 1201–1209, doi:10.5194/hess-12-1201-2008, 2008.

Swain, R. E., England Jr., J. F., Bullard, K. L., and Raff, D. A.: Guidelines for Evaluating Hydrologic Hazards, Bureau of Reclamation, Denver, CO, 83 pp., 2006.

Thorndycraft, V. R., Benito, G., Rico, M., Sopena, A., Sanchez-Moya, Y., and Casas, A.: A long-term flood discharge record derived from slackwater flood deposits of the Llobregat River, NE Spain, J. Hydrol., 313, 16–31, doi:10.1016/j.jhydrol.2005.02.003, 2005.

Thorndycraft, V. R., Barriandos, M., Benito, G., Rico, M., and Casas, A.: The catastrophic floods of AD 1617 in Catalonia (northeast Spain) and their climatic context, Hydrolog. Sci. J., 51, 899–912, doi:10.1623/hysj.51.5.899, 2006.

Toonen, W. H. J.: A Holocene flood record of the Lower Rhine, PhD thesis, Utrecht Studies in Earth Sciences 41, Utrecht University, Utrecht, 2013.

Viglione, A., Merz, R., Salinas, J. L., and Blöschl, G.: Flood frequency hydrology: 3. A Bayesian analysis, Water Resour. Res., 49, 675–692, doi:10.1029/2011wr010782, 2013.

Villarini, G., Smith, J. A., Serinaldi, F., Bales, J., Bates, P. D., and Krajewski, W. F.: Flood frequency analysis for nonstationary annual peak records in an urban drainage basin, Adv. Water Resour., 32, 1255–1266, doi:10.1016/j.advwatres.2009.05.003, 2009.

Villarini, G., James, A. S., and Napolitano, F.: Nonstationary modeling of a long record of rainfall and temperature over Rome, Adv. Water Res., 33, 1256–1267, doi:10.1016/j.advwatres.2010.03.013, 2010.

## Quantitative historical hydrology in Europe

G. Benito et al.

Title Page

Abstract

Introduction

Conclusions

References

Tables

Figures



Back

Close

Full Screen / Esc

Printer-friendly Version

Interactive Discussion



- Visentini, M.: Ecroulement d'un barrage sur l'Orba, en Italie, le 13 août 1935, *Rev. Géogr. Alpine*, 24, 381–393, 1936.
- Visentini, M.: Le variazioni di regime del Po come indice di variazioni del clima, *Institute of Geography, University of Bologna, Bologna*, 1938.
- 5 Visentini, M. and Pardé, M.: Quelques données sur le régime du Pô, *Ann. Géogr.*, 255, 257–275, 1936.
- Watershed, R. M.: Peak discharge of the December 2003 Rhône flood at Beaucaire, Final Report, 16, Préfet of the Rhône Mediterranean Watershed. Ministry for Ecology and Sustainable Development, Lyon, 2005.
- 10 Werritty, A. and McEwen, L. J.: The “Muckle Spate of 1829”: a reconstruction of a catastrophic flood on the River Findhorn, Scottish Highlands, in: *Palaeofloods, Historical Data & Climatic Variability: Applications in Flood Risk Assessment*, edited by: Thorndycraft, V. R., Benito, G., Llasat, C., and Barriendos, M., CSIC-CCMA, Madrid, 363–368, 2003.
- Wetter, O., Pfister, C., Weingartner, R., Luterbacher, J., Reist, T., and Troesch, J.: The largest floods in the High Rhine basin since 1268 assessed from documentary and instrumental evidence, *Hydrolog. Sci. J.*, 56, 733–758, doi:10.1080/02626667.2011.583613, 2011.
- 15 Wilhelm, B., Arnaud, F., Sabatier, P., Crouzet, C., Brisset, E., Chaumillon, E., Disnar, J.-R., Guiter, F., Malet, E., Reyss, J.-L., Tachikawa, K., Bard, E., and Delannoy, J.-J.: 1400-years of extreme precipitation patterns over the Mediterranean French Alps and possible forcing mechanisms, *Quaternary Res.*, 78, 1–12, doi:10.1016/j.yqres.2012.03.003, 2012.
- 20 Williams, G. P.: Manning formula – misnomer?, *J. Hydraul. Dev.-ASCE*, 96, 193–200, 1970.
- Woltman, R.: Theorie und Gebrauch des Hydrometrischen Flügels oder eine zuverlässige Methode die Geschwindigkeit der Winde und strömenden Gewässer zu beobachten, Benjamin Gottlob Hoffman, Hamburg, 1790.
- 25 Wundt, W.: Die größten Abflussspenden in Abhängigkeit von der Fläche, *Wasserwirtschaft*, 40, 59–64, 1949.
- Zanchettin, D., Traverso, P., and Tomasino, M.: Po River discharges: a preliminary analysis of a 200-year time series, *Climatic Change*, 89, 411–433, doi:10.1007/s10584-008-9395-z, 2008.

Quantitative  
historical hydrology  
in Europe

G. Benito et al.

**Table 1.** Summary of historical-discharge estimates for selected rivers in Europe. Only sites with multiple historical flood records in the recent literature are included. Additional discharge data of individual pre-instrumental floods can be found in Pardé (1961) and Francou and Rodier (1967). Legend: 1: Main documentary data source: EPM – epigraphic marks; O – observed flood levels; AD – archival descriptions; PFD – palaeoflood deposits, FC – flood categories. 2: Discharge estimate method: RC – from rating curve; GM – Gauckler–Manning equation; CEQ – Chézy equation; SBW – step-backwater method; CD – critical depth; 2D-M – Bidimensional model; WLT – Water level transposition from nearby gauge station; RRM – rainfall-runoff model; STA – statistical method.

Site No.	River/ Stream	Site	Area km <sup>2</sup>	Gauge record starts, year	Largest gauged flood discharge, m <sup>3</sup> s <sup>-1</sup> /date	Historical record starts, year	No. of historical flood	Year of the largest historical flood	Largest discharge of historical flood, m <sup>3</sup> s <sup>-1</sup>	Data Source <sup>1</sup> Model <sup>2</sup>	References
Portugal											
1	Duero	Regua	91 491	1930	15 700 2 Jan 1962	1725	12	1739	18 000	RC AD	Rodrigues et al. (2003)
Spain											
2	Duero	Toro	41 808	1911	2520 7 Mar 2001	1860	8	1860	2955	RC EPM	Rodríguez-Marquina (1949a, b)
3	Tagus	Aranjuez,	9340	1913	930 8 Mar 1947	1557	59	1878	1200	SBW AD	Benito et al. (2003a) Machado et al. (2015) Benito et al. (2003a)
4		Toledo	24 788	1972	2900 8 Mar 1947	1113	32	1168	3600	SBW AD	Benito et al. (2003a)
5		Talavera	33 849	1911	3700 8 Mar 1947	1203	11	1674	3300–3800	SBWAD	Benito et al. (2003a)
6		Alcantara	51 958	1913	8115 7 Feb 1979	1856	5	1876	14 800	SBWEPM	Benito et al. (2003a, b)
7	Guadalentin	Valdeinfierno	372	1933	178 18 Jun 1941	1568	22	1973	1616	SBW AD	Benito et al. (2010); Machado et al. (2011)
8		Puentes	1428	1929	2100 19 Oct 1973	1500	41	1891	1890	RC AD	Benito et al. (2010); Machado et al. (2011)
9	Llobregat	Monistrol, Pont de Vilomara	1845 3370	1911	1650 20 Sep 1971	1315	77	1617	3700–4300 4860	SBWPFCD AD	Thorndycraft et al. (2005)
10	Ter	Girona	1802	1912	2300 2350 18 Oct 1940	1322	96	1617	2700–4500	SWBAD	Thorndycraft et al. (2006)
11	Ondara	Tàrrega	150	–	280 1930	1615	7	1644	1600	SWBO, AD	Balasz et al. (2011)
12	Ebro	Zaragoza	40 400	1946	4150 3 Jan 1961	1943	9	1643	5560	SWB AD	Monserate (2013)
13	Ebro	Tortosa	84 200	1952	4580 5 Jan 1961	1617	8	1787	12 900	SWBAD	Sánchez (2007)

Title Page

Abstract

Introduction

Conclusions

References

Tables

Figures

◀

▶

◀

▶

Back

Close

Full Screen / Esc

Printer-friendly Version

Interactive Discussion

## Quantitative historical hydrology in Europe

G. Benito et al.

Title Page

Abstract

Introduction

Conclusions

References

Tables

Figures



Back

Close

Full Screen / Esc

Printer-friendly Version

Interactive Discussion



Table 1. Continued.

Site No.	River/ Stream	Site	Area km <sup>2</sup>	Gauge record starts, year	Largest gauged flood discharge, m <sup>3</sup> s <sup>-1</sup> /date	Historical record starts, year	No. of historical flood	Year of the largest historical flood	Largest discharge of historical flood, m <sup>3</sup> s <sup>-1</sup>	Data Source <sup>1</sup> Model <sup>2</sup>	References
France											
14	Garonne	Toulouse-Portet-sur-Garonne	9989	1910	4300 3 Feb 1952	1727	4	1875	8000	RC EPMAD	Pardé (1953); Lang and Coeur (2014)
15	Gardon	Anduze	540	1892	4575 30 Sep 1958	1741	24	1861	5600	SBWAD	Neppel et al. (2010)
16	Gardon	Baume	1855	1890	6600 9 Sep 2002	1644	6	1403	7100–8000	SBWAD	Lescure (2004); Sheffer et al. (2008)
17	Rhone	Valence	66 450	1920	6700 1 Oct 1993	1840	13	1856	8660	RC EMP	Lang and Coeur (2014); Pardé (1925b)
18	Rhone	Beaucaire	95 590	1920	11 500 3 Dec 2003	1800	27	1800	12 000– 12 500	RC EMP	Lang and Coeur (2014); Pardé (1925a); Watershed (2005)
19	Ardeche	Vallon	1930	1892	5800 28 Sep 1900	1644	12	1890	7550	SWBEPM	Sheffer et al. (2003); Naulet et al. (2005)
20	Ardeche	St Martin	2240	1892	5750 29 Sep 1900	1644	12	1890	7550	SWBEPM	Sheffer et al. (2003); Naulet et al. (2005)
21	Isère	Grenoble	5720	1960	930 1 Sep 1968	1651	18	1651	2464	RC, EPM	Pardé (1925b); Dumas (2004); Coeur (2008)
22	Dordogne	Bergerac	14 040	1898	3739 9 Dec 1944	1728	10	18 Jun 1728	4500–5000	RC EPM	Pardé (1961)
23	Loire	Tours	42 234	1995	3050 9 Dec 2003	1789	15	1856	6400	RC EPM RC EMP	Duband (1996)
Italy											
24	Ticino	Sesto Calende	6600	1918	2646 17 Oct 2000	1640	39	1868	4500–5000	RC O	De Marchi (1950); Pardé (1961); Cattaneo et al. (2000)
25	Po	Miorina Piacenza	42 030	1907	13 400 17 Oct 2000	1700	14	1872	8600	RC O	Zanchettin et al. (2008)
26	Po	Ponte Lagoscuro	70 090	1918	10 300 15 Nov 1951	1807	11	1872	7930	RC O	HOPR (1935); Giovannelli and Allodi (1960); Zanchettin et al. (2008)
27	Arno	Firenze (gauge Navi di Rosano)	4237	1867	4200 4 Nov 1966	1333	8	1844	~4200	RC O	Bendini (1969); Caporali et al. (2005)
28	Serchio	Ponte di S. Quirico	1430	1923	2000 9 Nov 1982	1419	21	1836	2200	RC O	Natali (1994)
29	Tiber	Rome	16 000	1920	2802 17 Dec 1937	1422	18	1598	4070	2D-M GM EPM	Calenda et al. (2005)
Switzerland											
30	Rhine	Basel	36 000	1808	5700 13 Jun 1876	1268	49	1480	~6400	SBWAD,O	Wetter et al. (2011)
The Netherlands											
31	Rhine	Lobith	160 000	1901	12 600 4 Jan 1926	1350	> 37	1374 1658	15 500 12 600–15 500	RC,O WLT	Toonen (2013)

## Quantitative historical hydrology in Europe

G. Benito et al.

Title Page

Abstract

Introduction

Conclusions

References

Tables

Figures

⏪

⏩

◀

▶

Back

Close

Full Screen / Esc

Printer-friendly Version

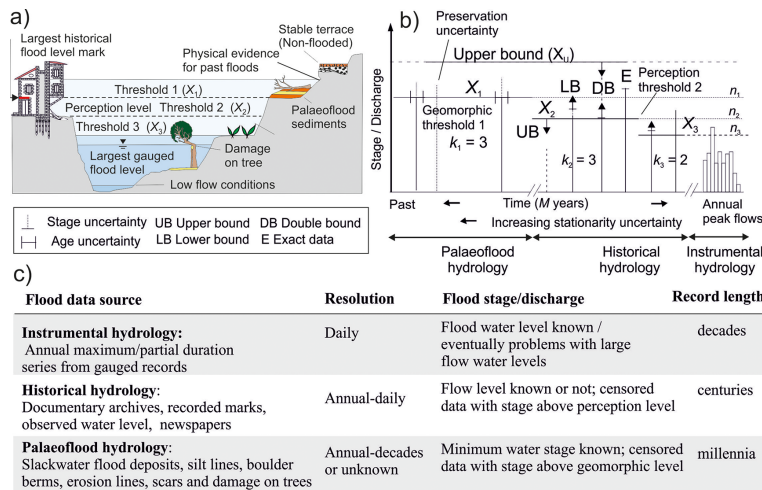
Interactive Discussion



Table 1. Continued.

Site No.	River/ Stream	Site	Area km <sup>2</sup>	Gauge record starts, year	Largest gauged flood discharge, m <sup>3</sup> s <sup>-1</sup> /date	Historical record starts, year	No. of historical flood	Year of the largest historical flood	Largest discharge of historical flood, m <sup>3</sup> s <sup>-1</sup>	Data Source <sup>1</sup> Model <sup>2</sup>	References
Germany											
32	Rhine	Cologne	144 232	1788	11 100 1 Jan 1926	800	>52	1374	23 000	GM	Herget and Meurs (2010)
33	Ahr	Ahrweiler and others	897	1930	214 23 Dec 1993	1348	>5	1804	1600	GM	Roggenkamp and Herget (2014)
34	Main	Frankfurt and others	24 764	transferred	2010 30 Jan 1995	1342	>30	1342	4300	GM	Herget et al. (2015)
35	Neckar	Stuttgart and others	3995	1881	1030 24 May 1978	1824	2	1824	2070	CEq, SBW	Bürger et al. (2006) Sudhaus et al. (2008)
36	Elbe	Dresden	53 096	1775	5700 31 Mar 1845	1501	38	1501	~5000 <sup>1</sup> – 3900	SBW2D-M EPM	Pohl (2008); Kirsch and Pohl (2011)
Czech Republic											
37	Vltava	Prague	26 720	1825	5160 14 Aug 2002	1481	150	1501	~4100	GM EPM, AD	Brázdil et al. (2005a); Elleder et al. (2013)
Austria											
38	Danube	Achleiten-Engelhartzell AT	77 089	1900	10 000 3 Jun 2013	1500		1501	12 000	GM EPM AD	Kresser (1957); Blöschl et al. (2013)
39	Danube	Kienstock AT	96 000	1893	11 300 8 Aug 2002	1500		1501	14 000	GM EPMAD	Kresser (1957); Blöschl et al. (2013)
40	Danube	Vienna-Korneuburg AT	101 731	1828	11 000 3 Jun 2013	1500		1501	14 000	GM EPM, AD	Kresser (1957); Blöschl et al. (2013)
Slovakia											
41	Danube	Bratislava SV	131 338	1876	10 870 17 Sep 1899	1500	22	1501 1682 1787	~13 470	RC EPM STA	Pekárová et al. (2013)
United Kingdom											
42	Trent	Nottingham	7486	1884	1107 19 Mar 1947	1329	29	1795	1415	RC EPM	Macdonald (2013)
43	Ouse	York	3315	1877	609 5 Jan 1982	1263	31	1263	626	RC EPM	Macdonald et al. (2003); Macdonald and Black (2010)
44	Tay	Perth	4690	1815	2268 17 Jan 1993	1210	31	1814	2643	RC EPM	Macdonald et al. (2006)
45	Findhorn	Scotland	782	–	2406 16 Aug 1970	1829	1	1829	1484	GM	Werritty and McEwen (2003)
Norway											
46	Vinstra	Losna	5630	1895	2700 1 Sep 1938	1789	3	1789	5500	RRM	Middtømme and Tingvold (2002)





**Figure 1.** Sources of quantitative flood information. **(a)** Sketch of a cross section showing various flood level indicators from palaeofloods (sediments and damage on trees), and documentary-based floods (i.e. those able to cause damage or socio-economic disruption). For historical hydrology, only floods exceeding a flood level related to a perception threshold ( $X_i$ ) over a period of  $n_i$  years ( $n_1 > n_2 > n_3$ ) are recorded. Palaeofloods from stratigraphic records are related to geomorphic thresholds. **(b)** Organization of historical and paleoflood data, using the described thresholds ( $X_i$ ), and multiple types of observations to support flood frequency analysis.  $k_i$  corresponds to the number of flood peaks during the last  $n_i$  years that exceeded the  $X_i$  threshold but not the  $X_{i-1}$  threshold. Upper bound stage level ( $X_u$ ) may be used to limit the maximum discharge. Data types: E: flood peak is known. LB: flood was bigger than  $X_i$  which is known; UB: the upper flood level of known magnitude ( $X_u$ ) was not exceeded over a certain time period. DB: flood level was within the interval given by  $X_u$  and  $X_i$ . **(c)** Data source characteristics, timing, stage information, and typical temporal framework of systematic (instrumental) and non-systematic data (palaeoflood and documentary evidence). Modified after Benito and O'Connor (2013).



**Figure 2.** Stream flow measurements at the gauge station “Borgo a Mozzano” ( $43^{\circ}59'30.73''$  N;  $10^{\circ}33'10.04''$  E) in the River Serchio (Italy), probably taken in the 1920s or 1930s. The observer is placed in a box suspended on cable that moved along the cross section from which manages an old device to measure the stream flow velocity (Photo courtesy of Regione Toscana – Genio Civile di Bacino Toscana Nord e Servizio Idrologico Regionale).

## Quantitative historical hydrology in Europe

G. Benito et al.

Title Page

Abstract

Introduction

Conclusions

References

Tables

Figures

◀

▶

◀

▶

Back

Close

Full Screen / Esc

Printer-friendly Version

Interactive Discussion





Height m	Date	Discharge $\text{m}^3\text{s}^{-1}$
7.58	June 1856	6400
7.17	Oct. 1846	6000
6.60	Nov. 1789	
6.58	Sep. 1866	5300
6.20	Dec. 1825	
5.69	Oct. 1872	
5.61	Oct. 1907	4200
5.47	June 1835	
5.07	Jan. 1823	
3.82	Jan. 1982	
3.40	Dec. 2003	3050

**Figure 3.** Historical flood marks of the River Loire in the Wilson Bridge in Tours (France). The elevations of the flood marks after the Direction regionale de l'environnement de l'Aménagement et du logement (DREAL), Centre-Val de Loire (<http://www.centre.developpement-durable.gouv.fr>). Discharge values associated to the flood levels after Duband (1996).

## Quantitative historical hydrology in Europe

G. Benito et al.

Title Page

Abstract

Introduction

Conclusions

References

Tables

Figures



Back

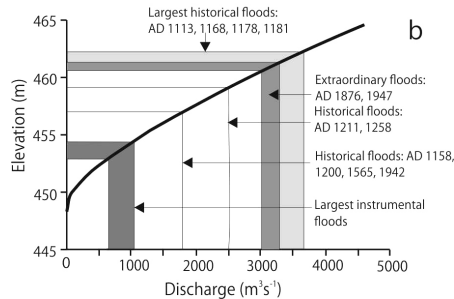
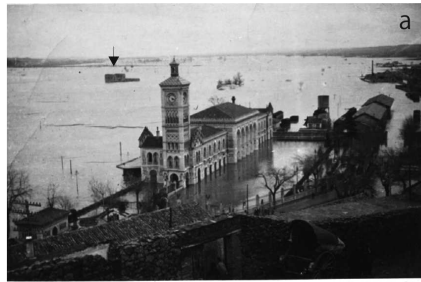
Close

Full Screen / Esc

Printer-friendly Version

Interactive Discussion





**Figure 4.** (a) Upstream view of the River Tagus into the Huerta del Rey (King's Garden) during flooding on 6 March 1947 at Toledo (Spain). The peak discharge was reached at 10 a.m. and the picture was taken at 3.20 p.m. (by courtesy of Mariano García Bargaño). The water level at peak discharge was ca. 1.5 m above the railway station ground level (main building at the centre of the photo). In the background the arrow points the Galiana Palace, on the left bank of the Tagus River, just over 1 km from the old part of Toledo (Galina Palace was built at the site of an earlier summer villa and Arab garden of Al-Mamun, king of the Taifa of Toledo in AD 1043–1075) (Benito et al., 2003a). (b) Rating curve of a cross-section next to the upper picture obtained from step-back water calculations (HEC-RAS model) with the elevation of relevant historical flood evidences (flood marks and description of inundated sites). The largest historical floods occurred during the Medieval Climatic Anomaly and are followed by the 1876 and 1947 floods (Fernandez de Villalta et al., 2001).

Title Page

Abstract

Introduction

Conclusions

References

Tables

Figures



Back

Close

Full Screen / Esc

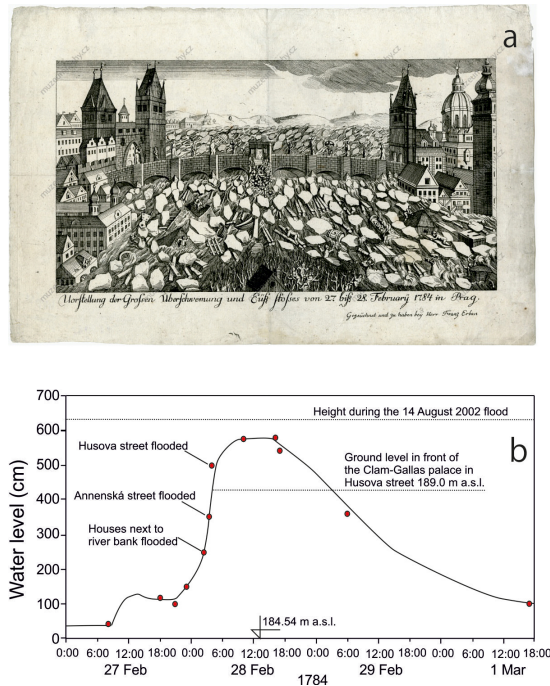
Printer-friendly Version

Interactive Discussion



Quantitative  
historical hydrology  
in Europe

G. Benito et al.



**Figure 5.** (a) Pictorial representation of the River Vltava during the February 1784 flood, showing ice floes and woody debris accumulated at the Charles Bridge in Prague (copperplate by F. Erban, Museum of the City of Prague, catalogue no. 125.387). The ice jams at the bridge caused flooding upstream resulting to the highest known water marks until the August 2002 flood (Brázdil et al., 2005a). (b) A flood hydrograph of the Vltava River in Prague at the Monastery of the Knights of Cross reconstructed from documentary data for 27 February–1 March 1784 with an estimated discharge rate of  $4560 \text{ m}^3 \text{ s}^{-1}$  (Brázdil et al., 2005a).



**Figure 6.** Stone brick with an inscription of the 1906-flood mark of the River Rhine in Koblenz. The block was originally placed on a railway bridge destroyed during World War II and later used for reconstruction of this building (Herget, 2012). This confirms the necessity to work only with original position of flood marks and use multiple documentary evidences to reconstruct flood levels.

## HESSD

12, 4413–4469, 2015

### Quantitative historical hydrology in Europe

G. Benito et al.

Title Page

Abstract

Introduction

Conclusions

References

Tables

Figures

◀

▶

◀

▶

Back

Close

Full Screen / Esc

Printer-friendly Version

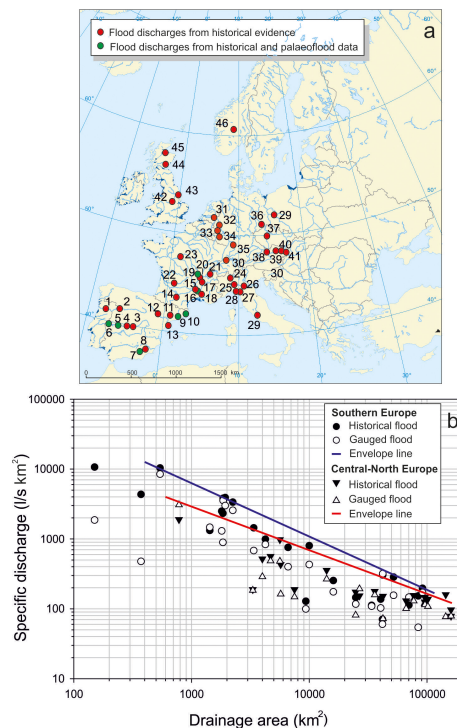
Interactive Discussion





## Quantitative historical hydrology in Europe

G. Benito et al.



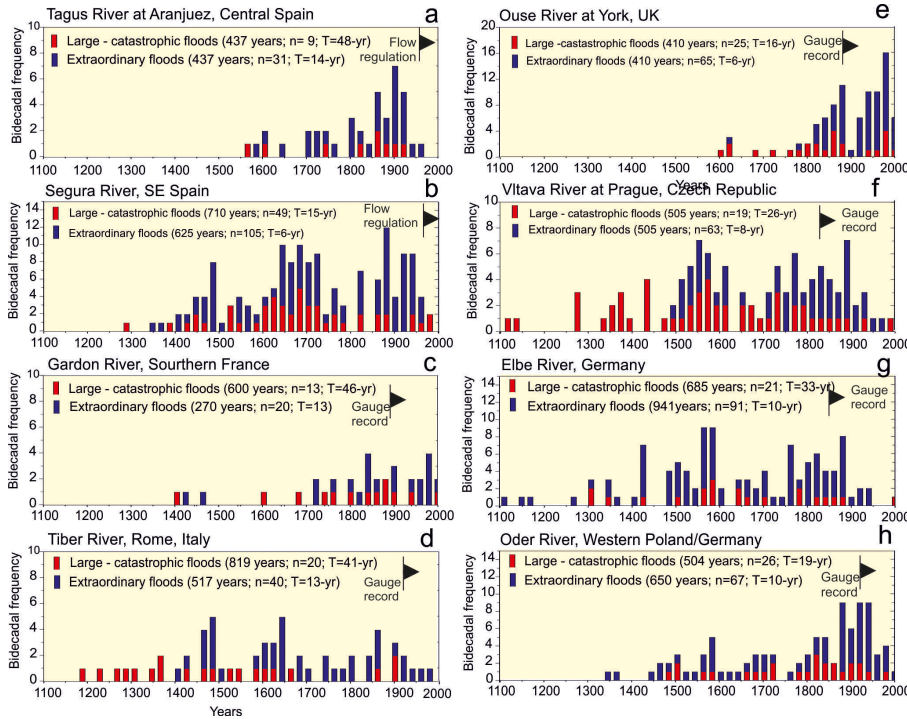
**Figure 7. (a)** Major rivers and streams of Europe and studied sites with multiple historical flood discharge estimates. Numbers refers to places cited in Table 1. **(b)** Maximum specific discharge ( $\text{L s}^{-1} \text{ km}^{-2}$ ) of the largest historical and instrumental floods recorded in the sites referred in Table 1. Southern Europe includes sites from Portugal, Spain, Italy and France (except the Dordogne, Isère, Loire, Rhone and Garonne rivers) and Central-North Europe the rest of rivers. Lines are envelope boundaries of the largest specific discharges for these two data sets. Most of the historical specific discharges are above the instrumental ones, except some rivers in Central-North Europe.

[Title Page](#)
[Abstract](#)
[Introduction](#)
[Conclusions](#)
[References](#)
[Tables](#)
[Figures](#)
[⏪](#)
[⏩](#)
[⏴](#)
[⏵](#)
[Back](#)
[Close](#)
[Full Screen / Esc](#)
[Printer-friendly Version](#)
[Interactive Discussion](#)




## Quantitative historical hydrology in Europe

G. Benito et al.



[Title Page](#)

[Abstract](#) [Introduction](#)

[Conclusions](#) [References](#)

[Tables](#) [Figures](#)

[◀](#) [▶](#)

[◀](#) [▶](#)

[Back](#) [Close](#)

[Full Screen / Esc](#)

[Printer-friendly Version](#)

[Interactive Discussion](#)



## Quantitative historical hydrology in Europe

G. Benito et al.

**Figure 8.** Bi-decadal (20 yr) flood frequency based on documentary and instrumental records in the selected European rivers (floods exceeding a particular discharge threshold or height). Two flood categories were differentiated: catastrophic floods (CAT) associated with high flood discharge or severe damages, and extraordinary floods (EXT) causing inundation of the floodplain with moderate-to-minor damages. The length of record in years, number of recorded floods ( $n$ ), and the mean occurrence interval ( $T$  in years) for each category and river are indicated. **(a)** The River Tagus in Aranjuez, documentary and instrumental data, CAT:  $> 400 \text{ m}^3 \text{ s}^{-1}$ , EXT:  $100\text{--}400 \text{ m}^3 \text{ s}^{-1}$  (Benito et al., 2003a; Machado et al., 2015). **(b)** Segura-Guadalentín rivers at Murcia (Barriendos and Rodrigo, 2006; Machado et al., 2011). **(c)** The River Gardon, documentary data since the 15th century, historical and daily water-level readings at Anduze (1741–2005; Neppel et al., 2010), CAT:  $> 3000 \text{ m}^3 \text{ s}^{-1}$ ; EXT:  $1000\text{--}3000 \text{ m}^3 \text{ s}^{-1}$ ; complemented with discharges from palaeofloods at La Baume (Sheffer et al., 2008). **(d)** The River Tiber in Rome, observed historical levels since the 12th century, continuous water-level readings since 1870 at the Ripetta Landing (Calenda et al., 2005), CAT:  $> 2900 \text{ m}^3 \text{ s}^{-1}$  (flood level  $> 17 \text{ m}$  at Ripetta), EXT:  $2300\text{--}2900 \text{ m}^3 \text{ s}^{-1}$ . **(e)** The River Ouse, documentary and instrumental data (Macdonald and Black, 2010), CAT:  $> 500 \text{ m}^3 \text{ s}^{-1}$ , EXT:  $350\text{--}500 \text{ m}^3 \text{ s}^{-1}$ . **(f)** The River Vltava in Prague, documentary and instrumental data (Brázdil et al., 2005a), CAT:  $Q > 2900 \text{ m}^3 \text{ s}^{-1}$  or a flood index 2 and 3, EXT:  $2000\text{--}2900 \text{ m}^3 \text{ s}^{-1}$  or flood index 1. **(g)** The Elbe River, documentary and instrumental data (Mudelsee et al., 2003); classes refer to Mudelsee et al. (2003) strong (EXT) and exceptionally strong (CAT) flooding. **(h)** The Oder River, documentary and instrumental data (Mudelsee et al., 2003). Data before AD 1500 are incomplete due to lack of documentary evidence. Modified from IPCC (2013).

[Title Page](#)

[Abstract](#)

[Introduction](#)

[Conclusions](#)

[References](#)

[Tables](#)

[Figures](#)

[⏪](#)

[⏩](#)

[◀](#)

[▶](#)

[Back](#)

[Close](#)

[Full Screen / Esc](#)

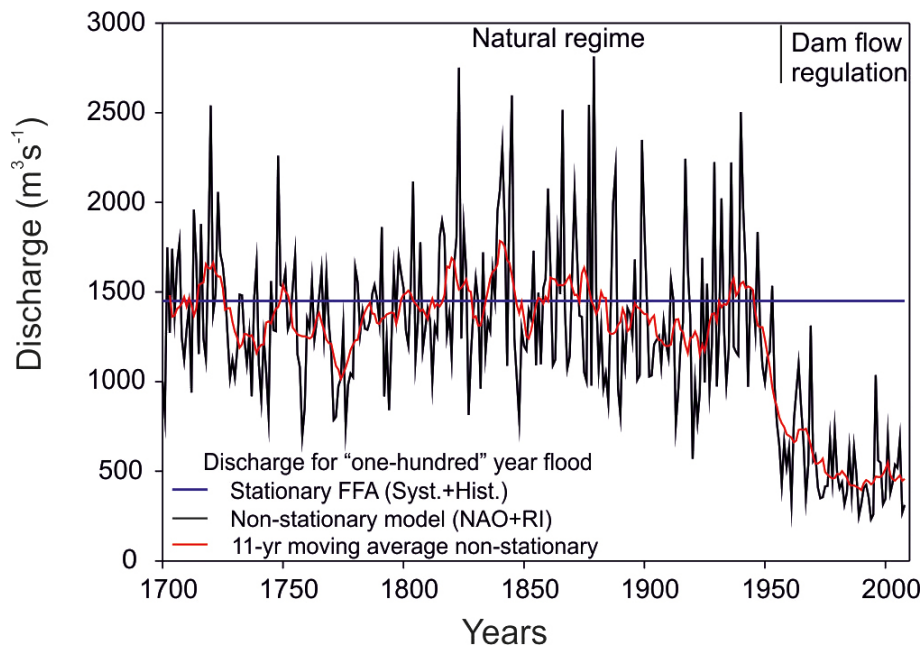
[Printer-friendly Version](#)

[Interactive Discussion](#)



**Quantitative  
historical hydrology  
in Europe**

G. Benito et al.



**Figure 9.** Non-stationary model of the “one-hundred year” flood over the last 300 years based on the dependence of the distribution parameters with the associated external covariates (winter NAO index and Reservoir index). The horizontal line represents the 100 yr flood from a log-normal distribution using documentary and instrumental records under a stationarity assumption (after Machado et al., 2015).

[Title Page](#)[Abstract](#)[Introduction](#)[Conclusions](#)[References](#)[Tables](#)[Figures](#)[⏪](#)[⏩](#)[◀](#)[▶](#)[Back](#)[Close](#)[Full Screen / Esc](#)[Printer-friendly Version](#)[Interactive Discussion](#)