

1 Testing alternative uses of electromagnetic data to reduce 2 the prediction error of groundwater models

3 N. K. Christensen¹, S. Christensen¹, and T.P.A Ferre²

4 [1]{Department of Geoscience, Aarhus University, Aarhus,Denmark}

5 [2]{Department of Hydrology and Water Resources, University of Arizona, Tucson, USA.}

6 Correspondence to: N. K. Christensen (phda.nikolaj.kruse@geo.au.dk)

7

8 **Abstract**

9 Despite that geophysics is being used increasingly, it is often unclear how and when the integration
10 of geophysical data and models can best improve the construction and predictive capability of
11 groundwater models. This paper uses a newly developed **HY**drogeophysical **TEst-Bench** (HYTEB)
12 – which is a collection of geological, groundwater and geophysical modeling and inversion software
13 – to demonstrate alternative uses of electromagnetic (EM) data for groundwater modeling in a
14 hydrogeological environment consisting of various types of glacial deposits with typical hydraulic
15 conductivities and electrical resistivities covering impermeable bedrock with low resistivity (clay).
16 The synthetic three dimensional reference system is designed so there is a perfect relationship
17 between hydraulic conductivity and electrical resistivity. For this system it is investigated to what
18 extent groundwater model calibration and, often more importantly, model predictions can be
19 improved by including in the calibration process electrical resistivity estimates obtained from TEM
20 data. In all calibration cases, the hydraulic conductivity field is highly parameterized and the
21 estimation is stabilized by (in most cases) geophysics-based regularization.

22 For the studied system and inversion approaches it is found that that resistivities estimated by
23 sequential hydrogeophysical inversion (SHI) or joint hydrogeophysical inversion (JHI) should be
24 used with caution as estimators of hydraulic conductivity or as regularization means for subsequent
25 hydrological inversion. The limited groundwater model improvement obtained by using the
26 geophysical data probably mainly arises from the way these data are used here: the alternative
27 inversion approaches propagate geophysical estimation errors into the hydrologic model
28 parameters. It was expected that JHI would compensate for this, but the hydrologic data were

1 apparently insufficient to secure such compensation. With respect to reducing model prediction
2 error, it depends on the type of prediction whether it has value to include geophysics in a joint or
3 sequential hydrogeophysical model calibration. It is found that all calibrated models are good
4 predictors of hydraulic head. When the stress situation is changed from that of the hydrologic
5 calibration data, then all models make biased predictions of head change. All calibrated models turn
6 out to be a very poor predictor of the pumping well's recharge area and groundwater age. The
7 reason for this is that distributed recharge is parameterized as depending on estimated hydraulic
8 conductivity of the upper model layer which tends to be underestimated. Another important insight
9 from our analysis is thus that either recharge should be parameterized and estimated in a different
10 way, or other types of data should be added to better constrain the recharge estimates.

11

12 **1 Introduction**

13 **1.1 Using hydrologic models for decision support**

14 Groundwater models are commonly constructed to support decision-makers in managing
15 groundwater resources. The model can, for example, be used to predict the impact of changes in
16 groundwater pumping on hydraulic head and wellhead protection areas or to predict the fate and
17 transport of groundwater pollution. In general terms, process models are used to base predictions of
18 interest on all of the knowledge that we have about the physical/chemical system and the driving
19 key processes. In this paper we will focus on 3D models typically used for decision support on large
20 spatial scale (from tens to thousands of square-kilometers) with a heterogeneous and possibly
21 complex geology. Deterministic groundwater modelling is generally used in such cases because the
22 model simulation time is too long to make it feasible to use stochastic modeling. We will therefore
23 mainly focus on deterministic groundwater modeling in the following.

24 A deterministic groundwater model is based on a conceptual model that encapsulates prior
25 knowledge of important physical and chemical conditions and processes of the complex real world
26 system. The conceptual model is translated into a numerical groundwater model whereby its
27 reasonableness can be tested by comparing forward simulations with field observations. If the
28 conceptual model appears reasonable, the groundwater model is calibrated by adjusting model
29 parameters until simulated values fit corresponding field observations sufficiently well. The

1 calibrated model is subsequently used to make predictions (Reilly 2001; Reilly and Harbaugh
2 2004). However, the prediction will be uncertain for various reasons of which we will emphasize
3 three. (i) Model calibration is done by fitting uncertain data. The calibrated parameters will
4 therefore also be uncertain and this uncertainty is propagated to the model predictions (Hill 1998;
5 Moore and Doherty 2006; Tonkin et al. 2007). A model's predictive uncertainty will only be
6 reduced by calibration if the information content of the calibration dataset constrains the parameter
7 values that significantly influence the prediction (Harvey and Gorelick 1995; Feyen et al. 2003;
8 Franssen et al. 2003). Thus this source of uncertainty can only be reduced by collecting more or
9 more accurate data of type(s) and location(s) that constrain parameter values important to the
10 prediction. The data will typically be hydrologic or hydraulic, but it can also be geophysical. (ii)
11 Because of scarcity and lack of sensitivity of data, there will always be small scale heterogeneity
12 that cannot be resolved. A groundwater model will therefore always contain small scale structural
13 errors, which may not cause bias in predictions but may still cause large prediction uncertainty
14 (Cooley 2004; Cooley and Christensen 2006; Refsgaard et al. 2012). (iii) A model is also prone to
15 possess large-scale structural errors that can cause significant bias and uncertainty of estimated
16 parameters and simulated predictions (Doherty and Welter 2010; Doherty and Christensen 2011;
17 Refsgaard et al. 2012). This bias and uncertainty can be reduced by collecting data that resolve the
18 large-scale structures of the studied hydrogeological system, which can then be accurately
19 represented in the model. This can, for example, be spatially dense geophysical data sets.

20 Model errors will lead to errors and uncertainties in predictions of interest. One of the key
21 questions to address in creating models for decision support is: which additional data are most
22 likely to improve key predictions? The types of data available for use in hydrologic analysis are
23 increasingly diverse, including physical, chemical, isotopic, and geophysical data. In light of this
24 complexity, it can be very difficult to compare the likely contributions of diverse data to model-
25 based decision support.

26

27 **1.2 Informing hydrologic models with geophysics**

28 Over the last three decades, noninvasive geophysical methods have been used increasingly to
29 construct groundwater models (Hubbard and Rubin 2000; Vereecken et al. 2004). This is
30 particularly true for data collected by Airborne Electromagnetic Methods (AEM) because they can
31 be collected quickly, densely, and at a relatively low cost for the very large spatial coverage (Steuer

1 et al. 2008; Viezzoli et al. 2010b; Abraham et al. 2012; Sánchez et al. 2012; Refsgaard et al. 2014;
2 Munday et al. 2015). Large-scale AEM (or ground-based EM) investigations have been used to
3 delineate aquifers, aquitards, and buried valleys or other structures containing aquifers (Auken et al.
4 2003; Sandersen and Jørgensen 2003; Jørgensen et al. 2003; Abraham et al. 2012; Oldenborger et
5 al. 2013), to assess aquifer vulnerability (Refsgaard et al. 2014; Foged et al. 2014a), to map
6 saltwater intrusion (Fitterman and Deszcz-Pan 1998; Viezzoli et al. 2010b; Lawrie et al. 2012;
7 Herckenrath et al. 2013b), and to map freshwater resources (Steuer et al. 2008; Sánchez et al. 2012;
8 Munday et al. 2015). The main drawbacks of electromagnetic (EM) data are: 1) ambiguity in
9 relating electrical properties to hydraulic properties; and 2) reduced lateral and vertical resolution
10 with depth. The former effect can limit the quantitative use of geophysical data for parameterizing
11 groundwater models. The latter effect makes identification of deep structures difficult (Danielsen et
12 al. 2003; Auken et al. 2008), which will have different influences on predictions that are dominated
13 by shallower or deeper flow paths.

14 Geophysical data must be related to properties or states of hydrologic relevance to use them in
15 constructing hydrologic models. Whether the geophysical data are used to define hydrostratigraphic
16 units or subregions or to parameterize the model, the data are often inverted. The way in which
17 hydrologic and geophysical data are inverted and integrated can impact the extraction of
18 information from geophysical data (Dam and Christensen 2003; Day-Lewis 2005; Moysey et al.
19 2005; Linde et al. 2006; Singha and Gorelick 2006; Singha and Moysey 2006; Hinnell et al. 2010).

20 The simplest inversion approach is sequential hydrogeophysical inversion (SHI). In the first step of
21 this approach, the geophysical data are inverted independent of the hydrologic data or model. In the
22 second step, the inverted geophysical properties are used to zonate or directly parameterize the
23 hydrologic model (Hubbard et al. 1999; Dam and Christensen 2003; Seifert et al. 2007; Koch et al.
24 2009; Di Maio et al. 2013; Marker et al. 2015). This is based on the assumption that the geophysical
25 responses are sensitive to some of the same structures and property distributions that the hydrologic
26 data are sensitive to. Using the SHI approach has built-in challenges. In the first step, the
27 geophysical inversions are typically stabilized by using regularization and smoothing constraints
28 that do not reflect real physical conditions (Day-Lewis 2005; Linde et al. 2006; Singha and Gorelick
29 2006; Singha and Moysey 2006). Therefore one must be cautious when using such geophysical
30 property estimates to infer hydraulic zones or property estimates to be used in the second step of the
31 SHI (Day-Lewis 2005; Slater 2007; Hinnell et al. 2010). Furthermore, with the SHI approach used

1 in the following the geophysical models cannot be easily updated to conform to the hydrologic
2 observations. Such updating is allowed by the SHI approach of Dam and Christensen (2003).

3 Two inversion alternatives to SHI are coupled hydrogeophysical inversion (CHI) and joint
4 hydrogeophysical inversion (JHI) (Hinnell et al. 2010). For both alternatives, the hydrologic and
5 geophysical data sets are inverted simultaneously. In CHI, the simulated response of one model
6 (e.g. the hydrologic model) is used as input to constrain the other model (e.g. the geophysical
7 model). (For example, during the inversion a water table simulated by the hydrologic model is used
8 to constrain the depth of a layer boundary of the estimated geophysical model.) CHI has been
9 applied successfully for reducing parameter uncertainty by using ground penetrating radar and
10 electrical resistivity tomography data in hydraulic models (Kowalsky et al. 2005; Hinnell et al.
11 2010). In JHI, the hydrologic and geophysical models are coupled directly through some of their
12 parameters using assumed relationships among the geophysical and/or hydrologic parameters
13 (Hyndman et al. 1994). For EM data, JHI is typically done using a relationship between hydraulic
14 conductivity and electrical resistivity inspired by Archie's law (Archie 1942; Revil and Cathles
15 1999; Purvance and Andricevic 2000; Slater 2007).

16 Applications of sequential and joint version of hydrologic and geophysical data using a
17 petrophysical relationships in groundwater modeling have been demonstrated by Herckenrath et al.
18 (2013a) and Vilhelmsen et al. (2014). Herckenrath et al. (2013a) were comparing a SHI with JHI
19 for a large-scale groundwater model using ground-based EM data. Vilhelmsen et al. (2014) were
20 demonstrating a method for joint inversion of aquifer test data, magnetic resonance sounding data,
21 and ground-based electromagnetic data. For synthetic benchmarking, both of these studies were
22 using a simple model with few layers with constant parameter values, and they were evaluating the
23 model performance by the means of improved model parameter values and reduction of parameter
24 uncertainty. However, as concluded by e.g. Zhou et al. (2014) the goal of groundwater model
25 calibration is not just parameter identification, but also to increase the model's prediction capability.

26 Petrophysical relationships between hydraulic conductivity and electrical resistivity are difficult to
27 establish, because such translation tend to be site, scale and facies specific (Hyndman and Tronicke
28 2005; Slater 2007). Therefore methods have been developed that do not rely on a petrophysical
29 relationship between a property of the geophysical model and the property of the hydrological
30 model. For example, Marker et al. (2015) developed a deterministic SHI approach where spatially
31 dense AEM data is first inverted; then combined with scarce lithological data from boreholes to

1 form a clay fraction model for the sediments of the subsurface (Foged et al. 2014b); subsequently
2 cluster analysis of electrical resistivity and clay-fraction values is used to generate one or more
3 structural model realizations for the subsurface (Foged et al. 2014a); finally the structural model(s)
4 are used in the groundwater model that is calibrated against hydrological data. He et al. (2014,2015)
5 developed a similar methodology where the transition probability method is used to generate the
6 structural model realizations from borehole data and AEM estimated resistivities. The
7 methodologies of Marker et al. (2015) and He et al. (2015) were both used by them on large spatial
8 scale. However, the number of calibrated parameters was kept small by assuming hydraulic
9 conductivity to be constant within an entire deposit or structure. The methodologies are thus
10 stochastic in term of generating structure but deterministic in term of representing and estimating
11 property fields.

12 Full stochastic approaches have been developed. For example, Ruggeri et al. (2013) developed a
13 Bayesian simulation approach to estimate the hydraulic conductivity field from measurements of
14 geophysical parameters. So far the method has only been used for estimation along short profile
15 lines (Ruggeri et al. 2013, 2014), and the Bayesian scheme has not yet been extended to also
16 involve hydrological data and groundwater modeling. (Such extension will probably turn out to be
17 yet computationally infeasible.) Furthermore, the methodology of Ruggeri et al. (2013) requires
18 existence of a petrophysical relationship between electrical resistivity and hydraulic conductivity;
19 the relationship does not need to be known in which case a data set of collocated measurements of
20 electrical resistivity and hydraulic conductivity are required. Such a data set is rare for
21 investigations of the systems and scale considered here. Stochastic inversion approaches have been
22 developed that invert electrical resistivity (ER) and hydrological data. Irving and Singha (2010),
23 for example, describe a Markov-chain-Monte-Carlo (MCMC) method to estimate a binary hydraulic
24 conductivity field from ER and tracer test data. So far this MCMC method seems to be applicable
25 only for small domains and very few unknown parameters (Irving and Singha, 2010).

26 In the following we therefore keep focus on use of geophysics in connection with deterministic
27 groundwater modeling. We particularly focus on application and comparison of SHI and JHI when
28 used in connection with groundwater investigation of large domains with three-dimensional
29 heterogeneous hydrogeological and geophysical systems.

30

1

2 **1.3 Testing the worth of using geophysics**

3 It is intuitively clear that spatially dense geophysics can offer valuable information for improved
4 groundwater modeling for decision making. However, many important questions can be raised. For
5 example: how beneficial is it to collect and use EM data in groundwater modeling for a complex 3D
6 hydrogeological system; how much can be gained by using for example JHI instead of SHI for
7 model calibration; are both inversion approaches prone to lead to biased parameter estimates or
8 model predictions; and what model prediction types will benefit from using EM data in connection
9 with the model development and calibration. The answers to these questions will to some (large?)
10 extend depend on the actual hydrogeological setting as well as on what types of prediction are going
11 to be made by the groundwater model.

12 To provide such answers we have developed a cross-disciplinary, flexible platform to examine the
13 worth of geophysical data for improvement of groundwater model predictions in potentially
14 complex environments. The platform can be used to build synthetic experiments that have similarity
15 with the actual hydrogeological and geophysical systems to be investigated, the types of data to
16 potentially be collected, and the types of models to potentially be used. The flexibility of the
17 platform allows easy investigation of the data worth when using alternative data sampling and
18 alternative modeling or inversion strategies. Because of the supposed similarity between the
19 synthetic and the actual systems, the conclusions from the synthetic study can be transferred to
20 actual investigation. The platform is called HYTEB, which is an abbreviation of **HY**drogeophysical
21 **TE**st-**B**ench. HYTEB builds on a merge of software from different disciplines such as stochastic
22 hydrogeological modeling, groundwater modeling, geophysical modeling, and advanced highly
23 parameterized inversion using SHI, CHI or JHI. HYTEB can also support examination of use of
24 geophysics in a stochastic groundwater modeling context (which will be demonstrated in a
25 manuscript in preparation).

26 **1.4 Objectives**

27 The paper has the following objectives. First, it will present the important elements and steps in use
28 of HYTEB. Since HYTEB and its use is interdisciplinary, the presentation and the following case
29 study introduce geophysicists to the methods, challenges, and purposes of groundwater modeling,
30 and groundwater modelers to some of the challenges of using mainly electromagnetic data for
31 groundwater model calibration purposes. Second, HYTEB is used to examine the worth of adding a

ground based time-domain electromagnetic data set to a hydrological data set when making a groundwater model for a glacial landscape of a kind that is typical to parts of Northern Europe and North America. It is investigated if the worth of adding the geophysical data depends on the type of groundwater model prediction as well as on whether the geophysical and hydrological data are inverted sequentially or jointly. Section 2 of this paper describes the elements of HYTEB and how they are used, Section 3 describes the case study, Section 4 presents the results, while Section 5 makes a summary and draw conclusions.

2 The elements and concept of HYTEB (HYdrogeophysical TEst-Bench)

Our primary objective in developing HYTEB is to provide a synthetic environment that allows users to determine the value of geophysical data and, further, to investigate how best to use those data to develop groundwater models and to reduce their prediction errors. We suggest that this can best be investigated by using a synthetic case study for which the “generated synthetic”, in the following termed “reference”, hydrologic and geophysical systems are known and the influences of different sources of error can be investigated. We use physical and geophysical forward simulators to generate measurements that would be collected from the reference systems in the absence of noise. We then examine the influence of measurement error and other sources of error on model predictions of interest. By repeating this for different synthetic system realizations (i.e. for different reference systems) and for different data sets it becomes possible to statistically quantify the worth of the various data for improving the predictions of interest. The work flow of HYTEB is shown in Figure 1. The procedure is divided into 6 steps, which will be described separately and briefly in the following subsections.

2.1 Step 1 – Generation of geological realization

The first step is to generate a synthetic realization of the type of geological system under study. The generation can be made conditional on lithological data from boreholes. The borehole data can be imaginary, a real data set, or a combination of data, hydrogeologic structure, and geostatistics. Figure 1, step 1, displays an example of a generated system consisting of categorical geological deposits on a plain as well as in a valley buried under a part of the plain. The deposits are underlain by impermeable bedrock (not shown). Such categorical geological settings can, for example, be generated using T-PROGS (Carle 1999) or BlockSIS (Deutsch 2006). The spatial discretization

used for the geological realization also defines the spatial discretization of the numerical model used to simulate groundwater flow or any other process model that a user decides to integrate into HYTEB.

2.2 Step 2 – Generation of reference groundwater system, data set, and predictions

Using the same spatial discretization as in step 1, the second step is to define the boundary conditions and the hydraulic and solute transport property values for the generated geological system. The hydraulic and solute transport properties can include, for example, hydraulic conductivity, specific storage, and effective porosity. For categorical deposits (as in Figure 1) the value of each type of property will typically vary among categories as well as within each category. Such variation can be simulated as categorical random fields by using e.g. SGSIM (Deutsch and Journel 1998) or FIELDGEN (Doherty 2010). The generated realization of boundary and property values is used in a numerical simulator of groundwater flow and solute transport to simulate a set of state variables to be used in step 5 as hydrologic observations used for model calibration; random error is typically added to this observation data to represent all sources of noise that corrupt real observations. The numerical simulator is also used to simulate a set of predictions that are considered of particular interest to the study. We have implemented MODFLOW-2000 (Harbaugh et al. 2000) as the numerical simulator of groundwater flow and MODPATH (Pollock 1994) to simulate solute transport by particle tracking.

In the following, the numerical simulators using the boundary conditions and property values that represent the system realization are called “the reference groundwater system”, and the predictions (for example forecasts) simulated for this system are called “reference predictions”.

2.3 Step 3 – Generation of reference geophysical system and data set

The third step is to define the property values of the geophysical system corresponding to the geological realization generated in step 1. Like the hydraulic properties, the geophysical properties can be considered and simulated as categorical random fields. A geophysical property of relevance can, for example, be the electrical resistivity of the spatially variable geological deposits. For some geological systems, it is found or assumed that there is correlation between electrical resistivity and hydraulic conductivity. In this case, the hydraulic and geophysical property fields must be generated

1 to be dependent. Various empirical petrophysical relationships between hydraulic conductivity and
2 electrical resistivity have been proposed (Slater 2007). Both positive and negative relationships
3 have been reported, and there can be significant uncertainty in the relationship (e.g. Mazáč et al.
4 1985). It is common to use a linear log-log relationship which is given some theoretical support by
5 Purvance and Andricevic (2000). Having defined the property values of the geophysical reference
6 system, the geophysical instrument responses are simulated to produce a noise-free geophysical
7 data set that can be corrupted by adding method specific and random error. Ideally a 3D code
8 should be used. Codes for 3D computation of TEM responses have been developed (e.g. Árnason
9 1999), but the computation is impractical and burdensome. As a practical alternative we suggest to
10 simulate TEM responses by a 1D code, where the 1D geophysical model is created from the
11 reference system by pseudo-3D sampling, that is by taking the logarithmic average of the cells
12 within the radius of the EM foot print at a given depth. Modeling TEM in 1D can be problematic in
13 connection with mineral exploration, but for sedimentary environments the 1D approach should
14 work well (Auken et al. 2008; Viezzoli et al. 2010a). In HYTEB we use AarhusInv (Auken et al.
15 2014) to simulate electromagnetic instrument responses.

16 In the following, the geophysical simulator using the actual realization of geophysical parameter
17 values is called the “reference geophysical system”.

18

19 **2.4 Step 4 – Model construction and parameterization**

20 In this step, the synthetic data are used to constrain parameter estimation for a groundwater model
21 of the reference groundwater system. Each property of the real groundwater and geophysical
22 systems needs to be parameterized in the groundwater model. This step thus corresponds to the
23 construction of a groundwater model of a real field system on the basis of the available real data. In
24 the synthetic case, the groundwater model can be discretized exactly as the “reference groundwater
25 system” or it can use a coarser discretization. Here we adopt the former alternative to reduce
26 numerical discretization error. However, this effect could be examined if it were of interest to a
27 particular study.

28 In studies of real systems, the groundwater model is often constructed to consist of zones of
29 uniform hydraulic properties. The subdivision into zones is typically done subjectively by an expert
30 on the basis of geological, hydrological, and geophysical data (Seifert et al. 2007; Di Maio et al.

2013). This principle can also be used to define zones of a model of the synthetic groundwater system by using the synthetic lithological data from boreholes used in step 1, the hydrological data set generated in step 2, and geophysical models estimated by inverting the geophysical data sets generated in step 3. In this case, the geophysical data must be inverted between step 3 and step 4. The inverted data are used either in step 4 to support parameterization of the groundwater model or in step 5 for groundwater model calibration. To avoid over-reliance on the geophysical data, it may be argued that they should not be used in both steps 4 and 5. If the geophysical data are used in step 4, they must be inverted before inverting the hydrological data (carried out in step 5); this is an example of sequential hydro-geophysical inversion (SHI).

An alternative parameterization approach uses the concept of pilot points (Certes and De Marsily 1991) to parameterize the property fields and to let the data determine the variation of the model property fields (e.g. Doherty, 2003). Pilot point approaches result in a smooth property variation within the model domain (Doherty 2003) rather than sharp zonal parameter fields. Pilot points can be used in combination with zones e.g. to represent property variation within categorical deposits.

HYTEB allows any type of parameterization, for example zones, pilot points, or combinations hereof.

It is emphasized that in the following we use the term “groundwater model” for a simulator that is set up, parameterized, and calibrated to make “model predictions” of states occurring in the reference groundwater system. States occurring in (i.e. simulated for) the reference groundwater system are here termed “reference predictions”. The objective of model calibration is to make the model predictions as similar as possible to the reference predictions.

2.5 Step 5 – Calibrate the model(s)

The fifth step is to calibrate the groundwater model by using the data set produced in step 2 to estimate the model parameters. The step may also include estimation of geophysical model parameters on the basis of the data sets produced in step 3. The simultaneous estimation of the hydrologic and geophysical parameters can be done by using either the coupled (CHI) or joint (JHI) hydro-geophysical inversion approaches (Hinnell et al. 2010; Vilhelmsen et al. 2014). When the number of parameters is large compared to the number of data, the minimization can be aided by

1 using a regularization technique (for example singular value decomposition or Tikhonov
2 regularization); see Oliver et al. (2008) for an overview.

3

4 **2.6 Step 6 – Simulate model predictions, then repeat steps 1-6**

5 After successful calibration, the groundwater model is used to make model predictions equivalent to
6 the reference predictions of step 2. (A prediction is a state-variable different from the calibration
7 data, for example a forecast.) For each prediction, this produces one value computed by a calibrated
8 model that can be compared with the equivalent reference value. It is not possible to make
9 meaningful inference about a model's ability to make a specific prediction from just one
10 experiment. To test the reproducibility the experiment, steps 1 to 6 needs to be repeated a number of
11 times. Each repetition involves generation of a new realization of the geological system and the
12 corresponding reference groundwater and geophysical systems, new data sets (i.e. new reference
13 systems), model calibration, and predictions. The number of repetitions should be sufficient to
14 provide a basis for making consistent statistical inference on the model prediction results.

15

16 **2.7 Step 7 – Evaluate model prediction results**

17 When steps 1 to 6 have been completed, an ensemble of pairs of model prediction and equivalent
18 reference prediction are plotted to evaluate the model performance. As discussed by Doherty and
19 Christensen (2011), if the plotted data do not scatter around the identity line, it indicates bias in the
20 model prediction. If the intercept of a regression line through the scatter of points deviates from
21 zero it indicates consistent bias in the prediction due to consistent errors in null space parameter
22 components omitted from the parameterized groundwater model; if the slope of the regression line
23 deviates from unity it indicates parameter surrogacy incurred through model calibration (see
24 Doherty and Christensen, 2011, for further explanation).

25 Ultimately, calibrated models are used to make predictions of interest. These predictions are
26 generally in the future and may describe the response of the system to alternative management
27 actions. The calibrated model, or model ensemble, can be used to predict future hydrologic
28 responses to near-term actions, thereby providing information critical to informed decision making.
29 Increasingly, these decisions consider both the accuracy (bias) and the uncertainty of model

predictions in a probabilistic framework (Freeze et al. 1990; Feyen and Gorelick 2005; Nowak et al. 2012)

3 Demonstration model

We demonstrate the use of HYTEB through a synthetic case focusing on making three types of model predictions that are commonly useful for groundwater management: (i) hydraulic head; (ii) head recovery and change of groundwater discharge related to abandoning pumping from a well; and (iii) the recharge area and the average age of groundwater pumped from that well. The synthetic demonstration model used here is, to a large degree, inspired by the model of Doherty and Christensen (2011). The hydrogeological setting of the model domain is typical for large areas of northern Europe and North America: a glacially formed landscape with a buried tunnel valley eroded into impermeable bedrock (fat clay) with very low electrical resistivity (Wright 1973; Piotrowski 1994; Clayton et al. 1999; Jørgensen and Sandersen 2006). The case is designed to have a perfect relationship between hydraulic conductivity and electrical resistivity. This is chosen to make a best possible case for resolving change of lithology and change of hydraulic conductivity inferred from electrical resistivity. The deposits above the bedrock are glacial of different types. For the sake of clarity, the synthetic model will be described in the section below, and the exceptions and changes from the setup of Doherty and Christensen (2011) will be highlighted. Each HYTEB step will be presented in order following Figure 1.

3.1 Generation of geological system realizations (Step 1)

The domain is rectangular, 7 km north-south (N-S) and 5 km east-west (E-W). It is capped by 50 m of glacial sediments deposited as gently N-S elongated layered structures composed of sand, silt or clayey till. The bedrock consists of impermeable clay with a horizontal top surface in most of the catchment, but a 150 m deep and 1500 m wide valley has been eroded into it in the central part of the domain (Doherty and Christensen, 2011, used a 1000 m wide valley). The valley has sloping sides with an angle of approximately 17 degrees and runs in the N-S direction from the coast and 5 km inland (Doherty and Christensen, 2011, used a steeper 21 degree slope). The valley is filled with glacial sediments deposited in highly N-S elongated layered structures consisting of gravel, sand, silt or clayey till. The exact stratigraphy is only known at the locations of 35 synthetic boreholes of

1 varying depth (Figure 2). This borehole stratigraphy was used to condition all generated geological
2 system realizations.

3 Realizations of the 3D geological model were generated on a uniform rectangular grid. The cells of
4 the grid have horizontal dimensions of 25 m x 25 m and 10 m thickness, so the overall dimensions
5 of the grid are $(n_x, n_y, n_z) = (200, 280, 20)$, giving a total of 1,200,000 cells. The categorical
6 depositional geology of the 3D model grid was simulated using T-PROGS (Carle 1999). The
7 proportions and mean lengths for the different categories of sediments are provided in Table 1. The
8 bedding is represented as a maximally disordered system using “maximum entropy” transition
9 frequencies (Carle 1999).

10 A total of 1000 geologic system realizations were generated. These categorical realizations were all
11 conditioned on the same stratigraphy for the 35 boreholes, but are otherwise independent. Figure 3
12 shows one of these realizations.

14 **3.2 Reference groundwater system, data, and predictions (Step 2)**

15 The groundwater system is bounded to the south by a large freshwater lake (specified head), while
16 the other lateral boundaries are closed (no flux). The flow is steady state and driven by recharge
17 caused by the difference between precipitation and evapotranspiration. The local recharge depends
18 on the type of sediment at the surface (because this is assumed to influence evapotranspiration).
19 Most of the groundwater discharges into the lake directly from the subsurface, but approximately
20 35% discharges into a straight stream running 3.5 km inland S-N in the middle of the domain from
21 the southern boundary (coast). (The setup used by Doherty and Christensen, 2011, did not include a
22 stream.) Furthermore, groundwater is pumped from a deep well located in the south-central part of
23 the buried valley. The well is located at $x=2487.5\text{m}$ and $y=1912.5$ and the pumping rate is 0.015
24 m^3s^{-1} . The well screens the deepest 10 meters of the valley in a laterally extensive body of sand and
25 gravel.

26 Within each category of sediment, the hydraulic conductivity varies as a horizontally correlated
27 random field. The same is the case for porosity and recharge. The random fields were generated by
28 FIELDGEN (Doherty, 2010) using the sequential Gaussian simulation method (Deutsch and
29 Journel 1998) with the geostatistical parameters given in Table 1.

3.2.1 Hydrological data set

All 35 boreholes have been constructed as monitoring wells; each well screens the deepest 10 m (deepest cell) of sand registered in the borehole (Table 2; Figure 2). For each realization, groundwater flow was simulated as confined using MODFLOW-2000 (Harbaugh et al. 2000). The corresponding set of values for the hydrological observations, consisting of hydraulic head in the 35 wells and the river discharge, were extracted from the MODFLOW-2000 output. Independent Gaussian error with zero mean and 0.1 m standard deviation was added to the true head values to produce the head observations. Gaussian error with zero mean and a standard deviation corresponding to 10 % of the true river discharge was added to the discharge to produce the stream flow observation used for model calibration.

3.2.2 Reference predictions

Collecting and using new geophysical data is likely to constrain some groundwater model parameters more than others. Different predictions of interest will have different sensitivities to different model parameters. As a result, the addition of geophysical data for groundwater model calibration is likely affect the error of model predictions differently. To illustrate this, we present seven types of predictions of interest in Table 3.

Prediction types 1 to 3 relate to steady-state flow conditions with groundwater being pumped from the deep well in the buried valley. This is the same situation for which the hydrological dataset was generated. Type 1 concerns head prediction at ten locations (Figure 2 and Table 4). Type 2 is the size of the recharge area of the pumping well. Type 3 is the average age of the groundwater pumped from the well.

Prediction types 4 to 7 relate to a new steady-state long after pumping from the well has been stopped. Type 4 is head recovery at the ten locations given in Figure 2 and Table 4. Type 5 is the travel time of a particle flowing with the groundwater from the location where it enters the system at the northern domain boundary ($x=2500$, $y=6975.5$, $z=0$) until it exits the system either into the lake (at the southern boundary) or into the stream. Type 6 is the relative location of the exit point of that particle defined as the Euclidean distance between the reference and the model predicted endpoint in a three dimensional space. Type 7 is groundwater discharge into the stream.

The prediction types 1, 4 and 7 were simulated by MODFLOW-2000 (Harbaugh et al. 2000). The other prediction types were simulated by forward particle tracking using MODPATH version 5 (Pollock 1994) and MODFLOW-2000 results. Types 5 and 6 were simulated by tracking a single particle with MODPATH. Types 2 and 3 were simulated by placing particles in a horizontally uniform 25 m grid at the surface (i.e. releasing one particle at the surface at the center of each model cell) and tracking them forward in time until they reached either the river, the southern boundary, or the pumping well. Each particle represents an area of 25 x 25 m². The number of particles ending in the pumping well thus defines the well's recharge area. The average groundwater age is computed as the weighted average of the travel time for all of the particles captured by the well. The weight for a particle is calculated as the recharge rate (in m³/s) from the 25 x 25 m² surface area represented by the particle divided by the pumping rate. This sum of all weights adds to one because water only enters the model through the uppermost layer.

3.3 Reference geophysical system and data – step 3

In the demonstration example, the geophysical property of interest is electrical resistivity of the subsurface. For simplicity it is assumed that there is a perfect relationship between hydraulic conductivity and electrical resistivity. The relationship is of the form

$$\log_{10}(K) = \beta_1 + \beta_2 \cdot \log_{10}(\rho), \quad (1)$$

where K is the hydraulic conductivity (m/s) derived from resistivity, ρ is the electrical resistivity (ohm-m), and $\beta_1 = \log_{10}(1e^{-12})$ and $\beta_2 = \log_{10}(4)$ are empirical shape factors that are constant within the model domain. The shape factor values reflect conditions where, for example, clay has low electrical resistivity and also low hydraulic conductivity, and sand has high electrical resistivity and high hydraulic conductivity. Eq. (1) was used to compute the resistivity within each cell of the geological system from the corresponding cell hydraulic conductivity.

Using a perfect relationship to generate resistivity from hydraulic conductivity must be characterized as the ideal case because in this case electrical resistivity data can be expected to provide maximal information about hydraulic conductivity. In practice, when possible, estimation of hydraulic conductivity from electrical resistivity is usually based on a site specific noisy linear log-log relationship (see e.g. Mazáč et al. 1985; Revil and Cathles 1999; Purvance and Andricevic 2000; Slater 2007), which has been found to be a positive relationship in some cases (Urish 1981;

Frohlich and Kelly 1985), and a negative relationship in other cases (Worthington 1975; Heigold et al. 1979; Biella et al. 1983).

3.3.1 Geophysical data set

It is assumed that measurements of the geophysical system are conducted at 77 uniformly distributed locations within the domain (Figure 2) using a ground based time domain electromagnetic system (TEM). It is assumed that the TEM system uses a receiver loop centered inside a $40 \times 40 \text{ m}^2$ square transmitter loop. Measurements are gathered from about 10 microseconds to 10 milliseconds using a steady current of 20 Amperes, which gives a magnetic moment of 32000 Am^2 which, for the studied environment, would provide a penetration depth of around 250 meters (Danielsen et al. 2003). For this system the electromagnetic field is propagating down- and outwards like smoke rings increasing with depth at an angle of approximately 30 degrees (West GF and Macnae JC 1991). In other words, the sounding loses resolution with depth because of its increasing footprint. In the following, we use the 1D simulation code AarhusInv (previously called em1Dinv; Auken et al. 2014) to simulate the geophysical responses. To mimic the loss of resolution with layer depth we use the logarithmic average resistivity of all model cells inside the radius of the foot print at a given depth. To obtain the geophysical data set, the simulated data were contaminated with noise consisting of: (i) Gaussian 3 % noise contribution and (ii) “background” contribution with a value of 3nV/m^2 according to the noise model suggested by (Auken et al. 2008). The noise-perturbed data were subsequently processed as field data (Auken et al. 2009).

3.4 Model construction and parameterization (Step 4)

The groundwater model uses the true boundary conditions except that recharge is to be estimated together with hydraulic conductivity. Because the reference groundwater and geophysical systems were generated with correlation between hydraulic conductivity and electrical resistivity, the hydraulic conductivity is parameterized by placing pilot points in each of the 20 layers at the locations where a geophysical sounding has been made. However, pilot points are excluded at depths of the impermeable bedrock. The number of pilot points used for hydraulic conductivity therefore totals 550 (Figure 2). Kriging is used for spatial interpolation (here using the correct correlation lengths) from the pilot points to the model grid. This kind of parametrization creates

smooth transition in hydraulic conductivity which may seem problematic to use in the current case where there are “categorical” (lithological) shifts in the reference fields. However, because the property contrasts between categories are so large and the geophysical data and the pilot points so many, it is expected that the categorical shifts in property value can be fairly well resolved by the used interpolation.

Recharge is parameterized by assuming a linear log-log relationship between recharge and hydraulic conductivity of the uppermost layer. The two shape factors of the log-log relationship are chosen as parameters to be estimated; they are assumed to be constant within the model domain. The total number of parameters for estimating recharge from hydraulic conductivity is thus two.

Electrical resistivity is sensitive to porosity, but that is not incorporated in the relationship within the present work. Therefore porosity cannot be estimated from the hydrological and geophysical data available here, we always use the reference porosity field for making model predictions. A geophysical model is set up for every location of the 77 TEM soundings. Each geophysical model is parameterized to have a fixed number of layers equal to one plus the number of groundwater model layers above bedrock; the layers above bedrock all have fixed 10 m thickness while the bedrock is assumed to be of infinite thickness. The estimated parameters of the model are the resistivity within each model layer. The total number of parameters for the 77 geophysical models is thus 627. The model responses were simulated using AarhusInv neglecting lateral heterogeneity. In other words, the inverse model is 1D, following the state of practice (Viezzoli et al. 2010a; Auken et al. 2014)

3.5 Model calibration by inversion (step 5)

Calibration of geophysical and groundwater models are conducted independently. However, for our demonstration problem, we want to explore the amount of “hydraulic” information contained within the geophysical dataset. We will do this by applying three different calibration methods.

3.5.1 Three calibration methods

Method 1 estimates groundwater model parameters on the basis of hydrologic data only (HI). This estimation involves constrained minimization of the misfit between model-simulated responses and the equivalent observation data. This misfit is quantified by the measurement objective function

$$\Phi_m = n_h^{-1} \sum_{i=1}^{n_h} \left(\frac{h_{obs,i} - h_{sim,i}}{\sigma_{h,i}} \right)^2 + n_r^{-1} \sum_{i=1}^{n_r} \left(\frac{r_{obs,i} - r_{sim,i}}{\sigma_{r,i}} \right)^2, \quad (2)$$

where h_{obs} and h_{sim} are observed and corresponding simulated hydraulic heads; r_{obs} and r_{sim} are observed and corresponding simulated river discharge; σ_h and σ_r are the noise levels (standard deviations) for the head and discharge data, respectively; n_h and n_r are the number of head, discharge observations, respectively. However, equation (2) cannot be minimized uniquely because the number of groundwater model parameters (552) is larger than the number of measurements (36). Method 1 therefore relies on minimization of the regularized objective function

$$\Phi_t = \Phi_m + \mu \cdot \Phi_r \quad (3)$$

where ϕ_t is the total objective function, ϕ_m is the measurement objective function given by (4), μ is a weight factor, and ϕ_r is a Tikhonov regularization term. Here, ϕ_r is defined as preferred difference regularization, where the preferred difference between neighboring parameter values is set to zero. The regularization weight factor, μ , is iteratively calculated, based on a linearized model approximation, during each optimization iteration making ϕ_m equal to a user specified target value (for details, see Doherty 2010). In this case, for ϕ_m defined by (2), the target value is set to 2 (indicating that the fitted data residuals correspond to the data noise levels).

Method 2 is joint hydrogeophysical inversion (JHI). For JHI, the hydrological model and the geophysical models are set up separately, but hydrological and geophysical parameters are estimated simultaneously by minimization of a joint objective function where the regularization term uses an assumed relationship between electrical resistivity and hydrological conductivity. The minimized objective function is of the same form as (3), but the measurement and regularization terms are different. For Method 2 the measurement objective function is defined as

$$\begin{aligned} \Phi_{m,joint} = n_h^{-1} \sum_{i=1}^{n_h} \left(\frac{h_{obs,i} - h_{sim,i}}{\sigma_{h,i}} \right)^2 + n_r^{-1} \sum_{i=1}^{n_r} \left(\frac{r_{obs,i} - r_{sim,i}}{\sigma_{r,i}} \right)^2 \\ + n_{tem}^{-1} \sum_{i=1}^{n_{tem}} \left(\frac{V_{obs,i} - V_{sim,i}}{\sigma_{tem,i}} \right)^2 \end{aligned} \quad (4)$$

where n_{TEM} are of TEM observations, respectively. The first two terms on the right hand side of equation (4) are identical to the terms in (2). The values of V_{obs} and V_{sim} are observed and corresponding simulated decay data from TEM. Finally, σ_{tem} is the noise level for the TEM data. Each of the three terms on the right hand side of equation (4) is divided by the number of respective measurements to promote a balanced weight among the three datasets. The regularized objective term for the joint approach is also preferred differences, now defined as

$$\Phi_{r,joint} = \mu \cdot \sum_{i=1}^{n_{kpar}} \left(\log_{10}(K_{joint,i}) - \log_{10}(K_{mf,i}) \right)^2 \quad (5)$$

In (5), $K_{mf,i}$ is the estimate of the hydraulic conductivity at the i^{th} pilot point of the groundwater model; $K_{joint,i}$ is also an estimate of hydraulic conductivity but inferred from the estimated electrical resistivity at the same depth and location by using equation (1). In this case, the target value of $\phi_{m,joint}$ is set equal to 3.

Method 3 is sequential parameter estimation (SHI) modified from by Dam and Christensen (2003). First, the geophysical model parameters (electrical resistivities) are estimated on the basis of the geophysical data. Secondly, the groundwater model parameters are estimated on basis of the hydrologic data as well as the resistivity estimates that are used as regularizing prior information on the hydraulic conductivity. In the first step, the geophysical inversion is done as “smooth model” inversion (Constable et al. 1987). This means that each geophysical model has fixed 10 m layer thicknesses while the resistivity within the layers is estimated. The 77 1D models are inverted independently using AarhusInv (Auken et al. 2014), but vertical constraints were used to stabilize the inversion of each 1D model (Constable et al. 1987). In the second step, the estimated electrical resistivities are used to constrain the subsequent hydrologic inversion, which is carried out as minimization of equation (3) where the measurement objective function ϕ_m is defined by equation (2) while the preferred difference regularization term is defined by

$$\Phi_{r,seq} = \mu \cdot \sum_{i=1}^{n_{kpar}} \omega_i \left(\log_{10}(K_{seq,i}) - \log(K_{mf,i}) \right)^2 \quad (6)$$

As in (5), $K_{mf,i}$ is the hydraulic conductivity at the i^{th} pilot point of the groundwater model; $K_{seq,i}$ is the hydraulic conductivity at the pilot point calculated from the corresponding resistivity,

estimated in the first step of Method 3, by using equation (1). In (6), ω_i is a weight that can be varied between the terms of the summation in (6). The results presented in the following were obtained by using a weight of 1.0 for all preferred differences. (We also tried using weights determined as $\omega_i = (\beta_2 V(\rho_i))^{-1}$ where $V(\rho_i)$ is the variance of the log-resistivity estimate used to compute $\log_{10}(K_{seq,i})$. Changing the weights did not change the estimation results much; some prediction errors did reduce, others increased, but we found no general improvement by using $\omega_i = (\beta_2 V(\rho_i))^{-1}$ instead of the simple choice $\omega_i = 1$.) For method 3, the target value of ϕ_m is set equal to 2.

For all three methods, the objective function is minimized iteratively by the modified Gauss-Newton method. This involves recalculation of the sensitivity matrix for each iteration, which is time consuming due to the large number of model parameters.

3.5.2 Initial parameter values

We did the following to investigate how much the choice of initial parameter values influences the parameter estimates obtained by the three inversion approaches.

For method 1 (HI), we ran two inversions. In the first run, termed HI-T, we used the reference (true) hydraulic conductivity values at each pilot point as initial values. We acknowledge that this is not a realistic occurrence but it is done as a control to show the supposedly best possible outcome of HI. In the second run, termed HI-H, we assumed a homogeneous initial hydraulic conductivity field with K equal to 1×10^{-6} m/s which is equal to the true mean value of silt.

For method 2 (JHI), we ran three inversions. In the first run, termed JHI-T, we used the reference (true) parameter values for hydraulic conductivity and electrical resistivity at the pilot points. As above this is done to show the supposedly best possible outcome of JHI. In the second run, termed JHI-H, we used a constant hydraulic conductivity of 1×10^{-6} m/s and a constant electrical resistivity of 40 ohm-m at the pilot points. In the third run, termed JHI-G, we first ran independent geophysical inversions (one for each sounding location) using a homogeneous half space of 40 ohm meter as the starting model. The resulting estimates of electrical resistivity were subsequently used as initial parameter values for JHI-G at the resistivity pilot points, and they were used together with

1 relation (1) to produce the JHI-G initial values of hydraulic conductivity at the hydraulic
2 conductivity pilot points.

3 For method 3 (SHI), we present results from only one inversion sequence, termed SHI-G. First we
4 ran the independent geophysical inversions using a homogeneous half space of 40 ohm meter as the
5 initial model. Subsequently we used the estimated resistivities together with relation (1) to produce
6 the initial values for hydraulic conductivity at the pilot points that were used for the hydrologic
7 inversion carried out in step two of SHI-G. (As for JHI, we also tried using an initially
8 homogeneous hydraulic conductivity field for SHI; this gave a more blurred estimated hydraulic
9 conductivity field than what is presented later. So, like it is shown later for JHI, the result of SHI
10 was found to depend on the choice of initial parameter values.)

11

12 **3.5.3 Inversion software**

13 The objective functions were minimized using BeoPEST, a version of PEST (Doherty 2010) that
14 allows the inversion to run in parallel using multiple cores and computers. We used a new version
15 of BeoPEST modified by John Doherty particularly for our purpose to do gradient based
16 minimization involving several models with each of their parameters; thus the modified BeoPEST
17 exploits that different parts of the sensitivity matrix can be calculated by running just one of the
18 models. However, for method 3, the geophysical data were inverted using AarhusInv (Auken et al.,
19 2014).

20

21 **3.6 Picking 10 realizations**

22 For this demonstration, the computational burden would be overwhelming if the entire HYTEB
23 analysis was to be carried out for each of the 1000 system realizations. We therefore sought a way
24 to reduce the number of models to just 10 that would maintain a representative diversity of models.
25 The strategy we used to down sample from 1000 realizations to 10 was as follows.

26 We first decided to group the models based on the predictions of interest. It would be reasonable to
27 group models based on other characteristics, such as underlying conceptual model, or zonation, or
28 imposed boundary conditions. However, we contend that for both practical and scientific
29 applications, it is more often the predictions of models that are of primary interest than the structure

1 or parameterization of the models. We began by creating an ensemble from the 25 predictions of
2 interest listed in Table 3 over all 1000 realizations. We then used k-means clustering to group the
3 prediction sets into 10 clusters within this prediction space. Because the units of the predictions
4 varied, all predictions were whitened, or normalized, before clustering. For stability, we ran 1000
5 repetitions of the clustering to minimize the effects of initial cluster selection. Once the clusters
6 were defined, we identified the prediction set that was closest to the centroids. This resulted in ten
7 models that broadly represent the range of model behaviors, including both the range of each
8 prediction and the correlations among predictions.

9

4 Results

4.1 Model Calibration

Figure 4 shows the measurement objective function value, Φ_m , obtained for the various groundwater model calibration cases and for the 10 different system realizations. It also shows the separate terms of the objective function. We aimed at using weights that would make each term contribute by a value of approximately 1.0. For HI and SHI there are two terms, quantifying fit to head data and fit to the flux measurement, respectively; the results in Figure 4 show that the head data are fitted as intended while the flux measurement is fitted more closely than intended. This fitting picture is also seen for JHI. JHI tends to produce better fit to the hydrologic data than HI and SHI.

For JHI the objective function (4) has a third term quantifying fit to decay data of the TEM measurements. Figure 4 indicates that the actually used weighting for JHI ended by producing slightly better fit to the hydrologic data than to the TEM data. It also shows that for JHI the fit to the hydrologic data is not strongly dependent on the choice of initial parameter values; JHI-T for example did not always produce better fits than JHI-G or JHI-H. That JHI-T, JHI-G, and JHI-H lead to different fits (and different parameter estimates) shows that the JHI minimization problem may not be unique. However, we did not investigate if PEST parameters could have been set differently to thereby make the JHI minimization unique.

For two realizations HI-T produced much worse fit to the hydrologic data than HI-H (Figure 4): the HI-T minimization got stuck at a local minimum where a parameter adjustment improving the fit to head deteriorated the fit to the flux measurement. We did not investigate if PEST parameters could have been set differently to overcome this problem.

4.2 Estimated hydraulic conductivity fields

Figure 5 shows the reference hydraulic conductivity fields of the uppermost six layers and a representative cross section for one of the 10 chosen system realizations. It also shows the corresponding estimated hydraulic conductivity fields obtained by six different inversion runs. The figure can thus be used to visually compare the estimated hydraulic conductivity fields and to judge whether they resolve the structures of the reference system. Figure 6 shows corresponding pilot-

point-by-pilot-point scatter plots of reference versus estimated hydraulic conductivity. Except when noted specifically, the results in Figure 5 and Figure 6 for this realization are typical for all 10 chosen system realizations.

The second and third rows of Figure 5 show results for the two hydrologic inversion (HI) runs. Inversion HI-T, which used true (reference) parameter values as initial values, produces very blurred hydraulic conductivity fields. This is caused by the used Tikhonov regularization constraint which guides the inversion to estimate a field as smooth as possible while still fitting the calibration data. The estimated field for layer one has some structural similarity with the reference field but the estimated values vary much less than the reference values. Similar results are seen for layers 2 to 5 while structure has disappeared from the deeper layers representing the deposits in the buried valley. Similar results were achieved for three other realizations. For the remaining six realizations HI-T produced very blurred hydraulic conductivity fields for all model layers, having essentially no resemblance to the structure of the reference fields. The third row of Figure 5 illustrates that for inversion HI-H, which used homogeneous initial hydraulic conductivity fields, there is almost no structural similarity between the estimated and reference hydraulic conductivity fields, and for most layers the estimated field appears to be almost homogeneous. However, the cross sections show that the structure with high hydraulic conductivity in the bottom of the buried valley is resolved to some degree by both HI-T and HI-H. Figure 6 shows that both HI-T and HI-H underestimate hydraulic conductivities for high-permeability deposits (sand and gravel) but overestimate for low-permeability deposits (silt and clay). For HI-H, the range of estimated conductivities is the same for high-permeability and low-permeability deposits. For HI-T, there is a small difference between the two ranges – they are slightly shifted in the correct directions compared to HI-H.

The fourth row of Figure 5 shows hydraulic conductivity fields estimated by the sequential geophysical approach (SHI-G). For the upper layers, the true (reference) structures can be recognized, but the resolution decreases with depth. The cross section shows that the true structures of the upper five layers can be identified to some degree from the estimated fields. Because of loss of resolution, the structures cannot be identified inside the buried valley. Figure 6 shows that for low-permeability deposits, the range of estimated log-hydraulic conductivities is twice as large as the reference range of values, and the horizontal scatter around the identity line is considerable. For high-permeability deposits, the range of estimated values is much larger than the range of reference values, and the estimated values tend to be orders of magnitude too small (Figure 6). This happens

1 because the resistivities estimated from the TEM data in the first step of the SHI scheme often turn
2 out to be too small if the resistivity at depth is high. This is a well-known result from the fact that
3 the sensitivity of TEM data with respect to layers of high resistivity reduces with depth, which
4 causes problems of equivalence for the geophysical models. (This has been demonstrated and
5 discussed by Auken et al. 2008 for a similar type of geological system.) When resistivity estimates
6 that are too small are used to regularize the second hydrologic inversion step of the SHI scheme, the
7 hydraulic conductivity estimates are likely to be too small as well. Similarly, hydraulic conductivity
8 estimates are too high in some high-resistivity parts of the shallow layers (Figure 6) because the
9 resistivity estimated from TEM tends to be too high due to low sensitivity of the TEM data. For the
10 studied system, this shows that resistivities estimated by independent TEM data inversion must be
11 used with caution as estimators of hydraulic conductivity or as regularization means for subsequent
12 hydrological inversion. In this case, the absolute relationship between hydraulic conductivity and
13 reference electrical resistivity led to an over-reliance on the use of inferred resistivities to populate
14 the model's hydraulic conductivity field.

15 The last three rows of Figure 5 show hydraulic conductivity fields estimated by the three joint
16 hydrogeophysical inversion runs (JHI-T, JHI-H and JHI-G), respectively. JHI-T, which used true
17 (reference) parameter values as initial values, resolves the true structures of the upper five layers
18 well while the estimated field of layer six is blurred; the cross section shows that the true structures
19 within the buried valley are also resolved to some degree. Figure 6 shows that estimated versus
20 reference hydraulic conductivity values plot nicely along the identity line for JHI-T. The resolution
21 of structures (Figure 5) and the quality of the K estimates (Figure 6) deteriorate for JHI-H and JHI-
22 G, both of which use less informative initial parameter values. Figure 5 visually indicates that JHI-
23 G resolves structures better than JHI-H. For sand and gravel deposits Figure 6 shows wider
24 horizontal scatter for JHI-G than for JHI-H. It also shows that estimated hydraulic conductivity for
25 sand and gravel tends to be much too small for both JHI-G and JHI-H (the explanation of which is
26 similar to that given for SHI above), and that particularly JHI-H cannot resolve variations in
27 hydraulic conductivity within the buried valley: the estimated values vary only within roughly an
28 order of magnitude whereas the reference values vary within five orders of magnitude.

29 **4.3 Prediction results**

30 For each of the ten chosen geological realizations, each of the six calibrated groundwater models
31 were used to make the model predictions described in section 3.2.2. Figure 7 shows five examples

of scatter plots of reference predictions versus calibrated model predictions; each plot shows ten points, each of which corresponds to a particular geological realization selected by the clustering. Each plot also gives the mean error of the prediction (ME) calculated from the ten model predictions. The five predictions represented in Figure 7 are head in the capping layer at location 1, head recovery at location 1, head recovery within the deeper part of the buried valley at location 8 near the pumping well (Figure 2), groundwater discharge to the river after pumping has stopped, and recharge area of the pumping well.

Figure 8 shows the mean absolute relative error (MARE) for the 25 model predictions made by models calibrated with six inversion approaches. The relative error magnitudes are calculated as the absolute value of the difference between the reference and model predicted value for each prediction of interest averaged over the ten geological realizations considered. The prediction results are discussed individually below.

4.3.1 Head prediction

All calibrated groundwater models appear to be fairly good predictors of hydraulic head. Nearly unbiased head prediction is exemplified by the plots in the first column of Figure 7 for which the points scatter around the identity line. This indicates that all calibrated models make unbiased prediction of hydraulic head at location 1. However, the scatter around the identity line appears to be larger for HI calibrated models than for JHI calibrated models. This indicates that the use of geophysical data in JHI reduces the uncertainty of this head prediction as compared to the HI calibrated models. The scatter plots for the other head predictions are similar to those shown for location 1.

Figure 8 shows that for all head predictions except at location 2, the use of geophysical data with SHI-G, JHI-H and JHI-G reduces the prediction error when compared to the HI based predictions. It also shows that the relative error magnitude is smaller for head predictions than for most other prediction types. Only change of discharge prediction has a relative error magnitude comparable to the head predictions. The small relative head prediction errors are likely due to the fact that this type of prediction is similar to the head data used for model calibration. Only the location differs between prediction and calibration heads.

4.3.2 Head recovery prediction

Head recovery due to cessation of pumping is a type of prediction that turns out to be biased for all calibrated models. This is exemplified by the results shown in the second and third columns of Figure 7. The two plots in the top of the second column indicate that head recovery at location 1 tends to be underpredicted by the models calibrated by purely hydrologic inversion (HI-T and HI-H). The third plot in this column indicates that SHI-G slightly reduces the bias seen in the HI-based model. Finally, the last three plots in the second column of Figure 7 show that all the models calibrated by JHI appear to be better predictors for this head recovery than the HI and SHI-G based models. The quality of this model prediction appears to be unaffected by the choice of initial parameter values used for JHI. However, for JHI the points tend to scatter around a line with an intercept less than zero and a slope larger than unity. The former indicates consistent bias in the prediction probably due to consistent errors in null space parameter components omitted from the parameterized groundwater model; the latter probably indicates parameter surrogacy incurred through model calibration (see section 2.7). The appearances of scatter plots for head recovery at locations 2 to 7 are similar to that for recovery at location 1 (Figure 7).

The second plot in the third column of Figure 7 indicate that head recovery at location 8 within the deeper part of the buried valley is predicted fairly well for nine out of ten geological realizations when the model is calibrated by hydrologic inversion (HI-H); however, the nine points tend to fall slightly below the identity line while the tenth point falls far above the identity line. Generally, the plots indicate a consistent underprediction of head using HI-based inversion. The remaining plots in the third column show that recovery prediction at location 8 turns out to be too large for the models calibrated with geophysical data (JHI) or by using geophysics based regularization (SHI).

Figure 8 shows that for recovery predictions 1 to 7, the use of geophysical data with SHI-G, JHI-H and JHI-G reduces the prediction error when compared to the HI based predictions. For recovery 1, this is confirmed by the scatterplots in column two of Figure 7. On the contrary, for recovery prediction 8, located within the buried valley, both Figure 7 and Figure 8 show that including the geophysics in the groundwater modelling with either SHI-G, JHI-H or JHI-G tends to increase the prediction error as compared to HI-H and HI-T. Depending on the choice of initial parameter values, a similar result is seen for recovery predictions 9 and 10. (Explanation for this predictive degradation is given above, in the end of the first paragraph of this subsection.) It is finally noted that recovery prediction 2 benefits from use of geophysical data while head prediction at the same

location does not, and that the relative error magnitude is larger for recovery predictions than for head predictions. This is likely because head recovery depends on a different stress situation than that represented by the head calibration data.

4.3.3 Discharge prediction

The scatter plots in the fourth column of Figure 7 indicate that discharge to the river without pumping is overpredicted except for the HI-T and JHI-T based models. Further, this is a type of model prediction that is not improved by including geophysical data by the SHI or JHI inversions used here (compare for example the HI-H plot with the JHI-G plot). This is confirmed by the relative error magnitudes for discharge shown in Figure 8.

4.3.4 Recharge area and other particle tracking predictions

The plots in the fifth column of Figure 7 are for the recharge area prediction. Except for JHI-T and JHI-G, the points in all plots appear to fall along an almost vertical line; the scatter along the vertical axis is much longer than the scatter along the horizontal axis, indicating that all of these models are a poor, highly biased predictor of the pumping well's recharge area. Including TEM data in the model calibration only improves this model prediction for JHI-T and JHI-G. Further analysis shows that at least part of the reason for the poor prediction is that the estimated areal average recharge for the model domain in all cases is too low. Lower estimated recharge rates requires a larger predicted recharge area to balance the rate of water pumped from the pumping well. For the JHI-T models, the estimated areal recharge amounts to about two thirds of the actual average recharge. For the JHI-H models the estimated recharge tends to be less than half (for one model realization as low as one third) of the actual area. The estimated areal recharge for the other models is between the JHI-T and JHI-H estimates. It should be mentioned that all calibrated models sufficiently fit the river discharge measurement; the underestimated recharge means that the simulated discharge to the lake turns out to be too small (typically less than half of the actual discharge to the lake; for one calibrated model there is almost no simulated lake discharge).

It is finally mentioned that the scatter plots look similar to those in column 6 of Figure 7 for the prediction of average age of groundwater pumped from the well and for the prediction of particle travel time. The explanation for these poor predictive performances must be because the calibrated hydraulic conductivity field is too smooth (and the hydraulic connectivity therefore exaggerated) in the calibrated models. Figure 8 show that use of TEM data does not improve the model performance with respect to prediction of groundwater age and particle travel time.

5 Discussion and conclusions

It is intuitively clear that geophysics can offer valuable information for improved groundwater modeling, but for an actual investigation it is often unclear how, at what cost, and to what extent modeling can be improved by adding geophysical data. This paper presents a newly developed platform that allows for such an application- and method-specific examination of the potential value of using geophysical data and models to develop a groundwater model and improve its predictive power. We call the platform **HYdrogeophysical TEst-Bench** (HYTEB). HYTEB allows for treatment of hydrologic and geophysical data and inversion approaches. It can be used to examine the combined use of hydrologic and geophysical data, including model parameterization, inversion, and the use of multiple geophysical or other data types. It can also be used to discover potential errors that can be introduced through petrophysical models used to correlate geophysical and hydrologic parameters. We use HYTEB to work with rather complex, fairly realistic but synthetic systems. In this work we strive at (and recommend) balancing complexity with the advantage of knowing the ‘true’ system or condition to assess model/data performance, and at avoiding to overextend the likely value of data or models beyond the tested conditions.

Our recommended way of using HYTEB is demonstrated by synthesizing a hydrogeological environment that is typical to parts of northern Europe and northern America, consisting of various types of glacial deposits covering low-permeability (in practice impermeable) bedrock of Tertiary clay, which has a surface with the form of a plateau with a deep valley buried by the glacial deposits. HYTEB is used to investigate to what extent groundwater model calibration and, often more importantly, model predictions can be improved for this kind of setting by including in the calibration process electrical resistivity estimates obtained from TEM data in two different ways: by using either sequential hydrogeophysical inversion (SHI) or joint hydrogeophysical inversion (JHI). For simplicity we assumed that the resistivity correlates with hydraulic conductivity and that the relationship is constant and known. The results are compared to those obtained by a groundwater model calibrated by purely hydrologic inversion (HI).

The calibrated groundwater models are parameterized by many pilot points that should allow a reasonable resolution of the hydraulic and geophysical property fields at depths where the properties are resolved by the data. Using PEST (Doherty, 2010), Tikhonov or geophysical regularization is used to stabilize the HI, SHI, and JHI inversion problems. In this case, JHI tends to produce the best fit to the data while SHI and HI produce comparable fits.

1 For HI, the estimated hydraulic conductivity field turns out to be very smooth in the top layers and
2 almost homogeneous in the deeper layers, which is expected for this type of (Tikhonov)
3 regularization. For SHI and JHI, the estimated hydraulic conductivity field resolves much of the
4 true structures in the shallow layers while less or, in the deeper part, no structure is resolved inside
5 the buried valley. However, the estimated hydraulic conductivities are orders of magnitude wrong
6 in some parts of the model. This occurs because the resistivities estimated for the geophysical
7 models either in the first step of the SHI scheme or during the JHI scheme can turn out to be very
8 erroneous when the sensitivity of the TEM data with respect to resistivity is low. Such uncertain,
9 potentially very erroneous, resistivity estimates should be discarded (or filtered out) from the SHI or
10 JHI. By not doing this, we showed that resistivities estimated by SHI or JHI must be used with
11 caution as estimators of hydraulic conductivity or as regularization means for subsequent
12 hydrological inversion; the use of the absolute relationship between hydraulic conductivity and
13 electrical resistivity led to an over-reliance on the use of inferred resistivities to populate the
14 model's hydraulic conductivity field.

15 With respect to reducing model prediction error, it depends on the type of prediction whether it has
16 value to include geophysics in the model calibration. It was found that all models are good
17 predictors of hydraulic head. However, head prediction errors tend to be reduced for models
18 calibrated by SHI or JHI as compared to models calibrated by HI.

19 When the stress situation is changed from that of the hydrologic calibration data, then all models
20 make biased predictions of head change. Use of geophysical data or models (with JHI or SHI)
21 reduces error and bias of head prediction at shallow depth but not in the deep part of the buried
22 valley near the pumping well (where the stress field change the most). Analyzing the prediction
23 results by the method described by Doherty and Christensen (2011) indicates that geophysics helps
24 to reduce parameter null space as well as parameter surrogacy for parameters determining the
25 shallow part of the hydraulic conductivity field. In hindsight, this is obvious since the TEM method
26 better resolves the shallow variations in glacial deposits' resistivity than the variations inside the
27 deep buried valley.

28 For model prediction of change of discharge to the stream, there is no improvement in using
29 geophysics. HI based prediction results are comparable to SHI and JHI based results.

1 All models are a very poor predictor of the pumping well's recharge area and groundwater age. The
2 reason for this is that distributed recharge is here estimated during the model calibration together
3 with distributed hydraulic conductivity. Recharge is parameterized by assuming a linear log-log
4 relationship between recharge and hydraulic conductivity of the upper model layer; two shape
5 factors of the relationship are treated as parameters that are calibrated together with the pilot point
6 parameters for hydraulic conductivity and (for JHI) resistivity. It was assumed that the shape factors
7 could be estimated because stream discharge data were included in the calibration data set. All
8 models fit these data, but the estimated areal recharge turned out to be two thirds or less of the
9 actual areal recharge. The predicted recharge area of the pumping well and the predicted age of the
10 pumped water therefore turn out to be much too large. So another important insight from this study
11 is that recharge should be parameterized and estimated in a different way than it was done in the
12 demonstration example. Alternatively HYTEB could be used to consider adding other types of data
13 to better constrain recharge rates.

14

15 **Acknowledgements**

16 The presented work was supported by HyGEM, Integrating geophysics, geology, and hydrology for
17 improved groundwater environmental management, Project no. 11- 15 116763. The funding for
18 HyGEM is provided by The Danish Council for Strategic Research. John Doherty is thanked for
19 making modifications of BeoPEST. Finally, we thanks Troels N. Vilhelmsen, Esben Auken, and
20 Anders V. Christiansen for their participation in discussions and sharing of experiences during the
21 initial phase of the project. HYTEB is available for download on [https://github.com/Nikolaj-](https://github.com/Nikolaj-KC/HYTEB)
22 [KC/HYTEB](https://github.com/Nikolaj-KC/HYTEB). With HYTEB can also be downloaded Python scripts demonstrating how to set up HI,
23 SHI and JHI as it is done in the manuscript.

24

6 References

- Abraham JD, Cannia JC, Bedrosian PA, Johnson MR, Ball LB, Sibray SS (2012) : Airborne Electromagnetic Mapping of the Base of Aquifer in Areas of Western Nebraska. In: U.S. Geol. Surv. Sci. Investig. Rep. 2011–5219. <http://pubs.usgs.gov/sir/2011/5219/>. Accessed 4 Jan 2016
- Archie GE (1942) : The Electrical Resistivity Log as an Aid in Determining Some Reservoir Characteristics. *Trans AIME* 146:54–62. doi: 10.2118/942054-G
- Auken E, Christiansen AV, H. Westergaard J, Kirkegaard C, Foged N, Viezzoli A (2009) : An integrated processing scheme for high-resolution airborne electromagnetic surveys, the SkyTEM system. *Explor Geophys* 40(2):184–192. doi: <http://dx.doi.org/10.1071/EG08128>
- Auken E, Christiansen AV, Kirkegaard C, Fiandaca G, Schamper C, Behroozmand AA, Binley A, Nielsen E, Effersø F, Christensen NB, Sørensen K, Foged N, Vignoli G (2014) : An overview of a highly versatile forward and stable inverse algorithm for airborne, ground-based and borehole electromagnetic and electric data. *Explor Geophys* 46(3):223–235. doi: 10.1071/EG13097
- Auken E, Christiansen A V., Jacobsen LH, Sørensen KI (2008) : A resolution study of buried valleys using laterally constrained inversion of TEM data. *J Appl Geophys* 65:10–20.
- Auken E, Jørgensen F, Sørensen KI (2003) : Large-scale TEM investigation for groundwater. *Explor Geophys* 34(3):188–194. doi: 10.1071/EG03188
- Biella G, Lozej A, Tabacco I (1983) : Experimental Study of Some Hydrogeophysical Properties of Unconsolidated Porous Media. *Ground Water* 21:741–751. doi: 10.1111/j.1745-6584.1983.tb01945.x
- Carle SF (1999) T-PROGS: Transition Probability Geostatistical Software. Users Manual.
- Certes C, De Marsily G (1991) : Application of the pilot point method to the identification of aquifer transmissivities. *Adv Water Resour* 14:284–300. doi: 10.1016/0309-1708(91)90040-U
- Clayton L, Attig JW, Mickelson DM (1999) Tunnel channels formed in Wisconsin during the last glaciation. Geological Society of America
- Constable SC, Parker RL, Constable CG (1987) : Occam's inversion: A practical algorithm for generating smooth models from electromagnetic sounding data. *GEOPHYSICS* 52:289–300. doi: 10.1190/1.1442303
- Cooley RL (2004) : A theory for modeling ground-water flow in heterogeneous media. In: US Geological Survey Professional Paper 1679, 220 pp. US Geological Survey Report,
- Cooley RL, Christensen S (2006) : Bias and uncertainty in regression-calibrated models of groundwater flow in heterogeneous media. *Adv Water Resour* 29:639–656. doi: 10.1016/j.advwatres.2005.07.012
- Dam D, Christensen S (2003) : Including Geophysical Data in Ground Water Model Inverse Calibration. *Ground Water* 41:178–189. doi: 10.1111/j.1745-6584.2003.tb02581.x
- Danielsen JE, Auken E, Jørgensen F, Søndergaard V, Sørensen KI (2003) : The application of the transient electromagnetic method in hydrogeophysical surveys. *J Appl Geophys* 53:181–198. doi: 10.1016/j.jappgeo.2003.08.004
- Day-Lewis FD (2005) : Applying petrophysical models to radar travel time and electrical resistivity

1 tomograms: Resolution-dependent limitations. *J Geophys Res* 110:B08206. doi:
2 10.1029/2004JB003569

3 Deutsch C V. (2006) : A sequential indicator simulation program for categorical variables with
4 point and block data: BlockSIS. *Comput Geosci* 32:1669–1681. doi:
5 10.1016/j.cageo.2006.03.005

6 Deutsch C V., Journel AG (1998) *GSLIB: Geostatistical Software Library and User's Guide*:
7 Clayton V. - Oxford University Press, Second Edi. Oxford University Press

8 Di Maio R, Fabbrocino S, Forte G, Piegari E (2013) : A three-dimensional hydrogeological–
9 geophysical model of a multi-layered aquifer in the coastal alluvial plain of Sarno River
10 (southern Italy). *Hydrogeol J* 22:691–703. doi: 10.1007/s10040-013-1087-8

11 Doherty J (2010) *PEST, Model-Independent Parameter Estimation, User Manual*, 5th ed, 336 pp.,
12 Watermark Numerical Computing

13 Doherty J (2003) : Ground Water Model Calibration Using Pilot Points and Regularization. *Ground*
14 *Water* 41:170–177. doi: 10.1111/j.1745-6584.2003.tb02580.x

15 Doherty J, Christensen S (2011) : Use of paired simple and complex models to reduce predictive
16 bias and quantify uncertainty. *Water Resour Res* 47(12):W12534. doi:
17 10.1029/2011WR010763

18 Doherty J, Welter D (2010) : A short exploration of structural noise. *Water Resour Res* 46
19 (5):W05525. doi: 10.1029/2009WR008377

20 Feyen L, Gómez-Hernández JJ, Ribeiro PJ, Beven KJ, De Smedt F (2003) : A Bayesian approach to
21 stochastic capture zone delineation incorporating tracer arrival times, conductivity
22 measurements, and hydraulic head observations. *Water Resour Res* 39 (5):1126. doi:
23 10.1029/2002WR001544

24 Feyen L, Gorelick SM (2005) : Framework to evaluate the worth of hydraulic conductivity data for
25 optimal groundwater resources management in ecologically sensitive areas. *Water Resour Res*
26 41 (3):W3019. doi: 10.1029/2003WR002901

27 Fitterman DV, Deszcz-Pan M (1998) : Helicopter EM mapping of saltwater intrusion in Everglades
28 National Park, Florida. *Explor Geophys* 29:240–243. doi: 10.1071/EG998240

29 Foged N, Marker PA, Christansen A V., Bauer-Gottwein P, Jørgensen F, Høyer A-S, Auken E
30 (2014a) : Large scale 3-D modeling by integration of resistivity models and borehole data
31 through inversion. *Hydrol Earth Syst Sci Discuss* 11:1461–1492. doi: 10.5194/hessd-11-1461-
32 2014

33 Foged N, Marker PA, Christansen A V., Bauer-Gottwein P, Jørgensen F, Høyer A-S, Auken E
34 (2014b) : Large-scale 3-D modeling by integration of resistivity models and borehole data
35 through inversion. *Hydrol Earth Syst Sci* 18:4349–4362. doi: 10.5194/hess-18-4349-2014

36 Franssen H-JH, Gómez-Hernández J, Sahuquillo A (2003) : Coupled inverse modelling of
37 groundwater flow and mass transport and the worth of concentration data. *J Hydrol* 281:281–
38 295. doi: 10.1016/S0022-1694(03)00191-4

39 Freeze RA, Massmann J, Smith L, Sperling T, James B (1990) : Hydrogeological Decision
40 Analysis: 1. A Framework. *Ground Water* 28:738–766. doi: 10.1111/j.1745-
41 6584.1990.tb01989.x

1 Frohlich RK, Kelly WE (1985) : The relation between hydraulic transmissivity and transverse
2 resistance in a complicated aquifer of glacial outwash deposits. *J Hydrol* 79:215–229. doi:
3 10.1016/0022-1694(85)90056-3

4 Harbaugh AW, Banta ER, Hill MC, McDonald MG (2000) MODFLOW-2000, The U.S. Geological
5 Survey modular ground-water model: User guide to modularization concepts and the ground-
6 water flow process. U.S. Geological Survey Open-File Report 00-92, 121 p.

7 Harvey CF, Gorelick SM (1995) : Mapping Hydraulic Conductivity: Sequential Conditioning with
8 Measurements of Solute Arrival Time, Hydraulic Head, and Local Conductivity. *Water Resour*
9 *Res* 31:1615–1626. doi: 10.1029/95WR00547

10 He X, Højberg AL, Jørgensen F, Refsgaard JC (2015) : Assessing hydrological model predictive
11 uncertainty using stochastically generated geological models. *Hydrol Process* 29:n/a–n/a. doi:
12 10.1002/hyp.10488

13 He X, Koch J, Sonnenborg TO, Jørgensen F, Schamper C, Christian Refsgaard J (2014) : Transition
14 probability-based stochastic geological modeling using airborne geophysical data and borehole
15 data. *Water Resour Res* 50:3147–3169. doi: 10.1002/2013WR014593

16 Heigold PC, Gilkeson RH, Cartwright K, Reed PC (1979) : Aquifer Transmissivity from Surficial
17 Electrical Methods. *Ground Water* 17:338–345. doi: 10.1111/j.1745-6584.1979.tb03326.x

18 Herckenrath D, Fiandaca G, Auken E, Bauer-Gottwein P (2013a) : Sequential and joint
19 hydrogeophysical inversion using a field-scale groundwater model with ERT and TDEM data.
20 *Hydrol Earth Syst Sci* 17:4043–4060. doi: 10.5194/hess-17-4043-2013

21 Herckenrath D, Odum N, Nenna V, Knight R, Auken E, Bauer-Gottwein P (2013b) : Calibrating a
22 salt water intrusion model with time-domain electromagnetic data. *Ground Water* 51 (3):385–
23 397. doi: 10.1111/j.1745-6584.2012.00974.x

24 Hill M (1998) : Methods and guidelines for effective model calibration; with application to
25 UCODE, a computer code for universal inverse modeling, and MODFLOWP, a computer code
26 for inverse modeling with MODFLOW. *Water-Resources Investig Rep* 98–4005. doi:
27 10.1061/40517(2000)18

28 Hinnell a. C, Ferré TP a., Vrugt J a., Huisman J a., Moysey S, Rings J, Kowalsky MB (2010) :
29 Improved extraction of hydrologic information from geophysical data through coupled
30 hydrogeophysical inversion. *Water Resour Res* 46:W00D40. doi: 10.1029/2008WR007060

31 Hubbard SS, Rubin Y (2000) : Hydrogeological parameter estimation using geophysical data: a
32 review of selected techniques. *J Contam Hydrol* 45:3–34. doi: 10.1016/S0169-7722(00)00117-
33 0

34 Hubbard SS, Rubin Y, Majer E (1999) : Spatial correlation structure estimation using geophysical
35 and hydrogeological data. *Water Resour Res* 35:1809–1825. doi: 10.1029/1999WR900040

36 Hyndman D., Tronicke J (2005) : Hydrogeophysical case studies at the local scale: the saturated
37 zone. In: Rubin Y, Hubbard SS (eds) *Hydrogeophysics*. Springer Netherlands, Dordrecht, pp
38 391–412

39 Hyndman DW, Harris JM, Gorelick SM (1994) : Coupled seismic and tracer test inversion for
40 aquifer property characterization. *Water Resour Res* 30:1965–1977. doi: 10.1029/94WR00950

41 Jørgensen F, Sandersen PBE (2006) : Buried and open tunnel valleys in Denmark—erosion beneath

multiple ice sheets. *Quat Sci Rev* 25:1339–1363.

Jørgensen F, Sandersen PBE, Auken E (2003) : Imaging buried Quaternary valleys using the transient electromagnetic method. *J Appl Geophys* 53:199–213. doi: 10.1016/j.jappgeo.2003.08.016

Koch K, Wenninger J, Uhlenbrook S, Bonell M (2009) : Joint interpretation of hydrological and geophysical data: electrical resistivity tomography results from a process hydrological research site in the Black Forest Mountains, Germany. *Hydrol Process* 23:1501–1513. doi: 10.1002/hyp.7275

Kowalsky MB, Finsterle S, Peterson J, Hubbard S, Rubin Y, Majer E, Ward A, Gee G (2005) : Estimation of field-scale soil hydraulic and dielectric parameters through joint inversion of GPR and hydrological data. *Water Resour Res* 41 (11):W11425. doi: 10.1029/2005WR004237

Lawrie KC, Carey H, Christensen NB, Clarke J, Lewis S, Ivkovic KM, Marshall SK (2012) : Evaluating the Role of Airborne Electromagnetics in Mapping Seawater Intrusion and Carbonate-Karstic Groundwater Systems in Australia. *Geoscience Australia, Canberra*, <http://dx.doi.org/10.11636/Record.2012.042>

Linde N, Finsterle S, Hubbard S (2006) : Inversion of tracer test data using tomographic constraints. *Water Resour Res* 42:n/a–n/a. doi: 10.1029/2004WR003806

Marker PA, Foged N, He X, Christiansen A V., Refsgaard JC, Auken E, Bauer-Gottwein P (2015) : Performance evaluation of groundwater model hydrostratigraphy from airborne electromagnetic data and lithological borehole logs. *Hydrol Earth Syst Sci* 19:3875–3890. doi: 10.5194/hess-19-3875-2015

Mazáč O, Kelly WE, Landa I (1985) : A hydrogeophysical model for relations between electrical and hydraulic properties of aquifers. *J Hydrol* 79:1–19.

Moore C, Doherty J (2006) : The cost of uniqueness in groundwater model calibration. *Adv Water Resour* 29:605–623. doi: 10.1016/j.advwatres.2005.07.003

Moysey S, Singha K, Knight R (2005) : A framework for inferring field-scale rock physics relationships through numerical simulation. *Geophys Res Lett* 32:L08304. doi: 10.1029/2004GL022152

Munday T, Gilfedder M, Taylor andrew r, Ibrahimi T, Ley-cooper Y, Cahill K, Smith S, Costar A (2015) : The role of airborne geophysics in facilitating long-term outback water solutions to support mining in South Australia. *Water - J Aust Water Assoc* 42:138–141.

Nowak W, Rubin Y, de Barros FPJ (2012) : A hypothesis-driven approach to optimize field campaigns. *Water Resour Res* 48:W06509. doi: 10.1029/2011WR011016

Oldenborger GA, Pugin AJ-M, Pullan SE (2013) : Airborne time-domain electromagnetics, electrical resistivity and seismic reflection for regional three-dimensional mapping and characterization of the Spiritwood Valley Aquifer, Manitoba, Canada. *Near Surf Geophys* 11:63–74. doi: 10.3997/1873-0604.2012023

Oliver DS, Reynolds AC, Liu N (2008) *Inverse Theory for Petroleum Reservoir Characterization and History Matching*. Cambridge University Press; University Printing House, Cambridge CB2 8BS, United Kingdom

Piotrowski JA (1994) : Tunnel-valley formation in northwest Germany—geology, mechanisms of

1 formation and subglacial bed conditions for the Bornhöved tunnel valley. *Sediment Geol*
2 89:107–141.

3 Pollock DW (1994) User 's Guide for MODPATH / MODPATH-PLOT , Version 3 : A particle
4 tracking post-processing package for MODFLOW , the U . S . Geological Survey finite-
5 difference ground-water flow model.

6 Purvance DT, Andricevic R (2000) : On the electrical-hydraulic conductivity correlation in aquifers.
7 *Water Resour Res* 36:2905–2913. doi: 10.1029/2000WR900165

8 Refsgaard JC, Auken E, Bamberg CA, Christensen BSB, Clausen T, Dalgaard E, Effersø F,
9 Ernstsens V, Gertz F, Hansen AL, He X, Jacobsen BH, Jensen KH, Jørgensen F, Jørgensen LF,
10 et al (2014) : Nitrate reduction in geologically heterogeneous catchments--a framework for
11 assessing the scale of predictive capability of hydrological models. *Sci Total Environ* 468-
12 469:1278–1288. doi: 10.1016/j.scitotenv.2013.07.042

13 Refsgaard JC, Christensen S, Sonnenborg TO, Seifert D, Højberg AL, Trolborg L (2012) : Review
14 of strategies for handling geological uncertainty in groundwater flow and transport modeling.
15 *Adv Water Resour* 36:36–50. doi: 10.1016/j.advwatres.2011.04.006

16 Reilly TE (2001) : Techniques of Water-Resources Investigations of the United States Geological
17 Survey, Book 3, Applications of Hydraulics. In: System And Boundary Conceptualization In
18 Ground-Water Flow Simulation. U.S. Geological Survey, Denver, CO, USA.,

19 Reilly TE, Harbaugh AW (2004) Guidelines for Evaluating Ground-Water Flow Models. U.S.
20 Geological Survey Scientific Investigations Report 2004-5038—Version 1.01

21 Revil A, Cathles LM (1999) : Permeability of shaly sands. *Water Resour Res* 35:651–662. doi:
22 10.1029/98WR02700

23 Sánchez M, Gunnink JL, van Baaren ES, Oude Essink GHP, Siemon B, Auken E, Elderhorst W, de
24 Louw PGB (2012) : Modelling climate change effects on a Dutch coastal groundwater system
25 using airborne electromagnetic measurements. *Hydrol Earth Syst Sci* 16:4499–4516. doi:
26 10.5194/hess-16-4499-2012

27 Sandersen PBE, Jørgensen F (2003) : Buried Quaternary valleys in western Denmark-occurrence
28 and inferred implications for groundwater resources and vulnerability. *J Appl Geophys*
29 53:229–248.

30 Seifert D, Sonnenborg TO, Scharling P, Hinsby K (2007) : Use of alternative conceptual models to
31 assess the impact of a buried valley on groundwater vulnerability. *Hydrogeol J* 16:659–674.
32 doi: 10.1007/s10040-007-0252-3

33 Singha K, Gorelick SM (2006) : Effects of spatially variable resolution on field-scale estimates of
34 tracer concentration from electrical inversions using Archie's law. *GEOPHYSICS* 71:G83–
35 G91. doi: 10.1190/1.2194900

36 Singha K, Moysey S (2006) : Accounting for spatially variable resolution in electrical resistivity
37 tomography through field-scale rock-physics relations. *GEOPHYSICS* 71:A25–A28. doi:
38 10.1190/1.2209753

39 Slater L (2007) : Near Surface Electrical Characterization of Hydraulic Conductivity: From
40 Petrophysical Properties to Aquifer Geometries—A Review. *Surv Geophys* 28:169–197. doi:
41 10.1007/s10712-007-9022-y

1 Steuer A, Siemon B, Eberle D (2008) : Airborne and Ground-based Electromagnetic Investigations
2 of the Freshwater Potential in the Tsunami-hit Area Sigli, Northern Sumatra. *J Environ Eng*
3 *Geophys* 13:39–48. doi: 10.2113/JEEG13.1.39

4 Tonkin M, Doherty J, Moore C (2007) : Efficient nonlinear predictive error variance for highly
5 parameterized models. *Water Resour Res* 43 (7):W07429. doi: 10.1029/2006WR005348

6 Urish DW (1981) : Electrical resistivity-hydraulic conductivity relationships in glacial outwash
7 aquifers. *Water Resour Res* 17:1401–1408. doi: 10.1029/WR017i005p01401

8 Vereecken H, Hubbard S, Binley A, Ferre T (2004) : Hydrogeophysics: An Introduction from the
9 Guest Editors. *Vadose Zo J* 3:1060–1062. doi: 10.2113/3.4.1060

10 Viezzoli A, Munday T, Auken E, Christiansen A V. (2010a) : Accurate quasi 3D versus practical
11 full 3D inversion of AEM data – the Bookpurnong case study. *Preview* 2010:23–31. doi:
12 10.1071/PVv2010n149p23

13 Viezzoli A, Tosi L, Teatini P, Silvestri S (2010b) : Surface water-groundwater exchange in
14 transitional coastal environments by airborne electromagnetics: The Venice Lagoon example.
15 *Geophys Res Lett* 37:L01402. doi: 10.1029/2009GL041572

16 Vilhelmsen TN, Behroozmand AA, Christensen S, Nielsen TH (2014) : Joint inversion of aquifer
17 test, MRS, and TEM data. *Water Resour Res* 50:3956–3975. doi: 10.1002/ 2013WR014679

18 West GF, Macnae JC (1991) *Physics of the Electromagnetic Induction Exploration Method*. In:
19 *Electromagnetic Methods in Applied Geophysics, Part A*, edited by Nabighian, M.N., Society
20 of Exploration Geophysicists, Tulsa.

21 Worthington PF (1975) : Quantitative geophysical investigations of granular aquifers. *Geophys*
22 *Surv* 2:313–366. doi: 10.1007/BF01447858

23 Wright HE (1973) *The Wisconsinan Stage*. Geological Society of America

24 Zhou H, Gómez-Hernández JJ, Li L (2014) : Inverse methods in hydrogeology: Evolution and
25 recent trends. *Adv Water Resour* 63:22–37. doi: 10.1016/j.advwatres.2013.10.014

26

1 Table 1. Geostatistical parameters for stochastic hydraulic field employed by the hydraulic
2 reference model. K is for hydraulic conductivity (ms^{-1}), R is for recharge (ms^{-1}) to the groundwater
3 model, and phi for porosity. μ is mean value to the log10 of K, a is range for small-scale variability, and
4 σ^2 the sill. The semivariograms are exponential.

Category	$\log_{10}(K)$			$\log_{10}(R)$			$\log_{10}(\phi)$		
	μ	a	σ^2	μ	a	σ^2	μ	a	σ^2
Gravel	-3.00	200.	0.0227	-8.20	200.	0.007752	-0.60	200.	0.000428
Sand	-4.00	200.	0.0227	-8.20	200.	0.007752	-0.60	200.	0.000428
Silt	-6.00	200.	0.0227	-8.60	200.	0.007752	-0.74	200.	0.000428
Clay	-7.00	50.	0.122	-8.82	50.	0.007752	-1.00	50.	0.000428

5

1 Table 2. Location and screened layer of boreholes with head measurements for model calibration

Location				Location				Location			
Borehole	X(m)	Y(m)	Screened layer	Borehole	X(m)	Y(m)	Screened layer	Borehole	X(m)	Y(m)	Screened layer
well_1	3692	6100	4	well_13	2375	4127	19	well_25	1460	2064	5
well_2	2375	5824	8	well_14	1155	3905	3	well_26	2506	2024	20
well_3	850	5662	4	well_15	2616	3720	20	well_27	2611	1990	18
well_4	4308	5602	3	well_16	2394	3637	19	well_28	2468	1750	20
well_5	2717	5570	6	well_17	4073	3565	4	well_29	2893	1741	9
well_6	1201	5550	4	well_18	2828	3498	12	well_30	4255	1632	4
well_7	2144	5477	8	well_19	2140	3421	10	well_31	2542	1482	20
well_8	2384	5006	16	well_20	2412	3184	20	well_32	2357	1047	5
well_9	2634	4830	14	well_21	665	3042	4	well_33	900	705	5
well_10	1174	4583	3	well_22	2311	2823	13	well_34	2838	649	11
well_11	4243	4506	4	well_23	2884	2379	6	well_35	2384	400	12
well_12	2708	4330	15	well_24	2421	2231	20				

2

1 Table 3. Different types of model predictions with and without a pumping well

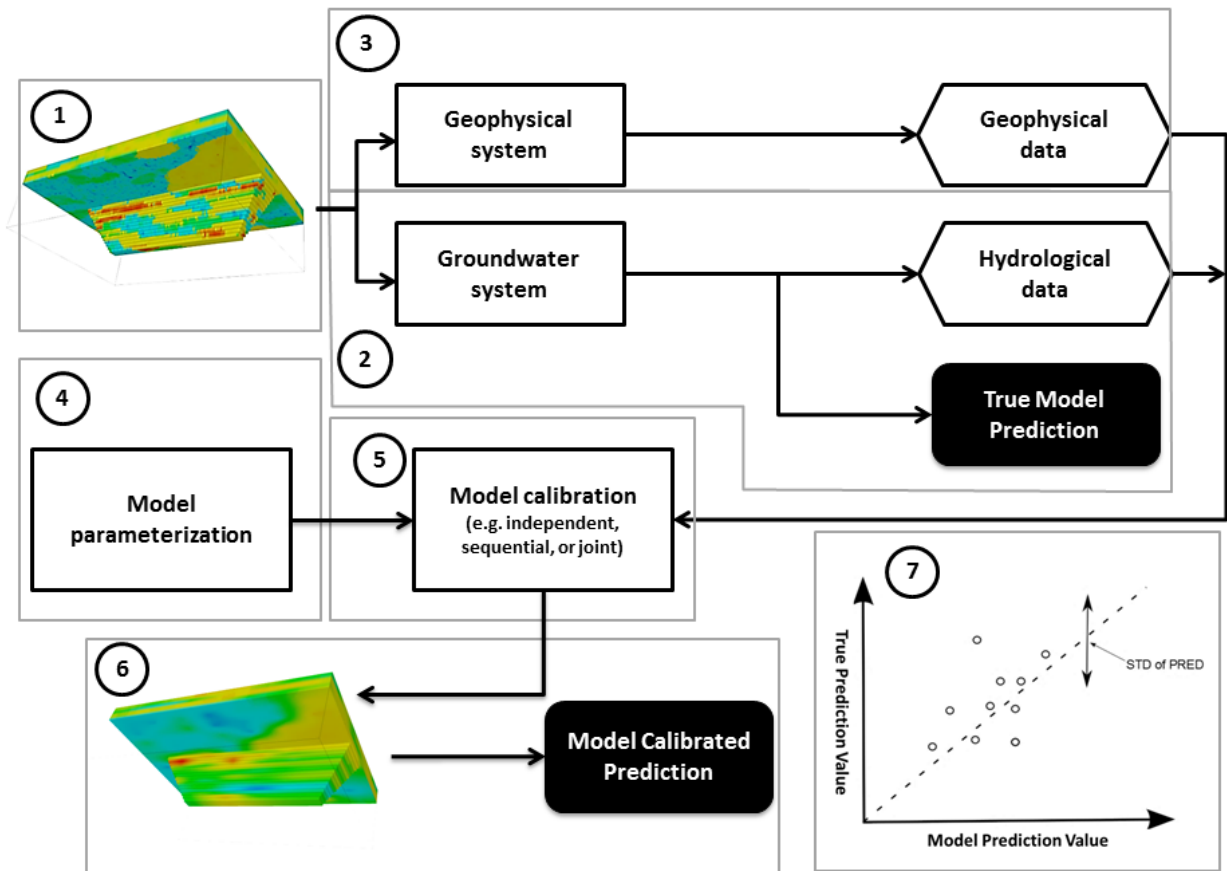
With pumping (the flow situation when calibrating)	Without pumping
1. Head at 10 locations 2. Recharge area 3. Average groundwater age	4. Head recovery at 10 locations 5. Particle travel time 6. Relative particle endpoint 7. River discharge

2

1 Table 4. Head and head recovery prediction points and screened layer

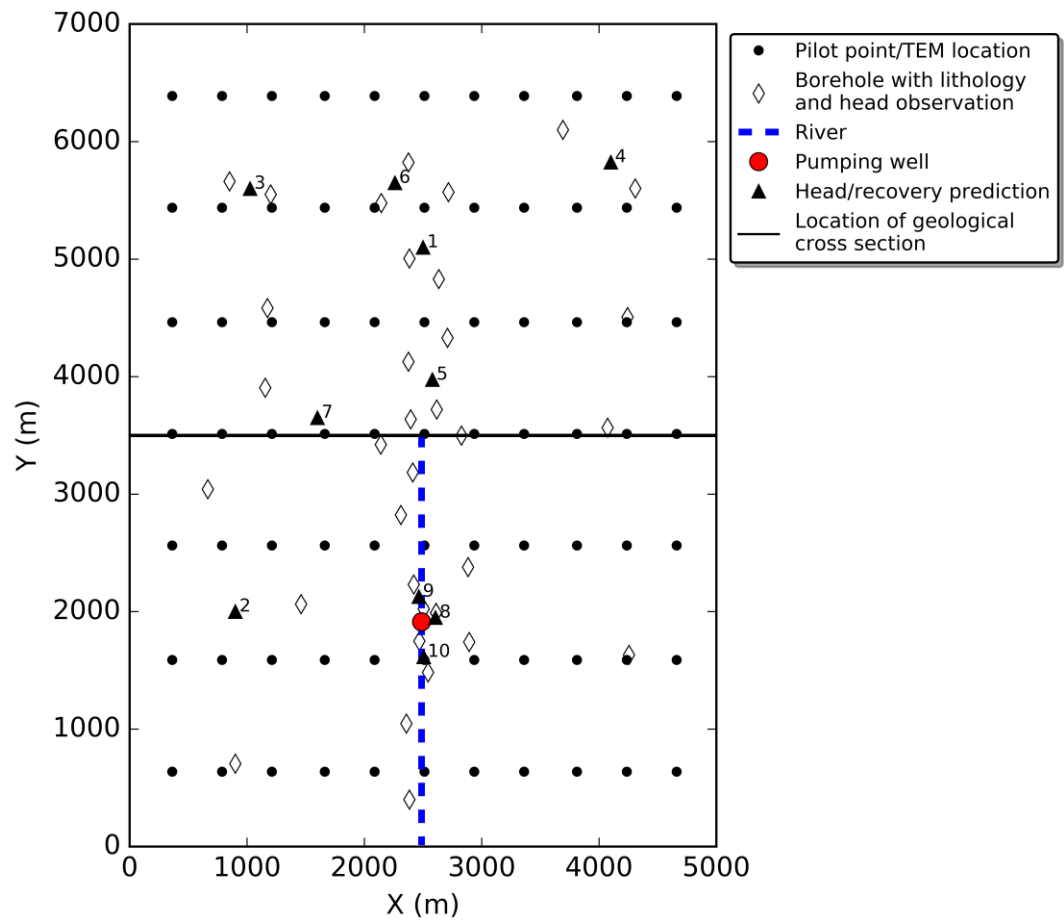
Location				Location			
Head pred. point	X(m)	Y(m)	Screen	Head pred. point	X(m)	Y(m)	Screen
pred_1	2500	5100	5	pred_6	2260	5650	5
pred_2	900	2000	4	pred_7	1600	3650	5
pred_3	1025	5600	5	pred_8	2606	1950	19
pred_4	4100	5825	4	pred_9	2464	2128	20
pred_5	2580	3975	15	pred_10	2505	1615	15

2



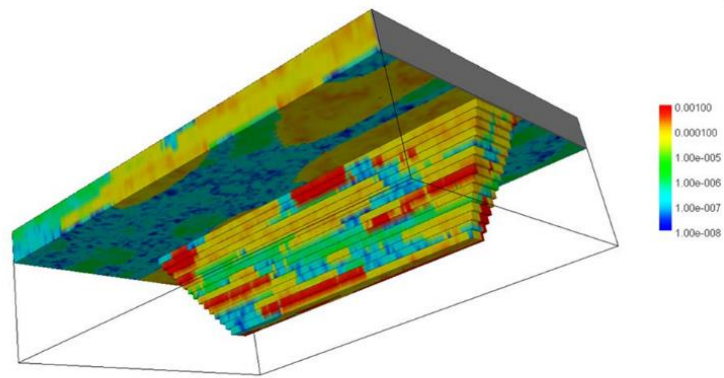
1

2 Figure 1: Workflow of the HYTEB. Each numbered dashed box marks a major step in the work
3 flow. In parts 1 and 5 the red, yellow, blue and green colors indicate different categories (types) of
4 geological deposits; color variation within each category (in part 6) indicates variation in hydraulic
5 conductivity



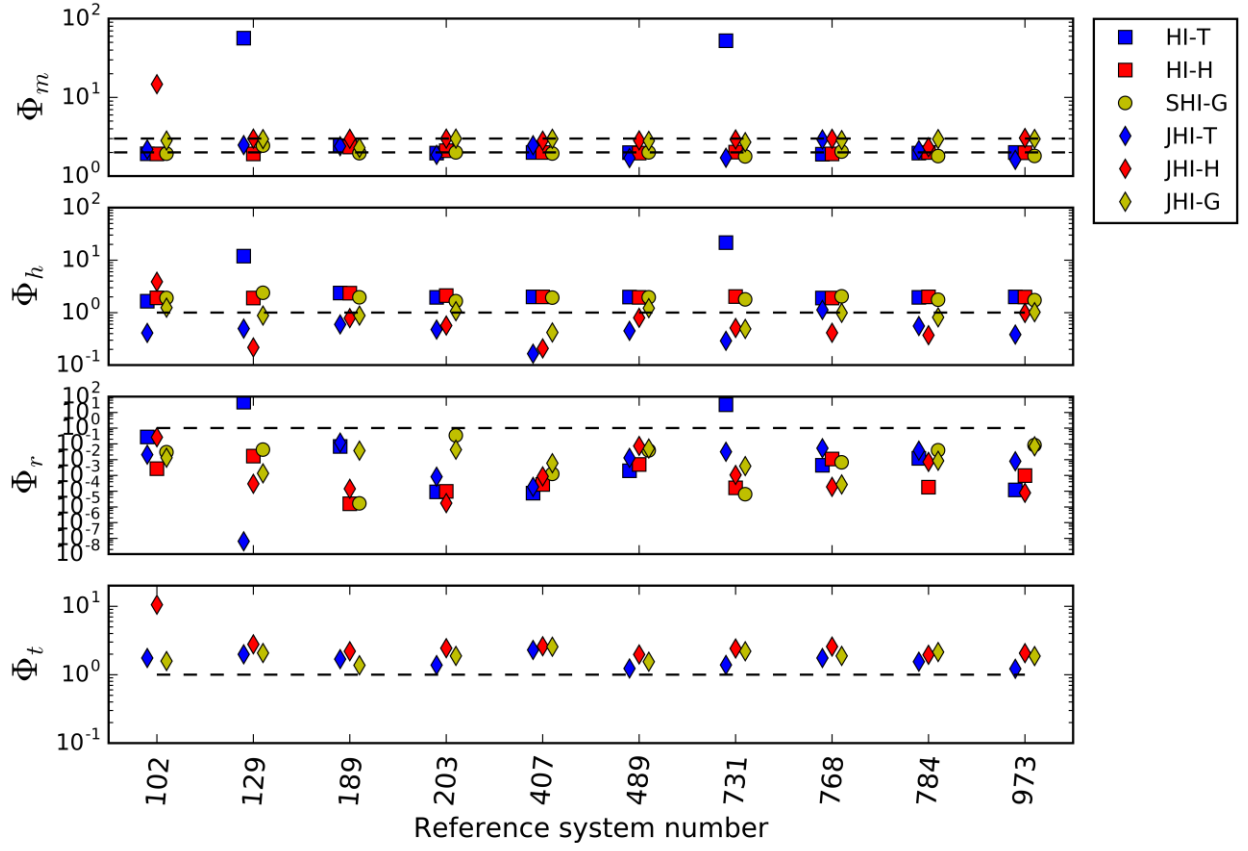
1

2 Figure 2: A map of locations of boreholes, a pumping well, geophysical data, pilot points,
3 predictions of interest and location of a geological cross-section. (The positions of the pilot points
4 and geophysical measurements are coincident.)



1

2 Figure 3. Hydraulic conductivity field for one of the model realizations. (Red shades are for gravel,
3 yellow for sand, green for silt, and cyan/blue for clay.)



1

2 Figure 4: Measurement objective function value obtained for the various groundwater model
3 calibration cases and for the 10 different system realizations. The two dashed lines in the top plot
4 indicate the target value for the various model calibrations: the upper dashed line is the target value
5 for the JHI, and the lower dashed line is the target value for HI and SHI. The dashed line in the
6 three lower plots similarly marks the respective target value.

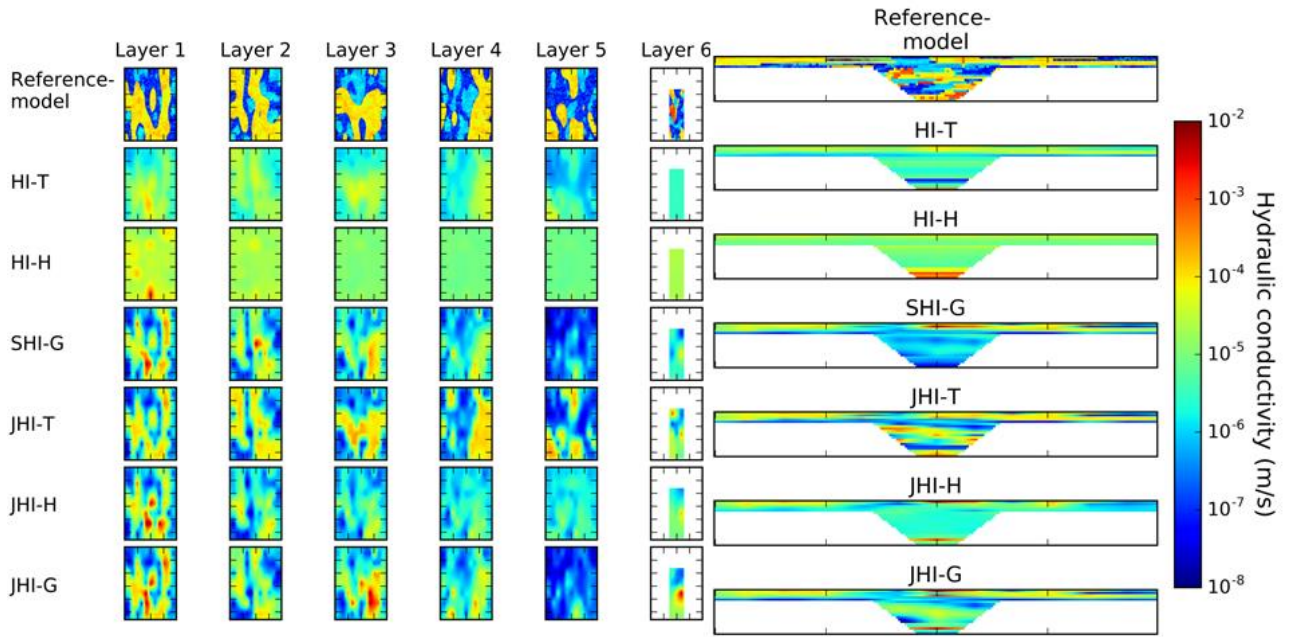
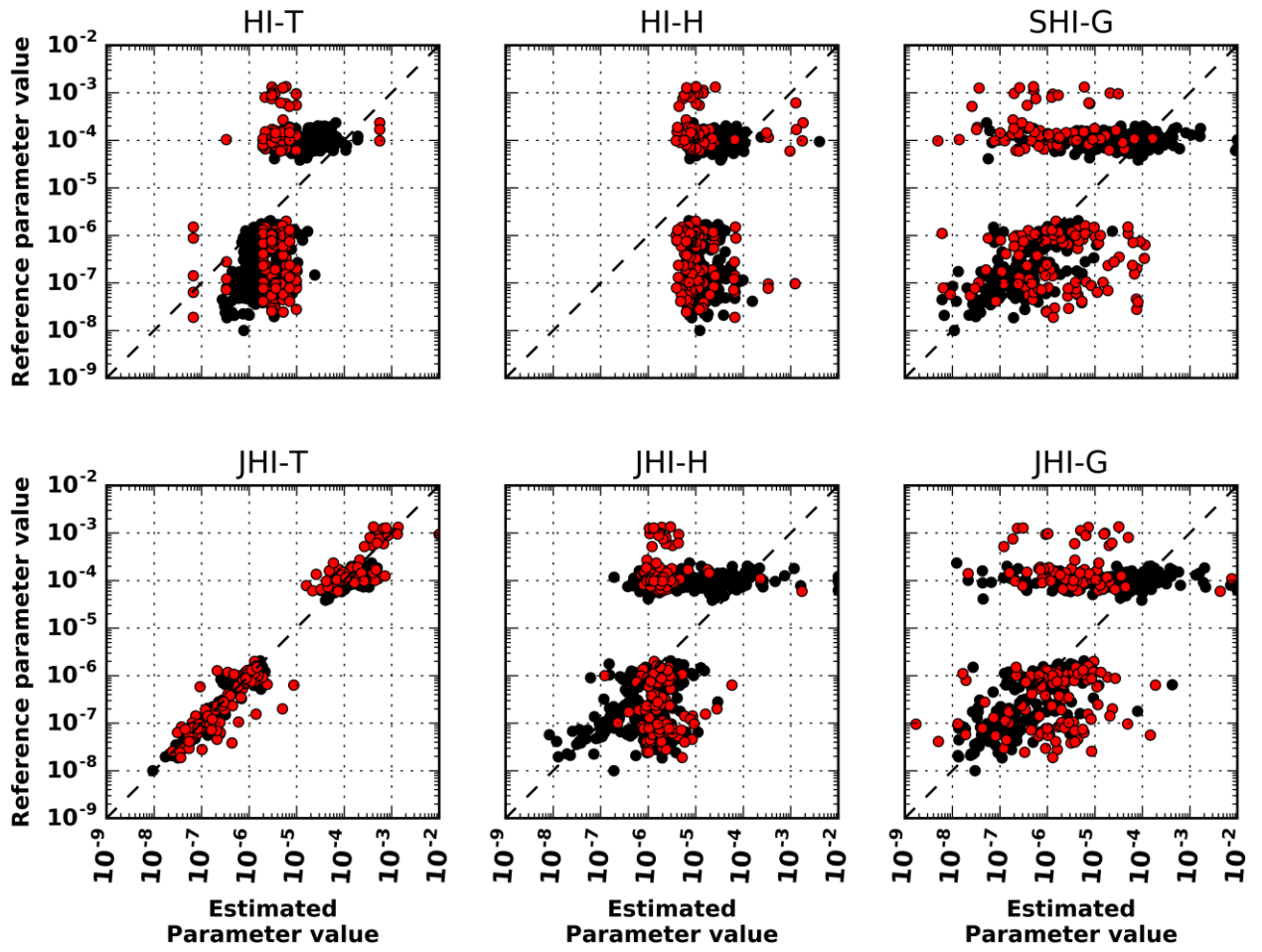
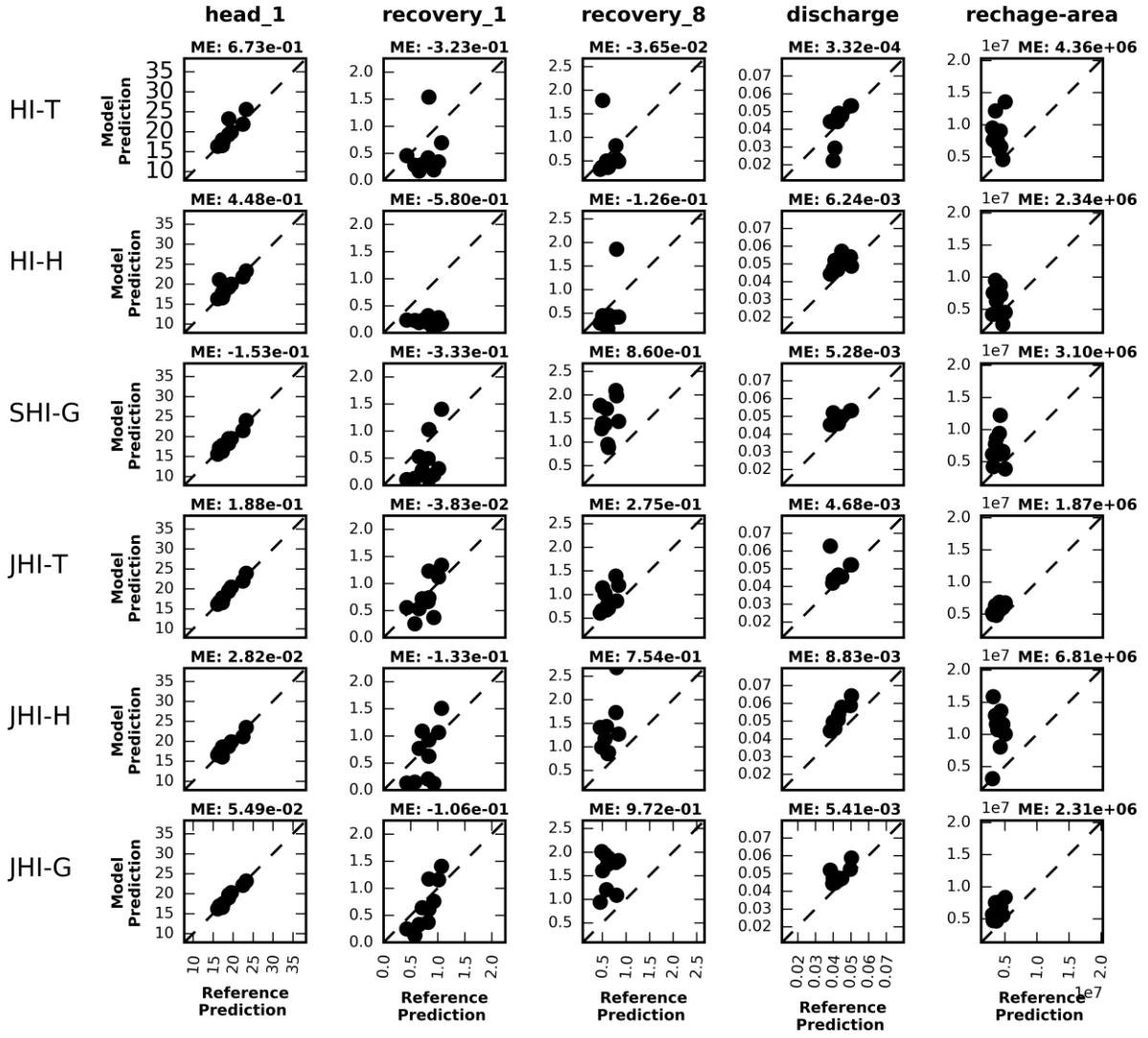


Figure 5: Reference and estimated hydraulic conductivity fields for model realization number 189: a) shows the fields for layers 1 to 6 ; b) shows the field along an east-west cross section in the middle of the domain.



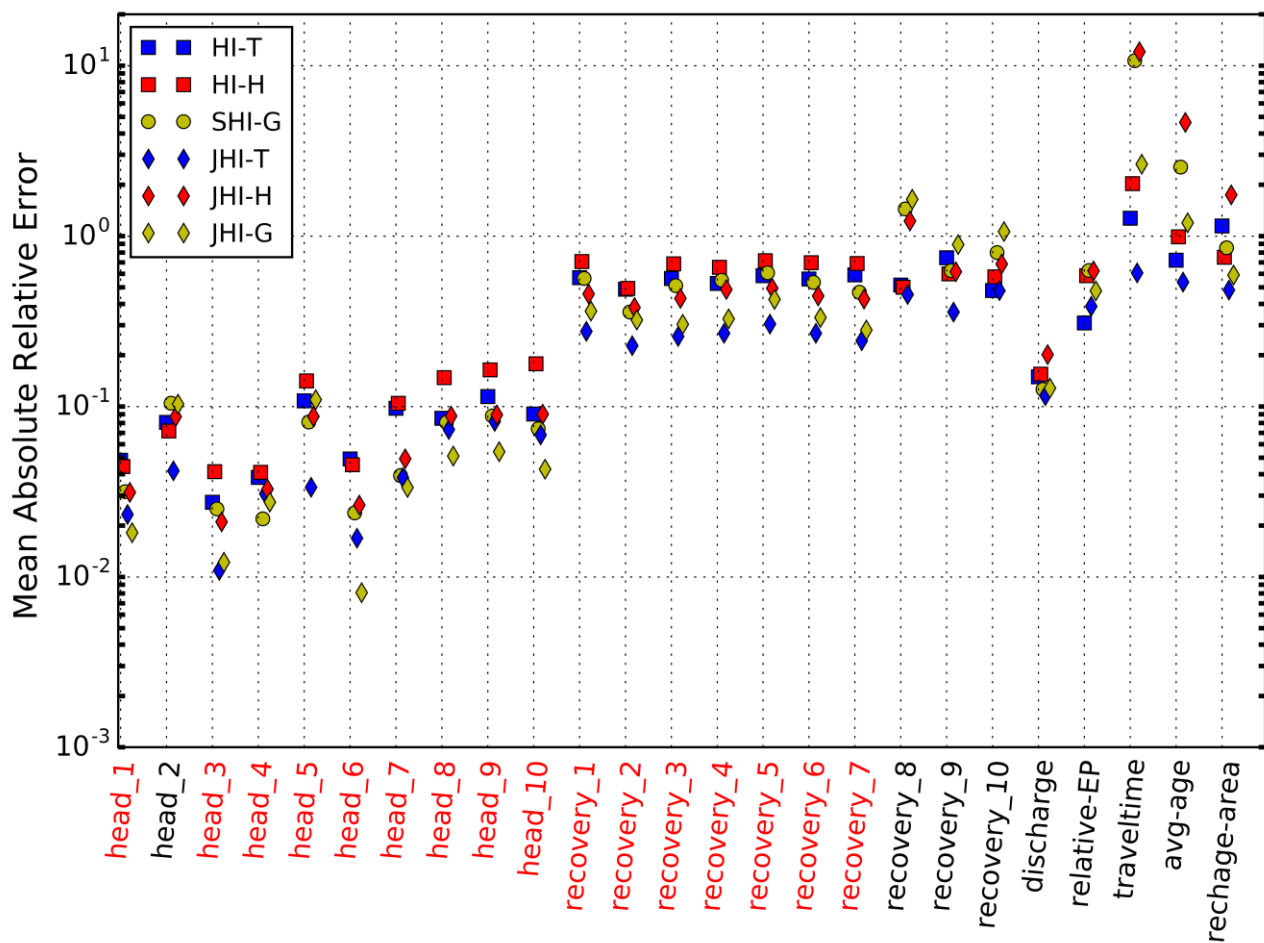
1

2 Figure 6. Pilot-point-by-pilot-point scatter plot of reference versus estimated hydraulic conductivity
3 for the six inversion runs. Black dots are estimated parameter values from the capping part of the
4 model, while the red dots are estimated parameter values within the buried valley.



1

2 Figure 7: Scatter plots of calibrated model prediction versus reference prediction for five
 3 predictions (explained in body text). Each plot shows results from ten system realizations.



1

2 Figure 8: Mean absolute relative prediction error calculated from the ten geological realization
3 results. The symbol type indicates the inversion approach and the symbol color indicates the initial
4 parameter values used when calibrating the groundwater model. Red labels at x-axis highlight
5 prediction errors that are reduced by using TEM data and TEM models for groundwater model
6 calibration.