

Basel, 22.04.2016

Revision of the paper "Subsurface flow mixing in coarse, braided river deposits"

Dear Mauro Giudici

We "polished the use of the English language" by implementing most of the recommendations of referee #1 and by letting a native speaker of English check the manuscript.

A few modifications of the manuscript were performed to address some of the comments of referee #2 about the "concepts of heterogeneity and hierarchy" we use.

Below are our specific comments to each reviewer.

Best regards,

Emanuel Huber (on behalf of P. Huggenberger)

Referee #1

The paper needs some polishing in the use of the English language.

We accepted all the recommendation of referee #1 (with a few exceptions). Furthermore, we let the manuscript be checked by a nativ speaker of English.

Referee #2

This is my second revision of this paper. In this second version of the manuscript the Authors have introduced some major changes. Firstly they define the concept of “advective mixing” accounting for the existing literature. Secondly they propose a visualization of advective mixing based on particle/streamline tracking and an estimate of particle deviation, particle divergence, and particle intertwining, discussing the interplay between hydraulic conductivity and hydraulic heads.

In its present form the paper suggests, more clearly than in the first draft, some very interesting ideas about how advective mixing is influenced by any kind of large-scale curved sedimentary feature, characterized by internal strong layered K contrasts, embedded within an homogeneous “matrix” of sediments with a planar anisotropy of K. In my opinion, within these boundaries (i.e. the study of a plausible conceptual geometry that could exist), the paper represents a very useful contribution that I recommend for publishing as it stands.

Nevertheless, I would like to feel free from any reviewer’s commitment and clarify the points of my first revision, that in my opinion are still inherent the second version of the paper. In both the versions the Authors never define the concepts of heterogeneity and hierarchy they use. In absence of these definitions, to understand the set-up of the “geologically realistic representation of high-permeable trough-fills” (lines 76-77) the reader must go through the whole text, combining many sparse statements throughout the paper. Doing so, it might be inferred that the scheme adopted by the Authors to describe the hierarchical arrangement of heterogeneity includes (in order of increasing rank) texture-structure-depositional element (see lines 47-49, 80-82, 92-96, 114-117, 126-130, 143-56, 299-300, for instance).

The hierarchy used to describe the sedimentary heterogeneity is now explicitly stated and a reference to this hierarchy of heterogeneity is provided (see lines 47-49). Moreover, the description of the sedimentary characteristics of the two considered depositional elements now refers to the adopted hierarchy of heterogeneity (see lines 55-59).

In my opinion, the components of hydrostratigraphic heterogeneity (i.e. texture, structure and composition, the latter being non influent on this study might be temporarily disregarded) should be considered separately. In this way the textural and structural components of the heterogeneity of the so called “background matrix” could be compared with the features of the troughs that have a comparable hierarchic order (external geometry and internal architecture on the side of the structural component, grain-size distribution, sorting and fabric, concerning the textural component).

With the modified description of the sedimentary characteristics of coarse, braided river deposits (see our previous comment), it should be now clearer that the layers of poorly-sorted gravel consists only of one texture (poorly-sorted gravel) and have a layered structure.

By assigning a planar anisotropy with a K_h/K_v ratio of 6 to the poorly sorted gravel outside the troughs (“to reflect the layered structure that hinders vertical flow”, line 156) an hydraulic behavior is

assigned a priori to the entire set of, let's say, non-trough fill facies associations, independently from the hierarchy and arrangement/orientation of structural vs. textural components of heterogeneity. Even if the Authors state several times that "the contribution of thin, high-permeable structures to advective mixing is expected to be negligible compared to that of the trough-fills" (for instance lines 291-292), they also discovered that "The vertical extent of the convex hull zone downstream from the trough fills as well as the vertical particle deviation are inversely proportional to the vertical anisotropy ($K_h=K_v$) of the poorly-sorted gravel texture (matrix) because a large vertical anisotropy of the poorly sorted gravel texture hampers vertical flow" (lines 266-269). I agree with this observation, that is very interesting indeed, also because it shows the importance of resolving the heterogeneity of the entire depositional system, without assigning "a priori" the behavior to a part of the association and trying to estimate the mutual influence of the heterogeneities of equivalent ranks. Which would have been the response of the Authors' model with a different orientation of anisotropy and/or with a variable K_h/K_v ratio through the sediments outside the troughs?

The horizontal layers of poorly-sorted gravel do not induce any significant vertical flow (the hydraulic head field is there rather horizontal). The observed advective mixing pattern is caused by the scour fill structure and the layers of poorly-sorted gravel only modify the extent of advective mixing but not the advective mixing pattern (the streamlines intertwining). For example, if the vertical anisotropy of the layers of poorly-sorted gravel is larger than 1, then they hampers the vertical flow induced by the scour fill structure. A variable vertical anisotropy of the layers of poorly-sorted gravel would not change the advective mixing pattern but locally the extent of the mixing. However, a variable horizontal anisotropy of the layers of poorly-sorted gravel could moderately modify the horizontal component of the advective mixing pattern (we say "moderately" because the possible angle of anisotropy is rather small with bell-shaped distribution, whose mode/mean corresponds to the valley orientation). Note that what referee #2 asks could also apply to the textures within the scour fills. The impact of spatial heterogeneity (in terms of hydraulic-conductivity tensor) of the open-framework gravel and bimodal gravel textures could be investigated. But this is not the objective of our study.

From this point of view, it is also worth mentioning that there is still some literature on heterogeneity of braided aquifers with scours that has not been considered by the Authors.

To our point of view, we cited all major publications that describe coarse, braided river deposits (lines 44-55). We don't see how additional references to the literature could improve the manuscript.

Another point of my concern was, and still is, the relation between the Tagliamento case history and the "geologically realistic representation of high-permeable trough-fills". I agree that the model proposed by the Authors is plausible and that somewhere some comparable aquifer heterogeneity exists. However, its relation with the Tagliamento case is still too loose to make it a true analogue of this kind of braided river case histories. In my opinion the Authors have generated a sort of second

order synthetic analogue, combining the high-order features obtained from the Tagliamento GPR image (the external shape of the scour-pools) with the low-order heterogeneities observed within the scour-pools at several different quarry sites (let me say that they produced something like the analogue of an analogue).

Strictly speaking, any representation/model of the subsurface is an **imperfect, synthetic analogue**. The degree of approximation/imperfection of the subsurface representation is an arbitrary choice motivated by the objective of the study. A discussion about the order of the analogue (e.g., "true analogue", "first-order/second-order analogue") does not contribute to the objective of the present study. Furthermore, we trust that the reader will be able to draw its own conclusion on the link between the synthetic model, the GPR data and the unknown reality.

Examples of this loose relation between the Tagliamento site and the synthetic model are sparse in the manuscript, like the statement at lines 120-121: "The GPR data indicate that the trough fills are elongated in the main flow direction (i.e., the valley orientation) with cross-tangential reflector." Neither in the main text, nor in Figures (i.e. Fig.2 and Fig.3) there is any indication about the setting of the investigated "structures" (either "depositional elements" or "textures" in other parts of the paper, see for instance lines 292-293 and 298-300). Please note that this is not just a formal point. In my opinion this is the starting point for a reliable generalization of the results of modeling, that should provide support to the very conclusive statements of the paper.

We modified lines 138-141 (of the revised version) to better show which information from the GPR data was used in the fitting process.

"The position and the size of several truncated ellipsoids was manually adjusted (i) to match the positions of the identified erosional lower-bounding surfaces and (ii) to respect the orientations of the internal structures of the trough fills that is visible on the GPR records."

Typewriting highlights

Line 31: "this phenomena", this phenomenon? these phenomena?

Line 264: "extend", extent?

Line 275: "45deg angle", 45° angle

Line 276: "Adjective", Advective

Line 289: "carries", quarries?

Done as suggested by referee #2

Subsurface flow mixing in coarse, braided river deposits

E. Huber and P. Huggenberger

Applied and Environmental Geology, University of Basel, Bernoullistrasse 32,
4056 Basel, Switzerland

Correspondence to: E. Huber (emanuel.huber@unibas.ch)

Abstract. Coarse, braided river deposits show a large hydraulic heterogeneity ~~at~~on the metre scale. One of the main depositional elements found in such deposits is a trough structure filled with alternating layers of bimodal gravel and open-framework gravel, the latter being highly permeable. ~~The~~However, the impact of such trough fills on ~~the~~ subsurface flow and advective mixing has not
5 drawn much attention. A geologically realistic model of trough fills is proposed and fitted to a limited number of ground-penetrating radar records surveyed on the river bed of the Tagliamento River (northeast Italy). A steady-state, saturated subsurface flow simulation is performed on the small-scale, high-resolution, synthetic model (size: 75 m × 80 m × 9 m). Advective mixing (i.e., streamline intertwining) is visualised and quantified based on particle tracking. The results indicate ~~a~~ strong
10 advective mixing as well as a large flow deviation induced by the asymmetry of the trough fills with regard to the main flow direction~~that results in~~. The flow deviation induces a partial, large-scale rotational effect. These findings depict possible advective mixing found in natural ~~environment~~
environments and can guide the interpretation of ecological processes such as in the hyporheic zone.

1 Introduction

15 The subsurface heterogeneity at the 1 to 100 m scale can induce significant subsurface flow mixing that is relevant for aquifer remediation or drinking water extraction near a river or a contaminated area (e.g., Kitanidis, 1994; Mattle et al., 2001; Mays and Neupauer, 2012; Cirpka et al., 2015). Subsurface flow mixing is generally decomposed into an advective transport process combined with diffusion/dispersion (e.g., Mays and Neupauer, 2012). The advective transport process
20 is best visualised with streamlines or streamtubes. Two-dimensional and three-dimensional flows exhibit a different streamline rearrangement when flowing through heterogeneities (Steward, 1998). ~~Two-dimensional~~Whereas two-dimensional, divergence-free flows locally deform the streamline geometry~~whereas~~, three-dimensional, non-axisymmetric flows permanently rearrange their streamtubes by redistributing the fluid within the subsurface (Steward, 1998; Janković et al., 2009). Janković
25 et al. (2009) illustrated this difference by comparing two-dimensional and three-dimensional flows through an isolated, high-permeable subsurface structure whose rotational axis was not aligned with

the mean flow direction (i.e., non-axisymmetric flows). For two-dimensional flows, the distance between the streamlines at a large distance upstream and downstream from the high-permeable structure remains the same. ~~On the contrary~~In contrast, the streamlines of three-dimensional flows are permanently deformed downstream from the high-permeable subsurface structure resulting in a complex intertwining of streamlines. Janković et al. (2009) coined the phrase *advective mixing* to describe ~~this~~these phenomena. Cirpka et al. (2015) identified three advective mixing phenomena that enhance solute mixing: (1i) streamline focusing/defocusing, (2ii) depth-dependent streamline meandering (i.e., streamline deviation), and (3iii) secondary motion consisting in persistent twisting, folding, and intertwining of streamlines. Chiogna et al. (2015) demonstrated the occurrence of macroscopic helical flow in subsurface flow simulations where the hydraulic conductivity field was heterogeneous and locally isotropic. ~~Advective mixing plays an important role~~Despite the importance of advective mixing in solute mixing processes by enhancing diffusion/dispersion (Hemker et al., 2004; Janković et al., 2009; Cirpka et al., 2015; Ye et al., 2015)~~but~~, volumetric concentration measurements on the field ~~do not allow to~~cannot distinguish between advective mixing and dispersion/diffusion (Janković et al., 2009).

This study is part of a research project on the heterogeneity characterisation of coarse, braided river deposits ~~at~~on different scales. ~~The focus is here~~We focus on one important aspect of heterogeneity, namely its influence on advective mixing. Coarse, braided river deposits are highly heterogeneous in terms of hydraulic properties (e.g., Jussel et al., 1994a; Anderson et al., 1999; Lunt et al., 2004) and make up many ~~of the~~ groundwater reservoirs worldwide (Huggenberger and Aigner, 1999; Klingbeil et al., 1999; Bayer et al., 2011) and more than two thirds of the exploited aquifers in Switzerland (Huggenberger, 1993). In this study the sedimentary heterogeneity is characterised following the hierarchy proposed by (Huggenberger and Regli, 2006) . In order of increasing size, this hierarchy consists of sedimentary textures, sedimentary structures, and depositional elements. As schematically represented on Fig. 1, coarse, braided river deposits are ~~characterised~~composed by two main depositional elements, ~~namely horizontal to sub-horizontal layers of poorly-sorted gravel remnants of gravel sheets (Huber and Huggenberger, 2015)~~ and trough fills ~~characterised by~~with clear-cut erosional lower-bounding surfaces (e.g., Siegenthaler and Huggenberger, 1993; Jussel et al., 1994a; Beres et al., 1995, 1999; Rauber et al., 1998; Stauffer and Rauber, 1998; Teutsch et al., 1998; Anderson et al., 1999; Klingbeil et al., 1999; Whittaker and Teutsch, 1999; Heinz and Aigner, 2003; Heinz et al., 2003; Huggenberger and Regli, 2006; Bayer et al., 2011). The ~~fills generally consist~~sedimentary structure of the remnants of gravel sheets consists of horizontal to sub-horizontal layers with a poorly-sorted gravel texture. The sedimentary structure of the fills generally consists of alternating open-framework–bimodal gravel couplet cross-beds, ~~but~~although fills consisting of poorly-sorted cross-beds or of interfingering crossbeds of poorly-sorted gravel and sand are not uncommon (e.g., Siegenthaler and Huggenberger, 1993). Other less frequent sedimentary structures and depositional elements are described in the references above. Because the permeability contrast

between the open-framework gravel texture and the other textures (bimodal gravel, poorly-sorted gravel) is up to 3 orders of magnitude (e.g., Jussel et al., 1994a, Table 1), the spatial distribution of the open-framework gravel texture is expected to strongly influence the subsurface flow field and therefore to enhance advective mixing (Stauffer, 2007).

Based on observations of hydrofacies or sedimentary structures, several studies developed hydrogeological models of coarse, braided river deposits to investigate subsurface transport. Most of these studies assessed either macro dispersion processes (e.g., Jussel et al., 1994b; Stauffer and Rauber, 1998), sorption processes (e.g., Rauber et al., 1998; Teutsch et al., 1998) or particle concentrations (e.g., Anderson et al., 1999; Heinz et al., 2003), mainly ~~analysing through the analysis of~~ break-through curves. Stauffer (2007) modelled a trough fill of alternating open-framework–bimodal gravel couplets by a highly-permeable rectangular cuboid with an anisotropic hydraulic conductivity tensor. He quantified the subsurface flow disturbance downstream ~~from of~~ the cuboid embedded in a homogeneous background matrix as a function of the angle of anisotropy of the hydraulic conductivity tensor. He noticed that “the disturbance manifests itself by a distinct distortion of the streamtubes. Laterally, the influenced width is about 2.5 times the width of the [cuboid] for the considered case. Vertically, this influenced width makes up about 10 times the thickness of the [cuboid]” (Stauffer, 2007).

To the best of our knowledge the influence of trough fills on advective mixing has not been investigated with the exception of the work of Stauffer (2007) in which the complex trough fill structure was reduced to a simple cuboid with an homogeneous anisotropic conductivity.

~~The aim of the present work is~~ The present work aims to assess the influence of a *geologically realistic* representation of high-permeable trough fills on advective mixing.

The flow simulation is performed on a synthetic, conceptual model derived from ground-penetrating radar (GPR) data recorded over a small area (about 100 m × 50 m) ~~on of~~ the river bed of the coarse, braided Tagliamento river (northeast Italy). First, the sedimentary structure of two overlapping trough fills is inferred from three GPR profiles, one 53 m long approximately parallel to the main flow direction and two 7.5 and 10 m long approximately perpendicular to the main flow direction. Simple geometric objects corresponding to each sedimentary structure are manually fitted to the interpreted GPR records. Then, a high-resolution, steady-state, three-dimensional groundwater model is set up based on hydraulic properties borrowed from the literature. Finally, advective mixing is investigated with particle tracking.

2 Methods

2.1 Ground-penetrating radar data acquisition

~~The project includes a collection of~~ objective of the project was to quantify the proportion of depositional elements in the sedimentary deposits. Because the erosional lower bounding surfaces of

~~trough-shaped depositional elements can be followed over large distances (> 25 m).~~ fourteen widely spaced GPR lines (about 25 m line spacing on average) ~~recorded~~ were acquired in a 100 m × 200 m large area on the river bed of the coarse, braided Tagliamento River downstream from the Cimano bridge (46° 12' 37.945" N, 13° 0' 50.165" E; WGS1984). The ~~objective of the project was to quantify the proportion of depositional elements in the sedimentary deposits. The interpretation of the GPR data showed that the reflectors corresponding to the erosional lower bounding surfaces of trough shaped depositional elements can be followed over large distances (> 25). Therefore, the chosen spatial survey density was sufficient to accomplish the project task.~~ The GPR data were recorded with a PulseEkko Pro GPR system (Sensors & Software Inc., Mississauga, Canada) with 100 MHz antennae. The nominal spatial resolution length of the 100 MHz antennae is of the order of 0.3 m (Bridge, 2009). The topography of the GPR profiles was surveyed with a Total Station.

110 The GPR data were processed as follows:

- Time-zero adjustment.
- Direct current-offset (DC-offset) removal based on samples before time-zero.
- Dewowing of each trace by removal of the trend estimated with a Hampel filter (Pearson, 2002).
- 115 – A spherical and exponential gain was applied to compensate for geometric spreading and attenuation (Kruse and Jol, 2003; Grimm et al., 2006). This gain preserves the relative amplitudes.
- Low-pass filtering to remove the high (noisy) frequencies (corner frequencies at 150–200 MHz).
- 120 – Time-to-depth conversion with a constant velocity of 0.1 m ns⁻¹ that leads to results that are sufficiently accurate for the purpose of this study. The velocity was estimated from previous common-mid point surveys recorded in the same area.

2.2 Ground-penetrating radar data interpretation

The interpretation of the GPR profiles is based on (i) ~~the~~ continuity of the dominant reflectors within and between the profiles, (ii) ~~the~~ differences of reflection patterns, and (iii) ~~the~~ angular unconformity between the reflectors that can indicate an erosion surface or the superposition of two sedimentary structures with different sedimentary textures (Beres et al., 1995, 1999).

Three GPR profiles image three relatively well-preserved, overlapping trough fill structures that are identified by their erosional lower-bounding surfaces. Fig. 2 shows the three GPR profiles as well as their interpretation. The GPR data indicate that the trough fills are elongated in the main flow direction (i.e., the valley orientation) with cross-tangential reflector. The GPR profile "xline1" (perpendicular to the mean flow direction; Fig. 4A) displays asymmetrical circular-arc reflectors

that are almost symmetrical on the profile "xline2". Most of the older trough (represented in green in Fig. 2) is eroded by the younger troughs (represented in blue and red in Fig. 2).

135 2.3 Subsurface structural modelling

The observed reflections are consistent with the results of many studies on coarse deposits that compared GPR reflections with sedimentological structures of outcrop exposures (e.g., Huggenberger, 1993; Bayer et al., 2011). Because only three GPR records image the trough fills, a conceptual representation of the sedimentary structure is needed to infer the three-dimensional structure of the imaged trough fills at a high resolution. The approach proposed by Siegenthaler and Huggenberger (1993) is adopted. Siegenthaler and Huggenberger (1993) hypothesised that trough fills originate from confluence scours that can migrate. Therefore, they suggested to simulate the internal structure of the trough fills ~~through-based on~~ geometric considerations, i.e., by several shifted half-ellipsoids representing the trough migration (see also Best and Rhoads, 2008). In this study, the trough fills are represented by truncated ellipsoids. The position and the size of several truncated ellipsoids was manually adjusted (i) to match the ~~GPR reflectors of the three identified trough fills. positions of the identified erosional lower-bounding surfaces and (ii) to respect the orientations of the internal structures of the trough fills that is visible on the GPR records.~~ A top view of the resulting subsurface structural model is shown in Fig. 3. The GPR profiles are compared to vertical sections of the structural model as well as to vertical gravel pit exposures of coarse, braided river deposits located in northeast Switzerland (Fig. 4).

2.4 Hydrogeological model

The three-dimensional model grid has a size of $75\text{ m} \times 80\text{ m} \times 9\text{ m}$ and a resolution of $0.5\text{ m} \times 0.5\text{ m} \times 0.1\text{ m}$. The truncated ellipsoids are ~~discretised into the model grid between the 7 and the 31 layers~~ (i.e., ~~located~~ between 0.6 and 3.1 m below the surface). Because of the close correspondence of the GPR reflection patterns and of the sorting process with the observations made by Siegenthaler and Huggenberger (1993); Huggenberger (1993); Beres et al. (1995, 1999); Heinz et al. (2003), we assume the hydraulic properties of the different types of gravel texture to be in the same order of magnitude as those estimated from measurements on disturbed and undisturbed samples in Quaternary coarse gravel deposits in northeast Switzerland (Jussel et al., 1994a). The hydraulic properties of the poorly-sorted gravel (see Table 1) are attributed to the background matrix, while the hydraulic properties of the bimodal and open-framework gravel (Table 1) are alternatively assigned to the voxels located between two consecutive truncated ellipsoids, following the conceptual model shown in Fig. 1. For each voxel the hydraulic conductivities are drawn from log-normal distributions neglecting any spatial correlation (they are identically and independently distributed). The resulting conductivity field is displayed in Fig. 5. The hydraulic conductivity tensors of the bimodal and open-framework gravel are both isotropic. A vertical anisotropy of the hydraulic conductiv-

ity ($K_h/K_v = 6$) is assigned to the poorly-sorted gravel texture to reflect the layered structure that hinders vertical flow.

170 All ~~the~~ model boundaries are set as a no-flow boundary with the exception of the inflow ($x = 0$ m) and outflow ($x = 75$ m) ~~model~~ faces where constant head boundary conditions are specified (Fig. 5). The gradient between the inflow and the outflow model faces is 0.03 and corresponds to a locally large hydraulic gradient as found in situations where ~~a~~ groundwater-surface water ~~interaction occurs~~ interactions occur. The saturated, ~~steady~~ steady-state subsurface flow simulation is performed
175 with MODFLOW ~~(?)~~ (Harbaugh, 2005).

2.5 Advective mixing quantification

The advective flow is simulated with the particle-tracking ~~scheme code~~ MODPATH (Pollock, 2012). One particle per cell is set on the model inflow face and the position of the particles travelling through the model is recorded. The resulting streamlines combined with a judicious color scheme allow for
180 visualisation of ~~the~~ advective mixing. Furthermore, we quantify ~~the~~ advective mixing by evaluating ~~between the inflow face and the outflow face~~ (i) particle deviation, (ii) particle divergence, and (iii) particle intertwining between the inflow face and the outflow face.

~~Partiele~~ The particle deviation (Δ) is ~~equal to~~ the transverse distance between the particle ~~position positions~~ on the inflow face (y_i, z_i) and on the outflow face (y_o, z_o):

$$185 \quad \Delta = \sqrt{(y_i - y_o)^2 + (z_i - z_o)^2} \quad (1)$$

For each cells of the outflow face we compute the median particle deviation from all ~~the particle particles~~ within the cell.

The particle divergence indicates how far a particle flowed away from its ~~eights particle eight~~ particle inflow neighbours. For each particle we compute the absolute difference between (i) the
190 median distance between the particle and its eight neighbours on the inflow face and (ii) the median distance between the particle and its eight neighbours from the inflow face on the outflow face.

The neighbours of a particle on the inflow face can be different from the neighbours of the same particle on the outflow face. Therefore, the particle intertwining is estimated for each particle by the proportion of ~~the four inflow neighbour a particle still has as its four inflow that are still its~~
195 neighbours on the outflow face. In order to ~~really include all the~~ include all neighbour particles, the neighbours on the outflow face are defined as the first and second order neighbours of the Delaunay triangles, ~~(i.e., the particles that are~~ connected to the considered ~~partieles~~ particle through an edge or two edges of the Delaunay triangles.

3 Results and discussion

200 3.1 Hydraulic heads

~~Similarly~~ Similar to a high-permeable homogeneous structure, the overlapping trough fills significantly influence the hydraulic head distribution – vertically (Fig. 5b) and horizontally (Fig. 6) – inducing an asymmetric flow focusing and defocusing (compare with Fig. 7). Fig. 6 shows ~~on~~ within longitudinal cross sections how the vertical distribution of the hydraulic heads is significantly influenced by the trough fills: the hydraulic gradient is oriented upward, toward the trough fills at their upstream end and downward, ~~outward~~ away from the trough fills at their downstream end. However, ~~this pattern is never symmetric~~ even in the ~~middle~~ center of the model this pattern is never symmetric (Fig. 6b) because of (i) ~~the~~ asymmetry of the internal structure of the trough fills and (ii) ~~the~~ non-alignment of the trough fills with the mean flow direction. The asymmetry of the vertical hydraulic head distribution becomes more asymmetric close to the lateral model boundaries. The upward gradient upstream from the trough fills slowly disappears toward the right model boundary (looking downstream; Fig. 6a), while the downward gradient downstream from the trough fills slowly disappears toward the left model boundary (Fig. 6c). The hydraulic gradient within the trough fills is very small (about 0.002).

215 The asymmetry of the three-dimensional hydraulic head distribution causes a permanent rearrangement of the streamlines. Therefore, in addition to a flow focusing and defocusing effect, persistent streamline deformations and rearrangements are expected.

3.2 Particle tracking

Fig. 8 shows the position of the particles on the model outflow face coloured by their initial y - and z -coordinates on the inflow face. The convex hull of the particles on the outflow face that flowed through the trough fills as well as the shape of the trough fills projected on the outflow face are also represented. The size of the projected trough fill shape and of the convex hull are about $38.5\text{ m} \times 2.2\text{ m}$ and $52.0\text{ m} \times 6.7\text{ m}$, respectively. On the inflow face, the shape of the convex hull of the particles that flow through the trough fills (not shown) is up to a lateral shift of 8 m nearly identical to the convex hull shown in Fig. 8. This could indicate a similar flow focusing and defocusing effect combined with a lateral flow deviation. However, a notable particle deviation is clearly visible inside and outside the convex hull (see also Fig. 9). The median particle deviation is 4.0 m whereas the maximum is 28.1 m. The particle deviation outside the convex hull is very small ~~at~~ with the exception of some particles below the convex hull (up to 12 m). Even if small, the particle deviation outside the convex hull is smoothly varying because these particles flowed through the low heterogeneous poorly-sorted gravel. The largest particle deviations are observed ~~in~~ within the convex hull. There, the particle deviations are irregular in amplitude and direction but still show an horizontal trend as expected from the orientation of the trough fills. Note that the asymmetry of the trough fills causes a partial, large-scale rotation of the particles.

235 The largest median distances between each particle and its eight inflow neighbours on the outflow face are found within the convex hull (Fig. 10a), where most of the particles lay at least four times

farther away from their inflow neighbours as on the inflow face. The median distance between a particle and its eight neighbours is 0.1 m on the inflow face and less than 2% of the particles are more than 10 m away from their neighbours. The largest distance are found in the central part of the convex hull that is associated to the two younger trough fills (trough fills 2 and 3 in Figs. 2 and 3. More than the half of the particles outside the convex hull lay closer to their inflow neighbours on the outflow face. The analysis of the remaining neighbours (Fig. 10b) attests a strong particle intertwining as indicated by Fig. 10a. Indeed, about 70% of the particles in the convex hull on the outflow face are no more surrounded by their four initial neighbours from the inflow face.

245 3.3 Advective mixing mechanism

For ~~the sake of~~ clarity, Fig. 11 shows only ~~the paths of few particles~~ a few particle paths that cross the trough fills. The particles upstream from the trough fills are attracted by the highly-permeable layers of the open-framework gravel. Shortly before the particles enter the trough fills, some of them show a strongly curved path toward the trough fills. The particles that enter the open-framework gravel layers ~~flow rather~~ move horizontally within these layers until they dip upward. A closer look on Fig. 11 reveals series of sharp vertical zigzags of the particle paths, predominantly at the downstream end of the trough fills where the layers of open-framework gravel dip upward. These zigzags occur where the particles tightly jump vertically between two adjacent layers of open-framework gravel.

Fig. 12 displays an enlarged view of a vertical section of the model along the main flow direction that shows the layers of open-framework gravels as well as the vertical hydraulic head distribution. The arrows represent the volumetric flux (Darcy's flux) vectors projected on the vertical section for each cells of the open-framework layers. Note that the hydraulic conductivity tensor within the trough fills is isotropic. Therefore, the volumetric flux along each dimension of the Cartesian coordinate system is proportional the hydraulic conductivity at the cell interface times the hydraulic gradient along the same dimension. Fig. 12 reveals a complex spatial distribution of the volumetric flux that appears rather chaotic in the upward-dipping part. However, we observe that four of the upward-dipping layers of open-framework present a similar pattern: although very small in amplitude, the volumetric flux of the lower cells of these layers tend to point downward whereas in the upper cells the flux tend to point upward. The vertical position of the particles within the open-framework gravel layers is therefore critical because two closely spaced particles can flow in opposite direction. As a consequence, the volumetric flux pointing downward lets some of the ascending particles exit the trough fill earlier (see Fig. 11). In a similar way, two closely-spaced particles do not enter the trough fills at the same position and therefore follow different paths within the trough fills. Small spatial variations of the volumetric flux (not only vertically but also horizontally) can drive the particles far away from each ~~others~~ other (Fig. 11). This advective mixing illustrates the importance of the interplay between the hydraulic head field and the spatially distributed hydraulic conductivity that results in an heterogeneous volumetric flux distribution within the trough fills.

In consequence, the transport process through the trough fills can be viewed as a chaotic process where the particle positions on the outflow face ~~sensitively~~ depends on the initial particle positions on the inflow face (Neupauer et al., 2014). Note that the same effect is obtained with homogeneous hydraulic conductivity for each sedimentary texture. Spatial random hydraulic conductivity values increase advective mixing at a level that is negligible compared with the advective mixing resulting from the three-dimensional arrangement of the different textures.

~~A brief investigation of the influence on some parameters~~ Investigation on the influence of hydraulic gradient, hydraulic conductivity of the open-framework gravel, vertical anisotropy, and trough fill orientation on advective mixing showed the following: (i) ~~The~~ the decrease of the hydraulic gradient significantly increases the lateral deviation of the particles; (ii) ~~The~~ extend ~~the~~ extent of the convex hull of the particles that crossed the trough fills, the particle deviation and mixing increase with increasing hydraulic conductivity of the open-framework gravel; (iii) ~~The~~ vertical ~~extend~~ the vertical extent of the convex hull zone downstream ~~from~~ of the trough fills as well as the vertical particle deviation are inversely proportional to the vertical anisotropy (K_h/K_v) of the poorly-sorted gravel texture (matrix) because a large vertical anisotropy of the poorly-sorted gravel texture hampers vertical flow. ~~The~~; (iv) the angle between the trough fills and the main flow direction plays an important role for the mixing processes. The width and height of the mixing zones negatively correlate when the orientation of the trough fills changes impacting significantly advective mixing. Furthermore, when the trough fills are aligned with the main flow direction, a partial, transverse rotation of the particles is observed within the convex hull. When the trough fills are perpendicular to the main flow direction, the advective mixing is the smallest. The largest convex hull, particle deviation and mixing are found when the trough fills form an 45° angle with the main flow direction.

4 Discussion

~~Adjective~~ Advective mixing is enhanced by the spatial distribution of trough fills in the sedimentary ~~records~~ record and by the unsteady flow magnitude and direction. The advective mixing zones of closely spaced trough fills can interfere, resulting in a more complex ~~subsurface flow pattern~~. ~~Under~~ unsteady ~~pattern of subsurface flow~~. Under transient boundary conditions the mean flow direction and therefore the angle between the trough fills and the main flow direction change with time. In such a situation, the advective mixing zone as well as the flow patterns are expected to vary spatially and temporally ~~leading without doubt to an~~, most likely leading to enhanced advective mixing. Because of this complexity, the present experiment is a starting point for further investigations on the influence of different proportions and types of trough fills on advective mixing in coarse fluvial aquifers ~~at~~ on the 1 to 100 m scale.

In the presented synthetic model, the layers of poorly-sorted gravel are ~~not modelled by individual layers but by~~ modelled by an uniform, anisotropic matrix because the interface between the layers of poorly-sorted gravel are barely identifiable on the GPR records. While the model set-up (isolated trough fills embedded in poorly-sorted gravel) was observed in gravel ~~carries quarries~~ (e.g., Siegenthaler and Huggenberger, 1993), thin, finite layers of open-framework gravel can also be found within the layers of poorly-sorted gravel (e.g., Huggenberger and Regli, 2006). However, the contribution of these thin, high-permeable structures to advective mixing is expected to be negligible compared to that of the trough fills. The hydraulic conductivity tensors of the bimodal and open-framework gravel are both isotropic. ~~But at a larger scale, when considered together~~ However, upon upscaling, the open-framework–bimodal gravel couplets ~~show an anisotropic hydraulic conductivity (e.g., Jussel et al., 1994a; Stauffer, 2007) because of their layered structures and of the hydraulic conductivity contrast between the open-framework gravel and the bimodal gravel. Therefore, at this scale~~ lead to an anisotropic hydraulic conductivity tensor (e.g., Jussel et al., 1994a; Stauffer, 2007) with the thickness-weighted arithmetic mean of the two conductivities within the layering and the thickness-weighted harmonic mean perpendicular to it. Therefore, on larger scales, the flow direction may ~~be not not be~~ parallel to the hydraulic head gradient.

Note that the use of an interpolation scheme is superfluous if densely-sampled GPR data are available (e.g., pseudo three dimensional GPR survey) ~~; on condition that and~~ the different sedimentary textures are well-resolved by GPR.

5 Conclusions

~~This study puts~~ In this study, the hydraulic heterogeneity of coarse, braided river deposits ~~in a new term is modelled~~ through a simple geometrical model based on geological observations. The modelled trough fills (1i) act as an attractor for the groundwater upstream ~~from of~~ the trough fills, (2ii) induce a significant intertwining of the streamlines that flow through ~~resulting in a it, resulting in~~ strong advective mixing, and (3iii) cause a strong horizontal streamline deviation that results in a partial, large-scale flow rotation. Furthermore, the anisotropy of the hydraulic conductivity of the poorly-sorted gravel strongly influences vertical advective mixing whereas the orientation of the trough fills determine the flow patterns and therefore the degree of mixing. The advective mixing produced by the trough fills resembles a chaotic process that is very sensitive to the initial positions of the streamlines. ~~Whereas~~ While the emphasis is often put on the fast flow pathways and their connectivity, this study demonstrates the importance of the ~~hydraulic head field in advective mixing. The hydraulic head field results from the boundary conditions and sedimentary structure of the whole geological fabrics (see also Voss, 2011).~~ in interaction with the hydraulic boundary conditions (see also Voss, 2011).

This study is only valid for the considered type of trough fills, i.e., trough fills consisting of alternating layers of bimodal and open-framework gravel, and for the proposed conceptual model. Trough fills consisting of cross-bedded poorly-sorted gravel or of interfingering cross-beds are very likely to lead to different flow structures and therefore to different mixing patterns. The subsurface structure could ~~be more accurately~~ more accurately be modelled with high-resolution GPR data, thereby making the use of the geometrical model unnecessary.

The study findings shed light on possible advective mixing in natural ~~environment~~ environments and indicate complex advective mixing in dynamic systems such as in systems characterised by ~~a~~ significant groundwater–surface water ~~interaction~~ interactions. A better understanding of the sedimentary structure can provide ~~a~~ substantiate an additional support to the interpretation of the ecological processes in the hyporheic zone.

Acknowledgements. This study was funded by the Swiss National Science Foundation within the ENSEMBLE project (grant no. CRSI22_132249/1). Special thanks go to T. Hermans for constructive comments. The critical review from the editor and two anonymous referees helped to improve the quality of the manuscript.

References

- Anderson, M., Aiken, J., Webb, E., and Mickelson, D.: Sedimentology and hydrogeology of two braided stream deposits, *Sedimentary Geology*, 129, 187–199, doi:10.1016/s0037-0738(99)00015-9, [http://dx.doi.org/10.1016/S0037-0738\(99\)00015-9](http://dx.doi.org/10.1016/S0037-0738(99)00015-9), 1999.
- 360 Bayer, P., Huggenberger, P., Renard, P., and Comunian, A.: Three-dimensional high resolution fluvio-glacial aquifer analog: Part 1: Field study, *Journal of Hydrology*, 405, 1–9, doi:10.1016/j.jhydrol.2011.03.038, <http://www.sciencedirect.com/science/article/pii/S0022169411002186>, 2011.
- Beres, M., Green, A., Huggenberger, P., and Horstmeyer, H.: Mapping the architecture of glaciofluvial sediments with three-dimensional georadar, *Geology*, 23, 1087–1090, doi:10.1130/0091-7613(1995)023<1087:MTAOGS>2.3.CO;2, <http://geology.gsapubs.org/content/23/12/1087.abstract>, 1995.
- 365 Beres, M., Huggenberger, P., Green, A. G., and Horstmeyer, H.: Using two- and three-dimensional georadar methods to characterize glaciofluvial architecture, *Sedimentary Geology*, 129, 1–24, doi:10.1016/S0037-0738(99)00053-6, <http://www.sciencedirect.com/science/article/B6V6X-3Y9TWBN-1/2/317a70946b2393c07643d0a43c5dfac4>, 1999.
- 370 Best, J. L. and Rhoads, B. L.: Sediment Transport, Bed Morphology and the Sedimentology of River Channel Confluences, in: *River Confluences, Tributaries and the Fluvial Network*, edited by Rice, S. P., Roy, A. G., and Rhoads, B. L., pp. 45–72, John Wiley & Sons, Ltd, doi:10.1002/9780470760383.ch4, <http://dx.doi.org/10.1002/9780470760383.ch4>, 2008.
- 375 Bridge, J.: Advances in Fluvial Sedimentology using GPR, in: *Ground Penetrating Radar Theory and Applications*, edited by Jol, H. M., pp. 323–359, Elsevier, Amsterdam, doi:10.1016/B978-0-444-53348-7.00011-9, 2009.
- Chiogna, G., Cirpka, O. A., Rolle, M., and Bellin, A.: Helical flow in three-dimensional non-stationary anisotropic heterogeneous porous media, *Water Resources Research*, 51, 261–280, doi:10.1002/2014WR015330, <http://dx.doi.org/10.1002/2014WR015330>, 2015.
- 380 Cirpka, O. A., Chiogna, G., Rolle, M., and Bellin, A.: Transverse mixing in three-dimensional nonstationary anisotropic heterogeneous porous media, *Water Resources Research*, 51, 241–260, doi:10.1002/2014WR015331, <http://dx.doi.org/10.1002/2014WR015331>, 2015.
- Grimm, R. E., Heggy, E., Clifford, S., Dinwiddie, C., McGinnis, R., and Farrell, D.: Absorption and scattering in ground-penetrating radar: Analysis of the Bishop Tuff, *Journal of Geophysical Research: Planets*, 111, doi:10.1029/2005je002619, 2006.
- 385 Harbaugh, A.: MODFLOW-2005, The U.S. Geological Survey modular ground-water model — the ground-water flow process, *Survey Techniques and Methods 6–A16*, U.S. Geological Survey, 2005.
- Heinz, J. and Aigner, T.: Three-dimensional GPR analysis of various Quaternary gravel-bed braided river deposits (southwestern Germany), *Geological Society, London, Special Publications*, 211, 99–110, doi:10.1144/gsl.sp.2001.211.01.09, <http://dx.doi.org/10.1144/GSL.SP.2001.211.01.09>, 2003.
- 390 Heinz, J., Kleineidam, S., Teutsch, G., and Aigner, T.: Heterogeneity patterns of Quaternary glaciofluvial gravel bodies (SW-Germany): application to hydrogeology, *Sedimentary Geology*, 158, 1–23, doi:10.1016/S0037-0738(02)00239-7, <http://www.sciencedirect.com/science/article/pii/S0037073802002397>, 2003.

- 395 Hemker, K., van den Berg, E., and Bakker, M.: Ground Water Whirls, *Ground Water*, 42, 234–242, doi:10.1111/j.1745-6584.2004.tb02670.x, <http://dx.doi.org/10.1111/j.1745-6584.2004.tb02670.x>, 2004.
- Huber, E. and Huguenberger, P.: Morphological perspective on the sedimentary characteristics of a coarse, braided reach: Tagliamento River (NE Italy)., *Geomorphology*, 99999, 1–1, 2015.
- Huguenberger, P.: Radar facies: recognition of facies patterns and heterogeneities within Pleistocene
400 Rhine gravels, NE Switzerland, Geological Society, London, Special Publications, 75, 163–176, doi:10.1144/GSL.SP.1993.075.01.10, <http://sp.lyellcollection.org/content/75/1/163.abstract>, 1993.
- Huguenberger, P. and Aigner, T.: Introduction to the special issue on aquifer-sedimentology: problems, perspectives and modern approaches, *Sedimentary Geology*, 129, 179–186, doi:10.1016/S0037-0738(99)00101-3, <http://www.sciencedirect.com/science/article/pii/S0037073899001013>, 1999.
- 405 Huguenberger, P. and Regli, C.: A Sedimentological Model to Characterize Braided River Deposits for Hydrogeological Applications, in: *Braided Rivers*, edited by Sambrook Smith, G. H., Best, J. L., Bristow, C. S., and Petts, G. E., chap. 3, pp. 51–74, Blackwell Publishing Ltd., doi:10.1002/9781444304374.ch3, <http://dx.doi.org/10.1002/9781444304374.ch3>, 2006.
- Janković, I., Steward, D. R., Barnes, R. J., and Dagan, G.: Is transverse macrodispersivity in three-
410 dimensional groundwater transport equal to zero? A counterexample, *Water Resources Research*, 45, n/a–n/a, doi:10.1029/2009WR007741, <http://dx.doi.org/10.1029/2009WR007741>, w08415, 2009.
- Jussel, P., Stauffer, F., and Dracos, T.: Transport modeling in heterogeneous aquifers: 1. Statistical description and numerical generation of gravel deposits, *Water Resources Research*, 30, 1803–1817, doi:10.1029/94WR00162, <http://dx.doi.org/10.1029/94WR00162>, 1994a.
- 415 Jussel, P., Stauffer, F., and Dracos, T.: Transport modeling in heterogeneous aquifers: 2. Three-dimensional transport model and stochastic numerical tracer experiments, *Water Resources Research*, 30, 1819–1831, doi:10.1029/94WR00163, <http://dx.doi.org/10.1029/94WR00163>, 1994b.
- Kitanidis, P. K.: The concept of the Dilution Index, *Water Resources Research*, 30, 2011–2026, doi:10.1029/94WR00762, 1994.
- 420 Klingbeil, R., Kleinedam, S., Aspiron, U., Aigner, T., and Teutsch, G.: Relating lithofacies to hydrofacies: outcrop-based hydrogeological characterisation of Quaternary gravel deposits, *Sedimentary Geology*, 129, 299–310, doi:10.1016/S0037-0738(99)00067-6, <http://www.sciencedirect.com/science/article/pii/S0037073899000676>, 1999.
- Kruse, S. E. and Jol, H. M.: Amplitude analysis of repetitive GPR reflections on a Lake Bonneville delta,
425 Utah, in: *Ground Penetrating Radar in Sediments*, edited by Bristow, C. and Jol, H., vol. 211, pp. 287–298, Geological Society of London, doi:10.1144/gsl.sp.2001.211.01.23, 2003.
- Lunt, I. A., Bridge, J. S., and Tye, R. S.: A quantitative, three-dimensional depositional model of gravelly braided rivers, *Sedimentology*, 51, 377–414, doi:10.1111/j.1365-3091.2004.00627.x, <http://dx.doi.org/10.1111/j.1365-3091.2004.00627.x>, 2004.
- 430 Mattle, N., Kinzelbach, W., Beyerle, U., Huguenberger, P., and Loosli, H.: Exploring an aquifer system by integrating hydraulic, hydrogeologic and environmental tracer data in a three-dimensional hydrodynamic transport model, *Journal of Hydrology*, 242, 183–196, doi:10.1016/S0022-1694(00)00394-2, 2001.
- Mays, D. C. and Neupauer, R. M.: Plume spreading in groundwater by stretching and folding, *Water Resources Research*, 48, n/a–n/a, doi:10.1029/2011WR011567, 2012.

- 435 Neupauer, R. M., Meiss, J. D., and Mays, D. C.: Chaotic advection and reaction during engineered injection and extraction in heterogeneous porous media, *Water Resources Research*, 50, 1433–1447, doi:10.1002/2013WR014057, <http://dx.doi.org/10.1002/2013WR014057>, 2014.
- Pearson, R.: Outliers in process modeling and identification, *IEEE Transactions on Control Systems Technology*, 10, 55–63, doi:10.1109/87.974338, <http://dx.doi.org/10.1109/87.974338>, 2002.
- 440 Pollock, D. W.: User Guide for MODPATH Version 6 – A Particle-Tracking Model for MODFLOW, *Techniques and Methods 6–A41*, U.S. Geological Survey, 2012.
- Rauber, M., Stauffer, F., Huggenberger, P., and Dracos, T.: A numerical three-dimensional conditioned/unconditioned stochastic facies type model applied to a remediation well system, *Water Resources Research*, 34, 2225–2234, doi:10.1029/98WR01378, 1998.
- 445 Siegenthaler, C. and Huggenberger, P.: Pleistocene Rhine gravel: deposits of a braided river system with dominant pool preservation, *Geological Society, London, Special Publications*, 75, 147–162, doi:10.1144/GSL.SP.1993.075.01.09, <http://sp.lyellcollection.org/content/75/1/147.abstract>, 1993.
- Stauffer, F.: Impact of highly permeable sediment units with inclined bedding on solute transport in aquifers, *Advances in Water Resources*, 30, 2194–2201, doi:10.1016/j.advwatres.2007.04.008, <http://dx.doi.org/10.1016/j.advwatres.2007.04.008>, 2007.
- 450 Stauffer, F. and Rauber, M.: Stochastic macrodispersion models for gravel aquifers, *Journal of Hydraulic Research*, 36, 885–896, doi:10.1080/00221689809498591, <http://dx.doi.org/10.1080/00221689809498591>, 1998.
- Steward, D. R.: Stream surfaces in two-dimensional and three-dimensional divergence-free flows, *Water Resources Research*, 34, 1345–1350, doi:10.1029/98WR00215, <http://dx.doi.org/10.1029/98WR00215>, 1998.
- 455 Teutsch, G., Klingbeil, R., and Kleinedam, S.: Numerical modelling of reactive transport using aquifer analogue data, in: *Groundwater Quality: Remediation and Protection*, edited by Herbert, M. and Kova, K., no. 250 in IAHS Series of Proceedings and Reports, pp. 381–390, International Association of Hydrological Sciences, IAHS Press, 1998.
- 460 Voss, C. I.: Editor’s message: Groundwater modeling fantasies —part 1, adrift in the details, *Hydrogeology Journal*, 19, 1281–1284, doi:10.1007/s10040-011-0789-z, 2011.
- Whittaker, J. and Teutsch, G.: Numerical simulation of subsurface characterization methods: application to a natural aquifer analogue, *Advances in Water Resources*, 22, 819–829, doi:10.1016/S0309-1708(98)00056-6, <http://www.sciencedirect.com/science/article/pii/S0309170898000566>, 1999.
- 465 Ye, Y., Chiogna, G., Cirpka, O. A., Grathwohl, P., and Rolle, M.: Enhancement of plume dilution in two-dimensional and three-dimensional porous media by flow focusing in high-permeability inclusions, *Water Resources Research*, 51, 5582–5602, doi:10.1002/2015WR016962, <http://dx.doi.org/10.1002/2015WR016962>, 2015.

Table 1. Hydraulic properties of the main sedimentary structures (after Jussel et al., 1994a).

	Poorly-sorted gravel	Bimodal gravel	Open-framework gravel
Porosity	0.2	0.25	0.35
K_h (m s^{-1})	1.5×10^{-3}	1.5×10^{-3}	1×10^{-1}
$\sigma_{\ln K}$ (m s^{-1})	0.5	0.1	0.1
K_h/K_v	6	1	1

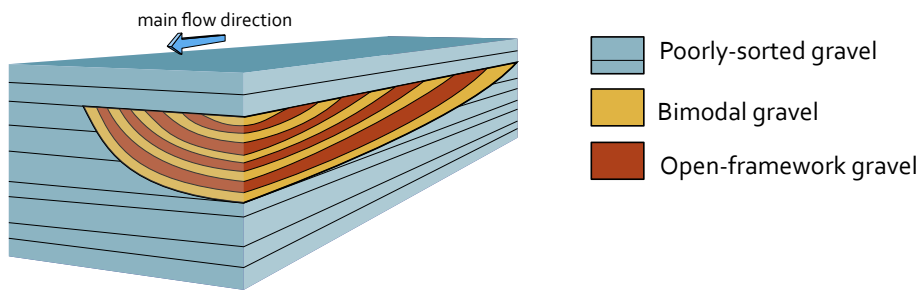


Figure 1. Simplified conceptual model of a single trough fill (with alternating open-framework–bimodal gravel couplets) embedded into layers of poorly-sorted gravel.

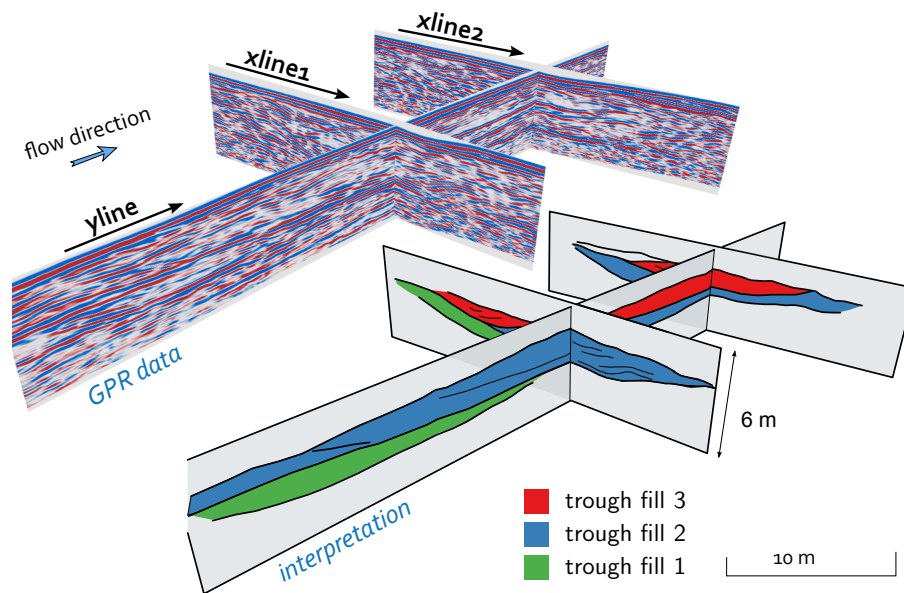


Figure 2. Fence diagram of the GPR data and their interpretation. The black arrows indicate the GPR survey direction.

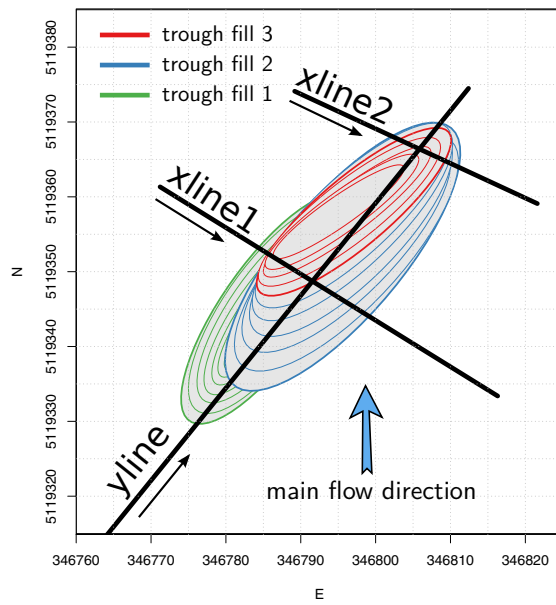


Figure 3. Top view of the geometrical trough fill model (Coordinate system: WGS 1984, UTM Zone 33N). The trough fills are represented by green, blue and red ellipses. The black lines indicate the position of the ground-penetrating radar profiles and the black arrows the GPR survey direction.

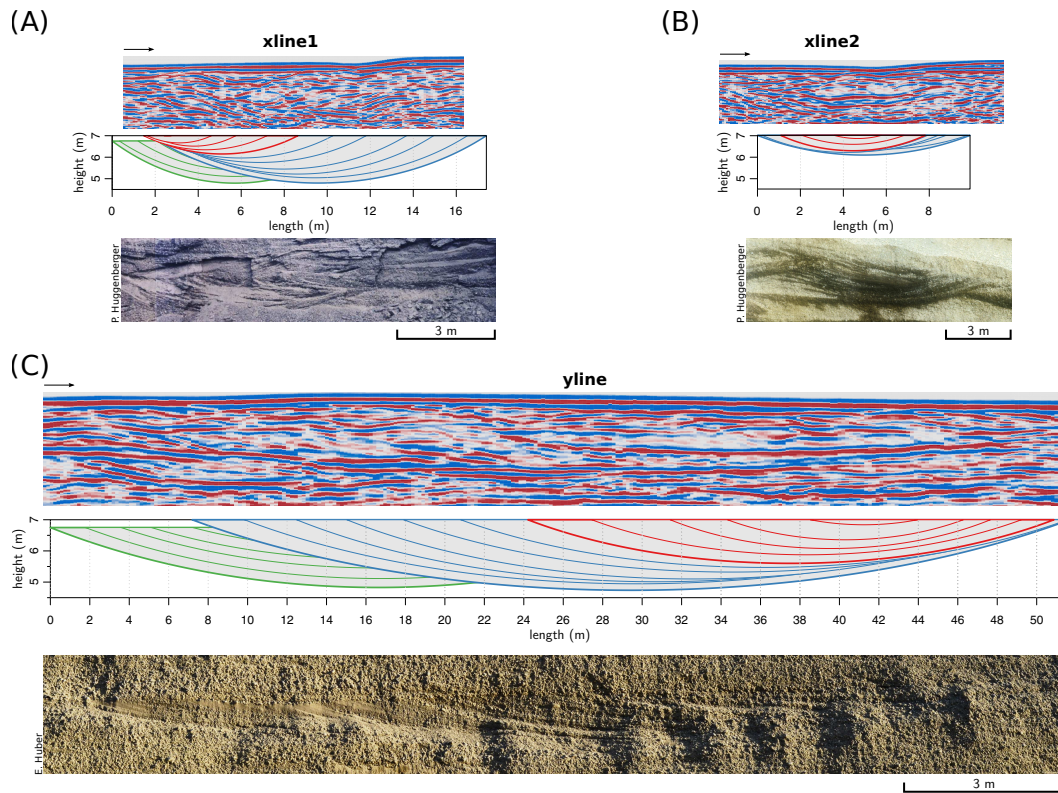


Figure 4. (a)–(c) Ground-penetrating radar data, sections of the geometric model and vertical outcrop exposures (northeast Switzerland) for comparison purposes. The trough fills are represented by green, blue and red ellipses. The black arrows indicate the GPR survey direction

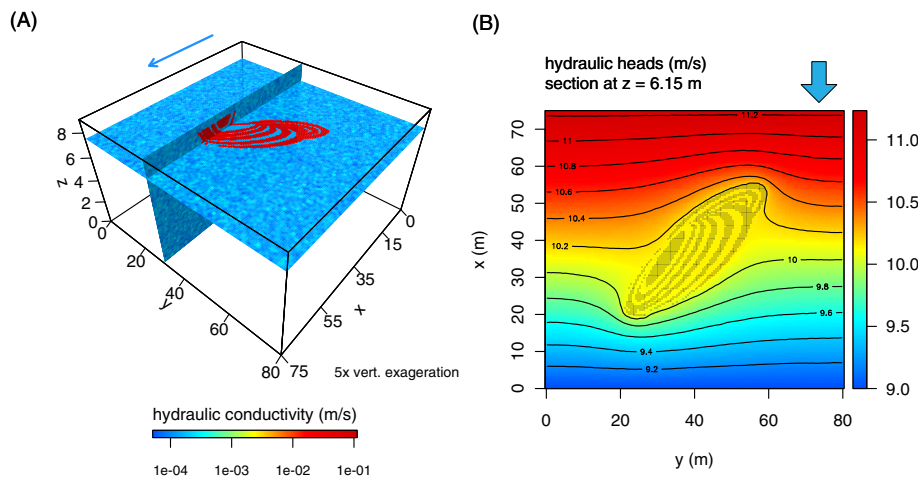


Figure 5. (a) Hydrogeological model setup with spatial distribution of the hydraulic conductivity values. (b) Hydraulic head at the upper model boundary (top view, contour every 0.05 m). The blue arrows indicate the main flow direction.

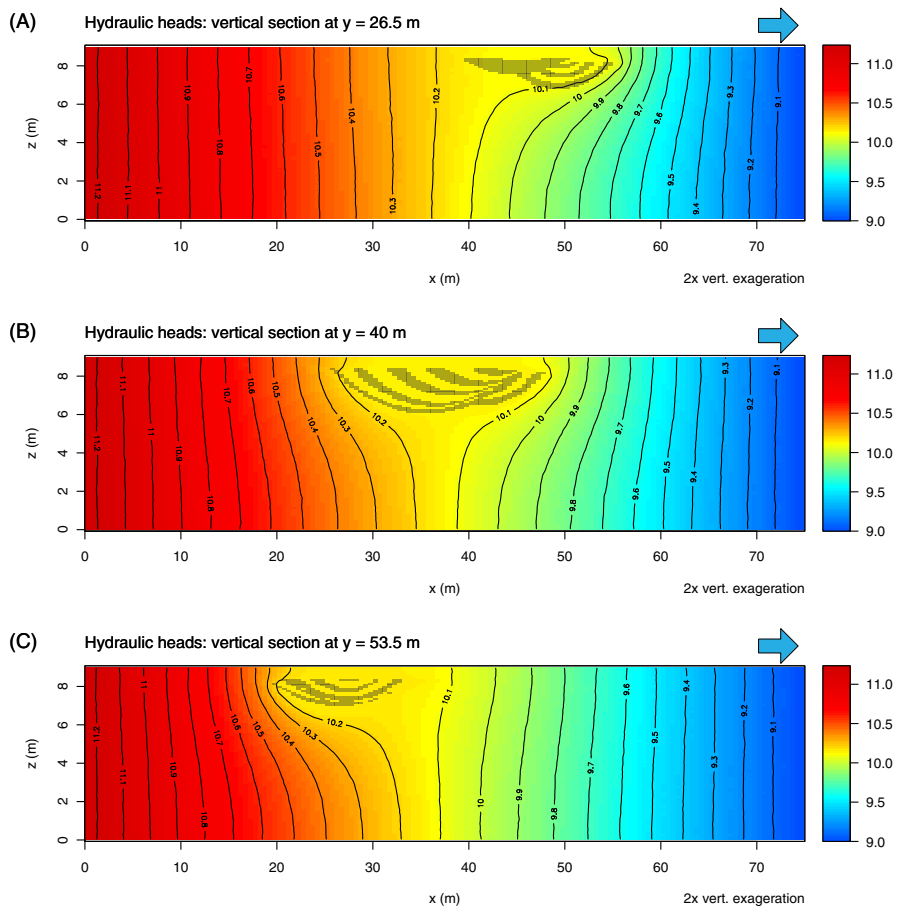


Figure 6. Cross sections of the hydrogeological model along the x axis (see the coordinate system defined in Fig. 5a) with hydraulic head contours (every 0.2 m) superimposed on the hydraulic head values. The blue arrows indicate the main flow direction. The grey pixels correspond to the highly-permeable layers of open-framework gravels.

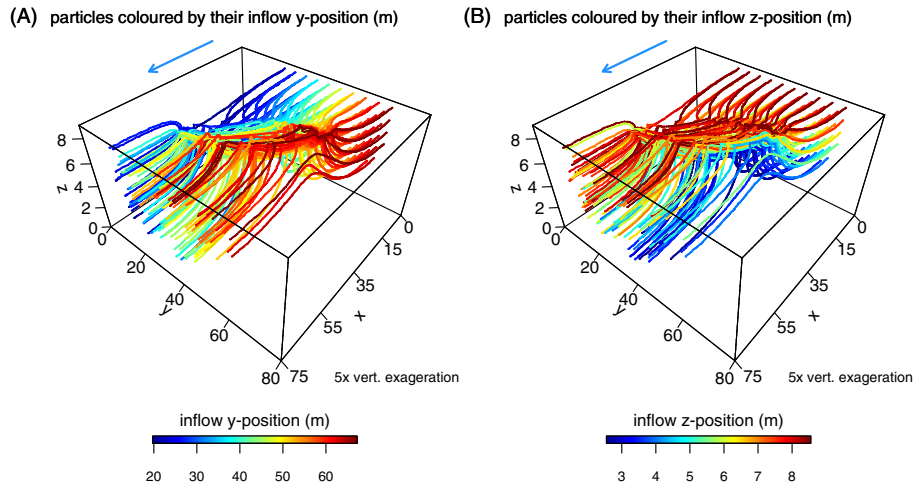


Figure 7. Particles coloured by their (a) y -coordinate position and (b) z -coordinate position on the inflow face. The blue arrows indicate the main flow direction.

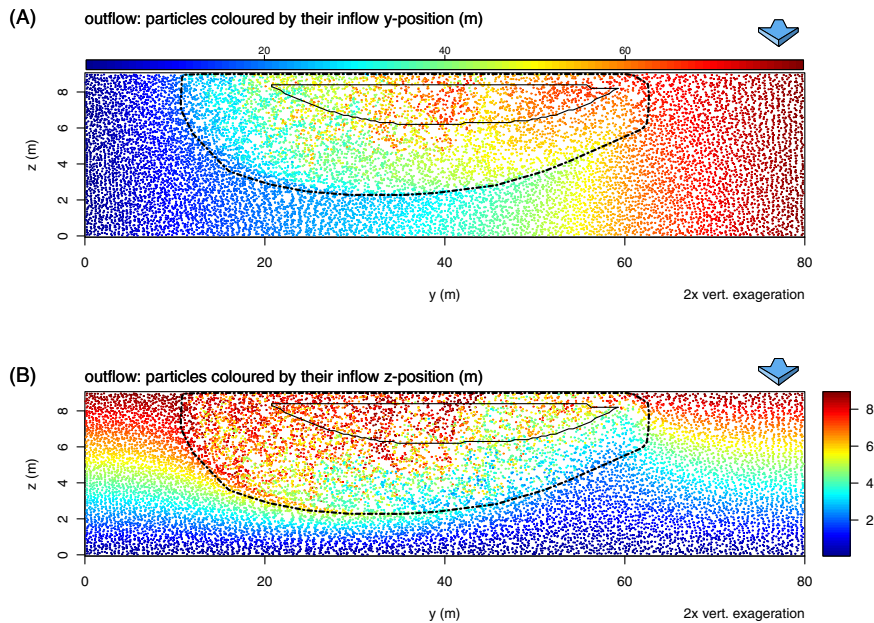


Figure 8. Particles on the model outflow face coloured by their (a) y -coordinate position and (b) z -coordinate position on the inflow face. The black line represents the shape of the trough fills projected on the outflow face and the dashed line represents the convex hull of the particles on the outflow face that flowed through the trough fills. The blue arrows indicate the main flow direction.

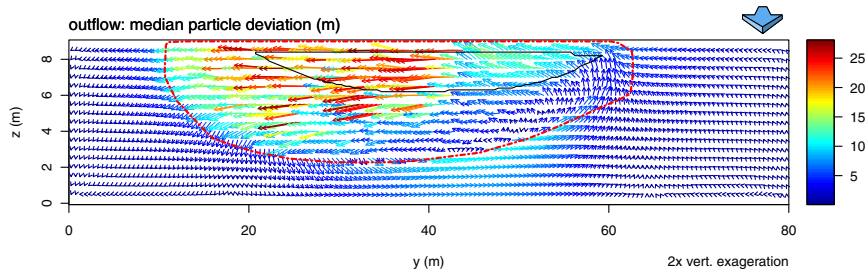


Figure 9. Median particle deviation between the inflow face and the outflow face (computed vertically for every five cells) represented by arrows. The arrow length and colour correspond to the deviation magnitude. The black line represents the shape of the trough fills projected on the outflow face and the dashed, red line represents convex hull of the particles on the outflow face that flowed through the trough fills. The blue arrow indicates the main flow direction.

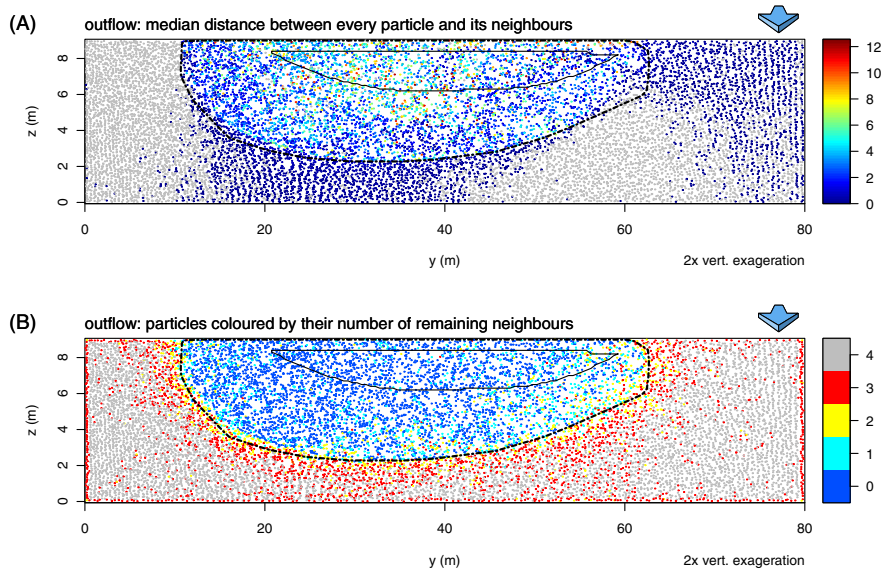


Figure 10. Particles on the model outflow face. (a) Median distance between each particle and its eight inflow-face neighbours computed on the outflow face. (b) For each particle on the outflow face, number of remaining neighbours from their four inflow-face neighbours. The black line represents the shape of the trough fills projected on the outflow face and the dashed line represents convex hull of the particles on the outflow face that flowed through the trough fills. The blue arrow indicates the main flow direction.

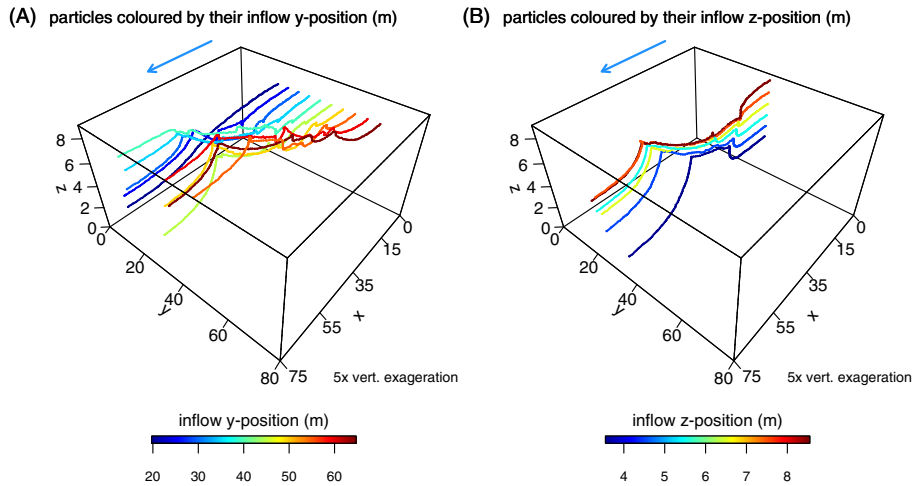


Figure 11. Selected particles coloured by their (a) y -coordinate position and (b) z -coordinate position on the inflow face. The blue arrow indicates the main flow direction.

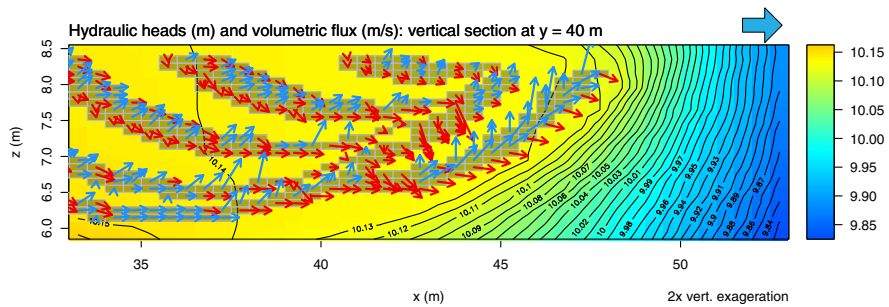


Figure 12. Enlarged view of the vertical section of the hydrogeological model along the x axis with the hydraulic head contours (every 0.01 m) superimposed on the hydraulic head values. The grey rectangles represent the open-framework cells. The arrows correspond to the volumetric flux vectors projected on the model section; red indicates that the flux flows downward, blue upward. The large blue arrow on top indicates the main flow direction