

Multiscale evaluation of the standardized precipitation index as a groundwater drought indicator

**R. Kumar¹, J. L. Musuuza^{1,2}, A. F. Van Loon^{3,4}, A. J. Teuling³, R. Barthel⁵,
J. Ten Broek³, J. Mai¹, L. Samaniego¹, and S. Attinger^{1,6}**

¹UFZ-Helmholtz Centre for Environmental Research, Leipzig, Germany

²Now at the Department of Civil Engineering, University of Bristol, Bristol, UK

³Hydrology and Quantitative Water Management Group, Wageningen University, Wageningen, the Netherlands

⁴Now at the School of Geography, University of Birmingham, Birmingham, UK

⁵Department of Earth Sciences, University of Gothenburg, Gothenburg, Sweden

⁶Institute of Geosciences, University of Jena, Jena, Germany

Correspondence to: R. Kumar (rohini.kumar@ufz.de)

Abstract

The lack of comprehensive groundwater observations at regional and global scales has promoted the use of alternative proxies and indices to quantify and predict groundwater droughts. Among them, the Standardized Precipitation Index (SPI) is commonly used to characterize droughts in different compartments of the hydro-meteorological system. In this study, we explore the suitability of the SPI to characterize local and regional scale groundwater droughts using observations at more than 2000 groundwater wells in geologically different areas in Germany and the Netherlands. A multiscale evaluation of the SPI is performed using the station data and their corresponding 0.5° gridded estimates to analyze the local and regional behavior of groundwater droughts, respectively. The standardized anomalies in the groundwater heads (SGI) were correlated against SPIs obtained using different accumulation periods. The accumulation periods to achieve maximum correlation exhibited high spatial variability (ranges 3 to 36 months) at both scales, leading to the conclusion that an a priori selection of the accumulation period (for computing the SPI) would result in inadequate characterization of groundwater droughts. The application of the uniform accumulation periods over the entire domain significantly reduced the correlation between SPI and SGI ($\approx 21\text{--}66\%$) indicating the limited applicability of SPI as a proxy for groundwater droughts even at long accumulation times. Furthermore, the low scores of the hit rate (0.3–0.6) and high false alarm ratio (0.4–0.7) at the majority of the wells and grid cells demonstrated the low reliability of groundwater drought predictions using the SPI. The findings of this study highlight the pitfalls of using the SPI as a groundwater drought indicator at both local and regional scales, and stress the need for more groundwater observations and accounting for regional hydrogeological characteristics in groundwater drought monitoring.

1 Introduction

Drought as a natural hazard is often associated with high socio-economic losses and damage to ecosystems (Wilhite, 2000). Many of these drought effects are not directly caused by rainfall deficits, but are related to below-average storage conditions in surface water, reservoirs, and groundwater that are the consequences of the propagation of a meteorological drought into the hydrological system (Tallaksen and Van Lanen, 2004; Mishra and Singh, 2010; Sheffield and Wood, 2011; Seneviratne et al., 2012). Due to a lack of large-scale groundwater and surface water observations, most scientists and water resources managers interested in drought predictions have to rely on proxy data to quantify storage conditions.

One widely-used approach is to use drought indices based solely on precipitation (e.g. Standardized Precipitation Index; SPI), because precipitation records generally have good spatial coverage and long observation periods required for drought analysis. It is then assumed that by computing the SPI over longer time scales (e.g., 3, 6, 12 or more months), it mimics the filtering effect of catchment storage conditions and hence captures the smooth precipitation deficits typical for hydrological (groundwater) droughts (Seneviratne et al., 2012; Joetzjer et al., 2013; Li and Rodell, 2015). Although the SPI is recognized as an effective meteorological drought index (Hayes et al., 2010) due to its relative ease of computation and comparability across climates, some studies have questioned its application for groundwater drought monitoring because the translation of precipitation deficits into hydrologic (groundwater) droughts is non-linear (Bloomfield and Marchant, 2013; Teuling et al., 2013; Van Loon et al., 2014). Both catchment and climate characteristics such as the differences in underlying soil, terrain, vegetation and geological properties, precipitation seasonality, snowmelt timing, and the availability of atmospheric water supply and demand (evapotranspiration) control the development hydrologic droughts and the resulting drought characteristics (Bloomfield and Marchant, 2013; Haslinger et al., 2014; Van Loon et al., 2014; Stoelzle et al., 2014; Van Loon, 2015). Recently, (Vicente-Serrano et al., 2010) introduced the Standardised Precipitation-

Evapotranspiration Index (SPEI) having a similar multitemporal characteristic of the SPI, but accounting for both the atmospheric water supply (precipitation) and evaporative demand (potential evapotranspiration). SPEI can account for the influence of temperature variability and thus it is better suited than SPI for drought studies under global warming conditions.

5 In regions with high precipitation variability (e.g., humid areas), both the SPI and SPEI are expected to generally exhibit a similar behaviour, albeit having slight differences among each other during a specific calendar month and time period (Vicente-Serrano et al., 2012).

Another approach to quantify drought is based on the use of large-scale gridded data products, e.g., from hydrologic models or satellites (e.g., Sheffield et al., 2004; Andreadis et al., 2005; Vidal et al., 2010; Samaniego et al., 2013; van Huijgevoort et al., 2013; Prudhomme et al., 2014; Mo and Lettenmaier, 2013; Nijssen et al., 2014; Hao et al., 2014; Li and Rodell, 2015; Damberg and AghaKouchak, 2014; Wanders et al., 2015; AghaKouchak et al., 2015). An extensive multi-model study (Prudhomme et al., 2014) for example, projected increases in hydrological drought severity in many areas around the world. This approach also has limitations in its application at local to regional scale hydrological drought monitoring because of scale mismatches and some issues in the correct representation of storage in models (Gudmundsson et al., 2012; Van Loon et al., 2012; Tallaksen and Stahl, 2014). The importance of spatial variation in groundwater drought conditions resulting from complexity in subsurface conditions is increasingly recognized (Peters et al., 2006; Bloomfield and Marchant, 2013; Stoelzle et al., 2014).

While there are many studies that have focused on analyzing the propagation of meteorological droughts through the hydrologic systems for improved process understanding of the evolution of hydrologic (groundwater) droughts (e.g., Eltahir and Yeh, 1999; Peters et al., 2003, 2005, 2006; Tallaksen et al., 2006, 2009; Weider and Boutt, 2010; Vicente-Serrano et al., 2012; Bloomfield and Marchant, 2013; Haslinger et al., 2014; López-Moreno et al., 2013; Van Loon et al., 2014), there is still lack of comprehensive observational-based studies to verify whether hydrological drought proxies, like precipitation-based indices (SPI) and gridded data products, are suitable for groundwater drought monitoring at regional to local scales relevant for water management.

In recent years there had been some efforts on analyzing the relationship between meteorological and groundwater based drought indices (Bloomfield and Marchant, 2013; Folland et al., 2015; Bachmair et al., 2015). Bloomfield and Marchant (2013), for example, introduced the Standardized Groundwater level Index (SGI), similar to the SPI, and found a site specific relationship between the two indices. Their study was, however, limited to the analysis of local scale behavior of groundwater droughts at 14 sites across the UK.

In this data-based exploratory study, we test the suitability of the SPI to characterize groundwater droughts using observations at more than 2000 groundwater wells located in Germany and the Netherlands. We used this large set of groundwater wells to comprehensively analyze the local to regional behavior of groundwater droughts and investigate the scale mismatch between local and regional scale estimates. A focus on groundwater was preferred to other hydrological variables because of the immense multi-sectoral importance of the resource (Famiglietti, 2014). Given the wide-spread availability and usage of precipitation-based drought indices, we hypothesize that if adequate accumulation periods and lead times are applied to the precipitation signal, the observation-based SPI can predict groundwater droughts. In this maiden attempt we carry out a quantitative evaluation of the performance of the widely-used SPI for groundwater drought monitoring on a local to regional scale using a large collection of groundwater well records, focusing on the statistical skill and not on the causing factors. The results of this study will provide insight to the water-sector practitioners and managers on the precautions demanded if they are to use local precipitation data or large-scale gridded estimates to characterize groundwater droughts.

2 Method

2.1 Study area and data

The study was performed using monthly groundwater observations from two hydro-geologically different regions located in southern Germany and central Netherlands (Dutch

province of Gelderland) with 1991 and 49 groundwater wells, respectively (Fig. 1). The Dutch region is characterized by maritime climate and the wells are located on a relatively low terrain, but with large spatial differences in unsaturated zone and groundwater conditions. The German wells are located in a region with hilly to mountainous terrain, less oceanic influence on climate and a wide range of unconsolidated and consolidated geological formations. The monthly groundwater data for the German wells were collected from the Bavarian Environment Agency (LfU Bayern) and the State Institute for Environment, Measurements and Nature Conservation Baden-Württemberg (LUBW). The data for the Dutch wells were acquired from the Dutch institute TNO (www.dinoloket.nl/).

To be able to attribute groundwater level changes to climatic causes, it is necessary to exclude the possibility that these changes are a consequence of anthropogenic influences such as pumping or hydraulic structures. Therefore, those wells which exhibit obvious signs of anthropogenic influences were excluded from the analysis. In general, in both regions it can be expected that the effects of groundwater withdrawals are only local as water consumptions constitutes only a very minor portion of the potentially available water resources (precipitation - evapotranspiration). In the German study area it is estimated that only about 3% of the potentially available water are used (Nickel et al., 2005). Irrigation is not widely applied. Moreover, the groundwater withdrawal in the region is relatively constant all year round as it is mainly domestic and industrial use without peak loads in specific seasons. Notably the German wells are located in quite densely populated regions (approx. 15 million population) and groundwater forms the main source of drinking water. This, however, does not have large impact on the presented analysis since the observation wells used in this analysis are typically located far away from pumping wells. Thus, fluctuations in groundwater levels can be mainly attributed to weather/climate and not to fluctuations of groundwater use.

The majority of the selected wells (around 90 %) are located in shallow aquifers with an average depth to the water table within 20 m below the ground surface (see Fig. 3a for the well distribution). The length of records varied from well to well with a minimum of 10 years

(Fig. 1) starting from the year 1951 for the German wells and 1988 for the Dutch wells. It should be noted that the 10-year criterion does not meet the recommended minimum 30 years (McKee et al., 1993; Guttman, 1999) for estimating drought indices (i.e., SPI or SGI). However, a longer cutoff of 30 years would lower the number of qualifying wells significantly. For example, all the Dutch wells would have been excluded under this criterion (Fig. 1). The limited availability of in situ groundwater data records as well as the variable record lengths are inevitable problems in performing groundwater drought studies over a large domain (see e.g., Peters et al., 2006; Weider and Boutt, 2010; Li and Rodell, 2015). We nevertheless have tested the reliability of our results to this data availability issue (as discussed later in Sect. 3.1).

The sampling time interval of groundwater observations varied from well to well and also within a single well from one time period to another, at daily, weekly, and monthly time intervals. For example, the original data for German wells were measured at least on weekly time interval until about 1990, from then on a steadily increasing number of observations switched to daily measurements. Roughly from 2000 onwards, all stations provide data at a daily time interval. To harmonize these disparate data sets at a common time scale, we performed the analysis at a monthly time scale wherein shorter time scale data sets were averaged to produce the monthly groundwater time series. The missing groundwater observations were left out from the analysis (i.e., left missing). Finally, we consider only those wells which have at least 10 years of valid monthly records (i.e., without missing values).

The daily precipitation time series at every well were extracted from their gridded estimates computed based on the available rain gauge network (Samaniego et al., 2013; ten Broek et al., 2014). The underlying point measurement data from about 5600 rain gauges for Germany and 51 rain gauges for the Netherlands were acquired from the German Meteorological Service (DWD) and the Royal Netherlands Meteorological Institute (KNMI), respectively. Interested readers may refer to Samaniego et al. (2013) and ten Broek et al. (2014) for more details on processing with precipitation data sets for the German and the Dutch regions, respectively. The monthly total precipitation was then computed from

their respective daily estimates to match the temporal resolution of groundwater records. Additionally, prior to the SPI calculations, the precipitation time series was filtered based on the temporal availability of groundwater records to ensure the comparability between the two time series. In other words, the months with missing groundwater records are also set to missing in the precipitation time series. This filtering step is however applied after the accumulation of precipitation (for any selected time periods e.g., 3, 6, 12 months) for longer time scales had been performed. In this way, we ensured the consistency of the longer time scales (accumulated) SPI estimates, as well as their compatibility with the availability of groundwater records such that both variables had same sample size for the estimation of the corresponding drought indices (i.e., SPI and SGI).

2.2 Drought indices

The Standardized Precipitation Index (SPI) was developed by McKee et al. (1993) to characterize the wetness and dryness conditions of a region based on the departure of the monthly precipitation estimate from their (average) normal value. The SPI can be estimated for different time scales by accumulating the monthly precipitation over different periods, typically at 3, 6, 12, 24, or 36 months (see McKee et al., 1993 for a detailed treatment). In most applications of the SPI, an analytic distribution function (e.g., the gamma) is fitted to the long-term precipitation record for a given accumulation period, and then the corresponding cumulative probability distribution is computed. Finally, the cumulative probability distribution is transformed to the standard normal distribution to estimate the SPI (McKee et al., 1993; Guttman, 1999). Any month with an SPI value below (above) zero is assumed to reflect dry (wet) conditions. Fitting theoretical distribution functions to data is potentially problematic because it is difficult to determine the structural form of the distribution function in advance. For example, Guttman (1999) found for the SPI that the Person Type III distribution was the best universal model based on large set of US datasets, whereas Lana et al. (2001) found that data from Catalonia in Spain could best be modeled with the Poisson-gamma distribution. Additional problems may arise if the data exhibits multi-modality.

To avoid these problems and minimize the uncertainty associated with the selection and estimation of parametric distribution functions, we used a non-parametric kernel density estimator to compute the cumulative probability distributions of the precipitation and groundwater data. The kernel density $\hat{f}(x)$ is given as

$$\hat{f}(x) = \frac{1}{nh} \sum_{k=1}^n K\left(\frac{x - x_k}{h}\right) \quad (1)$$

where h represents the bandwidth, $K(x)$ the kernel smoothing function, x_1, \dots, x_n the set of variable of interest (i.e., precipitation or groundwater level), and n the sample size. We used the Gaussian kernel in this study because of its unlimited support and estimated the bandwidth h by an optimization against a cross-validation error estimate (see Samaniego et al., 2013 for details). The distribution functions and the corresponding bandwidths were estimated for each well and calendar month separately. The resulting quantiles, bounded on $[0, 1]$, are denoted hereafter as SPI and SGI for precipitation and groundwater, respectively. The quantile-based index has been used in several recent drought studies (Sheffield et al., 2004; Andreadis et al., 2005; Vidal et al., 2010; Samaniego et al., 2013), and can be easily transformed to the unbounded range of the standard normal distribution (Vidal et al., 2010). The SPI and SGI values below (above) 0.5 denote dry (wet) conditions. Compared to the absolute values of groundwater heads (precipitation estimates), the transformed SGI (SPI) values facilitate better the comparison across space and season (Sheffield et al., 2004). We note that our approach of estimating the SPI time series differs from a more conventional approach of fitting a defined distribution function to the precipitation time series and then estimating the corresponding SPI estimates (Guttman, 1999; Hayes et al., 2010). A non-parametric approach is used here to avoid the problem of assigning a unique distribution function to all datasets (as mentioned above), and to ensure the consistency in the estimation of drought indices for the precipitation and groundwater time series (i.e., both variables use a similar approach so that the resulting drought indices fall within the same range $[0, 1]$). We note that many recent drought studies have adopted a non-parameteric

approach for the estimation of drought indices (see, e.g., Andreadis et al., 2005; Vidal et al., 2010; Bloomfield and Marchant, 2013; Samaniego et al., 2013; Hao et al., 2014). Bloomfield and Marchant (2013), for example, had difficulties in identifying an unique best distribution function that fits to all groundwater records at various locations, and even at a given location a fitted distribution function varied from one calendar month to another. Here we adopt their approach and estimate precipitation and groundwater drought indices (SPI and SGI) through a non-parameteric method.

2.3 Experimental setup and evaluation criteria

In this study, we explore the ability of SPI to characterise the local and regional scale behavior of groundwater droughts. Therefore, we carried out our analysis at two disparate scales denoted hereafter as the point and the grid scales. The point scale analysis was performed on well-by-well basis using their available SPI and SGI time series. We based this analysis on the assumption that the zone of influence for changes in groundwater levels is limited to the area directly surrounding the well as most of the wells are located within shallow aquifers (see, Fig. 3 for the distribution of average depth to the water table across the investigated wells). We note that the approach chosen here is consistent with that commonly used in previous groundwater studies (e.g., Bloomfield and Marchant, 2013; Li and Rodell, 2015). On the other hand, the grid scale analysis was carried out using the monthly estimates of drought indices gridded at a 0.5° spatial resolution – the scale which is commonly used in regional and global scale drought studies (e.g., Sheffield et al., 2004; Andreadis et al., 2005; Gudmundsson et al., 2012; Seneviratne et al., 2012; Van Loon et al., 2012; Tallaksen and Stahl, 2014; Wanders et al., 2015). The gridded fields of drought indices were estimated using a procedure similar to the ones employed in creating multi-model drought indices (see, e.g., Mo and Lettenmaier, 2013; Nijssen et al., 2014). Following this procedure, the individual estimates of well-specific drought index were combined into a single grid representative estimate by averaging the drought index from those wells which lie within the selected grid cell. The resulting monthly estimates at each grid were then converted into a percentile based drought index following the (non-parametric kernel)

density estimator approach illustrated in Sect. 2.2 for the well-specific data sets. The number of qualifying wells with at least 10 years of records per grid cell varied across the study domain between (1 and 261) for Germany and (1 and 14) for the Netherlands with a median value of around 21 and 5 wells, respectively. We note that as a preliminary investigation towards the regional assessment of groundwater droughts, we used a well adopted ensemble mean approach to estimate 0.5° gridded fields of SPI and SGI. In this simple approach, we used data of all available wells that fall within a particular grid cell, without accounting for the differences in sample size (i.e., the number of wells within a grid cell), to create the gridded estimates of SPI and SGI. We have analyzed the differences in sample size on the gridded SPI and SGI skill scores (reported in Sect. 3.4).

To provide a qualitative skill of the SPI to characterize the SGI, we first examine the spatio-temporal relationship between the two indices based on the cross-correlation analysis. Here we consider the entire spectra $[0,1]$ of the SPI and the SGI, without distinguishing between dry or wet regimes. In other words, this part of the analysis was conducted using the entire time series of SPI and SGI that covers the whole spectrum of hydro-meteorological conditions spanning from the extremely dry to very wet conditions. The analysis was performed separately for both point and grid scale data sets, with different accumulations and lags of SPI ranging from 1 to 48 months. In this analysis, we used the Spearman rank correlation coefficient (r) as a non-parametric measure to quantify the strength of a monotonic relationship between the SPI and SGI. Since the propagation of precipitation signals to the groundwater is highly nonlinear, the rank correlation was preferred over the traditional Pearson (linear) correlation coefficient in this analysis. The goal here was to identify what accumulations and lags of SPI are required to align the signals of precipitation with the groundwater heads; and how they vary in space for both point and the gridded data sets.

In the subsequent analysis, we focus on assessing the ability of SPI to detect groundwater droughts based on SGI. A drought is defined when the indices (i.e., SPI or SGI) fall below a certain threshold (τ), taken here as 0.2 following previous studies (Sheffield et al., 2004; Andreadis et al., 2005; Vidal et al., 2010; Samaniego et al., 2013).

According to the drought classification scheme used by the U.S. Drought Monitor (USDM; <http://droughtmonitor.unl.edu>), more severe and extreme drought conditions appear when the indices fall below the τ value of 0.1 and 0.05, respectively. The reliability of groundwater drought predictions made by the SPI for different drought classes can be assessed using probabilistic scores based on the probability of detection or hit rate (H) and the false alarm ratio (F). Following the (2×2) contingency table, the hit rate (H) is given by

$$H = \frac{a}{a + c} \quad (2)$$

and the false alarm ratio (F) represented as

$$F = \frac{b}{a + b} \quad (3)$$

where a , b , and c are the hits, false alarms and misses, respectively (Wilks, 2011). In our case, the hit rate H is the fraction of all groundwater drought events correctly predicted by the SPI (i.e., the ratio of the number of times the SPI predicts a groundwater drought when the SGI indicates the occurrence of one, to the total number of times the SGI indicates drought conditions). The false alarm ratio F represents the fraction of forecasted drought events that were false alarms (i.e., the ratio of the number of times the SPI predicts a groundwater drought when the SGI does not indicate one, to the total number of times the SPI predicts droughts). The best scores for H and F are 1 and 0, respectively; and the worst values being 0 and 1, respectively. More recently, Haslinger et al. (2014) used a similar approach to assess the link between the SPI and other atmospheric indices (e.g., SPEI and PDSI) to detect low flow events in the Austrian catchments based on hit rates (H).

3 Results and discussion

3.1 Cross-correlation analysis between SPI and SGI

The results of the cross-correlation analysis between SGI and SPI at different accumulations and lags reveal a large degree of spatial variability in the accumulation period A required to achieve maximum correlation r_m at both point and grid scales (Fig. 2). The A value corresponding to the r_m is referred hereafter as an “optimal” accumulation period. The estimates of A across the majority of wells and grid cells ($> 90\%$) in both study regions varied broadly between 3 and 36 months with an overall median value of around 6 to 12 months. The relatively large variation of A values across the investigated wells signifies the importance of the underlying climate, soil, vegetation, and aquifer properties in modulating the precipitation signals for groundwater flows.

Our preliminary analysis indicated that the wells located in comparatively very thick unsaturated zones or deeper groundwater tables exhibited on average higher accumulation periods, and vice-versa (Fig. 3a). For example, the higher accumulation values (> 24 months) in the middle of the (Gelderland) Dutch region are due to the presence of a relatively thicker unsaturated zone going up to 30 m deep (Fig. 2). Consistent with the theoretical expectation, a similar relationship between the accumulation periods and the depth to the water table was reported recently by Li and Rodell (2015) when analyzing groundwater droughts at wells located in the Mississippi river basin and nearby regions. In general, deeper groundwater tables (or thicker unsaturated zone) cause more attenuation of the high frequency precipitation signals, and require longer accumulations of precipitation to properly align with the smoothed variability of groundwater signals (Barthel, 2011). On the other hand, the shallower groundwater table responds more quickly to high frequency precipitation events and the variability of the groundwater anomalies is better explained by the shorter timescale of the SPI. There are, however, exceptions to this general behavior and the temporal dynamics of groundwater indices (SGI) at some wells in shallower aquifers exhibited better correlation with a longer time scale SPI, going up to 48 months (Fig. 3a). This highlights the need to take into account other hydrogeological and well-specific

information like aquifer release and storage characteristics, perforation type, borehole location, among others (Bloomfield and Marchant, 2013; Stoelzle et al., 2014).

We also examined the role of geological characteristics on the spatial variability of optimal accumulation period (A) and maximum correlation (r_m) between the SPI and SGI. For this purpose, the underlying hydraulic conductivity values of the uppermost aquifer were extracted from the available large-scale hydro-geological map of Germany (HUEK200; available at a scale of 1:200 000). The wells were grouped into four dominant conductivity classes: High ($> 10^{-3}$ m/s), medium (10^{-3} – 10^{-5} m/s), low (10^{-5} – 10^{-7} m/s), and very low ($< 10^{-7}$ m/s). Results of this analysis indicate that there is no clear trend in the optimal accumulation period (A) between SPI and SGI over these classes (Fig. 3b). The correspondence between optimal SPI and SGI appears to be relatively weaker at wells located in aquifers with lower conductivity as indicated by a relatively lower value of the maximum correlation (r_m). The optimal accumulation periods (A) appear on average higher for the wells located in the medium to low type of aquifer permeability class as compared to that noted for the very low conductivity class for which one could have expected the largest smoothing (or attenuation) of precipitation signals. These seemingly contradictory results indicate that the influence of local geological conditions on the propagation of precipitation signals to groundwater flows cannot be assessed by looking single factors (here aquifer conductivity) alone. We note that other geological parameters such as transmissivity and horizontal extent of an aquifer, which are not readily available, would have been more adequate in characterizing the aquifer response time (e.g., Kraijenhoff-van de Leur, 1958; Gelhar, 1993). Also other local factors such as depth to the groundwater, properties of the unsaturated zone, etc. play an important role and their contribution is neither linear nor independent. It adds to the complexity of this problem that data on local conditions are only available from rather coarse large scale hydro-geological maps (e.g., HUEK200 map) with possible large deviations from the actual well-specific conditions. These issues thus require careful and detailed analyses which are beyond the scope of this study. We note that the focus of this study is not on identifying potential factors or relationships explaining the spatial variability of accumulation periods. Nevertheless, we emphasize that the results

of our above presented analysis (Fig. 3a) show the opportunity for establishing a first-order regional relationship between the accumulation period and the average depth to water table, for which global estimates are now becoming available (Fan et al., 2013).

5 The lag times (L) leading to maximum correlation (r_m) between the SPI and SGI show a limited spatial variability across the majority of wells and grid cells with values generally close to zero (Fig. 2b). This implies that the temporal anomalies of the groundwater heads (SGI) at those locations are aligned to those of the (accumulated) precipitation (SPI). Results of our analysis did indicate a substantial variation in the maximum correlation (r_m) across the investigated wells, pointing out the lack of a uniform strong relationship between
10 SPI and SGI (Fig. 2c). The r_m values ranged between 0.40 and 0.87 for the majority of German wells, and between 0.47 and 0.87 for the Dutch wells with the overall median r_m value of around 0.68 and 0.70, respectively. A relatively weaker correlation between SPI and SGI was found for wells located in a shallower aquifer, where the average depth to the water table is less than 5 m (Fig. 3b). The r_m value estimated across these shallower wells
15 was on average around 0.64, whereas for wells located in a relatively deeper aquifer (with water table depth > 5 m) the average r_m was 0.72. This trend of the correlation (r_m) with the average water table depth is, however, not so strongly pronounced as in a case of the accumulation period (Fig. 3a and b).

We also tested the reliability of the above results against the data availability issue. The
20 A and r_m obtained across all wells were grouped into three categories according to their available record lengths (i.e., in 10–20, > 20 –30, and > 30 years). Both the spread and the average behaviour of the optimal accumulation period (A) and the maximum correlation (r_m) were comparable across the group of wells with different record lengths (Fig. 3c and d). This shows that the above presented results are reliable and are not contingent on the
25 selection of wells with either short or long record lengths. We also emphasize here that our results are not biased to the selected statistical criteria (i.e., rank correlation). Similar results (not shown here) were obtained using other criteria such as the Pearson correlation coefficient and the mean absolute error; both exhibited substantially large (small) variations in the accumulation (lag) periods across the analyzed wells and grid cells.

3.2 SPI with spatially uniform accumulation periods

The spatial variation in the optimum accumulation periods shown in Fig. 2 demonstrates that there exists no single representative value that is applicable over the entire domain. A noticeable reduction in the correlation values (r) between SGI and SPI was observed when a uniform accumulation period was applied to all wells or grid cells (Fig. 4). For instance, the correlation estimated across the investigated wells on average reduced from the r_m value of 0.67 to 0.23, 0.46, 0.53, 0.50, 0.44, and 0.27 for the 1, 3, 6, 12, 24, and 48 months of uniform accumulations, respectively. Around 10 to 65% of the wells exhibited a notably low correlation with r values less than 0.3. The gridded data sets exhibited slightly better correspondence between SPI and SGI than the point ones, with the maximum correlation being dropped from 0.73 to 0.26, 0.54, 0.62, 0.64, 0.56, and 0.35 for the 1, 3, 6, 12, 24, and 48 months of uniform accumulations, respectively. In this case, nearly 5–60% of the grid cells exhibited notably low correlation values below 0.3. Among the different uniform accumulation periods, the strongest correlation between SGI and SPI was observed for 6–12 months of accumulations, while the weakest link was found for the one month precipitation accumulation (Fig. 4). These results suggest that the changes in the monthly groundwater levels can not be explained by the month-to-month precipitation variability, rather the smoothed response of groundwater requires the contribution from seasonal to annual precipitation. These results are consistent with findings of other recent studies performed in different regions (e.g., Bloomfield and Marchant, 2013; Li and Rodell, 2015), and the findings here assert to the general notion of the groundwater system acting as a low pass filter, responding to moderate climate forcings (e.g., Eltahir and Yeh, 1999; Weider and Boutt, 2010).

The discrepancy between SGI and SPI was further quantified using the mean absolute error (E) criterion to provide a quantitative estimate of the error E in the units of the SPI or SGI (i.e., between 0 and 1). The resulting E value for both point and gridded data sets on average ranged between 0.17 and 0.26 for different accumulation periods of the SPI (Fig. 4). These are quite substantial errors considering that the threshold used to classify between

a drought and a no-drought event is usually taken as 0.2 for the quantile based drought indices (Sheffield et al., 2004; Andreadis et al., 2005; Vidal et al., 2010; Samaniego et al., 2013). In this case, even the minimum mean absolute error (E) estimates corresponding to the spatially varying optimal accumulation periods were fairly large with an average estimate of around 0.15–0.16 for the point and the gridded data sets. These high degrees of discrepancies between the SGI and the SPI clearly indicate the inability of the precipitation based drought index to adequately characterize groundwater drought events.

Results of our analysis also show a relatively larger spread in both statistical criteria (i.e., r and E) estimated for the point data sets as compared to the gridded ones (Fig. 4). This once again emphasizes the importance of local scale heterogeneities in propagating the precipitation signals to groundwater. Clearly, the exhibited high variability of precipitation and groundwater anomalies at a point scale are smoothed out at a grid scale due to the spatial averaging that resulted in a better correspondence between the gridded indices at a regional scale (Fig. 4). Despite the better agreement, the error between the gridded SGI and SPI at any of the uniform or the optimal accumulation periods remained substantially high with an average value of at least 0.15 – the error level that is comparable to a threshold value ($\tau = 0.2$) used to classify droughts.

Overall, the above presented results signify the importance of identifying an appropriate drought time scale i.e., the optimal accumulation period of precipitation based drought indices which is best correlated to impact variables (e.g., streamflow or groundwater levels indicating hydrological or groundwater drought indices). The application of a single accumulation period over the entire domain or among different impact variables could induce large errors and therefore is not recommended. The diversity of relationships that are usually recorded between drought indices and impact variables stresses the need of testing initially the best time-scales of a drought index to determine possible impacts. It is however noted that such analysis would require a good quality of impact variable datasets and for many regions for which we need reliable and accurate datasets (e.g., on groundwater drought information) these observations are often not readily available. Nevertheless, the issue of analysing an appropriate drought time scale is not only specific for the groundwater

system but also relevant for several other hydrological and ecological systems (e.g., Pasho et al., 2010; Vicente-Serrano et al., 2011, 2012; López-Moreno et al., 2013; Vicente-Serrano et al., 2013; Haslinger et al., 2014; Bachmair et al., 2015; Van Loon, 2015).

3.3 Temporal evolution of SPI and SGI

5 Figure 5 shows the exemplary time series of the SGI and SPI at 6 and 12 months of the accumulation periods for all wells and grid cells and their respective spatial averages for an overlapping period of 1995–2006. The SGI estimates for both point and gridded data sets exhibited higher spatial variability that cannot be adequately represented by their respective SPIs regardless of the accumulation periods used. This points out the enhanced role of
10 soil, vegetation, and hydro-geological properties in propagating the precipitation signal through the subsurface. These observations are consistent with the findings of Weider and Boutt (2010) who also found that groundwater levels in New England have higher (spatial) variability in their responses than other hydro-meteorological variables including precipitation and streamflows.

15 The SPI and the SGI for large-scale drought events like that of 1996 and 2003 show a remarkable regional difference between German and Dutch wells (Fig. 5). A drought is defined when the indices (e.g., SPI) fall below a threshold (τ) value of 0.2. For instance, the regionally averaged SPI estimates indicate the most severe and extended (prolonged) droughts during the 1996 event for Dutch wells, which was not so strongly pronounced
20 at the German wells (Fig. 5). The opposite behavior was, however, noticed for the 2003 drought event, where the SPI pointed towards more severe drought situations at the German wells than at the Dutch wells. The regional differences were also apparent in the anomalies of groundwater heads (SGI) with German wells showing on average a relatively smoother groundwater response compared to the highly fluctuating and variable
25 groundwater anomalies at the Dutch wells (Fig. 5). In comparison to the SPI, the regionally averaged SGI exhibited far less severe drought conditions, although there were some wells at which the drought severity based on SGI and SPI were comparable (Fig. 5). This is in accordance with a well known phenomena of the drought attenuation while propagating

through sub-surface media and the groundwater compartment of the terrestrial water cycle (H. Hisdal and L. M. Tallaksen, 2000; Van Loon, 2015). Notably, the 1996 and the 2003 drought events that appeared in the averaged SPI at the Dutch and the German wells, respectively, were not strongly pronounced in their respective SGI estimates to characterize these events as severe large-scale groundwater droughts.

The above presented results underpin the inability of the SPI to satisfactorily track the drought events in the groundwater compartment even when applied at longer time scales. The propagation of precipitation signals to groundwater droughts is largely controlled by both catchment and climatic characteristics such as terrain, soil and geological properties, and precipitation seasonality, snowmelt timing, and atmospheric water supply and evaporative demand. This results in a pronounced spatial variation of hydrologic (groundwater) drought characteristics (see e.g., Peters et al., 2006; Bloomfield and Marchant, 2013; Haslinger et al., 2014; Vicente-Serrano et al., 2012; Teuling et al., 2013; Van Loon et al., 2014; Stoelzle et al., 2014; Van Loon, 2015). On the aspect of climatic variables, the SPI that fully accounts for the atmospheric water supply side does not include the effects of the evaporative water demand which could be a determining factor in a hydrologic (groundwater) drought analysis (Vicente-Serrano et al., 2010; Teuling et al., 2013). Another meteorological index such as the SPEI Vicente-Serrano et al. (2010) which accounts for both the atmospheric water supply and evaporative demand is expected to be better suited for characterizing hydrologic (groundwater) droughts. However, results of our preliminary investigation (not shown here) indicated that there is not much benefit in using the SPEI over the SPI for the groundwater drought analysis in the study regions. This could be because of the fact that these regions are characterized by a high precipitation variability which dominates over the influence of temperature variability (expressed in the evaporation term of the SPEI). We however recognise that both meteorological based drought indices may exhibit a slight difference during some specific (summer) months and time periods. We note that our study mainly focuses on assessing the skill of SPI and the evaluation of other drought indices (like SPEI or some model based indicators) which in itself would be an interesting research work is beyond the scope of current study.

3.4 Skill of the SPI to predict groundwater droughts

The skill of the SPI to predict groundwater droughts is assessed using the probabilistic scores based on the hit rate (H) and the false alarm ratio (F) (see Sect. 2.3 for a description of their estimation). The results shown in Fig. 6 for H indicate that for a drought threshold τ of 0.2, the SPI was only able to correctly predict three out of five ($H \geq 0.6$) SGI-based groundwater droughts at less than 12% of the German and 16% of the Dutch wells for any of the two uniform accumulation periods (6 and 12 months) of SPI. Even in the case of the SPI corresponding to the spatially varying optimal accumulation period (Fig. 6a), only 21 and 18% of the German and the Dutch wells exhibited an H score greater than 0.6, respectively. The low reliability of the groundwater drought predictions using the SPI was also confirmed from the F scores, shown in Fig. 7, for which at least three in every five events ($F > 0.6$) were wrongly predicted at around 50% of the wells for both uniform accumulation periods (6 and 12 months) of SPI. In this case, around 30% of the wells in both regions exhibited a high false alarm ratio ($F > 0.6$) for groundwater drought predictions using the SPI with the optimal accumulation periods (Fig. 7a).

Although the skill of the SPI for the gridded data sets was better than that of the well-specific ones, both the H and the F scores for the gridded data were far from their best scores (Figs. 6 and 7). Overall, the H score on average ranged between 0.52 and 0.58 for the optimal and uniform accumulation periods of SPI, and the corresponding F score varied between 0.44 and 0.50. These results clearly highlight the limited skill of the gridded SPI to capture regional scale groundwater droughts with either optimal or uniform accumulation periods of SPI. Furthermore, the grid cells for which the SPI and SGI is constructed based on the point scale data of very few underlying wells (< 3) exhibited a slightly lower H (and higher F) scores compared to the others. This lower correspondence between SPI (optimal) and SGI was noticed in a few grid cells (7 out of a total 69 cells). For the remaining grid cells, there was no systematic pattern of improvement or deterioration in the skill scores with the increasing number of underlying wells, which indicated that the difference in number of

underlying wells among the grid cells had a relatively minor to no effect on the results presented here for the regional scale groundwater drought analysis.

Results of the further analysis for predicting more severe and extreme groundwater drought conditions also revealed a significantly poor skill of the SPI at both point and grid scales (Fig. 8). For example, the 6 and 12 months of uniform accumulation period based SPI predictions for the severe groundwater drought conditions ($\tau = 0.1$) exhibited an average hit rate H of around 0.26 (i.e., only one in every four events is correctly predicted) for the point data sets, and around 0.33 (i.e., only one in every three events is correctly predicted) for the gridded data sets. The corresponding average F score was quite high around 0.79 (i.e., nearly four in every five events predicted are false alarms) and 0.67 (i.e., two in every three events predicted are false alarms), respectively. Even with the spatially varying optimal accumulation period, the overall skill of the SPI was poor, with an average H score of 0.30 and 0.39 for the point and the gridded data sets, respectively. The corresponding F score was 0.72 and 0.60, respectively.

The performance of the SPI further deteriorated drastically for the predictions of the extreme groundwater drought conditions ($\tau = 0.05$), regardless of the accumulation periods and spatial resolution of the data sets (Fig. 8). These results highlighted the limited reliability of the SPI for predicting groundwater droughts at different severity levels. Among other things, these levels are used for watching (or tracking) the onset, development, and termination of drought events – essential elements to any effective drought monitoring system (e.g., USDM). The skillful predictions of these drought conditions are of critical importance because planners and water managers need to know for example the onset of droughts to take appropriate drought mitigative actions to reduce damages (Hayes et al., 2010).

4 Conclusions

In this study we assessed the ability of the precipitation based drought index (SPI) to characterize groundwater droughts at more than 2000 wells located in two regions in

Germany and the Netherlands. These two groundwater networks consisting of a large number of wells and available records allowed us to quantitatively evaluate the skill of the SPI for groundwater drought monitoring at a local and regional scale using the well-specific and the 0.5° gridded data sets, respectively. On the basis of this data-based exploratory analysis, we found that the precipitation needs to be accumulated over several (3–24) months to (temporally) align the SPI with the SGI time series at both local and regional scales, reflecting the significantly smoothed response of groundwater to precipitation signals. Despite this alignment and with a relatively fair degree of correlation, the SPI lacked the skill to predict groundwater droughts based on SGI. The necessary accumulation periods varied considerably in space however and were not known beforehand. We found that the thickness of the unsaturated zone (expressed here as the average depth to the water table) partly but not entirely controlled the spatial variation of the accumulation period. The groundwater levels at the wells located in relatively deeper aquifers exhibited on average stronger correlation with longer time scale SPI, and vice-versa. There was, however, a considerable noise in this relationship and further studies are required to investigate the possible role of other land-surface and hydro-geological properties including aquifer storage and transmission characteristics.

The application of the uniform accumulation periods over the entire domain significantly reduces the correlation between SPI and SGI indicating the limited applicability of SPI as a proxy for groundwater droughts even at long accumulation times. The differences between the SGI and SPI at both point and gridded data sets were substantially high and generally comparable to the often used threshold value ($\tau = 0.2$) to classify droughts. Based on the results of this multiscale analyses, the assumption of an average smoothing of precipitation to mimic groundwater response during droughts is highly unrealistic.

Depending on the region, the severity of SPI-based drought events differed greatly from those based on the SGI. In some cases the SPI-based extreme droughts (e.g., 1996 or 2003) only showed up in some groundwater wells but not in the spatially-averaged SGI, indicating the enhanced role of the subsurface medium in modulating the precipitation signal. Future studies may look into disentangling the roles of the individual subsurface

medium attributes and climatic factors. The predictions of groundwater droughts at different severity levels are crucial for water utilities and regulators for planning (e.g., management of abstraction rates and tariffs, etc) and decision making (e.g., restricting water usage and rationing). The results of the probabilistic scores based on the hit rate and the false alarm ratio clearly indicated the inability of the SPI to capture these aspects of drought conditions, and would therefore be inadequate for monitoring and planning purposes. While these categorical contingency table based skill scores clearly outlined the limitations of the SPI to detect the SGI based groundwater drought events, more insights could be gained by analyzing the differences among different drought characteristics (e.g., duration, severity and maximum intensity) derived based on the SPI and SGI time series. Future studies may therefore look into these aspects.

In addition to the analysis focusing on the correspondence between SPI and SGI over their entire ranges $[0, 1]$, representing both dry and wet conditions, we put specific emphasis on assessing the skill of the SPI to predict groundwater drought conditions at different severity levels (i.e., $SGI \leq 0.2$ or 0.1 or 0.05). These analyses have allowed us to gain more insights into the limitations of a precipitation-based drought index to properly identify the groundwater droughts. Based on the results obtained in this study, the hypothesis that the observation-based SPI can adequately predict groundwater droughts could not be supported for the analyzed point and gridded data sets.

The evidence presented in this study regarding the inability of the SPI to characterize groundwater drought events at both local and regional scales calls for a different observation-based indicator like the SGI. If for data availability reasons, the precipitation-based drought indicator is used for groundwater drought studies, the aforementioned limitations should be borne in mind. We stress the need for putting more efforts in the collection and collation of groundwater data, so that groundwater observations become available on global scale to characterize groundwater drought and the availability of subsurface water resources during drought, at spatial scales small enough to be relevant for water resources management. Finally, in this study we screened our observational wells to keep minimal human influence on groundwater levels, but we note that anthropogenic

changes in land use and water use in most of the world today are contributing to the discrepancy between SPI and SGI. This human influence can and should not be disregarded by only using SPI to characterise hydrological drought because it creates a false image of the drought situation on the ground and its impact on people (Van Loon et al., 2016)

Acknowledgements. We are grateful to the Bavarian Environment Agency (LfU Bayern) and the State Institute for Environment, Measurements and Nature Conservation Baden-Württemberg (LUBW) who provided the southern Germany groundwater data sets for use in GLOWA-Danube (www.glowa-danube.de), a project funded by the German Ministry of Education and Research (BMBF); and the German Weather Service (DWD) for providing the precipitation data for Germany. We also wish to thank the Royal Netherlands Meteorological Institute (KNMI) in De Bilt, the Netherlands (www.knmi.nl/index_en.html) for providing the precipitation data and the Dutch institute TNO (www.dinoloket.nl/) for the Dutch groundwater level data. The Dutch authors were partly funded by the EU-FP7 project DROUGHT-R&SPI (contract no. 282769). This paper supports the work of the UNESCO-IHP VIII FRIEND programme and the Helmholtz Climate Initiative REKLIM project.

The article processing charges for this open-access publication were covered by a Research Centre of the Helmholtz Association.

References

- AghaKouchak, A., Farahmand, A., Melton, F. S., Teixeira, J., Anderson, M. C., Wardlow, B. D., and Hain, C. R.: Remote sensing of drought: Progress, challenges and opportunities, *Reviews of Geophysics*, 53, 452–480, 2015.
- Andreadis, K. M., Clark, E. A., Wood, A. W., Hamlet, A. F., and Lettenmaier, D. P.: Twentieth-Century Drought in the Conterminous United States, *J. Hydrometeorol.*, 6, 985–1001, 2005.
- Bachmair, S., Kohn, I., and Stahl, K.: Exploring the link between drought indicators and impacts, *Natural Hazards and Earth System Sciences*, 15, 1381–1397, 2015.

- Barthel, R.: An indicator approach to assessing and predicting the quantitative state of groundwater bodies on the regional scale with a special focus on the impacts of climate change, *Hydrogeology Journal*, 19, 525–546, 2011.
- 5 Bloomfield, J. P. and Marchant, B. P.: Analysis of groundwater drought building on the standardised precipitation index approach, *Hydrol. Earth Syst. Sci.*, 17, 4769–4787, 2013.
- Damberg, L. and AghaKouchak, A.: Global trends and patterns of drought from space, *Theoretical and Applied Climatology*, 117, 441–448, 2014.
- Eltahir, E. A. B. and Yeh, P. J.-F.: On the asymmetric response of aquifer water level to floods and droughts in Illinois, *Water Resources Research*, 35, 1199–1217, 1999.
- 10 Famiglietti, J. S.: The global groundwater crisis, *Nature Clim. Change*, 4, 945–948, 2014.
- Fan, Y., Li, H., and Miguez-Macho, G.: Global Patterns of Groundwater Table Depth, *Science*, 339, 940–943, 2013.
- Folland, C. K., Hannaford, J., Bloomfield, J. P., Kendon, M., Svensson, C., Marchant, B. P., Prior, J., and Wallace, E.: Multi-annual droughts in the English Lowlands: a review of their characteristics and climate drivers in the winter half-year, *Hydrology and Earth System Sciences*, 19, 2353–2375, 2015.
- 15 Gelhar, L. W.: *Stochastic Subsurface Hydrology*, Prentice-Hall, NJ, USA, 1993.
- Gudmundsson, L., Tallaksen, L. M., Stahl, K., Clark, D. B., Dumont, E., Hagemann, S., Bertrand, N., Gerten, D., Heinke, J., Hanasaki, N., Voss, F., , and Koirala, S.: Comparing large-scale hydrological model simulations to observed runoff percentiles in Europe, *J. Hydrometeor.*, 13, 604–620, 2012.
- 20 Guttman, N. B.: Accepting the standardized precipitation index: A calculation algorithm, *J. Am. Water Resour. As.*, 35, 311–322, 1999.
- H. Hisdal and L. M. Tallaksen: Drought event definition, Tech. Rep. 6, ARIDE, University of Oslo, Norway, 2000.
- 25 Hao, Z., AghaKouchak, A., Nakhjiri, N., and Farahmand, A.: Global integrated drought monitoring and prediction system., *Scientific data*, 1, 1–10, 2014.
- Haslinger, K., Koffler, D., Schoener, W., and Laaha, G.: Exploring the link between meteorological drought and streamflow: Effects of climate- catchment interaction, *Water Resour. Res.*, 50, 2468–2487, 2014.
- 30 Hayes, M., Svoboda, M., Wall, N., and Widhalm, M.: The Lincoln Declaration on Drought Indices: Universal Meteorological Drought Index Recommended, *Bull. Amer. Meteor. Soc.*, 92, 485–488, 2010.

- Joetzjer, E., Douville, H., Delire, C., Ciais, P., Decharme, B., and Tyteca, S.: Hydrologic benchmarking of meteorological drought indices at interannual to climate change timescales: a case study over the Amazon and Mississippi river basins, *Hydrol. Earth Syst. Sci.*, 17, 4885–4895, 2013.
- 5 Kraijenhoff-van de Leur, D.: A study of non-steady groundwater flow with special reference to a reservoir coefficient, *Ingenieur*, 70, 87–94, 1958.
- Lana, X., Serra, C., and Burgueño, A.: Patterns of monthly rainfall shortage and excess in terms of the standardized precipitation index for Catalonia (Spain), *Int. J. Climatol.*, 21, 1669–1691, 2001.
- Li, B. and Rodell, M.: Evaluation of a model-based groundwater drought indicator in the conterminous U.S., *J. Hydrol.*, 526, 78–88, 2015.
- 10 López-Moreno, J. I., Vicente-Serrano, S. M., Zabalza, J., Beguería, S., Lorenzo-Lacruz, J., Azorin-Molina, C., and Moran-Tejeda, E.: Hydrological response to climate variability at different time scales: A study in the Ebro basin, *Journal of Hydrology*, 477, 175–188, 2013.
- McKee, T. B., Doesken, N. J., and Kleist, J.: The relationship of drought frequency and duration to time scales, Eighth Conference on Applied Climatology, Anaheim, California, 17-22 January 1993, 1993.
- 15 Mishra, A. K. and Singh, V. P.: A review of drought concepts, *J. Hydrol.*, 391, 202–216, 2010.
- Mo, K. C. and Lettenmaier, D. P.: Objective Drought Classification Using Multiple Land Surface Models, *J. Hydrometeorol.*, 15, 990–1010, 2013.
- 20 Nickel, D., Barthel, R., and Braun, J.: Large-scale water resources management within the framework of GLOWA-Danube - The water supply model, *Physics and Chemistry of the Earth, Parts A/B/C*, 30, 383–388, 2005.
- Nijssen, B., Shukla, S., Lin, C., Gao, H., Zhou, T., Ishottama, Sheffield, J., Wood, E. F., and Lettenmaier, D. P.: A Prototype Global Drought Information System Based on Multiple Land Surface Models, *J. Hydrometeorol.*, 15, 1661–1676, 2014.
- 25 Pasho, E., Camarero, J. J., de Luis, M., and Vicente-Serrano, S. M.: Impacts of drought at different time scales on forest growth across a wide climatic gradient in north-eastern Spain, *Agricultural and Forest Meteorology*, 151, 1800–1811, 2010.
- Peters, E., Torfs, P. J. J. F., van Lanen, H. A. J., and Bier, G.: Propagation of drought through groundwater - a new approach using linear reservoir theory, *Hydrol. Process.*, 17, 3023–3040, 2003.
- 30 Peters, E., van Lanen, H. A. J., Torfs, P. J. J. F., and Bier, G.: Drought in groundwater-drought distribution and performance indicators, *J. Hydrol.*, 306, 302–317, 2005.

- Peters, E., Bier, G., van Lanen, H. A. J., and Torfs, P. J. J. F.: Propagation and spatial distribution of drought in a groundwater catchment, *J. Hydrol.*, 321, 257–275, 2006.
- Prudhomme, C., Giuntoli, I., Robinson, E. L., Clark, D. B., Arnell, N. W., Dankers, R., Fekete, B. M., Franssen, W., Gerten, D., Gosling, S. N., Hagemann, S., Hannah, D. M., Kim, H., Masaki, Y., Satoh, Y., Stacke, T., Wada, Y., and Wisser, D.: Hydrological droughts in the 21st century, hotspots and uncertainties from a global multimodel ensemble experiment, *Proceedings of the National Academy of Sciences*, 111, 3262–3267, 2014.
- Samaniego, L., Kumar, R., and Zink, M.: Implications of Parameter Uncertainty on Soil Moisture Drought Analysis in Germany, *J. Hydrometeor.*, 14, 47–68, 2013.
- Seneviratne, S. I., Nicholls, N., Easterling, D., Goodess, C., Kanae, S., Kossin, J., Luo, Y., Marengo, J., McInnes, K., Rahimi, M., Reichstein, M., Sorteberg, A., Vera, C., and Zhang, X.: Changes in climate extremes and their impacts on the natural physical environment, in: *Managing the Risks of Extreme Events and Disasters to Advance Climate Change Adaptation. A Special Report of Working Groups I and II of the Intergovernmental Panel on Climate Change*, edited by Field, C. B., Barros, V., Stocker, T., Qin, D., Dokken, D., Ebi, K., Mastrandrea, M., Mach, K., Plattner, G.-K., S.K. Allen, M. T., and Midgley, P., pp. 167–172, Cambridge University Press, Cambridge, UK, and New York, NY, USA, 582pp., 2012.
- Sheffield, J. and Wood, E. F.: Drought: Past problems and future scenarios, *Earthscan*, 2011.
- Sheffield, J., Goteti, G., Wen, F., and Wood, E. F.: A simulated soil moisture based drought analysis for the United States, *J. Geophys. Res.*, 109, D24 108, 2004.
- Stoelzle, M., Stahl, K., Morhard, A., and Weiler, M.: Streamflow sensitivity to drought scenarios in catchments with different geology, *Geophys. Res. Lett.*, 41, 6174–6183, 2014.
- Tallaksen, L., Hisdal, H., and Lanen, H. V.: Space-time modelling of catchment scale drought characteristics, *J. Hydrol.*, 375, 363–372, 2009.
- Tallaksen, L. M. and Stahl, K.: Spatial and temporal patterns of large-scale droughts in Europe: Model dispersion and performance, *Geophys. Res. Lett.*, 41, 429–434, 2014.
- Tallaksen, L. M. and Van Lanen, H. A. J.: *Hydrological Drought: Processes and Estimation Methods for Streamflow and Groundwater*, *Developments in Water Sciences*, Elsevier BV, the Netherlands, 2004.
- Tallaksen, L. M., Hisdal, H., and van Lanen, H. A. J.: Propagation of drought in a groundwater fed catchment, the Pang in the UK, in: *Climate variability and change: Hydrological Impacts*, edited by Demuth, S., Gustard, A., Planos, E., Scatena, F., and Servat, E., vol. 308, pp. 128–

- 133, International Association of Hydrological Sciences (IAHS), 5th FRIEND World Conference Havana, Cuba, November 2006, Wallingford, UK, IAHS Publication, 2006.
- ten Broek, J., Teuling, A. J., and Van Loon, A. F.: Comparison of drought indices for the province of Gelderland, the Netherlands, Tech. Rep. 16, DROUGHT-R and SPI, 2014.
- 5 Teuling, A. J., Van Loon, A. F., Seneviratne, S. I., Lehner, I., Aubinet, M., Heinesch, B., Bernhofer, C., Grünwald, T., Prasse, H., and Spank, U.: Evapotranspiration amplifies European summer drought, *Geophys. Res. Lett.*, 40, 2071–2075, 2013.
- van Huijgevoort, M. H. J., Hazenberg, P., van Lanen, H. A. J., Teuling, A. J., Clark, D. B., Folwell, S., Gosling, S. N., Hanasaki, N., Heinke, J., Koirala, S., Stacke, T., Voss, F., Sheffield, J., and Uijlenhoet, R.: Global Multimodel Analysis of Drought in Runoff for the Second Half of the
10 Twentieth Century, *J. Hydrometeor.*, 14, 1535–1552, 2013.
- Van Loon, A. F.: Hydrological drought explained, *Wiley Interdisciplinary Reviews: Water*, 2, 359–392, 2015.
- Van Loon, A. F., van Huijgevoort, M. H. J., and Van Lanen, H. A. J.: Evaluation of drought propagation
15 in an ensemble mean of large-scale hydrological models, *Hydrol. Earth Syst. Sci.*, 16, 4057–4078, 2012.
- Van Loon, A. F., Tjeldeman, E., Wanders, N., Van Lanen, H., Teuling, A. J., and Uijlenhoet, R.: How climate seasonality modifies drought duration and deficit, *Journal of Geophysical Research: Atmospheres*, 119, 4640–4656, 2014.
- 20 Van Loon, A. F., Gleeson, T., Clark, J., van Dijk, A. I. J. M., Stahl, K., Hannaford, J., Di Baldassarre, G., Teuling, A. J., Tallaksen, L. M., Uijlenhoet, R., Hannah, D. M., Sheffield, J., Svoboda, M., Verbeiren, B., Wagener, T., Rangecroft, S., Wanders, N., and Van Lanen, H. A. J.: Drought in the Anthropocene, *Nature Geoscience*, 9, 89–91, 2016.
- Vicente-Serrano, S. M., Begueria, S., and López-Moreno, J. I.: A Multiscalar Drought Index Sensitive
25 to Global Warming: The Standardized Precipitation Evapotranspiration Index, *Journal of Climate*, 23, 1696–1718, 2010.
- Vicente-Serrano, S. M., Begueria, S., and López-Moreno, J. I.: Comment on “Characteristics and trends in various forms of the Palmer Drought Severity Index (PDSI) during 1900–2008” by Aiguo Dai, *Journal of Geophysical Research*, 116, D19 112, 2011.
- 30 Vicente-Serrano, S. M., Begueria, S., Lorenzo-Lacruz, J., Camarero, J. J., López-Moreno, J. I., Azorin-Molina, C., Revuelto, J., Morán-Tejeda, E., and Sanchez-Lorenzo, A.: Performance of Drought Indices for Ecological, Agricultural, and Hydrological Applications, *Earth Interactions*, 16, 1–27, 2012.

- Vicente-Serrano, S. M., Gouveia, C., Camarero, J. J., Begueria, S., Trigo, R., López-Moreno, J. I., Azorin-Molina, C., Pasho, E., Lorenzo-Lacruz, J., Revuelto, J., Morán-Tejeda, E., and Sanchez-Lorenzo, A.: Response of vegetation to drought time-scales across global land biomes., *Proceedings of the National Academy of Sciences*, 110, 52–57, 2013.
- 5 Vidal, J. P., Martin, E., Franchistéguy, L., Habets, F., Subeyroux, J. M., Blanchard, M., and Baillon, M.: Multilevel and multiscale drought reanalysis over France with the Safran-Isba-Modcu hydrometeorological suite, *Hydrol. Earth Syst. Sci.*, 14, 459–478, 2010.
- Wanders, N., Wada, Y., and Van Lanen, H. A. J.: Global hydrological droughts in the 21st century under a changing hydrological regime, *Earth System Dynamics*, 6, 1–15, 2015.
- 10 Weider, K. and Boutt, D. F.: Heterogeneous water table response to climate revealed by 60 years of ground water data, *Geophysical Research Letters*, 37, 1–6, 2010.
- Wilhite, D. A.: Drought as a natural hazard: Concepts and definitions, in: *Drought: A Global Assessment*, edited by Wilhite, D. A., pp. 3–18, *Routledge Hazards and Disasters Series Vol. 2*, 2000.
- 15 Wilks, D. S.: *Statistical Methods in the Atmospheric Sciences*, Academic Press, 2011.

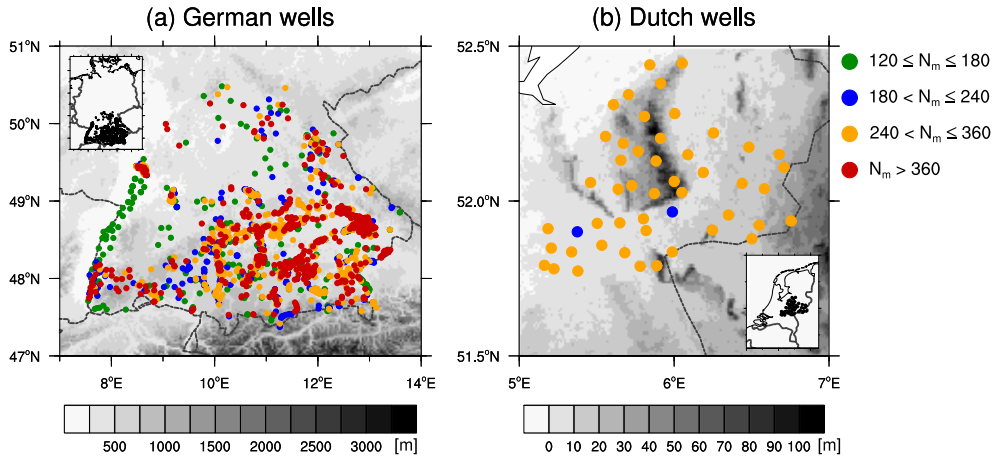


Figure 1. The locations of (a) German and (b) Dutch wells overlaid on the respective terrains. The marker colors show the number of months N_m with available records during the periods 1950–2013 and 1988–2013 for German and Dutch wells, respectively.

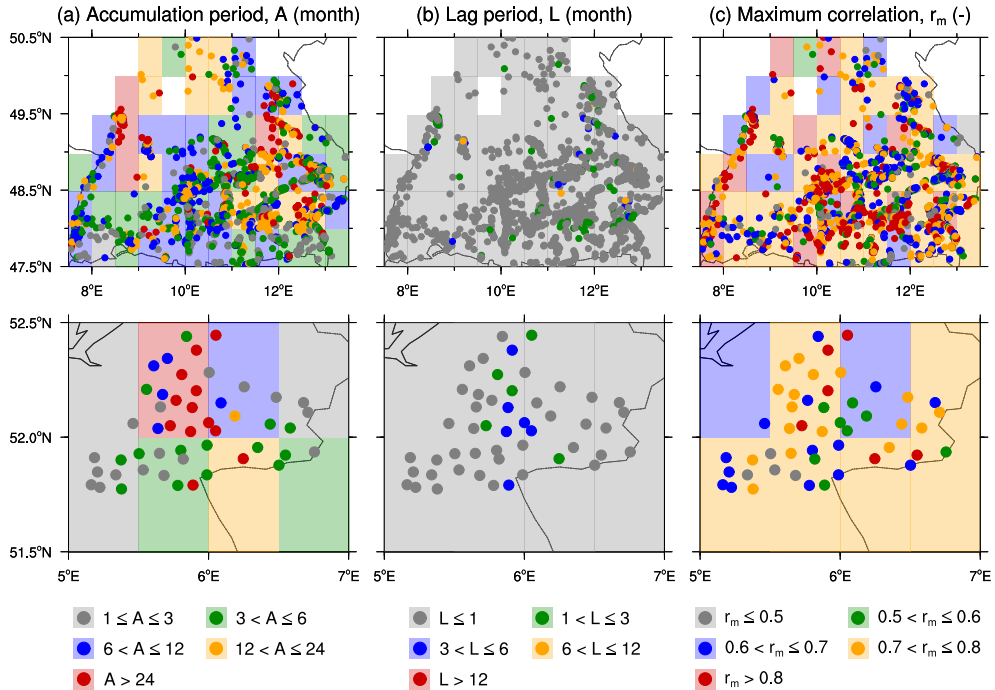


Figure 2. The (a) optimal accumulation A (month) and (b) lag periods L (month) required to obtain the (c) maximum correlation r_m (-) between the SGI and SPI at point and gridded (0.5°) scales for German (top) and Dutch (bottom) data sets.

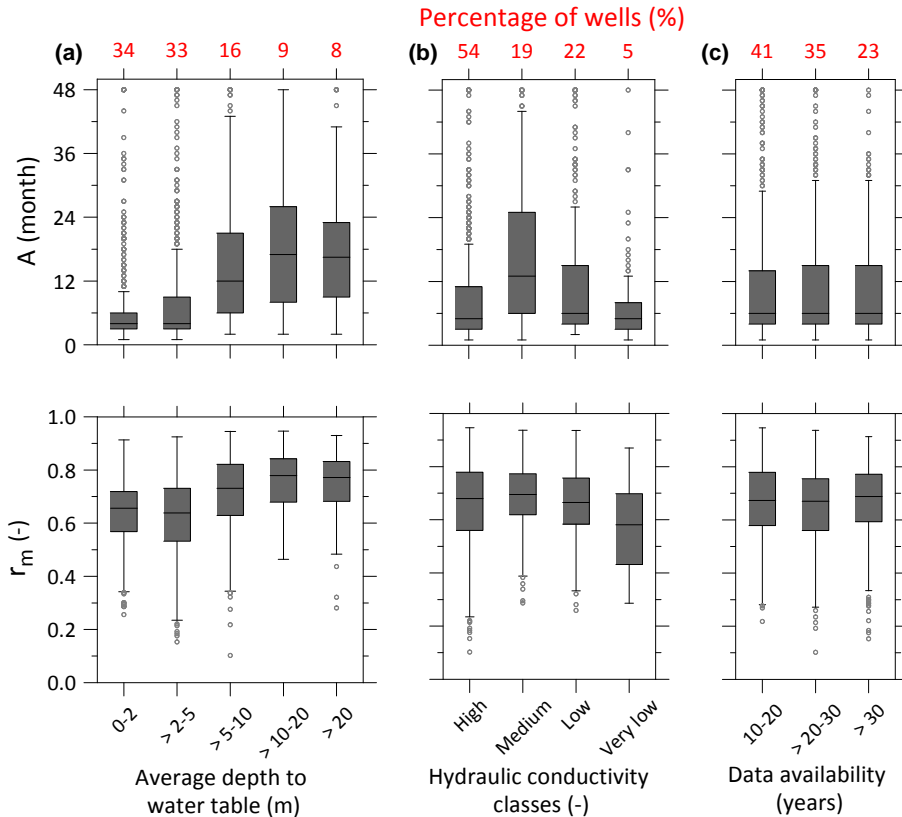


Figure 3. Box-and-whisker plots of the optimal accumulation period A (top) and the maximum correlation r_m (bottom) estimated for a group of wells with varying depth to water table (left: **a**), aquifer hydraulic conductivity classes (middle: **b**), and record lengths (right: **c**). Results shown for the aquifer hydraulic conductivity correspond to the German wells are grouped into four distinct classes: high ($> 10^{-3}$ m/s), medium (10^{-3} – 10^{-5} m/s), low (10^{-5} – 10^{-7} m/s), and very low ($< 10^{-7}$ m/s). The percentage of wells falling within each group is indicated at the top of every plot.

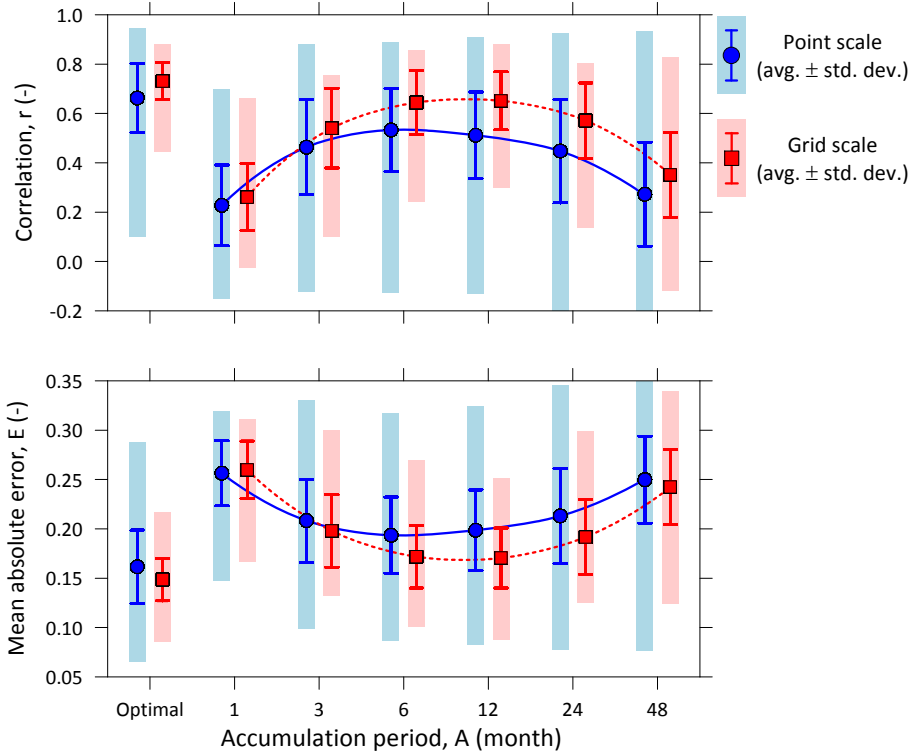


Figure 4. The correlation r (top) and the mean absolute error E (bottom) estimated between the SGI and SPI of the 1, 3, 6, 12, 24, and 48 months of uniform accumulations for the point and the gridded data sets. Their respective maximum (r_m) and the minimum (E_m) estimates corresponding to the optimal accumulation periods of SPI are also shown in the leftmost of the panels. Summary statistics are provided as an average \pm one standard deviation, and the entire range is depicted as filled bars in the background.

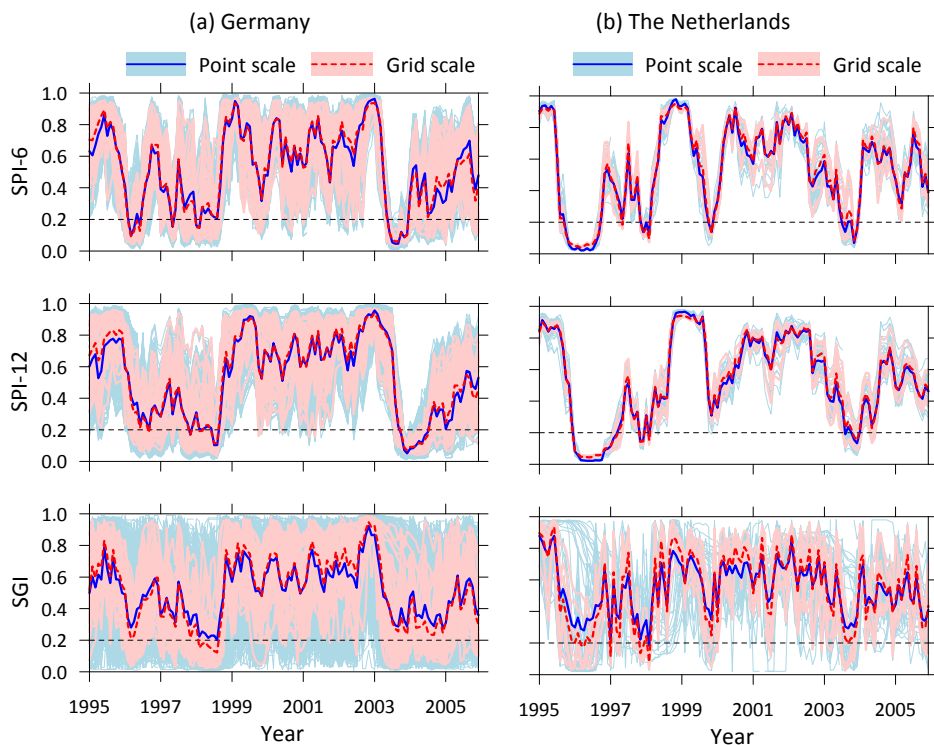


Figure 5. The monthly time series of the 6 and 12 month point (light blue) and gridded (light pink) SPI and the respective spatial averages (dark blue and dark red) for **(a)** German and **(b)** Dutch data sets. The bottom plots are the corresponding SGI time series and their spatial averages. The black dashed line depicts the drought threshold τ of 0.2.

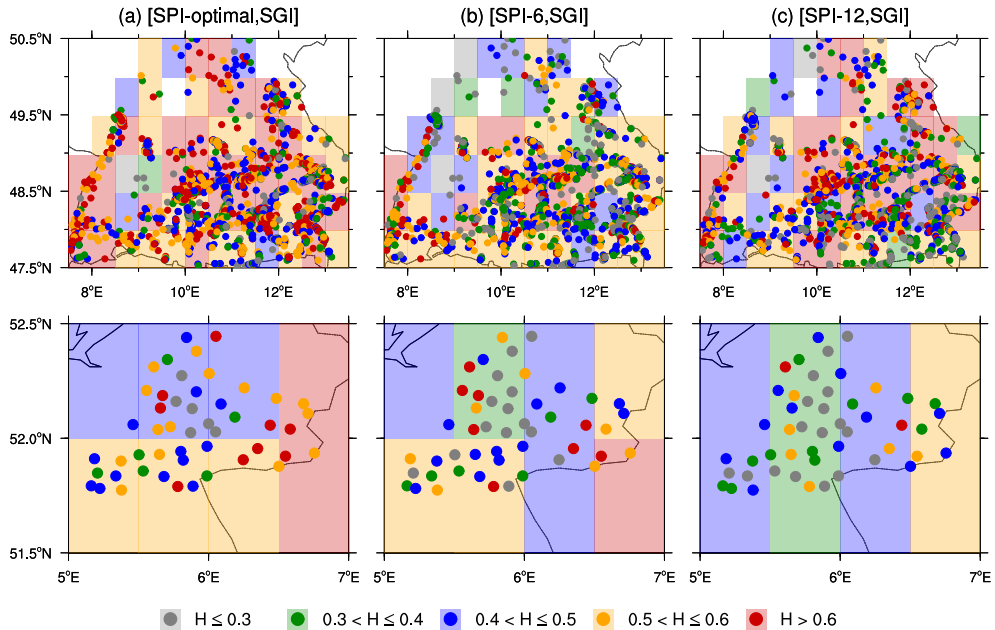


Figure 6. The hit rate (H) to detect SGI based groundwater droughts using the SPI with the (a) optimal accumulation period and (b, c) 6 and 12 months of uniform accumulation periods at the point and gridded scales for German (top) and Dutch (bottom) data sets. A threshold value τ of 0.2 is used to identify drought events.

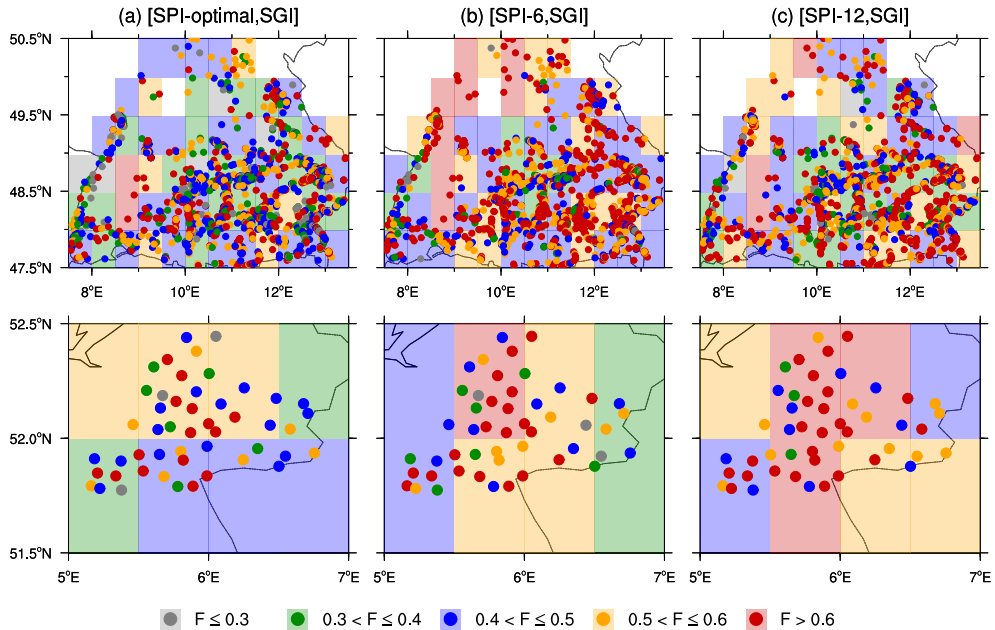


Figure 7. The false alarm ratio (F) to detect SGI based groundwater droughts using the SPI with the (a) optimal accumulation period and (b, c) 6 and 12 months of uniform accumulation periods at the point and gridded scales for German (top) and Dutch (bottom) data sets. A threshold value τ of 0.2 is used to identify drought events.

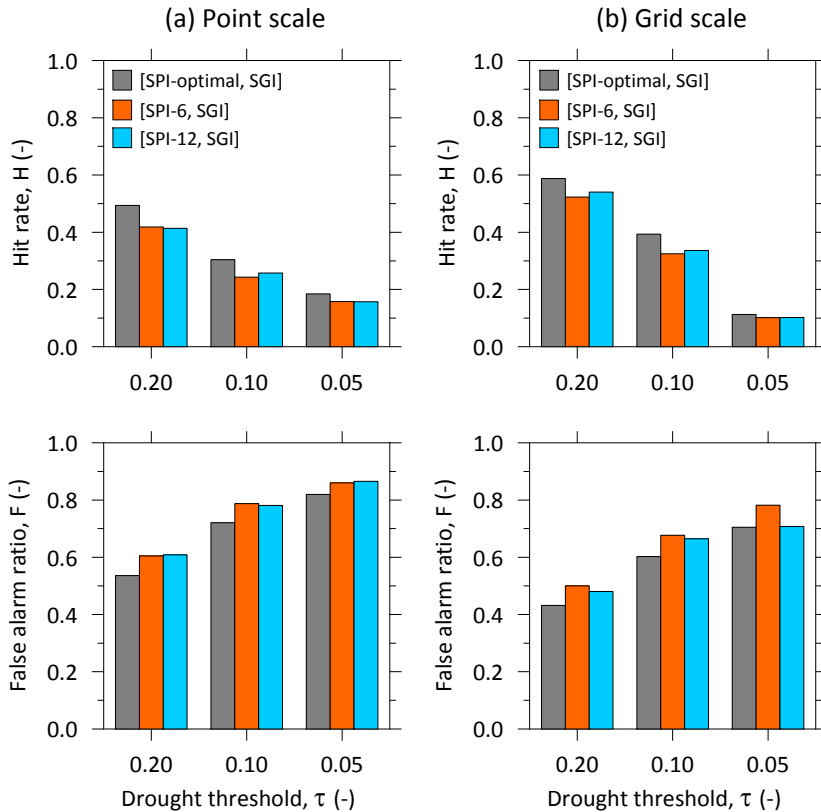


Figure 8. The hit rate (H) and the false alarm ratio (F) averaged over all investigated (a) wells and (b) grid cells to detect SGI based groundwater droughts using the SPI with the optimal accumulation and 6 and 12 months of uniform accumulation periods for varying levels of threshold value τ (0.2, 0.1, and 0.05) used to identify drought events.