

**Importance of maximum snow accumulation for summer
low flows in humid catchments**

M. Jenicek¹, J. Seibert^{2, 3}, M. Zappa⁴, M. Staudinger², T. Jonas⁵

[1]{Charles University in Prague, Faculty of Science, Department of Physical Geography and
Geoecology, Prague, Czech Republic}

[2]{University of Zurich, Department of Geography, Switzerland}

[3]{Uppsala University, Department of Earth Sciences, Sweden}

[4]{Swiss Federal Institute for Forest, Snow and Landscape Research WSL, Switzerland}

[5]{WSL Institute for Snow and Avalanche Research SLF, Switzerland}

Correspondence to: M. Jenicek (michal.jenicek@natur.cuni.cz)

Abstract

The expected increase of air temperature will increase the ratio of liquid to solid precipitation during the cold season and, thus decrease the amount of snow storage, especially in mid-elevation mountain ranges across Europe. The decrease of snow will affect soil and groundwater storages during spring and might cause low streamflow values in the subsequent warm season. To evaluate these potential climate change impacts, we investigated the effects of inter-annual variations in snow accumulation on summer low flow. We worked towards 1) quantifying how long snowmelt affects runoff after melt-out and 2) estimating the sensitivity of catchments with different elevation ranges to changes in snowpack. To find suitable predictors of summer low flow we used long time series from 14 alpine and pre-alpine catchments in Switzerland and computed different variables quantifying winter and spring snow conditions. In general, the results indicated that maximum winter snow water equivalent (SWE) influenced summer low flow, but could expectedly only partly explain the observed inter-annual variations. On average, every decrease of maximum SWE by 10% caused a decrease of minimum discharge in July by 6% to 9% in catchments higher than 2000 m a.s.l. Towards later summer and in lower elevation catchments this effect is reduced. Considering years with below-average SWE maximum, the minimum discharge decreased to 75% of its normal level. Additionally, a reduction in SWE resulted in earlier low flow occurrence. One other important factor was the precipitation between maximum SWE and summer low flow. When only dry preceding conditions in this period were considered, the importance of maximum SWE as a predictor of low flows increased. We assessed the sensitivity of individual catchments to the change of maximum SWE using the non-parametric Theil-Sen approach as well as an elasticity index. Both sensitivity indicators increased with increasing mean catchment elevation indicating a higher sensitivity of summer low flow to snow accumulation in alpine catchments compared to lower elevation pre-alpine catchments.

1 Introduction

The shift from snowfall to rain is one of the most important effects of predicted climate change on the hydrological cycle (Feng and Hu, 2007; Laghari et al., 2012; Berghuijs et al., 2014; Zhang et al., 2015). This shift results in a decrease of the fraction of solid precipitation (snow/total precipitation, known as S/P) and thus in a decrease of snow accumulation especially in mid-elevation mountain ranges (Knowles et al., 2006; Pellicciotti et al., 2010; Speich et al.,

2015). The decrease of S/P will affect groundwater recharge during spring and as a consequence also low streamflow values in the subsequent summer period (Bavay et al., 2009; Godsey et al., 2014).

For the western US the decrease of S/P in low and middle elevations during the last decades could be explained mainly by an increase of air temperature during wet days in winter (cold season) (Knowles et al., 2006). The simultaneous change in winter precipitation amount for that region explained only a minor part of the decrease in S/P (Feng and Hu, 2007). The largest decrease in S/P was found in March for the whole study region and additionally in January near the West Coast with generally higher air temperature during winter (Knowles et al., 2006). This lead to the conclusion that an air temperature increase from December to March had the largest impact on snow accumulation, while warming from April to June rather affected snowmelt onset, dynamics and melt-out (point in time at which all snow melt out of the catchment) (Knowles et al., 2006; Feng and Hu, 2007).

Serquet et al. (2011) used the ratio of snowfall days and precipitation days (SD/PD) to assess the effect of air temperature increase on snowfall in Switzerland. They found decreased SD/PD over the last three decades especially in lower elevations, i.e. at regions with air temperatures close to the melting point. The decrease in SD/PD was stronger in spring than in winter (Serquet et al., 2011).

Berghuijs et al. (2014) showed that a higher fraction of precipitation fallen as snow is associated with higher long-term mean streamflow in comparison to catchments with lower snowfall fraction. Higher air temperatures during spring affect the onset of snowmelt in streamflow shifting it towards earlier spring (Barnett et al., 2005; Dankers and Christensen, 2005; Lundquist and Flint, 2006; Hanel et al., 2012; Godsey et al., 2014; Langhammer et al., 2015). These changes lead to a higher fraction of annual flow occurring earlier in the water year as evident from many studies across the western US (Cayan et al., 2001; Stewart et al., 2005; Day, 2009). However, snowmelt and consequent spring streamflow are affected by a wide range of factors, such as topography, vegetation and connected radiation as well as shading effects which might overlay the effect of increasing air temperature (Jost et al., 2007; Jenicek et al., 2012; Pomeroy et al., 2012; Kucerovala and Jenicek, 2014). Earlier onset of snowmelt could, for instance, be slowed down by less shortwave radiation due to lower sun inclination in early spring (Lundquist and Flint, 2006).

1 While an increase of mean monthly runoff and low flows during winter and spring months were
2 documented in several catchments in Switzerland and in other central European countries
3 (Birsan et al., 2005; Fiala et al., 2010; Kliment et al., 2011), a significant decreasing trend of
4 mean monthly discharge during winter was detected at selected mountain catchments in
5 Slovakia (Blahusiakova and Matouskova, 2015).

6 Speich et al. (2015) demonstrated the sensitivity of catchments in the Swiss Alps to a reduction
7 of snow contribution to total runoff by applying bivariate-mapping techniques. The
8 combination of total runoff and snowmelt appeared to be more sensitive to predicted future
9 changes of air temperature and precipitation than the combination of precipitation and potential
10 evapotranspiration (Speich et al. 2015). Additionally, the elevation band between 1000 and
11 2500 m a.s.l. was found to be relatively more sensitive to future temperature and precipitation
12 scenarios than lower elevation bands. Further, Zappa and Kan (2007) demonstrated that the
13 presence of above-average snow resources contributed to mitigating the effects of the 2003
14 summer drought in some high-elevation areas within the Swiss Alps.

15 Snow conditions in winter can effect low flows during the subsequent summer especially in
16 areas with large differences in winter and summer precipitation. The total amount of snow
17 precipitation in winter affects groundwater recharge and hence also runoff during dry summer
18 periods (Earman et al., 2006; Beaulieu et al., 2012; Van Loon et al., 2015). While
19 meteorological drivers and overall catchment storage both affect the drought duration during
20 summer, seasonal storage in snow and glaciers affect the drought deficit (Van Loon and Laaha,
21 2015). However, snow cannot solely explain the sensitivity to drought, although higher
22 elevation catchments in the Swiss Alps were found to be less sensitive to drought origin
23 (Staudinger et al., 2015). Additionally, some modelling experiments suggested larger
24 groundwater storages in higher elevation Swiss catchments which may additionally explain the
25 lower sensitivity of higher elevation catchments to low flows (Staudinger and Seibert, 2014).

26 Based on historical records from selected Sierra Nevada catchments in the western USA, every
27 10% decrease in snow water equivalent maximum in spring leads to a decrease of 9-22% in
28 minimum runoff during summer months and the runoff minimum occurs about 3-7 days earlier
29 (Godsey et al., 2014). Higher elevation catchments showed a longer memory to previous
30 seasons climate variability than lower elevation catchments (Cayan et al., 1993) and some
31 catchments in the Sierra Nevada mountains were affected by the snowpack of the preceding
32 year during the subsequent summer runoff (Godsey et al., 2014).

The above mentioned studies show that the influence of snow amount on early spring discharge is widely studied and known. However, we still lack a quantitative assessment of the sensitivity of summer low flows on snow conditions from the preceding winter. In this study we want 1) to quantify how long snowmelt affects runoff after melt-out and 2) to estimate the sensitivity of the catchments to changes in snowpack. We benefit from a recently generated SWE dataset which allowed for an in-depth analysis of snowpack changes and detection of melt-out dates. Our study adds to earlier studies, by focusing on the combined effect of snow and liquid precipitation during the warm period and its varying importance for individual catchments. Exploring this combined effect is particularly important in humid regions where annual precipitation is approximately equally distributed over the year, while most studies were performed in climates with more seasonal precipitation and/or smaller precipitation amounts overall (such as in the western USA). Furthermore, we set the sensitivities of low flows to varying snow conditions in context to simple catchment properties which offers a way to indicate regions that might become more vulnerable to droughts in the future.

2 Material and methods

2.1 Study area

We selected 14 alpine and pre-alpine catchments in Switzerland with a catchment area ranging from 0.93 to 1577 km² (Fig. 1 and Table 1). Catchments as close as possible to natural conditions were selected, i.e. streamflow is near-natural and no major human influences such as dams or water transfer are present. Further, in the studied catchments there is zero or only a very small area covered by glaciers (0-2%, except up to 4% for Vorderrhein and Simme).

2.2 Data

Daily gridded precipitation and air temperature data (2 by 2 km² resolution) were obtained from the Swiss Federal Office of Meteorology and Climatology (MeteoSwiss; Frei and Schär, 1998; Frei, 2014) and averaged over the catchment area for use in the analyses. Daily snow water equivalent (SWE) data were also available as a gridded dataset with a 1 by 1 km² resolution. The SWE was calculated based on daily snow depth observations and a snow density model (Jonas et al., 2009) using interpolation and post-processing procedures first presented in Jörg-Hess et al. (2014). In a first step, available station data were mapped to a grid using de-trended

distance weighting procedures that were specifically adapted to interpolate SWE data. To further account for changes in the number of available snow stations, the gridded dataset was homogenized using the quantile mapping method. Quantile mapping is a statistical calibration method that allows a set of maps to be improved based on fewer stations, by accounting for persistent spatial patterns in maps that are based on a larger number of stations. This procedure resulted in a homogenized dataset that covers the period 1971-2012. This same data set has already been adopted to update initial conditions of a hydrological model used for ensemble monthly predictions of SWE and runoff (Jörg-Hess et al., 2015). Further details on the methodology used to process the SWE data are available in Jörg-Hess et al. (2014), which further assessed the accuracy of the homogenized maps. Additionally, Jörg-Hess et al. (2014) used this SWE data to assess the influence of snow conditions on summer low flows for a large Swiss catchment with possible use for minimum spring and summer runoff forecast based on SWE as the only predictor.

Daily discharge data were obtained from the Swiss Federal Office for the Environment (BAFU). Data from 1971 to 2012 were used in all analyses except a few shorter time series, as specified in Table 1.

2.3 Statistical analysis and assessment

We selected different predictors related to winter and spring meteorological conditions and water storage conditions in the catchments (Table 2).

These predictors were tested to explain the variability of three variables describing low flow conditions: i) minimum 7-day moving average of daily discharge was calculated based on BAFU data. Different sizes of the moving window (3, 7 and 15 days) were tested without significant influence on the results. ii) The day of year of 7-day minimum of discharge was calculated from June to September to exclude low flows before snowmelt or after the onset of new winter snow accumulation. iii) Number of days below a specified discharge threshold (25% quantile of discharge from May to October).

We used nine variables as predictors of future summer low flows (Table 2). The advantage of this choice of predictors is that only SWE, precipitation, air temperature and runoff data are needed for their calculation. These data are available for many regions which allows to test our methods also elsewhere with possible transfer to ungauged catchments.

Late winter conditions were represented by the maximum SWE before snowmelt onset calculated using the SWE data from February to May. We used both the maximum SWE calculated as a catchment mean and the maximum SWE calculated from the highest 50% of the catchment area, assuming that snowpack at higher elevations melts later and could be more important for summer discharges. The melt-out date was calculated from SWE data for each catchment and year. The melt-out date was defined as the first occurrence of snow free conditions (snow cover fraction less than 10%) after the day of maximum SWE. The sum of positive SWE changes (sum of new snow) and the sum of positive air temperatures were used as well. Both variables were calculated as a sum from November 1 to April 30.

While the variables related to snow describe the state of the individual catchment before snowmelt, total winter precipitation calculated from November 1 to April 30 describes the available water amount from winter precipitation. Additionally, we calculated the fraction of snowfall to total winter precipitation (S/P). Since information on whether precipitation occurred as rain or snow was not available, we used a threshold air temperature (1.1°C) to determine the phase of precipitation. The threshold temperature near 1°C was used by several authors (Dai, 2008; Feiccabrino and Lundberg, 2008) who used data from stations where the information about phase of precipitation were available. Additionally, we tested different threshold temperatures, and found no sensitivity of our results on an exact value.

The day of year with maximum SWE was used to show the dependence of low flows on this variable. In this way, we could investigate if low flows occur later in the year and if low flows are higher with later occurrence of maximum SWE.

A current precipitation index C_{PI} (Smakhtin and Masse, 2000) was used to describe the influence of preceding liquid precipitation on low flows. C_{PI} was calculated for each month from June to September for the day when 7-day minimum discharge occurred (Eq. 1).

$$C_{PI(t)} = C_{PI(t-1)} K + P_t, \quad (1)$$

where $C_{PI(t)}$ [mm] is C_{PI} for day t , P [mm] is the catchment precipitation for day t and K [-] is the daily recession coefficient, which usually varies from 0.85 to 0.98 (Smakhtin and Masse, 2000). We used a K value of 0.93 in this study. The statistical model used in our study is not sensitive to the exact value of K .

All parameters were calculated assuming a complete data series and additionally considering only years with below-average spring and summer precipitation. By doing this the effect of

spring and summer liquid precipitation on low flows could be separated and thus the effect of snow could be highlighted.

To assess the relations between predictors and response variables we used the Spearman rank correlation coefficient and the bivariate linear regression. Most of the predictors and response variables were expressed as a percentage difference from the mean value, which enabled a comparison between individual catchments. The linear regression was computed from log-transformed variables. Prediction intervals of linear regression were used, which allowed the future observation of the response variable to be estimated. The R software was used for all calculations in this study (<http://www.r-project.org/>).

The slope of regression calculated using the nonparametric Theil-Sen method was used to evaluate our statistical models. The Theil-Sen slope is a median of slopes calculated for each pair of observations (Birsan et al., 2005; Pellicciotti et al., 2010). The higher the value, the steeper the slope of regression and thus the more sensitive is the dependent variable (e.g. minimum discharge) to the change of the independent variable (e.g. maximum SWE). The Theil-Sen linear regression model is suitable for non-normally distributed data with outliers.

Similar to the slope of regression, the elasticity index (Eq. 2) was used to describe how sensitive the minimum discharge is to the change of SWE. The climate elasticity is often used to describe sensitivity of streamflow to the change of climate variables (Andréassian et al., 2015). A similar concept was used in this study to describe what percentage change of minimum discharge is caused by a defined percentage change of maximum SWE (Eq. 2).

$$\text{Elasticity} = \% \text{ change of minimum discharge} / \% \text{ change of maximum SWE} \quad (2)$$

While the relationship between maximum SWE and minimum discharge is usually not linear, the elasticity index changes for different SWE conditions. The elasticity index in this study is usually lower than 1, which means that a particular percentage change in maximum SWE causes a lower percentage change of minimum discharge. The elasticity index was calculated from the 50% probability of prediction derived from the individual linear models.

The relative influence of snow and liquid precipitation during the warm season on low flows was analyzed calculating scores for both SWE and C_{PI} (Eq. 3 and Eq. 4).

$$\text{SWEscore} = \sum_{i=1}^n (\text{SWE}_i \times Q_{\min_i} / 100) / n \quad (3)$$

$$C_{PI}\text{score} = \sum_{i=1}^n (C_{PI(i)} \times Q_{\min_i} / 100) / n \quad (4)$$

where SWE_i is maximum SWE in year i , Q_{min_i} is the 7-day minimum discharge in a specific month of year i and $C_{PI(i)}$ is the current precipitation index on the day when Q_{min_i} occurs. All input values are expressed as a percentage difference from the mean (e.g. a 100% SWE 100% represents the average maximum SWE in a catchment). The higher the score, the stronger the respective effect on low flows.

All analyses were done separately for each catchment and almost all for the period May to September to highlight the changing importance of snow contribution to low flows in different catchments and time. Analyses of the combined effect of snow and liquid precipitation were made only for the period from June to September, because liquid precipitation (expressed as C_{PI}) was not calculated for May. In May there is still snow in some catchments and including it in C_{PI} would complicate the interpretation of the results.

3 Results

3.1 Correlation of selected predictors and response variables

Spearman rank correlation coefficients between predictors and response variables were calculated separately for three elevation classes (highest elevation catchments: above 2000 m a.s.l.; middle elevation catchments: 1300-2000 m a.s.l.; low elevation catchments: 850-1300 m a.s.l) (Fig. 2). Using these three elevation classes showed changing correlations for catchments in different elevation and thus different influence of snow storage on runoff. Spearman rank correlation coefficients were displayed as heatmaps together with dendrograms showing clusters of similar predictors and response variables (Fig. 2).

The maximum SWE (both averaged per catchment and in upper 50% of the catchment area) was in most cases the best predictor for higher elevation catchments during summer (July and later). Additionally, maximum SWE and the sum of new SWE were better predictors than winter precipitation in snow dominated catchments to predict the number of days with low discharge (No. days $< Q_{25\%}$). On the contrary, winter precipitation was a better predictor than maximum SWE for lower elevation catchments (June to September) and for middle elevation catchments during spring (May, June). Furthermore, the melt-out date explained a relatively high portion of the inter-annual variability during spring time for the lower elevation catchments (~60%).

Minimum discharge and S/P were surprisingly weak but significantly correlated (0.05 level) from June to July (Fig. 2). Less prediction ability in both higher and lower elevations could be explained by a general reduced importance of snow in lower elevation catchments and high snowfall fraction (> 80%) in higher elevation catchments with a consequent smaller variability of snowfall fraction in higher than in lower elevation catchments.

The role of spring and summer liquid precipitation (expressed as C_{PI}) changed both for elevation classes and in different months showing a decreasing importance of preceding precipitation in the warm period from lower elevations to higher elevations and an increasing importance from June to September (Fig. 2). The correlation between predictors and the day of year with minimum discharge changed for three elevation classes showing decreasing correlations with SWE-related predictors and increasing correlations with preceding liquid precipitation (C_{PI}) from higher to lower elevations.

Despite the significance of the correlations, their values are not high which indicates that low flows are influenced by more than a single variable (maximum explained inter-annual variability in the group was 60%). Additionally, some of the predictors are not mutually independent (see dendrograms in Fig. 2). Since our focus was primarily on middle and high elevation catchments as well as on summer months, maximum SWE seems to be the best predictor, although differences are not large.

3.2 Influence of maximum SWE on low flows

Snow melt affects groundwater recharge and thus it has an effect on low flow values even after the melt-out of the snowpack. We used maximum SWE as variable to predict 7-day minimum discharge (Fig. 3). Snow influence decreased with monthly progression as shown for selected catchments representing high, middle and low elevation ranges. For the three elevation ranges maximum SWE differed not only in the overall amount but also in its annual variability (Fig. 3).

The relationships between the 7-day minimum discharge and maximum SWE (Fig. 3) are characterized by a large variability. This indicates that only a certain portion of low flow variability can be explained using maximum SWE. Coefficients of determination (R^2) were not higher than 0.65 for high elevation catchments during late spring and early summer. In general, the ability of maximum SWE to explain minimum discharges decreased from June to September and from higher to lower elevations.

1 The relationship between predictor and response variable were in more detail described by the
2 Theil-Sen slope of the regression and by the elasticity index (Fig. 4, Fig. 5 and Fig. 6). Both
3 Theil-Sen Slope and elasticity describe the sensitivity of low flows to both decrease and
4 increase of maximum SWE.

5 The elasticity index for high (mean elevation higher than 2000 m a.s.l.), middle (mean elevation
6 between 1300 and 2000 m a.s.l) and low (mean elevation between 850 and 1300 m a.s.l.)
7 elevation catchments (Fig. 4) decreased progressing from June to September. The elasticity
8 index for high elevation catchments was for each month higher than the elasticity index for
9 middle and low elevation catchments and the elasticity index of the middle elevation
10 catchments was higher than for the low elevation catchments. While the spread of the elasticity
11 indices per elevation class was about equal for high and middle elevation catchments the spread
12 for the low elevation increased progressing from month to month. This means the general
13 sensitivity to SWE is lower for lower and middle elevation catchments than for high elevation
14 catchments and decreases for each class progressing from June to September.

15 Theil-Sen slopes for each catchment and for every week from the beginning of May to the end
16 of September, allowed an analysis of the sensitivity in terms of the memory effect of each
17 catchment (Fig. 5). These weekly slopes describe how long water from snow melt contributes
18 to runoff formation and thus how long snowmelt affects low flows. With this approach, a
19 significant effect of snow on low flows became visible during the whole summer and until
20 September for catchments higher than 2000 m a.s.l. (Fig. 5). Snow affected low flows until July
21 in catchments with mean catchment elevation in the range of 1500 to 2000 m a.s.l. However,
22 snow did not affect summer low flow (July to September) in catchments lower than 1500 m
23 a.s.l. Here, snow affected low flows during May and June only, which is probably caused mostly
24 by lower SWE (maximum less than 250 mm).

25 There was a clearly longer snowmelt contribution to minimum discharges in higher elevation
26 catchments even when different melt-out dates (black points in the Fig. 5) were considered.
27 This could be related to more available water released from snow in higher elevation catchments
28 despite their steeper slopes and shallow soils. The negative correlations in some of the lower
29 elevation catchments (usually not statistically significant) indicates a mixed effect of snow and
30 liquid precipitation in the warm season.

31 Additionally, Theil-Sen slopes for each catchment and for every week from the beginning of
32 May to the end of September were calculated and set in context to the melt-out days only for

1 situations with dry preceding conditions, i.e. when liquid precipitation prior to minimum
2 discharge in a specific week was below average (results not shown in the paper). Considering
3 only these situations, the sensitivity of minimum discharges to maximum SWE increased. This
4 was due to the reduced influence of liquid precipitation in the warm season. As a consequence,
5 snow became more important for groundwater recharge and thus any decrease/increase of snow
6 storage in individual year resulted in a more sensitive response of minimum discharge.

7 The sensitivity as described by Theil-Sen slopes of individual catchments strongly depends on
8 catchment properties, such as mean catchment elevation, maximum SWE and S/P (Table 3).
9 The significant positive correlations (Table 3) imply that the sensitivity of minimum discharge
10 to maximum SWE increases with increasing value of the catchment property. Summer
11 minimum discharges in higher elevation catchments with steep slopes, high drainage density
12 and high maximum SWE were more sensitive to maximum SWE changes than minimum
13 discharges in lower and less steep catchments with lower drainage density and low maximum
14 SWE (Table 3). These correlations clearly varied for different months and reached their
15 maximum in July and August and they decreased in September. Maximum SWE affects
16 groundwater recharge and influences mainly the volume of water in the groundwater zone.
17 Elevation influences mainly the timing of snowmelt with later snowmelt onset in higher
18 elevations. Thus, the water inflow into the groundwater zone occurs later in spring and it is
19 distributed over a longer time period. Which is why groundwater recharge from snow affects
20 low flows even in late summer. Maximum SWE shows significant correlations in June through
21 September, while winter precipitation was not significantly correlated to the Theil-Sen slopes
22 (Table 3). Additionally, Spearman rank correlations were not significant with regard to
23 catchment area.

24 The elasticity calculated for the 50% probability of prediction enables us to describe the impact
25 of future changes of snowpack either due to natural annual variability or due to predicted
26 climate change (Fig. 6). For catchments higher than 2000 m a.s.l., every decrease of the
27 maximum SWE by 10% will cause a decrease of minimum discharge in July by 6% to 9%
28 (Fig. 6, top right). This means that the decrease of minimum discharge is almost proportional
29 to the decrease of SWE in some cases (Ova Da Cluozza and Ova dal Fuorn). For catchments
30 with a mean elevation between 1500 and 2000 m a.s.l, the decrease of minimum discharge
31 ranges from 2% (Grande Eau) to 5% (Simme). The lowest catchments are characterized with
32 even lower values indicating that any decrease of maximum SWE will not significantly affect

low flows at least from July to September. However, there is some small effect during June (Fig. 6, top left). Generally, the sensitivity of low flows to the change of SWE increases with elevation and decreases from June to September. However, the elasticity is not linear and the decrease of low flows accelerates with decreasing SWE.

Maximum SWE for each catchment impacted the day of year with minimum discharge (Fig. 7). Our hypothesis was that minimum summer discharge would occur later in the year for higher maximum SWE. However, later low flow occurrence may be additionally influenced by a later melt-out and thus later maximum of groundwater storage. Low flows occurred in September and October for higher elevation catchments with a higher SWE maximum (Fig. 7, brown points). In contrast, July and August are typical months for low flow occurrences for lower elevation catchments with lower SWE maximum (Fig. 7, green points). On average, every decrease in maximum SWE by 100 mm resulted in discharge minima occurring about 12 days earlier. However, inter-annual variability markedly increases in lower elevation catchments indicating an increasing role of summer precipitation.

3.3 Combined effect of snow conditions and preceding precipitation on summer low flows

Snow is an important component for groundwater recharge during the snowmelt period. However, the relation between snow and minimum discharge during the summer period is not often clear and may be overlaid by several other factors, mostly precipitation after melt-out. To demonstrate the combined effect of snow and precipitation on summer low flows, three snow-dominated catchments in high and middle elevations (Ova da Cluozza, Vorderrhein and Lümpechenbach) were selected as typical representatives and then further analyzed.

For low C_{PI} years, snow became a better predictor to explain the variability of minimum discharge indicated by steeper regression slopes and higher coefficients of Spearman rank correlation (Fig. 8, top). Minimum discharges did not decrease much with a low SWE and high C_{PI} (top plots, dashed lines). However, snow was more important for low C_{PI} years, where minimum discharges were more sensitive to the change of summer precipitation (top plots, solid lines).

The minimum discharge decreased significantly in years with lower than average maximum SWE and average preceding precipitation compared to years with higher than average SWE maximum and same amount of preceding precipitation (Fig. 8, bottom). For the Ova da Cluozza

catchment, as an example, and considering only years with above-average SWE maximum, there is a 50% probability that given an average preceding precipitation there will be a 7-day minimum discharge equal or higher than 107% of its normal in July. On the contrary, considering years with below-average SWE maximum, the 7-day minimum discharge will decrease to 75% of its normal level. Similar changes are predicted both for higher elevation catchments and lower elevation catchments, although in the latter this decrease is somewhat smaller.

The combined effect of snow and liquid precipitation on low flows was analyzed using “score plots”. In these plots the position of each catchment is shown according to its average influence of snow and precipitation on the 7-day minimum discharge separately for the period from June to September (Fig. 9). Points located below the $y=x$ line indicate catchments where snow has a stronger effect on low flows compared to rain. Catchments with a mean elevation higher than 1600 m a.s.l in June and July and higher than 2000 m a.s.l in August are typical representatives for a stronger effect of snow (Fig. 9, brown points). Points located above the line indicate catchments with a stronger effect of rain on low flows (lower elevation catchments in June, July and August and all catchments in September). Progressing from June to September the relative effect on low flows shifted from the highest elevation catchments showing a stronger effect of snow and a weaker effect of liquid precipitation which is reversed by September.

4 Discussion

4.1 The role of catchment properties

Based on our results it seems that dependencies between predictors and response variables may be connected to catchment properties and climate drivers to some degree, such as elevation and thus maximum SWE and S/P. However, the variability of low flows cannot be explained by one single parameter, which are indicated by relatively low values of Spearman rank correlation.

The correlation of the dependencies of summer low flows on catchment elevation can be explained by lower air temperature in higher elevation and thus more snow accumulation and may be supported by results of Birsan et al. (2005) and Staudinger et al. (2015) in Swiss catchments. Staudinger et al. (2015) showed that higher elevation and steeper catchments were

1 less sensitive to droughts mainly because of an increasing snow influence but also because of
2 potentially larger storages for the higher elevation catchments of the selection. Our results
3 showed that this sensitivity might increase with decreasing SWE either due to natural annual
4 variability or due to climate change.

5 The elevation was also related to the memory effect of individual catchments which was
6 generally longer for the highest elevation catchments than for middle or low elevation
7 catchments. However, even with the highest elevation catchments, we did not find any
8 significant correlations of snow and minimum discharges in October and later. In contrast,
9 Godsey et al. (2014) found significant correlations even with the previous year's snowpack for
10 some catchments in the western USA.

11 A longer memory effect in catchments with higher elevation is not only connected to higher
12 snowpack accumulations but also to the simple fact that snowmelt occurs later in spring and
13 persists longer compared to catchments in lower elevations (often until late spring or even early
14 summer). The dependence of the day of year of peak SWE on day of year of minimum discharge
15 was confirmed in our study. Similar dependences were found also in Whitaker et al. (2008),
16 using the timing of the first significant snowmelt event instead of the day of year of peak SWE.
17 A negative trend in the number of days with discharge below specified threshold in case of
18 increasing peak SWE was proved. A 25% quantile of discharge from May to October was used
19 in this study. A 10% quantile was also tested and found to have only minor impact on the results.

20 As documented by Beaulieu et al. (2012) in British Columbia, snow from headwater parts of
21 catchments contributes significantly to base flow in lower parts of the catchments during
22 summer. Earlier snowmelt onset and thus decrease of minimum streamflow has been observed
23 (Jefferson, 2011) and a further shift of snowmelt towards earlier spring is predicted (Cayan et
24 al., 2001; Barnett et al., 2005; Stewart et al., 2005; Bavay et al., 2009; Godsey et al., 2014).

25 Of course there are many other factors together with snow in winter that influence and can
26 explain low flow conditions in summer. For instance, evapotranspiration may change from year
27 to year. In this study we did not do a thorough analysis of potential and actual evapotranspiration
28 because of a lack of available data. However, water balance component estimates for the entire
29 Switzerland during the last 100 years show that annual precipitation and runoff vary far more
30 than evaporation (Hubacher and Schädler, 2010). Given that, we expect that variations of ET
31 from year to year are relatively minor compared to changes in SWE and if there are any, than
32 we would expect more actual evapotranspiration in wet years and less in dry ones. This

feedback leads to the hypothesis that actual evapotranspiration is less useful as predictor for low flows. We tested also drainage density to account for landscape draining properties (e.g. Tague and Grant, 2004) and found significant correlation of low flow sensitivity to the change of maximum SWE (Table 3). Draining properties together with catchment storage properties may help understanding the process causality leading to summer low flow. Combining this kind of catchment properties with the snow information might be useful for prediction. However, in this study we explored and quantified the general dependency and sensitivity to winter snowpack in humid regions.

However, the results presented in this study do not explain the process causality in detail. It means we quantified the relations based on data we used, but process-based understanding at the catchment scale is limited and has to be further investigated.

4.2 Influence of changing snow conditions

The influence of snow conditions on summer low flow will likely decrease due to predicted air temperature increase during winter and thus the decrease of S/P ratio and SWE in middle elevations. The snow fraction has an important effect on not only annual discharge (Berghuijs et al., 2014; Speich et al., 2015; Zhang et al., 2015) but also on summer low flows as documented by Godsey et al. (2014) in the western US and Laghari et al. (2012) in Austria. Our results are similar for high and mid elevation catchments in Switzerland, and based on these studies, we may conclude that summer low flows are significantly sensitive to any SWE changes. Although our study did not focus on existing trends in data, we expect a reducing effect of snow on late summer low flows in the highest elevation catchments. This reduction might increase problems with water availability in affected regions.

We did not explore possible impact of climate change on SWE and minimum discharges, such as relations between possible warming in the cold season and minimum discharges in the warm season or explore if any SWE decrease will occur related to it. However if there was a SWE decrease, then the same percentage decrease of SWE in higher elevation catchments will result in a stronger percentage decrease of minimum discharges than the same percentage decrease of SWE in lower elevation catchments (see Fig. 6 showing the elasticity).

In this study we looked at catchment mean elevations and for some analyses we also classified catchments as high, mid or low elevation catchments. In practice this might be oversimplified as there is generally a large gradient of precipitation and S/P ratios across elevation. Hence,

also depending on the percentage of a catchment that is well below 0°C for most of the winter even with warming conditions the effect of SWE changes will be more or less strong. Nevertheless, we argue that the quantification method introduced in this study could be applied also for a more discretized set up with regard to relevant elevation zones.

4.3 Combined effect of snow and precipitation

The correlation between minimum discharge and maximum SWE considering years with little rain was higher than in years with a lot of rain. Low flows are usually higher during years with above-average snow conditions. Even in the case of low antecedent precipitation, low flow was higher than in years with below-average snow conditions. Therefore, snow plays an important role, although below-average snow conditions do not necessarily indicate below-average low flows. Preceding precipitation seems to be more important in this case. Because of the combined effect of snow and summer precipitation on summer low flows, snow-related parameters cannot fully explain the annual variability of low flows in humid regions as documented by Godsey et al. (2014) for strongly seasonal regions even for the highest elevation catchments. Nevertheless, most of detected trends in our study were significant at less than the 0.05 level, showing the significant influence of snow on summer low flows.

The decrease of maximum SWE and snowfall fraction increased the relative importance of rain during summer and rain thus became a relatively more important source for groundwater recharge. Our results showed that the continuous decrease of maximum SWE and snowfall fraction in the future might increase the sensitivity of catchments in mid and high elevations to hydrological droughts. This conclusion is in accordance with results of Birsan et al. (2005).

We chose the period from May to September to show the changing importance of snow contribution to low flows in different catchments, both in lower and higher elevations. We also tested the effect of maximum SWE on summer minimum discharge (June-August, not shown in this paper). The results for most of catchments are very similar to existing relations calculated for August because most of summer minimum discharges occur in August. Clearly we see the lowest summer flow as a compelling response variable, given the water management interest and possible issues connected to it. However, for the development of the role of snow compared to liquid precipitation this one response variable is not sufficient.

Our results do not provide a general answer to the question whether snow storage is more important than precipitation. Due to moderate humid climate in Switzerland with precipitation

almost equally distributed in a year (opposite to western US), the aim was to show the combined effect of snow and liquid precipitation and their changing role in time (in different months) and in catchments with different elevation. Summer precipitation in Switzerland is relatively higher than summer precipitation in the western USA and, as shown in our study, summer precipitation dominates over the effect of snow, especially with an increasing time from the snowmelt period and with decreasing elevation. This combined effect explains the contrary results for the western USA and Switzerland.

4.4 Practical use of a quantification of snow influence on summer low flows

We used winter precipitation as a predictor and we expected similar results as using maximum SWE as predictor. Winter precipitation (from November to April) is highly correlated with SWE and we expect increasing mutual correlation for higher elevation catchments with higher S/P. Despite higher correlations in some cases (Fig. 2), we consider winter precipitation to be less suitable as a predictor than maximum SWE. Maximum SWE showed significant correlations with the Theil-Sen slopes in June through September, while winter precipitation was not significantly correlated to any of these sensitivity parameters (Table 3). Additionally, winter precipitation is not corrected for undercatch of snowfall. Thus, we expect larger errors varying between stations according to site conditions and wind speed. Given these facts and given that maximum SWE showed better prediction ability compared to winter precipitation for higher elevation catchments maximum SWE seems to be suitable predictor for forecast models. Hence, we believe that SWE data offers a chance to improve hydrological prediction models.

Our results quantified the effect of snow on minimum discharges when liquid precipitation is below average (or opposite, when SWE is below average) as documented in Fig. 8. This could increase the reliability of predictions of minimum discharge during summer. Additionally, we provided information about sensitivity of low flow in individual catchments to changes in maximum SWE using prediction intervals showing the 50% probability as well as prediction bands enabling the prediction of future observation. With this approach, it was possible to quantify not only the effect of snow storage on minimum discharge, but also on other low flow parameters, such as length of the period with minimum discharge, day of year of minimum discharge occurrence and number of days below a specified runoff threshold.

We used new SWE data covering the entire Switzerland. From our study we see a big potential to use this data for instance to regionalize the catchment sensitivity and the length of snowmelt contribution to runoff in poorly gauged areas.

5 Conclusions

In this study we described and quantified the influence of winter and spring snow conditions on summer low flows. Specifically, we investigated the memory effect related to snow influence in runoff and the sensitivity of the catchments to low flow reduction due to any change of snowpack. The main conclusions are the following:

- Snowmelt significantly affected minimum discharge in May to September (with decreasing importance) for catchments higher than 2000 m a.s.l., up to, in July and August in mid-elevation catchments and only in June and July in the lowest elevation catchments. The sensitivity of low flows to maximum annual SWE was higher for catchments at higher elevation.
- Low flows occurred later in the year for years with above average snow accumulations. Considering the mean day of minimum discharge occurrence in all study catchments, a decrease of maximum snow accumulations by 100 mm resulted in earlier runoff minima by 12 days.
- Maximum SWE showed the best prediction ability from all winter-related predictors used in this study especially for higher elevation catchments. Applicable results were achieved also with winter precipitation (November-April). However, winter precipitation is not suitable to describe the catchment sensitivity and they are not corrected for undercatch. Thus, using maximum SWE is recommendable for sensitivity studies.
- Snow and summer precipitation had a combined effect on summer low flows, and snow accumulation alone cannot explain the annual variability of low flows even in high-elevation catchments. Snow was a better predictor for the variability of low flows when only years with lower than average preceding precipitation were considered. However, even if both snow and liquid precipitation are considered, there is still some portion of annual variability which cannot be explained by these two predictors.

- Summer low flows are significantly sensitive to any SWE changes. Thus, a reducing effect of snow on late summer low flows in highest elevation catchments is expected due to predicted climate changes. As a consequence the sensitivity of catchments in mid and high elevations to meteorological droughts might increase.

Author contribution

M. Zappa and J. Seibert initiated the project. M. Jenicek developed the methodology (with contributions of Jan Seibert) and performed all analyses. M. Zappa, M. Staudinger and T. Jonas prepared input meteorological data used for analyses. M. Jenicek prepared the manuscript with substantial contributions from all co-authors.

Acknowledgements

Support from the Swiss National Research Program Sustainable Water Management (NRP 61, project DROUGHT-CH) and the Czech Science Foundation (GACR 13-32133S, project Headwaters) are gratefully acknowledged. The authors also thank SCIEX - Scientific Exchange Programme NMS.CH for the support of the first author during his postdoc stay at the University of Zurich. The contribution of M. Zappa was supported by the Swiss National Science Foundation SNF through the Joint Research Projects (SCOPES) Action (Grant IZ73Z0_152506). Many thanks to Tracy Ewen for improving the English of the manuscript.

References

- Andréassian, V., Coron, L., Lerat, J. and Le Moine, N.: Climate elasticity of streamflow revisited – an elasticity index based on long-term hydrometeorological records, *Hydrol. Earth Syst. Sci. Discuss.*, 12(4), 3645–3679, doi:10.5194/hessd-12-3645-2015, 2015.
- Barnett, T. P., Adam, J. C. and Lettenmaier, D. P.: Potential impacts of a warming climate on water availability in snow-dominated regions., *Nature*, 438(7066), 303–309, doi:10.1038/nature04141, 2005.
- Bavay, M., Lehning, M., Jonas, T. and Löwe, H.: Simulations of future snow cover and discharge in Alpine headwater catchments, *Hydrol. Process.*, 23(1), 95–108, doi:10.1002/hyp.7195, 2009.

1 Beaulieu, M., Schreier, H. and Jost, G.: A shifting hydrological regime: a field investigation of
2 snowmelt runoff processes and their connection to summer base flow, Sunshine Coast, British
3 Columbia, *Hydrol. Process.*, 26(17), 2672–2682, doi:10.1002/hyp.9404, 2012.

4 Berghuijs, W. R., Woods, R. A. and Hrachowitz, M.: A precipitation shift from snow towards
5 rain leads to a decrease in streamflow, *Nat. Clim. Chang.*, 4, 583–586,
6 doi:10.1038/NCLIMATE2246, 2014.

7 Birsan, M. V., Molnar, P., Burlando, P. and Pfaundler, M.: Streamflow trends in Switzerland,
8 *J. Hydrol.*, 314, 312–329, doi:10.1016/j.jhydrol.2005.06.008, 2005.

9 Blahusiakova, A. and Matouskova, M.: Rainfall and runoff regime trends in mountain
10 catchments (Case study area: the upper Hron River basin, Slovakia), *J. Hydrol.*
11 *Hydromechanics*, 63, doi:10.1515/johh-2015-0030, 2015.

12 Cayan, D. R., Riddle, L. G. and Aguado, E.: The influence of precipitation and temperature on
13 seasonal streamflow in California, *Water Resour. Res.*, 29, 1127–1140,
14 doi:10.1029/92WR02802, 1993.

15 Cayan, D. R., Kammerdiener, S. A., Dettinger, M. D., Caprio, J. M. and Peterson, D. H.:
16 Changes in the Onset of Spring in the Western United States, *Bull. Am. Meteorol. Soc.*, 82(3),
17 399–415, doi:10.1175/1520-0477(2001)082<2265:CAACOC>2.3.CO;2, 2001.

18 Dankers, R. and Christensen, O. B.: Climate change impact on snow coverage, evaporation and
19 river discharge in the sub-arctic Tana Basin, Northern Fennoscandia, *Clim. Change*, 69, 367–
20 392, doi:10.1007/s10584-005-2533-y, 2005.

21 Dai, A.: Temperature and pressure dependence of the rain-snow phase transition over land and
22 ocean, *Geophys. Res. Lett.*, 35(12), L12802, doi:10.1029/2008GL033295, 2008.

23 Day, C. A.: Modelling impacts of climate change on snowmelt runoff generation and
24 streamflow across western US mountain basins: a review of techniques and applications for
25 water resource management, *Prog. Phys. Geogr.*, 33(5), 614–633,
26 doi:10.1177/0309133309343131, 2009.

27 Earman, S., Campbell, A. R., Phillips, F. M. and Newman, B. D.: Isotopic exchange between
28 snow and atmospheric water vapor: Estimation of the snowmelt component of groundwater
29 recharge in the southwestern United States, *J. Geophys. Res. Atmos.*, 111,
30 doi:10.1029/2005JD006470, 2006.

1 Feiccabrino, J. and Lundberg, A.: Precipitation Phase Discrimination in Sweden, in 65th
2 Eastern Snow Conference, 239–254., 2008.

3 Feng, S. and Hu, Q.: Changes in winter snowfall/precipitation ratio in the contiguous United
4 States, *J. Geophys. Res. Atmos.*, 112, doi:10.1029/2007JD008397, 2007.

5 Fiala, T., Ouarda, T. B. M. J. and Hladný, J.: Evolution of low flows in the Czech Republic, *J.*
6 *Hydrol.*, 393, 206–218, doi:10.1016/j.jhydrol.2010.08.018, 2010.

7 Frei, C.: Interpolation of temperature in a mountainous region using nonlinear profiles and non-
8 Euclidean distances, *Int. J. Climatol.*, 34(5), 1585–1605, doi:10.1002/joc.3786, 2014.

9 Frei, C. and Schär, C.: A precipitation climatology of the Alps from high-resolution rain-gauge
10 observations, *Int. J. Climatol.*, 18(8), 873–900, doi:10.1002/(SICI)1097-
11 0088(19980630)18:8<873::AID-JOC255>3.0.CO;2-9, 1998.

12 Godsey, S. E., Kirchner, J. W. and Tague, C. L.: Effects of changes in winter snowpacks on
13 summer low flows: case studies in the Sierra Nevada, California, USA, *Hydrol. Process.*,
14 28(19), 5048–5064, doi:10.1002/hyp.9943, 2014.

15 Hanel, M., Vizina, A., Máca, P. and Pavlásek, J.: A Multi-Model Assessment of Climate
16 Change Impact on Hydrological Regime in the Czech Republic, *J. Hydrol. Hydromechanics*,
17 60(3), 152–161, doi:10.2478/v10098-012-0013-4, 2012.

18 Hubacher R., Schädler B.: Wasserhaushalt grosser Einzugsgebiete im 20. Jahrhundert. Tafel
19 6.6. In: Weingartner R., Spreafico M. (Hrsg.): Hydrologischer Atlas der Schweiz (HADES).
20 Bundesamt für Umwelt, Bern, 2010.

21 Jefferson, A. J.: Seasonal versus transient snow and the elevation dependence of climate
22 sensitivity in maritime mountainous regions, *Geophys. Res. Lett.*, 38(16),
23 doi:10.1029/2011GL048346, 2011.

24 Jenicek, M., Beitlerova, H., Hasa, M., Kucerova, D., Pevna, H. and Podzimek, S.: Modeling
25 snow accumulation and snowmelt runoff - present approaches and results, *Acta Univ.*
26 *Carolinae, Geogr.*, 47(2), 15–24, 2012.

27 Jonas, T., Marty, C. and Magnusson, J.: Estimating the snow water equivalent from snow depth
28 measurements in the Swiss Alps, *J. Hydrol.*, 378, 161–167, doi:10.1016/j.jhydrol.2009.09.021,
29 2009.

1 Jörg-Hess, S., Fundel, F., Jonas, T. and Zappa, M.: Homogenisation of a gridded snow water
2 equivalent climatology for Alpine terrain: methodology and applications, *Cryosph.*, 8(2), 471–
3 485, doi:10.5194/tc-8-471-2014, 2014.

4 Jörg-Hess, S., Griessinger, N. and Zappa, M.: Probabilistic Forecasts of Snow Water Equivalent
5 and Runoff in Mountainous Areas, *J. Hydrometeorol.*, 16, 2169–2186,
6 doi:http://dx.doi.org/10.1175/JHM-D-14-0193.1, 2015.

7 Jost, G., Weiler, M., Gluns, D. R. and Alila, Y.: The influence of forest and topography on snow
8 accumulation and melt at the watershed-scale, *J. Hydrol.*, 347(1-2), 101–115,
9 doi:10.1016/j.jhydrol.2007.09.006, 2007.

10 Kliment, Z., Matouskova, M., Ledvinka, O. and Kralovec, V.: Trend Analysis of Rainfall-
11 Runoff Regimes in Selected Headwater Areas of the Czech Republic, *J. Hydrol.*
12 *Hydromechanics*, 59, 36–50, doi:DOI 10.2478/v10098-011-0003-y, 2011.

13 Knowles, N., Dettinger, M. D. and Cayan, D. R.: Trends in snowfall versus rainfall in
14 the Western United States, *J. Clim.*, 19, 4545–4559, 2006.

15 Kucerova, D. and Jenicek, M.: Comparison of selected methods used for the calculation of the
16 snowpack spatial distribution, Bystřice River basin, Czechia, *Geografie*, 119(3), 199–217,
17 2014.

18 Laghari, A. N., Vanham, D. and Rauch, W.: To what extent does climate change result in a shift
19 in Alpine hydrology? A case study in the Austrian Alps, *Hydrol. Sci. J.*, 57(1), 103–117,
20 doi:10.1080/02626667.2011.637040, 2012.

21 Langhammer, J., Su, Y. and Bernsteinová, J.: Runoff Response to Climate Warming and Forest
22 Disturbance in a Mid-Mountain Basin, *Water*, 7(7), 3320–3342, doi:10.3390/w7073320, 2015.

23 Van Loon, A. F. and Laaha, G.: Hydrological drought severity explained by climate and
24 catchment characteristics, *J. Hydrol.*, 526, 3–14, doi:10.1016/j.jhydrol.2014.10.059, 2015.

25 Van Loon, A. F., Ploum, S. W., Parajka, J., Fleig, A. K., Garnier, E., Laaha, G. and Van Lanen,
26 H. A. J.: Hydrological drought types in cold climates: quantitative analysis of causing factors
27 and qualitative survey of impacts, *Hydrol. Earth Syst. Sci.*, 19(4), 1993–2016,
28 doi:10.5194/hess-19-1993-2015, 2015.

1 Lundquist, J. D. and Flint, A. L.: Onset of Snowmelt and Streamflow in 2004 in the Western
2 United States: How Shading May Affect Spring Streamflow Timing in a Warmer World, J.
3 Hydrometeorol., 7, 1199–1217, doi:10.1175/JHM539.1, 2006.

4 Pellicciotti, F., Bauder, A. and Parola, M.: Effect of glaciers on streamflow trends in the Swiss
5 Alps, Water Resour. Res., 46, doi:10.1029/2009WR009039, 2010.

6 Pomeroy, J., Fang, X. and Ellis, C.: Sensitivity of snowmelt hydrology in Marmot Creek,
7 Alberta, to forest cover disturbance, Hydrol. Process., 26(12), 1891–1904,
8 doi:10.1002/hyp.9248, 2012.

9 Serquet, G., Marty, C., Dulex, J.-P. and Rebetez, M.: Seasonal trends and temperature
10 dependence of the snowfall/precipitation-day ratio in Switzerland, Geophys. Res. Lett., 38(7),
11 doi:10.1029/2011GL046976, 2011.

12 Smakhtin, V. and Masse, B.: Continuous daily hydrograph simulation using duration curves of
13 a precipitation index, Hydrol. Process., 14(6), 1083–1100, doi:10.1002/(SICI)1099-
14 1085(20000430)14:63.0.CO;2-2, 2000.

15 Speich, M. J. R., Bernhard, L., Teuling, A. J. and Zappa, M.: Application of bivariate mapping
16 for hydrological classification and analysis of temporal change and scale effects in Switzerland,
17 J. Hydrol., 523, 804–821, doi:10.1016/j.jhydrol.2015.01.086, 2015.

18 Staudinger, M. and Seibert, J.: Predictability of low flow – An assessment with simulation
19 experiments, J. Hydrol., 519, 1383–1393, doi:10.1016/j.jhydrol.2014.08.061, 2014.

20 Staudinger, M., Weiler, M. and Seibert, J.: Quantifying sensitivity to droughts – an
21 experimental modeling approach, Hydrol. Earth Syst. Sci., 19(3), 1371–1384,
22 doi:10.5194/hess-19-1371-2015, 2015.

23 Stewart, I. T., Cayan, D. R. and Dettinger, M. D.: Changes toward earlier streamflow timing
24 across western North America, J. Clim., 18(8), 1136–1155, doi:10.1175/JCLI3321.1, 2005.

25 Tague, C., Grant, G. E.: A geological framework for interpreting the low-flow regimes of
26 Cascade streams, Willamette River Basin, Oregon. Water Resour. Res. 40, 1–9.
27 doi:10.1029/2003WR002629, 2004.

28 Whitaker, A. C., Sugiyama, H. and Hayakawa, K.: Effect of snow cover conditions on the
29 hydrologic regime: Case study in a pluvial-nival watershed, Japan, J. Am. Water Resour.
30 Assoc., 44(4), 814–828, doi:10.1111/j.1752-1688.2008.00206.x, 2008.

- 1 Zappa, M. and Kan, C.: Extreme heat and runoff extremes in the Swiss Alps, Nat. Hazards
2 Earth Syst. Sci., 7(3), 375–389, doi:10.5194/nhess-7-375-2007, 2007.
- 3 Zhang, D., Cong, Z., Ni, G., Yang, D. and Hu, S.: Effects of snow ratio on annual runoff within
4 the Budyko framework, Hydrol. Earth Syst. Sci., 19(4), 1977–1992, doi:10.5194/hess-19-1977-
5 2015, 2015.

1 Tables

2 Table 1. Study catchments and selected characteristics (S/P refers to the ratio of snowfall to
3 total precipitation).

| Catchment (gauging station) | Area (km ²) | Mean elevation (m a.s.l.) | Elevation range (m a.s.l.) | Mean slope (°) | Drainage density (km.km ⁻²) | Mean SWE _{ma} x (mm) | Mean melt-out | S/P [-] | Winter precipitation (mm) | Data from (to 2012) |
|-----------------------------------|----------------------------|---------------------------------|----------------------------------|----------------------|---|-------------------------------------|------------------|------------|---------------------------------|------------------------------|
| Dischmabach (Davos) | 42.9 | 2368 | 1667-3138 | 22.9 | 4.44 | 484 | 26 Jun | 0.97 | 365 | 1971 |
| Ova Da Cluozza (Zernez) | 27.0 | 2361 | 1507-3160 | 26.8 | 3.75 | 339 | 22 Jun | 0.98 | 349 | 1971 |
| Ova Dal Fuorn (Zernez) | 55.3 | 2328 | 1706-3156 | 18.9 | 3.59 | 339 | 15 Jun | 0.97 | 338 | 1971 |
| Hinterrhein (Fürstenu) | 1577 | 2113 | 649-3406 | 21.9 | 3.64 | 333 | 1 Jul | 0.91 | 403 | 1974 |
| Vorderrhein (Ilanz) | 774 | 2023 | 691-3605 | 23.0 | 3.69 | 391 | 27 Jul | 0.88 | 627 | 1971 |
| Riale di Calneggia (Caveragno) | 23.9 | 1986 | 883-2911 | 29.1 | 3.87 | 423 | 15 Jun | 0.88 | 790 | 1971 |
| Allenbach (Adelboden) | 28.8 | 1851 | 1296-2753 | 19.7 | 3.94 | 351 | 17 Jun | 0.78 | 720 | 1971 |
| Simme (Oberwil) | 344 | 1632 | 776-3242 | 18.1 | 3.54 | 530 | 16 Jul | 0.74 | 729 | 1971 |
| Grande Eau (Aigle) | 132 | 1557 | 417-3204 | 21.1 | 3.50 | 249 | 28 Jun | 0.71 | 789 | 1971 |
| Lümpenbach | 0.93 | 1318 | 1100-1515 | 15.1 | 3.11 | 207 | 10 May | 0.59 | 883 | 1974 |
| Emme (Eggiwil) | 124 | 1275 | 581-2220 | 14.2 | 3.44 | 185 | 17 May | 0.59 | 680 | 1975 |
| Sitter (Appenzell) | 74.4 | 1247 | 769-2501 | 17.8 | 3.56 | 193 | 25 May | 0.62 | 787 | 1971 |
| Sense (Thörishaus) | 351 | 1068 | 551-2181 | 9.9 | 3.14 | 94 | 8 May | 0.39 | 588 | 1971 |
| Gürbe (Belp) | 116 | 845 | 518-2169 | 8.7 | 3.52 | 51 | 28 Apr | 0.41 | 551 | 1971 |

4

1 Table 2. Predictor and response variables used in analyses.

| Predictor variables | Response variables |
|--|---|
| Maximum of SWE during winter before melting (catchment mean) | Minimum of 7-day moving average of discharge |
| Maximum of SWE during winter before melting (SWE mean calculated from higher situated 50% of catchment area) | Day of year (DOY) with 7-day minimum of discharge |
| Melt-out date (Snow-free date) | Number of days below specified runoff threshold (25% quantile of runoff from May to October used) |
| Sum of winter precipitation (November-April) | |
| Rate of snowfall vs. total winter precipitation (S/P) | |
| Sum of positive SWE changes from November to April | |
| Sum of positive air temperatures from November to April | |
| Current precipitation index C_{PI} (Smakhtin and Masse, 2000) | |
| Day of year (DOY) with maximum SWE | |

2

1 Table 3. Spearman rank correlation coefficients for the relation between catchment properties
2 and Theil-Sen slopes (TS), which were computed for assessing the low flow sensitivity to peak
3 SWE. Statistically significant correlations (at the 0.05 level) are shown in bold.

| Catchment property | TS May | TS Jun | TS Jul | TS Aug | TS Sep |
|----------------------|--------|-------------|-------------|-------------|-------------|
| Area | 0.18 | 0.02 | -0.12 | -0.17 | 0.16 |
| Elevation | -0.09 | 0.58 | 0.88 | 0.80 | 0.52 |
| Slope | 0.07 | 0.28 | 0.83 | 0.73 | 0.49 |
| Drainage density | -0.42 | 0.52 | 0.60 | 0.74 | 0.42 |
| Maximum SWE | 0.00 | 0.67 | 0.60 | 0.57 | 0.66 |
| S/P | -0.13 | 0.62 | 0.87 | 0.84 | 0.54 |
| Winter precipitation | 0.41 | -0.29 | -0.32 | -0.39 | -0.17 |

4

1 Figures

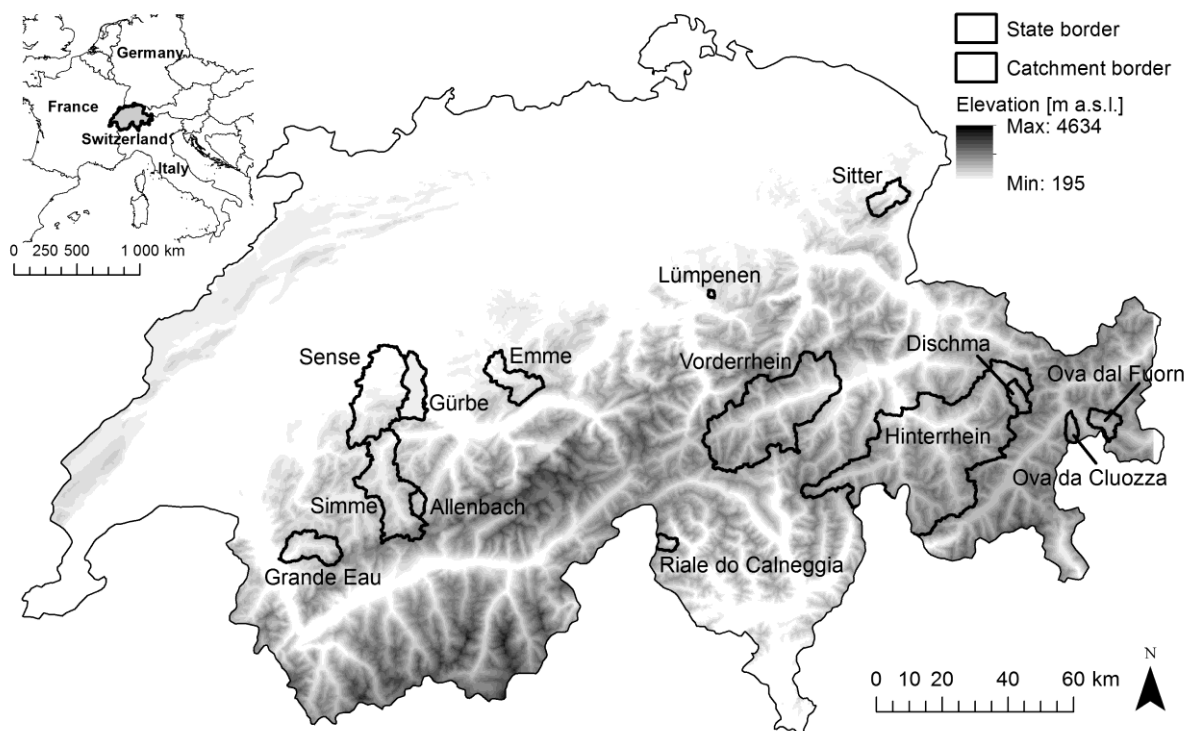


Figure 1. Location of the study catchments within Switzerland.

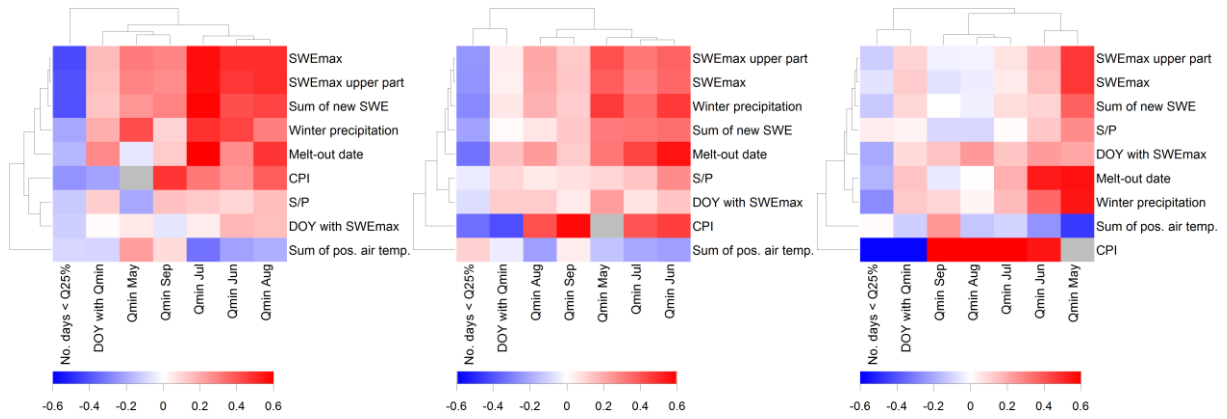


Figure 2. Heatmaps showing Spearman rank correlation coefficients for all predictors (rows) and response variables (columns) separately for three elevation groups. Left: catchments with mean elevation higher than 2000 m a.s.l.; Middle: catchments with mean elevation between 1300 and 2000 m a.s.l.; Right: catchments with mean elevation between 850 and 1300 m a.s.l. Euclidean distance used for clustering. Gray color used for NA values.

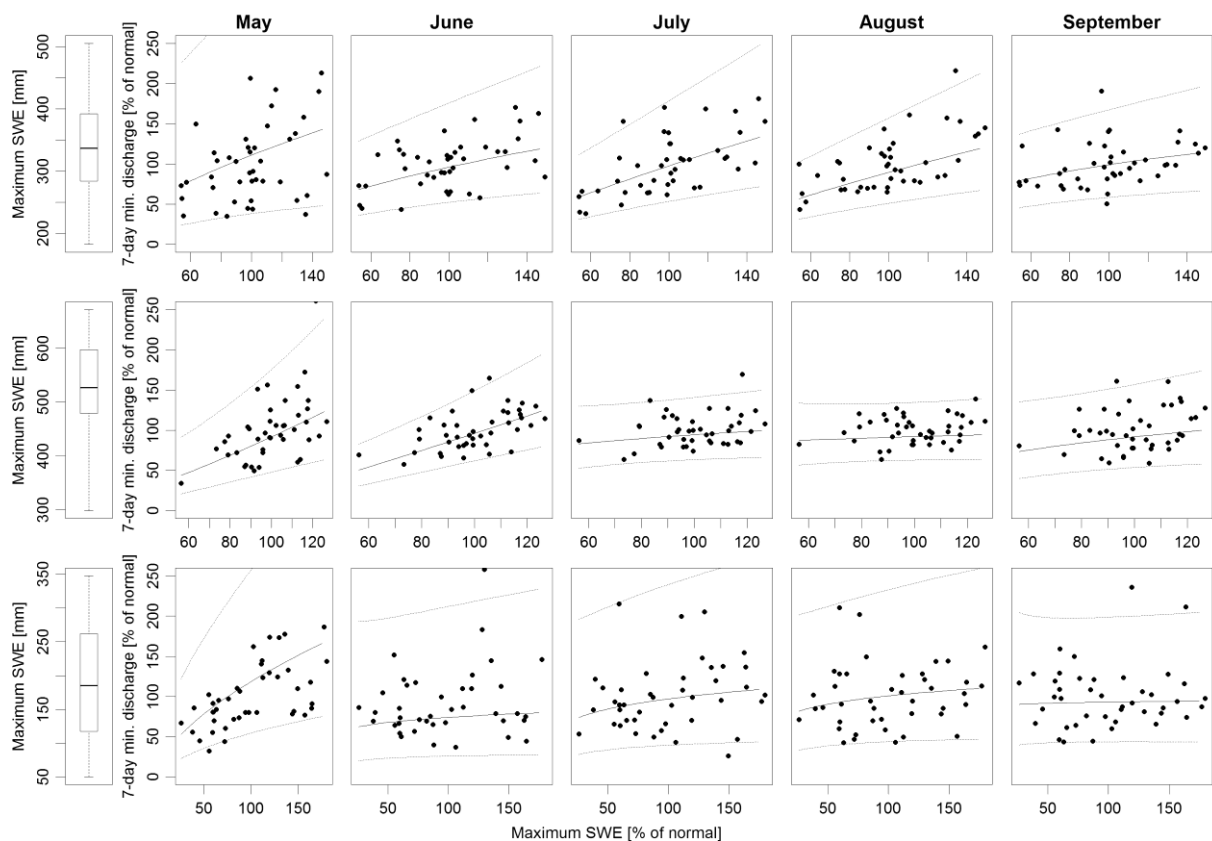


Figure 3. Dependence of 7-day minimum discharge on maximum SWE for individual months. Top: Ova da Cluozza River representing a high elevation catchment with a mean catchment elevation of 2361 m a.s.l., correlations from May to September are statistically significant (0.05 level). Middle: Simme River, representing a middle elevation catchment with a mean catchment elevation of 1632 m a.s.l., correlations from May to June are significant. Bottom: Sitter River as a representative of a low elevation catchment with a mean catchment elevation of 1247 m a.s.l., only the correlation in May is significant. Solid lines represent the low flow occurring with a 50% probability, dotted lines represent the 95% prediction interval.

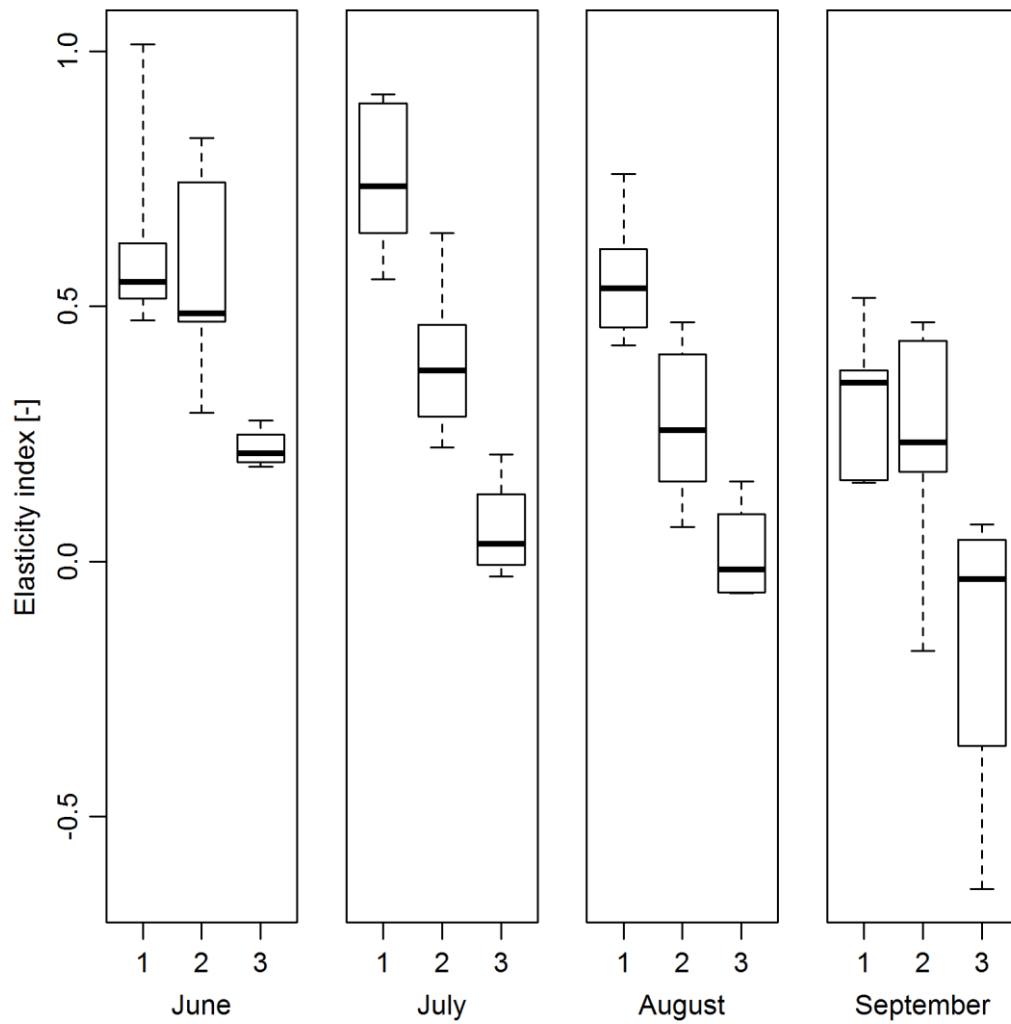


Figure 4. Elasticity index for all catchments classified according to elevation describing the sensitivity of 7-day minimum discharge on maximum SWE for individual months. Elevation classes on x-axis: 1 – catchments with mean elevation higher than 2000 m a.s.l.; 2 – catchments with mean elevation between 1300 and 2000 m a.s.l.; 3 - catchments with mean elevation between 850 and 1300 m a.s.l. The boxes represent the 25%, 50% and 75% quantiles and the whiskers represent minimum and maximum values.

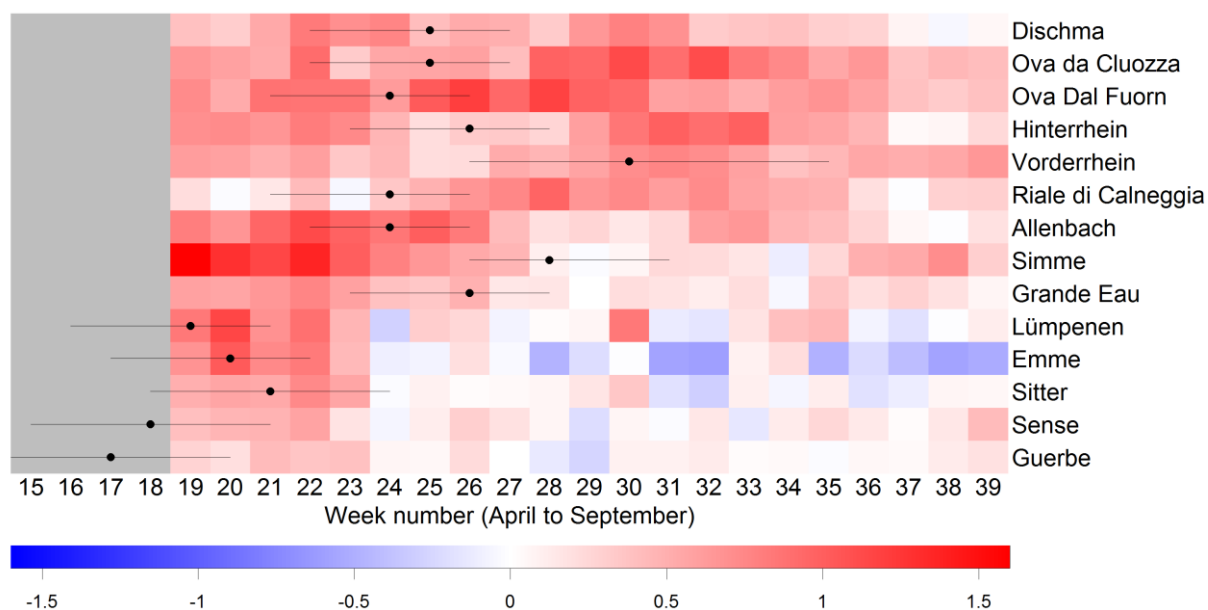


Figure 5. Dependence of 7-day minimum discharge on maximum SWE for all studied catchments (sorted by elevation from highest to lowest) for individual weeks from the beginning of May (week 19) to the end of September (week 39). April (weeks 15-18) was not included in calculation. Color key provides Theil-Sen slope values. Red indicates positive effect of SWE on minimum discharge (positive slopes), blue indicates negative effect of SWE on minimum discharge (negative slopes). Black points indicate average week of melt-out, whiskers represent 10% and 90% quantiles.

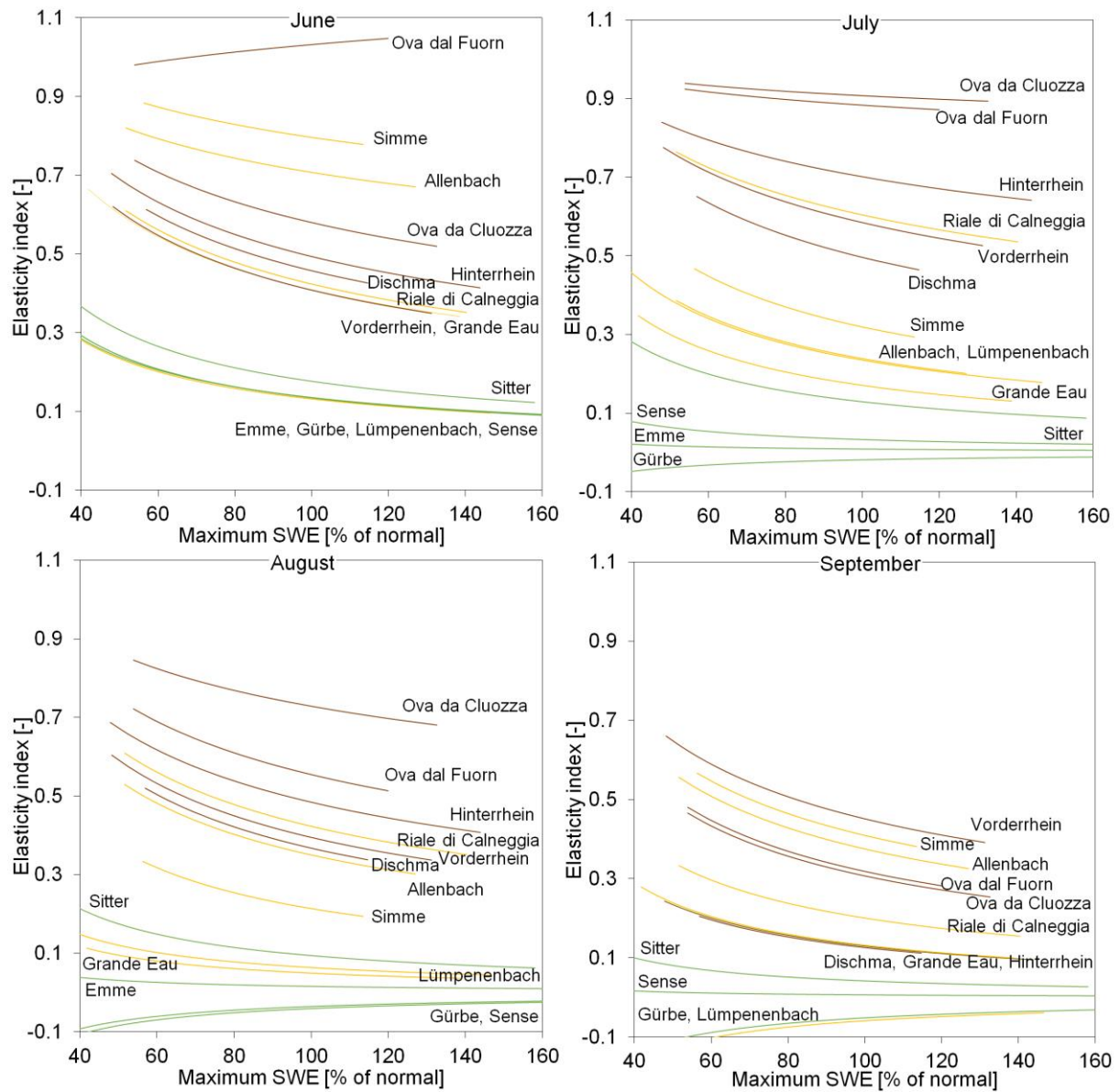


Figure 6. Elasticity index showing the sensitivity of minimum discharge to changes in SWE. The index was calculated from the 50% probability of prediction. Line colors indicate the catchment group according to mean elevation (dark brown: >2000 m a.s.l.; light brown: 1300-2000 m a.s.l.; green: <1300 m a.s.l.).

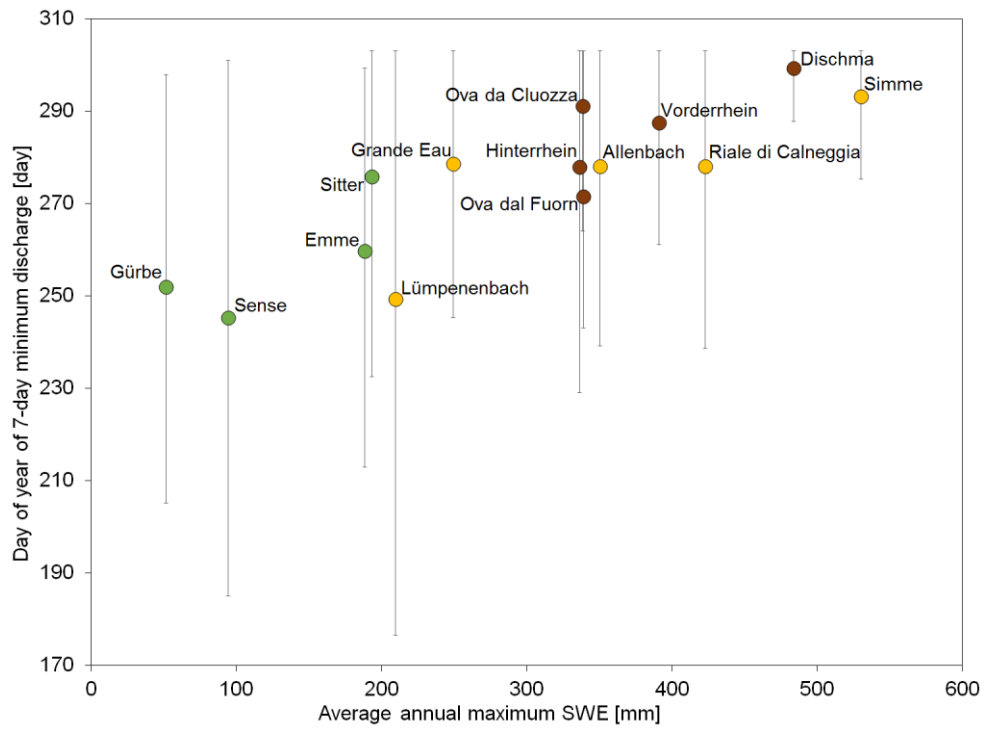


Figure 7. Day of year with 7-day minimum discharge against long-term mean annual maximum SWE. Color circles represent catchment mean and whiskers represent 10% and 90% quantiles. The day of year “1” represents the first day of calendar year (1.1) and day of year “365” represents 31.12. The color of the circle indicates the catchment group according to mean elevation (dark brown: >2000 m a.s.l.; light brown: 1300-2000 m a.s.l.; green: <1300 m a.s.l.).

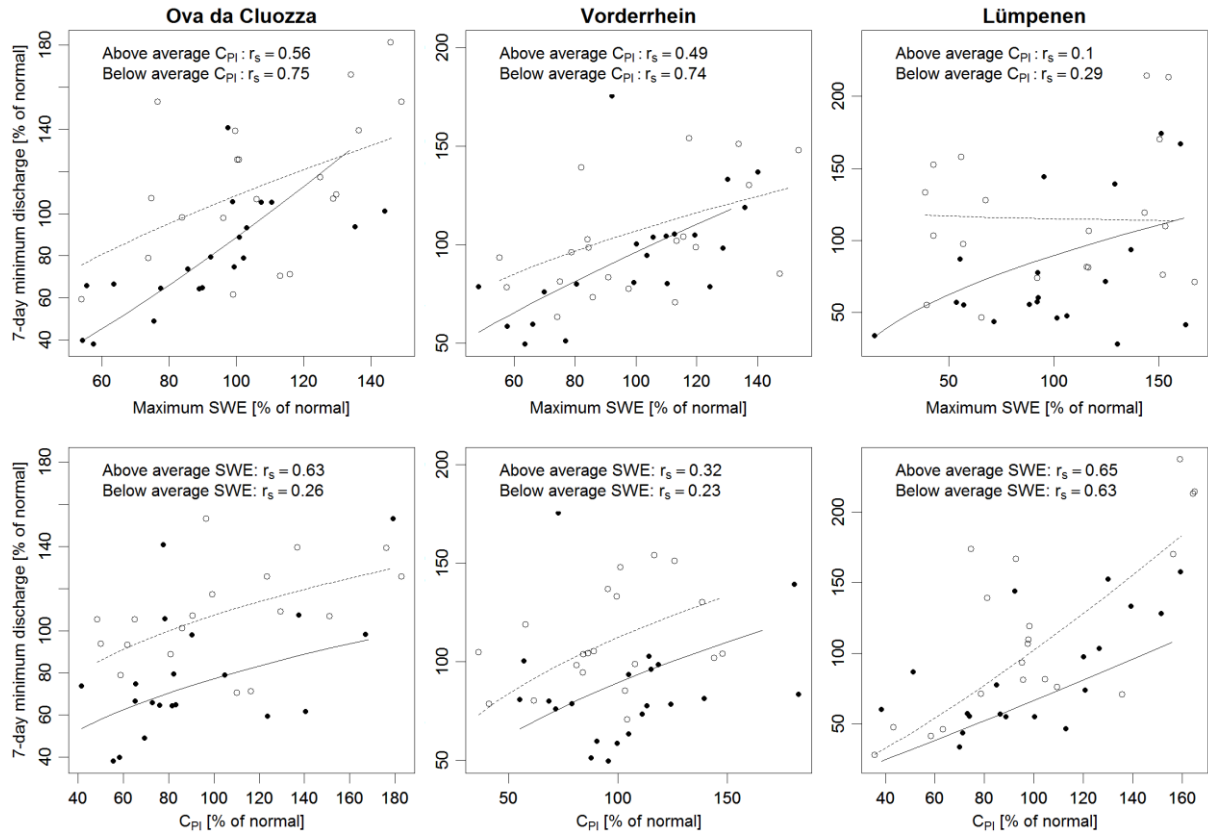


Figure 8. Top plots: 7-day minimum discharge in July against maximum SWE for years grouped according to the current precipitation index C_{PI} . Bottom plots: 7-day minimum discharge in July against current precipitation index C_{PI} for years grouped according to maximum SWE. Lines represent the minimum discharge occurring with a 50% probability; r_s represents Spearman rank correlation coefficient. Transparent circles and dashed lines indicate years with above average values and black points and solid lines indicate years with below average values.

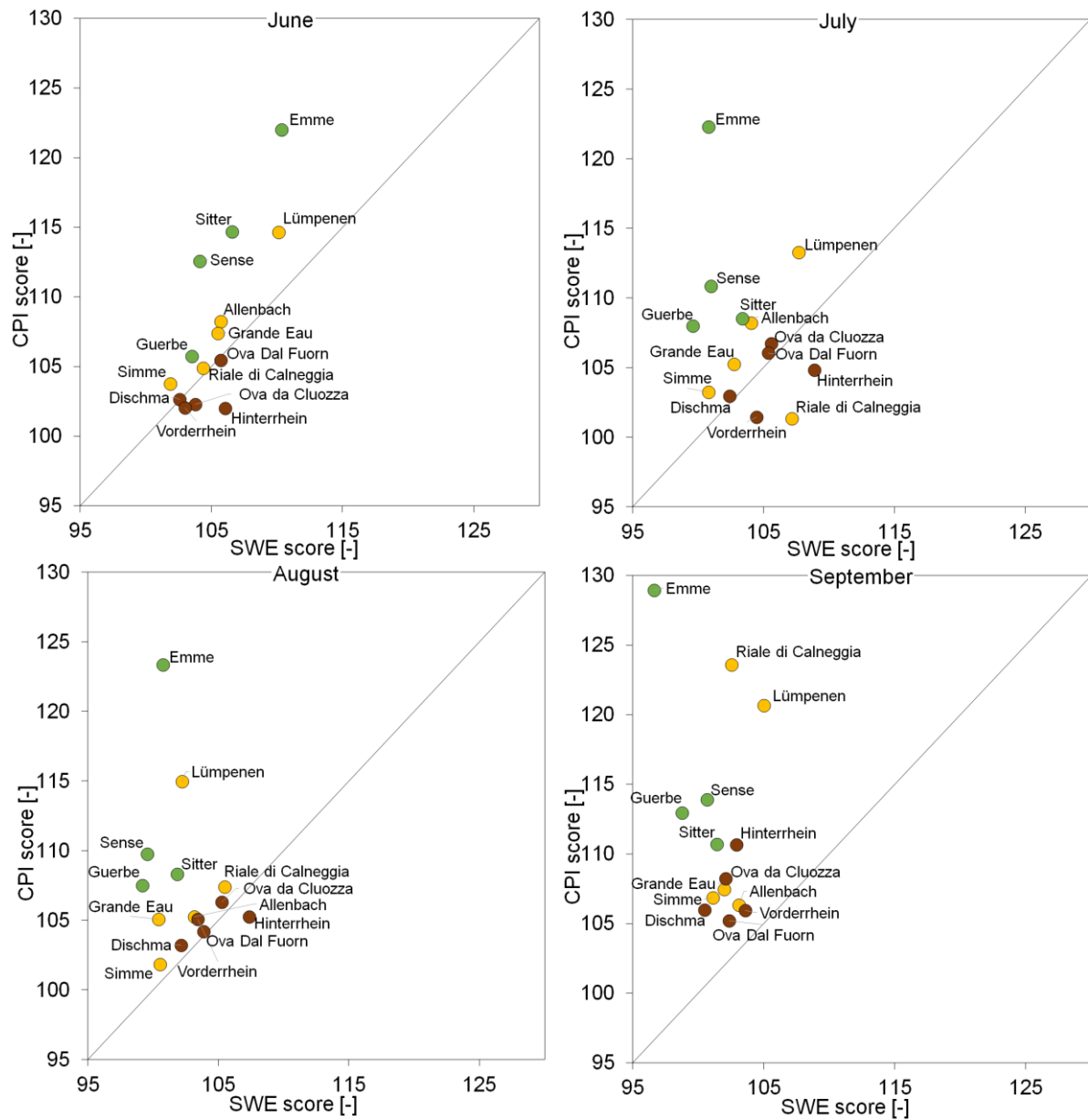


Figure 9. Score plots indicating the combined effect of snow and liquid precipitation on low flows in the different months (four plots for June to September). Points below the one-to-one line indicate catchments with a stronger effect of SWE on low flows compared to spring and summer precipitation (expressed as C_{PI}) and vice versa. The color of the circle indicates the catchment group according to mean elevation (dark brown: >2000 m a.s.l.; light brown: 1300-2000 m a.s.l.; green: <1300 m a.s.l.).