

Supplement of Hydrol. Earth Syst. Sci. Discuss., 12, 639–670, 2015
<http://www.hydrol-earth-syst-sci-discuss.net/12/639/2015/>
doi:10.5194/hessd-12-639-2015-supplement
© Author(s) 2015. CC Attribution 3.0 License.



Supplement of

Long-term monitoring of nitrate-N transport to drainage from three agricultural clayey till fields

V. Ernstsén et al.

Correspondence to: V. Ernstsén (ve@geus.dk)

1 **Supplementary material**

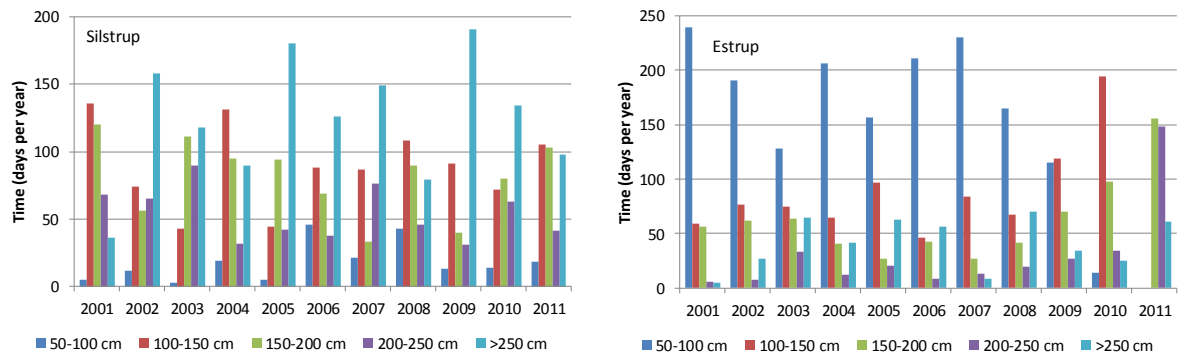
2 **Table S1.** Precipitation (P), evaporation (E), drainage discharge (D), and leaching to
 3 groundwater (G) for the agrohydrological year (June-June) 2000-2012 at Faardrup, Silstrup,
 4 and Estrup.

Year	Faardrup						Silstrup						Estrup					
	P	E	D	G	D/(D+G)	D/P	P	E	D	G	D/(D+G)	D/P	P	E	D	G	D/(D+G)	D/P
	mm y ⁻¹			%			mm y ⁻¹			%			mm y ⁻¹			%		
00-01	639	383	50	206	20	8	909	413	217	279	44	24	887	420	356	111	76	40
01-02	810	514	197	99	67	24	1034	470	227	338	40	22	1290	516	505	270	65	39
02-03	636	480	49	107	31	8	879	537	81	261	24	9	939	466	329	144	70	35
03-04	685	505	36	144	20	5	760	517	148	94	61	19	928	499	298	131	69	32
04-05	671	469	131	72	65	20	913	491	155	267	37	17	1087	476	525	86	86	48
05-06	557	372	28	158	15	5	808	506	101	201	33	13	897	441	258	199	56	29
06-07	796	518	202	77	72	25	1150	539	361	249	59	31	1365	515	547	303	64	40
07-08	645	522	111	12	90	17	877	434	200	242	45	23	1045	478	521	46	92	50
08-09	713	463	46	204	18	6	985	527	161	296	35	16	1065	480	523	62	89	49
09-10	624	415	54	155	26	9	835	402	203	230	47	24	1190	533	499	158	76	42
10-11	694	471	133	90	60	19	1063	399	172	492	26	16	1158	486	210	462	31	18
11-12	746	395	98	252	28	13	1103	429	230	444	34	21	1222	406	479	377	56	39
Average	685	459	95	131	43	13	943	472	188	283	40	20	1089	476	421	196	68	39

5

6

7



1

2 **Fig. S1.** Number of d with the groundwater table at 50-100 cm, 100-150 cm, 150-200 cm,
 3 200-250 cm, and deeper than 250 cm at Silstrup and Estrup.

4

5