

1 Long-term monitoring of nitrate transport to drainage from 2 three agricultural clayey till fields

3 V. Ernstsén¹, P. Olsen², and A. E. Rosenbom¹

4 ¹Geological Survey of Denmark and Greenland, Øster Voldgade 10, DK-1350 Copenhagen K, Denmark

5 ²Aarhus University, Department of Agroecology, Blichers Allé 20, DK- 8830 Tjele, Denmark

6 Correspondence to: V. Ernstsén (ve@geus.dk)

7 **Abstract**

8 The application of nitrogen (N) fertilisers to crops grown on tile-drained fields is required to
9 sustain most modern crop production, but it poses a risk to the aquatic environment since tile
10 drains facilitate rapid transport pathways with no significant reduction in nitrate. To maintain
11 the water quality of the aquatic environment and the provision of food from highly efficient
12 agriculture in line with the EU's Water Framework Directive and Nitrates Directive, field-
13 scale knowledge is essential for introducing water management actions on-field or off-field
14 and producing an optimal differentiated N-regulation in future. This study strives to provide
15 such knowledge by evaluating on 11 years of nitrate-N concentration measurements in
16 drainage from three subsurface-drained clayey till fields (1.3-2.3 ha) representing
17 approximately 71 % of the surface sediments in Denmark dominated by clay. The fields differ
18 in their inherent hydrogeological field settings (*e.g.* soil-type, geology, climate, drainage and
19 groundwater table) and the agricultural management of the fields (*e.g.* crop type, type of N
20 fertilisers and agricultural practices). The evaluation revealed three types of clayey till fields
21 characterised by: (i) low net precipitation, high concentration of nitrate-N, and short-term low
22 intensity drainage at air temperatures often below 5 °C; (ii) medium net precipitation, medium
23 concentration of nitrate-N, and short-term medium intensity drainage at air temperatures often
24 above 5 °C; and (iii) high net precipitation, low concentration of nitrate-N and long-term high
25 intensity drainage at air temperatures above 5 °C. For each type, on-field water management
26 actions, such as the selection of crop types and introduction of catch crops, appeared relevant,
27 whereas off-field actions only seemed relevant for the latter two field types given the
28 temperature-dependent reduction potential of nitrate off-field. This initial well-documented
29 field-scale knowledge from fields that are representative of large areas in Denmark is a first
30 step towards establishing a differentiated N-regulation for clayey till areas. Additionally, it

- 1 provide a unique starting point by identifying important parameters for future mapping of
- 2 catchment-scale variations in nitrate concentrations and fluxes.
- 3
- 4

1 **1 Introduction**

2 Future regulations covering aquatic environments under the Nitrates Directive (EEC, 1991),
3 the EU Water Framework Directive (EC, 2000), the EU Groundwater Directive (EC, 2006)
4 and additional national laws and regulations (Danish-EPA, 2012) call for long-term
5 monitoring data to describe the complex interaction between soil, geology, geochemistry and
6 hydrology at a local level as well on larger scales. Since Denmark presented its first national
7 hydrological action plan in 1985, several political agreements have been adopted the aim of
8 protecting the aquatic environment and nature in general. Recently, the Danish Commission
9 on Nature and Agriculture issued a report (The_Commission_on_Nature_and_Agriculture,
10 2013) that recommended that nitrogen (N) regulations should be adapted locally in future and,
11 if possible, at field scale. As an integrated part of such a policy, there is a need to develop
12 tools to identify fields that are vulnerable or non-vulnerable to nitrate-N leaching.

13 N is an essential plant nutrient, which is why N-application to agricultural land is essential
14 for sustaining food and fibre production for a rapidly growing population. The agricultural
15 sector, however, has been identified as the largest nonpoint source contributor of nitrate to
16 surface and groundwater bodies (Bakhsh *et al.*, 2004; Beaudoin *et al.*, 2005; Billy *et al.*,
17 2011). The effects of agriculture may extend beyond the boundaries of fields or farms since
18 the drainage systems will inevitably affect the flow pathways of water away from agricultural
19 land and into the receiving water bodies (Robinson and Rycroft, 1999). However, the
20 nonpoint loss of N from agricultural fields is controlled by an array of factors such as soil
21 properties (physical, chemical and biological), climatic factors (precipitation and temperature
22 patterns), farming practices (cropping system, fertilisation and tillage) and hydrology (Billy *et*
23 *al.*, 2011; Dinnes *et al.*, 2002). Thus, high doses of N fertilisers may increase the N-transport
24 to drainage, especially when there is no further crop response (Delin and Stenberg, 2014).
25 Crop response by catch crops in intensive agriculture in northern France has reduced the mean
26 concentration by 50 % on an annual scale (Beaudoin *et al.*, 2005) and a winter cover of
27 mustard has reduced the nitrate-N concentrations in temperate soils (Premrov *et al.*, 2014).

28 The installation of tile drains is a common agricultural water management practice for
29 improving moisture and aeration conditions (Tiemeyer *et al.*, 2010; Van Der Ploeg *et al.*,
30 1999) in areas with shallow groundwater and seasonally perched groundwater tables. The
31 presence of tile drains enhances crop yields on soils, which are highly productive and poorly
32 natural drained, and helps reduce year-on-year variability in yields (Nangia *et al.*, 2010) by
33 promoting earlier sowing and improving traffic ability. The drains remove water from the

1 land more quickly than under natural conditions and increase infiltration and deliver shallow
2 groundwater more quickly to surface water, preventing its recharge to groundwater. This
3 artificial drainage modifies N-dynamics by facilitating the rapid transport of nitrate-N and
4 greatly reducing or even suppressing the water residence time within natural retention zones.
5 However, tile drain systems not only remove excess water from the root zone, but also
6 facilitate N-transport, primarily as soluble nitrate-N, from the bottom of the root zone to the
7 edge of the field (Billy *et al.*, 2011; Mulla and Stroock, 2008) and to surface water (Cordeiro *et*
8 *al.*, 2014; Eidem *et al.*, 1999; Gilliam *et al.*, 1979; Lapen *et al.*, 2008). They also contribute to
9 hypoxia (Billy *et al.*, 2011). Drainage increases N-losses from agricultural areas as compared
10 to former undrained fields. In addition, no biogeochemical processes such as denitrification
11 are known to occur in buried pipes, which are considered inert pathways (Billy *et al.*, 2013;
12 Gilliam *et al.*, 1999) whereas denitrification processes may be common at temperatures above
13 approximately 5 °C in the root zone with renewable source of bioavailable organic matter and
14 restricted access of oxygen due to high water saturation or high microbial activity
15 (Christensen *et al.*, 1990; Ernstsens *et al.*, 1998). Drainage decreases the possibilities of nitrate
16 being denitrified or adsorbed by plants on-field (Gilliam *et al.*, 1999) and off-field, the
17 temperature-drainage signatures are crucial for denitrification in natural and constructed
18 wetlands. Therefore the loss of nitrate-N leaching from the root zone is not solely an
19 environmental concern, but also an economic loss to farmers (Schjonning *et al.*, 2013).

20 The greatest intensity of drainage in Europe is concentrated in the northern areas around
21 the Baltic and North Seas. This is largely due to climatic conditions and the presence of
22 glacially derived clayey tills that can cause prolonged water-logging (Robinson and Rycroft,
23 1999). Since around 1850, 50 % of agricultural land in Denmark has been systematically tile
24 drained, with horizontal spacing of 8-20 metres (Olesen, 2009) and a total length of around
25 750,000 km (Breuning-Madsen, 2010).

26 A number of factors may affect the loss of nitrate-N from fields *via* drainage. The local
27 climate (temperature and precipitation), soil type, crop type, length of growing season,
28 options of winter cover crops and catch crops, tillage and soil management are also important
29 factors in the concentration and leaching of nitrate-N from the root zone. Some of these
30 factors are field specific and cannot be changed, *e.g.* the nitrate uptake of field crops is highly
31 variable in the course of a year and between crops as the N uptake and growth stage are very
32 complex (Gastal and Lemaire, 2002), whereas other factors may be adjusted to minimise the
33 N-loss for the benefit of the environment and farmers' incomes.

1 To the authors' knowledge, there has been limited documentation of nitrate-N
2 concentrations and leaching *via* tile drain systems from field-size areas that have been
3 monitored over a long period. In Denmark, data exist on nitrate-N concentrations and
4 leaching from a few short-term local-scale studies (Bennetzen, 1978; Hansen and Pedersen,
5 1975; Pedersen, 1983; Simmelsgaard, 1998; Simmelsgaard and Djurhuus, 1998). Common
6 among these studies is that there is no knowledge of the specific field contribution of nitrate-
7 N to drainage because the extent of the field's tile drain system is unknown or because there
8 are different fields with different crops contributing to the drainage. To go from field scale to
9 catchment scale, smaller-scale monitoring is important to provide an understanding of the
10 ways in which field-scale processes influence catchment-scale discharge and water quality
11 (Rozemeijer *et al.*, 2010; van der Velde *et al.*, 2010).

12 To be able to optimise the use of N in agriculture and minimise nitrate leaching to the
13 aquatic environment, it is imperative to be able to identify a field's natural ability to reduce
14 nitrate. The aim of this study was twofold: (i) to provide detailed field-scale insight with
15 regard to the impact of inherent conditions (air temperature, precipitation, and
16 hydrogeological setting) and management (type of crops, crop development, amount and
17 source of N, and time for application of N fertilisers) on nitrate transport to drainage obtained
18 from long-term monitoring in three agricultural clayey till fields exposed to different climatic
19 conditions; and (ii) to elaborate on the impact of such detailed insight on future N regulation
20 and N management "on-field" and "off-field"

21 **2 Material and Methods**

22 **2.1 Field descriptions**

23 Three fields (Faardrup, Silstrup and Estrup) were selected to cover different types of clayey
24 geological settings and climates, primarily expressed by the amount of annual precipitation
25 (Fig. 1). The study sites are representative for about 71 % of the clayey surface sediments in
26 Denmark, with Faardrup representing 30 %, Silstrup also 30 % and Estrup 11 % (Barlebo *et*
27 *al.*, 2007). A summary of the main characteristics of each field is provided in Tables 1 and 2
28 (Lindhardt *et al.*, 2001; Rosenbom *et al.*, 2015).

29 The three fields (1.3 - 2.3 ha) are located on clay till plains with a small slope (0-3 %).
30 The clayey till plain at Faardrup is homogenous, the clayey till plain at Silstrup comprises
31 dislocated Oligocene clay, and at Estrup there is a complex structure with deposits of
32 different ages and compositions. At Faardrup and Silstrup, located on sediments from the

1 Late Weichselian age (about 15000 years BP), moderately well-drained argiudoll was
2 mapped with hapludoll (Silstrup) and both hapludoll and vermudoll (Faardrup). Estrup is
3 located on older sediments deposited under the Saalian glaciation (about 100,000 years BP)
4 with argiudoll and glossudalf (Table 2).

5 The content of organic matter in the surface layer disturbed by cultivation (Ap-horizon)
6 was lowest (1.4-1.5 %C) in Faardrup, medium in Silstrup (1.6-2.0 %C), and highest (1.6-3.2
7 %C) in Estrup. In all fields, the C-contents decreased markedly at depths just below the Ap-
8 horizon to contents of 0.06 to 0.8 % C. The clay content in the upper 0.2 m (Ap horizon) was
9 10-27 % and varied to six metres below the surface at between 1-65 % due to the
10 heterogeneity of the clayey till. Postglacial leaching processes have formed an upper calcium-
11 free zone about one metre thick in the youngest sediments of Faardrup and Silstrup and down
12 to 1 to 4 metres at Estrup, due to the much longer ongoing weathering processes. In the
13 calcareous zone below, the CaCO₃ content varied between 21 % and 82 % in all three fields.

14 Subsurface tile drains were installed in the fields between the 1940s and 1960s. The drains
15 were established at a depth of approximately 1.1 m with a horizontal spacing of 10-20 m.
16 Before monitoring began, the fields' tile drain system was isolated from the surrounding tile
17 drain systems to ensure that drainage only came from the fields. Any modifications were
18 made outside the monitoring fields (Lindhardt *et al.*, 2001).

19 **2.2 Farming practices**

20 The farming practices for the fields were in line with conventional practices in the different
21 regions and with the application of nitrogen as recommended as good management practice in
22 Denmark. In 2001-2011, crops of spring barley and winter wheat were the most common
23 types in rotation with spring or winter rape, fodder or sugar beets and maize in all the fields.
24 No catch crop has been grown in any of the fields. Red fescue for grass seed production was
25 grown in Faardrup and Silstrup, as well as peas in Silstrup and Estrup. Each year, the amount
26 of N fertilisers applied was adjusted to suit the selected crop type and the previous year's
27 climatic conditions. As an average for 2001-2011, the annual N-application was 136 kg N ha⁻¹
28 yr⁻¹ at Faardrup, 139 kg N ha⁻¹yr⁻¹ at Silstrup, and 142 kg N ha⁻¹yr⁻¹ at Estrup (Table 3).
29 There were considerable differences in the average annual N-application, ranging from 0 kg N
30 ha⁻¹yr⁻¹ for the pea crop to 223 kg N ha⁻¹yr⁻¹ for spring barley undersown with red fescue. At
31 Faardrup only inorganic N fertilisers were used, whereas at Silstrup and Estrup animal slurry
32 was applied from time to time (Table 3).

1 **2.3 Monitoring setup**

2 The specific growth stages for the different crops were characterized using the BBCH scale
3 (Meier, 2001), e.g., the BBCH growth stages for cereals: germination (00-09), leaf
4 development (10-19), tillering (20-29), stem elongation (30-49), inflorescence emergence
5 (51-59), flowering (61-69), development of fruit (71-77), ripening (83-89), and senescence
6 (92-99) (Meier, 2001). Precipitation was measured on site and air temperature was recorded at
7 nearby meteorological stations. The water table was registered in piezometers constructed of
8 6.3 cm diameter polyvinyl chloride with 0.5 m screens placed at depths of 3.0-3.5 m, 4.5-5.0
9 m, and 6.1-6.6 m at the edge of the Faardrup, Estrup, and Silstrup fields. Daily monitoring of
10 the water table at Silstrup and Estrup was performed using a D-Diver (Van Essen Instruments,
11 Delft, The Netherlands) and monthly monitoring of the water table at Faardrup was performed
12 with a hand-held water level meter, type 010 (HT Hydrotechnik, Obergünzburg, Germany).
13 ISCO samplers (Teledyne ISCO, Lincoln, NE, USA) were used to collect samples of drainage
14 water. Drainage water was sampled time proportionally until July 2004 and then flow
15 proportionally, with sub-samples collected for every 3000 L of drainage during the winter
16 season (September-May) and for every 1500 L during the summer season (June-August).
17 Each week, all the collected subsamples were pooled and a sample analysed in the laboratory.

18 **2.4 Nitrate-N analysis**

19 Samples of drainage were refrigerated at all times until analysis. The water samples were 0.45
20 μm filtrated (Millex HV syringe filter, Millipore, Ireland) and nitrate-N ($\text{NO}_3\text{-N}$) was
21 measured using a Metrohm Anion system equipped with a Metrosep A Supp 15 – 250 IC
22 column and a suppressor module (MSM) and with conductivity detection (Mehrohm, Herisau,
23 Switzerland). The eluent was a mixture of 1 mM NaHCO_3 and 3.2 mM Na_2CO_3 . The system
24 was connected to an 838 Advanced IC Sample processor (Mehrohm, Herisau, Switzerland).

25 **2.5 Calculation of N-flux in drainage**

26 The total mass of nitrate-N transported out of the field by drainage was calculated by
27 multiplying the concentration of nitrate-N for the pooled water sampled by the drainage
28 volume between the time of sampling and the previous time of sampling. The nitrate-N losses
29 were all calculated as kg N ha^{-1} , taking into account the different sizes of the three fields.

1 **3 Results**

2 **3.1 Climate**

3 All three fields are located in a temperate climate with average air temperatures between 8.8
4 °C and 9.0 °C for 2001-2011. During monitoring, the minimum (yearly) average temperatures
5 were 5.6-5.8 °C and the maximum (yearly) average temperatures were 11.4-12.2 °C, with
6 summer temperatures up to 30.4-32.1 °C and winter temperatures down to -14.1 °C and -19.5
7 °C (Fig. 2 and Table 4). The geographical location of the fields led to differences in annual
8 precipitation. Average annual precipitation between 2001 and 2012 was 685 mm at Faardrup
9 and 943 mm at Silstrup, with the highest being Estrup at 1089 mm (Table 1). As the fields'
10 average annual evaporation only varied slightly (between 459 mm and 476 mm), the annual
11 leaching to drainage and groundwater was 226 mm at Faardrup, 471 mm at Silstrup, and 617
12 mm at Estrup (Table 1).

13 In 2001-2012, 49 %, 16 %, and 3.3 % of drainage at Faardrup was on days on which air
14 temperatures were above 5 °C, 10 °C and 15 °C respectively (Fig. 2 and Table 5). At Silstrup
15 56 %, 12 %, and 0.3 % and at Estrup 58 %, 22 %, and 5.4 % of drainage occurred in the
16 respective temperature categories (Fig. 2 and Table 5).

17 **3.2 Hydrogeological setting**

18 At Faardrup, monthly registration of the groundwater table at the edge of the field showed the
19 overall pattern over the year, even though its full amplitude was not monitored as the filter
20 had not been installed sufficiently deeply to register deepest water tables (Fig. 3). The water
21 table approached the soil surface by the end of autumn and during winter, and dropped in
22 spring, summer and early autumn to about 3.5 m depth or even deeper. During 2001-2012, the
23 average daily drainage was 0.26 mm d⁻¹ and max daily drainage was 14.9 mm d⁻¹ during an
24 average 88 days of drainage per year (Table 5). Typically, drainage was below 3 mm d⁻¹ and
25 rarely above 10 mm d⁻¹ (Fig. 3). For 2001-2012, the average annual drainage was 43 % of
26 total discharge to drainage plus groundwater (Table 1).

27 At Silstrup, the groundwater table was above drainage depth from late autumn to late
28 winter and dropped during spring and summer to a depth of 3.82 m at its lowest (October
29 2009) (Fig. 3). During 2001-2011, the average daily drainage was 0.50 mm d⁻¹ and max daily
30 drainage was 27.8 mm d⁻¹ during an average 86 days of drainage (Table 5). Often, the
31 drainage events were above 5 mm d⁻¹, a few were up to 10 mm d⁻¹, with a maximum drainage

1 of 28 mm d⁻¹ in March 2010 (Fig. 3). For 2001-2012 the average annual drainage was 40 % of
2 total discharge to drainage plus groundwater (Table 1).

3 In Estrup, the groundwater table was highly dynamic and only located deeply for short
4 periods. The lowest groundwater table (4.35 m) was in July 2008 (Fig. 3). On average for
5 2001-2012, the average daily drainage was 1.16 mm d⁻¹ and max daily drainage was 57.8 mm
6 d⁻¹ during an annual average 243 days of drainage (Table 5). Daily drainage was often above
7 5-6 mm d⁻¹, in some cases up to 10 mm d⁻¹, and the highest amounts registered were 35 mm d⁻¹
8 in March 2005 and 58 mm d⁻¹ in February 2010 (Fig. 3). For 2001-2012 the average annual
9 drainage was 68 % of total discharge to drainage plus groundwater (Table 1).

10 **3.3 Management - N fertilisers and crop types**

11 The time of application and amount of N fertilisers applied to the crops were in line with
12 present legislation (concerning application of slurry) and the type of crop (concerning
13 application of slurry and inorganic N fertiliser) (Ministry of Food, Agriculture and Fisheries,
14 The Danish AgriFish Agency, <http://agrifish.dk/>).

15 At the Faardrup field only inorganic N fertiliser was used (Table 3). The time of
16 application for the different crops is indicated in Fig. 4. For sugar beet, spring barley and
17 maize, N fertiliser was applied immediately before or after sowing. N fertiliser was applied
18 twice during the growing season for winter cover crops: for winter wheat the first occasion
19 was at about growth stage BBCH 12-26 and the second occasion was at about BBCH stage
20 23-32, while for winter rape it was at around sowing time and at growth stage 14-37. The red
21 fescue received small amounts of fertiliser just after the spring barley was harvested and at the
22 beginning of the growing season. The application of N fertilisers was not reflected in
23 simultaneous/subsequent increases in nitrate-N concentrations in the drainage. A total of 16
24 applications of N were performed.

25 The time of N-application at Silstrup was as described for Faardrup. A crop of pea in 2001
26 received no N fertilisation (Table 3 and Fig. 4). At Silstrup inorganic N fertiliser, injected
27 slurry (pig/cattle) or a combination of inorganic N fertiliser and slurry were applied to the
28 crops. Application took place at BBCH stage 20-30 for both winter wheat (2004 and 2007)
29 and red fescue (2010 and 2011). In 2001-2012, the application of inorganic N fertiliser (in
30 total 13 times) and slurry (in total seven times) was not reflected in immediate increased N-
31 concentrations in the drainage, except for fodder beet in 2008.

32 At Estrup, inorganic N fertiliser, injected slurry (cattle/sow/pig) or a combination of the
33 two was applied to all the crops except the pea crop (Table 3 and Fig. 4). Application of

1 fertilisers was performed at BBCH 20-30 for winter wheat and at about BBCH 30 for winter
2 rape. In total, inorganic N fertiliser and slurry were applied 12 times and seven times
3 respectively. In seven of the 11 years (2003, 2005, 2006, 2007, 2008, 2009 and 2010) the
4 application of N fertilisers was reflected in short-term increases (maximum concentration of
5 47 mg N L⁻¹ in 2007) in drainage from the field.

6 **3.4 Nitrate concentrations**

7 In Faardrup, the nitrate-N concentrations in drainage were often well above the European
8 limit for drinking water supply (11.3 mg N L⁻¹) (Fig. 2). The drainage signature was
9 characterised by a large range of nitrate-N concentrations (3-34 mg N L⁻¹). Prolonged high
10 nitrate-N concentrations were measured below bare soil after harvesting winter wheat in
11 2000/2001, 2004/2005 and 2009, and after harvesting maize in 2006. Increasing nitrate-N
12 concentrations were measured up to a BBCH growth stage of about 30 for winter rape
13 (2002/2003, 2006/2007) and winter wheat (2007/2008). At later BBCH stages and up to
14 harvest, nitrate-N concentrations decreased. Decreasing nitrate-N concentrations were also
15 observed during the growing seasons of sugar beet (2001), spring barley (2002, 2006), maize
16 (2005) and red fescue (2010/2011).

17 In 2001-2012, the nitrate-N concentrations in drainage at Silstrup varied between 1-34 mg
18 N L⁻¹ and rarely exceeded the European limit for drinking water (Fig. 2). Prolonged elevated
19 nitrate-N concentrations were measured below bare soil after fodder beet (2000/2001,
20 2008/2009), spring barley (2001/2002), maize (2002/2003) and winter wheat (2004/2005,
21 2007/2008), whereas the nitrate-N concentrations in drainage after red fescue remained at a
22 constant low level (1-2 mg N L⁻¹) (Fig. 2). Remarkably high (maximum 22 mg N L⁻¹) nitrate-
23 N concentrations, well above the EU limit for drinking water, were recorded only following
24 the winter wheat crop (2003/2004).

25 Except for some short-term peak concentrations, the N-concentration in drainage at Estrup
26 was below the EU limit for drinking water (Fig. 2). This also applied to the periods with bare
27 soil, where the nitrate-N concentrations remained almost constant, except following spring
28 barley (2004/2005) when concentrations decreased, and after winter wheat (2011/2012) when
29 they increased. Concentrations of nitrate-N decreased during the growing seasons of fodder
30 beet (2003), winter wheat (2007) and winter rape (2009).

1 3.5 Nitrate-N fluxes

2 At Faardrup, short-term N-leaching events, often in winter (or the start of the year), with daily
3 fluxes of nitrate-N below $1 \text{ kg N ha}^{-1}\text{d}^{-1}$ were common (Fig. 2). Some leaching events were in
4 the range of $0.5\text{-}1 \text{ kg N ha}^{-1}\text{d}^{-1}$ and very few events were in the range of $1\text{-}4 \text{ kg N ha}^{-1}\text{d}^{-1}$. The
5 nitrate-flux signature was highly related to the drainage events, as indicated by the step-like
6 shape in 2002/2003, 2005 and 2011 (Fig. 5) and a good correlation ($R^2 = 0.83$) between
7 cumulated nitrate flux and drainage intensity in the time between water sampling (Fig. 6). In
8 this field, annual nitrate fluxes varied between 3 and $24 \text{ kg N ha}^{-1}\text{yr}^{-1}$ and made up the
9 equivalent of 2-19 % of the annual applied N fertilisers (Fig. 7). The total nitrate flux for
10 2001-2012 in drainage was 142 kg N ha^{-1} and in this period $1493 \text{ kg N ha}^{-1}$ was applied as N
11 fertilisers (Table 3).

12 Most nitrate-N leaching events in 2001-2012 at Silstrup took place during the autumn and
13 winter, and often the daily fluxes were below $1 \text{ kg N ha}^{-1}\text{d}^{-1}$. Only a few were within the range
14 of $1\text{-}2 \text{ kg N ha}^{-1}\text{d}^{-1}$ and were rarely above $2 \text{ kg N ha}^{-1}\text{d}^{-1}$ (Fig. 2). Large and lasting drainage
15 (2002, 2004, 2006/2007, 2008 and 2009/2010) coincided with high N-fluxes out of the field
16 (Fig. 5), and increasing N-fluxes with increasing drainage cumulated for the time interval
17 between sampling ($R^2=0.60$) (Fig 6). The annual export of nitrate-N from the field with
18 drainage varied between $3\text{-}32 \text{ kg N ha}^{-1}\text{yr}^{-1}$, equivalent to 2-33 % of the annual applied N
19 fertilisers (inorganic N fertilisers and slurry) (Fig. 7). For the period 2001-2012 the total
20 nitrate-N leaching from the field was 153 kg N ha^{-1} , as compared to the total application of
21 $1524 \text{ kg N ha}^{-1}$ (Table 3).

22 Leaching from Estrup was present throughout the year, often with daily nitrate-N fluxes of
23 below $1 \text{ kg N ha}^{-1}\text{d}^{-1}$, and only above $1 \text{ kg N ha}^{-1}\text{d}^{-1}$ during a few events (Fig. 2) and the
24 correlation between the N-fluxes and drainage, cumulated between sampling, was $R^2=0.55$
25 (Fig. 6). The drainage signature at Estrup, with a long drainage period and renewable pool of
26 crop-generated available organic matter with low nitrate fluxes, made the cumulated N-
27 leaching curve very smooth, with only a few small steps (Fig. 5). The annual nitrate-N
28 leaching was $13\text{-}32 \text{ kg N ha}^{-1}\text{yr}^{-1}$, the equivalent of 8-22 % of the total amount of N applied to
29 the field (Fig. 7). In 2001-2012 the total loss with drainage was 205 kg N ha^{-1} and the total N-
30 application was $1563 \text{ kg N ha}^{-1}$ (Table 3).

1 **4 Discussion**

2 **4.1 Climate**

3 For 2001-2012, the average air temperature at the three fields was approximately the same
4 (8.8–9.0 °C) throughout the years studied. The maximum temperatures (30-32 °C) were
5 measured in June to August and the minimum (-14.1 - -19.5°C) in December to February.
6 Even though the average air temperatures varied only slightly between the three fields, air
7 temperature during drainage was markedly different. At Faardrup, an often late drainage
8 resulted in 51 % run-off at temperatures below 5 °C (below biological “zero”) whereas at
9 Silstrup and Estrup most drainage (56 % and 58 %) was at temperatures above 5°C. At
10 Estrup, with drainage taking place during about two-thirds of the year, 5.4 % of drainage was
11 at temperatures above >15 °C. The field-specific temperature-drainage signature provides
12 valuable input to future water management, including on-field and off-field N regulation.

13 The almost identical temperature regimes made evaporation vary only slightly between
14 the three fields, and hence groundwater recharge was lowest in Faardrup where there was the
15 least precipitation. The low groundwater recharge at Faardrup generated a higher
16 concentration of nitrate-N in water leaving the root zone from the different crops and from
17 bare soil than at the two other fields in Silstrup and Estrup. Due to the low recharge and
18 despite Faardrup receiving the lowest total amount of N as well as in a form readily available
19 to plants, concentrations of nitrate-N in drainage from this field remained highest. At Silstrup
20 and Estrup much higher precipitation managed to keep the average concentration of nitrate-N
21 below the EU limit for drinking water.

22 **4.2 Hydrological setting**

23 The drainage signatures were significantly different at the three fields, with each
24 representative of its own type due to the local climatic and hydrological conditions. At
25 Faardrup, where there is low precipitation and recharge and a long-lasting deeply located
26 groundwater table, drainage runoff was short-lived (on average 88 days year⁻¹), commenced
27 late (middle of winter), was at the lowest air temperature (51 % at <5 °C) and was of low
28 intensity (average 0.26 mm d⁻¹). Compared to the other two fields, Silstrup had a medium
29 precipitation and discharge. The groundwater table was located deep for a long period of time,
30 whereas drainage (on average 86 days year⁻¹) often started in autumn at higher temperatures
31 (56 % at >5 °C), and was of a higher intensity (average 0.50 mm d⁻¹). At Estrup, where there
32 is the highest precipitation and recharge as well as a shallow and highly dynamic ground

1 water table, drainage occurred most of the year (on average 243 days year⁻¹), and often at high
2 intensity (1.16 mm d⁻¹). The different drainage signatures also led to differences in the total
3 nitrate-N leaching for 2001-2012, with the least drainage leaching at Faardrup with 142 kg N
4 ha⁻¹, medium leaching at Silstrup with 153 kg N ha⁻¹, and most leaching at Estrup with 205 kg
5 N ha⁻¹. Drainage mainly occurred when a water table was close to the surface. Drainage was
6 only observed a few times at Silstrup (*e.g.* July 2001 and 2002, May 2003 and October 2007),
7 when the groundwater table was far below the drainage depth, due to preferential flow. This
8 flow may rapidly take chemicals from the surface to the tile drain system (Kladivko *et al.*,
9 1999). The combination of site-specific climatic and hydrological conditions resulted in far
10 greater drainage at Estrup (average 68 % in 2001-2012) than at Faardrup (40 %) and Silstrup
11 (43 %), providing the greatest input to groundwater in the latter two fields.

12 Besides the transport of nitrate-N in drainage out of the fields, the prevailing hydrological
13 conditions also strongly influenced the potential for denitrification of nitrate-N released from
14 decaying material such as plant parts and bacteria and other soil fauna and flora. The shallow
15 water table at Estrup for two thirds of the year, together with higher temperatures (58 % at >5
16 °C), made the potential for in-situ denitrification much greater here than at Faardrup and
17 Silstrup, where a deep water table and vadose conditions impaired the presence of the
18 oxygen-free conditions essential for the denitrification process to occur. Under these
19 conditions, in-situ denitrification would be limited to oxygen-free micro-environments.

20 **4.3 N fertilisers**

21 Only at Estrup, with its shallow and highly dynamic groundwater table, were the applications
22 of N fertilisers (inorganic N fertilisers as well as slurry) reflected in the concentration of
23 nitrate-N, but only as a short-term increase in the nitrate-N concentration after application.
24 Even though the applications of N fertilisers at Faardrup and Silstrup were performed at
25 similar plant growth stages, no immediate effects on nitrate-N concentrations were observed.
26 This applied to both inorganic N fertilisers and injected slurry. This may be because most of
27 the N applications were performed just around the time of sowing or at the beginning of the
28 growing season when crops efficiently use up available nitrate-N. Gentry *et al.* (2014) have
29 found that changing from autumn to spring N-application for maize improves water quality in
30 tiled-drained catchments.

31 It seems that current regulations concerning the timing of N application – often in spring
32 – have helped to reduce the immediate impact of nitrate on drainage quality at fields like

1 Faardrup and Silstrup. At Estrup, however, leaching of nitrate could be reduced further if the
2 time for N application is aligned with the weather conditions so that high intensity rainfall is
3 avoided just after application.

4 **4.4 Crop types**

5 The results from all three fields confirmed that the choice of crops and crop rotation had an
6 effect on the leaching of nitrate-N into drainage, primarily due to their different growth
7 periods. Thus it is clear that crops with a long growing season (sugar beet, red fescue, winter
8 rape and winter wheat) help to reduce the concentration of nitrate-N compared to crops with a
9 short growing season (maize, spring barley and pea) and thereby leave the land without
10 vegetation for a longer period of time. Red fescue used the applied N fertilisers most
11 efficiently, and thereby lowered the concentration of nitrate-N to about 1 mg N L^{-1} . Since
12 crops with a short growing period leave soil bare (without winter cover crops or catch crops)
13 at high air (and soil) temperatures, this favours mineralisation and the release of nitrate-N that
14 can percolate to the tile drain system or groundwater in winter months (Premrov *et al.*, 2014).
15 Pea in rotation with wheat at Estrup seemed not to increase the concentration of nitrate-N at
16 Estrup (2001/2002), whereas at Silstrup the concentrations increased markedly (2003/2004),
17 which was similar to observations by Beaudoin *et al.* (2005).

18 **4.5 Nitrate-N concentrations**

19 The nitrate-N concentrations in drainage exhibited annual and seasonal variability over the
20 11-year monitoring period. The final nitrate-N concentrations in drainage were governed by
21 multiple factors, of which climate conditions (precipitation and evaporation) and types of crop
22 were the most significant. Thus, the low precipitation and percolation at Faardrup seemed to
23 be the governing factors behind the field often having the highest nitrate-N concentration in
24 the drainage even though it had the lowest application of N fertilisers. Nitrate-N
25 concentrations at Faardrup for most crop types exceeded the EU limit for drinking water.
26 Profitable crop production at reduced input of N fertilisers may be very difficult in these low
27 rainfall areas, but the right choice of crops combined with growing of catch crops may be a
28 solution for optimal N-management of such fields. The net outcome of catch crops, however,
29 may lead to lower N-fluxes in drainage but higher nitrate concentrations due to the catch crop
30 water uptake and hence lower ground water infiltration.

31 The monitoring highlighted that crop rotation with crops that have long growing seasons,
32 *e.g.* red fescue, winter rape and winter wheat, efficiently reduced the pool-leachable nitrate-N.

1 Reduced nitrate-N loss in drainage with cover crops has also been recorded by Drury *et al.*
2 (2014) when planting a winter wheat cover crop in a cool, humid agricultural soil. The
3 concentrations of nitrate-N at Silstrup and Estrup were below the average concentration of 18
4 mg N L⁻¹ measured in drainage from 15 systematic tile-drained Danish agricultural clayey till
5 areas (3-22 ha) in 1971-1981 (Hansen and Pedersen, 1975; Pedersen, 1983).

6 Unlike at Faardrup, the nitrate-N concentrations at Silstrup and Estrup were often below
7 the EU drinking water limit. Even though the lowest overall nitrate-N concentrations were
8 recorded at Estrup (highest precipitation), the lowest nitrate-N concentrations were measured
9 at Silstrup under a crop of red fescue that efficiently took up all nitrate-N available.

10 **4.6 Nitrate-N fluxes**

11 The results from 2001-2012 showed that the nitrate-N losses were the product of nitrate-N
12 concentrations in the flowing water, and that the amount of water (drainage) was essential for
13 the total impact on the aquatic environment. Leaching of nitrate-N from Faardrup and Silstrup
14 with a deeply located groundwater table during the summer was concurrent with days of high
15 drainage. At Estrup, where the groundwater table is closer to the surface, transport of nitrate-
16 N to the aquatic environment was almost continuous. The annual nitrate-N losses to drainage
17 ranged from 3 to 32 kg N ha⁻¹yr⁻¹, with the lowest after winter rape at Faardrup and the
18 highest after winter wheat and rape at Silstrup and Estrup, respectively. However, despite
19 major differences in climate, hydrological pattern and amounts of N fertilisers applied, the
20 average nitrate-N losses for 2001-2011 were between 13 and 19 kg N ha⁻¹, equivalent to 10-
21 13 % of the amount applied, with the highest losses at Estrup. This was below the 25 % found
22 in a long-term study by Lucey and Goolsby (1993). The losses in kg N ha⁻¹ were within the
23 range of 10 and 29 kg N ha⁻¹ reported for 15 Danish clayey till agricultural areas monitored
24 between 1971 and 1980 (Pedersen, 1983). The average nitrate-N loss for the 15 areas was 22
25 N ha⁻¹yr⁻¹ and therefore higher than the 15 kg N ha⁻¹yr⁻¹ on average for the three fields in the
26 present study. The annual nitrate-N leaching at the three fields fell within the typical range for
27 most European and North American research studies, even though nitrate-N leaching in some
28 studies has reached up to 100 kg N ha⁻¹ (Randall *et al.*, 2008) and up to 105 kg N ha⁻¹ for
29 poorly drained loess soils (loam soils) in Indiana, USA (Kladivko *et al.*, 1999).

30 Due to longer periods of high water saturation of the layers close to the surface, including
31 at times of high air (and soil) temperatures and renewable inputs of surface-derived
32 bioavailable organic carbon in the top two metres (Pabich *et al.*, 2001) *e.g.* from injected

1 slurry, crop material and roots, it was expected that the *in situ* denitrification process would
2 be more efficient for nitrate-N attenuation at Estrup than at Faardrup or Silstrup, where most
3 of the year the groundwater table is down to around a depth of four metres.

4 **5 Summary and conclusions**

5 To the authors' knowledge this study presents the first long-term monitoring (11 years) of
6 nitrate-N concentrations and fluxes in drainage from well-defined tile-drained fields in
7 Denmark. Data collected simultaneously on nitrate-N, drainage, climate (precipitation and air
8 temperature), ground water table, crops (types and growth stage) and N fertilisers (type and
9 time of application) were collected in 2001-2012 at three fields across Denmark. The annual
10 average air temperature and evaporation were around the same in all fields, but the average
11 annual precipitation varied between 685 mm y⁻¹ (Faardrup) at the lowest to 1089 mm y⁻¹ at the
12 highest (Estrup). Major differences in drainage nitrate-N concentrations were identified. Most
13 often the highest concentrations were measured in drainage from the low precipitation field,
14 where concentrations were often above the European limit for drinking water, irrespective of
15 whether the field was with or without crop cover. At the two other fields the nitrate-
16 concentrations in drainage often remained below the EU limit. However, different types of
17 crops strongly influenced N-concentrations, with the lowest nitrate-N concentrations during
18 and after red fescue and the highest concentrations after a pea crop or crops with a short
19 growing season followed by bare soil. Nitrate-N fluxes out of the fields were primarily
20 controlled by the site-specific hydrological setting and only to a minor extent by the nitrate-N
21 content in the drainage. The nitrate-N flux signature of the two fields with deeply located
22 groundwater tables at times and only short and medium-length drainage periods showed
23 major nitrate-N leaching events that were concurrent with intense drainage, whereas more
24 even nitrate-N fluxes were obtained from the field with longer drainage periods. The total
25 impact on the aquatic environment in 2001-2012 due to drainage losses varied between 142
26 and 205 kg N ha⁻¹yr⁻¹, equivalent to 10-13 % of the amount of N fertilisers applied. In fields
27 with a shallow vadose zone as well as lengthy periods of water saturation, a renewable source
28 of organic matter from crop residues may make the denitrification processes much more
29 efficient, and thereby contribute to lower nitrate-N concentrations and nitrate-N fluxes in
30 drainage. The time at which drainage out of the field occurs may also influence the potential
31 efficiency of water management actions off-field, *e.g.* in natural or small constructed wetlands
32 where the effectiveness due to microbial processes and plant growth is highly temperature
33 dependent. Here, as at Estrup, long-term leaching of nitrate-N, including at higher

1 temperatures, presented the best possibilities for off-field water management actions to reduce
2 the impact of nitrate, whereas the short-term leaching of nitrate at Faardrup at low
3 temperatures presented a limited potential of on-field or off-field water management actions
4 due to the very short period of water saturation at low temperatures. The documented
5 differences in nitrate-N fluxes and concentrations at a local scale reveal some of the future
6 challenges that need to be addressed when regulating for N fertilisers at field scale, such as in
7 the regulation already proposed. Future N-regulation cannot be based on a single factor, but
8 has to take a combination of field-specific factors into consideration, such as the inherent
9 physical appearance and agricultural management of the fields. The long-term monitoring has
10 revealed that the outcome of on-field or off-field water management actions could differ
11 between fields with different hydrogeological settings and climatic conditions. This initial
12 well-documented field-scale knowledge from three clayey till fields that are representative of
13 large areas in Denmark is a first step towards establishing a differentiated N-regulation for
14 such areas. A future challenge will be to obtain the necessary knowledge to cover all field
15 types represented within a catchment (van der Velde *et al.*, 2010).

16 **Acknowledgements**

17 This study was funded by the Danish Pesticide Leaching Assessment Programme. The
18 authors would like to thank the many people who have participated in the programme over the
19 past 11 years, especially Finn Plauborg and Finn Christensen for providing climate data, Ulla
20 Husballe Rasmussen and Mette Ejsing-Duun for meticulous analytical work, and Jens
21 Barsballe, Poul Boesen, Henrik Bruun, Lasse Gudmundsson, Kristine Riis Hansen, Søren
22 Have Jepsen, Jens Molbo, Niels Peter Pedersen and Henning C. Thomsen who collected the
23 various types of data.

24

1 References

- 2 Bakhsh, A., Hatfield, J. L., Kanwar, R. S., Ma, L., and Ahuja, L. R.: Simulating nitrate
3 drainage losses from a Walnut Creek watershed field, *Journal of Environmental Quality*, 33,
4 114-123, 2004.
- 5 Barlebo, H. C., Rosenbom, A. E., and Kjær, J.: Evaluation of Pesticide Scenarios for the
6 Registration Procedure, Danish Ministry of the Environment, Danish Environmental
7 Protection Agency, 152 pp., 2007.
- 8 Beaudoin, N., Saad, J. K., Van Laethem, C., Machet, J. M., Maucorps, J., and Mary, B.:
9 Nitrate leaching in intensive agriculture in Northern France: Effect of farming practices, soils
10 and crop rotations, *Agriculture Ecosystems & Environment*, 111, 292-310, 2005.
- 11 Bennetzen, F.: Water-balance and nitrogen-balance by optimal plant-production. 1.
12 Introduction about plant-nutrients and water-pollution with description of the experimental
13 areas, 81-99 pp., 1978.
- 14 Billy, C., Birgand, F., Ansart, P., Peschard, J., Sebiló, M., and Tournebize, J.: Factors
15 controlling nitrate concentrations in surface waters of an artificially drained agricultural
16 watershed, *Landscape Ecology*, 28, 665-684, 2013.
- 17 Billy, C., Birgand, F., Sebiló, M., Billen, G., Tournebize, J., and Kao, C.: Nitrate dynamics in
18 artificially drained nested watersheds, *Physics and Chemistry of the Earth*, 36, 506-514, 2011.
- 19 Breuning-Madsen, H.: Drænrørets indførelse og betydning i et landbrugs-og miljømæssigt
20 perspektiv. In: *Det fremmede som historisk drivkraft i Danmark efter 1742*, Special-
21 Trykkeriet Viborg AS, Viborg, Denmark, 2010.
- 22 Christensen, S., Simkins, S., and Tiedje, J. M.: Temporal patterns of soil denitrification - their
23 stability and causes, *Soil Science Society of America Journal*, 54, 1614-1618, 1990.
- 24 Cordeiro, M. R. C., Ranjan, R. S., Ferguson, I. J., and Cicek, N.: Nitrate, phosphorus, and salt
25 export through subsurface drainage from corn fields in the Canadian prairies, *Transactions of
26 the Asabe*, 57, 43-50, 2014.
- 27 Danish-EPA: Danish Nitrate Action Programme 2008-2015 - Regarding the Nitrates
28 Directive; 91/676/EEC. Copenhagen, Denmark, 2012.
- 29 Delin, S. and Stenberg, M.: Effect of nitrogen fertilization on nitrate leaching in relation to
30 grain yield response on loamy sand in Sweden, *European Journal of Agronomy*, 52, 291-296,
31 2014.
- 32 Dinnes, D. L., Karlen, D. L., Jaynes, D. B., Kaspar, T. C., Hatfield, J. L., Colvin, T. S., and
33 Cambardella, C. A.: Nitrogen management strategies to reduce nitrate leaching in tile-drained
34 midwestern soils, *Agronomy Journal*, 94, 153-171, 2002.
- 35 Drury, C. F., Tan, C. S., Welacky, T. W., Reynolds, W. D., Zhang, T. Q., Oloya, T. O.,
36 McLaughlin, N. B., and Gaynor, J. D.: Reducing Nitrate Loss in Tile Drainage Water with
37 Cover Crops and Water-Table Management Systems, *Journal of Environmental Quality*, 43,
38 587-598, 2014.
- 39 EC: Directive 2000/60/EC of the European Parliament and of the Council of 23 October 2000
40 establishing a framework for Community action in the field of ground water policy.
41 Commission, E. (Ed.), 1, Brussels 2000.

- 1 EC: Directive 2006/118/EC of the European Parliament and the Council of 12 December
2 2006 on the protection of groundwater against pollution and deterioration. Commission, E.
3 (Ed.), 372, European Commission, Brussels, 2006.
- 4 EEC: Council Directive 91/676/EEC of 12 December 1991 concerning the protection of
5 waters against pollution caused by nitrates from agricultural sources 1991.
- 6 Eidem, J. M., Simpkins, W. W., and Burkart, M. R.: Geology, groundwater flow, and water
7 quality in the Walnut Creek watershed, *Journal of Environmental Quality*, 28, 60-69, 1999.
- 8 Ernstsens, V., Binnerup, S. J., and Sorensen, J.: Reduction of nitrate in clayey subsoils
9 controlled by geochemical and microbial barriers, *Geomicrobiology Journal*, 15, 195-207,
10 1998.
- 11 Gentry, L. E., David, M. B., and McIsaac, G. F.: Variation in Riverine Nitrate Flux and Fall
12 Nitrogen Fertilizer Application in East-Central Illinois, *Journal of Environmental Quality*, 43,
13 1467-1474, 2014.
- 14 Gilliam, J. W., Baker, J. L., and Reddy, K. R.: Water quality effects of drainage in humid
15 regions. In: *Agricultural drainage*, American Society of Agronomy, Crop Science Society of
16 America, Soil Science Society of America, 677 S. Segoe Rd. Madison, WI 53711, 1999.
- 17 Gilliam, J. W., Skaggs, R. W., and Weed, S. B.: Drainage control to diminish nitrate loss from
18 agricultural fields, *Journal of Environmental Quality*, 8, 137-142, 1979.
- 19 Hansen, L. and Pedersen, E. F.: Losses of nutrients by leaching in agricultural plant
20 production, *Tidsskrift for planteavl*, 79, 670-688, 1975.
- 21 Kladviko, E. J., Grochulska, J., Turco, R. F., Van Scoyoc, G. E., and Eigel, J. D.: Pesticide
22 and nitrate transport into subsurface tile drains of different spacings, *Journal of*
23 *Environmental Quality*, 28, 997-1004, 1999.
- 24 Lapen, D. R., Topp, E., Edwards, M., Sabourin, L., Curnoe, W., Gottschall, N., Bolton, R.,
25 Rahman, S., Ball-Coelho, B., Payne, M., Kleywegt, S., and McLaughlin, N.: Effect of liquid
26 municipal biosolid application method on tile and ground water quality, *Journal of*
27 *Environmental Quality*, 37, 925-936, 2008.
- 28 Lindhardt, B., Abildstrup, C., Vosgerau, H., Olsen, P., Torp, S., Iversen, B. S., Jørgensen, J.
29 O., Plauborg, F., Rasmussen, P., and Gravesen, P.: The Danish pesticide leaching assessment
30 programme. Site characterization and monitoring design, GEUS, Copenhagen, 2001.
- 31 Lucey, K. J. and Goolsby, D. A.: Effects of climatic variations over 11 years on nitrate-
32 nitrogen concentrations in the Raccoon river, Iowa, *Journal of Environmental Quality*, 22, 38-
33 46, 1993.
- 34 Mulla, D. J. and Strock, J. S.: Nitrogen transport processes in soil. In: *Nitrogen in agricultural*
35 *systems*, American Society of Agronomy, crop Sciences of America, Soil Society of America,
36 677 S. Segoe Rd., Madison, WI 53711, USA, 2008.
- 37 Nangia, V., Gowda, P. H., Mulla, D. J., and Sands, G. R.: Modeling Impacts of Tile Drain
38 Spacing and Depth on Nitrate-Nitrogen Losses, *Vadose Zone Journal*, 9, 61-72, 2010.
- 39 Olesen, S. E.: Kortlægning af potentielt dræningsbehov på landbrugsarealer opdelt efter
40 landskabselement, geologi, jordklasse, geologisk region samt høj/lavbund, Det
41 jordbrugsvidenskabelig faktultet, DJF, 2009.

- 1 Pabich, W. J., Valiela, I., and Hemond, H. F.: Relationship between DOC concentration and
2 vadose zone thickness and depth below water table in groundwater of Cape Cod, USA,
3 *Biogeochemistry*, 55, 247-268, 2001.
- 4 Pedersen, E. F.: Losses of nitrogen through drainage water 1971-81 (in Danish),
5 *Landbrugscentret, Statens forsøgsstation Højer*, 4 pp., 1983.
- 6 Premrov, A., Coxon, C. E., Hackett, R., Kirwan, L., and Richards, K. G.: Effects of over-
7 winter green cover on soil solution nitrate concentrations beneath tillage land, *Science of the*
8 *Total Environment*, 470, 967-974, 2014.
- 9 Randall, G. W., Delgado, J. A., and Schepers, J. S.: Nitrogen Management to Protect Water
10 Resources. In: *Nitrogen in Agricultural Systems*, Raun, W. R., Schepers, J. S., Follett, R. F.,
11 Fox, R. H., and Randall, G. W. (Eds.), *American Society of Agronomy, Crop Sciences of*
12 *America, Soil Society of America*
13 *Madison, WI 53711, USA, Agronomy Monograph 49*, 911-946, 2008.
- 14 Robinson, M. and Rycroft, D. W.: The impact of drainage on streamflow. In: *Agricultural*
15 *drainage American Society of Agronomy, Crop Sciences of America, Soil Society of America,*
16 *Madison, WI 53711, USA*, 1999.
- 17 Rosenbom, A. E., Olsen, P., Plauborg, F., Grant, R., Juhler, R. K., Brusck, W., and Kjaer, J.:
18 Pesticide leaching through sandy and loamy fields - Long-term lessons learnt from the Danish
19 Pesticide Leaching Assessment Programme, *Environmental Pollution*, 201, 75-90, 2015.
- 20 Rozemeijer, J. C., van der Velde, Y., van Geer, F. C., Bierkens, M. F. P., and Broers, H. P.:
21 Direct measurements of the tile drain and groundwater flow route contributions to surface
22 water contamination: From field-scale concentration patterns in groundwater to catchment-
23 scale surface water quality, *Environmental Pollution*, 158, 3571-3579, 2010.
- 24 Schjonning, P., Lamande, M., Berisso, F. E., Simojoki, A., Alakukku, L., and Andreasen, R.
25 R.: Gas Diffusion, Non-Darcy Air Permeability, and Computed Tomography Images of a
26 Clay Subsoil Affected by Compaction, *Soil Science Society of America Journal*, 77, 1977-
27 1990, 2013.
- 28 Simmelsgaard, S. E.: The effect of crop, N-level, soil type and drainage on nitrate leaching
29 from Danish soil, *Soil Use and Management*, 14, 30-36, 1998.
- 30 Simmelsgaard, S. E. and Djurhuus, J.: An empirical model for estimating nitrate leaching as
31 affected by crop type and the long-term N fertilizer rate, *Soil Use and Management*, 14, 37-
32 43, 1998.
- 33 *The Commission on Nature and Agriculture: Richer nature, new environmental regulation*
34 *and new growth opportunities for agriculture. www.naturoglandbrug.dk, 2013.*
- 35 Tiemeyer, B., Kahle, P., and Lennartz, B.: Designing Monitoring Programs for Artificially
36 Drained Catchments, *Vadose Zone Journal*, 9, 14-24, 2010.
- 37 Van Der Ploeg, R. R., Horton, R., and Kirkham, D.: Steady Flow to Drains and Wells. In:
38 *Agricultural Drainage*, Skaggs, R. W. and van Schilfhaarde, J. (Eds.), *Agronomy Monograph,*
39 *American Society of Agronomy, Crop Science Society of America, Soil Science Society of*
40 *America, Madison, WI, USA*, 1999.
- 41 van der Velde, Y., Rozemeijer, J. C., de Rooij, G. H., van Geer, F. C., and Broers, H. P.:
42 Field-Scale Measurements for Separation of Catchment Discharge into Flow Route
43 Contributions, *Vadose Zone Journal*, 9, 25-35, 2010.
- 44

1 **Table 1.** Precipitation (P), evaporation (E), drainage (D), and groundwater discharge (G) for
 2 the agrohydrological year (June-June) for 2001-2012 for the Faardrup, Silstrup and Estrup
 3 fields (partly after Lindhardt *et al.*, 2001).

Field	P	E	D	G	D+G	D/(D+G)	D/P
	mm y ⁻¹					%	
Faardrup	685	459	95	131	226	43	13
Silstrup	943	472	188	283	471	40	20
Estrup	1089	476	421	196	617	68	39

4

5

1 **Table 2.** Key parameters for the three fields according to Lindhardt *et al.* (2001) and
 2 Rosenbom *et al.* (2015).

Field	Faarstrup	Silstrup	Estrup
Size of field (ha)	2.3	1.7	1.3
Slope (%)	1-3	1-2	0-1
Soil type (USDA)	Argiudoll Hapludoll Vermudoll	Argiudoll Hapludoll	Argiudoll Glossudalf
Drainage status	Moderately well drained	Moderately well drained	Moderately well drained
Depth of tile drains (m)	1.1	1.1	1.1
C in Ap (0-0.2 m) (%)	1.4-1.5	1.6-2.0	1.6-3.2
C below Ap (0.2-6 m) (%)	0.06-0.23	0.06-2.1	0.1-50
Clay in Ap (0-0.2 m) (%)	15-16	18-27	10-20
Clay below Ap (0.2-6 m) (%)	16-37	18-58	1-65
Depth to calcareous zone (m)	1.5	1.1	1-4
CaCO ₃ (%) (0-6 m)	0-21	0-46	0-82
Age of sediments	Late Weichselian glaciation	Late Weichselian glaciation	Saalian glaciation
Landscape	Till plain	Till plain	Till plain
Geology	Homogenous	Dislocated structure	Complex structure

3

4

1 **Table 3.** Annual average of minimum, mean, and maximum air temperatures for 2001-2011
 2 at Faardrup, Silstrup and Estrup.

Temperature	Faardrup	Silstrup	Estrup
Average minimum air temperature (°C)	5.6	6.0	5.8
Minimum air temperature (°C)	-19.5	-14.5	-15.7
Average maximum air temperature (°C)	12.0	11.4	12.2
Maximum air temperature (°C)	31.3	30.4	32.1
Average mean air temperature (°C)	8.8	8.7	9.0

3

1 **Table 4.** Crops and winter cover crops (in bold), crop rotation, types of N-source (F:
2 inorganic fertilisers; C: cattle manure, S: sow manure and P: pig manure), and the amount of
3 N fertilisers (kg N ha⁻¹yr⁻¹) applied in 2001-2012 at Faardrup, Silstrup and Estrup.

Year	Faardrup			Silstrup			Estrup		
	Crop	Source	Dose kg N ha ⁻¹ yr ⁻¹	Crop	Source	Dose kg N ha ⁻¹ yr ⁻¹	Crop	Source	Dose kg N ha ⁻¹ yr ⁻¹
2001	Sugar beet	F	110	Spring barley	F	118	Peas Winter wheat	-	0
2002	Spring barley Winter rape	F	125	Maize	F,C	163	Winter wheat	F	147
2003	Winter rape Winter wheat	F	145	Peas Winter wheat	-	0	Fodder beet	C	169
2004	Winter wheat	F	154	Winter wheat	F	170	Spring barley	F	105
2005	Maize	F	129	Spring barley Winter rape	F, P	167	Maize	F, S	164
2006	Spring barley Winter rape	F	130	Winter rape Winter wheat	F, P	96	Spring barley Winter wheat	F	112
2007	Winter rape Winter wheat	F	151	Winter wheat	F	162	Winter wheat Winter wheat	F	178
2008	Winter wheat	F	156	Fodder beet	F	244	Winter wheat	F	180
2009	Sugar beet	F	110	Spring barley Red fescue	F, P	223	Spring barley Winter wheat	P, S	167
2010	Spring barley Red fescue	F	179	Red fescue	F	58	Winter rape Winter wheat	F	181
2011	Red fescue	F	104	Red fescue	F, P	123	Winter wheat	F, S	160
Total			1493			1524			1563
Yearly average			136			139			142

4

5

1 **Table 5.** Minimum (min.), maximum (max.) and average (avg.) daily drainage, average
 2 annual number of days with drainage, average air temperatures during drainage, and
 3 cumulated drainage, all 2001-2012 at Faardrup, Silstrup and Estrup.

Field	Drainage				Average air temperature (°C)				Drainage
	min.	max.	avg.	avg.	<5	≥5	>10	>15	2001-2011
	mm d ⁻¹			days yr ⁻¹	% of cumulated drainage				mm
Faardrup	0.1	14.9	0.26	88	51	49	16	3.3	961
Silstrup	0.1	27.8	0.50	86	44	56	12	0.3	2304
Estrup	0.1	57.8	1.16	243	42	58	22	5.4	4921

4

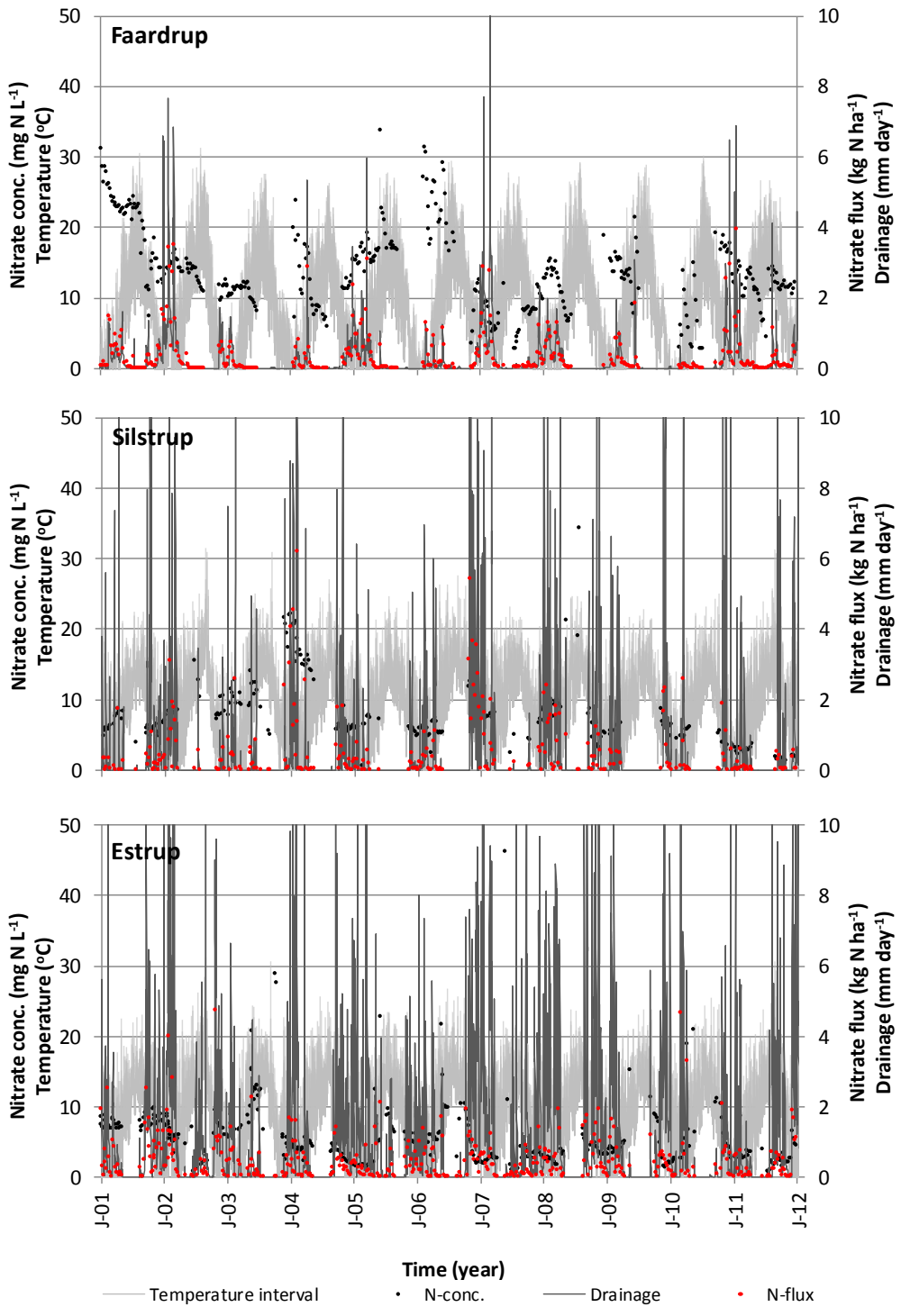
5



1

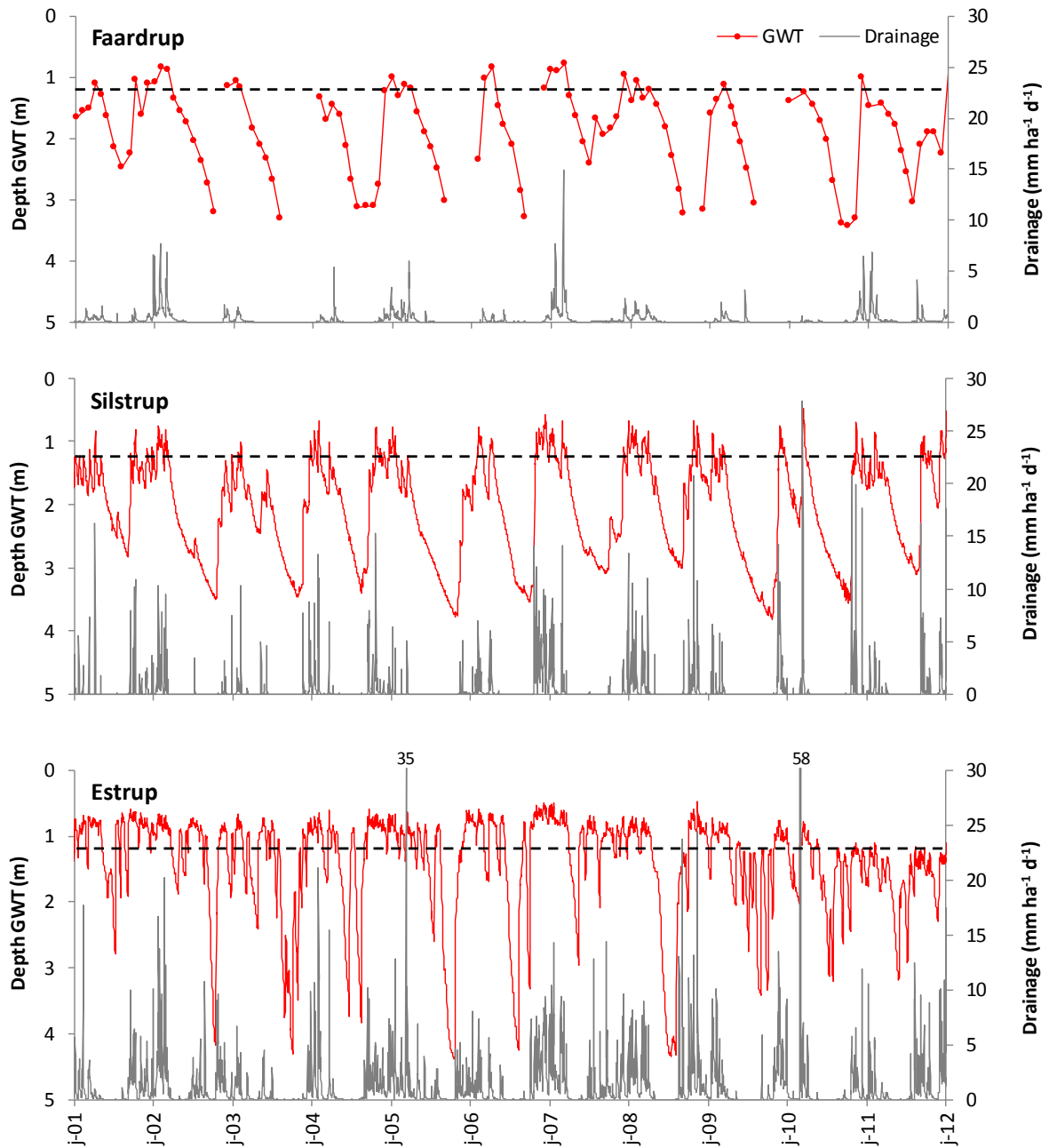
2 **Figure 1.** Map of Denmark showing the three clayey till fields: Faardrup, Silstrup and Estrup
3 (Lindhardt *et al.*, 2001).

4



1
2
3
4
5
6

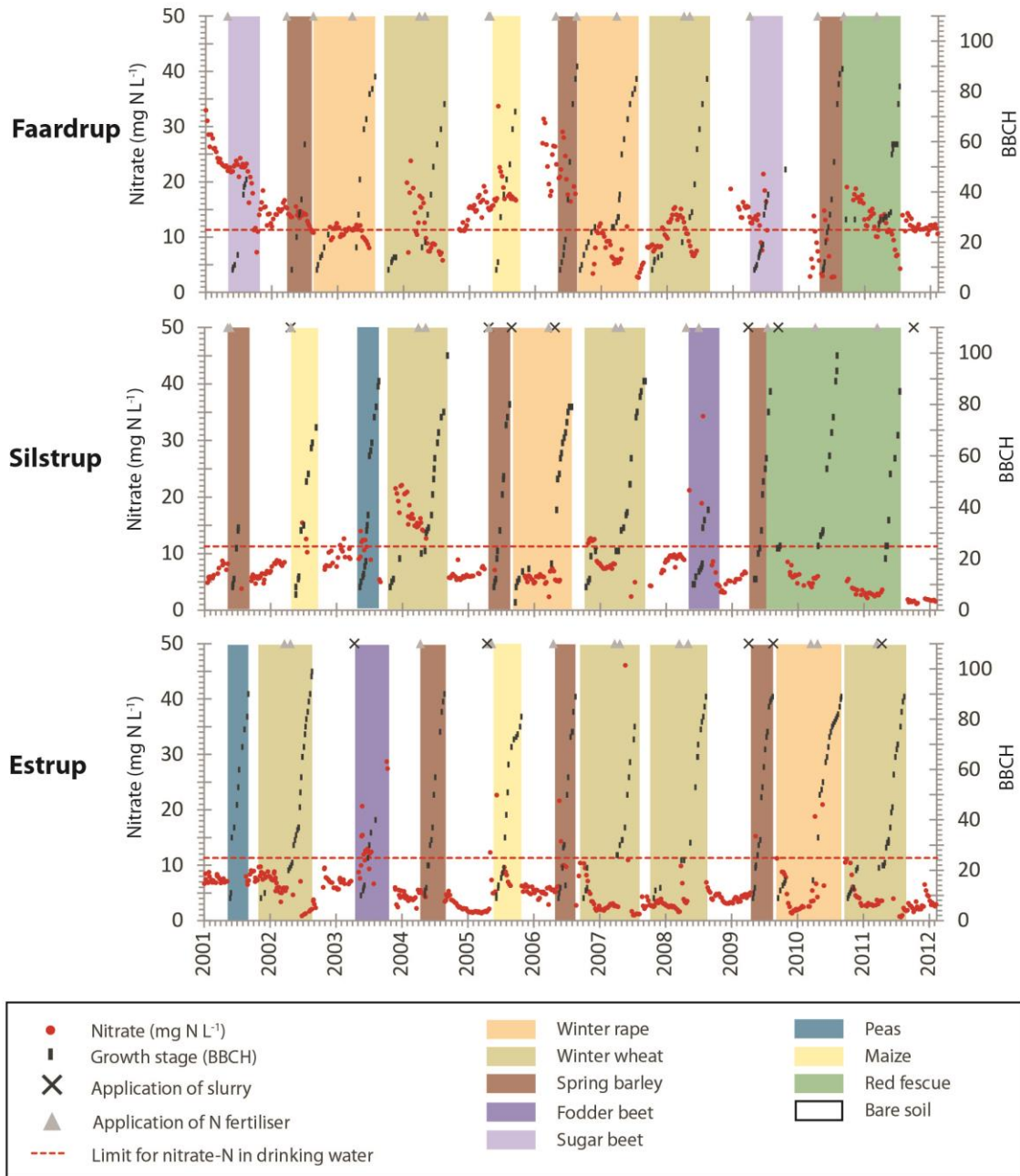
Figure 2. Concentration of nitrate-N, nitrate-N fluxes, drainage and the daily minimum-maximum temperature span for temperatures above zero degrees Celsius for 2001-2012 at Faardrup, Silstrup and Estrup.



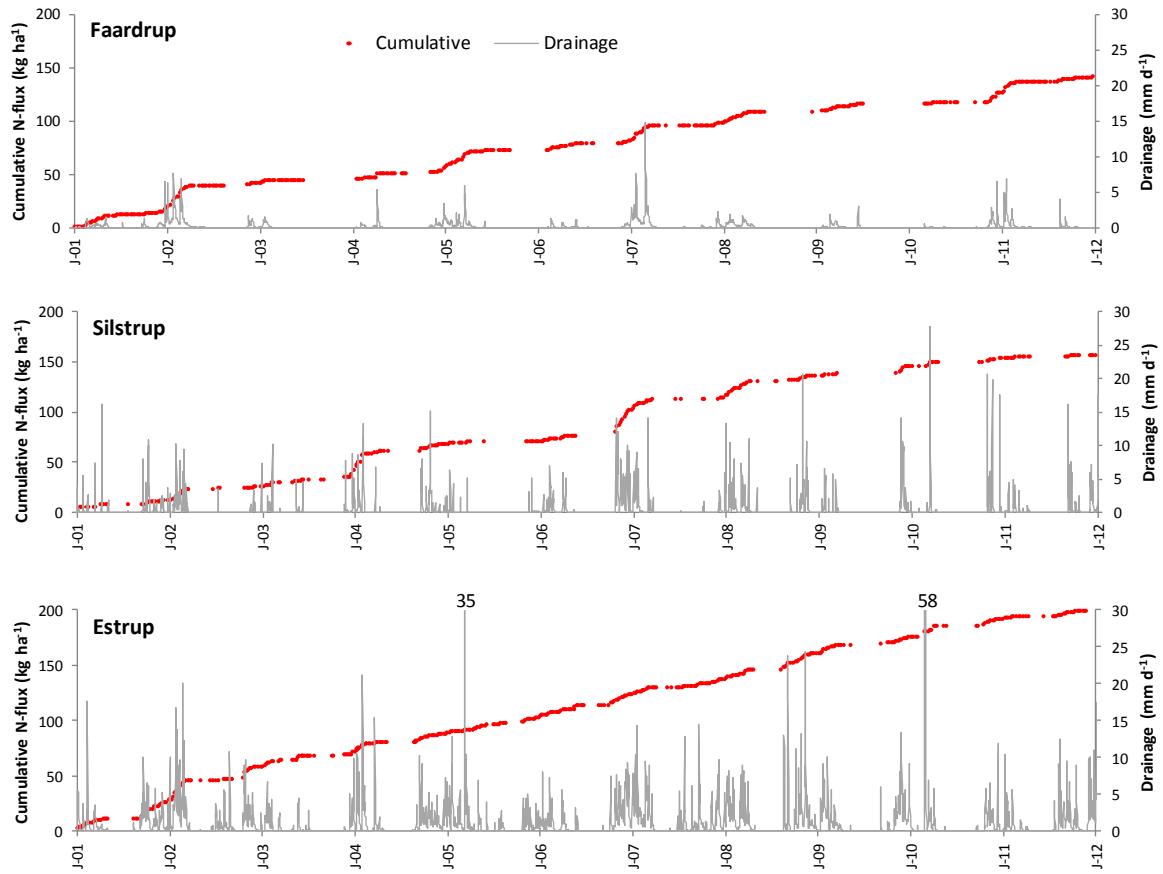
1

2 **Figure 3.** Drainage and depth to groundwater table (GWT) in 2001-2012 at Faardrup, Silstrup
 3 and Estrup. The black dashed lines indicate tile drain depth.

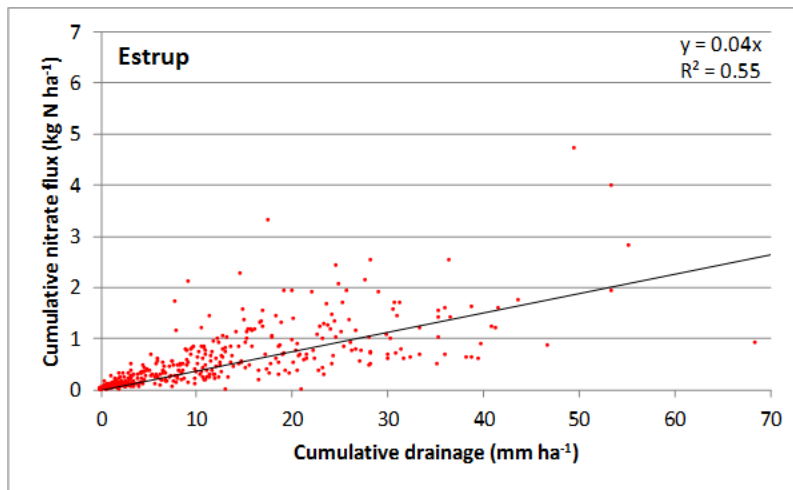
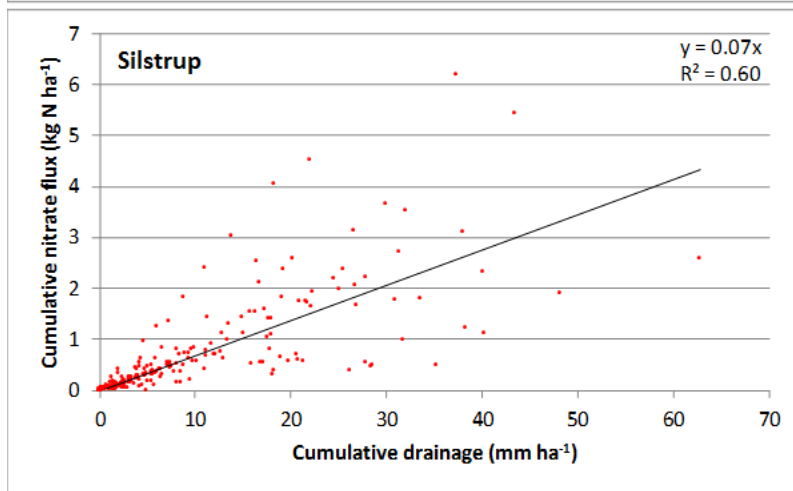
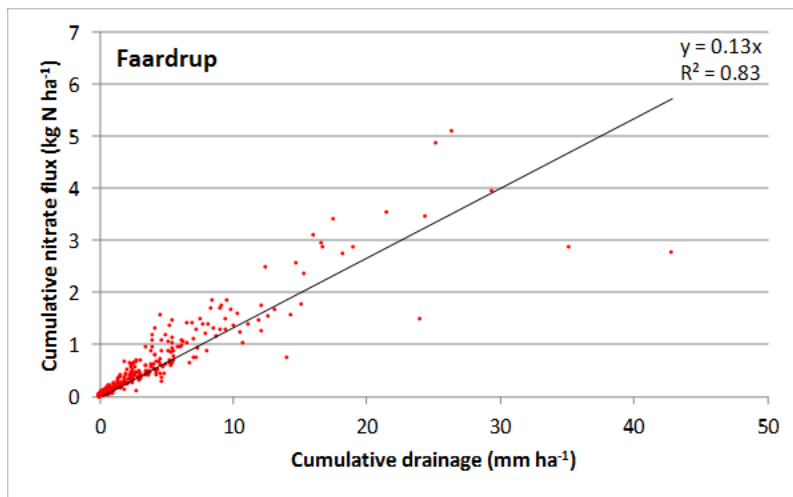
4



1
 2 **Figure 4.** Crop type, specific growth stage of crops according to the BBCH scale, application
 3 of inorganic N fertiliser and injection of slurry and concentration of nitrate-N (mg N L⁻¹) in
 4 drainage at Faardrup, Silstrup and Estrup.
 5



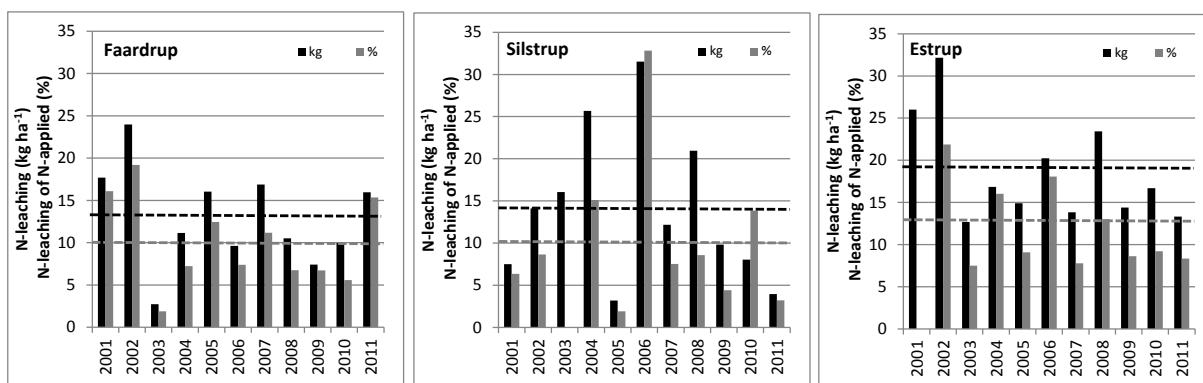
1
 2 **Figure 5.** Cumulative nitrate-N flux and drainage for 2001-2012 at Faardrup, Silstrup and
 3 Estrup.
 4



1

2 **Figure 6.** Nitrate-N flux per cumulated drainage for each sampling period at Faardrup,
3 Silstrup and Estrup.

4



1
 2 **Figure 7.** Nitrate-N in drainage in mass (kg N ha^{-1}) and of applied N (%) (inorganic N
 3 fertilisers plus slurry) for the years 2001 to 2011 at Faardrup, Silstrup and Estrup. The black
 4 dashed line indicates the average annual N-leaching in 2001-2012 and the grey dashed line is
 5 the average nitrate-N leaching of applied N in 2001-2012.