

Response to reviewer

Journal: HESS

Title: Influence of environmental factors on spectral characteristic of chromophoric dissolved organic matter (CDOM) in Inner Mongolia Plateau, China

Author(s): Z. D. Wen et al.

MS No.: hess-2015-126

MS Type: Research article

Reviewer#3

Comment 1: The authors have responded in much detail to the concerns from previous reviewers. Some paragraphs could still profit from a grammar check. I do indicate some of the respective sections in my detailed comments below. However, I consider the scientific content to be accessible to the reader and do find the presentation of the work clear and concise. Also, and as indicated earlier, I consider the presentation of the detailed optical measurements on surface waters from this region to be valuable. As stressed by the authors, the variability patterns presented do contrast variability patterns from other regions.

Response 1: We thank the reviewer for the good comment. As you point out that some paragraphs of the paper are still have some troubles in the grammar, we have checked and revised them (for example, Page 2, Line 17, 19, 22, 27, 32; Page 3, Line 2, 24, 10; Page 4, Line 13-14). In addition, we have rewritten some part in order to highlight the purpose and scientific significance of the study (Page 2, Line 4-7). Some detailed optical measurements on surface waters, eg. CDOM light absorption and particles light absorption, were presented in Page 7, Line 16 - Page 9, Line 4.

The contrast of variability patterns from other regions were presented in the manuscript, such as Page 17, Line 2-11; Page 18, Line 6-30, et. al.

Comment 2 Detailed comments:

Response 2: We thank the reviewer for the patient and careful suggestions for revision. And we are very sorry for the above improper word and ambiguous expression. We have adopted your suggestions and rewritten the sentences, the related revisions were listed in the manuscript, and the page information is listed after the comments.

p.2 l.4-7 The last sentence of your abstract is very vague. Consider to revise and to replace the word "might": the word's connotation reminds of a hopeful guess. (Page 2, Line 4-7)

p.2 l.19 replace "has" with "is" (Page 2, Line 19)

p.4 l 22-24 Check entire sentence for English, I suggest "... altered CDOM properties, when compared to .." (Page 4, Line 23-24)

p.4 l25 "storage levels" not "storages levels" (Page 4, Line 25)

p. 4 l28 Point (1), you probably mean "within" not "with the plain". (Page 4, Line 29,

1 33)

2 p.4 128 – p.5 14 Check entire paragraph for English grammar, and I would replace

3 “propose the following issues” with “addressed the following issues”. (Page 4, Line

4 28- Page 5, Line 5)

5 P 5-12 Methods and Results: concise and well written; Thank you for the positive

6 comment.

7 p.5 29 I do not think that many readers are used to the unit “hours sunshine per year”.

8 Alternatively, you could state how many days per year there were hours (one or more)

9 with direct sunlight (blue sky). That would be XX days of sun per year. – It is rough

10 (like your 3,000 h probably are too), but more assessable to the reader. (Page 5, Line

11 29- Page 6, Line 2)

12 p. 15 122-25 I do not follow your calculations: “fg C”, do you really mean “femto

13 gram”? That would be 10 to the power of minus 15? This does not make any sense to

14 me. Do you mean “pg C”, but that would be too high. – Please check carefully and

15 revise. We have checked the unit. We are very sorry for the mistake on the unit, and

16 we have revised it to Tg (Page 15, Line 31-33).

17 P. 21 122-23 The first sentence of the conclusions is hard to understand that is again

18 due to the language. Do you want to stress that the CDOM properties of the plateau

19 lakes were not well studied prior to your work? – Please consider to revise this

20 sentence. (Page 21, Line 28-29)

21 Fig 1 The plots are blurry: please see that they will be submitted as line graphs and

22 sharp. Also, the different landcover types listed in the legend of Fig 1a are by far not

23 all visible on the map. If applicable, please reduce legend to what is truly visible on

24 the map.

25 We have redrawn the Fig 1a according to the suggestion, and the relevant illustrations

26 of fig.1 are listed in the supporting material (Page 33, Fig. 1).

27 Fig. 1b write “cities” not “cyties” (Page 33, Fig. 1b)

28 Fig 4 Nice figure! - It is very informative. Thank you for the positive comment.

29

List of all relevant changes made in the manuscript

1. We have checked and revised some troubles in the grammar (for example, Page 2, Line 17, 19, 22, 27, 32; Page 3, Line 2, 24, 10; Page 4, Line 13-14). We have adopted reviewer's suggestions and rewritten some sentences, the related revisions were listed in the manuscript., such as Page 2, Line 4-7; Page 2, Line 19; Page 4, Line 23-24; Page 4, Line 25; Page 4, Line 29, 33; Page 4, Line 28- Page 5, Line 5;Page 5, Line 29- Page 6, Line 2, et. al.

2. We have rewritten some part in order to highlight the purpose and scientific significance of the study (Page 2, Line 4-7).

3. Some detailed optical measurements on surface waters, eg. CDOM light absorption and particles light absorption, were presented in Page 7, Line 16 - Page 9, Line 4.

4. We have redrawn the Fig 1 according to the suggestion, and the relevant illustrations of fig.1 are listed in the supporting material (Page 33, Fig. 1).

Influence of environmental factors on spectral characteristic of chromophoric dissolved organic matter (CDOM) in Inner Mongolia Plateau, China

Z. D. Wen¹, K. S. Song^{1*}, Y. Zhao¹, J. Du¹, J. H. Ma^{1,2}

[1]{Northeast Institute of Geography and Agroecology, CAS, Changchun, China}

[2]{University of Chinese Academy of Sciences, Beijing, China}

Correspondence to: K. S. Song (songks@neigae.ac.cn)

Abstract

Spectral characteristics of chromophoric dissolved organic matter (CDOM) were examined in conjunction with environmental factors in the waters of rivers and terminal lakes in Hulun Buir plateau, northeast China. Dissolved organic carbon (DOC), total nitrogen (TN), and total phosphorous (TP) were significantly higher in terminal lakes than rivers waters ($p < 0.01$). Principal component analysis (PCA) indicated that non- water light absorption and anthropogenic nutrient disturbances might be the causes of the diversity of water quality parameters in Hulun Buir plateau. CDOM absorption in river waters was significantly lower than terminal lakes ($p < 0.01$). Analysis of ratio of absorption at 250 to 365 nm ($E_{250:365}$), specific UV absorbance ($SUVA_{254}$), and spectral slope ratio (S_r) indicated that CDOM in river waters had higher aromaticity, molecular weight, and vascular plant contribution than in terminal lakes. Furthermore, results showed that DOC concentration, CDOM light absorption, and the proportion of autochthonous sources of CDOM in plateau waters were all higher than in other freshwater rivers reported in the literature. The strong evapoconcentration, intense ultraviolet irradiance and landscape features of Hulun Buir plateau may be responsible for the above phenomenon. Redundancy analysis (RDA) indicated that the environmental variables total suspended matter (TSM), TN, and electrical conductivity (EC) had a strong correlation with light absorption characteristics, followed by TDS and chlorophyll a. In most sampling locations, CDOM was the dominant non- water light-absorbing substance. Light absorption by

non-algal particles often exceeded that by phytoplankton in the plateau waters. Study of these optical-physicochemical correlations is helpful in the evaluation of the potential influence of water quality factors on non-water light absorption in cold plateau water environments. The construction of correlation between DOC concentration and water quality factors (eg. alkalinity, EC, TN, and TP) in plateau region is benefit to the derivation of DOC concentration via water quality information, which will contribute to carbon storage estimation in water environment.

1 Introduction

Chromophoric dissolved organic matter (CDOM) is the colored component of dissolved organic matter (DOM) in the natural waters environment. CDOM is principally contributed by terrestrial inputs and river discharge in coastal waters. Phytoplankton excretion, zooplankton and bacterial metabolism are the major CDOM sources in aquatic ecosystems (Coble, 2007). As an important constituent of DOM, which is the largest reservoir of organic carbon on Earth, CDOM plays a vital role in the global carbon cycle (Gonnelli et al., 2013; Mopper & Kieber, 2002). CDOM is one of the major light absorbing constituents in natural waters, it can absorb solar radiation in the UV and visible ranges of the light spectrum to shield biota from harmful UV radiation. As a consequence of its optical behavior, CDOM is also largely responsible for the bio-optical properties of natural water, and has a potential effect on the productivity of the water column (Organelli et al., 2014). The absorption characteristic of CDOM also influences the inversion accuracy of remote sensing of chlorophyll a (*Chl a*) and other suspended solids (Siegel et al., 2005; Song et al., 2014).

Spectral analysis of CDOM (absorption and fluorescence) has been used to trace its origin and chemical composition (Stedmon et al., 2000; Vodacek et al., 1997; Xie et al., 2014). Understanding the spectral characteristics of CDOM could help to understand DOM cycling in aquatic ecosystem. According to previous studies, the light absorption of CDOM often decreases in a near-exponential manner with increasing optical wavelength (Coble, 2007; Zhang et al., 2010). In order to characterize the properties of CDOM from absorption spectra, several spectral indices have been developed. The ratio of absorption at 250 to 365nm ($E_{250:365}$) is used to

1 track changes in the size of DOM molecules (De Haan & De Boer, 1987); specific UV
2 absorbance ($SUVA_{254}$) **is** found to have strong correlation with DOM aromaticity as
3 measured by ^{13}C NMR spectroscopy (Weishaar et al., 2003); Two optical parameters,
4 the absorption **coefficient** at specific wavelengths λ nm ($a_{CDOM\lambda}$) and CDOM spectral
5 slopes (S), are universally recognized proxies of CDOM concentration and molecular
6 origin (Helms et al., 2008). Furthermore, S may also correlate with the ratio of fulvic
7 acid (FA) to humic acid (HA). In fact, the use of S is dependent on the calculated
8 wavelength intervals, and the ratio of the slope (S_r), as a dimensionless parameter,
9 could avoid the limitations of spectral wavelength measurements (Helms et al., 2008;
10 Spencer et al., 2012). The analysis of these spectral indices **is** useful for understanding
11 spatial and temporal CDOM variations in the aquatic environment.

12 Recent studies have proven that CDOM in aquatic ecosystems exerts an impact
13 on ecosystem productivity, optical properties of water, and biochemical processes
14 (Zhang et al., 2007). However, regional CDOM characteristics are still not thoroughly
15 understood in diverse aquatic environments because of various physico-chemical
16 parameters of water (Findlay & Sinsabaugh, 2003). Many water quality parameters
17 have been proposed to affect the temporal and spatial variation of CDOM, and some
18 correlations among them have been established; a significant positive correlation was
19 found between dissolved organic carbon (DOC) and CDOM absorption coefficients,
20 and a series of different models were established based on this correlation in Lake
21 Taihu (Zhang et al., 2007), the Yangtze River (Zhang et al., 2005), and the Georgia
22 river in the USA (Yacobi et al., 2003). CDOM strongly absorbs in the blue spectral
23 region, which interferes with the determination of *Chla* concentration by remote
24 image sensing (Siegel et al., 2005), therefore the relationship between the spectral
25 characteristics of CDOM with *Chla* concentration has received widespread attention.
26 A significant linear relationship between $a_{CDOM(300)}$ and ***Chla*** concentrations was
27 identified in the central eastern Mediterranean Basin (Bracchini et al., 2010), the
28 Atlantic Ocean (Kitidis et al., 2006), and the Baltic Sea (Kowalczyk et al., 2006), but
29 $a_{CDOM(440)}$ was loosely related to pigment concentrations in the 0- 400 m depth layer
30 of NW Mediterranean Sea (Organelli et al., 2014). Furthermore, the relationship
31 between $a_{CDOM(\lambda)}$ and other physico-chemical parameters of water, such as total
32 nitrogen (TN), total phosphorous (TP), salinity, and extracellular enzyme activities
33 (Gonnelli et al., 2013; Kowalczyk et al., 2006; Niu et al., 2014; Phong et al., 2014),

1 were all investigated in different aquatic environments. However, these studies
2 reached different conclusions due to regional variations in water quality.

3 Studies published to date have focused on the relationship between CDOM
4 properties and environmental factors; results indicate that salinity, solar radiation, and
5 watershed characteristics all have important effects on CDOM optical properties
6 (Graeber et al., 2012; Gueguen et al., 2011; Mavi et al., 2012; Song et al., 2013b). The
7 properties of CDOM in plateau water at high altitude have attracted interest due to the
8 unique natural environmental and climatic features of these waters. The DOM
9 composition in two Tibetan alpine lakes showed a limited terrigenous DOM and
10 exhibited a high biolability of DOC (Spencer et al., 2014). The analysis of CDOM
11 parameters in three intermontane plateau rivers in western U.S. indicated that
12 autochthonous DOM or DOM derived from anthropogenic sources dominated the
13 DOM pool (Spencer et al., 2012). However, the relationship between CDOM and
14 environmental factors in plateaus area has been less well studied. Analysis of these
15 optical-physicochemical correlations is critical for understanding the source and
16 distribution of CDOM in plateau water environments and evaluating the potential
17 influence of water quality factors on non-water light absorption.

18 Inner Mongolia Plateau in China is located in an arid and cold climate zone with
19 sparse annual rainfall. The plateau is covered with numerous lakes surrounded by vast
20 grasslands and forest. These lakes are located far away from the ocean and are
21 supplied with water by precipitation and river runoff, and most of them are
22 noncontributing lakes (Tao et al., 2015). The unique geographical environment and
23 climatic factor in arid and cold plateau regions altered CDOM properties, when
24 compared with the bulk of inland water. Moreover, over 80% of the lakes are saline,
25 which allows higher carbon storage levels than fresh water lakes (Duarte et al., 2008;
26 Song et al., 2013b). The plateau lakes therefore play an important role in global
27 carbon balance estimation.

28 Based on the above studies, we address the following issues: (1) Whether
29 CDOM properties in cold plateau region differ within the plains or not? And is this
30 difference related to water quality of terminal lakes? (2) Under the unique climatic
31 and hydrological conditions of boreal plateau, which is the main non-water light
32 absorption component in water? And is this absorption pattern a stable state?" We
33 expect that the information obtained in this study can answer all these questions.

1 These answers can enhance our understanding of the non-water light absorption
2 characteristics of inland waters in arid and cold plateau region. The results of CDOM
3 source and constitute analysis are also helpful to carbon storage estimation in plateau
4 waters. The optical-physicochemical correlation analysis could contribute to improve
5 the understanding and interpretation of satellite remote sensing imagery in this area.

7 2 Material and methods

8 2.1 Study sites

9 Inner Mongolia Autonomous Region is located in the north of China with an area of
10 about 1.18 million km² (37°24'- 53°23' N, 97°12'- 126°04' E). The average altitude of
11 the whole region is over 1000 m, and it is basically a plateau landform composed of
12 Hulun Buir, XilinGol, Ulanqab, Bayannur, Alxa, and Erdos plateaus. Rivers, lakes,
13 reservoirs and other surface water areas account for 0.8% of the whole area. All the
14 collected water samples were taken from Hulun Buir Plateau (Fig. 1). Hulun Buir
15 plateau is located in the northeast of Inner Mongolia plateau with the topography of
16 high in the east and low in the west. The east side of the plateau is connected to
17 Daxing'anling mountains, and the geology composition is mainly the Paleozoic
18 granite, the Mesozoic andesite, quartz trachyte, and tuff. Most of the overlying rock
19 has weathered away into loess. The central regions are undulating rolling plains, and
20 are made up of the loose river and lacustrine sedimentary sand. The western regions
21 are mainly low hilly composed by volcanics. The physico-geographic zone of whole
22 Hulun Buir plateau is divided into chernozem zone with forest and steppe and
23 chestnut earth zone with steppe. This plateau is characterized by a typical semi-humid
24 and semi-arid continental monsoon climate with intensive solar radiation throughout
25 the year. Hulun Buir Plateau has distinct seasons with a dry spring, a hot and rainless
26 summer, a windy and short autumn, and a cold dry winter (Zheng et al., 2015). Based
27 on long-term meteorological data (1961-2010), the average annual temperature is
28 0.8 °C. The average annual wind speed is 3.5 m/s. The average annual rainfall is
29 273.9 mm, 70%- 80% of which falls in May- August (Bai et al., 2008). There has over

three-quarters days of each year with direct sunlight. In this area, the average sunlight per day is over 8.2 h. The average annual evaporation is 1615.3 mm, which is far greater than precipitation, resulting in water scarcity. The soils of the area are Mollisols, and the topography consists of gently rolling hills and tablelands.

The plateau is dotted with numerous lakes surrounded by vast grasslands and forests, and the two largest freshwater lakes (Hulun Lake and Buir Lake) of Inner Mongolia are located in this area. Most lakes in this area are inland stagnant lakes filled with terminal lakes due to the particular climate and geographic location. Several rivers flow through Hulun Buir Plateau, including the Kerulen, Ergun, Wuexun, Hailar, and Zhadun Rivers. Wuexun River originates from Buir Lake's northern shore, flows north and empties into Hulun Lake. Kerulen River flows east through Hulun Lake, and finally into the Ergun River. The Zhadun River flows into the Hailar River, flowing north to join the Ergun River. A total of 46 surface waters were collected in this study with respect to both watershed characteristics and lake size. Based on the salinity and EC (salinity threshold value = 0.5 PSU, EC threshold value = 1000 ms/cm), these waters were divided to 22 river waters and 24 saline waters. Particularly, the saline waters were collected from lakes without outflow or the terminal-flow of rivers. Hulun Lake and Buir Lake are connected with rivers, so the water samples collected from these lakes are classified as river water samples in the subsequent analysis in this study. The surface water (0.5-1 m) was collected to sample bottle at least 4 L in every sampling point, and kept in a portable refrigerator before they were carried back to laboratory.

2.2 Water Sampling and water quality measurement

Water samples were taken from 46 sampling sites in Hulun Buir Plateau, China, during September 2012 (Fig. 1), and the sample numbers for each water body are listed in Table 1 and marked in Fig. 1. The saline lakes size in this study ranged from 1 km² to 42.5 km², with the average depth of 0.4- 2.8 m. These terminal lakes in this study are terminal-flow areas and some of lakes are temporary waters. The related hydrological data of rivers and freshwater lakes have shown in the Table 2, including

rivers (or freshwater lakes) names, sampling numbers, basin area, width, Length, max
 water depth, elevation. The surface water (0.5-1 m) was collected to sample bottle at
 least 4 L in every sampling point, and kept in a portable refrigerator before they were
 carried back to laboratory. Chemical and physical parameters, e.g., pH, total dissolved
 solid (TDS) and electrical conductivity (EC) were determined in sampling situ by a
 portable multi-parameter water quality analyzer (YSI6600, U.S). Concentrations of
 DOC, TN, and TP were measured with unfiltered water samples by a standard
 procedure (APHA et al., 1998). Total suspended matter (TSM) was determined by
 gravimetric analysis (Song et al., 2013a). Water turbidity (Turb) was determined by
 a UV spectrophotometer in 680 nm (Shangfen, 7230) with Milli-Q water as reference
 at room temperature ($20 \pm 2^\circ\text{C}$). Chlorophyll-a (*Chla*) was extracted from water
 samples by 90% buffered acetone solution, and the concentrations were determined
 with a UV spectrophotometer (Shimadzu, UV-2600PC) by the method detailed in
 Song et al. (2013a).

2.3 Non- water light absorption analysis

CDOM was extracted from the collected water samples by filtering through a $0.7\ \mu\text{m}$
 glass fiber membrane (Whatman, GF/F 1825-047) and then was further filtered
 through $0.22\ \mu\text{m}$ polycarbonate membrane (Whatman, 110606). The filtering process
 was finished within two days in dim light in order to avoid alteration by microbial
 activity. Filtered samples were kept refrigerated and warmed at room temperature at
 the time of the analysis. CDOM absorption was analyzed within 12 h using UV-2600
 spectrophotometer equipped with 1-cm quartz cuvette. Absorbance scans were
 performed from 200 to 800 nm, and Milli-Q water was used as reference. Between
 each sample, the quartz cuvette was flushed with Milli-Q water, and the cleanliness
 was checked according to the optical density of reference water. The bubbles should
 be avoided during the measurement. In order to eliminate the internal backscattering,
 the absorbance at 700 nm was used to correct absorption coefficients (Bricaud et al.,
 1981). The absorption coefficient (a_{CDOM}) was calculated from the measured water
 optical density (OD) following the Eq. (1).

$$a_{\text{CDOM}}(\lambda') = 2.303 \times OD_{\lambda} / L \quad (1)$$

Where L is the cuvette path length (0.01 m) and 2.303 is the conversion factor.

OD_{λ} is the average optical density. The absorption coefficients at wavelengths 335 nm ($a_{CDOM335}$) and 440 nm ($a_{CDOM440}$) were selected to express the CDOM concentration (Miller, 1998). CDOM absorption ratio ($E_{250:365}$) was calculated using absorbance at 250 nm and 365 nm. $SUVA_{254}$ values were calculated by dividing the UV absorbance at 254 nm by the DOC concentration ($mg\ L^{-1}$) (Weishaar et al., 2003).

CDOM spectral slopes ($S_{275-295}$ and $S_{350-400}$) between wavelengths 275-295 nm and 350- 400 nm were both calculated using a nonlinear fit of an exponential function to the absorption spectrum according to the Eq. (2) by Origin 8.0 software (Bricaud et al., 1981; Jerlov, 1968).

$$a_{CDOM}(\lambda) = a_{CDOM}(\lambda_0) \times e^{S(\lambda_0 - \lambda)} \quad (2)$$

Where $a_{CDOM}(\lambda)$ is the CDOM absorption at a given wavelength, and $a_{CDOM}(\lambda_0)$ is the absorption at a reference wavelength (440 nm). The spectral slope ratio (S_r) was calculated as the ratio of $S_{275-295}$ to $S_{350-400}$.

Particulate absorption was determined by quantitative membrane filter technique (QFT) (Cleveland & Weidemann, 1993). A certain volume of water was filtered through 0.7 μm glass fiber membrane (Whatman, GF/F 1825- 047), and the filter membrane was subsequently stored in laboratory at $-80^{\circ}C$ until analysis. The light absorption of total particulate trapped on the filter membrane was determined by UV spectrophotometry (Shimadzu, 2660) from 280 to 800 nm with virgin wet membrane as reference. After correction of the path length with path length amplification factor (β), the measured optical densities were transformed into total particulate absorption coefficients according to the Eq. (3) (Bricaud & Stramski, 1990).

$$a_{PB}(\lambda) = 2.303 \times \frac{S}{V} \times OD_s(\lambda) \quad (3)$$

Where $a_{PB}(\lambda)$ is the total particulate absorption at a given wavelength (nm), S is the effective area of the deposited particle on the fiber membrane (m^2), and V is the volume of the filtered water (m^3). OD_{λ} is the optical density at the given wavelength (nm).

The above fiber membranes loaded with total particulate were soaked in the sodium hypochlorite solution in order to remove the pigments, and the light

absorption coefficient of non-algal particles ($a_{NAP}(\lambda)$) was determined and calculated as the $a_{PB}(\lambda)$. The phytoplankton light absorption coefficient ($a_{phy}(\lambda)$) was the difference between $a_{PB}(\lambda)$ and $a_{NAP}(\lambda)$ according to the Eq. (4).

$$a_{phy}(\lambda) = a_{PB}(\lambda) - a_{NAP}(\lambda) \quad (4)$$

2.4 Statistical analysis

The contributions of CDOM, phytoplankton, and non-algal particles (NAP) to non-water light absorption at 440 nm were calculated using Origin 8.0 software (Ortega-Retuerta et al., 2010). The variation of water quality parameters in different sampling locations was assessed by principal component analyses (PCA) using CANOCO 4.5 for Windows with centered and standardized variables. Correlations between water quality parameters and light absorption characteristics were determined by Redundancy analysis (RDA) using CANOCO 4.5, light absorption characteristics were defined as species variables, and water quality parameters were selected as explanatory variables. The Pearson Correlation Coefficient (r_p) was calculated using SPSS 5.0. Because the responding variables may exist in the high autocorrelation, they were first screened through Canonical Correspondence Analysis (CCA) using CANOCO 4.5 to remove the variables with an inflation coefficient greater than 20 (Leps and Smilauer, 2003). A Monte Carlo permutation test was conducted with CANOCO 4.5 and indicated that the selected environmental variables were significantly related to light absorption characteristics (499 permutations under the reduced model, $p \leq 0.05$).

3 Results

3.1 Water quality

The collected river and terminal lakes samples exhibited large variations in water quality (Table 1). A significant difference of DOC was also observed between these two water types ($p < 0.001$). The DOC concentration ranged from 8.44 - 39.74 mg L⁻¹ in river waters, and exhibited higher values in the terminal lakes (23.03 - 300.5 mg L⁻¹). Further, the terminal lakes also had higher alkalinity and EC than river waters. We have redone the statistics after log-transformation of the data and normal distribution test. A positive relationship between DOC and alkalinity was established

in Hulun Buir Plateau waters (Fig. 2a, $R^2 = 0.87$). Regression analyses were also conducted, and a linear relationship between EC and DOC was shown based on the collected data (Fig. 2b; $R^2 = 0.72$). The average nutrient concentrations for TN ($1.33 \pm 0.63 \text{ mg L}^{-1}$) and TP ($0.11 \pm 0.04 \text{ mg L}^{-1}$) in river waters were both lower than in terminal lakes, and significant differences were observed for TN ($p < 0.001$) and TP ($p < 0.01$). Strong linear relationships were shown between TN and DOC in Hulun Buir Plateau (Fig. 2c; $R^2 = 0.67$). A positive correlation between DOC and TP was found in surface water in this area (Fig. 2c; $R^2 = 0.66$).

PCA was performed for all the sampling locations with ten water environment variables (Fig. 3A). The first two principal components (PC) of the PCA explained 61.0% of the variability in all the selected variables (PC1, 36.4%; PC2, 24.6%). Relatively high loadings on PC1 were TSM and Turb, whereas DOC and CDOM showed high negative loadings. The second PCA axis revealed gradients of nutrients (TN and TP). These all had positive loadings on PC2. Furthermore, TDS and Chl a showed high negative loadings on PC2. A clear difference was found between river waters and terminal lakes (Fig. 3B). Terminal water samples clustered in close proximity to each other and were distributed on the negative side of PC2 (with the exception of one point) in Fig. 3B, and river waters clustered almost exclusively on the positive side of PC2.

3.2 Spectral characteristics of CDOM

CDOM absorption spectra of the waters collected from Hulun Buir Plateau decreased as the classical near-exponential manner with increasing wavelengths from the ultraviolet to the visible spectral region. This near-exponential CDOM absorption spectra has been observed in many natural waters (Bricaud et al., 1981; Spencer et al., 2009; Xie et al., 2014). The comparative analysis was conducted in two types of sampling waters in the study, and the mean values of $a_{\text{CDOM}(335)}$ and $a_{\text{CDOM}(440)}$ both showed that the terminal lakes exhibited significantly higher CDOM light absorption than river waters (Table 1).

$E_{250:365}$ values in the waters examined ranged from 5.43 to 20.73, and the mean values were 7.80 ± 2.30 , and 8.02 ± 3.48 in the river and terminal lakes respectively. The majority of the SUVA_{254} values in the river waters ranged from 1.09 - 3.56 $\text{L mg C}^{-1} \text{ m}^{-1}$, and the mean SUVA_{254} was clearly higher in river waters ($2.74 \pm 1.08 \text{ L mg C}^{-1} \text{ m}^{-1}$).

1 $\text{C}^{-1} \text{ m}^{-1}$) than the terminal lakes ($1.90 \pm 0.57 \text{ L mg C}^{-1} \text{ m}^{-1}$), and this was significant (p
2 < 0.01). In order to confirm the source and composition of CDOM in different types
3 of waters, the spectral slopes in the 275-295 nm ($S_{275-295}$) and 350-400 nm ($S_{350-400}$)
4 ranges were both calculated as the indicators (Table 1). $S_{275-295}$ values showed a wide
5 variation in the river water samples ranging from 14.80×10^{-3} to $26.79 \times 10^{-3} \text{ nm}^{-1}$
6 (mean = $19.25 \pm 4.05 \times 10^{-3} \text{ nm}^{-1}$), and the majority of river waters in the study
7 exhibited $S_{275-295}$ between $17.11 - 17.82 \times 10^{-3} \text{ nm}^{-1}$. There was not a significant
8 difference when compared with terminal lakes. $S_{350-400}$ values also showed no
9 significant difference between the two types of waters. Furthermore, the mean values
10 of $S_{275-295}$ and $S_{350-400}$ in Hulun Lake were both lower than Buir Lake.

11 **3.3 Light absorption of CDOM and particulates**

12 Detailed knowledge regarding the relative contributions of CDOM, phytoplankton
13 and non-algal particles to the total non-water light absorption are essential in
14 bio-optical and biogeochemical models, and the relative contributions at 440 nm are
15 shown in Fig. 4. There was no obvious difference in the relative contributions of
16 CDOM, phytoplankton and non-algal particles between river waters and terminal
17 lakes ($p > 0.5$). At all the sampling locations, the mean contribution of CDOM to the
18 total non-water light absorption was 52.78% with the range varied from 2.87% to
19 97.23%, and the relative contribution of non-algal particles was on mean 39.84%,
20 ranging from 2.01% up to 97.13%. Phytoplankton absorption played a minor role in
21 total non-water light absorption with the mean 7.61%. In most water samples
22 examined in this study, CDOM was the dominant non-water light-absorbing
23 substance.

24 To assess the distribution of light absorption in the waters of Hulun Buir Plateau,
25 levels of light absorption due to CDOM, phytoplankton and non-algal particles were
26 plotted based on the numbers of sampling locations and their contributions to total
27 light absorption at 440 nm using a Pareto-Lorenz curve (Lorenz, 1905). The relative
28 contributions were arranged from high to low. Subsequently, the cumulative sampling
29 points are represented on the abscissa axis, and the cumulative contributions plotted
30 on the vertical axis. The more the curve deviated from the theoretical perfect evenness
31 line (45° diagonal), the more inhomogenous light contributions were observed (Fig. 5).
32 According to the Pareto principle, the value of vertical axis was in accordance with 20%

1 abscissa axis, being used to interpret the Pareto- Lorenz curves. From the degree of
 2 curve deviation (Fig. 5), it was observed that the light absorption of optically active
 3 substances in Hulun Buir Plateau area presented inhomogenous phenomena. Among
 4 them, CDOM absorption was the most representative relative to other non-water
 5 absorption components. CDOM light absorption by 20% of the samples corresponded
 6 with 5.03% of the cumulative CDOM contributions to non-water absorption. For
 7 non-algal particles and phytoplankton, 20% of the samples corresponded with 1.46%
 8 and 0.51% of cumulative light absorption contributions, respectively. Thus, for all the
 9 non-water absorption types, it was observed that CDOM light absorption was
 10 numerically dominant compared with non-algal particles and phytoplankton.

11 **3.4 Correlations between water quality parameters and light absorption**

12 The RDA data showed that the forward selected explanatory variables could explain
 13 the variability of light absorption characteristics with species-environment
 14 correlations of 0.781 (Fig. 6). The first two axes of RDA explained 43.7% of total
 15 variability in light absorption characteristics of all the collected water samples (axis
 16 one, 34.3%; axis two, 9.4%). Coefficients between environmental variables with axes
 17 in RDA indicated that TSM, TN, and EC had a strong correlation with light
 18 absorption characteristics, followed by TDS and Chla. TDS, TP, and DOC were most
 19 closely corrected to CDOM light absorption (Fig. 6). TSM, TN, and Chla were best
 20 correlated to light absorption of phytoplankton, non-algal particulates, and total
 21 particulates at 440 nm (Fig. 6). EC and pH were related to the CDOM spectral slope
 22 ($S_{275-295}$) (Fig. 6).

23 The Pearson correlation coefficients (r_p) between water quality and light
 24 absorption characteristics presented in Table 3 indicate that CDOM light absorption
 25 ($\alpha_{CDOM335}$ and $\alpha_{CDOM440}$) showed a significantly positive correlation with TN, TP, TDS,
 26 and DOC ($p < 0.01$), but had no correlation with Chla concentration ($p > 0.05$, $n=46$).
 27 There was also no correlation between $S_{275-295}$ and Chla concentration. However,
 28 $S_{275-295}$ presented a significantly positive correlation with DOC, pH, and EC in this
 29 plateau water ($p < 0.01$, $n = 46$). Light absorption of pigments at 440 nm showed a
 30 significantly positive correlation with TN ($r_p = 0.377$, $p < 0.01$, $n = 46$) and TSM ($r_p =$
 31 0.515 , $p < 0.01$, $n = 46$), and there was also no linear relationship with Chla
 32 concentration. The light absorption at 440 nm of total particulates and non-algal

1 particulates both had a significant positive correlation with TSM ($r_p = 0.985$, $p < 0.01$,
2 $n = 46$).

3 **4 Discussion**

4 **4.1 Dissolved organic carbon in river and terminal lakes**

5 Previous studies showed that DOC concentrations in inland waters always decrease
6 with the prolongation of water residence times due to biodegradation and
7 photobleaching in humid regions (Curtis & Adams, 1995). However, terminal lakes
8 with long water residence times exhibited higher DOC values than the river waters in
9 this study. The most likely explanation for the opposite pattern of DOM
10 concentration is that the most refractory DOC is diluted in humid regions and
11 evapoconcentrated in semi-arid regions (Song et al., 2013b). Further, the higher
12 alkalinity and EC in the terminal lakes compared with river waters may explain the
13 inverse pattern (Table 1). The sodicity of water could also increase DOM solubility.
14 Increasing EC (salt concentration) would result in decreased osmotic potential,
15 which has negative effects on microbial activity (Mavi et al., 2012). DOM along
16 with other nutrients come from soil via runoff and leaching, and can accumulate in
17 terminal lakes due to lower microbial activity. Furthermore, the average DOC
18 concentration in rivers ($25.99 \pm 6.64 \text{ mg L}^{-1}$) is higher than in many rivers reported
19 in other studies (Alvarez-Cobelas et al., 2012; Evans et al., 2005; Findlay and
20 Sinsabaugh, 2003; Song et al., 2013b; Spencer et al., 2012; Spencer et al., 2010;
21 Worrall and Burt, 2004). DOC levels in rivers are linked to climate and watershed
22 landscape characteristics (Alvarez-Cobelas et al., 2012; Jiang et al., 2014). The
23 elevated DOC concentrations in these plateau rivers could be attributed to
24 evaporation, which would be expected to be extreme in the arid environment of
25 Inner Mongolia Plateau (Hao et al., 2007). Furthermore, Inner Mongolia region is
26 located in semiarid climatic zones with low rainfall, and the impoundment of these
27 plateau waters mainly depended on surface runoff. The land use types around the
28 sampling locations were mainly grassland and forest (Bai et al., 2008). The high

1 DOC concentration in the waters highlights the organic-rich nature of these
2 ecosystems (Zheng et al., 2015).

3 Many monitoring data indicate that DOC concentration in rivers shows a
4 tendency to increase year by year, potentially due to recovery from acid deposition
5 (Evans et al., 2005; Monteith et al., 2007). DOC concentrations in surface water are
6 depressed when acid anion concentrations are high, and increase as acidic anion
7 concentrations decrease (Evans et al., 2005). The response of water parameters to acid
8 deposition would be apparent in the alkalinity measurements. In this study, the
9 positive relationship between DOC and alkalinity indicated that an empirical model
10 might be established in Hulun Buir Plateau waters for estimating DOC storage based
11 on water alkalinity, with calibration by a comprehensive dataset. Within semi-arid
12 regions, DOC was always related to salinity, which could reflect the water residence
13 times and dissolved organic matter accumulation (Curtis and Adams, 1995; Song et al.,
14 2013b). A positive correlation between DOC and EC was established based on the
15 collected data (Fig. 2b; $R^2 = 0.72$). A positive correlation between DOC and EC was
16 also reported in semi-arid east-central Alberta, Canada (Curtis & Adams, 1995). More
17 than 80% of lakes in Inner Mongolia Plateau are saline lakes, and the salinity in the
18 collected waters was generally higher. Prior research has shown that inland saline
19 lakes always contain higher concentrations of DOC in semi-arid region (Arts et al.,
20 2000). Also, concentrations of DOC in various waters were found to increase with
21 salinity in semi-humid/semi-arid regions in China (Song et al., 2013b).

22 Relationship between CDOM properties and nutrients (TN and TP) may be used
23 to track the plant-derived source. Strong linear relationships were shown between
24 nutrients (TN and TP) and DOC in the surface waters of Hulun Buir Plateau (Fig. 2c,
25 Fig. 2d). The types of land use around the water sampling locations may be a crucial
26 to the nutrition levels in the waters. The main land types in Hulun Buir Plateau were
27 grassland and forest with high nitrogen and organic matter content. A similar
28 relationship between TN and DOC was also shown during rainfall in agricultural and
29 forested wetlands in the Shibetsu watershed, Japan (Jiang et al., 2014). Investigations
30 of 14 boreal and temperate regions of Québec (Canada) with 198 different lakes
31 showed that when TP concentrations were at very low level, DOC and TP fitted linear
32 regressions on log-transformed data ($r^2 = 0.34$, $p < 0.001$) (Lapierre & del Giorgio,
33 2012). Studies have indicates that DOC concentration in the natural waters

1 environment is closely related to the phytoplankton production and biological activity.
2 Phytoplankton can convert dissolved inorganic carbon (mainly means CO_2) to DOM
3 through the photosynthesis, and part of the DOM in the water can be degraded to the
4 CO_2 by heterotrophic microorganisms. TN and TP concentrations could affect the
5 respiration and reproduction of microbes and phytoplankton, which could have a
6 pronounced influence on the conversion between DOC and CO_2 . The respiration is
7 conducted according to the Redfield ratio (C: N: P= 106:16:1) under aerobic
8 conditions. When C:N >20 and C:P >100, the biodegradation of DOC cannot be fully
9 performed (Redfield et al., 1963). In this study, the ratios in the most water samples
10 accord with the degradation condition. We suspect the above relationships (Fig. 2c,
11 Fig. 2d) may be connected with the escape of CO_2 from the waters. Furthermore, CO_2
12 flux in lakes is negatively correlated with lake size (Raymond et al., 2013). If the flow
13 and size of lakes in the study is reduced by the construction of reservoirs, irrigation,
14 and landuse, the higher carbon emissions may develop. Furmore, DOC concentration
15 and CO_2 escape from the waters are both affect by season and watershed characters
16 (Organelli et al., 2014; Tranvik et al., 2009; Riera et al., 1999).

17 The surface area of global inland waters is 3,624,000 km^2 based on the
18 calculation of Raymond et al. (2013), it is 2.47% of the Earth's land surface
19 (Raymond et al., 2013). They play a substantial role in the global carbon (C) cycle,
20 and about 2.9 Pg C/yr is migrated, transformed, and stored via inland water ecological
21 system (Tranvik et al., 2009). DOM is the major component of organic matter during
22 the process of the terrestrial organic matter transported to the lakes and coastal zone
23 by rivers, and it represents an essential link between terrestrial and aquatic ecosystems
24 (Cole et al., 2007; Harrison et al., 2005). DOC is the most important intermediate in
25 the global carbon cycle fueling microbial metabolism. Based on the revision of the
26 'active pipe' hypothesis, the total current emissions from inland waters to atmosphere
27 as CO_2 and CH_4 may be as high as 1.4 Pg C/yr, the carbon burial in inland waters
28 sediments may amount to 0.6 Pg C/yr, and the annual transport of 0.9 Pg C from
29 inland waters to the ocean (Tranvik et al., 2009). The inland waters area in Inner
30 Mongolian Plateau is about 9,843 km^2 , which is 0.27% of the global inland waters
31 surface. So a rough count in this study would be 3.8 Tg C for annual emissions, 1.6
32 Tg C for annual sediment burial, and 2.4 Tg C the annual transport from Inner
33 Mongolian Plateau inland waters. Furthermore, over 80% of lakes in Inner Mongolian

1 Plateau are saline lakes and salt lakes. Previous studies have showed that saline lakes
2 emitted more substantial carbon to the atmosphere and contained higher DOC
3 concentrations than freshwater (Anderson and Stedmon, 2007; Duarte et al., 2008;
4 Osburn et al., 2011). The dissolved inorganic C concentrations was about 10-15 times
5 greater than in freshwater lakes (Cole et al., 2011; Duarte et al., 2008; Tranvik et al.,
6 2009). Therefore the above estimation possibly underestimated the contribution of
7 Inner Mongolian Plateau inland waters to the global carbon cycle.

8 PCA was performed in order to explain the variations in water quality in the
9 different sampling waters (Fig. 3). From the locations of the variables in Fig. 3A, PC1
10 could be involved in the non-water light absorption, which may be one important
11 factor that distinguishes particulate light absorption from CDOM light absorption. TN
12 and TP with positive loadings on PC2 indicated that PC2 may be related to
13 anthropogenic nutrient disturbance. The close juxtaposition of TDS and Chl a shown
14 in Fig. 3A indicated that TDS concentration may be linked to phytoplankton
15 metabolism. The PCA also indicated that non-water light absorption and
16 anthropogenic nutrient disturbance might be the causes of the diversity of water
17 quality in different sampling locations.

18 **4.2 Analysis of CDOM spectral characteristic**

19 Terminal lakes exhibited significantly higher CDOM light absorption than river
20 waters (Table 1). Terminal lakes in the study all had high EC value ($>1000 \mu\text{S cm}^{-1}$)
21 (Song et al., 2013b). Researchers reported that the structure and composition of
22 DOM alters obviously after flowing into saline lakes (Waiser & Robarts, 2000). The
23 use of $E_{250:365}$ for the tracking of changes in CDOM molecule size has been
24 practically demonstrated by many researchers (Helms et al., 2008; Song et al.,
25 2013b). Increasing $E_{250:365}$ values indicate a decrease in aromaticity and molecular
26 weight (MW) of CDOM, and the results of this study showed that CDOM in river
27 waters had higher aromaticity and MW than terminal lakes. The relatively low
28 CDOM MW in terminal lakes implied that chromophores associated with high MW
29 CDOM were destroyed by photolysis with the prolongation of hydraulic retention
30 time and irradiation. In terminal lakes, the change of molecular structure in high MW

1 CDOM caused by bond cleavage, resulted in its transformation to a low MW pool.
2 Furthermore, previous studies showed that the bulk of $E_{250:365}$ mean values in 30 U.S.
3 rivers ranged from 5.00 to 6.50 (Spencer et al., 2012), and in the Elizabeth River and
4 Chesapeake Bay estuary ranged from 4.33 to 6.23 (Helms et al., 2008). Compared
5 with the reported river waters, the plateau rivers in the study presented significantly
6 higher mean $E_{250:365}$ values. The intense solar irradiance in this region potentially
7 enhances the photochemical degradation of allochthonous DOM and high MW
8 CDOM, causing an increase in the $E_{250:365}$ values with the production of low MW
9 CDOM. Two rivers in the intermontane plateaus of the western U.S. with intense
10 solar irradiance also presented higher $E_{250:365}$ values (9.05 ± 1.47 , 7.38 ± 0.84) than
11 other plain rivers (Spencer et al., 2012).

12 SUVA₂₅₄ values in the river waters in this study were lower than the following
13 rivers: Mean SUVA₂₅₄ values in 30 U.S. rivers examined ranged from 1.31 to 4.56 L
14 mg C⁻¹ m⁻¹ (Spencer et al., 2012), while SUVA₂₅₄ in the Songnen Plain waters ranged
15 from 2.3 (± 0.14 SD) to 8.7 (± 2.8 SD) (Song et al., 2013b), in the tropical Epulu river
16 ranged from 3.08 to 3.57 L mg C⁻¹ m⁻¹ (Spencer et al., 2010). A possible driver of this
17 CDOM characteristic in these plateau rivers is coupled evapoconcentration,
18 photo-degradation and photobleaching with strong plateau ultraviolet radiation
19 (Spencer et al., 2014; Spencer et al., 2009). SUVA₂₅₄ values have been proven to have
20 a correlation with DOM aromaticity as determined by ¹³C-NMR (Weishaar et al.,
21 2003). In this study, the lower SUVA₂₅₄ measurements in terminal lakes indicated that
22 the aromatic moieties of CDOM in this environment were lower compared within
23 river waters due to the effect of photodegradation and microbial degradation with
24 prolonged water residence times. From the conclusions of some studies on SUVA₂₅₄
25 and hydrophobic organic acid fraction (HPOA), the SUVA₂₅₄ values were always
26 comparable to HPOA, and the conjecture could be reached that low SUVA₂₅₄ values
27 indicate that the aquatic systems with little vascular plant input, and the
28 autochthonous sources (algal or microbial) dominated the organic matter content
29 (Spencer et al., 2008; Weishaar et al., 2003). Conversely, high SUVA₂₅₄ values
30 indicated that the organic matter in aquatic systems was dominated by allochthonous
31 sources with significant vascular plant inputs (Cory et al., 2007; Spencer et al., 2012).
32 In this study, the SUVA₂₅₄ revealed that the contribution of vascular plant matter to

DOM in rivers might be greater than the terminal lakes, and the high MW DOM was more abundant in fresh waters than terminal lakes. Shorter residence time of DOM in river waters and the quick exchange rates of flow water shortened the photo-oxidation of DOM, which could be responsible for the phenomenon (Song et al., 2013b; Spencer et al., 2012).

The majority of river waters in the study exhibited significantly higher $S_{275-295}$ values than allochthonous-dominated fresh waters which include the majority of U.S. rivers ($13.00 - 16.50 \times 10^{-3} \text{ nm}^{-1}$) (Spencer et al., 2012), and the Congo River ($12.34 \times 10^{-3} \text{ nm}^{-1}$) (Spencer et al., 2009), which indicated the proportion of autochthonous sources CDOM and photolysis of allochthonous CDOM in plateau waters was higher than freshwater rivers. The ratio of spectral slopes (S_R), an indicator of CDOM molecular weight and source (Helms et al., 2008; Spencer et al., 2010), indicated that river water samples with lower S_R values contained greater allochthonous and higher MW DOM than terminal lakes. Previous studies have proven that S values were inversely proportional to CDOM MW, with a steeper spectral slope signifying decreasing aromaticity, and a shallower spectral slope signifying an increasing aromatic content (Gonnelli et al., 2013; Helms et al., 2008). S values in this study indicated that the percentage of high MW humic acid in CDOM in Hulun Lake was greater than in Buir Lake, whereas the proportion of fulvic acid and aromatic compounds showed the reverse trend. Furthermore, $S_{275-295}$ could be used as indicator for terrigenous DOC percentage in bodies of water (Gonnelli et al., 2013). Our results indicate that the percentage of terrigenous DOC is higher in Hulun Lake than Buir Lake. From the known geological history of the region, Buir Lake is a throughput lake with inflow from the Halaha river and outflow from the Wuerxun river to Hulun Lake. Also, the land use pattern in Buir Lake watersheds shows potential desertification. Hulun Lake not only accepts the Wuerxun River flowing from Buir Lake, but also receives the water from the Kerulun River. Natural grassland with the fresh organic rich layers was dominant in Hulun Lake watersheds. The geographical location and land use pattern together account for the larger percentage of terrigenous DOM in Hulun Lake.

4.3 Correlations between water quality parameters and light absorption

Strong positive correlations between CDOM absorption coefficients and TN, TP, and

DOC concentrations in all water samples indicated that CDOM light absorbance could be explained by variations in nutrients and DOC concentration to a greater extent. Previous studies have shown that CDOM absorption in a range of spectra could be used as a proxy for DOC in many inland water bodies, including the Kolyma river basin (Griffin et al., 2011), the Epulu river (Spencer et al., 2010), as well as many U.S. rivers (Spencer et al., 2012), and our results once again support this relationship in the aquatic environment of Hulun Buir Plateau. $S_{275-295}$ and Chl *a* concentration had no correlation; a similar phenomenon has been identified in the Ligurian Sea (BOUSSOLE site) and the Mediterranean Sea (central eastern basin) (Bracchini et al., 2010; Organelli et al., 2014). These results indicated that CDOM in natural waters did not originate entirely from the release and dissociation of the phytoplankton, and that terrestrial input and microbial activities all play an important role in the generation and properties of CDOM (Ogawa et al., 2001; Rochelle-Newall & Fisher, 2002). Furthermore, strong solar radiation in the plateau area and the open ocean enhanced the photobleaching of CDOM, resulting in variation in the structural composition of CDOM. Inner Mongolian Plateau has high levels of wind and dust, and a number of lakes in the region have shrunk remarkably in recent decades (Tao et al., 2015). The shrinkage and resuspension of lakes as a result of climatic conditions may seriously influence the optical characteristics and Chl *a* concentration. The significant positive correlation between light absorption with TSM may be related to the unique climate of Hulun Buir Plateau with alternating of windy, rainless, and frigid conditions, which need to be further studied.

4.4 Contribution of CDOM to light absorption

At all the sampling locations, phytoplankton absorption played a minor role on total non-water light absorption (Fig. 4). The low levels of phytoplankton in the Hulun Buir Plateau lakes with higher salinity may be responsible for this phenomenon. Previous studies also showed that light absorption by non-algal particles often exceeds that of phytoplankton in shallow, inland lakes and coastal waters (Carder et al., 1991; Frenette et al., 2003). In most water samples examined in this study, CDOM was the dominant light-absorbing substance even when the CDOM absorption was minimal due to photobleaching in summer. The large contribution of CDOM to total absorption (approximately 50% at 440 nm in the surface layer) was also shown in the

1 Sepik River (Parslow et al., 1998). The large contribution of CDOM was also
2 identified in other water environments, such as a fluvial lake (Frenette et al., 2003),
3 the equatorial Pacific area (Bricaud et al., 2002), and the Ligurian Sea (Organelli et al.,
4 2014). The above analysis indicated that the waters in Hulun Buir Plateau were
5 Case-2 water with CDOM present in all the water samples (Morel & Prieur, 1977).
6 According to the optical classification of surface waters (Prieur & Sathyendranath,
7 1981), the majority of the collected river and terminal water samples in Hulun Buir
8 Plateau could be classified as “CDOM-type” water, and others were “NAP-type”.
9 Different catchment properties and water quality parameters could be responsible for
10 the variation in optical classification of these waters. Other studies have shown that
11 CDOM absorption was related to the EC of water (Sieczko & Peduzzi, 2014). EC
12 values in rivers and lakes of Hulun Buir Plateau showed a wide range, which may
13 affect the agglomeration or dissociation of particles and CDOM in the waters and
14 indirectly influence light absorption. In addition, in lakes located near the paddy field
15 and built-up areas, water quality is greatly influenced by human activities (Graeber et
16 al., 2012).

17 The light absorption of optically active compounds (OACs) determines the
18 inherent optical properties of waters. In our opinion, the pattern showed in Fig.4 is not
19 invariable, and it may change with season and some extreme climate events. First, as
20 a constituent of DOM, CDOM inputs to lakes are the mixture of allochthonous
21 organic substances delivered by river discharge and metabolites produced by
22 metabolic activities of autochthonous heterotrophic bacteria (Dillon and Molot, 1997;
23 Zhou et al., 2015). Terrestrial CDOM leached from the soil to the rivers and flowing
24 to the lakes is subject to diverse processes: physical flocculation and adsorption,
25 chemical photobleaching, and microbial degradation (Li et al., 2014). It is widely
26 recognized that CDOM loading and composition in aquatic environment are regulated
27 by ambient hydrology, landscape features, climate and aquatic organisms activity, and
28 vary seasonally and interannually (Dillon and Molot, 2005; Spencer et al., 2012;
29 Worrall and Burt, 2004; Griffin et al., 2011). For example, studies have indicated that
30 highly seasonal variability of DOC has been observed in high-latitude rivers,
31 characterized by rising concentration significantly with increasing discharge of these
32 rivers; spring snowmelt and winter freeze both have effect on DOC concentration
33 (Raymond et al., 2007). Photobleaching in summer dramatically altered the optical

properties of the surface waters with the CDOM absorption and fluorescence lost (Vodacek et al., 1997). Hulun Buir plateau is characterized by a typical semi-humid and semi-arid continental monsoon climate with intensive solar radiation (especially in summer) and long frozen period. The temperature, snowmelt, solar radiation, water quality, and plankton and microbes activity all have unnegligible effect on CDOM photo-absorption characteristic. Secondly, in shallow, inland lakes, light absorption of non-algal particles often exceeds that by phytoplankton. The light absorption of CDOM and non-algal particles often decreases in a near-exponential manner with increasing optical wavelength, which will not be benefit for the growth of phytoplankton. In Hulun Buir plateau, phytoplankton growth is very slow even in the warm season, the high pH, salinity and alkalinity of water may be responsible for the phenomenon. So the relative contributions of phytoplankton to non-light absorption in Hulun Buir plateau may be difficult to improve due to the depressed algae growth. Non-algal particles concentration is related to the TSM (Table 2), the sediment suspension caused by strong winds in late autumn and winter, the increase of surface runoffs in spring with snowmelt, and the change of land use pattern, these factors may cause the increase of TSM concentration, resulting the increasing of the light absorption by non-algal particles. Above all, many factors could affect the relative contributions of OACs to total non-water light absorption, and the issue should be discussed upon the local environment and climate.

Pareto-Lorenz curve analysis indicated that in Hulun Buir Plateau and the similar geographical aquatic environment, we could randomly select 20% of the collected water samples to analyze the light absorption, the contributions of optically active substances might be estimated based on these absorption values and the cumulative contributions in this study. Then the estimated value could be used to identify water type and evaluate regional homogeneity of non-water light absorption.

5 Conclusions

There have little knowledge of CDOM properties and their relationship to environmental factors in plateaus areas based on the previous research results. The unique environmental conditions of plateau areas with dry and cold climates have an important effect on CDOM properties and potential implications for carbon cycling in inland water. A preliminary study was conducted in Hulun Buir plateau which includes several freshwater rivers and numerous non-contributing lakes with high

1 salinity. The study primarily provides information on the water quality and CDOM in
2 river and terminal lakes in cold and arid plateaus regions. Also it provides insight into
3 CDOM properties linked to water quality and climate in inland water. The following
4 conclusions were obtained: (1) A significant difference in water quality was observed
5 between river and terminal lakes in Hulun Buir plateau ($p < 0.01$). The non-water
6 light absorption and anthropogenic nutrient disturbance might be the main causes of
7 the wide range of water quality parameters; (2) CDOM in river waters had higher
8 aromaticity, MW, and vascular plant contribution than in terminal lakes in cold and
9 arid plateau regions and other fresh water rivers due to the strong evapoconcentration,
10 intense ultraviolet irradiance and plateau landscape features; (3) Environmental
11 variables TSM, TN, and EC had a strong correlation with light absorption
12 characteristics, followed by TDS and Chl a in the waters of Hulun Buir plateau. Study
13 of the optical-physicochemical correlation is helpful for evaluating the potential
14 influence of water quality factors on non-water light absorption in arid and cold
15 plateau water environments, and it is useful for the understanding the satellite remote
16 sensing data of plateau inland water.

17 **Acknowledgments**

18 This study was financially supported by the National Natural Science Foundation of
19 China (No. 41171293) and the “One Hundred Talents Program” of the Chinese
20 Academy of Sciences granted to Dr. Kaishan Song.

22 **Reference**

- 23 Alvarez-Cobelas, M., Angeler, D. G., Sanchez-Carrillo, S., and Almendros, G.: A
24 worldwide view of organic carbon export from catchments, *Biogeochemistry*,
25 107, 275-93, doi: 10.1007/s10533-010-9553-z, 2012.
- 26 Anderson, N. J., and Stedmon, C. A.: The effect of evapoconcentration on dissolved
27 organic carbon concentration and quality in lakes of SW Greenland, *Freshwat.*
28 *Biol.*, 52, 280-89, doi: 10.1111/j.1365-2427.2006.01688.x, 2007.
- 29 Arts, M. T., Robarts, R. D., Kasai, F., Waiser, M. J., Tumber, V. P., Plante, A. J., Rai,
30 H., and de Lange, H. J.: The attenuation of ultraviolet radiation in high
31 dissolved organic carbon waters of wetlands and lakes on the northern Great
32 Plains, *Limnol. Oceanogr.*, 45, 292-99, 2000.
- 33 Bai, Y. F., Wu, J. G., Xing, Q., Pan, Q. M., Huang, J. H., Yang, D. L., and Han, X. G.:
34 Primary production and rain use efficiency across a precipitation gradient on the

1 Mongolia plateau, *Ecology*, 89, 2140-53, doi: 10.1890/07-0992.1, 2008.

2 Bracchini, L., Tognazzi, A., Dattilo, A., Decembrini, F., Rossi, C., and Loiselle, S.:
3 Sensitivity analysis of CDOM spectral slope in artificial and natural samples:
4 an application in the central eastern Mediterranean Basin, *Aquat. Sci.*, 72,
5 485-98, doi: 10.1007/s00027-010-0150-y, 2010.

6 Bricaud, A., Morel, A., and Prieur, L.: Absorption by dissolved organic matter of the
7 sea (Yekkow substance) in the UV and visible domains, *Limnol. Oceanogr.*, 26,
8 43-53, 1981.

9 Bricaud, A., and Stramski, D.: Spectral absorption coefficients of living
10 phytoplankton and nonalgal biogenous matter: A comparison between the Peru
11 upwelling area and the Sargasso Sea, *Limnol. Oceanogr.*, 35, 562-82, 1990.

12 Bricaud, A., Roesler, C. S., Parslow, J. S., and Ishizaka, J.: Bio-optical studies during
13 the JGOFS-equatorial Pacific program: a contribution to the knowledge of the
14 equatorial system, *Deep Sea Res. II: Topical Studies in Oceanography*, 49,
15 2583-99, doi: 10.1016/S0967-0645(02)00049-8, 2002.

16 Carder, K. L., Hawes, S., Baker, K., Smith, R., Steward, R., and Mitchell, B.:
17 Reflectance model for quantifying chlorophyll a in the presence of productivity
18 degradation products, *J. Geophys. Res.- Oceans* (1978–2012), 96, 20599-611,
19 1991.

20 Cleveland, J. S., and Weidemann, A. D.: Quantifying absorption by aquatic particles
21 - A multiple-scattering correction for galss-fiber filters, *Limnol. Oceanogr.*, 38,
22 1321-27, 1993.

23 Coble, P. G.: Marine Optical Biogeochemistry: The Chemistry of Ocean Color,
24 *Chem. Rev.*, 107, 402-18, doi: 10.1021/cr050350, 2007.

25 Cole, J. J., Prairie, Y. T., Caraco, N. F., McDowell, W. H., Tranvik, L. J., Striegl, R.
26 G., Duarte, C. M., Kortelainen, P., Downing, J. A., Middelburg, J. J., and
27 Melack, J.: Plumbing the global carbon cycle: Integrating inland waters into the
28 terrestrial carbon budget, *Ecosystems*, 10, 171-84, doi:
29 10.1007/s10021-006-9013-8, 2007.

30 Cole, J. J., Carpenter, S. R., Kitchell, J., Pace, M. L., Solomon, C. T., and Weidel, B.:
31 Strong evidence for terrestrial support of zooplankton in small lakes based on
32 stable isotopes of carbon, nitrogen, and hydrogen, *PNAS* 108, 1975-80, doi:
33 10.1073/pnas.1012807108, 2011.

34 Cory, R. M., McKnight, D. M., Chin, Y.-P., Miller, P., and Jaros, C. L.: Chemical
35 characteristics of fulvic acids from Arctic surface waters: Microbial
36 contributions and photochemical transformations, *J. Geophys. Res. - Biogeosci.*,
37 112, doi: 10.1029/2006jg000343, 2007.

38 Curtis, P. J., and Adams, H. E.: Dissolved organic matter quantity and quality from
39 freshwater and saltwater lakes in east-central Alberta, *Biogeochemistry*, 30,
40 59-76, doi: 10.1007/bf02181040, 1995.

- 1 De Haan, H., and De Boer, T.: Applicability of light absorbance and fluorescence as
2 measures of concentration and molecular size of dissolved organic carbon in
3 humic Laken Tjeukemeer, *Water Res.*, 21, 731-34, 1987.
- 4 Dillon, P. J., and Molot, L. A.: Effect of landscape form on export of dissolved
5 organic carbon, iron, and phosphorus from forested stream catchments, *Water*
6 *Resour. Res.*, 33, 2591-600, doi: 10.1029/97wr01921, 1997.
- 7 Dillon, P. J., and Molot, L. A.: Long-term trends in catchment export and lake
8 retention of dissolved organic carbon, dissolved organic nitrogen, total iron, and
9 total phosphorus: The Dorset, Ontario, study, 1978-1998, *J. Geophys. Res. -*
10 *Biogeosci.*, 110, doi: 10.1029/2004jg000003, 2005.
- 11 Duarte, C. M., Prairie, Y. T., Montes, C., Cole, J. J., Striegl, R., Melack, J., and
12 Downing, J. A.: CO₂ emissions from saline lakes: A global estimate of a
13 surprisingly large flux, *J. Geophys. Res. - Biogeosci.*, 113, doi:
14 10.1029/2007jg000637, 2008.
- 15 Evans, C. D., Monteith, D. T., and Cooper, D. M.: Long-term increases in surface
16 water dissolved organic carbon: Observations, possible causes and
17 environmental impacts, *Environ. Pollut.*, 137, 55-71, doi:
18 10.1016/j.envpol.2004.12.031, 2005.
- 19 Findlay, S. E. G., and Sinsabaugh, R. L.: *Aquatic Ecosystems Interactivity of*
20 *Dissolved Organic Matter*. Academic press, Elsevier Science USA, 2003.
- 21 Frenette, J. J., Arts, M. T., and Morin, J.: Spectral gradients of downwelling light in a
22 fluvial lake (Lake Saint-Pierre, St-Lawrence River), *Aquat. Ecol.*, 37, 77-85, doi:
23 10.1023/a:1022133530244, 2003.
- 24 Gonnelli, M., Vestri, S., and Santinelli, C.: Chromophoric dissolved organic matter
25 and microbial enzymatic activity. A biophysical approach to understand the
26 marine carbon cycle, *Biophys. Chem.*, 182, 79-85, doi:
27 10.1016/j.bpc.2013.06.016, 2013.
- 28 Graeber, D., Gelbrecht, J., Pusch, M. T., Anlanger, C., and von Schiller, D.:
29 Agriculture has changed the amount and composition of dissolved organic
30 matter in Central European headwater streams, *Sci. Total Environ.*, 438, 435-46,
31 doi: 10.1016/j.scitotenv.2012.08.087, 2012.
- 32 Griffin, C. G., Frey, K. E., Rogan, J., and Holmes, R. M.: Spatial and interannual
33 variability of dissolved organic matter in the Kolyma River, East Siberia,
34 observed using satellite imagery, *J. Geophys. Res. - Biogeosci.*, 116, doi:
35 10.1029/2010jg001634, 2011.
- 36 Gueguen, C., Granskog, M. A., McCullough, G., and Barber, D. G.: Characterisation
37 of colored dissolved organic matter in Hudson Bay and Hudson Strait using
38 parallel factor analysis, *J. Mar. Syst.*, 88, 423-33, doi:
39 10.1016/j.jmarsys.2010.12.001, 2011.
- 40 Hao, Y., Wang, Y., Huang, X., Cui, X., Zhou, X., Wang, S., Niu, H., and Jiang, G.:

1 Seasonal and interannual variation in water vapor and energy exchange over a
2 typical steppe in Inner Mongolia, China, *Agric. For. Meteorol.*, 146, 57-69, doi:
3 10.1016/j.agrformet.2007.05.005, 2007.

4 Harrison, J. A., Caraco, N., and Seitzinger, S. P.: Global patterns and sources of
5 dissolved organic matter export to the coastal zone: Results from a spatially
6 explicit, global model, *Global Biogeochem. Cycles*, 19, GB4S04, doi:
7 10.1029/2005GB002480, 2005.

8 Helms, J. R., Stubbins, A., Ritchie, J. D., Minor, E. C., Kieber, D. J., and Mopper, K.:
9 Absorption spectral slopes and slope ratios as indicators of molecular weight,
10 source, and photobleaching of chromophoric dissolved organic matter,
11 *Limnology and Oceanography*, 53, 955-69, doi: 10.4319/lo.2008.53.3.0955,
12 2008.

13 Jerlov, N. G.: *Optical Oceanography*, Oceanography Series, 5. Elsevier, Amsterdam,
14 1968.

15 Jiang, R., Hatano, R., Zhao, Y., Kuramochi, K., Hayakawa, A., Woli, K. P., and
16 Shimizu, M.: Factors controlling nitrogen and dissolved organic carbon exports
17 across timescales in two watersheds with different land uses, *Hydrol. Processes*
18 28, 5105-21, doi: 10.1002/hyp.9996, 2014.

19 Kitidis, V., Stubbins, A. P., Uher, G., Upstill Goddard, R. C., Law, C. S., and
20 Woodward, E. M. S.: Variability of chromophoric organic matter in surface
21 waters of the Atlantic Ocean, *Deep Sea Research Part II: Topical Studies in*
22 *Oceanography*, 53, 1666-84, 2006.

23 Kowalczyk, P., A. Stedmon, C., and Markager, S.: Modeling absorption by CDOM
24 in the Baltic Sea from season, salinity and chlorophyll, *Mar. Chem.*, 101, 1-11,
25 doi: 10.1016/j.marchem.2005.12.005, 2006.

26 Lapierre, J.-F., and del Giorgio, P. A.: Geographical and environmental drivers of
27 regional differences in the lake pCO₂ versus DOC relationship across
28 northern landscapes, *J. Geophys. Res. - Biogeosci.*, 117, doi:
29 10.1029/2012jg001945, 2012.

30 Li, G., Liu, J., Ma, Y., Zhao, R., Hu, S., Li, Y., Wei, H., and Xie, H.: Distribution and
31 spectral characteristics of chromophoric dissolved organic matter in a coastal
32 bay in northern China, *Journal of Environmental Sciences*, 26, 1585-95, doi:
33 <http://dx.doi.org/10.1016/j.jes.2014.05.025>, 2014.

34 Lorenz, M. O.: *Methods of Measuring the Concentration of Wealth*. Publications of
35 the American Statistical Association 9, 209-19, 1905.

36 Mavi, M. S., Sanderman, J., Chittleborough, D. J., Cox, J. W., and Marschner, P.:
37 Sorption of dissolved organic matter in salt-affected soils: Effect of salinity,
38 sodicity and texture, *Sci. Total Environ.*, 435, 337-44, doi:
39 10.1016/j.scitotenv.2012.07.009, 2012.

40 Miller, W. L.: Photochemical principles and experimental considerations, *Aquatic*

1 Humic Substances: Ecology and Biogeochemistry. Springer, Berlin, 1998.

2 Monteith, D. T., Stoddard, J. L., Evans, C. D., de Wit, H. A., Forsius, M., Hogasen,
3 T., Wilander, A., Skjelkvale, B. L., Jeffries, D. S., Vuorenmaa, J., Keller, B.,
4 Kopacek, J., and Vesely, J.: Dissolved organic carbon trends resulting from
5 changes in atmospheric deposition chemistry, *Nature*, 450, 537-U9, doi:
6 10.1038/nature06316, 2007.

7 Mopper, K., and Kieber, D. J.: Chapter 9 - Photochemistry and the Cycling of
8 Carbon, Sulfur, Nitrogen and Phosphorus, in: *Biogeochemistry of Marine*
9 *Dissolved Organic Matter*, edited by: Carlson, D. A. H. A., Academic Press, San
10 Diego, 455-507, 2002.

11 Morel, A., and Prieur, L.: Analysis of variations in ocean color, *Limnol. Oceanogr.*,
12 22, 709-22, doi: 10.4319/lo.1977.22.4.0709, 1977.

13 Niu, C., Zhang, Y. L., Zhou, Y. Q., Shi, K., Liu, X. H., and Qin, B. Q.: The Potential
14 Applications of Real-Time Monitoring of Water Quality in a Large Shallow
15 Lake (Lake Taihu, China) Using a Chromophoric Dissolved Organic Matter
16 Fluorescence Sensor, *Sensors*, 14, 11580-94, doi: 10.3390/s140711580, 2014.

17 Ogawa, H., Amagai, Y., Koike, I., Kaiser, K., and Benner, R.: Production of
18 refractory dissolved organic matter by bacteria, *Science*, 292, 917-20, doi:
19 10.1126/science.1057627, 2001.

20 Osburn, C. L., Wigdahl, C. R., Fritz, S. C., and Saros, J. E.: Dissolved organic matter
21 composition and photoreactivity in prairie lakes of the U.S. Great Plains,
22 *Limnol. Oceanogr.*, 56, 2371-90, doi: 10.4319/lo.2011.56.6.2371, 2011.

23 Organelli, E., Bricaud, A., Antoine, D., and Matsuoka, A.: Seasonal dynamics of
24 light absorption by chromophoric dissolved organic matter (CDOM) in the NW
25 Mediterranean Sea (BOUSSOLE site), *Deep-Sea Research Part*
26 *I-Oceanographic Research Papers*, 91, 72-85, doi: 10.1016/j.dsr.2014.05.003,
27 2014.

28 Ortega-Retuerta, E., Reche, I., Pulido-Villena, E., Agusti, S., and Duarte, C. M.:
29 Distribution and photoreactivity of chromophoric dissolved organic matter in
30 the Antarctic Peninsula (Southern Ocean), *Mar. Chem.*, 118, 129-39, doi:
31 10.1016/j.marchem.2009.11.008, 2010.

32 Parslow, J. S., Clementson, L. A., Turnbull, A. R., and McKenzie, D. C.: Bio-optical
33 characteristics of oceans around Australia, *Ocean optics XIV conference papers.*
34 *Proceedings*, Hawaii, 1998.

35 Phong, D. D., Lee, Y., Shin, K. H., and Hur, J.: Spatial variability in chromophoric
36 dissolved organic matter for an artificial coastal lake (Shiwha) and the upstream
37 catchments at two different seasons, *Environ. Sci. Pollut. Res.*, 21, 7678-88, doi:
38 10.1007/s11356-014-2704-3, 2014.

39 Prieur, L., and Sathyendranath, S.: An optical classification of coastal and oceanic
40 waters based on the specific spectral absorption curves of phytoplankton

1 pigments, dissolved organic matter, and other particulate materials, *Limnol.*
2 *Oceanogr.*, 26, 671-89, 1981.

3 Raymond, P. A., McClelland, J. W., Holmes, R. M., Zhulidov, A. V., Mull, K.,
4 Peterson, B. J., Striegl, R. G., Aiken, G. R., and Gurtovaya, T. Y.: Flux and age
5 of dissolved organic carbon exported to the Arctic Ocean: A carbon isotopic
6 study of the five largest arctic rivers, *Global Biogeochem. Cycles*, 21, doi:
7 10.1029/2007gb002934, 2007.

8 Raymond, P. A., Hartmann, J., Lauerwald, R., Sobek, S., McDonald, C., Hoover, M.,
9 Butman, D., Striegl, R., Mayorga, E., Humborg, C., Kortelainen, P., Duerr, H.,
10 Meybeck, M., Ciais, P., and Guth, P.: Global carbon dioxide emissions from
11 inland waters, *Nature*, 503, 355-59, doi: 10.1038/nature12760, 2013.

12 Redfield, A. C., Ketchum, B. H., and Richards, F. A.: The influence of organisms on
13 the composition of sea water, Interscience Publishers, New York, 1963.

14 Riera, J. L., Schindler, J. E., and Kratz, T. K.: Seasonal dynamics of carbon dioxide
15 and methane in two clear-water lakes and two bog lakes in northern Wisconsin,
16 USA, *Can. J. Fish. Aquat. Sci.*, 56, 265-74, doi: 10.1139/cjfas-56-2-265, 1999.

17 Rochelle-Newall, E. J., and Fisher, T. R.: Production of chromophoric dissolved
18 organic matter fluorescence in marine and estuarine environments: an
19 investigation into the role of phytoplankton, *Mar. Chem.*, 77, 7-21, doi:
20 10.1016/s0304-4203(01)00072-x, 2002.

21 Sieczko, A., and Peduzzi, P.: Origin, enzymatic response and fate of dissolved
22 organic matter during flood and non-flood conditions in a river-floodplain
23 system of the Danube (Austria), *Aquat. Sci.*, 76, 115-29, doi:
24 10.1007/s00027-013-0318-3, 2014.

25 Siegel, D. A., Maritorena, S., Nelson, N. B., and Behrenfeld, M. J.: Independence
26 and interdependencies among global ocean color properties: Reassessing the
27 bio-optical assumption, *Journal of Geophysical Research-Oceans*, 110, doi:
28 10.1029/2004jc002527, 2005.

29 Song, K., Li, L., Tedesco, L. P., Li, S., Hall, B. E., and Du, J.: Remote quantification
30 of phycocyanin in potable water sources through an adaptive model, *ISPRS J.*
31 *Photogramm. Remote Sens.*, 95, 68-80, doi: 10.1016/j.isprsjprs.2014.06.008,
32 2014.

33 Song, K. S., Li, L., Tedesco, L. P., Li, S., Duan, H. T., Liu, D. W., Hall, B. E., Du, J.,
34 Li, Z. C., Shi, K., and Zhao, Y.: Remote estimation of chlorophyll-a in turbid
35 inland waters: Three-band model versus GA-PLS model, *Remote Sens.*
36 *Environ.*, 136, 342-57, doi: 10.1016/j.rse.2013.05.017, 2013a.

37 Song, K. S., Zang, S. Y., Zhao, Y., Li, L., Du, J., Zhang, N. N., Wang, X. D., Shao, T.
38 T., Guan, Y., and Liu, L.: Spatiotemporal characterization of dissolved carbon
39 for inland waters in semi-humid/semi-arid region, China, *Hydrol. Earth Syst.*
40 *Sci.*, 17, 4269-81, doi: 10.5194/hess-17-4269-2013, 2013b.

- 1 Spencer, R. G. M., Aiken, G. R., Wickland, K. P., Striegl, R. G., and Hernes, P. J.:
2 Seasonal and spatial variability in dissolved organic matter quantity and
3 composition from the Yukon River basin, Alaska, *Global Biogeochem. Cycles*,
4 22, doi: 10.1029/2008gb003231, 2008.
- 5 Spencer, R. G. M., Stubbins, A., Hernes, P. J., Baker, A., Mopper, K., Aufdenkampe,
6 A. K., Dyda, R. Y., Mwamba, V. L., Mangangu, A. M., Wabakanghanzi, J. N.,
7 and Six, J.: Photochemical degradation of dissolved organic matter and
8 dissolved lignin phenols from the Congo River, *J. Geophys. Res. - Biogeosci.*,
9 114, doi: 10.1029/2009jg000968, 2009.
- 10 Spencer, R. G. M., Hernes, P. J., Ruf, R., Baker, A., Dyda, R. Y., Stubbins, A., and
11 Six, J.: Temporal controls on dissolved organic matter and lignin
12 biogeochemistry in a pristine tropical river, Democratic Republic of Congo, *J.*
13 *Geophys. Res. - Biogeosci.*, 115, doi: 10.1029/2009jg001180, 2010.
- 14 Spencer, R. G. M., Butler, K. D., and Aiken, G. R.: Dissolved organic carbon and
15 chromophoric dissolved organic matter properties of rivers in the USA, *J.*
16 *Geophys. Res. - Biogeosci.*, 117, doi: 10.1029/2011jg001928, 2012.
- 17 Spencer, R. G. M., Guo, W., Raymond, P. A., Dittmar, T., Hood, E., Fellman, J., and
18 Stubbins, A.: Source and biolability of ancient dissolved organic matter in
19 glacier and lake ecosystems on the Tibetan Plateau, *Geochim. Cosmochim.*
20 *Acta*, 142, 64-74, doi: 10.1016/j.gca.2014.08.006, 2014.
- 21 Stedmon, C. A., Markager, S., and Kaas, H.: Optical properties and signatures of
22 chromophoric dissolved organic matter (CDOM) in Danish coastal waters,
23 *Estuarine Coastal and Shelf Science*, 51, 267-78, doi: 10.1006/ecss.2000.0645,
24 2000.
- 25 Tao, S., Fang, J., Zhao, X., Zhao, S., Shen, H., Hu, H., Tang, Z., Wang, Z., and Guo,
26 Q.: Rapid loss of lakes on the Mongolian Plateau, *PNAS* 112, 2281-86, doi:
27 10.1073/pnas.1411748112, 2015.
- 28 Tranvik, L. J., Downing, J. A., Cotner, J. B., et al.: Lakes and reservoirs as regulators
29 of carbon cycling and climate, *Limnol. Oceanogr.*, 54, 2298-314, doi:
30 10.4319/lo.2009.54.6_part_2.2298, 2009.
- 31 Vodacek, A., Blough, N. V., DeGrandpre, M. D., Peltzer, E. T., and Nelson, R. K.:
32 Seasonal variation of CDOM and DOC in the Middle Atlantic Bight: Terrestrial
33 inputs and photooxidation, *Limnol. Oceanogr.*, 42, 674-86, 1997.
- 34 Waiser, M. J., and Robarts, R. D.: Changes in composition and reactivity of
35 allochthonous DOM in a prairie saline lake, *Limnol. Oceanogr.*, 45, 763-74,
36 2000.
- 37 Weishaar, J. L., Aiken, G. R., Bergamaschi, B. A., Fram, M. S., Fujii, R., and
38 Mopper, K.: Evaluation of specific ultraviolet absorbance as an indicator of the
39 chemical composition and reactivity of dissolved organic carbon, *Environ. Sci.*
40 *Technol.*, 37, 4702-08, doi: 10.1021/es030360x, 2003.

- 1 Worrall, F., and Burt, T.: Time series analysis of long-term river dissolved organic
2 carbon records, *Hydrol. Processes* 18, 893-911, doi: 10.1002/hyp.1321, 2004.
- 3 Xie, H., Aubry, C., Zhang, Y., and Song, G.: Chromophoric dissolved organic matter
4 (CDOM) in first-year sea ice in the western Canadian Arctic, *Mar. Chem.*, 165,
5 25-35, doi: 10.1016/j.marchem.2014.07.007, 2014.
- 6 Yacobi, Y. Z., Alberts, J. J., Takacs, M., and Mcelvaine, M.: Absorption spectroscopy
7 of colored dissolved organic carbon in Georgia (USA) rivers: the impact of
8 molecular size distribution, *J. Limnol.*, 62, 41-46, 2003.
- 9 Zhang, Y., Zhang, E., Yin, Y., van Dijk, M. A., Feng, L., Shi, Z., Liu, M., and Qin, B.:
10 Characteristics and sources of chromophoric dissolved organic matter in lakes
11 of the Yungui Plateau, China, differing in trophic state and altitude, *Limnol.*
12 *Oceanogr.*, 55, 2645-59, doi: 10.4319/lo.2010.55.6.2645, 2010.
- 13 Zhang, Y. L., Qin, B. Q., Zhang, L., Zhu, G. W., and Chen, W. M.: Spectral
14 absorption and fluorescence of chromophoric dissolved organic matter in
15 shallow lakes in the middle and lower reaches of the Yangtze River, *J. Freshwat.*
16 *Ecol.*, 20, 451-59, doi: 10.1080/02705060.2005.9664760, 2005.
- 17 Zhang, Y. L., Qin, B. Q., Zhu, G. W., Zhang, L., and Yang, L. Y.: Chromophoric
18 dissolved organic matter (CDOM) absorption characteristics in relation to
19 fluorescence in Lake Taihu, China, a large shallow subtropical lake,
20 *Hydrobiologia*, 581, 43-52, doi: 10.1007/s10750-006-0520-6, 2007.
- 21 Zheng, H., Gao, J., Teng, Y., Feng, C., and Tian, M.: Temporal Variations in Soil
22 Moisture for Three Typical Vegetation Types in Inner Mongolia, Northern
23 China, *PLoS One* 10, doi: 10.1371/journal.pone.0118964, 2015.
- 24 Zhou, Y., Zhang, Y., Shi, K., Niu, C., Liu, X., and Duan, H.: Lake Taihu, a large,
25 shallow and eutrophic aquatic ecosystem in China serves as a sink for
26 chromophoric dissolved organic matter, *J. Great Lakes Res.*, 41, 597-606, doi:
27 <http://dx.doi.org/10.1016/j.jglr.2015.03.027>, 2015.

1 Table 1. Water quality and CDOM absorption parameters of water samples collected
2 in Hulun Buir plateau

	River water (n= 22)		Terminal lakes (n= 24)	
	Mean	Min- Max	Mean	Min- Max
DOC	25.99±6.64	8.44- 39.74	83.83±68.79	23.03-300.50
TN	1.33±0.63	0.64- 3.51	4.58±3.80	1.39-19.03
TP	0.11±0.04	0.06- 0.23	1.52±1.87	0.12-6.31
TAlk	156.22±53.60	48.00- 298.56	652.70±642.15	96.00-2906.40
EC	325.95±141.64	106.70-745.00	5729.69±9715.26	1236-41000.00
TDS	163.07±70.62	53.40-372.00	743.59±483.34	93.10-1505.00
Turb	20.21±20.80	2.19- 83.84	273.79±608.75	1.75-2521.20
Chl a	4.62±3.95	0.04-11.06	6.27±11.06	0-41.07
a _{CDOM} 335	18.29±9.87	4.71-40.07	36.16±30.27	10.47-158.24
a _{CDOM} 440	2.68±1.68	0.60-7.14	5.60±5.10	0.83-26.21
E _{250:365}	7.80±2.30	5.43-12.30	8.02±3.48	5.47-20.73
SUVA ₂₅₄	2.74±1.08	1.08- 4.79	1.90±0.57	0.79-3.74
S ₂₇₅₋₂₉₅	0.019±0.004	0.015-0.027	0.02±0.004	0.015-0.031
S _R	1.00±0.17	0.73-1.35	1.05±0.09	0.91-1.25

3 TN, TP, TDS, TSM, TAlk and DOC represent total nitrogen, total phosphorus, total
4 dissolved solids, total suspended matter, total alkalinity and dissolved organic carbon
5 concentration, respectively (mg L⁻¹). Turb represents water turbidity (NTU), and EC
6 represents the electrical conductivity of water samples (µs cm⁻¹). Chla is chlorophyll a
7 concentration (µg L⁻¹). The unit SUVA₂₅₄ was L mg C⁻¹ m⁻¹.

1

2 Table 2 Rivers (or freshwater lakes) names, sampling numbers, basin area, width,

3 Length, max water depth, elevation in Inner Mongolia Plateau

Name	Number	Area (km ²)	Max Depth (m)	Elevation (m)	Width (m)	Length (km)	Defined Type
Kerulen River	1, 11	7153	1.9	-	60-70	1264	River
Hulun Lake	5-9	2339	33	545.9	30-40 km	-	River
Hailar River	21, 31	54500	1	1100	30-130	1430	River
Yimin River	22-23	22725	2.5	-	20-50	390	River
Buir Lake	24-28	609	21.6	583	20 km	-	River
Ergun River	29	151184	>2	-	200-300	1666	River
Moegele River	36	150	2	-	1-6	319	River
Zhadun River	30, 41	3100	4	675	2-8		River
Wulannuor wetland	34	710	3.5	540	-	-	River
Qingkai River	38	-	2	580	1-10		River

4 “-”denotes without data.

Table 3. Pearson correlation coefficients for general water quality and light absorption properties

	$a_{\text{CDOM}}(335)$	$a_{\text{CDOM}}(440)$	$a_{\text{PB}}(440)$	$a_{\text{phy}}(440)$	$a_{\text{NAP}}(440)$	$S_{275-2295}$
TN	0.574**	0.548**	0.288*	0.377**	0.264	0.164
TP	0.508**	0.401**	0.078	0.194	0.062	0.151
TDS	0.483**	0.534**	-0.048	0.178	-0.068	0.015
DOC	0.527**	0.411**	-0.007	0.151	-0.024	0.377**
pH	0.192	0.129	-0.121	0.026	-0.131	0.567**
Chl a	0.021	0.084	-0.056	0.224	-0.083	0.089
TSM	0.021	0.045	0.985**	0.515**	0.985**	-0.073
EC	-0.024	-0.083	0.055	0.081	0.050	0.506**

* $p < 0.05$; ** $p < 0.01$.

Units of DOC, TN, TP, TDS, TSM, and DOC concentrations are mg L^{-1} , Chla concentrations unit is $\mu\text{g L}^{-1}$, EC unit is $\mu\text{S cm}^{-1}$.

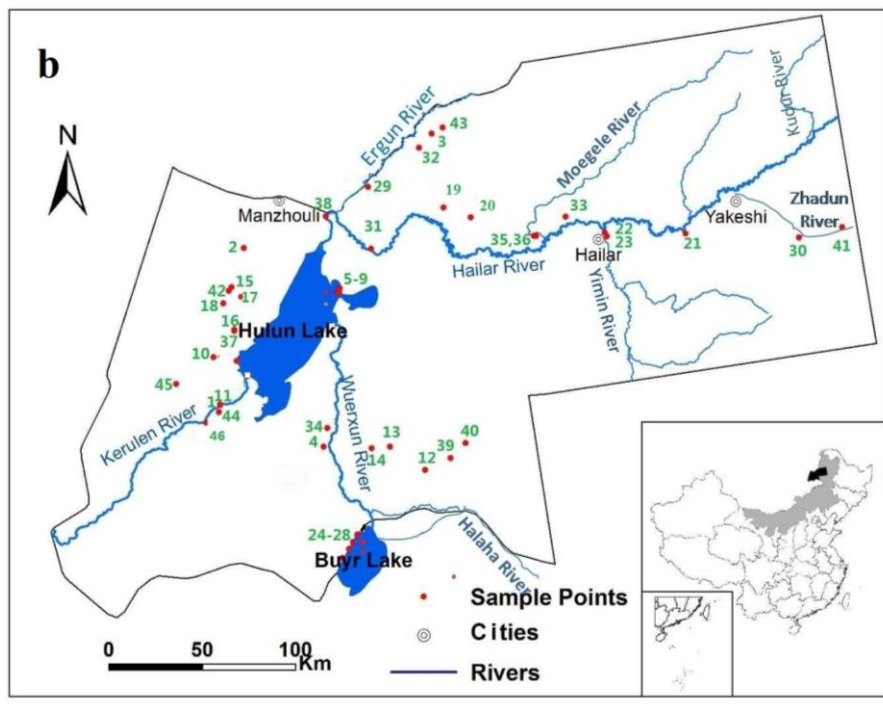
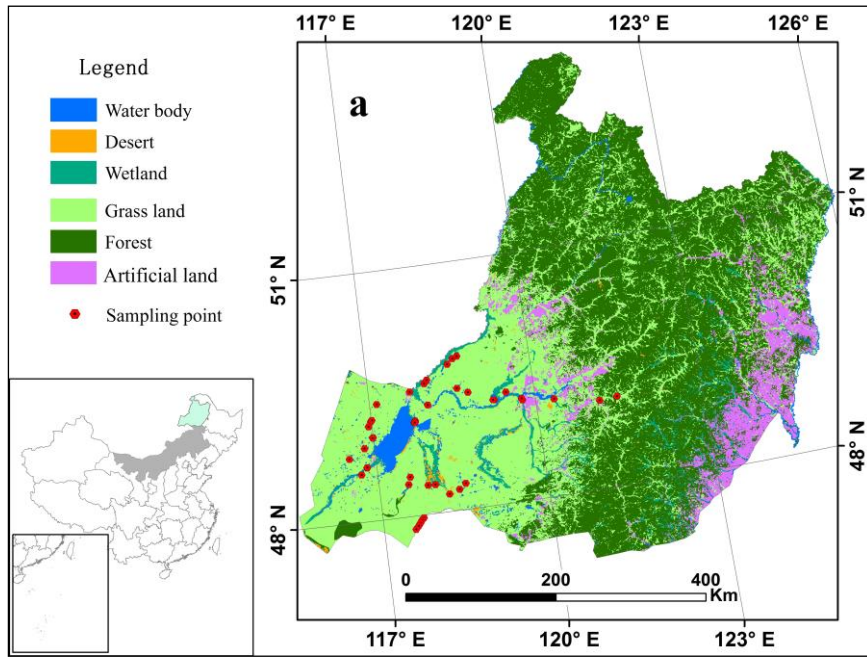
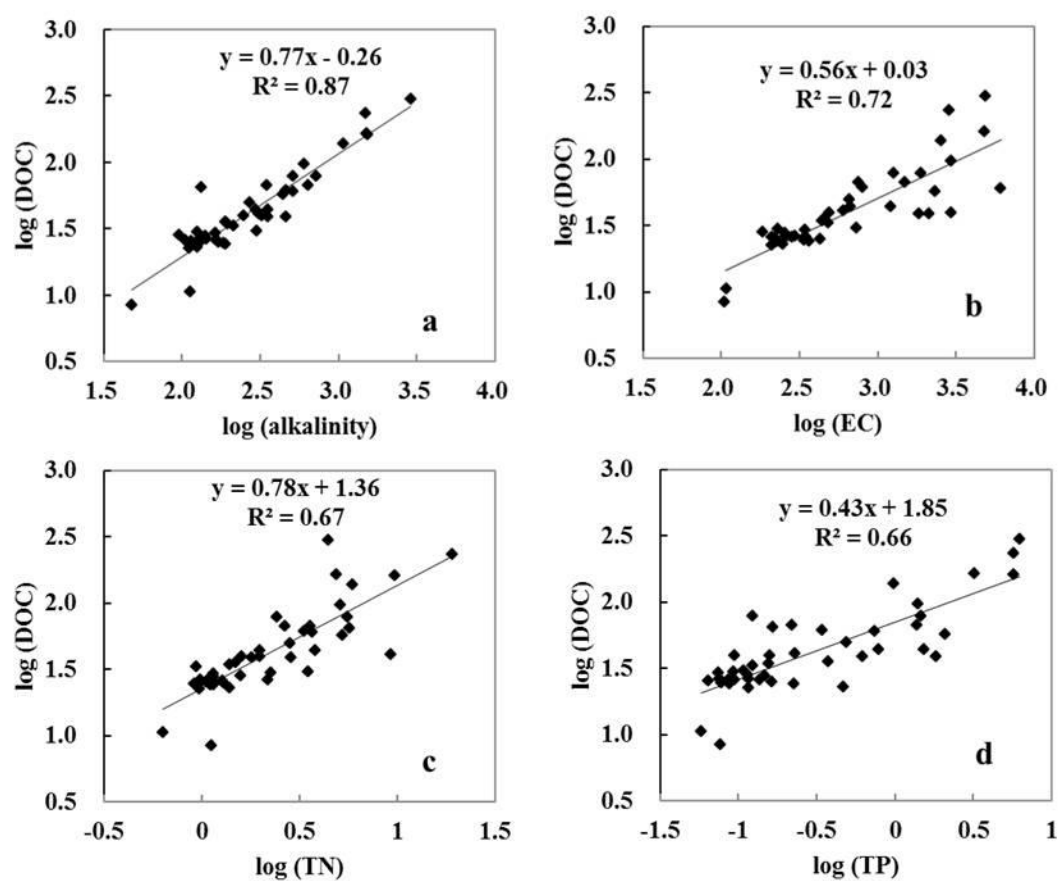


Figure 1. Study area location and sampling station distribution. The names, sampling numbers, and water types are listed in support materials (Table 1S)

1

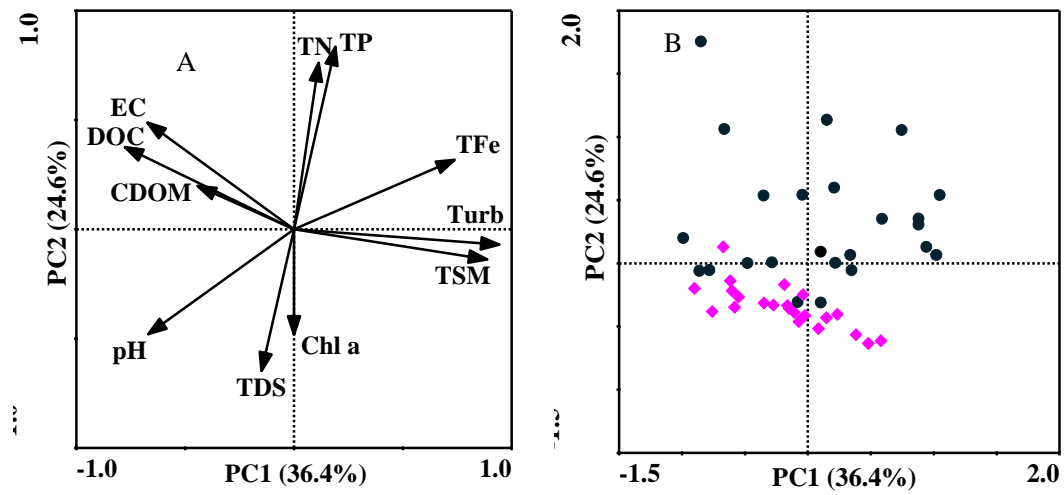


2

3 Figure 2. Correlation between DOC and alkalinity, EC, TN, and TP in Hulun Buir

4 plateau water

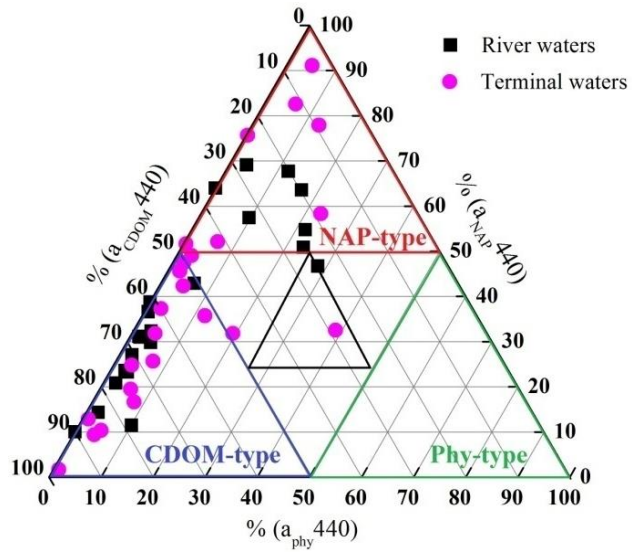
1



2

3

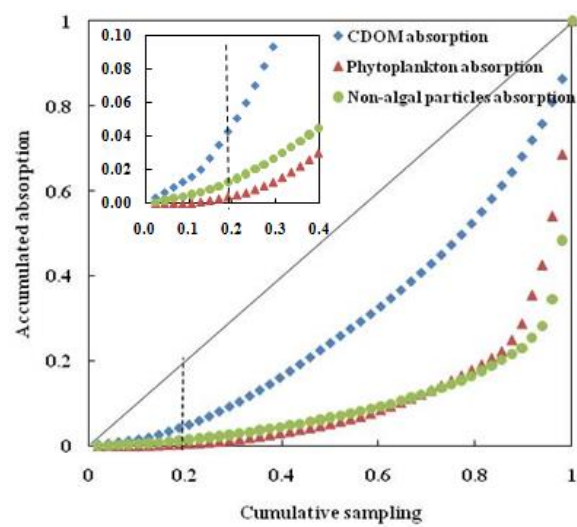
4 Figure 3. PCA of the physico-chemical characteristics of all collected waters, (A)
 5 Factors loading data, and (B) Sample scores. ● represents terminal lakes, and ◆
 6 represents river waters.



1

2 Figure 4. Relative contributions of CDOM, phytoplankton and non-algal particles to
 3 total non-water light absorption at 440 nm

1



2

3 Figure 5. Pareto- Lorenz curves derived from the total non-water light absorption at
 4 440 nm

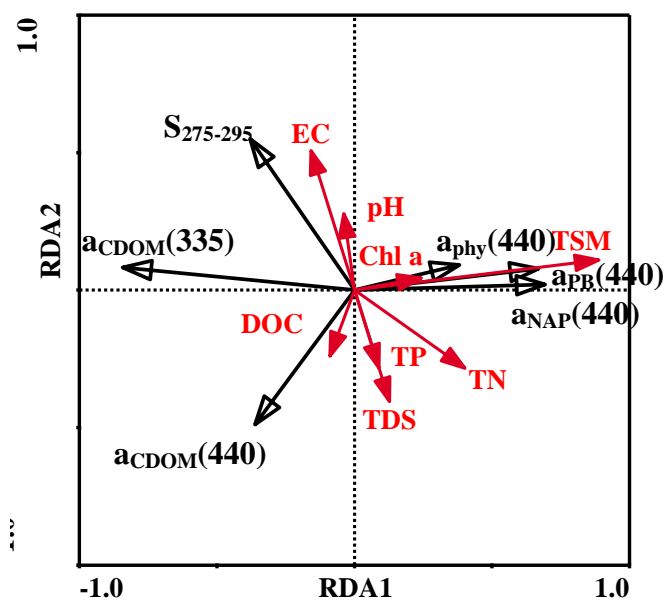


Figure 6. RDA of CDOM adsorption data and water quality parameters (n=44)