

Review 1

I would like to congratulate the authors for their hard work to improve the original manuscript. All the concerns and minor comments in my previous review have been considered. I believe the authors made a serious effort to reply to any request of clarification and review. Also the English text and fluency has been improved in many places.

My only complaint has to do with three important points which should be easy to address:

First, authors promised to provide information about the status for in-situ data of lakes as they reported it for rivers only. However, I don't see this point addressed in the text. I think that it is important to clarify. Readers might interpret that the problem is only in rivers and that we don't need altimetry in lakes if they are already well monitored with in situ water gauges. My recommendation is that authors provide a reference or add an explanatory sentence that avoids misunderstanding in readership.

We already added some additional information about the situation of in situ lake stations in the last revision. The problem is that there are no statistics or references about of the worldwide development of in-situ lake stations available. Therefore, we can only assume that the number of in situ stations also declines for lakes, as it does for rivers. We include an additional sentence in the manuscript in order to emphasize the need of altimetry for lake level monitoring.

In order to make a statement about the development of water level gauging stations an equivalent database such as the GRDC is required. In general, in situ water level data are managed by federal institutions which make data access very difficult. Because of the restricted data access and lack of in situ data for rivers and lakes, there is a strong need for using satellite altimetry to monitor both types of inland water bodies.

Second, authors state in response to my specific point about specular reflections in small rivers that the reason for these waveforms is land contamination. I think that they do not provide any evidence that this statement is correct. They are looking at the world through 18 Hz burst level waveforms that are an incoherent 300 m blur, whereas they should see with 3 m complex individual echoes (e.g. available for Envisat mission) correlated with 1 m satellite imagery. Authors, in theory, might be right in stating that a specular water level could be contaminated with a specular land echo. However since both are rare (in percent of ground cover) it would be very unlikely that a specular land return is adjacent to a specular water return. The proof that water is specular is in the Doppler processing of Individual Echoes. I recommend authors to refer the work titled "The Near-Specular Altimeter Waveforms of Small Inland Water Bodies" by Abileah et al. presented at last Coastal Altimetry Workshop held in Lake Constance (Germany) last year (see presentation at http://www.coastalt.eu/files/konstanzworkshop14/pres/11_Abileah_et_al._8th_CAW-oral_paperL.pdf). The authors should mention this insight in the background. As the nadir point approaches, passes over, recedes from water, the Doppler transitions (looking at phase) go from negative to zero to positive that is absolute proof. The computed velocity turns out to be exactly the satellite's speed of approach and receding from the location with water. In summary, this paper is not about waveforms and retracking, but it is about averaging values after retracking. The mentioning of waveforms and retracking is in the background. However, the analysis of radar returns is very important to understand disagreements and

poor performances in the case-studies of validation. I also find difficult to believe that hooking effect is a real problem. In fact authors state “problem is avoided or 'worked around' by using only nadir measurements”. The part of the revised manuscript between rows 77-95 is substantially based on old view of burst level waveforms. Coherent individual echo analysis leads to another view, as reported in the above presentation. I strongly recommend that authors rework this part and also take into account the new view (from Doppler processing of Individual Echoes) as well as say something about the prospect of exploiting future missions. Envisat had the limitation of collecting echoes for 1-sec every 60 sec. Due to mission design, Cryosat-2 and Sentinel-3 (soon in orbit) are also not continuous in the collection of echoes. On the opposite, Jason-CS/Sentinel-6 will collect continuously Individual echoes (see statement in

http://www.coastalt.eu/files/konstanzworkshop14/pres/98_CAW8_Session_Summaries.pdf)

We agree with your statements that quasi-specular waveforms over rivers are not contaminated by land. Our own investigations in the Amazon basin showed that especially over smaller rivers quasi-specular waveforms represent the water surface (Classification of Altimeter Waveforms for an Improved Estimation of Water Level Time Series over Inland Water, Schwatke et al., Hydrospace 2015, Frascati Italy, www.dgfi.tum.de/media/jahresbericht/posters/54ff9e9e3a2ec0300d4ce11261f5169f.pdf). The waveforms presented in this poster agree with your statements.

Therefore, we updated the manuscript part between row 77 and 95 as followed.

The major challenge of inland altimetry is the handling of different reflections within the large footprint (water, land, etc.). The shapes of altimeter waveforms vary depending on the different surface reflections. Waveforms reflected from open ocean or large lakes show typical brown-like shapes (Brown, 1977). In contrast, quasi-specular waveforms defined by one single peak occur mainly over smaller rivers. Both waveform groups are not influenced by land. However, near lake shores and over remaining inland, the land contamination of the radar echo leads to more than one reflection and results in degraded range quality or even to unusable data sets.

The problem of non ocean-like waveform shapes such as quasi-specular shapes over inland waters have to be considered when retracking waveforms. The affected waveforms do not have typical brown-like shapes and cannot be retracked by using ocean waveform retrackers (MLE (Challenor and Srokosz, 1989), NASA (Martin et al., 1983), etc). Therefore, additional retracking can be applied with retracking algorithms such as OCOG (Wingham et al., 1986), Improved Threshold (Hwang et al., 2006), etc. which are more robust with respect to the geometry of the waveforms and can achieve reliable heights. The choice of retracker depends on the quality of existing altimeter measurements which varies between investigated in land water bodies because of their extent, shape or ambient topography.

The selection of an insufficient retracking algorithm can also lead to the so-called 'hooking' or 'off-nadir' effects. This effect arises from off-nadir radar returns when the satellite is still/already over land but receives the main reflection from the off-nadir water areas. This leads to longer ranges visible in a parabolic shape of the resulting height sequence. This effect can be corrected by fitting curves to the resulting water levels (da Silva et al. 2010, Maillard et al. 2015). For each land-water transition a

parabola can be fitted to the measurements that can be used to correct the off-nadir effect. In this paper, the off-nadir data are discarded since for all targets enough reliable nadir-measurements are available.

Third, authors updated the method of estimating the precision of the single heights. It is based on the analysis of the along-track scatter of the measurements. They estimate the median of the water heights within a box. Then the median height is subtracted from the current water height. The absolute value of the difference is then used as “error” of the single measurement. The process is repeated moving the box forward. The fact to have errors associated to each measurement is a requirement of the Kalman filter. However, the authors didn’t reply to my comment that suggested using consecutive points to measure the noise for a specific target. Then to represent noise authors could use different methods (e.g., histogram). This methodology applied to all validation sites gives an overview where DAHITI processing performances of 18 Hz data are more degraded. I warmly encourage authors to provide a measure of the noise for each validation site.

Unfortunately, we are not sure, if we understand correctly your suggestion using consecutive points to measure the noise for a specific target. But from our point of view, a reliable estimation of noise/errors for water level time series is not easy to perform. At the moment, we obtain formal errors from the Kalman filtering step for each epoch of our DAHITI time series. Compared to the accuracies derived from the tide gauge validation these values are too optimistic but they nicely represent the annual variations of the time series (better results for high water periods than for low water periods).

Using a histogram or estimating a standard deviation of all remaining water heights after rejecting outliers would lead to a value of noise for each time period. But this method reveals only reliable errors for large lakes where many water level measurements are available. Using this method for small lakes and rivers would lead to a less reliable noise estimates because of the decreasing number of water levels. Especially, it can occur for small rivers that only a single water height is available and a noise value cannot be computed.

From our point of view, the precisions provided by DAHITI are currently the best possible solution. Of course, there is still room for improvements (e.g. including a full error covariance matrix in the kalman filter, i.e. correlation for consecutive altimeter measurements) - but this will be beyond the scope of the current manuscript.

Therefore, the current manuscript can be accepted for publication after the above additional comments are addressed. I would like to see their answers before publishing.

Review 2

Review of the paper: “DAHITI – An Innovative Approach for Estimating Water Level Time Series over Inland Water using Multi-Mission Satellite Altimetry“ by Schwatke et al.

The authors have improved their manuscript significantly and all issues of the major revision have been addressed. I still see some small issues with respect to investigating the improvements from individual parts of the processing chain. Additionally, the statement of providing better water heights (except from the fact of an improved temporal resolution) compared to other databases is not confirmed comprehensively (see below). Therefore, I recommend the paper for publication after considering the minor issues below.

General Comments

The manuscript focus is much clearer now. The figures and tables are significantly improved.

The (minor) role of the Kalman filter for improving the water level heights is clearer now. Furthermore, the authors mention that the major improvement is due to the various outlier detection processes (see also specific comments).

I agree with the decision to remove the grid from the general computation process while still keeping it as an option for further investigations.

The analysis of the improvements due to individual aspects of the processing chain is more extensive than before. In my opinion there might still be room for further testing, e.g. the improvement due to the first outlier detection, retracking etc., but this would be a little bit out of the scope of this paper. The comparison with a median filter revealed that the major improvements is due to the outlier detection. However, it is still mentioned several times in the text that the Kalman filter is the “central part” of the computation of the DAHITI time series (e.g. Line 415 or 627). I would suggest to rephrase these parts since it gives the impression that the Kalman filter in its current state is mainly responsible for the improved quality of the water heights.

Manuscript parts describing the Kalman filter as “central part” of the computation are updated.

The differences to the other water level databases are explained better, e.g. that no outlier correction is performed. However, to confirm the superior quality (e.g. line 1100 “significant accuracy improvement ...”) of the DAHITI time series, a comparison between the same points (e.g. based on the same Jason data) from the external databases and DAHITI would have to be done.

We agree that a comparison using the same input data would make the validation more comparable. However, one advantage of our approach is the usage of multi-mission altimeter data (e.g. Lake Superior) which also improves the water level time series because of the resulting higher temporal resolution. The applied outlier detection using SVR along the final time series leads to a better function fitting and also to a more reliable rejection of outliers which improves the quality of the final time series. Moreover, external data sets are using different altimeter missions which make a comparison even more difficult. When using only those points for a comparison which are part of all time-series, only very few data points would be available for a comparison and make the comparison unreliable. Over rivers, often the same altimeter missions (e.g. Envisat) are used and compared to external databases. For those targets (e.g. Japurá, River- Vila Bittencourt) the significant improvement is shown in Table 3.

Specific Comments

---- Title ----

I think the new title better reflects the contents of the manuscript. However, the authors might consider a slight change from “Inland Water” to “Inland Waters” since the database provides water levels for numerous lakes and rivers. -> updated

---- Text ----

Line 63: “to be passed” → this should be rephrased to something like “to be crossed” -> updated

Lines 120 -121: change to “... have been developed that provide water level time series over inland waters to the international community.” -> updated

Lines 340 – 343: The information about the special file format might be omitted. -> *The information about the special file format was removed.*

Line 408: “black dotted line” → the line in the plot is cyan and dashed

The dashed plotted line in cyan is the rejection interval of the SVR whereas the black dotted line is the threshold of the ADM which is already described correct in the paper.

Blue dots indicate valid measurements, red dots indicate rejected data that exceed the ADM threshold of 5 cm (black dotted line), and green dots mean outliers detected by SVR (with rejection interval of 5 cm).

Line 415: maybe rephrase “central part” as it gives the impression that the Kalman filter is the major reason for the improved water heights (see also general comments). -> updated

Lines 455 – 475: Since now usually all computations are referred to one “gridpoint” (so just one point), the title of the subsection should be rephrased. -> updated

Lines 485-487: This part first gives the reader the impression that there are vectors of n entries and then its stated that $n=1$. What I mean is that the description tries to sell more than there is actually happening. Of course I understand that the vector notation has to be kept in case a grid is used, but I think that rephrasing of this part would make it more clear. -> updated

Lines 491-494: “assigned to them” → rephrase -> updated

Line 517: “5cm²” and also in line 568. The authors wrote in their response to the first comments that this value is chosen from experience. In that case they should also at least mention it in the text and explain how they arrived at that number. -> updated

Lines 579 – 581 and lines 602 – 604: The difference between these two confidence levels is unclear. I suppose one refers to the first outlier detection (before computing the mean height) and one to the outlier detection in the water height time series? This should be made more clear. -> updated

Line 692: Maybe rephrase “peak-to-peak” to “seasonal water ranges” which makes it more clear. -> updated

Line 763: I think the term “non-retracked” is not correct here unless the authors use the tracker range provided by the altimetry instrument. If standard ocean ranges are utilized, these are retracked with an ocean retracker. -> updated

Lines 773-778: The differences between the first outlier detection and the second one should be made more clear. The same applies to Section 4.3.2 and 4.3.3.

In our opinion it is clearly shown that the first SVR is applied along the crossing altimeter track and the second SVR is applied along the final time series.

Lines 797 – 799: The comparison is not on an equal basis (see general comments). However, this is mentioned in the following. -> see general comments

Line 983: Rephrase “first” to “The first column shows ...”. This makes it more clear that the authors are talking about the table. -> updated

Line 1077: Is “der” part of the name of the institute? Otherwise it should be changed to “of the” Table 3: I think the table could be improved by providing the actual error values used for the outlier criteria instead of the check marks. -> not updated. `der` is part of the institute name.

Table 3: Some of the outlier percentages are quite high >30%. I think this should be mentioned in the text more clear, since rejecting a lot of measurements automatically improves the correlation and RMS compared to other databases. -> updated

Technical Comments

I have probably not caught everything, so someone with better knowledge of the English language should check it, too.

The paper was already checked by a native speaker of a professional proofreading service.

Generally the authors always write “in situ” but I think “in-situ” is correct (eg. lines 615, 618, 648, ...).

According to the dictionary, both spellings are accepted.

The proofreading services suggested changing this from “in-situ” to “in situ”.

This should be changed.

Line 298: comma “... input data, whereas ...” -> updated

Line 546: comma “In parallel, the ...” -> updated

Line 559: “start” → “initial” -> updated

Line 587: comma “In a last step, an ...” -> updated

Line 597: remove “as” -> updated

Line 623: comma “... South America, we focus ...” -> updated

Line 649: remove “the” -> updated

Line 666: rephrase to “... extent by a factor of up to 20.” -> updated

Line 673: comma “... North America, two ...” -> updated

Line 677: “party” → “partly” -> updated

Line 682: comma “... mountains, the ...” -> updated

Line 683: “in winter” → “during winter” -> updated

Line 685: comma "... Lake Buenos Aires, in-situ ..." -> updated

Line 697: "and" → "to" -> updated

Line 701: remove "the" -> updated

Line 707: maybe rephrase "borne" to "kept" -> updated

Line 750: change to: "... 1992 to 2014. The ..." -> updated

Line 833: comma "... time series, the same ..." -> updated

Line 865: "with" → "the" -> updated

Line 925: "unequal" → "non-uniform" -> updated

Line 941: comma "... time series, as well as ..." -> updated

Line 1095: comma "Also, the ..." -> updated

Line 1115: "preprocessing" → "pre-processing" -> not updated. According to the dictionary, the spelling is also accepted.

DAHITI - An Innovative Approach for Estimating Water Level Time Series over Inland Waters using Multi-Mission Satellite Altimetry

Christian Schwatke, Denise Dettmering, Wolfgang Bosch, and Florian Seitz

Deutsches Geodätisches Forschungsinstitut der Technischen Universität München (DGFI-TUM),
Arcisstr. 21, 80333 München, Germany

Correspondence to: Christian Schwatke
(christian.schwatke@tum.de)

Abstract. Satellite altimetry has been designed for sea level monitoring over open ocean areas. However, for some years, this technology has also been used to retrieve water levels from reservoirs, wetlands and in general any inland water body, although the radar altimetry technique has been especially applied to rivers and lakes. In this paper, a new approach for the estimation of inland water level time series is described. It is used for the computation of time series of rivers and lakes available through the web service ‘Database for Hydrological Time Series over Inland Waters’ (DAHITI). The new method is based on an extended outlier rejection and a Kalman filter approach incorporating cross-calibrated multi-mission altimeter data from Envisat, ERS-2, Jason-1, Jason-2, Topex/Poseidon, and SARAL/AltiKa, including their uncertainties. The paper presents water level time series for a variety of lakes and rivers in North and South America featuring different characteristics such as shape, lake extent, river width, and data coverage. A comprehensive validation is performed by comparisons with in situ gauge data and results from external inland altimeter databases. The new approach yields RMS differences with respect to in situ data between 4 cm and 36 cm for lakes and 8 cm and 114 cm for rivers, respectively. For most study cases, more accurate height information than from other available altimeter data bases can be achieved.

Keywords. Satellite Altimetry; Inland Waters; Kalman Filter; DAHITI; Envisat; ERS-2; Topex/Poseidon; Jason-1; Jason-2; SARAL/AltiKa

1 Introduction

Since the 1990s, monitoring and modelling the water cycle of the system Earth have become a very important task (Stakhiv

and Stewart, 2010). In particular, the knowledge of regional changes of water storage in rivers and lakes is fundamental for the risk assessment of natural disasters such as the droughts and floods which have been increasing over the last few decades (Guha-Sapir and Vos, 2011). Despite the growing importance of measurements, the number of in situ stations monitoring river discharge is globally declining. The number of river discharge time series provided by the Global Runoff Data Center (GRDC) decreased from about 7,300 to 1,000 stations between 1978 and 2013 (Global Runoff Data Center, 2013). In order to make a statement about the development of water level gauging stations an equivalent database such as the GRDC is required. In general, in situ water level data are managed by federal institutions which make data access very difficult. [Because of the restricted data access and lack of in situ data for rivers and lakes, there is a strong need for using satellite altimetry to monitor both types of inland water bodies.](#) However, many remote sensing satellites have been launched in the last few years measuring parameters relevant for the investigation of the water cycle, e.g. precipitation, water level, and gravity.

Among these remote sensing techniques is satellite altimetry. Besides its main design goal of measuring water levels in the ocean, satellite altimetry can also be used for deriving water levels of inland water bodies, i.e. lakes, reservoirs, rivers, and wetlands (e.g. Birkett 1995, Crétaux and Birkett 2006 and Crétaux et al. 2011). The advantage of satellite altimetry is its global availability, which allows for estimation of water level time series even in remote areas without local infrastructure. Satellite altimetry can provide water level time series longer than two decades.

However, because its measurement geometry provides observations along specific ground tracks touching water bodies is by chance. Thereby, big water bodies have a higher prob-

ability to be passed than smaller ones. In addition, because of a repeat orbit configuration the temporal resolution is limited to 35 (ERS-2, Envisat, SARAL/AltiKa) or 10 (Topex/Poseidon, Jason-1, Jason-2) days when only single altimeter missions are used. Thus, the combination of different altimeter systems plays a key role in increasing the temporal and spatial resolution as well as the length of the time series. Satellite altimetry has to cope with different problems over inland water which are mainly caused by the large pulse-limited footprint of radar altimeters. For altimeter missions using Ku-band such as Envisat, the resulting footprint varies between 2 km over the ocean and up to 16 km over the land (Chelton et al., 2001). Even for SARAL/AltiKa, measuring in Ka-band, the footprint size is still about 8 km (Schwatke et al., 2015).

The majority of problems in the field of inland satellite altimetry are the result of land contamination. This effect is two-fold: on the one hand the contamination of the radar echo leads to degraded range quality or even to unusable data sets, on the other hand so-called 'hooking' or 'off-nadir' effects occur. The second effect arises from off-nadir radar returns when the satellite is still/already over land but receives the main reflection from the off-nadir water areas. This leads to longer ranges visible in a parabolic shape of the resulting height sequence. This effect can be corrected by fitting curves to the resulting water levels (da Silva et al. 2010, Maillard et al. 2015). For each land-water transition a parabola can be fitted to the measurements that can be used to correct the off-nadir effect. In this paper, the off-nadir data are discarded since for all targets enough reliable nadir-measurements are available. The first effect is more challenging. The contamination of radar measurements by land causes a degeneration of ocean-like waveform shapes (Brown, 1977). The affected waveforms do not have typical brown-like shapes and cannot be retracked by using ocean waveform retracers (MLE (Challenor and Srokosz, 1989), NASA β (Martin et al., 1983), etc). Therefore, additional retracking can be applied with retracking algorithms such as OCOG (Wingham et al., 1986), Improved Threshold (Hwang et al., 2006), etc. which are more robust with respect to the geometry of the waveforms and can achieve reliable heights. The choice of retracker depends on the quality of existing altimeter measurements which varies between investigated inland water bodies because of their extent, shape or ambient topography. The major challenge of inland altimetry is the handling of different reflections within the large footprint (water, land, etc.). The shapes of altimeter waveforms vary depending on the different surface reflections. Waveforms reflected from open ocean or large lakes show typical brown-like shapes (Brown, 1977). In contrast, quasi-specular waveforms defined by one single peak occur mainly over smaller rivers. Both waveform groups are not influenced by land. However, near lake shores and over remaining inland, the land contamination of the radar echo leads to more than one reflection and results in degraded range quality or even

to unusable data sets. The problem of non ocean-like waveform shapes such as quasi-specular shapes over inland waters have to be considered when retracking waveforms. The affected waveforms do not have typical brown-like shapes and cannot be retracked by using ocean waveform retracers (MLE (Challenor and Srokosz, 1989), NASA β (Martin et al., 1983), etc). Therefore, additional retracking can be applied with retracking algorithms such as OCOG (Wingham et al., 1986), Improved Threshold (Hwang et al., 2006), etc. which are more robust with respect to the geometry of the waveforms and can achieve reliable heights. The choice of retracker depends on the quality of existing altimeter measurements which varies between investigated inland water bodies because of their extent, shape or ambient topography. The selection of an insufficient retracking algorithm can also lead to the so-called 'hooking' or 'off-nadir' effects. This effect arises from off-nadir radar returns when the satellite is still/already over land but receives the main reflection from the off-nadir water areas. This leads to longer ranges visible in a parabolic shape of the resulting height sequence. This effect can be corrected by fitting curves to the resulting water levels (da Silva et al. 2010, Maillard et al. 2015). For each land-water transition a parabola can be fitted to the measurements that can be used to correct the off-nadir effect. In this paper, the off-nadir data are discarded since for all targets enough reliable nadir-measurements are available.

The potential of satellite altimetry for the estimation of water level time series and for understanding the terrestrial water cycle was shown by Birkett (1995), Crétaux and Birkett (2006) and Crétaux et al. (2011). In most studies, only single satellite tracks were used for the computation of water level time series. The most popular study areas were the Great Lakes (Ponchaut and Cazenave (1998) used Topex/Poseidon) and the Amazon basin. For the latter, investigations were based on different missions: e.g. Topex/Poseidon (de Oliveira Campos et al., 2001; Zakharova et al., 2006), Topex/Jason-1/Jason-2 (Seyler et al., 2013) and ERS-2/Envisat (da Silva et al., 2010). In addition to these individual investigations four global databases have been developed that provide the international community water level time series over inland water level time series over inland waters to the international community. The different processing strategies of these four databases are described as follows.

The *Hydroweb database*^{c2} was developed by the Laboratoire d'Etudes en Géophysique et Océanographie Spatiales (LEGOS). For the estimation of water level time series over lakes and rivers, a multi-mission approach using satellite altimeter data of Topex/Poseidon, ERS-1, ERS-2, Envisat, Jason-1, and GFO is applied. The physical heights are estimated in a track-wise manner and are corrected by the slope of the geoid or mean lake level and by range biases with respect to Topex/Poseidon. The final time series are computed by merging the altimeter data on a monthly basis. The ap-

^{c2}<http://www.legos.obs-mip.fr/soa/hydrologie/hydroweb/>

plied approaches are published in Crétaux et al. (2011) and da Silva et al. (2010).

The *River & Lakes database*^{c0} was developed by the European Space Agency and the De Montfort University (ESA-DMU). It provides track-wise time series derived from Jason-2 and Envisat for a variety of inland waters. For each track crossing the water body of interest a single time series is processed. The methodology for the estimation uses an expert system which is based on neural networks (Berry et al., 1997).

The *Global Reservoir and Lake Monitor (GRLM)*^{c0} is maintained by the Foreign Agricultural Service of the United States Department of Agriculture (USDA). Water level time series of lakes and reservoirs are estimated by using a segment of one single altimeter track over the investigated target. The time series are composed of data from consecutive altimeter missions measured along the same ground track. A combination of contemporaneous missions is not performed. The method for the estimation of water level time series is described in Birkett et al. (2011).

The *Database for Hydrological Time Series over Inland Waters (DAHITI)*^{c0} was launched by the Deutsches Geodätisches Forschungsinstitut (DGFI, now DGFI-TUM) in 2013. Currently, DAHITI provides about 250 time series of rivers, lakes, reservoirs, and wetlands. The methodology for the estimation of water level time series in DAHITI is based on an extended outlier rejection and a Kalman filter approach described in detail in the article at hand.

In contrast to the methods already published in the literature, our approach is based on a rigorous combination of a variety of altimeter missions. In addition, extended outlier detection is applied and optional waveform retracking is implemented. Moreover, the processing contains a full error propagation and provides accuracies for each height measurement. Furthermore, correlations between altimeter measurements are considered in order to achieve more reliable errors for each water level height. The current paper provides detailed information on the estimation of water level time series and performs a comprehensive validation by comparing the results with in situ gauging data and time series from other databases (Hydroweb, River & Lakes, and GRLM).

The article is structured as follows: In Section 2 the altimeter data that serve as input for the processing are described. In Section 3 the methodology for the estimation of water level time series from satellite altimeter data using a Kalman filter approach is explained. Section 4 starts with the introduction of the validation areas and data before the resulting water level time series and validation results are presented. The paper concludes with a summary of the results and outlook.

2 Altimeter Data and Height Estimation

In this paper, altimeter measurements from Topex, Jason-1, Jason-2, ERS-2, Envisat, and SARAL/AltiKa are used depending on the data coverage for the inland water bodies under investigation. In principle, data from Geosat, ERS-1, HY-2A, IceSAT, and Cryosat-2 can be used. However, these missions are neglected in the current investigations for a number of reasons, i.e. lack of data over land, non/long-repeat cycle, bad data quality, or missing waveform information. The applied missions can be separated into two groups according to their orbit characteristics. Topex/Poseidon was launched in 1992 into an orbit with a repeat cycle of 9.9156 days and a track separation at the equator of about 300 km. The mission was followed by its successors, Jason-1 and Jason-2. These three altimeter satellites can be used for estimating continuous time series over more than two decades. The second group starts with ERS-2 (launched in 1995), followed by Envisat and SARAL/AltiKa. The orbit of these missions is defined by a repeat cycle of 35 days and a track separation of about 80 km at the equator. The data are available for almost two decades with a data gap between 10/2010 (end of Envisat core mission) and 03/2013 (launch of SARAL/AltiKa). The data for Envisat on its drifting orbit (10/2010-04/2012) are not used. ERS-1 is not yet ready for use in DAHITI but will be integrated in the near future. This will enable extensions of the time series back to 1991.

For the estimation of water levels, Sensor Geophysical Data Records (SGDR) altimeter products are used which provide high-frequent ranges as well as altimeter waveforms. The altimeter waveforms allows individual retracking in order to achieve more reliable altimeter ranges, especially for smaller inland water bodies. Table 1 shows a list of the altimeter missions used and provides information about the product, cycle length, frequency, along-track distance between altimeter measurements on the ground, time period, and mean range bias with respect to Topex.

Depending on the investigated inland water body the original ocean ranges in the SGDR are very often corrupted. ~~Especially over small lakes and rivers the altimeter waveforms do not exhibit the typical ocean-like shape because of land contamination.~~ Especially over small lakes and rivers the altimeter waveforms do not exhibit the typical ocean-like shapes but quasi-specular shapes. Land-contaminated altimeter waveforms are usually more peaky and noisy which lead to flat-patched and complex waveforms (Berry et al., 2005). The quality of the ranges can be improved by retracking these waveforms. In this study, the ‘Improved Threshold Retracker’ (Hwang et al., 2006) with a threshold of 10% is applied if additional retracking is necessary. In general, all altimeter measurements of smaller lakes and rivers are retracked if the ocean product does not lead to reliable time series because of the influence of land. Testing different thresholds for the retracking of altimeter measurements showed that a threshold of 10 % gives slightly better results for

^{c0}<http://tethys.eaprs.cse.dmu.ac.uk/RiverLake/shared/main>

^{c0}http://www.pecad.fas.usda.gov/cropexplorer/global_reservoir/

^{c0}<http://dahiti.dgfi.tum.de>

Table 1: List of all altimeter missions used in this study together with their main characteristics.

Mission	Product	Cycle length	Data rate	Along-track distance	Time period	Mean range bias
Envisat ¹	SGDR (v2.1)	35 d	18 Hz	~374 m	2002 - 2010	450.8 ± 7.9 mm
Envisat (EM) ¹	SGDR (v2.1)	35 d	18 Hz	~374 m	2010 - 2011	441.2 ± 2.6 mm
ERS-2 ¹	SGDR (REAPER)	35 d	18 Hz	~374 m	1995 - 2007	71.2 ± 6.9 mm
Jason-1 ^{2,3}	SGDR-C	9.9156 d	20 Hz	~294 m	2002 - 2009	97.3 ± 1.3 mm
Jason-1 (EM) ^{2,3}	SGDR-C	9.9156 d	20 Hz	~294 m	2009 - 2012	97.2 ± 2.6 mm
Jason-1 (GM) ^{2,3}	SGDR-C	9.9156 d	20 Hz	~294 m	2012 - 2013	103.1 ± 1.7 mm
Jason-2 ^{2,3,4}	SGDR-D	9.9156 d	20 Hz	~294 m	2008 - active	-4.7 ± 1.0 mm
Poseidon ^{2,3}	ALT SDR (L1B)	9.9156 d	10 Hz	~620 m	1992 - 2002	-1.1 ± 7.2 mm
Topex ^{2,3}	ALT SDR (L1B)	9.9156 d	10 Hz	~620 m	1992 - 2002	-0.2 ± 1.2 mm
Topex (EM) ^{2,3}	ALT SDR (L1B)	9.9156 d	10 Hz	~620 m	2002 - 2005	-0.0 ± 2.5 mm
SARAL/AltiKa ^{3,5}	SGDR-T (patch 2)	35 d	40 Hz	~173 m	2013 - active	-67.5 ± 1.7 mm

operated by: ¹ESA, ²NASA, ³CNES, ⁴EUMETSAT, ⁵ISRO

smaller lakes and rivers. In our implementation of the ‘Improved Threshold Retracker’ the first sub-waveform is always chosen. Nor do we use a reference height for choosing the sub-waveform such as the last range over ocean as described in (Hwang et al., 2006) since this is difficult in the case of small lakes and rivers. This algorithm is very robust and delivers ranges for all surface types which are more reliable than the original ranges over small inland waters. However, over open water (i.e. larger lakes) the resulting ranges are less precise than ranges derived from retracking algorithms for ocean applications. It is known that switching retracking algorithms along a single satellite track leads to height offsets (Crétau et al., 2009). To avoid those offsets, all altimeter measurements of an investigated inland water body are retracked with the same algorithm.

In order to convert the range measurements (original or retracked) to water levels serving as input for our Kalman filter approach numerous preprocessing steps are necessary. Eq. 1 summarizes the height computation from altimeter products (orbit height h_{sat} and (retracked) altimeter range r_{alt}). These processing steps have to be performed for each individual altimeter measurement. The derived normal heights h_{normal} serve as input for the DAHITI approach described in Section 3.

$$\begin{aligned}
 h_{normal} = & h_{sat} - r_{alt} - \\
 & \Delta h_{wet} - \Delta h_{dry} - \Delta h_{iono} - \\
 & \Delta h_{etide} - \Delta h_{ptide} - \\
 & \Delta h_{rad} - N
 \end{aligned} \tag{1}$$

First, the range has to be corrected for geophysical effects. For this purpose, the models and corrections given in Table 2 are applied. It is important to apply identical geophysical corrections for all missions and over the whole time period in order to avoid inconsistencies in the resulting multi-mission time series. To correct the wet (Δh_{wet}) and dry (Δh_{dry}) tropospheric delay, products of ECMWF for Vienna Mapping Function 1 (VMF1) (Boehm et al., 2009) are

used. The ionospheric delay Δh_{iono} is corrected by using the NOAA Ionospheric Climatology 2009 (NIC09) (Scharroo and Smith, 2010) model. The solid Earth tide and pole tide corrections ($\Delta h_{etide}, \Delta h_{ptide}$) are applied according to the IERS Conventions 2003 (McCarthy and Petit, 2004). Finally, each single altimeter measurement is corrected for its radial error Δh_{rad} in order to account for inter-mission biases. Radial errors are derived from a global multi-mission crossover analysis as described by Bosch et al. (2014). They are computed with the ocean products. Radial errors were interpolated over land to provide range bias corrections for each altimeter measurement over land. This approach works quite well as long as the ocean product is used for the computation of inland water levels. However, as soon as retracking is involved additional retracker offsets will occur. In order to minimize the relative offsets between different altimeter tracks, we use the same retracker for all measurements over one target. That minimizes the inter-mission biases which are shown later for selected results in Section 4.3 and allow us to use different altimeter missions as a single virtual altimeter system. The average values of the applied range errors are given in Table 1 for each altimeter mission. All data used in this study (the altimeter data as well as all corrections) are extracted from OpenADB^{c0}, the open altimeter database of DGFI-TUM. More information on OpenADB is given in Section 3.1. The quality of extracted geophysical corrections is checked and altimeter measurements are rejected if they do not comply with the valid ranges given in the mission handbooks.

For the computation of water level time series within the Kalman filter approach normal heights h_{normal} are used as input data, whereas altimetry provides ellipsoidal heights. However, ellipsoidal heights are purely geometrical and do not allow us to predict where the water will flow. We compute normal heights by subtracting a (quasi-)geoid model (N) from the ellipsoidal heights. For this purpose, the EIGEN-

^{c0}<http://openadb.dgfi.tum.de>

Table 2: List of applied models and geophysical corrections

Correction	Source/Model	Reference
Wet troposphere	ECMWF (2.5° x 2.0°) for Vienna Mapping Functions 1 (VMF1)	Boehm et al. (2009)
Dry troposphere	ECMWF (2.5° x 2.0°) for Vienna Mapping Functions 1 (VMF1)	Boehm et al. (2009)
Ionosphere	NOAA Ionosphere Climatology 2009 (NIC09)	Scharroo and Smith (2010)
Solid earth tide	IERS Convention 2003	McCarthy and Petit (2004)
Pole tide	IERS Convention 2003	McCarthy and Petit (2004)
Range Bias	MMXO14	Bosch et al. (2014)
Geoid	EIGEN-6C3stat	Förste et al. (2012)

6c3stat (Förste et al., 2012) model is used which supplements the EGM2008 geoid model with additional GOCE gravity data.

3 DAHITI Approach

In order to use altimeter measurements from different tracks and missions a consistent and reliable combination strategy is important. The irregular spaced observations from different locations must be merged into one time series per target and the optimal combination of measurements with different uncertainties must be ensured. This requirement is fulfilled by our DAHITI approach which is based on an extended outlier rejection and a Kalman filter for the estimation of water level time series.

The processing strategy for the estimation of water level time series over inland waters using the DAHITI approach is separated into three steps: preprocessing, Kalman filtering and postprocessing (cf. Figure 1). The preprocessing step includes all necessary tasks for the preparation of the input altimeter heights such as waveform retracking, applying range corrections, calculation of height errors, and rejection of outliers. In the Kalman filtering step, the computation of the water levels of the investigated water body is performed. In this paper, we apply Kalman filtering in a single location centred on the investigated water body and obtain one computed water level for each epoch. However, there is also an option for performing Kalman filtering on a grid which can be used for investigation of the surface variability of larger lakes.

In the postprocessing step, all water levels from the previous step are merged to form a single water level time series referring to one reference location if the Kalman filtering was performed on a grid. Subsequent outlier detection can be conducted if necessary. The final time series is stored in DAHITI, accessible via the website.

3.1 Preprocessing

The Open Altimeter Database (OpenADB) holds satellite altimeter data and derived high-level products. OpenADB provides satellite altimeter data, geophysical corrections, models, etc. which are also accessible via the website. All informa-

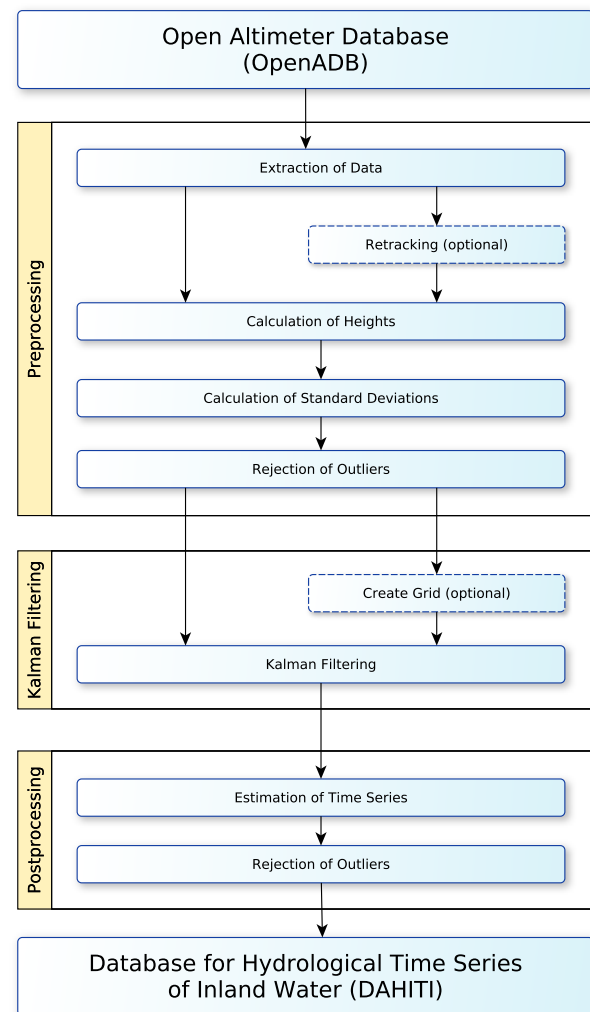


Figure 1: Processing strategy for the computation of water level time series for inland waters in DAHITI in three main steps: preprocessing, Kalman filtering, and postprocessing.

tion is stored in separate parameter files named Multi-Version-Al-

timetry (MVA) and can be individually combined to achieve water heights. The data sets from OpenADB used for this study and the methodology used to derive individual water levels are described in Section 2.

In addition to the normal heights of the water levels the Kalman filter requires information on the quality of each measurement. This information is used for the weighting of the individual data sets as well as for the error estimation of water level products. Because of the lack of absolute accuracy, the precision of the heights is computed by analysing the along-track scatter of the measurements.

For this purpose, an ‘absolute deviation around the median’ (ADM) is estimated by using a sliding box along the altimeter track. The size of the sliding box varies for large lakes ($\pm 3.5\text{km}$), small lakes/large rivers ($\pm 1.5\text{km}$) and smaller rivers ($\pm 0.5\text{km}$). The definition of the sliding box in kilometres instead of number of points allows consistent handling of missions with different data rates (10 Hz, 20 Hz, or 40 Hz) and ensures correct inter-mission weighting. The ADM is calculated by estimating a median of the water heights within the box. Then the median height is subtracted from the current water height and the absolute value of the difference is used as the ‘error’ of the altimeter measurement. Compared with estimated standard deviations, the ADM method is more robust against corrupted water heights and topography near shores and leads to more reliable errors as long as more than half of the altimeter measurements are over water.

Before Kalman filtering is performed various user-defined outlier rejections can be applied. Inaccurate water levels must be rejected before Kalman filtering; precise ones are used for the estimation of the resulting water levels. The following outlier criteria can be applied in the preprocessing step.

- Latitude thresholds
- Water height thresholds
- Height error (ADM) threshold
- Backscatter coefficient (Sigma0) thresholds
- Along-track outlier test (SVR)

It is important to note that the criteria for the outlier detection are very flexible and the optimal configuration strongly depends on the investigated water body. As a consequence, the parameters for outlier rejection vary with the study areas. First, three outlier criteria (latitude thresholds, water height thresholds and height error threshold) are applied. The backscatter coefficients of altimeter measurements provide information about the reflectance of the surface. This information can be used to reject altimeter measurements affected by ice. Moreover, outlier detection with Support Vector Regression (SVR) (Smola and Schölkopf, 2004) is implemented. This method applies linear regression to each altimeter track to reject altimeter measurements that do not represent the flat water level of the inland water target. SVR is

similar to common regression but is more flexible and robust. SVR is an advancement of the Support Vector Machine (SVM) (Boser et al., 1992) which is used as a classification algorithm for applications such as pattern recognition and machine learning. Depending on the mathematical problem, the kernel for the regression varies. One can use linear, polynomial or radial base functions (Smola and Schölkopf, 2004). In our case, SVR is applied on single altimeter tracks over an inland water body using a linear kernel and zero-slope constraint. Based on the constant representing the flat water level, an interval is defined which separates into valid and invalid data. Figure 2 shows an example of an altimeter track (Envisat, Pass 80, Cycle 007) crossing Lake Erie with an island in the middle. Blue dots indicate valid measurements, red dots indicate rejected data that exceed the ADM threshold of 5 cm (black dotted line), and green dots mean outliers detected by SVR (with rejection interval of ± 5 cm). The threshold of the SVR should be in the order of the noise of high-frequent altimeter measurements. One can see that all heights influenced by land contamination are detected as outliers and the remaining heights represent a flat surface.

3.2 Kalman Filtering

Kalman filtering is the central part of the computation of water level time series in DAHITI. The method of Kalman filtering is applied for the computation of water level time series in DAHITI. It updates a model by measurement data of different accuracies and predicts the current state to the next time epoch (Kalman, 1960). In contrast to the common least-squares adjustment the Kalman filter works recursively and the number of input observations per processing step is significantly reduced because of its sequential integration. This also enables real-time applicability.

The Kalman filter performs the estimation of water level time series from the track-wise input heights by combining time-dependent input data available at irregular intervals and –in the case of larger lakes– at different locations. Different modified Kalman filter approaches have been used for geodetic applications (e.g. Yang and Gao 2006, Eicker et al. 2014 and Gruber et al. 2014) In principle, this algorithm realizes a sequential least squares adjustment by taking into account the accuracies of the input data as well as the deterministic and stochastic behaviour of the system and produces a statistically optimal estimate of the water level time series.

3.2.1 Update Interval

The Kalman filter uses input observations to update the current state of the system and predict the model of the following time epoch. This is performed in a continuous loop consisting of two steps (an update and a prediction step) running consecutively for every period of time t_k . At the beginning, an initialization is necessary in order to set the starting conditions. The work flow is illustrated in Figure 3. The time

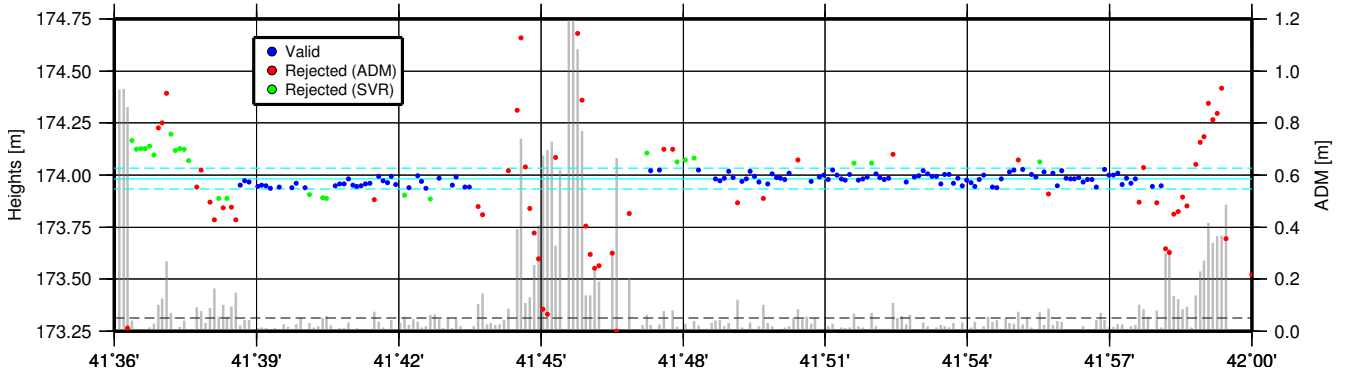


Figure 2: Example of an outlier detection using error threshold and SVR along a single satellite track over Lake Erie containing an island (between approx. $41^{\circ}44'$ and $41^{\circ}47'$). The result of the regression shows valid (blue) and rejected (red, green) water heights. The height errors based on ADM are plotted as grey bars. Thresholds for height errors and SVR are marked by dashed lines (black and cyan respectively).

increment of the Kalman filter can be defined arbitrarily. In our case an observation-based update interval instead of a constant one is used. That means that our system is updated each time a new altimeter track is available. Thus, the update interval strongly depends on the size and the data coverage of the investigated water body. It can vary between 35 days (if only an Envisat track crosses the target area) and one day (in the case of large lakes covered by different altimeter missions). Time intervals shorter than one day are precluded by assigning the individual measurements to full days. The use of an adaptive update interval avoids smoothing effects in the case of data gaps that may occur when a fixed time increment is selected.

3.2.2 Optional Computation Grid

All computations can be referred to one location (centre of the target) or performed on a computation grid. The latter is optional and can be applied for special investigations on surface variability of larger lakes. The standard solution -also used for all computations within this study- assumes uniform lake surfaces in balance with gravity and merges all water heights of one update step to one location. Surface differences owed to systematic height or geoid errors or hydrodynamic effects from wind and waves are neglected. In practice, our approach automatically creates a grid by means of a recursive algorithm used on an initial grid node as reference point. A land water mask provides information on the extent of the water body and the grid. The grid node separation can be chosen manually depending on the extent of the investigated inland water. Thus, normally we define only one grid node over the target. However, in cases where surface differences are expected, a smaller grid node distance can be chosen. The computations will then be performed for all grid nodes and different water levels for the whole lake surface.

3.2.3 Kalman Filter Equations

In the following, the basic equations of the Kalman filter are introduced. The algorithm consists of an observation model and a dynamic model.

The observations for each step k corresponding to epoch t_k are given in vector \mathbf{l}_k and its co-variances in matrix $\Sigma_{ll,k}$.

$$\mathbf{l}_k = \mathbf{A}_k \cdot \mathbf{x}_k - \mathbf{v}_k \quad (2)$$

$$\Sigma_{ll,k} = \mathbf{I} \cdot \mathbf{s}_{l,k} \quad (3)$$

The vector length of \mathbf{l}_k depends on the number of water levels m_k available at each epoch t_k . The unknown grid node heights are compiled in vector \mathbf{x}_k . For computations using the standard solution, the vector \mathbf{x}_k has the length of 1. The $m_k \times n$ design matrix \mathbf{A}_k is the core of the observation model and connects the water levels with the computation grid consisting of n grid points ($n = 1$ using only a single grid point). \mathbf{A}_k has a dimension of $m_k \times n$ and contains ones for those grid nodes where water levels are available. Hereby, each water level height is assigned to the nearest grid node. In the case when the computation is performed on a single grid node all water level heights are assigned to them, merged into it. The vector \mathbf{v}_k absorbs the residuals of the observation model.

The uncertainties of the water levels are described in $\Sigma_{ll,k}$. Since there is no information on correlation between individual water levels the matrix is defined as a diagonal matrix with variances σ_l^2 from ADM (computed in the preprocessing step) on the mean diagonal. These are collected in vector $\mathbf{s}_{l,k}$.

The dynamic model of the Kalman filter approach describes the transition of the system state from epoch t_k to

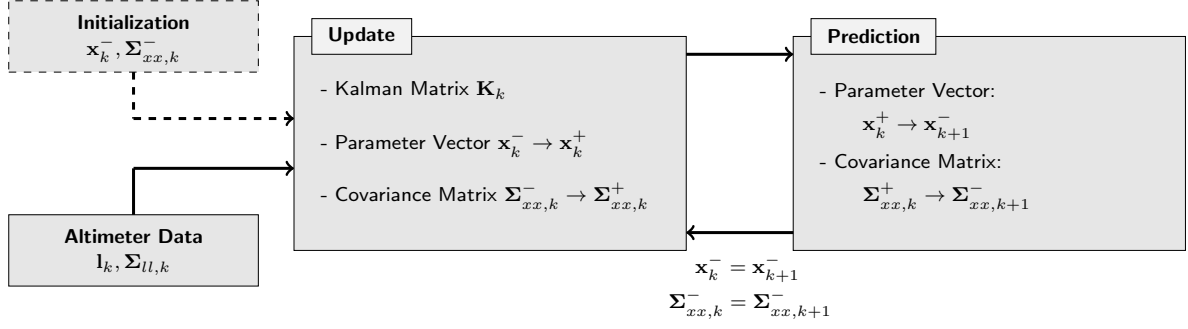


Figure 3: Procedure of Kalman filtering starting with an initialization step followed by a progressive loop containing one update and one prediction step.

550 t_{k+1} .

$$\mathbf{x}_{k+1}^- = \mathbf{\Phi}_k \cdot \mathbf{x}_k^+ + \mathbf{\Lambda}_k \cdot \mathbf{q}_k \quad (4)$$

$$\mathbf{\Sigma}_{xx,k+1}^- = \mathbf{\Phi}_k \cdot \mathbf{\Sigma}_{xx,k}^+ \cdot \mathbf{\Phi}_k^T + \mathbf{\Lambda}_k \cdot \mathbf{Q}_k \cdot \mathbf{\Lambda}_k^T \quad (5)$$

This includes the prediction step (cf. Figure 3) for the parameter vector \mathbf{x}_k^+ as well as for its covariance matrix $\mathbf{\Sigma}_{xx,k}^+$. The prediction of the grid node heights is done by the transition matrix $\mathbf{\Phi}_k$. In addition, system noise \mathbf{q}_k is taken into account and mapped to the grid node heights by $\mathbf{\Lambda}_k$. The model uncertainties are predicted by Eq. (5) where the covariance matrix \mathbf{Q}_k contains the uncertainties of the system disturbance, i.e. the system noise. Since no information on the temporal evolution of the water level is known in advance, the prediction is based purely on stochastic information. Moreover, the (deterministic) system disturbances in \mathbf{q}_k are set to zero. The system noise σ_q^2 in matrix \mathbf{Q}_k is assumed to yield 5 cm² for each grid node (without correlations) [because of the average noise of altimeter measurements](#).

The applied Kalman filter procedure as used in the DAHITI approach is described in detail below.

570 Initialization

The Kalman filter approach begins with an initialization step which is necessary before starting the recursive loop. The initial state vector \mathbf{x}_k^- is filled by setting all elements to the observed water level with the smallest height error in the first epoch t_k . The covariance matrix $\mathbf{\Sigma}_{xx,k}^-$ is initialized by an identity matrix of size $n \times n$.

Update

In the update step, new altimeter water levels are introduced in order to update the parameters of the current state \mathbf{x}_k^- to a new state \mathbf{x}_k^+ . The update is done by comparing the estimated observations (based on the current model, cf.

585 Eq. 2) with the water levels. The weighting of this so-called innovation is described by matrix \mathbf{K}_k . It can be computed based on the design matrix and the covariance matrices of observations and parameters using

$$\mathbf{K}_k = \mathbf{\Sigma}_{xx,k}^- \cdot \mathbf{A}_k^T \cdot (\mathbf{\Sigma}_{ll,k}^- + \mathbf{A}_k \cdot \mathbf{\Sigma}_{xx,k}^- \cdot \mathbf{A}_k^T)^{-1} \quad (6)$$

The parameter update of vector \mathbf{x}_k^+ describes the updated water levels for each grid node at the current epoch t_k .

$$\mathbf{x}_k^+ = \mathbf{x}_k^- + \mathbf{K}_k \cdot (\mathbf{I}_k - \mathbf{A}_k \cdot \mathbf{x}_k^-) \quad (7)$$

$$\mathbf{\Sigma}_{xx,k}^+ = (\mathbf{I} - \mathbf{K}_k \cdot \mathbf{A}_k) \cdot \mathbf{\Sigma}_{xx,k}^- \quad (8)$$

In parallel, the corresponding covariance matrix $\mathbf{\Sigma}_{xx,k}^+$ of the height estimates is updated using Eq. (8). The uncertainties of new altimeter data are taken into account by applying the Kalman matrix as weighting matrix. It can easily be seen that the parameter accuracies will become smaller within the updating step.

Prediction

After the parameter vector and the covariance matrix of the current epoch t_k have been updated, the prediction of \mathbf{x}_k^+ and $\mathbf{\Sigma}_{xx,k}^+$ to the next epoch t_{k+1} is performed and \mathbf{x}_{k+1}^- and $\mathbf{\Sigma}_{xx,k+1}^-$ are computed. The predictions are used as [startinitial](#) parameters for the next update step, and the computation loop then continues until all water levels have been processed. In our case, no additional information about the temporal propagation of the parameter vector and the covariance matrix is introduced. Therefore, no deterministic model is applied and the transition matrices $\mathbf{\Phi}_k$ for data and $\mathbf{\Lambda}_k$ for disturbances in Eq. (4) and (5) can be identity matrices. Furthermore, only system noise is taken into account by setting the disturbance value \mathbf{q}_k equal to zero and its uncertainties \mathbf{Q}_k to variances of 5 cm² for each grid node without any correlations.

3.3 Post-processing

The Kalman filter provides water heights x_k and their formal errors $\Sigma_{xx,k}$ for each epoch t_k and grid node.

If Kalman filtering is performed on a single grid node, the final water level and error are immediately available. If it is computed on a grid, a ‘mean’ one-dimensional time series is computed. Instead of simply averaging all grid node heights, we select only the best water levels per epoch. Only water levels are selected that which fulfill certain error criteria of Kalman filtering errors. In general, the limit for the maximum height error is set to values between 5 and 10 cm. The selected limit depends on the resulting height errors. Therefore, the limit is selected manually in such a manner that only reliable heights are used for the final time series. The remaining water levels are averaged for each epoch by using the formal errors for the weighting factors. Finally, a time series of water levels and their formal errors over the entire period of time are obtained.

In a last step, an outlier rejection is performed. The water level time series can still contain outliers because of bad quality of data, ice coverage, orbit manoeuvres, etc. For the detection of those outliers, SVR can be applied again - now on the full time series. Complete tracks showing significant differences with respect to the other points of the water level time series can be rejected. This time, radial base functions instead of a linear kernel are used to perform the regression since a constant water level over time cannot be assumed. The radial base function as-kernel of the SVR allows us to fit the time series including seasonal variations and trends. Figure 4 shows the results of an applied SVR on a six-year subset of the time series of Lake Erie. The fitted model of the SVR is plotted as a cyan line together with its manually defined confidence interval. The confidence interval is selected depending on the noise of the water level time series which varies between 7.5 cm and 100 cm. Water levels which fulfill the limit of the SVR are kept (blue) whereas outliers are rejected (red).

4 Results and Validation

In this chapter, water level time series resulting from the Kalman approach are presented and validated. Since it is not possible to show results for all inland water bodies we focus on the selected study areas introduced in Section 4.1. Three inland water targets are described in more detail. They represent different target types, i.e. large lakes, small lakes, and rivers. Moreover, results from 16 lakes and 20 river crossings are validated by comparison with in situ data and altimeter time series provided by other groups.

4.1 Study Areas

For altimetry-derived water level time series, in situ measurements from gauging stations are the most important val-

idation data sets. In order to perform reliable comparisons, only those inland water bodies are selected as study areas for which in situ data are available. Since we have access to many gauging stations in North and South America, we focus our study on these two continents.

Another criterion for the selection of inland water bodies is the availability of external altimetry-derived time series to demonstrate the performance of our Kalman filter method compared with other approaches. Each study case is observed by at least one other group (i.e. Hydroweb, River & Lakes or GRLM). Thus, those targets in North and South America are selected which are best represented by other inland altimetry databases for a time period as long as possible. We end up with the 16 lakes and 20 river crossings illustrated in Figure 5. For almost all investigated inland water bodies at least one in situ gauging station and one external altimetry-derived time series is available.

The first study areas are the Great Lakes of North America comprising Lake Superior (82,000km²), Lake Huron (59,000km²), Lake Michigan (58,000km²), Lake Erie (25,000km²), and Lake Ontario (19,000km²). The size of these lakes leads to ocean-like conditions which means that the altimeter measurements are not disturbed by land. Only a few altimeter measurements near the lake shore are contaminated by land. The Great Lakes show seasonal variations of about 1 m. They are well-observed inland waters with many in situ stations provided by the ‘Tides & Currents’ platform of the National Oceanic and Atmospheric Administration (NOAA)^{c1}. For the validation of Lake Superior, in situ stations of Duluth, Grand Marais, Marquette, Ontonagon and Point Iroquois are used. Lake Huron has five stations for validation which are Essexville, Harbor Beach, Lakeport, Mackinaw City, and de Tour Village. The stations Calumet Harbor, Holland, Kewaunee, Ludington, Milwaukee, and Port Inland are used for Lake Michigan. Lake Erie has seven stations for validation which are Buffalo, Cleveland, Fairport, Fermi Power Plant, Marblehead, Sturgeon Point, and Toledo. For validation of Lake Ontario, the in situ stations of Cape Vincent, Olcott, Oswego, and Rochester are used.

In addition to the Great Lakes, the Great Slave Lake (27,200 km²), Lake Winnipeg (24,000 km²), Lake Athabasca (7,800 km²), Lake Winnipegosis (5,100km²), Lake Manitoba (4,600 km²), Lake of the Woods (4,300 km²), Great Salt Lake (4,000 km²), Lake Claire (1,400 km²), and Cedar Lake (1,300 km²), which are located in Canada and the United States, are investigated. These lakes differ significantly in surface extent by up to a factor of up to 20. Estimation of water level time series in the Canadian lakes is made difficult by the winter conditions. Several lakes are frozen for several months which makes the water level computation challenging (Table 3). For validation of the water level time series,

^{c1}<http://tidesandcurrents.noaa.gov/>

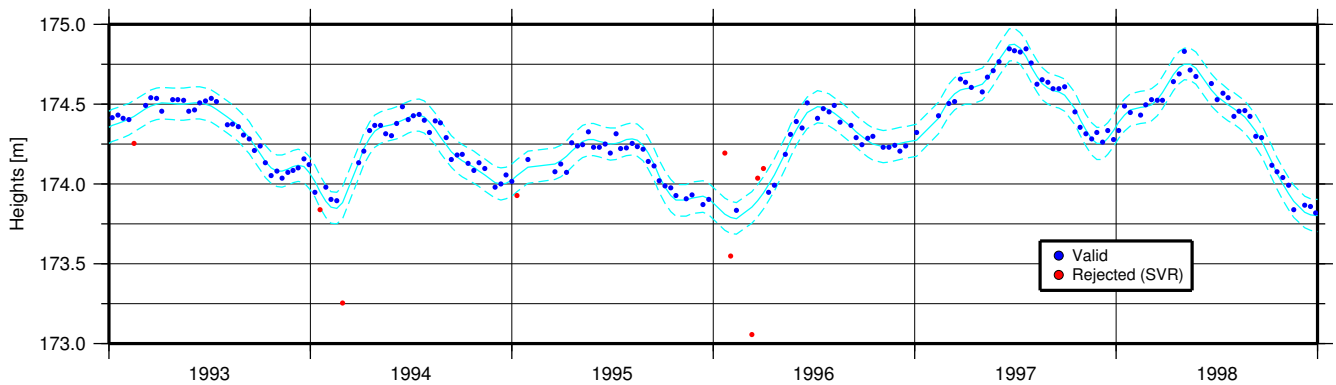


Figure 4: Example of applied SVR using radial base functions for outlier rejection on a resulting water level time series (Lake Erie) of the Kalman filtering step. The estimated regression function (cyan) and its confidence intervals (dotted cyan) are plotted. The result of the regression shows valid (blue) and rejected (red) altimeter heights. Each rejected water level height represents one complete satellite overflight.

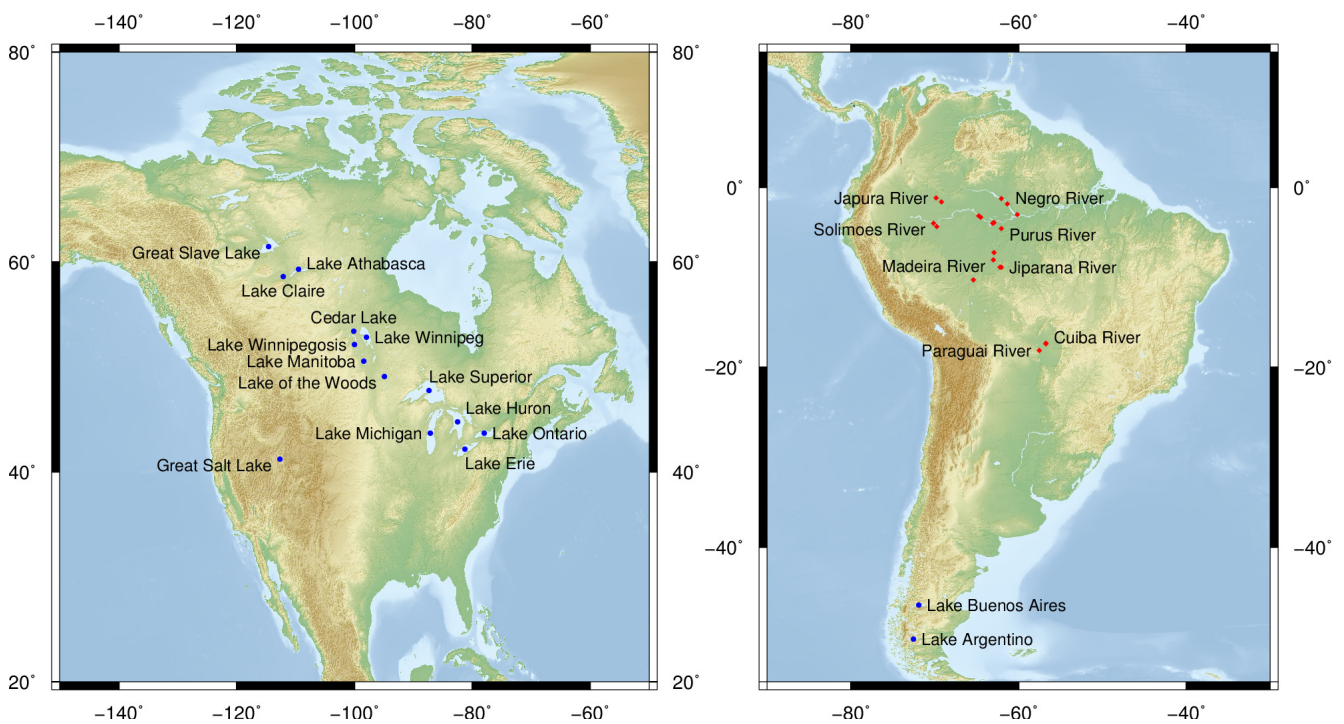


Figure 5: Map of selected study areas of lakes (blue) and rivers (red) in North America (left) and South America (right)

in situ data provided by the government of Canada^{c3} and the U.S. Geological Survey (USGS)^{c3} are used.

In addition to the lakes in North America, two lakes in the very south of South America are selected for validating

our approach. Lake Argentino (1,466 km²) and Lake Buenos Aires (1,850 km²) are located in Argentina next to the Andes. The lakes are partly surrounded by mountains, which can affect the altimeter measurements. The lakes have a similar shape with largest extent in across-track direction of the satellites ground track. This leads to rather short track crossings varying between 10 and 15 km. Despite their location

^{c3}<http://wateroffice.ec.gc.ca/>

^{c3}<http://waterdata.usgs.gov/>

in a temperate zone near high mountains, the lakes are not frozen during winter. The seasonal variations of both lakes vary between 2.5 m and 3.5 m. For validation of Lake Argentino and Lake Buenos Aires, in situ data from the Ministerio de Planificación Federal, República Argentina^{c2} are used.

For the analysis of rivers, the Amazon basin is selected as the study area; it is the largest basin in the world and covers about 7,000,000 km². The region is located in the tropics, and the climate is hot and humid throughout the year. Because of the strong precipitation, the resulting seasonal variations of the water level reach peak-to-peak annual variations up to 15 m. The Amazon basin consists of countless rivers which differ in terms of length, width, meanders, and seasonal variations. This variety is very useful for the quality assessment of water level time series from altimetry. For example, the river widths vary from up to 10 km for the Amazon river and to a few hundred metres for the Jiparaná River. Moreover, the Amazon basin is a well-observed area since the Agência Nacional de Águas (ANA)^{c2} provides data for numerous in situ gauging stations. For the validation, water level time series of gauges at the Japurá River, the Solimões River, the Negro River, the Purus River, Jiparaná River, Paraguai River, and the São Lourenço River are used. Another reason why we chose the Amazon basin is that other groups such as LE-GOS and ESA-DMU have also investigated this area.

4.2 Validation data sets

Water level time series from gauges have a high relative accuracy, but some points must be borne in mind in the use of in situ data. The absolute comparison of heights from gauges and satellite altimetry is often very difficult since location, reference height and vertical datum of gauges are not always precisely known or may even be unknown. This leads to height offsets between water level time series from gauge and altimetry which must be considered in the validation step. In particular, the comparison between water levels from altimetry and in situ data over rivers shows in most cases remaining offsets. In general, almost no altimeter satellite track crosses the river at the location of a gauging station, which leads to additional offsets because of the river slope. To avoid handling the uncertainties of in situ data only relative comparisons with water level time series from altimetry are performed.

In order to rank our results with respect to other time series derived from altimeter data, we download water levels from three external inland altimeter data bases, namely Hydroweb, River & Lakes, and GRLM. These results are based on various altimeter missions and diverse approaches were performed to compute the water level time series. As a consequence, these external time series cover different time

periods with temporal resolutions between 10 and 35 days. This has to be kept in mind when the different time series of the four databases are compared.

4.3 Selected Results

We choose three of the aforementioned water bodies in order to present detailed results of our DAHITI approach. The targets are selected to represent three diverse inland water body types featuring different characteristics. Lake Superior (Figure 6) is selected as representative of larger lakes with ocean-like conditions. Lake Athabasca (Figure 7) is a smaller lake which has to cope with ice coverage in winter, which is the case for most lakes in North America. Finally, the Madeira River (Figure 8) in the Amazon basin is selected to show the potential of the DAHITI approach for river monitoring. For all examples, the time series from DAHITI is compared with in situ data and results from Hydroweb, River & Lakes, and GRLM.

4.3.1 Lake Superior

Figure 6 shows the water level time series of Lake Superior between 1992 to 2014. The DAHITI result is plotted in blue (subplot a), the in situ data of station Ontonagon in red, and external altimetry-derived water levels in green (Hydroweb, subplot b), light blue (River & Lakes, subplot c), and orange (GRLM, subplot d). In order to neglect constant offsets between the different solutions, all time series are shifted to the level of in situ data, and only water level changes are compared. The applied offset is estimated by using the average of height differences at all days in which in situ data and time series from altimetry are available. Additionally, differences between water levels from altimetry and in situ data are plotted for each time series. For the DAHITI computation, non-retracked high-frequent altimeter data of Topex, Jason-1, Jason-2, Envisat, ERS-2, and SARAL/AltiKa are used. An additional retracking is not applied. The Kalman filter provides a continuous time series with an irregular near-daily resolution which shows neither outliers nor inter-mission inconsistencies. In order to achieve reliable water level time series different outlier criteria are applied. Initially, the number of invalid water levels is reduced by using thresholds for latitude (depending on track length over Lake Superior), height (180 m to 185 m) and height error (10 cm). Furthermore, only backscatter coefficients between 10 db and 18 db are selected in order to reject data affected by ice coverage. Then, an SVR using a confidence limit of ± 5 cm is applied along the crossing altimeter track to reject water levels near the shore which are affected by land contamination. Finally, an SVR using a confidence limit of ± 7.5 cm is applied along the final water level time series to reject remaining outliers. Altogether, the time series is composed of 3449 single points, each representing one day with at least one altimeter track crossing the

^{c2}<http://www.hidricosargentina.gov.ar/>

^{c2}<http://ana.gov.br/>

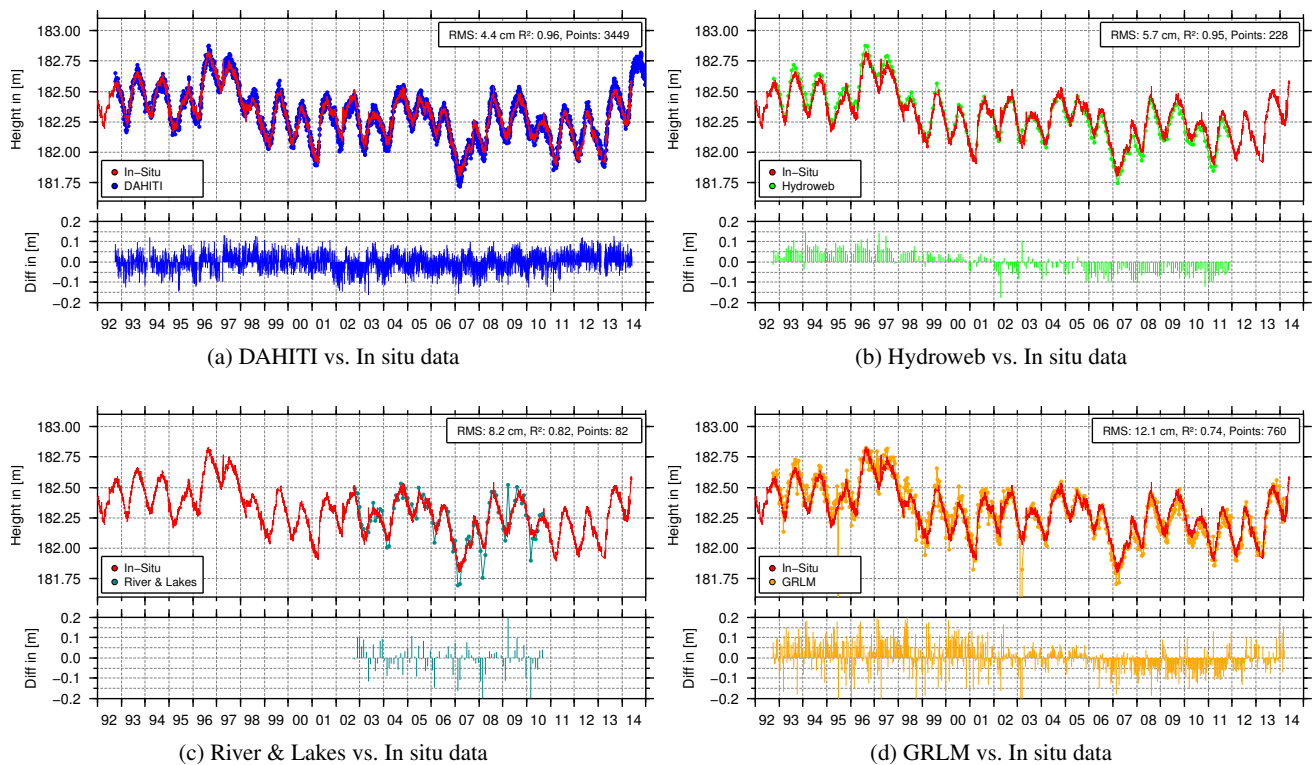


Figure 6: Water level time series of Lake Superior from DAHITI (1992–2014), Hydroweb (1992–2011), River & Lakes (2002–2010) and GRLM (1992–2014) compared with in situ data (Ontonagon, 1992–2014) and shifted to the water level height of the in situ data. Additionally, differences between heights from altimetry and in situ data are plotted for periods in which both data sets are available.

lake. During computation of the final water level time series 24 % of the data are rejected, mostly because of ice coverage.

The DAHITI water levels coincide very well with the daily in situ data of Ontonagon. The correlation coefficient R^2 is 0.96 and the RMS difference show is 4.4 cm. The alternative computation of the water level time series using a median filter instead of the Kalman filter leads to a slightly worse RMS difference of 4.5 cm (see Section 4.3.4). In comparison with the DAHITI time series, the other altimetry-derived water levels show significantly reduced temporal resolutions. In addition, the lengths of the time series differ, depending on the missions used by the different groups. In order to rank the DAHITI result compared with other altimetry-derived water levels, we also compare the three external time series with in situ gauging data within the corresponding time intervals. For all three databases this gives smaller correlations and higher RMS (Hydroweb: RMS=5.7 cm, R^2 =0.95, 228 points, River & Lakes: RMS=8.2 cm, R^2 =0.82, 82 points, and GRLM: RMS=12.1 cm, R^2 =0.74, 760 points). For validation, water level time series of the other altimetry-derived water levels are used as they are, without any additional outlier rejection. This leads to higher RMS differences as published in Ričko et al. (2013), who applied an additional outlier rejection

based on in situ data. The altimetry derived-solutions differ because of varying input data sets and the different approaches. Hydroweb uses a multi-mission approach with a merged monthly resolution whereas River & Lakes relies purely on Envisat with a temporal resolution of 35 days. GRLM applies a multi-mission approach providing a temporal resolution of about 10 days. The time series of Hydroweb and GRLM still show mission-dependent offsets which can be seen in the differences from the in situ data (mainly positive for ERS-2, mainly negative for Envisat). In contrast, mission-dependent offsets are quite small in the water level time series of DAHITI.

4.3.2 Lake Athabasca

Figure 7 shows the water level time series of Lake Athabasca between 1992 and 2014. Once again, water levels from DAHITI (blue), in situ data of Crackingstone Point (red), Hydroweb (green), River & Lakes (light blue), and GRLM (orange) are plotted. The time series of the four altimeter data bases are shifted to the level of the in situ data. In principle, Lake Athabasca, whose surface covers 7,800 km², should be large enough to provide reliable altimetry-derived water level

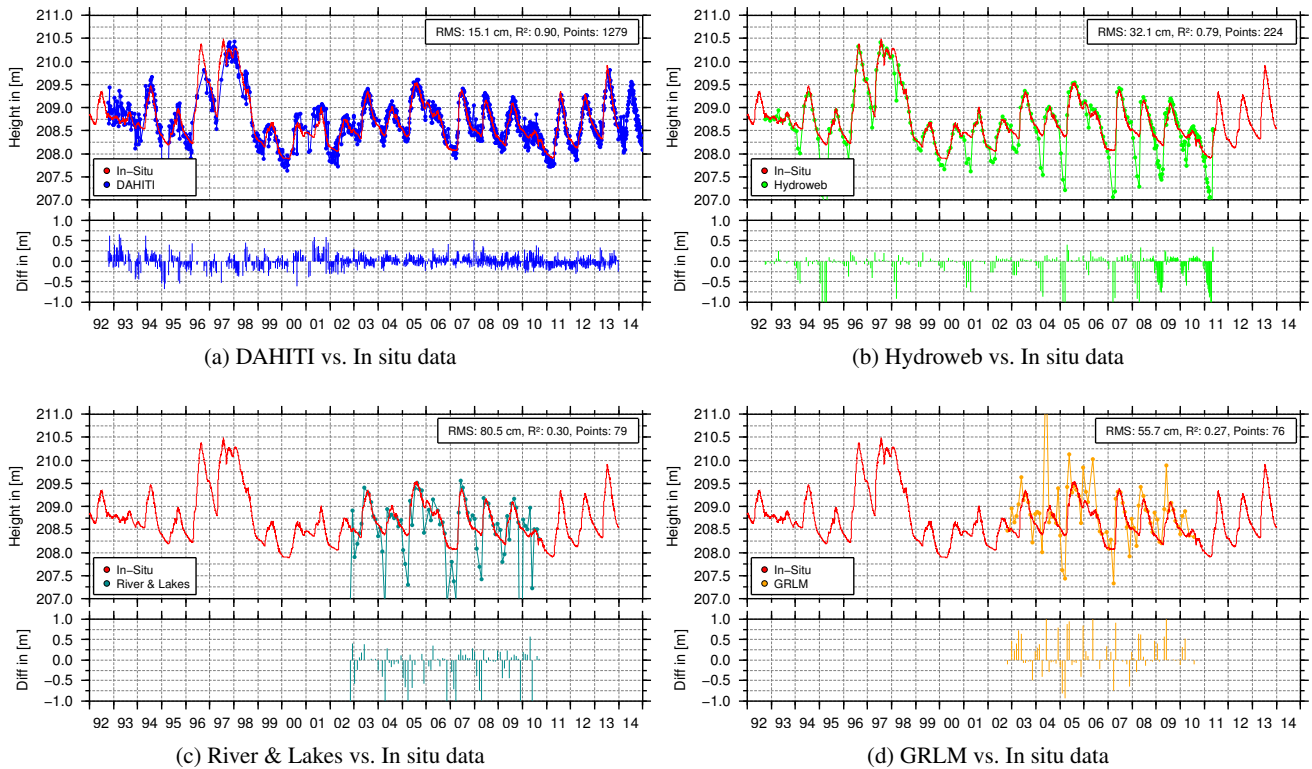


Figure 7: Water level time series of Lake Athabasca from DAHITI (1992–2014), Hydroweb (1992–2011), River & Lakes (2002–2010) and GRLM (2002–2014) compared with in situ data (Lake Athabasca, 1992–2013) and shifted to the water level height of the in situ data. Additionally, differences between heights from altimetry and in situ data are plotted for periods in which both data sets are available.

time series. However, different problems such as ice coverage because of regular freezing in winter, land contamination and off-nadir effects near lake shores have to be considered. For the estimation of the water level time series in DAHITI retracked altimeter data are used, with a 10% Improved Threshold retracker (Hwang et al., 2006). For the computation, altimeter data of Topex, Jason-1, Jason-2, Envisat, ERS-2 and SARAL/AltiKa are used. In order to achieve reliable water level time series, the same outlier criteria as for Lake Superior but different thresholds are applied. First, outliers are rejected by using thresholds for latitude (depending on track length over Lake Athabasca), height (208 m to 212 m) and height error (50 cm). Furthermore, water levels affected by ice coverage are rejected if the valid backscatter coefficients are not between 10 db and 18 db. To reject water levels near the shore which are affected by land contamination, an SVR along the crossing altimeter track using a confidence limit of ± 5 cm is applied. Finally, an SVR along the final water level time series using a confidence limit of ± 50 cm is applied to reject remaining outliers.

The DAHITI water level shows a very good agreement with in situ data in summer and almost no outliers owed to ice coverage are visible in winter compared with time se-

ries from Hydroweb and River & Lakes. The overall consistency with the gauge data yields a correlation coefficient of 0.90 and an RMS difference of 15.1 cm using 1279 points in the period between 1992 and 2014. The usage of a median filter leads to slightly worse RMS differences of 15.3 cm for Lake Athabasca. The differences between in situ data and Hydroweb (RMS=32.1 cm, R²=0.79, 224 points), River & Lakes (RMS=80.5 cm, R²=0.30, 79 points) and GRLM (RMS=55.7 cm, R²=0.27, 76 points) show higher RMS values and smaller correlations. One can clearly see that the problems of altimeter time series occur mostly in winter because of ice coverage. In particular, water level time series of Hydroweb and River & Lakes show strong outliers in winter which are not contained in the time series of DAHITI because of the applied outlier rejection. A new problem with retracker biases arises for time series based on retracked altimeter data. To minimize those effects all altimeter measurements are retracked using [with the](#) 10% Improved Threshold retracker. However, small retracker biases can also occur if identical retracking algorithms are applied on altimeter missions measuring in different bands such as Ku-band (Envisat) and Ka-band (SARAL/AltiKa).

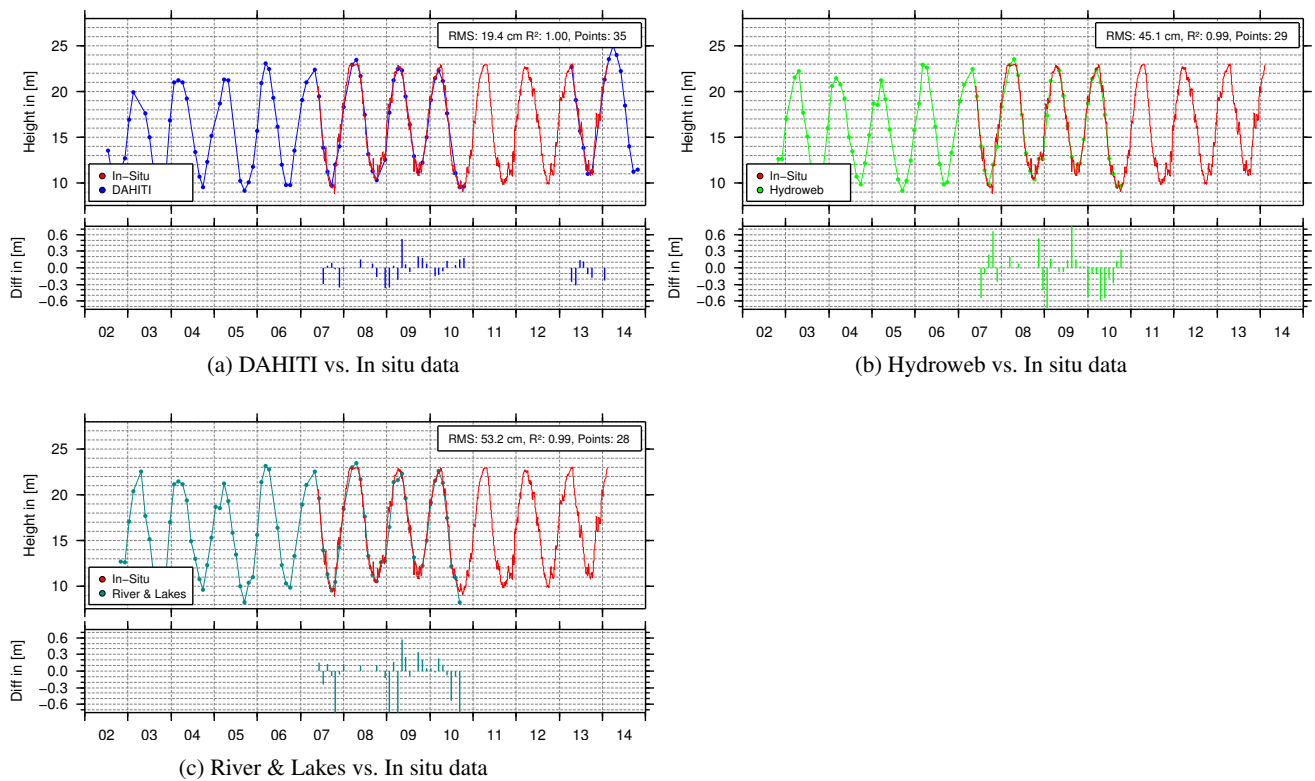


Figure 8: Water level time series of the Madeira River from DAHITI (2002-2014), and River & Lakes (2002-2010) compared with in situ data (Humaitá, 2007-2014) and shifted to the water level height of the in situ data. Additionally, differences between heights from altimetry and in situ data are plotted for periods in which both data sets are available.

4.3.3 Madeira River

Figure 8 shows the resulting water level derived from an Envisat and SARAL/AltiKa crossing over the Madeira River. The water level time series from DAHITI (blue), Hydroweb (green) and River & Lakes (light blue) are compared with the in situ station Humaitá (red), which is located about 27.6 km upstream. All time series from altimetry are shifted to the water level of the in situ station. At this location the Madeira River is about 2.5 km wide. In order to achieve reliable water level time series over the Madeira River different outlier criteria are applied. First, thresholds for latitude (depending on track length over the Madeira River), height (30 m to 50 m) and height error (100 cm) are applied to reduce the number of invalid water levels. Finally, an SVR along the crossing altimeter track using a confidence limit of ± 10 cm and an SVR along the final water level time series using a confidence limit of ± 100 cm are applied to reject remaining outliers. In this case, no limit for the backscatter coefficients is applied because no ice coverage exists in the Amazon basin. In principle, the backscatter coefficient can also be used to distinguish between water and land but this is not considered here. All altimeter time series reach a temporal resolution of about one month since there is only one mission with 35-day tempo-

ral resolution at the same time. Altimeter data are available between 2002 and 2014 with a data gap between October 2010 and March 2013. The altimeter data from Envisat on the shifted orbit can not be used between October 2010 and April 2012 for the current water level time series. Gauging information does not start before 2007. Thus, the comparison with in situ data only comprises a time period of about 3.5 years. For DAHITI another year of SARAL/AltiKa data is available. The Kalman filter result (blue) shows an RMS difference of 19.4 cm and a correlation coefficient of 1.00 by using 35 points. The estimation of the water level time series using a median filter leads to RMS difference of 19.6 cm. The RMS is comparable to the result for Lake Athabasca, which is even more satisfactory when we take into account the seasonal variations of about 15 m of the Madeira River. The high amplitude is also the reason for the extremely high correlation, which should not be overvalued. The RMS differences of Hydroweb and River & Lakes with respect to the gauge are twice as great, at 45.1 cm (Hydroweb, 29 points) and 53.2 cm (River & Lakes, 28 points) respectively. GRML does not provide information for this virtual station.

4.3.4 Discussion

The DAHITI time series show good consistency with in situ observations and clear advances over established approaches. However, some problems remain, especially for smaller lakes and rivers. For larger lakes, the assumption of a uniform surface level may no longer be justified. In addition to height differences owed to systematic errors in geophysical corrections or the geoid, hydrodynamic effects caused by wind and waves can cause horizontal lake level differences. Currently, these are neglected when combine observations from diverse parts of the lake. Moreover, measurements (altimetry as well as in situ) feature **unequalnon-uniform** accuracies observed over areas with different surface conditions. This effect can be seen when we compare the DAHITI water level time series of Lake Superior with additional gauging stations. The five possible comparisons lead to RMS differences varying by 2 cm (between 4.4 cm and 6.6 cm; Table 4). The two stations Duluth and Point Iroquois show reduced consistency with altimetry. Both stations are located in smaller bays of the lake and are more affected by wind and waves than the other stations, which leads to more noisy in situ time series.

For small lakes and rivers, land contamination of waveforms is the largest problem because nearly all altimeter measurements are affected. For rivers, almost no nadir measurements may occur and even these can originate from river branches and distort the water level time series from the investigated target. Moreover, the river slope can influence the time series, as well as the comparison with in situ data. The crossings between river and altimeter track can vary slightly (up to 1 km) because of orbit instabilities so that the reflections originate from different areas which do not exhibit the same water level. The most important challenge remaining is the handling of inter-mission biases and retracker biases. The usage of radial errors from a global crossover analysis and the restriction to one common retracker works reasonably well; however, small discrepancies remain in the time series. Moreover, the quality of the single altimeter measurements could surely be further improved by combining different retracking algorithms depending on the waveform shapes. This remains a major challenge and offers enormous potential for future work.

The validation of water level time series of DAHITI for Lake Superior, Lake Athabasca, and the Madeira River compared with in situ data and time series from Hydroweb, River & Lakes, and GRML showed clear improvements. To evaluate the impact of the outlier rejection and Kalman filtering on the improvements of the DAHITI time series, an alternative approach using a simple median filter instead of a Kalman filter was applied.

The resulting RMS differences for three inland waters decreased slightly by 0.1 cm to 0.2 cm, which indicates that the combination strategy has only a moderate effect on the overall accuracy. The strongest improvements are currently owed to rigorous outlier detection and data retracking. However,

the Kalman filter has a considerable potential when upgraded by dynamic modelling and used for real-time applications.

4.4 Quality Assessment

The results for Lake Superior, Lake Athabasca, and the Madeira River presented in Section 4.3 already show the ability of the DAHITI approach to provide reliable and highly accurate time series of inland water levels. Since three results – even if they do represent different inland water types – are not enough to perform a reliable quality assessment of the method, we extend the validation to a larger sample and include all study targets (16 lakes and 20 river crossings) described in Section 4.1 in the comparison.

Table 3 gives an overview of the different parameters used for the estimation of water level time series in DAHITI. This information is provided for all investigated lakes and rivers. ~~First, the used altimeter missions are shown~~The first column shows the used altimeter missions, followed by the re-tracking flag which indicates if additional retracking is applied. Then the ice flag shows if the water body is affected by ice coverage in winter. This information originates from external sources, e.g. National Snow and Ice Data Center (<http://nsidc.org/>) for Lake Superior. Table 3 also shows which outlier criteria were applied for the different inland water targets to reject erroneous water levels. Consequently, appropriate thresholds for latitude, height, backscatter coefficient, height error, SVR along the pass and along the final time series can be selected. Finally, the number of data points of the water level time series are shown which is equal to the number of days in which altimeter data are available. The last column describes the percentage of outliers which were rejected during the computation of the water level time series. Especially, for inland water bodies which are ice-covered in winter, the percentage of outliers strongly have increased.

Table 4 summarizes the comparisons of lake level time series from DAHITI, Hydroweb, River & Lakes, and GRML with in situ gauge data. For each target, RMS difference, squared correlation coefficient and the number of points (No) used for validation are provided. Depending on the availability of in situ time series of the investigated water body, more than one comparison is performed for the larger lakes. The smallest RMS difference for each target is highlighted in bold, the largest one in italics.

DAHITI results show RMS differences with respect to the gauge data between 4 cm and 36 cm. It is obvious that accuracy declines with lake extent and ice coverage. For some lakes, the differences between DAHITI and in situ data vary by more than a factor of two with different lake gauges. Especially for Lake Erie the difference between the RMS values can reach up to 8.1 cm. For most lakes, the relations between the different RMS values are similar for the different altimeter products.

For most lakes the DAHITI water levels are more consistent with in situ data than the results from external altimeter

Table 3: Relevant parameters for the estimation of the water level time series for DAHITI. This table shows information about the used altimeter missions for selected lakes and rivers, applied retracking (Retr.), ice coverage (Ice), and applied outlier criteria which are used for the processing of water level time series. Finally, the number of data points and percentage of outliers of the final water level time series are given.

Target name (DAHITI Id)	Used Missions						Retr.	Ice	Applied Outlier Criteria						Data Points	Outlier
	TP	J1	J2	E2	EN	SA			Lat.	Height	Sig.0	Error	SVR Pass	SVR Series		
Superior, Lake (3)	✓	✓	✓	✓	✓	✓	–	✓	✓	✓	✓	✓	✓	✓	3614	24 %
Huron, Lake (33)	✓	✓	✓	✓	✓	✓	–	✓	✓	✓	✓	✓	✓	✓	2132	23 %
Michigan, Lake (11)	✓	✓	✓	✓	✓	✓	–	✓	✓	✓	✓	✓	✓	✓	2132	37 %
Erie, Lake (6)	✓	✓	✓	✓	✓	✓	–	✓	✓	✓	✓	✓	✓	✓	1968	41 %
Ontario, Lake (35)	✓	✓	✓	✓	✓	✓	–	✓	✓	✓	✓	✓	✓	✓	2174	29 %
Athabasca, Lake (100)	✓	✓	✓	✓	✓	✓	✓	✓	✓	✓	✓	✓	✓	✓	1398	45 %
Great Slave, Lake (99)	✓	✓	✓	✓	✓	✓	–	✓	✓	✓	✓	✓	✓	✓	1396	39 %
Claire, Lake (578)	–	✓	✓	–	✓	✓	✓	✓	✓	✓	✓	✓	✓	✓	593	23 %
Winnipeg Lake (101)	–	–	✓	–	✓	✓	✓	✓	✓	✓	✓	✓	✓	✓	816	13 %
Manitoba, Lake (191)	–	✓	✓	–	✓	✓	✓	✓	✓	✓	✓	✓	✓	✓	535	4 %
Cedar, Lake (200)	✓	✓	✓	–	✓	✓	–	✓	✓	✓	✓	✓	✓	✓	647	18 %
Winnipegosis, Lake (281)	–	✓	✓	–	✓	✓	✓	✓	✓	✓	✓	✓	✓	✓	529	20 %
Lake of the Woods (73)	✓	✓	✓	–	✓	✓	✓	✓	✓	✓	✓	✓	✓	✓	687	49 %
Great Salt, Lake (72)	–	–	–	✓	✓	✓	✓	–	–	–	–	–	–	–	147	9 %
Argentino, Lake (182)	✓	✓	–	✓	✓	✓	–	–	–	–	–	–	–	–	880	49 %
Buenos Aires, Lake (139)	–	–	–	–	✓	✓	–	–	–	–	–	–	–	–	116	3 %
Solimões, River (405)	–	–	✓	–	✓	✓	✓	–	✓	✓	–	✓	✓	–	323	3 %
Solimões, River (406)	–	–	–	–	✓	✓	✓	–	✓	✓	–	✓	✓	–	90	12 %
Solimões, River (389)	–	–	–	–	✓	✓	✓	–	✓	✓	–	✓	✓	–	86	12 %
Solimões, River (581)	–	–	✓	–	–	–	–	–	–	–	–	–	–	✓	178	26 %
Solimões, River (384)	–	–	–	–	✓	–	–	–	–	–	–	–	–	–	82	0 %
Solimões, River (582)	–	–	✓	–	–	–	–	–	–	–	–	–	–	–	198	17 %
Purus, River (583)	–	–	–	–	✓	✓	✓	–	–	–	–	–	–	–	86	10 %
Jiparaná, River (584)	–	–	–	–	✓	✓	✓	–	–	–	–	–	–	–	91	9 %
Jiparaná, River (585)	–	–	✓	–	–	–	–	–	–	–	–	–	–	✓	235	2 %
Japurá, River (579)	–	–	–	–	✓	✓	✓	–	–	–	–	–	–	–	99	0 %
Japurá, River (580)	–	–	–	–	✓	–	–	–	–	–	–	–	–	–	81	2 %
São Lourenço, River (1093)	–	–	✓	–	–	–	–	–	–	–	–	–	–	✓	233	3 %
São Lourenço, River (1094)	–	–	✓	–	–	–	–	–	–	–	–	–	–	✓	232	3 %
Madeira, River (371)	–	–	–	–	✓	✓	✓	–	–	–	–	–	–	✓	90	10 %
Madeira, River (360)	–	–	✓	–	–	–	–	–	–	–	–	–	–	✓	227	5 %
Madeira, River (575)	–	–	–	–	✓	–	–	–	–	–	–	–	–	–	81	4 %
Negro, River (161)	–	–	–	–	✓	✓	✓	–	–	–	–	–	–	–	89	13 %
Negro, River (352)	–	–	–	–	✓	✓	✓	–	–	–	–	–	–	–	99	2 %
Negro, River (346)	–	–	–	–	✓	–	–	–	–	–	–	–	–	–	81	2 %
Paraguai, River (1095)	–	–	–	–	✓	✓	✓	–	–	–	–	–	–	–	99	0 %

Missions: Topex/Poseidon (TP), Jason-1 (J1), Jason-2 (J2), ERS-2 (E2), Envisat (EV), SARAL/AltiKa (SA)

1070 data bases. In addition, the temporal resolutions of the time
series are significantly higher, as indicated by the number of 1090
points used for validation. Of course, the different time pe-
riods of the other altimeter data sets have to be taken into
account, too. The most notable improvements through the
1075 DAHITI approach with respect to the existing databases can
be seen for smaller lakes. For example, for the Lake of the 1095
Woods, the DAHITI consistency with in situ data is more
than twice as good as the other altimeter products, improv-
ing the RMS differences from about 36 cm to approximately
1080 16 cm.

The validation results for different rivers in the Amazon 1100
basin are summarized in Table 5. We study eight different
rivers with 20 virtual stations altogether. For the compu-
tation, data from Jason-2, Envisat, and SARAL/AltiKa are
1085 used. Most of the time series are based on only one altime-
ter track (sometimes from consecutive missions, e.g. Envisat 1105
and SARAL/AltiKa). Few locations allow use of more than
one track in case of a crossover point between different al-

timeter tracks. Table 5 shows the comparison results of three
altimeter products (DAHITI, Hydroweb, and River & Lakes)
with different in situ stations. GRLM does not provide river
level time series and is excluded from this investigation. In
addition to RMS differences with respect to the gauging
time series and correlation coefficients, the number of data
points, river width and distance between altimeter crossing
and gauge are given. The river width corresponds to altime-
ter track length crossing the river based on satellite images
from Google Maps. Positive distances indicates downstream
gauges, negative differences indicate upstream gauges.

The RMS differences between altimeter time series and
in situ data vary between 8 cm and 114 cm in the case of
DAHITI. For most virtual stations, the consistency with the
gauge is considerably lower than for lakes. It is not possi-
ble to prove a dependence between river width and distance
to the gauge, not only because of the altimeter time series
but also because of the accuracies of the in situ data which
also contain measurement errors. Also, the angle in which

Table 4: Water level time series of selected lakes and reservoirs from DAHITI, Hydroweb, River & Lakes and GRLM compared with in situ data. For each comparison of water level time series from altimetry with in situ data an RMS difference and squared correlation is computed. The number of points from the final water level time series which were used for the validation is given in the third column (No) of each altimeter dataset.

Lake name - Station name - (DAHITI ID)	DAHITI			Hydroweb			River & Lakes			GRLM		
	RMS [cm]	R ²	No	RMS [cm]	R ²	No	RMS [cm]	R ²	No	RMS [cm]	R ²	No
Superior - Duluth ¹ (3)	5.4	0.92	3485	6.6	0.92	229	9.3	0.73	82	12.4	0.72	767
Superior - Grand Marais ¹ (3)	4.4	0.95	3483	5.2	0.95	279	8.5	0.80	82	11.8	0.75	767
Superior - Marquette ¹ (3)	4.8	0.94	3485	5.5	0.95	229	8.5	0.80	82	11.9	0.75	767
Superior - Ontonagon ¹ (3)	4.4	0.95	3449	5.7	0.95	228	8.2	0.82	82	12.1	0.74	760
Superior - Point Iroquois ¹ (3)	6.6	0.84	2619	6.5	0.84	141	9.5	0.75	82	12.4	0.62	510
Huron - Essexville ¹ (33)	9.1	0.93	2048	11.2	0.93	230	8.9	0.80	76	11.5	0.90	772
Huron - Harbor Beach ¹ (33)	5.2	0.98	2049	7.7	0.97	230	6.4	0.89	76	6.8	0.96	773
Huron - Lakeport ¹ (33)	6.3	0.96	1960	8.4	0.96	215	7.2	0.86	75	7.6	0.95	737
Huron - Mackinaw City ¹ (33)	4.9	0.97	1925	6.2	0.98	208	6.7	0.88	75	7.7	0.94	711
Huron - De Tour Village ¹ (33)	4.7	0.98	2007	6.9	0.98	222	6.2	0.89	76	6.9	0.96	749
Michigan - Calumet Harbor ¹ (11)	7.6	0.95	2045	10.5	0.94	228	7.5	0.87	76	8.7	0.94	765
Michigan - Holland ¹ (11)	5.6	0.91	1464	7.2	0.84	131	5.3	0.93	76	8.3	0.82	481
Michigan - Keweenaw ¹ (11)	5.4	0.92	1403	6.7	0.86	124	5.0	0.94	73	8.7	0.80	459
Michigan - Ludington ¹ (11)	5.4	0.93	1448	6.8	0.85	124	5.0	0.94	73	8.7	0.80	459
Michigan - Milwaukee ¹ (11)	5.9	0.97	2075	8.8	0.96	230	5.3	0.93	78	8.4	0.95	774
Michigan - Port Inland ¹ (11)	5.8	0.91	1448	7.4	0.83	130	6.1	0.91	69	10.1	0.74	480
Erie - Buffalo ¹ (6)	11.5	0.79	1892	16.4	0.72	221	17.2	0.50	81	18.7	0.61	714
Erie - Cleveland ¹ (6)	5.9	0.94	1859	9.0	0.92	213	13.2	0.70	81	13.6	0.78	136
Erie - Fairport ¹ (6)	5.2	0.95	1858	8.6	0.93	213	12.6	0.74	81	13.5	0.79	694
Erie - Fermi Power Plant ¹ (6)	10.5	0.84	1819	14.9	0.78	212	15.3	0.63	81	17.0	0.70	693
Erie - Marblehead ¹ (6)	8.8	0.88	1827	13.4	0.81	210	15.3	0.62	80	15.9	0.73	684
Erie - Sturgeon Point ¹ (6)	10.3	0.83	1870	14.8	0.77	218	16.3	0.55	80	17.5	0.65	706
Erie - Toledo ¹ (6)	13.3	0.77	1888	18.6	0.69	220	17.2	0.57	81	19.5	0.64	714
Ontario - Cape Vincent ¹ (35)	5.3	0.96	2089	6.5	0.95	227	4.5	0.97	75	10.8	0.85	729
Ontario - Olcott ¹ (35)	4.5	0.97	1976	6.1	0.96	210	4.9	0.96	72	11.0	0.85	681
Ontario - Oswego ¹ (35)	5.2	0.96	2098	6.6	0.95	229	4.6	0.97	75	10.8	0.85	732
Ontario - Rochester ¹ (35)	4.6	0.97	2099	6.1	0.96	229	4.4	0.97	75	10.8	0.85	732
Athabasca - Crackingstone Point ² (100)	15.1	0.90	1279	32.1	0.79	224	80.5	0.30	79	55.7	0.27	76
Great Slave - Hay River ² (99)	13.3	0.68	1209	31.2	0.37	246	-	-	-	-	-	-
Claire - Prairie Point ² (578)	19.6	0.37	404	-	-	-	37.9	0.25	70	-	-	-
Winnipeg - George Island ² (101)	11.8	0.87	778	28.6	0.66	146	41.9	0.49	77	33.0	0.59	397
Winnipeg - Gimli ² (101)	15.6	0.79	758	30.1	0.61	147	42.4	0.48	76	36.2	0.50	394
Winnipeg - Pine Dock ² (101)	12.6	0.86	694	29.7	0.67	139	42.7	0.51	74	34.6	0.56	381
Manitoba - Westbourne ² (191)	13.4	0.85	499	34.2	0.42	100	34.2	0.33	73	46.0	0.11	71
Manitoba - Steep Rock ² (191)	13.3	0.85	499	36.4	0.40	101	35.5	0.33	75	47.3	0.11	72
Cedar - Oleson Point ² (200)	35.9	0.86	545	76.7	0.20	252	54.8	0.54	78	-	-	-
Winnipegosis - Winnipegosis ² (281)	16.5	0.91	469	36.7	0.63	136	34.2	0.61	70	36.2	0.53	67
Lake of the Woods - Clearwater Bay ² (73)	16.8	0.72	648	32.3	0.46	206	36.6	0.40	77	-	-	-
Lake of the Woods - Cyclone Island ² (73)	16.1	0.74	642	31.0	0.51	206	35.9	0.41	77	-	-	-
Lake of the Woods - Hanson Bay ² (73)	16.3	0.73	642	30.4	0.53	207	36.0	0.40	77	-	-	-
Great Salt - Saltair Boat Harbor ³ (72)	7.4	0.91	44	20.0	0.38	35	-	-	-	29.4	0.21	27
Argentino - Calafate ⁴ (182)	14.6	0.97	856	21.9	0.93	185	-	-	-	-	-	-
Buenos Aires - Los Antiguos ⁴ (139)	19.0	0.73	47	29.4	0.70	19	-	-	-	-	-	-

Source of in-situ data: ¹NOAA Tides and Currents, ²Canada Wateroffice, ³U.S. Geological Survey (USGS), ⁴Ministerio de Planificación Federal, República Argentina

the satellite track crosses the river has a strong impact on the quality of the water level time series. Furthermore, distances of tenths of kilometres between the in situ station and

the nearest crossing altimeter track make it more difficult to prove dependences owed to unpredictable river flow effects.

Compared with time series from Hydroweb and River & Lakes, the new DAHITI approach can improve the gauge

Table 5: Water level time series of selected rivers of the Amazon basin from DAHITI, Hydroweb and River & Lakes compared with in situ data. For each comparison of water level time series from altimetry with in situ data an RMS difference and squared correlation is computed. The number of points from the final water level time series which were used for the validation is given in the third column (No) of each altimeter dataset. Additionally, the distance to the nearest in-situ station (upstream (+), downstream (-)) and the river width at the crossing altimeter track is shown.

Target name - Station name (DAHITI-ID)	Distance [km]	River width [km]	RMS [cm]	DAHITI R ²	No	RMS [cm]	Hydroweb R ²	No	RMS [cm]	River & Lakes R ²	No
Solimões, River - Tabatinga ¹ (405)	+ 28.8	~3.8	39.6	0.99	222	39.9	0.99	86	29.5	1.00	28
Solimões, River - Tabatinga ¹ (406)	- 23.2	~2.8	17.4	1.00	48	-	-	-	119.9	0.88	20
Solimões, River - Tefé ¹ (389)	- 14.0	~2.6	12.3	1.00	35	-	-	-	14.8	1.00	29
Solimões, River - Tefé ¹ (581)	+ 23.1	~3.7	24.5	0.99	95	53.9	0.98	84	-	-	-
Solimões, River - Itapéua ¹ (384)	- 13.9	~4.4	33.9	0.99	40	110.9	0.91	39	-	-	-
Solimões, River - Itapéua ¹ (582)	+ 8.9	~2.6	31.3	0.99	137	61.2	0.97	97	-	-	-
Purus, River - Aruma-Jusante ¹ (583)	- 12.5	~1.4	20.0	1.00	16	24.1	1.00	7	318.9	0.61	6
Jiparaná, River - Tabajara ¹ (584)	- 14.3	~0.4	113.8	0.87	47	335.5	0.29	33	-	-	-
Jiparaná, River - Tabajara ¹ (585)	+ 2.4	~0.3	46.7	0.97	93	-	-	-	-	-	-
Japurá, River - Vila Bittencourt ¹ (579)	- 40.1	~2.6	34.0	0.99	24	67.2	0.90	24	31.2	0.99	25
Japurá, River - Vila Bittencourt ¹ (580)	+ 47.5	~1.9	41.0	0.98	26	61.3	0.93	25	115.1	0.80	14
São Lourenço, River - Posada Taiama ¹ (1093)	+ 0.8	~0.3	25.4	0.91	160	-	-	-	-	-	-
São Lourenço, River - Posada Taiama ¹ (1094)	+ 4.8	~0.3	21.7	0.94	157	-	-	-	-	-	-
Madeira, River - Humaitá ¹ (371)	- 27.6	~2.5	19.4	1.00	35	45.1	0.99	29	53.2	0.99	28
Madeira, River - Humaitá ¹ (360)	+ 70.5	~1.5	36.3	0.99	173	50.2	0.99	91	-	-	-
Madeira, River - Guajará-Mirim ¹ (575)	- 48.7	~2.4	75.5	0.91	36	87.4	0.88	35	134.3	0.77	36
Negro, River - Porto de Manaus ¹ (161)	+ 15.5	~10.0	7.6	1.00	88	25.2	1.00	79	72.0	0.96	78
Negro, River - Moura ¹ (352)	- 64.8	~4.5	60.0	0.97	62	70.9	0.96	43	-	-	-
Negro, River - Moura ¹ (346)	+ 51.8	~18.5	43.6	0.98	42	46.3	0.97	45	44.1	0.98	40
Paraguai, River - Sao Francisco ¹ (1095)	- 32.3	~0.8	22.5	0.96	46	-	-	-	-	-	-

Source of in-situ data: ¹ Agência Nacional de Águas (ANA)

1115 consistency for most of the targets. The improvement can reach several decimetres. Many correlation coefficients in
1120 large absolute water level variations (more than 10 m).

5 Conclusions

1125 This paper presents a new method for estimating water level time series over inland waters using multi-mission satellite altimetry data. It is based on careful data preprocessing (including waveform retracking), a Kalman filter approach, and a rigorous outlier detection. The introduced method is the basis of DAHITI, an online database for inland water level time series from satellite altimetry observations operated by the Deutsches Geodätische Forschungsinstitut der Technischen Universität München (DGFI-TUM).

1130 The study demonstrates the performance of the new method for numerous lakes and rivers in North and South America. A comprehensive validation is performed by comparison with time series of water level variations from in situ gauging stations. Moreover, a comparison with external altimetry-derived water level variations is presented based on data from Hydroweb (LEGOS), the River & Lakes database (ESA-DMU), and the Global Reservoir and Lake Monitor (GRLM).

The lake level data sets computed with the presented approach yield accuracies between 4 cm and 36 cm depending on the surface extent of the lake and climate conditions (i.e. ice coverage). For rivers, the performance is considerably lower with RMS differences varying between 8 cm and 114 cm. Here the accuracy mainly depends on the crossing angle of the altimeter track and the surrounding conditions. Also, other surrounding conditions such as topography, quality of waveforms and their retracked water heights can influence the resulting water level time series. Especially in the Amazon basin the river meander can also change over the years because of strong seasonal variations.

For most study cases, the new approach yields significant accuracy improvements compared with water level variations provided by established inland altimeter databases, especially for smaller lakes and rivers. In addition, the temporal resolution of the DAHITI lake time series is significantly improved compared with other data sets, allowing for the detection of sub-monthly temporal changes.

The reasons for the improved performance of the presented approach are multiple: first, a larger observation data set is used as input as a multi-mission concept is realized. All available altimeter missions are cross-calibrated and incorporated in the computations. Second, the applied preprocessing consists of a robust outlier elimination and optional retracking. This ensures that only highly accurate data will be used. Moreover, the Kalman filter approach permits the optimal combination of all data sets and also includes the ac-

curacies of the input data for weighting. This also enables rigorous error propagation and the computation of formal errors for each water level height. Further comparisons for the three selected areas show that using the Kalman filter approach instead of a median approach leads to slightly decreased RMS differences. This indicates that the major improvements in the water level times of DAHITI are owed to the extended outlier rejection. In future, the Kalman filter approach will also be used for (near) real-time analysis and integration of altimeter data (with the so-called Operational Geophysical Data Record, OGDR). This enables daily actualization of the water level time series and may also be used for short-time predictions. Furthermore, the introduction of a dynamic model in the Kalman filter will cause an increase in the temporal resolution of the water level time series. For the development of the dynamic model external data sets such as GRACE, precipitation, etc. can be used.

In spite of the improved water level time series of DAHITI compared with results from Hydroweb, River & Lakes and GRLM, there are still some challenging tasks which have to be taken into account to make further improvements. Retracking is the most challenging task in using altimeter data for smaller water bodies. The mixture of different waveform shapes such as ocean-like, specular, etc. makes it difficult to choose a suitable retracking algorithm. Each retracker is optimized for special waveform shapes, but switching the retracking algorithm to achieve the best ranges will lead to retracker biases which have to be taken into account. Furthermore, inter-mission offsets can also arise because of the different characteristics of the measurement systems (e.g. Ku-band (Envisat) and Ka-band (SARAL/AltiKa)).

All presented water level time series as well as results for many additional targets are freely available in the 'Database for Hydrological Time Series over Inland Waters' (DAHITI) at <http://dahiti.dgfi.tum.de>.

Acknowledgements. The altimeter observations and geophysical corrections are taken from OpenADB (<http://openadb.dgfi.tum.de>). The altimeter missions are operated and maintained by CNES/NASA (Topex, Jason-1), ESA (ERS-1/2, Envisat), CNES/NASA/Eumetsat/NOAA (Jason-2), and ISRO/CNES (SARAL/AltiKa) and the original data sets are disseminated by AVISO, ESA, and PODAAC.

We thank Agência Nacional de Águas (ANA), National Oceanic and Atmospheric Administration (NOAA), government of Canada, U.S. Geological Survey (USGS) and Ministerio de Planificación Federal, República Argentina for providing the in situ data.

We also thank the reviewers for helpful comments and suggestions which helped us to improve the quality of this paper.

References

Berry, P., Jasper, A., and Bracke, H.: Retracking ERS-1 altimeter waveforms over land for topographic height determination: an expert system approach, ESA Pub. SP-414, 1, 403–408, 1997.

- Berry, P. A. M., Garlick, J. D., Freeman, J. A., and Mathers, E. L.: Global inland water monitoring from multi-mission altimetry, *Geophysical Research Letters*, 32, n/a–n/a, doi:10.1029/2005GL022814, <http://dx.doi.org/10.1029/2005GL022814>, 116401, 2005.
- Birkett, C., Reynolds, C., Beckley, B., and Doorn, B.: From Research to Operations: The USDA Global Reservoir and Lake Monitor, in: *Coastal Altimetry*, edited by Vignudelli, S., Kostianoy, A. G., Cipollini, P., and Benveniste, J., pp. 19–50, Springer Berlin Heidelberg, doi:10.1007/978-3-642-12796-0_2, 2011.
- Birkett, C. M.: The contribution of TOPEX/POSEIDON to the global monitoring of climatically sensitive lakes, *Journal of Geophysical Research: Oceans*, 100, 25 179–25 204, doi:10.1029/95JC02125, 1995.
- Boehm, J., Kouba, J., and Schuh, H.: Forecast Vienna Mapping Functions 1 for real-time analysis of space geodetic observations, *Journal of Geodesy*, 83, 397–401, doi:10.1007/s00190-008-0216-y, 2009.
- Bosch, W., Dettmering, D., and Schwatke, C.: Multi-Mission Cross-Calibration of Satellite Altimeters: Constructing a Long-Term Data Record for Global and Regional Sea Level Change Studies, *Remote Sensing*, 6, 2255–2281, doi:10.3390/rs6032255, 2014.
- Boser, B. E., Guyon, I. M., and Vapnik, V. N.: A Training Algorithm for Optimal Margin Classifiers, in: *Proceedings of the Fifth Annual Workshop on Computational Learning Theory, COLT '92*, pp. 144–152, ACM, New York, NY, USA, doi:10.1145/130385.130401, 1992.
- Brown, G.: The average impulse response of a rough surface and its applications, *Antennas and Propagation, IEEE Transactions on*, 25, 67–74, doi:10.1109/TAP.1977.1141536, 1977.
- Challenor, P. and Srokosz, M.: The extraction of geophysical parameters from radar altimeter return from a non-linear sea surface, *Mathematics in remote sensing*, pp. 257–268, 1989.
- Chelton, B., Ries, J., Haines, B., Fu, L., and P.S., C.: *Satellite Altimetry*, in: *Satellite Altimetry and Earth Sciences: A Handbook of Techniques and Applications*, edited by Fu, L. and Cazenave, A., pp. 1–131, Academic Press, 2001.
- Crétaux, J.-F. and Birkett, C.: Lake studies from satellite radar altimetry, *Comptes Rendus Geoscience*, 338, 1098 – 1112, doi:10.1016/j.crte.2006.08.002, la Terre observée depuis l'espace Observing the Earth from space, 2006.
- Crétaux, J.-F., Calmant, S., Romanovski, V., Shabunin, A., Lyard, F., Bergé-Nguyen, M., Cazenave, A., Hernandez, F., and Perosanz, F.: An absolute calibration site for radar altimeters in the continental domain: Lake Issykkul in Central Asia, *Journal of Geodesy*, 83, 723–735, doi:10.1007/s00190-008-0289-7, <http://dx.doi.org/10.1007/s00190-008-0289-7>, 2009.
- Crétaux, J.-F., Jelinski, W., Calmant, S., Kouraev, A., Vuglinski, V., Bergé-Nguyen, M., Gennero, M.-C., Nino, F., Rio, R. A. D., Cazenave, A., and Maisongrande, P.: SOLS: A lake database to monitor in the Near Real Time water level and storage variations from remote sensing data, *Advances in Space Research*, 47, 1497 – 1507, doi:10.1016/j.asr.2011.01.004, 2011.
- da Silva, J. S., Calmant, S., Seyler, F., Filho, O. C. R., Cochonneau, G., and Mansur, W. J.: Water levels in the Amazon basin derived from the ERS 2 and ENVISAT radar altimetry missions, *Remote Sensing of Environment*, 114, 2160 – 2181, doi:10.1016/j.rse.2010.04.020, 2010.

- de Oliveira Campos, I., Mercier, F., Maheu, C., Cochonneau, G., Kosuth, P., Blitzkow, D., and Cazenave, A.: Temporal variations of river basin waters from Topex/Poseidon satellite altimetry. Application to the Amazon basin, *Comptes Rendus de l'Académie des Sciences - Series IIA - Earth and Planetary Science*, 333, 633–643, doi:10.1016/S1251-8050(01)01688-3, 2001.
- Eicker, A., Schumacher, M., Kusche, J., Döll, P., and Schmied, H.: Calibration/Data Assimilation Approach for Integrating GRACE Data into the WaterGAP Global Hydrology Model (WGHM) US-1345 using an Ensemble Kalman Filter: First Results, *Surveys in Geophysics*, 35, 1285–1309, doi:10.1007/s10712-014-9309-8, <http://dx.doi.org/10.1007/s10712-014-9309-8>, 2014.
- Förste, C., Bruinsma, S., Flechtner, F., Marty, J., Lemoine, J., Dahle, C., Abrikosov, O., Neumayer, H., Biancale, R., Barthelmes, F.,¹³⁵⁰ and Balmino, G.: A new release of EIGEN-6C, presented AGU Fall Meeting 2012, San Francisco 2012, 2012.
- Global Runoff Data Center: Long-Term Mean Monthly Discharges and Annual Characteristics of GRDC Station / Global Runoff Data Center, Koblenz, Germany: Federal Institute of Hydrology¹³⁵⁵ (BfG), 2013.
- Gruber, C., Moon, Y., Flechtner, F., Dahle, C., Novák, P., König, R., and Neumayer, H.: Submonthly GRACE Solutions from Localizing Integral Equations and Kalman Filtering, in: *Earth on the Edge: Science for a Sustainable Planet*, edited by Rizos, C. and Willis, P., vol. 139 of *International Association of Geodesy Symposia*, pp. 383–389, Springer Berlin Heidelberg, doi:10.1007/978-3-642-37222-3_51, http://dx.doi.org/10.1007/978-3-642-37222-3_51, 2014.
- Guha-Sapir, D. and Vos, F.: Quantifying Global Environmental¹³⁶⁵ Change Impacts: Methods, Criteria and Definitions for Compiling Data on Hydro-meteorological Disasters, in: *Coping with Global Environmental Change, Disasters and Security*, edited by Brauch, H. G., Oswald Spring, U., Mesjasz, C., Grin, J., Kameri-Mbote, P., Chourou, B., Dunay, P., and Birkmann, J.,¹³⁷⁰ vol. 5 of *Hexagon Series on Human and Environmental Security and Peace*, pp. 693–717, Springer Berlin Heidelberg, doi:10.1007/978-3-642-17776-7_40, 2011.
- Hwang, C., Guo, J., Deng, X., Hsu, H.-Y., and Liu, Y.: Coastal gravity anomalies from retracked Geosat/GM altimetry: improve-¹³⁷⁵ment, limitation and the role of airborne gravity data, *Journal of Geodesy*, 80, 204–216, 2006.
- Kalman, R. E.: A New Approach to Linear Filtering and Prediction Problems, *Transactions of the ASME—Journal of Basic Engineering*, 82, 35–45, 1960.
- Maillard, P., Bercher, N., and Calmant, S.: New processing approaches on the retrieval of water levels in Envisat and SARAL radar altimetry over rivers: A case study of the São Francisco River, Brazil, *Remote Sensing of Environment*, 156, 226–241, doi:10.1016/j.rse.2014.09.027, 2015.
- Martin, T. V., Zwally, H. J., Brenner, A. C., and Bindschadler, R. A.: Analysis and retracking of continental ice sheet radar altimeter waveforms, *Journal of Geophysical Research: Oceans*, 88, 1608–1616, doi:10.1029/JC088iC03p01608, 1983.
- McCarthy, D. and Petit, G.: IERS Conventions 2003 (IERS Technical Note ; 32), Frankfurt am Main: Verlag des Bundesamtes für Kartographie und Geodäsie, p. 127 pp., 2004.
- Ponchaut, F. and Cazenave, A.: Continental lake level variations from Topex/Poseidon (1993–1996), *Comptes Rendus de l'Académie des Sciences - Series IIA - Earth and Planetary Science*, 326, 13–20, doi:10.1016/S1251-8050(97)83198-9, 1998.
- Ričko, M., Birkett, C. M., Carton, J. A., and Crétaux, J.-F.: Publisher's Note: Intercomparison and validation of continental water level products derived from satellite radar altimetry, *Journal of Applied Remote Sensing*, 6, 060103–060103, doi:10.1117/1.JRS.6.060103, <http://dx.doi.org/10.1117/1.JRS.6.060103>, 2013.
- Scharroo, R. and Smith, W. H. F.: A global positioning system-based climatology for the total electron content in the ionosphere, *Journal of Geophysical Research: Space Physics*, 115, n/a–n/a, doi:10.1029/2009JA014719, 2010.
- Schwatke, C., Dettmering, D., and Boergens, E.: Potential of SARAL/AltiKa for inland water applications, *Marine Geodesy*, n/a, n/a–n/a, doi:10.1080/01490419.2015.1008710, 2015.
- Seyler, F., Calmant, S., da Silva, J. S., Moreira, D. M., Mercier, F., and Shum, C. K.: From TOPEX/Poseidon to Jason-2/OSTM in the Amazon basin, *Advances in Space Research*, 51, 1542–1550, doi:10.1016/j.asr.2012.11.002, satellite Altimetry Calibration and Deformation Monitoring using GNSS, 2013.
- Smola, A. J. and Schölkopf, B.: A Tutorial on Support Vector Regression, *Statistics and Computing*, 14, 199–222, doi:10.1023/B:STCO.0000035301.49549.88, 2004.
- Stakhiv, E. and Stewart, B.: Needs for Climate Information in Support of Decision-Making in the Water Sector, *Procedia Environmental Sciences*, 1, 102–119, doi:<http://dx.doi.org/10.1016/j.proenv.2010.09.008>, <http://www.sciencedirect.com/science/article/pii/S1878029610000095>, world Climate Conference - 3, 2010.
- Wingham, D., Rapley, C., and Griffiths, H.: New techniques in satellite altimeter tracking systems, in: *ESA Proceedings of the 1986 International Geoscience and Remote Sensing Symposium (IGARSS'86) on Remote Sensing: Today's Solutions for Tomorrow's Information Needs.*, vol. 3, 1986.
- Yang, Y. and Gao, W.: An Optimal Adaptive Kalman Filter, *Journal of Geodesy*, 80, 177–183, doi:10.1007/s00190-006-0041-0, <http://dx.doi.org/10.1007/s00190-006-0041-0>, 2006.
- Zakharova, E. A., Kouraev, A. V., Cazenave, A., and Seyler, F.: Amazon River discharge estimated from TOPEX/Poseidon altimetry, *Comptes Rendus Geoscience*, 338, 188–196, doi:10.1016/j.crte.2005.10.003, 2006.