



HESSD

12, 2843–2883, 2015

Turbidity in the fluvial Gironde Estuary

I. Jalón-Rojas et al.

Turbidity in the fluvial Gironde Estuary (S–W France) based on 10 year continuous monitoring: sensitivity to hydrological conditions

I. Jalón-Rojas^{1,*}, S. Schmidt¹, and A. Sottolichio¹

¹UMR5805 EPOC, CNRS-Université de Bordeaux, Pessac, France

* *Invited contribution by I. Jalón-Rojas, recipient of the EGU Outstanding Student Poster Award 2014*

Received: 12 February 2015 – Accepted: 26 February 2015 – Published: 10 March 2015

Correspondence to: I. Jalón-Rojas (isabel.jalon-rojas@u-bordeaux.fr)

Published by Copernicus Publications on behalf of the European Geosciences Union.

Title Page

Abstract

Introduction

Conclusions

References

Tables

Figures



Back

Close

Full Screen / Esc

Printer-friendly Version

Interactive Discussion



Abstract

Climate change and human activities impact the volume and timing of freshwater input to estuaries. These modifications in fluvial discharges are expected to influence estuarine suspended sediment dynamics, and in particular the turbidity maximum zone (TMZ). Located in the southwest France, the Gironde fluvial-estuarine systems has an ideal context to address this issue. It is characterized by a very pronounced TMZ, a decrease in mean annual runoff in the last decade, and it is quite unique in having a long-term and high-frequency monitoring of turbidity. The effect of tide and river flow on turbidity in the fluvial estuary is detailed, focusing on dynamics related to changes in hydrological conditions (river floods, periods of low-water, inter-annual changes). Turbidity shows hysteresis loops at different time scales: during river floods and over the transitional period between the installation and expulsion of the TMZ. These hysteresis patterns, that reveal the origin of sediment, locally resuspended or transported from the watershed, may be a tool to evaluate the presence of remained mud. Statistics on turbidity data bound the range of river flow that promotes the TMZ installation in the fluvial stations. Hydrological indicators of the persistence and turbidity level of the TMZ are also defined. The long-term evolution of these indicators confirms the influence of discharge decrease on the intensification of the TMZ in tidal rivers, and provides a tool to evaluate future scenarios.

1 Introduction

Macrotidal estuaries are highly variable systems as result of the strong influence of both tides and river discharge. In particular dynamics of suspended particulate matter (SPM) and the occurrence of a turbidity maximum zone (TMZ) are complex and difficult to predict (Fettweis et al., 1998; Mitchell and Uncles, 2013). Different processes can induce the formation of the TMZ (for details see Allen et al., 1980; Dyer, 1988; Jay and Musiak, 1994; Talke et al., 2009). This highly concentrated zone plays an important

HESSD

12, 2843–2883, 2015

Turbidity in the fluvial Gironde Estuary

I. Jalón-Rojas et al.

Title Page

Abstract

Introduction

Conclusions

References

Tables

Figures

◀

▶

◀

▶

Back

Close

Full Screen / Esc

Printer-friendly Version

Interactive Discussion



role on estuarine morphodynamics. Sediment depositions from the TMZ, termed fluid mud, may generate gradual accretion of bed and banks (Pontee et al., 2004; Schrottke et al., 2006; Uncles et al., 2006). Therefore, many estuaries require regular dredging against ongoing siltation events to maintain the depth of navigation channels.

5 Quite recently, considerable attention has been paid to evaluate the effect of climate changes (Fettweis et al., 2012) and human interventions (Schuttelaars et al., 2013; Winterwerp and Wang, 2013; Yang et al., 2013; De-Jonge et al., 2014) on natural distribution of SPM in estuaries. There are numerical evidences linking freshwater abstractions to an increased potential for up-estuary transport (Uncles et al., 2013).
10 Nevertheless the effects of shifts in freshwater inflow on sediment regime are not yet totally understood (Mitchell and Uncles, 2013). The longitudinally TMZ migration as result of seasonal variability of runoff was well described in many estuaries (Grabemann et al., 1997; Uncles et al., 1998; Guézennec et al., 1999). However, the effect of floods or long-term hydrological variability on sediment dynamics is scarcely documented.
15 Only Grabemann and Krause (2001) showed differences in SPM concentrations of the TMZ in the Weser estuary between a dry and a wet year, although the gaps in data hamper a detailed analysis. The transitional periods of installation and expulsion of the TMZ and of its associated mobile mud have also not been detailed. These limitations are partly due to the absence of relevant long-term datasets, which are not so common
20 in estuaries (Garel et al., 2009; Contreras and Polo, 2012).

The Gironde fluvio-estuarine system (SW France) is quite unique in having a long-term and high-frequency monitoring of water quality. This estuary presents a pronounced TMZ so far documented in the lower and central reaches (Allen and Castaing, 1973; Allen et al., 1980; Sottolichio and Castaing, 1999). The Gironde watershed has the largest water structural deficit in France (Mazzege et al., 2014). Warming climate
25 over the basin induces a decrease in mean annual runoff, a shift to earlier snow melting in mountainous areas and more severe low-flow conditions (Hendrickx and Sauquet, 2013). In addition, according to data of the agricultural census, irrigated areas have duplicated its surface in several regions of the watershed between 1988 and 2000,

HESSD

12, 2843–2883, 2015

Turbidity in the fluvial Gironde Estuary

I. Jalón-Rojas et al.

Title Page

Abstract

Introduction

Conclusions

References

Tables

Figures

◀

▶

◀

▶

Back

Close

Full Screen / Esc

Printer-friendly Version

Interactive Discussion



promoting strong water storage and abstractions. This context makes the Gironde estuary a good example to evaluate how changes in freshwater regime may affect the estuarine particle dynamic.

The goal of this work is to analyse the response of fine sediments to hydrological fluctuations, based on a 10 years, high-frequency database of turbidity in the fluvial Gironde estuary, in order to:

1. Document the trends of SPM at all representative time scales, from intratidal to interannual variability.
2. Analyse the role of floods on the sedimentary dynamic of the tidal rivers.
3. Discuss the influence of hydrological conditions on TMZ features (installation/expulsion, concentration, persistence).

2 The study site

With a total surface area of 635 km², the Gironde is a macrotidal fluvial-estuarine system located on the Atlantic coast (South-West of France, Fig. 1). The estuary shows a regular funnel shape of 75 km between the mouth and the junction of the Garonne and the Dordogne rivers. Tidal rivers present a single sinuous channel with weak slopes and narrow sections (about 300, 250 and 200 m at Bordeaux, Portets and Libourne respectively, Fig. 1). At the Gironde mouth, the mean neap and spring tidal ranges are respectively 2.5 and 5 m (Bonneton et al., 2015). The tidal wave propagates up to 180 km from the estuary mouth. Thereby, the uppermost limits for the dynamic tidal zone are (Fig. 1): La Réole for the Garonne River (95 km from the river confluence); and Pessac for the Dordogne River (90 km from the river confluence). As the tide propagates upstream, tidal currents undergo an increasing ebb-flood asymmetry (longer and weaker ebb currents; shorter and stronger flood currents) and the wave is amplified (Allen et al., 1980). The tidal wave reaches its maximum value at about 125 km from the mouth (Bonneton et al., 2015), before decaying in the fluvial narrow sections.

Turbidity in the fluvial Gironde Estuary

I. Jalón-Rojas et al.

Title Page

Abstract

Introduction

Conclusions

References

Tables

Figures

⏪

⏩

◀

▶

Back

Close

Full Screen / Esc

Printer-friendly Version

Interactive Discussion



**Turbidity in the fluvial
Gironde Estuary**

I. Jalón-Rojas et al.

Title Page

Abstract

Introduction

Conclusions

References

Tables

Figures

I◀

▶I

◀

▶

Back

Close

Full Screen / Esc

Printer-friendly Version

Interactive Discussion



The tidal asymmetry toward upstream and the subsequent tidal pumping coupled to density residual circulation develop a turbidity maximum zone (TMZ). The high tidal ranges and the great length of the estuary promote a highly turbid TMZ (Uncles et al., 2002). In surface waters of the middle estuary, SPM concentrations range between 0.1 and 10 gL⁻¹ according to Sottolichio and Castaing (1999). Estuarine suspended sediments have a dominant terrestrial origin and are mainly composed of clays (45–65 %) and silts (Fontugne and Jounneau, 1987). SPM residence time is comprised between 12 and 24 months, depending on river discharge (Saari et al., 2010). Freshwater inflow moves the TMZ along the estuary axis: during high river flow the TMZ moves down-estuary and vice versa (Castaing and Allen, 1981). There is also a secondary steady TMZ in the middle estuary possibly related to a high dynamic zone, so called the “erosion maximum zone” (Allen et al., 1980; Sottolichio and Castaing, 1999). At slack water, sediment deposition occurs on the river bed and banks. In the channel fluid mud can form elongated patches, with concentrations up to 300 gL⁻¹ (Allen, 1971). Measurements over a maximum of 3 days (Romaña 1983; Castaing et al., 2006) and satellite images (Doxaran et al., 2009) showed the presence of the TMZ in the tidal rivers during the summer-autumn period. However, the suspended sediments dynamics in this estuarine region are largely unknown.

3 Materials and methods

3.1 The multiyear high-frequency monitoring system

The Gironde estuary counts on an automated continuous monitoring network, called MAGEST (MAREl Gironde ESTuary), to address the current and future estuarine water quality. MAGEST network includes four sites (Fig. 1): Pauillac in the central estuary (52 km from the mouth); Libourne in the Dordogne tidal river (115 km from the mouth); and Bordeaux and Portets in the Garonne tidal river (100 and 115 km from the mouth respectively). The automated stations record dissolved oxygen, temperature, turbidity

and salinity every ten minutes at 1 m below the surface. In addition, an ultrasonic level controller measures the water depth in the stations of Bordeaux, Portets and Libourne. The turbidity sensor (Endress and Hauser, CUS31-W2A) measures values between 0 and 9999 NTU with a precision of 10 %. The saturation value (9999 NTU) of turbidity sensor corresponds to about 6 g L^{-1} (Schmidt et al., 2014). One may refer to Etcheber et al. (2011) for a description of the MAGEST survey program, for the technical features of monitoring system and for examples of the trends in measured parameters; and to Lanoux et al. (2013) for a detailed analysis of oxygen records.

The first implemented station was Pauillac the 15 June 2004. Acquisition at Portets and Libourne stations began the 16 November 2004 and at Bordeaux stations the 1 March 2005. Portets station was stopped the 11 January 2012. The severe environmental conditions, electrical/mechanical failures and sensor malfunctions could cause missing or wrong data. Therefore the database needed a cleaning for erroneous values in turbidity. By example 9999 NTU correspond to saturation values, but also to sensor errors in, these later need to be removed. A routine under Matlab was developed to retain only turbidity values corresponding to saturation. The validated database of turbidity corresponds to 1.223.486 data points recorded between 2005 and mid-2014. This corresponds to a rate of correct operating of 71, 70, 70 and 57 % for Bordeaux, Portets, Libourne and Pauillac stations respectively.

In addition, two tide gauges, managed by the port of Bordeaux (Grand Port Maritime de Bordeaux), record tide height at Pauillac and Bordeaux every 5 min. Hydrometric stations record each 1 to 24 h discharges of the Dordogne River (Pessac; Lamonzie Saint Martin) and of the Garonne River (La Réole; Tonneins) (Fig. 1). Data are available on the national web site: <http://www.hydro.eaufrance.fr/>.

3.2 Data treatment

Turbidity was analysed as function of river flow and water height at different time scales. To better identify intertidal trends, we calculated tidal-averaged turbidity with its corresponding tidal range. In order to avoid biased averaged values, we only consider the

HESSD

12, 2843–2883, 2015

Turbidity in the fluvial Gironde Estuary

I. Jalón-Rojas et al.

Title Page

Abstract

Introduction

Conclusions

References

Tables

Figures



Back

Close

Full Screen / Esc

Printer-friendly Version

Interactive Discussion



**Turbidity in the fluvial
Gironde Estuary**

I. Jalón-Rojas et al.

[Title Page](#)[Abstract](#)[Introduction](#)[Conclusions](#)[References](#)[Tables](#)[Figures](#)[|◀](#)[▶|](#)[◀](#)[▶](#)[Back](#)[Close](#)[Full Screen / Esc](#)[Printer-friendly Version](#)[Interactive Discussion](#)

tidal averages corresponding to at least 70 % of measured values for the considered period of time. Since management directives are often based on daily values, tidally and daily averages were compared. Figure 2 compares both turbidity averages and shows a very good agreement between the two calculations ($R^2 = 0.993$). Previous works have defined the TMZ in the Gironde estuary by a SPM concentration $> 1 \text{ g L}^{-1}$ (Allen et al., 1977; Castaing and Allen, 1981), which corresponds to a turbidity of about 1000 NTU. River floods are defined by a daily increase of the Garonne discharge higher than $480 \text{ m}^3 \text{ s}^{-1}$ (percentile 75 of river flow during the study period). A time shift was added to discharge time series for the study of floods, since hydrometric stations are located tens of kilometres upstream of the MAGEST ones. It has been estimated based on the velocity of the peak floods between two hydrometric stations.

We performed statistical analysis on tidal-averaged data. We compared turbidity values according to stations (Portets, Bordeaux, Libourne and Pauillac), period (months, and tidal range), and their interactions (e.g. station within period), by performing analysis of variance. We used parametric test (T test and ANOVA) when datasets or its transforms (like log or cubic root) met the normality and homoscedasticity criteria. Otherwise we used non-parametric tests (Mann–Whitney U and Kruskal–Wallis tests). In the following, we refer to “significantly different” datasets when these tests on tidal-averaged data were significant at $p < 0.5$. These tests were carried out using STATA software (v. 12.1, StataCorp, 2011).

4 Results

4.1 Hydrological trends

The Gironde estuary drains a watershed of $81\,000 \text{ km}^2$, (Fig. 1a) strongly regulated by dams and reservoirs. The Garonne and the Dordogne Rivers contributes respectively to 65 and 35 % of the freshwater input. Historical data reveal drastic changes in hydrological conditions: the annual mean discharge (Garonne + Dordogne) is de-

Turbidity in the fluvial Gironde Estuary

I. Jalón-Rojas et al.

Title Page

Abstract

Introduction

Conclusions

References

Tables

Figures

⏪

⏩

◀

▶

Back

Close

Full Screen / Esc

Printer-friendly Version

Interactive Discussion



creasing, flood events are increasingly scarce and drought periods are becoming more durable. In the period between the 1960's and the 1980's, the mean annual discharge was $1000 \text{ m}^3 \text{ s}^{-1}$. In contrast, during the studied period (January 2005–July 2014), the mean annual discharge was $680 \text{ m}^3 \text{ s}^{-1}$ (Fig. 3a). For this period, the inter-annual variability in freshwater inflow was also remarkable: the driest year was 2011 with a mean discharge of $433 \text{ m}^3 \text{ s}^{-1}$ and the wetter one was 2013 with a total mean discharge of $961 \text{ m}^3 \text{ s}^{-1}$. River discharge varies also seasonally reaching the highest values in January to February and the smallest in August to September. For the studied period, mean discharges were $720 \text{ m}^3 \text{ s}^{-1}$ in winter (21 December to 20 March) and $190 \text{ m}^3 \text{ s}^{-1}$ in summer (21 June to 20 September) for the Garonne River (380 and $105 \text{ m}^3 \text{ s}^{-1}$ for the Dordogne River).

Tides are semidiurnal (the main harmonic component is the M_2) with a period of 12 h 25 min. Between January 2005 and July 2014, the minimal, mean and maximal values of tidal ranges were respectively about 4.1, 1.9 and 6.1 m at Pauillac and about 4.9, 2.5 and 6.6 m at Bordeaux (see the whole time series in Fig. 3b). Spring and neap tides were defined as the tidal cycles which tidal range is respectively above the percentile 75 and below the percentile 25. These values were about 3.5 (p25) and 4.7 (p75) at Pauillac, and about 4.3 (p25) and 5.4 (p75) at Bordeaux.

4.2 Short-term variability in turbidity

Figure 4 presents examples of high frequency (10 min) data recorded at Bordeaux under two contrasted conditions of fluvial discharge. Continuous measurements reveal turbidity patterns related to tidal cycles, and to changes in fluvial discharges.

4.2.1 Tidal cycles

The first selected dataset (Fig. 4, column I) corresponds to a low-water period: the Garonne discharge was below $120 \text{ m}^3 \text{ s}^{-1}$. Turbidity shows a large range of values between 740 and 9999 NTU, testifying the presence of the TMZ in the tidal river. It is

noticeable that turbidity is higher than the saturation value, i.e. $> 6 \text{ gL}^{-1}$, during several hours per tidal cycle. These raw data illustrate the short-term changes in turbidity due to deposition-resuspension processes induced by changes in current velocities throughout the tidal cycles. This pattern was already reported in the central estuary (Allen et al., 1980; Castaing and Allen, 1981). Figure 4Ic relates turbidity and water level of the above raw data, showing more clearly the intratidal patterns: turbidity peaks at mid-flood and mid-ebb, due to the resuspension by the maximum current velocities. In contrast minimum turbidity values are always recorded at high tide and low tide due to deposition processes.

4.2.2 Flood events

The second selected dataset (Fig. 4, column II) represents the turbidity signal related to a spring flood with a discharge peak at $1730 \text{ m}^3 \text{ s}^{-1}$. As shown in the middle and lower panels, throughout river floods turbidity is the lowest during rising tide when tidal currents are against river flow; from high tide, river sediments are transported downstream, turbidity values begin to increase and the SPM peak usually occurs between mid-ebbing and low tide. Peculiar floods, specially the first after low-water periods, present a turbidity peak also at mid-rising tide. These peaks are associated with local resuspension processes and their occurrences are likely to give an indication of the existence of remained mud trapped in the tidal rivers.

Table 1 collects maximum discharge value and its associated maximum turbidity (when recorded) of each flood event at Bordeaux and Portets stations. Flood events were identified in the time series of river discharge in Fig. 3a. The associated turbidity peaks were calculated as the maximum of the turbidity values at low tide (fluvial signature) in order to consider only the sediments transported by river flow. As shown in Table 1, turbidity maxima during flood events are 5 to 30 times lower compared to TMZ maximum values (50 % of the recorded floods present a maximum tur-

Title Page

Abstract

Introduction

Conclusions

References

Tables

Figures

◀

▶

◀

▶

Back

Close

Full Screen / Esc

Printer-friendly Version

Interactive Discussion



bidity < 1000 NTU). Only such a continuous record can capture turbidity signatures of a flood that often occurs for a few hours.

4.3 Long-term variability in turbidity

4.3.1 From fortnightly to seasonal variability

5 The 10 year time series of tidal averaged turbidity (Fig. 3) reveals short oscillations related to neap-spring tide cycles and seasonal trends induced by hydrology. Maximum turbidity values are recorded during spring tides, since higher current velocities favour the resuspension of sediments (Allen et al., 1980). The highest turbidities occur during low waters (usually between July and November) in the up estuary waters (Fig. 3e and f) due to the upstream displacement of the TMZ. Turbidity is usually minimal in spring after the flood period. In the middle estuary (Fig. 3c) seasonal changes are more moderate and show an inverse trend. This is due to the existence of a permanent TMZ in this estuarine zone, which is possibly related to a mud-trapping zone (Sottolichio and Castaing, 1999).

15 Figure 5 summarizes the main characteristics (mean, percentiles) of turbidity to compare the four stations during contrasted hydrological periods and tidal ranges. Differences between periods of high and low river discharges are obvious in the fluvial stations (Bordeaux, Portets, Libourne). In these stations, turbidity in August is significantly ($p < 0.001$) higher than in February: mean values in August are 8, 27 and 54 times higher than in February at Bordeaux, Portets et Libourne, respectively. By contrast, at Pauillac station, in the central estuary, turbidity remains relatively high throughout the year (see Fig. 3). However, turbidity in August is significantly lower ($p < 0.000001$) than in February, when TMZ moves upstream. Turbidity values are also significantly different between the three fluvial stations in both dry ($p < 0.0018$) and wet ($p < 0.0001$) months. Summer turbidity values at Bordeaux and Libourne are higher than at Portets and Pauillac, reaching values above 7500 NTU. In February, turbidity is lower in the most upstream stations, with mean tidally-averaged turbidity values of 1322, 401, 93

Turbidity in the fluvial Gironde Estuary

I. Jalón-Rojas et al.

Title Page

Abstract

Introduction

Conclusions

References

Tables

Figures



Back

Close

Full Screen / Esc

Printer-friendly Version

Interactive Discussion



and 52 NTU at Pauillac, Bordeaux, Portets and Libourne, respectively. Turbidity at high tidal range is significantly (e.g. $p < 0.000025$ at Pauillac, $p < 0.017$ at Libourne) higher than at low tide at all station in August: respectively for Pauillac, Bordeaux, Portets and Libourne, mean turbidity at high tide was 2.7, 2.3, 1.7 and 1.6 times higher compared to low tide. However, in February tidal range does not induce significant differences in turbidity at the most upstream stations of Portets ($p = 0.22$) and Libourne ($p = 0.37$). Only Pauillac and Bordeaux stations present turbidity values significantly higher ($p < 0.000001$) at high tide than at low tide during this month.

4.3.2 Interannual variability

The observation of the entire dataset of tidally-averaged turbidity evidences a strong interannual variability in SPM in the fluvial Gironde estuary. Figure 3 allows to appreciate marked differences in the concentration and in the duration of the TMZ for the monitored years at Bordeaux, Portets and Libourne. The maximum turbidity values exceeded 7200 NTU in the years 2010, 2011 and 2012 at Bordeaux and in the years 2010 and 2012 at Libourne. By contrast, during the year 2008 tidal-averaged turbidity was always below 6700 and 4400 NTU at Bordeaux and Libourne respectively. Portets station is less documented: tidal-averaged turbidity maxima ranged between 4730 and 6880 NTU (years 2009 and 2006, respectively). The durations of the TMZ occurrence ($\text{Duration}_{\text{TMZ}}$) were calculated per year as the number of days tidal-averaged turbidity overtakes 1000 NTU (Fig. 6). In general, the TMZ is less present for the more upstream reaches. Annual durations decrease from Bordeaux (varying between 93 and 259 days; years 2013 and 2011, respectively), to Portets (varying between 91 and 171 days; years 2006 and 2008, respectively), and to Libourne (varying between 33 and 143 days; years 2007 and 2011, respectively). The TMZ appeared also during dry winters (striped bars in Fig. 6) like in 2012 (39 days at Bordeaux and 6 days at Libourne).

Turbidity in the fluvial Gironde Estuary

I. Jalón-Rojas et al.

Title Page

Abstract

Introduction

Conclusions

References

Tables

Figures

⏪

⏩

◀

▶

Back

Close

Full Screen / Esc

Printer-friendly Version

Interactive Discussion



5 Discussion

The presence of TMZ (duration, turbidity level, hibernal occurrence) is more marked and better documented in Bordeaux waters. The following discussion is dedicated to the tidal Garonne.

5.1 Mobile mud expulsion rhythm based on sediment dynamics during floods

River floods expel the TMZ (and its associated mobile mud) from fluvial to middle estuary as showed in Fig. 3. According to Castaing and Allen (1981), the repetition of strong flood events, along with spring tides, favours the expulsion of a part of the TMZ toward the sea. Floods also transport eroded sediments from the watershed that contribute to the TMZ. Identifying both processes is important to discuss the role of floods on the sedimentary budget of tidal rivers. The literature proposes the hysteresis-based analysis to search specific patterns of sediment transport in rivers (Williams, 1989; Klein, 1984; López-Tarazón et al., 2009). The relative position of sediment sources within the catchment is analysed through the flow sediment hysteresis shapes (clockwise or counterclockwise). In short, anti-clockwise loops correspond to a transport of sediments from upstream distant sources, while clockwise loops occur when the sediment source is the channel itself or adjacent areas. Based on the MAGEST turbidity database, flow sediment hysteresis shapes were systematically analysed for the 26 floods recorded at Bordeaux (13 at Portets; Table 1). Only the values at low tide were used to trace the loops in order to preserve the fluvial signal and to avoid the impact of local resuspension by tidal currents on the levels of turbidity. The succession of hysteresis shapes over several years follows a seasonal pattern in the Garonne tidal river (Table 1, illustrated for the year 2013 in Fig. 7). In the case of Bordeaux:

- The first floods that occur at the end of the low water and expel the TMZ down estuary show clockwise (C) hysteresis loops (e.g. f3, f8, f11, f24, Table 1; f24 in Fig. 7). This indicates the advection of resuspended sediments from the close bed and banks. During the occurrence of the TMZ in the fluvial section, there is an

Title Page

Abstract

Introduction

Conclusions

References

Tables

Figures

⏪

⏩

◀

▶

Back

Close

Full Screen / Esc

Printer-friendly Version

Interactive Discussion



accretion of sediments that remain after the TMZ expulsion. This mud is eroded by river flood.

- Winter and some early spring floods present mixed (M) hysteresis curves, i.e., clockwise loops with a counterclockwise loop around the flood peak (f25 in Fig. 7). Some events show a predominance of the clockwise loop (M(C), e.g. floods f1, f4, f17, Table 1), or of the counterclockwise loop (M(CC), e.g. floods f15, f18 Table 1). This pattern suggests the presence of local sediments, probably remained TMZ-originated mud, and also the transport of sediment from remote places. The predominant loop could be interpreted in term of proportion of each sediment source.
- Spring floods follow counterclockwise (CC) hysteresis patterns (e.g. floods f2, f7, f10, f28, Table 1; f26, f27, f28 in Fig. 7). This means that sediments are mainly transported from upstream areas; the TMZ-derived mud is expected to be totally expelled.

A similar seasonal evolution of hysteresis also exists at Portets, but it is subtler probably in relation with its upstream position: the flow sediment curves of the first floods are mixed and counterclockwise loops already appear in winter (Table 1). For example, the flood f1 (31 January 2006) presented a mixed, but predominantly C, loop at Bordeaux indicating dominant local sediments, whereas the simultaneous CC loop at Portets traced a distant origin of sediments. The TMZ-originated mud is less present locally and more quickly expelled in the uppermost section.

Therefore, hysteresis curves are indicators of the presence of mobile mud in tidal rivers, as schematized in Fig. 8, and permit to discuss its rhythm of expulsion for different hydrological conditions and positions along the tidal river axis. During the wet years 2008 and 2009 the mud disappeared from Portets and Bordeaux in the beginning of winter with the first floods. In contrast, mud was only expelled in May during the dry years 2007 and 2012. In the case of the year 2010, we assume it was present all the year in the absence of CC pattern and marked floods (Table 1).

Title Page

Abstract

Introduction

Conclusions

References

Tables

Figures

⏪

⏩

◀

▶

Back

Close

Full Screen / Esc

Printer-friendly Version

Interactive Discussion



This first detailed study of 10 year continuous turbidity records suggests that deposition of mobile mud also occurs in the tidal Gironde, as already reported in the central estuary (Allen, 1971; Sottolichio and Castaing, 1999). Two-third of the floods from 2005 to mid-2014 contributed to the progressive expulsion of fluid mud from Bordeaux. As turbidity values associated to floods are significantly lower than those in the TMZ, this demonstrates that floods play a more important role in flushing sediment downstream than in increasing the TMZ concentration.

5.2 Occurrence of the TMZ in the tidal river

The prediction of TMZ location is a challenge in the fluvial Gironde estuary and of particular interest to improve regional sediment management. The present work, based on turbidity measurements over the last 10 years, reveals a seasonal occurrence of the TMZ at Portets, 15 km upstream Bordeaux. The presence of the TMZ depends mainly on the freshwater inflow in major macrotidal European estuaries (e.g. Weser, Seine, Scheldt, Humber, see Mitchell, 2013). To better understand the relationships between turbidity and river flow in the Garonne tidal river, Fig. 9 shows the tidally (a) and daily (b) averaged turbidity as a function of river flow (3 day average). In Pauillac (central estuary) the dependence on river flow is the weakest: turbidity is slightly lower when the TMZ elongates to the upper reaches, but also when floods push suspended sediments seaward. In the tidal Garonne River, turbidity increases with decreasing river flow for discharges lower than about 1000 and 600 m³ s⁻¹ at Bordeaux and Portets respectively. At Bordeaux, the maximum turbidity values remain rather constant in the range 50–200 m³ s⁻¹ because of the saturation of the turbidity sensor. For the highest discharges (> 1500 m³ s⁻¹), turbidity increases up to about 2450 NTU with increasing river flow.

Determining a precise discharge threshold of the TMZ installation per station is tricky, due to the large variability in turbidity, more than one order of magnitude at 200 m³ s⁻¹, partly explained by the tidal range and the locally-available sediment stock. During spring tides, current velocities and thus bed shear stress are stronger, promoting sedi-

Title Page

Abstract

Introduction

Conclusions

References

Tables

Figures



Back

Close

Full Screen / Esc

Printer-friendly Version

Interactive Discussion



ment resuspension and hence higher turbidity. This process is visible and quantifiable in Fig. 9a for different discharges. The dependence is strong when the TMZ is installed in the fluvial estuary at low water. On the opposite, the effect of tidal range is null during floods, when turbidity is associated to sediments transported from the watershed. To detail the relationship between these variables, Fig. 10 presents turbidity as a function of tidal range for raising-falling neap-spring cycles during the periods of installation, presence and expulsion of the TMZ at Bordeaux in 2009 (see periods in Fig. 3). During the TMZ installation (a) and when the TMZ is completely installed (b), turbidity was lower during neap-spring tide transition than during the spring-neap-tide one. This hysteresis pattern, already observed in other estuaries, is explained by the consolidation of deposited material during neap tides, when currents velocities and resuspension are lower (Grabemann et al., 1997; Guézennec et al., 1999; Grabemann and Krause, 2001). During the installation of the TMZ the maximum turbidity occurs 4–5 tidal cycles after the maximum tidal range (Fig. 10, curve a). This is explained by a gradual increase in sediment availability at the riverbed as river discharge decreases, promoting the upstream shift of the TMZ. During the TMZ expulsion period, following river flood, the hysteresis curve is reversed (Fig. 10, curve c), the sediments are progressively resuspended and expelled down estuary and the stock decreases. These behaviours were also found in Portets station.

Differences on turbidity between the periods of decreasing and increasing river flow are also notable in the fluvial estuary (Fig. 9b). In the tidal Garonne, for same discharge intensity, the smallest turbidity values are always associated with the TMZ installation (decreasing discharge) and the highest values during the TMZ expulsion (increasing discharge). This indicates that the discharge turbidity curve follows a clockwise hysteresis over the transitional periods of installation and expulsion of the TMZ (Fig. 11). For example, for a river flow of $500 \text{ m}^3 \text{ s}^{-1}$, daily-averaged turbidity at Bordeaux was 8 to 50 times higher during the falling discharge curve in the year 2009. Such hysteresis were also recorded in the Weser estuary (Grabemann et al., 1997; Grabemann and Krause, 1998), suggesting an association with delays in TMZ movements or with the

HESSD

12, 2843–2883, 2015

Turbidity in the fluvial Gironde Estuary

I. Jalón-Rojas et al.

Title Page

Abstract

Introduction

Conclusions

References

Tables

Figures

◀

▶

◀

▶

Back

Close

Full Screen / Esc

Printer-friendly Version

Interactive Discussion



local sediment inventory. We explain these hysteresis patterns by an accumulation of sediments during the presence of the TMZ that need large river flow to be expelled. This agrees with the existence a deposition flux of mud remained at upper reaches after the passage of the TMZ.

5 A distinction in turbidity values corresponding to the periods of TMZ installation or expulsion is then necessary to precise the discharge threshold of the TMZ installation in tidal rivers. Figure 12 summarizes the distribution of turbidity values as a function of river flow (intervals of $30 \text{ m}^3 \text{ s}^{-1}$) during the transitional periods of installation and
10 to a probability of TMZ installation (as defined by tidal average turbidity $> 1000 \text{ NTU}$, Fig. 12a) or TMZ expulsion (tidal averaged turbidity $< 1000 \text{ NTU}$, Fig. 12b). The discharges between $200\text{--}300 \text{ m}^3 \text{ s}^{-1}$ present the highest probabilities to promote the TMZ installation. The expulsion threshold is less bounded since the intensity and the amount of first floods are variable. Discharges greater than $350 \text{ m}^3 \text{ s}^{-1}$ promote the TMZ expul-
15 sion and discharges above over $610 \text{ m}^3 \text{ s}^{-1}$ ensure the complete expulsion.

5.3 Has the TMZ intensified in the tidal Garonne?

In the absence of historical turbidity data in tidal rivers, it is difficult to judge the evolution of the TMZ. There are only few limited available dataset, issued from field campaigns. By example in September 1960, SPM concentrations of surface waters at Bordeaux range between 1 gL^{-1} (mean tide) and 2.5 gL^{-1} (spring tide) (Castaing et al.,
20 2006). At Portets, SPM concentration reached 2.5 gL^{-1} just before high tide for spring tide, while at mean and neap tides, SPM concentrations was always bellow 1 gL^{-1} . Romaña (1983) presented also quasi-instantaneously turbidity measurements implemented by helicopter along the estuary for 3 days of contrasted hydrological conditions
25 in the years 1981–1982. At low-water TMZ appeared 10 km upstream Portets reaching a maximum value of 1.7 gL^{-1} . Although these values seem lower than current turbidity trends, the extremely limited measurement periods and the difference in sampling points prevent to draw conclusions about a possible TMZ intensification in the tidal

Title Page

Abstract

Introduction

Conclusions

References

Tables

Figures

◀

▶

◀

▶

Back

Close

Full Screen / Esc

Printer-friendly Version

Interactive Discussion



river. However, the remarkable dependence of turbidity to river flow in the fluvial section (Fig. 9) suggests that the decreasing trend in river flow in the last decades (Sect. 4.1) may lead to an upstream intensification of the TMZ.

The 10 year dataset of the MAGEST stations of Bordeaux and Portets was used to evaluate the impact of hydrological conditions on TMZ (turbidity level and persistence) in the tidal Garonne. The annual maximum turbidity value ($Turbidity_{max}$, as an indicator of turbidity level) and the duration ($Duration_{TMZ}$) of the TMZ were compared to three hydrological characteristics:

1. $Duration_{LW}$: the duration of low water, calculated as the number of days per year river flow is below $250\text{ m}^3\text{ s}^{-1}$ at Bordeaux (Fig. 12) and $160\text{ m}^3\text{ s}^{-1}$ at Portets; these values were evaluated as the mean critical river flows above which the TMZ is installed in two stations.
2. Vol_{HW} : the river water volume passed during the previous high water period, i.e., between the last expulsion and the reinstallation of the TMZ;
3. Vol_{TMZ} : the river water volume passed during the presence of the TMZ at the considered station.

The $Duration_{TMZ}$ in both stations is well correlated to the $Duration_{LW}$ ($R^2 = 0.75$) as shown in Fig. 13. Years with a long low water period like 2011, 2006 or 2007 have a more persistent TMZ than years like 2013 or 2010 characterized by shorter periods of low river flow.

There is also a good correlation between $Turbidity_{max}$ and $Volume_{HW}$ ($R^2 = 0.78$, Fig. 14a). Years with numerous and large floods (like 2008, 2009 and 2013) present a less turbid TMZ. This can be the result of the total expulsion of mobile sediment (as seen in Sect. 5.2) and of the further flushing of the previous TMZ (Castaing and Allen, 1981). The $Volume_{LW}$ is not correlated to $Turbidity_{max}$. However, the sum of $Volume_{LW}$ and $Volume_{HW}$ improves the correlation ($R^2 = 0.90$). This is because the water volume during very wet summers is enough to expel partly the TMZ.

Turbidity in the fluvial Gironde Estuary

I. Jalón-Rojas et al.

Title Page

Abstract

Introduction

Conclusions

References

Tables

Figures

⏪

⏩

◀

▶

Back

Close

Full Screen / Esc

Printer-friendly Version

Interactive Discussion



Turbidity in the fluvial Gironde Estuary

I. Jalón-Rojas et al.

Title Page

Abstract

Introduction

Conclusions

References

Tables

Figures

◀

▶

◀

▶

Back

Close

Full Screen / Esc

Printer-friendly Version

Interactive Discussion



In summary, the duration of the low water period mainly determines the TMZ duration, and the freshwater volume during high water periods the TMZ concentration. High river flows are efficient in flushing the TMZ in the central estuary, even to the coastal waters, and expel higher quantity of mobile mud, as seen in Sect. 5.2. In order to discuss the potential evolution of the TMZ in the last decades, we calculated the $Duration_{LW}$ and the $Volume_{HW}$ at Bordeaux since 1960 to 2013 (Fig. 15). There is a trend in decreasing $Volume_{HW}$ and increasing $Duration_{LW}$, especially since the 90', which has changed the TMZ characteristics. The decrease in river discharge is attributed to climate change and human activities (Mazzege et al., 2014). For example, in the years 1963 and 1976 the low water period lasted respectively only 20 and 9 day, and $Volume_{HW}$ reached $25 \times 10^3 \text{ Hm}^3$ in 1969 and 1977 and $30 \times 10^3 \text{ Hm}^3$ 1965 and 1976. Considering the relationship between TMZ and hydrology (Figs. 13 and 14), we assume that the TMZ is at present more persistent and turbid than 40–50 years ago. Furthermore, an accumulation effect can favour this intensification. As the TMZ is concentrated and persistent, the required water volume to expel it increases, promoting the next TMZ to be more pronounced.

The effect of river discharge is assumed to be a major factor in the longitudinal shift of the TMZ. However morphological changes (natural or anthropogenic) may also contribute to the TMZ intensification (Winterwerp and Wang, 2013; De-Jonge et al., 2014), by amplifying tidal asymmetry and hence enhancing trapping of fine sediments, as suggested by Sottolichio et al. (2011). The importance of these changes is not documented yet. The combined effect of changes in topography and in river flow on the TMZ evolution needs be analysed by numerical modelling.

6 Conclusions

The high-frequency and long-term turbidity monitoring provides detailed informations on suspended sediment dynamics in the fluvial Gironde estuary over a wide range of time scales and hydrological conditions. Tide, river flow and sediment stock (mobile

Turbidity in the fluvial Gironde Estuary

I. Jalón-Rojas et al.

Title Page

Abstract

Introduction

Conclusions

References

Tables

Figures

I◀

▶I

◀

▶

Back

Close

Full Screen / Esc

Printer-friendly Version

Interactive Discussion



mud patches) induce large variability on turbidity levels. Suspended sediment dynamics related to tidal cycles (semidiurnal and fortnightly) follows the same cyclic processes in the tidal section, as previously described in the lower estuary (Allen et al., 1977). The TMZ occurrence in the tidal rivers is very sensitive to changes in hydrological conditions. River discharge is a key variable for the installation, expulsion and concentration of the TMZ and its associated mobile mud. River discharge thresholds promoting the installation and expulsion of the TMZ at Bordeaux have been delimited, 250 and at least $350 \text{ m}^3 \text{ s}^{-1}$ respectively, showing the need to a higher “water effort” to expel the TMZ. Two hydrological indicators of the TMZ intensity have been defined: the duration of low water periods as indicator of the persistence of the TMZ, and water volume passing before and during the presence of the TMZ as indicator of the TMZ turbidity level. Higher water volume contributes to move more efficiently the TMZ and to expel higher quantity of remained mobile mud, resulting in less concentrated TMZ. The existence of mobile mud during and after the TMZ presence is confirmed through turbidity-discharge hysteresis patterns over different scales, which reveal the local or remote location of the sediment source. More particularly, these hysteresis patterns over river floods can serve as an indicator of the rhythm of downstream expulsion of mobile mud.

The extrapolation of hydrological conditions suggests an intensification of the TMZ occurrence in the fluvial Gironde during the last decades and could be used to evaluate future scenarios. This can be very useful to water management strategies in order to address the global change impacts as Garonne 2050 (www.garonne2015.fr). The estimate of discharge thresholds of TMZ installation and expulsion is also of great interest to local public authorities. By example, a partner of the MAGEST network, the SMEAG, is in charge to maintain a minimum discharge level of the Garonne to ensure a water quality favourable to ecosystems (<http://www.smeag.fr/plan-de-gestion-detiage-garonne-ariege.html>). Their criteria to release water stocks from upstream dams are the levels of dissolved oxygen in Bordeaux waters. It appears from this work that the discharge threshold, below $100\text{--}110 \text{ m}^2 \text{ s}^{-1}$, actually retained

by the SMEAG is far too low to prevent the installation of the TMZ, and the subsequent problems (dissolved oxygen consumption, pollutant accumulation . . .).

Finally this work will be useful to improve the calibration of numerical models coupling hydrodynamics and suspended sediment transport. Numerical simulations will allow evaluate the turbidity in the upper estuary for different hydrological and climate scenarios (natural and anthropogenic), including the effect of morphological changes.

Acknowledgements. I. Jalón-Rojas thanks the Agence de l'Eau Adour-Garonne (AEAG) and the Aquitaine Region for the financial support of her PhD grant. The MAGEST network is financially supported by the following organisms: AEAG (Agence de l'Eau Adour-Garonne); SMID-DEST (Syndicat Mixte pour le Développement Durable de l'ESTuaire de la Gironde); SMEAG (Syndicat Mixte d'Etudes et d'Aménagement de la Garonne); EPIDOR (Etablissement Public Interdépartemental de la Dordogne); EDF; GPMB (Grand Port Maritime de Bordeaux); CUB (Communauté Urbaine de Bordeaux); Conseil Régional Aquitaine; CG-33 (Conseil Général de Gironde); Ifremer; CNRS; Université de Bordeaux. The authors thank also the support of the OASU (Observatoire Aquitain des Sciences de l'Univers) through the SOLAQUI (Service d'Observation du Littoral AQUitain) program. MAGEST is a contribution to the CNRS observation program DYNALIT.

References

- Allen, G. P.: Déplacements saisonniers de la lentille de "crème de vase" dans l'estuaire de la Gironde, C. Roy. Acad. Sc. Paris, 273, 2429–2431, 1971.
- Allen, G. P. and Castaing, P.: Suspended sediment transport from the Gironde estuary (France) onto the adjacent continental shelf, Mar. Geol., 14, 47–53, 1973.
- Allen, G. P., Sauzay, G., and Castaing, P.: Transport and deposition of suspended sediment in the Gironde Estuary, France, in: Estuarine Processes, 2nd edn., edited by: Wiley, M., Academic Press, New York, 63–81, 1977.
- Allen, G. P., Salomon, J. C., Bassoullet, P., Du Penhoat, Y., and De Grandpré, C.: Effects of tides on mixing and suspended sediment transport in macrotidal estuaries, Sediment. Geol., 26, 69–90, 1980.

Turbidity in the fluvial Gironde Estuary

I. Jalón-Rojas et al.

Title Page

Abstract

Introduction

Conclusions

References

Tables

Figures

◀

▶

◀

▶

Back

Close

Full Screen / Esc

Printer-friendly Version

Interactive Discussion



**Turbidity in the fluvial
Gironde Estuary**

I. Jalón-Rojas et al.

[Title Page](#)[Abstract](#)[Introduction](#)[Conclusions](#)[References](#)[Tables](#)[Figures](#)[⏪](#)[⏩](#)[◀](#)[▶](#)[Back](#)[Close](#)[Full Screen / Esc](#)[Printer-friendly Version](#)[Interactive Discussion](#)

- Bonneton, P., Bonneton, N., Parisot, J.-P., and Castelle, B.: Tidal bore dynamics in funnel-shaped estuaries, *J. Geophys. Res.*, doi:10.1002/2014JC010267, in press, 2015.
- Castaing, P. and Allen, G. P.: Mechanisms controlling seaward escape of suspended sediment from the Gironde: a macrotidal estuary in France, *Mar. Geol.*, 40, 101–118, 1981.
- 5 Castaing, P., Etcheber, H., Sottolichio, A., and Cappe, R.: Evaluation de l'évolution hydrodologique et sédimentaire du système Garonne-Dordogne-Gironde, Tech. rep., Rapport Agence de l'eau Adour-Garonne, Université de Bordeaux, Bordeaux, France, 2006.
- Contreras, E. and Polo, M. J.: Measurement frequency and sampling spatial domains required to characterize turbidity and salinity events in the Guadalquivir estuary (Spain), *Nat. Hazards Earth Syst. Sci.*, 12, 2581–2589, doi:10.5194/nhess-12-2581-2012, 2012.
- 10 De-Jonge, V. N., Schuttelaars, H. M., Van-Beusekom, J. E., Talke, S. A., and De-Swart, H. E.: The influence of channel deepening on estuarine turbidity levels and dynamics, as exemplified by the Ems estuary, *Estuar. Coast. Shelf S.*, 139, 46–59, doi:10.1016/j.ecss.2013.12.030, 2014.
- 15 Doxaran, D., Froidefond, J. M., Castaing, P., and Babin, M.: Dynamics of the turbidity maximum zone in a macrotidal estuary (the Gironde, France): observations from field and MODIS satellite data, *Estuar. Coast. Shelf S.*, 81, 321–332, doi:10.1016/j.ecss.2008.11.013, 2009.
- Dyer, K. R.: Fine sediment particle transport in estuaries, in: *Physical Process in Estuaries*, edited by: Dronkers, J. and van Leussen, W., Springer-Verlag, Berlin Heidelberg, Germany, 427–445, 1988.
- 20 Etcheber, H., Schmidt, S., Sottolichio, A., Maneux, E., Chabaux, G., Escalier, J.-M., Wennekes, H., Derriennic, H., Schmeltz, M., Quémener, L., Repecaud, M., Woerther, P., and Castaing, P.: Monitoring water quality in estuarine environments: lessons from the MAGEST monitoring program in the Gironde fluvial-estuarine system, *Hydrol. Earth Syst. Sci.*, 15, 831–840, doi:10.5194/hess-15-831-2011, 2011.
- 25 Fettweis, M., Sas, M., and Monbaliu, J.: Seasonal, neap-spring and tidal variation of cohesive sediment concentration in the Scheldt Estuary, Belgium, *Estuar. Coast. Shelf S.*, 47, 21–36, doi:10.1006/ecss.1998.0338, 1998.
- 30 Fettweis, M., Monbaliu, J., Baeye, M., Nechad, B., and Van den Eynde, D.: Weather and climate induced spatial variability of surface suspended particulate matter concentration in the North Sea and the English Channel, *Methods in Oceanography*, 3–4, 25–39, doi:10.1016/j.mio.2012.11.001, 2012.

**Turbidity in the fluvial
Gironde Estuary**

I. Jalón-Rojas et al.

[Title Page](#)[Abstract](#)[Introduction](#)[Conclusions](#)[References](#)[Tables](#)[Figures](#)[|◀](#)[▶|](#)[◀](#)[▶](#)[Back](#)[Close](#)[Full Screen / Esc](#)[Printer-friendly Version](#)[Interactive Discussion](#)

Fontugne, M. R. and Jouanneau, J.-M.: Modulation of the particulate organic carbon flux to the ocean by a macrotidal estuary: evidence from measurements of carbon isotopes in organic matter from the Gironde system, *Estuar. Coast. Shelf S.*, 24, 377–387, 1987.

Garel, E., Nunes, S., Neto, J. M., Fernandes, R., Neves, R., Marques, J. C., and Ferreira, O.: The autonomous Simpatico system for real-time continuous water-quality and current velocity monitoring: examples of application in three Portuguese estuaries, *Geo-Mar. Lett.*, 29, 331–341, doi:10.1007/s00367-009-0147-5, 2009.

Grabemann, I. and Krause, G.: Response of the turbidity maximum in the Weser Estuary to pulses in freshwater runoff and to storms, in: *Physics of Estuaries and Coastal Seas*, edited by: Dronkers, J. and Scheffers, M., Balkema, Rotterdam, the Netherlands, 83–92, 1998.

Grabemann, I. and Krause, G.: On different time scales of suspended matter dynamics in the Weser Estuary, *Estuaries*, 24, 688–698, 2001.

Grabemann, I., Uncles, R. J., Krause, G., and Stephens, J. A.: Behaviour of turbidity maxima in the Tamar (U.K.) and Weser (F.R.G.) Estuaries, *Estuar. Coast. Shelf S.*, 45, 235–246, doi:10.1006/ecss.1996.0178, 1997.

Guézennec, L., Lafite, R., Dupont, J. P., Meyer, R., and Boust, D.: Hydrodynamics of suspended particulate matter in the tidal freshwater zone of a macrotidal Estuary (The Seine Estuary, France), *Estuaries*, 22, 717–727, doi:10.2307/1353058, 1999.

Hendrickx, F. and Sauquet, E.: Impact of warming climate on water management for the Ariège River basin (France), *Hydrolog. Sci. J.*, 58, 976–993, doi:10.1080/02626667.2013.788790, 2013.

Jay, D. A. and Musiak, J. D.: Particle trapping in estuarine tidal flows, *J. Geophys. Res.*, 99, 20445–20461, 1994.

Klein, M.: Anti clockwise hysteresis in suspended sediment concentration during individual storms: Holbeck Catchment; Yorkshire, England, *Catena*, 11, 251–257, 1984.

Lanoux, A., Etcheber, H., Schmidt, S., Sottolichio, A., Chabaud, G., Richard, M., and Abril, G.: Factors contributing to hypoxia in a highly turbid, macrotidal estuary (the Gironde, France), *Environmental Science: Processes and Impacts*, 15, 585–595, doi:10.1039/c2em30874f, 2013.

López-Tarazón, J. A., Batalla, R. J., Vericat, D., and Francke, T.: Suspended sediment transport in a highly erodible catchment: the River Isábena (Southern Pyrenees), *Geomorphology*, 109, 210–221, doi:10.1016/j.geomorph.2009.03.003, 2009.

**Turbidity in the fluvial
Gironde Estuary**

I. Jalón-Rojas et al.

[Title Page](#)[Abstract](#)[Introduction](#)[Conclusions](#)[References](#)[Tables](#)[Figures](#)[⏪](#)[⏩](#)[◀](#)[▶](#)[Back](#)[Close](#)[Full Screen / Esc](#)[Printer-friendly Version](#)[Interactive Discussion](#)

- Mazzega, P., Therond, O., Debril, T., March, H., Sibertin-Blanc, C., Lardy, R., and Sant'ana, D.: Critical multi-level governance issues of integrated modelling: an example of low-water management in the Adour-Garonne basin (France), *J. Hydrol.*, 519, 2515–2526, doi:10.1016/j.jhydrol.2014.09.043, 2014.
- 5 Mitchell, S.: Turbidity maxima in four macrotidal estuaries, *Ocean Coast. Manage.* 79, 62–69, doi:10.1016/j.ocecoaman.2012.05.030, 2013.
- Mitchell, S. B. and Uncles, R. J.: Estuarine sediments in macrotidal estuaries: future research requirements and management challenges, *Ocean Coast. Manage.* 79, 97–100, doi:10.1016/j.ocecoaman.2012.05.007, 2013.
- 10 Pontee, N., Whitehead, P., and Hayes, C.: The effect of freshwater flow on siltation in the Humber Estuary, north east UK, *Estuar. Coast. Shelf S.*, 60, 241–249, doi:10.1016/j.ecss.2004.01.002, 2004.
- Romaña, A.: Estuaire de la Gironde. Campagnes “Libellule”. Distribution longitudinale des paramètres mesurés et calculés, Tech. rep., Rapport Ifremer, Dépt. Env. Litt. et Gest. du Milieu Marin, 1983.
- 15 Saari, H. K., Schmidt, S., Castaing, P., Blanc, G., Sautour, B., Masson, O., and Cochran, J. K.: The particulate $^{7}\text{Be}/^{210}\text{Pb}_{\text{ex}}$ and $^{234}\text{Th}/^{210}\text{Pb}_{\text{ex}}$ activity ratios as tracers for tidal-to seasonal particle dynamics in the Gironde estuary (France): implications for the budget of particle-associated contaminants, *Sci. Total Environ.*, 408, 4784–4794, doi:10.1016/j.scitotenv.2010.07.017, 2010.
- 20 Schmidt, S., Ouamar, L., Cosson, B., Lebleu, P., and Derriennic, H.: Monitoring turbidity as a surrogate of suspended particulate load in the Gironde Estuary: the impact of particle size on concentration estimates, in: *ISOBAY*, Université De Bordeaux, France, 17 pp., 2014.
- Schrottke, K., Becker, M., Bartholomä, A., Flemming, B. W., and Hebbeln, D.: Fluid mud dynamics in the Weser estuary turbidity zone tracked by high-resolution side-scan sonar and parametric sub-bottom profiler, *Geo-Mar. Lett.*, 26, 185–198, doi:10.1007/s00367-006-0027-1, 2006.
- 25 Schuttelaars, H. M., de Jonge, V. N., and Chernetsky, A.: Improving the predictive power when modelling physical effects of human interventions in estuarine systems, *Ocean Coast. Manage.*, 79, 70–82, doi:10.1016/j.ocecoaman.2012.05.009, 2013.
- 30 Sottolichio, A. and Castaing, P.: A synthesis on seasonal dynamics of highly-concentrated structures in the Gironde estuary, *C.R. Acad. Sci. II A*, 329, 795–800, doi:10.1016/S1251-8050(00)88634-6, 1999.

**Turbidity in the fluvial
Gironde Estuary**

I. Jalón-Rojas et al.

[Title Page](#)[Abstract](#)[Introduction](#)[Conclusions](#)[References](#)[Tables](#)[Figures](#)[I◀](#)[▶I](#)[◀](#)[▶](#)[Back](#)[Close](#)[Full Screen / Esc](#)[Printer-friendly Version](#)[Interactive Discussion](#)

Sottolichio, A., Castaing, P., Etcheber, H., Maneux, E., Schmeltz, M., and Schmidt, S.: Observations of suspended sediment dynamics in a highly turbid macrotidal estuary, derived from continuous monitoring, *J. Coastal Res.*, SI64, 1579–1583, 2011.

StataCorp: Stata Statistical Software: Release 12, StataCorp, College Station, Texas, USA, 2011.

Talke, S. A., de Swart, H. E., and Schuttelaars, H. M.: Feedback between residual circulations and sediment distribution in highly turbid estuaries: an analytical model, *Cont. Shelf Res.*, 29, 119–135, doi:10.1016/j.csr.2007.09.002, 2009.

Uncles, R. J., Easton, A. E., Griffiths, M. L., Harris, C., Howland, R. J. M., King, R. S., Morris, A. W., and Plummer, D. H.: Seasonality of the turbidity maximum in the Humber Ouse Estuary, UK, *Mar. Pollut. Bull.*, 37, 206–215, 1998.

Uncles, R. J., Stephens, J. A., and Smith, R. E.: The dependence of estuarine turbidity on tidal intrusion length, tidal range and residence time, *Cont. Shelf Res.*, 22, 1835–1856, doi:10.1016/S0278-4343(02)00041-9, 2002.

Uncles, R. J., Stephens, J. A., and Law, D. J.: Turbidity maximum in the macrotidal, highly turbid Humber Estuary, UK: flocs, fluid mud, stationary suspensions and tidal bores, *Estuar. Coast. Shelf S.*, 67, 30–52, doi:10.1016/j.ecss.2005.10.013, 2006.

Uncles, R. J., Stephens, J. A., and Harris, C.: Towards predicting the influence of freshwater abstractions on the hydrodynamics and sediment transport of a small, strongly tidal estuary: the Devonshire Avon, *Ocean Coast. Manage.* 79, 83–96, doi:10.1016/j.ocecoaman.2012.05.006, 2013.

Williams, G. P.: Sediment concentration vs. water discharge during single hydrologic events in rivers, *J. Hydrol.*, 111, 89–106, doi:10.1016/0022-1694(89)90254-0, 1989.

Winterwerp, J. C. and Wang, Z. B.: Man-induced regime shifts in small estuaries – I: theory, *Ocean Dynam.*, 63, 1279–1292, doi:10.1007/s10236-013-0662-9, 2013.

Yang, Y., Li, Y., Sun, Z., and Fan, Y.: Suspended sediment load in the turbidity maximum zone at the Yangtze River Estuary: the trends and causes, *J. Geogr. Sci.*, 24, 129–142, doi:10.1007/s11442-014-1077-3, 2013.

Table 1. Discharge and turbidity characteristics of flood events for the period 2005–mid 2014 in the tidal Garonne River (Bordeaux and Portets stations). Flood events were numbered by f plus a number according to Fig. 3. Hysteresis loops were classified as: [C] clockwise; [CC] counterclockwise; [M] mixed; [No] no trend. Mixed loops with a clear clockwise [M(C)] or counterclockwise [M(CC)] predominance were specified. Floods without turbidity record were included to facilitate the interpretation of the hysteresis succession.

	Date	Q_{\max} ($\text{m}^3 \text{s}^{-1}$)	Bordeaux		Portets	
			T_{\max} (NTU)	Hysteresis	T_{\max} (NTU)	Hysteresis
2006						
	10.12.2005	865	–	–	–	–
	03.01.2006	938	–	–	–	–
f1	31.01.2006	1820	989	M(C)	908	CC
f2	12.03.2006	4160	1446	CC	1326	CC
2007						
f3	13.02.2007	2140	1460	C	975	M
f4	27.02.2007	1600	414	M(C)	292	M
f5	18.04.2007	1210	–	–	400	CC
f6	03.05.2007	953	349	C	–	–
f7	28.05.2007	1730	1794	CC	–	–
2008						
	11.12.2007	1270	–	–	–	–
f8	08.01.2008	1120	1008	C	313	M
f9	19.01.2008	2180	835	No	795	CC
	22.04.2008	3130	–	–	–	–
f10	28.05.2008	2640	495	CC	–	–
2009						
f11	03.11.2008	1450	2200	C	993	M(CC)
f12	06.12.2008	1830	476	CC	–	–
f13	25.01.2009	4750	1578	CC	–	–
f14	13.04.2009	1950	–	–	203	CC
	30.04.2009	2870	–	–	–	–

Title Page

Abstract

Introduction

Conclusions

References

Tables

Figures

I◀

▶I

◀

▶

Back

Close

Full Screen / Esc

Printer-friendly Version

Interactive Discussion



Turbidity in the fluvial Gironde Estuary

I. Jalón-Rojas et al.

Table 1. Continued.

	Date	Q_{\max} ($\text{m}^3 \text{s}^{-1}$)	Bordeaux T_{\max} (NTU)	Hysteresis	Portets T_{\max} (NTU)	Hysteresis
2010						
f15	16.01.2010	1880	747	M(CC)	–	–
f16	07.02.2010	1410	358	No	–	–
f17	02.04.2010	1070	471	M(C)	152	No
f18	06.05.2010	1770	971	M(CC)	474	CC
2011						
f19	24.12.2010	1480	425	M	–	–
f20	24.02.2011	1090	1598	M	(C)	164
f21	18.03.2011	2150	–	–	723	CC
2012						
	08.11.2012	1890	–	–	–	–
	07.01.2012	1390	–	–	–	–
f22	01.05.2012	1760	335	M	–	–
f23	23.05.2012	3110	963	CC	–	–
2013						
f24	07.12.2012	834	914	C	–	–
f25	21.01.2013	3460	1075	M	–	–
f26	09.03.2013	1150	175	CC	–	–
	31.03.2013	2510	–	–	–	–
f27	01.06.2013	4020	768	CC	–	–
f28	20.06.2013	1980	1304	CC	–	–

Title Page

Abstract

Introduction

Conclusions

References

Tables

Figures

I ◀

▶ I

◀

▶

Back

Close

Full Screen / Esc

Printer-friendly Version

Interactive Discussion



Turbidity in the fluvial Gironde Estuary

I. Jalón-Rojas et al.

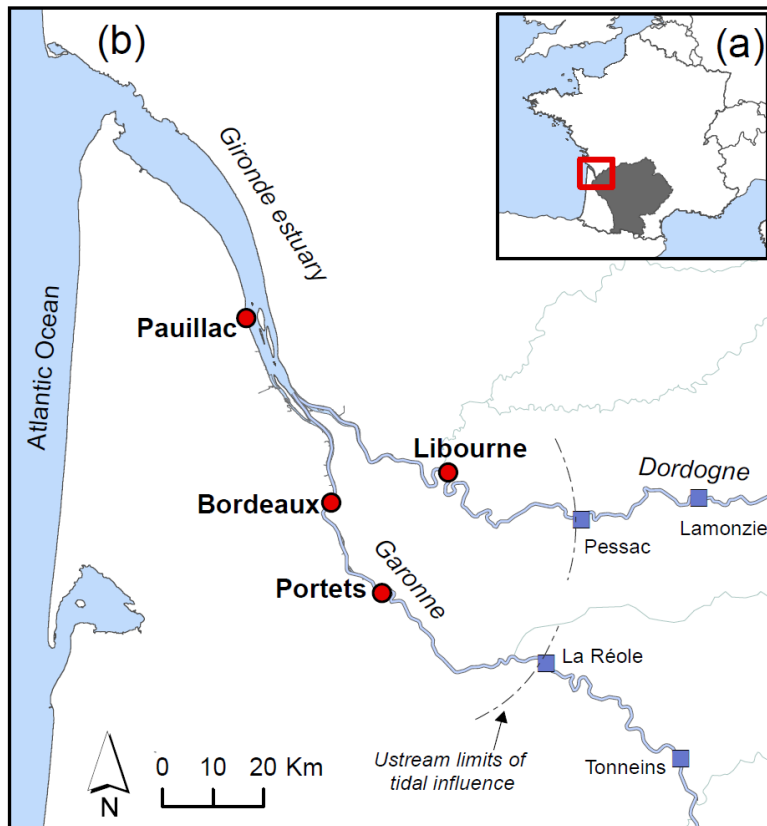


Figure 1. The Gironde fluvial-estuarine system: **(a)** location map (SW France), the grey area shows the watershed of Garonne and Dordogne; **(b)** the estuary with its main tributaries. Red circles locate the MAGEST stations; blue squares indicate the hydrometric stations.

Title Page

Abstract

Introduction

Conclusions

References

Tables

Figures

◀

▶

◀

▶

Back

Close

Full Screen / Esc

Printer-friendly Version

Interactive Discussion



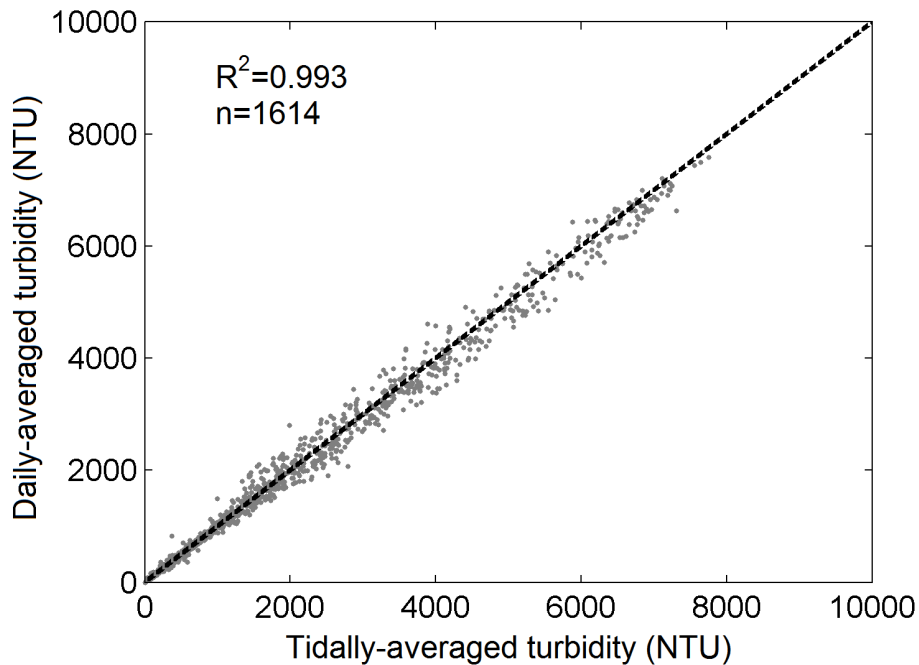


Figure 2. Comparison of tidally-averaged turbidity and daily-averaged turbidity for Bordeaux station showing the correlation coefficient (R^2).

Turbidity in the fluvial Gironde Estuary

I. Jalón-Rojas et al.

Title Page

Abstract

Introduction

Conclusions

References

Tables

Figures

◀

▶

◀

▶

Back

Close

Full Screen / Esc

Printer-friendly Version

Interactive Discussion



Turbidity in the fluvial Gironde Estuary

I. Jalón-Rojas et al.

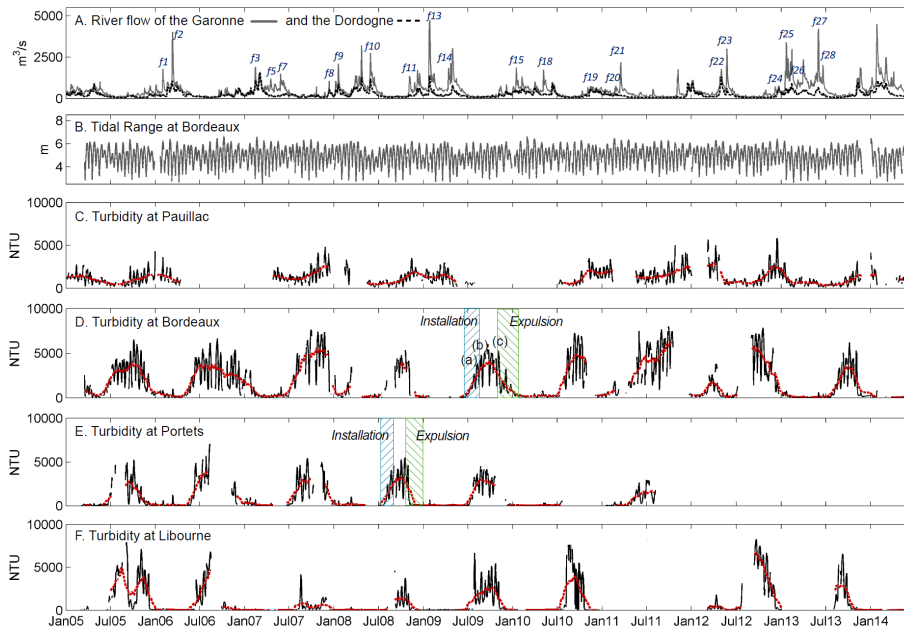


Figure 3. (a) Daily mean flow of the Garonne River and the Dordogne River showing the river flood events of Table 1; (b) tidal range recorded at Bordeaux tide gauge; and tidally-averaged turbidity at (c) Pauillac, (d) Bordeaux and (e) Libourne stations. Red dotted lines represent the low-pass filtered data performed with running averages in order to highlight the turbidity trends.

[Title Page](#)

Abstract	Introduction
Conclusions	References
Tables	Figures

⏪
⏩

⏴
⏵

[Back](#)
[Close](#)

[Full Screen / Esc](#)

[Printer-friendly Version](#)

[Interactive Discussion](#)



Turbidity in the fluvial Gironde Estuary

I. Jalón-Rojas et al.

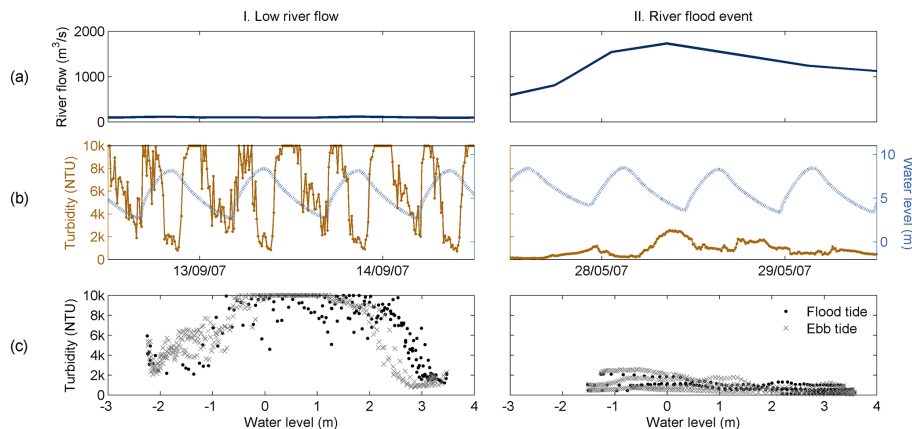


Figure 4. Examples of 48H raw data of **(a)** river flow, and **(b)** turbidity and water level (dotted lines) at Bordeaux for two contrasted hydrological conditions. The mean time step of river flow is hour, while turbidity and water level were recorded each 10 min. **(c)** Relationships between turbidity and water level records of the middle panels.

[Title Page](#)[Abstract](#)[Introduction](#)[Conclusions](#)[References](#)[Tables](#)[Figures](#)[⏪](#)[⏩](#)[⏴](#)[⏵](#)[Back](#)[Close](#)[Full Screen / Esc](#)[Printer-friendly Version](#)[Interactive Discussion](#)

Turbidity in the fluvial Gironde Estuary

I. Jalón-Rojas et al.

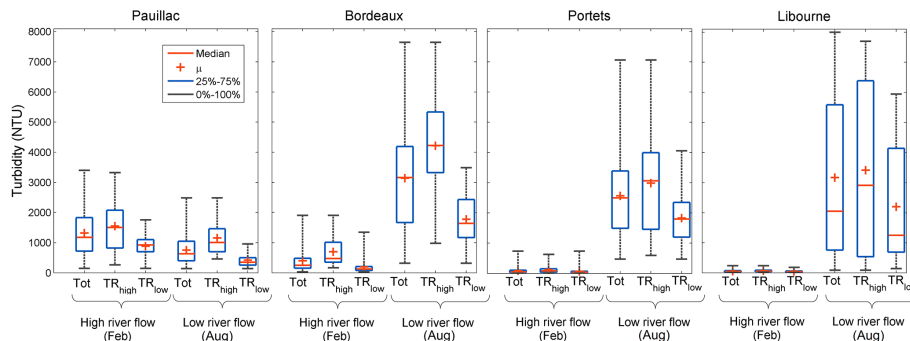


Figure 5. Mean (red cross), median (red bars), percentiles 25–75 (blue bars) and minimum–maximum (black bars) values of tidally-averaged turbidity depending on the season (months of February and August) and the tidal range (TR) in each MAGEST station. High and low tidal ranges correspond to values above the percentile 75 and below the percentile 25, respectively, of the entire TR dataset of each station.

Title Page

Abstract

Introduction

Conclusions

References

Tables

Figures

◀

▶

◀

▶

Back

Close

Full Screen / Esc

Printer-friendly Version

Interactive Discussion



Turbidity in the fluvial Gironde Estuary

I. Jalón-Rojas et al.

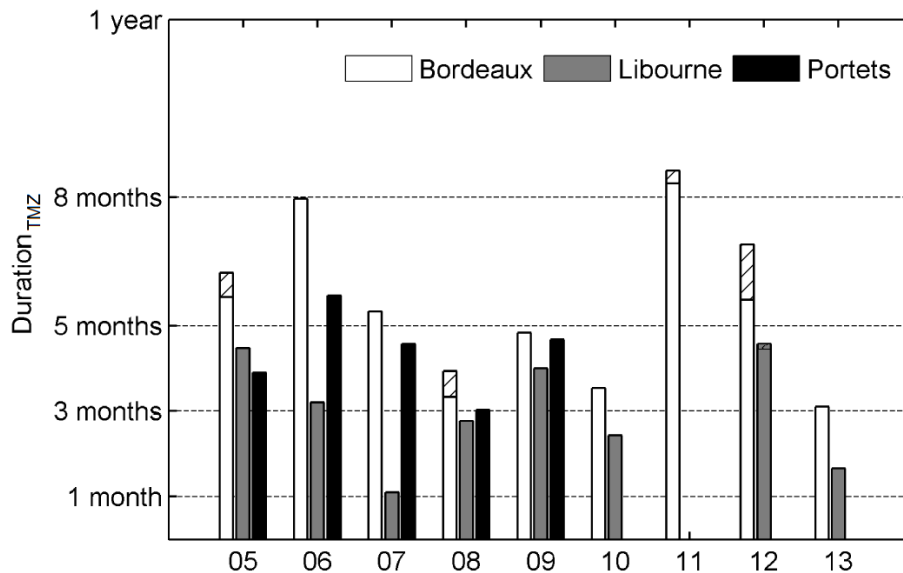


Figure 6. Duration of the TMZ presence per year at the three tidal rivers stations. Striped bars designate the duration of the TMZ when it appears in winter: 17, 18, 9 and 39 days respectively in the years 2005, 2008, 2011 and 2012 at Bordeaux; 6 days in the year 2012 at Libourne.

Title Page

Abstract

Introduction

Conclusions

References

Tables

Figures

◀

▶

◀

▶

Back

Close

Full Screen / Esc

Printer-friendly Version

Interactive Discussion



Turbidity in the fluvial Gironde Estuary

I. Jalón-Rojas et al.

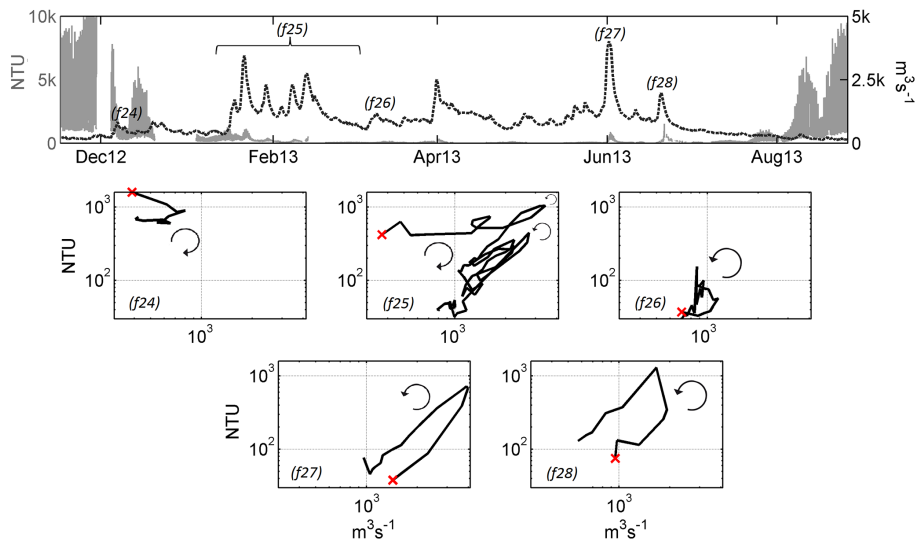


Figure 7. Relationship between discharge and turbidity and corresponding hysteresis patterns for the successive floods occurring since the departure, in December 2012, and the return of the TMZ, in August 2013.

[Title Page](#)
[Abstract](#)
[Introduction](#)
[Conclusions](#)
[References](#)
[Tables](#)
[Figures](#)
[⏪](#)
[⏩](#)
[◀](#)
[▶](#)
[Back](#)
[Close](#)
[Full Screen / Esc](#)
[Printer-friendly Version](#)
[Interactive Discussion](#)


Turbidity in the fluvial Gironde Estuary

I. Jalón-Rojas et al.

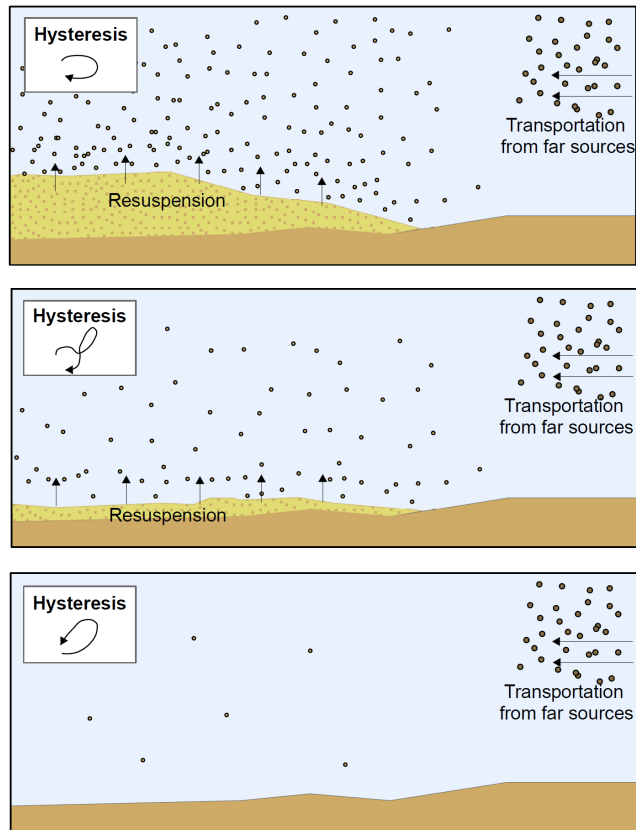


Figure 8. Schematic representation of suspended sediment dynamics in tidal rivers associated to the different types of hysteresis (clockwise, anticlockwise, mixed) during river floods.

Title Page

Abstract

Introduction

Conclusions

References

Tables

Figures

◀

▶

◀

▶

Back

Close

Full Screen / Esc

Printer-friendly Version

Interactive Discussion



Turbidity in the fluvial Gironde Estuary

I. Jalón-Rojas et al.

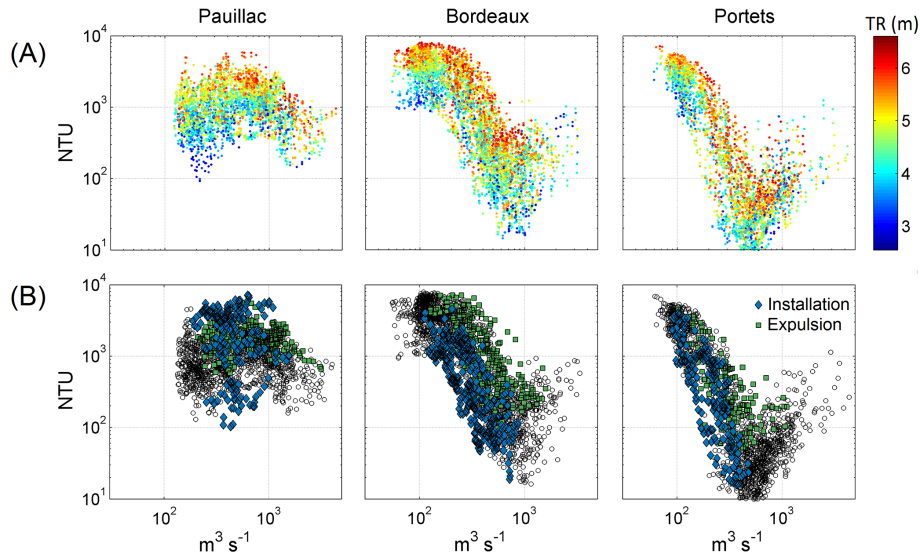


Figure 9. Tidally-averaged turbidity **(a)** and daily-averaged turbidity **(b)** as a function of 3 days averaged river flow for the MAGEST stations of Pauillac, Bordeaux and Porters (log-log representation). **(a):** values were classified in function of tidal range (TR). **(b):** values corresponding to the periods of installation (blue diamonds) and expulsion (green square) of the TMZ were differentiated.

Title Page

Abstract

Introduction

Conclusions

References

Tables

Figures

◀

▶

◀

▶

Back

Close

Full Screen / Esc

Printer-friendly Version

Interactive Discussion



Turbidity in the fluvial Gironde Estuary

I. Jalón-Rojas et al.

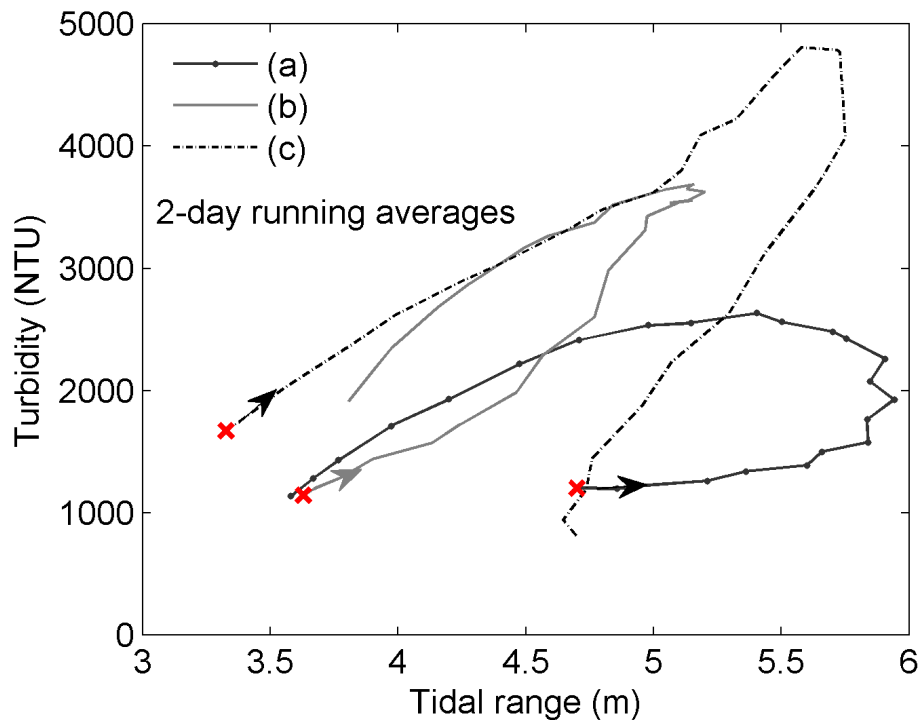


Figure 10. Turbidity as a function of tidal rage (2 days running averages) for three neap-spring-neap cycles (see the cycles in Fig. 3) during a period of **(a)** installation, **(b)** presence and **(c)** expulsion of the TMZ.

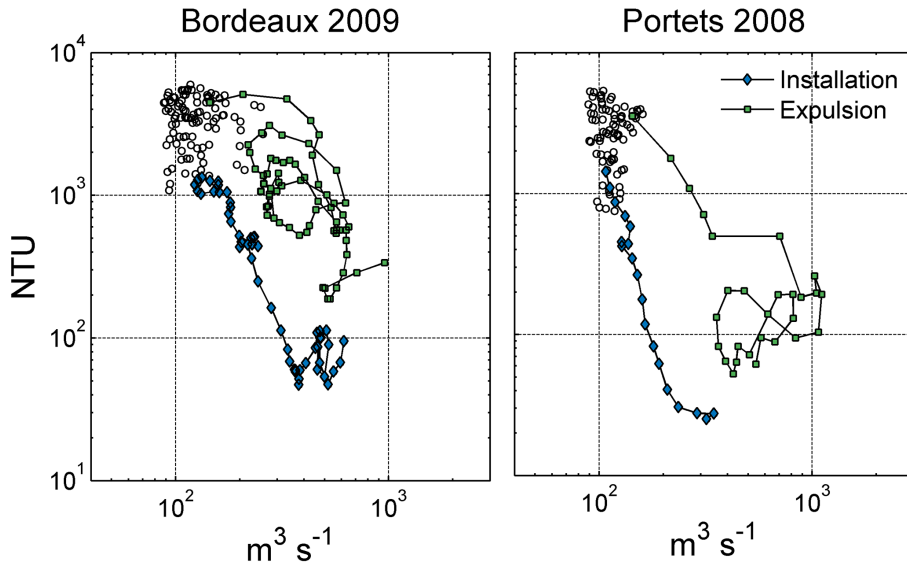


Figure 11. Examples of clockwise Discharge/Turbidity hysteresis curves during the transition periods of installation and expulsion of the TMZ (see these periods in Fig. 3).

Discussion Paper | Discussion Paper | Discussion Paper | Discussion Paper | Discussion Paper

Title Page

Abstract

Introduction

Conclusions

References

Tables

Figures

◀

▶

◀

▶

Back

Close

Full Screen / Esc

Printer-friendly Version

Interactive Discussion



Turbidity in the fluvial Gironde Estuary

I. Jalón-Rojas et al.

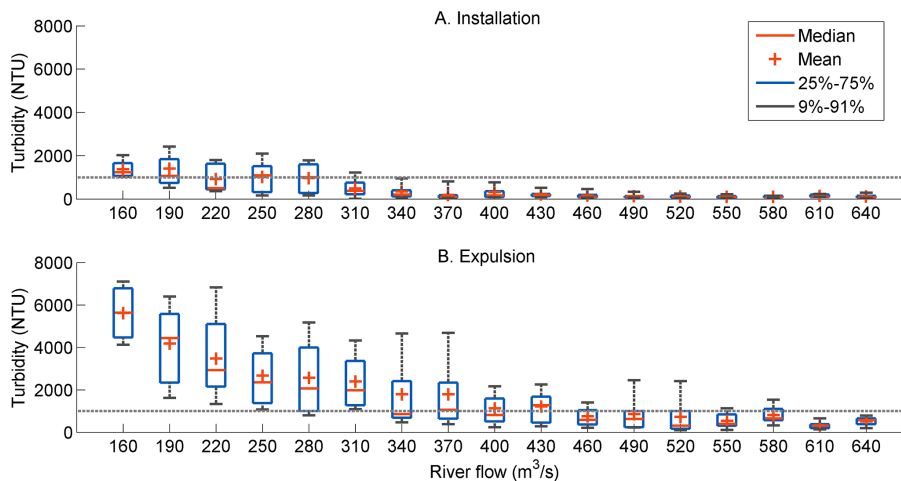


Figure 12. Mean (red cross), median (red bars), percentiles 25–75 (blue bars) and percentiles 9–91 (black bars) values of tidally-averaged turbidity per $30 \text{ m}^3 \text{ s}^{-1}$ intervals of river flow during the installation and expulsion of the TMZ.

Title Page

Abstract

Introduction

Conclusions

References

Tables

Figures

◀

▶

◀

▶

Back

Close

Full Screen / Esc

Printer-friendly Version

Interactive Discussion



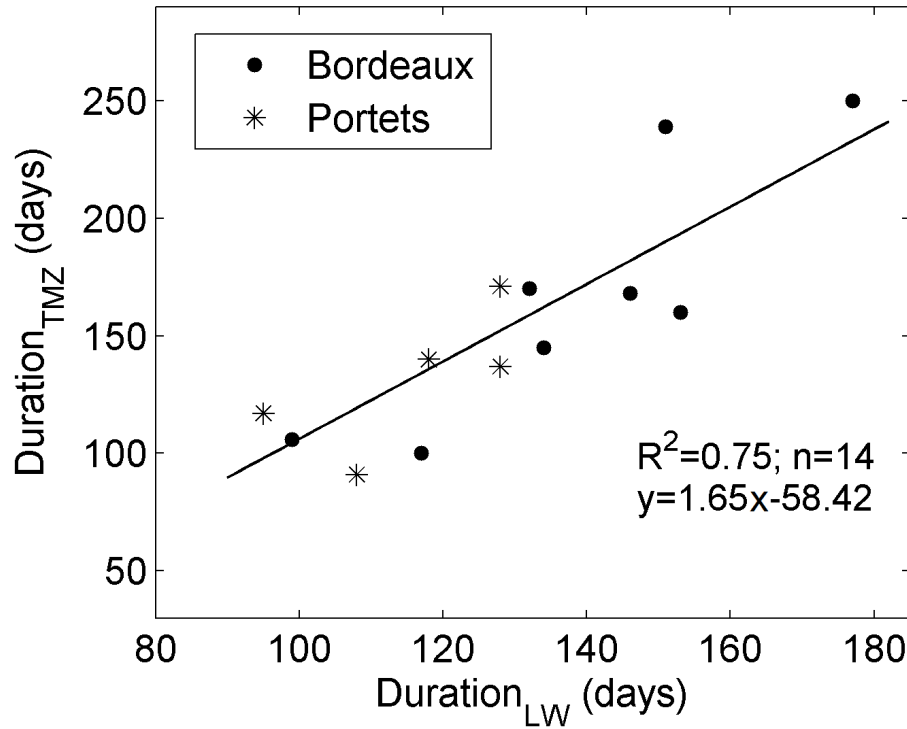


Figure 13. Duration of the TMZ presence as a function of the number of days per year where the river flow was below $250 \text{ m}^3 \text{ s}^{-1}$ at Bordeaux station and $160 \text{ m}^3 \text{ s}^{-1}$ at Portets station.

Title Page

Abstract	Introduction
Conclusions	References
Tables	Figures

◀
▶

◀
▶

[Back](#)
[Close](#)

Full Screen / Esc

Printer-friendly Version

Interactive Discussion



Turbidity in the fluvial Gironde Estuary

I. Jalón-Rojas et al.

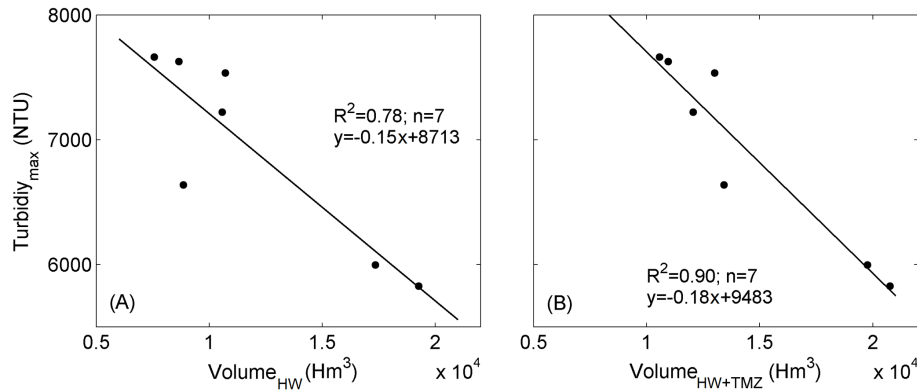


Figure 14. Turbidity maxima of the TMZ as a function of the water volume passed: **(a)** during the previous wet period; and **(b)** during the previous wet period + the presence of the TMZ. Portets is not considered as it was not possible to estimate Turbidity_{max} due to the number of missing data.

Title Page

Abstract

Introduction

Conclusions

References

Tables

Figures

⏪

⏩

◀

▶

Back

Close

Full Screen / Esc

Printer-friendly Version

Interactive Discussion



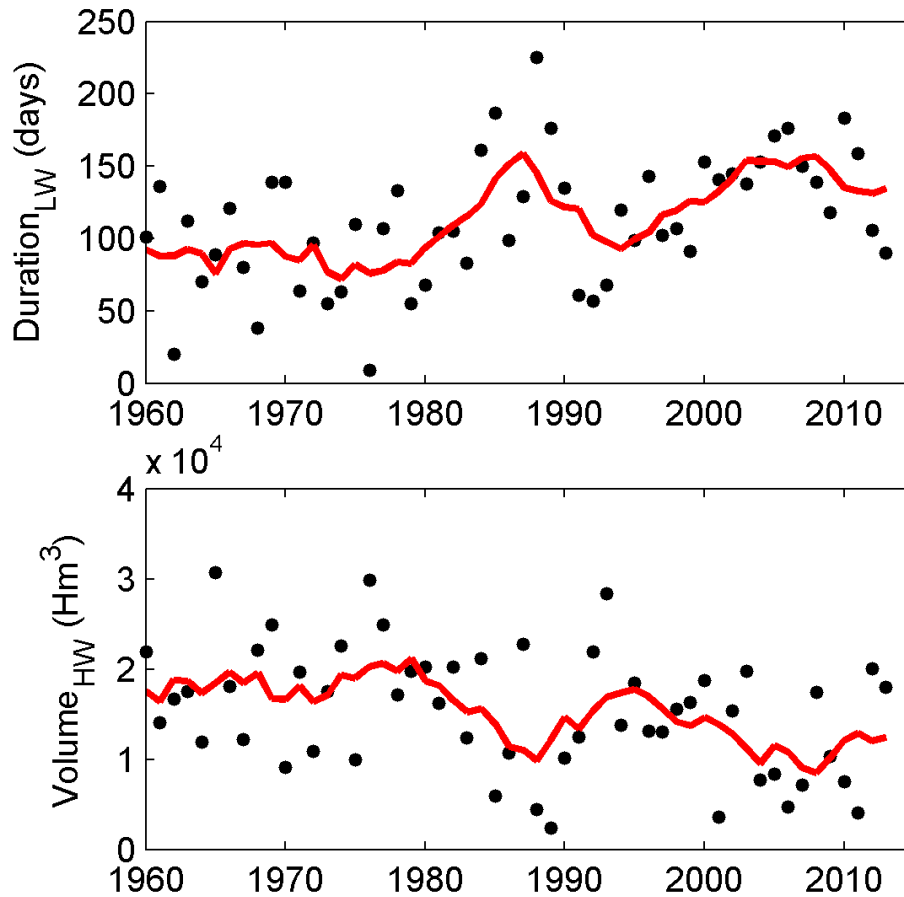


Figure 15. Evolution of the duration of low water period and the water volume during high water periods between 1960 and 2013 (calculated from discharge data available on <http://www.hydro.eaufrance.fr/>); red lines represent the 5 days running averages in order to highlight the trends.

[Title Page](#)

Abstract	Introduction
Conclusions	References
Tables	Figures

[◀](#)
[▶](#)

[◀](#)
[▶](#)

[Back](#)
[Close](#)

[Full Screen / Esc](#)

[Printer-friendly Version](#)

[Interactive Discussion](#)

