

1 Dear reviewer,

2 thank you for all comments which substantially helped improve our paper. Regarding the

3 additional minor comments, we accepted all of them apart from the last one; we agree that

4 Figure 7 is rather difficult but on the contrary, if we separated the three types of extremes,

5 their coincidence would be less obvious.

6 The text at the *line 28 page 8 – line 3 page 9* refers to only a draft version of the FEI; we

7 decided to remove it after your comment because we find the paragraph redundant.

8 Thank you for the comment regarding the confusing mix of the indices introduction and the

9 case study in Sect. 2. We can hardly separate the general statements from examples

10 demonstrating them; nevertheless, we improved the text by unifying verb tenses (present for

11 the general statements, past for the case study).

12 The improved text follows.

13

Novel indices for the comparison of precipitation extremes and floods; an example from the Czech territory

M. Müller^{1,2}, M. Kašpar¹, A. Valeriánová³, L. Crhová³, E. Holtanová³, and B. Gvoždíková²

[1]{Institute of Atmospheric Physics AS CR, Prague, Czech Republic}

[2]{Charles University, Faculty of Science, Prague, Czech Republic}

[3]{Czech Hydrometeorological Institute, Prague, Czech Republic}

Correspondence to: M. Müller (muller@ufa.cas.cz)

Abstract

The paper presents three indices for evaluation of hydrometeorological extremes, considering them as areal precipitation events and trans-basin floods. In contrast to common precipitation indices, the weather extremity index (WEI) reflects not only the highest precipitation amounts at individual gauges but also the rarity of the amounts, the size of the affected area, and the duration of the event. Besides that, the aspect of precipitation seasonality was considered when defining the weather abnormality index (WAI) which enables the detection of precipitation extremes throughout the year. The precipitation indices are complemented with the flood extremity index (FEI) employing peak discharge data. A unified design of the three indices, based on return periods of station data, enables to compare easily inter-annual and seasonal distributions of precipitation extremes and large floods.

Odstraněno: were

The indices were employed in evaluation of 50 hydrometeorological extremes of each type (extreme precipitation events, seasonally abnormal precipitation events, and large floods) during the period 1961-2010 in the Czech Republic. A preliminary study of discrepancies among historic values of the indices indicated that variations in the frequency and/or magnitude of floods can generally be due not only to variations in the magnitude of precipitation events but also to variations in their seasonal distribution and other factors, primarily the antecedent saturation.

Odstraněno: s

Odstraněno: The events could be further studied with respect to circulation conditions, for example, by the circulation extremity index.

1 Introduction

Precipitation is extensively studied due to its impacts on the hydrology, geomorphology, and economy of a given region. Precipitation extremes are of special interest because impacts rapidly increase with the precipitation extremity. There are three main concepts of extremity: severity, intensity, and rarity (Stephenson, 2008). Evaluation of the extremity of past events enables to determine return periods of heavy precipitation and to estimate the probable maximum precipitation (Řezáčová, 2005b). Currently, the main challenge in precipitation climatology is understanding past and possible future changes in the frequency and/or magnitude of precipitation extremes (e.g., Alexander et al., 2006). These changes could alter the frequency and/or magnitude of consequent floods. To properly assess this linkage, we need to define quantitative indices to investigate the coupling between precipitation extremes and flood events.

Floods are frequently evaluated by their severity, which can be defined as the amount of socioeconomic loss or number of casualties. For example, Barredo (2007) selected 23 flash floods and 21 river floods during the period of 1950-2005 in Europe based on two criteria: losses exceeding 0.005 % of EU GDP and/or more than 70 casualties. In contrast, severity can hardly be used for evaluation of precipitation events because the damage is usually produced not directly by the precipitation but by subsequent phenomena (floods, landslides, etc.). Moreover, factors of exposure and vulnerability can produce serious discrepancies between causes and consequences.

The concept of intensity better corresponds to physical causes; thus, it is more convenient for comparison between precipitation extremes and floods. Rodier and Roche (1984) and lately Herschy (2003) assessed the world's maximum floods with respect to their maximum instantaneous discharges. To compare the extremity of floods on various rivers, they used the Francou index, which normalizes the common logarithm of maximum discharge by the common logarithm of the catchment area. Not surprisingly, maximum floods were located in the rainiest regions.

The standard approach to the evaluation of precipitation intensity is to search data series from individual gauges using commonly accepted indices (Zhang et al., 2011), mainly those defined by the Expert Team on Climate Change Detection and Indices (ETCCDI). According to ETCCDI, precipitation extremes can be defined as days with maximum one-day (P_1) or five-day (P_5) precipitation total in a period. Nevertheless, the duration of events can vary

widely, and the precipitation intensity usually fluctuates during the event. Begueria et al. (2009) partly took account of this fact; they used declustering of daily precipitation totals to distinguish individual precipitation events and characterized them not only by magnitude and duration but also by peak intensity.

Even more important is the spatial aspect of precipitation events. They always affect a certain area; thus, precipitation extremes should be considered to be “regional events” (Ren et al., 2012). The latter approach is necessary if the intensity of precipitation and floods is to be compared, because the size of the affected area influences the hydrological response. In our previous paper (Kašpar and Müller, 2008), we used the concept of areal precipitation intensity and evaluated precipitation events based on the weighted average of daily areal precipitation totals on three consecutive days. Nevertheless, Konrad (2001) demonstrated that the extremity of an event depends on the size of the considered region. As a result, the areal average disadvantages events that were violent but affected only a part of the region over which the mean is taken (e.g., an administrative unit, a catchment).

Based on the concept of intensity, extreme events occur mainly in regions that are prone to heavy rains (in the Czech Republic, such regions are along the northern state border because of the orographic precipitation enhancement). In order to reflect regional climatic differences, the concept of rarity is applied; extreme precipitation and floods can thus be detected in the whole studied region. The concept is frequently used with regard to floods, and the intensity (magnitude of the peak flow) is usually compared with return levels. If a set of extreme floods is studied, they are defined as discharges with return periods exceeding a threshold. Nevertheless, Uhlemann et al. (2010) noted that flood events frequently affect several independent catchments and introduced the concept of trans-basin floods. We adopted and adapted this approach to our data because we compared flood extremity with precipitation, which also affects more than one catchment at a given time.

To enable this comparison, we propose indices that are based on the point estimates of return periods of precipitation totals and peak discharges and on spatial averaging of the values (Sects. 2.1 and 2.3). The method is further enriched by the aspect of precipitation abnormality with respect to the season (Sect. 2.2). We demonstrate the method using data from the Czech Republic and present three sets of events: precipitation extremes regardless and regarding of the season and extreme floods (Sect. 3.1). These sets are further compared with regard to their

Odstraněno: analogous to each other

1 inter-annual (Sect. 3.2) and seasonal (Sect. 3.3) distribution. The results obtained are
2 discussed in Sect. 4.

3

4 2 Proposed methods

5 We proposed three extremity indices that enable to compare the temporal distribution of
6 precipitation extremes and floods. The indices are based on point return period estimates of
7 precipitation totals and peak flows, respectively, spatial averaging of their values, and
8 optimizing the areal extent and the duration of individual events. [Table 1 summarizes](#)
9 [acronyms for proposed indices and studied hydrometeorological extremes.](#)

10 2.1 Evaluation of precipitation extremity

11 The weather extremity index (WEI) presented in detail by Müller and Kašpar (2014) [is](#)
12 employed in searching for extreme precipitation events (EPEs). The WEI is based on return
13 periods of 1-day to several-day precipitation totals at individual sites. [In the presented study,](#)
14 [we used data from 711 rain gauges with data series at least 20 years long between 1961 and](#)
15 2010. The return periods were assessed using the generalized extreme value (GEV)
16 distribution (Hosking and Wallis, 1997) because it was confirmed to be a suitable model for
17 precipitation extremes in most regions of the Czech Republic (Kyselý and Pícek, 2007). The
18 GEV distribution was applied as the parametric model for annual maxima of the totals.
19 Parameters of the GEV distribution were estimated by means of the L-moment algorithm
20 (Hosking and Wallis, 1997) and the region-of-influence (ROI) method (Burn, 1990). The ROI
21 method is based on ‘homogenous regions’, in which all regional data, weighted by a
22 dissimilarity measure, are used for estimating parameters of the distribution of extremes at the
23 site of interest. Although the application of the ROI method makes the estimations more
24 robust than local analyses (Kyselý et al., 2011), we did not accept return periods longer than
25 1000 years. Instead, we set the return period to 1000 years.

Odstraněno: was

Odstraněno: w

26 The next step in the method [is](#) the interpolation of return periods from gauges in a regular
27 grid. [Experiments have demonstrated that the results are not affected by the resolution if it is](#)
28 [constant across all studied events; we used a horizontal resolution of 2 km in the presented](#)
29 [study.](#) Because of the exponential nature of the GEV distribution from which the return
30 periods are derived, [common logarithms of the return period are interpolated](#) instead of pure
31 return period values. We chose linear kriging as the interpolation method. Using an inversion

Odstraněno: was

Odstraněno: with a horizontal resolution of 2 km. (

Odstraněno: .

Odstraněno:)

Odstraněno: we interpolated their

transformation, cell values of N_{ti} are obtained; the value, represents the return period of the precipitation total accumulated during t days in a cell i . The cells are then sorted in decreasing order with respect to N_{ti} and considered within a stepwise increasing area a of n pixels (each representing 4 km^2 for the chosen horizontal resolution).

Odstraněno: we obtained

Odstraněno: ,

Odstraněno: which

Odstraněno: were

Odstraněno: .

The WEI is calculated by maximizing the variable E_{ta} . This variable is defined as the common logarithm of the spatial geometric mean G_{ta} of the return periods N_{ti} multiplied by the radius R of a circle of the same area as the one over which the geometric mean is taken. This relationship can be expressed as

Odstraněno: was

$$E_{ta} = \log(G_{ta})R = \frac{\sum_{i=1}^n \log(N_{ti})}{n} \frac{\sqrt{a}}{\sqrt{\pi}}. \quad (1)$$

The optimization of a is performed using a step-by-step enlarging of the area under consideration. The variable E_{ta} initially increases s as we accumulate cells with lengthy return periods; once the return periods are insufficiently long in the added cells, the value of E_{ta} starts s to decrease. When choosing a time window for which E_{ta} reaches s its maximum during the entire event, the respective maximum E_{ta} equals s the WEI. Then, it is also possible to determine the affected area a , the duration t , and the respective geometric mean of return periods G_{ta} complying with the relationship $E_{ta} = \text{WEI}$. The method is presented in Fig. 1, which shows the EPE from May/June 2013, which was subsequently added to the study because of catastrophic flooding observed during this time (Šercl et al., 2013). Although the maximum return period at a site belonged to the 1-day total on 1 June (Horní Maršov, 130.3 mm, > 1000 yr), maximum E_{ta} gradually increased with increasing t . The WEI corresponded to the five-day period from 30 May to 3 June 2013.

Odstraněno: was

Odstraněno: d

Odstraněno: d

Odstraněno: were

Odstraněno: ed

Odstraněno: we

Odstraněno: e

Odstraněno: d

Odstraněno: ed

Odstraněno: we were

Odstraněno: able

Nevertheless, the time distribution of maximum E_{ta} values can be more complex. Figure 2 presents such a case from August 2002, when a subsequent EPE followed the previous one after a break of only three days. In this case, two distinct maxima of E_{ta} enabled us to recognize independent EPEs and determine the durations of both events (two and three days, respectively). Adding an extra day would cause the E_{ta} value to decrease. Therefore, we did not consider a longer time window (7 days) though the E_{ta} would be even higher as the two EPEs would be aggregated. Moreover, we also decided to consider precipitation events of the length from 1 to 5 days only because the thresholds correspond with two main indices of precipitation extremes by ETCCDI (Zhang et al., 2011).

Figure 2 also shows that the extremity of precipitation with respect to the maximum E_{ta} can substantially differ from the areal mean of daily precipitation totals. Although the mean was nearly twice as high on 11 August than on 6 August, the respective E_{ta} maxima were the same. The advantage of the concept of E_{ta} is that the considered area and the time window are “event-adjusted”. Although comparably heavy rains were limited to the southwestern Czech Republic on both days, weaker rains occurred only on the latter day throughout the whole country. These non-extreme precipitation totals generally increase the mean, whereas they are not included in the E_{ta} .

Odstraněno: throughout the Czech Republic

Odstraněno: d

Odstraněno: were

2.2 Precipitation abnormality with respect to the season

Both precipitation long-term means and extremes are not equally distributed among the seasons in most places on the Earth. In the Czech Republic, higher precipitation totals generally occur in summer (Tolasz et al., 2007). As a result, the WEI maxima are also concentrated in the summer.

However, even smaller precipitation totals can be considered to be “extreme” when they occur in a season when they are rare. If precipitation extremes are defined as events significantly different from seasonally normal conditions, then they can occur throughout the year. Precipitation extremes of this type will be referred to as abnormal precipitation events (APEs). They were evaluated using the weather abnormality index (WAI), which has the same design as the WEI, although it is calculated based on seasonally standardized precipitation totals.

The standardization of daily precipitation totals reflects their annual distribution. The mean, variance and skewness fluctuate significantly during the year (Fig. 3), and thus none of these parameters can be avoided in the process of standardization. The same is true for the kurtosis which is very closely correlated with the skewness (not depicted). Furthermore, means and standard deviations are also closely correlated. Therefore, our standardization method consists of removing fluctuations of the mean μ_d and the skewness γ_d from the daily totals on individual calendar days d .

There are two types of fluctuations in the data. First, μ_d and γ_d change significantly from day to day depending on the presence or absence of heavy precipitation episodes on a given calendar day. These random fluctuations have to be smoothed using a proper time filter. Monthly means are sometimes used for these purposes, but we have excluded this method as

Odstraněno: during the period of 1961–2010

it produces artificial edges in the data. Moving averages are only slightly better from this point of view. We used the Gaussian filter because it is considered the ideal time domain filter (Blinchikoff and Zverev, 2001). We tested several data series to identify the most appropriate length of the filter and chose Gaussian smoothing with a standard deviation σ of 30 days and a time window of 3σ . Time-smoothed values of the mean and skewness are hereinafter referred to as μ_{dG} and γ_{dG} , respectively.

Even the values of μ_{dG} and γ_{dG} fluctuate through the year because of seasonal changes in precipitation climatology. The actual daily totals P_1 are standardized using the relationship

Odstraněno: were

$$P_{ms} = \bar{P} \left(\frac{P_1}{\mu_{dG}} \right)^{\frac{\bar{\gamma}}{\gamma_{dG}}} \quad (2)$$

where P_{ms} is the seasonally standardized daily total, μ_{dG} is the time-smoothed mean, γ_{dG} is the time-smoothed skewness of the distribution of daily totals ≥ 0.1 mm for a calendar day d , and $\bar{P} = E(\mu_{dG})$ and $\bar{\gamma} = E(\gamma_{dG})$. The transformation (2) directly standardizes the mean and skewness and indirectly standardizes the standard deviation and kurtosis of the daily data. The correction using \bar{P} and $\bar{\gamma}$ induces an important feature of seasonally standardized daily totals: their mean annual sum equals the actual mean annual total. This process only redistributes precipitation amounts within the data series: seasonally standardized daily totals become higher and lower in seasons that are less and more exposed to high precipitation, respectively.

An example from the Czech mountain station Churáňov is presented in Figs. 3 and 4. The mean and skewness are at a maximum in the summer, whereas the winter is characterized by a minimum of smoothed means but a secondary maximum of the skewness. As a result, extreme totals were substantially reduced (approximately 30 %) by the dual standardization when they occurred in the summer. The winter totals were increased (20 %) due to the standardization of means; the increase in the totals due to the standardization of the skewness was present primarily in the spring (15 %). Figure 4 confirms that both moments need to be standardized to obtain a rather even annual distribution of extremes throughout the year.

Odstraněno: are

Odstraněno: are

Odstraněno: is

2.3 Evaluation of flood extremity

To compare the precipitation and flood extremity, we also designed the flood extremity index (FEI), which is analogous to the WEI and enables us to recognize extreme flood events

(EFEs). The FEI is based on return periods of peak discharges at individual sites. [In the presented study, we used](#) data from 198 [Czech](#) gauges beginning in 1961. However, only the approximate return period values of $N = 5, 10, 20, 50$ or 100 years were available. Each site represents a catchment with an area exceeding 100 km². If there are one or more considered sites upstream, the catchment area does not include the respective sub-catchments.

Odstraněno: The Czech Hydrometeorological Institute provided

By analogy to the WEI, we combine the extremity at each site j expressed by the return period N_j with the area of the respective catchment a_j . The area of the basin indirectly represents the magnitude of the river. Return periods were considered without evaluating the possible human impact on peak discharge so the value of the FEI represents the actual course of the flood instead of the theoretical one. Nevertheless, the very high discharges that are crucial for the evaluation of an event are generally less affected by human activities (Langhammer, 2008).

The FEI is defined as the maximum of the variable F_a , which is given by the equation

$$F_a = \frac{\sum_{j=1}^h (\log(N_{ji}) a_j)}{a_a} \frac{\sqrt{a_a}}{\sqrt{\pi}}. \quad (3)$$

The aggregated area a_a consists of $h = 1, \dots, 198$ considered catchments, which are ordered according to N_j in descending order. Return periods shorter than 5 years [are](#) assigned a value of $N_j = 1$ so that $\log(N_j) = 0$ and the respective catchments do not contribute to the resultant FEI value.

Odstraněno: were

The method is demonstrated in Fig. 5, which compares flooding [in the Czech territory](#) due to the EPEs in August 1977 and in May/June 2013. The F_a curve representing the 2013 EFE increases more rapidly and starts to decrease later than in 1977; maxima of the curves depict values of the FEI. The reason is that return periods of peak discharges did not reach 50 years during the first event, whereas during the latter event, the total area of catchments corresponding to gauges with peak flows of $N_j \geq 100$ years exceeded 2000 km², and the value of a_a corresponding to the FEI was larger. Unlike in Fig. 1, the curves are not fluent because only discrete values of N_j were used (see above).

Because of similarities between Eqs. (1) and (3), the WEI and the FEI reach values of the same order. Nevertheless, values of the FEI [were](#) usually slightly smaller [in the presented study](#) for several reasons, primarily because all return periods between two values (20 and 50

Odstraněno: are

years, for example) were assigned the lower value. Moreover, the maximum values were 100 and 1000 years when calculating the FEI and the WEI, respectively.

Odstraněno: are

Odstraněno: are

A serious problem is the separation of individual EFEs if additional peaks occur during a short period in the same catchments. We decided to separate EFEs with respect to EPEs. For example, we distinguished two EFEs in August 2002 because they were produced by two independent EPEs (Fig. 2). Naturally, the extremity of the latter EFE was affected not only by the latter EPE but also by the previous one in such a case; this fact can partly explain the discrepancies between the extremity of precipitation and of subsequent flooding.

Odstraněno: There is a question regarding the manner in which the FEI design can affect the results. Therefore, we also calculated a simpler index that only aggregates areas of affected catchments weighted by return period values of peak discharges. An approximate (non-linear) correlation between the two indices was noted, which indicates that the FEI concept is sufficiently robust.¶

Finally, we tried to assess how much the FEI can be influenced by human regulations. Therefore, a parallel calculation of the FEI was performed (hereinafter FEI_u) using only data from 97 Czech stations where no reservoir with flood protection function is present upstream. A linear dependence was detected between the FEI and the FEI_u with Pearson correlation coefficient as high as 0.86. For example, four maximum EFEs were evaluated as the extremes regardless either the FEI or the FEI_u is used. Only four outliers were detected when the FEI_u was substantially reduced; it happened because flooding occurred almost only in catchments not involved in the FEI_u calculation. Nevertheless, since the FEI_u represents only rather small catchments, we prefer to use the FEI which seems to be robust enough also from the viewpoint of human regulations.

Odstraněno: is

2.4 Comparison of precipitation extremes and floods

Extremity of precipitation and of subsequent flooding can be compared using rankings of the events and, furthermore, by the normalized ratio of respective extremity indices:

Odstraněno: were

$$C_e = 100 \frac{FEI}{WEI}. \quad (4)$$

and

$$C_a = 100 \frac{FEI}{WAI}. \quad (5)$$

Values significantly above and below average resulting from Eqs. (4) and (5) indicate that the hydrological response to the precipitation event was most likely affected by factors other than only the extremity of precipitation. One of these factors may be antecedent saturation. This parameter can be expressed e.g. using the antecedent precipitation index (Köhler and

Odstraněno: was

Lindsley, 1951) spanning 30 days (API_{30}) before the first day of the EPE/APE, which is calculated using the relationship

$$API_n = \sum_{i=1}^n P_i k^{n-i+1}. \quad (6)$$

where P_i is the daily total during the i -th day of the period under consideration spanning $n = 30$ days, and [the constant \$k\$ represents evapotranspiration](#); generally accepted value of k is [0.93](#) for the Czech Republic (Brázdil et al., 2005).

Odstraněno: 0.93 is the

Odstraněno: the constant

One of important climatological aspects of EPEs, APEs, and EFEs is their seasonal distribution. To analyze this distribution, we adopted the directional characteristics method (e.g., Black and Werritty, 1997), which was applied also to floods on selected Czech rivers by Čekal and Hladný (2008). Individual extreme events [are](#) depicted in a radial diagram where directions of vectors, which originate in the diagram's center and end in the signs representing individual events, account for calendar days. In contrast to the above mentioned papers, we modified the method so that signs representing individual events are not located on a unit circle but their distance from the diagram's center is proportional to the WEI, WAI, or FEI. The resultant diagram better represents the seasonality of extremes because strong events are assigned greater weighting.

Odstraněno: were

Odstraněno: d

Odstraněno: ed

3 Application to the Czech Republic

3.1 Precipitation extremes and floods

Although the WEI, the WAI, and the FEI itself are independent of thresholds, it was necessary to limit their values to constrain the sets of events that would be classified as EPEs, APEs, and EFEs. This step was performed because there are no natural limits dividing extreme from non-extreme events. In fact, the extremity of events gradually decreases with even smaller differences among the events as less-extreme events are considered. We selected the 50 events of each type so that one extreme event occurs per year on average. Sets of EPEs, APEs, and EFEs during the period of 1961–2010 in the Czech Republic are listed in Fig. 6.

The sets of EPEs, APEs, and EFEs partly overlap. We identified 22 precipitation extremes that were classified both as EPEs and APEs. More than a half of the EPEs and nearly 50 % of the APEs produced EFEs. If only the warm half of the year [\(MJJASO\)](#) is considered, the

number of EFEs produced by EPEs increases to 75 %. This fact suggests that the magnitude of causal precipitation is the main factor conditioning most of floods in the Czech Republic. Nevertheless, we also identified cases in which the hydrological response to an EPE was too small or too big. These events confirm that flooding is also significantly influenced by other factors which are further discussed in Sect. 4.2.

3.2 Inter-annual variability of extremes

The temporal distribution of extreme events during the period of 1961-2010 is shown in Fig. 7. Regardless of the type of extremes (EPEs, APEs, and EFEs), there are certain common features of their variations in time. One such feature is the below-normal frequency and magnitude of all types of extremes during the first 16 years of this time period. The situation dramatically changed in 1977, when three EPEs occurred in the span of less than one month; two of them produced EFEs (Fig. 6). Similar conditions occurred during the following two years. Moreover, the second and the fourth highest values of the WEI were recorded in July 1981 and August 1983, respectively. The wet years of 1985-6 ended a decade of all types of extremes with above-normal frequency and magnitude.

In contrast, the following decade of 1987-1996 was lacking in hydrometeorological extremes. EFEs were completely absent from the warm half-years (MJJASO) and did not occur again until 1996. The rest of the 1990s would also be considered to be below normal if July 1997 were not included. The first of two EPEs in this month exhibited maximum values of both the WEI and WAI. Similar values were also observed five years later, in August 2002. Compared to similarly strong precipitation events in the early 1980s, these two events produced much greater flooding. Last five years of the study period were characterized by an abnormally high number of extremes, which were concentrated primarily in 2006 and 2010. If the 2013 flood were considered, four maximum EFEs occurred recently approximately every five years.

3.3 Seasonal distribution of extremes

The seasonal distribution of EPEs was significantly unequal during the period of 1961–2010 (Fig. 8). Based on the selected threshold, these events occurred from May to December. Nevertheless, only three such events occurred since October, all rather weak. The months of greatest activity were clearly July and August, when the five highest values of WEI were

noted. The level of activity during the first half of August was particularly pronounced: this time period was the seasonal peak in EPEs during the period of 1961–2010.

Naturally, APEs were distributed more equally from season to season during the 1961–2010 period than were the EPEs (Fig. 8). We noted at least one event in every calendar month. From October to March, the distribution of APEs was very uniform in terms of both the number of events and the magnitude. The values of the WAI were less than 100 with only one exception, which occurred during the 5 days from 28 December 1986 to 1 January 1987. This event was so exceptional that it also qualified as an EPE (see above). In contrast, only one APE was noted in April. This event and two others in the first half of May lasted only one day each.

The seasonal distribution of EFEs partly correlates with the seasonality of precipitation extremes, but it is also significantly affected by snow accumulation during the winter and by changes in the saturation of basins. As a result, we identified three main periods when the frequency of EFEs is increased: (i) the period from May to August, when most of the EPEs occur; (ii) the second half of December and early January, when the values of the WAI are slightly increased in comparison with the months before and after; (iii) March and very early April, when the values of the WAI are not very high. Mainly the last period is affected by thawing. The rest of April is characterized by a distinct break both in precipitation and flood events. As in the winter apart from December, only weak EFEs occurred during the fall, when, in contrast, APEs were frequently noted. September appears to be the month with maximum differences between precipitation and flood extremity; although several high EPEs were noted then, the EFEs remained small.

4 Discussion of results

4.1 Comparison with standard indices

In this section, the presented evaluation of precipitation and flood events is compared with standard methods mentioned in Sect. 1.

Regarding precipitation extremes, they are usually detected by maximum daily totals P_1 at any individual rain gauge (Ustrnul et al., 2015) or by areal precipitation means A_d during d days, for example for $d=2$ days (Conrad, 2001). The first approach is commonly used in the

Czech Republic: Štekl et al. (2001) analyzed days during the period of 1876–2000 when a daily total reached at least 150 mm anywhere in the Czech Republic. The Czech maximum occurred on 29 July 1897 when a P_1 of 345.1 mm was measured at the Nová Louka gauge in the Jizerské Hory Mts. Indeed, this event was the maximum P_1 ever recorded in Central Europe (Munzar et al., 2011).

Figure 9 compares 50 maximum WEI values with maximum P_1 and areal 1, 2, and 3-day means during the EPEs. It demonstrates that areal precipitation means generally decrease with decreasing WEI values but it is not fully true for point daily totals. As a result, the ranking of precipitation events significantly depends on the evaluation criterion. For example, daily point maxima were above 200 mm on 20 August 1972 and 22 July 1998 but the 1-day areal means were only 5.2 and 7.3 mm, respectively. The affected area was very small in both cases (see Fig. 6). In 1972, strong precipitation affected a large area but mainly outside the Czech state border (Müller et al., 2009) whereas the 1998 case was due to a strong convective storm within a limited area (Řezáčová and Sokol, 2003). Thus, the WEI seems to be a good compromise between the two standard approaches.

In contrast, there were many significant EPEs with high areal totals but without any point daily total exceeding 150 mm. For example, the second largest EPE in July 1981 was characterized by P_1 of only 122.0 mm but extra high areal totals (absolute maximum of A_1) produced the third largest EFE during MJJASO (Fig. 6). A still lower daily maximum (only 97.6 mm) was recorded during the historical case on 2 September 1890 when the 3-day areal precipitation total (1–3 September) was nearly as high as in August 2002 and subsequent flooding was only slightly less catastrophic (Řezáčová et al., 2005a). The WEI reached very high value in July 1981 because the index reflects the size of the affected area and the fact that heavy rains occurred not only in mountains but also in lowlands where they are rare.

Moreover, some precipitation events lasted virtually only one day (e.g., 23 June 1992) but others lasted three or even more days (e.g., 4–7 July 1997). The first case is not properly evaluated by the areal 3-day mean total and the latter by the areal 1-day mean while the WEI accommodates to the real duration of the events. All above mentioned examples demonstrate the advantage of the WEI which combines the intensity of precipitation with its spatial extent and reflects also duration of precipitation events.

Precipitation extremes are usually evaluated regardless the season when they occurred. Recently, Ramos et al. (2014) suggested an index ranking daily precipitation extremes which

employs 1-day precipitation totals normalized by their climatology on the given calendar day. The index can be hardly compared with the WAI because Ramos et al. (2014) do not reflect duration of precipitation events. Nevertheless, we decided to accumulate daily values of their index on individual days of the APEs and compare the sums (hereinafter called RI) with the WAI values (Fig. 10).

Naturally, the WAI is more closely related to the WEI than the RI. Values of the WAI are higher than the WEI from September to the middle of May and lower in the rest of the year. Values of the RI seem to be a bit more equally distributed through the calendar year but they correspond less to the precipitation extremity. It can be demonstrated by the comparison of two July events: the maximum EPE from the beginning of July 1997 is represented by only the 16th highest RI value but significantly less extreme event from 1977 reached the 6th highest value of the RI though the turn of July and August is the top season of heavy rains in the Czech Republic. A possible reason can be the fact that daily precipitation totals are not normally distributed but the RI standardizes them only by the mean and the variance.

Finally, the FEI was compared with the Francou index (FI) and the index by Uhlemann et al. (2010) (hereinafter UI), see Sect. 1. Data from only eight large Czech catchments were at our disposal: Labe in Brandýs, Otava in Písek, Berounka in Beroun, Vltava in Prague, Labe in Děčín, Odra in Bohumín, Morava in Strážnice, and Dyje in Doní Věstonice / Nové Mlýny. We considered the maximum FI value from the eight catchments and the UI representing all these catchments together. To enable the comparison, the FEI was recalculated again using data from only the eight gauges (hereinafter FEI_8). Only 31 of EFEs reached the FEI_8 values above zero (Fig. 11). Even such a rough comparison of the indices shows that the FEI is a compromise between the FI representing the most affected catchment and the UI which emphasizes the size of the affected area even more than the FEI. The difference between the FI and the UI was mainly evident in July 1997 when the floods were extreme in the eastern part of the Czech Republic but no flood occurred in the western part.

4.2 Relationship between precipitation extremes and floods

Though many precipitation extremes correspond with EFEs, there are still discrepancies between the WEI and the FEI and even greater discrepancies between the WAI and the FEI values. For example, the fourth largest EPE did not produce an EFE in August 1983; in fact, this EPE resulted in very limited flooding ($C_e = 8 \%$, see Fig. 6). Several factors affected the

hydrological response of this event. These include unusually low antecedent saturation (mean API_{30} only 9.3 mm) and a moderately even distribution of rainfall over five days, whose maximum occurred on the second day of the event. Regulation processes by the dams could also play a role; nevertheless, Brázdil et al. (2005) confirm that no even unaffected peak flow with the return period of two or more years occurred at Vltava River in Prague even though the catchment belonged to the most affected by heavy rains.

All these factors will be studied in the future together with spatial patterns of precipitation to elucidate the discrepancies between individual precipitation and flood events. One of the factors to be considered should be the season when an EPE occurred, as discussed in Sect. 3.3. The important role of this factor is confirmed by Fig. 12. It is clear that the hydrological effect of an EPE is typically strong in May, more ambiguous in summer, and considerably weaker in September. The very last event from the turn of May and June 2013 also supports this conclusion ($C_e = 97\%$, see Fig. 6). If an EPE occurs in the last month of the year, it can also produce rather big flooding, although such events are very rare.

The hydrological effect of APEs (Fig. 12) is substantially reduced in the winter, early spring (most likely due to precipitation in the form of snow) and autumn. In contrast, if precipitation events are sufficiently high to qualify as APEs in the late spring and summer, they are usually flood producing; surprisingly, this was also the case with all APEs in December. A subsequent detailed study of intra-annual variations in precipitation patterns is necessary to explain these findings.

However, seasonality can hardly explain the difference in flood activity between two periods with unusually high EPEs (1977–1986 and 1997–2010). The FEI exceeded 50 in association with only two EFEs during the first period, whereas this occurred six times since 1997 (Fig. 7). Several factors most likely explain the difference: (i) if two or more EPEs appeared during one year in the first period, they were separated by a much longer interval than in the latter period (the shortest interval between two EPEs was 8 days in 1977 but only 3 days in 2002); (ii) in cases of EPEs following one after another, the magnitude decreased in the first period (WEI decreasing from 113.5 to 49.6 in July/August 1977) but increased in the second period (WEI increasing from 104.3 to 174.3 in August 2002); (iii) just before the main EPEs, the mean antecedent saturation was much lower on 17 July 1981 (24.6 mm) and on 1 August 1983 (9.3 mm) than on 4 July 1997 (34.5 mm) and on 11 August 2002 (50.1 mm because of the above-mentioned preceding EPE); (iv) the EPEs in 1981 and 1983 lasted one day longer

than those in 1997 and 2002. It demonstrates that changes in a flood regime can also occur without significant changes in only the magnitude of precipitation events.

5 Conclusions

The paper presents three indices for evaluation of hydrometeorological extremes. In contrast to common indices, the presented indices reflect not only maxima of precipitation amounts and peak discharges at individual gauges but also the rarity of values, the size of the affected area, and the duration of precipitation. Besides that, the aspect of precipitation seasonality was considered which enables the detection of precipitation extremes throughout the year. A unified design of the presented indices enables to compare easily inter-annual and seasonal distributions of precipitation extremes and large floods.

The application of the indices to the Czech territory demonstrates that this approach enables to compare the extremity of precipitation and consequent floods rather than if precipitation events are evaluated only by the maximum precipitation total at one station. Extreme floods correspond to precipitation extremes; nevertheless, not only the magnitude of precipitation extremes influences the hydrological response but also the season, the antecedent saturation and other factors. The study confirms that variations in the frequency and/or magnitude of floods can be due not only to variations in the magnitude of precipitation events but also to variations in these factors.

Additional detailed studies are necessary for elucidating the way in which seasonality influences the hydrological effect of precipitation extremes. This effect could be due to seasonal differences in evapotranspiration or to possible seasonal variations in the attributes of the precipitation itself. The events can differ, e.g., in the spatial distribution of precipitation within the affected area or in the temporal concentration of precipitation during the event (intensity can increase, remain the same or decrease). In addition, various circulation conditions could explain the differences among the extremes (Kašpar and Müller, 2010). In a next step, we plan to explore the dependences on the circulation extremity index (Kašpar and Müller, 2014), which completes the set of tools for studying the pathway of causation from circulation to precipitation and runoff.

Acknowledgements

1 The research presented in this study is supported by the Czech Science Foundation under the
2 GACR P209/11/1990 project. Precipitation [and runoff](#) data were provided by the Czech
3 Hydrometeorological Institute. We would also like to thank J. Kyselý and L. Gaál from the
4 Institute of Atmospheric Physics in Prague for implementing the ROI method.

5

References

- Alexander, L. V., Zhang, X., Peterson, T. C., Caesar, J., Gleason, B., Klein Tank, A. M. G., Haylock, M., Collins, D., Trewin, B., Rahimzadeh, F. Tagipour, A., Rupa Kumar, K., Revadekar, J., Griffiths, G., Vincent, L., Stephenson, D. B., Burn, J., Aguilar, E., Brunet, M. Taylor, M., New, M., Zhai, P., Rusticucci, M., and Vazquez-Aguirre, J. L.: Global observed changes in daily climate extremes of temperature and precipitation, *J. Geophys. Res.*, 111, D05109, doi:10.1029/2005JD006290, 2006.
- Barredo, J. I.: Major flood disasters in Europe: 1950–2005, *Nat Hazards*, 42, 125–148, 2007.
- Begueria, S., Vicente-Serrano, S. M., Lopez-Moreno, J. I., and Garcia-Ruiz, J. M.: Annual and seasonal mapping of peak intensity, magnitude and duration of extreme precipitation events across a climatic gradient, northeast Spain, *Int. J. Climatol.*, 29, 1759–1779, 2009.
- Black, A. R. and Werritty, A.: Seasonality of flooding: a case study of North Britain, *J. Hydrol.*, 195, 1–25, 1997.
- Blinchikoff, H. J. and Zverev, A. I.: Filtering in the time and frequency domain, Scitech Publishing, Raleigh, United States of America, 2001.
- Brázdil, R., Dobrovolný, P., Elleder, L., Kakos, V., Kotyza, O., Květoň, V., Macková, J., Müller, M., Štekl, J., Tolasz, R., and Valášek, H.: Historical and recent floods in the Czech Republic, (in Czech, including 83 pp. of an English abstract), Masaryk University, Brno, Czech Republic, 2005.
- Burn, D. H.: Evaluation of regional flood frequency analysis with a region of influence approach, *Water Resour. Res.*, 26, 2257–2265, 1990.
- Čekal, R. and Hladný, J.: Analysis of flood occurrence seasonality on the Czech Republic territory with directional characteristics method, *AUC Geographica*, 43, 3–14, 2008.
- Herschy, R. W. (Ed.): World catalogue of maximum observed floods, IAHS-AISH Publ. 284, IAHS Press, Wallingford, 2003.
- Hosking, J. R. M. and Wallis, J. R.: Regional frequency analysis: an approach based on L-moments, Cambridge University Press, New York, 1997.
- Kašpar, M. and Müller, M.: Selection of historic heavy large-scale rainfall events in the Czech Republic, *Nat. Hazards Earth Syst. Sci.*, 8, 1359–1367, 2008.

1 Kašpar, M. and Müller, M.: Variants of synoptic patterns inducing heavy rains in the Czech
2 Republic, *Phys. Chem. Earth*, 35, 477–483, 2010.

3 Kašpar, M. and Müller, M.: Combinations of large-scale circulation anomalies conducive to
4 precipitation extremes in the Czech Republic, *Atmos. Res.*, 138, 205–212, 2014.

5 Köhler, M. A. and Linsley, R. K.: Predicting the runoff from storm rainfall. U.S. Weather
6 Bureau Research Paper no. 34., Washington, 9 pp., 1951.

7 Konrad, C. E.: The most extreme precipitation events over the Eastern United States from
8 1950 to 1996: Considerations of scale, *J. Hydrometeor.*, 2, 309–325, 2001.

9 Kyselý, J., Gaál, L., and Pícek, J.: Comparison of regional and at-site approaches to modelling
10 probabilities of heavy precipitation, *Int. J. Climatol.*, 31, 1457–1472, 2011.

11 Kyselý, J. and Pícek, J.: Regional growth curves and improved design value estimates of
12 extreme precipitation events in the Czech Republic, *Clim. Res.*, 33, 243–255, 2007.

13 Langhammer, J.: Modelling the impact of anthropogenic modifications to river channels on
14 the course of extreme floods. Case study: August 2002 flood, Blanice River basin, Czechia,
15 *Geografie*, 113, 237–252, 2008.

16 Müller, M. and Kašpar, M.: Event-adjusted evaluation of weather and climate extremes, *Nat.*
17 *Hazards Earth Syst. Sci.*, 473–483, 2014.

18 Müller, M., Kašpar, M., and Matschullat, J.: Heavy rains and extreme rainfall-runoff events in
19 Central Europe from 1951 to 2002, *Nat. Hazards Earth Syst. Sci.*, 9, 441–450, 2009.

20 Munzar, J., Ondráček, S., and Auer, I.: Central European one-day precipitation records,
21 *Moravian Geographical Reports*, 19, 32–40, 2011.

22 Ramos, A. M., Trigo, R. M., and Liberato, M. L. R.: A ranking of high-resolution daily
23 precipitation extreme events for the Iberian Peninsula, *Atmos. Sci. Let.*, 15, 328–334, 2014.

24 Ren, F. M., Cui, D. L., Gong, Z. Q., Wang, Y. J., Zou, X. K., Li, Y. P., Wang, S. G., and
25 Wang, X. L.: An objective identification technique for regional extreme events, *J. Clim.*, 25,
26 7015–7027, 2012.

27 Řezáčová, D., Kašpar, M., Müller, M., Sokol, Z., Kakos, V., Hanslian, H., and Pešice, P.: A
28 comparison of flood precipitation in August 2002 with historical extreme precipitation events
29 from the Czech territory, *Atmos. Res.*, 77, 354–366, 2005a.

1 Řezáčová D. and Sokol Z.: A diagnostic study of a summer convective precipitation event in
2 the Czech Republic using a nonhydrostatic NWP model, *Atmos. Res.*, 67–68, 559–572, 2003.

3 Řezáčová D., Pešice P., Sokol Z.: An estimation of the probable maximum precipitation for
4 river basins in the Czech Republic, *Atmos. Res.*, 77, 407–421, 2005b.

5 Rodier, J. A. and Roche M. (Eds.): World catalogue of maximum observed floods, IAHS
6 Publ. 143, IAHS Press, Wallingford, 1984.

7 Šercl, P., Tyl, R., and Pecha, M.: The course and the extremity of the June 2013 floods,
8 *Meteorologické zprávy*, 66, 197–202, 2013.

9 Štekl, J., Brázdil, R., Kakos, V., Jež, J., Tolasz, R., and Sokol, Z.: Extreme daily precipitation
10 totals during 1879–2000 in the Czech territory a their synoptic causes, (in Czech), *Národní*
11 *klimatický program České republiky*, 31, Praha, Czech Republic, 140 pp., 2001.

12 Stephenson, D. B.: Definition, diagnosis, and origin of extreme weather and climate events,
13 in: *Climate extremes and society*, Diaz, H. F. and Murnane, R. J. (Eds.), Cambridge
14 University Press, New York, 11–23, doi:10.1017/CBO9780511535840.004, 2008.

15 Tolasz, R., Míková, T., Valeriánová, A., and Voženílek, V. (Eds.): *Climate atlas of Czechia*,
16 Czech Hydrometeorological Institute, Praha, Czech Republic, 256 pp., 2007.

17 Uhlemann, S., Thielen, A. H., and Merz, B.: A consistent set of trans-basin floods in
18 Germany between 1952–2002, *Hydrol. Earth Syst. Sci.*, 14, 1277–1295, 2010.

19 Ustrnul, Z., Wypych, A., Henek, E., Maciejewski, M., and Bochenek, B.: Climatologically
20 based warning system against meteorological hazards and weather extremes: the example for
21 Poland. *Nat. Hazards*, 77, 1711–1729, 2015.

22 Zhang, X. B., Alexander, L., Hegerl, G. C., Jones, P., Klein Tank, A., Peterson, T. C., Trewin,
23 B., and Zwiers, F. W.: Indices for monitoring changes in extremes based on daily temperature
24 and precipitation data, *Wiley Interdiscip. Rev.-Clim. Chang.*, 2, 851–870, 2011.

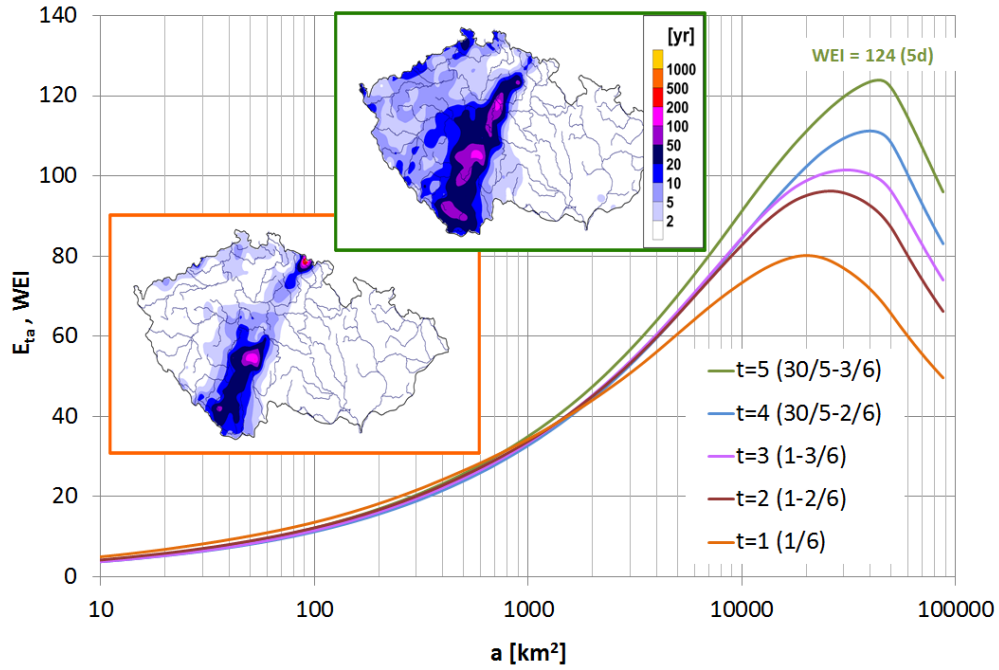
25

Tables

Table 1. Acronyms for proposed indices and studied hydrometeorological extremes.

| | |
|------------|--|
| <u>WEI</u> | <u>Weather extremity index</u> |
| <u>WAI</u> | <u>Weather abnormality index</u> |
| <u>FEI</u> | <u>Flood extremity index</u> |
| <u>EPE</u> | <u>Extreme precipitation event</u> |
| <u>APE</u> | <u>(Seasonally) abnormal precipitation event</u> |
| <u>EFE</u> | <u>Extreme flood event</u> |

1 Figures



2
3 Figure 1. Determination of the WEI of the EPE in May/June 2013 by maximizing E_{ta} . The
4 inset maps present interpolated return periods of 1-day totals on 1 June (left) and of 5-day
5 totals from 30 May to 3 June (right).

6

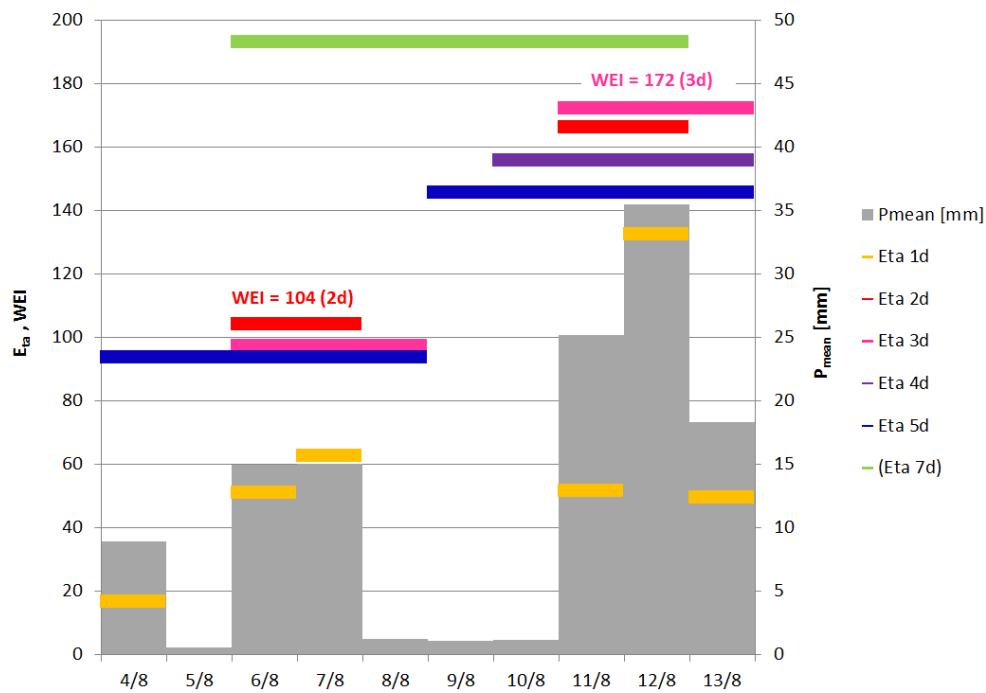


Figure 2. Mean daily precipitation totals P_{mean} in the Czech Republic (right axis) and respective maximum values of E_{ta} on 4–13 August 2002 (color bars, left axis). Selected maximum E_{ta} values for time windows with various lengths of t days are depicted including the hypothetical value of maximum E_{ta} for the 7-day period of 6–12 August.

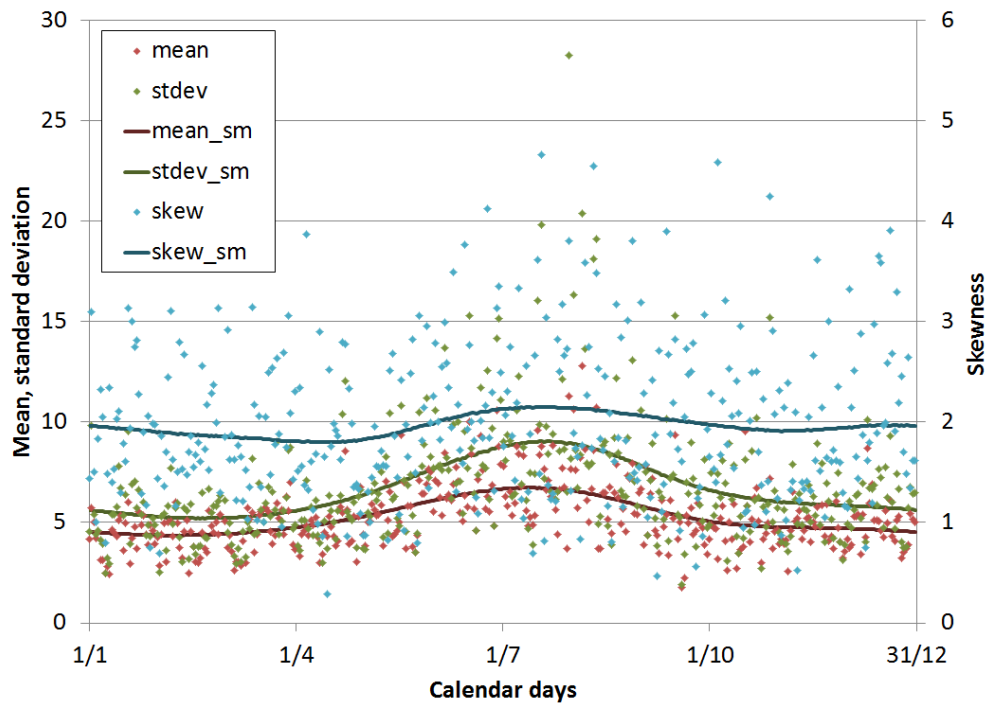


Figure 3. Annual cycle of the mean, standard deviation, and skewness of daily precipitation totals at Churáňov station. Individual points represent the values of the mean, standard deviation, and skewness, calculated for each calendar day taking into account the period of 1961–2010; curves depict data smoothed using the Gaussian filter.

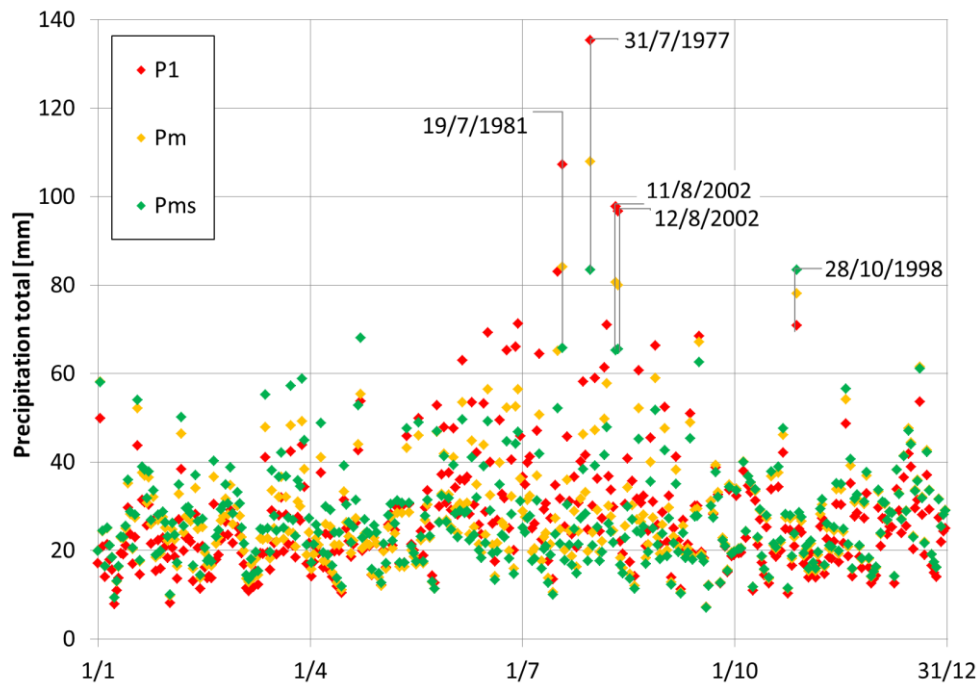
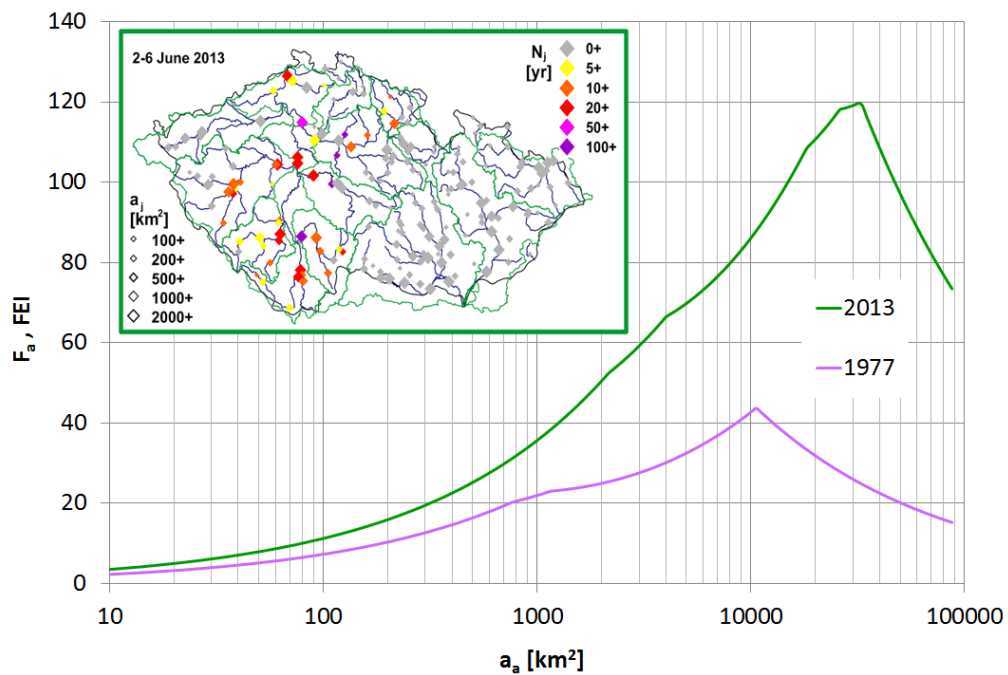


Figure 4. Daily precipitation maxima on individual calendar days at Churáňov station during the 1961-2010 period: non-standardized totals (P_1), totals standardized for the mean and variance only ($P_m = \bar{P} P_d / \mu_{dG}$) and fully standardized totals (P_{ms}). Dates of significant totals are indicated (day/month/yr).



1
2 Figure 5. Evaluation of extremity of floods in May/June 2013 and in August 1977 using the
3 FEI. The step-by-step aggregated catchments are ordered in descending order with respect to
4 return periods recorded there. The inset map presents return periods N_j of peak discharges at
5 gauges in 2013; blue and green curves correspond to the main rivers and watersheds,
6 respectively.

| | EPEs | | | | | APEs | | | | | EFEs | | |
|-----------|---------------------------|--------------------|--|-----------------------|---------------------------|--------------------|--|-----------------------|---------------------------|--|------------|-------|------|
| | EPEs + APEs | | | | | | | | | | | | |
| | | | | | | APEs + EFEs | | | | | | | |
| | EPEs + APEs + EFEs | | | | | | | | | | | | |
| Rank-ings | First day [yyyy-mm-dd] | Duration [days] | Area [10 ³ km ²] | C _e [%] | First day [yyyy-mm-dd] | Duration [days] | Area [10 ³ km ²] | C _a [%] | First day [yyyy-mm-dd] | Area [10 ³ km ²] | | | |
| 1 | 1997-07-04 | 4 | 178.3 | 38.2 | 70 | 1997-07-03 | 5 | 133.6 | 28.4 | 93 | 2002-08-12 | 180.9 | 35.8 |
| 2 | 1981-07-17 | 4 | 177.3 | 44.9 | 39 | 1981-07-18 | 3 | 130.9 | 31.0 | 53 | 2006-03-28 | 139.4 | 48.2 |
| 3 | 2002-08-11 | 3 | 174.3 | 55.1 | 104 | 2010-09-25 | 3 | 126.4 | 29.1 | 22 | 1997-07-07 | 124.3 | 20.2 |
| 4 | 1983-08-01 | 5 | 148.3 | 39.5 | 8 | 2002-08-11 | 3 | 126.3 | 43.0 | 143 | 1981-03-10 | 77.5 | 19.5 |
| 5 | 2006-08-03 | 5 | 122.9 | 38.6 | 15 | 1986-12-28 | 5 | 109.0 | 42.1 | 42 | 1981-07-20 | 69.4 | 16.7 |
| 6 | 2007-09-05 | 2 | 115.8 | 35.6 | 25 | 2007-09-05 | 3 | 105.2 | 27.0 | 28 | 2010-05-17 | 65.9 | 7.6 |
| 7 | 1977-07-31 | 3 | 113.5 | 44.1 | 35 | 1983-08-01 | 5 | 101.2 | 32.2 | 12 | 2002-12-30 | 62.4 | 18.5 |
| 8 | 1985-08-06 | 4 | 109.2 | 35.6 | 41 | 2010-01-08 | 3 | 96.8 | 33.5 | 0 | 2002-08-07 | 60.8 | 9.1 |
| 9 | 2002-08-06 | 2 | 104.3 | 20.7 | 58 | 2005-01-20 | 1 | 86.1 | 45.6 | 0 | 1988-03-26 | 59.0 | 16.9 |
| 10 | 1979-06-17 | 1 | 102.5 | 24.7 | 34 | 1970-02-20 | 4 | 81.3 | 47.6 | 23 | 2010-06-02 | 48.2 | 8.2 |
| 11 | 1979-09-21 | 4 | 97.0 | 37.9 | 0 | 1964-10-08 | 2 | 79.9 | 18.0 | 0 | 2000-03-09 | 48.1 | 6.7 |
| 12 | 2010-09-25 | 3 | 91.5 | 31.3 | 31 | 1978-05-07 | 1 | 78.9 | 17.9 | 49 | 2005-03-17 | 47.3 | 11.1 |
| 13 | 1978-08-07 | 2 | 87.1 | 25.5 | 32 | 1993-12-19 | 2 | 78.5 | 34.3 | 59 | 1982-01-06 | 47.0 | 9.9 |
| 14 | 2010-08-06 | 2 | 81.7 | 17.2 | 54 | 2002-08-06 | 2 | 77.3 | 14.3 | 79 | 1993-12-21 | 46.0 | 5.9 |
| 15 | 1964-08-08 | 3 | 77.9 | 18.3 | 21 | 1979-06-17 | 1 | 76.8 | 17.0 | 45 | 1986-12-30 | 45.5 | 10.4 |
| 16 | 2001-07-20 | 1 | 73.7 | 22.9 | 12 | 1974-12-05 | 4 | 75.0 | 19.0 | 40 | 1985-08-07 | 44.7 | 8.3 |
| 17 | 1986-05-27 | 4 | 71.5 | 26.3 | 37 | 1979-03-29 | 2 | 72.1 | 17.8 | 0 | 2010-08-07 | 44.2 | 4.9 |
| 18 | 2006-05-26 | 2 | 70.1 | 18.4 | 56 | 1985-08-06 | 4 | 69.3 | 27.6 | 64 | 1980-07-21 | 43.9 | 6.2 |
| 19 | 2006-06-29 | 1 | 67.7 | 15.3 | 64 | 2002-03-19 | 5 | 68.9 | 19.0 | 23 | 1977-08-22 | 43.8 | 10.6 |
| 20 | 1991-07-31 | 3 | 67.1 | 30.9 | 20 | 2004-03-23 | 3 | 66.5 | 28.4 | 0 | 2006-06-30 | 43.3 | 4.0 |
| 21 | 1997-07-17 | 5 | 66.4 | 45.7 | 29 | 1962-10-31 | 2 | 66.5 | 18.1 | 0 | 1985-05-20 | 43.0 | 5.9 |
| 22 | 1978-05-07 | 1 | 64.0 | 19.2 | 61 | 1977-07-31 | 3 | 65.5 | 30.9 | 60 | 1965-06-05 | 41.3 | 5.7 |
| 23 | 1985-05-17 | 5 | 61.0 | 10.5 | 70 | 2006-01-01 | 3 | 65.0 | 14.0 | 0 | 1962-05-14 | 40.5 | 7.4 |
| 24 | 1992-06-23 | 1 | 57.1 | 10.9 | 8 | 2004-01-11 | 3 | 64.9 | 40.1 | 10 | 1977-08-01 | 39.6 | 5.1 |
| 25 | 1968-06-08 | 3 | 56.8 | 15.6 | 28 | 1995-09-14 | 2 | 62.6 | 10.5 | 0 | 2006-05-27 | 39.3 | 5.8 |
| 26 | 1995-09-14 | 2 | 55.9 | 14.8 | 0 | 1970-11-21 | 2 | 61.7 | 21.6 | 15 | 1978-05-08 | 39.0 | 6.3 |
| 27 | 1995-08-28 | 2 | 55.7 | 34.7 | 0 | 2006-05-26 | 2 | 61.5 | 15.7 | 64 | 1962-03-31 | 38.2 | 7.8 |
| 28 | 1977-08-21 | 2 | 55.5 | 35.0 | 79 | 1961-10-17 | 4 | 61.4 | 14.5 | 0 | 2009-06-23 | 37.7 | 3.6 |
| 29 | 1965-07-17 | 1 | 54.1 | 13.8 | 59 | 1980-10-12 | 2 | 60.9 | 31.8 | 0 | 1996-05-13 | 35.4 | 4.7 |
| 30 | 1996-07-08 | 1 | 51.6 | 37.2 | 0 | 1990-02-26 | 3 | 59.3 | 34.5 | 0 | 1966-07-23 | 35.0 | 5.7 |
| 31 | 1986-12-28 | 5 | 50.4 | 19.0 | 90 | 1978-08-07 | 2 | 57.3 | 19.0 | 48 | 1979-06-17 | 34.7 | 4.9 |
| 32 | 1994-08-25 | 1 | 49.8 | 18.8 | 10 | 1996-02-19 | 1 | 56.1 | 10.7 | 0 | 1972-08-21 | 34.2 | 4.3 |
| 33 | 1977-08-10 | 1 | 49.6 | 10.4 | 0 | 2010-08-06 | 2 | 55.7 | 7.8 | 79 | 1987-03-28 | 34.0 | 6.3 |
| 34 | 1998-06-10 | 4 | 49.4 | 38.3 | 0 | 1986-05-27 | 4 | 55.6 | 22.1 | 48 | 1965-06-10 | 33.3 | 6.8 |
| 35 | 2009-06-22 | 3 | 49.0 | 13.9 | 77 | 1998-10-28 | 2 | 55.3 | 28.3 | 53 | 1970-07-19 | 32.9 | 3.3 |
| 36 | 1963-06-14 | 2 | 48.3 | 22.1 | 0 | 1968-01-14 | 1 | 54.5 | 31.7 | 18 | 1976-11-17 | 32.0 | 3.2 |
| 37 | 1970-08-02 | 1 | 48.1 | 6.1 | 9 | 1983-05-01 | 1 | 54.3 | 9.9 | 25 | 1965-07-16 | 31.9 | 3.5 |
| 38 | 1970-07-16 | 3 | 47.9 | 13.2 | 69 | 1979-11-16 | 5 | 53.1 | 19.5 | 0 | 1987-04-04 | 30.9 | 3.4 |
| 39 | 1972-08-20 | 2 | 47.1 | 5.4 | 73 | 2010-05-16 | 2 | 51.9 | 4.3 | 127 | 1996-09-07 | 30.8 | 2.8 |
| 40 | 1964-10-08 | 2 | 46.9 | 19.3 | 0 | 1967-09-07 | 5 | 51.7 | 29.6 | 24 | 1974-12-08 | 30.2 | 4.8 |
| 41 | 1998-10-28 | 5 | 46.2 | 21.7 | 63 | 2009-04-17 | 1 | 51.5 | 10.0 | 0 | 1998-10-29 | 29.2 | 4.9 |
| 42 | 1967-09-08 | 4 | 45.9 | 24.7 | 27 | 1982-03-18 | 2 | 50.0 | 26.0 | 21 | 2007-09-06 | 29.1 | 2.2 |
| 43 | 2007-06-21 | 2 | 42.5 | 5.1 | 0 | 2000-03-08 | 2 | 48.7 | 10.3 | 99 | 2010-09-28 | 28.4 | 3.3 |
| 44 | 1976-09-15 | 3 | 42.4 | 13.6 | 0 | 1995-01-25 | 1 | 48.5 | 11.8 | 39 | 1978-08-09 | 27.8 | 2.0 |
| 45 | 1988-09-02 | 1 | 42.0 | 20.7 | 0 | 1964-08-08 | 3 | 48.3 | 7.7 | 34 | 1977-02-23 | 27.2 | 3.3 |
| 46 | 2010-05-16 | 2 | 41.7 | 4.2 | 158 | 1976-09-16 | 2 | 48.1 | 13.3 | 0 | 1986-05-30 | 26.8 | 3.9 |
| 47 | 1966-07-22 | 4 | 41.4 | 13.4 | 85 | 1969-11-24 | 3 | 48.1 | 22.4 | 0 | 1982-01-31 | 26.5 | 3.1 |
| 48 | 2004-09-22 | 2 | 41.2 | 19.5 | 0 | 2004-09-22 | 2 | 47.9 | 20.1 | 0 | 1969-03-13 | 26.3 | 2.3 |
| 49 | 1998-07-22 | 1 | 41.0 | 2.0 | 60 | 1991-11-16 | 1 | 46.9 | 24.6 | 0 | 1986-06-05 | 26.2 | 3.3 |
| 50 | 1962-05-13 | 2 | 40.9 | 16.9 | 99 | 1987-12-18 | 1 | 46.6 | 25.4 | 15 | 1998-07-23 | 24.6 | 0.7 |
| | 2013-05-30 | 5 | 123.2 | 43.3 | 97 | | | | | | 2013-06-02 | 119.6 | 33.3 |

Figure 6. EPEs, APEs and EFEs in the Czech Republic, 1961–2010. Colors denote the assignment of events to one or more types of extremes; the ratios of the FEI to the WEI and to the WAI are designated the C_e and C_a , respectively. For comparison, an extra event from May/June 2013 is represented by values of the WEI and the FEI.

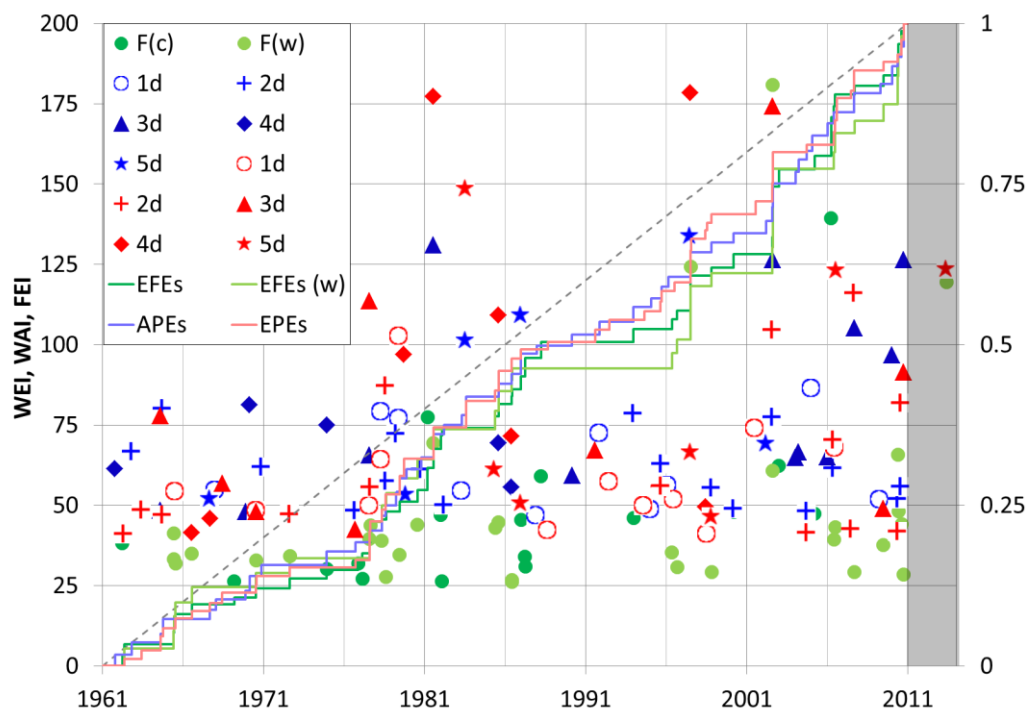


Figure 7. Temporal variability of extreme events, 1961–2010, in the Czech Republic. The red, blue, dark green, and light green symbols denote EPEs, APEs, EFEs during colder half-years (NDJFMA), and EFEs during warmer half-years (MJJASO), respectively. The symbol shapes denote the duration (# of days) of EPEs and APEs. The curves express relative cumulative values (right axis) of the WEI, the WAI, and the FEI (dark green denotes all seasons, light green denotes warmer half-years only).

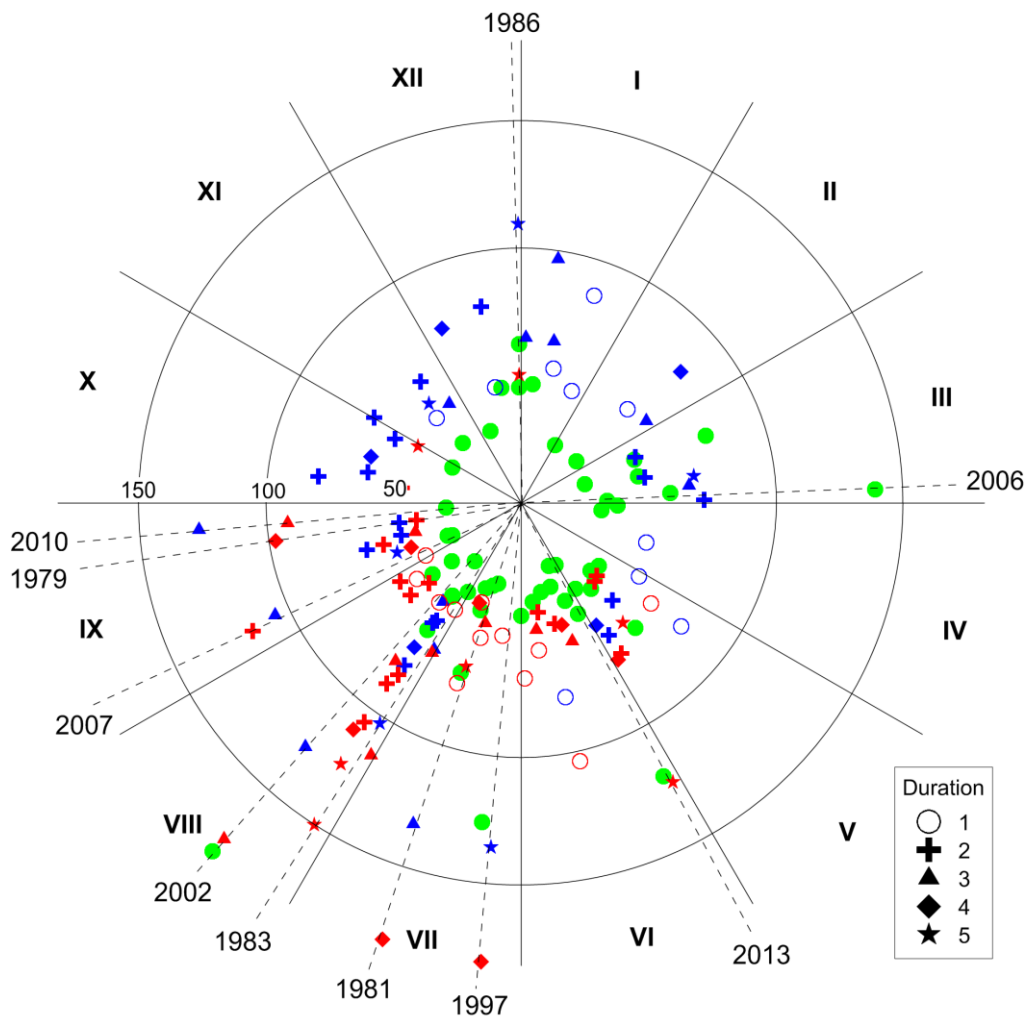


Figure 8. Seasonal distribution of extreme events in the Czech Republic, 1961–2010. EPEs were evaluated using the WEI (red), APEs using the WAI (blue), and EFEs using the FEI (green). Values of the indices are depicted by the distance of symbols from the center of the diagram. The shape of symbols depicts how many days the precipitation event lasted.

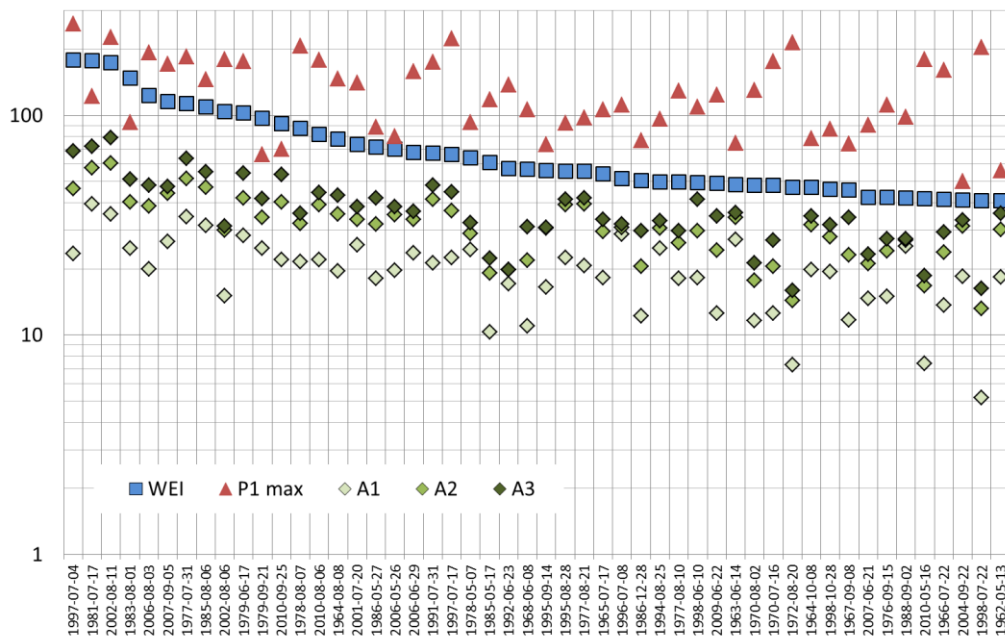


Figure 9. EPEs characterized by the WEI, maximum daily precipitation total [mm] at a site (P_1), and areal mean precipitation total [mm] in the Czech Republic recorded during 1 day (A_1), 2 days (A_2), and 3 days (A_3).

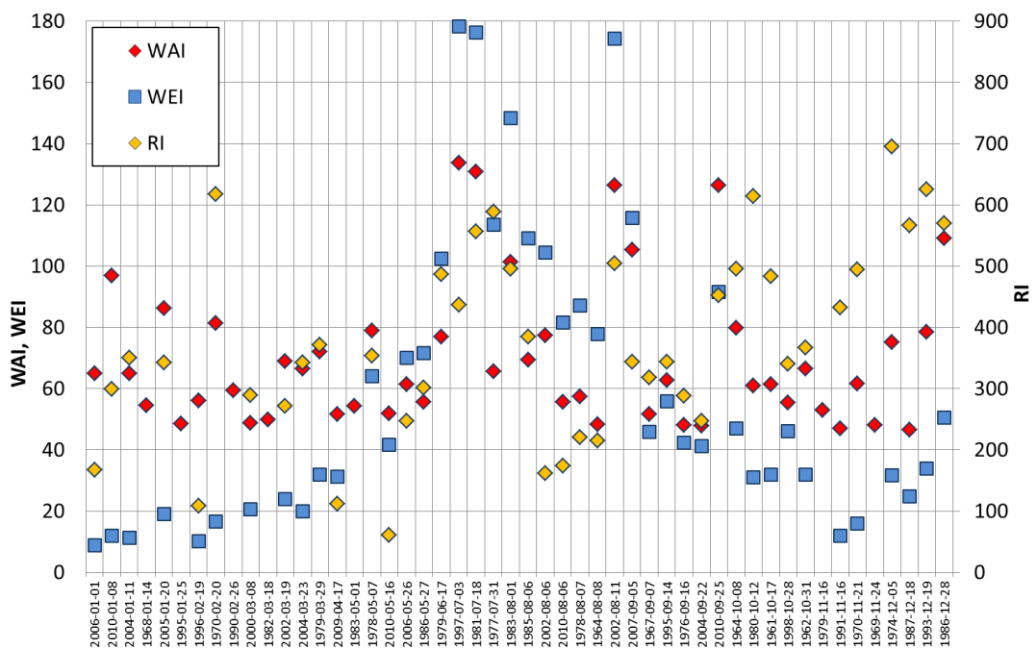


Figure 10. APEs characterized by the WAI, the WEI, and values of the index RI according to Ramos et al. (2014). The 50 APEs are ordered with respect to the calendar day in the increasing order.

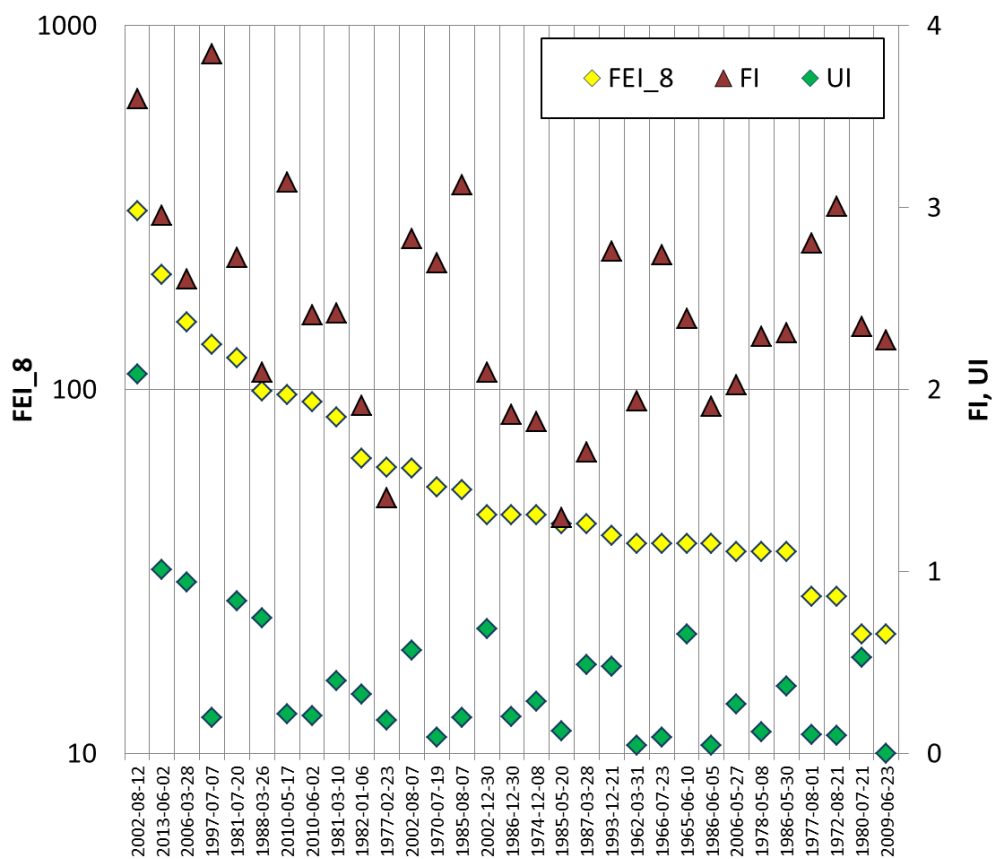
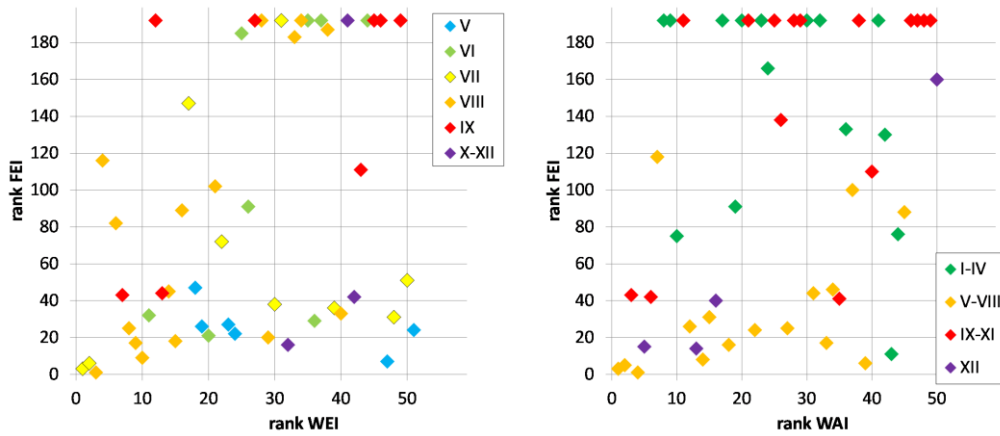


Figure 11. EFIs characterized by the FEI, the index by Uhlemann et al. (2010) (UI), and by the maximum Francou index (FI) calculated within 8 selected large Czech catchments.



1
2 Figure 12. Relationship between rankings of 50 maximum EPEs (left) / APEs (right) and
3 rankings of subsequent floods in various months (distinguished by colors). Precipitation
4 events, whose hydrological response was too small (no peak flow with return period at least 5
5 years), are depicted at the top of the diagram.