



Impacts of climate change on temperature, precipitation and hydrology in Finland

T. Olsson et al.

Impacts of climate change on temperature, precipitation and hydrology in Finland – studies using bias corrected Regional Climate Model data

T. Olsson¹, J. Jakkilä², N. Veijalainen², L. Backman¹, J. Kaurola¹, and B. Vehviläinen²

¹Finnish Meteorological Institute, Erik Palménin aukio 1, 00101, Helsinki, Finland

²Freshwater Centre, Finnish Environment Institute, Mechelininkatu 34a, P.O. Box 140, 00251, Helsinki, Finland

Received: 19 January 2015 – Accepted: 13 February 2015 – Published: 3 March 2015

Correspondence to: T. Olsson (taru.olsson@fmi.fi)

Published by Copernicus Publications on behalf of the European Geosciences Union.

[Title Page](#)

[Abstract](#)

[Introduction](#)

[Conclusions](#)

[References](#)

[Tables](#)

[Figures](#)

[⏪](#)

[⏩](#)

[◀](#)

[▶](#)

[Back](#)

[Close](#)

[Full Screen / Esc](#)

[Printer-friendly Version](#)

[Interactive Discussion](#)



Abstract

Assessment of climate change impacts on climate and hydrology on catchment scale requires reliable information about the average values and climate fluctuations of the past, present and future. Regional Climate Models (RCMs) used in impact studies often produce biased time series of meteorological variables. In this study bias correction of RCM temperature and precipitation for Finland is carried out using different versions of distribution based scaling (DBS) method. The DBS adjusted RCM data is used as input of a hydrological model to simulate changes in discharges in four study catchments in different parts of Finland. The annual mean discharges and seasonal variation simulated with the DBS adjusted temperature and precipitation data are sufficiently close to observed discharges in the control period (1961–2000) and produce more realistic projections for mean annual and seasonal changes in discharges than the uncorrected RCM data. Furthermore, with most scenarios the DBS method used preserves the temperature and precipitation trends of the uncorrected RCM data during 1961–2100. However, if the biases in the mean or the SD of the uncorrected temperatures are large, significant biases after DBS adjustment may remain or temperature trends may change, increasing the uncertainty of climate change projections. The DBS method influences especially the projected seasonal changes in discharges and the use of uncorrected data can produce unrealistic seasonal discharges and changes. The projected changes in annual mean discharges are moderate or small, but seasonal distribution of discharges will change significantly.

1 Introduction

Climate in Finland is boreal with temperate and sub-arctic features and four distinct seasons (Castro et al., 2007; Jylhä et al., 2009a). Winters are mostly cold and snowy and summers rather short, cool and rainy. Precipitation is moderate in all seasons. Hydrology in Finland is characterized by seasonal variation with snow accumulation

Impacts of climate change on temperature, precipitation and hydrology in Finland

T. Olsson et al.

[Title Page](#)

[Abstract](#)

[Introduction](#)

[Conclusions](#)

[References](#)

[Tables](#)

[Figures](#)

[⏪](#)

[⏩](#)

[◀](#)

[▶](#)

[Back](#)

[Close](#)

[Full Screen / Esc](#)

[Printer-friendly Version](#)

[Interactive Discussion](#)



HESSD

12, 2657–2706, 2015

Impacts of climate change on temperature, precipitation and hydrology in Finland

T. Olsson et al.

[Title Page](#)

[Abstract](#)

[Introduction](#)

[Conclusions](#)

[References](#)

[Tables](#)

[Figures](#)

[⏪](#)

[⏩](#)

[◀](#)

[▶](#)

[Back](#)

[Close](#)

[Full Screen / Esc](#)

[Printer-friendly Version](#)

[Interactive Discussion](#)

and low flow during winter, snowmelt with runoff peak in spring, another low flow season in summer and increasing runoffs towards autumn. Climate change is expected to significantly influence the hydrology in Finland. Climate zones are expected to shift towards north during this century, and the prevailing climate type would become more temperate and wet (Jylhä et al., 2009a). According to Jylhä et al. (2009b) annual mean temperature is likely to increase by 3–6°C by the end of this century, compared to 1971–2000. Precipitation is expected to increase 12–22% in Finland by the end of the century (Jylhä et al., 2009b), but the spatial distribution or the temporal cycle of the seasonal precipitation would not change significantly.

Changes in temperature will inevitably affect the snow and ice accumulation and melt processes as well as the extent of snow and ice cover. In southern Finland permanent snow cover will become rare by the end of the century (Ruosteenoja et al., 2011). Changes in temperature and precipitation and consequent changes in snow accumulation and melt will affect seasonal variation of river discharges and water levels of lakes. Because the temperature in winter will more frequently rise above zero degrees, winter discharges and water levels will increase, while spring snowmelt discharges decrease especially in southern and central Finland due to decreased snow accumulation (Vehviläinen and Huttunen, 1997; Veijalainen et al., 2010). The changes in river discharge and lake water levels will cause adaptation needs in water power production, flood protection and lake regulation (Veijalainen, 2012).

Regional and local climate change scenarios are needed for assessments of climate change impacts on hydrology and other sectors in Finland. The spatial resolution of Global Climate Models (GCM) (100–300 km) is insufficient to simulate regional scale events that are needed to capture different weather phenomena in a catchment scale. Projections of GCMs can be dynamically downscaled with Regional Climate Models (RCMs) to scales of 25–50 km, which represents the Finnish catchment scales better. Though nested models are more computationally demanding, dependent on GCM forcing and need detailed surface data, they are able to produce more detailed information on temporal and spatial scales than GCMs (Hewitson and Crane, 1996). This

information is necessary when RCM data is used as input for impact models such as hydrological models.

Although increased horizontal resolution can improve the simulation of regional and local climate features, RCMs still produce biases in the time series of climate variables (Christensen et al., 2008; Rauscher et al., 2010). RCMs are found to have lower skill to reproduce temperature and precipitation in colder regions (Teutschbein and Seibert, 2012) and have difficulties to reproduce realistic values near coast line and lakes in Finland (Jylhä et al., 2009b). Hydrological simulations using the RCM data as direct input are sensitive to RCM biases (Wood et al., 2004) and especially regions such as Finland, where seasonal snowpack causes a time shift in runoff generation, are sensitive to temperature bias (Wood et al., 2004; Veijalainen et al., 2012). Therefore an efficient bias correction method for both precipitation and temperature should be applied to the RCM data.

Several approaches are available for adjusting RCM variables; these can be divided into Delta Change (DC) and Bias Correction (BC) methods. The DC approach adjusts observations with the RCM climate change signal, whereas the BC approach adjusts the daily RCM simulated variables based on the difference between observed and simulated climate in the control period. Compared to the DC method the BC approach usually better preserves the future variability in temperature and precipitation produced by the RCMs, enables representation of complex changes in climate related to changes in mesoscale weather conditions and enables transient scenarios instead of comparison between time slices (Graham et al., 2007; Lenderink et al., 2007; Beldring et al., 2008; Yang et al., 2010). Bias correction methods have been proved to improve daily mean, SD, and distribution of the RCM temperature and precipitation when compared to observed climate statistics (e.g. Yang et al., 2010; Teutschbein and Seibert, 2012; Räisänen and Rätty, 2013; Rätty et al., 2014).

In this paper, bias corrected RCM data sets of precipitation and temperature covering the area of Finland are produced. Two versions of a distribution based bias correction method are evaluated for temperature and precipitation. In addition, a simple mean

HESSD

12, 2657–2706, 2015

Impacts of climate change on temperature, precipitation and hydrology in Finland

T. Olsson et al.

[Title Page](#)

[Abstract](#)

[Introduction](#)

[Conclusions](#)

[References](#)

[Tables](#)

[Figures](#)

[◀](#)

[▶](#)

[◀](#)

[▶](#)

[Back](#)

[Close](#)

[Full Screen / Esc](#)

[Printer-friendly Version](#)

[Interactive Discussion](#)

Impacts of climate change on temperature, precipitation and hydrology in Finland

T. Olsson et al.

[Title Page](#)[Abstract](#)[Introduction](#)[Conclusions](#)[References](#)[Tables](#)[Figures](#)[◀](#)[▶](#)[◀](#)[▶](#)[Back](#)[Close](#)[Full Screen / Esc](#)[Printer-friendly Version](#)[Interactive Discussion](#)

bias correction is applied for daily wind speed and specific humidity, which are used in simulation of lake evaporation in the hydrological model. These bias corrected values are then used as input of the hydrological model to simulate discharges and their changes due to climate change in selected catchments. The goal is to evaluate the DBS method in climate change impact studies of river discharges in Finland. This article focuses on annual and seasonal mean values, while a second part of the study in a separate paper will focus on extremes, especially heavy precipitations and floods, and their changes.

2 Materials and methods

In this study climate scenarios from RCMs are first bias corrected using observations of temperature, precipitation, wind speed and humidity and then used to produce hydrological scenarios for the study catchments (Fig. 1).

2.1 Study catchments

Four catchments located in different parts of Finland were selected as study catchments (Fig. 2). These represent different hydrological regions in Finland. Loimijoki (Maurialankoski observation station, catchment area 2650 km², lake percentage 3.1) is a medium sized river with high proportion of cultivated area on clay soils. Nilakka (catchment area 2160 km², 18 % lake percentage) and Lentua (2050 km², 13 %) observation stations are located at lake outlets in central Finland characterized by numerous lakes. Ounasjoki (Marraskoski observation station, 12 300 km², 2.6 %) is a large river in northern Finland (Fig. 2) (Korhonen and Kuusisto, 2010). All the study catchments have long water level and discharge observation series, longest from 1912 onwards (Lentua) and shortest from 1935 onwards (Loimijoki).

Annual mean runoff in the study catchments varies from 280 to 370 mm. Runoff has a distinct seasonal variation with low values during winter and summer and a maximum

in spring due to snowmelt. The average maximum snow water equivalent varies from 80–100 mm in the southern catchment (Loimijoki) to 180 mm in the northern Ounasjoki catchment (Perälä and Reuna, 1990). Annual soil and lake evaporation gradually decrease from southern Loimijoki (soil 400 mm, lake 540 mm) to northern Ounasjoki (soil 220 mm, lake 310 mm) (Hyvärinen et al., 1995). Autumn precipitation causes a second runoff peak, which is usually smaller than the spring peak. The spring floods are more pronounced in northern and central Finland (Ounasjoki, Lentua, Nilakka), while in southern Finland (Loimijoki) heavy rains in summer and autumn or rains with snowmelt in winter may cause major floods as well.

2.2 Observations and RCM data

Bias corrections were calculated for the entire Finland including transboundary watershed areas in Norway, Sweden and Russia. The gridded data sets needed for the bias correction were calculated using observations from approximately 190 stations with daily temperature measurements at 2 m height and 250 stations with daily precipitation measurements from the Finnish Meteorological Institute. Additional observations from 11 temperature and 16 precipitation observation stations in Norway, Sweden and Russia were provided by the Norwegian Meteorological Institute, the Swedish Meteorological and Hydrological Institute (SMHI) and the Hydrometeorological Centre of Russia. Observations from 1961–2000 were used although the observation network varies during this period.

Gauge precipitation observations especially for snowfall contain various systematic measurement errors (Førland et al., 1996; Taskinen, 2014), which need to be corrected before they can be used for bias correction of RCM data. The correction of precipitation measurements consisted of the exposure method for aerodynamic correction as well as wetting and evaporation corrections (Taskinen, 2014). The areal values of the meteorological observations for each sub-basin are calculated from three closest observation stations by inverse distance weighting taking into account the elevation differences and the gridded values are calculated based on these areal values. The areal values

HESSD

12, 2657–2706, 2015

Impacts of climate change on temperature, precipitation and hydrology in Finland

T. Olsson et al.

[Title Page](#)

[Abstract](#)

[Introduction](#)

[Conclusions](#)

[References](#)

[Tables](#)

[Figures](#)

[⏪](#)

[⏩](#)

[◀](#)

[▶](#)

[Back](#)

[Close](#)

[Full Screen / Esc](#)

[Printer-friendly Version](#)

[Interactive Discussion](#)



were converted to 1 km × 1 km grid to calculate the average values of the same regular 0.25° lat × 0.25° long grid as the RCM data.

The observations of relative humidity at 2 m and wind speed at 10 m are used in the simulation of lake evaporation, which is an important hydrological variable for catchments in the lake area. The areal values are calculated in similar way as temperature and precipitation and the effect of fetch to the wind speed on a lake is calculated as in Resio and Vincent (1977).

Five climate scenarios were used from four different RCMs forced with four different GCMs as given in Table 1. The data was retrieved from ENSEMBLES Research team 3 database (ensemblesrt3.dmi.dk, van der Linden and Mitchell, 2009). The GCMs were run under historic (1961–2000) and with A1B scenario (2001–2100) forcing. The GCM output was then used as boundary conditions to force RCMs over a common European domain in a regular 0.25° lat × 0.25° long grid (van der Linden and Mitchell, 2009).

2.3 Bias correction methods

The distribution based scaling (DBS) method described e.g. in Yang et al. (2010) and Teutschbein and Seibert (2012) was used to scale temperature and precipitation time series to better represent observed distributions. The correction procedures using Cumulative Distribution Functions (CDF) are shown in Fig. 3. In this study CDFs are constructed on a daily basis for temperature and for all days with certain month for precipitation. The method of maximum likelihood is used to estimate distribution parameters.

Temperature (T) is described by a Gaussian (normal) distribution with daily mean (μ) and SD (σ). The DBS approach for temperature included four steps: (1) to take into account the dependence between precipitation and temperature, the temperature data were divided into wet and dry days resulting in two sets of parameters; (μ_w, σ_w) for wet days and (μ_d, σ_d) for dry days, hereafter referred to as ($\mu_{w/d}, \sigma_{w/d}$). The separation was conducted after excessive drizzle days were removed (described below, Eqs. 5 and 6). In this study we also use the distribution parameters without wet/dry state separation (μ, σ). (2) To take into account seasonal variations, daily mean and SD

HESSD

12, 2667–2706, 2015

Impacts of climate change on temperature, precipitation and hydrology in Finland

T. Olsson et al.

Title Page

Abstract

Introduction

Conclusions

References

Tables

Figures

◀

▶

◀

▶

Back

Close

Full Screen / Esc

Printer-friendly Version

Interactive Discussion



were calculated using a 15 day moving window and (3) were further smoothed with Fourier series with five harmonics on a daily basis over the control period (1961–2000). (4) These smoothed daily mean and SD for each grid point were then used to calculate the daily (d) CDFs for observations ($\mu_{\text{obs}}, \sigma_{\text{obs}}$) and RCMs ($\mu_{\text{contr}}, \sigma_{\text{contr}}$) for the control period (Fig. 3). DBS parameters for the control period were used also to adjust the scenario runs. DBS procedure expressed in terms of Gaussian CDF without wet/dry separation:

$$T_{\text{contr}}(d) = F^{-1} \left(F \left(T_{\text{contr}}(d) \mid \mu_{\text{contr}}, \sigma_{\text{contr}}^2 \right) \mid \mu_{\text{obs}}, \sigma_{\text{obs}}^2 \right) \quad (1)$$

$$T_{\text{sken}}(d) = F^{-1} \left(F \left(T_{\text{sken}}(d) \mid \mu_{\text{contr}}, \sigma_{\text{contr}}^2 \right) \mid \mu_{\text{obs}}, \sigma_{\text{obs}}^2 \right) \quad (2)$$

DBS procedure expressed in terms of Gaussian CDF with wet/dry separation:

$$T_{\text{contr,w/d}}(d) = F^{-1} \left(F \left(T_{\text{contr,w/d}}(d) \mid \mu_{\text{contr,w/d}}, \sigma_{\text{contr,w/d}}^2 \right) \mid \mu_{\text{obs,w/d}}, \sigma_{\text{obs,w/d}}^2 \right) \quad (3)$$

$$T_{\text{sken,w/d}}(d) = F^{-1} \left(F \left(T_{\text{sken,w/d}}(d) \mid \mu_{\text{contr,w/d}}, \sigma_{\text{contr,w/d}}^2 \right) \mid \mu_{\text{obs,w/d}}, \sigma_{\text{obs,w/d}}^2 \right) \quad (4)$$

For precipitation (P) single and double gamma distributions were used in four steps. In contrast to Yang et al. (2010) where the DBS parameters (shape α and scale β) were estimated seasonally, we estimated DBS parameters on a monthly basis. Also seasonally optimized parameters were tried out, but these produced too high monthly precipitation sums for Finland (not shown) and thus were not used. (1) For both distributions, excessive drizzle days in the RCM data were first removed by defining a cut-off value ($P_{\text{th, contr, m}}$) that reduced the percentage of wet days in the RCMs to that of the observations on a monthly (m) basis. In this study only days with observed precipitation larger than 0.1 mm ($P_{\text{th, obs, m}}$) were considered wet days, and the rest dry days. A monthly precipitation threshold value for each RCM control run ($P_{\text{th, contr, m}}$) was then set to the cut-off value so that the percentage of RCM simulated and observed wet days matched (Eq. 5). To enable the scenario run to have different wet day frequency

Impacts of climate change on temperature, precipitation and hydrology in Finland

T. Olsson et al.

Title Page

Abstract

Introduction

Conclusions

References

Tables

Figures

◀

▶

◀

▶

Back

Close

Full Screen / Esc

Printer-friendly Version

Interactive Discussion



than the control run the same threshold value was used to reduce the drizzle days for future period (Eq. 6). Precipitation amounts smaller than the threshold value were not redistributed to the remaining wet days.

$$P_{\text{contr}}(d) = \begin{cases} 0, & \text{if } P_{\text{contr}}(d) < P_{\text{th, contr, m}} \\ P_{\text{contr}}, & \text{otherwise} \end{cases} \quad (5)$$

$$P_{\text{sken}}(d) = \begin{cases} 0, & \text{if } P_{\text{sken}}(d) < P_{\text{th, contr, m}} \\ P_{\text{sken}}, & \text{otherwise} \end{cases} \quad (6)$$

(2) The remaining daily precipitation was adjusted to match the observed frequency distribution using single gamma distribution (Eq. 7). (3) To better capture the extreme precipitation events also a double gamma distribution was used, then the observed and RCM generated precipitation distributions were separated into two partitions by the 95th percentile ($P_{\text{obs,95th}}$, $P_{\text{contr,95th}}$), resulting into two sets of parameters (α_1 , β_1) for below the 95th percentile precipitation and (α_2 , β_2) above it. (4) These monthly parameters for each grid point were then used to calculate the CDFs for observations (α_{obs} , β_{obs}) and RCMs (α_{contr} , β_{contr}) during the control period (Eqs. 9 and 10, Fig. 3). Monthly DBS parameters for the control period and the 95th percentile threshold ($P_{\text{contr,95th}}$) were used also for the scenario runs (Eqs. 8, 11 and 12). The DBS procedure expressed in terms of single gamma CDF:

$$P_{\text{contr}}(d) = F^{-1}(F(P_{\text{contr}}(d)|\alpha_{\text{contr, m}}, \beta_{\text{contr, m}})|\alpha_{\text{obs, m}}, \beta_{\text{obs, m}}) \quad (7)$$

$$P_{\text{sken}}(d) = F^{-1}(F(P_{\text{sken}}(d)|\alpha_{\text{contr, m}}, \beta_{\text{contr, m}})|\alpha_{\text{obs, m}}, \beta_{\text{obs, m}}) \quad (8)$$

Impacts of climate change on temperature, precipitation and hydrology in Finland

T. Olsson et al.

[Title Page](#)

[Abstract](#)

[Introduction](#)

[Conclusions](#)

[References](#)

[Tables](#)

[Figures](#)

[◀](#)

[▶](#)

[◀](#)

[▶](#)

[Back](#)

[Close](#)

[Full Screen / Esc](#)

[Printer-friendly Version](#)

[Interactive Discussion](#)



The DBS procedure expressed in terms of double gamma CDF:

$$P_{\text{contr},1}(d) = F^{-1}(F(P_{\text{contr}}(d)|\alpha_{\text{contr}1,m},\beta_{\text{contr}1,m})|\alpha_{\text{obs}1,m},\beta_{\text{obs}1,m}),$$

if $P_{\text{contr}}(d) < P_{\text{contr},95\text{th}}(m)$ (9)

$$P_{\text{contr},2}(d) = F^{-1}(F(P_{\text{contr}}(d)|\alpha_{\text{contr}2,m},\beta_{\text{contr}2,m})|\alpha_{\text{obs}2,m},\beta_{\text{obs}2,m}),$$

if $P_{\text{contr}}(d) \geq P_{\text{contr},95\text{th}}(m)$ (10)

$$P_{\text{sken},1}(d) = F^{-1}(F(P_{\text{sken}}(d)|\alpha_{\text{contr}1,m},\beta_{\text{contr}1,m})|\alpha_{\text{obs}1,m},\beta_{\text{obs}1,m}),$$

if $P_{\text{sken}}(d) < P_{\text{contr},95\text{th}}(m)$ (11)

$$P_{\text{sken},2}(d) = F^{-1}(F(P_{\text{sken}}(d)|\alpha_{\text{contr}2,m},\beta_{\text{contr}2,m})|\alpha_{\text{obs}2,m},\beta_{\text{obs}2,m}),$$

if $P_{\text{sken}}(d) \geq P_{\text{contr},95\text{th}}(m)$ (12)

Wind speed and specific humidity of the RCM data were corrected by adding the monthly mean differences between the observations and the RCMs. The same corrections were used also in the scenario periods. Since the wind speed and specific humidity affect only the calculation of lake evaporation in the hydrological model, this simple bias correction works sufficiently well to achieve corresponding water level and discharge distribution as with observed input variables.

2.4 Hydrological model and modelling approaches

The hydrological model used in this paper was from the Watershed Simulation and Forecasting System (WSFS). It is a conceptual hydrological model developed and operated at Finnish Environment Institute (SYKE) (Vehviläinen et al., 2005). The WSFS is used as the national hydrological forecasting and flood warning system (Finnish Environment Institute, 2011) as well as for research purposes (e.g. Veijalainen et al., 2012; Jakkila et al., 2014; Huttunen et al., 2014). The conceptual rainfall–runoff model in the WSFS is based on the HBV (Hydrologiska Byråns Vattenbalansavdelning) model structure developed at SMHI (Bergström, 1976), but the models differ from each other e.g. in the river routing, catchment description and in some process models such as

Title Page

Abstract

Introduction

Conclusions

References

Tables

Figures

◀

▶

◀

▶

Back

Close

Full Screen / Esc

Printer-friendly Version

Interactive Discussion

the snow model (Vehviläinen, 1992; Vehviläinen et al., 2005). HBV-type models have been used in several climate change impacts studies in different parts of the world (e.g. Steele-Dunne et al., 2008; van Pelt et al., 2009), most commonly in Scandinavia (e.g. Andréasson et al., 2004; Beldring et al., 2008)

5 The WSFS hydrological model consists of small sub-catchments, numbering over 6000 in Finland with an average size of 60 km² (20–500 km²) (Vehviläinen et al., 2005). The water balance is simulated for each sub-catchment, and sub-catchments are connected to produce the water balance and simulate water storage and transfer in the river and lake network within the entire catchment. The sub-models in WSFS include
10 a precipitation model calculating areal value and form for precipitation, a snow accumulation and melt model based on the temperature-index (degree-day) approach, a rainfall–runoff model with soil moisture, sub-surface and groundwater storages, and models for lake and river routing.

15 The WSFS was calibrated against water level, discharge and snow line water equivalent observations from 1981–2012. The Nash–Sutcliffe efficiency criterion R^2 (Nash and Sutcliffe, 1970) for the control period 1961–2000 in the four case study catchments was 0.78 for Loimijoki, 0.80 for Nilakka, 0.87 for Lentua, 0.87 for Ounasjoki.

3 Results

20 A distinct seasonal cycle can be seen in both temperature and precipitation in Finland (Fig. 4). Annual mean temperature varies from above 5 °C in South Finland to below –2 °C in North Finland with maximum monthly mean temperatures in July (ca. 15 °C) and minimum in January–February (ca. –12 °C). The primary peak in seasonal precipitation accumulation occurs in summer (ca. 220 mm season⁻¹) and secondary in autumn (ca. 180 mm season⁻¹), spring being the driest season (ca. 110 mm season⁻¹).

Impacts of climate change on temperature, precipitation and hydrology in Finland

T. Olsson et al.

Title Page

Abstract

Introduction

Conclusions

References

Tables

Figures

◀

▶

◀

▶

Back

Close

Full Screen / Esc

Printer-friendly Version

Interactive Discussion

3.1 RCM temperature and precipitation in control period

The five RCMs used in this study are able to capture the annual cycle of temperature in the control period quite well, but monthly temperatures are commonly underestimated throughout the year except in winter by RCA and REMO and in autumn by HIRHAM-A (Fig. 4). The cumulative distribution functions show that all RCMs cumulate too many below 0°C temperatures and too few above 0°C temperatures especially in spring, although also in winter and autumn (Fig. 5).

There are prominent differences in the ability of RCMs to capture the annual cycle of precipitation during the control period (Fig. 4). All models in this study heavily overestimate precipitation accumulation almost throughout the year with some exceptions in summer and winter. Especially HIRHAM-A and HIRHAM-B produce too much precipitation in spring and autumn and are too dry in summer. The overestimation in accumulated precipitation is relatively largest in spring, varying from 2.6–61 % in Nilakka to 24–81 % in Ounasjoki (Table 2). All RCMs show a higher percentage of wet days than observed, which is caused by too high percentage of light precipitation ($\leq 1 \text{ mm day}^{-1}$, Fig. 6). Occurrence of heavy ($> 20 \text{ mm day}^{-1}$) precipitation events is overestimated in RCMs in every catchment and season.

After applying the DBS method, biases in seasonally calculated daily mean temperatures in uncorrected RCM data are significantly reduced (Figs. 4 and 5), from -8.7 – 5.3 °C to -0.2 – 0.5 °C. Also the SD of the DBS adjusted values is closer to observed values than that of uncorrected RCM data (not shown). DBS scaling preserves the RCM temperature variability in CDFs. The strong temperature increase around 0°C found in the uncorrected RCM data is reduced after DBS scaling but can still be found from the CDFs (Fig. 5), although shifted towards observed values and higher temperatures. Daily temperatures adjusted with wet/dry separation produce more frequently higher winter maxima (> 5 °C) and lower minima (< -30 °C) than adjustment without the separation (Fig. 7). This is due to fewer days available for dry and wet state DBS after separation and the small amount of dry days which affects especially the CDF of

[Title Page](#)

[Abstract](#)

[Introduction](#)

[Conclusions](#)

[References](#)

[Tables](#)

[Figures](#)

[⏪](#)

[⏩](#)

[◀](#)

[▶](#)

[Back](#)

[Close](#)

[Full Screen / Esc](#)

[Printer-friendly Version](#)

[Interactive Discussion](#)

dry days. Otherwise there are no distinct differences between the two DBS approaches (Figs. 4, 5 and 7), both give distributions that are similar to the observations.

Both single and double gamma DBS approaches for precipitation are able to reduce biases in seasonal precipitation accumulation from -22 – 81 to -3.0 – 1.7 % (Figs. 4 and 6, Table 2) in all catchments. Distribution of drizzle and torrential precipitation is shifted towards observations and the amount of dry days is forced to match observed values (Fig. 6).

There are no considerable differences in monthly mean accumulated precipitation between single and double gamma DBS. The largest differences are found in the treatment of heavy (> 20 mm) precipitation (Figs. 6 and 8). Due to a longer tail in the single gamma distribution in the heavy precipitation end of the distribution, the high values are in many cases larger and more frequent with single gamma than with double gamma DBS. In some cases the single gamma DBS approach even increases torrential precipitation values compared to observed values. In most cases the double gamma distribution produces torrential precipitation values closer to observed values than single gamma.

3.2 Impact of bias correction on simulated hydrology

The discharges simulated with uncorrected RCM values (Fig. 9) show large differences compared to the observed discharges and discharges simulated with observed meteorological input values in the control period (hereinafter referred to as “control simulation”). The differences in simulated mean discharges in the control simulation and using RCM data with and without DBS adjustment for Loimijoki and Ounasjoki test sites are shown in Table 3. In the four test sites the annual mean discharges simulated with uncorrected RCM inputs were 16 – 104 % larger than annual mean discharges of the control simulation. The higher annual mean discharges are mainly caused by over-estimation of precipitation in RCMs.

The seasonal differences are more pronouncedly affected by temperature biases in the RCM data. The HadRM and HIRHAM-B have negative temperature biases during

Impacts of climate change on temperature, precipitation and hydrology in Finland

T. Olsson et al.

Title Page

Abstract

Introduction

Conclusions

References

Tables

Figures

⏪

⏩

◀

▶

Back

Close

Full Screen / Esc

Printer-friendly Version

Interactive Discussion



Impacts of climate change on temperature, precipitation and hydrology in Finland

T. Olsson et al.

[Title Page](#)

[Abstract](#)

[Introduction](#)

[Conclusions](#)

[References](#)

[Tables](#)

[Figures](#)

[⏪](#)

[⏩](#)

[◀](#)

[▶](#)

[Back](#)

[Close](#)

[Full Screen / Esc](#)

[Printer-friendly Version](#)

[Interactive Discussion](#)

winter, which cause smaller winter discharges in Southern and Central Finland. The negative temperature biases in spring (HIRHAM-B) cause delay to the spring flood peak (Fig. 9). This delay causes negative biases to mean spring discharges in Northern Finland even though the snowmelt floods are larger due to greater snow accumulation caused by positive precipitation and negative temperature biases. Summer mean discharges become larger with all uncorrected RCM outputs due to positive precipitation biases and larger recession flows caused by greater and delayed spring floods.

Because of the biases in RCM data the spring mean discharges are in some cases double or even triple compared to control simulation discharges, and the seasonal variation of discharges is also altered. Without effective bias correction the results of climate change impact studies could easily lead to false conclusions.

Using single gamma or double gamma precipitation corrections and temperature corrections without wet/dry separation the biases in simulated mean discharges can be effectively reduced (Table 4). The differences in annual mean discharges decreased to less than 12 % in all test sites with DBS adjusted RCM outputs. The difference is at the same level as the difference between control simulation discharges and observed discharges (less than 13 %), which indicates that biases in annual mean discharges are partly explained by the model sensitivity on input variables and partly by the residual biases in corrected RCM outputs. All four combinations of DBS temperature and precipitation correction methods used here produce similar results and none of the different DBS approaches are found to be superior with respect to mean discharges.

The differences in seasonal mean discharges between simulations with DBS adjusted RCM data and control simulation are in many cases larger than differences between observed discharges and discharges in the control simulation. Differences larger than 30 % are only found in winter and summer, when the discharges are low. But the remaining biases larger than 20 % during high flow season in Loimijoki found in REMO and RCA and larger than 50 % during the low flow season in HadRM and HIRHAM-B may have significant effect on the seasonal changes and changes in extreme discharges in climate change projections. However, the seasonal variations in

mean discharges after DBS adjustment are remarkably closer to results from control simulation (Fig. 9), highlighting the fact that the bias correction is required for RCM data used in studies of climate change effects on hydrology.

In addition to biases in RCM temperature and precipitation data, also the biases in wind speed (WS) and specific humidity (SH) affect the WSFS discharge simulations for catchments with high lake percentages. Biases in WS and SH of RCMs affect the lake evaporation in the hydrological model and typically cause a 5–45 % bias in the annual lake evaporation sums. In most of the study catchments the bias is largest in the RCA scenario giving 25–35 % negative bias caused by positive bias of SH and negative bias of WS. The bias in lake evaporation can be effectively decreased to 0–13 % by the simple mean bias correction method (Fig. 10).

The uncorrected WS and SH of RCMs cause a 0–11 % bias in annual mean discharges, and a 0–20 % bias in autumn mean discharges in the outlet of Nilakka, which has the highest lake percentage of the study catchments (18 %). In the catchments of Loimijoki and Lentua the biases in mean discharges (0–2 and 0–4 %) and autumn discharges (0–7 and 0–8 %) are smaller and in the most northern located catchment of Ounasjoki the bias is insignificant.

3.3 RCM temperature and precipitation in the future

Finland is expected to experience a warmer and wetter climate towards the end of this century. Future changes in seasonal precipitation and mean temperature in Loimijoki catchment are shown in Table 4. After DBS adjustment, seasonal temperature increase varies from 1.4–5.1 °C in Loimijoki and 1.3–6.6 °C in Ounasjoki in the latter part of this century, being largest in winter. As for the control period, the DBS approach with wet/dry day separation produces higher temperature maxima for the scenario period compared to DBS approach without separation. Thus it also produces higher seasonal mean values than DBS scaling without wet/dry separation. No distinct differences between the single and double gamma DBS approaches can be found for monthly and seasonal mean precipitation sums. Again, the greatest differences can be found from

Impacts of climate change on temperature, precipitation and hydrology in Finland

T. Olsson et al.

[Title Page](#)

[Abstract](#)

[Introduction](#)

[Conclusions](#)

[References](#)

[Tables](#)

[Figures](#)

[⏪](#)

[⏩](#)

[◀](#)

[▶](#)

[Back](#)

[Close](#)

[Full Screen / Esc](#)

[Printer-friendly Version](#)

[Interactive Discussion](#)



torrential precipitations, which are more frequent and intense in single gamma than in double gamma DBS adjusted values. Future changes in seasonal precipitation sums vary more than temperature depending on RCM as well as season and area of investigation, and can even decrease by the end of this century. After DBS adjustment the change in seasonal precipitation sums varies between 1.7–39 % in Nilakka to –4.6–38 % in Loimijoki by the end of this century, being largest in winter.

The DBS method preserves the temperature trend of the uncorrected RCM data during 1961–2100 relatively well (Table 5, Fig. 11). The projected temperature trends in uncorrected RCM data vary between 0.3 and 0.5 °C decade⁻¹ in the used scenarios. The difference between uncorrected RCM and DBS adjusted seasonal trends are mainly less than ±0.1 °C decade⁻¹ (Table 5). The largest differences between temperature trends in uncorrected and DBS adjusted data can be seen in the scenarios of REMO and RCA, which produce more than 0.1 °C decade⁻¹ larger temperature rise after DBS (Fig. 11). This is probably due to a too narrow temperature distribution (low SD) in the control period compared to observed values (not shown). In the scenario period the SD decreases even further, with increasing daily temperatures, causing more pronounced warming after DBS adjustment. Other climate models in this study do not produce any prominent decrease in SD during the scenario period and thus the trends are better preserved.

Also trends in precipitation are preserved sufficiently well among RCMs after DBS adjustment and no distinct differences between RCMs or the two DBS methods can be found. In Loimijoki and Ounasjoki catchments most of the uncorrected scenarios show positive precipitation trends from 1.1 to 4.2 mm decade⁻¹ (Table 5). Only HIRHAM-A in Loimijoki and REMO in Ounasjoki do not show significant trends. The differences between RCM and adjusted seasonal trends are mainly from –0.6 to +0.3 mm decade⁻¹ (Table 5). The largest differences between trends of uncorrected and DBS adjusted RCM data can be seen in seasonal precipitation simulated by HadRM in Ounasjoki (from –1.9 to –1.6 mm decade⁻¹) (Fig. 12). The trend simulated by HIRHAM-B is largest in spring in all catchments, which causes the large increase in precipitation

HESSD

12, 2657–2706, 2015

Impacts of climate change on temperature, precipitation and hydrology in Finland

T. Olsson et al.

[Title Page](#)

[Abstract](#)

[Introduction](#)

[Conclusions](#)

[References](#)

[Tables](#)

[Figures](#)

[⏪](#)

[⏩](#)

[◀](#)

[▶](#)

[Back](#)

[Close](#)

[Full Screen / Esc](#)

[Printer-friendly Version](#)

[Interactive Discussion](#)



accumulation (Table 4). Even though the trends are largest in winter or spring, the summer and autumn remain the wettest seasons of the year.

3.4 Future scenarios for discharges

The results show that climate change will have significant impacts on seasonality of discharges in Finland due to increasing precipitation and shorter wintertime, which influence snow accumulation and increase evapotranspiration (Fig. 13). The springtime snowmelt floods will occur earlier and the average wintertime discharges will increase because the temperature will rise more often above zero in winter increasing rainfall and causing occasional snowmelt. The summer discharges will decrease due to earlier snowmelt and increased evapotranspiration, while the changes in autumn depend on the climate scenario, location and hydrological characteristics such as lake percentage of the study catchments. The DBS method influences significantly the projected changes of the seasonal discharges and in some cases even the annual discharges of the scenarios with large temperature biases.

The changes in annual mean discharges between the control and 2051–2090 periods in all study catchments are between –15–26 % (Table 6). For the period 2051–2090 HIRHAM-B produces largest increases in annual mean discharges in all study catchments due to largest increases in annual mean precipitation. Most of the scenarios show an increase in annual discharges, but especially for Southern and Central Finland some scenarios project decrease because the longer and warmer summers cause larger increase in evapotranspiration than the projected increase in precipitation.

3.4.1 Effect of bias correction

As shown above, in most of the scenarios the precipitation and temperature trends are preserved well when the DBS adjustment is applied (Figs. 11 and 12). Also in most scenarios the relative changes from control period to 2051–2090 in simulated annual mean discharges using DBS adjusted data are close to corresponding changes of un-

Impacts of climate change on temperature, precipitation and hydrology in Finland

T. Olsson et al.

[Title Page](#)

[Abstract](#)

[Introduction](#)

[Conclusions](#)

[References](#)

[Tables](#)

[Figures](#)

[⏪](#)

[⏩](#)

[◀](#)

[▶](#)

[Back](#)

[Close](#)

[Full Screen / Esc](#)

[Printer-friendly Version](#)

[Interactive Discussion](#)



Impacts of climate change on temperature, precipitation and hydrology in Finland

T. Olsson et al.

[Title Page](#)[Abstract](#)[Introduction](#)[Conclusions](#)[References](#)[Tables](#)[Figures](#)[◀](#)[▶](#)[◀](#)[▶](#)[Back](#)[Close](#)[Full Screen / Esc](#)[Printer-friendly Version](#)[Interactive Discussion](#)

corrected scenarios (Table 6). In the HadRM-scenario the DBS adjusted data produce a lower increase than the uncorrected scenario in Northern Finland, due to smaller increase in precipitation trends after DBS adjustment. In other scenarios the precipitation trends are preserved rather well. However, in HIRHAM-B-scenario the DBS adjusted data produces relatively larger increase in annual discharges than uncorrected series in Nilakka and Loimijoki. The DBS adjusted data in this scenario produce smaller relative increase in annual evaporation sums than uncorrected data, because the large cold bias in the uncorrected data produces low annual evaporation sums in the control period, but large relative change for the 2051–2090 period.

The effect of DBS adjustment on changes in seasonal mean discharges is more pronounced than on annual discharges, because the temperature biases of uncorrected data have significant influence on seasonal discharges. In Southern Finland the scenarios with cold temperature bias in winter, i.e. HadRM and HIRHAM-B, produce small discharges in winter and large discharges in spring and summer after the snow melt period. Thus these scenarios show much larger increase in winter discharges with uncorrected than with DBS adjusted RCM data. The scenarios with warm bias in uncorrected temperature, i.e. REMO and RCA-scenarios, cause vice versa smaller changes in mean winter discharges with uncorrected data. One of the most notable differences between uncorrected and DBS adjusted seasonal changes can be seen in summer mean discharges of HIRHAM-B-scenario. The uncorrected HIRHAM-B scenario shows 35 % decrease in summer discharges in Loimijoki due to large recession flow after spring flood in the control period, which caused over 300 % wet bias in mean summer discharges. The DBS adjusted data of HIRHAM-B show a slight increase in summer discharges because large precipitation increase compensates the increased evapotranspiration in this scenario.

In northern Finland the differences between the results from simulations with uncorrected and DBS adjusted data are clearest in spring, when the absolute biases in mean discharges in the control period are highest. The uncorrected HIRHAM-A and HIRHAM-B produce negative bias in mean spring discharges in the control period due

to a delayed spring flood. Thus these scenarios produce too high increases in mean spring discharges without bias corrections.

3.4.2 Impact of climate change

In the study catchments all DBS adjusted scenarios predict on average 2–4 weeks earlier snowmelt discharge peaks in spring for the 2051–2090 period compared to the control period 1961–2000 (Fig. 13). Because the snowmelt discharge peaks occur earlier, the recession flows in summer season decrease. The summer discharges decrease 20–50 % in all scenarios except in Nilakka and Loimijoki in the HIRHAM-B-scenario, which predicts greater increase in precipitation than the other scenarios. The decrease in mean summer discharges is caused by the increase of the annual evapotranspiration by 10–40 % and lake evaporation by 10–80 %.

In addition to earlier spring discharge peaks and decrease in summer discharges, all scenarios predict increase in winter discharges. The increase is more pronounced in the catchments of Loimijoki and Ounasjoki (40–150 %), which have lower lake percentage than Nilakka and Lentua, in which the winter discharges increase 10–70 %, depending on the used scenario.

The results show an increase in autumn mean discharges in Northern Finland, where the autumn runoff peaks – typical in Southern Finland at present – become more frequent. In the catchments with large lake percentages in Southern and Central Finland the autumn mean discharges decrease in all scenarios due to increase in evapotranspiration and lower soil moisture content in the beginning of autumn. In the southern catchments with low lake percentages the change in mean autumn discharges depends on the scenario. Different autumn precipitation changes between the scenarios are the main reason for different changes in autumn discharges, but also the soil moisture content after summer has an influence and varies depending on temperature and precipitation changes during summer.

Impacts of climate change on temperature, precipitation and hydrology in Finland

T. Olsson et al.

[Title Page](#)

[Abstract](#)

[Introduction](#)

[Conclusions](#)

[References](#)

[Tables](#)

[Figures](#)

[⏪](#)

[⏩](#)

[◀](#)

[▶](#)

[Back](#)

[Close](#)

[Full Screen / Esc](#)

[Printer-friendly Version](#)

[Interactive Discussion](#)



4 Discussion

All five climate scenarios used in this study contain systematic biases and hydrological simulations with the uncorrected RCM data for the four study catchments therefore differ significantly from observations. Bias correction is necessary since RCM biases not only affect the absolute discharges, but can also influence the relative changes (Leander et al., 2008). As shown in the previous section the projected seasonal changes of the mean discharges in Finland are especially sensitive to RCM biases, because both the temperature and precipitation biases significantly influence the mean discharges.

Several studies comparing different bias correction methods have concluded that generally it is not possible to establish one single method, which would outperform others in all circumstances, but some methods outperform other methods more frequently (Teutschbein and Seibert, 2012; Räisänen and Rätty, 2013). Teutschbein and Seibert (2012) validated five different bias correction methods with 11 RCMs and found DBS to perform best for temperature and precipitation. Räisänen and Rätty (2013) found combination of two quantile-quantile mapping (QM) methods to outperform each individual method when adjusting daily temperature from six RCMs. The disadvantage of the QM method is the need to extrapolate data in both ends of the QM function (e.g. Veijalainen et al., 2012; Räisänen and Rätty, 2013). With DBS used in this study no extrapolation is needed because continuous distribution functions are used to adjust temperature and precipitation and DBS is thus considered to be more sophisticated method.

Although bias correction methods usually improve the RCM simulations substantially, other uncertainties still remain, especially for future simulations. Biases in RCMs, changing trends due to different correction procedures, and non-stationarity of climate conditions have been investigated e.g. by Teutschbein and Seibert (2013) and Maraun (2012, 2013). One disadvantage of bias correction is that the physical cause of precipitation and temperature bias is not taken into account. For instance a few degrees bias in temperature in winter affects the form of precipitation and snowmelt, which have significant impact on snow accumulation in hydrological models. A recent study by Räisänen

Impacts of climate change on temperature, precipitation and hydrology in Finland

T. Olsson et al.

[Title Page](#)

[Abstract](#)

[Introduction](#)

[Conclusions](#)

[References](#)

[Tables](#)

[Figures](#)

[⏪](#)

[⏩](#)

[◀](#)

[▶](#)

[Back](#)

[Close](#)

[Full Screen / Esc](#)

[Printer-friendly Version](#)

[Interactive Discussion](#)



Impacts of climate change on temperature, precipitation and hydrology in Finland

T. Olsson et al.

[Title Page](#)

[Abstract](#)

[Introduction](#)

[Conclusions](#)

[References](#)

[Tables](#)

[Figures](#)

[⏪](#)

[⏩](#)

[◀](#)

[▶](#)

[Back](#)

[Close](#)

[Full Screen / Esc](#)

[Printer-friendly Version](#)

[Interactive Discussion](#)



et al. (2014) found that during the snow melt period in ECHAM5 model the air temperature rarely rises above zero as long as there is snow in the ground, leading to too low temperatures during the snow melt period. This study shows that even after the DBS adjustment the biases in the near zero temperatures remain. Especially with the RCA and REMO, which were driven by boundary conditions from ECHAM5, these biases influence the magnitude of winter and spring runoff and floods in the hydrological model simulations. Maraun (2013) stated that bias correction can even deteriorate future simulations and increase the future bias especially in areas where biased responses of surface albedo, soil moisture or cloud cover affected RCM simulations. According to Maraun (2013), biases are however relatively stable and bias correction on average considerably improves climate scenarios.

Another source of uncertainties with bias correction methods is the stationarity assumption of model biases, which means that the RCM biases do not change in time and the same correction algorithm is assumed to be valid also for future conditions. However, Teutschbein and Seibert (2013) found DBS to perform relatively well even in changing climate conditions. They separated the coldest and warmest years as well as driest and wettest years to evaluate the performance of six different bias correction procedures under systematically varying climate conditions. They found DBS to perform best of the studied bias correction methods under changing conditions and questioned the use of simple bias correction methods such as delta-change and linear scaling. Without the possibility to validate future scenarios against observed values the best policy, according to Teutschbein and Seibert (2012), is to use an ensemble of RCMs with the best available bias correction method.

The current study shows that the effect of DBS adjustment on temperature and precipitation trends is in generally small. But with a large bias in SD of the uncorrected temperature data the DBS may cause significant change in temperature trends increasing the uncertainty for the climate change projections. Also since the precipitation and temperature corrections are not interdependent, in some cases the bias in the snow accumulation remains considerably large, which leaves biases in spring discharges

Impacts of climate change on temperature, precipitation and hydrology in Finland

T. Olsson et al.

[Title Page](#)

[Abstract](#)

[Introduction](#)

[Conclusions](#)

[References](#)

[Tables](#)

[Figures](#)

[⏪](#)

[⏩](#)

[◀](#)

[▶](#)

[Back](#)

[Close](#)

[Full Screen / Esc](#)

[Printer-friendly Version](#)

[Interactive Discussion](#)

during the control period and certainly affects the relative changes in the future. Räisänen and Rätty (2013) and Rätty et al. (2014) concluded that since no single BC method outperforms others in all circumstances, the use of few different but well-performing correction methods would give more realistic range of uncertainty. In the hydrological studies the assessment of the performance should be based on the remaining biases in discharges during the control period to avoid unnecessary large uncertainty range and false conclusions about the impacts of climate change.

The DBS adjustment used in this study principally follows the method introduced by Yang et al. (2010). The method was tested using two versions of both temperature and precipitation corrections. The results show that the temperature correction in Finland works better without classification into wet and dry days. The classification is not straightforward and depends on season and area of investigation. A threshold value of observed precipitation, used to classify days to dry and wet, varies from 0 mm day^{-1} (Teutschbein and Seibert, 2012) to as high as 1 mm day^{-1} (Rätty et al., 2014). In Finland RCMs produced too few days with 0 mm day^{-1} and thus a threshold value to cut off the spurious drizzle is needed. Nevertheless, a high threshold would cut too many precipitation days from both observations and RCMs and thus influence the precipitation and temperature distributions. On the other hand, when using a low threshold, e.g. 0.1 mm day^{-1} , only 20–30 % of days in autumn and winter in Finland are considered to be dry. For precipitation distribution the removal of drizzle days is important, but for temperature it is questionable whether the simulated temperature for drizzle days represents the temperature for dry days. Separation of days according to wet/dry state reduces the amount of days available for the temperature distribution on wet/dry days, which can cause biases in CDFs especially in the lower and upper tails of the distribution. Due to the tendency of wet/dry separation to produce too low minima and too high maxima the DBS approach without wet/dry separation produces better fit with observed values in most cases in Finland.

The DBS method with wet/dry separation roughly takes into account the correlation between temperature and precipitation, but precipitation is still adjusted without knowl-

Impacts of climate change on temperature, precipitation and hydrology in Finland

T. Olsson et al.

[Title Page](#)

[Abstract](#)

[Introduction](#)

[Conclusions](#)

[References](#)

[Tables](#)

[Figures](#)

[⏪](#)

[⏩](#)

[◀](#)

[▶](#)

[Back](#)

[Close](#)

[Full Screen / Esc](#)

[Printer-friendly Version](#)

[Interactive Discussion](#)

edge of temperature. It would not be rational to divide precipitation events according to near surface temperature since it does not determine the precipitation phase, but instead temperature at 850 hPa could be used. Also separation according to weather types could take stratiform and torrential precipitation events better into account. The problem with these methods is the lack of comprehensive observational data and thus some reanalysis or other climate models should be used as observational data in the adjustment.

Two distributions, single and double gamma, were used for precipitation corrections. Intuitively the double gamma distribution would produce better fit with observed precipitation, compared to single gamma, due to better performance with torrential precipitations. However, depending on season and area of investigation single gamma distribution fitted observed values and RCM simulations better than double gamma distribution. In these cases the area of investigation had not experienced many torrential precipitation events and large part of the distribution consisted of drizzle days. Although double gamma usually reproduces torrential precipitation events better than single gamma, the cut off value of 95 % does not always produce the best results. At least for colder regions like Finland where torrential precipitation events are relatively rare the cut off value could be even higher (e.g. 98 %) to get better gamma fit also for the torrential values. After applying the 95 % cut off value, the torrential 5 % means roughly precipitation values higher than 10 mm day^{-1} although by definition 20 mm day^{-1} is the threshold for torrential precipitation in Finland. In addition, the highest 5 % of precipitation distribution does not in most cases produce real gamma function and thus the gamma fit might not be valid. One problem with double gamma distribution occurred near (below and above) the torrential cut-off value because it caused discontinuity in the distribution and thus cumulated too much precipitation around this point. In Finland this means an increase in near 10 mm day^{-1} precipitation amounts compared to observed values.

Precipitation varies considerably on spatial and temporal scales and thus to use either single or double gamma distribution alone is a somewhat stiff procedure. The

Impacts of climate change on temperature, precipitation and hydrology in Finland

T. Olsson et al.

[Title Page](#)

[Abstract](#)

[Introduction](#)

[Conclusions](#)

[References](#)

[Tables](#)

[Figures](#)

[⏪](#)

[⏩](#)

[◀](#)

[▶](#)

[Back](#)

[Close](#)

[Full Screen / Esc](#)

[Printer-friendly Version](#)

[Interactive Discussion](#)

importance of the torrential precipitations is more pronounced in the impact studies of flash floods and floods in small river catchments, which respond quickly to extreme precipitation. In the larger watersheds, the high discharges usually correlates better with 5 to 15 days extreme precipitation sums than torrential values due to the delay caused by soil moisture deficit, river transport, lake storage and wetlands inside the catchment. Thus the tendency of double gamma correction to increase the near 10 mm day^{-1} precipitations may deteriorate the DBS ability to reproduce the observed extreme discharges compared to single gamma distribution. A trade-off tool to see whether single or double gamma distribution fits better could be developed, but problems would occur when either observed or RCM simulated precipitation would not produce the same selection of gamma distribution.

Previously the most commonly used method to estimate climate change impacts on hydrology was the delta change method (e.g. Andréasson et al., 2004; Steele-Dunne et al., 2008; Veijalainen et al., 2010). Often a very simple version of this method, where only the monthly mean changes of temperature and precipitation from climate model simulations were used to modify the observed temperature and precipitation records, was used (Hay et al., 2000). Compared to delta change methods the BC methods better preserve the variability in temperature and precipitation produced by the RCMs (Lenderink et al., 2007; Graham et al., 2007; Beldring et al., 2008; Yang et al., 2010). Veijalainen (2012) showed that with delta change and with QM method the changes in discharges for four catchments in Finland were similar for annual means. However, larger differences were found in flood estimates and in seasonal values. Especially during spring in northern Finland the delta change method produced earlier snowmelt than the bias corrected RCM data. The changes in annual and seasonal discharges as well as in timing of the spring discharge peaks with DBS adjusted RCM data of this study are in good agreement with results of QM method used by Veijalainen et al. (2012). The result supports the idea to use both methods in future studies to better cover the uncertainty range caused by bias correction. On the other hand the extrapolation of the data in QM method may increase the uncertainty of the climate projections.

Impacts of climate change on temperature, precipitation and hydrology in Finland

T. Olsson et al.

Title Page

Abstract

Introduction

Conclusions

References

Tables

Figures

◀

▶

◀

▶

Back

Close

Full Screen / Esc

Printer-friendly Version

Interactive Discussion

The uncertainties in estimation of climate change impacts on hydrology remain large, since the process of estimation is complicated and each step contains uncertainties. The results show large differences between the five climate scenarios used in this study and climate scenarios have been shown to be a major source of the uncertainties in the climate change assessments (Steele-Dunne et al., 2008; Prudhomme and Davies, 2009). The hydrological model and its sub-models also cause uncertainties in the results. Hydrological model structure and parameter uncertainties are not considered, but other studies indicate that these can be substantial, although not among the largest sources of uncertainty (Steele-Dunne et al., 2008; Prudhomme and Davies, 2009). Within the WSFS hydrological model, the snow model and evapotranspiration model are the most important sub-models influencing the results, and the evaluation of different versions of these sub-models would be required for the proper estimation of the hydrological model and overall estimation of the uncertainties.

5 Conclusions

The use of bias corrected RCM data as input to impact models is becoming a common practice. The choice of bias correction method significantly affects estimation of climate change impacts on hydrology. The DBS algorithm has been shown to perform well under changing conditions and outperform other methods in many cases (Teutschbein and Seibert, 2012; Rätty et al., 2014) and was therefore selected for this study. Two different DBS methods for temperature (with and without dry/wet day separation) and two for precipitation (single and double gamma distribution) were compared. This paper focuses on mean values of temperature, precipitation and discharges simulated with hydrological model of WSFS in four catchments. The DBS adjustment significantly improves RCM data and simulated discharges compared to observations, but the magnitude of the biases of the uncorrected RCM data still influence the success of the DBS method.

Impacts of climate change on temperature, precipitation and hydrology in Finland

T. Olsson et al.

Both gamma distributions used in the DBS method for precipitation provide reasonable results for Finland, where precipitation extremes are moderate in all seasons. Double gamma distribution reproduces monthly precipitation amounts and torrential values better than single gamma distribution, but the cut-off value in 95th percentile is too low in some cases and it could be better to determine specifically for northern climate conditions. For temperature, the small fraction of dry days during some seasons affects the DBS temperature adjustment with dry/wet separation, and thus for temperature the method without dry/wet separation performs better. With most scenarios the DBS method preserves temperature and precipitation trends projected by uncorrected RCMs data sufficiently well. However, in cases when the simulated seasonal cycle of precipitation in RCM is not correct, the DBS adjustment changes the trend more than for cases with correct seasonal cycle. Also, too narrow SD of uncorrected RCM data compared to observed deviation leads to increased temperature trends after DBS adjustment with two scenarios. The cold bias found in RCMs during snow melt can be reduced by DBS method, but the remaining biases are found to influence the timing of snow melt and the magnitude of winter and spring discharges in hydrological simulations.

The projected changes in annual mean discharges by 2051–2090 are moderate, but seasonal distribution of discharges will change significantly. The most notable changes are increasing winter discharges, decreased and earlier spring discharge peaks and decreasing summer discharges due to longer and warmer summer and increased evapotranspiration. The autumn discharges are projected to increase in Northern Finland and decrease in the catchments with high lake percentage in Southern Finland. The different RCMs produce a wide range of variability on magnitude of the changes. Contrary to the other scenarios used in this study, the HIRHAM-B scenario produces an increase in summer discharges due to greater precipitation increase. Also the effect of different scenarios on mean autumn discharge in the fast responding southern catchments is scenario dependent.

[Title Page](#)[Abstract](#)[Introduction](#)[Conclusions](#)[References](#)[Tables](#)[Figures](#)[◀](#)[▶](#)[◀](#)[▶](#)[Back](#)[Close](#)[Full Screen / Esc](#)[Printer-friendly Version](#)[Interactive Discussion](#)

HESSD

12, 2657–2706, 2015

Impacts of climate change on temperature, precipitation and hydrology in Finland

T. Olsson et al.

[Title Page](#)[Abstract](#)[Introduction](#)[Conclusions](#)[References](#)[Tables](#)[Figures](#)[◀](#)[▶](#)[◀](#)[▶](#)[Back](#)[Close](#)[Full Screen / Esc](#)[Printer-friendly Version](#)[Interactive Discussion](#)

For relative changes in future discharges the bias correction affects mainly the seasonal results. The differences between changes in seasonal discharges with corrected and uncorrected RCM data are significant especially in the scenarios with large temperature biases. The correct seasonal changes are important when any detailed analysis of adaptation strategies for example in lake regulation rules or flood risk analysis, are considered. Especially the extremes – floods and droughts – are sensitive to both temperature and precipitation biases and without bias correction even the results of relative changes in floods can be misleading. The impact of the bias correction on precipitation extremes and on simulated extreme discharges will be examined in the next phase of this study and published in a separate paper.

Since the choice of the bias correction method influences the results and the best method cannot usually be assessed, an ensemble of bias correction methods to incorporate this uncertainty to the other sources of uncertainty such as choice of emission scenario, climate or hydrological model could be used in the future. However, the evaluation of sufficiently well performing bias correction methods is required to avoid unrealistic results in the climate change impact assessments. The remaining biases in temperature and precipitation data, independent adjustments for meteorological variables or changing temperature and precipitation trends in some climate scenarios after the DBS adjustment cause additional uncertainty in the hydrological simulations and these should be considered when the results are interpreted.

Acknowledgements. This study was carried out within the project Climate Change and Water Cycle: Effect to Water Resources and their Utilization in Finland (ClimWater) (no. 140930) financed by the Finnish Academy as part of the Research Programme for climate change FICCA. The ENSEMBLES data used in this work was funded by the EU FP6 Integrated Project ENSEMBLES (Contract number 505539) whose support is gratefully acknowledged.

References

- Andréasson, J., Bergström, S., Carlsson, B., Graham, L., and Lindström, G.: Hydrological change – climate change impact simulations for Sweden, *Ambio*, 33, 228–234, 2004.
- Beldring, S., Engen-Skaugen, T., Førland, E., and Roald, L.: Climate change impacts on hydrological processes in Norway based on two methods for transferring RCM results to meteorological station sites, *Tellus A*, 60, 439–450, 2008.
- Bergström, S.: Development and application of a conceptual runoff model for Scandinavian catchments, Report RHO No. 7, SMHI, Norrköping, 134 pp., 1976.
- Castro, M., Gallardo, C., Jylhä, K., and Tuomenvirta, H.: The use of a climate-type classification for assessing climate change effects in Europe from an Ensemble of nine regional climate models, *Climatic Change*, 81, 329–341, doi:10.1007/s10584-006-9224-1, 2007.
- Chen, J., Brisette, F. P., and Leconte, R.: Uncertainty of downscaling method in quantifying the impact of climate change on hydrology, *J. Hydrol.*, 401, 190–202, 2011.
- Christensen, J. H., Boberg, F., Christensen, O. B., and Lucas-Picher, P.: On the need for bias correction of regional climate change projections of temperature and precipitation, *Geophys. Res. Lett.*, 35, L20709, doi:10.1029/2008GL035694, 2008.
- Førland, E. J., Allerup, P., Dahlström, B., Elomaa, E., Jónsson, T., Madsen, H., Perälä, J., Risänen, P., Vedin, H., and Vejen, F.: Manual for Operational Correction of Nordic Precipitation Data, Report 24/96 KLIMA, Norwegian Meteorol. Inst., Oslo, 66 pp., 1996.
- Graham, L. P., Andréasson, J., and Carlsson, B.: Assessing climate change impacts on hydrology from an ensemble of regional climate models, model scales and linking methods – a case study on the Lule River Basin, *Climatic Change*, 81, 293–307, 2007.
- Hay, L. E., Wilby, R. L., and Leavesley, G. H.: A comparison of delta change and downscaled GCM scenarios for three mountainous basins in the United States, *JAWRA Journal of American Water Resources Association*, 36, 387–397, 2000.
- Hewitson, B. C. and Crane, R. G.: Climate downscaling: techniques and application, *Clim. Res.*, 7, 85–95, 1996.
- Huttunen, I., Huttunen, M., Piirainen, V., Korppoo, M., Lepistö, A., Räike, A., Tattari, S., and Vehviläinen, B.: A national scale nutrient loading model for Finnish watersheds – VEMALA, *Environ. Model. Assess.*, submitted, 2014.

Impacts of climate change on temperature, precipitation and hydrology in Finland

T. Olsson et al.

[Title Page](#)

[Abstract](#)

[Introduction](#)

[Conclusions](#)

[References](#)

[Tables](#)

[Figures](#)

[◀](#)

[▶](#)

[◀](#)

[▶](#)

[Back](#)

[Close](#)

[Full Screen / Esc](#)

[Printer-friendly Version](#)

[Interactive Discussion](#)



Impacts of climate change on temperature, precipitation and hydrology in Finland

T. Olsson et al.

[Title Page](#)

[Abstract](#)

[Introduction](#)

[Conclusions](#)

[References](#)

[Tables](#)

[Figures](#)

[⏪](#)

[⏩](#)

[◀](#)

[▶](#)

[Back](#)

[Close](#)

[Full Screen / Esc](#)

[Printer-friendly Version](#)

[Interactive Discussion](#)

Hyvärinen, V., Solantie, R., Aitamurto, S., and Drebs, A.: Suomen vesitase 1961–1990 valuma-alueittain, Vesi- ja ympäristöhallitus, Helsinki, Vesi- ja ympäristöhallinnon julkaisuja – sarja A 220, 1995.

Jakkila, J., Vento, T., Rousi, T., and Vehviläinen, B.: SMOS soil moisture data validation in the Aurajoki watershed, Finland, *Hydrol. Res.*, 45, 684–702, doi:10.2166/nh.2013.234, 2014.

Jylhä, K., Tuomenvirta, H., Ruosteenoja, K., Niemi-Hugaerts, H., Keisu, K., and Karhu, J. A.: Observed and projected future shifts of climate zones in Europe and their use to visualize climate change information, *Weather, Climate and Society*, 2, 148–167, doi:10.1175/2010WCAS1010.1, 2009a.

Jylhä, K., Ruosteenoja, K., Räisänen, J., Venäläinen, A., Ruokolainen, L., Saku, S., and Seitola, T.: Arvioita Suomen muuttuvasta ilmastosta sopeutumistutkimuksia varten, ACCLIM-hankkeen raportti 2009, Ilmatieteen laitos, Helsinki, Raportteja 2009:4, 2009b.

Leander, R., Buishand, T. A., van den Hurk, B. J. J.M, and de Wit. M. J. M.: Estimation of changes in flood quintiles of the river Meuse from resampling of regional climate model output, *J. Hydrol.*, 351, 331–343, 2008.

Lenderink, G., Buishand, A., and van Deursen, W.: Estimates of future discharges of the river Rhine using two scenario methodologies: direct versus delta approach, *Hydrol. Earth Syst. Sci.*, 11, 1145–1159, doi:10.5194/hess-11-1145-2007, 2007.

Maraun, D.: Nonstationarities of regional climate model biases in European seasonal temperature and precipitation sums, *Geophys. Res. Lett.*, 39, L06706, doi:10.1029/2012GL051210, 2012.

Maraun, D.: Bias correction, quantile mapping, and downscaling: revisiting the inflation issue, *J. Climate*, 26, 2137–2143, doi:10.1175/JCLI-D-12-00821.1, 2013.

Nash, J. E. and Sutcliffe, J. V.: River forecasting through conceptual models 1: a discussion of principles, *J. Hydrol.*, 10, 282–290, 1970.

Perälä, J. and Reuna, M.: Lumen vesiarvon alueellinen ja ajallinen vaihtelu Suomessa, Vesi- ja ympäristöhallitus, Helsinki, Vesi- ja Ympäristöhallinnon julkaisuja – sarja A 56, 1990.

Prudhomme, C. and Davies, H.: Assessing uncertainties in climate change impact analyses on the river flow regimes in the UK. Part 2: Future climate, *Climatic Change*, 93, 197–222, 2009.

Rauscher, S. A., Coppola, E., Piani, C., and Giorgi, F.: Resolution effects on regional climate model simulations of seasonal precipitation over Europe, *Clim. Dynam.*, 35, 685–711, doi:10.1007/s00382-009-0607-7, 2010.

Impacts of climate change on temperature, precipitation and hydrology in Finland

T. Olsson et al.

[Title Page](#)

[Abstract](#)

[Introduction](#)

[Conclusions](#)

[References](#)

[Tables](#)

[Figures](#)

[◀](#)

[▶](#)

[◀](#)

[▶](#)

[Back](#)

[Close](#)

[Full Screen / Esc](#)

[Printer-friendly Version](#)

[Interactive Discussion](#)

- Resio, D. T. and Vincent, C. L.: Estimation of winds over the great lakes, *J. Waterw. Port C. Div.*, 103, 265–283, 1977.
- Ruosteenoja, K., Räisänen, J., and Pirinen, P.: Projected changes in thermal seasons and the growing season in Finland, *Int. J. Climatol.*, 31, 1473–1487, doi:10.1002/joc.2171, 2011.
- 5 Räisänen, J. and Rätty, O.: Projections of daily mean temperature variability in the future: cross-validation tests with ENSEMBLES regional climate simulations, *Clim. Dynam.*, 41, 1553–1568, doi:10.1007/s00382-012-1515-9, 2013.
- Räisänen, P., Luomaranta, A., Järvinen, H., Takala, M., Jylhä, K., Bulygina, O. N., Luojus, K., Riihelä, A., Laaksonen, A., Koskinen, J., and Pulliainen, J.: Evaluation of North Eurasian snow-off dates in the ECHAM5.4 atmospheric general circulation model, *Geosci. Model Dev.*, 7, 3037–3057, doi:10.5194/gmd-7-3037-2014, 2014.
- 10 Rätty, O., Räisänen, J., and Ylhäisi, J.: Evaluation of delta change and bias correction methods for future daily precipitation: intermodel cross-validation using ENSEMBLES simulations, *Clim. Dynam.*, 42, 2287–2303, 2014.
- 15 Steele-Dunne, S., Lynch, P., McGrath, R., Semmler, T., Wang, S., Hanfin, J., and Nolan, P.: The impacts of climate change on hydrology in Ireland, *J. Hydrol.*, 356, 28–45, 2008.
- Taskinen, A.: Operational correction of daily precipitation measurements in Finland, *Boreal Environ. Res.*, in review, 2014.
- Teutschbein, C. and Seibert, J.: Bias correction of regional climate model simulations for hydrological climate-change impact studies: review and evaluation of different methods, *J. Hydrol.*, 456–457, 12–29, 2012.
- 20 Teutschbein, C. and Seibert, J.: Is bias correction of regional climate model (RCM) simulations possible for non-stationary conditions?, *Hydrol. Earth Syst. Sci.*, 17, 5061–5077, doi:10.5194/hess-17-5061-2013, 2013.
- 25 van der Linden, P. and Mitchell, J. F. B. (Eds.): ENSEMBLES: Climate Change and its Impacts: Summary of Research and Results from the ENSEMBLES Project, Met Office Hadley Centre, Exeter EX1 3PB, UK, 160 pp., 2009.
- van Pelt, S. C., Kabat, P., ter Maat, H. W., van den Hurk, B. J. J. M., and Weerts, A. H.: Discharge simulations performed with a hydrological model using bias corrected regional climate model input, *Hydrol. Earth Syst. Sci.*, 13, 2387–2397, doi:10.5194/hess-13-2387-2009, 2009.
- 30 Vehviläinen, B.: Snow Cover Models in Operational Watershed Forecasting, Publications of Water and Environment Research Institute, 11, National Board of Waters and the Environment, Helsinki, 1992.

HESSD

12, 2657–2706, 2015

Impacts of climate change on temperature, precipitation and hydrology in Finland

T. Olsson et al.

[Title Page](#)[Abstract](#)[Introduction](#)[Conclusions](#)[References](#)[Tables](#)[Figures](#)[⏪](#)[⏩](#)[◀](#)[▶](#)[Back](#)[Close](#)[Full Screen / Esc](#)[Printer-friendly Version](#)[Interactive Discussion](#)

Vehviläinen, B. and Huttunen, M.: Climate change and Water Resources in Finland, *Boreal Environ. Res.*, 2, 3–18, 1997.

Vehviläinen, B., Huttunen, M., and Huttunen, I.: Hydrological forecasting and real time monitoring in Finland: the watershed simulation and forecasting system (WSFS), in: *Innovation, Advances and Implementation of Flood Forecasting Technology*, Conference Papers, Tromsø, Norway, 17–19 October 2005, 2005.

Veijalainen, N.: Estimation of climate change impacts on hydrology and floods in Finland, PhD thesis, Aalto University, Espoo, Finland, *Doctoral dissertations 55/2012*, 211 pp., 2012.

Veijalainen, N., Lotsari, E., Alho, P., Vehviläinen, B., and Käyhkö, J.: National scale assessment of climate change impacts on flooding in Finland, *J. Hydrol.*, 391, 333–350, 2010.

Veijalainen, N., Korhonen, J., Vehviläinen, B., and Koivusalo, H.: Modelling and statistical analysis of catchment water balance and discharge in Finland in 1951–2099 using transient climate scenarios, *Journal of Water and Climate Change*, 3, 55–78, doi:10.2166/wcc.2012.012, 2012.

Wood, A. W., Leung, L. R., Shidhar, V., and Lettenmaier, D. P.: Hydrological implications of dynamical and statistical approaches to downscale climate model outputs, *Climatic Change*, 62, 189–216, 2004.

Yang, W., Andréasson, J., Graham, L. P., Olsson, J., Rosberg, J., and Wetterhall, F.: Distribution-based scaling to improve usability of regional climate model projections for hydrological climate change impacts studies, *Hydrol. Res.*, 41, 211–229, doi:10.2166/nh.2010.004, 2010.

Impacts of climate change on temperature, precipitation and hydrology in Finland

T. Olsson et al.

Title Page

Abstract

Introduction

Conclusions

References

Tables

Figures

◀

▶

◀

▶

Back

Close

Full Screen / Esc

Printer-friendly Version

Interactive Discussion

Table 1. Regional climate model (RCM) data used in this study.

| Name/Acronym | RCM | GCM | Emission scenario |
|--------------|----------|----------|-------------------|
| HIRHAM-A | HIRHAM5 | ARPEGE | A1B |
| HIRHAM-B | HIRHAM5 | BCM | A1B |
| REMO | REMO | ECHAM5 | A1B |
| RCA | RCA | ECHAM5 | A1B |
| HadRM | HadRM3Q0 | HadCM3Q0 | A1B |

Impacts of climate change on temperature, precipitation and hydrology in Finland

T. Olsson et al.

Table 2. Deviation between observed and RCM accumulated seasonal precipitation during control period (1961–2000) in uncorrected and DBS adjusted (single gamma = 1 gamma, double gamma = 2 gamma) precipitation in %. Values are shown for Loimijoki in Southern Finland and Ounasjoki in Northern Finland.

| | UNCORRECTED | 1 GAMMA | 2 GAMMA | UNCORRECTED | 1 GAMMA | 2 GAMMA |
|----------|-------------|---------|---------|-------------|---------|---------|
| Winter | Loimijoki | | | Ounasjoki | | |
| HIRHAM-A | 53.04 | 0.23 | -0.05 | 45.27 | -0.53 | -0.55 |
| REMO | 12.22 | 0.52 | 0.19 | 34.55 | 0.04 | -0.26 |
| RCA | 5.42 | 0.04 | -0.18 | 5.93 | -0.59 | -0.57 |
| HadRM | -0.62 | -0.76 | -0.46 | 12.37 | -1.49 | -0.88 |
| HIRHAM-B | 2.11 | -0.69 | -0.65 | -3.85 | -0.86 | -0.53 |
| Spring | | | | | | |
| HIRHAM-A | 77.04 | 0.73 | 0.39 | 80.50 | 1.58 | 0.74 |
| REMO | 29.71 | 1.04 | 0.59 | 54.51 | 1.58 | 0.73 |
| RCA | 30.91 | 0.47 | 0.26 | 23.75 | 0.44 | 0.16 |
| HadRM | 42.41 | 0.22 | 0.15 | 35.76 | -0.55 | -0.23 |
| HIRHAM-B | 40.80 | 0.93 | 0.57 | 39.34 | 1.31 | 0.64 |
| Summer | | | | | | |
| HIRHAM-A | -21.75 | -2.72 | -1.26 | 16.81 | -1.16 | -0.46 |
| REMO | 2.90 | -0.09 | 0.03 | 16.44 | 0.15 | 0.09 |
| RCA | 27.19 | 1.29 | 0.56 | 17.31 | 0.51 | 0.23 |
| HadRM | 1.27 | -0.15 | -0.03 | 26.88 | -0.67 | -0.20 |
| HIRHAM-B | -20.53 | -1.47 | -0.63 | -1.38 | -1.47 | -0.60 |
| Autumn | | | | | | |
| HIRHAM-A | 24.27 | -0.54 | 0.01 | 55.70 | 0.59 | 0.49 |
| REMO | 6.65 | 0.35 | 0.42 | 41.47 | 1.08 | 0.78 |
| RCA | 22.94 | 0.91 | 0.68 | 34.23 | 1.22 | 0.72 |
| HadRM | -10.56 | -0.61 | -0.12 | 18.65 | -0.53 | 0.06 |
| HIRHAM-B | 17.17 | 0.87 | 0.85 | 21.96 | 0.26 | 0.31 |

[Title Page](#)[Abstract](#)[Introduction](#)[Conclusions](#)[References](#)[Tables](#)[Figures](#)[◀](#)[▶](#)[◀](#)[▶](#)[Back](#)[Close](#)[Full Screen / Esc](#)[Printer-friendly Version](#)[Interactive Discussion](#)

Impacts of climate change on temperature, precipitation and hydrology in Finland

T. Olsson et al.

Table 4. Changes in uncorrected and DBS adjusted RCM seasonal precipitation sums in % and daily mean temperatures as °C between control (1961–2000) and scenario periods (2051–2090). Values are shown for winter and spring in Loimijoki catchment in Southern Finland.

| Winter | Precipitation % | | | Temperature °C | | |
|----------|-----------------|---------|---------|----------------|--------------|----------|
| | UNCORRECTED | 1 GAMMA | 2 GAMMA | UNCORRECTED | W/D Gaussian | Gaussian |
| HIRHAM-A | 11.0 | 12.3 | 11.2 | 2.9 | 3.0 | 2.7 |
| REMO | 12.7 | 15.7 | 13.9 | 3.4 | 5.1 | 4.5 |
| RCA | 19.0 | 21.0 | 19.7 | 3.6 | 4.7 | 4.2 |
| HadRM | 9.3 | 8.9 | 8.6 | 4.4 | 5.0 | 4.5 |
| HIRHAM-B | 23.6 | 25.4 | 26.2 | 4.9 | 4.3 | 3.8 |
| Spring | | | | | | |
| HIRHAM-A | −4.6 | −4.0 | −4.6 | 2.7 | 2.6 | 2.5 |
| REMO | 9.2 | 13.2 | 11.7 | 2.8 | 3.4 | 3.3 |
| RCA | 16.7 | 17.1 | 17.8 | 2.7 | 3.8 | 3.6 |
| HadRM | 6.7 | 7.3 | 6.1 | 4.5 | 4.3 | 4.1 |
| HIRHAM-B | 27.1 | 37.7 | 34.2 | 3.8 | 3.5 | 3.4 |
| Summer | | | | | | |
| HIRHAM-A | −6.8 | −7.5 | −6.7 | 2.1 | 2.4 | 2.4 |
| REMO | 13.7 | 14.0 | 13.6 | 2.3 | 2.9 | 2.7 |
| RCA | 11.4 | 13.9 | 13.3 | 2.0 | 3.3 | 3.2 |
| HadRM | 8.9 | 7.5 | 7.5 | 4.0 | 4.3 | 4.2 |
| HIRHAM-B | 17.0 | 16.4 | 15.9 | 1.4 | 1.4 | 1.5 |
| Autumn | | | | | | |
| HIRHAM-A | 1.0 | 0.4 | −0.5 | 1.4 | 1.4 | 1.4 |
| REMO | 11.2 | 11.8 | 10.4 | 2.8 | 3.9 | 3.6 |
| RCA | 11.7 | 13.4 | 11.9 | 2.8 | 3.8 | 3.5 |
| HadRM | 4.5 | 4.5 | 3.7 | 4.2 | 4.3 | 4.0 |
| HIRHAM-B | 6.4 | 7.3 | 7.0 | 3.0 | 2.7 | 2.5 |

[Title Page](#)
[Abstract](#)
[Introduction](#)
[Conclusions](#)
[References](#)
[Tables](#)
[Figures](#)
[⏪](#)
[⏩](#)
[◀](#)
[▶](#)
[Back](#)
[Close](#)
[Full Screen / Esc](#)
[Printer-friendly Version](#)
[Interactive Discussion](#)

Impacts of climate change on temperature, precipitation and hydrology in Finland

T. Olsson et al.

Table 5. Trends in seasonal precipitation sum (mm decade^{-1}) and temperature ($^{\circ}\text{C decade}^{-1}$) in uncorrected and DBS adjusted RCM simulations. Values are shown for spring in Loimijoki and Ounasjoki.

| Precipitation mm decade^{-1} | | | Temperature $^{\circ}\text{C decade}^{-1}$ | | |
|---------------------------------------|-----------|-----------|--|-----------|-----------|
| Spring | Loimijoki | Ounasjoki | Spring | Loimijoki | Ounasjoki |
| HIRHAM-A | -0.2 | 1.1 | HIRHAM-A | 0.3 | 0.5 |
| 1 gamma | 0.1 | 1.3 | w/d gaussian | 0.3 | 0.5 |
| 2 gamma | -0.1 | 1.3 | gaussian | 0.3 | 0.4 |
| REMO | 1.4 | -0.1 | REMO | 0.3 | 0.4 |
| 1 gamma | 1.6 | 0.1 | w/d gaussian | 0.4 | 0.5 |
| 2 gamma | 1.4 | 0.1 | gaussian | 0.4 | 0.5 |
| RCA | 2.3 | 1.5 | RCA | 0.3 | 0.3 |
| 1 gamma | 1.8 | 1.2 | w/d gaussian | 0.4 | 0.6 |
| 2 gamma | 1.9 | 1.2 | gaussian | 0.4 | 0.5 |
| HadRM | 1.1 | 4.9 | HadRM | 0.5 | 0.5 |
| 1 gamma | 0.8 | 3.3 | w/d gaussian | 0.5 | 0.6 |
| 2 gamma | 0.7 | 3.3 | gaussian | 0.5 | 0.5 |
| HIRHAM-B | 4.2 | 3.5 | HIRHAM-B | 0.4 | 0.4 |
| 1 gamma | 4.7 | 3.5 | w/d gaussian | 0.4 | 0.4 |
| 2 gamma | 4.4 | 3.5 | gaussian | 0.4 | 0.4 |

[Title Page](#)

[Abstract](#)

[Introduction](#)

[Conclusions](#)

[References](#)

[Tables](#)

[Figures](#)

[|◀](#)

[▶|](#)

[◀](#)

[▶](#)

[Back](#)

[Close](#)

[Full Screen / Esc](#)

[Printer-friendly Version](#)

[Interactive Discussion](#)

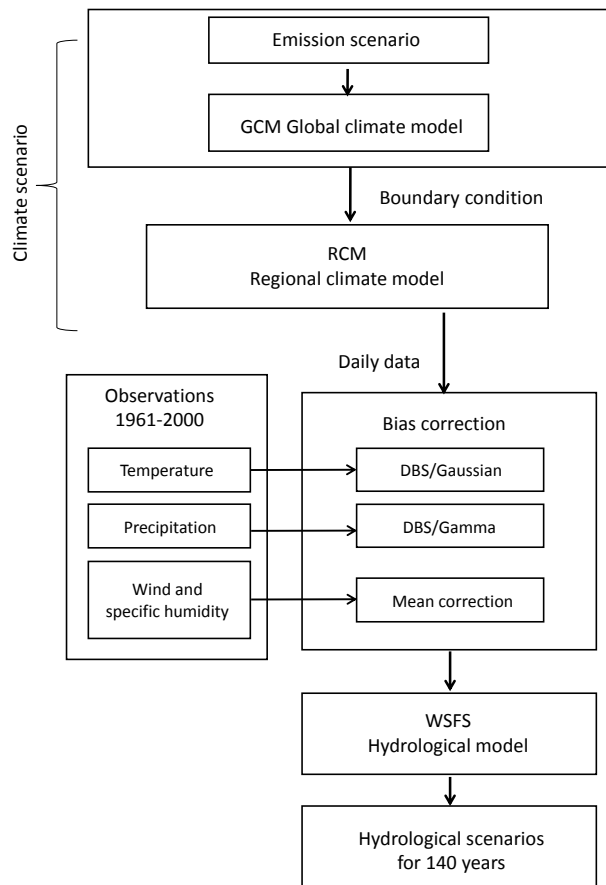


Figure 1. Schematic presentation of application procedure used in this study for hydrological modelling of climate change impact with bias corrected RCM data.

HESSD

12, 2657–2706, 2015

Impacts of climate change on temperature, precipitation and hydrology in Finland

T. Olsson et al.

[Title Page](#)

[Abstract](#)

[Introduction](#)

[Conclusions](#)

[References](#)

[Tables](#)

[Figures](#)

[◀](#)

[▶](#)

[◀](#)

[▶](#)

[Back](#)

[Close](#)

[Full Screen / Esc](#)

[Printer-friendly Version](#)

[Interactive Discussion](#)

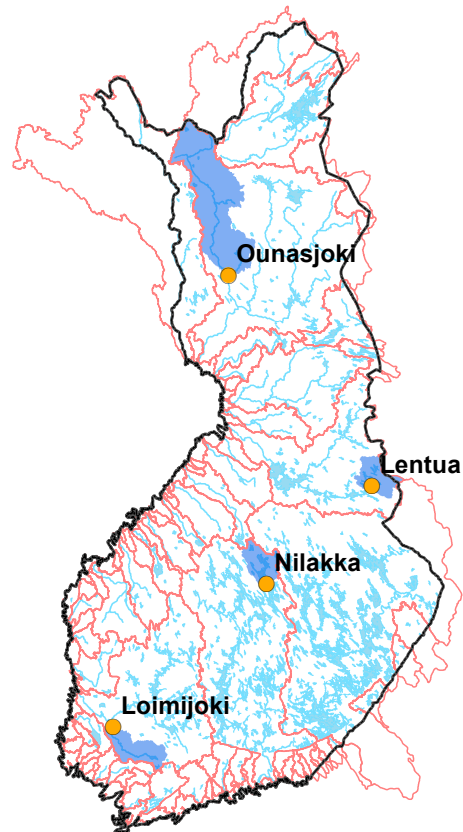


Figure 2. Map of the study catchments.

Impacts of climate change on temperature, precipitation and hydrology in Finland

T. Olsson et al.

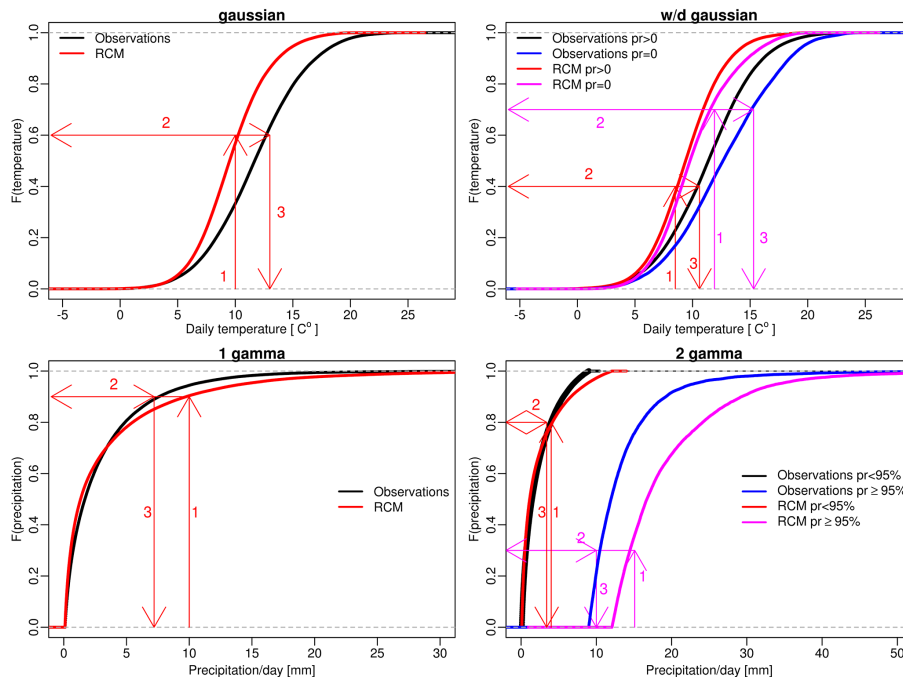


Figure 3. Procedure of the distribution based mapping. Upper panels for temperature adjustment and lower panels for precipitation (pr) adjustment. For temperature, Gaussian adjustment without wet/dry state separation (left) and with wet/dry separation (right) is shown. For precipitation, gamma adjustment with single gamma (left) and double gamma divided at 95th percentile (right) is shown. (1) Locate the cumulative probability value of RCM simulated daily temperature/precipitation. (2) Locate the observed temperature/precipitation value corresponding the same cumulative probability value as in (1). (3) This value is used as corrected value for RCM simulation.

[Title Page](#)
[Abstract](#)
[Introduction](#)
[Conclusions](#)
[References](#)
[Tables](#)
[Figures](#)
[⏪](#)
[⏩](#)
[◀](#)
[▶](#)
[Back](#)
[Close](#)
[Full Screen / Esc](#)
[Printer-friendly Version](#)
[Interactive Discussion](#)

Impacts of climate change on temperature, precipitation and hydrology in Finland

T. Olsson et al.

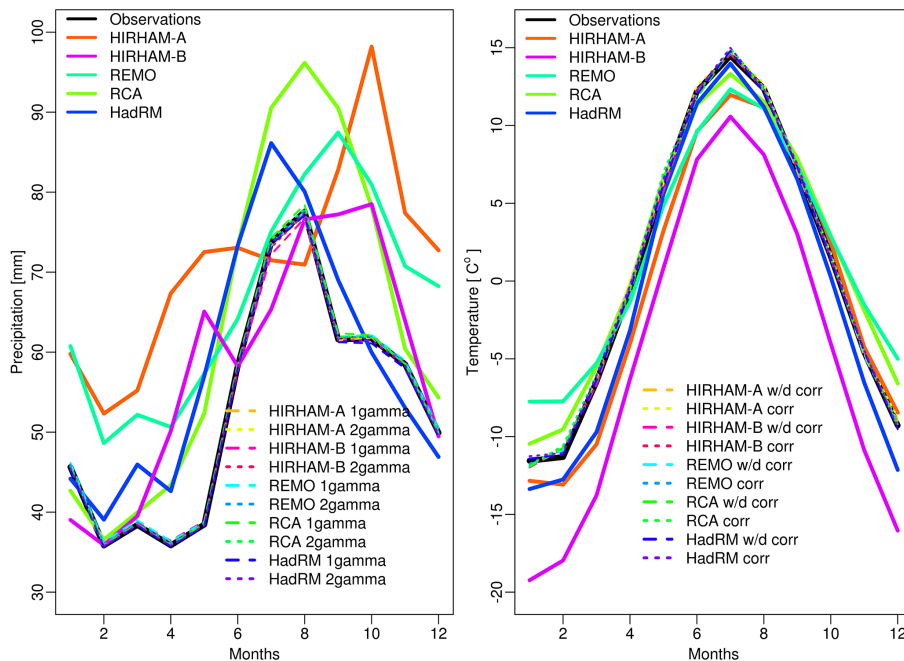


Figure 4. Monthly mean precipitation accumulation (left) and temperature (right) in observations and RCMs in Finland during the control period 1961–2000. Observations (black) and uncorrected RCMs (colours) in solid lines, adjusted RCMs in dashed and dotted lines. Monthly mean precipitation adjusted with single gamma (1gamma) are presented as dashed lines, and with double gamma (2gamma) as dotted lines (left panel). Monthly mean temperatures adjusted with wet/dry state separation (w/d corr) are presented as dashed lines and without wet/dry separation (corr) as dotted lines (right panel). All adjusted values follow closely the observations and no big differences can be seen between the two bias correction procedures.

[Title Page](#)
[Abstract](#)
[Introduction](#)
[Conclusions](#)
[References](#)
[Tables](#)
[Figures](#)
[⏪](#)
[⏩](#)
[◀](#)
[▶](#)
[Back](#)
[Close](#)
[Full Screen / Esc](#)
[Printer-friendly Version](#)
[Interactive Discussion](#)

Impacts of climate change on temperature, precipitation and hydrology in Finland

T. Olsson et al.

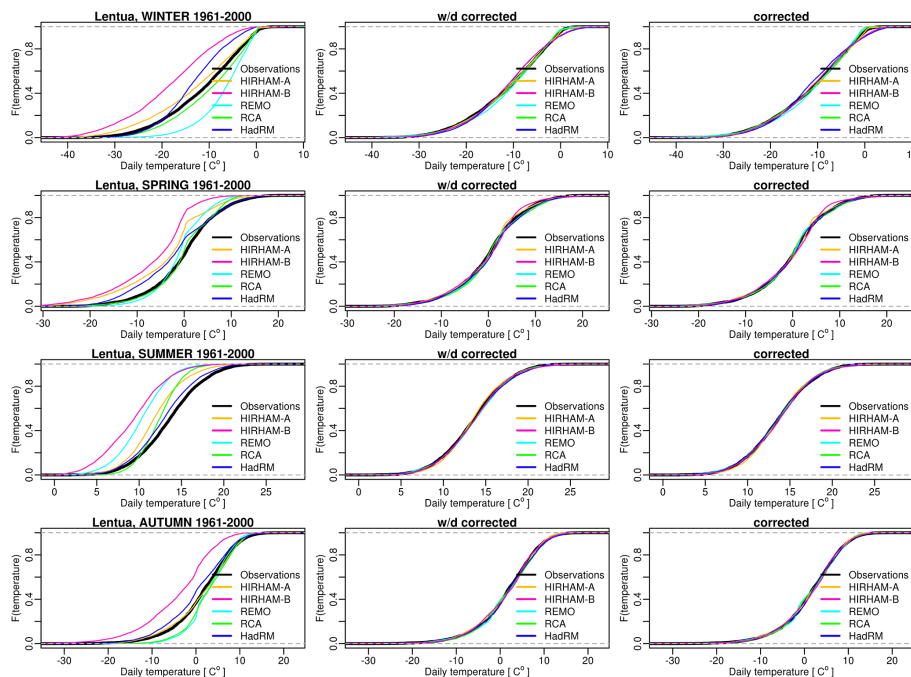


Figure 5. Cumulative distribution functions for daily temperature in Lentua catchment during control period (1961–2000). Observations and uncorrected RCM data in left column, daily RCM temperatures adjusted with wet/dry state separation (w/d corrected) are presented in middle column and without wet/dry separation (corrected) in right column. Winter is shown in first row, spring in second row, summer in third row and autumn in bottom row. All the adjusted values follow closely the observed distribution and no big differences can be seen between the two bias correction procedures.

[Title Page](#)
[Abstract](#)
[Introduction](#)
[Conclusions](#)
[References](#)
[Tables](#)
[Figures](#)
[⏪](#)
[⏩](#)
[◀](#)
[▶](#)
[Back](#)
[Close](#)
[Full Screen / Esc](#)
[Printer-friendly Version](#)
[Interactive Discussion](#)

Impacts of climate change on temperature, precipitation and hydrology in Finland

T. Olsson et al.

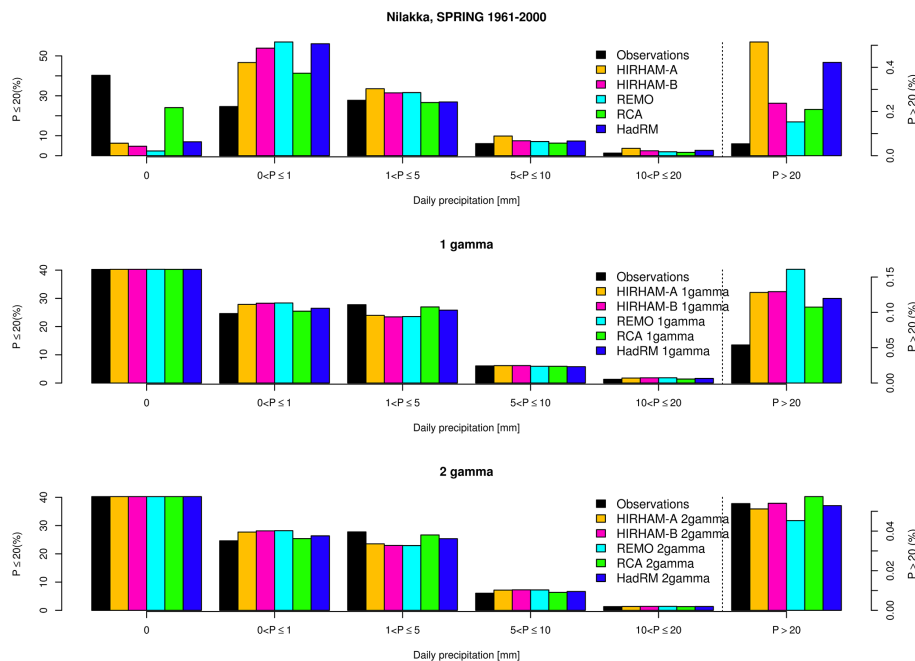


Figure 6. Distribution of daily precipitation amounts during control period (1961–2000) spring in Nilakka catchment in observations and uncorrected RCM data (top panel), single gamma adjusted RCM data (middle panel) and double gamma adjusted RCM data (bottom panel). Notice the uneven precipitation division and different scaling for precipitation amounts greater than 20 mm day⁻¹.

Impacts of climate change on temperature, precipitation and hydrology in Finland

T. Olsson et al.

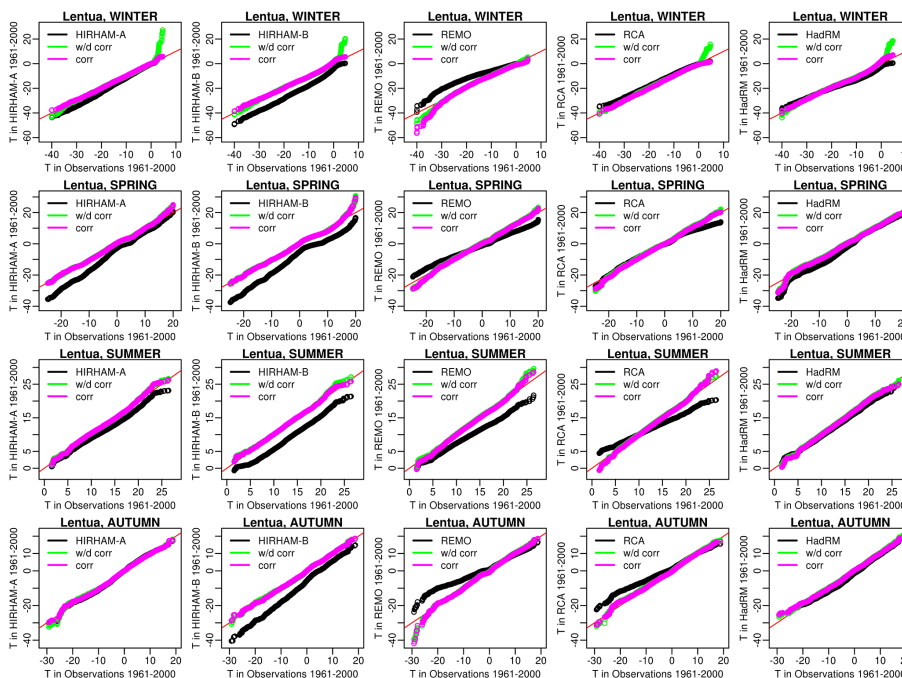


Figure 7. Comparison between uncorrected (black) and DBS adjusted (pink without wet/dry state separation and green with wet/dry state separation) daily temperatures during control period 1961–2000 in Lentua. Red line indicates observed abline.

[Title Page](#)

[Abstract](#) [Introduction](#)

[Conclusions](#) [References](#)

[Tables](#) [Figures](#)

[◀](#) [▶](#)

[◀](#) [▶](#)

[Back](#) [Close](#)

[Full Screen / Esc](#)

[Printer-friendly Version](#)

[Interactive Discussion](#)



Impacts of climate change on temperature, precipitation and hydrology in Finland

T. Olsson et al.

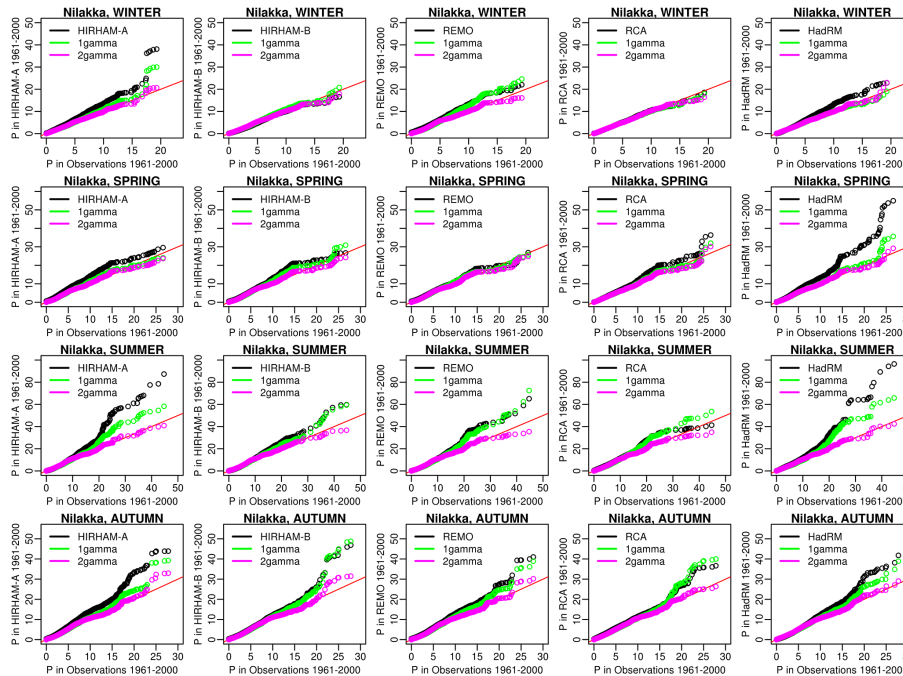


Figure 8. Comparison between uncorrected (black) and DBS adjusted daily precipitation (single gamma in green and double gamma in pink) during control period 1961–2000 in Nilakka. Red line indicates observed abline.

Title Page

Abstract Introduction

Conclusions References

Tables Figures

◀ ▶

◀ ▶

Back Close

Full Screen / Esc

Printer-friendly Version

Interactive Discussion

Impacts of climate change on temperature, precipitation and hydrology in Finland

T. Olsson et al.

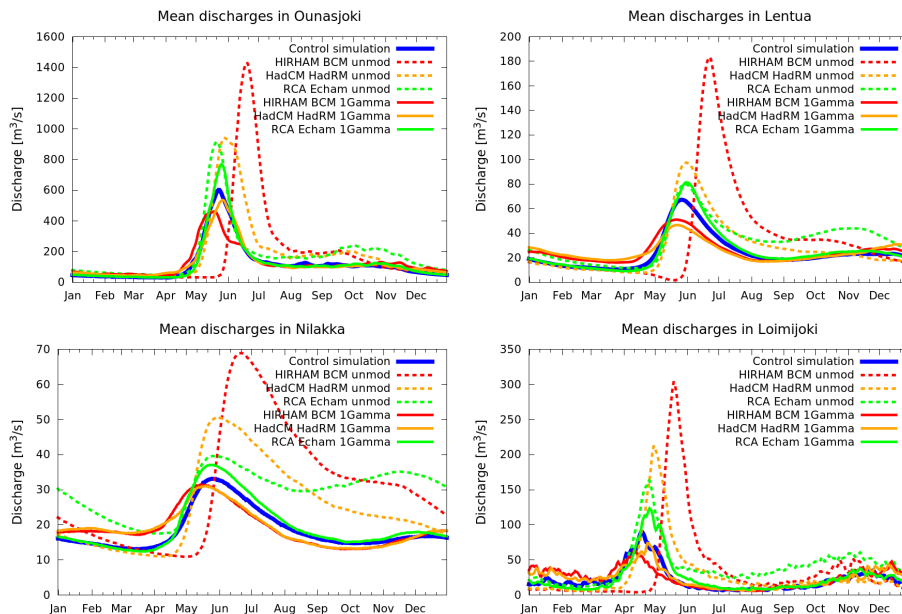


Figure 9. Hydrographs of simulated daily mean discharges in 1961–2000 with uncorrected RCM outputs (dashed lines) and corrected temperatures ($T = \text{corr}$) and precipitations ($P = \text{single gamma}$) (solid lines) compared to control simulation discharges (blue line).

[Title Page](#)
[Abstract](#)
[Introduction](#)
[Conclusions](#)
[References](#)
[Tables](#)
[Figures](#)
[⏪](#)
[⏩](#)
[◀](#)
[▶](#)
[Back](#)
[Close](#)
[Full Screen / Esc](#)
[Printer-friendly Version](#)
[Interactive Discussion](#)

Impacts of climate change on temperature, precipitation and hydrology in Finland

T. Olsson et al.

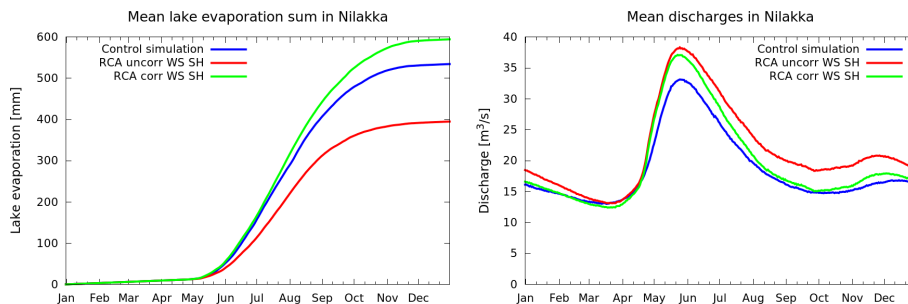


Figure 10. Model mean lake evaporation sums and simulated daily mean discharges of Lake Nilakka with RCA uncorrected WS and SH ($T = \text{corr}$, $P = 1$ gamma) in red, with corrected WS and SH ($T = \text{corr}$, $P = 1$ gamma) in green and control simulation in blue.

[Title Page](#)
[Abstract](#)
[Introduction](#)
[Conclusions](#)
[References](#)
[Tables](#)
[Figures](#)
[⏪](#)
[⏩](#)
[◀](#)
[▶](#)
[Back](#)
[Close](#)
[Full Screen / Esc](#)
[Printer-friendly Version](#)
[Interactive Discussion](#)

Impacts of climate change on temperature, precipitation and hydrology in Finland

T. Olsson et al.

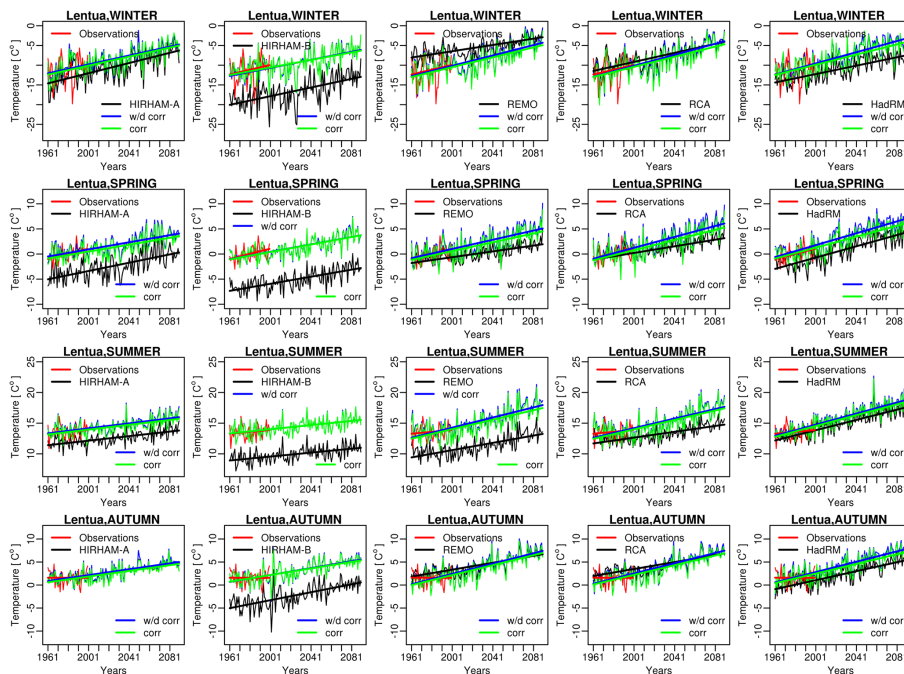


Figure 11. Seasonal trends in observed (red, 1961–2000) and RCM simulated daily temperatures in Lentua basin during 1961–2090. Uncorrected RCM daily temperatures in black, temperatures adjusted with wet/dry separation in blue and without wet/dry separation in green.

[Title Page](#)

[Abstract](#)

[Introduction](#)

[Conclusions](#)

[References](#)

[Tables](#)

[Figures](#)



[Back](#)

[Close](#)

[Full Screen / Esc](#)

[Printer-friendly Version](#)

[Interactive Discussion](#)

Impacts of climate change on temperature, precipitation and hydrology in Finland

T. Olsson et al.

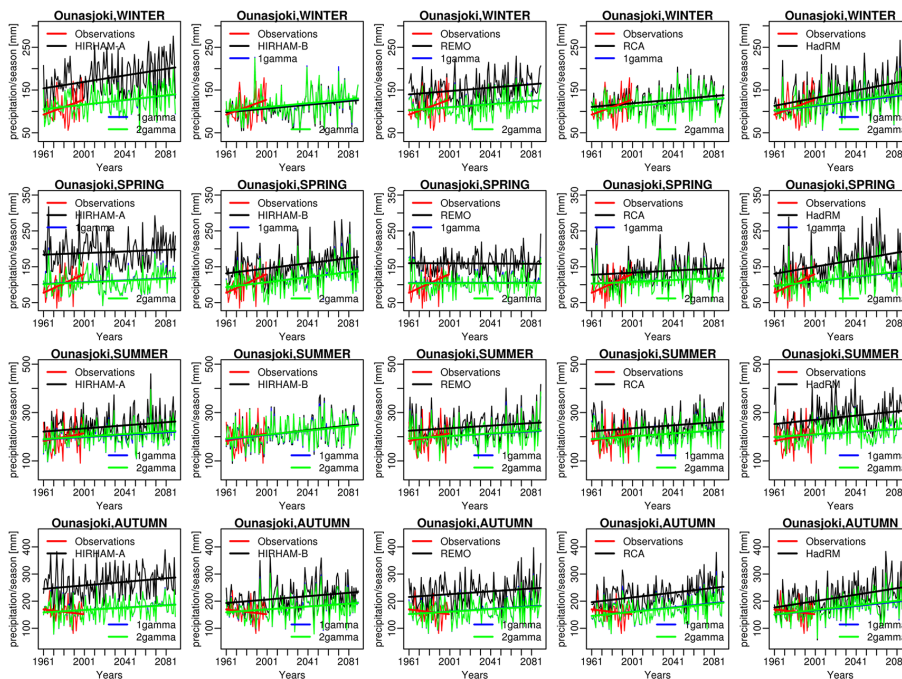


Figure 12. Seasonal trends in observed (red, 1961–2000) and RCM simulated seasonal precipitation accumulation in Ounasjoki catchment during 1961–2090. Uncorrected RCM precipitation in black, precipitation adjusted with single gamma in blue and with double gamma in green.

[Title Page](#)

[Abstract](#) [Introduction](#)

[Conclusions](#) [References](#)

[Tables](#) [Figures](#)

[◀](#) [▶](#)

[◀](#) [▶](#)

[Back](#) [Close](#)

[Full Screen / Esc](#)

[Printer-friendly Version](#)

[Interactive Discussion](#)



Impacts of climate change on temperature, precipitation and hydrology in Finland

T. Olsson et al.

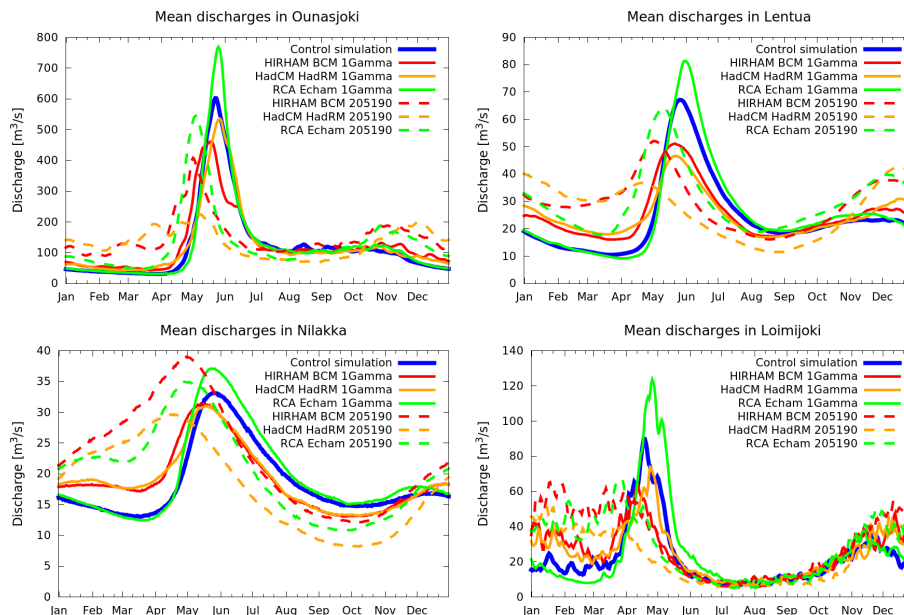


Figure 13. Hydrographs of simulated daily mean discharges with DBS adjusted temperatures ($T = \text{corr}$) and precipitations ($P = 1$ gamma) of RCMs in 1961–2000 (solid lines) and in 2051–2090 (dashed lines) compared to control simulation discharges (blue line).

Title Page

Abstract

Introduction

Conclusions

References

Tables

Figures

◀

▶

◀

▶

Back

Close

Full Screen / Esc

Printer-friendly Version

Interactive Discussion