

Comparing CFSR and conventional weather data for discharge and soil loss modelling with SWAT in small catchments in the Ethiopian Highlands

Vincent Roth^{1,2,3} and Tatenda Lemann^{1,2,3}

¹Centre for Development and Environment (CDE), University of Bern, Switzerland

²Sustainable Land Management Research Group, University of Bern, Switzerland

³Water and Land Resource Centre (WLRC), Addis Abeba, Ethiopia

Correspondence to: Vincent Roth (vincent.roth@cde.unibe.ch)

Abstract. Accurate rainfall data are the key input parameter for modelling river discharge and soil loss. Remote areas of Ethiopia often lack adequate precipitation data and where it is available, there might be substantial temporal or spatial gaps. To counter this challenge, the Climate Forecast System Reanalysis (CFSR) of the National Centers for Environmental Prediction (NCEP) readily provides

5 weather data for any geographic location on earth between 1979 and 2014. This study assesses the applicability of CFSR weather data to three watersheds in the Blue Nile Basin in Ethiopia. To this end, the Soil and Water Assessment Tool (SWAT) was set up to simulate discharge and soil loss, using CFSR and conventional weather data, in three small-scale watersheds ranging from 112 to 477 ha. Calibrated simulation results were compared to observed river discharge and observed soil loss

10 over a period of 32 years. The conventional weather data resulted in very good discharge outputs for all three watersheds, while the CFSR weather data resulted in unsatisfactory discharge outputs for all of the three gauging stations. soil loss simulation with conventional weather inputs yielded satisfactory outputs for two of three watersheds, while the CFSR weather input resulted in three unsatisfactory results. Overall, the simulations with the conventional data resulted in far better results

15 for discharge and soil loss than simulations with CFSR data. The simulations with CFSR data were unable to adequately represent the specific regional climate for the three watersheds, performing even worse in climatic areas with two rainy seasons. Hence, CFSR data should not be used lightly in remote areas with no conventional weather data where no prior analysis is possible.

1 Introduction

20 Accurately represented, spatially distributed hydro-meteorological and hydro-climatic data are the most important input parameters for hydrological modelling with the Soil and Water Assessment Tool, called SWAT hereafter (Arnold et al., 1998, 2012; Douglas-Mankin et al., 2010). Although a great deal of effort is being invested into rainfall and climatic data collection, many areas of Ethiopia have no adequate precipitation data, and where such data are available, the monitoring network

25 contains substantial temporal and spatial gaps. This makes it necessary to use other sources of modeled rainfall data for SWAT modelling. The Climate Forecast System Reanalysis (CFSR) readily provides, for any coordinated on the globe, a climate data set adapted to SWAT. This data set is the result of the close cooperation between two United States organizations, the National Centers for Environmental Prediction (NCEP) and the National Center for Atmospheric Research (NCAR),
30 which have completed a global climate data reanalysis over 36 years from 1979 through 2014. The CFSR data is based on a spectral model which includes the parametrisation of all major physical processes as described in detail in Kalnay et al. (1996), Kistler et al. (2001), and Saha et al. (2010).

However, the applicability of the CFSR data for small-scale catchments in the Ethiopian Highlands has not been adequately investigated yet. Aforementioned studies did focus on large basins with
35 numerous CFSR stations, which tend to balance errors in rainfall patterns. ~~A first evaluation, carried out by our research group, of CFSR-modelled rainfall data with that measured by the Water and Land Resource Centre (WLRC, formerly the Soil Conservation Research Programme [SCRIP]) in Ethiopia has shown substantial differences in daily, monthly, and annual rainfall.~~ So far, few studies have been conducted in the Ethiopian context on the impact of rainfall data on streamflow simulations.
40 Fuka et al. (2014) used CFSR data in a 1200 km² watershed in Ethiopia with SWAT suggesting CFSR data performs as good or even better than conventional precipitation. Worqlul et al. (2014) ~~correlating~~ correlated conventionally recorded rainfall with CFSR data over the Lake Tana basin (15'000 km²). They suggested that seasonal patterns could adequately be captured although the CFSR data did uniformly overestimate and underestimate measured rainfall. A recent study from
45 Dile and Srinivasan (2014) evaluated the use of CFSR data for hydrological prediction using SWAT in the Lake Tana basin, Ethiopia. The study achieved satisfactory results in its simulations for both CFSR and conventional data. While the outcome was better with conventional weather data, the study concludes that CFSR could be a valuable option in data-scarce regions. Other studies using CFSR data not in the Ethiopian context (De Almeida Bressiani et al., 2015; Alemayehu et al., 2015)
50 and with large to very large catchments (13'750 to 73'000 km²) concluded that CFSR data gave good to very good results and the SWAT model responded reasonably to the data set. One CFSR application in China (Yang et al., 2014) with meso-scale watersheds (366 to 1098 km²) concluded that CFSR data was significantly different and that the CFSR data spatial distribution might be the cause for the weak performance.

55 The impact of spatial variability of precipitation on model run-off showed that standard uniform rainfall assumptions can lead to large uncertainties in run-off estimation (Faurès et al., 2000). Several studies evaluating the CFSR data set have suggested that climatic models tended to overestimate interannual variability but underestimate spatial and seasonal variability (Diro et al., 2009). In another study, Cavazos and Hewitson (2005) performed statistical downscaling of daily CFSR data
60 with Artificial Neural Networks, and their predictions showed low performance in near-equatorial and tropical locations, which led them to conclude that the CFSR data is most deficient in locations

where convective processes dominate. Another study found the CFSR data set performed well on a continental scale but that it failed to adequately reproduce some regional features (Poccard et al., 2000). A study in China performed streamflow simulations by SWAT using different precipitation sources in a large arid basin using rain gauge data combined with Tropical Rainfall Measuring Mission (TRMM) data (Yu et al., 2011). The study established that streamflow modelling performed better using a combination of TRMM and rain gauge, as opposed to rain gauges only. Different interpolation schemes with the use of univariate and covariate methods showed that Kriging and Inverse Distance Weighting performed similarly well when used with the SWAT model (Wagner et al., 2012).

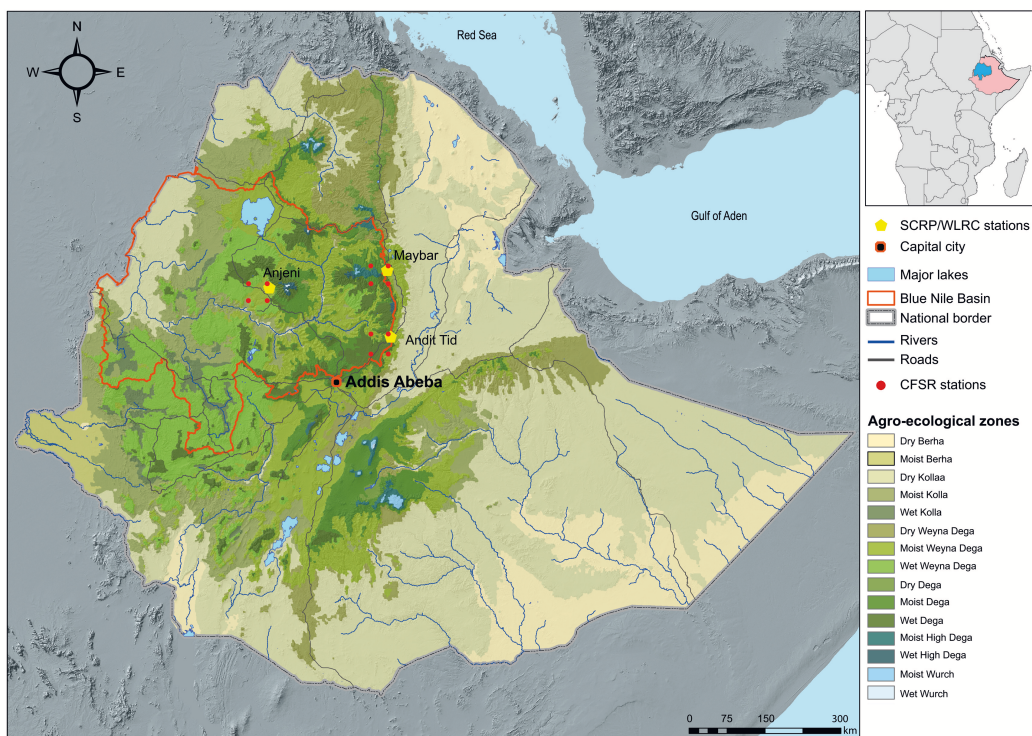


Figure 1. Map overview of Blue Nile (Abbay) Basin with the WLRC research stations, agro-ecological zones according to Hurni [Hurni \(1998\)](#) [\(1998\)](#) and emplacements of CFSR stations.

In this paper, WLRC ([Water and Land Resource Centre](#)) and SCRP ([Soil Conservation Research Programme](#)) rainfall data (hereafter called WLRC data) are compared to CFSR data over a maximum period of 34 years from 1981 to 2014 (Maybar, 33 years for Andit Tid and 32 years for Anjeni). The main objective of this paper is to compare the two data sets for annual, interannual, and seasonal cycles and subsequently to compare the effects on discharge and soil loss modeling when using these data sets in three locations in the Ethiopian highlands (see figure 1). Calibrated CFSR modeled discharge and soil loss is then compared to calibrated WLRC modelled discharge and soil loss,

and the applicability of the CFSR data in small-scale catchments for hydrological predictions is statistically evaluated and compared.

80 **2 Methods and materials**

The effects of spatial and temporal variability in the CFSR rainfall data set for the study area were examined in several steps. First the CFSR data were statistically compared to measured WLRC rainfall data for accurate representation of annual, interannual, and seasonal cycles. This is important because temporal occurrence of rainfall has a great impact not only on discharge but moreover on
85 sediment yield generation. Many crop types are sowed at the beginning of the rainy season(s), which implies extensive extensive ploughing beforehand, which leaves fields unprotected for the first few rainfall events. Hence, is clear that temporal occurrences of annual, interannual and seasonal cycles play a crucial role for the validation of a data set like the CFSR climatic data. Second, the impact of spatial and temporal variability of rainfall on hydrology and soil loss was assessed by modeling
90 discharge and soil loss with the SWAT model. The SWAT model was calibrated for discharge once using WLRC climatic data and once using the CFSR climatic data set. Afterwards soil loss was calibrated for each catchment. In a last step discharge and soil loss on a monthly basis were statistically and visually compared using performance ratings established by Moriasi et al. (2007). Each model was calibrated with one to five iterations using 500 simulations each.

95 **2.1 Study area**

The study areas of the three micro-scale catchments are located in the eastern and central part of the Blue Nile Basin. The Anjeni (AJ) and the Andit Tid (AT) are sub-basins of the Blue Nile Basin, which drains towards the west into the main Nile at Khartoum. The Maybar (MA) catchment drains into the Awash river to the East of the Ethiopian highlands. The catchment sizes range from 112 ha to
100 477 ha and their altitudinal ranges extend from 2406 to 3538 masl (see table 1 on page 5 for details). The catchments have a sub-humid to humid climate with an annual temperature ranging from 12° C to 16° C and a mean annual rainfall ranging from 1211 mm to 1690 mm. Anjeni has a unimodal rainfall pattern with a main rainy season from June to September while Andit Tid and Maybar have a bimodal rainfall regime with a small rainy season from April to May (belg) and a main rainy season
105 from June to September (kremt) followed by a long dry season from October to March. Land use is dominated by smallholder rain-fed farming-systems with grain-oriented production, ox-plough farming, and uncontrolled grazing practises.

2.2 Hydrometeorological data

The hydrometeorological data consists of two sets. The conventional or measured data contains
110 daily rainfall and maximum and minimum temperature from one climatic station for each watershed

(Lambrecht Rain Gauge Hellman type with chart recorder, and thermometers). These climatic stations have been installed in the early 1980s and span the period until 2014 with some larger gaps (see Table 1 for details) mainly from 2000 to 2010. The CFSR data (The Texas A&M University spatial sciences website, globalweather.tamu.edu) was obtained for the entire Blue Nile Basin (Bounding box: latitude 8.60° – 12.27° N and longitude 33.94° – 40.40° E) before choosing the four closest stations for each watershed. It includes daily rainfall, maximum and minimum temperature as well as wind speed, relative humidity, and solar radiation for 12 locations, 4 for each watershed (see Figure 1 for details).

Table 1. Description of study sites, data sources and time series and gaps. The subdivision of data relates to calibration and validation periods.

	Andit Tid	Anjeni	Maybar
Year of construction ^a	1982	1983	1981
Location	9.815° N 37.711° E	10.678° N 37.530° E	10.996° N 39.657° E
Size WLRC	477.3 ha ^b	113.4 ha ^c	112.8 ha ^b
Size SWAT-delineation	466.78 ha	105.23 ha	101.98 ha
Altitudinal range	3040–3538 masl	2406–2506 masl	2530–2857 masl
Data resolution			
DEM		2m	
Land use map ^d		field scale	
Soil map ^e		5x5m	
Climatic data		Daily precipitation	
		Daily min. and max. temperature	
Hydrology data		Daily discharge	
Soil loss data		Daily soil loss	
Sources		SCRIP/WLRC/CDE/own	
Data availability			
	Andit Tid	Anjeni	Maybar
Precipitation data	1982–2004 2006 2010–2014	1984–2004 2010–2014	1981–2001 2004–2006 2010–2014
Temperature	1982–1993 1997–2002 2010–2013	1984–1993 1998–2004 2010–2013	1981–1993 1995–1998 2010–2013
Discharge	1982–1993 1995–1997	1984–1993 1995–2000 2011–2014	1981–1993 1997–2006 2010–2014
Sediment	1982–1993 1995–1997 2011–2014	1984–1993 1995–1998 2011–2014	1981–1991 1995–2006 2011–2014
Subdivision of data			
Calibration	1984 – 1993	1986 – 1998	1983 – 2006
Validation	1994 – 1997	2010 – 2014	2008 – 2014

^a Year of construction is the year the station was built and monitoring started.

^b Source: (Bosshardt, 1999)

^c Source: (Bosshardt, 1997)

^d Every field in the watershed was attributed a land use type on the map

^e Source: (Belay, 2014)

2.3 Hydrologic model

120 SWAT (SWAT2012 rev. 620) was used to assess the impact of different rainfall patterns on run-off
and soil loss dynamics through the ArcSWAT interface (Version 2012.10_1.14). Here, we present
the SWAT model only briefly, as it has been widely used in the past, with extensive review of its per-
formance and parameterization in [the US, China, Switzerland, Kenya, Ethiopia and other countries](#)
(Gessesse et al., 2014; Mbonimpa, 2012; Betrie et al., 2011; Tibebe and Bewket, 2011; Lin et al.,
125 2010; Stehr et al., 2008; Schuol and Abbaspour, 2007). SWAT is a physically-based river basin or
watershed modelling tool. The SWAT model requires specific information about weather, soil prop-
erties, topography, vegetation, and land management practices occurring in the watershed (Arnold
et al., 2012). ArcSWAT divides the catchment into hydrological response units (HRUs) based on
unique combinations of soil type, land use, and slope classes that allow for a high level of spatial
130 detail simulation. Runoff is predicted separately for each HRU and routed at subbasin level to ob-
tain the total runoff for the watershed (Neitsch et al., 2011). The surface run-off is estimated in the
model using one of two options (1) the Green and Ampt method (Green and Ampt, 1911) or (2)
the Natural Resources Conservation Service Curve Number (SCS-CN) method (USDA-SCS, 1972).
The flow routing is estimated using the variable storage coefficient method (Williams, 1969), or the
135 Muskingum method (Chow, 1959). soil loss for each HRU is calculated through the Modified Uni-
versal Soil Loss Equation (MUSLE). Sediment routing in channels is estimated using stream power
(Williams, 1980) and deposition in channels is calculated through fall velocity (Arnold et al., 2012;
Gassman et al., 2007).

2.4 Spatial data

140 The spatial data used in ArcSWAT for the present study included the digital elevation model (DEM),
land use data, and soil data (see table 1 for details). The DEM for the three WLRC watersheds
was developed by the Centre for Development and Environment (CDE) of the University of Bern,
Switzerland, for the former SCRP (SCRP and CDE, 2000a, b, c) and has a resolution of 2 m. The spa-
tial distribution of soils for Anjeni was adapted from a soil survey carried out by the SCRP (Kejela,
145 1995) and a PhD dissertation by Gete Zeleke (2000). The physical and chemical parametrisation of
the soil was adapted from the soil database in Zeleke's thesis and from Kejela's report. The soil char-
acteristics for Maybar were adapted from the SCRP's Soil Conservation Research Report 7 (Weigel,
1986) and for Andit Tid from the SCRP's Research Report 3 (Bono and Seiler, 1984). Land use data
were adapted from yearly surveys carried out by SCRP and WLRC through land use mapping and
150 interviews and by own surveys in 2008 and 2012. To adapt to annually changing land use patterns,
a generic map was adapted from the WLRC land use maps of 2008, 2012, 2014 (Anjeni), and 2010,
2012, 2014 (Andit Tid, Maybar).

2.5 SWAT model setup

The watersheds were delineated using the Arc-SWAT delineation tool and its stream network compatibility was checked against the stream network from satellite images (one satellite image for each watershed). SWAT compiled 1038 HRUs for Anjeni, 1139 HRUs for Maybar, and 728 HRUs for Andit Tid respectively. ~~AH-Using a threshold with this kind of combination of small catchments in combination with highly detailed land use maps would have decreased the available level of information and increased uncertainty for modeling. Therefore~~ HRUs were defined using a zero percentage threshold area, which means that all land use, soil, and slope classes were used in the process.

The CFSR time series were complete from 1979 to 2014. The WLRC data had substantial gaps in the time series, mostly in the early 1990s and after 2000 (see Table 1 for details). The SWAT weather generator was used to fill the gaps in the WLRC data set for rainfall and temperature. Otherwise daily precipitation and minimum and maximum temperature data were used to run the model. Potential evapotranspiration (PET) was estimated using the Hargreaves method (Hargreaves et al., 1985). Daily river flow and sediment concentration data were measured at the outlet of the three WLRC watersheds. The flow observations are available throughout the entire year while calculated sediment concentrations from grab samples are only available during rainstorm events and are extrapolated over the whole time period. Personnel at the research station are instructed to take grab samples only during rainfall events, when the river is turning brown. ~~The Grab samples are taken by hand with one litre bottles which are then filtered through ashless filter papers (retention capacity 12-25 µm). The filtered sediment samples are later transported to their respective research centres which oven-dry and weights them. Sampling frequency is every 10 minutes at rising water levels and every 30 minutes after peak water level.~~ The planting and harvesting times were averaged over the entire period and planted at similar dates for the entire simulation. To simulate crop growth we used the heat unit function in ArcSWAT. Teff (~~eragrostis-teff~~*Eragrostis tef*), a widely cultivated and highly nutritional crop native to Ethiopia, was planted beginning of July and harvested beginning of December with several tillage operations preceding planting. Tillage operations were adapted to the usage of the traditional Ethiopian plough called Maresha according to Temesgen et al. (2008) with a tillage depth of 20 cm and a mixing efficiency of 0.3.

~~Runoff was estimated using the SCS-CN method and flow routing was estimated using the variable storage coefficient method.~~ The model was run for 32 years from 1983 to 2014 with daily data inputs but monthly outputs. Calibration and validation periods were chosen equally balanced regarding high-flow and low-flow years in all three catchments. The model was first calibrated and validated for discharge and then calibrated and validated for soil loss (see Table 1 on page 5 for details).

Table 2. Swat parameters used for discharge and soil loss calibration with initial ranges and fitted final parameter ranges.

Variable	Parameter name	Definition	Initial range	Andrit/Tld	Fitted parameter ranges	Agent	Maybar	
Discharge	a__CN2.mgt	Curve number	-25 to 15	16.7 to 18.7	-7 to -4		15 to 25	
	**v__GWQMN.gw	Threshold depth of water in shallow aquifer required for return flow to occur	0 to 5000	4761 to 4990	0 to 1611		2500 to 5000	
	a__ESCO.hru	Soil evaporation compensation factor	0 to 1	-0.0038 to 0.046	0.0023 to 0.067		0 to 0.35	
	v__GW_REVAP.gw	Groundwater "revp" coefficient	0.02 to 2	0.18 to 0.19	0.17 to 0.21		0.15 to 0.2	
	a__CH_K2.rte	Effective hydraulic conductivity in channel	-0.01 to 500	6 to 13	-11 to 58		-0.01 to 15	
	a__CH_N2.rte	Manning's "n" value for the main channel	-0.01 to 0.3	0.0012 to 0.067	-0.15 to 0.062		0.025 to 0.065	
	a__SURLAG.bsn	Surface runoff lag time	0.05 to 24	-0.084 to 3.98	0 to 6.63		0.05 to 12	
	a__RCHRG_DP.gw	Deep aquifer percolation fraction	0 to 1	0.36 to 0.66	-0.51 to 0.23		0 to 1	
	v__EPCO.hru	Plant uptake compensation factor	0 to 1	0.78 to 1.55	0.22 to 0.745		0 to 1	
	v__SOL_AWC(1).sol	Available water capacity of the soil layer	0 to 1	0.13 to 0.22	0.19 to 0.47		0 to 1	
	Sediment	a__SLSUBBSN.hru	Average slope length	-10 to 45	8.85 to 42.34	-6.24 to -4.60		-5 to 5
		a__HRU_SLP.hru	Average slope steepness	-0.1 to 0.4	-0.16 to -0.04	-0.12 to -0.09		-0.5 to 0.72
		a__USLE_K(1).sol	USLE equation soil erodibility (K) factor	-0.11 to 0.24	0.079 to 0.14	0.44 to 0.49		0.04 to 0.31
a__USLE_C.plant.dat		Min value of USLE C factor applicable to the land cover/plant	0.04 to 0.24	0.0009 to 0.004	0.48 to 0.5		0.34 to 0.626	
a__USLE_Pngt		USLE equation support practice	0.42 to 0.79	-0.41 to 0.19	0.16 to 0.26		0.09 to 0.92	
v__SFCON.bsn		Linear parameter the maximum amount of sediment that can be reentrained	0.0001 to 0.01	0.005 to 0.007	0.0067 to 0.010		-0.01 to 0.01	
v__SPEXP.bsn		Exponent parameter for calculating sediment reentrained	1 to 1.5	1.27 to 1.5	1.32 to 1.37		1.23 to 1.35	
v__CH_COV1.rte		Channel cover factor	-0.05 to 0.6	0.2 to 0.39	0.057 to 0.099		-0.05 to 0.02	
v__PRF_BSN.bsn		Peak rate adjustment factor for sediment routing in the main channel	0 to 2	0.9 to 1.1	1.2 to 1.6		0.89 to 1.2	

* a__ means a given value is added to the existing parameter value

** v__ means the existing parameter value is to be replaced by a given value

2.6 Calibration setup, validation, and sensitivity analysis

The SUFI-2 algorithm in SWAT-Cup (Abbaspour et al., 2004, 2007) was used for the calibration and validation procedure and for sensitivity, and uncertainty analysis. SWAT-Cup calculates the 95% prediction uncertainty band (95PPU) in an iterative process. For the goodness of fit two indices called "p-factor" and "r-factor" p-factor and r-factor are used. The ~~P-factor~~ p-factor is the fraction of measured data inside the 95PPU band, and varies from 0 to 1 where 1 indicates perfect model simulation. The ~~r-factor~~ r-factor is the ratio of the average width of the 95PPU band and the standard deviation of the measured variable. There are different approaches regarding balance of ~~p-factor~~ and ~~r-factor~~. ~~The p-factor~~ p-factor and r-factor. ~~The p-factor~~ p-factor should preferably be above 0.7 for discharge and the ~~r-factor~~ r-factor value should be below 1.5 (Abbaspour, 2015), but when measured data are of lower quality other values apply. Once acceptable ~~p-factor~~ and ~~r-factor~~ p-factor and r-factor are reached statistical parameters for time series analysis are compared.

For this study we used the Nash-Sutcliffe Efficiency (NSE), the standardized Root Mean Square Error (RSR), and the Percent Bias (PBIAS). These are well-known statistical parameters, which are often used for comparison of time-series especially in hydrological modelling (Starks and Moriasi, 2009; Gebremicael et al., 2013; Dile and Srinivasan, 2014; Abbaspour, 2015; De Almeida Bressiani et al., 2015) and therefore help others to compare our modeling results to previous studies. This study refers to the model evaluation techniques described by Moriasi et al. (2007), who established guidelines for the proposed statistical parameters (see table 3 below for details). The NSE is a normalised statistic that indicates how well a plot of observed versus simulated data fits the 1:1 line and determines the relative magnitude of the residual variance compared to the measured data variance (Nash and Sutcliffe, 1970). NSE ranges from $-\infty$ (negative infinity) to 1, with a perfect concordance of modelled to observed data at 1, a balanced accuracy at 0 and a better accuracy of observations below zero. The RSR is a standardized Root Mean Square Error (RMSE, standard deviation of the model prediction error), which is calculated from the ratio of the RMSE and the standard deviation of measured data. RSR incorporates the benefits of error index statistics and includes a scaling factor. RSR varies from the optimal value of 0, which indicates zero RMSE or residual variation, to a large positive value, which indicates a large residual value and therefore worse model simulation performance (Moriasi et al., 2007).

The PBIAS measures the average tendency of the simulated values to be larger or smaller than their observed counterparts. The optimal value of PBIAS is zero. PBIAS is the deviation of data being evaluated, expressed as a percentage. A positive PBIAS value indicates the model is under-predicting measured values, whereas negative values indicate over-predicting.

For this article the recommendations for reported values were strictly applied for discharge calibration and lowered for soil loss calibration.

The model performance was also evaluated using the hydrograph visual technique, which allows a visual model evaluation overview. As suggested by Legates and McCabe 1999 this should typically

Table 3. General performance ratings recommended by Moriasi et al. (2007)

Performance Rating	RSR	NSE	PBIAS	
			Streamflow	Sediment
Very good	$0.00 \leq \text{RSR} \leq 0.50$	$0.75 < \text{NSE} \leq 1.00$	$\text{PBIAS} < \pm 10$	$\text{PBIAS} \leq \pm 15$
Good	$0.50 < \text{RSR} \leq 0.60$	$0.65 < \text{NSE} \leq 0.75$	$\pm 10 \leq \text{PBIAS} < \pm 15$	$\pm 15 \leq \text{PBIAS} < \pm 30$
Satisfactory	$0.60 < \text{RSR} \leq 0.70$	$0.50 < \text{NSE} \leq 0.65$	$\pm 15 \leq \text{PBIAS} < \pm 25$	$\pm 30 \leq \text{PBIAS} < \pm 55$
Unsatisfactory	$\text{RSR} > 0.70$	$\text{NSE} \leq 0.50$	$\text{PBIAS} \geq \pm 25$	$\text{PBIAS} \geq \pm 55$

be one of the first steps in model evaluation. Adequate visual agreement between observed and simulated data was compared on discharge and soil loss plots on a monthly basis.

3 Results and discussion

3.1 General comparison of CFSR and WLRC rainfall data

The raw CFSR and WLRC rainfall input data showed significantly different patterns and rainfall amounts. For Andit Tid, situated on the eastern escarpment of the Blue Nile Basin, the belg and krent rainfall seasons were temporally adequately represented; i.e., the timely occurrences of the rainy seasons were correctly represented through the CFSR data. However, total CFSR rainfall amounts were far from measured values: while the belg rainfall season in the CFSR data showed some overestimation, the total rainfall and length of the krent rainy season were strongly underestimated. WLRC data distinctly show a main rainy season from July to September and a light rainy season from March to May, while the CFSR data only show mildly increased rainfall in March, April, July, and August but no distinct rainy season (see figure 2 on page 11 for comparison).

Precipitation distribution

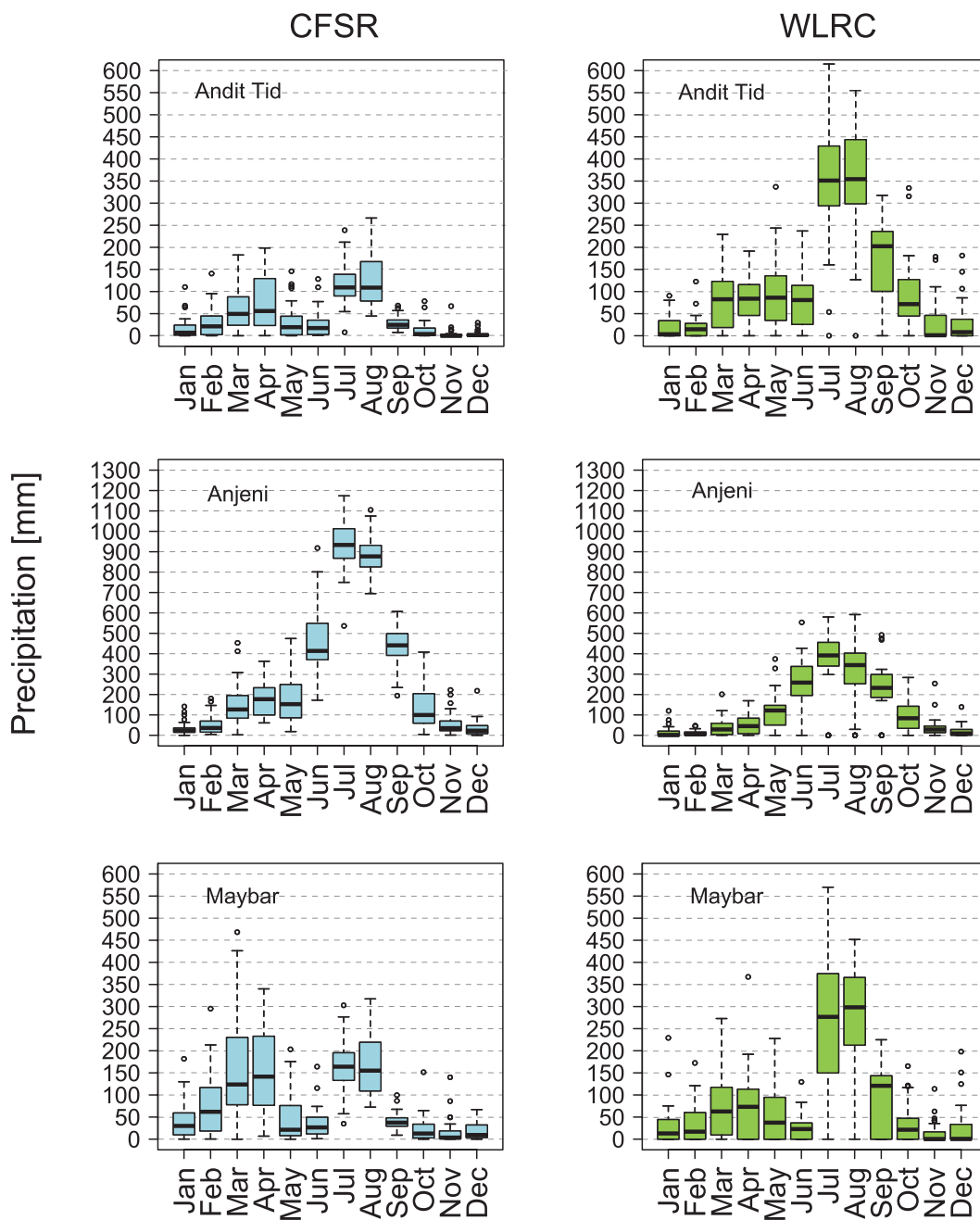


Figure 2. Monthly CFSR and WLRC rainfall distribution of all station as boxplots with monthly rainfall distribution. CFSR data from 1979 to 2014 and WLRC data from 1981/1982/1984 to 2014. See Table 1 for details.

The CFSR data for Anjeni highly overestimated rainfall in the region. While WLRC data showed a clear trend towards only one main rainy season from May/June to September with average monthly rainfall ranging from 100 mm (May) to 380 mm (July), the CFSR data showed a pronounced main rainy season with monthly averages ranging from 400 mm to 1000 mm from June to September and a distinct small rainy season from March to May with monthly averages three times as high as the WLRC rainfall data. The total annual CFSR rainfall was three times the WLRC annual rainfall.

WLRC Maybar data showed a clear seasonality, with two rainy seasons, one in March and April, and one from July to August. The belg rainy season showed only mild increase of average rainfall to around 75 mm/month and the kremt rainy season showed a distinct increase of rainfall to an average of 270 mm/month. From the CFSR rainfall data, no clear distinction could be made between the belg and the kremt rainy season – both showed a rainfall increase to around 150 mm/month and the total annual rainfall was strongly underestimated.

In general, all CFSR rainfall patterns showed a similar composition: data variability was more uniformly distributed and the distinct seasonality of the WLRC data was not well represented. CFSR data underestimated the bimodal rainfall climates and strongly overestimated the unimodal rainfall climate. The WLRC data has a highly variable rainfall range in the bimodal rainfall locations, which is not reflected by the CFSR data. In general, the CFSR rainfall data does not represent the high variability of rainfall measured by WLRC data.

3.1.1 Seasonal comparison of rainfall data

The seasonal components of the CFSR rainfall were assessed for the three stations by breaking the monthly data into seasons (dry season from October to March, small rainy season (belg) from April to May, and large rainy season (kremt) from June to September) and by comparing only these. The comparison of measured rainfall to modelled rainfall for the dry season from October to March was unsatisfactory (NSE < 0.50) with negative NSEs for three stations (AT: -1.92, AJ: -12.19, MA: -0.77). The PBIAS indicated model underestimation for Anjeni and Maybar (AJ: 134.2, MA: 30.7) and an overestimation of the rainfall for Andit Tid (AT: -55.2). The RSR showed large positive values (AT: 1.68, AJ: 3.55, MA: 1.3) indicating a low model simulation performance and again an unsatisfactory rating (see table).

For the belg rainy season from April to May the model performed badly. Surprisingly, the model performed worst in Anjeni, where no small rainy season occurs. The CFSR model performance for Anjeni was unsatisfactory, with an NSE of -5.42, a PBIAS of 106.1, and an RSR of 2.48. The CFSR model overestimated the monthly rainfall in all but 5 out of 22 years. Andit Tid and Maybar were slightly more adequate but still unsatisfactory. NSE was -0.79 and -0.24 respectively, indicating unsatisfactory performance. PBIAS was -39.4 and 24.3, respectively. RSR was 1.31 and 0.85, which again indicates an unsatisfactory result.

Table 4. Seasonal comparison of rainfall time series of daily rainfall amounts. Satisfactory performance ratings are highlighted in bold. Details for duration and gaps can be found in table 1

	Andit Tid (1982-2014)	Anjeni (1984-2014)	Maybar (1981-2014)
Dry season Oct-Nov-Dec-Jan-Feb-Mar			
RSR	1.68	3.55	1.3
NSE	-1.92	-12.9	-0.77
PBIAS	55.2	134.2	30.7 <u>30.7</u>
Belg Apr-May			
RSR	1.31	2.48	0.85
NSE	-0.79	-5.42	-0.24
PBIAS	-39.4	106.1	24.3 <u>24.3</u>
Kremt Jun-Jul-Aug-Sep			
RSR	3.23	7.0	2.03
NSE	-9.79	-50.09	-3.28
PBIAS	-69.2	128	-47.1

The kremt rainy season from June to September is the season with the heaviest rainfall throughout the year. On average some 77% of the yearly rain falls within this time period. This is also the time period where the heaviest soil erosion occurs induced by rainfall. For Anjeni, Andit Tid, and Maybar the CFSR model performed unsatisfactorily (see Table 7 and Figure 3 in appendix A4) with NSEs below 0.50 (AT: -9.79, AJ: -50.09, MA: -3.28), RSRs above 0.70 (AT: 3.23, AJ: 7.0, MA: 2.03), and PBIAS values ranging from -69.2 (AT) and -47.1 (MA) to +128 (AJ).

The kremt rainy season was underestimated by the CFSR model for the bimodal rainfall pattern in Andit Tid and Maybar, while the unimodal rainfall pattern was heavily overestimated by the CFSR model.

3.2 Discharge modeling with WLRC and CFSR data

The performance ratings for each of the three catchments including SWAT-Cup *p-factor* and *r-factor* are summarised in Table 5 on page 19. The table is divided into discharge comparison and soil loss comparison. Final parameter ranges are presented in Table 2 on page 8.

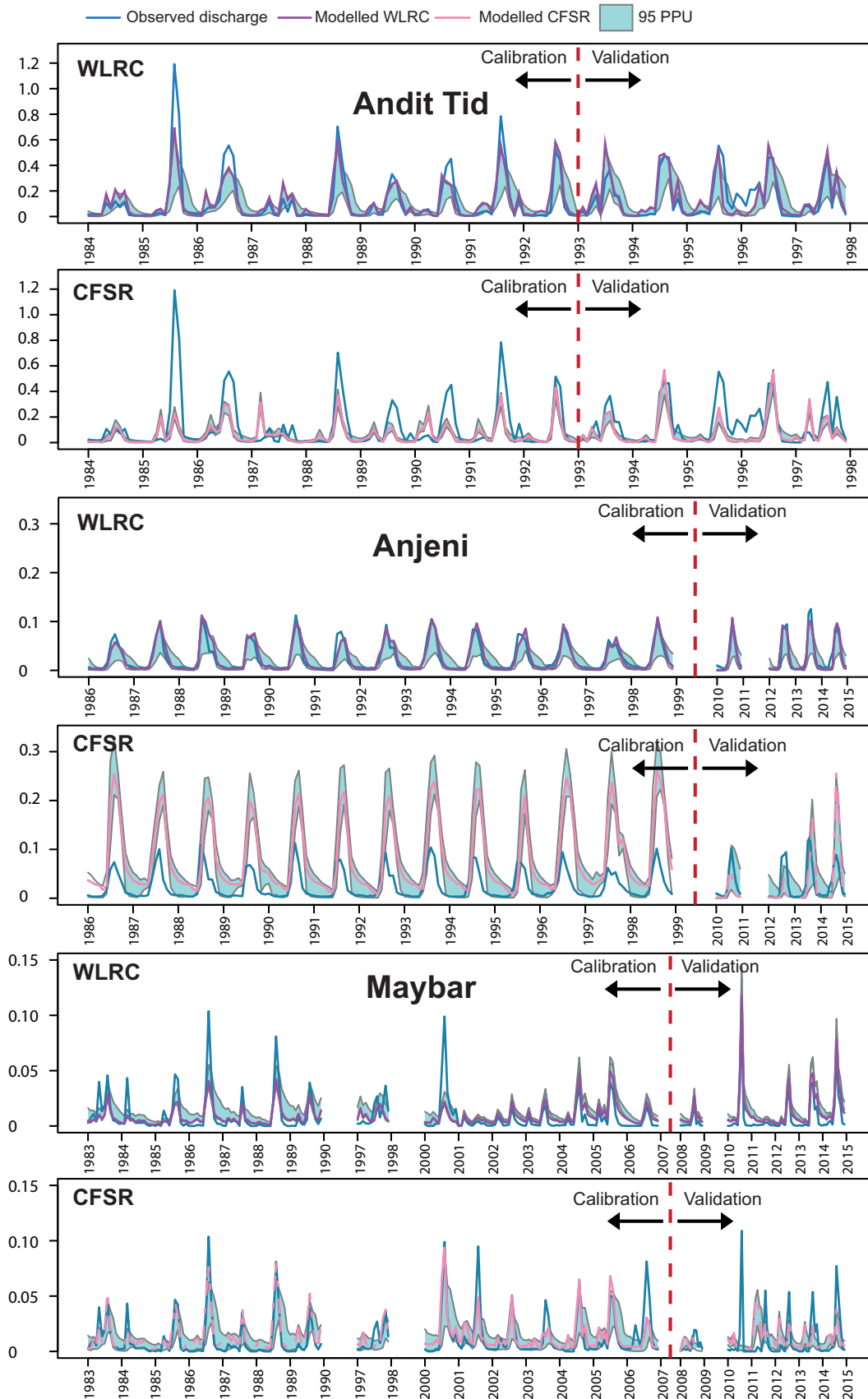


Figure 3. Modelled SWAT discharge compared to measured discharge (blue) for WLRC (violet) and CFSR (pink) input data and the 95 Percent Prediction Uncertainty (light blue). Each sub-figure contains the calibration and the validation period. Results are given in m^3/s .

285 **3.2.1 Andit Tid**

Calibration of Andit Tid with WLRC rainfall data yielded *very good* results. With ~~an a~~ ~~p-factor~~ ~~p-factor~~ of 0.71 and ~~a~~ ~~p-factor~~ ~~r-factor~~ of 0.53 (see Chapter 2.6 on page 9 for performance rating) the statistical parameters RSR, NSE and PBIAS yielded "*very good*" results (0.46, 0.79, 3.1 respectively). The CFSR rainfall data, which underestimated the WLRC rainfall pattern, yielded *unsatisfactory* results with RSR, NSE, and PBIAS of 0.80, 0.36, and 31.4. The hydrograph on page 14 shows that the underestimation of rainfall amounts for Andit Tid did result in a constant underestimation of peak flows and of base flows throughout the whole time period.

Validation of discharge for Andit Tid with WRLC data showed *very good* results with RSR: 0.46, NSE: 0.79 and PBIAS 9.6 and marginally *unsatisfactory* results for the CFSR dataset (RSR: 0.74, NSE: 0.45, PBIAS: 37.9).

3.2.2 Anjeni

Anjeni showed *very good* result for calibration with WLRC rainfall data. RSR, NSE and PBIAS were well inside the optimal performance ratings (0.39, 0.85, and 3.7 respectively), see table 3 on page 10 and figure 3 on page 14 for comparison.

Satisfactory calibration could not be reached with CFSR data and neither baseflow, nor peaks could be adequately represented. With a *p-factor* of 0.49 and an ~~p-factor~~ ~~r-factor~~ of 1.91 the statistical parameters were *unsatisfactory* (RSR: 2.70, NSE:-6.27, and PBIAS: -226.0). The hydrograph (Figure 3 on page 14) shows that the strong overestimation of CFSR rainfall data during belg lead to a modelled discharge with extreme peaks during krent, which do not correspond to the discharge regime of measured WLRC data.

Validation of discharge for Anjeni with WRLC data showed *very good* results with RSR: 0.41, NSE: 0.83 and PBIAS -6.7 and *unsatisfactory* results for the CFSR dataset with RSR: 1.24, NSE: -0.53, and *very good* PBIAS: 8.1.

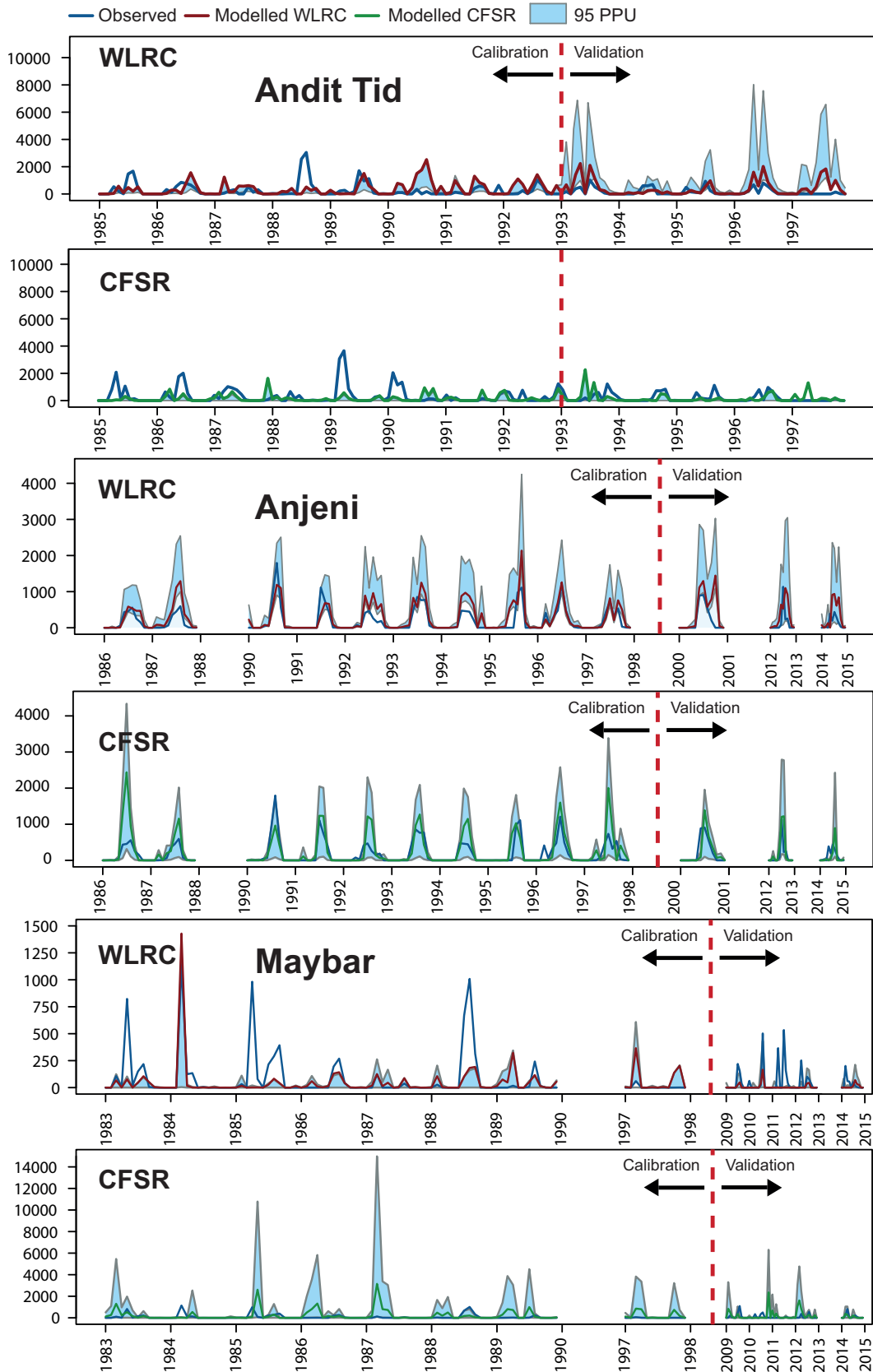


Figure 4. Modelled SWAT soil loss compared to measured soil loss (blue) for WLRC (red) and CFSR (green) input data and the 95 Percent Prediction Uncertainty (light blue). Each sub-figure contains the calibration and the validation period. Results are given in tons per month (t/month).

3.2.3 Maybar

310 Calibration of Maybar with WLRC rainfall data proved to be less straight forward than Anjeni and
Andit Tid. The rugged topography of Maybar combined with a inadequate cross-section proved
challenging to model. Nonetheless, *satisfactory* result were achieved for discharge with RSR, NSE,
and PBIAS of 0.63, 0.60, and -23.4 respectively.

The CFSR rainfall data yielded an *unsatisfactory* discharge simulation result with RSR, NSE, and
315 PBIAS. As the CFSR modelled rainfall shows two similar rainy seasons where WLRC rainfall data
has distinct belg and kremt rainy season, SWAT modelled discharge showed similar trends. Figure 3
shows regular discharge peaks from February to March, in accordance to rainfall pattern deviation
as seen on Figure 2, when no increase of discharge was measured at the research station. The SWAT
model reflected input rainfall pattern adequately, which lead to discharge peaks during belg, when
320 there are none in the measured data. At the same time it lead to reduced discharge peaks during
kremt, when the measured WLRC data are clearly pronounced.

Validation of discharge for Maybar with WRLC data showed *good* results with RSR: 0.56, NSE: 0.74
and PBIAS 17.3 and *unsatisfactory* results for the CFSR dataset with RSR: 0.98, NSE: 0.04, and *very*
good PBIAS: -1.9.

325 3.3 Soil loss modelling with WLRC and CFSR data

Soil loss modelling was calibrated using the same set of 9 parameters for each catchment (see Table
2 on page 8 for description). Calibration of soil loss was conducted using the parameter ranges
for discharge calibration, and adapting the sediment parameters while leaving discharge parameters
untouched. Performance ratings for each of the three catchments including SWAT-Cup *p-factor* and
330 ~~*p-factor*~~ *r-factor* are summarised in table 5 on page 19 and visually represented on Figure 4 on page
16. Performance rating levels were considerably lowered for soil loss modeling. Threshold for the
p-factor was set at 0.40 with an *r-factor* below 1.80 and standard performance ratings for RSR,
NSE and PBIAS.

3.3.1 Andit Tid

335 The good results from WLRC discharge modeling facilitated soil loss calibration and resulted in
satisfactory performance ratings for RSR, NSE (0.69, 0.65), and an *unsatisfactory* PBIAS, which
was slightly below threshold with -56.3. Graphic representation showed good visual results (see
figure 4 on page 16) in general, but also showed constant overestimation of the modelled data except
for three years 1988, 1989, and 1994.

340 Validation of sediment yield for Andit Tid with WRLC data showed a marginally ~~*satisfactory*~~ *satisfactory*
result with RSR: 0.68, NSE: 0.51 and ~~*unsatisfactory*~~ *unsatisfactory* PBIAS -64.3 indicating a general

overestimation and *unsatisfactory* results for the CFSR dataset with RSR: 1.39, NSE: -0.94, and *satisfactory* PBIAS: -11.9 indicating underestimation.

3.3.2 Anjeni

345 Soil loss modeling with WLRC rainfall data and calibrated discharge yielded *satisfactory* results. With a *P-factor* of 0.40 and an *r-factor* of 0.65, and statistical parameters RSR: 0.67, NSE: 0.55, and PBIAS: -19.9 the model was just *satisfactory*. The graphic showed adequate results with a constant overestimation of the model except for two years in the early nineties. Modelling with CFSR data, resulted in strongly unsatisfactory results (RSR: 1.01, NSE: -0.02, and PBIAS: -33.9), which
350 can easily be explained with the strong model overestimation of rainfall and subsequently discharge. Parameters could not be adapted further to achieve better results as they were already set to the edge of the possible ranges.

Validation of sediment yield for Anjeni with WRLC data showed *satisfactory* results with RSR: 0.67, NSE: 0.64 and PBIAS -14.1 indicating a general overestimation and *unsatisfactory* results for the
355 CFSR dataset with RSR: 1.02, NSE: -0.03, and *satisfactory* PBIAS: -1.9 indicating underestimation.

3.3.3 Maybar

Soil loss calibration with WLRC rainfall data and calibrated discharge resulted in *unsatisfactory* statistical results (RSR: 1.24, NSE: -0.54, PBIAS: -34.1). *P-factor* and *r-factor* were 0.42 and
360 0.60, respectively.

Calibration in Maybar with CFSR rainfall data yielded *unsatisfactory* results (RSR: 1.02, NSE: -0.03, PBIAS: 54.4). As described in the discharge calibration section (Section 3.2.3), CFSR rainfall data in Maybar tended towards overestimation of belg and underestimation of kremt, which resulted in overestimation of monthly discharge during belg and underestimation during kremt. This trend
365 was redrawn with sediment calibration resulting in small but distinct peaks during belg and smaller peaks than measured during kremt. There was no satisfactory calibration possible with CFSR rainfall data.

Validation of sediment yield for Maybar with WRLC data showed *satisfactory* results for both data sets with a very strong overestimation from the CFSR data set and an equally strong overestimation
370 from the WLRC data set.

4 Conclusions

In this paper we studied the applicability of CFSR weather data to three small-scale watersheds in the Ethiopian highlands with the goal of assessing the usability for future modelling in data-scarce regions. First, we compared CFSR and WLRC rainfall data at three stations in the Ethiopian Highlands

Table 5. Calibration and validation results of monthly CFSR and WLRC modelled discharge and soil loss. Values that meet at least the "satisfactory" criteria are highlighted in bold

	Andit Tid		Anjeni		Maybar	
	CFSR	WLRC	CFSR	WLRC	CFSR	WLRC
Discharge - Calibration						
p-factor	0.49	0.71	0.49	0.92	0.41	0.61
r-factor	0.20	0.53	1.91	0.46	0.54	0.96
RSR	0.83	0.46	2.70	0.37	1.16	0.53
NSE	0.31	0.79	-6.27	0.86	-0.35	0.72
PBIAS	46.1	3.1	-226.0	2.0	29.6	1.5
Discharge - Validation						
p-factor	0.30	0.66	0.69	0.69	0.38	0.61
r-factor	0.29	0.54	1.41	0.57	0.52	1.11
RSR	0.74	0.46	1.24	0.41	0.98	0.56
NSE	0.45	0.79	-0.53	0.83	0.04	0.74
PBIAS	37.9	9.6	8.1 8.1	-6.7	-1.9 -1.9	-17.3
soil loss - Calibration						
p-factor	0.33	0.45	0.32	0.40	0.44	0.28
r-factor	0.19	0.59	1.30	0.65	4.47	0.28
RSR	1.02	0.67	1.01	0.67	2.55	0.84
NSE	-0.03	0.64	-0.02	0.55	-5.51	0.29
PBIAS	54.4 54.4	-14.1	-33.9	-19.9	180.5	39.2
soil loss - Validation						
p-factor	0.30	0.39	0.38	0.38	0.23	0.15
r-factor	0.51	1.60	1.61	1.10	2.67	0.06
RSR	1.39	0.68	1.08	0.62	2.24	0.98
NSE	-0.94	0.51	-0.17	0.62	-4.04	-0.03
PBIAS	11.9 11.9	-64.3	-30.5	-31.3	-94.7	92.8

375 and therefore rainfall data was compared on a monthly basis with boxplots. Second, we modelled discharge with the SWAT model; once with WLRC data and once with CFSR rainfall data. Third, we modelled soil loss for the three stations with the SWAT model and compared calibrated results to measured data. The WLRC rainfall data set resulted in three calibrated and validated discharge models while the CFSR data resulted in none. For the soil loss modeling the WLRC rainfall data

380 resulted in two out of three calibrated and validated models while none could be adequately cali-
brated or validated for the CFSR data set. The SWAT modelling showed that CFSR rainfall pattern
and rainfall yearly total amount variations were so significant that SWAT model calibration could
not adequately represent measured discharge and sediment yield.

Our results clearly show that adequate discharge and soil loss modelling was not possible, in
385 present case, with the CFSR data. This suggests that SWAT simulations in small-scale watersheds in
the Ethiopian highlands do not perform well with CFSR data in every case, and that sometimes there
is no substitute for high-quality conventional weather data. Such weather data – with high spatial
and temporal climatic data resolution – were available for the three small-scale catchments used in
the study but are not in many other cases. In these other cases one should carefully check CFSR data
390 against similar climatic stations with conventionally measured data. In addition, discharge and soil
loss modelling showed that usage of CFSR weather data not only resulted in substantial deviation in
both total discharge and total soil loss, but also in the seasonal rainfall pattern. The seasonal weather
pattern is one of the major drivers of soil loss and is especially pronounced in the Blue Nile Basin,
with one long rainy season occurring as fields are ploughed and sowed. Thus, contrary to previous
395 studies for the Ethiopian Highlands, this study suggests that CFSR data may not be applicable in
any case for small-scale modelling in data-scarce regions: the authors even suggest that outcomes
of SWAT modelling with CFSR data for small-scale catchments may yield erroneous results which
cannot be verified and may lead to wrong conclusions. Nonetheless, the advantage of CFSR data is
its completeness over time, which would allow for comprehensive watershed modelling in regions
400 with no conventional weather data or with longer gaps in conventionally recorded rainfall records.

References

- Abbaspour, K. C.: SWAT-CUP 2012: SWAT calibration and uncertainty programs-A user manual, Tech. rep., Swiss Federal Institute of Aquatic Science and Technology, Eawag, 2015.
- Abbaspour, K. C., Johnson, C. A., and van Genuchten, M. T.: Estimating Uncertain Flow and Transport Parameters Using a Sequential Uncertainty Fitting Procedure, *Vadose Zone Journal*, 3, 1340–1352, doi:10.2113/3.4.1340, 2004.
- Abbaspour, K. C., Vejdani, M., Haghighat, S., and Yang, J.: SWAT-CUP Calibration and Uncertainty Programs for SWAT, in: *The fourth International SWAT conference*, pp. 1596–1602, Delft, Netherlands, 2007.
- Alemayehu, T., Griensven, A., and Bauwens, W.: Evaluating CFSR and WATCH Data as Input to SWAT for the Estimation of the Potential Evapotranspiration in a Data-Scarce Eastern-African Catchment, *Journal of Hydrologic Engineering*, p. 5015028, doi:10.1061/(ASCE)HE.1943-5584.0001305, 2015.
- Arnold, J. G., Srinivasan, R., Muttiah, R. S., and Williams, J. R.: Large area hydrologic modeling and assessment Part I: model development, *Journal of the American Water Resources Association (JAWRA)*, 34, 73–89, 1998.
- Arnold, J. G., Moriasi, D. N., Gassman, P. W., Abbaspour, K. C., White, M. J., Srinivasan, R., Santhi, C., Harmel, R. D., Van Griensven, A., Van Liew, M. W., Kannan, N., and Jha, M. K.: SWAT: Model use, calibration and validation, *Transactions of the ASABE*, 55, 1491–1508, 2012.
- Belay, G.: Gerda Watershed Soil Report, Tech. Rep. February, Water and Land Resource Centre (WLRC), Addis Abeba, Addis Abeba, 2014.
- Betrie, G. D., Mohamed, Y. A., Van Griensven, A., Srinivasan, R., and Mynett, A.: Sediment management modelling in the Blue Nile Basin using SWAT model, *Hydrology and Earth System Sciences*, 15, 807–818, doi:10.5194/hess-15-807-2011, 2011.
- Bono, R. and Seiler, W.: *The Soils of the Andit-Tid Research Unit (Ethiopia) Classification, Morphology and Ecology*, with soil map 1:10'000, University of Bern, Switzerland, Bern, 1984.
- Bosshardt, U.: *Catchment Discharge and Suspended Sediment Transport as Indicators of Physical Soil and Water Conservation in the Minchet Catchment*, Anjeni Research Unit, Soil Conservation Research Programme, Bern, Switzerland, 1997.
- Bosshardt, U.: *Hydro-sedimentological Characterisation of Kori Sheleko and Hulet Wenz Catchments*, Maybar and Andit Tid Research Units, Soil Conservation Research Programme, Bern, Switzerland, 1999.
- Cavazos, T. and Hewitson, B. C.: Performance of NCEP – NCAR reanalysis variables in statistical downscaling of daily precipitation, *Climate Research*, 28, 95–107, 2005.
- CFSR: Global Weather Data for SWAT, <http://globalweather.tamu.edu/>.
- Chow, V. T.: *Open-channel hydraulics*, McGraw-Hill, Boston, MA [etc.], doi:ISBN 07-010776-9, 1959.
- De Almeida Bressiani, D., Srinivasan, R., Jones, C. A., and Mendiondo, E. M.: Effects of different spatial and temporal weather data resolutions on the stream flow modeling of a semi-arid basin, Northeast Brazil, *International Journal of Agricultural and Biological Engineering*, 8, 1–16, doi:10.3965/j.ijabe.20150803.970, 2015.
- Dile, Y. T. and Srinivasan, R.: Evaluation of CFSR climate data for hydrologic prediction in data-scarce watersheds: an application in the Blue Nile River Basin, *JAWRA Journal of the American Water Resources Association*, 50, 1226–1241, doi:10.1111/jawr.12182, 2014.

- Diro, G. T., Grimes, D. I. F., Black, E., O'Neill, A., and Pardo-Iguzquiza, E.: Evaluation of reanalysis rainfall estimates over Ethiopia, *International Journal of Climatology*, 29, 67–78, doi:10.1002/joc.1699, 2009.
- 445 Douglas-Mankin, K., Srinivasan, R., and Arnold, J. G.: Soil and Water Assessment Tool (SWAT) Model: Current development and applications, *American Society of Agricultural and Biological Engineers*, 53, 1423–1431, 2010.
- Faurès, J.-M., Goodrich, D. C., Woolhiser, D. A., and Sorooshian, S.: Impact of small-scale spatial rainfall variability on runoff modeling, *Journal of Hydrology*, 173, 309–326, 2000.
- 450 Fuka, D. R., Walter, M. T., MacAlister, C., Degaetano, A. T., Steenhuis, T. S., and Easton, Z. M.: Using the Climate Forecast System Reanalysis as weather input data for watershed models, *Hydrological Processes*, 28, 5613–5623, doi:10.1002/hyp.10073, 2014.
- Gassman, P. W., Reyes, M. R., Green, C. H., and Arnold, J. G.: The Soil and Water Assessment Tool: Historical development, applications, and future research directions, *American Society of Agricultural and Biological Engineers*, 50, 1211–1250, 2007.
- 455 Gebremicael, T. G., Mohamed, Y. A., Betrie, G. D., van der Zaag, P., and Teferi, E.: Trend analysis of runoff and sediment fluxes in the Upper Blue Nile basin: A combined analysis of statistical tests, physically-based models and landuse maps, *Journal of Hydrology*, 482, 57–68, doi:10.1016/j.jhydrol.2012.12.023, 2013.
- Gessesse, B., Bewket, W., and Bräuning, A.: Model-based characterization and monitoring of runoff and soil erosion in response to land use/land cover changes in the Modjo watershed, Ethiopia, *Land Degradation & Development*, pp. 1–14, doi:10.1002/ldr.2276, 2014.
- 460 Green, W. A. and Ampt, G. A.: Studies on Soil Physics, *The Journal of Agricultural Science*, 4, 1–24, doi:10.1017/S0021859600001441, 1911.
- Hurni, H.: Agroecological belts of Ethiopia: Explanatory notes on three maps at a scale of 1:1,000,000, *Soil Conservation Research Programme (SCRIP); Centre for Development and Environment (CDE)*, Bern, Switzerland, 1998.
- 465 Kalnay, E., Kanamitsu, M., Kistler, R., Collins, W., Deaven, D., Gandin, L., Iredell, M., Saha, S., White, G., Woollen, J., Zhu, Y., Chelliah, M., Ebisuzaki, W., Higgins, W., Janowiak, J. E., Mo, K. C., Ropelewski, C., Wang, J., Leetmaa, A., Reynolds, R., Jenne, R., and Joseph, D.: The NCEP/NCAR 40-Year Reanalysis Project, *Bulletin of the American Meteorological Society*, 77, 437–471, 1996.
- 470 Kejela, K.: The soils of the Anjeni Area - Gojam Research Unit, Ethiopia, University of Bern, Switzerland, Bern, Switzerland, research r edn., 1995.
- Kistler, R., Kalnay, E., Collins, W., Saha, S., White, G., Woollen, J., Chelliah, M., Ebisuzaki, W., Kanamitsu, M., Kousky, V., Dool, H. V. D., Jenne, R., and Fiorino, M.: The NCEP – NCAR 50-Year Reanalysis : Monthly Means CD-ROM and Documentation, *Bulletin of the American Meteorological Society*, 82, 247–268, 2001.
- 475 Legates, D. R. and McCabe, G. J.: Evaluating the use of 'goodness-of-fit' measures in hydrologic and hydroclimatic model validation, *Water Resources Research*, 35, 233–241, doi:10.1029/1998WR900018, 1999.
- Lin, S., Jing, C., Chaplot, V., Yu, X., Zhang, Z., Moore, N., and Wu, J.: Effect of DEM resolution on SWAT outputs of runoff, sediment and nutrients, *Hydrology and Earth System Sciences Discussions*, 7, 4411–4435, doi:10.5194/hessd-7-4411-2010, 2010.

- 480 Mbonimpa, E. G.: SWAT Model Application to Assess the Impact of Intensive Corn-farming on Runoff, Sediments and Phosphorous loss from an Agricultural Watershed in Wisconsin, *Journal of Water Resource and Protection*, 04, 423–431, doi:10.4236/jwarp.2012.47049, 2012.
- Moriasi, D. N., Arnold, J. G., Liew, M. W. V., Bingner, R. L., Harmel, R. D., and Veith, T. L.: Model evaluation guidelines for systematic quantification of accuracy in watershed simulations, *American Society of Agricultural and Biological Engineers*, 50, 885–900, 2007.
- 485 Nash, J. E. and Sutcliffe, J. V.: River Flow Forecasting through Conceptual Models: Part 1. - A Discussion of Principles, *Journal of Hydrology*, 10, 282–290, 1970.
- Poccard, I., Janicot, S., and Camberlin, P.: Comparison of rainfall structures between NCEP/NCAR reanalyses and observed data over tropical Africa, *Climate Dynamics*, 16, 897–915, doi:10.1007/s003820000087, 2000.
- 490 Saha, S., Moorthi, S., Pan, H.-L., Wu, X., Wang, J., Nadiga, S., Tripp, P., Kistler, R., Woollen, J., Behringer, D., Liu, H., Stokes, D., Grumbine, R., Gayno, G., Wang, J., Hou, Y.-T., Chuang, H.-Y., Juang, H.-M. H., Sela, J., Iredell, M., Treadon, R., Kleist, D., Van Delst, P., Keyser, D., Derber, J., Ek, M., Meng, J., Wei, H., Yang, R., Lord, S., Van Den Dool, H., Kumar, A., Wang, W., Long, C., Chelliah, M., Xue, Y., Huang, B., Schemm, J.-K., Ebisuzaki, W., Lin, R., Xie, P., Chen, M., Zhou, S., Higgins, W., Zou, C.-Z., Liu, Q., Chen, Y., Han, Y., Cucurull, L., Reynolds, R. W., Rutledge, G., and Goldberg, M.: The NCEP Climate Forecast System Re-analysis, *Bulletin of the American Meteorological Society*, 91, 1015–1057, doi:10.1175/2010BAMS3001.1, 2010.
- 495 Schuol, J. and Abbaspour, K. C.: Using monthly weather statistics to generate daily data in a SWAT model application to West Africa, *Ecological Modelling*, 201, 301–311, doi:10.1016/j.ecolmodel.2006.09.028, 2007.
- 500 SCRIP and CDE: Digital Elevation Model (DEM) of Anjeni, Gojam, 2000a.
- SCRIP and CDE: Digital Elevation Model (DEM) of Andit Tid, Shewa, 2000b.
- SCRIP and CDE: Digital Elevation Model (DEM) of Maybar watershed, Wello, 2000c.
- Starks, P. J. and Moriasi, D. N.: Spatial resolution effect of precipitation data on SWAT calibration and performance: implications for CEAP, *American Society of Agricultural and Biological Engineers*, 52, 1171–1180, 2009.
- 505 Stehr, A., Debels, P., and Romero, F.: Hydrological modelling with SWAT under conditions of limited data availability : evaluation of results from a Chilean case study, *Hydrological Sciences Journal*, 53, 588–601, 2008.
- Temesgen, M., Rockström, J., Savenije, H. H. G., Hoogmoed, W. B., and Alemu, D.: Determinants of tillage frequency among smallholder farmers in two semi-arid areas in Ethiopia, *Physics and Chemistry of the Earth*, 33, 183–191, doi:10.1016/j.pce.2007.04.012, 2008.
- Tibebe, D. and Bewket, W.: Surface runoff and soil erosion estimation using the SWAT model in the Keleta Watershed, Ethiopia, *Land Degradation & Development*, 22, 551–564, doi:10.1002/ldr.1034, 2011.
- USDA-SCS: Design Hydrographs, in: *National Engineering Handbook*, chap. 1-22, p. 824, USDA Soil Conservation Service, Washington D.C., Washington D.C., <http://www.nrcs.usda.gov/wps/portal/nrcs/detailfull/national/water/?cid=stelprdb1043063>, 1972.
- 515 Wagner, P. D., Fiener, P., Wilken, F., Kumar, S., and Schneider, K.: Comparison and evaluation of spatial interpolation schemes for daily rainfall in data scarce regions, *Journal of Hydrology*, 464-465, 388–400, doi:10.1016/j.jhydrol.2012.07.026, 2012.

- 520 Weigel, G.: The Soils of the Maybar Area, Wello Research Unit, Ethiopia, University of Bern, Switzerland,
Bern, research r edn., 1986.
- Williams, J. R.: Flood routing with variable travel time or variable storage coefficients, *Transactions of the ASABE*, 12, 100–103, 1969.
- Williams, J. R.: SPNM, a model for predicting sediment, phosphorus, and nitrogen yields from agricultural
525 basins, *Water Resources Bulletin*, 16, 843–848, 1980.
- Worqlul, A. W., Maathuis, B., Adem, A. A., Demissie, S. S., Langan, S., and Steenhuis, T. S.: Comparison
of TRMM, MPEM and CFSR rainfall estimation with the ground observed data for the Lake Tana Basin,
Ethiopia, *Hydrology and Earth System Sciences Discussions*, 11, 8013–8038, doi:10.5194/hessd-11-8013-
2014, <http://www.hydrol-earth-syst-sci-discuss.net/11/8013/2014/>, 2014.
- 530 Yang, Y., Wang, G., Wang, L., Yu, J., and Xu, Z.: Evaluation of Gridded Precipitation Data for
Driving SWAT Model in Area Upstream of Three Gorges Reservoir, *PLoS ONE*, 9, e112725,
doi:10.1371/journal.pone.0112725, 2014.
- Yu, M., Chen, X., Li, L., Bao, A., and Paix, M. J. D. L.: Streamflow Simulation by SWAT Using Different
Precipitation Sources in Large Arid Basins with Scarce Raingauges, *Water Resources Management*, 25,
535 2669–2681, doi:10.1007/s11269-011-9832-z, 2011.
- Zelege, G.: Landscape Dynamics and Soil Erosion Process Modeling in the North-Western Ethiopian High-
lands., Phd thesis, University of Bern, Switzerland, 2000.