

1 **How effective is river restoration in re-establishing**
2 **groundwater – surface water interactions? - A case study**

3

4 **A-M. Kurth^{1,2}, C. Weber³, M. Schirmer^{1,2}**

5 [1] {Department of Water Resources and Drinking Water, Eawag, Swiss Federal Institute of
6 Aquatic Science and Technology, Überlandstrasse 133, 8600 Dübendorf, Switzerland}

7 [2] {The Centre of Hydrogeology and Geothermics (CHYN), University of Neuchâtel, Rue
8 Emil-Argand 11, 2000 Neuchâtel, Switzerland}

9 [3] {Department of Surface Waters, Eawag, Swiss Federal Institute of Aquatic Science and
10 Technology, Seestrasse 79, 6047 Kastanienbaum, Switzerland}

11 Correspondence to: A-M. Kurth (anne-marie.kurth@eawag.ch)

1 **Abstract**

2 In this study, we investigated whether river restoration was successful in re-establishing
3 groundwater-surface water interactions in a degraded urban stream. Restoration measures
4 included morphological changes to the river bed, such as the installation of gravel islands and
5 spur dykes, as well as the planting of site specific riparian vegetation. Standard Distributed
6 Temperature Sensing (DTS) and novel active and passive DTS approaches were employed to
7 study groundwater-surface water interactions in two reference streams and an experimental
8 reach of an urban stream before and after its restoration. Radon-222 analyses were utilised to
9 validate the losing stream conditions of the urban stream in the experimental reach. Our
10 results indicated that river restoration at the study site was indeed successful in increasing
11 groundwater-surface water interactions. Increased surface water downwelling occurred locally
12 at the tip of a gravel island created during river restoration. Hence, the installation of in-
13 stream structures increased the vertical connectivity and, thus, groundwater-surface water
14 interactions. With the methods presented in this publication it would be possible to routinely
15 investigate the success of river restorations in re-establishing vertical connectivity, thereby
16 gaining insight into the effectiveness of specific restoration measures. This, in turn, would
17 enable the optimization of future river restoration projects, rendering them more cost-effective
18 and successful.

1 Introduction

2 In recent years, significant efforts have been taken worldwide to restore degraded rivers and
3 streams (Filoso and Palmer 2011; Gilvear et al. 2012; Haase et al. 2013) in order to protect
4 ecosystem health, incorporate sustainable flood protection, and preserve valuable water
5 resources (Andrea et al. 2012; Palmer et al. 2005; Wortley et al. 2013).

6 The aim of river restoration is often stated as achieving the highest possible ecological status
7 or re-establishing the natural function of streams to a pre-degraded state (EU WFD 2000;
8 Land and Water Australia 2009; Swiss Water Protection Act 814.20). **This includes the
9 recreation of a natural river morphology and the provision of habitats for native flora and
10 fauna, while maintaining groundwater-surface water interactions.**

11 **The latter, in particular, is of paramount importance with regard to the natural functioning of
12 streams: the interaction between groundwater and surface water controls the availability of
13 nutrients in the hyporheic zone (Fuller and Harvey 2000; Gooseff et al. 2002; Butturini et al.
14 2003), impacts water temperature (Bencala 2005; Hannah et al. 2009; Norman and Cardenas
15 2014) and quality (Boulton et al. 1998; Findlay 1995; Fuller and Harvey 2000; Trauth et al.
16 2015), and, thus, influences ecosystem functioning (Boulton et al. 1998; Malard et al. 2002;
17 Thorp et al. 2006) and health (Wondzell 2011).**

18 **Many river restoration efforts focus on the re-establishment of longitudinal and lateral
19 connectivity and appearance, rather than vertical connectivity (Mendonzo 2008; Filoso and
20 Palmer 2011; Sudduth et al. 2011; Kurth and Schirmer 2014), a fact that might explain the
21 often cited failure of river restoration with respect to ecosystem functioning (Louhi et al.
22 2011; Sudduth et al. 2011; Violin et al. 2011).** Clearly, it is not sufficient to change the
23 appearance of a short stretch of a stream to restore the complex interplay of riverine
24 ecosystems and their surroundings. Hence, more and more projects take a more holistic
25 approach to river restoration (Kurth and Schirmer 2014).

26 The success of these river restorations may be evaluated with respect to abiotic parameters,
27 such as hydromorphological characteristics, biotic parameters, such as biodiversity, or
28 socioeconomic aspects, e.g. the recreational value (Jähnig et al. 2011). Most river restoration
29 success evaluations, however, seem to focus on biotic parameters (Wortley et al. 2013).
30 Reports regarding the success in re-establishing the vertical connectivity in streams could not
31 be found.

32 We were therefore interested in evaluating the hydrogeological success of a restoration
33 project which had been planned by a multidisciplinary team of biologists, chemists, civil
34 engineers, ecologists, hydraulic engineers, hydrogeologists, physicists, and social scientists.

1 We define hydrogeological success as an increase in vertical connectivity along the restored
2 reach of the stream. This will be indicated by an increase in groundwater-surface water
3 interactions, provided that groundwater and surface water were connected prior to
4 anthropogenic interference. Ideally, a spatial variability in high and low exchange rates will
5 be reached for the benefit of the aquatic ecosystems.

6 In this paper we discuss the results gained from investigations with Distributed Temperature
7 Sensing (DTS), a fibre-optical method for temperature measurements along a glass fibre
8 (Kurth et al. 2013; Selker et al. 2006 a, b). Fibre-optic cables were either installed directly on
9 top or in ca. 0.4 m depths of the streambed. This enabled us to determine the groundwater-
10 surface water interactions under gaining and losing stream conditions. Additionally,
11 hydrogeological conditions were investigated in the vicinity of the restored stream reach, and
12 losing stream conditions verified with Radon-222 analyses. Apart from investigating a stream
13 before and after its restoration, experiments were performed in natural and near-natural
14 reference streams. “Natural” and “near-natural” thereby refer to the condition of the stream
15 bed as being unaffected or only mildly affected by anthropogenic alterations. Thus, we tested
16 the hypothesis that the vertical connectivity, and therefore groundwater-surface water
17 interactions, indeed improve after river restoration. We conclude with an outlook on the
18 application of the described DTS measurement approach and recommendations for restoration
19 practise based on our insights.

20

21 **2 Material and Methods**

22 **2.1 Study sites**

23 In our study we evaluated three perennial Swiss streams: the Chriesbach, the Röthenbach and
24 the Urbach (Fig. 1). Apart from similarities in their dimensions and discharge, they vary in
25 their state of morphological degradation: while the Urbach is a natural alpine stream, the
26 Röthenbach and the Chriesbach are mildly to severely degraded streams of the Swiss Plateau
27 in rural and urban areas, respectively. The Urbach and the Röthenbach, thereby, are reference
28 streams to evaluate whether the restoration of the Chriesbach recreated conditions resembling
29 either a natural or a near-natural stream. ‘Natural’ and ‘near-natural’ thereby refers to the
30 streams’ morphology and the groundwater-surface water interactions. Both parameters were
31 tested prior to site selection following guidelines by the Swiss Federal Office for the

1 Environment and by manually evaluating the temperature distribution in the streams,
2 respectively.

3 Flowing between gentle-sloped meadows and steep rock walls, the Urbach is a braided stream
4 with various main and side channels and in-stream islands (Doering et al. 2012). In spite of
5 upstream hydropower production and the installation of stone crib walls as flood protection
6 measures in the meadows, the Urbach has maintained its natural river morphology due to the
7 extensive intermediate catchment between study site and the retaining lake of the hydropower
8 production plant. Hence, it was selected as a reference for presumably natural groundwater-
9 surface water interactions.

10 Although having been lowered and straightened led to a rather uniform stream width, the
11 Röthenbach still has a naturally varying water depth and flow velocities. The stream is
12 impacted by diffuse manure inflow into the stream, by discharge of warm water from power
13 production in a nearby sawmill and by a significant drawdown due to water abstraction in the
14 surrounding areas in summer. Nevertheless, due to initial investigations of the water
15 temperature distribution in the stream, groundwater-surface water interactions in the
16 Röthenbach were assumed to be near-natural in winter.

17 Originally a meandering stream, the Chriesbach was lowered and channelized in the 1910s
18 and 1970s, leading to a loss of in-stream structures and habitats, and causing severe
19 degradation. Hence, between 2006 and 2014, 900 m of the Chriesbach were restored: the
20 channel was widened, shores levelled, and water depth and width varied (Fig. 2). In-stream
21 islands and ponds were created and a site-specific riparian vegetation planted. Even though
22 these measures hardly reverse the severe effect of channelization and lowering, the
23 Chriesbach now has a more natural river morphology. The study site of the Chriesbach
24 investigated in this study was restored in the autumn and winter of 2013/2014.

25 **2.2 Water temperature measurements with Distributed Temperature Sensing** 26 **(DTS)**

27 Raman-based DTS is a fibre-optic method for temperature measurements along a glass fibre
28 into which laser light pulses are injected (Selker et al. 2006 a; Tyler et al. 2009). Inside the
29 glass fibre, the laser light's photons are backscattered either inelastically or elastically, i.e.
30 with or without a change in their energy, depending on the temperature-sensitive energy level
31 of the glass molecules with which the photons interact. The DTS instrument then analyses the
32 energy and the time of arrival of the elastically and inelastically backscattered photons, the so
33 called Stokes and Anti-Stokes signal, and calculates the temperature for each section, e.g.

1 every meter, of the glass fibre. Thus, the temperature of the entire length of the glass fibre is
2 measured simultaneously. Careful calibration of the DTS instrument with reference baths
3 thereby improves the accuracy of the measurement. It is generally assumed that the
4 temperature of the fibre-optic cable equals the surrounding temperature (Tyler et al. 2009),
5 e.g. the surface water temperature.

6 DTS technology is very convenient in hydrogeology, as the temperature of long stretches of
7 streams can be determined simultaneously or groundwater upwelling into streams can be
8 monitored due to differences in their temperatures (Anderson 2005; Briggs et al. 2012; Tyler
9 et al. 2009). DTS measurements may be performed as passive and active measurements.
10 Passive measurements are standard temperature measurements along the glass fibre (Steele-
11 Dunne et al. 2010). In active measurements, on the other hand, the metal components of the
12 fibre-optic cable, e.g. copper or steel wires, are heated by applying an electrical current
13 through them (Read et al. 2014). This allows retrieving information on the cooling behaviour
14 of the fibre-optic cable, indicating areas with lower or higher rates of water flow over the
15 cable. Both active and passive DTS measurements were employed in this study.

16 **2.3 Radon-222 measurements**

17 Radon-222 is a product of the decay of Radium-226 in the decay chain of Uranium-238 to
18 Lead-206. As decaying Uranium-238 is present in the subsurface, groundwater is generally
19 enriched in Radon-222. Surface water, on the other hand, has lower Radon-222 levels due to
20 rapid degassing of Radon-222. Hence, Radon-222 is an ideal tracer for groundwater
21 upwelling in surface waters (e.g. Cartwright et al. 2014; Cook 2013; Hoehn et al. 1992). A
22 detailed description of the experimental set-up is described in the experimental section.

23 **2.4 Experimental set-up in the field**

24 DTS measurements were performed with an Agilent DTS N4386A and a Sensornet Oryx®
25 DTS, with a sampling interval of 1 m, and a spatial resolution of 1.5 m, respectively. Both
26 instruments were calibrated with the same procedure, including constantly stirred ice bath and
27 a hot water baths and dispersion, slope and offset corrections. Additionally, post-measurement
28 drift- and offset correction were applied. We employed a heatable multimode BRUsens fibre-
29 optic cable (BRUGG AG, Switzerland) with copper and steel wires for heatability. As it was
30 impossible to maintain a temperature reference bath in the field, a 200 m section of the cable
31 exposed to air was used as reference and the cable temperature determined with Hobo
32 TidbiTs® temperature probes. Two additional temperature probes were installed in the water

1 at the beginning and the end of the fibre-optic cable submerged in the streams. **Hobo**
2 **TidbiTs® measurement intervals were matched to the DTS measurement integration time, i.e.**
3 **3 or 15 minutes.** Measurements were performed on days with low flow and no precipitation,
4 on the coldest days in winter (Chriesbach, Röthenbach) and a moderately warm day in
5 summer (Urbach). DTS measurements at the Urbach could not be performed in winter, as the
6 valley is closed during winter due to an elevated risk of avalanches.

7 **All measurements in the Urbach and the Röthenbach were passive measurements. At the**
8 **Chriesbach site measurements were passive before (2013) and after restoration (2014), and**
9 **active after restoration (2014).** For passive measurements at the Urbach, the Röthenbach and
10 the Chriesbach prior to its restoration, the fibre-optic cables were fixed on the streambed; for
11 passive (P) and active (A) measurements at the Chriesbach after restoration the fibre-optic
12 cable was buried (B) with a plough at a depth of about 0.4 m within the streambed (PAB
13 approach) (Fig. 3). The PAB approach is a new method for the detection of groundwater-
14 surface water interactions in losing stream conditions (Kurth 2015). The periodic heating of
15 the buried fibre-optic cable provides an insight into the spatial distribution of surface water
16 infiltration into and groundwater exfiltration out of the stream bed. These measurements could
17 not be performed prior to restoration, as the inserted fibre-optic cable would have been
18 damaged by the mechanical diggers remodelling the streambed during river restoration.

19 **During active measurements, the metal components of the fibre-optic cable were heated with**
20 **a current of 10 A (2.48 W/m) for 30 minutes twice a day. The cooling rate of the fibre-optic**
21 **cable was calculated as a temperature change per minute. To avoid possible correlations**
22 **between the temperature of the fibre-optic cable and the cooling rate of the fibre-optic cable in**
23 **a way that warmer sections of the cable heat up more strongly, the cooling rate was**
24 **investigated in the temperature range of 15.9 °C to 16.1 °C in steps of 0.1 °C. This**
25 **temperature range was selected as it had the highest number of measurement points.**

26 **Measurements in the Urbach were performed with the fibre-optic cable being passed through**
27 **three areas: a side channel (cable sections 140 m to 188 m), a drainage ditch draining the**
28 **surrounding meadows (cable sections 194 m to 266 m), and the main channel of the Urbach**
29 **(cable sections 269 m to 327 m) (Fig. 4). The drainage ditch was measured to provide insight**
30 **into the local groundwater temperature, as it was assumed that it was mainly fed by**
31 **groundwater that day.**

32 **At the Chriesbach site, groundwater temperature and the groundwater level were measured**
33 **every 15 minutes with an temperature logger (STS Switzerland®) situated in around 3 m**
34 **depth of a piezometer situated next to the investigated reach of the stream (Fig. 3).**

1 Radon-222 measurements for the detection of groundwater inflow into the Chriesbach were
2 performed after river restoration with a RAD7 instrument (Niton-Durridge, USA). Water
3 samples were taken shortly before analysis from surface water and groundwater at the
4 restored site and from an unrestored reference site further upstream. Groundwater samples
5 were also taken from piezometers at the restored site with a Gardena® jet pump with a
6 pumping rate of 0.9 L/s. The piezometers were flushed for 15 minutes and water samples
7 taken from 6 m depths. Samples were taken early in the morning to prevent warming and
8 degassing of the samples in the tubing. The tubing was checked for bubble formation prior to
9 sampling. All sample bottles were triple-washed and samples taken without air inclusion.
10 Comparative measurements with the Urbach and Röthenbach sites were not possible due to
11 unavailability of the Radon-222 detector.

12

13 **3 Results**

14 **3.1 Passive DTS water temperature measurements**

15 The surface water temperature profile of the Chriesbach was investigated before (Fig. 5) and
16 after river restoration (Fig. 6). Hereby, the term temperature profile describes the longitudinal
17 temperature distribution along the investigated section of the stream. During the data
18 collection before river restoration, the air temperature varied between -5.3 °C and 8.8 °C (Fig.
19 5, left side). The surface water temperature (Fig. 5, right side) closely followed the air
20 temperature, varying between 6.4 °C and 9.9 °C. Groundwater temperatures ranged between
21 11.3 °C and 11.4 °C during the investigated period. Apart from two cable sections with
22 elevated surface water temperatures at 372 m and 379 m, the surface water temperature
23 distribution in the Chriesbach was relatively uniform, decreasing after sun set and increasing
24 again in the morning.

25 The data collected after the restoration of the Chriesbach appeared to be rather different (Fig.
26 6). Here, air temperatures varied between 0.5 °C and 4.9 °C and surface water temperatures
27 ranged between 8.6 °C and 10.3 °C. The surface water temperature reached its minimum and
28 maximum in the morning and afternoon, respectively. However, the pattern is less distinct
29 than in the pre-restoration data set. Surface water temperature anomalies were to be found
30 around cable sections 299 m, 357 m, 372 m, and 478 m.

31 The surface water temperature data from the Urbach, the natural reference site, was very
32 diverse (Fig. 7). The air temperature ranged between 18.6 °C in the late morning and 23.6 °C

1 in the afternoon. The surface water temperature in the side channel (cable sections 140 m to
2 188 m) closely followed the air temperature, ranging between 9.4 °C and 12.3 °C, as the fibre-
3 optic cable was installed in a shallow part of the stream, which was exposed to the sun
4 throughout the measurement. Surface water temperatures in the drainage ditch (cable sections
5 194 m to 266 m) ranged between 7.8 °C in the late afternoon and 10.6 °C around noon.
6 Thereby, the 7.8 °C are assumed to represent the groundwater temperature in that area. The
7 drainage ditch was partially exposed to sunlight between the morning and the early afternoon
8 and completely shaded afterwards. The higher temperatures at cable section 247 m at the
9 beginning of the measurement were caused by the fibre-optic cable being exposed to air. The
10 surface water in the main channel (cable sections 269 m to 327 m) had water temperatures
11 similar to the drainage ditch, ranging from 9.0 °C in the morning to 10.7 °C in the early
12 afternoon. The stream was completely exposed to sunlight throughout the measurement
13 period.

14 **The data from the near-natural reference site, the Röthenbach (Fig. 8), differed strongly from**
15 **the previously seen natural reference of the Urbach.** Air temperatures ranged between -4.5 °C
16 and 13.1 °C. Surface water temperatures closely followed the diurnal variations in air
17 temperature, with the surface water temperature ranging from 1.2 °C in the morning to a
18 maximum of 7.6 °C. However, this maximum water temperature occurred exclusively around
19 cable section 199 m and was constant throughout the measurement period. Around cable
20 section 273 m the surface water temperature was elevated as well, but less pronounced and
21 not as constant as around cable section 199 m. With the exception of these two sections, the
22 surface water temperature in the Röthenbach was very uniform. It decreased after sun-set and
23 increased around noon, following the air temperature with a delay of a few hours. This delay
24 was due to the Röthenbach being in shadow until noon.

25 **3.2 Active and passive DTS measurements with the buried fibre-optic cable**

26 **During passive (P) and active (A) DTS data acquisition with the buried (B) fibre-optic cable**
27 **(PAB approach), surface water temperatures varied between 14.3 °C and 19.2 °C (Fig. 9).** The
28 streambed temperatures, on the other hand, varied more strongly, ranging between 14.3 °C
29 and 29.6 °C. The streambed temperature distribution, however, was not uniform. Maximum
30 streambed temperatures occurred around cable sections 205 m and 240 m. Elevated and
31 minimum streambed temperatures appeared around cable sections 45 m, 135 m and 143 m,
32 but also, less pronounced, around cable sections 60 m, 70 m, 79 m and 180 m. In the other
33 sections of the fibre-optic cable, streambed temperatures changed less throughout the day and

1 night, varying only slightly between 15.4 °C and 16.5 °C, except during periods in which the
2 fibre-optic cable was heated. The heating of the fibre-optic cable caused a rise in cable
3 temperatures of between 1.3 °C and 1.6 K, depending on the initial temperature of the cable.
4 In the section of maximum streambed temperatures, heating was more rapid and led to a
5 slightly higher temperature difference (ΔT 1.6 °C), than in the other sections (ΔT 1.3 °C). The
6 lowest cooling rate was seen at cable sections 111 m (Fig. 10) in a shallow part of the stream
7 with stagnant water, the highest cooling rate was seen at cable section 195 m at the tip of a
8 gravel island. About 80 % of cooling rates ranged between 0.082 °C/min and 0.086 °C/min.

9 **3.3 Radon-222 measurements**

10 The Radon-222 activity in the surface water samples of the Chriesbach, obtained after its
11 restoration, was very low (Table 1). Radon-222 activities in the Chriesbach ranged between 0
12 Bqm⁻³ and 1103 Bqm⁻³. In the nearby piezometers Radon-222 activities were significantly
13 higher with values ranging between 3482 Bqm⁻³ and 5037 Bqm⁻³. Sample 5.1 had the highest
14 Radon-222 activity of all surface water samples. However, this result could not be verified in
15 a second sampling campaign. The Radon-222 activity in the groundwater samples was
16 significantly higher than in the surface water samples, and increased with increasing distance
17 from the stream.

18

19 **4 Discussion**

20 In this study we investigated whether river restoration in an urban setting indeed enhanced the
21 vertical connectivity in the stream and, thus, created conditions in which the ecosystem can,
22 under given conditions, unfold its full potential.

23 The surface water temperature profile of the unrestored Chriesbach was very uniform along
24 the investigated section of the stream. However, there were two cable sections at 372 m and
25 379 m with slightly elevated surface water temperatures. The purple line visible after 3 pm on
26 14 March 2013, around cable section 372 m (Fig. 5), was caused by a sharp bend in the cable,
27 a defect that was visible in the post-restoration data as well (Fig. 6). The slightly elevated
28 surface water temperatures around cable section 379 m (Fig. 5) were due to algae and debris
29 accumulating at this section of the fibre-optic cable, possibly acting as a temperature buffer.
30 These effects are always localised and are either detected during regular cable checks or, at
31 the latest, during removal of the fibre-optic cable.

1 A similarly uniform surface water temperature profile was seen in the Urbach. The drainage
2 ditch was groundwater-fed on the day of the experiment. The surface water temperature
3 profile in the main channel was very similar to the drainage ditch, indicating that the main
4 channel was mainly groundwater-fed in the investigated section of the stream. The slightly
5 elevated surface water temperatures in the main channel were caused by the channel being
6 fully exposed to the sunlight throughout the experiment, while the drainage ditch was shaded
7 in the afternoon. Robinson and Doering (2013) observed a similar pattern of groundwater
8 upwelling in the investigated section of the Urbach's main channel and groundwater-fed
9 tributaries on the eastern side of the stream. Presumably groundwater upwelling occurred
10 uniformly and on a large scale, as no localised regions of groundwater temperatures were
11 observed in the main channel or the drainage ditch.

12 Localized groundwater upwelling, however, was observed in the Röthenbach. Here,
13 groundwater upwelling occurred in discrete zones, in which surface water temperatures were
14 constant or elevated throughout the experiment. In the zones with constant surface water
15 temperatures, significant amounts of groundwater were infiltrating into the stream. Similar
16 observations were made e.g. by Unland et al. (2013). In this context, *significant* means a
17 groundwater inflow rate sufficient to maintain surface water temperature at a constant value
18 equalling the groundwater temperature. In the zones with elevated surface water temperatures,
19 groundwater was infiltrating, albeit not in significant volumes.

20 **In case of the Chriesbach, the results indicate that there was no groundwater upwelling in the**
21 **investigated section of the stream, as the surface water temperature of the Chriesbach was ca.**
22 **2 K below the groundwater temperature and strongly varied with the daily temperature**
23 **fluctuations.** The surface water temperature profile of the Chriesbach after restoration was
24 equally uniform in space as prior to its restoration, with four exceptions. The lower surface
25 water temperatures around cable section 372 m were caused by the defect in the fibre-optic
26 cable already seen in the data of the unrestored Chriesbach. The surface water temperature
27 anomalies around cable sections 299 m and 478 m were due to the fibre-optic cable being
28 exposed to the air. The lower surface water temperatures around cable section 357 m, on the
29 other hand, were induced by the fibre-optic cable resting in a section of the stream with
30 stagnant and very shallow water, which cooled down more rapidly than the rest of the stream.
31 Apart from these anomalies, the surface water temperature profile was very uniform in space.
32 However, it was very uniform in time as well. There are several explanations for this
33 behaviour: either the amount of groundwater infiltrating from further upstream increased due
34 to river restoration or the significantly lower variation in air temperature (14.1 °C before

1 restoration, 4.4 °C after restoration) induced a much smaller change in the surface water
2 temperature. Hydrogeological investigations at that time indicated that the Chriesbach was a
3 losing stream in the investigated section, which confirmed that the homogenous surface water
4 temperature profile was caused by the lower air temperature variations.

5 Radon-222 measurements in the restored Chriesbach and an unrestored reference section of
6 the Chriesbach further upstream confirmed the losing conditions of the Chriesbach in the
7 investigated section and indicated that no groundwater upwelling occurred upstream either.

8 The active DTS data with the fibre-optic cable buried at about 0.4 m depth indicated that most
9 surface water downwelling occurred at cable section 195 m, the tip of a gravel island newly
10 created during restoration of the Chriesbach. Research by Shope et al. (2012) confirm this
11 observation. The lowest downwelling was seen at cable section 111 m, a section of the cable
12 buried in a shallow pool of stagnant water at the side of the stream. Cooling rates in the other
13 cable sections were rather uniform, which might be explained by the homogeneous sediment
14 composition and a lack of in-stream structures in these stream sections. **As the fibre-optic
15 cable was only inserted in one of the gravel islands no conclusions may be drawn as to the
16 surface water downwelling in the other gravel islands.**

17

18 **5 Conclusions**

19 **Success evaluations in river restoration are increasingly being employed to test whether
20 restoration measures were successful in improving conditions for the ecosystem.
21 Hydrogeological success, which influences ecological success as well, however, is not
22 routinely investigated. We therefore examined hydrogeological success, i.e. groundwater-
23 surface water interactions, before and after the restoration of an urban stream and compared
24 results to streams in natural and near-natural conditions. Results indicated that in the
25 Chriesbach, groundwater-surface water interactions after restoration increased due to the
26 installation of gravel islands. Additional analyses of the data in the future may allow estimates
27 of the actual flux sizes of surface water downwelling into the gravel islands.**

28 Future research should focus on investigating, amongst others, the hydrogeological success of
29 river restorations. Suitable methods for investigating the hydrogeological success in gaining
30 and losing conditions is the PAB approach which applies passive (P) and active (A)
31 Distributed Temperature Sensing (DTS) to a buried (B) fibre-optic cable. Admittedly, it
32 would be impossible to install a fibre-optic cable in or on the streambed of every restored
33 stream. However, an installation in the streambed would only be necessary under losing

1 conditions; in gaining streams a simple installation on the streambed would suffice. These
2 methods could then be employed only in selected case studies to help elucidate which
3 restoration measures improved hydrogeological conditions and under which circumstances. In
4 this way, future restoration projects could be optimized towards cost-effectiveness and
5 efficiency in re-establishing vertical connectivity, which would help to increase the overall
6 effectiveness of river restorations.

1 **Author contribution**

2 A-M. K. designed and performed the experiments; there was a continuous discussion about
3 the contents with C. W. and M. S. A-M. K. prepared the manuscript with contributions from
4 all authors.

1 **Acknowledgements**

2 This work was funded by the Competence Centre Environment and Sustainability (CCES) of
3 the ETH domain in the framework of the Restored Corridor Dynamics (RECORD) project,
4 the follow-up project RECORD Catchment, Swiss Experiment, and AQUALINK
5 International Leibniz Graduate School. The authors wish to thank Hannah Cloke for the
6 editing and Stefan Krause, Nick van de Giesen, Marc Walther and the anonymous referee for
7 their assistance in improving the manuscript.

1 **References**

- 2 ANDERSON, M.P., 2005. Heat as Ground Water Tracer. *Ground Water*, 43(6), 951 – 968. doi:
3 10.1111/j.1745-6584.2005.00052.x
- 4 ANDREA, F., GSCHÖPF, C., BLASCHKE, A.P., WEIGELHOFER, G., RECKENDORFER, W., 2012.
5 Ecological niche models for the evaluation of management options in urban floodplain –
6 conservation vs. restoration purposes. *Environ. Sci. Policy*, 34, 79 – 91. doi:
7 10.1016/j.envsci.2012.08.011
- 8 BENCALA, K.E., 2005. Hyporheic exchange flows, in Anderson, M., ed. *Encyclopedia of*
9 *Hydrological Sciences*, v.3. , part 10, chapter 113: New Jersey, John Wiley and Sons, p. 1733
10 – 1740.
- 11 BOULTON, A.J., FINDLAY, S., MARMONIER, P., STANLEY, E.H., AND VALETT, H.M., 1998. The
12 functional significance of the hyporheic zone in streams and rivers. *Annual Review of*
13 *Ecology and Systematics*, 29(1), 59 – 81. doi: 10.1146/ANNUREV.ECOLSYS.29.1.59
- 14 BRIGGS, M.A., LAUTZ, L.K., MCKENZIE, J.M., GORDON, R.P., AND HARE, D.K., 2012. Using
15 high-resolution distributed temperature sensing to quantify spatial and temporal variability in
16 vertical hyporheic flux. *Water Resour Res*, 48(2), W02527. doi:10.1029/2011WR011227
- 17 BUTTURINI, A., BERNAL, S., HELLIN, C., NIN, E., RIVERO, L., SABATER, S., AND SABATER, F.,
18 2003. Influences of the stream groundwater hydrology on nitrate concentration in unsaturated
19 riparian area bounded by an intermittent Mediterranean stream. *Water Resour Res*, 39(4),
20 1110 – 1123. doi: 10.1029/2001WR001260
- 21 CARTWRIGHT, I., HOFMANN, H., GILFEDDER, B., AND SMYTH, B., 2014. Understanding
22 parafluvial exchange and degassing to better quantify groundwater inflows using ²²²Rn: The
23 King River, southeast Australia. *Chemical Geology*, 380, 48 – 60. doi:
24 10.1016/j.chemgeo.2014.04.009
- 25 COOK, P.G., 2013. Estimating groundwater discharge to rivers from river chemistry surveys.
26 *Hydrol. Process.*, 27(25), 3694 – 3707. doi: 10.1002/hyp.9493
- 27 DOERING, M., BLAUROCK, M., AND ROBINSON, C.T., 2012. Landscape transformation of an
28 Alpine floodplain influenced by humans: historical analyses from aerial images. *Hydrol.*
29 *Process.*, 26(22), 3319 – 3326. doi: 10.1002/hyp.8374

1 EUROPEAN COMMISSION, 2000. Directive 2000/60/EC of the European Parliament and of the
2 council of 23 October 2000 establishing a framework for the Community action in the field of
3 water policy. Off. J. Eur. Commun., L327, 22.12.2000

4 FILOSO, S., AND PALMER, M.A., 2011. Assessing stream restoration effectiveness at reducing
5 nitrogen export to downstream waters. *Ecol. Appl.*, 21(6), 1989 – 2006.

6 FINDLAY, S., 1995. Importance of surface-subsurface exchange in stream ecosystems: The
7 hyporheic zone. *Limnol. Oceanogr.*, 40(1), 159 – 164.

8 FULLER, C.C., AND HARVEY, J.W., 2000. Reactive uptake of trace metals in the hyporheic
9 zone of a mining-contaminated stream, Pinal Creek, Arizona. *Environ. Sci. Technol.*, 34(7),
10 1150-1155. doi: 10.1021/es990714d

11 GILVEAR, D.J., CASAS-MULET, R., AND SPRAY, C.J., 2012. Trends and issues in delivery of
12 integrated catchment scale river restoration: lessons learned from a national river restoration
13 survey within Scotland. *River Res. Appl.*, 28(2), 234 – 246. doi: 10.1002/rra.1437

14 GOOSEFF, M.N., MCKNIGHT, D.M., LYONS, W.B., AND BLUM, A.E., 2002. Weathering
15 reactions and hyporheic exchange controls on stream water chemistry in a glacial meltwater
16 stream in McMurdo Dry Valleys. *Water Resour. Res.*, 38(12), 15-1 – 15.17. doi:
17 10.1029/2001WR000834

18 HAASE, P, HERING, D., JÄHNIG, S.C., LORENZ, A.W., AND SUNDERMANN, A., 2013. The impact
19 of hydromorphological restoration on river ecological status: a comparison of fish, benthic
20 invertebrates, and macrophytes. *Hydrobiologia*, 704, 475 – 488. doi: 10.1007/s10750-012-
21 1255-1

22 HANNAH, D.M., MALCOLM, I.A., AND BRADLEY, C., 2009. Seasonal hyporheic temperature
23 dynamics over riffle bedforms. *Hydrol. Process.*, 23, 2178 – 2194. doi: 10.1002/hyp.7256

24 HOEHN, E., VON GUNTEN, H.R., STAUFFER, F., AND DRACOS, T., 1992. Radon-222 as
25 Groundwater Tracer. A Laboratory Study. *Environ. Sci. Technol.*, 26(4), 734 – 738. doi:
26 10.1021/es00028a010

27 JÄHNIG, S.C., LORENZ, W., HERING, D., ANTONS, C., SUNDERMANN, A., JEDICKE, E. AND
28 HAASE, P., 2011. River restoration success: a question of perception. *Ecological Applications*,
29 21(6), 2007 – 2015. doi: 10.1890/10-0618.1

- 1 KURTH, A.-M., 2015. Investigation of Groundwater-Surface Water Interactions with
2 Distributed Temperature Sensing (DTS). Ph.D. thesis, University of Neuchâtel.
- 3 KURTH, A.-M., DAWES, N., SELKER, J., AND SCHIRMER, M., 2013. Autonomous distributed
4 temperature sensing for long-term heated applications in remote areas. *Geosci. Instrum.*
5 *Method. Data Syst.*, 2, 71 – 77. doi: 10.5194/gi-2-71-2013.
- 6 KURTH, A.-M., AND SCHIRMER, M., 2014. Thirty years of river restoration in Switzerland:
7 implemented measures and lessons learned. *Environ. Earth Sci.*, 72(6), 2065 - 2079. doi:
8 10.1007/s12665-014-3115-y
- 9 LOUHI, P., MYKRÄ, H., PAAVOLA, R., HUUSKO, A., VEHANEM, T., MÄKI-PETÄYS, A., AND
10 MUOTKA, T., 2011. Twenty years of stream restoration in Finland: little response by benthic
11 macroinvertebrate communities. *Ecol. Appl.*, 21(6), 1950 – 1961.
- 12 MALARD, F., TOCKNER, K., DOLE-OLIVIER, M.-J., AND WARD, J.V., 2002. A landscape
13 perspective of surface-subsurface hydrological exchanges in river corridors. *Freshwater*
14 *Biology*, 47(4), 621 – 640. doi: 10.1046/j.1365-2427.2002.00906.x
- 15 MAHER, M., NEVILL, J., AND NICHOLS, P., in preparation. Improving the legislative basis for
16 river management in Australia – Stage 2 Report. Land and Water Australia, Canberra.
17 Available online at [http://lwa.gov.au/files/products/national-rivers-](http://lwa.gov.au/files/products/national-rivers-consortium/pn30264/pn30264.pdf)
18 [consortium/pn30264/pn30264.pdf](http://lwa.gov.au/files/products/national-rivers-consortium/pn30264/pn30264.pdf). Accessed 25.09.2014.
- 19 MENDIONDO, E.M., 2008. Challenging issues of urban biodiversity related ecohydrology.
20 *Braz. J. Biol.*, 68(4, Suppl.), 983 – 1002. doi: 10.1590/S1519-69842008000500007
- 21 NORMAN, F.A. AND CARDENAS, M.B., 2014. Heat transport in hyporheic zones due to
22 bedforms: An experimental study. *Water Resour. Res.*, 50, 3568 – 3582. doi:
23 10.1002/2013WR014673
- 24 PALMER, M.A., BERNHARDT, E.S., ALLAN, J.D., LAKE, P.S., ALEXANDER, G., BROOKS, S.,
25 CARR, J., CLAYTON, S., DAHM, C.N., FOLLSTAD, SHAH, J., GALAT, D.L., LOSS, S.G., GOODWIN,
26 P., HART, D.D., HASSETT, B., JENKINSON, R., KONDOLF, G.M., LAVE, R., MEYER, J.L.,
27 O'DONNELL, T.K., PAGANO, L., AND SUDDUTH, E., 2005. Standards for ecologically
28 successful river restoration. *J. Appl. Ecol.*, 42(2), 208 – 217. doi: 10.1111/j.1365-
29 2664.2005.01004.x

1 READ, T., BOUR, O., SELKER, J.S., BENSE, V.F., LE BORGNE, T., HOCHREUTENER, R., AND
2 LAVENANT, N., 2014. Active-Distributed Temperature Sensing to continuously quantify
3 vertical flow in boreholes. *Water Resour. Res.*, 50(5), 3706 – 3713. doi:
4 10.1002/2014WR015273

5 ROBINSON, C.T., AND DOERING, M., 2013. Spatial patterns in macroinvertebrate assemblages
6 in surface-flowing waters of a glacially-influenced floodplain. *Aquat. Sci.*, 75, 373 – 384. doi:
7 10.1007/s00027-012-0283-2

8 SELKER, J.S., THÉVENAZ, L., HUWALD, H., MALLET, A., LUXEMBURG, W., VAN DE GIESEN, N.,
9 STEJSKAL, M., ZEMAN, J., WESTHOFF, M., AND PARLANGE, M.B., 2006a. Distributed fibre-
10 optic temperature sensing for hydrologic systems. *Water Resour. Res.*, 42(12), W12202. doi:
11 10.1029/2006WR005326

12 SELKER, J., VAN DE GIESEN, N., WESTHOFF, M., LUXEMBURG, W., AND PARLANGE, M.B.,
13 2006b. Fibre optics opens window on stream dynamics. *Geophys. Res. Lett.*, 33(24), L24401.
14 doi: 10.1029/2006GL027979

15 SHOPE, C.L., CONSTANTZ, J.E., COOPER, C.A., REEVES, D.M., POHLL, G., AND MCKAY, W.A.,
16 2012. Influence of large fluvial islands, streambed, and stream bank on surface water-
17 groundwater fluxes and water table dynamics. *Water Resour. Res.*, 48, W06512. doi:
18 10.1029/2011WR011564.

19 STEELE-DUNNE, S.C., RUTTEN, M.M., KRZEMINSKA, D.M., HAUSER, M., TYLER, S.W.,
20 SELKER, J., BOGAARD, T.A., AND VAN DE GIESEN, N.C., 2010. Feasibility of soil moisture
21 estimation using passive distributed temperature sensing. *Water Resour. Res.*, 46(3), W03534.
22 doi: 10.1029/2009WR008272

23 SUDDUTH, E.B., HASSETT, B.A., CADA, P., AND BERNHARDT, E.S., 2011. Testing the field of
24 dreams hypothesis: functional responses to urbanization and restoration in stream ecosystems.
25 *Ecol. Appl.*, 21(6), 1972 – 1988.

26 SWISS FEDERAL ACT OF 24 JANUARY 1991 ON THE PROTECTION OF WATERS (SWISS WATER
27 PROTECTION ACT, WPA) 814.20. [online]. http://www.admin.ch/ch/e/rs/c814_20.html.
28 Accessed 17 Jul 2014

- 1 THORP, J.H., THOMS, M.C., AND DELONG, M.D., 2006. The riverine ecosystem synthesis:
2 Biocomplexity in river networks across space and time. *River Res. Appl.*, 22(2), 123 – 147.
3 doi: 10.1002/rra.901
- 4 TRAUTH, N., SCHMIDT, C., VIEWEG, M., OSWALD, S.E., AND FLECKENSTEIN, J.H., 2015.
5 Hydraulic controls of in-stream gravel bar hyporheic exchange and reactions. *Water Resour.*
6 *Res.*, 51. doi: 10.1002/2014WR015857.
- 7 TYLER, S.W., SELKER, J.S., HAUSNER, M.B., HATCH, C.E., TORGERSEN, T., THODAL, C.E., AND
8 SCHLADOW, S.G., 2009. Environmental temperature sensing using Raman spectra DTS fibre-
9 optic methods. *Water Resour. Res.*, 45, W00D23. doi: 10.1029/2008WR007052
- 10 UNLAND, N.P., CARTWRIGHT, I., ANDERSEN, M.S., RAU, G.C., REED, J., GILFEDDER, B.S.,
11 ATKINSON, A.P., AND HOFMANN, H., 2013. Investigating the spatio-temporal variability in
12 groundwater and surface water interactions: a multi-technique approach. *Hydrol. Earth Syst.*
13 *Sci.*, 17, 3437 – 3453. doi: 10.5194/hess-17-3437-2013
- 14 VIOLIN, C.R., CADA, P., SUDDUTH, E.B., HASSETT, B.A., PENROSE, D.L., AND BERNHARDT,
15 E.S., 2011. Effects of urbanization and urban stream restoration on the physical and biological
16 structure of stream ecosystems. *Ecol. Appl.*, 21(6), 1932 – 1949.
- 17 WONDZELL, S., 2011. The role of the hyporheic zone across stream networks. *Hydrol.*
18 *Process.*, 25, 3525 – 3532. doi: 10.1002/hyp.8119
- 19 WORTLEY, L., HERO, J-M., AND HOWES, M., 2013. Evaluating ecological restoration success: a
20 review of the literature. *Restor. Ecol.*, 21(5), 537 – 543. doi: 10.1111/rec.12028

1 **Appendix A**

2 Table A1

3

4 Table 1. Radon-222 activities in Bq/m³ in groundwater and surface water samples from the
5 Chriesbach. Samples 4.2 and 5.2 are replicates of samples 4.1 and 5.1, taken 39 days after the
6 first sampling event.

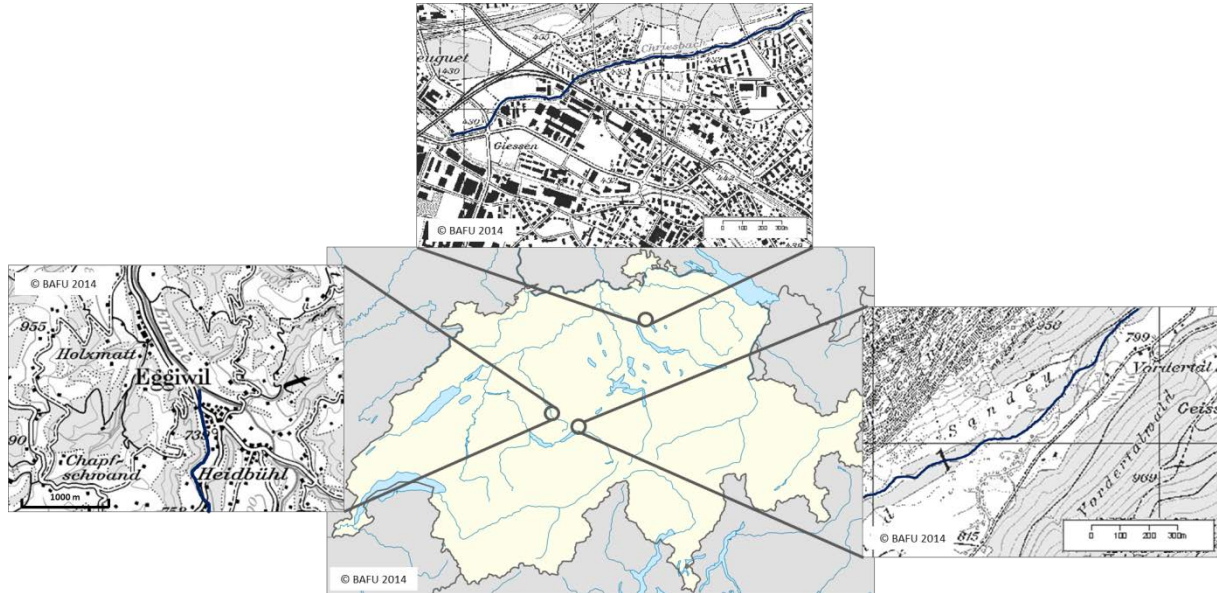
#	sample location	type	Radon-222 activity [Bq/m ³]
1	restored section, close to stream	groundwater	3482 +/- 627
2	restored section, close to piezometers	surface water	517 +/- 246
3	restored section, 2.5 m away from stream	groundwater	5037 +/- 563
4.1	restored section, 0.4 km upstream of investigated area	surface water	411 +/- 169
4.2			90 +/- 104
5.1	unrestored section, ca. 0.5 km upstream of investigated section	surface water	1103 +/- 243
5.2			47 +/- 94
6	unrestored section, ca. 0.55 km upstream of investigated section	surface water	0 +/- 0

7

1 **Appendix B**

2 Fig B1

3



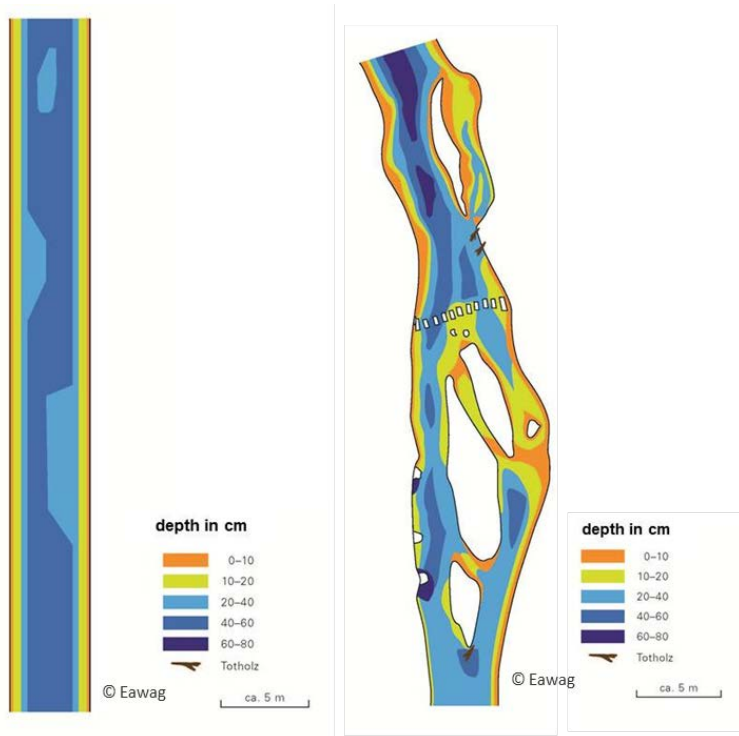
4

5 Figure 1. Locations of the Chriesbach (top), the Röthenbach (left) and the Urbach (right) in

6 Switzerland.

1 Fig B2

2

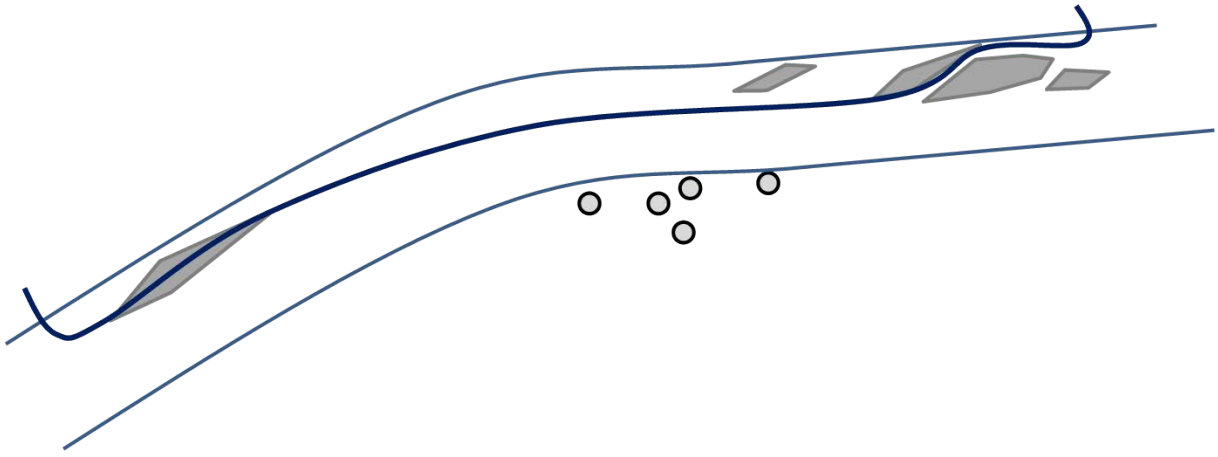


3

4 Figure 2. Stream morphology of the Chriesbach before and after river restoration © Eawag.

1 Fig B3

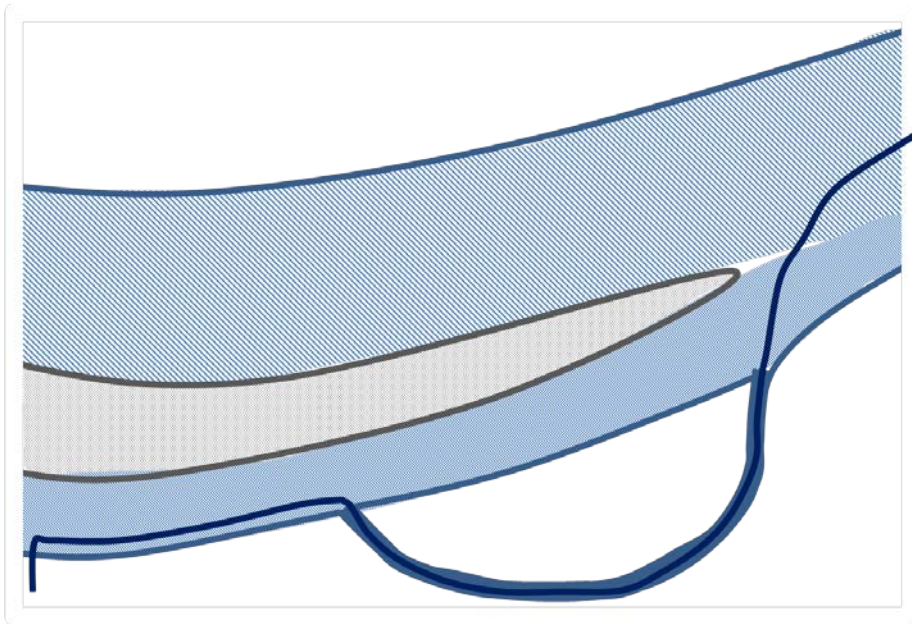
2



3

4 Figure 3. Overview over the study reach of the restored Chriesbach. The light blue lines
5 delineate the Chriesbach, albeit without following the exact contour of the shoreline. The light
6 grey structures represent in-stream gravel islands, the circles piezometers. The dark blue line
7 shows the approximate position of the fibre-optic cable.

1 Fig B4

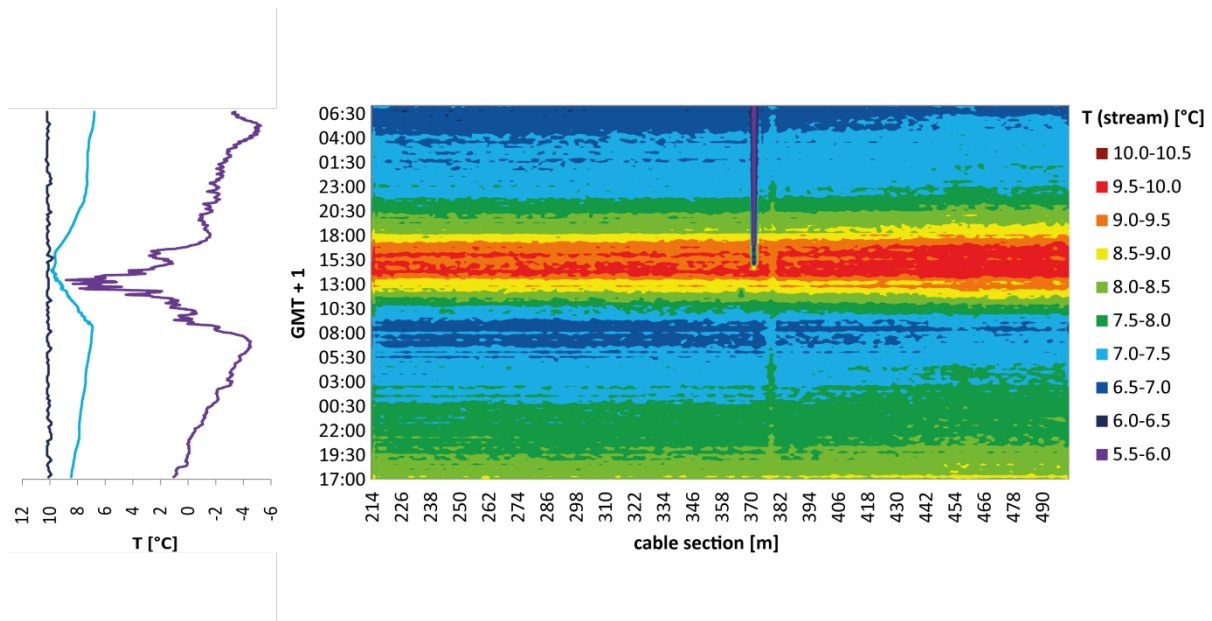


2

3 Figure 4. Overview over the study reach of the Urbach. The wider spaced blue shading
4 represents the main channel, the tighter shading the side channel and the full blue colour the
5 drainage ditch. The grey-shaded area delineates the in-stream island between main and side
6 channel, the dark blue line the approximate position of the fibre-optic cable.

1 Fig B5

2

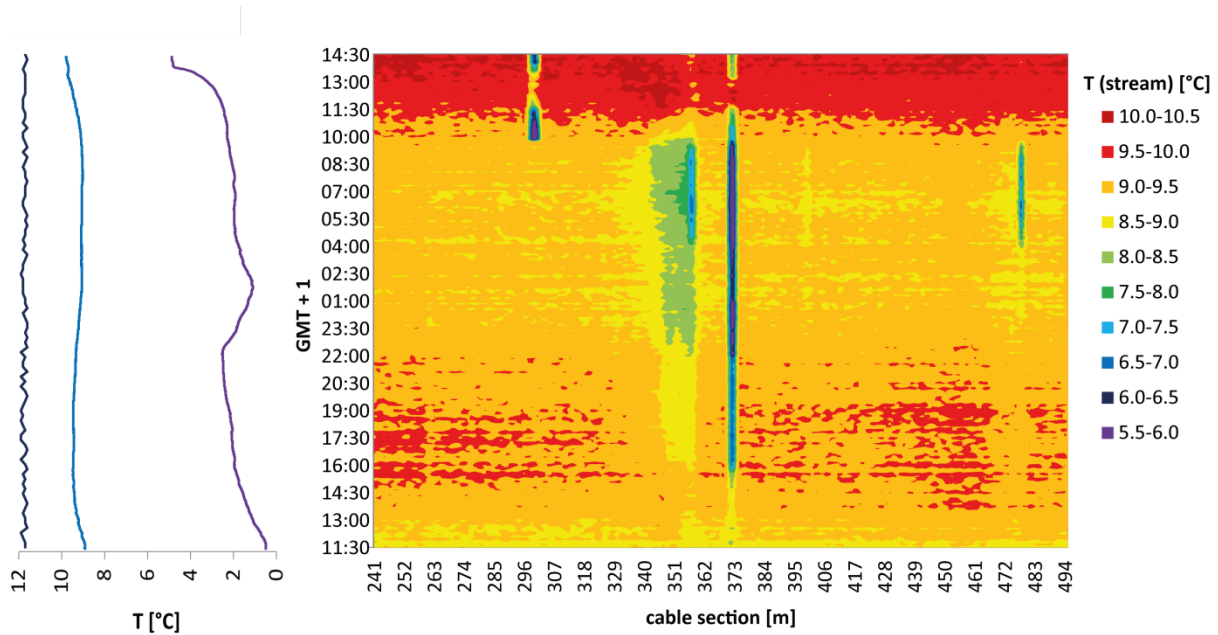


3

4 Figure 5. Air (purple), stream (light blue) and groundwater (dark blue) temperature (line
5 diagram, left side) and surface water temperatures (colour plot, right side) of the Chriesbach
6 before river restoration, on 13 – 15 March 2013. The x-axis of the colour plot shows the
7 sections of the fibre-optic cable in meters, the colours represent the surface water
8 temperatures in °C. Thereby, each coloured line on the x-axis, from cable section 214 m to
9 501 m, represents one measurement. The y-axis states the time of the measurements.

1 Fig B6

2

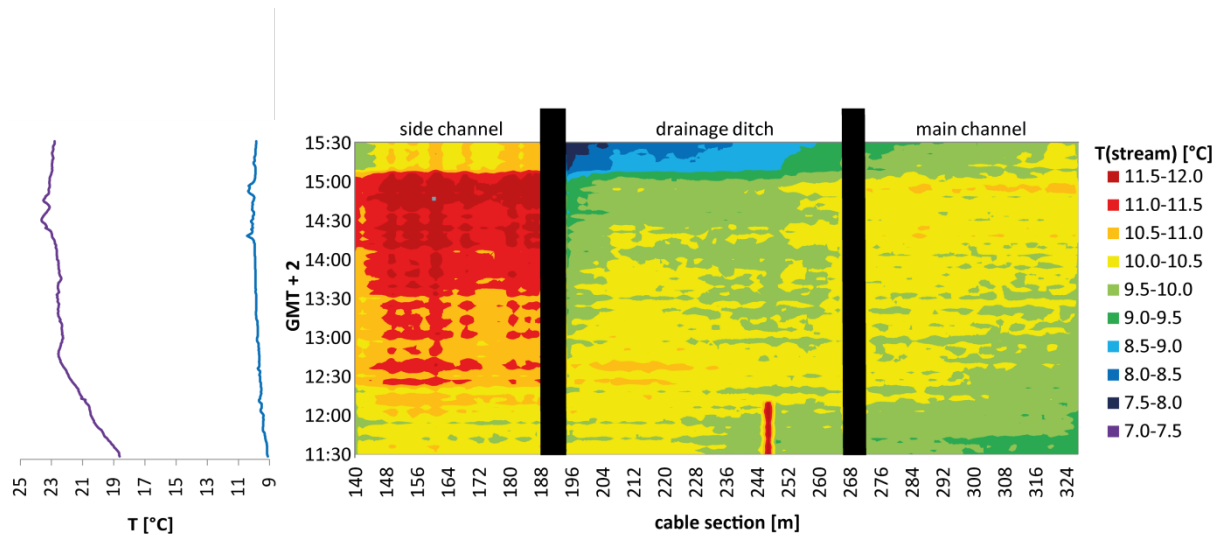


3

4 Figure 6. Air (purple), stream (light blue) and groundwater (dark blue) temperature (line
5 diagram, left side) and surface water temperatures (colour plot, right side) of the Chriesbach
6 after river restoration, on 28 – 29 November 2013. The x-axis of the colour plot shows the
7 sections of the fibre-optic cable in meters, the colours represent the surface water
8 temperatures in °C. Each coloured line on the x-axis, from cable section 241 m to 493 m,
9 represents one measurement. The y-axis states the time of the measurements.

1 Fig B 7

2

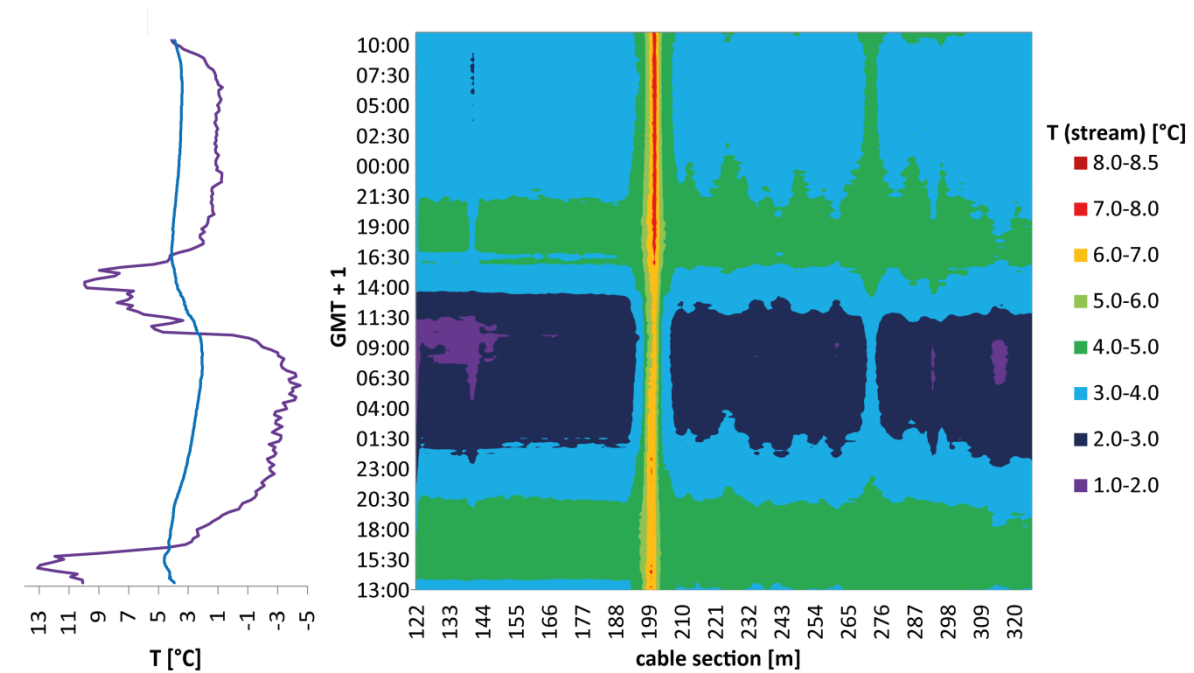


3

4 **Figure 7.** Air and stream reference temperature (line diagram, left side; purple and blue line,
5 respectively) and surface water temperatures (colour plot, right side) of the Urbach on 03
6 September 2013. The x-axis of the colour plot shows the sections of the fibre-optic cable in
7 meters, the colours represent the surface water temperatures in °C. Thereby, each coloured
8 line on the x-axis, from cable section 140 m to 327 m, represents one measurement. The y-
9 axis states the time of the measurements.

1 Fig B8

2

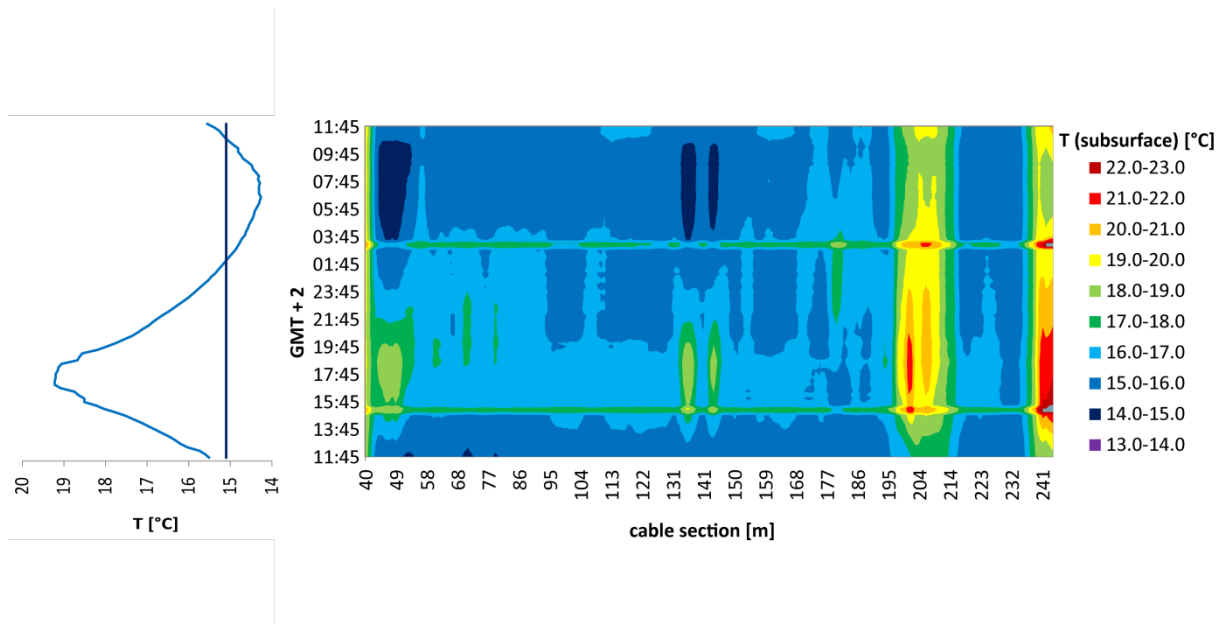


3

4 **Figure 8.** Air and stream reference temperature (line diagram, left side; purple and blue line,
5 respectively) and surface water temperatures (colour plot, right side) of the Röthenbach on 17
6 – 19 February 2014. The x-axis of the colour plot shows the sections of the fibre-optic cable
7 in meters, the colours represent the surface water temperatures in °C. Thereby, each coloured
8 line on the x-axis, from cable section 140 m to 325 m, represents one measurement. The y-
9 axis states the time of the measurements.

1 Fig B9

2



3

4 Figure 9. Surface water (light blue) and groundwater (dark blue) temperature (line diagram,

5 left side) and streambed temperatures (colour plot, right side) in the Chriesbach streambed at

6 about 0.4 m depth, as measured with a fibre-optic cable installed after river restoration on 03

7 – 04 July 2014. The x-axis of the colour plot shows the section of the fibre-optic cable in

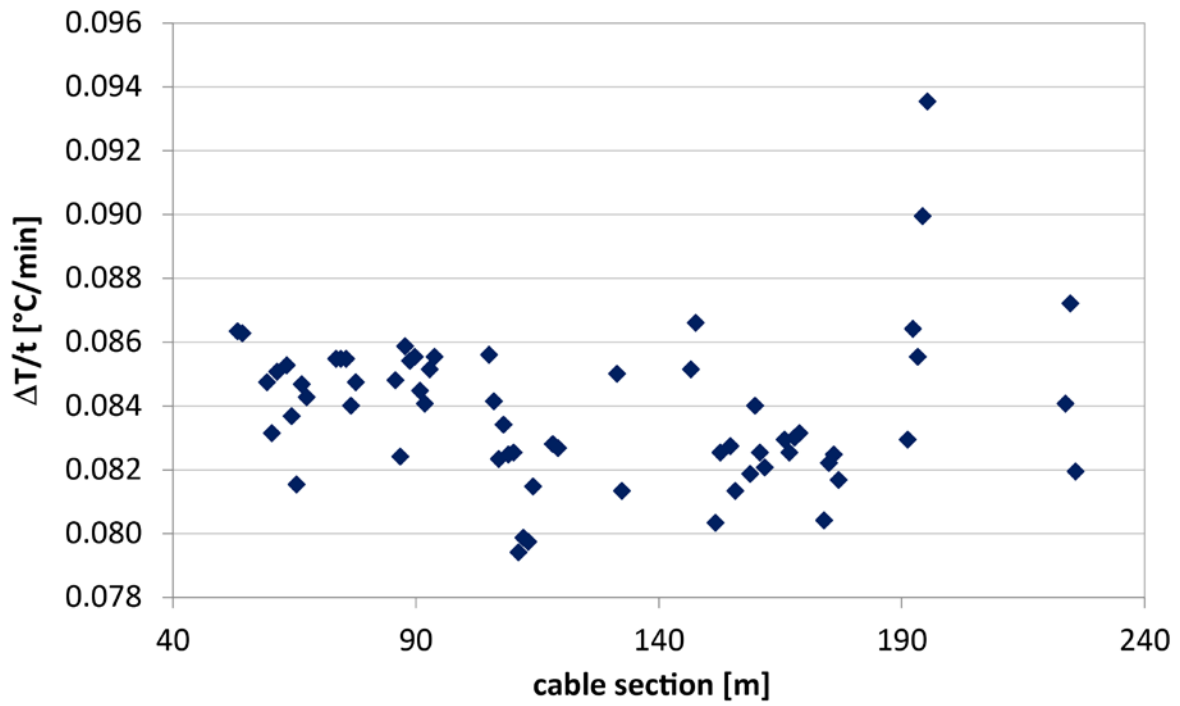
8 meters, the colours represent the streambed temperatures in °C. Thereby, each coloured line

9 on the x-axis, from cable section 40 m to 243 m, represents one measurement. The y-axis

10 states the time of the measurements.

1 Fig B10

2



3

4 Figure 10. Cooling rates of cable sections with a temperature between 15.9 °C and 16.1 °C
5 determined at night in [°C/min].