

Supplement of Hydrol. Earth Syst. Sci. Discuss., 12, 10331–10377, 2015
<http://www.hydrol-earth-syst-sci-discuss.net/12/10331/2015/>
doi:10.5194/hessd-12-10331-2015-supplement
© Author(s) 2015. CC Attribution 3.0 License.



Supplement of

Assessment of the influence of bias correction on meteorological drought projections for Poland

M. Osuch et al.

Correspondence to: M. Osuch (marz@igf.edu.pl)

The copyright of individual parts of the supplement might differ from the CC-BY 3.0 licence.

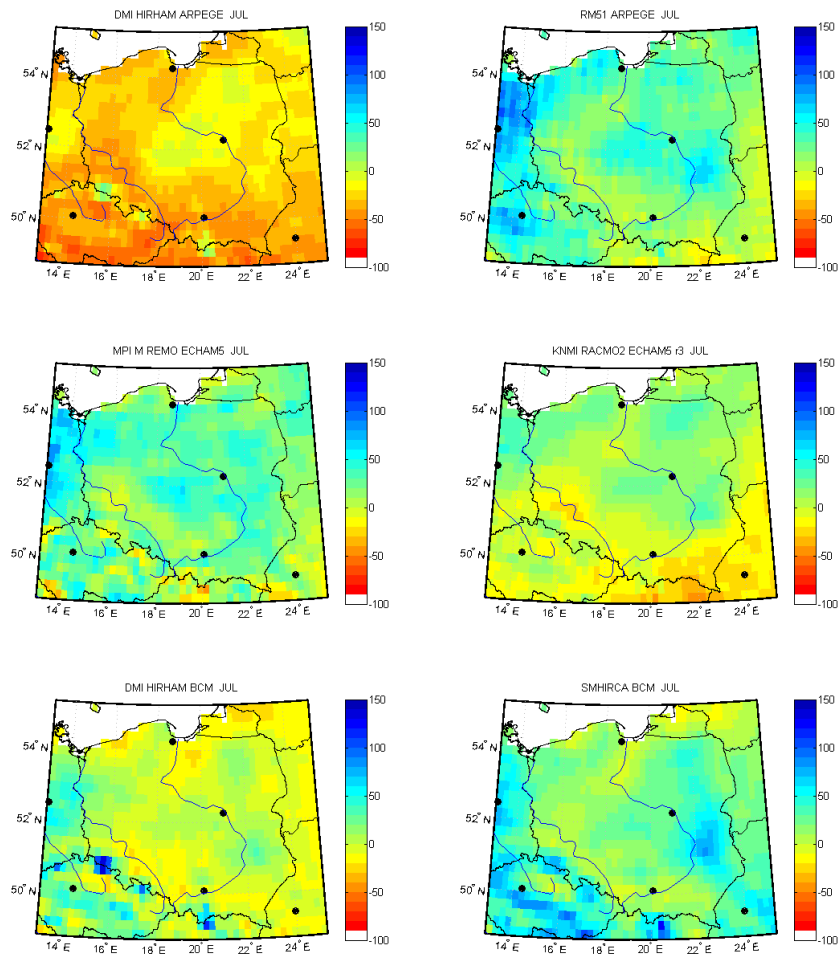


Figure S1. A comparison of spatial patterns of differences in monthly precipitation in July for uncorrected vs. corrected data for the reference period 1971-2000.

Table S1. A comparison of the number of grids with statistically significant trend for SPI 1 estimated on basis precipitation simulations with and without bias correction.

		JAN	FEB	MAR	APR	MAY	JUN	JUL	AUG	SEP	OCT	NOV	DEC
Raw data	DMI HIRHAM ARPEGE	11	61	100	166	258	38	1120	759	457	62	7	14
	RM51 ARPEGE	7	35	60	14	44	27	1160	1164	959	139	12	28
	KNMI RACMO2 ECHAM5 r3	1129	240	212	265	43	580	84	104	296	261	225	1145
	MPI M REMO ECHAM5	671	39	375	129	120	307	270	173	57	107	153	935
	DMI HIRHAM BCM	934	230	1062	118	351	107	224	84	87	48	128	414
	SMHIRCA BCM	1011	10	1108	149	53	20	278	67	87	80	161	1112
Corrected data	DMI HIRHAM ARPEGE	19	116	52	131	247	48	1128	899	673	94	4	29
	RM51 ARPEGE	15	108	41	48	102	27	1101	1139	820	102	29	41
	KNMI RACMO2 ECHAM5 r3	1123	427	282	300	48	551	103	93	337	349	275	1149
	MPI M REMO ECHAM5	826	93	562	154	83	247	233	84	78	138	200	1039
	DMI HIRHAM BCM	869	297	1034	146	368	108	216	41	92	32	77	473
	SMHIRCA BCM	977	38	1052	106	52	20	278	76	84	73	168	1098