

# The importance of year-to-year variation of meteorological and runoff forcings for water quality of a temperate, dimictic lake

**A. T. Romarheim<sup>1,\*\*</sup>, K. Tominaga<sup>2,3,\*</sup>, G. Riise<sup>1</sup>, and T. Andersen<sup>2</sup>**

<sup>1</sup>Department of Environmental Sciences, Norwegian University of Life Sciences, Ås, Norway

<sup>2</sup>Department of Biosciences, University of Oslo, Oslo, Norway

<sup>3</sup>Norwegian Institute for Water Research, Oslo, Norway

\*now at: Centre for Ecological and Evolutionary Synthesis (CEES), Department of Biosciences, University of Oslo, Oslo, Norway

\*\*deceased

Correspondence to: K. Tominaga (koji.tominaga@ibv.uio.no)

## Abstract

Natural stochasticity can pose challenges in managing the quality of the environment, or hinder understanding of the system structure. It is problematic because unfavourable stochastic events cancel the costly management effort and because favourable stochastic event overestimates success of the management effort. This paper presents a variance-based modelling method that can be used to quantify the extent to which the natural stochasticity can affect the target environment. We use a case study of a eutrophication assessment in a Norwegian lake of Årungen, together with a lake model MyLake, in order to present the method, and how this method could assist in answering scientific and managerial questions. Specifically, the case study's goal was to disentangle the respective significance of nutrient loading in runoff and meteorology on the lake. Many scientifically and managerially relevant understandings have been revealed. For example, variation in runoff volume was most prevalent during autumn and winter, while variation in phosphorus inflow was most extensive from late winter to early spring. Thermal related properties in the lake were well predicted by the model, and showed that the time of thermocline formation varied among years by more than one month, from mid-April to mid-May, whereas loading was the most important factor for phytoplankton biomass and water transparency. Mild winters and greater inputs of suspended matter and phosphorus were followed by increased phytoplankton biomass and light attenuation. These findings suggest also that future changes in the global climate may have important implications for local water management decision-making. The present method of disentangling mutually confounding factors is not limited to lake water quality studies and therefore should provide certain utility in other types of ecosystem modelling.

## 1 Introduction

Natural stochasticity sometimes presents challenges in maintaining the quality of the environment. Such is the case for reducing nutrient loading in the hope for making the quality

of downstream lake better. Natural variation in weather for example may confound costly abatement efforts by counteracting the abatement of nutrient loading. In particular, nutrient loading is determined both by hydrology (partially determined by meteorological forcing on land) and by the management effort (agriculture and urban related nutrient loading). Furthermore, weather may also be directly consequential in lake processes such as algal growth. Under this kind of challenge, it is paramount to evaluate to what extent the confounding variable can actually make significant differences in lake water quality. The present study illustrates how a variance-based modelling method could disentangle two major factors affecting a lake, with a test case study of eutrophication recovery of a Norwegian lake.

Scientific community has learnt that nutrient enrichment of lakes may lead to high phytoplankton mass development, low water transparency, and fish mortality due to oxygen depletion (Smith et al., 1999). Mainly two factors affect the nutrient loading to lakes: (1) the soil and land use in the lake catchment, and (2) the hydrology of the watershed. Phosphorus is generally regarded as the limiting nutrient for phytoplankton production in freshwater lakes (Schindler, 1977). Much effort has therefore been given to reduce phosphorus input to aquatic ecosystems, which has demonstrably led to reduced phytoplankton production and increased water transparency in many lakes in Europe and North America (Jeppesen et al., 2005). On the other hand, many lakes have showed delayed or negligible improvements in water quality despite reduced nutrients loading (Jeppesen et al., 2007a).

Year-to-year weather variations have also been recognised to affect physical, chemical and biological processes in lakes (Bailey-Watts and Kirika, 1999; Blenckner et al., 2007; Jeppesen et al., 2009, 2007b; Whitehead et al., 2009). Increase in air temperature has been shown to increase the water temperature (George et al., 2007) and the stability of thermal stratification (Straile et al., 2003a), change the phytoplankton community towards dominance of species adapted to warmer water (Weyhenmeyer et al., 2002), and possibly lead to earlier and higher phytoplankton production (Huber et al., 2008; Weyhenmeyer et al., 2002). The changes in thermal conditions and mixing regime can in turn influence the light, oxygen and nutrient dynamics in the lake, and thereby impact the phytoplankton primary

production and community structure (Tirok and Gaedke, 2007; Wilhelm and Adrian, 2008). Precipitation is also deemed as an important factor determining the water transparency, runoff intensity, and suspended matter discharge (Arheimer et al., 2005; Nöges et al., 2007; Ulén et al., 2007).

Norway has, generally, a low fraction of arable land (3%) and low population density (12 persons km<sup>-2</sup>), so eutrophication is mainly recognizable in intensive agricultural districts at low altitudes. Lake Årungen is situated in a developed agricultural area south-east in Norway, and is one of the most nutrient rich lakes in the country. Geological studies suggest that the natural phosphorus concentration of lakes in this area is 7–8 mg m<sup>-3</sup> (Borch et al., 2007). Eutrophication became a problem in the lake during the 1960s, with phosphorus concentration exceeding 400 mg m<sup>-3</sup> in the 1980s (Løvstad and Krogstad, 1993). Algal blooms, low water transparency, malodorous water, reduced fish stocks, and occasional mass mortality of fish were observed in the lake in this period (Ensby et al., 1984). Despite investments in sewage treatment and extensive changes in agricultural practices since the 1970s to reduce nutrient leaching and erosion from the catchment, algal growth is still high.

Predicting eutrophication responses to nutrient loading is a complex task due to the stochastic dynamics of lake's response to weather, the confounding factor. Here we used one of the lake models (MyLake) (Saloranta and Andersen, 2007) based on system of processes that have been identified as a primary tool for improving our understanding of recovery and progression of eutrophication (Mooij et al., 2010). More precisely, we made combinations of forcing data (meteorological and nutrient loading inputs) for the model, with

1. some forcing data being the actual records and
2. others being the average day-to-day record for the period of 16 years, repeated 16 times.

This approach criss-cross the day-to-day and year-to-year variability in a systematic way, and simulation outputs based on dissimilar combinations of these “actual” and “repeated average year” can be analysed once again from the day-to-day and year-to-year variability. In principle, the actual data are more variable than the repeated average year. If a particular

forcing variable is significant in affecting the lake water quality, switching from the actual data to repeated average year reduces the year-to-year variation in lake water quality variables. Combinations of these two types of forcing data are described in Sect. 2.5. This approach of comparing to average year by opting in the average year for a selected variable is used in a slightly different context by Jöhnk et al. (2008), with a difference being that the “average year” was taken from one candidate year in Jöhnk et al., while the “average year” in the current study was indeed day-of-year-specific year-to-year average. More importantly, the current study demonstrates the use of year-to-year variance for each day of year, which is a powerful visual and quantitative tool in detecting the critical season for a variable.

The separation of two temporarily varied factors affecting the same environmental receptor is not only useful in the lake water quality modeling. For example, agricultural yield and forestry are affected by weather, soil conditions, diseases, and tilling and fertilisation amount and timing. Other examples may be climate change impacts on physical landscape, such as glacial extent or surface water ice cover, which are affected by stochastic meteorological conditions and warming forcing which are mostly anthropogenic but also of natural origin (e.g., volcanic activities), as well as regional multi-year fluctuation such as the North Atlantic Oscillation or El Nino.

The main aim of the current study is to evaluate the relative importance of year-to-year variation of two major factors, namely meteorological forcing and nutrient loading, contributing to lake’s physical, chemical and biological conditions. We also visually inspect how their respective significance varies over the season. To this aim, (1) the MyLake model (Saloranta and Andersen, 2007) was first calibrated against the lake data, (2) then various meteorological and nutrient loading scenarios combining variation of these two major factors were applied, and finally (3) the predicted lake responses were compared among different scenarios, in particular, the variance among years, rather than the absolute value of the predictions.

## 2 Material and methods

### 2.1 Study site

Lake Årungen is a dimictic lake with maximum and average depths of 13 and 8 m, respectively. The lake is located in south-east Norway ( $59^{\circ}41'18''$  N,  $10^{\circ}44'38''$  E; Fig. 1), 25 km south of Oslo, and has a surface area of  $1.2 \text{ km}^2$ . The catchment area covers  $51 \text{ km}^2$ , where 53 % is agricultural land, 34 % forestry, 10 % densely populated and 3 % open water surfaces. The lake is highly exposed to agricultural runoff that causes high nutrient and particle loading. Runoff is mainly through 6 streams of 1.5 to 5 km length. The outlet connects the lake to the marine environment as Lake Årungen enters the Oslofjord through a 3 km long stream.

### 2.2 Model

MyLake is a one-dimensional lake model, adapted from MINLAKE (Riley and Stefan, 1988), which simulates daily changes in physical and chemical dynamics over the depth gradient (Saloranta and Andersen, 2007). The model simulates ice and snow dynamics in a mechanistic manner and it has been applied to winter-freezing lakes in Norway and Finland (Kankaala et al., 2006; Lydersen et al., 2003; Saloranta et al., 2009; Saloranta, 2006; Couture et al., 2014). It was therefore considered as a suitable model for Lake Årungen.

### 2.3 Inputs and outputs

MyLake requires input of meteorological forcing, runoff volume and temperature, and fluxes of suspended inorganic particles and total phosphorus (TP) to model phosphorus and phytoplankton dynamics in the lake (Table 1). Meteorological data for daily air temperature, global radiation, cloud cover, precipitation, relative humidity and wind speed were obtained from the nearby meteorological station located at the Norwegian University of Life Sciences ( $59^{\circ}39'37''$  N,  $10^{\circ}46'54''$  E). Direct measurements of daily runoff volume, runoff water temperature, and fluxes of suspended inorganic particles and total phosphorus to the study

lake Årungen was not available. However these values were estimated using the Skuterud monitoring station (Fig. 1) with a hydrovolumetric weir at which these runoff variables were monitored (1994–2010), providing accurate flux at this subcatchment. In order to account for runoff contributions of different types of landuse in other subcatchments, such as agriculture and urban build up, we used previously determined scaling factor that both correct for flow and nutrient factors (Askilrud, 2010). The monitoring station is located at an inlet stream to Østensjøvann (59°41'18" N, 10°49'45" E), a small lake of 0.4 km<sup>2</sup> which drains into the Lake Årungen (Deelstra et al., 2007). A separate MyLake model was set up for Lake Østensjøvann to account for the buffering effects of this lake in the largest sub-catchment of Lake Årungen. The simulated water properties of Lake Østensjøvann were combined with runoff from the other sub-catchments as an estimate of the total runoff to Lake Årungen.

Six variables including whole-lake average TP pool, mean surface chlorophyll concentration, light attenuation coefficient, thermocline depth, epilimnion temperature, and ice thickness were calculated from unprocessed model outputs (Table 1) in order to ease interpretation of the statistical analyses for scenario experiment described below.

## 2.4 Model calibration

Water temperature, TP, soluble reactive phosphorus (SRP), and chlorophyll *a* concentration from the deepest location in the lake were used to calibrate the model (Table 1). Vertical water temperature profile was continuously logged every hour at eight depths between 0.7 and 12.6 m by Hobo pendant temperature loggers (model 64K-UA-002-64; Onset Computer Corporation, Bourne, MA, USA) in the period from November 2008 to August 2010. Water samples for chemical and biological analyses were collected with a modified Ruttner water sampler at seven depths twice a month or monthly ( $n = 49$ ) from January 2008 to September 2010. TP, SRP and chlorophyll *a* were determined spectrophotometrically (UV-VIS Spectrophotometer UV-1201, Shimadzu, Kyoto, Japan).

We deployed the Markov chain Monte Carlo (MCMC) method (Andrieu et al., 2003; Saloranta et al., 2009) to calibrate the model. The calibration consisted of two stages. The first MCMC calibration stage involved three physical parameters (see Table 2) that only affect

heat dynamics, in particular thermocline depth. This first calibration was run against daily temperature measurements, using 2000 MCMC steps with the first 1000 for burn-in. The second MCMC calibration stage involving eight parameters (see Table 2) that affect phosphorus and chlorophyll dynamics, but not temperature, was run against measurements of TP, SRP, and chlorophyll *a* in 30 000 MCMC steps with the first 10 000 for burn-in. For example, algal growth in the MyLake model is a function of nutrient concentration, light availability and water temperature, and amplitude of these factors were controlled by parameters. In the present study, runoff was given as external input to the model, and water temperature and underwater light conditions were determined in the first stage of MCMC. Therefore, for the example of algal growth, the second stage of MCMC only changed the amplitude of algal growth in response to these external factors. For these MCMC applications, convergence was monitored visually. Linear interpolation was used to match model outputs on a 0.5 m vertical grid to the actual measurement depths. Although it was not used directly during the MCMC calibration, model goodness of fit was informally assessed by root mean square error (RMSE). The medians of the posterior parameter distributions generated from both stages of the MCMC calibrations were used for the scenarios experiments described in the following.

## 2.5 The variance-based method for disentangling confounding factors

The model was run under four scenarios for nutrient loading and weather in order to quantify the respective impacts of weather variation and loading conditions on phosphorus and phytoplankton dynamics (Table 3). Runoff volume (in the runoff group) is predominantly influenced by precipitation (in the meteorology group), but runoff volume was kept together with runoff concentrations because the most important influence the runoff has is the total amount of nutrients, which we obtain by multiplying concentration by volume. These scenarios were based on input combination of observed data (original data, 1994–2010) and synthetic data, where the synthetic data were created by taking the year-to-year mean ( $n = 16$ ) of each of the day of the year. Synthetic data repeats the calculated mean year



with 365 days sixteen times. The 29 February is removed in year-to-year mean calculation, and 28 February was repeated to account for the 29 in leap years.

This approach combines the actual forcing data for some variables together with average year data for the other forcing data variables. Comparing such a synthetic scenario against the scenario using full actual forcing data elucidates importance of year-to-year variation of the second set of variables. For example, scenario C (repeated average-year runoff) will necessarily have lower year-to-year variation ( $n = 16$ ) in output variables compared with scenario A (full original data) (Table 3); the difference in the scenario input (i.e. runoff input) accounts for the reduction in the year-to-year variation in the output variables. By examining which output variables are most reduced in year-to-year variation among all output variables, we obtain crucial information on the importance of runoff forcing data in the output. Thus we achieved the goal of the present study, namely disentangling the relative importance of year-to-year variation of two major factors (meteorological and loading inputs). The idea of mixing actual and average-year forcing data were derived from the study conducted by Jöhnk et al. (2008), in which the authors assessed the relative importance of various meteorological variables (air temperature, cloudiness, wind speed) in affecting various lake responses such as water temperature and algal cell counts of 3 phytoplankton groups. The present study compares standard deviation of the 16 years of simulation outputs for each day of year for 6 output variables among several scenarios.

Combining the repeated average input together with actual stochastic input (such as in the scenarios B and C, Table 3) causes unrealistic input for two reasons. One reason is the inconsistency among variables on the daily basis. For example, because runoff is controlled by precipitation, the scenario C for instance (original weather + averaged runoff) on a daily basis may suffer from a potentially undesirable situation such as high precipitation with no cloud on a certain day. This is unrealistic, but from the lake ecosystem perspective, the runoff's role is mostly as the source of nutrient, and weather as the source of energy, and the fact that the lake water is accumulation of old water from runoff introduced many days ago, the influence of this inconsistency in combination is minimal. The second reason is that the intra-variability or within-year variability that naturally stochastic variables such as mete-

hydrological inputs should have been lost in the present study's design. This can cause problems such as not providing extreme wind events due to averaging despite such wind events may be crucial for the on-set of ice formation, or determination of thermocline. Hydrodynamic models are therefore usually driven by stochastically generated time series (Semenov et al. 1998 or Schlögl et al. 2012). Alternatively, most average looking year could have been chosen as in Jöhnk et al. (2008). However, the current study requires the average to be done on multiple criteria or variables, making choosing one example year will also be not average year on all the variables. Due to the purpose of reducing the year-to-year variation and not to be particularly bound by a selected single year or randomly generated year, repeated average year was used despite these potential problems. In the present study, year-to-year variation in outputs of these four scenarios will be discussed but not the actual values on the daily basis, and the results are interpreted with care that scenario A is the most variable year-to-year, that, either B or C is the next variable, and finally that D is the least variable year-to-year. Although this care does not safeguard the unrealistic intra-year variation, potential inconsistency is detected.

## 2.6 Post-simulation methods

All the data analysis and statistical analyses were done using R (version 3.1.2). A two-way analysis of variance (ANOVA) was run on the 16 years of water year based simulation statistics (water year mean, see Table 1), among scenarios A, B, C and D (two weather factors by two loading factors, see Table 3). All annual averages are computed over the period from 1 October to 30 September, commonly used in Europe to refer on a hydrological year, or a water year (Ottesen and Ræstad, 1978). Since treatment contrasts are nested within water years we factored out the between-year variances to gain a greater power in the statistical tests. Principal component analysis (PCA) was used to explore the relationships between meteorological and land-related forcing and their relevance for the simulated lake response. Four water years with extreme PCA scores were selected for studying contrasting lake responses in closer details.

## 3 Results

### 3.1 Calibration

The simulated water temperature and thermal dynamics of the lake were in agreement with the lake observed data. Observed water temperature measurements were well predicted by simulation and the RMSE was less than 2 °C at all lake depths (Fig. 2). After the water temperature calibration, parameters controlling TP, SRP, and chlorophyll *a* were calibrated against observed data for the period from January 2008 to September 2010. The epilimnion TP, SRP, and chlorophyll *a* concentrations were well predicted by the model, although their prediction was less successful than the prediction of the water temperature. The TP and SRP were better predicted by the model in pelagic surface water than in deep water whereas the chlorophyll *a* showed the opposite pattern. In general, the model simulated well TP and SRP, although both phosphorus forms were overestimated in early spring and autumn at shallow depths, while underestimated in bottom water. Simulated SRP concentrations were also somewhat higher than observed in winters. However, the simulation succeeded in showing a decreasing trend of lake phosphorus in spring and midsummer, and in mimicking its increase during the autumn mixing of water. Although the simulated chlorophyll concentrations were lower than the measured values, the model was able to predict seasonal variation in phytoplankton primary production and to simulate high phytoplankton biomasses in the lake epilimnion during midsummer.

### 3.2 Variability in forcing data

Inter-annual variation was expressed as the standard deviation in inputs and outputs between the years. All weather inputs varied between years (Fig. 3), with air temperature and global radiation having the strongest seasonal pattern in inter-annual variation (i.e. greater 16 year variation as compared to year-to-year variation on a day-of-year basis). The inter-annual variation in air temperature was strongest in the winter period, whereas global radiation varied most during the summer months. The variation in cloud cover, precipitation

and relative humidity was generally similar across seasons. The year-to-year variation for precipitation was particularly high in December and in the period from July to September, the latter reflecting extreme precipitation events. Wind speed varied most in winters.

Runoff input data on water flow and concentrations of TP and suspended matter all varied seasonally and between years. The variation in runoff volume was greatest in the period from October to May. No clear seasonal pattern in the degree of variability could be found for suspended matter and TP fluxes, although the variation of TP influx seemed to peak in February–March.

### **3.3 Variability in simulation outputs: disentangled significance of confounding factors**

Differences in year-to-year variation among the scenarios (Fig. 4) and the annual statistics (Table 4) illustrate the seasonal influence of the external forcing on the thermal regime and the phosphorus and phytoplankton dynamics in the lake. There is large amount of N in Årungen, as N is applied in surplus at the agricultural fields. Even though there is some reduction in N during summer, N is excluded as the limiting nutrient (Romarheim, 2012). The lake responded differently between years; all simulated outputs, except ice thickness, showed large variation in the beginning and at the end of the phytoplankton growing season (Fig. 4). All simulated output variables were influenced by external forcing as they varied inter-annually for all model scenarios (see variance decomposition in Table 4). Ice thickness was significantly affected by weather ( $P < 0.001$ ) as both air temperature and winter precipitation highly contributed to its variation between years (Table 4; Fig. 4). The variation in thermocline depth in May and October was well revealed by the model, and seemed to be equally dependent on weather and loading. The epilimnion temperature during the whole growing season was largely controlled by weather. The TP content in the lake was most variable in the period from November to January, and in April and July. Loading could mostly explain the inter-annual TP variation in the lake, whereas precipitation contributed to TP variation only in the spring, and air temperature only during the winter period. Loading was the overall most important factor in controlling the light attenuation coefficient

( $P < 0.001$ ) and surface chlorophyll concentration ( $P < 0.001$ ). Weather seemed to be important in controlling chlorophyll and light attenuation in early spring whereas loading was the most important factor controlling the both variables from June to September. The year-to-year variation in these two variables from June to September under the scenario C was higher than scenario A, despite that scenario C is less variable year-to-year than scenario A in loading. This might be because scenario C may distribute the autumn runoff events that is still significant after spreading over the years, and this might have caused the light-related variables to be unstable on a day-to-day scale.

The years 1996, 2000, 2006 and 2007 were the four most extreme years determined on the basis of the PCA analysis (Fig. 5). The year 1996 was characterized by relatively low average annual air temperature, a thin cloud cover and low precipitation, which resulted in low epilimnion water temperature, short lasting thermocline, low runoff volume, and TP in the lake. The year 2007 represents an opposite to 1996, regarding weather characteristics and resulting model simulation with relatively high average annual air temperature and precipitation. Increase in wind speed, decrease in air temperature, and decrease in precipitation coincided with increase in ice thickness and global radiation, such as in 2003–2006, 2009, and 2010. These weather conditions resulted in lower suspended inorganic particles and TP in runoff which coincided with lower surface chlorophyll concentration and light attenuation. The year 2006 was identified as the extreme during this period, with a cold winter followed by a warm summer. In contrast, the year 2000 was characterized as a year with less global radiation, lower summer air temperature, and higher wind speed, but with higher winter temperature and precipitation. Such weather conditions pronounced higher TP and suspended particle in runoff compared with an average year, resulting in a high surface chlorophyll concentration and lower water transparency.

The methodological choice of using a repeating average year (see Section 2.5) may have reduced the impact of extreme weather events but probably caused little difference in the overall interpretation and conclusion. But the result that the daily year-to-year variation for either scenario B or C was closely following scenario A, depending on the modelled variable (TP content, surface chlorophyll, light attenuation coefficient for scenario B, and ice thick-

ness, thermocline depth, and epilimnion temperature for scenario C) provides confidence that the conclusions will not change due to the methodological limitation.

## 4 Discussion

### 4.1 Year-to-year variability in lake responses

Year-to-year weather variations, as well as the influence of catchment land-use and hydrology, hinder our understanding of how individual stressors may affect the lake response (Blenckner, 2005). Our model experiment, which involved the input of weather and loading data for 16 years, was able to outline the respective importance of year-to-year variation in external forcing on physical, chemical and biological response in Lake Årungen. The combination of high forcing variability and high lake response sensitivity made the inter-annual variation most dramatically expressed in spring and autumn.

Air temperature, precipitation, and wind speed are the principal factors influencing freshwater ecosystems in a changing climate (Nickus et al., 2010). The lake thermal regime was to a large extent affected by weather conditions, particularly by air temperature. Variable winter air temperatures were an important factor influencing the heating and mixing processes during spring. A dynamic physical environment at the beginning of the growing season has considerable influence on the phytoplankton community structure and its dynamics (Weyhenmeyer et al., 2002). For example, increased surface water temperatures in the English Lake District (George et al., 2007) and incomplete water mixing in Lake Constance (Straile et al., 2003a) have earlier been associated with mild winters. High inter-annual variation in winter air temperatures in Lake Årungen was reflected in the simulated ice thickness and phenology of ice formation, with ice forming in December–January and disappearing in March–April. Also in other lake studies, thinner and shorter ice cover has been related to mild winters (Nickus et al., 2010). In this study, the time of thermocline formation varied among years by more than one month, from mid-April to mid-May. The large year-to-year variation in thermocline depth and duration could lead to changes in temperature, light,

and nutrient condition in the lake, which further shape the phytoplankton community and determine its total biomass (Padisák et al., 2010; Zohary et al., 2010). For instance, early disappearance of diatoms and high development of cyanobacteria in European lakes has been related to winter warming and increased water temperature (Weyhenmeyer et al., 2002). Furthermore, increase in water stability favours the buoyant phytoplankton species such as bloom forming cyanobacteria (Reynolds et al., 1983; Winder and Hunter, 2008).

Year-to-year variation in phosphorus content in the lake was highly influenced by nutrient loading. This indicates that the external nutrient supply remains an important source of phosphorus in the lake. Although the changes in nutrient loading are primarily linked to anthropogenic activities in the catchment, in particular to practices in agriculture, the short-term variations in weather and runoff can also influence the nutrient supply from external sources. Lake Årungen is surrounded by agricultural land, and is especially sensitive to variable weather conditions that promote nutrient loading from the catchment. More precisely, air temperature and rainfall frequency and intensity affect the runoff and the soil erosion pattern, particularly during the winter period. Increase in winter temperatures occurring together with frequent freezing and melting events increases the risk of erosion, which again will increase the nutrient loading to the lake (Bechmann et al., 2005; Jeppesen et al., 2009; Nöges et al., 2007). Although not statistically demonstrated in the present study, the indirect impacts of weather conditions on discharge may still be important in regulating the nutrient dynamics. Variable winter weather conditions, and the time of ice out were most important cause of year-to-year variable phosphorus content in the period from November to January and in April in Lake Årungen. Enhanced phosphorus concentrations in streams during winter, and high phosphorus loading in early spring, both contribute to the total lake phosphorus concentration during the following summer in two Norwegian lakes with agricultural catchments (Bechmann et al., 2005). In addition, the variation in summer TP content could also be the result of between-year variation in rainfall, especially due to extreme precipitation events as observed for particular days in July. High inter-annual variation in TP content can consequently result in variable phytoplankton biomass between years.

Phytoplankton biomass and light were significantly affected by loading, although atmospheric forcing also contributed to their inter-annual variation in the lake. The effect of loading was pronounced during the whole algal growing season, whereas weather had the strongest effect in early spring and from mid-August to the end of the growing season. Thermal stratification is highly dependent on weather and may further influence water mixing as well as light and nutrient regimes, which are important in controlling the phytoplankton dynamics (Padisák et al., 2010; Zohary et al., 2010). Similar pattern of year-to-year variation in water temperature, chlorophyll concentration, and light attenuation indicates a close relationship between these variables. Higher air temperature promoted higher water temperature and higher stability of the thermal stratification which enhanced phytoplankton production of bloom forming cyanobacteria (Reynolds et al., 1983; Weyhenmeyer et al., 2002). Runoff and soil erosion, caused by intense precipitation and frequent melting of snow and ice during mild winters, affect eutrophication and water turbidity (Bechmann et al., 2005; Jeppesen et al., 2009). Thus light may limit phytoplankton growth more than nutrients in highly turbid lakes such as Lake Årungen (Dokulil, 1994). Reduced light availability may be crucial for the competitive success of cyanobacteria which are functionally adapted to low light conditions (Litchman, 1998). Particularly high dominance of cyanobacteria has been observed in the Lake Årungen after mild winters followed by low light conditions in spring (Romarheim et al., unpublished). Therefore, additional measures to control soil erosion may need to be implemented in water management, not only to reduce the supply of nutrients, but also to avoid low water transparency which may favour development of potentially toxic cyanobacteria.

## 4.2 Implications for lake management

According to our PCA analysis, most of the 1990s were categorized by winters with higher temperatures and more rainfall. The mild winters were related to a positive North Atlantic Oscillation (NAO) phase which has been shown to strongly influence physicochemical and biological responses in western European lakes (George et al., 2007; Straile et al., 2003b; Weyhenmeyer et al., 2002). The effect of climate condition on water ecosystems, however,



should be considered individually as the lake response is also determined by the lake's geographical position, landscape topography, and the lake's morphometry and mixing regime (Nickus et al., 2010). Our model experiment indicated that greater inflow of suspended matter and phosphorus to the lake Årungen is expected after mild winters with high precipitation. Consequently, higher chlorophyll concentrations and greater light attenuation were predicted after mild and wet winters such in the year of 2000. Mild winters may thus counteract measures aimed to reduce external nutrient supply and to control phytoplankton production in cold temperate lakes, appearing to have contributed to little improvement. On the contrary, cold winters were related to thicker ice layer, less inflow of suspended matter and phosphorus, and low chlorophyll and light attenuation. This was consistent with the observed increase in water transparency and reduction of phytoplankton biomass, particularly of cyanobacteria, in Lake Årungen after the cold winter in 2010 (Romarheim et al., unpublished). Special attention must therefore be given to management practices, which should minimize the use of fertilizers and reduce the risk of nutrient runoff and soil erosion, especially in areas that drains directly into the lake. Higher annual air temperature coincided with warmer epilimnion, shallower thermocline and extended summer stratification such as for the year of 2007. In addition, high annual precipitation and runoff volume, particularly in summer, coincided with warmer years.

Globally, all years in the period from 1995 to 2006, with exception of 1996, were among the warmest since 1850 (Trenberth et al., 2007). Likewise, the year 1996 was characterised with low average annual air temperature in our model experiment. Lower annual air temperature and low rainfall in 1996 led to low epilimnion temperature, and a deep and short lasting thermocline. According to future climate predictions for Scandinavia, warmer winters and increased winter precipitation are expected in south-eastern Norway (Hanssen-Bauer et al., 2005). If so, we should also expect more intensive soil erosion, higher phosphorus loading, lower water transparency, and greater phytoplankton biomasses, primarily of cyanobacteria in the lakes. Global climate changes and inter-annual variations in the local weather both directly, and indirectly through an impact on the catchment, influence the physicochemical and biological processes in lakes. The limnological and biogeochemical knowledge of this

lake identified by decomposing year-to-year variation of the two factors, carries potential in connecting future management. Runoff is partially controlled by precipitation which in turn is predicted to change, and so are air temperature and global radiation. Therefore, the effect of climate should be considered in future decision-making concerning water management.

*Acknowledgements.* We thank the Norwegian Institute for Agricultural and Environmental Research (Bioforsk) for providing runoff data from Skuterud monitoring station. We also thank Johnny Kristiansen at the Department of Environmental Sciences, Norwegian University of Life Sciences for excellent assistance during the field and laboratory work. PURA, an EU water framework directive project within the Follo, Oslo region, Norway, is also thanked for financial support during the study. This work was partly carried out with support from the Research Council of Norway (Project Eutropia 190028/S30). We thank Tuomo Saloranta for providing an example code for parameter estimation. The calculations presented in this manuscript was made possible with freely available software, in particular, Octave and R, and we are grateful for efforts made by the authors of the free software. This open-access publication was made possible with the Open Access Publication Fund at the University of Oslo.

## References

- Andrieu, C., de Freitas, N., Doucet, A., and Jordan, M.: An introduction to MCMC for machine learning, *Mach. Learn.*, 50, 5–43, 2003.
- Arheimer, B., Andréasson, J., Fogelberg, S., Johnsson, H., Pers, C. B., and Persson, K.: Climate change impact on water quality: model results from southern Sweden, *Ambio*, 34, 559–566, 2005.
- Askilsrud, H.: Nutrient Input to Lake Årungen: Assessment of Data Availability to Run the MyLake Model, M.S. Thesis, Norwegian University of Life Sciences, Ås, Norway, 2010.
- Bailey-Watts, A. E. and Kirika, A.: Poor water quality in Loch Leven (Scotland) in 1995 in spite of reduced phosphorus loadings since 1985: the influences of catchment management and inter-annual weather variation, *Hydrobiologia*, 403, 135–151, doi:10.1023/A:1003758713050, 1999.
- Bechmann, M., Berge, D., Eggstad, H., and Vandsemb, S.: Phosphorus transfer from agricultural areas and its impact on the eutrophication of lakes – two long-term integrated studies from Norway, *J. Hydrol.*, 304, 238–250, 2005.
- Blenckner, T.: A conceptual model of climate-related effects on lake ecosystems, *Hydrobiologia*, 533, 1–14, doi:10.1007/s10750-004-1463-4, 2005.

- Blenckner, T., Adrian, R., Livingstone, D. M., Jennings, E., Weyhenmeyer, G. A., George, D. G., Jankowski, T., Järvinen, M., Aonghusa, C. N., Nöges, T., Straile, D., and Teubner, K.: Large-scale climatic signatures in lakes across Europe: a meta-analysis, *Global Change Biol.*, 13, 1314–1326, doi:10.1111/j.1365-2486.2007.01364.x, 2007.
- Borch, H., Yri, A., Løvstad, Ø., and Turtumøygard, S.: Titaksplan for Årungen (Abatement measures for Lake Årungen, in Norwegian), Tech. Rep. 52, Norwegian Institute for Agricultural and Environmental Research, Ås, Norway, 2007.
- Couture, R.-M., Tominaga, K., Starrfelt, J., Moe, S. J., Kaste, Ø., and Wright, R. F.: Modelling phosphorus loading and algal blooms in a Nordic agricultural catchment-lake system under changing land-use and climate, *Environ. Sci. Proces. Imp.*, 16, 1588–1599, doi:10.1039/c3em00630a, 2014.
- Deelstra, J., Ludvigsen, G. H., Pengerud, A., Eggestad, H. O., Tveiti, G., and Øygarden, L.: Jord- og vannovervåking i landbruket (JOVA): Skuterudbekken (Monitoring of soil and water in agriculture at Skuterud Stream, in Norwegian), Tech. Rep. 118, Norwegian Institute for Agricultural and Environmental Research, Ås, Norway, 2007.
- Dokulil, M. T.: Environmental control of phytoplankton productivity in turbulent turbid systems, *Hydrobiologia*, 289, 65–72, doi:10.1007/BF00007409, 1994.
- Ensby, S., Borgstrøm, R., Langeland, G., Rosland, F., and Sanni, S.: Årungen: tilstand, aktuelle sanerings- og restaureringstiltak: rapport utarbeidet på grunnlag av tverrfaglig forskningsaktivitet i perioden 1980–1983 (State, remediation and restoration measures in Lake Årungen: report based on interdisciplinary research in 1980–1983, in Norwegian), Institutt for Georessurs- og Forurensningsforskning, Ås, Norway, 1984.
- George, G., Hurley, M., and Hewitt, D.: The impact of climate change on the physical characteristics of the larger lakes in the English Lake District, *Freshwater Biol.*, 52, 1647–1666, doi:10.1111/j.1365-2427.2007.01773.x, 2007.
- Hanssen-Bauer, I., Achberger, C., Benestad, R. E., Chen, D., and Forland, E. J.: Statistical downscaling of climate scenarios over Scandinavia, *Clim. Res.*, 29, 255–268, doi:10.3354/cr029255, 2005.
- Huber, V., Adrian, R., and Gerten, D.: Phytoplankton response to climate warming modified by trophic state, *Limnol. Oceanogr.*, 53, 1–13, doi:10.4319/lo.2008.53.1.0001, 2008.
- Jeppesen, E., Søndergaard, M., Jensen, J. P., Havens, K. E., Anneville, O., Carvalho, L., Coveney, M. F., Deneke, R., Dokulil, M. T., Foy, B., Gerdeaux, D., Hampton, S. E., Hilt, S., Kangur, K., Köhler, J., Lammens, E. H., Lauridsen, T. L., Manca, M., Miracle, M. R., Moss, B.,

Nöges, P., Persson, G., Phillips, G., Portielje, R., Romo, S., Schelske, C. L., Straile, D., Tatrai, I., Willén, E., and Winder, M.: Lake responses to reduced nutrient loading – an analysis of contemporary long-term data from 35 case studies, *Freshwater Biol.*, 50, 1747–1771, doi:10.1111/j.1365-2427.2005.01415.x, 2005.

Jeppesen, E., Meerhoff, M., Jacobsen, B. A., Hansen, R. S., Søndergaard, M., Jensen, J. P., Lauridsen, T. L., Mazzeo, N., and Branco, C. W. C.: Restoration of shallow lakes by nutrient control and biomanipulation – the successful strategy varies with lake size and climate, *Hydrobiologia*, 581, 269–285, doi:10.1007/s10750-006-0507-3, 2007a.

Jeppesen, E., Søndergaard, M., Meerhoff, M., Lauridsen, T. L., and Jensen, J. P.: Shallow lake restoration by nutrient loading reduction – some recent findings and challenges ahead, in: *Shallow Lakes in a Changing World*, edited by: Gulati, R. D., Lammens, E., Pauw, N. D., and Donk, E. V., *Developments in Hydrobiology*, no. 196, Springer Netherlands, Dordrecht, the Netherlands, 239–252, 2007b.

- Jeppesen, E., Kronvang, B., Meerhoff, M., Sondergaard, M., Hansen, K. M., Andersen, H. E., Lauridsen, T. L., Liboriussen, L., Beklioglu, M., Ozen, A., and Olesen, J. E.: Climate change effects on runoff, catchment phosphorus loading and lake ecological state, and potential adaptations, *J. Environ. Qual.*, 38, 1930–1941, 2009.
- Jöhnk, K. D., Huisman, J., Sharples, J., Sommeijer, B., Visser, P. M., and Stroom, J. M.: Summer heatwaves promote blooms of harmful cyanobacteria, *Global Change Biol.*, 14, 495–512, doi:10.1111/j.1365-2486.2007.01510.x, 2008.
- Kankaala, P., Huotari, J., Peltomaa, E., Saloranta, T., and Ojala, A.: Methanotrophic activity in relation to methane efflux and total heterotrophic bacterial production in a stratified, humic, boreal lake, *Limnol. Oceanogr.*, 51, 1195–1204, doi:10.4319/lo.2006.51.2.1195, 2006.
- Litchman, E.: Population and community responses of phytoplankton to fluctuating light, *Oecologia*, 117, 247–257, doi:10.1007/s004420050655, 1998.
- Løvstad, Ø. and Krogstad, T.: Årungen 1992: eutrofiering, plantenæringsstoffer og blågrønnalger (Lake Årungen 1992: eutrophication, plant nutrients and blue-green algae, in Norwegian), Institutt for Jordfag, Norges Landbrukshøgskole, Ås, Norway, 1993.
- Lydersen, E., Aanes, K. J., Andersen, S., Andersen, T., Brettum, P., Bækken, T., Lien, L., Lindstrøm, E. A., Løvik, J. E., Mjelde, M., Oredalen, T. J., Lyche, A. S., Røpmstad, R., Rørslett, B., and Saloranta, T.: THERMOS-projektet: Fagrapport 1998–2002 (THERMOS Project technical report 1998–2002, in Norwegian), Tech. Rep. 4720, Norwegian Institute for Water Research, Oslo, Norway, 2003.
- Mooij, W. M., Trolle, D., Jeppesen, E., Arhonditsis, G., Belolipetsky, P. V., Chitamwebwa, D. B. R., Degermendzhy, A. G., DeAngelis, D. L., Domis, L. N. D. S., Downing, A. S., Elliott, J. A., Fragoso, C. R., Gaedke, U., Genova, S. N., Gulati, R. D., Hakanson, L., Hamilton, D. P., Hipsey, M. R., 't Hoen, J., Huelsmann, S., Los, F. H., Makler-Pick, V., Petzoldt, T., Prokopenko, I. G., Rinke, K., Schep, S. A., Tominaga, K., Van Dam, A. A., Van Nes, E. H., Wells, S. A., and Janse, J. H.: Challenges and opportunities for integrating lake ecosystem modelling approaches, *Aquat. Ecol.*, 44, 633–667, doi:10.1007/s10452-010-9339-3, 2010.
- Nickus, U., Bishop, K., Erlandsson, M., Evans, C. D., Forsius, M., Laudon, H., Livingstone, D. M., Monteith, D., and Thies, H.: Direct impacts of climate change on freshwater ecosystems, in: *Climate Change Impacts on Freshwater Ecosystems*, edited by: Kernan, R., Battarbee, R. W., and Moss, B., Wiley-Blackwell, Chichester, West Sussex, UK, 38–64, 2010.

- Nõges, P., Kägu, M., and Nõges, T.: Role of climate and agricultural practice in determining matter discharge into large, shallow Lake Võrtsjärv, Estonia, in: *Eutrophication of Shallow Lakes with Special Reference to Lake Taihu, China*, edited by: Qin, B., Liu, Z., and Havens, K., *Developments in Hydrobiology*, no. 194, Springer Netherlands, Dordrecht, the Netherlands, 125–134, 2007.
- Otnes, J. and Ræstad, E.: *Hydrologi i praksis*, Ingeniørforlaget, Oslo, Norway, 1978.
- Padisák, J., Hajnal, É., Naselli-Flores, L., Dokulil, M. T., Nõges, P., and Zohary, T.: Convergence and divergence in organization of phytoplankton communities under various regimes of physical and biological control, *Hydrobiologia*, 639, 205–220, doi:10.1007/s10750-009-0021-5, 2010.
- Reynolds, C. S., Wiseman, S. W., Godfrey, B. M., and Butterwick, C.: Some effects of artificial mixing on the dynamics of phytoplankton populations in large limnetic enclosures, *J. Plankton Res.*, 5, 203–234, doi:10.1093/plankt/5.2.203, 1983.
- Riley, M. J. and Stefan, H. G.: MINLAKE: a dynamic lake water quality simulation model, *Ecol. Model.*, 43, 155–182, doi:10.1016/0304-3800(88)90002-6, 1988.
- Saloranta, T. M.: Highlighting the model code selection and application process in policy-relevant water quality modelling, *Ecol. Model.*, 194, 316–327, doi:10.1016/j.ecolmodel.2005.10.031, 2006.
- Saloranta, T. M. and Andersen, T.: MyLake – a multi-year lake simulation model code suitable for uncertainty and sensitivity analysis simulations, *Ecol. Model.*, 207, 45–60, 2007.
- Saloranta, T. M., Forsius, M., Jarvinen, M., and Arvola, L.: Impacts of projected climate change on the thermodynamics of a shallow and a deep lake in Finland: model simulations and Bayesian uncertainty analysis, *Hydrol. Res.*, 40, 234–248, 2009.
- Schindler, D. W.: Evolution of phosphorus limitation in lakes, *Science*, 195, 260–262, 1977.
- Smith, V., Tilman, G., and Nekola, J.: Eutrophication: impacts of excess nutrient inputs on freshwater, marine, and terrestrial ecosystems, *Environ. Pollut.*, 100, 179–196, 1999.
- Straile, D., Jöhnk, K., and Rosssknecht, H.: Complex effects of winter warming on the physicochemical characteristics of a deep lake, *Limnol. Oceanogr.*, 48, 1432–1438, doi:10.4319/lo.2003.48.4.1432, 2003a.

- Straile, D., Livingstone, D. M., Weyhenmeyer, G. A., and George, D. G.: The response of freshwater ecosystems to climate variability associated with the North Atlantic Oscillation, in: *The North Atlantic Oscillation: Climatic Significance and Environmental Impact*, edited by: Hurrell, J. W., Kushnir, Y., Ottersen, G., and Visbeck, M., American Geophysical Union, Washington, D.C., USA, 263–279, 2003b.
- Tirok, K. and Gaedke, U.: The effect of irradiance, vertical mixing and temperature on spring phytoplankton dynamics under climate change: long-term observations and model analysis, *Oecologia*, 150, 625–642, 2007.
- Trenberth, K., Jones, P., Ambenje, P., Bojariu, R., Easterling, D., Klein Tank, A., Parker, D., Rahimzadeh, F., Renwick, J., Rusticucci, M., Soden, B., and Zhai, P.: Observations: surface and atmospheric climate change, in: *Climate Change 2007: the Physical Science Basis*, contribution of Working Group I to the Fourth Assessment Report of the Intergovernmental Panel on Climate Change, edited by: Solomon, S., Qin, D., Manning, M., Chen, Z., Marquis, M., Averyt, K., Tignor, M., and Miller, H., Cambridge University Press, 235–336, 2007.
- Ulén, B., Bechmann, M., Fölster, J., Jarvie, H. P., and Tunney, H.: Agriculture as a phosphorus source for eutrophication in the north-west European countries, Norway, Sweden, United Kingdom and Ireland: a review, *Soil Use Manage.*, 23, 5–15, doi:10.1111/j.1475-2743.2007.00115.x, 2007.
- Weyhenmeyer, G. A., Adrian, R., Gaedke, U., Livingstone, D. M., and Maberly, S. C.: Response of phytoplankton in European lakes to a change in the North Atlantic Oscillation, *Verh. Intern. Verein. Limnol.*, 28, 1436–1439, 2002.
- Whitehead, P. G., Wilby, R. L., Batterbee, R. W., Kernan, M., and Wade, A. J.: A review of the potential impacts of climate change on surface water quality, *Hydrolog. Sci. J.*, 54, 101–123, doi:10.1623/hysj.54.1.101, 2009.
- Wilhelm, S. and Adrian, R.: Impact of summer warming on the thermal characteristics of a polymictic lake and consequences for oxygen, nutrients and phytoplankton, *Freshwater Biol.*, 53, 226–237, doi:10.1111/j.1365-2427.2007.01887.x, 2008.
- Winder, M. and Hunter, D. A.: Temporal organization of phytoplankton communities linked to physical forcing, *Oecologia*, 156, 179–192, doi:10.1007/s00442-008-0964-7, 2008.
- Zohary, T., Padisák, J., and Naselli-Flores, L.: Phytoplankton in the physical environment: beyond nutrients, at the end, there is some light, *Hydrobiologia*, 639, 261–269, doi:10.1007/s10750-009-0032-2, 2010.

**Table 1.** Input and output data, and observed lake data for the calibration of the MyLake model and statistics for the ANOVA and PCA analyses.

MyLake inputs	MyLake outputs (selected)	Observed lake data
<i>Meteorological data</i> <sup>a, f</sup>	<i>Calibration purpose</i> <sup>a</sup>	<i>Calibration purpose</i>
Air temperature	(every 0.5 m by depth)	(at 7 depths)
Global radiation	Water temperature	Water temperature <sup>a</sup>
Cloud cover	TP concentration	TP concentration <sup>b</sup>
Precipitation	SRP concentration	SRP concentration <sup>b</sup>
Relative humidity	Chlorophyll concentration	Chlorophyll <i>a</i> concentration <sup>b</sup>
Wind speed		
<i>Runoff</i> <sup>a, g</sup>	<i>Statistics calculated for PCA</i>	
Flow volume	(volume weighted mean 0–3.0 m)	
Water temperature	TP content	
Suspended matter flux	Mean surface chlorophyll	
TP flux	Light attenuation coefficient	
	Thermocline depth	
	Mean epilimnion temperature <sup>e</sup>	
<i>Statistics calculated for PCA</i>	Ice thickness	
Global radiation <sup>c</sup>		
Cloud cover <sup>c</sup>		
Air temperature <sup>c</sup>		
Wind speed <sup>c</sup>		
Precipitation <sup>c</sup>		
Flow volume <sup>c</sup>		
Winter air temperature <sup>d, h</sup>		
Summer air temperature <sup>d, i</sup>		
Winter precipitation <sup>d, h</sup>		
Summer precipitation <sup>d, i</sup>		
Suspended matter flux <sup>d</sup>		
TP flux <sup>d</sup>		

<sup>a</sup> Daily data. <sup>b</sup> Biweekly data. <sup>c</sup> Annual mean. <sup>d</sup> Water year basis (October through September). <sup>e</sup> Volume weighted above thermocline depth. <sup>f</sup> Inferred with data from Ås meteorological station. <sup>g</sup> Inferred with data from Skuterud monitoring station and land use. <sup>h</sup> December through March, mean. <sup>i</sup> June through September, mean.



**Table 2.** Parameters involved in calibration based on two-stage Markov chain Monte Carlo (MCMC) application (first stage for three parameters using 2000 MCMC steps with 1000 steps for burn-in and second stage for eight parameters using 30 000 MCMC steps with 10 000 for burn-in). MyLake equation numbers refer to the original model description (Saloranta and Andersen, 2007). Median values were chosen among the posterior parameter distribution.

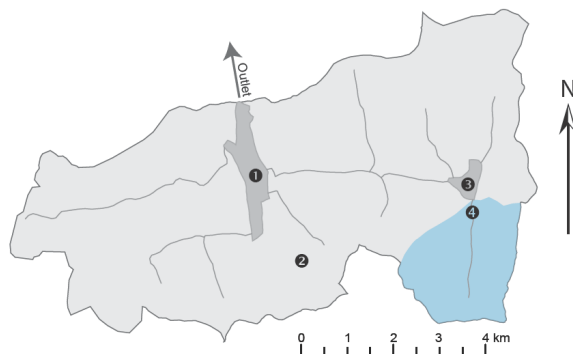
Parameter	Value	Equation	Unit	Prior distribution
<i>Physical parameters</i>				
Open-water vertical diffusion coefficient	$7.56 \times 10^{-3}$	Eq. (10)	$\text{m}^2 \text{day}^{-1}$	$0.00706 \times (1.18 \times (10^x) \times 10^{-6})^{0.56}$ where $x \sim N(0,1)$
Wind sheltering coefficient	$7.96 \times 10^{-2}$	Eq. (13)	–	$1 - e^{-0.3 \times 1.18 \times 10^x \times 10^{-6}}$ where $x \sim N(0,1)$
Minimum possible stability frequency	$9.31 \times 10^{-5}$	Eq. (10)	$\text{s}^{-2}$	$1.14 \times 10^{-4} \times 10^x$ where $x \sim N(0,1)$
<i>Biological and chemical parameters</i>				
PAR saturation level for photosynthesis	$2.04 \times 10^{-4}$	Eq. (29)	$\text{mol quanta m}^{-2} \text{s}^{-1}$	$3.00 \times 10^{-5} \times 10^x$ where $x \sim N(0,0.5)$
Particle resuspension mass transfer coefficient	$2.94 \times 10^{-5}$	§ 2.7	$\text{m day}^{-1}$ , dry	$3.63 \times 10^{-7} \times 10^x$ where $x \sim N(0,0.5)$
Settling velocity for suspended matter	1.38	Eq. (20)	$\text{m day}^{-1}$	$0.25 \times 10^x$ where $x \sim N(0,0.5)$
Settling velocity for chlorophyll	$7.31 \times 10^{-2}$	Eq. (20)	$\text{m day}^{-1}$	$0.200 \times 10^x$ where $x \sim N(0,0.5)$
Specific mortality rate of phytoplankton	$1.86 \times 10^{-1}$	Eq. (26)	$\text{day}^{-1}$	$0.200 \times 10^x$ where $x \sim N(0,0.5)$
Max specific growth rate of phytoplankton	1.76	Eq. (27)	$\text{day}^{-1}$	$1.50 \times 10^x$ where $x \sim N(0,0.5)$
Half saturation inorganic phosphorus concentration for Langmuir isotherm	$9.99 \times 10^2$	Eq. (24)	$\text{mg m}^{-3}$	$2500 \times 10^x$ where $x \sim N(0,0.5)$
Saturation level for inorganic phosphorus isotherm	$4.96 \times 10^4$	Eq. (24)	$\text{mg kg}^{-1}$	$8000 \times 10^x$ where $x \sim N(0,0.5)$

**Table 3.** Model scenarios. The scenarios comprise either original input data (denoted O), pseudo repeated average year based on 16 years of input data (denoted R), or a combination of O and R.

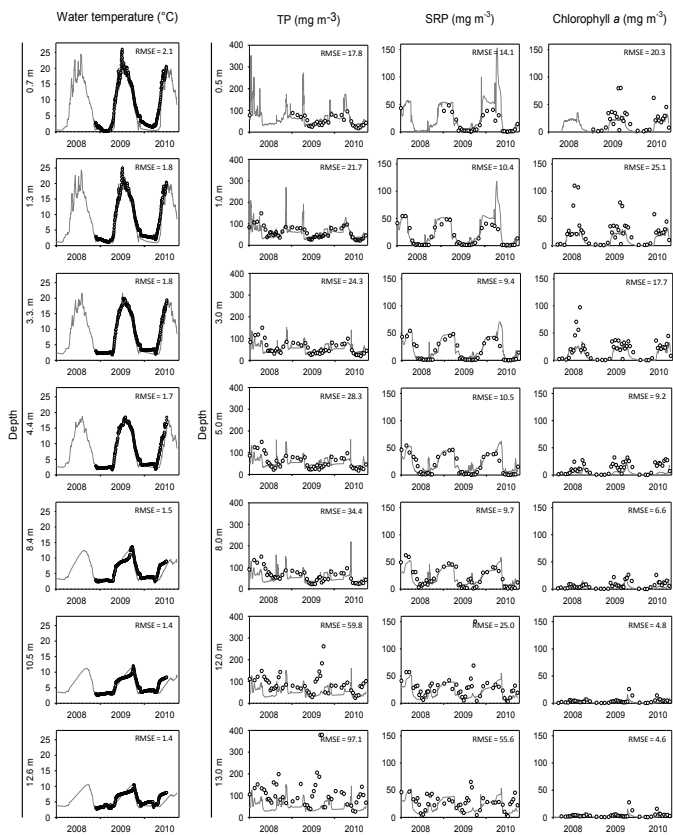
Model scenarios	A	B	C	D
<b>Model inputs</b>				
<i>Weather</i>				
Global radiation	O	R	O	R
Cloud cover	O	R	O	R
Relative humidity	O	R	O	R
Wind speed	O	R	O	R
Air pressure	O	R	O	R
Air temperature	O	R	O	R
Precipitation	O	R	O	R
<i>Runoff</i>				
Flow volume	O	O	R	R
Suspended matter flux	O	O	R	R
Inflow water temperature	O	O	R	R
TP flux	O	O	R	R

**Table 4.** Summary results for six two-factor within-subject ANOVA ( $n = 16 \times 2 \times 2$ ). Significance of additive and interactive effects of weather (two levels, original O or repeated average R) and loading (two levels, original O or repeated average R) inputs on the six selected model outputs are shown using  $P$  value. High  $P$  values for interactive effects for all six tests indicate pure additive two-factor model and test for each factor separately. The variance decomposition shows the relative contributions of each factor and interaction to the total sum of squares with the between-year error term factored out.

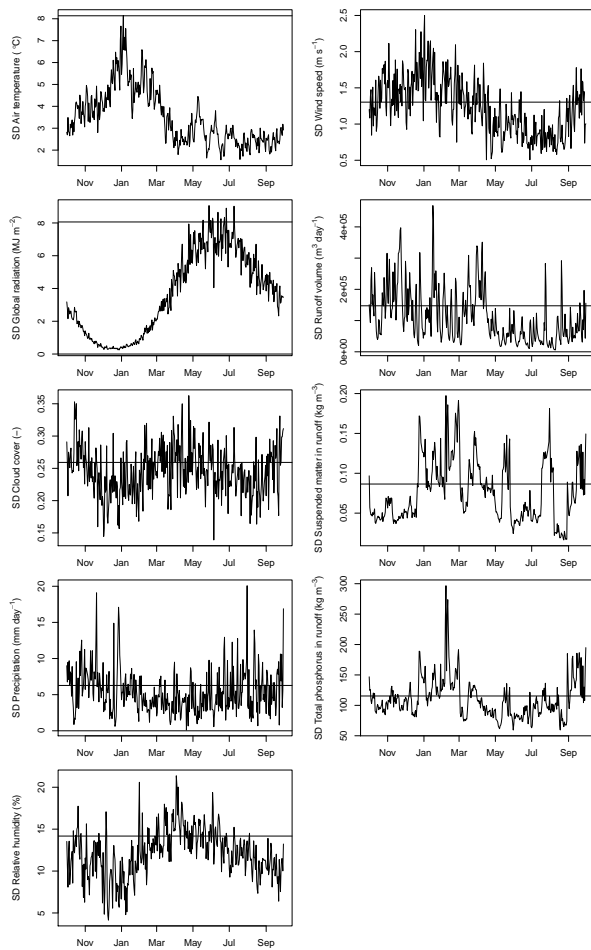
Model outputs	F-value			P-value			Variance decomposition		
	W	L	W $\times$ L	W	L	W $\times$ L	W	L	W $\times$ L
Ice thickness	31.93	0.13	0.34	< 0.000	0.723	0.565	0.413	0.002	0.004
Thermocline depth	0.27	0.91	1.93	0.605	0.346	0.172	0.006	0.019	0.040
Epilimnion temperature	3.19	4.91	0.39	0.081	0.032	0.537	0.060	0.092	0.007
TP content	0.81	1.26	0.02	0.374	0.268	0.888	0.017	0.027	0.000
Surface chlorophyll	0.05	18.76	0.14	0.827	< 0.000	0.713	0.001	0.293	0.002
Light attenuation coefficient	0.78	14.82	0.23	0.382	< 0.000	0.631	0.013	0.244	0.004



**Figure 1.** Map of catchment draining into (1) Lake Årungen, with the (2) weather station at Ås, (3) Lake Østensjøvannet and (4) the Skuterud monitoring station. Runoff data from the Skuterud sub-catchment (indicated by dark shading) are scaled up according to land area and usage of the rest of the catchment to estimate the total loading to Lake Årungen.



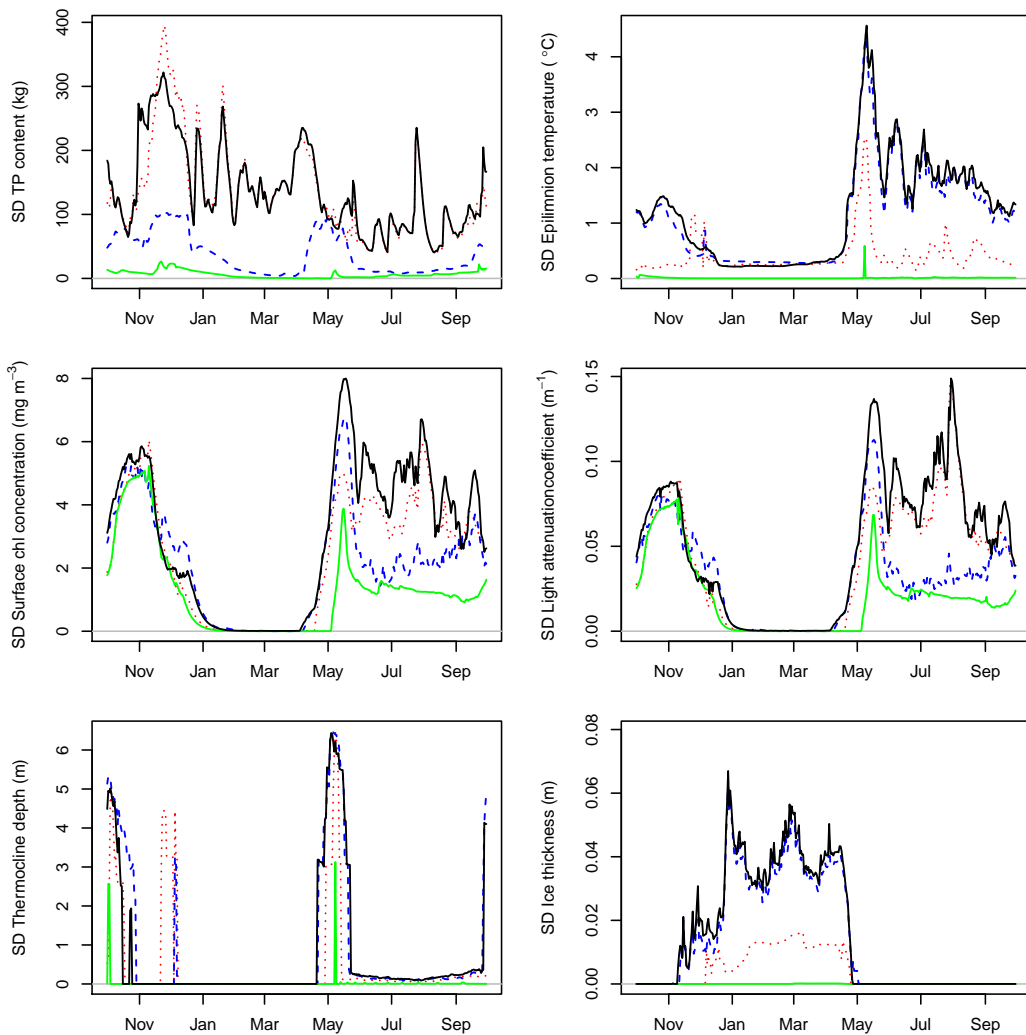
**Figure 2.** Simulated (line) and observed (circles) lake state variables for water temperature, TP, SRP, and chlorophyll *a* concentrations at seven depths. RMSE values are in their respective original units, and they are shown only for the presentation purpose and were not used during the calibration. See text for the details of calibration procedure.



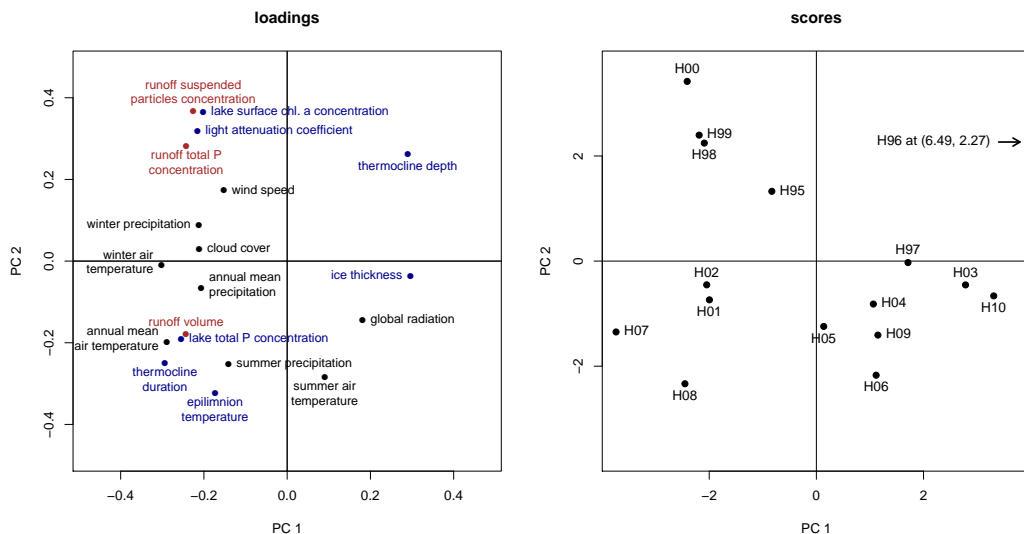
**Figure 3.** Input variability shown as standard deviations on a water year scale (day-by-day, year-to-year variation,  $n = 16$ , curves), with the overall 16 year standard deviations indicated by horizontal lines.







**Figure 4.** Output variability shown as standard deviations on a water year scale (day-by-day, year-to-year variation,  $n = 16$ ) for scenarios A (black solid line or top solid line), B (red dotted line), C (blue dashed line), and D (green solid line or bottom solid line). Consequently, each panel illustrates  $4 \times 365$  standard deviation values, and each standard deviation is based on sample size  $n = 16$ . See Table 3 for scenario configurations.



**Figure 5.** Principal component analysis (PCA) loadings for the two greatest components (explaining 39.0 % and 16.5 % of variance) and scores for the two components for 16 water years (letters). Black coding for PC loading indicates the weather input, brown the runoff input, and blue the lake simulation.