

Interactive comment on “Spatial and temporal variability of rainfall in the Nile Basin” by C. Onyutha and P. Willems

C. Onyutha and P. Willems

conyutha@gmail.com

Received and published: 31 December 2014

The authors are grateful to the reviewer for identifying the areas that required attention and/or correction. The authors confirm that in the revised version of the manuscript, the reviewer’s comments will be addressed as follow:

1)Figure 1 will be replaced by the one below to clearly show the rainfall stations in the three groups (A, B, C) as suggested.

» See Figure 1

2)The caption of Figure 2 will be edited to include ‘station 7’ as suggested. Also on Figure 2, the up and down arrows that were missing (though mentioned in line 3 on

Full Screen / Esc

Printer-friendly Version

Interactive Discussion

Discussion Paper



page 12) in the discussion paper will be included as below.

» See Figure 2

Please also note the supplement to this comment:

<http://www.hydrol-earth-syst-sci-discuss.net/11/C5873/2014/hessd-11-C5873-2014-supplement.pdf>

Interactive comment on Hydrol. Earth Syst. Sci. Discuss., 11, 11945, 2014.

HESD

11, C5873–C5876, 2014

Interactive
Comment

Full Screen / Esc

Printer-friendly Version

Interactive Discussion

Discussion Paper



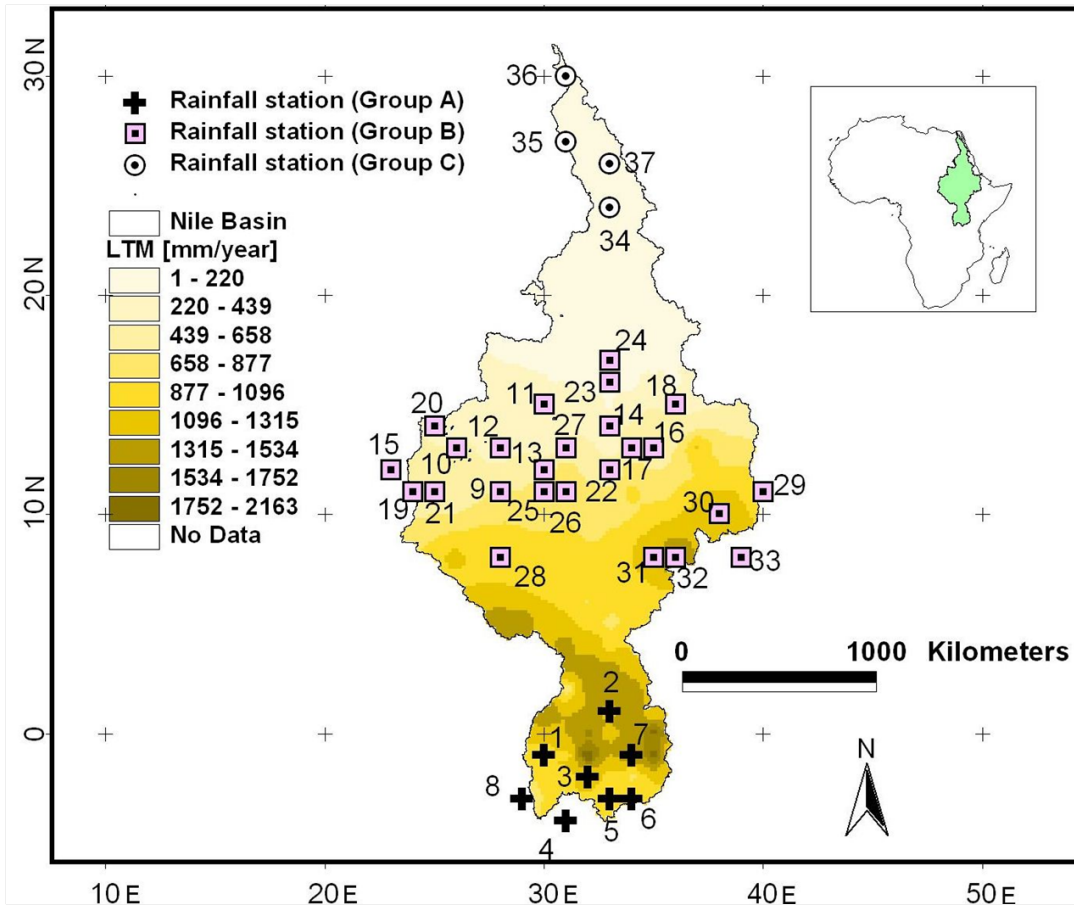


Fig. 1. Locations of the selected meteorological stations (see Table 1 for details) in the Nile Basin; the background is based on the LTM.

Full Screen / Esc

Printer-friendly Version

Interactive Discussion

Discussion Paper



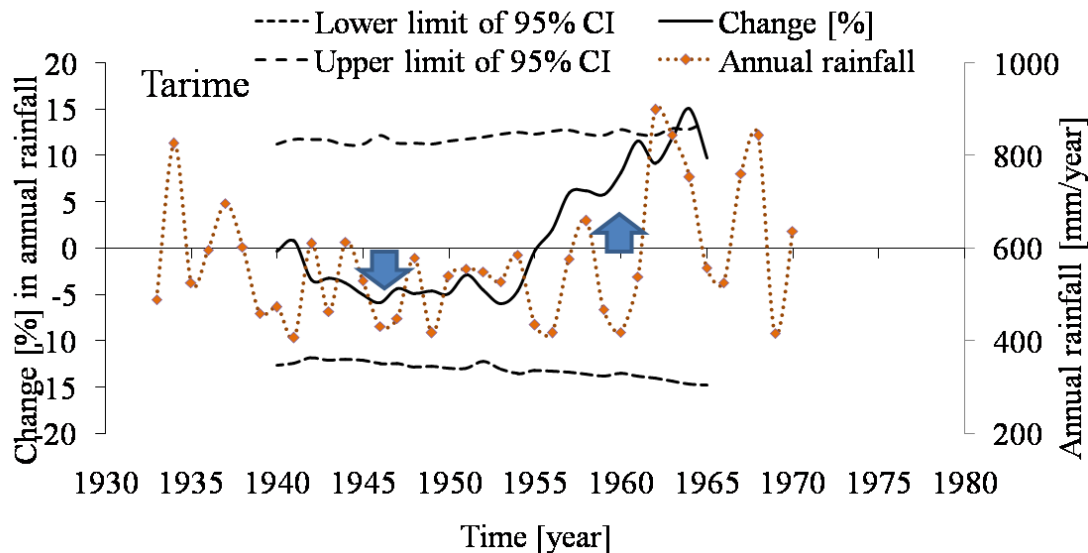


Fig. 2. Annual rainfall at station 7 and QPM results for a time slice of 15 years and period 1935–1970.

Full Screen / Esc

Printer-friendly Version

Interactive Discussion

Discussion Paper

