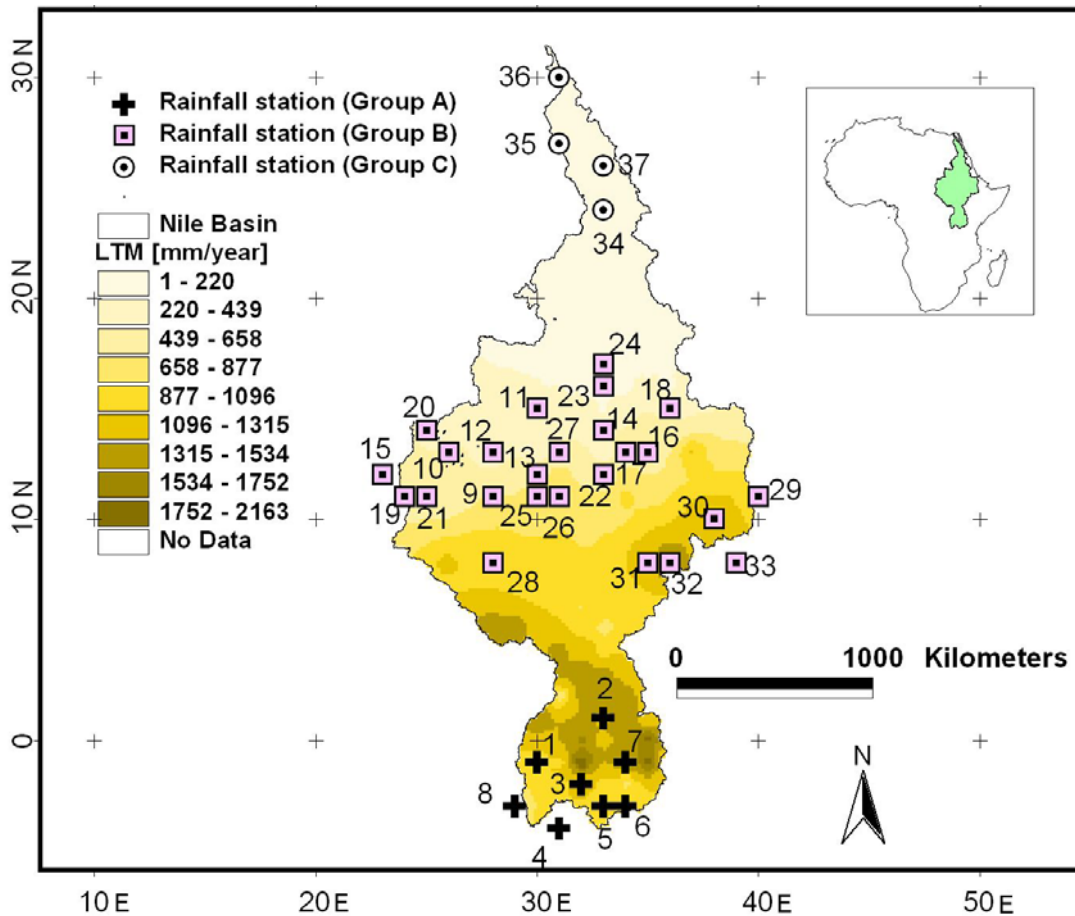


1 **Reply to comment of Anonymous Referee #1 on “Spatial and**  
 2 **temporal variability of rainfall in the Nile Basin” by C. Onyutha**  
 3 **and P. Willems**

4 The authors are grateful to the reviewer for identifying the areas that required attention and/or  
 5 correction. The authors confirm that in the revised version of the manuscript, the reviewer’s  
 6 comments will be addressed as follow:  
 7

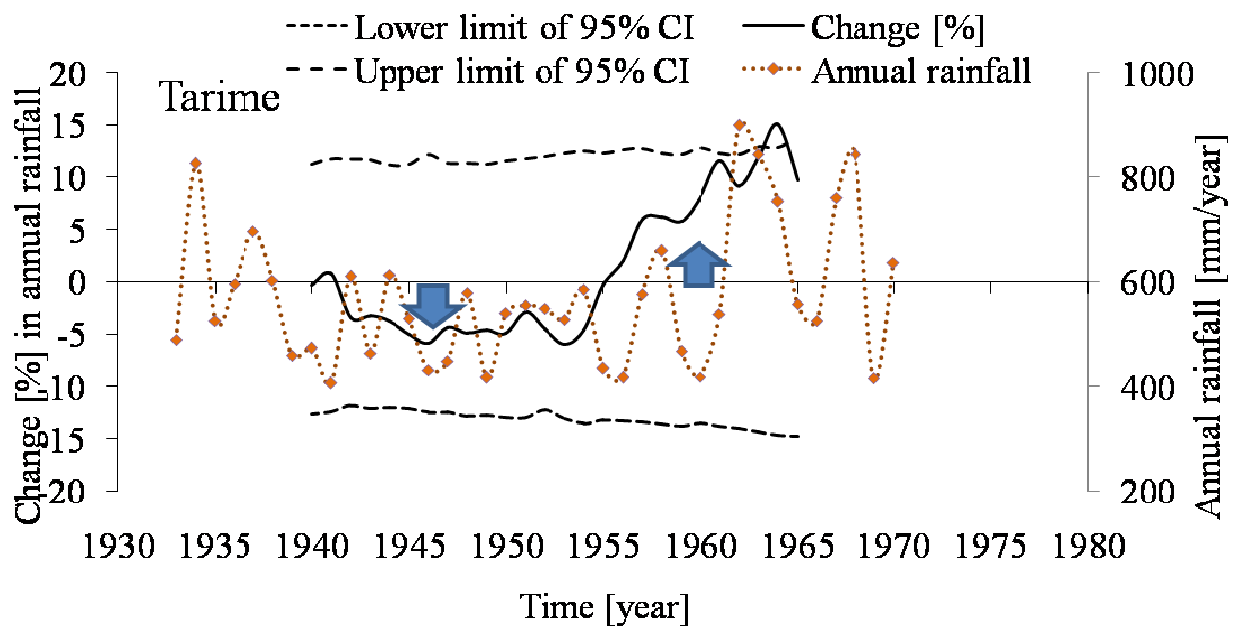
- 8 1) **Figure 1** will be replaced by the one below to clearly show the rainfall stations in the three  
 9 groups (A, B, C) as suggested.  
 10



11 **Figure 1.** Locations of the selected meteorological stations (see Table 1 for details) in the Nile  
 12 Basin; the background is based on the LTM.  
 13

14

- 15 2) The caption of **Figure 2** will be edited to include ‘station 7’ as suggested (see line 19 of this  
 16 reply). Also on **Figure 2**, the up and down arrows that were missing (though mentioned in line  
 17 3 on page 12) in the discussion paper will be included as below.



18  
 19 **Figure 2.** Annual rainfall at station 7 and QPM results for a time slice of 15 years and period  
 20 1935–1970.