

Interactive comment on “Comparison of TRMM, MPEG and CFSR rainfall estimation with the ground observed data for the Lake Tana Basin, Ethiopia” by A. W. Worqlul et al.

A. W. Worqlul et al.

abeyou_wale@yahoo.com

Received and published: 14 October 2014

Here with i have attached response letter to Anonymous Referee #2 for Interactive comment on “Comparison of TRMM, MPEG and CFSR rainfall estimation with the ground observed data for the Lake Tana Basin, Ethiopia” by A. W. Worqlul et al.

Please also note the supplement to this comment:

<http://www.hydrol-earth-syst-sci-discuss.net/11/C4459/2014/hessd-11-C4459-2014-supplement.pdf>

Full Screen / Esc

Printer-friendly Version

Interactive Discussion

Discussion Paper

Interactive
Comment

Full Screen / Esc

Printer-friendly Version

Interactive Discussion

Discussion Paper



Interactive
Comment

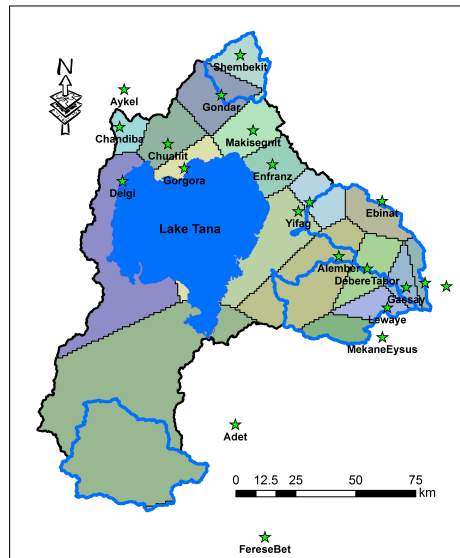


Fig. 1.

Full Screen / Esc

Printer-friendly Version

Interactive Discussion

Discussion Paper

