

Interactive comment on “Comparison of TRMM, MPEG and CFSR rainfall estimation with the ground observed data for the Lake Tana Basin, Ethiopia” by A. W. Worqlul et al.

A. W. Worqlul et al.

abeyou_wale@yahoo.com

Received and published: 14 October 2014

Here with i have attached response letter to Anonymous Referee #2 for Interactive comment on “Comparison of TRMM, MPEG and CFSR rainfall estimation with the ground observed data for the Lake Tana Basin, Ethiopia” by A. W. Worqlul et al.

Please also note the supplement to this comment:

<http://www.hydrol-earth-syst-sci-discuss.net/11/C4459/2014/hessd-11-C4459-2014-supplement.pdf>

C4459

Interactive comment on Hydrol. Earth Syst. Sci. Discuss., 11, 8013, 2014.

C4460

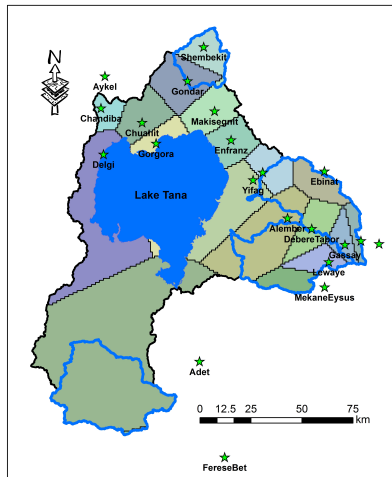


Fig. 1.

C4461