



Estimating degree day factors from MODIS for snowmelt runoff modeling

Z. H. He et al.

Estimating degree day factors from MODIS for snowmelt runoff modeling

Z. H. He¹, J. Parajka², F. Q. Tian¹, and G. Blöschl²

¹State Key Laboratory of Hydrosience and Engineering, Department of Hydraulic Engineering, Tsinghua University, Beijing 100084, China

²Institute for Hydraulic and Water Resources Engineering, Vienna University of Technology, Vienna, Austria

Received: 11 July 2014 – Accepted: 15 July 2014 – Published: 25 July 2014

Correspondence to: F. Q. Tian (tianfq@tsinghua.edu.cn)

Published by Copernicus Publications on behalf of the European Geosciences Union.

[Title Page](#)

[Abstract](#)

[Introduction](#)

[Conclusions](#)

[References](#)

[Tables](#)

[Figures](#)



[Back](#)

[Close](#)

[Full Screen / Esc](#)

[Printer-friendly Version](#)

[Interactive Discussion](#)



and uncertainty in parameter calibration due to limited understanding of the complex hydrological processes.

Melt runoff models generally fall into two categories: energy balance models, and temperature-index models (Rango and Martinec, 1979; Howard, 1996; Kane et al., 1997; Singh et al., 2000; Fierz et al., 2003). Temperature-index models operating on a basin wide scale are much more popular for operational purposes due to the following four reasons (Hock, 2003): (1) wide availability of air temperature data, (2) relatively easy interpolation and forecasting possibilities of air temperature, (3) generally good model performance and (4) computational simplicity. The temperature index model is based on an assumed relationship between ablation and air temperature and calculates the daily snowmelt depth, M (mm d^{-1}), by multiplying the degree-day temperature, $T - T_o$ ($^{\circ}\text{C d}^{-1}$), with the degree-day factor of snow, DDF_S ($\text{mm d}^{-1} ^{\circ}\text{C}^{-1}$) (Howard, 1996). T_o is a threshold temperature for snowmelt. The temperature index model implies a consistent contribution of each of the heat balance components (including radiation, sensible heat, latent heat and ground heat fluxes). Any changes in climate conditions and the underlying basin characteristics will affect the relative contributions of the heat balance components and cause variations of the DDF_S (Lang and Braun, 1990; Ohmura, 2001). The study of Kuusisto (1980) in Finland found DDF_S to increase sharply in early April, approximately doubling during this month due to increasing solar radiation. Singh and Kumar (1996) and Singh et al. (2000) demonstrated a seasonal decrease of DDF_S with increasing albedo due to seasonal changes of land surface characteristics. Spatial variations of basin topography, such as elevation, terrain slope, aspect and terrain shading change the spatial energy conditions for snowmelt and lead to significant variations of DDF_S (Marsh et al., 2012; Bormann et al., 2014). Generally, regions with a large contribution of sensible heat flux to the heat balance tend to have low degree-day factors (Hock, 2003). DDF_S are expected to increase with increasing elevation and increasing snow density (Li and Williams, 2008). Forest regions often have lower values of DDF_S than open regions (Rango and Martinec, 1995). The

HESSD

11, 8697–8735, 2014

Estimating degree day factors from MODIS for snowmelt runoff modeling

Z. H. He et al.

Title Page

Abstract

Introduction

Conclusions

References

Tables

Figures

◀

▶

◀

▶

Back

Close

Full Screen / Esc

Printer-friendly Version

Interactive Discussion



identification of DDF_S has been an important yet complex issue for the application of the temperature-index model for snowmelt runoff modeling.

Quite a few studies estimated the degree-day factor from observed snow water equivalent (SWE) data. Martinec (1960) measured SWE with radioactive cobalt and computed the DDF_S as the ratio of SWE and degree-day temperature. Rango and Martinec (1979, 1995) obtained degree-day factors from empirical regressions with snow density. Kane et al. (1997) estimated degree-day factors by calibration against measured point SWE in a 2.2 km^2 catchment. Daly et al. (2000) merged interpolated measurements of point SWE with snow covered area derived from satellite data to obtain spatial snow water equivalent and estimated spatially distributed DDF_S by calibration to spatial snow water equivalent. Sturm et al. (2010) estimated snow density as the ratio of point measured SWE and snow depth data, and Bormann et al. (2013, 2014) coupled this method with the empirical relationship between DDF_S and snow density of Rango and Martinec (1995) to estimate daily variable DDF_S . In these methods, detailed observations of snow water equivalent in the basin are needed. However, observations of snow water equivalent are only representative of a small subset of the spatial domain, and observations tend to be scarce at high elevations (Hamlet et al., 2005).

Another method of estimating the DDF_S is treating it as a hydrologic model parameter and calibrating it on observed hydrological data. Most commonly, runoff is used for calibrating DDF_S (Hinzman and Kane, 1991; Klok et al., 2001; Luo et al., 2013). The drawback is that catchment runoff is not usually a good indicator of the spatial snow cover distribution (Blöschl et al., 1991a, b; Bach et al., 2003; Liu et al., 2012 etc.). Advances in remotely sensing techniques help provide more practical information for the calibration of DDF_S . There have been numerous comparisons between satellite snow cover products (e.g. Hall et al., 2000, 2002; Maurer et al., 2003; Lee et al., 2005; Hall and Riggs, 2007). In particular, MODIS snow covered area (SCA) products have been demonstrated to be of good quality and have been widely used in alpine hydrological modeling (Klein and Barnett, 2003; Dery et al., 2005; Andreadis and Lettenmaier,

HESSD

11, 8697–8735, 2014

Estimating degree day factors from MODIS for snowmelt runoff modeling

Z. H. He et al.

[Title Page](#)

[Abstract](#)

[Introduction](#)

[Conclusions](#)

[References](#)

[Tables](#)

[Figures](#)



[Back](#)

[Close](#)

[Full Screen / Esc](#)

[Printer-friendly Version](#)

[Interactive Discussion](#)



Estimating degree day factors from MODIS for snowmelt runoff modeling

Z. H. He et al.

[Title Page](#)

[Abstract](#)

[Introduction](#)

[Conclusions](#)

[References](#)

[Tables](#)

[Figures](#)



[Back](#)

[Close](#)

[Full Screen / Esc](#)

[Printer-friendly Version](#)

[Interactive Discussion](#)



2006; Wang et al., 2008; Georgievsky, 2009). Subsequently, a number of studies tested the potential of MODIS snow cover data for calibrating and validating snowmelt models (e.g. Dery et al., 2005; Tekeli et al., 2005; Udnaes et al., 2007; Parajka and Blöschl, 2008a). A review is provided by Parajka and Blöschl (2012). The authors generally
 5 found that including snow cover data in the model calibration improved the snow simulations. Most of these studies calibrated the DDF_S on combined objective functions involving observed runoff and snow cover data. This makes it hard to obtain spatially variable DDF_S because of the limited availability of spatially distributed runoff data. It is also important to note that the calibration of DDF_S can be significantly affected by
 10 other model parameters due to the interdependency of the parameters and the nature of objective functions that reflect the joint effects of all the model parameters in a holistic way. The optimization procedures may there induce significant uncertainties in the parameter estimates (Kirchner, 2006), if insufficient attention is paid to the physical catchment characteristics (including elevation, vegetation coverage, and snow density etc.) affecting the value of DDF_S (Bormann et al., 2014).

In mountain watersheds, distributed hydrologic models are more widely applied than lumped models due to the large spatial variability. Degree-day factors estimated from point measurements or spatially uniform values from calibration are not likely representative for the entire catchment. An increasing need for spatially distributed estimation of
 20 DDF_S has been identified (Hock, 1999; Nester et al., 2011). However, only few studies have attempted to develop temperature-index methods in a distributed manner (Cazorzi and DallaFontana, 1996; Williams and Tarboton, 1999; Daly et al., 2000 etc.). Most of them computed the DDF_S as a function of a radiation index, snow albedo, rainfall rate, elevation, snow density or wind speed, which are heavily affected by topography, thus addressing the spatial variability of snowmelt in mountain terrain (Dunn and Colohan,
 25 1999; Hock, 2003). However, due to the complex interactions between atmospheric and surface characteristics affecting the degree-day factor, the relationship between DDF_S and these characteristics is still not very well understood.

Estimating degree day factors from MODIS for snowmelt runoff modeling

Z. H. He et al.

[Title Page](#)[Abstract](#)[Introduction](#)[Conclusions](#)[References](#)[Tables](#)[Figures](#)[◀](#)[▶](#)[◀](#)[▶](#)[Back](#)[Close](#)[Full Screen / Esc](#)[Printer-friendly Version](#)[Interactive Discussion](#)

The objective of this study is to propose a new method for estimating spatial patterns of DDF_S from MODIS data in mountain catchments. In comparison to traditional methods, the DDF_S is not calibrated to observed runoff and snow water equivalent data, but directly estimated from MODIS snow covered area and snow depth data alone. Snow depths can be more widely measured in the field than snow water equivalent. For example, Environment Canada gauges snow depth at 1556 sites, but snow water equivalent only at 27 sites. Similarly, the US Weather Service and the Swiss Service measure many more depths than water equivalents (Johnson and Schaefer, 2002; Zhou et al., 2005; Sturm et al., 2010). The new proposed method differs from existing estimation methods of DDF_S in a number of ways: first, snow water equivalent is estimated from MODIS snow cover, snow depths and precipitation data, so there is no need for snow water equivalent measurements which are difficult to obtain in most mountain watersheds. Second, DDF_S is estimated on a subcatchment scale rather than on a point scale as in most traditional estimation methods. Third, the study extends the idea of partitioning hydrological time series to explore hidden hydrological information of He et al. (2014) to the case of snow data. The methodology is tested in a mountain basin in Austria.

The remainder of this paper is organized in the following way: Sect. 2 details the estimation method of spatial snow density and the snowmelt degree-day factor, as well as the stepwise calibration method for the model parameters. Section 3 contains a description of the geographic and hydrological characteristics of the study basin, including the main data sources and data preprocessing. Section 4 presents the main simulation results and comparisons of the hydrologic model performance using DDF_S estimated from snow data and DDF_S calibrated on runoff. Finally, Sect. 5 provides a summary of the study, and discusses possible sources of uncertainty in the results and further applications of the new estimation methods of degree-day factors.

2 Methodology

The main idea of estimating the degree-day factor is as follows. The volume of snow for each subcatchment and each day is estimated using MODIS SCA data and ground based snow depth time series. The snow volume time series are partitioned in time into three groups, based on the daily air temperatures: days with snow accumulation (when temperatures are below a threshold), days with ablation (when temperatures are above a different threshold) and days where both processes occur (when temperatures are between the thresholds). Snow density is estimated from the days with snow accumulation as the ratio of measured precipitation and changes in snow volume. The degree-day factor is estimated from the days with ablation as the ratio of measured degree-day temperature and changes in snow water equivalent (product of snow volume and density).

For comparison, DDF_S is calibrated on runoff using a semi-distributed hydrological model-THREW model which has been applied in several studies (Tian et al., 2006, 2008, 2012; Mou et al., 2008; Li et al., 2012). The calibration follows the stepwise procedure developed by He et al. (2014) but was slightly modified because of the local characteristic of the study basin (see Sect. 2.2). The study basin is divided into 95 subcatchments for the simulations.

The estimated degree-day factors are tested by simulations of basin runoff and snow cover patterns. The study period for which the analyses are performed is ten years, 2001–2010.

2.1 Estimation of degree day factor from snow data

The observed snow data used to estimate the degree-day factor, DDF_S , are the MODIS snow covered area (SCA) products and ground-based snow depths. Firstly, we obtain the volume per area of snow in each subcatchment and for each day by $V_s = SCA \cdot D_s$, where D_s is the average snow depth within the subcatchment estimated from pixel values by interpolation. The interpolated snow depths tend to overestimate the snow

HESSD

11, 8697–8735, 2014

Estimating degree day factors from MODIS for snowmelt runoff modeling

Z. H. He et al.

Title Page

Abstract

Introduction

Conclusions

References

Tables

Figures

⏪

⏩

◀

▶

Back

Close

Full Screen / Esc

Printer-friendly Version

Interactive Discussion



covered area, therefore the multiplication with SCA is needed to compensate for the biases introduced by the interpolation. In a next step, the change of snow water equivalent (SWE) between two days, $\frac{dSWE}{dt} = \rho_s \cdot \frac{dV_s}{dt}$, is attributed to three snow processes according to Eqs. (1a)–(1c).

$$\rho_s \cdot \frac{dV_s}{dt} = \begin{cases} P, & \text{for } T < T_S & \text{Accumulation} & (1a) \\ P_S - M, & \text{for } T_S \leq T \leq T_R & \text{Combination} & (1b) \\ -DDF \cdot (T - T_m), & \text{for } T > T_R & \text{Ablation} & (1c) \end{cases}$$

where, ρ_s is the snow density, P is daily precipitation, P_S is daily snowfall, M is daily snowmelt depth, T_S is the temperature threshold below which all precipitation is in the form of snowfall, T_R is the temperature threshold above which all precipitation is liquid, and T_m is the temperature threshold controlling the occurrence of melt. T_m usually falls between T_S and T_R . The value of the three temperature thresholds are set as $T_m = T_S = 0.0^\circ\text{C}$ and $T_R = 2.5^\circ\text{C}$ in this study following Parajka et al. (2007). The V_s time series are partitioned into three segments, i.e. accumulative segment, a combination segment and an ablative segment according to Eqs. (1a)–(1c).

The snow density (ρ_s) is calculated from the days with accumulation based on the observed V_s and P according to Eq. (1a). As the snow cover volume can still change after snowfall events due to gravity and condensation, snowfall events that produce a stable snow cover volume are selected for the estimation of snow density. Therefore, snowfall events in the accumulative segment that ended by at least three no-snowfall days, and where the relative difference of the V_s value between the last three no-snowfall days is lower than 10%, are selected for the calculation of snow density. In these events, the cumulative snowfall is the sum (ΔP_s) of the daily precipitation values, and the change of snow cover volume (ΔV_s^*) is the difference of the V_s values between the last no-snowfall day and the first snowfall day. Snow density in each event is obtained as $\rho_s = \Delta P_s / \Delta V_s^*$. This calculation is carried out for each subcatchment. A representative value of the density for each subcatchment is estimated as the average of all event values, neglecting any changes of density during snow melt. While this is a simplification,

Estimating degree day factors from MODIS for snowmelt runoff modeling

Z. H. He et al.

Title Page

Abstract

Introduction

Conclusions

References

Tables

Figures

⏪

⏩

◀

▶

Back

Close

Full Screen / Esc

Printer-friendly Version

Interactive Discussion



it should be noted that the melt period is often interrupted by accumulation events, thus the differences between accumulation and ablation densities are not considered to be very large.

The snowmelt degree-day factor DDF_S is calculated from days with ablation based on changes in the snow water equivalent and air temperatures according to Eq. (1c). The change of snow water equivalent between days is calculated as $\Delta V_s \cdot \rho_s$, where the density ρ_s estimated above is used. The degree-day temperature is calculated as the difference between the daily temperature (T) and the threshold value (T_m). Daily DDF_S value are then estimated as $DDF_S = \frac{dV_s}{dt} \cdot \frac{\rho_s}{T - T_m}$. Again, a representative value of the degree day factor for each subcatchment is estimated as the average of all event values. Both the estimations of snow density and DDF_S are carried out in a calculation period, 2001–2005.

2.2 Calibration of degree day factor on runoff by a hydrologic model

The runoff generation processes simulated by the THREW model includes groundwater baseflow, rainfall runoff, snowmelt and glacier melt. Rainfall runoff is simulated by a Xin'anjiang module, which adopts a water storage capacity curve to describe the non-uniform distribution of water storage capacity in a subcatchment (Zhao, 1992). The storage capacity curve is determined by two parameters (spatial averaged storage capacity WM and shape coefficient B). Rainfall runoff is generated on areas where the storage capacity is reached. The remainder of the rainfall infiltrates into the soil and becomes an additional contribution to groundwater baseflow which is calculated by two outflow coefficients (KKA and KKD). Snow and glacier melt are simulated by a degree-day model with different degree-day factors (DDF_S and DDF_G , respectively). Precipitation in the snow covered areas is divided into rainfall and snowfall according to two threshold temperature values (0 and 2.5°C are adopted in this study). Between the two thresholds, mixed snow and rain is assumed to occur. Snow water equivalent in each subcatchment is updated daily with snowfall and snowmelt, while the glacier area

Estimating degree day factors from MODIS for snowmelt runoff modeling

Z. H. He et al.

Title Page

Abstract

Introduction

Conclusions

References

Tables

Figures

⏪

⏩

◀

▶

Back

Close

Full Screen / Esc

Printer-friendly Version

Interactive Discussion



Estimating degree day factors from MODIS for snowmelt runoff modeling

Z. H. He et al.

Title Page

Abstract

Introduction

Conclusions

References

Tables

Figures

⏪

⏩

◀

▶

Back

Close

Full Screen / Esc

Printer-friendly Version

Interactive Discussion



is assumed to be stable during the study period. The model parameters are grouped according to the runoff generation mechanisms, i.e., a groundwater group (KKA and KKD), a snowmelt group (DDF_S), a glacier melt group (DDF_G) and a group where rainfall directly becomes runoff (WM and B) (see He et al., 2014). Each parameter group is calibrated separately in a stepwise way by manual calibration. The stepwise calibration is similar to that proposed by He et al. (2014). In a first step, the hydrograph is partitioned according to three indices, S_i , G_i , D_i , which are defined as 0 or 1 (Eqs. 2–4) according to the water source for runoff generation on each day (groundwater baseflow, snowmelt, glacier melt and rainfall). Next, each parameter group is related to an individual hydrograph partition and calibrated on the corresponding partition separately.

$$S_i = \begin{cases} 1, & \text{if } \max_{j=1 \rightarrow 95} (T_j) \geq T_m \\ 0, & \text{otherwise} \end{cases} \quad \text{Snowmelt} \quad (2)$$

$$G_i = \begin{cases} 1, & \text{if } \max_{j=1 \rightarrow n} (T'_j) \geq T_m \\ 0, & \text{otherwise} \end{cases} \quad \text{Glacier melt} \quad (3)$$

$$D_i = \begin{cases} 1, & \text{if } \max_{j=1 \rightarrow 95} (T_j) \geq T_S \wedge \sum_{j=1 \rightarrow 95} P_j \geq 0 \\ 0, & \text{otherwise} \end{cases} \quad \text{Rainfall runoff} \quad (4)$$

where, S_i , G_i and D_i are the indices indicating the occurrence of snowmelt, glacier melt and rainfall runoff, respectively. Values equal to 1 indicate that snowmelt, glacier melt and rainfall runoff, respectively, can be a water source for runoff generation on that day. Values equal to 0 indicate that this is not the case. T_j is the daily temperature in the subcatchment j , T'_j is the daily temperature in the glacier covered part of subcatchment j , n is the number of subcatchment that covered with glacier, and P_j is the daily precipitation in subcatchment j . Based on the daily values of the three indices, the daily

hydrograph is segmented into four partitions in Eq. (5):

$$Q = \begin{cases} Q_{SB}, & \text{for } S_i + G_i + D_i = 0 \\ Q_{SB} + Q_{SM}, & \text{for } S_i - G_i - D_i = 1 \\ Q_{SB} + Q_{SM} + Q_{GM}, & \text{for } G_i - D_i = 1 \\ Q_{SB} + Q_{SM} + Q_{GM} + Q_R, & \text{for } D_i = 1 \end{cases} \quad (5)$$

where, Q_{SB} stands for the groundwater baseflow. It dominates the basin hydrograph when both melt water and rainfall runoff do not occur ($S_i + G_i + D_i = 0$). Q_{SM} represents snowmelt, Q_{GM} represents glacier melt water and Q_R represents the direct rainfall runoff. The partition is based on the assumption that the convergence time of drainage in the basin is no longer than one day.

The parameter groups are calibrated on different partitions in a stepwise way: the parameter group controlling groundwater is first calibrated on the Q_{SB} partition. Then, the degree-day factors for snowmelt and glacier melt are calibrated on the $Q_{SB} + Q_{SM}$ and $Q_{SB} + Q_{SM} + Q_{GM}$ partitions separately. Parameters for rainfall runoff are calibrated on the $Q_{SB} + Q_{SM} + Q_{GM} + Q_R$ partition in a last step. We use logRMSE as the goodness of fit measure for the calibration of groundwater baseflow and RMSE for the calibration of degree-day factors and rainfall runoff parameters. Finally, we combine the simulations of each partition to obtain the entire daily simulation of basin discharge and evaluate it using NSE, logNSE, VE and a combined performance measure ME (Eqs. 6–9).

2.3 Validation of estimated DDF_S from snow data

The estimated values of DDF_S are validated in the study period by applying their value in the THREW hydrological model and comparing the new simulations of runoff and snow cover patterns with those obtained by DDF_S calibrated on runoff. The validation is carried out in three basins with different catchment area, elevation and glacier melt contributions to the total runoff. The ME values of daily discharge simulation and RMSE values of the simulation of the snowmelt dominated hydrograph partition ($Q_{SB} + Q_{SM}$)

in the three basins are used to evaluate the performance of the runoff simulation. The fit between simulated and observed SCA series and spatial snow cover patterns by MODIS is used to assess the simulations of snow cover.

$$\text{NSE} = 1 - \frac{\sum_{i=1}^n (Q_{\text{obs}}(i) - Q_{\text{sim}}(i))^2}{\sum_{i=1}^n (Q_{\text{obs}}(i) - \bar{Q}_{\text{obs}}(i))^2} \quad (6)$$

$$\log \text{NSE} = 1 - \frac{\sum_{i=1}^n (\log Q_{\text{obs}}(i) - \log Q_{\text{sim}}(i))^2}{\sum_{i=1}^n (\log Q_{\text{obs}}(i) - \log \bar{Q}_{\text{obs}}(i))^2} \quad (7)$$

$$\text{VE} = 1 - \frac{\sum_{i=1}^n |Q_{\text{obs}}(i) - Q_{\text{sim}}(i)|}{\sum_{i=1}^n Q_{\text{obs}}(i)} \quad (8)$$

$$\text{ME} = \text{NSE} + \log \text{NSE} + \text{VE} \quad (9)$$

$$\text{RMSE} = \sqrt{\frac{1}{n} \sum_{i=1}^n (Q_{\text{obs}}(i) - Q_{\text{sim}}(i))^2} \quad (10)$$

3 Data

3.1 Study area

The methodology is evaluated in the Lienz catchment which is located in East Tyrol, Austria, and covers an area of 1198 km². Its elevations range from 670 m a.s.l. to 3775 m a.s.l., and approximately 7% of the region is covered by glacier (Fig. 1). Its annual mean temperature is approximately 1.7°C, and annual mean precipitation is about 1164 mm. Snowmelt water is an important water source for local runoff generation, especially in the spring season when approximately 70% of the basin is covered by snow (Blöschl et al., 1990). The topographic feature of the basin is depicted by

a 25 m resolution Digital Elevation Model which is used to divide the study basins into subcatchment units. The three basins (Lienz, Waier and Innerschloess, see Fig. 1) in the study area are further divided into 95 subcatchments, 29 subcatchments and 9 subcatchments respectively for the hydrological modeling. The runoff concentration time can be considered as approximately one day in this catchment (Blöschl et al., 1990).

3.2 Snow data

The daily MODIS snow covered area (SCA) data used here have a spatial resolution of 500 m and are the merged product of Parajka and Blöschl (2008b), where the original Terra and Aqua products were merged in space and time to reduce cloud coverage. Only the MODIS SCA data for those days when the cloud coverage of the basin was less than 50 % after the merging procedure are used. To obtain a continuous time series of SCA, we implemented a linear interpolation between two valid SCA values.

Snow depth data observed at 1091 stations in Austria (7 stations in the study area) are spatially interpolated by external drift kriging based on elevation. The resulting data product has a spatial resolution of 1 km. Snow depth in each subcatchment is the average value of all the 1 km × 1 km pixels inside.

3.3 Hydrologic model inputs

The daily precipitation data are spatially interpolated by external drift kriging from 1091 stations in Austria (7 stations in the study area). The temperature data are interpolated by the least-squares trend prediction method from 221 stations in Austria (6 stations in the study area). Both methods using elevation as an auxiliary variable (see Parajka et al., 2005). Daily streamflow data from three hydrological stations are used, Lienz, Waier and Innerschloess, which drain areas of 1198, 285 and 39 km² respectively (see Fig. 1). The datasets used in this study consist of two periods, the first is

HESSD

11, 8697–8735, 2014

Estimating degree day factors from MODIS for snowmelt runoff modeling

Z. H. He et al.

Title Page

Abstract

Introduction

Conclusions

References

Tables

Figures

⏪

⏩

◀

▶

Back

Close

Full Screen / Esc

Printer-friendly Version

Interactive Discussion



reduce the share of sensible heat (Musselman et al., 2012). Coupling with a stronger solar radiation due to lower cloudiness, stronger snowmelt is produced at higher elevations relative to the degree-day temperature. Higher elevations are also associated with steep terrain which reinforces the melt rate by increasing the solar incident angle on the south facing slopes (Blöschl et al., 1991a, b; Blöschl and Kirnbauer, 1992). At lower elevations, climate conditions are favorable for the growth of vegetation, which produce a higher share of latent heat by transpiration and restrain the snowmelt. On the other hand, higher vegetation canopies may contribute to higher soil water contents which may increase the albedo of the land surface and may reduce the energy available for snowmelt (Kuusisto, 1980). The moist soil can also enhance the temperature gradient and create sharp gradients in sensible heat fluxes (Entekhabi et al., 1996) and allow fast redistribution of soil moisture at small scales (Western et al., 1998). Changes of the heat conditions in the near surface atmosphere in turn may change the soil moisture state and may promote vegetation growth. The spatial variability of snow density and DDF_S is likely the combined result of a number of factors, including slope aspect, wind speed and shading, in addition to elevation and vegetation.

4.2 Stepwise calibration

Model parameters in the three basins are calibrated on the corresponding hydrograph partitions separately (see He et al., 2014). After the calibration, we combined the simulations of the four partitions and obtained the entire simulation of daily discharge in the study period. As an example, the simulation in each step in the largest basin, the Lienz basin, is shown in Fig. 4, using the calibrated degree-day factors for snowmelt and glacier melt as 2.6 and $3.5 \text{ mm d}^{-1} \text{ } ^\circ\text{C}^{-1}$ respectively, as shown in Table 1. The logRMSE and RMSE values in Fig. 4 suggest that the simulations of each hydrograph partition are very reasonable. The calibrated parameter set was also tested for the validation period (2006–2010), as shown in Fig. 5. Again, the performance is very reasonable as indicated by NSE, logNSE, VE and ME. For example, in the Lienz basin NSE values are 0.817 and 0.833 in the calibration and validation periods, respectively,

HESSD

11, 8697–8735, 2014

Estimating degree day factors from MODIS for snowmelt runoff modeling

Z. H. He et al.

Title Page

Abstract

Introduction

Conclusions

References

Tables

Figures



Back

Close

Full Screen / Esc

Printer-friendly Version

Interactive Discussion



HESSD

11, 8697–8735, 2014

Estimating degree day factors from MODIS for snowmelt runoff modeling

Z. H. He et al.

[Title Page](#)[Abstract](#)[Introduction](#)[Conclusions](#)[References](#)[Tables](#)[Figures](#)[⏪](#)[⏩](#)[◀](#)[▶](#)[Back](#)[Close](#)[Full Screen / Esc](#)[Printer-friendly Version](#)[Interactive Discussion](#)

are very similar to the NSE values shown in Fig. 5. The mean value of the estimated DDF_S in these two basins are 2.7 and 2.6 $\text{mm d}^{-1} \text{ } ^\circ\text{C}^{-1}$ respectively, both are similar to the calibrated value of 2.6 $\text{mm d}^{-1} \text{ } ^\circ\text{C}^{-1}$. It is worth noting that the new simulation in the smallest Innergschloess basin is significantly better, especially in the validation period, considering the ME values in Table 1. The mean value of the estimated DDF_S in this basin is 3.2 $\text{mm d}^{-1} \text{ } ^\circ\text{C}^{-1}$ which is clearly different from the calibrated value. This suggests that the calibrated DDF_S value of 1.0 $\text{mm d}^{-1} \text{ } ^\circ\text{C}^{-1}$ in this small, high elevation basin may not be accurate.

As the DDF_S value has the most sensitive effect on the snowmelt dominated hydrograph partition ($Q_{SB} + Q_{SM}$), we focus on the simulation of this partition by the two DDF_S sets in Fig. 7. The simulation performance is evaluated using RMSE. The first two rows in Fig. 7 show the simulations using calibrated (Fig. 7a–c) and estimated (Fig. 7d–f) DDF_S in the calibration period, and the last two rows present the simulations in the validation period (Fig. 7g–i is for DDF_S calibrated on runoff and Fig. 7j–l is for DDF_S estimated from snow data). The differences of the RMSE values obtained by the two DDF_S sets in the Lienz basin (first column) range from 0.132 to 0.347 $\text{m}^3 \text{ s}^{-1}$. Considering the relatively higher levels of the discharge, the two simulations can still be regarded as very close. As to the Waier basin (second column), the RMSE value obtained by the estimated DDF_S in the calibration period is slightly higher (0.04 $\text{m}^3 \text{ s}^{-1}$ higher) but much lower (0.263 $\text{m}^3 \text{ s}^{-1}$ lower) in the validation period. In Innergschloess basin (third column), the RMSE values in the calibration period are as close as a slight difference of 0.016 $\text{m}^3 \text{ s}^{-1}$, while in the validation period the RMSE value obtained by the estimated DDF_S is 0.118 $\text{m}^3 \text{ s}^{-1}$ lower than that obtained by the calibrated DDF_S . Comparisons of the simulations of the $Q_{SB} + Q_{SM}$ hydrograph partition show a similar performance in the calibration period but a better performance of estimated DDF_S in the validation period. Overall, the comparisons for the three basins shown in Table 1 and Fig. 7 suggest that the DDF_S values estimated from snow data by the new method tend to produce a somewhat better runoff simulation performance.

Estimating degree day factors from MODIS for snowmelt runoff modeling

Z. H. He et al.

[Title Page](#)[Abstract](#)[Introduction](#)[Conclusions](#)[References](#)[Tables](#)[Figures](#)[Back](#)[Close](#)[Full Screen / Esc](#)[Printer-friendly Version](#)[Interactive Discussion](#)

We also assess the suitability of the estimated DDF_S values by examining the snow cover simulations in the study basins. The match between simulated snow cover and observed snow cover from MODIS is illustrated in Figs. 8–11. The THREW model simulates snow water equivalent (SWE) in each subcatchment. To obtain the snow covered area (SCA) in the basin, we define a threshold value for the simulated SWE (SWE_T), above which the sub unit of the basin (i.e. subcatchment) is considered to be fully covered by snow, and below it the subcatchment is considered snow free. Subsequently, we obtain the simulated time series of SCA of the study basin. For example, Fig. 8 shows the comparison of simulated SCA using DDF_S calibrated on runoff and DDF_S estimated from snow data, and the observed SCA from MODIS in both calibration and validation periods in the Lienz basin. Figure 9 shows a similar figure for Innergschloess. The black dots in Figs. 8 and 9 are the MODIS observed SCA values on days when the observed cloud coverage in the basin was lower than 20%. The similarity of the simulated SCA and observed SCA (just for the days when MODIS was available) is evaluated using RMSE, where $RMSE_c$ relates to the simulations using calibrated DDF_S and $RMSE_e$ relates to the simulations using estimated DDF_S . We determine the SWE_T threshold by optimizing the $RMSE_c$ values in the calibration period in the Lienz basin which resulted in a value of 18 mm. Parajka and Blöschl (2008a) give details on how the threshold can be chosen.

Generally, the simulated snow covered areas by the two DDF_S sets are similar and both are close to those observed by MODIS in the Lienz basin. The similarity can be attributed to the similar value of estimated and calibrated DDF_S in this basin. It is interesting that the simulation of SCA by estimated DDF_S (green lines) still has a higher performance as indicated by the lower $RMSE_e$ values in both calibration and validation periods. As to the simulation in Innergschloess shown in Fig. 9, the simulated SCA using estimated DDF_S (green lines) matches the MODIS observed SCA significantly better than that simulated by calibrated DDF_S (red lines) in both calibration and validation periods. The $RMSE_e$ values are approximately 0.07 lower than the $RMSE_c$ values

(Fig. 9). This result suggests that the DDF_S values estimated from snow data in this basin represent the snowmelt pattern better than the value calibrated on runoff.

Several days with available MODIS data (black dots in Fig. 8) were selected to analyze the snow patterns in Figs. 10 and 11. The selected days include 29 April, 7 May and 10 June in 2003, and 27 April, 7 May and 27 May in 2008. The snow patterns are expressed as the spatial distribution of simulated SWE using calibrated DDF_S and estimated DDF_S , and the spatial distribution of SCA observed by MODIS. Figures 10 and 11 show the results for the calibration period and validation period, respectively. Generally, a higher simulated SWE value corresponds to a higher MODIS SCA value in that subcatchment. Snow covered areas in different parts of the catchment are very similar. All the three snow patterns show a clear snow ablation process from late April to late May. In April, most of the basin area is covered by snow, and the snow water equivalent can be as high as 600–700 mm, while snow cover almost disappears in late May 2003. May is a snowmelt flood month which is also indicated in Fig. 5 by the abrupt increase of discharge in this month. However, there are some differences between the three snow patterns. In the upstream subcatchments the simulated snow water equivalent using calibrated DDF_S is higher than that using estimated DDF_S . Correspondingly, the simulated snow covered areas using calibrated DDF_S are higher than those observed from MODIS (see Figs. 10 and 11 on 10 June 2003 and 27 May 2008). In the downstream subcatchments, simulated snow covered area by the two DDF_S sets are both lower than the observed ones (see Figs. 10 and 11 on 29 April 2003 and 7 May 2008). Overall, the similarity between simulated snow covered area using estimated DDF_S and MODIS observed snow covered area is high, which can be seen for 7 May, 10 June in 2003, and 27 April and 27 May in 2008. MODIS data were one of the inputs to estimating DDF_S , so this result shows the consistency and usefulness of the estimates.

Estimating degree day factors from MODIS for snowmelt runoff modeling

Z. H. He et al.

Title Page

Abstract

Introduction

Conclusions

References

Tables

Figures



Back

Close

Full Screen / Esc

Printer-friendly Version

Interactive Discussion



5 Discussion and conclusions

This study proposes a method for estimating snowmelt degree-day factor (DDF_S) based on MODIS snow cover data and snow depth data. DDF_S is estimated in each subcatchment of the study basin separately. The spatial distribution of DDF_S shows a strong correlation with elevation. Subcatchments with high elevations are associated with higher DDF_S values, which can be partly attributed to the interactions of climate conditions, topography and vegetation. The comparisons between simulations using DDF_S estimated from snow data and DDF_S calibrated on runoff in terms of discharge and snow cover patterns show that the estimated DDF_S are indeed more plausible than the calibrated DDF_S . The better performance can be attributed to two advantages of the estimation method: first, using spatially variable snow cover data from MODIS and snow depth data, it is possible to estimate DDF_S in a spatially distributed fashion, while the calibrated DDF_S are lumped values and therefore spatially uniform. Second, the values of DDF_S are estimated directly from observed snow cover data, accounting for snow density, without involving runoff processes. The direct estimation should have a stronger physical basis than the calibration in which the value of DDF_S is influenced by a number of hydrological processes and the interactions of hydrological model parameters (Merz et al., 2011).

The estimated values of snow density and DDF_S are fully consistent with those estimated by Kuusisto (1980), Rango and Martinec (1995), Parajka et al. (2005) and Sturm et al. (2010). The values of snow density estimated in Sturm et al. (2010) in Canada and the United States fell into a range of 0.19 to 0.51 g cm⁻³, and the DDF_S of snowmelt estimated in Parajka et al. (2005) in Austria ranged from approximately 0.5 to 5.0 mm d⁻¹ °C⁻¹. The simulations of snow cover patterns show an obvious snow ablation process from late April to late May in the study basin, which was also indicated by Blöschl et al. (1990). The performance of the runoff simulations in this study is also very reasonable (NSE almost always > 0.8). For example, the runoff simulations of Parajka et al. (2007) in 320 catchments in Austria based on automatic calibration gave

HESSD

11, 8697–8735, 2014

Estimating degree day factors from MODIS for snowmelt runoff modeling

Z. H. He et al.

Title Page

Abstract

Introduction

Conclusions

References

Tables

Figures

⏪

⏩

◀

▶

Back

Close

Full Screen / Esc

Printer-friendly Version

Interactive Discussion



Estimating degree day factors from MODIS for snowmelt runoff modeling

Z. H. He et al.

[Title Page](#)

[Abstract](#)

[Introduction](#)

[Conclusions](#)

[References](#)

[Tables](#)

[Figures](#)

[⏪](#)

[⏩](#)

[◀](#)

[▶](#)

[Back](#)

[Close](#)

[Full Screen / Esc](#)

[Printer-friendly Version](#)

[Interactive Discussion](#)



NSE mean values of about 0.75 in calibration period and 0.70 in validation period. This underlines the usefulness of the manual stepwise calibration method. It is believed that the actual model performance is similar to that of automatic methods, yet the parameter estimates may be more plausible as different parameter groups are estimated separately, which reduces the problem of parameter interdependence in the calibration process.

It should be noted that the estimated values of snow density and DDF_S are associated with a number of uncertainty sources: the temperature threshold values that determine the occurrence of snowmelt (T_m) and the transition between liquid and solid precipitation (i.e. T_S and T_R) and also the spatial interpolation method of the snow depth data. Usually, the value of T_m falls in between the values of T_S and T_R in mountain basins. As long as the temperature is higher than T_R , the change of snow water equivalent (SWE) can be attributed to snowmelt alone. When the temperature is lower than T_S , basin snow water equivalent will be affected by snowfall alone. The proposed estimation method can be used in mountain basins with variable values of T_m , T_S and T_R in different basins. Reliable snow depth data are important for estimating snow density and DDF_S well. To obtain the spatial distribution of snow depth, measured data in 7 stations in the study area were interpolated here. The interpolation method can play a significant role. Importantly, in this paper we made the assumption that snow density during days of accumulation is similar to the density during days of ablation. This is an assumption that needs further analysis on the basis of detailed snow data. Also the analysis of the sensitivity of the results to other uncertainty sources could be the topic of future work.

Acknowledgements. This study was supported by the National Science Foundation of China (NSFC 51190092, U1202232, 51222901) and the foundation of the State Key Laboratory of Hydrosience and Engineering of Tsinghua University (2014-KY-01). We would like to thank the International Communication Fellowship of Tsinghua University for financial support. We also thank Thomas Nester and Jürgen Komma for their helpful suggestions on the hydrological modeling in Austria, and Magdalena Rogger for providing the hydrogeology data in the study area.

References

- Andreadis, K. M. and Lettenmaier, D. P.: Assimilating remotely sensed snow observations into a macroscale hydrology model, *Adv. Water Resour.*, 29, 872–886, 2006.
- Bach, H., Braun, M., Lampart, G., and Mauser, W.: Use of remote sensing for hydrological parameterisation of Alpine catchments, *Hydrol. Earth Syst. Sci.*, 7, 862–876, doi:10.5194/hess-7-862-2003, 2003.
- Blöschl, G. and Kirnbauer, R.: An analysis of snow cover patterns in a small Alpine catchment, *Hydrol. Process.*, 6, 99–109, 1992.
- Blöschl, G., Kirnbauer, R., and Gutknecht, D.: Modelling snowmelt in a mountainous river basin on an event basis, *J. Hydrol.*, 113, 207–229, 1990.
- Blöschl, G., Kirnbauer, R., and Gutknecht, D.: Distributed snowmelt simulations in an Alpine catchment. 1. Model evaluation on the basis of snow cover patterns, *Water Resour. Res.*, 27, 3171–3179, 1991a.
- Blöschl, G., Gutknecht, D., and Kirnbauer, R.: Distributed snowmelt simulations in an Alpine catchment. 2. Parameter study and model predictions, *Water Resour. Res.*, 27, 3181–3188, 1991b.
- Bormann, K. J., Westra, S., Evans, J. P., and McCabe, M. F.: Spatial and temporal variability in seasonal snow density, *J. Hydrol.*, 484, 63–73, 2013.
- Bormann, K. J., Evans, J. P., and McCabe, M. F.: Constraining snowmelt in a temperature-index model using simulated snow, *J. Hydrol.*, 517, 652–667, 2014.
- Cazorzi, F. and DallaFontana, G.: Snowmelt modelling by combining air temperature and a distributed radiation index, *J. Hydrol.*, 181, 169–187, 1996.
- Daly, S. F., Davis, R., Ochs, E., and Pangburn, T.: An approach to spatially distributed snow modelling of the Sacramento and San Joaquin basins, California, *Hydrol. Process.*, 14, 3257–3271, 2000.
- Dery, S. J., Salomonson, V. V., Stieglitz, M., Hall, D. K., and Appel, I.: An approach to using snow areal depletion curves inferred from MODIS and its application to land surface modelling in Alaska, *Hydrol. Process.*, 19, 2755–2774, 2005.
- Dunn, S. M. and Colohan, R.: Developing the snow component of a distributed hydrological model: a step-wise approach based on multi-objective analysis, *J. Hydrol.*, 223, 1–16, 1999.
- Entekhabi, D., Rodriguez-Iturbe, I., and Castelli, F.: Mutual interaction of soil moisture state and atmospheric processes, *J. Hydrol.*, 184, 3–17, 1996.

Estimating degree day factors from MODIS for snowmelt runoff modeling

Z. H. He et al.

Title Page

Abstract

Introduction

Conclusions

References

Tables

Figures



Back

Close

Full Screen / Esc

Printer-friendly Version

Interactive Discussion



Estimating degree day factors from MODIS for snowmelt runoff modeling

Z. H. He et al.

[Title Page](#)[Abstract](#)[Introduction](#)[Conclusions](#)[References](#)[Tables](#)[Figures](#)[⏪](#)[⏩](#)[◀](#)[▶](#)[Back](#)[Close](#)[Full Screen / Esc](#)[Printer-friendly Version](#)[Interactive Discussion](#)

- Fierz, C., Riber, P., Adams, E. E., Curran, A. R., Fohn, P., Lehning, M., and Pluss, C.: Evaluation of snow-surface energy balance models in alpine terrain, *J. Hydrol.*, 282, 76–94, 2003.
- Georgievsky, M. V.: Application of the snowmelt runoff model in the Kuban river basin using MODIS satellite images, *Environ. Res. Lett.*, 4, 045017, doi:10.1088/1748-9326/4/4/045017, 2009.
- 5 Hall, D. K. and Riggs, G. A.: Accuracy assessment of the MODIS snow products, *Hydrol. Process.*, 21, 1534–1547, 2007.
- Hall, D. K., Tait, A. B., Foster, J. L., Chang, A., and Allen, M.: Intercomparison of satellite-derived snow-cover maps, *Ann. Glaciol.*, 31, 369–376, 2000.
- 10 Hall, D. K., Riggs, G. A., Salomonson, V. V., DiGirolamo, N. E., and Bayr, K. J.: MODIS snow-cover products, *Remote Sens. Environ.*, 83, 181–194, 2002.
- Hamlet, F., Mote, W., Clark, P., and Lettenmaier, P.: Effects of temperature and precipitation variability on snowpack trends in the Western United States, *J. Climate*, 18, 4545–4561, 2005.
- 15 He, Z., Tian, F., Hu, H. C., Gupta, H. V., and Hu, H. P.: Diagnostic calibration of a hydrological model in an alpine area, *Hydrol. Earth Syst. Sci. Discuss.*, 11, 1253–1300, doi:10.5194/hessd-11-1253-2014, 2014.
- Hinzman, L. D. and Kane, D. L.: Snow hydrology of a headwater arctic basin – 2. Conceptual analysis and computer modeling, *Water Resour. Res.*, 27, 1111–1121, 1991.
- 20 Hock, R.: A distributed temperature-index ice- and snowmelt model including potential direct solar radiation, *J. Glaciol.*, 45, 101–111, 1999.
- Hock, R.: Temperature index melt modelling in mountain areas, *J. Hydrol.*, 282, 104–115, 2003.
- Howard, C.: Revisiting the degree-day method for snowmelt computations – discussion, *Water Resour. Bull.*, 32, 411–413, 1996.
- 25 Immerzeel, W. W., Droogers, P., de Jong, S. M., and Bierkens, M. F. P.: Large-scale monitoring of snow cover and runoff simulation in Himalayan river basins using remote sensing, *Remote Sens. Environ.*, 113, 40–49, 2009.
- Jeelani, G., Feddema, J. J., van der Veen, C. J., and Stearns, L.: Role of snow and glacier melt in controlling river hydrology in Liddar watershed (western Himalaya) under current and future climate, *Water Resour. Res.*, 48, W12508, doi:10.1029/2011WR011590, 2012.
- 30 Johnson, J. B. and Schaefer, G. L.: The influence of thermal, hydrologic, and snow deformation mechanisms on snow water equivalent pressure sensor accuracy, *Hydrol. Process.*, 16, 3529–3542, 2002.

Estimating degree day factors from MODIS for snowmelt runoff modeling

Z. H. He et al.

[Title Page](#)[Abstract](#)[Introduction](#)[Conclusions](#)[References](#)[Tables](#)[Figures](#)[Back](#)[Close](#)[Full Screen / Esc](#)[Printer-friendly Version](#)[Interactive Discussion](#)

- Kane, D. L., Gieck, R. E., and Hinzman, L. D.: Snowmelt modeling at small Alaskan arctic watershed, *J. Hydrol. Eng.*, 2, 204–210, 1997.
- Kirchner, J. W.: Getting the right answers for the right reasons: linking measurements, analyses, and models to advance the science of hydrology, *Water Resour. Res.*, 42, W03S04, doi:10.1029/2005WR004362, 2006.
- 5 Klein, A. G. and Barnett, A. C.: Validation of daily MODIS snow cover maps of the Upper Rio Grande River Basin for the 2000–2001 snow year, *Remote Sens. Environ.*, 86, 162–176, 2003.
- Klok, E. J., Jasper, K., Roelofsma, K. P., Gurtz, J., and Badoux, A.: Distributed hydrological modelling of a heavily glaciated Alpine river basin, *Hydrolog. Sci. J.*, 46, 553–570, 2001.
- 10 Kuusisto, E.: On the values and variability of degree-day melting factor in Finland, *Nord. Hydrol.*, 11, 235–242, 1980.
- Lang, H. and Braun, L.: On the information content of air temperature in the context of snow melt estimation, in: *Hydrology of Mountainous Areas*, edited by: Molnar, L., Proceedings of the Strbske Pleso Symposium 1990, held at Strbské Pleso, Vysoké Tatry, Czechoslovakia, 7–10 June 1988, IAHS Publ. no. 190, 347–354, 1990.
- 15 Langston, G., Bentley, L. R., Hayashi, M., McClymont, A., and Pidlisecky, A.: Internal structure and hydrological functions of an alpine proglacial moraine, *Hydrol. Process.*, 25, 2967–2982, 2011.
- 20 Lee, S. W., Klein, A. G., and Over, T. M.: A comparison of MODIS and NOHRSC snow-cover products for simulating streamflow using the snowmelt runoff model, *Hydrol. Process.*, 19, 2951–2972, 2005.
- Li, H. Y., Sivapalan, M., and Tian, F. Q.: Comparative diagnostic analysis of runoff generation processes in Oklahoma DMIP2 basins: the Blue River and the Illinois River, *J. Hydrol.*, 418, 90–109, 2012.
- 25 Li, X. G. and Williams, M. W.: Snowmelt runoff modelling in an arid mountain watershed, Tarim Basin, China, *Hydrol. Process.*, 22, 3931–3940, 2008.
- Liu, T., Willems, P., Feng, X. W., Li, Q., Huang, Y., Bao, A. M., Chen, X., Veroustraete, F., and Dong, Q. H.: On the usefulness of remote sensing input data for spatially distributed hydrological modelling: case of the Tarim River basin in China, *Hydrol. Process.*, 26, 335–344, 2012.
- 30

Estimating degree day factors from MODIS for snowmelt runoff modeling

Z. H. He et al.

Title Page

Abstract

Introduction

Conclusions

References

Tables

Figures



Back

Close

Full Screen / Esc

Printer-friendly Version

Interactive Discussion



- Luo, Y., Arnold, J., Liu, S. Y., Wang, X. Y., and Chen, X.: Inclusion of glacier processes for distributed hydrological modeling at basin scale with application to a watershed in Tianshan Mountains, northwest China, *J. Hydrol.*, 477, 72–85, 2013.
- Martinez, J.: The degree-day factor for snowmelt-runoff forecasting, *IAHS-AISH P.*, 51, 468–477, 1960.
- Maurer, E. P., Rhoads, J. D., Dubayah, R. O., and Lettenmaier, D. P.: Evaluation of the snow-covered area data product from MODIS, *Hydrol. Process.*, 17, 59–71, 2003.
- Marsh, C. B., Pomeroy, J. W., and Spiteri, R. J.: Implications of mountain shading on calculating energy for snowmelt using unstructured triangular meshes, *Hydrol. Process.*, 26, 1767–1778, 2012.
- Merz, R., Parajka, J., and Blöschl, G.: Time stability of catchment model parameters: implications for climate impact analyses. *Water Resour. Res.*, 47, W02531, doi:10.1029/2010WR009505, 2011.
- Mou, L., Tian, F., Hu, H., and Sivapalan, M.: Extension of the Representative Elementary Watershed approach for cold regions: constitutive relationships and an application, *Hydrol. Earth Syst. Sci.*, 12, 565–585, doi:10.5194/hess-12-565-2008, 2008.
- Musselman, K. N., Molotch, N. P., Margulis, S. A., Kirchner, P. B., and Bales, R. C.: Influence of canopy structure and direct beam solar irradiance on snowmelt rates in a mixed conifer forest, *Agr. Forest Meteorol.*, 161, 46–56, 2012.
- Nester, T., Kirnbauer, R., Gutknecht, D., and Blöschl, G.: Climate and catchment controls on the performance of regional flood simulations, *J. Hydrol.*, 402, 340–356, 2011.
- Ohmura, A.: Physical basis for the temperature-based melt-index method, *J. Appl. Meteorol.*, 40, 753–761, 2001.
- Parajka, J. and Blöschl, G.: The value of MODIS snow cover data in validating and calibrating conceptual hydrologic models, *J. Hydrol.*, 358, 240–258, 2008a.
- Parajka, J. and Blöschl, G.: Spatio-temporal combination of MODIS images – potential for snow cover mapping, *Water Resour. Res.*, 44, W03406, doi:10.1029/2007WR006204, 2008b.
- Parajka, J. and Blöschl, G.: MODIS-based snow cover products, validation, and hydrologic applications, in: *Multi-scale Hydrological Remote Sensing: Perspectives and Applications*, chap. 9, edited by: Chang, N. B. and Hong, Y., CRC Press, Boca Raton, 185–212, 2012.
- Parajka, J., Merz, R., and Blöschl, G.: A comparison of regionalisation methods for catchment model parameters, *Hydrol. Earth Syst. Sci.*, 9, 157–171, doi:10.5194/hess-9-157-2005, 2005.

Estimating degree day factors from MODIS for snowmelt runoff modeling

Z. H. He et al.

Title Page

Abstract

Introduction

Conclusions

References

Tables

Figures

⏪

⏩

◀

▶

Back

Close

Full Screen / Esc

Printer-friendly Version

Interactive Discussion



- Parajka, J., Merz, R., and Blöschl, G.: Uncertainty and multiple objective calibration in regional water balance modelling: case study in 320 Austrian catchments, *Hydrol. Process.*, 21, 435–446, 2007.
- Rango, A. and Martinec, J.: Application of a snowmelt–runoff model using Landsat data, *Nord. Hydrol.*, 10, 225–238, 1979.
- Rango, A. and Martinec, J.: Revisiting the degree-day method for snowmelt computations, *Water Resour. Bull.*, 31, 657–669, 1995.
- Singh, P. and Kumar, N.: Determination of snowmelt factor in the Himalayan region, *Hydrolog. Sci. J.*, 41, 301–310, 1996.
- Singh, P., Kumar, N., and Arora, M.: Degree-day factors for snow and ice for Dokriani Glacier, Garhwal Himalayas, *J. Hydrol.*, 235, 1–11, 2000.
- Sturm, M., Taras, B., Liston, G. E., Derksen, C., Jonas, T., and Lea, J.: Estimating snow water equivalent using snow depth data and climate classes, *J. Hydrometeorol.*, 11, 1380–1394, 2010.
- Tekeli, A. E., Akyurek, Z., Sorman, A. A., Sensoy, A., and Sorman, A. U.: Using MODIS snow cover maps in modeling snowmelt runoff process in the eastern part of Turkey, *Remote Sens. Environ.*, 97, 216–230, 2005.
- Tian, F. Q., Hu, H., Lei, Z., and Sivapalan, M.: Extension of the Representative Elementary Watershed approach for cold regions via explicit treatment of energy related processes, *Hydrol. Earth Syst. Sci.*, 10, 619–644, doi:10.5194/hess-10-619-2006, 2006.
- Tian, F. Q., Hu, H. P., and Lei, Z. D.: Thermodynamic watershed hydrological model: constitutive relationship, *Sci. China Ser. E*, 51, 1353–1369, 2008.
- Tian, F. Q., Li, H. Y., and Sivapalan, M.: Model diagnostic analysis of seasonal switching of runoff generation mechanisms in the Blue River basin, Oklahoma, *J. Hydrol.*, 418, 136–149, 2012.
- Udnaes, H. C., Alfnes, E., and Andreassen, L. M.: Improving runoff modelling using satellite-derived snow covered area?, *Nord. Hydrol.*, 38, 21–32, 2007.
- Verbunt, M., Gurtz, J., Jasper, K., Lang, H., Warmerdam, P., and Zappa, M.: The hydrological role of snow and glaciers in alpine river basins and their distributed modeling, *J. Hydrol.*, 282, 36–55, 2003.
- Viviroli, D., Weingartner, R., and Messerli, B.: Assessing the hydrological significance of the world's mountains, *Mt. Res. Dev.*, 23, 32–40, 2003.

HESSD

11, 8697–8735, 2014

Estimating degree day factors from MODIS for snowmelt runoff modeling

Z. H. He et al.

Title Page

Abstract

Introduction

Conclusions

References

Tables

Figures

⏪

⏩

◀

▶

Back

Close

Full Screen / Esc

Printer-friendly Version

Interactive Discussion



- Wang, X. W., Xie, H. J., and Liang, T. G.: Evaluation of MODIS snow cover and cloud mask and its application in Northern Xinjiang, China, *Remote Sens. Environ.*, 112, 1497–1513, 2008.
- Western, A. W., Blöschl, G., and Grayson, R. B.: How well do indicator variograms capture the spatial connectivity of soil moisture?, *Hydrol. Process.*, 12, 1851–1868, 1998.
- 5 Williams, K. S. and Tarboton, D. G.: The ABC's of snowmelt: a topographically factorized energy component snowmelt model, *Hydrol. Process.*, 13, 1905–1920, 1999.
- Zhang, S. Q., Gao, X., Ye, B. S., Zhang, X. W., and Hagemann, S.: A modified monthly degree-day model for evaluating glacier runoff changes in China. Part II: Application, *Hydrol. Process.*, 26, 1697–1706, 2012.
- 10 Zhao, R. J.: The Xin'anjiang model applied in China, *J. Hydrol.*, 135, 371–381, 1992.
- Zhou, X. B., Xie, H. J., and Hendrickx, J.: Statistical evaluation of remotely sensed snow-cover products with constraints from streamflow and SNOTEL measurements, *Remote Sens. Environ.*, 94, 214–231, 2005.

Estimating degree day factors from MODIS for snowmelt runoff modeling

Z. H. He et al.

Table 1. Performance of discharge simulations in three basins. DDF_S is the snowmelt degree-day factor and DDF_G is the glacier melt degree-day factor. ME is the sum of NSE, logNSE and VE. The value of DDF_S estimated from snow data is expressed as the spatial mean value \pm the mean difference of the highest and the lowest value (in space) from the mean value. DDF_S values estimated by the proposed method are shown in bold.

		Lienz		Waier		Innergschloess	
		Calibration Period	Validation Period	Calibration Period	Validation Period	Calibration Period	Validation Period
DDF _S calibrated on runoff	DDF _S (mm d ⁻¹ °C ⁻¹)	2.6	2.6	2.6	2.6	1.0	1.0
	DDF _G (mm d ⁻¹ °C ⁻¹)	3.5	3.5	4.2	4.2	6.0	6.0
	NSE	0.817	0.833	0.832	0.863	0.804	0.726
	logNSE	0.851	0.873	0.849	0.871	0.825	0.871
	VE	0.762	0.382	0.669	0.700	-0.428	-0.182
	ME	2.429	2.088	2.350	2.434	1.201	1.415
DDF _S estimated from snow data	DDF _S (mm d ⁻¹ °C ⁻¹)	2.7 ± 1.1	2.7 ± 1.1	2.6 ± 0.9	2.6 ± 0.9	3.2 ± 0.3	3.2 ± 0.3
	DDF _G (mm d ⁻¹ °C ⁻¹)	3.5	3.5	4.2	4.2	6.0	6.0
	NSE	0.810	0.826	0.835	0.845	0.801	0.768
	logNSE	0.845	0.867	0.845	0.869	0.826	0.885
	VE	0.751	0.391	0.670	0.700	-0.470	-0.101
	ME	2.407	2.084	2.349	2.414	1.157	1.553

[Title Page](#)
[Abstract](#)
[Introduction](#)
[Conclusions](#)
[References](#)
[Tables](#)
[Figures](#)
[Back](#)
[Close](#)
[Full Screen / Esc](#)
[Printer-friendly Version](#)
[Interactive Discussion](#)

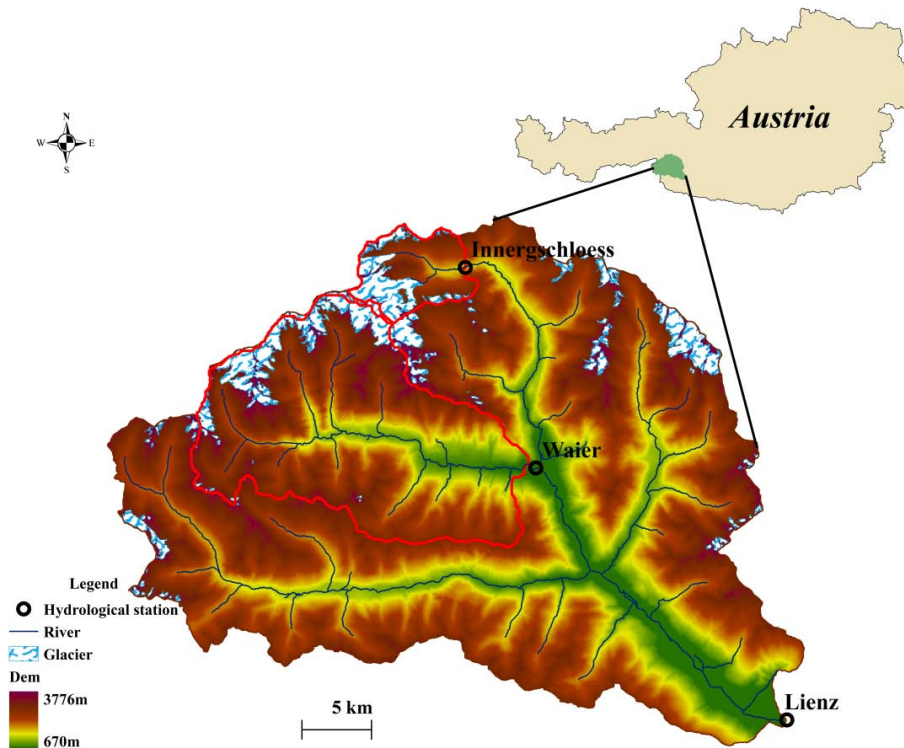



Figure 1. Location of the study area in Austria. Three catchments are analyzed, Lienz, Waier and Innerschloess, with areas of 1190 km², 285 km² and 39 km², respectively. The glacier coverage in the three basins is approximately 7 %, 13 % and 29 %.

Estimating degree day factors from MODIS for snowmelt runoff modeling

Z. H. He et al.

[Title Page](#)

[Abstract](#)

[Introduction](#)

[Conclusions](#)

[References](#)

[Tables](#)

[Figures](#)

[⏪](#)

[⏩](#)

[⏴](#)

[⏵](#)

[Back](#)

[Close](#)

[Full Screen / Esc](#)

[Printer-friendly Version](#)

[Interactive Discussion](#)



Estimating degree day factors from MODIS for snowmelt runoff modeling

Z. H. He et al.

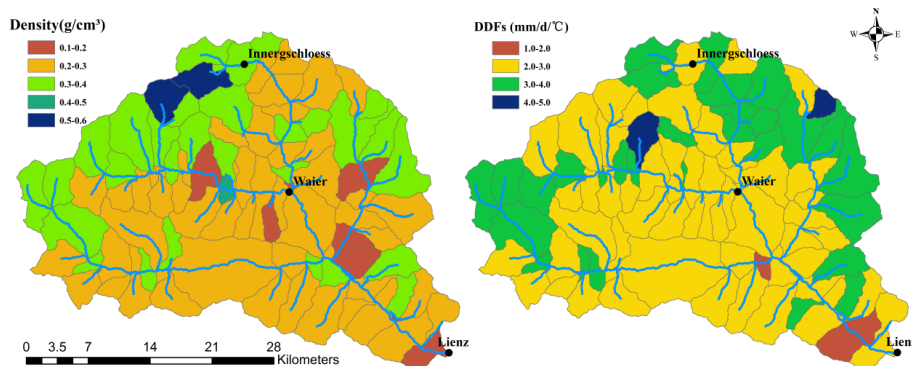


Figure 2. Spatial distribution of the snow density and the snowmelt degree-day factor (DDF_S) estimated by the proposed method in the Lienz basin. Black dots indicate the stream gauges.

[Title Page](#)[Abstract](#)[Introduction](#)[Conclusions](#)[References](#)[Tables](#)[Figures](#)[◀](#)[▶](#)[◀](#)[▶](#)[Back](#)[Close](#)[Full Screen / Esc](#)[Printer-friendly Version](#)[Interactive Discussion](#)

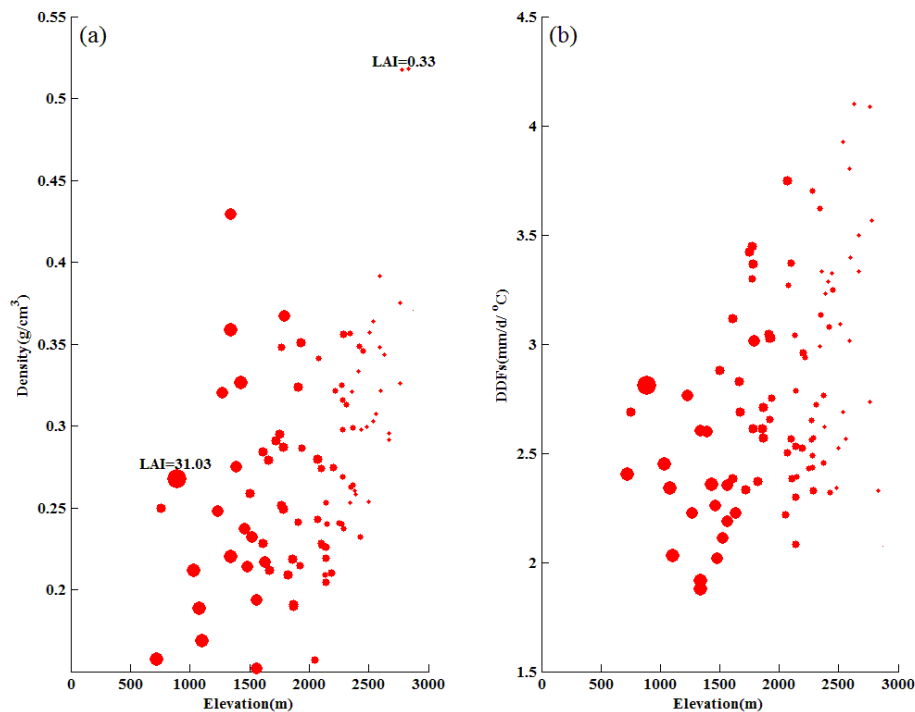


Figure 3. Snow density and snowmelt degree-day factor (DDF_s) estimated by the proposed method plotted against elevation in the Lienz basin. Each dot represents a sub-catchment in the basin. The size of dots increases with increasing of mean leaf area index (LAI) over the study period (2001–2010) which is derived from MODIS. LAI values in the basin range between 0.33 and 31.03.

Estimating degree day factors from MODIS for snowmelt runoff modeling

Z. H. He et al.

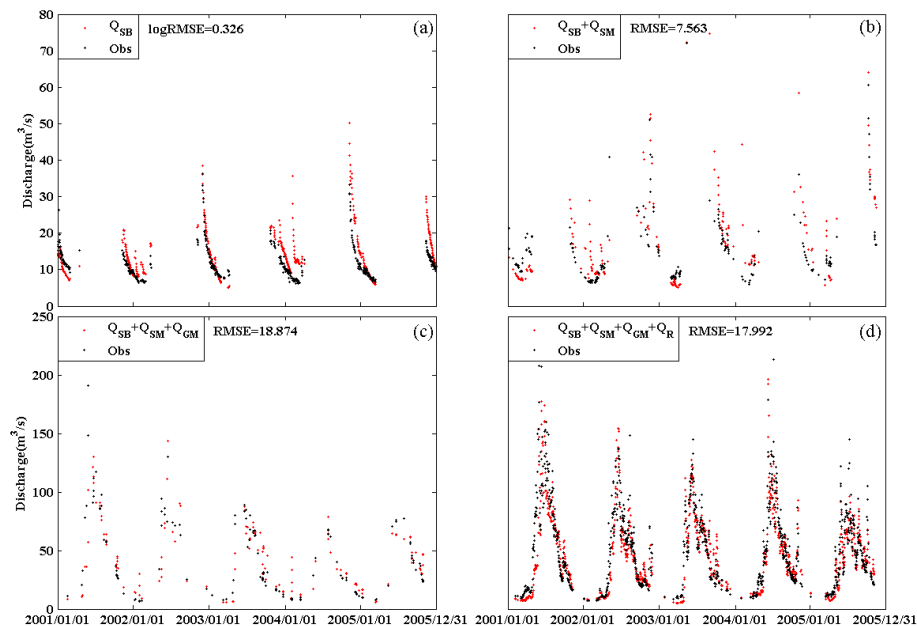


Figure 4. Stepwise calibration results for the Lienz basin in the calibration period. **(a)** is the first calibration step in which the parameters controlling groundwater baseflow are calibrated, **(b)** to **(d)** are the subsequent three steps of calibrating melt factors and rainfall runoff parameters. Q_{SB} , Q_{SM} , Q_{GM} and Q_R are the simulated discharges that are generated by baseflow, snowmelt, glacier melt and rainfall, respectively.

Title Page

Abstract

Introduction

Conclusions

References

Tables

Figures

◀

▶

◀

▶

Back

Close

Full Screen / Esc

Printer-friendly Version

Interactive Discussion



Estimating degree day factors from MODIS for snowmelt runoff modeling

Z. H. He et al.

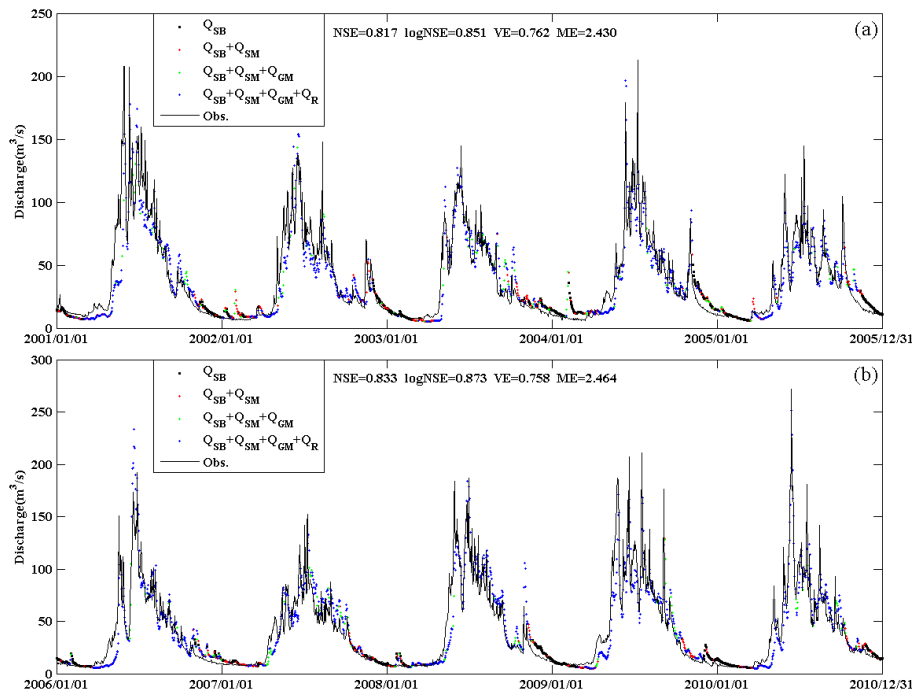


Figure 5. Simulation of daily discharge in the Lienz basin using the snowmelt degree-day factor calibrated on runoff. **(a)** is for the calibration period and **(b)** is for the validation period. The entire daily simulated discharge hydrograph has been combined from the simulations of different runoff segments. Q_{SB} stands for the simulated runoff generated by groundwater baseflow, Q_{SM} and Q_{GM} indicate simulated runoff generated by snow and glacier melt, and Q_R is the simulated runoff generated by rainfall directly. Performance measures of the simulations are shown at the top of each panel.

Estimating degree day factors from MODIS for snowmelt runoff modeling

Z. H. He et al.

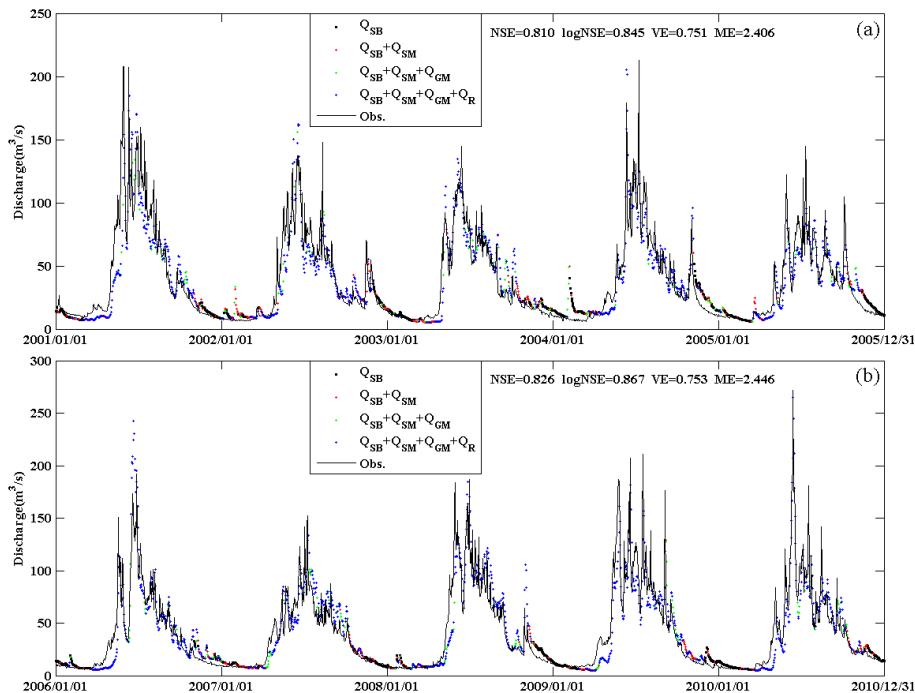


Figure 6. Same as Fig. 5 but using snowmelt degree-day factors estimated from snow data.

Title Page

Abstract

Introduction

Conclusions

References

Tables

Figures

◀

▶

◀

▶

Back

Close

Full Screen / Esc

Printer-friendly Version

Interactive Discussion



Estimating degree day factors from MODIS for snowmelt runoff modeling

Z. H. He et al.

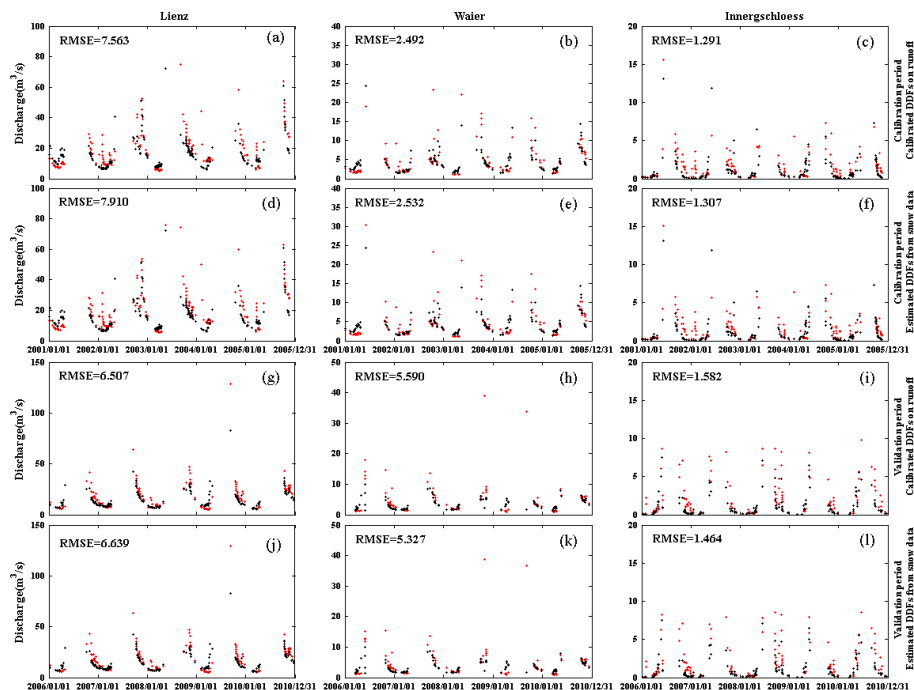


Figure 7. Simulations of discharge segments generated by groundwater baseflow (Q_{SB}) and snowmelt (Q_{SM}) in the three basins. **(a–c)** are simulations for the calibration period using DDF_S calibrated on runoff, **(d–f)** are simulation for the calibration period using DDF_S estimated from snow data, **(g–i)** are simulations for the validation period using DDF_S calibrated on runoff, **(j–l)** are simulations for the validation period using DDF_S estimated from snow data. The discharge simulations are evaluated using the RMSE ($m^3 s^{-1}$).

[Title Page](#)
[Abstract](#)
[Introduction](#)
[Conclusions](#)
[References](#)
[Tables](#)
[Figures](#)
[Back](#)
[Close](#)
[Full Screen / Esc](#)
[Printer-friendly Version](#)
[Interactive Discussion](#)

Estimating degree day factors from MODIS for snowmelt runoff modeling

Z. H. He et al.

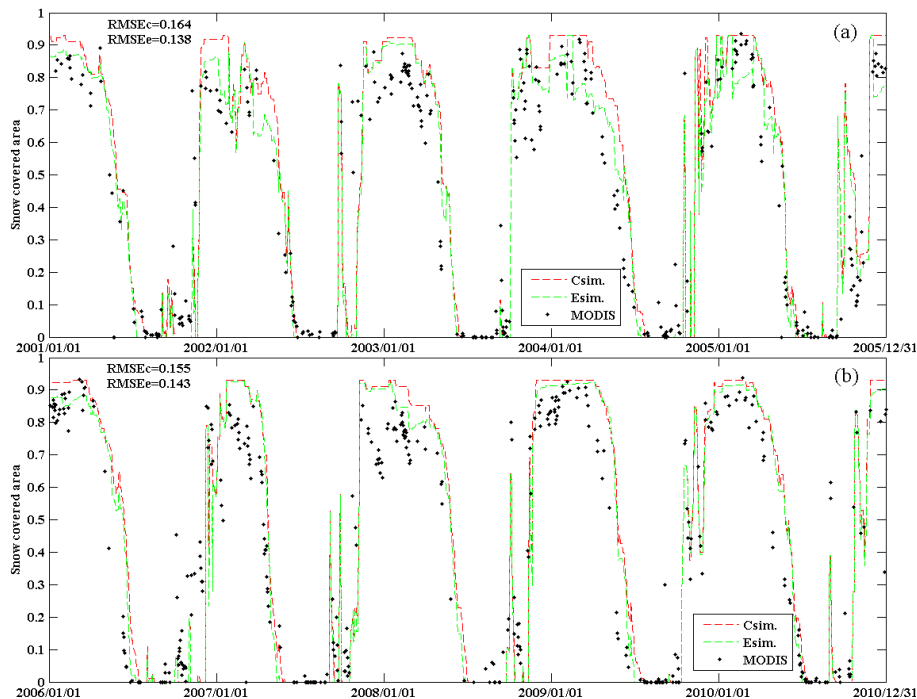


Figure 8. Simulations of the snow covered area (SCA) time series for the Lienz basin (1190 km^2). Red lines (Csim.) represent the SCA simulation using the snowmelt degree-day factor (DDF_S) calibrated on runoff; green lines (Esim.) represent the SCA simulation using snowmelt degree-day factors estimated from snow data. Black dots are the MODIS observed SCA values. **(a)** is for the calibration period and **(b)** is for the validation period. The simulations are evaluated by RMSE_c for the calibrated DDF_S and RMSE_e for the estimated DDF_S .

[Title Page](#)
[Abstract](#)
[Introduction](#)
[Conclusions](#)
[References](#)
[Tables](#)
[Figures](#)
[◀](#)
[▶](#)
[◀](#)
[▶](#)
[Back](#)
[Close](#)
[Full Screen / Esc](#)
[Printer-friendly Version](#)
[Interactive Discussion](#)


Estimating degree day factors from MODIS for snowmelt runoff modeling

Z. H. He et al.

Title Page

Abstract

Introduction

Conclusions

References

Tables

Figures



Back

Close

Full Screen / Esc

Printer-friendly Version

Interactive Discussion

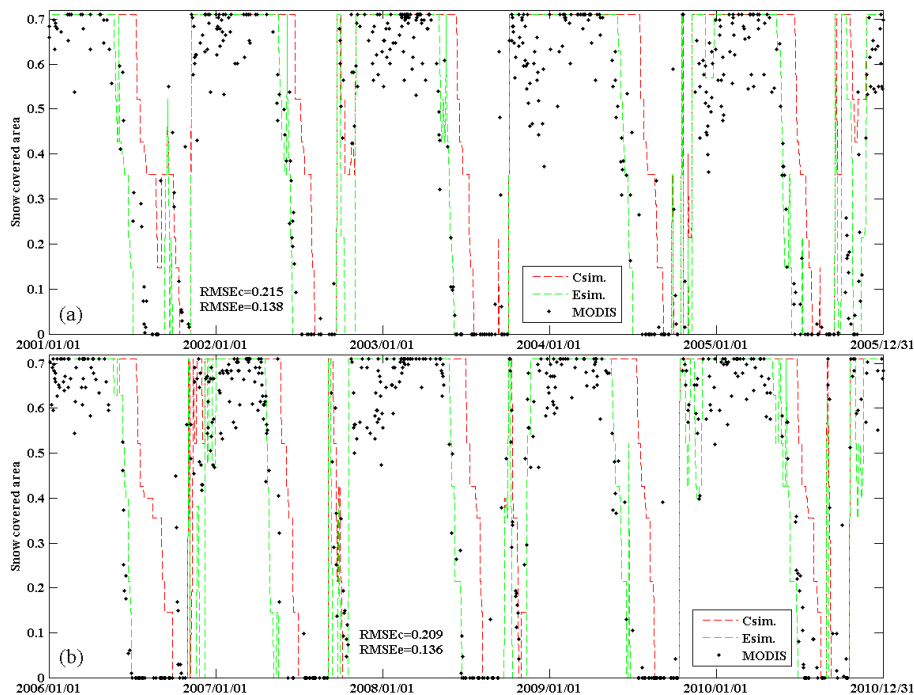


Figure 9. Same as Fig. 8 but for the Innerschloess basin (39 km^2).

Estimating degree day factors from MODIS for snowmelt runoff modeling

Z. H. He et al.

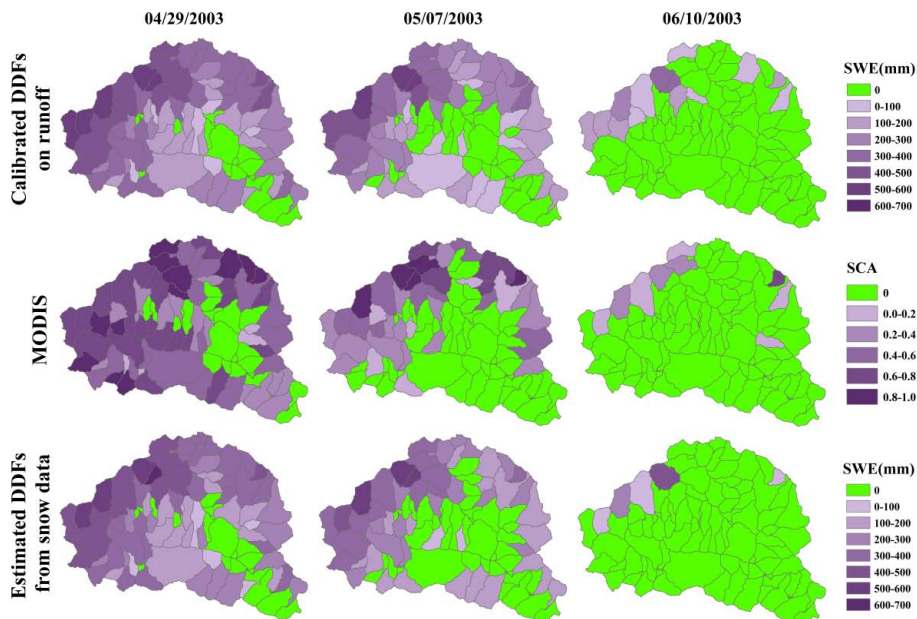


Figure 10. Simulations of snow patterns on three days within the calibration period (29 April, 7 May and 10 June 2003). The top row shows simulated snow water equivalent (SWE) using DDF_S calibrated on runoff, the middle row shows snow covered area (SCA) observed by MODIS, and the bottom row shows simulated snow water equivalent using DDF_S estimated from snow data.

Title Page

Abstract

Introduction

Conclusions

References

Tables

Figures

⏪

⏩

◀

▶

Back

Close

Full Screen / Esc

Printer-friendly Version

Interactive Discussion



Estimating degree day factors from MODIS for snowmelt runoff modeling

Z. H. He et al.

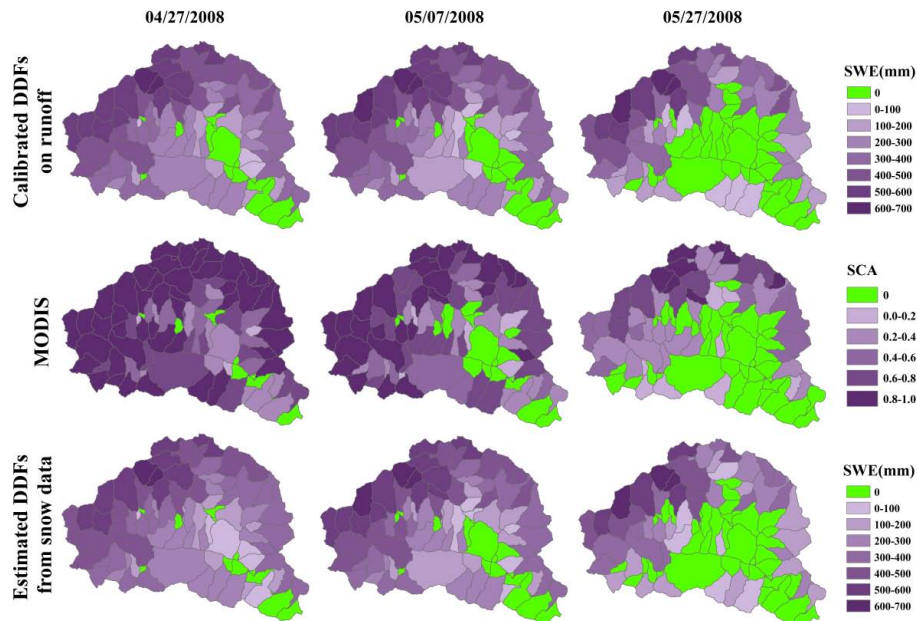


Figure 11. Same as Fig. 10 but for three days within the validation period (27 April, 7 May and 27 May 2008).

[Title Page](#)

[Abstract](#)

[Introduction](#)

[Conclusions](#)

[References](#)

[Tables](#)

[Figures](#)

[⏪](#)

[⏩](#)

[◀](#)

[▶](#)

[Back](#)

[Close](#)

[Full Screen / Esc](#)

[Printer-friendly Version](#)

[Interactive Discussion](#)

