

Dear Professor Dr. Zehe,

We have revised the manuscript “Divergence of reference evapotranspiration observations with windy tropical conditions” (hess-2014-192), previously published in *Hydrology and Earth System Science Discussions* and with a decision of “major revision” by the editor, Asst. Professor Lixin Wang.

Our major revisions to the manuscript include addition of a Table (Table 2) which details the hydrologic inputs (rain and irrigation), including supporting details for the rain and irrigation data, and a Supplemental Section (Supplemental S1), which details the cross-validation activities we conducted to ensure accurate Eddy Covariance ET observations. Along with these major changes, we have revised the figures to enhance clarity, added additional details contextualizing the quality of the Eddy Covariance observations and soil moisture observations, and made other textual changes at the request of the reviewers. These changes are detailed in the following response to reviewer comments, and in the attached marked up manuscript that shows the textual revisions.

Please feel free to contact me if you have any questions about this manuscript. Thank you for your time and consideration of the manuscript for *Hydrology and Earth System Sciences*.

Sincerely,

Ray G. Anderson, PhD.
USDA-Agricultural Research Service

Below are our responses to the reviewer comments. Much of our scientific response is detailed in our original, public, responses to reviewer 1 (<http://www.hydrol-earth-syst-sci-discuss.net/11/C2863/2014/hessd-11-C2863-2014.pdf>) and the review by Dr. Waterloo (<http://www.hydrol-earth-syst-sci-discuss.net/11/C3016/2014/hessd-11-C3016-2014.pdf>), and we highly encourage editors and reviewers to read these comments as they contain more details about the scientific rationale for our experimental design and observational procedures.

For the purposes of brevity, we will focus on our specific revisions in response to the reviewers' comments and refer to the above public responses as response to reviewer 1 (RTR1) and the response to the review by Dr. Waterloo (RTW). We reprint both reviewers' comments in full. Some of our text below is drawn from RTR1 and RTW.

Response to Anonymous Reviewer #1 – comment on “Divergence of reference evapotranspiration observations with windy tropical conditions”

We thank reviewer 1 for their review of our manuscript. Our comments and responses will be in this font (Times New Roman, bolded blue text), and the original comments from reviewer one will be in a different font (Arial, regular black text).

Major critique 1 focused on the accuracy of the evapotranspiration observations from the Eddy Covariance tower. Specific overall comments included:

- “1. Authors do not have an independent measurement of sugarcane ET to disprove or to confirm the measured ET with the EC system.
2. They do not have a water balance data (input and output) to at least confirm the seasonal sugarcane ET. For this purpose they need a record of the input (rain and irrigation) and a measurement of the water content in the soil profile.
3. It is well known that EC measurements tend to underestimate ET and thus the calculation of bulk canopy resistance by inverting the Penman-Monteith equation is irrelevant given the large discrepancy of measured and calculated ET.”

As discussed in RTR1 and RTW, we do have a record of hydrologic inputs to both fields. These are now shown in Table 2 per Dr. Waterloo's suggestion and are broken out for the entire observational period and the mid-period. The record of the hydrologic inputs is discussed on page 5, lines 9-12 and in Supplemental S1.

Along with the new Table 2, we have included additional discussion of the Soil VWC observations in the context of Hawaiian sugarcane root depth (page 11, lines 25-27) to support that the cane row VWC at 20 cm was indicative of root zone soil moisture.

As discussed extensively in RTR1, energy balance corrected ET observations generally agree well with other methods, and the quality of EC observations at our sites were generally high compared with other EC towers. We have included additional specific information about the low-slope surrounding both EC towers (page 5, lines 22-24) and, in the discussion, we reiterate the high energy balance closure (page 16, lines 22-23) observed at Windy in addition to the full discussion of energy budget closure at both sites discussed in the results in the original version.

Another related issue that the reviewer indicated was with the instrumentation. Specific comments on this issue include:

“Page 6479 line 8. This does not mean that the values obtained with the EC system are correct. The authors have made the implicit assumption that because all instruments were factory calibrated the results must be correct. An instrument can be calibrated but still give the wrong value for the parameter being measured.”

And

“Page 6483. The measurement of leaf stomatal resistance with the Decagon SC-1 instrument has been shown to have problems under field conditions.”

Our full response to the instrumentation issues is detailed in RTR1. Much of this information has been now included in a new supplemental section (Supplemental S1), which details the cross-checks and calibrations we conducted with the EC instrumentation to ensure accurate data. Along with Supplemental S1, multiple additions to the main text were also made. We include information about the manufacturer’s (Campbell Scientific) ISO certification with respect to instrument calibration (page 6, lines 12-13). Finally, with respect to the Decagon SC-1, we include multiple, recent citations where the SC-1 has been used to assess crop response to irrigation strategies (page 10, lines 9-10). All of these activities give us confidence in the quality and accuracy of the data we collected, and we include them in detail for the reader’s information. We include the cross-validations in a supplemental section due to the existing length of the paper.

We now turn to the 2nd major critique the reviewer raised concerning the high ET_0 and ET_r calculations at the Windy field. Specific comments from the reviewer on this issue include:

“Further, based on the results of the calculated ET using the ASCE method, it appears that perhaps the authors have made a mistake in their calculations as some of the values given in Fig. 4 of 10 – 12 mm/d of ET are too high for the environmental conditions of their site. I suggest that the authors revisit these calculations and make sure that the correct input is used, particularly for global shortwave irradiance [MJ/m² d]. As an example, I calculated the daily

reference ET using the ASCE method (15 July) Site ETgrass [mm/d] ETalfalfa [mm/d] Lee 4.3 4.8 Windy 4.8 6.1. Input values used were taken from Table 1, except for irradiance, dewpoint and pressure, for the Lee site for the middle of July: Latitude: 20.784664 Longitude: 156.403869 Elevation: 203 m Tmax, air: 27.3 °C Tmin, air: 17.8 °C Average daily dewpoint temperature: 19.4 °C (from NOAA) Average daily rh: 65 Average daily wind speed: 2.0 m/s Average daily barometric pressure: 100 kPa (from NOAA)".

And

"Upon inspection of the calculated values of reference ET it seems that some of the values reported are too high. Values of reference ET of 10 mm/d seem too large for the experimental site. Values of reference ET > 10 mm/d are normally associated with high air temperature (> 30 °C), low air humidity (< 10 % Tdew), large daily shortwave irradiance (> 30 MJ/m² d), and windy conditions (> 5 m/s). These are conditions of the semiarid High Plains of US in the middle of the summer. These are not the conditions at the experimental site. Tropical environments, because of proximity to equator and a 12-hour day usually have daily ET values in the 4 –8 mm/d range."

We provided a counter example using public meteorological data in RTR1. We discuss this data source and the generally higher reference ET values in the discussion (page 16, lines 15-19).

We now move onto address specific comments from reviewer 1.

"This paper deals with ET of sugarcane and as such the authors include information that is not relevant to the topic. For example, the data plotted in Fig. 2 is not relevant and should be deleted. The data of measured soil water content (Fig. 3d) is of no importance for this work."

As discussed in RTR1, we believe that plant canopy cover and root zone soil moisture status are key factors in controlling actual ET, and presentation of these data are critical for showing that the observed reference ET-ET discrepancies are not due to plant water stress or incomplete cover. We respectfully disagree with reviewer 1 on this point.

"1. It would be helpful if the authors used the same symbols for terms as given by the ASCE for reference ET. This is one of the reasons the ASCE introduced a "standard" equation and symbols to avoid confusion."

Our rationale for the original symbol choice was discussed in RTR1. We have changed equation 2 to match the nomenclature of the ASCE equation as presented in Allen et al. (2005).

"2. Page 6475 line 25. The ASCE and FAO-56 are essentially same calculation."

. We discuss both in the introduction to increase relevance for international readers who may not be as familiar with the American Society of Civil Engineers.

We have now added a sentence in the introduction (page 4, lines 21-22) that states that daily ASCE ET_0 is identical to FAO-56 ET_0 .

“3. Page 6476 line 18. All irrigation is supplemental.”

We have changed “supplemental irrigation” to “irrigation need” here (page 3, line 31)

“4. Page 6477 line 15. Essentially they only have one objective. The objectives read as an afterthought, i.e., the measured and calculated ET differed and therefore we need another objective. Objectives 2 and 3 are not objectives.”

As we discuss in RTR1, we view testing methods, identifying mechanisms for discrepancies, and proposing improvements to correct discrepancies as separate, but related, objectives.

“5. Page 6477 line 25. A common mistake is to refer to the measured value of “radiation” with a pyranometer as solar radiation. This is incorrect it is solar irradiance, a property of the receiver. Radiation is a property of the source.”

We have changed “solar radiation” to “solar irradiance”.

“7. Page 6479. Was shortwave global irradiance measured?”

As discussed in RTR1, we did not measure irradiance at the tower sites. Shortwave irradiance was measured and used from nearby weather stations as discussed now in Supplemental S1.

“8. Page 6479 line 10. What is the purpose of measuring soil water content at one depth?”

As discussed in RTR1, we believed that there may be some lateral water flow worth investigating. However, the 20cm depth sensor under the cane line is in the middle of the root zone (page 11, lines 25-27).

“9. Page 6482 – section 2.4. This section is irrelevant to the topic of this paper.”

As we mentioned above and in RTR1, the plant canopy data is important for showing that the discrepancies we observed were not due to variations in crop ET coefficient. As such, we believe this section is highly relevant to this manuscript. We respectfully disagree with reviewer 1 on this point.

“11. Figures. In some of the figures it is difficult to discern what values are plotted and what corresponds to what site.”

Following the suggestions of reviewer 1, Dr. Waterloo, and another internal colleague reviewer, we have redone the figure presentation. In particular, the figure symbols in Figs. 3, 4, 10, and 11 were redone to enhance separation between the different variables/sites. Furthermore, the color legends on figures where both fields are plotted on the same axes were revised so that Windy had blue symbols and Lee was black.

Response to Dr. Waterloo's comment on "Divergence of reference evapotranspiration observations with windy tropical conditions".

We thank Dr. Waterloo for his thorough review, commendations, and recommendations. We respond to his specific comments and technical corrections (noted below in *italicized text*)

Title: I would suggest to include "actual evapotranspiration" and "irrigated sugarcane" in the title, e.g. "Divergence of actual and reference evapotranspiration observations for irrigated sugarcane with windy tropical conditions".

We have revised the title per Dr. Waterloo's suggestion.

Section 2.1. The eddy covariance technique needs a good fetch and preferably a rather flat surface within the fetch. What was the relief of the area surrounding the towers, is the general area sloping towards the west as suggested by the drainage pattern? Does this have implications for the rotation needed to create an average vertical wind speed of zero for the EC system?

As also discussed above, there is a low-slope (<3%) surrounding both EC towers (now discussed on page 5, lines 22-24). This has minimal implications for the coordinate rotation for EC.

Rainfall varies between 275 and 1275 mm/y. The towers are in the South, so was rainfall input at the sites much lower than ET_EC (1170-1390 mm/y)?

Yes. As discussed in RTW and now shown in Table 2, precipitation was a small (<10%) portion of the total hydrologic input due to the drought on Maui during the study period.

Sections 3.2 and 3.3. Different cumulative / daily actual and reference evapotranspiration rates are presented in the text for mid-period and for the whole period (the latter not for ET_EC unfortunately!). I would like to suggest that a summary of these ET rates be presented in a table for easier comparison. I would like to suggest that this table also include information on cumulative rainfall in the different periods and additional irrigation inputs to provide a water balance summary. Inclusion of the latter values would perhaps better support the contention of the authors, expressed on page 6492, l. 18, that cumulative ET_EC was always lower than irrigation plus precipitation.

We have followed Dr. Waterloo's recommendation and have added Table 2 to show hydrologic inputs, reference ET, and measured ET for the entire study period and for the mid-period.

*Section 4.1. The actual evapotranspiration rate ET_{EC} presented here is based on dry canopy conditions (transpiration + soil evaporation), as the eddy covariance system does not give reliable estimates under rainfall and wet canopy conditions. These missing wet canopy periods were filled using the Max Planck Institute tool based on results from (dry) periods with similar micrometeorological conditions. Rainfall interception loss is perceived quite low for sugarcane in Brazil (4-7% of precipitation - P.R. Leopoldo and A. de P'adua Sousa and S. T. Filho, *Intercepta\ccão da \ 'aqua de Chuva em Cultura de Cana-de-a\cc\ 'ucar, Brasil A\ccucareiro*, 1981, 98, 6, pp. 9-16; Cabral, O.M.R. and da Rocha, H.R. and Gash, J.H.C. and Ligo, M.A.V. and Tatsch, J.D. and Freitas, H.C. and Brasilio, E., *Water use in a sugarcane plantation, Global Change Biology - Bioenergy*, 2012, 4, 5, pp. 555-565).*

Arguably, actual evapotranspiration ET_{EC} may be somewhat underestimated because rainfall interception losses may have been higher than the corresponding transpiration values used for gap filling under the specific high wind / low aerodynamic resistance conditions of the Hawaii sites, and with possible advection effects due to the proximity of the ocean to the sites. Would it be possible to comment on this in the discussion?

We now comment on this gap filling issue in section 4.1 (page 16, lines 27-31), including our rationale for why it would have minimal impact on the observations of actual ET.

*Authors might also compare their actual evaporation rates and rc and ra values for sugarcane with those also observed by eddy covariance by Cabral et al. (Cabral, O.M.R. and da Rocha, H.R. and Gash, J.H.C. and Ligo, M.A.V. and Tatsch, J.D. and Freitas, H.C. and Brasilio, E., *Water use in a sugarcane plantation, Global Change Biology - Bioenergy*, 2012, 4, 5, pp. 555-565).*

We now discuss the crop coefficients of Cabral et al. in section 4.1 (page 16, lines 6-7). We note that this system is rain fed and has a substantially different reference ET regime than our sites in Hawaii, thus a comparison of crop coefficients may be more appropriate.

6476 l. 18-19: Reference Hoogebloom should be Hoogenboom, correct in reference list 6477 l. 10: Reference again, Hoogenboom should be Hoogenboom 6481 l. 21: place dot (.) after , respectively) to end sentence

We thank Dr. Waterloo for catching this, and we have made this change in the revised version.

Markers in Figure 11 are very closely plotted making these difficult to distinguish, use different colours here perhaps?

As discussed above in response to reviewer 1, we have revised Fig. 11 and other figures to make it easier to distinguish individual data points and to enhance presentation consistency across all figures.

Divergence of [actual and](#) reference evapotranspiration observations [for irrigated sugarcane](#) with windy tropical conditions

R. G. Anderson^{1,*}, D. Wang¹, R. Tirado-Corbalá^{1,§}, H. Zhang^{1,¶}, J. E. Ayars¹

[1]{USDA, Agricultural Research Service, San Joaquin Valley Agricultural Sciences Center, Water Management Research Unit, Parlier, California, USA}¹

[*]{now at: USDA, Agricultural Research Service, U.S. Salinity Laboratory, Contaminant Fate and Transport Unit, Riverside, California, USA}

[§]{now at: [Crops and Agro-Environmental Science Department, University of Puerto Rico, Mayagüez, Puerto Rico, USA](#)},

[¶]{now at: [USDA, Agricultural Research Service, Water Management Research Unit, Fort Collins, Colorado, USA](#)}

Correspondence to: R. G. Anderson (ray.anderson@ars.usda.gov)

Abstract

Standardized reference evapotranspiration (ET) and ecosystem-specific vegetation coefficients are frequently used to estimate actual ET. However, equations for calculating reference ET have not been well validated in tropical environments. We measured ET (ET_{EC}) using Eddy Covariance (EC) towers at two irrigated sugarcane fields on the leeward (dry) side of Maui, Hawaii, USA in contrasting climates. We calculated reference ET at the fields using

¹ Note: The U.S. Department of Agriculture (USDA) prohibits discrimination in all its programs and activities on the basis of race, color, national origin, age, disability, and where applicable, sex, marital status, familial status, parental status, religion, sexual orientation, genetic information, political beliefs, reprisal, or because all or part of an individual's income is derived from any public assistance program. (Not all prohibited bases apply to all programs.) Persons with disabilities who require alternative means for communication of program information (Braille, large print, audiotape, etc.) should contact USDA's TARGET Center at (202) 720-2600 (voice and TDD). To file a complaint of discrimination, write to USDA, Director, Office of Civil Rights, 1400 Independence Avenue, S.W., Washington, D.C. 20250-9410, or call (800) 795-3272 (voice) or (202) 720-6382 (TDD). USDA is an equal opportunity provider and employer.

Formatted: Font: 12 pt

Formatted: Font: 12 pt

Formatted: Font: 12 pt

1 the short (ET_0) and tall (ET_r) vegetation versions of the American Society for Civil Engineers
2 (ASCE) equation. The ASCE equations were compared to the Priestley-Taylor ET (ET_{PT}) and
3 ET_{EC} . Reference ET from the ASCE approaches exceeded ET_{EC} during the mid-period (when
4 vegetation coefficients suggest ET_{EC} should exceed reference ET). At the windier tower site,
5 cumulative ET_r exceeded ET_{EC} by 854 mm over the course of the mid-period (267 days). At
6 the less windy site, mid-period ET_r still exceeded ET_{EC} , but the difference was smaller (443
7 mm). At both sites, ET_{PT} approximated mid-period ET_{EC} more closely than the ASCE
8 equations ($(ET_{PT}-ET_{EC}) < 170$ mm). Analysis of applied water and precipitation, soil moisture,
9 leaf stomatal resistance, and canopy cover suggest that the lower observed ET_{EC} was not the
10 result of water stress or reduced vegetation cover. Use of a custom calibrated bulk canopy
11 resistance improved the reference ET estimate and reduced seasonal ET discrepancy relative
12 to ET_{PT} and ET_{EC} for the less windy field and had mixed performance at the windier field.
13 These divergences suggest that modifications to reference ET equations may be warranted in
14 some tropical regions.

15

16 **1 Introduction**

17 Accurate estimates of evapotranspiration (ET) are needed for numerous purposes including
18 efficient irrigation scheduling (Davis and Dukes, 2010), parameterizing and running different
19 classes of biogeochemical and hydrologic models (Fisher et al., 2005; Zhao et al., 2013),
20 assessing changes in regional hydrology under different cultivation systems (Ferguson and
21 Maxwell; 2011; Holwerda et al., 2013; Waterloo et al., 1999), and evaluating the impacts of
22 agricultural production on regional and global climate (Kueppers et al., 2007; Lo and
23 Famiglietti, 2013; Puma and Cook, 2010) and hydrology (Anderson et al., 2012; Vörösmarty
24 et al., 1998). In irrigated agriculture, underestimation of required ET can lead to sub-optimal
25 yield due to water stress (Kang et al., 2002), whereas overestimation of ET can lead to
26 excessive applied water, thus reducing water available for other uses or additional acreage
27 (Perry, 2005), degrading water quality (Smith, 2000), and decreasing economic
28 competitiveness (Hargreaves and Samani, 1984).

29 While accurate ET estimates are essential, ET can be challenging to measure. Numerous
30 approaches have been developed to measure or estimate ET, including lysimeters (Meissner et
31 al., 2010), micrometeorological methods (Anderson and Goulde, 2009; Baldocchi, 2003;
32 Hemakumara et al., 2003), satellite remote sensing (Bastiaanssen et al., 2005; Tang et al.

2009), and water balance methods. While these approaches vary in their spatial/temporal scale and methodological assumptions and accuracy, most require significant observational costs, technical expertise, or have operational difficulties that are too high for most farmers.

Because of the difficulties in actual ET measurement, the vegetation coefficient/reference ET approach (Jensen, 1968) has gained widespread acceptance for estimating actual ET for varied applications (e.g. Arnold et al., 1998; Cristea et al., 2012). This approach involves calculating a reference ET for a standard land surface, usually grass or alfalfa, using meteorological data and relating the reference surface to the ecosystem/land cover of interest with empirical coefficient(s):

$$ET_A = K_C * ET_0. \quad (1)$$

where ET_A is actual ET, ET_0 is reference ET, and K_c is the coefficient for the specific land cover type. Two of the most commonly used standard methods include the Food and Agricultural Organization (FAO) approach presented in Irrigation and Drainage Paper 56, hereafter referred to as FAO-56 (Allen et al., 1998), and the American Society of Civil Engineers approach, hereafter referred to as ASCE (Allen et al., 2005). Both approaches are based on the combination Penman-Monteith formula (Monteith, 1965) and account for ET from both solar ~~radiation~~irradiation and advectively-driven ET due to wind and vapor pressure deficit (VPD). Both the FAO-56 and ASCE approaches assume standard measurement conditions and surface parameters (e.g. canopy height, surface resistance, albedo, etc.), thus allowing canopy and atmospheric resistance terms to be condensed into constants. Both methods also provide scaling procedures to account for variation in meteorological measurements as well as missing or erroneous data.

Validation work of standardized reference ET equations against large weighing lysimeters with reference surfaces has been done primarily in the western continental U.S. with low atmospheric humidity (Evelt et al., 2000; Jensen et al., 1990). Internationally, most other reference ET validation has been done in Mediterranean climates with similar, low, humidity (Lecina et al., 2003; Ventura et al., 1999). Relatively little evaluation of these equations has been done in areas with higher relative humidity, presumably because of the perceived lack of use for reference ET equations in these areas. However, reference ET equations are used in more humid regions for applications such as watershed modeling (Rao et al., 2011), forecasting water demand (Tian and Martinez, 2012), and determining ~~supplemental~~irrigation

[needs](#) (Suleiman and ~~Hoogebloom~~[Hoogenboom](#), 2007). As such, it is necessary to test these reference ET equations in regions with high relative humidity to ensure accurate ET parameterization.

One major tropical and subtropical crop that has generally high ET is sugarcane. Sugarcane is a good crop to test reference ET parameterizations because of its longer full canopy period, when actual crop ET should be at its maximum relative to reference ET equations, and high crop coefficient that generally exceeds 1. Previous research in irrigated sugarcane has found full-canopy ET rates that equal or exceed evaporation rates from open-water pans (Campbell et al., 1960; Thompson and Boyce, 1967). Since the development and implementation of reference ET equations, researchers have generally found irrigated sugarcane to have a crop coefficient (K_c) greater than 1 in Australia and Swaziland (Inman-Bamber and McGlinchey, 2003), Brazil (da Silva et al., 2012), and Texas (Salinas and Namken, 1977). However, all of these studies found variable and differing K_c values, with Inman-Bamber and McGlinchey noting a correspondence between meteorological events and outlying daily K_c values. Sugarcane's high water use, the potential for expanded irrigation to reduce yield deficits and increase production in tropical regions (Inman-Bamber et al., 1999), and the potential for sugarcane irrigation to stress water resources during dry periods in tropical areas (Ramjeawon, 1994), make it a good case study for evaluating reference ET equations in tropical regions.

To evaluate the performance of standardized reference ET equations, we established two Eddy Covariance towers over irrigated sugarcane fields in Hawaii, USA to measure ET (ET_{EC}). We calculated reference ET using the ASCE approach for short (ET_0) and tall (ET_L) reference vegetation. The FAO-56 ET_0 was not used as it is identical to ASCE ET_0 for calculations on a daily time step (Irmak et al., 2006; Suleiman and ~~Hoogebloom~~[Hoogenboom](#), 2009). We also compared ET_{EC} to the Priestley-Taylor (PT) ET equation (ET_{PT}). Our objectives were (1) to determine if standardized reference ET equations adequately parameterized actual ET across differing microclimates, (2) determine the meteorological conditions that contribute to discrepancies in the standardized equations and (3) examine corrections to improve estimates of reference ET under relatively more humid conditions.

2 Methods

2.1 Study region

1 We evaluated reference ET approaches in two sugarcane (*Saccharum officinarum* L.)
2 fields with identical cultivars (Heinz et al., 1981) at a commercial farm on Maui, Hawaii,
3 USA (Fig. 1 and Table 1). Climatic conditions vary across the farm, with changes in
4 precipitation, wind, solar ~~radiation~~[irradiation](#), and air temperature due to orographic effects.
5 Normal annual precipitation ranges from 275 mm/year to 1275 mm/year from the leeward
6 (south) side to the windward (northeast) side of the plantation (Giambelluca et al., 2013).
7 Elevations on the plantation range from near sea level to ~340 m. The western side of the
8 plantation is generally windier (Table 1). Drip irrigation is used to maximize limited surface
9 and ground water resources (Moore and Fitschen, 1990); drip tape spacing is 2.70 m with
10 sugarcane rows planted 45 cm away from the tape on both sides-; [the tape irrigates at 1.58 L⁻¹](#)
11 [hour⁻¹ m⁻¹ and is regulated to 83 kPa of pressure at the head of the row. Irrigation amounts](#)
12 [were recorded by the farm; rainfall was recorded at nearby weather stations \(Supplemental](#)
13 [S1\).](#)As is typical for Hawaii (Heinz and Osgood, 2009), sugarcane is grown on a 24 month
14 rotation with planting and harvesting throughout most of the year. Peak ET, as determined by
15 the length of the mid-season period, lasts significantly longer (330 days) than for sugarcane in
16 other regions (190-220 days) (Doorenbos and Pruitt, 1977; Inman-Bamber and McGlinchey,
17 2003).

18 2.2 Eddy Covariance measurements and data analysis

19 We installed two micrometeorological towers in contrasting micro-climates (Fig. 1 and
20 Table 1). These towers are at the “Windy” site (lower elevation, higher wind velocity, more
21 constant wind direction, and sandy clay loam soil) and the “Lee” site (higher elevation, lower
22 wind velocity, and clay soil). Field fetch in the prevailing wind directions was over 200 m for
23 both towers. [The slope in both fields, as determined using the 1/3 arcsec \(~10 m\) Digital](#)
24 [Elevation Model from the US Geological Survey’s National Elevation Dataset](#)
25 [\(http://ned.usgs.gov/index.html\), is less than 3%](#) Beyond the edge of each field, Windy was
26 surrounded by sugarcane fields on all sides for over 1500 m; Lee was bordered by non-
27 irrigated rangeland in the non-prevailing wind directions (east and south) and contiguous
28 sugarcane fields on the north and east.

1 Tower instrumentation included an integrated Eddy Covariance system (EC150 - Campbell
2 Scientific, Logan, Utah, USA²) with an open-path infrared gas analyzer, aspirated temperature
3 probe, attached 3-D sonic anemometer head (CSAT3A - Campbell Scientific), and enhanced
4 barometer (PTB110 – Vaisala, Vantaa, Finland). Relative humidity and air temperature were
5 measured by a combined temperature and relative humidity probe (HMP45C – Vaisala). Net
6 radiation was measured with a single component net radiometer (NR-Lite2 – Kipp and Zonen,
7 Delft, Netherlands). We corrected the single component net radiometer for the effect of wind
8 following Cobos and Baker [2003]. Ground heat flux was measured as the average of four
9 self-calibrating heat flux plates (HFP01SC – Huskeflux, Delft, Netherlands). The plates were
10 installed at 5 cm depth at four lateral locations perpendicular to the irrigation drip line
11 (Section 2.1): 0 cm (drip line), 45 cm (sugarcane row), 75 cm, and 135 cm (mid-point
12 | between drip lines). All instruments were factory calibrated [to ISO 9001:2008 standards](#) prior
13 to deployment; data were recorded and processed on solid state dataloggers (CR3000,
14 Campbell Scientific).

15 Two Water Content Reflectometry probes (CS616 – Campbell Scientific) were installed at 20
16 cm depth at lateral two locations perpendicular to the drip line (45 and 135 cm) to measure
17 soil volumetric water content (VWC). These locations were chosen to correspond with the
18 sugarcane row (center of root zone) and halfway between sugarcane rows. VWC was
19 measured to independently assess potential water stress in both fields. VWC was calculated
20 using a quadratic equation with empirically determined coefficients specific to each field
21 following the manufacturer's recommendation. For the calibration, three ~19 L (5 U.S.
22 gallon) water coolers (Internal height 46.6 cm, internal diameter 32.8 cm) were used to
23 calibrate each soil. We inserted the probe rod vertically in the center (middle) of the
24 experimental coolers into the soil ensuring full contact with the soil. Then, the coolers were
25 closed with their respective lids to allow the system to equilibrate before taking account of the
26 period readings for each VWC. For the upper 40 cm of soil in each field, we determined bulk
27 density, porosity, and soil texture (Bouyoucus, 1962) and soil water retention characteristics
28 (Windy field only) with samples from 3 locations within the tower footprint. Soil water
29 retention characteristic (from saturation point to 1 bar) were determined for the Windy soil

² Mention of trade names or commercial products in this publication is solely for the purpose of providing specific information and does not imply recommendation or endorsement by the U.S. Department of Agriculture.

using Tempe Cells (1400 Series, Soil Moisture Equipment Corp, Santa Barbara, California, USA). Water retention characteristics could not be determined in Lee field because of the logistical difficulty and equipment risk in obtaining intact Tempe Cell samples below the surface due to rockiness at the Lee site. Permanent wilting point (PWP) was determined using a dew point potentiometer (WP4C, Decagon Devices, Inc., Pullman, Washington, USA). Soil water depth was determined for the upper 40 cm by converting soil VWC with porosity and subtracting PWP.

The EC150 system measured CO₂, H₂O, wind velocity, and sonic temperature at 10 Hz. Other variables were averaged to 30 minute fluxes. We processed raw covariances on the datalogger and post-processed high frequency time series data with commercial software (Eddy Pro Advanced V 3.0 and 4.0 – LI-COR, Lincoln, Nebraska USA). Datalogger flux calculations were downloaded daily via cellular modem. High frequency (10 Hz.) data and half hourly fluxes were transferred monthly via data card. Raw time series data were checked following Vickers and Mahrt's (1997) tests. Sonic anemometer tilt was corrected using double rotation (Kaimal and Finnigan, 1994); lags between the infrared gas analyzer and sonic anemometer were determined using maximum covariance. We corrected for density fluctuations (Webb et al., 1980), low pass filtering (Moncrieff et al., 1997), and high pass filtering (Moncrieff et al., 2004). Flux footprint lengths were calculated following Kljun et al. (2004), and quality flags were assigned following the CarboEurope standard (Mauder and Foken, 2004). We independently calculated stability (Obukhov, 1971). After installation, tower heights were periodically adjusted to keep meteorological instrumentation ~3.0-3.3 m above the zero plane displacement height, which was assumed to be 67% of canopy height (Arya, 2001). Canopy height was measured biweekly, concurrent with the vegetation cover observations (Section 2.4). [Additional, detailed, EC cross validation activities are described in Supplemental S1.](#)

Half-hourly fluxes with instrumentation errors flagged by the EC150 system, rainfall, or lack of turbulence (friction velocity < 0.1 m/s) were excluded. Excluded fluxes were gap-filled as a function of fluxes measured from similar meteorological periods using the Max-Planck Institute tool (<http://www.bgc-jena.mpg.de/~MDIwork/eddyproc/index.php>) (Reichstein et al., 2005). Gap filled fluxes were used to calculate daily and cumulative fluxes, but were excluded from half hourly analyses. We corrected fluxes for energy budget closure by regressing daily EC observed available energy against measured available energy (net radiation minus ground heat flux) and forcing the regression through the origin, preserving the daily mean Bowen

ratio and adjusting each day's ET by the regression slope for the entire study period (Anderson and Wang, 2014; Leuning et al., 2012).

2.3 Reference ET equations

At each tower, daily and hourly reference ET was calculated using the ASCE short (ET_0) and tall (ET_r) reference equations, where short and tall refer to parameterized surfaces similar to well-watered fescue grass (short) and alfalfa (tall) with differences in the equations due to assumed leaf area index and bulk canopy resistance to ET

$$ET_{ET_0/ET_r} = \frac{0.408\Delta(R_n - G) + \gamma \frac{C_n}{T + 273} u_2 (e_s - e_a)}{\Delta + \gamma(1 + C_d u_2)} \quad (2)$$

As shown in equation 2, ET_{ET_0/ET_r} is the reference ET type (ET_r or ET_0 in mm/day or mm/hour depending on time step), R_n and G are net radiation and ground heat flux ($MJ\ m^{-2}\ day^{-1}$ or $MJ\ m^{-2}\ hour^{-1}$), γ is the psychrometric constant ($kPa\ ^\circ C^{-1}$), T is mean daily or hourly air temperature ($^\circ C$), u_2 is mean daily or hourly wind speed measured at or scaled to 2 m height, e_s and e_a are mean saturation and actual vapor pressure (kPa), respectively, and C_n and C_d are empirical numerator and denominator constants that change with reference surface and time step (Table 1 in Allen et al., 2005). We scaled all meteorological variables from 3 m above the zero plane displacement to 2 m height following the ASCE procedure for adjusting meteorological measurements at non-standard height. Following ASCE, mean daily meteorological values were calculated as an average of daily minimum and maximum values as opposed to averaging all 24 hours of measurements. Differences between these averaging approaches were small (mean T difference of $0.26\ ^\circ C$ and $0.27\ ^\circ C$ in Windy and Lee, respectively). Measured net radiation and ground heat fluxes were used for all calculations.

We also calculated another reference using the Priestley-Taylor (PT) equation (Priestley and Taylor, 1972). PT was chosen as a comparison because of its different treatment of advection versus the Penman-Monteith (PM) type equations, its wide usage, and the relative simplicity of its meteorological inputs compared to PM. The PT equation is

$$ET_{PT} = \frac{\alpha}{\lambda} * \frac{\Delta(R_n - G)}{\Delta + \gamma} \quad (3)$$

ET_{PT} is the PT ET ($mm\ day^{-1}$); Δ , γ , R_n , G are the same as in equation 2; λ is the latent heat of vaporization; and α is an empirical constant. We assumed that λ is $2.45\ MJ\ mm^{-1}$, which is the same as the ASCE/FAO-56 approach. We used an α of 1.26, which is widely, but not

1 universally, representative of a well-watered surface across a variety of climates (e.g.
2 Eichinger et al., 1996; McAneney and Itier, 1996).

3 **2.4 Canopy cover and determination of mid-period**

4 We measured fractional canopy cover with an optical camera to obtain an independent,
5 conservative determination of the mid-season period (mid-period) for intercomparison of
6 measured and reference ET. The mid-period is one of the growth/ET stages in the FAO/ASCE
7 methodology and corresponds to maximum plant transpiration and the highest ecosystem
8 coefficient (K_{c-mid}). In unstressed sugarcane, the mid-period coefficient should exceed 1
9 (Allen et al., 1998), thus measured ET should exceed reference ET. The camera (TetraCam
10 ADC multispectral camera, TetraCam Inc., Chatsworth, California, USA) contains a single
11 precision 3.2 megapixel image sensor optimized for capturing green, red, and near-infrared
12 wavebands of reflected light. A telescoping pole tripod system (GeoData Systems
13 Management Inc., Berea, Ohio, USA) was used to suspend the camera directly above the plant
14 at a height of 7 m and aim vertically downward at nadir view. Each field was photographed
15 every $\sim 16 \pm 2$ days. Ten images were taken in two lines perpendicular to the irrigation line at
16 pre-selected sampling locations in each field at solar noon \pm two hours; sampling locations
17 were identical throughout the study. Each image was preprocessed in image processing
18 software (LView Pro 2006 - CoolMoom Corp., Hallandale, Florida, USA) to paint out the
19 pixels of soil, grass, shadow and other background. The preprocessed image was then
20 analyzed using proprietary software (PixelWrench, TetraCam Inc.) to classify fractional
21 vegetation cover based on threshold analysis, and the cover readings from the ten locations
22 were averaged to determine mean and standard error of field vegetation cover. We considered
23 the beginning of the mid-period to be the latter of the beginning date of mid-period from the
24 FAO-56 K_C curve (Allen et al., 1998) or the date where canopy cover clearly exceeded 80%,
25 which has been shown to coincide with the start of mid-period (Carr and Knox, 2011). The
26 end of the K_{C-mid} period was set to 27 August 2012, which was the last date of irrigation data
27 prior to the end of the FAO-56 mid-period. Finally we further restricted the end of the mid-
28 period in the earlier planted field (Lee) to ensure that the length of the mid-period was
29 identical in both fields for intercomparison purposes.

30 **2.5 Leaf Area Index and stomatal resistance measurements**

We measured Leaf Area Index (LAI) and leaf stomatal resistance in a field campaign during the mid-period for both EC fields (July 2012). LAI was measured using a non-destructive, optical plant canopy analyzer (LAI 2200, LI-COR Inc.) on 13 July in the Lee field and 16 July in the Windy field. At each of the 10 TetraCam sampling locations in each field (Section 2.4), we made 10 below canopy and 5 above canopy measurements with the optical canopy analyzer; we then used the manufacturer's software (FV2200, LI-COR Inc.) to determine mean and standard error of LAI for both fields. To observe leaf level stomatal resistance, we used a steady-state diffusion porometer (SC-1, Decagon Devices Inc.), [which has been used to observe response to different irrigation regimes in multiple agronomic crops \(e.g. Ballester et al., 2013; Hirich et al., 2014; Mabhaudhi et al., 2013; Mendez-Costabel et al., 2014\)](#). At each TetraCam point, 9 leaves were measured: 3 fully sunlit upper canopy leaves near (<20 vertical cm away from) the top visible dewlap (TVD) point (Glaz et al., 2008), 3 mid-level leaves that were attached to the cane stalk below the TVD height but which were still mostly sunlit, and 3 lower canopy leaves that were partially to mostly shaded. Porometry measurements were made in a 30 s measurement window using the porometer's automatic mode. We also repeated the stomatal resistance measurements at five of the TetraCam points in the Windy field to evaluate the larger discrepancies in reference ET observed in that field.

3 Results

3.1 Fractional vegetation cover, leaf area index, and leaf stomatal resistance

Fractional vegetation cover increased rapidly in both fields after the beginning of the EC measurements (Fig. 2). Initial cover was <20% in Windy and < 45% in Lee (112 and 142 days after planting (DAP), respectively). Some early TetraCam sampling dates were missed due to initial equipment failures. Vegetation cover exceeded 80% in Lee on 3 November 2011 and 5 December 2011 in Windy (220 and 208 DAP, respectively); which we considered the onset of the mid-period. Both of these dates are later than the onset of mid-period according to the FAO-56 curve (180 DAP). Variation in cover was largest at the beginning of the study period (standard deviation of ~10%) (Fig. 2). Vegetation cover was least variable near the onset of the mid-period (standard deviation <5%).

Mean (standard error) of measured Leaf Area Index (LAI) was 4.9 (0.2) in Windy on 13 July 2012 and 4.7 (0.3) in Lee on 16 July 2012. Midday leaf stomatal resistance (r_s) observations

of fully sunlit leaves in Windy (n=32) and Lee (n=21) showed substantial variation, ranging from 45 to 259 s m⁻¹ in Windy and 40 to 640 s m⁻¹ in Lee. Median r_s in Windy and Lee were 112 and 114 s m⁻¹, respectively. Mean (standard deviation) of r_s in Windy and Lee were 125 (57) s m⁻¹ and 161 (157) s m⁻¹, respectively. There were two observations in Lee of sunlit stomatal resistance of >500 s m⁻¹. Excluding these two observations resulted in a revised mean and median r_s in Lee of 114 and 104 s m⁻¹, respectively. Mean sunlit stomatal resistance was not significantly different ($p < 0.01$) from 100 s m⁻¹ in either Windy ($p = 0.02$) or Lee ($p = 0.09$).

3.2 Meteorological observations

Air temperature and net radiation were similar in both Windy and Lee (Figs. 3a and 3c; Table 1). In Windy, mean daily air temperature ranged from 19.0 to 25.0 °C over the Study Period whereas in Lee mean daily air temperature ranged from 19.7 to 26.3 °C. Mean air temperature was higher in Windy than Lee (23.5 and 22.3 °C, respectively) with a similar, low day to day variability (standard deviation of 1.3 °C for both fields). Daily net radiation (Rn) was also similar between fields; Rn was slightly higher in Windy versus Lee (11.5 and 10.9 MJ m⁻² day⁻¹; Fig. 3c and Table 1). Both fields showed larger relative variations in Rn (~10 MJ m⁻² day⁻¹) than in other meteorological observations. Wind velocities were sharply divergent between the two fields. Mean wind velocity was more than twice as high (4.6 m s⁻¹ versus 2.0 m s⁻¹) in Windy compared to Lee (Fig. 3b; Table 1). Wind velocities were also more variable in Windy than Lee (standard deviation of 1.4 and 0.7 m s⁻¹, respectively).

Soil volumetric water content (VWC) observations in the Windy field underneath the sugar cane row/line varied from 23-30% during the mid-period except after major rain events in December 2011 and March 2012 when they spiked to 36-37% (Fig. 3d). At all times, VWC remained well above wilting point (12%) for both sensors (Table 1). Available plant water in the top 40 cm of the soil at minimum VWC was ~40 mm. Soil matric potentials in Windy near typical maximum (30%) and minimum (24%) soil VWC were -0.01 and -0.033 MPa, respectively (Table 1). [Shallow VWC observations underneath the cane row are likely indicative of plant water stress due to the majority of drip-irrigated Hawaiian sugarcane roots being at less than 50 cm depth \(Evensen et al., 1997\).](#) VWC observations between drip lines showed relatively little periodicity compared to underneath the cane row, indicating that neither irrigation events nor root depletion was impacting VWC at this location. Due to difficulties with instrument installation and instrument failure, we were not able to obtain a

reliable time series of soil VWC observations in the Lee field. [Precipitation at both fields was less than 150 mm over the course of the study, with irrigation providing more than 90% of the water input \(Table 2\)](#)

From tower establishment to the end of the study period, daily EC measured evapotranspiration (ET_{EC}) ranged from 1.6 to 5.5 mm day⁻¹, with a mean of 3.2 mm day⁻¹, in Lee and 1.6 to 5.5 mm day⁻¹, with a mean 3.8 mm day⁻¹, in Windy (Fig. 4). ET_{EC} showed relatively little seasonal variation (<3 mm day⁻¹ from summer maxima to winter minima) and greater day to day variations of 1-2 mm day⁻¹. Cumulatively, mid-period ET_{EC} ~~totaled 848~~ [was 158 mm in Lee and 1002 mm higher in Windy than in Lee](#) (Fig. 5; Table 2). Factors contributing to higher ET_{EC} in Windy include higher wind speed, slightly higher R_n , a higher mean air temperature, and lower mean daily relative humidity. However, maximum daily air temperature is higher near Lee than Windy. Ground heat flux was minimal (<3% of R_n during daytime periods) at both sites during the mid-period.

Quality control checks on the EC data indicated no significant issues with ET measurements. Energy closure varied significantly between the sites, with daily energy closure of the turbulent fluxes of 75% at Lee and 97% at Windy. As data processing and instrumentation were identical between sites, the difference in energy closure is very likely due to the differences in topography and turbulence between the two fields, particularly nighttime turbulence (Anderson and Wang, 2014). Friction velocity at Windy rarely dropped below the critical threshold (0.1 m s⁻¹) at night (2.5% of the half hourly fluxes). Mean 90% footprint lengths during the Study Period determined following Kljun et al. (2004) were 158 m in Windy and 124 m in Lee, which indicate that our EC towers were observing the field of interest even during the rare periods (~7% of record) where we were observing in the short fetch direction (Table 1) such as during Kona winds (winds from the south and west). During the predominant trade wind flows (prevailing winds from the northeast), our fetch in both fields was >200 m.

3.3 Reference ET at EC tower sites

Daily short (ET_0) and tall (ET_r) ASCE reference ET were significantly different between the two sites (Fig. 4). In Windy, ET_0 ranged from 1.6 to 8.1 mm day⁻¹ over the study period with a mean of 5.2 mm day⁻¹ (5.1 mm day⁻¹ over the mid-period). ET_r ranged from 2.0 to 12.3 mm day with a mean of 7.14 mm day⁻¹ (7.0 mm day⁻¹ for mid-period). For Lee, ET_0 varied from

0.6 to 6.5 mm day⁻¹ with a mean of 4.0 mm day⁻¹ (3.9 mm day⁻¹ for mid-period). For ET_r, the range was 0.8 to 8.6 mm day⁻¹ with a mean of 5.0 mm day⁻¹ (4.8 mm day⁻¹ mid-period). The Priestley-Taylor ET (ET_{PT}) showed less difference between the two fields. Mean ET_{PT} was slightly higher at Windy (4.3 mm day⁻¹ and 4.1 mm day⁻¹ mid-period) than at Lee (4.0 mm day⁻¹ and 3.8 mm day⁻¹ mid-period).

Over the course of the study, Windy's cumulative ET₀ was 1483 and 2095 mm higher than in Lee, and Windy, respectively, while cumulative ET_r was 4823 and 2855 mm higher (Fig. 5; Table 2). Similar to the daily values, cumulative ET_{PT} values were considerably closer, 1466 mm at Windy exceeding Lee and 1703 mm at Windy. As expected, the cumulative difference between reference equations and ET_{EC} grew in the early portion of the study period, prior to the mid-period (Fig. 5). During the mid-period, the difference between ET_r and ET_{EC} grew significantly larger in both EC fields. Windy also saw increasing differences between ET₀, ET_{PT}, and ET_{EC}, whereas in Lee cumulative ET₀ and ET_{PT} tracked quite closely with each other.

To further evaluate these discrepancies between reference and ET_{EC}, we calculated the cumulative difference between the 3 reference ET equations and ET_{EC} during the mid-period (Fig. 6). ET_{PT} was the only equation with near zero cumulative difference for a substantial amount of the mid-period for both fields; ET₀ was near 0 for the Lee field from October 2011 – February 2012 but not for the Windy field. Over the mid-period in Windy, the difference between cumulative ET_{EC} and ET_{PT} ranged from -40 mm in March 2012 to 92 mm at the end of the study period (August 2012) with cumulative differences of < 40 mm until July 2012. In Lee, the differences were greater, varying between -33 and 161 mm. The difference with ET₀ ranged from 0 (at beginning of mid-period) to 362 mm and 195 mm in Windy and Lee, respectively. ET_r showed the greatest cumulative differences of 854 and 443 mm in Windy and Lee.

3.4 Bulk canopy resistances at EC towers, soil observations, and patterns in ET discrepancies

To examine the discrepancies between the ASCE equations (ET₀ and ET_r), the Priestley-Taylor equation (ET_{PT}), and measured ET_{EC}, we inverted the Penman-Monteith (PM) equation to calculate bulk canopy resistance (r_c) from ET_{EC} and ET_{PT} and compared the calculated r_c to the constant r_c used to calculate ET₀ and ET_r during the mid-period. The ASCE

Formatted: Not Superscript/ Subscript

1 parameterization to calculate atmospheric resistance (r_a) was used in the inverted PM
2 equation. Days with Available Energy (net radiation (R_n) - ground heat flux (G)) of $< 5 \text{ MJ}$
3 day^{-1} were excluded because low radiation values would result in extreme r_c values and to
4 avoid including days with precipitation, which would bias the net radiation measurement of
5 the NR-Lite2. r_c varied considerably between Windy and Lee for ET_{EC} . For the mid-period,
6 mean (standard deviation) of daily r_c at Lee and Windy were $201 (47) \text{ s m}^{-1}$ and $145 (36) \text{ s m}^{-1}$,
7 respectively (Fig. 7). With respect to ET_{PT} , mean (standard deviation (STD)) of daily r_c at
8 Lee and Windy during the mid-period were $146 (28) \text{ s m}^{-1}$ and $175 (42) \text{ s m}^{-1}$, respectively
9 (Fig. 8). In all cases, mean r_c values were significantly higher ($>75 \text{ s m}^{-1}$) than the daily r_c
10 values used to parameterize the ET_0 and ET_r equations.

11 We calculated daytime and nighttime r_c to see if there was a systematic time of day difference
12 between the fields and to examine if errors in daytime or nighttime parameterized r_c were
13 disproportionally contributing to discrepancies in reference ET. Daily daytime and nighttime
14 r_c were calculated for days that had at least 8 (daytime) and 4 (nighttime) non-gap filled half
15 hourly flux measurements. For these calculations, daytime was defined as $R_n > 50 \text{ W m}^{-2}$ and
16 nighttime as $R_n < -10 \text{ W m}^{-2}$. We used this definition to avoid including periods with near zero
17 R_n that would blow up the inverted PM equation. Daily daytime and nighttime r_c are shown in
18 Fig. 9. Nighttime r_c shows greater difference between towers, with mean (standard deviation)
19 in Windy and Lee of $675 \text{ s m}^{-1} (289 \text{ s m}^{-1})$ and $808 \text{ s m}^{-1} (445 \text{ s m}^{-1})$ and substantially larger
20 absolute and relative standard deviation in r_c . For both fields, daytime and nighttime r_c was
21 larger than the ASCE r_c parameterizations for almost all days. One other notable feature of the
22 resistance terms was the low atmospheric resistance (r_a); in Windy and Lee, mean daily r_a was
23 17.7 and 38.6 s m^{-1} , respectively, over the study period.

24 We evaluated the correlation between meteorological observations and discrepancies between
25 the ASCE tall reference ET equation (ET_r) and ET_{EC} to assess the importance of the advective
26 and radiation terms in the PM equation. The only parameter that was highly correlated to ET
27 discrepancy ($ET_r - ET_{EC}$) was Vapor Pressure Deficit (VPD) with a coefficient of determination
28 (r^2) of 0.66 (Fig. 10a). VPD showed a much stronger correlation with ET discrepancy than
29 ET_{EC} ($r^2=0.19$) (Fig. 10b). Available Energy was moderately correlated with ET discrepancy
30 ($r^2=0.37$) while all other tested parameters (daily minimum, mean and maximum wind speed
31 and temperature) had weak or no correlation with ET discrepancy ($r^2 < 0.1$).

32 3.5 Corrections to better parameterize sugarcane water use

We attempted two corrections to the ASCE reference ET approach to better parameterize sugarcane water use. One was a climatological correction to the ET coefficient (K_{C-adj}). Following the FAO-56 approach (Allen et al., 1998), an adjustment term (K_{adj}) was calculated

$$K_{adj} = 0.04 * (U_{2avg} - 2) - 0.004 * (RH_{avg} - 45) * h_{avg}^{0.3}, \quad (4)$$

$$K_{C-adj} = K_{C-FAO} + K_{adj}, \quad (5)$$

In equations 4 and 5, K_{C-FAO} is the literature mid canopy K_C value, U_{2avg} is mean location wind speed ($m\ s^{-1}$) at 2 m height, RH_{avg} is mean location relative humidity, and h_{avg} is average vegetation height. For our study we used average wind speed, relative humidity, and vegetation height over the mid-period to calculate these parameters in the absence of longer term climate data. The FAO-56 provides a range of mid-period K_C values for sugarcane (1.25-1.40) for short reference ET. For adjustment, we chose the lowest end of the range (1.25) for K_{C-FAO} to enable the most conservative estimate of parameterized ET. The climatological K_C adjustment (K_{adj}) had relatively little impact on calculated water use. In the Windy field, K_{adj} was -0.0126 and in Lee K_{adj} was -0.0359. For both fields, the wind adjustment offset the relative humidity/vegetation height adjustment as all 3 parameters were greater than zero. The magnitude of the K_{adj} term was insufficient to account for the observed discrepancies between reference ET and ET_{EC} .

The second correction was to parameterize the ASCE-PM equation with a custom, constant, r_c . To estimate a r_c value, an intermediate bulk canopy resistance of $165\ s\ m^{-1}$ was used, which was chosen as the weighted average of the r_c calculated by inverting the ET_{PT} at Windy and Lee. We then ran the full form PM equation to calculate a new reference ET (ET_{r-cane}). Cumulative differences between ET_{r-cane} and ET_{EC} are shown in Fig. 11 along with the differences between ET_{PT} and ET_{EC} . ET_{r-cane} showed some improvements over ET_{PT} in predicting measured ET between Oct 2011 – March 2012; in particular ET_{r-cane} had less underestimation of ET (15 to 27 mm improvement) in winter and spring for both fields and had consistently better performance in the Lee field. ET_{r-cane} had worse performance than ET_{PT} during the summer in the Windy field (40 mm). The minimum cumulative difference between ET_{r-cane} and ET_{EC} was -12 mm and -18 mm in Windy and Lee, respectively. The maximum cumulative difference between ET_{r-cane} and ET_{EC} was 132 and 164 mm at the end of the study period in Windy and Lee, respectively.

4. Discussion

4.1 Is Hawaiian sugarcane representative of a fully-transpiring reference ET surface?

Well-watered-irrigated, full canopy, sugarcane has generally been reported to have an ET rate 1.1 to 1.4 times the ASCE/FAO-56 reference ET_0 equation (da Silva et al., 2012; Inman-Bamber and McGlinchey, 2003), and rain-fed sugarcane has been reported to have an ET rate approaching ET_0 (Cabral et al., 2012). Furthermore, a reference PM ET equation designed specifically for sugarcane created by McGlinchey and Inman-Bamber (1996) has a bulk canopy resistance that is slightly lower than the daily ASCE ET_r equation (40 s m^{-1} vs. 45 s m^{-1} for ASCE ET_r). Therefore, the significant overestimation of measured ET (ET_{EC}) by the ET_0 and ET_r equations found in this study was quite surprising. Although Windy and Lee fields had slight differences in planting dates, available soil water capacity, and fetch (Table 1), we do not believe these account for the observed ET/reference ET differences between the fields. Seasonal variation in temperature in Hawaii is quite small, wind speeds appeared to be uncorrelated to seasonality, and flux footprints during turbulent periods were well within the fetch in both fields. Wind fields in Central Maui are generally very strong, and our separate calculations of reference ET using independent farm weather station observations (Supplemental S1) and publicly available airport weather data from Kahului airport (<http://mesonet.agron.iastate.edu/request/download.phtml?network=HI> ASOS – station ID PHOG) show higher than typical values of reference ET for a tropical region.

The quality of Eddy Covariance observations was good, especially at the Windy tower where high turbulence, flux footprints that were well within field boundaries, low proportion of time periods requiring gap-filling, and excellent energy budget closure ($H+LE$ was $>95\%$ of daily $Rn-G$) indicated that the methodological requirements of the Eddy Covariance method were well satisfied (Anderson and Wang, 2014). At the Lee tower, Eddy Covariance measurements showed a more typical pattern with a larger number of gaps during still nighttime periods when ET is low. Furthermore, seasonal and annual totals of ET have been shown to be relatively insensitive to gap-filling methodologies (Alavi et al., 2006). Finally, while the gap filling method of Reichstein et al., (2005) may systematically underestimate wet canopy evaporation due to exclusion of all EC periods during and immediately after rain, this bias is likely to be insignificant at our sites due to the low precipitation (Table 2) and drip irrigation that would minimize wetting of the leaves.

One hypothesis is that portions of the fields measured by our Eddy Covariance towers were under significant water stress or had less than optimal cover, and thus were not representative of a reference ET type surface. Uniformity of irrigation is a major concern with drip irrigation, particularly with sub and near surface drip lines where root development can plug or pinch drip lines, leading to insufficient irrigation (e.g. Soopramanien et al., 1990). At our field with higher ET (Windy), visible dry lines arising from pinched drip tubes appeared in parts of the field at and after the end of the study period. However, there are multiple independent lines of evidence against this hypothesis.

With respect to canopy cover, the TetraCam observations of cover (Fig. 2) show that fractional cover remained above 80%, a threshold for the mid-period K_C (Carr and Knox, 2011; Inman-Bamber and McGlinchey, 2003). More evidence for full canopy comes from the leaf area index (LAI) measurements made in July 2012 toward the end of the mid-period. In both Lee and Windy, mean LAI (4.7 and 4.9) were slightly higher than the LAI (4.5) parameterized in the ET_r equation (Allen et al., 2005). These two types of data indicate that incomplete cover is not an issue with our study sites.

Another possibility is that the sugarcane leaves are under significant water stress and thus are transpiring at a lower rate. Four factors show that the sugarcane is unlikely to be water stressed. First, porometer measurements from the July 2012 campaign of midday, sunlit, leaf stomatal resistance were not significantly $>100 \text{ s m}^{-1}$. The 100 s m^{-1} comes from the mean leaf level stomatal resistance of a sunlit leaf on a well-watered plant as measured by Szeicz and Long (1969) and which is used as a basis for scaling bulk canopy resistance in the ASCE and FAO-56 approaches (Allen et al., 1998; 2005). Second, we compared the daily observed ET coefficient (K_C) from the day immediately preceding a substantial irrigation or rain event (defined as $>8 \text{ mm day}^{-1}$) during the mid-period with daily K_C 2 and 3 days after the irrigation event using a paired t-test ($n=106$ in Windy and $n=98$ in Lee). We reasoned that stressed full canopy sugarcane would respond to irrigation within 3 days, but that 3 days were short enough to avoid confounding changes due to variations in field water budgets. Neither field showed significantly greater daily ET_{EC} following an irrigation during the mid-period ($p>0.40$ for all tests). Third, the soil volumetric water content (VWC) data from the Windy field indicate relatively high soil moisture content; available soil water underneath the cane row [in the middle of the root zone](#) always remained at $>50\%$ of available capacity. Windy's soils were also near field capacity (and far above permanent wilting point) based on matric

1 potential at typical maximum and minimum soil VWC (Table 1). The VWC content also
2 argues against severe water stress that might persist after irrigation relieves the soil moisture
3 deficit; thus if the ASCE reference ET equations and coefficients were applicable to this
4 situation, we should see at least some days with ET_{EC} in the range of ET_0 and ET_r (6-10 mm
5 day⁻¹ in Windy) when soil moisture was near or above field capacity. Fourth, measured
6 irrigation plus precipitation as recorded by the plantation was compared to measured
7 cumulative ET_{EC} , with cumulative mid-period irrigation and precipitation exceeding ET_{EC} by
8 342 mm in Windy (Table 2). At all times in the Windy field, cumulative ET_{EC} was
9 significantly less than irrigation plus precipitation. ~~During the mid-period, cumulative~~
10 ~~irrigation and precipitation exceeded ET_{EC} by >100 mm.~~ In Lee, by early January 2012,
11 cumulative precipitation and irrigation exceeded ET_{EC} ; by the end of the mid-period (July
12 2012), cumulative irrigation and precipitation exceeded cumulative ET_{EC} by ~~>100~~500 mm-
13 (Table 2). In summary, the evidence of full canopy and the lack of evidence of water stress
14 indicated that the mid-period sugarcane at our study fields should be fully transpiring.

15 **4.2 Why do the standardized ASCE reference ET equations differ between** 16 **similar sites?**

17 Without clear evidence of water stress or lack of canopy cover over the study sites, we
18 examine some explanations for the overestimation of the ASCE ET_0 and ET_r compared to
19 ET_{EC} and ET_{PT} . Four hypotheses include (1) scaling of leaf level stomatal resistance to whole
20 canopy bulk resistance, (2) incorrect parameterization of daytime leaf level resistance, (3)
21 underestimation of nighttime bulk canopy resistance, and (4) underestimation of atmospheric
22 resistance. Scaling up leaf level resistance measurements has long been recognized as a major
23 challenge (Bailey and Davies, 1981; Furon et al., 2007; Sprintsin et al., 2012) due to
24 heterogeneity of environmental variables. The ASCE/FAO reference ET methods take a
25 single layer “big leaf” approach to scaling to convert non-stressed leaf resistances (r_s) into
26 whole canopy bulk resistances (r_c) by using an “effective LAI” where r_c is calculated by
27 dividing r_s by effective LAI. ASCE assumes that effective LAI is equivalent to 0.5 times
28 measured LAI, which is assumed to be 2.9 for ET_0 and 4.5 for ET_r thus resulting in effective
29 LAIs of 1.4 and 2.3, respectively. Studies of well watered crops have found effective LAIs
30 which vary quite significantly from those assumed for the reference surface. Tolck et al. (1996)
31 found an effective LAI of 1.3 for irrigated maize in Texas that was only 30% of maximum
32 measured LAI. Other studies (Alfieri et al., 2008; Mehrez et al., 1992) have assumed effective

1 LAI as a linear function of LAI, with effective LAI equaling 50% of LAI when LAI is 6.
2 Ultimately, the effective LAI concept is only a presumed distribution of leaves with differing
3 r_s (Bailey and Davies, 1981); there is a possibility that the relatively unique production system
4 in our study fields results in a different, distinctive leaf distribution with a lower effective
5 LAI. Along with effective LAI, another leaf parameter that could be different is leaf level
6 resistance (r_s). Although we did not find a highly significant difference between measured r_s
7 and the r_s assumed in the ASCE parameterizations (100 s m^{-1}), we were able to measure r_s in
8 only one field campaign during the mid-period, where r_s observations were limited by clouds
9 and other logistical limitations. A large number of r_s observations are needed to accurately
10 characterize r_c (Denmead, 1984); more than we could feasibly measure during our field
11 campaign. We also note that other researchers (e.g. Zhang et al., 2008) have found non-
12 stressed r_s values greater than 100 s m^{-1} .

13 Two other non-biological factors could help explain the discrepancy between ASCE reference
14 and mid-period ET_{EC} . One is nighttime r_c . Both ASCE approaches assume a nighttime r_c of
15 200 s m^{-1} , which is based on measurements of damp soil beneath a grass lysimeter (Allen et
16 al., 2006). Measured nighttime r_c at our fields was significantly higher. We suspect that the
17 taller sugarcane canopy and substantial layer of trash and lodged cane minimizes bare soil
18 water evaporation, thus increasing nighttime r_c . Oliver and Singels (2012) found significant
19 decrease in soil evaporation in sugarcane with surfaces covered by crop residue. Furthermore,
20 the minimal daytime ground heat flux (<5%) further reduces nighttime ET. Another factor is
21 canopy energy storage that is considerable in high biomass systems (Anderson and Wang,
22 2014). Finally, we note that nighttime r_c is likely to be a locally-specific value; 200 s m^{-1} is
23 too low for our study region, but it is too high for other regions with significant advection
24 (Evetts et al., 2012).

25 Along with nighttime r_c , we examined the role of atmospheric resistance (r_a) in parameterizing
26 ET, given the low observed mean r_a at Windy (< 20 s m^{-1}) and the demonstrated importance of
27 atmospheric resistance/conductance parameterizations in coastal tropical regions for accurate
28 ET parameterization (e.g. Holwerda et al., 2012). Given the canopy architecture of mid-period
29 sugarcane in our study fields, we were not certain about the equations that are commonly used
30 to parameterize zero plane displacement height and roughness lengths, which are also used in
31 the ASCE reference ET equations. To test the effect of r_a uncertainty, a sensitivity analysis
32 was conducted. We used r_a that was 200% and 50% of the original r_a and recalculated r_c for

both EC towers ~~and their adjacent weather stations.~~ In all cases, the new r_a changed the r_c values by $<10 \text{ s m}^{-1}$, with most r_c values changed by $<5 \text{ s m}^{-1}$. These values are too small to explain the discrepancy between observed and parameterized r_c . The presence of r_a in both the numerator and denominator of the PM equation limits the impact of variation in r_a on r_c .

Finally, we note that the ASCE and FAO reference ET equations show varying sensitivity to meteorological variables depending upon climate. Multiple studies have shown spatial, seasonal, and interannual variation in the sensitivity of reference ET to meteorological inputs, with the most sensitive input (air temperature, wind velocity, relative humidity, etc.) changing depending upon season and location (e.g. Bandyopadhyay et al., 2009; Estevez et al., 2009; Gong et al., 2006; Huo et al., 2013; Irmak et al., 2006; Liang et al., 2008; Liu et al., 2014). Irmak et al. (2006) and Estevez et al. (2009) found increased sensitivity to reference ET parameterization at locations with higher wind velocities in the United States and Spain, respectively. Bandyopadhyay et al. (2009) and Huo et al. (2013) reported that decreased wind velocities accounted for the largest proportion of decreased reference ET in climatically differing regions in India and China. Across a large river basin in China (Chiang Jiang), Gong et al. (2006) showed that sensitivities of reference ET to other meteorological variables (air temperature and relative humidity) depended significantly on the spatial pattern of wind sensitivity.

5 Summary and Conclusion

We investigated discrepancies between two standardized reference ET equations and Eddy Covariance measured ET at two field sites over irrigated sugarcane in Maui, Hawaii, USA. At both fields, measured daily ET during the mid-period should have approached the tall reference ET equation and exceeded the short reference ET equation. At both fields, both ASCE reference ET equations significantly overestimated mid-period ET compared to Eddy Covariance observations of ET. The Priestley-Taylor (PT) equation performed substantially better at the Windy field than the short reference ET, while the short reference ET equation and PT were more closely matched at the Lee field. We used a custom bulk canopy resistance derived from inverting PT ET; the custom cane reference ET equation had less seasonal variation in ET discrepancy. Multiple, independent, field observations did not indicate insufficient canopy cover or plant water stress reducing ET_{EC} significantly.

1 This study indicated nighttime bulk canopy resistance, leaf stomatal resistance, and effective
2 leaf area index as possible causes for the discrepancy in bulk canopy resistance (and reference
3 ET estimates) between the ASCE reference equations and mid-period ET_{EC} . The higher bulk
4 canopy resistances and relationship between ET discrepancies and vapor pressure deficit
5 indicated that the ASCE equations overestimated the advective component of ET. Ultimately,
6 validation with field methods, including micrometeorology and water balance methods, is
7 needed to establish the accuracy of the ASCE equations in a region where they have not been
8 tested previously. Adjusting the bulk canopy resistance to local climate to reduce the
9 advective component of ET may make the full ASCE Penman-Monteith equation a more
10 appropriate equation in this region.

11 The Priestley-Taylor (PT) equation performs better than ET_r or ET_0 in our study region. The
12 PT equation likely provides a more robust estimation of reference ET in regions with high
13 humidity. The simplicity of the PT equation also makes it attractive for use in larger scale
14 project planning as it has been parameterized in satellite-based ET models (e.g. Choi et al.,
15 2011; Jin et al., 2011) and can be used in regions with a relative paucity of surface
16 meteorological data, unlike the ASCE/FAO equations that require near surface wind speed
17 and humidity data that are currently supplied by surface meteorological stations and which are
18 interpolated in satellite-based approaches (Allen et al., 2007; Hart et al., 2009).

19 The results illustrate the importance of careful use of reference evapotranspiration equations
20 and coefficients for assessing actual evapotranspiration in hydrologic applications. Our
21 finding of high bulk canopy resistance and low atmospheric resistance supports Widmoser's
22 (2009) recommendation into research on the canopy resistance/atmospheric resistance ratio.
23 Many areas with changing hydrology (Elison Timm et al., 2011) and areas that currently and
24 which may soon use ~~supplemental~~-irrigation [in previously non-irrigated fields](#) (Baker et al.,
25 2012; Salazar et al., 2012) are outside of the semi-arid areas where reference
26 evapotranspiration methods have been primarily developed and tested. As such, it will be
27 important to ensure that the appropriate reference equation is used to parameterize evaporative
28 demand.

29

30 **Acknowledgements**

31 Don Schukraft discussed previous meteorological investigations and observations at the farm.
32 Jim Gartung, ARS-Parlier, assisted with the establishment of the EC tower and TetraCam

1 measurements. David Grantz provided insight on historical evaluation of ET data for
2 Hawaiian sugarcane. Adel Youkhana, Neil Abranyi, Jason Drogowski and the farm crew
3 assisted with data collection and field logistical support. This research was supported by
4 USDA-Agricultural Research Service, National Program 211: Water Availability and
5 Watershed Management and by the U.S. Navy, Office of Naval Research.

6

References

- Alavi, N., Warland, J. S. and Berg, A. A.: Filling gaps in evapotranspiration measurements for water budget studies: Evaluation of a Kalman filtering approach, *Agric. Forest Meteorol.*, 141(1), 57–66, doi:10.1016/j.agrformet.2006.09.011, 2006.
- Alfieri, J. G., Niyogi, D., Blanken, P. D., Chen, F., LeMone, M. A., Mitchell, K. E., Ek, M. B. and Kumar, A.: Estimation of the Minimum Canopy Resistance for Croplands and Grasslands Using Data from the 2002 International H2O Project, *Mon. Wea. Rev.*, 136(11), 4452–4469, doi:10.1175/2008MWR2524.1, 2008.
- Allen, R. G., Pereira, L. S., Raes, D. and Smith, M.: Crop evapotranspiration : guidelines for computing crop water requirements, Food and Agriculture Organization of the United Nations, Rome., 1998.
- Allen, R. G., Pruitt, W. O., Wright, J. L., Howell, T. A., Ventura, F., Snyder, R., Itenfisu, D., Steduto, P., Berengena, J., Yrisarry, J. B., Smith, M., Pereira, L. S., Raes, D., Perrier, A., Alves, I., Walter, I. and Elliott, R.: A recommendation on standardized surface resistance for hourly calculation of reference ETo by the FAO56 Penman-Monteith method, *Agric. Water Manage.*, 81(1-2), 1–22, doi:10.1016/j.agwat.2005.03.007, 2006.
- Allen, R. G., Walter, I.A., Elliott, R.L, Howell, T.A., Itenfisu, D., Jensen, M.E. and Snyder, R.L: The ASCE standardized reference evapotranspiration equation, American Society of Civil Engineers, Reston, Va., 2005.
- Anderson, R. G. and Gouliden, M. L.: A mobile platform to constrain regional estimates of evapotranspiration, *Agric. Forest Meteorol.*, 149(5), 771–782, doi:~~doi: DOI:~~ 10.1016/j.agrformet.2008.10.022, 2009.
- Anderson, R. G., Lo, M.-H. and Famiglietti, J. S.: Assessing surface water consumption using remotely-sensed groundwater, evapotranspiration, and precipitation, *Geophys. Res. Lett.*, 39(16), doi:10.1029/2012GL052400, 2012.
- Anderson, R. G. and Wang, D.: Energy budget closure observed in paired Eddy Covariance towers with increased and continuous daily turbulence, *Agric. Forest Meteorol.*, 184, 204–209, doi:10.1016/j.agrformet.2013.09.012, 2014.

- 1 Arnold, J. G., Srinivasan, R., Muttiah, R. S. and Williams, J. R.: Large Area Hydrologic
2 Modeling and Assessment Part I: Model Development, J. Am. Water Resources Assoc., 34(1),
3 73–89, doi:10.1111/j.1752-1688.1998.tb05961.x, 1998.
- 4 Arya, S. P.: Introduction to micrometeorology, Academic Press, San Diego., 2001.
- 5 Bailey, W. G. and Davies, J. A.: Bulk stomatal resistance control on evaporation, Boundary-
6 Lay. Meteorol., 20(4), 401–415, doi:10.1007/BF00122291, 1981.
- 7 Baker, J. M., Griffis, T. J. and Ochsner, T. E.: Coupling landscape water storage and
8 supplemental irrigation to increase productivity and improve environmental stewardship in the
9 U.S. Midwest, Water Resources Res., 48(5), W05301, doi:10.1029/2011WR011780, 2012.
- 10 Baldocchi, D. D.: Assessing the eddy covariance technique for evaluating carbon dioxide
11 exchange rates of ecosystems: past, present and future, Glob. Change Biol., 9(4), 479–492,
12 doi:10.1046/j.1365-2486.2003.00629.x, 2003.
- 13 [Ballester, C., Jiménez-Bello, M. A., Castel, J. R. and Intrigliolo, D. S.: Usefulness of](#)
14 [thermography for plant water stress detection in citrus and persimmon trees, Agric. Forest](#)
15 [Meteorol., 168, 120–129, doi:10.1016/j.agrformet.2012.08.005, 2013.](#)
- 16 Bandyopadhyay, A., Bhadra, A., Raghuwanshi, N. S. and Singh, R.: Temporal Trends in
17 Estimates of Reference Evapotranspiration over India, J. Hydrol. Eng., 14(5), 508–515,
18 doi:10.1061/(ASCE)HE.1943-5584.0000006, 2009.
- 19 Bastiaanssen, W. G. M., Noordman, E. J. M., Pelgrum, H., Davids, G., Thoreson, B. P. and
20 Allen, R. G.: SEBAL Model with Remotely Sensed Data to Improve Water-Resources
21 Management under Actual Field Conditions, J. Irrig. and Drain. Eng., 131(1), 85,
22 doi:10.1061/(ASCE)0733-9437(2005)131:1(85), 2005.
- 23 [Cabral, O. M. R., Rocha, H. R., Gash, J. H., Ligo, M. A. V., Tatsch, J. D., Freitas, H. C. and](#)
24 [Brasilio, E.: Water use in a sugarcane plantation, GCB Bioenergy, 4\(5\), 555–565,](#)
25 [doi:10.1111/j.1757-1707.2011.01155.x, 2012.](#)
- 26 Campbell, R., Chang, J.-H. and Cox, D.: Evapotranspiration of sugar cane in Hawaii as
27 measured by in-field lysimeters in relation to climate., pp. 637–645., 1960.
- 28 Carr, M. K. V. and Knox, J. W.: The Water Relations and Irrigation Requirements of Sugar
29 Cane (*Saccharum Officinarum*): A Review, Exp. Agric., 47(01), 1–25,
30 doi:10.1017/S0014479710000645, 2011.

1 Choi, M., Woong Kim, T. and Kustas, W. P.: Reliable estimation of evapotranspiration on
2 agricultural fields predicted by the Priestley–Taylor model using soil moisture data from
3 ground and remote sensing observations compared with the Common Land Model, *Int. J.*
4 *Remote Sens.*, 32(16), 4571–4587, doi:10.1080/01431161.2010.489065, 2011.

5 Cobos, D. R. and Baker, J. M.: Evaluation and Modification of a Domeless Net Radiometer,
6 *Agron. J.*, 95(1), 177–183, 2003.

7 Cristea, N. C., Kampf, S. K. and Burges, S. J.: Revised Coefficients for Priestley-Taylor and
8 Makkink-Hansen Equations for Estimating Daily Reference Evapotranspiration, *J. Hydrol.*
9 *Eng.*, 18(10), 1289–1300, doi:10.1061/(ASCE)HE.1943-5584.0000679, 2013.

10 Davis, S. L. and Dukes, M. D.: Irrigation scheduling performance by evapotranspiration-based
11 controllers, *Agric. Water Manage.*, 98(1), 19–28, doi:10.1016/j.agwat.2010.07.006, 2010.

12 Denmead, O. T.: Plant physiological methods for studying evapotranspiration: Problems of
13 telling the forest from the trees, *Agric. Water Manage.*, 8(1-3), 167–189, doi:10.1016/0378-
14 3774(84)90052-0, 1984.

15 Doorenbos, J. and Pruitt, W.: Crop water requirements. FAO irrigation and drainage paper 24,
16 Land and Water Development Division, FAO. Rome, 1977.

17 Eichinger, W. E., Parlange, M. B. and Stricker, H.: On the Concept of Equilibrium
18 Evaporation and the Value of the Priestley-Taylor Coefficient, *Water Resources Res.*, 32(1),
19 161, doi:10.1029/95WR02920, 1996.

20 Elison Timm, O., Diaz, H. F., Giambelluca, T. W. and Takahashi, M.: Projection of changes
21 in the frequency of heavy rain events over Hawaii based on leading Pacific climate modes, *J.*
22 *Geophys. Res.*, 116(D4), doi:10.1029/2010JD014923, 2011.

23 Estévez, J., Gavilán, P. and Berengena, J.: Sensitivity analysis of a Penman-Monteith type
24 equation to estimate reference evapotranspiration in southern Spain, *Hydrol. Process.*, 23(23),
25 3342–3353, doi:10.1002/hyp.7439, 2009.

26 Evett, S. R., Howell, T.A., Todd, R.W., Schneider, A.D. and Tolk, J.A.: Alfalfa reference ET
27 measurement and prediction, in National irrigation symposium. Proceedings of the 4th
28 Decennial Symposium, Phoenix, Arizona, USA, November 14-16, 2000., pp. 266–272,
29 American Society of Agricultural Engineers, St. Joseph Mich., 2000.

1 Evett, S.R., Lascano, R.J., Howell, T.A., Tolk, J.A., O'Shaughnessy, S.A. and Colaizzi, P.D.:
2 Single- and dual-surface iterative energy balance solutions for reference ET, *Trans. ASABE*,
3 55(2), 533–541, doi:10.13031/2013.41388, 2012.

4 Ferguson, I. M. and Maxwell, R. M.: Hydrologic and land–energy feedbacks of agricultural
5 water management practices, *Environ. Res. Lett.*, 6(1), 014006, doi:10.1088/1748-
6 9326/6/1/014006, 2011.

7 Fisher, J. B., DeBiase, T. A., Qi, Y., Xu, M. and Goldstein, A. H.: Evapotranspiration models
8 compared on a Sierra Nevada forest ecosystem, *Environ. Model. Soft.*, 20(6), 783–796,
9 doi:10.1016/j.envsoft.2004.04.009, 2005.

10 Furon, A. C., Warland, J. S. and Wagner-Riddle, C.: Analysis of Scaling-Up Resistances from
11 Leaf to Canopy Using Numerical Simulations, *Agron. J.*, 99(6), 1483,
12 doi:10.2134/agronj2006.0335, 2007.

13 Giambelluca, T. W., Chen, Q., Frazier, A. G., Price, J. P., Chen, Y.-L., Chu, P.-S., Eischeid, J.
14 K. and Delparte, D. M.: Online Rainfall Atlas of Hawai'i, *Bul. Am. Meteorolog. Soc.*, 94(3),
15 313–316, doi:10.1175/BAMS-D-11-00228.1, 2013.

16 Glaz, B., Reed, S. T. and Albano, J. P.: Sugarcane Response to Nitrogen Fertilization on a
17 Histosol with Shallow Water Table and Periodic Flooding, *J. Agron. Crop Sci.*, 194(5), 369–
18 379, doi:10.1111/j.1439-037X.2008.00329.x, 2008.

19 Gong, L., Xu, C., Chen, D., Halldin, S. and Chen, Y. D.: Sensitivity of the Penman–Monteith
20 reference evapotranspiration to key climatic variables in the Changjiang (Yangtze River)
21 basin, *J. Hydrol.*, 329(3–4), 620–629, doi:10.1016/j.jhydrol.2006.03.027, 2006.

22 Hargreaves, G. H. and Samani, Z. A.: Economic Considerations of Deficit Irrigation, *J. Irrig.*
23 *Drain. Eng.*, 110(4), 343, doi:10.1061/(ASCE)0733-9437(1984)110:4(343), 1984.

24 Hart, Q. J., Brugnach, M., Temesgen, B., Rueda, C., Ustin, S. L. and Frame, K.: Daily
25 reference evapotranspiration for California using satellite imagery and weather station
26 measurement interpolation, *Civil Eng. Environ. Systems*, 26(1), 19–33, 2009.

27 Heinz, D. J. and Osgood, R. V.: A History of the Experiment Station: Hawaiian Sugar
28 Planters' Association, *Hawaiian Planters' Record*, 61(3), 1–108, 2009.

- 1 Heinz, D. J., Tew, T. L., Meyer, H. K. and Wu, K. K.: Registration of H65-7052 Sugarcane
2 (Reg. No. 51), *Crop Sci.*, 21(4), 634, doi:10.2135/cropsci1981.0011183X002100040050x,
3 1981.
- 4 Hemakumara, H. ., Chandrapala, L. and Moene, A. F.: Evapotranspiration fluxes over mixed
5 vegetation areas measured from large aperture scintillometer, *Agric. Water Manage.*, 58(2),
6 109–122, doi:10.1016/S0378-3774(02)00131-2, 2003.
- 7 [Hirich, A., Choukr-Allah, R. and Jacobsen, S.-E.: Deficit Irrigation and Organic Compost](#)
8 [Improve Growth and Yield of Quinoa and Pea, *Journal of Agronomy and Crop Science*, 200,](#)
9 [390-398, doi:10.1111/jac.12073, 2014.](#)
- 10 Holwerda, F., Bruijnzeel, L. A., Barradas, V. L. and Cervantes, J.: The water and energy
11 exchange of a shaded coffee plantation in the lower montane cloud forest zone of central
12 Veracruz, Mexico, *Agric. Forest Meteorol.*, 173, 1–13, doi:10.1016/j.agrformet.2012.12.015,
13 2013.
- 14 Holwerda, F., Bruijnzeel, L. A., Scatena, F. N., Vugts, H. F. and Meesters, A. G. C. A.: Wet
15 canopy evaporation from a Puerto Rican lower montane rain forest: The importance of
16 realistically estimated aerodynamic conductance, *J. Hydrol.*, 414-415, 1–15,
17 doi:10.1016/j.jhydrol.2011.07.033, 2012.
- 18 Huo, Z., Dai, X., Feng, S., Kang, S. and Huang, G.: Effect of climate change on reference
19 evapotranspiration and aridity index in arid region of China, *J. Hydrol.*, 492, 24–34,
20 doi:10.1016/j.jhydrol.2013.04.011, 2013.
- 21 Inman-Bamber, N. G. and McGlinchey, M. G.: Crop coefficients and water-use estimates for
22 sugarcane based on long-term Bowen ratio energy balance measurements, *Field Crop Res.*,
23 83(2), 125–138, doi:10.1016/S0378-4290(03)00069-8, 2003.
- 24 Inman-Bamber, N. G., Robertson, M. J., Muchow, R. C., Wood, A. W., Pace, R. and
25 Spillman, M. F.: Boosting yields with limited irrigation water, *Proc. Aust. Soc. Sugar Cane*
26 *Techol.*, 21, 203–211, 1999.
- 27 Irmak, S., Payero, J. O., Martin, D. L., Irmak, A. and Howell, T. A.: Sensitivity Analyses and
28 Sensitivity Coefficients of Standardized Daily ASCE-Penman-Monteith Equation, *J. Irrig.*
29 *Drain. Eng.*, 132(6), 564–578, doi:10.1061/(ASCE)0733-9437(2006)132:6(564), 2006.

1 Jensen, M. E.: Water consumption by agricultural plants, in Water deficit and plant growth.
2 Vol. 1. Development, control and measurement., vol. II, pp. 1–22, New York, London:
3 Academic Press., 1968.

4 Jensen, M. E., Burman, R. D. and Allen, R. G.: Evapotranspiration and irrigation water
5 requirements: a manual, American Society of Civil Engineers, New York, N.Y., 1990.

6 Jin, Y., Randerson, J. T. and Goulden, M. L.: Continental-scale net radiation and
7 evapotranspiration estimated using MODIS satellite observations, *Remote Sens. Environ.*,
8 115(9), 2302–2319, doi:10.1016/j.rse.2011.04.031, 2011.

9 Kaimal, J. C. and Finnigan, J. J.: Atmospheric boundary layer flows: their structure and
10 measurement, Oxford University Press, USA., 1994.

11 Kang, S., Zhang, L., Liang, Y., Hu, X., Cai, H. and Gu, B.: Effects of limited irrigation on
12 yield and water use efficiency of winter wheat in the Loess Plateau of China, *Agric. Water*
13 *Manage.*, 55(3), 203–216, doi:10.1016/S0378-3774(01)00180-9, 2002.

14 Kljun, N., Calanca, P., Rotach, M. W. and Schmid, H. P.: A Simple Parameterisation for Flux
15 Footprint Predictions, *Boundary-Lay. Meteorol.*, 112(3), 503–523,
16 doi:10.1023/B:BOUN.0000030653.71031.96, 2004.

17 Kueppers, L. M., Snyder, M. A. and Sloan, L. C.: Irrigation cooling effect: Regional climate
18 forcing by land-use change, *Geophys. Res. Lett.*, 34(3), doi:10.1029/2006GL028679, 2007.

19 Lecina, S., Martínez-Cob, A., Pérez, P. J., Villalobos, F. J. and Baselga, J. J.: Fixed versus
20 variable bulk canopy resistance for reference evapotranspiration estimation using the
21 Penman–Monteith equation under semiarid conditions, *Agric. Water Manage.*, 60(3), 181–
22 198, doi:10.1016/S0378-3774(02)00174-9, 2003.

23 Leuning, R., van Gorsel, E., Massman, W. J. and Isaac, P. R.: Reflections on the surface
24 energy imbalance problem, *Agric. Forest Meteorol.*, 156, 65–74,
25 doi:10.1016/j.agrformet.2011.12.002, 2012.

26 Liang, L., Li, L., Zhang, L., Li, J. and Li, B.: Sensitivity of penman-monteith reference crop
27 evapotranspiration in Tao'er River Basin of northeastern China, *Chinese Geogr. Sci.*, 18(4),
28 340–347, doi:10.1007/s11769-008-0340-x, 2008.

- 1 Liu, H., Zhang, R. and Li, Y.: Sensitivity analysis of reference evapotranspiration (ET_o) to
2 climate change in Beijing, China, *Desal. Water Treat.*, 52(13-15), 2799–2804,
3 doi:10.1080/19443994.2013.862030, 2014.
- 4 Lo, M.-H. and Famiglietti, J. S.: Irrigation in California's Central Valley Strengthens the
5 Southwestern U. S. Water Cycle, *Geophys. Res. Lett.*, 6, 301-306 doi:10.1002/grl.50108,
6 2013.
- 7 Mauder, M. and Foken, T.: Documentation and Instruction Manual of the Eddy Covariance
8 Software Package TK2, Universitätsbibliothek Bayreuth, Bayreuth. [online] Available from:
9 <http://opus.ub.uni-bayreuth.de/volltexte/2011/800>, 2011.
- 10 [Mabhaudhi, T., Modi, A. T. and Beletse, Y. G.: Response of taro \(*Colocasia esculenta* L.
11 *Schott*\) landraces to varying water regimes under a rainshelter, *Agric. Water Manage.*, 121,
12 102–112, doi:10.1016/j.agwat.2013.01.009, 2013.](#)
- 13 McAneney, K. J. and Itier, B.: Operational limits to the Priestley-Taylor formula, *Irrig. Sci.*,
14 17(1), 37–43, doi:10.1007/s002710050020, 1996.
- 15 McGlinchey, M.G. and Inman-Bamber, N.G.: Predicting sugarcane water use with the
16 Penman–Monteith equation, in *Proceedings of the International Conference on*
17 *Evapotranspiration and Irrigation Scheduling*, San Antonio, pp. 592–598, ASAE, St.
18 Joseph Mich., 1996.
- 19 Mehrez, M. B., Taconet, O., Vidal-Madjar, D. and Valencogne, C.: Estimation of stomatal
20 resistance and canopy evaporation during the HAPEX-MOBILHY experiment, *Agric. Forest*
21 *Meteorol.*, 58(3-4), 285–313, doi:10.1016/0168-1923(92)90066-D, 1992.
- 22 Meissner, R., Rupp, H., Seeger, J., Ollesch, G. and Gee, G. W.: A comparison of water flux
23 measurements: passive wick-samplers versus drainage lysimeters, *Eur. J. Soil Sci.*, 61(4),
24 609–621, doi:10.1111/j.1365-2389.2010.01255.x, 2010.
- 25 [Mendez-Costabel, M. P., Wilkinson, K. L., Bastian, S. E. P., Jordans, C., McCarthy, M., Ford,
26 C. M. and Dokoozlian, N. K.: Effect of increased irrigation and additional nitrogen
27 fertilisation on the concentration of green aroma compounds in *Vitis vinifera* L. Merlot fruit
28 and wine: Green aroma compounds in Merlot, *Aust. J. Grape Wine Res.*, 20, 80–90,
29 doi:10.1111/ajgw.12062, 2014.](#)

1 Moncrieff, J. B., Massheder, J. M., de Bruin, H., Elbers, J., Friborg, T., Heusinkveld, B.,
2 Kabat, P., Scott, S., Soegaard, H. and Verhoef, A.: A system to measure surface fluxes of
3 momentum, sensible heat, water vapour and carbon dioxide, *J. Hydrol.*, 188–189, 589–611,
4 doi:10.1016/S0022-1694(96)03194-0, 1997.

5 Moncrieff, J., Clement, R., Finnigan, J. and Meyers, T.: Averaging, Detrending, and Filtering
6 of Eddy Covariance Time Series, in *Handbook of Micrometeorology*, vol. 29, edited by X.
7 Lee, W. Massman, and B. Law, pp. 7–31, Kluwer Academic Publishers, Dordrecht, 2004.

8 Monteith, J. L.: Evaporation and environment, *Symp. Soc. Exp. Biol.*, 19, 205–234, 1965.

9 Moore, R.C. and Fitschen, J.C.: The drip irrigation revolution in the Hawaiian sugarcane
10 industry, in *Visions of the future : proceedings of the 3. National Irrigation Symposium*, held
11 in conjunction with the 11. Annual International Irrigation Exposition, 1990, Phoenix Civic
12 Plaza, Phoenix, Arizona, ASAE, St. Joseph, Mich., 1990.

13 Obukhov, A. M.: Turbulence in an atmosphere with a non-uniform temperature, *Boundary-*
14 *Lay. Meteorol.*, 2(1), 7–29, doi:10.1007/BF00718085, 1971.

15 Olivier, F. and Singels, A.: The effect of crop residue layers on evapotranspiration, growth
16 and yield of irrigated sugarcane, *Water SA*, 38(1), doi:10.4314/wsa.v38i1.10, 2012.

17 Perry, C.: Irrigation reliability and the productivity of water: A proposed methodology using
18 evapotranspiration mapping, *Irrig. Drain. Systems*, 19(3-4), 211–221, doi:10.1007/s10795-
19 005-8135-z, 2005.

20 Priestley, C. H. B. and Taylor, R. J.: On the Assessment of Surface Heat Flux and
21 Evaporation Using Large-Scale Parameters, *Mon. Wea. Rev.*, 100(2), 81–92,
22 doi:10.1175/1520-0493(1972)100<0081:OTAOSH>2.3.CO;2, 1972.

23 Puma, M. J. and Cook, B. I.: Effects of irrigation on global climate during the 20th century, *J.*
24 *Geophys. Res.*, 115(D16), doi:10.1029/2010JD014122, 2010.

25 Ramjeawon, T.: Water resources management on the small Island of Mauritius, *Int. J. Water*
26 *Resour. D.*, 10(2), 143–155, doi:10.1080/07900629408722619, 1994.

27 Rao, L., Sun, G., Ford, C. and Vose, J.: Modeling potential evapotranspiration of two forested
28 watersheds in the southern Appalachians, *Trans. ASABE*, 54(6), 2067–2078,
29 doi:10.13031/2013.40666, 2011.

1 Reichstein, M., Falge, E., Baldocchi, D., Papale, D., Aubinet, M., Berbigier, P., Bernhofer, C.,
 2 Buchmann, N., Gilmanov, T., Granier, A., Grunwald, T., Havrankova, K., Ilvesniemi, H.,
 3 Janous, D., Knohl, A., Laurila, T., Lohila, A., Loustau, D., Matteucci, G., Meyers, T.,
 4 Miglietta, F., Ourcival, J.-M., Pumpanen, J., Rambal, S., Rotenberg, E., Sanz, M., Tenhunen,
 5 J., Seufert, G., Vaccari, F., Vesala, T., Yakir, D. and Valentini, R.: On the separation of net
 6 ecosystem exchange into assimilation and ecosystem respiration: review and improved
 7 algorithm, *Glob. Change Biol.*, 11(9), 1424–1439, doi:10.1111/j.1365-2486.2005.001002.x,
 8 2005.

9 Salazar, M. R., Hook, J. E., Garcia y Garcia, A., Paz, J. O., Chaves, B. and Hoogenboom, G.:
 10 Estimating irrigation water use for maize in the Southeastern USA: A modeling approach,
 11 *Agric. Water Manage.*, 107, 104–111, doi:10.1016/j.agwat.2012.01.015, 2012.

12 Salinas, F. and Namken, L. N.: Irrigation scheduling for sugarcane in the Lower Rio Grande
 13 Valley of Texas, *Proc. Am. Soc. Sugar Cane Technol.*, 6, 186–191, 1977.

14 Da Silva, T. G. F., de Moura, M. S. B., Zolnier, S., Soares, J. M., Vieira, V. J. S. and G. F.
 15 Júnior, W.: Water requirement and crop coefficient of irrigated sugarcane in a semi-arid
 16 region, *Revista Brasileira de Engenharia Agrícola e Ambiental*, 16(1), 64–71, 2012.

17 Smith, M.: The application of climatic data for planning and management of sustainable
 18 rainfed and irrigated crop production, *Agric. Forest Meteorol.*, 103(1-2), 99–108,
 19 doi:10.1016/S0168-1923(00)00121-0, 2000.

20 Soopramanien, G. C., Berthelot, B. and Batchelor, C. H.: Irrigation research, development and
 21 practice in Mauritius, *Agric. Water Manage.*, 17(1-3), 129–139, doi:10.1016/0378-
 22 3774(90)90060-C, 1990.

23 Sprintsin, M., Chen, J. M., Desai, A. and Gough, C. M.: Evaluation of leaf-to-canopy
 24 upscaling methodologies against carbon flux data in North America, *J. Geophys. Res.*,
 25 117(G1), doi:10.1029/2010JG001407, 2012.

26 Suleiman, A. A. and Hoogenboom, G.: Comparison of Priestley-Taylor and FAO-56 Penman-
 27 Monteith for Daily Reference Evapotranspiration Estimation in Georgia, *J. Irrig. Drain. Eng.*,
 28 133(2), 175–182, doi:10.1061/(ASCE)0733-9437(2007)133:2(175), 2007.

29 Suleiman, A. A. and Hoogenboom, G.: A comparison of ASCE and FAO-56 reference
 30 evapotranspiration for a 15-min time step in humid climate conditions, *J. Hydrol.*, 375(3-4),
 31 326–333, doi:10.1016/j.jhydrol.2009.06.020, 2009.

1 Szeicz, G. and Long, I. F.: Surface Resistance of Crop Canopies, *Water Resources Res.*, 5(3),
2 622, doi:10.1029/WR005i003p00622, 1969.

3 Tang, Q., Peterson, S., Cuenca, R. H., Hagimoto, Y. and Lettenmaier, D. P.: Satellite-based
4 near-real-time estimation of irrigated crop water consumption, *J. Geophys. Res.*, 114(D5),
5 doi:10.1029/2008JD010854, 2009.

6 Thompson, G. D. and Boyce, J. P.: Daily measurements of potential evapotranspiration from
7 fully canopied sugarcane, *Agric. Meteorol.*, 4(4), 267–279, doi:10.1016/0002-1571(67)90027-
8 1, 1967.

9 Tian, D. and Martinez, C. J.: Forecasting Reference Evapotranspiration Using Retrospective
10 Forecast Analogs in the Southeastern United States, *J. Hydrolmeteorol.*, 13(6), 1874–1892,
11 doi:10.1175/JHM-D-12-037.1, 2012.

12 Tolk, J.A., Howell, T.A., Steiner, J.L. and Krieg, D.R.: Corn canopy resistance determined
13 from whole plant transpiration, in *Proceedings of the International Conference on*
14 *Evapotranspiration and Irrigation Scheduling*, San Antonio, pp. 347–351, ASAE, St.
15 Joseph Mich., 1996.

16 Ventura, F., Spano, D., Duce, P. and Snyder, R. L.: An evaluation of common
17 evapotranspiration equations, *Irrig. Sci.*, 18(4), 163–170, doi:10.1007/s002710050058, 1999.

18 Vickers, D. and Mahrt, L.: Quality Control and Flux Sampling Problems for Tower and
19 Aircraft Data, *J. Atmos. Oceanic Technol.*, 14(3), 512–526, doi:10.1175/1520-
20 0426(1997)014<0512:QCAFSP>2.0.CO;2, 1997.

21 Vörösmarty, C. J., Federer, C. A. and Schloss, A. L.: Potential evaporation functions
22 compared on US watersheds: Possible implications for global-scale water balance and
23 terrestrial ecosystem modeling, *J. Hydrol.*, 207(3-4), 147–169, doi:10.1016/S0022-
24 1694(98)00109-7, 1998.

25 Waterloo, M. J., Bruijnzeel, L. A., Vugts, H. F. and Rawaqa, T. T.: Evaporation from *Pinus*
26 *caribaea* plantations on former grassland soils under maritime tropical conditions, *Water*
27 *Resources Res.*, 35(7), 2133–2144, doi:10.1029/1999WR900006, 1999.

28 Webb, E. K., Pearman, G. I. and Leuning, R.: Correction of flux measurements for density
29 effects due to heat and water vapour transfer, *Q. J. Roy. Meteorol. Soc.*, 106, 85–100,
30 doi:10.1002/qj.49710644707, 1980.

- 1 Widmoser, P.: A discussion on and alternative to the Penman–Monteith equation, *Agric.*
2 *Water Manage.*, 96(4), 711–721, doi:10.1016/j.agwat.2008.10.003, 2009.
- 3 Wright, J. L., Allen, Richard G. and Howell, T.A.: Conversion between evapotranspiration
4 references and methods, in National irrigation symposium. Proceedings of the 4th Decennial
5 Symposium, Phoenix, Arizona, USA, November 14-16, 2000., pp. 251–259, American
6 Society of Agricultural Engineers, St. Joseph Mich., 2000.
- 7 Zhang, B., Kang, S., Li, F. and Zhang, L.: Comparison of three evapotranspiration models to
8 Bowen ratio-energy balance method for a vineyard in an arid desert region of northwest
9 China, *Agric. Forest Meteorol.*, 148(10), 1629–1640, doi:10.1016/j.agrformet.2008.05.016,
10 2008.
- 11 Zhao, L., Xia, J., Xu, C., Wang, Z., Sobkowiak, L. and Long, C.: Evapotranspiration
12 estimation methods in hydrological models, *J. Geograp. Sci.*, 23(2), 359–369,
13 doi:10.1007/s11442-013-1015-9, 2013.

14

1 Table 1: Eddy Covariance field site information.

Micrometeorological site information		
Field	Lee	Windy
Latitude (°N)	20.784664	20.824633
Longitude (°W)	156.403869	156.491278
Elevation (m)	203	44
Date field planted	March 28, 2011	May 11, 2011
Date tower established	July 21, 2011	July 23, 2011
Begin of mid-period (cover >80%)	November 3, 2011	December 5, 2011
End of analysis	July 26, 2012	August 27, 2012
Natural Resource Conservation Service (NRCS) Soil Series	Waiakoa very stony, silty clay loam	Pulehu cobbly silt loam
Bulk Density ³ (g/cm ³)	1.22	1.35
Porosity (%)	54	49
Soil texture classification ⁴	Clay	Sandy clay loam
Soil texture - Sand (%)	31	51
Soil texture - Silt (%)	15	16
Soil texture - Clay (%)	54	33
Soil volumetric water content (VWC) at saturation (mm/40 cm depth)	216	196
Soil Water storage (Water content at 30% VWC-wilting point) (mm)	60	72
Wilting Point (% VWC)	15	12
Matric potential at 30% VWC (MPa)	NA ⁵	-0.01
Matric potential at 24% VWC (MPa)	NA	-0.033
Field Size (ha)	99.1	62.6
Field length (m) (predominant wind)	>500	415
Field length (m) (shortest direction)	220	150
Mean meteorological observations (August 1, 2011 – July 31, 2012)		
Mean daily air temperature (°C)	22.3	23.4
Mean minimum daily air temperature (°C)	17.8	20.4
Mean maximum daily air temperature (°C)	27.3	26.9
Mean daily wind speed (m s ⁻¹)	2.0	4.6
Mean daily net radiation (MJ m ⁻² day ⁻¹)	10.7	11.3
Mean daily relative humidity (%)	65	62

2

³ All reported soil properties averaged/summed over the first 40 cm of soil depth.

⁴ Soil texture was determined in the lab using the Hydrometer method.

⁵ Matric potential not available for Lee because of extreme logistical difficulty in obtaining intact Tempe Cell samples at depth for determination of water retention characteristics.

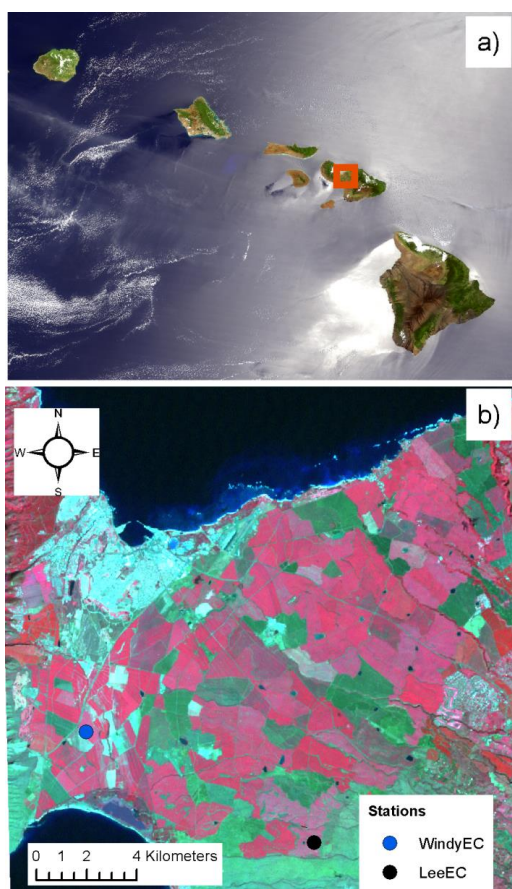


Table 2: A summary of cumulative irrigation, rain, actual measured evapotranspiration- ET_{EC} , and reference evapotranspiration values (ASCE short- ET_0 and tall- ET_r , Priestley-Taylor- ET_{PT} , and a custom cane reference $ET-ET_{r-cane}$) for the entire study period and the mid-period. All values are in mm.

	<u>Lee</u>		<u>Windy</u>	
	<u>Whole Study</u>	<u>Mid-Period</u>	<u>Whole Study</u>	<u>Mid-Period</u>
<u>Irrigation</u>	<u>1599</u>	<u>1348</u>	<u>1928</u>	<u>1221</u>
<u>Rain</u>	<u>58</u>	<u>58</u>	<u>140</u>	<u>122</u>
<u>ET_{EC}</u>	<u>1191</u>	<u>843</u>	<u>1389</u>	<u>1001</u>
<u>ET_0</u>	<u>1487</u>	<u>1042</u>	<u>2099</u>	<u>1367</u>
<u>ET_r</u>	<u>1828</u>	<u>1292</u>	<u>2861</u>	<u>1861</u>
<u>ET_{PT}</u>	<u>1470</u>	<u>1008</u>	<u>1707</u>	<u>1096</u>
<u>ET_{r-cane}</u>	<u>1317</u>	<u>947</u>	<u>1662</u>	<u>1128</u>

[Figure captions](#)

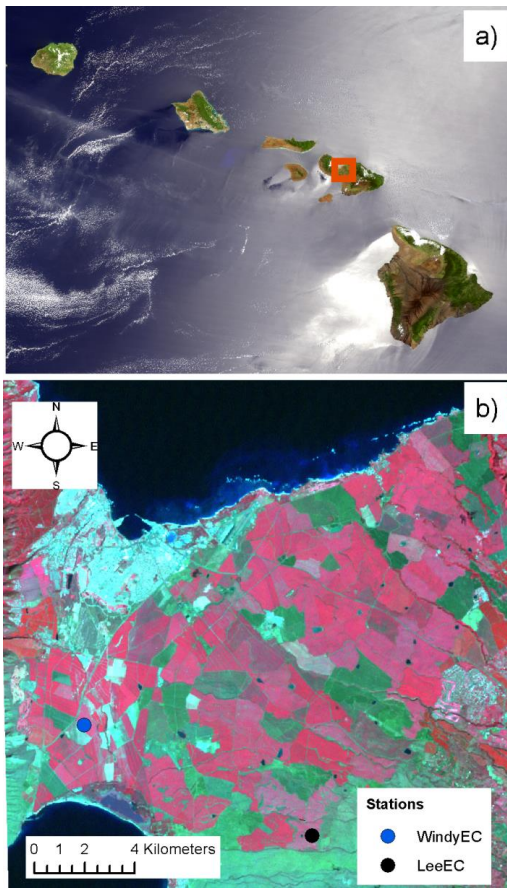
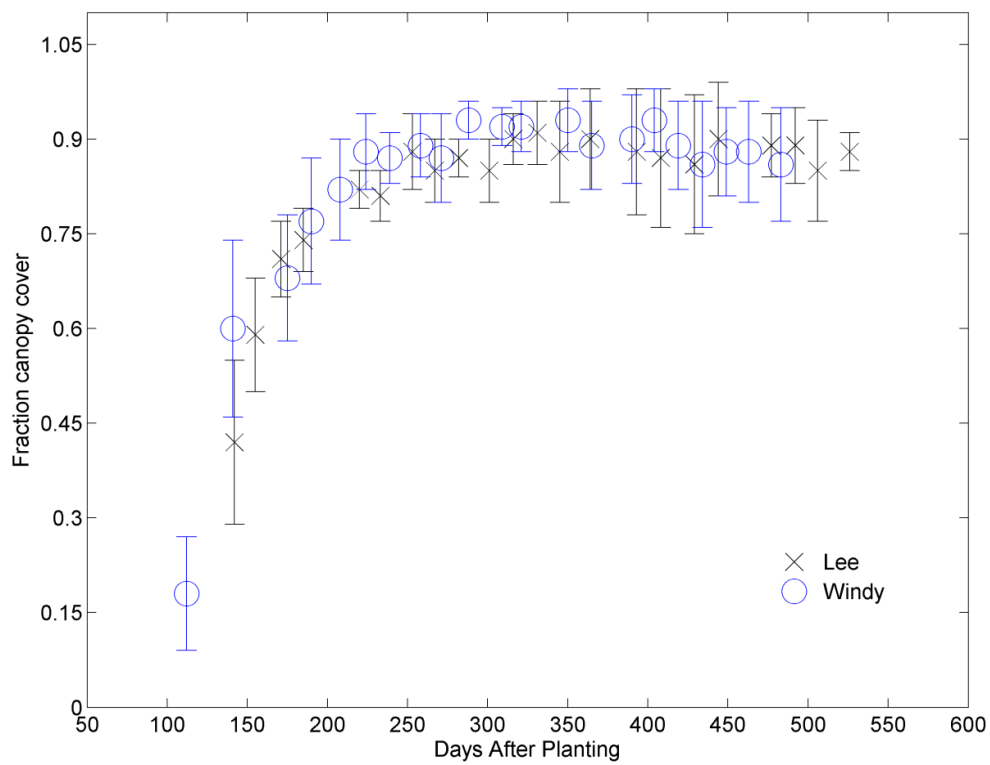


Figure 1: a) True color image of the main Hawaiian Islands from the MODerate resolution Imaging Spectroradiometer (250 m resolution – image date: May 27, 2003). Study region is outlined in red box. b) The Study Region on Central Maui showing the location of the Eddy Covariance (EC) towers (Windy and Lee) used in this study. Image is false color Landsat 7 (30 m resolution – image date: ~~February~~ February 5, 2000).



1
2

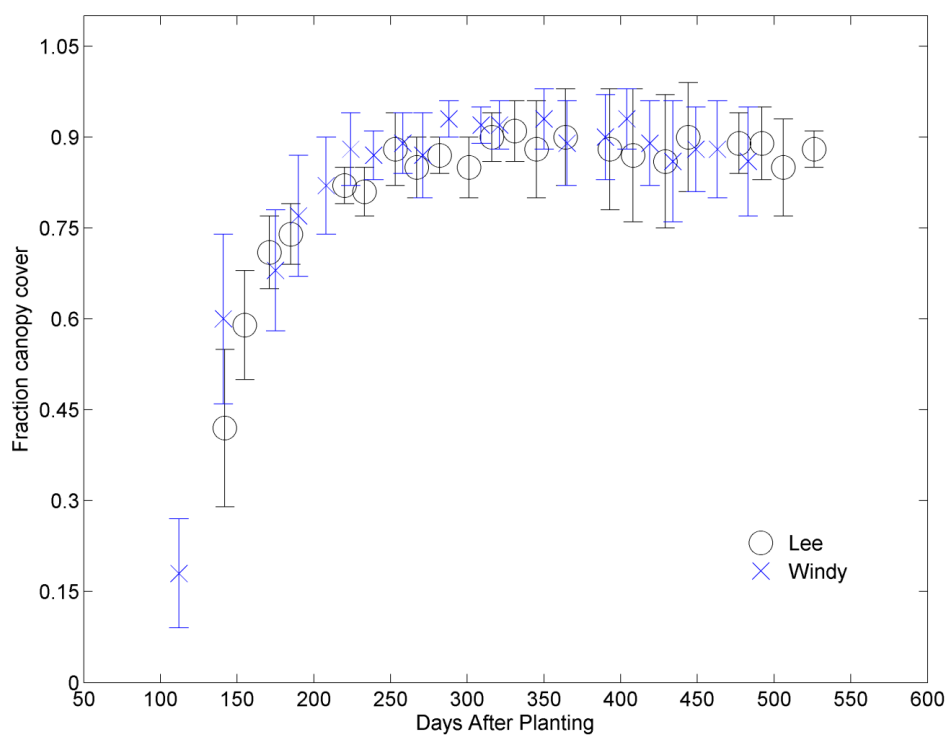
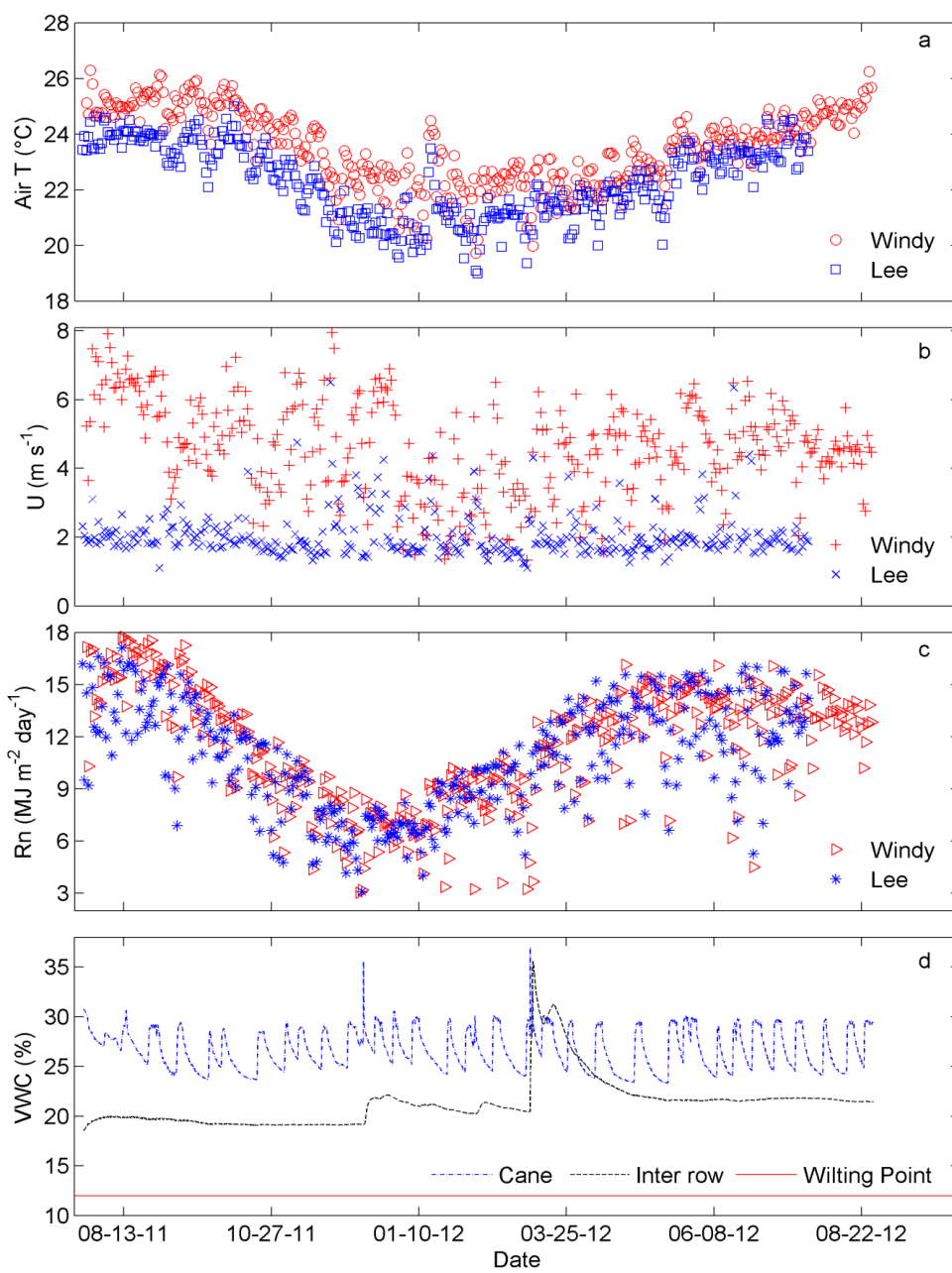


Figure 2: Measured mean and standard deviation of fractional vegetation cover from TetraCam for Windy and Lee fields.



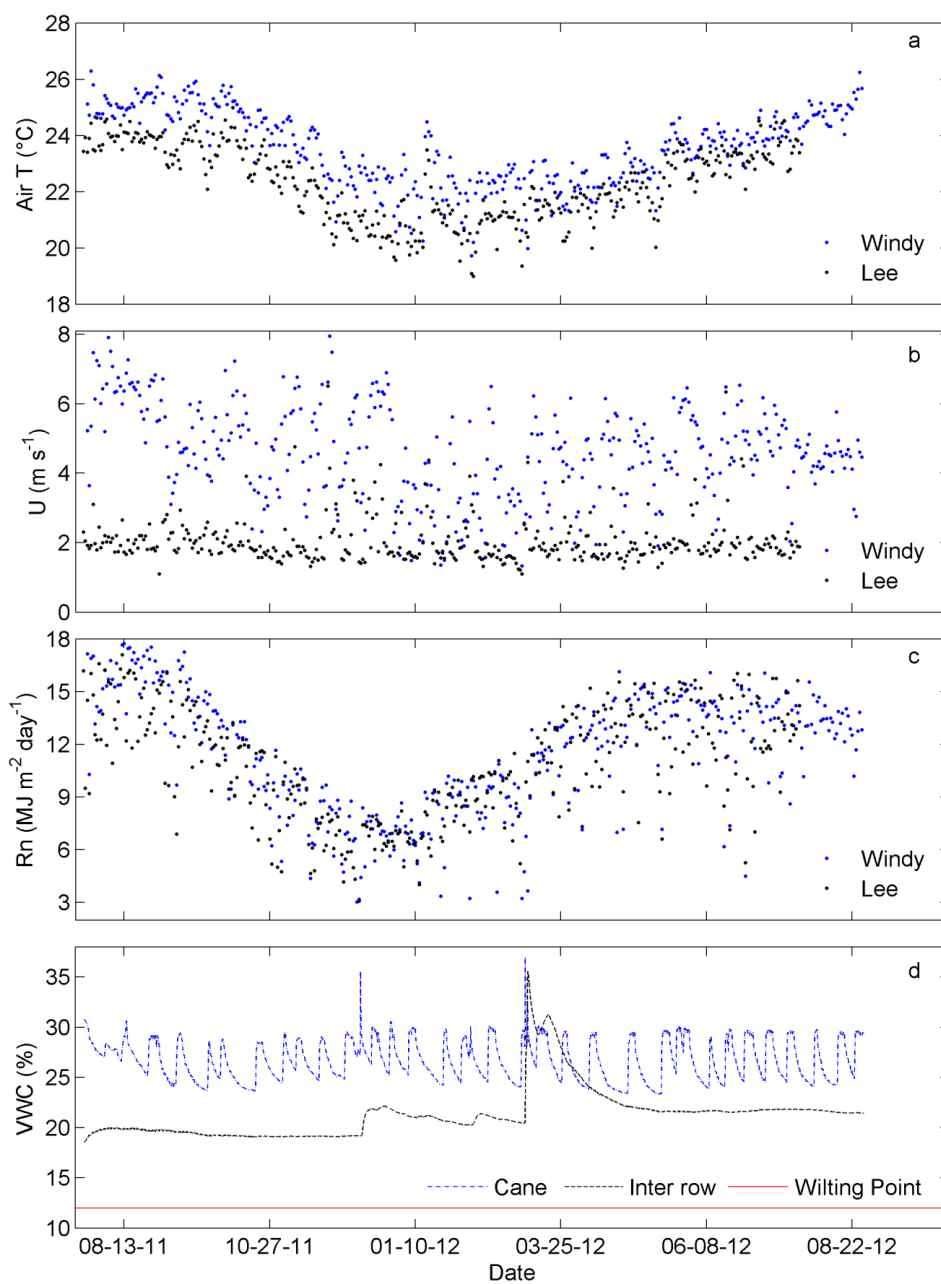
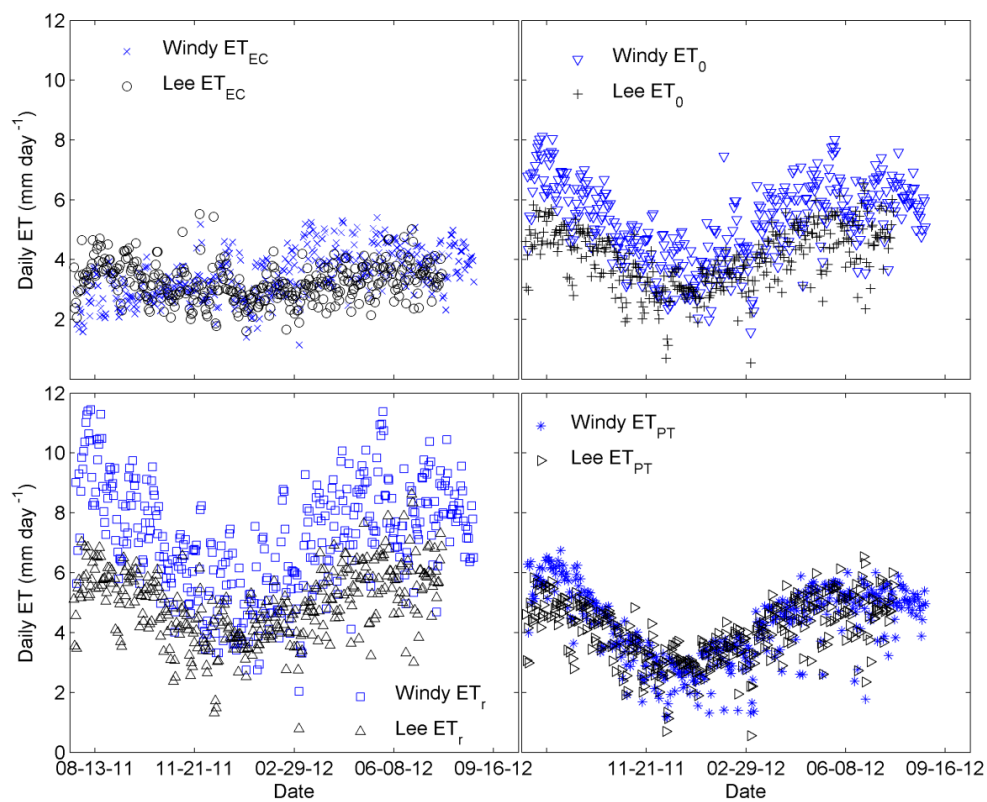


Figure 3: Meteorological and soil observations during the study period: a) Mean daily air temperature; b) mean 24 hour wind velocity; c) Cumulative daily net radiation; -and d) soil volumetric water content (VWC) data from Windy field at 20- cm depth underneath cane row

Formatted: Don't add space between paragraphs of the same style, Line spacing: lines

- 1 (45 cm away from drip line) and inter row or midway between drip lines (137 cm away from
- 2 drip line). Wilting point noted as solid red line (12% VWC).



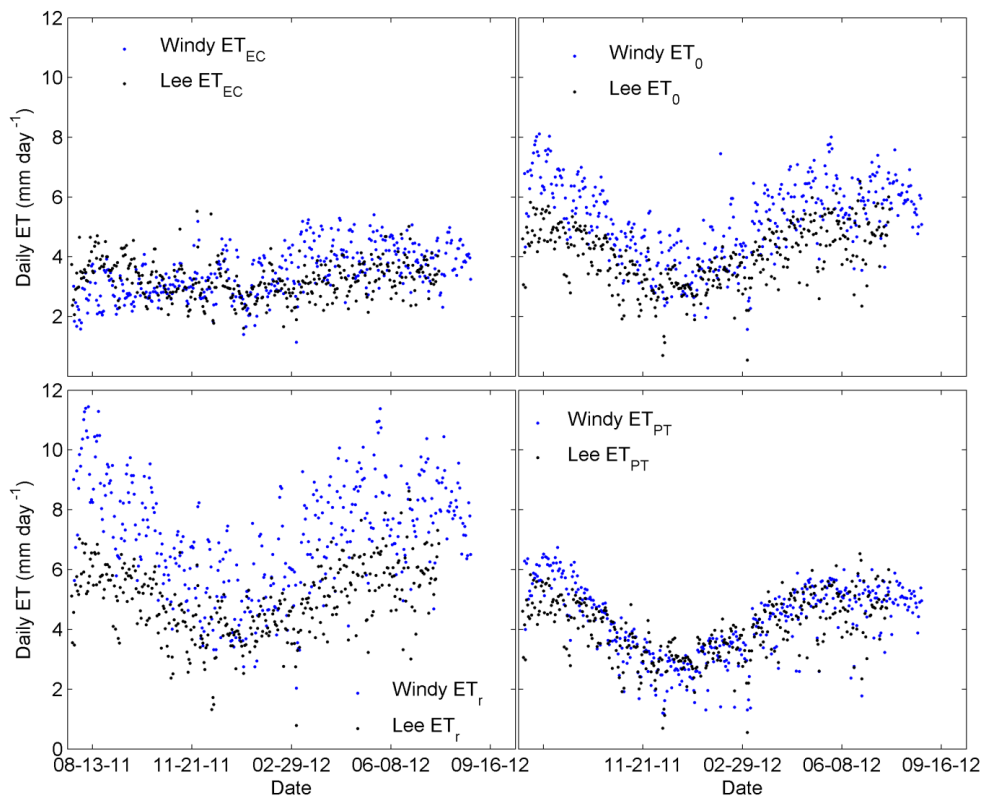
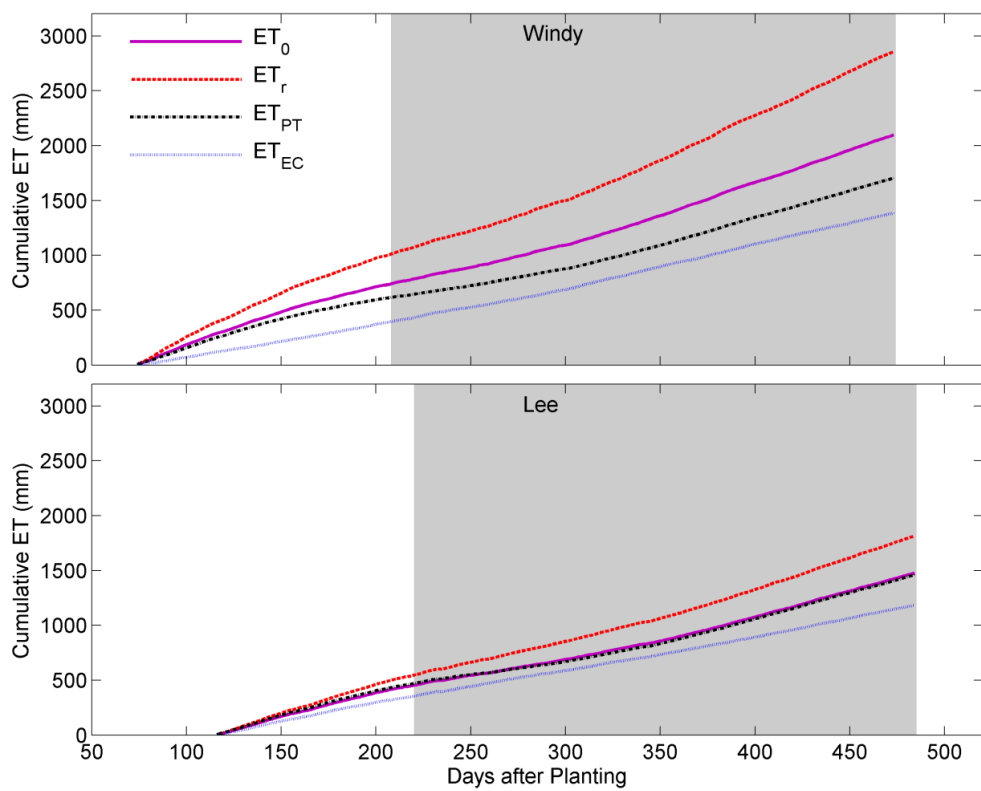


Figure 4: Daily measured and reference ETs for EC tower fields from tower establishment until the end of the study period for each field.



1
2

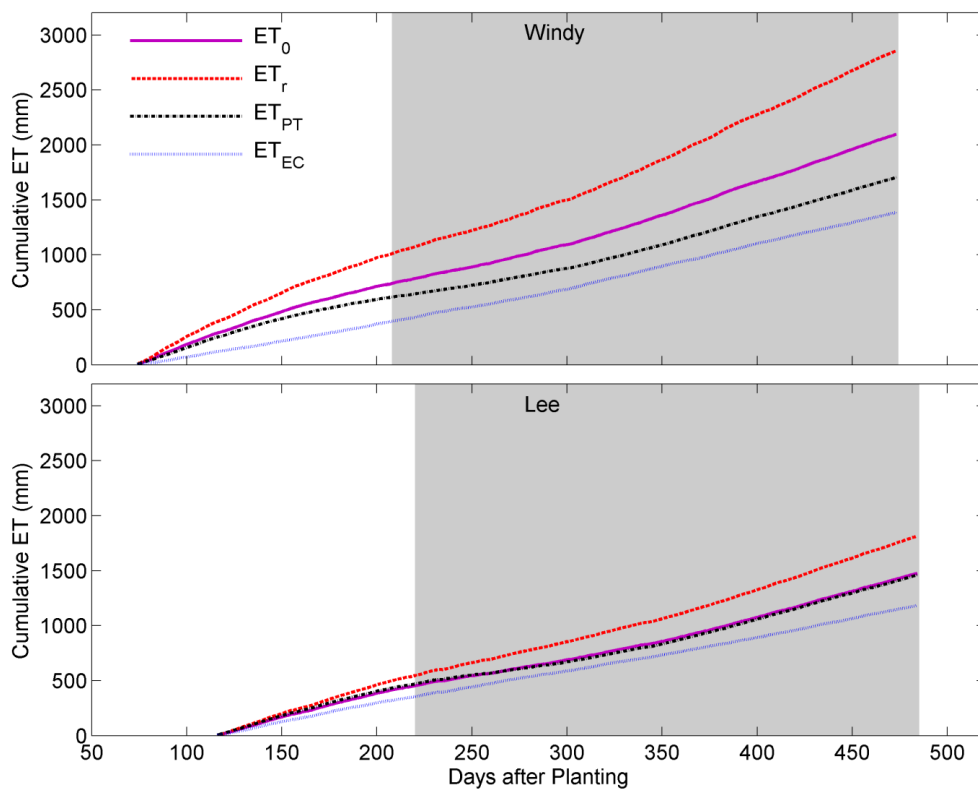
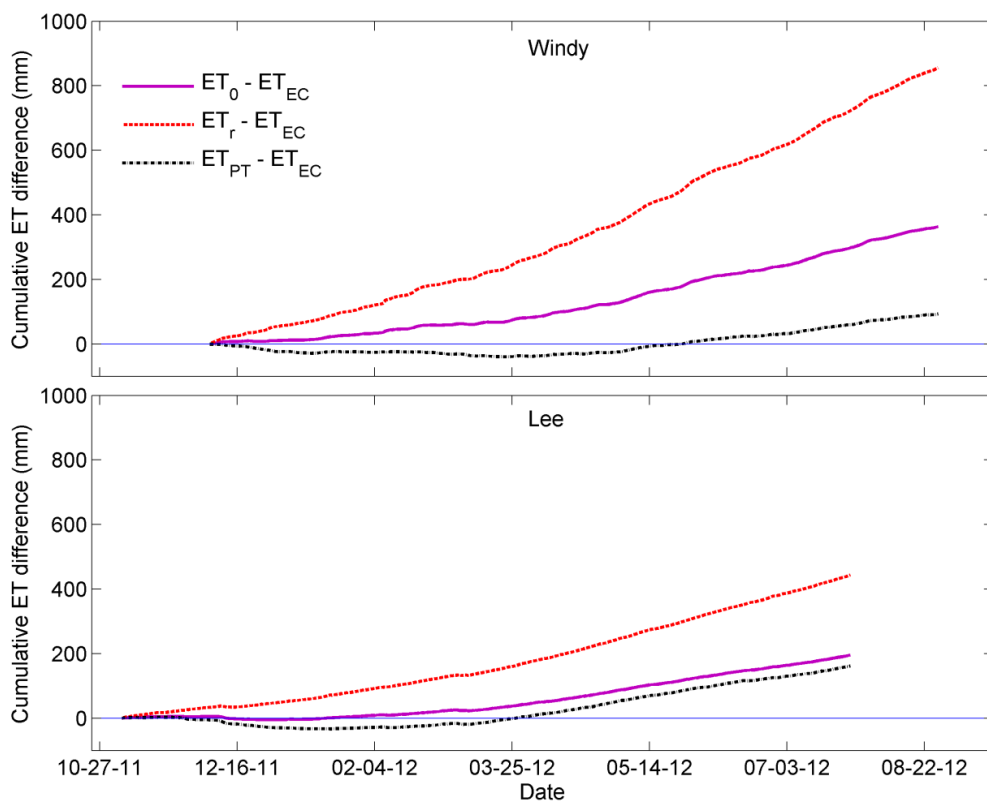


Figure 5: Cumulative measured and reference ET for Windy and Lee plotted against Days after Planting (DAP). Shaded background indicates mid-period when ground canopy cover > 80%.

Formatted: Space After: 10 pt, Hyphenate



1
2

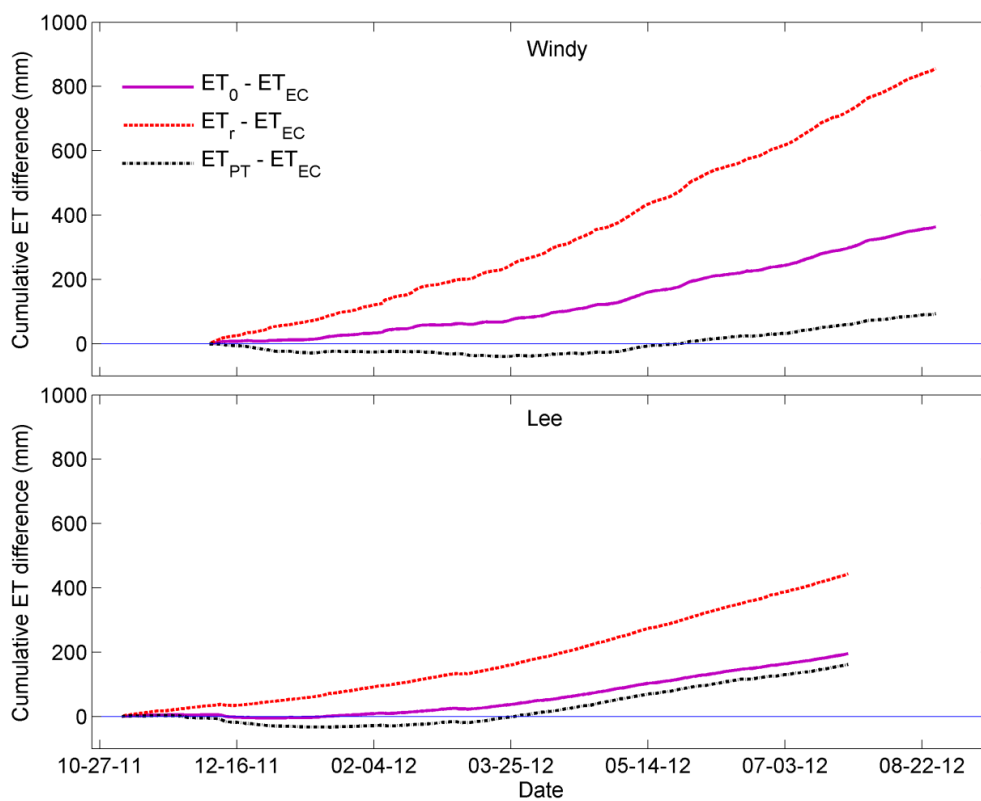
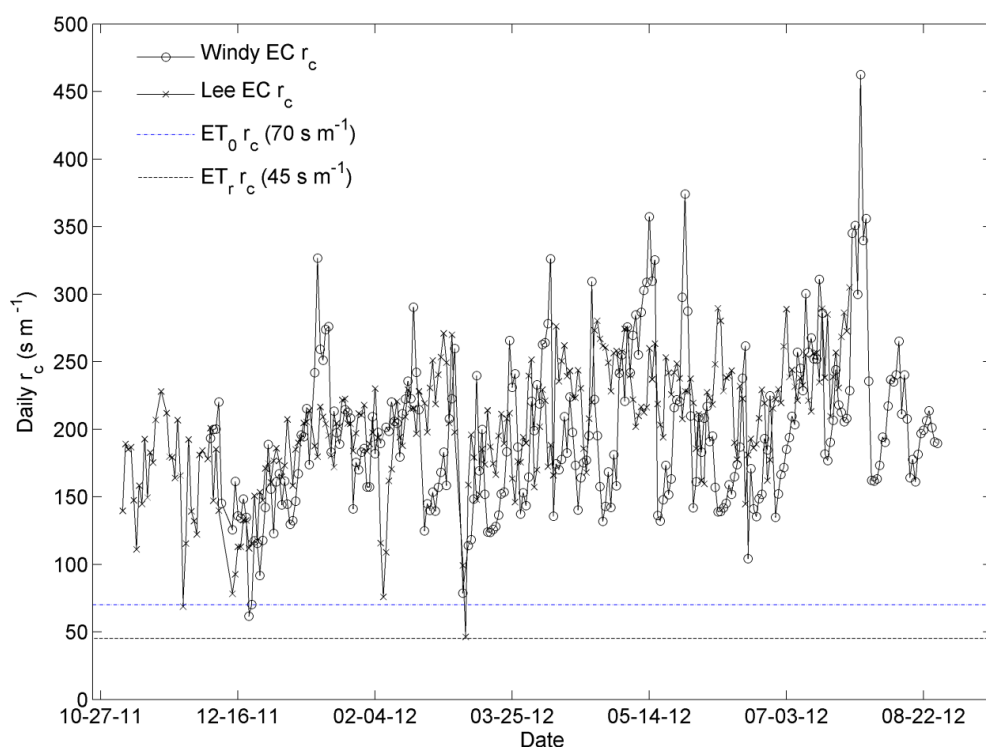


Figure 6: Cumulative difference between reference and measured ET since the beginning of the mid-period in each EC tower field.

Formatted: Space After: 10 pt, Hyphenate



1
2

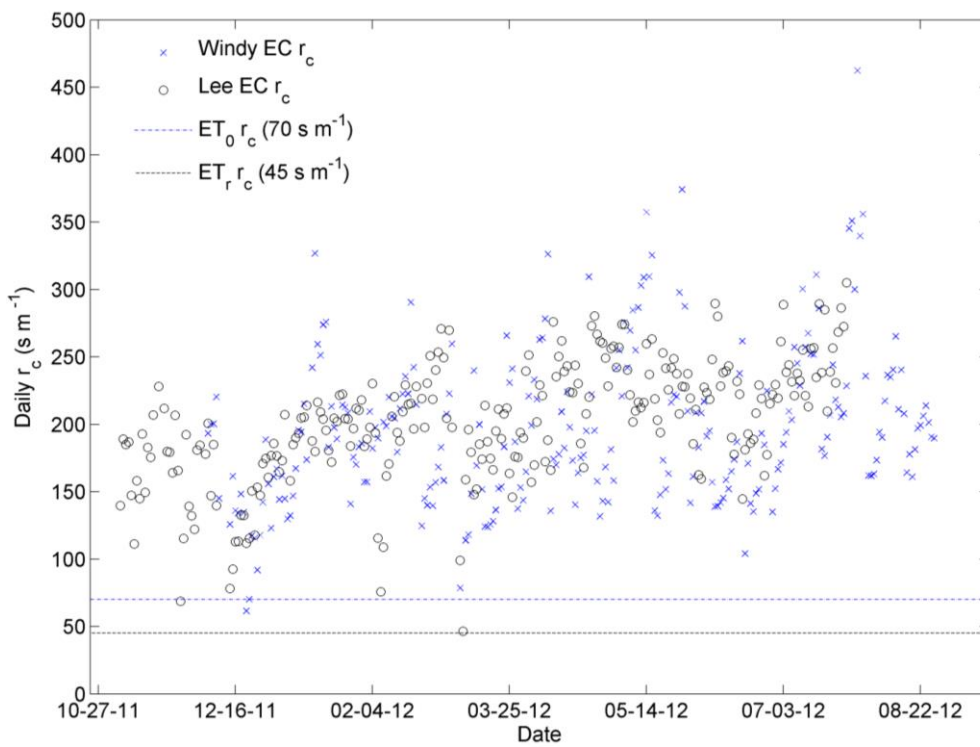
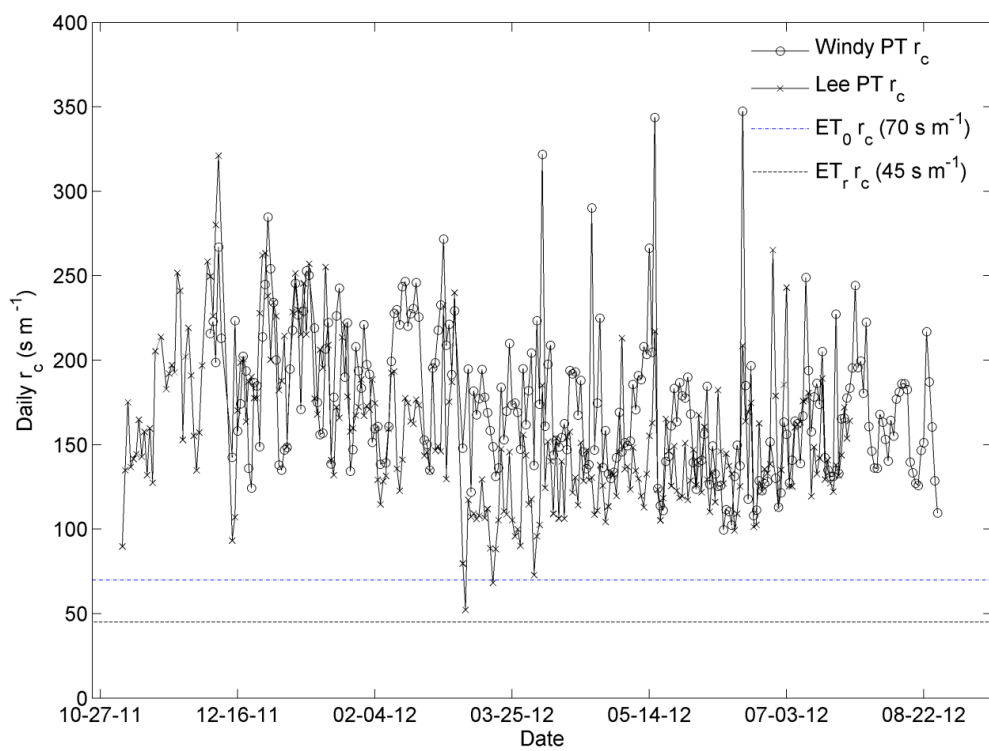


Figure 7: Calculated daily bulk canopy resistance at Windy and Lee from the EC towers for the mid-period. Dotted lines show daily time step resistances from short canopy ($ET_0 - 70 \text{ s m}^{-1}$) and tall canopy ($ET_r - 50 \text{ s m}^{-1}$) reference surfaces.

Formatted: Space After: 10 pt, Hyphenate



1
2

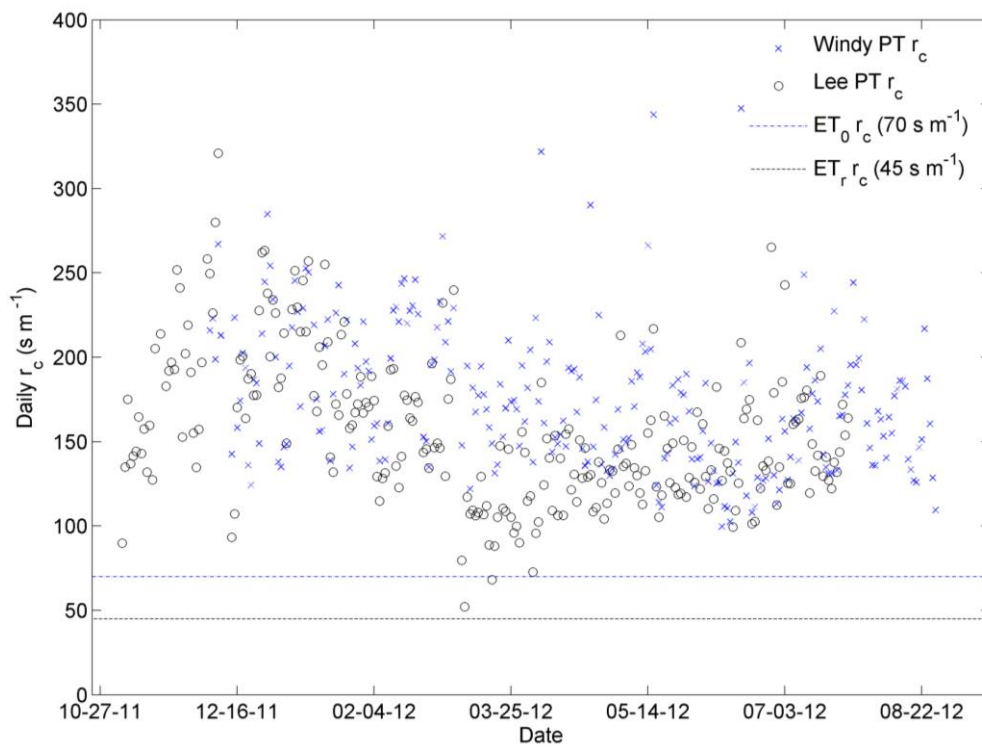
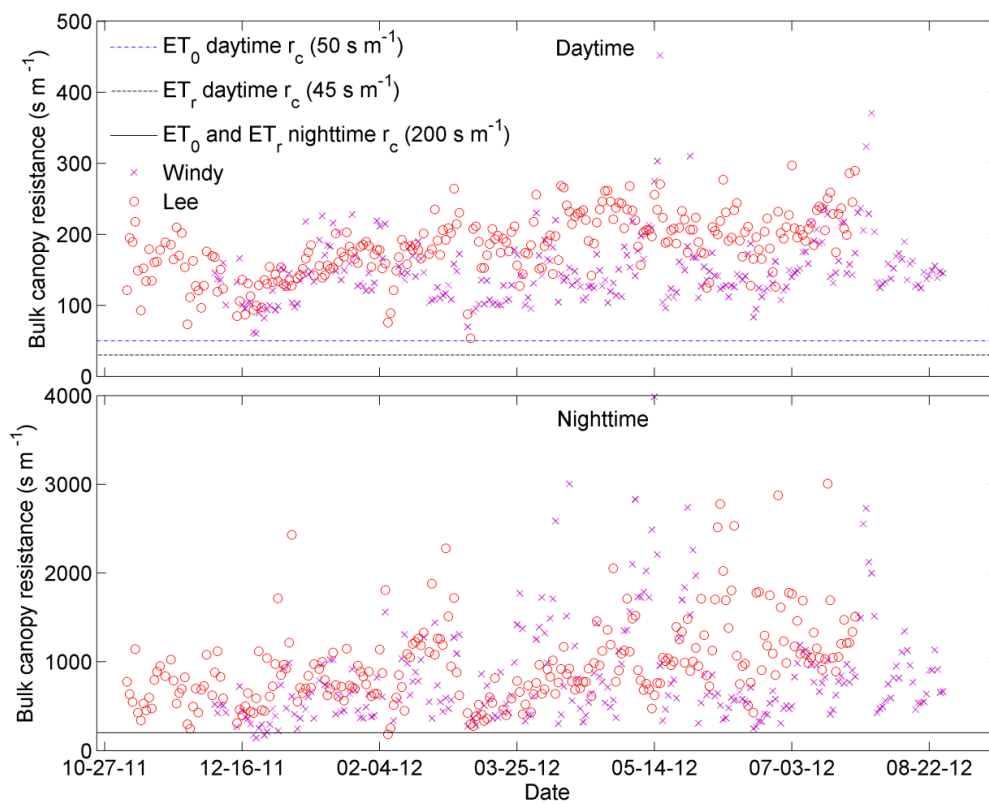


Figure 8: Calculated daily bulk canopy resistances at Windy and Lee from inverting the Priestley-Taylor (PT) ET for the mid-period. Dotted lines again show daily time step resistances from short and tall canopy for comparison.



1
2

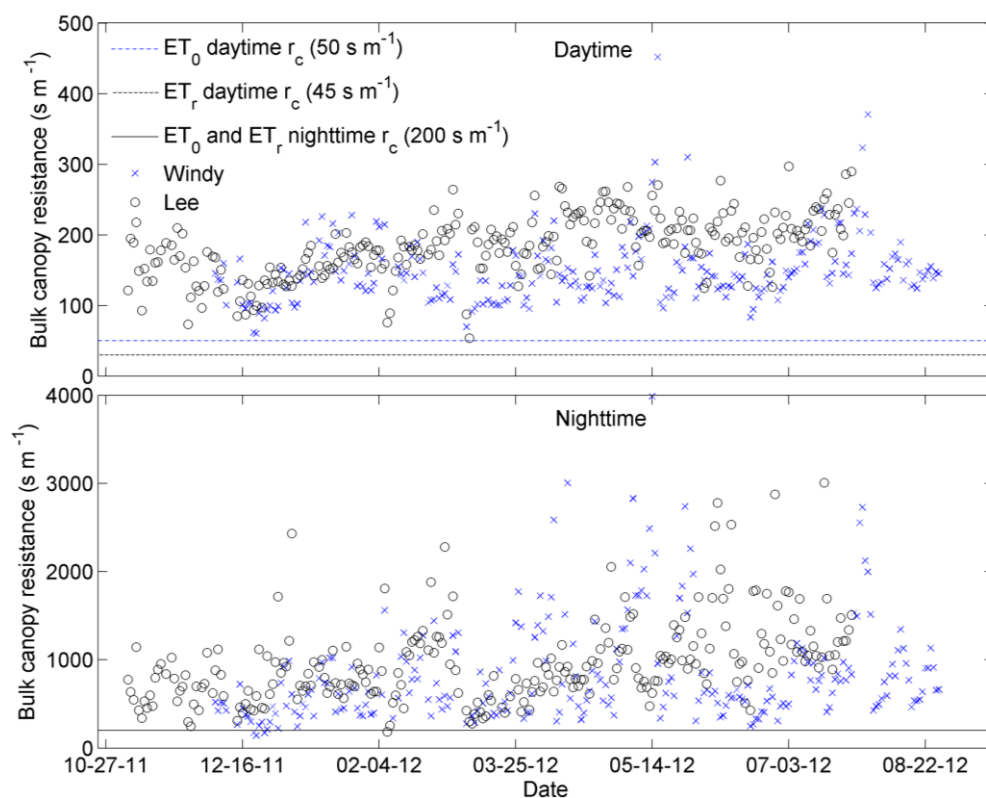
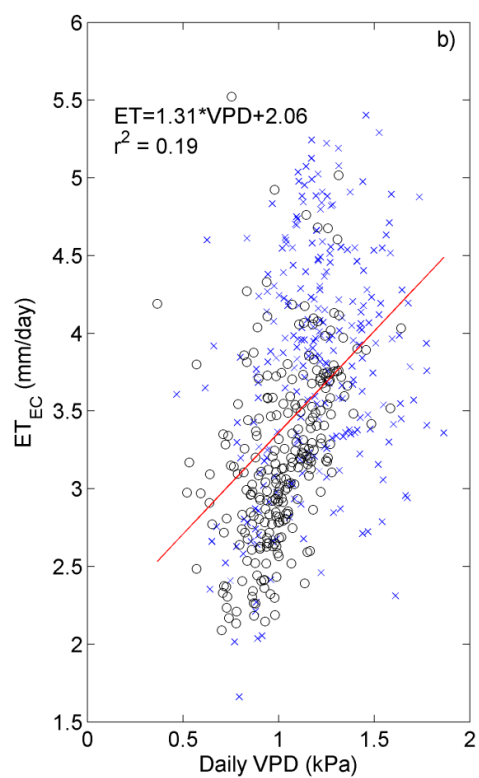
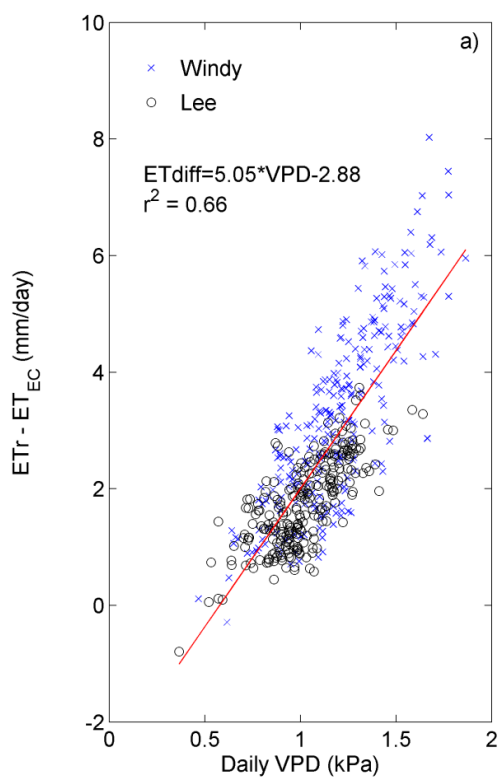


Figure 9: Calculated mean nighttime and daytime bulk canopy resistances (following Fig. 6) compared to assumed resistances.

Formatted: Space After: 10 pt, Hyphenate



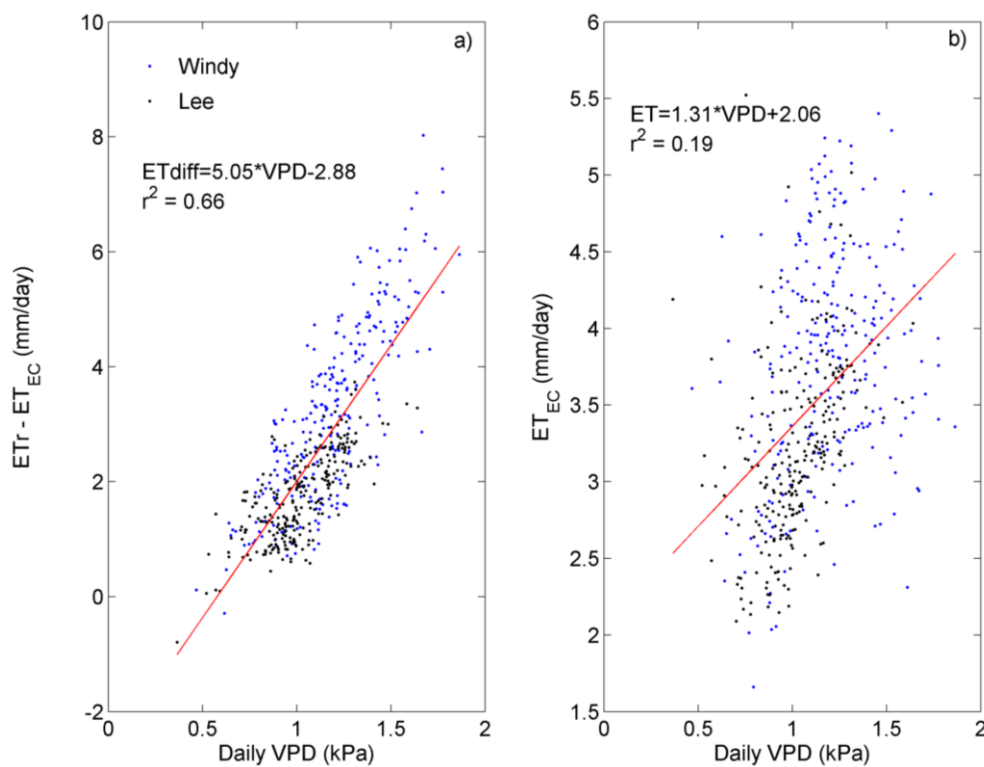
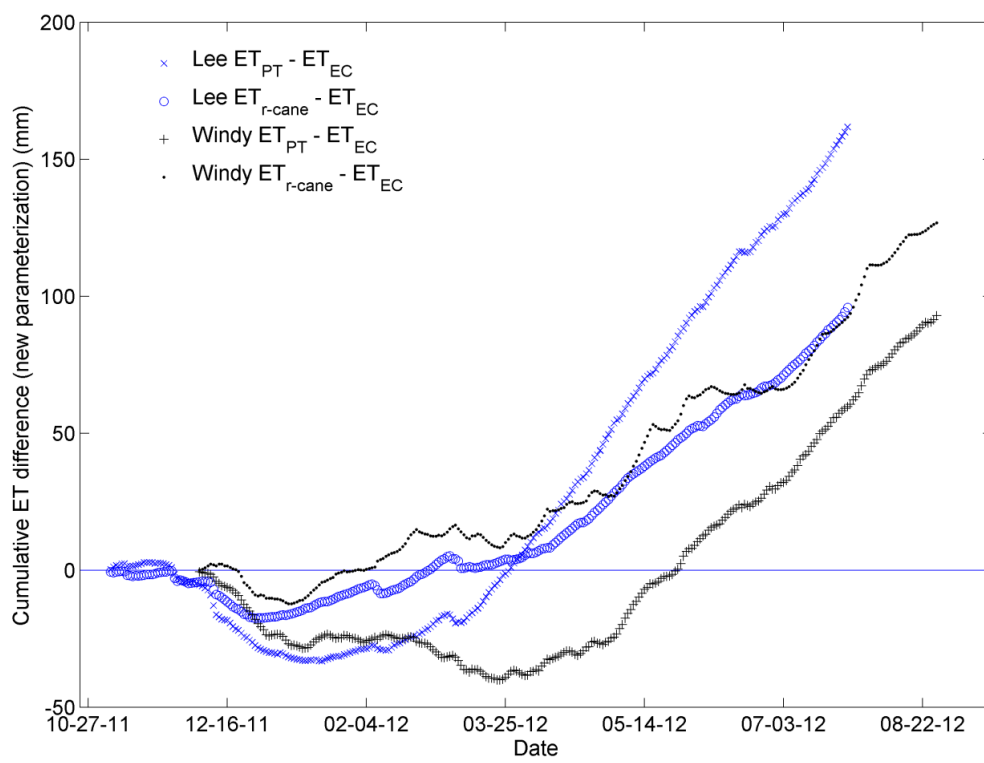


Figure 10: a) Relationship between daily ET discrepancy ($ET_r - ET_{EC}$) and daily Vapor Pressure Deficit (VPD) from the beginning of the mid-period to the end of the study period. Regression equation is fitted to entire pool of data from Lee and Windy. b) Relationship between measured ET and daily VPD. Time period and regression approach are the same as in a).

Formatted: Space After: 10 pt, Hyphenate



1
2

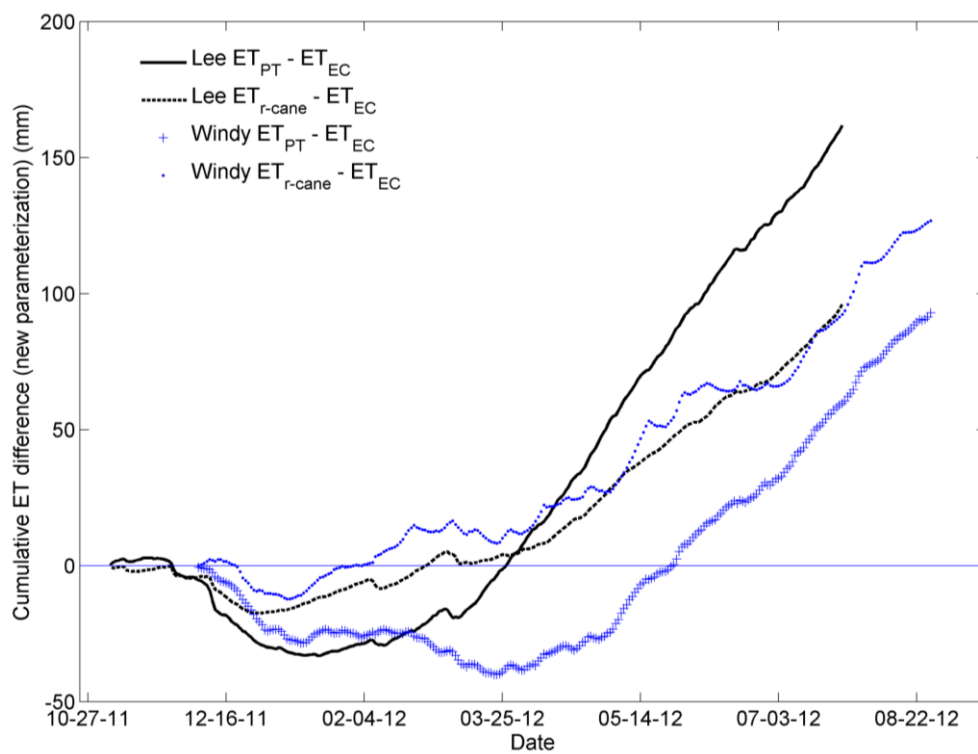


Figure 11: Cumulative difference between new reference ET (custom bulk canopy resistance of 165 s m^{-1}) and measured ET for both EC tower fields during the mid-period.

Formatted: Space After: 10 pt, Don't add space between paragraphs of the same style