

Analyzing runoff processes through conceptual hydrological modelling in the Upper Blue Nile basin, Ethiopia

Mekete Dessie^{1,2*}, Niko E.C. Verhoest², Valentijn R.N. Pauwels⁵, Teshager Admasu^{3,4}, Jean Poesen⁶, Enyew Adgo³, Jozef Deckers⁶ and Jan Nyssen⁴

¹ School of Civil & Water Resources Engineering, Bahir Dar University, P.O.Box 430, Ethiopia

² Laboratory of Hydrology and Water Management, Ghent University, Coupure links 653, B- 9000 Gent, Belgium

³ College of Agriculture & Environmental Sciences, Bahir Dar University, P.O.Box 79, Ethiopia

⁴ Department of Geography, Ghent University, Krijgslaan 281 (S8), B-9000 Gent, Belgium

⁵ Department of Civil Engineering, Monash University, Clayton, Victoria, Australia

⁶ Department of Earth and Environmental Sciences, KU.Leuven, Belgium

* Corresponding author: MeketeDessie.Wossenie@UGent.be

Abstract

Understanding runoff processes in a basin is of paramount importance for the effective planning and management of water resources, in particular in data scarce regions of the Upper Blue Nile. Hydrological models representing the underlying hydrological processes can predict river discharges from ungauged catchments and allow for an understanding of the rainfall-runoff processes in those catchments. In this paper, such a conceptual process-based hydrological model is developed and applied to the upper Gumara and Gilgel Abay catchments (both located within the Upper Blue Nile basin, the Lake Tana sub-basin) to study the runoff mechanisms and rainfall-runoff processes in the basin. Topography is considered as a proxy for the variability of most of the catchment characteristics. We divided the catchments into different runoff production areas using topographic criteria. Impermeable surfaces (rock outcrops and hard soil pans, common in the Upper Blue Nile basin) were considered separately in the conceptual model. Based on model results, it can be inferred that about 65% of the runoff appears in the form of interflow in the Gumara study catchment, and baseflow constitutes the larger proportion of runoff (44-48%) in the Gilgel Abay catchment. Direct runoff represents a smaller fraction of the runoff in both catchments (18-19% for the Gumara, and 20% for the Gilgel Abay) and most of this direct runoff is generated through infiltration excess runoff mechanism from the impermeable rocks or hard soil pans. The study reveals that the hillslopes are recharge areas (sources of interflow and deep percolation) and direct runoff

20 as saturated excess flow prevails from the flat slope areas. Overall, the model study suggests that identifying the catchments into different runoff production areas based on topography and including the impermeable rocky areas separately in the modeling process mimics well the rainfall-runoff process in the Upper Blue Nile basin and brings a useful result for operational management of water resources in this data scarce region.

25 **Key words:** interflow, direct runoff, baseflow, rainfall-runoff, Blue Nile

1 Introduction

The Upper Blue Nile basin, the largest tributary of the Nile River, covers a drainage area
30 of 176 000 km² and contributes more than 50 percent of the long term river flow of the Main Nile (Conway, 2000). The basin (Fig.1a) drains the central and south-western highlands of Ethiopia. The Ethiopian government is pursuing plans and programs to use the water resource potential of the basin for hydropower and irrigation in an effort to substantially reduce poverty and increase agricultural production. The Grand Ethiopian
35 Renaissance Dam near the Ethiopian–Sudan border is currently under construction and several other water resource development projects are underway in its sub-basins.

Owing to such rapidly developing water resource projects in the basin, there is an increasing need for the management of the available water resources in order to boost
40 agricultural production and to meet the demand for electrical power. Sustainable planning and development of the resources depend largely on the understanding of the interplay between the hydrological processes and the availability of adequate data on river discharges in the basin. However, the available hydrological data are limited (for example, presently about 42% of the Lake Tana sub-basin, source of the Blue Nile, is
45 gauged by the Ministry of Water Resources of Ethiopia). Furthermore, research efforts performed so far in the Upper Blue Nile basin with respect to the basin characteristics, hydrology and climatic conditions are scanty and fragmented (Johnson and Curtis, 1994; Conway, 1997; Mishra and Hata, 2006; Antar et al., 2006). Hydrological models that allow for a description of the hydrology of the region play an important role in predicting
50 river discharges from ungauged catchments, and understanding the rainfall-runoff processes in the catchments to enhance hydrological and water resources analysis. As

such, a number of models have been developed and applied to study the water balance, soil erosion, climate and environmental changes in the Blue Nile basin (e.g. Johnson and Curtis, 1994; Conway, 1997; Mishra and Hata, 2006; Kebede et al., 2006; Kim and Kaluarachchi, 2008; Collick et al., 2009; Steenhuis et al., 2009; Tekleab et al., 2011
55 Tilahun et al., 2013).

The Soil and Water Assessment Tool (SWAT) and the Hydrologiska Byråns Vattenbalansavdelning Integrated Hydrological Modelling System (HBV-IHMS) models have been applied in the basin (Setegn et al., 2008; Wale et al., 2009, Uhlenbrook et al.,
60 2010). The SWAT model is based on the Soil Conservation Service (SCS) runoff curve number approach, where the parameter values are obtained empirically from plot data in the United States with a temperate climate. Liu et al. (2008) studied the rainfall–runoff relationships for the three Soil Conservation Research Project (SCRCP) watersheds (Hurni, 1984) in the Ethiopian highlands and showed the limitations of using such models,
65 developed in temperate climates, in monsoonal Ethiopia. Adjusted runoff curve numbers for steep slopes with natural vegetation in north Ethiopia were reported by Descheemaeker et al. (2008).

Using a simple runoff-rainfall relation to estimate inflows to the Lake Tana from ungauged catchments, Kebede et al. (2006) computed the water balance of Lake Tana.
70 However, hills and floodplains were not differentiated in their simplified runoff-rainfall relations. Mishra et al. (2004) and Conway (1997) developed grid-based water balance models for the Blue Nile basin, using a monthly time step, to study the spatial variability of flow parameters and the sensitivity of runoff to climate changes. In both models, the role of topography was not incorporated, and in the model of Conway (1997) soil
75 characteristics are assumed spatially invariant. Very few of the models discussed above attempted to identify the catchments into different hydrological regimes based on the relevant landscape characteristics to study the runoff mechanisms and the hydrological processes in the basin. Landscape characteristics can lead into conceptual structures and relationships or the conceptual hydrological models can benefit from them (Beven,
80 2001). Istanbuloglu and Bras (2005) considered topography as a template for various landscape processes that include hydrologic, ecologic, and biologic phenomena. This is more appealing to the Ethiopian highlands, in particular to the Upper Blue Nile basin, as

farming and farm drainage methodologies, soil and water conservation works, soil properties, vegetation, drainage patterns and density, and even rainfall are much linked to topography in the Ethiopian highlands. Therefore, it remains necessary to investigate the hydrological processes in the Blue Nile basin taking topography as a proxy for the variability of most of the catchment characteristics. The objective of this paper is to study runoff mechanisms in the Upper Blue Nile basin using topography as the dominant landscape component and classify a catchment (as steep, medium and flat slope areas) into different runoff production areas. The study tries to identify the dominant rainfall-runoff mechanism on the hillslopes (steep and medium slop areas) and the valley bottoms (flat areas). A considerable portion of the mountainous areas in the Upper Blue Nile basin consists of impermeable rocks and hard soil pans leading to a different runoff processes. This paper further investigates the contribution of such landscapes in the rainfall-runoff process by including a class for these impermeable rock and hard soil surfaces in the conceptual hydrological model. This approach is not so far tested in the Upper Blue Nile basin. However, similar methodologies to the conceptual hydrological model development are discussed by Savenije (2010). Furthermore, it is necessary to obtain better quality river discharge data in the basin. In this paper, we will face all these challenges. The conceptual hydrological model for the rainfall-runoff studies of the basin is calibrated using good quality discharge data obtained from recently established measurement stations. These outcomes positively add to the existing knowledge and contribute to the development of water resources plans and decision making in the basin.

2 Description of study catchments

The study catchments (Fig. 1b), where the model developed is applied, are located in the Lake Tana basin, the source of the Blue Nile River. The Lake Tana basin, located in the north-western Ethiopian highlands, with a catchment area of 15077 km² (including the lake area), consists predominantly of the Gilgel Abay, Gumara, Rib and Megech Rivers. About 93% of the annual inflow to Lake Tana is believed to come from these rivers (Kebede et al., 2006), and better understanding of the hydrology of these rivers plays a crucial role for an efficient management of the lake and its basin. Two of the sub-

catchments (Gumara and Gilgel Abay) were selected for this study, in order to represent
115 the hilly and mountainous lands of the southern and eastern parts of the sub-basin as the
bulk of it is located here (figure 1), and to optimally use the available data. For both sub-
catchments, large parts of their territory are intensively cultivated. The lower floodplains
in these catchments with their buffering capacity are not considered by this study, but
were discussed by Dessie et al. (2014).

120 The Gilgel Abay catchment (Fig. 1) covers an area of 1659 km² at the gauging station
near Picolo, with elevations ranging between 1800 and 3524 m a.s.l. Soils are
characterized by clay, clay loam and silt loam textures, each texture sharing similar
proportions of the catchment area (Bitew and Gebremichael, 2011). The majority of the
catchment is a basalt plateau with gentle slopes, while the southern part has a rugged
125 topography.

The Gumara catchment covers part of the eastern side of the Lake Tana basin. At its
upper and middle portion, it has mountainous, highly rugged and dissected topography
with steep slopes. The lower part is a valley floor with flat to gentle slopes. Elevation in
the catchment varies from 1780 to 3700 m a.s.l. At the upper gauging station (Fig. 1), the
130 catchment area is 1236 km². Two independent studies found very homogeneous textures
of the soils in this catchment. BCEOM (1998a) described it as dominantly clay with
sandy clay soil at some places in the catchment, while soil data collected by Miserez
(2013) show that texture is clay and clay loam. In the hilly catchments, clay soils are
essentially Nitisols which do not present cracking properties as opposed to lowland
135 Vertisols (Miserez, 2013).

Based on rainfall data from the Dangila and Bahir Dar stations, observed in the period
2000 to 2011, mean annual rainfall is ca. 1500 mm, with more than 80% of the annual
rainfall concentrated from June to September. Geologically, the catchments consist of
Tertiary and Quaternary igneous rocks, as well as Quaternary sediments. The rivers in the
140 hilly areas are generally bedrock rivers, whereas in the floodplain the rivers meander and
sometimes braid (Pope et al., 2013).

Fig. 1 approximately here

145

3 Model development

The model developed is based on a simple water balance approach and the studies by Jothityangkoon et al. (2001), Krasnostein and Oldham (2004) and Fenicia et al. (2008).

150 The setup of this model is shown in Fig. 2. In this modeling approach, the catchment is first split into soil surface and impermeable surface (these are areas with little or no soil cover and bedrock outcropping in the catchment as well as soils with well-developed tillage pans). The runoff from the presumed impermeable areas is modeled as infiltration excess (Hortonian flow) runoff and is represented as Q_{se2} . The other component of the
155 catchment, recognized as the soil surface, is further divided into three using topographic criteria (slope), considering topography as a proxy for the variability of most of the catchment characteristics. Here, two reservoirs are introduced (the soil reservoir and the groundwater reservoir). The slow reacting reservoir (or the groundwater reservoir) is set to be common to all of the three slope based divisions of the catchment as it looks quit
160 inconsistent to separate the groundwater system in the catchment. The catchment buckets (reservoirs) and the conceptual runoff processes are depicted in Fig.2 (b) and (c).

Jothityangkoon et al. (2001) conceptualized the upper soil layer (further referred to as the soil reservoir) as a ‘leaky bucket’. By adding a groundwater reservoir (Krasnostein and Oldham, 2004), the conceptual model for modelling the runoff discharge at the
165 catchment outlet was developed.

Fig. 2 approximately here

In Fig 2, Q_1 [mm/day] is the sum of direct runoff and interflow in the soil reservoir, Q_2 [mm/day] is the baseflow from the groundwater reservoir, Q_{se2} is the direct runoff from impermeable surface of the catchment and the sum of Q_1 , Q_2 and Q_{se2} forms the total
170 river discharge, Q [mm/day], at the outlet of a catchment.

The water storage at any time t within the soil reservoir, $S(t)$ in mm, is determined by the precipitation (P , in mm/day), evapotranspiration (E_a , in mm/day), and other catchment controlled outputs (Fig. 2c(i-iii)). When the storage depth exceeds the field
175 storage capacity (S_f , in mm), precipitation is assumed to be partly transformed into subsurface runoff, to represent inter- or subsurface flow (Q_{ss} , in mm/day), and partly into

deep percolation or recharge (R , in mm/day) to the groundwater (Fig. 2cii). When the soil reservoir fills completely, and the inflows exceed the outflows, surface runoff (Q_{se1} , in mm/day) is generated.

180 Quantitatively, the depth of water stored in the soil, $S(t)$, evolves over time using the water balance:

$$S(t) = S(t - \Delta t) + (P - E_a - Q_{ss} - Q_{se1} - R)\Delta t \quad (1)$$

where P is the precipitation [mm/day], E_a is the actual evapotranspiration [mm/day], $S(t - \Delta t)$ is the previous time step storage [mm], Q_{ss} is the interflow or subsurface runoff [mm/day], Q_{se1} is the direct or overland flow from the soil reservoir [mm/day], R is deep percolation or recharge to the substrata and groundwater [mm/day], and Δt is the time step equal to one day.

Different studies show that some part of the interflow water from the steep hills appears at the hill bottoms during wet periods in the form of increased moisture content or overland flow (Frankenberger et al., 1999; Bayabil et al., 2010; Mehta et al., 2002; 190 Tilahun et al., 2013). These findings reveal that the hill bottoms receive additional inputs to the soil reservoir from the steep upper parts of the hills besides the rainfall. In this modelling approach, it is assumed that steep hills first recharge the medium slope sections, and consequently the medium slope surfaces recharge the flat regions (valley 195 bottoms). The magnitude of the recharge (Q_r , in mm/d) is modelled as:

$$Q_r = \alpha Q_{ss} \quad (2)$$

where α (-) is interflow partitioning parameter and Q_{ss} is as defined above. Equation (1) is, therefore, modified for the medium slope and flat surfaces as

$$S(t) = S(t - \Delta t) + (P + Q_r - E_a - Q_{ss} - Q_{se1} - R)\Delta t \quad (3)$$

200

3.1 Actual evapotranspiration

During wet periods, when the depth of available water exceeds the maximum available soil storage capacity (S_b , in mm), the actual evapotranspiration is equal to the potential

205 evapotranspiration (E_p , in mm/day). When $S(t)$ is lower than S_b , E_a is assumed to decrease linearly with moisture content as follows (Steenhuis and van der Molen, 1986):

$$E_a = E_p \left(\frac{S(t)}{S_b} \right) \quad (4)$$

$$S_b = D\phi \quad (5)$$

where D is the soil depth [mm] and ϕ is the soil porosity (-).

210

3.2 Subsurface runoff

Subsurface runoff, Q_{ss} [mm/day], occurs only when the storage depth exceeds the field storage capacity (S_f , in mm). It is calculated as the difference between the storage and
 215 the field storage capacity, divided by the response time (T_r) of the catchment with respect to subsurface flow (Jothityangkoon et al., 2001):

$$Q_{ss} = \frac{S(t) - S_f}{T_r}, \text{ when } S(t) > S_f \quad (6)$$

$$Q_{ss} = 0, \text{ when } S(t) \leq S_f$$

The field storage capacity of the soil reservoir, S_f [mm], is calculated by

$$S_f = F_c D \quad (7)$$

220 where F_c (-) is the field capacity of the soil (dimensionless).

The catchment response time is the time taken by the excess water in the soil to be released from the soil and drained out from the catchment. This response time depends on the properties of the soil and the topography of the system, and the subsurface flow velocity (V_b , in mm/day) can be expressed as

$$225 \quad V_b = \frac{L}{T_r} \quad (8)$$

where L is the average slope length of the catchment [mm]. From Darcy's law in saturated soils, V_b is also given as

$$V_b = K_s i \quad (9)$$

Where K_s is the saturated hydraulic conductivity of the soil [mm/day] and i is the
230 hydraulic gradient, which is approximated by the average slope gradient (G) of the
catchment.

Brookes et al. (2004) analyzed the variability of saturated hydraulic conductivity with
depth, and they found large K_s values near the surface or root zone layer and the
transmissivity that decreases exponentially with depth. Accordingly, a variation is made
235 between the upper soil layer (that affects interflow) and deep soil layer (percolation to
groundwater) hydraulic conductivities. The permeability (K , in mm/day) of the upper
soil layer for the interflow under different soil water conditions is modelled as:

$$K = K_{s,u} \left(1 - e^{-\beta \frac{S(t)}{S_b}}\right) \quad (10)$$

where β is a dimensionless parameter, and $K_{s,u}$ [mm/day] is the saturated hydraulic
240 conductivity of the upper soil layer, both of which are to be calibrated.

The response time (T_r) in Equation (6) is, hence, approximated from Equations (8), (9)
and (10) as

$$T_r = \frac{L}{GK} \quad (11)$$

Where L and K are as defined in Equations (8) and (10) and G is average slope gradient
245 of the catchment.

The deep percolation or recharge to groundwater (R , in mm/day) under varying soil
water content conditions is modelled as:

$$R = K_{s,e} \left(1 - e^{-\gamma \frac{S(t)}{S_b}}\right) \quad (12)$$

Where γ a dimensionless parameter, and $K_{s,e}$ [mm/day] is the saturated hydraulic
250 conductivity of the deep soil layer, which is to be estimated from the aquifer properties of
the catchments. This equation is identical to Equation (10) such that in both cases it is
assumed that conductivities vary exponentially under varying soil water content
conditions but with different magnitudes.

255 3.3 Saturated excess runoff

Saturated excess runoff or surface runoff (Q_{se1} , in mm/day) is calculated as the depth of water that exceeds the total water storage in the soil reservoir at each time step (Jothityangkoon et al., 2001; Krasnostein and Oldham, 2004).

$$\begin{aligned}
 260 \quad Q_{se1} &= \frac{S(t) - S_b}{\Delta t}, \text{ when } S(t) > S_b \\
 Q_{se1} &= 0, \text{ when } S(t) \leq S_b
 \end{aligned} \tag{13}$$

3.4 Surface runoff from the impermeable areas

Field visits on the Upper Blue Nile basin (including the study catchments) revealed the existence of exposed surfaces that cause strong runoff response. These are areas with little or no soil cover and bedrock outcropping in some parts of the catchment as well as soils with well-developed tillage pans (Melesse Temesgen et al., 2012a, 2012b) (Fig. 3). Hence, runoff from these almost impermeable areas is modeled as infiltration excess (Hortonian flow) runoff with a very small amount of retention before runoff occurs (Steenhuis et al., 2009). The surface runoff from these areas (Q_{se2} , in mm/day) is calculated as

$$\begin{aligned}
 270 \quad Q_{se2} &= P - E_p, \text{ when } P > E_p \\
 Q_{se2} &= 0, \text{ when } P \leq E_p
 \end{aligned} \tag{14}$$

Where P and E_p [mm/day] are as defined above. The impermeable portion of the catchment area (A_r , in km²) is modelled from the total catchment area (A_t , in km²) as

$$275 \quad A_r = \lambda A_t \tag{15}$$

where λ is the fraction of impermeable surface within the catchment.

Fig. 3 approximately here

280 3.5 Groundwater reservoir and baseflow

The introduction of a deep groundwater storage (Fig. 2b) helps to improve low flow predictions. This baseflow reservoir is assumed to act as a non-linear reservoir (Wittenberg, 1999) and its outflow, Q_2 [mm/day], and storage, S_g [mm], are related as

$$285 \quad Q_2 = \frac{S_{g(t)}^{k_1}}{\Delta t} \quad (16)$$

where k_1 is a dimensionless model parameter. The water balance of the slow reacting reservoir (groundwater reservoir) is given by

$$S_{g(t)} = S_{g(t-\Delta t)} + (R - Q_2)\Delta t \quad (17)$$

where $S_{g(t)}$ [mm] is the groundwater storage at the given time step, $S_{g(t-\Delta t)}$ [mm] is the
 290 previous time step groundwater storage, R [mm/day] is the deep percolation, as given by Equation (12).

In total the model has seven parameters:

(i) Parameters for the recharge (α_1 and α_2): In the three slope classification, α_1 is to consider for the recharge from the steeply slope into the medium slope surface and α_2 is
 295 for the recharge from the medium slope surface into the flat surface. There is no parameter for the steeply slope surface since there is no surface that recharges it. So, there are two parameters for the three slope classifications.

(ii) Parameter for the impermeable surface of the catchment (λ)

The catchment is divided into two surfaces (impermeable surface with no or little soil
 300 cover and the soil surface). The parameter λ is introduced to represent the fraction of impermeable surface within the total catchment and this part of the catchment is not classified as steeply, medium slopes and flat surfaces since the classification of this part of the catchment into such classes is not important. So we have one parameter.

(iii) The parameters β , γ , k_1 and $K_{s,u}$

305 These parameters β and γ are introduced to account variability of permeability and deep percolation of soil with soil water storage. k_1 relates discharge and storage for the ground water and $K_{s,u}$ is the saturated hydraulic conductivity in the upper soil layer. We assumed that these parameters are less influenced by topography and each model parameter is assumed to be same for each slope classification of the catchment. Moreover, it is quit

310 inconsistent to separate the groundwater system in the catchment. Therefore, all the three
slope based classified sub-catchments share the same groundwater reservoir.

In this modeling approach, stream-groundwater interactions are assumed to be minimal
and the groundwater is assumed to recharge the streams from deep percolation of rainfall
on the catchments that produces baseflow of the rivers/streams. The storage effect of the
315 streams when considered on the basis of average daily flows of the streams is assumed to
be negligible and hence streamflow routing was not considered for such smaller streams.

3.6 Total river discharge

320

The total river discharge (Q_t , in mm/day) at the outlet of the catchments is given by:

$$Q_t = Q_{ss} + Q_{se1} + Q_{se2} + Q_2 \quad (18)$$

4 Data inputs

325

The data needed for the model are classified into three types: topographical, soil, and
hydrological data.

4.1 Topographical data

330

Steenhuis et al. (2009) found that overland flow in the Blue Nile basin is generated from
saturated areas in the relatively flatter areas and from bedrock areas, while in the rest of
the catchment all the rainfall infiltrates and is lost subsequently as evaporation, interflow
or baseflow. Topographical processes have been found to be the dominant factors in
affecting runoff in the Blue Nile Basin (Bayabil et al., 2010). We used topography of
335 catchments as the main criterion to divide the catchment into different runoff production
surfaces. Based on slope criteria (FAO, 2006), each study catchment was divided into
three sub-catchments as steep (slope gradient > 30%), hilly or medium (slope gradient
between 8 and 30%) and flat (slope gradient < 8%) to consider spatial variability in
340 catchment properties and runoff generation mechanisms (Fig.4).

Fig.4 approximately here

The 30 m by 30 m resolution Global Digital Elevation Model (GDEM) was used to define the topography (downloaded from the ASTER website, <http://earthexplorer.usgs.gov/>). The GDEM (figure 1) was used to delineate and calculate the average slope gradient and average slope length of the catchments (topography-related inputs to the model).

4.2 Soil data

The model requires data on depth, porosity and field capacity of the soils. Soil depth and soil types data (Fig.5 and Fig.6) were obtained from the Abay River Basin integrated master plan study BCEOM (1998a).

Fig.5 approximately here

Fig.6 approximately here

In this modeling philosophy, the soil depth is meant to represent the depth of water stored in the topmost layer (root zone) of the soil (Fig. 2). The porosity and field capacity of the soils were derived from the soil texture based on the work of McWorter and Sunada (1977). From this, we determined the soil textures of the study catchments (Table 1). The saturated hydraulic conductivity for the deep percolation (Equation 12) was estimated using ranges of conductivities given by Domenico and Schwartz (1990) for the saturated hydraulic conductivities of a deep soil layer (colluvial mantle on top of the igneous rock). A summary of the topographic, soil and saturated hydraulic conductivity data for the study catchments is provided in Table 1.

Table 1 approximately here

4.3 Weather data

Daily precipitation is the key input meteorological data for the model. Other meteorological data like minimum and maximum air temperature, humidity, wind speed and duration of sunshine hours were also used to calculate the potential evapotranspiration, the other input variable to the model. All weather data were obtained from the Ethiopian National Meteorological Agency (NMA) for 13 stations located

within and around the catchments (www.ethiomet.gov.et). The location map of the rain gauge stations used for this study are depicted in Fig.7. The data for most of the stations are consistent and continuous, particularly for the first class stations like Dangila, Adet and Debretabor. However, we encountered gaps in some stations like Sekela Station for some periods in the year. In such instances, only the rainfall data from the other stations were considered. Most of the rainfall stations in Gilgel Abay catchment are installed at the water divides and there is no station in the middle of the catchment. In this regard, the Gumara catchment has a higher density of rainfall stations. The areal rainfall distribution over the catchments was calculated using the Thiessen Polygon method, and the potential evapotranspiration was calculated using the FAO Penman-Monteith method (Allen et al., 1998).

Fig.7 approximately here

4.4 River discharge

Starting from July 2011 water level was measured at the Wanzaye station (11.788073°N, 37.678266°E) on Gumara River and from December 2011 at the Picolo station (11.367088°N, 37.037497°E) on Gilgel Abay River. The water level measurements were made using Mini-Divers, automatic water level recorders (every 10 minutes), and manual readings from a staff gauge (three times a day, at 7 AM, 1 PM and 6 PM), following the procedures described by Amanuel et al. (2013).

Discharges were computed from the water levels using rating curves (Equations 19 and 20) for each station. The rating curves (Fig.8) were calibrated based on detailed surveys of the cross-sections of the rivers and measurements of flow velocity at different flow stages, using the following commonly used expression:

$$Q = ah^b \quad (19)$$

where a and b are fitting parameters and Q [m³/s] and h [m] are discharge and water level respectively. The resulting rating curve equation for the Gumara catchment at the gauging station (Wanzaye Station) is:

$$Q = 44.1h^{1.965} \quad (R^2=0.997, n=12) \quad (20)$$

and for Gilgel Abay catchment at Picolo Station:

$$Q = 70.39 h^{2.105} \quad (R^2=0.985, n =14) \quad (21)$$

Fig.8 approximately here

405 Compared to the discharge data that have been gathered in the past, the discharge data that are acquired for this study are of superior quality, since a high time resolution during the measurement has been used. This minimizes the risk of missed peaks, particularly during the night. Furthermore, frequent supervision was also made during the data collection campaign. Hence, these data were used for the model calibration. Discharge
410 data collected before December 2011 were obtained for nearby stations from the Hydrology Department of the Ministry of Water Resources of Ethiopia, which has a long data record (since 1960) for these stations. However, the latter measurements were made using staff gauge readings twice a day, with many data gaps and discontinuities, particularly at the end of the observation window. The discharge data from 2000-2005 are
415 relatively better and are used to validate the model.

The 2012 discharge data for Dirma catchment (outlet at 12.427194°N, 37.326209°E), collected in the same way as those of Gilgel Abay and Gumara, were used to assess the transferability of the model parameters.

420 **5 Calibration and validation**

The model calibration and validation were performed at a daily time step, and the hydrological datasets of 2012 and 2011-2012 were used to calibrate the Gilgel Abay and Gumara catchments, respectively. Discharge data of 2000-2005 were used for validation.
425 There are 7 calibration parameters in this model (Table 2), and the calibration was performed using the Particle Swarm Optimization (PSO) algorithm. PSO is a population based stochastic optimization technique inspired by social behavior of bird flocking or fish schooling (Kennedy and Eberhart, 1995). The advantages of PSO are that the algorithm is easy to implement and that it is less susceptible to getting trapped in local
430 minima (Scheerlinck et al., 2009). We carried out 50 iterations and 50 repetitions, in total 2500 runs for each catchment to search for the optimal value of the model parameters (Table 2) and 30 particles were used in the PSO. The criterion in the search for the

optimal value was to minimize the root mean squared error (*RMSE*) as the objective function, given by:

$$435 \quad RMSE = \sqrt{\frac{\sum_{i=1}^n (Q_{obs,i} - Q_{sim,i})^2}{n}} \quad (22)$$

where Q_{obs} is observed discharge [mm/day], Q_{sim} is simulated or modelled discharge [mm/day], and n is the number of data points. The parameter values corresponding to the minimum *RMSE* were considered as optimum. From the optimal model parameters, the performance of the model was also evaluated using (i) the Nash-Sutcliffe Efficiency

440 (*NSE*) according to Nash and Sutcliffe (1970), and (ii) the coefficient of determination (R^2).

$$NSE = 1 - \frac{\sum_{i=1}^n (Q_{sim,i} - Q_{obs,i})^2}{\sum_{i=1}^n (Q_{obs,i} - \bar{Q}_{obs})^2} \quad (23)$$

$$R^2 = \left[\frac{\sum_{i=1}^n (Q_{sim,i} - \bar{Q}_{sim})(Q_{obs,i} - \bar{Q}_{obs})}{\sqrt{\sum_{i=1}^n (Q_{sim,i} - \bar{Q}_{sim})^2} \sqrt{\sum_{i=1}^n (Q_{obs,i} - \bar{Q}_{obs})^2}} \right]^2 \quad (24)$$

where \bar{Q}_{obs} [mm/day] and \bar{Q}_{sim} [mm/day] are the mean observed and simulated

445 discharges, respectively.

Percent bias (*PBIAS*) is used as an additional model performance indicator. It measures the average tendency of the simulated data to be larger or smaller than the observations (Gupta et al., 1999). The optimal value of *PBIAS* is 0.0, with lower values indicating better model simulation (positive values indicate overestimation, whereas negative values

450 indicate model underestimation bias).

$$PBIAS = \frac{\sum_{i=1}^n (Q_{sim,i} - Q_{obs,i})}{\sum_{i=1}^n Q_{obs,i}} * 100\% \quad \text{-----}(25)$$

Table 2 approximately here

The impacts of model parameters on the output of the model when their values are different from the calibrated optimal values were evaluated with respect to the Root Mean Squared Error for Gumara catchment. The sensitivity analysis was made by randomly selecting parameter values in the region of the optimal values obtained from PSO and calculating *NSE* for each selected value. The applicability of the model to other ungauged catchments outside the study catchments in the Lake Tana basin was also tested using direct parameter transferability.

460

6. Soil and Water Assessment Tool (SWAT) and (FlexB) models as benchmarks for comparison with this paper model

The two models are used as benchmark models to assess the performance of the model of this paper (hereafter named as Wase -Tana model, in favor of the project name that funded this study), which tries to use all available information and considers topography as a good proxy for the variability of most of the catchment characteristics in the Upper Nile basin.

470

6.1 SWAT Model

SWAT is a basin-scale and continuous-time model, used to simulate the quality and quantity of surface and ground water and predict the environmental impact of land use, land management practices, and climate change (Arnold et al., 1998). The hydrological model is based on the water balance equation

$$SW_t = SW_0 + \sum_{i=1}^t (R_i - Q_i - ET_i - P_i - QR_i) \quad (26)$$

Where: SW_t is the soil water content at time t , SW_0 is the initial soil water content, t is the time step in days and R_i, Q_i, ET_i, P_i and QR_i respectively are the daily amounts of precipitation, runoff, evapotranspiration, percolation and return flow. All units are in mm. In SWAT, a watershed is divided into homogenous hydrologic response units (HRUs) based on elevation, soil, management and land use, whereby a distributed parameter such as hydraulic conductivity is potentially defined for each HRU. Hence, an analyst confronts with the difficult task of collecting or estimating a large number of input

parameters, which are usually not available for regions like the Upper Blue Nile basin.
485 Details of the model can be accessed at the SWAT website (<http://swatmodel.tamu.edu>).
Automatic calibration and validation of the model was made using SWAT-CUP. It is an
interface that has been developed for SWAT automatic calibration and model uncertainty
analysis (Abbaspour et al., 2007). Coefficient of determination (R^2) and Nash-Sutcliffe
Efficiency (NSE) were used as objective functions during the calibration process of the
490 search for the optimal value.

6.2 FlexB Model

This model is a lumped conceptual type and it is characterized by three reservoirs as
495 described by Fenicia et al. (2008): the unsaturated soil reservoir (UR), the fast reacting
reservoir (FR) and the slow reacting reservoir (SR). The model has eight parameters: a
shape parameter for runoff generation β [-], the maximum UR storage S_{fc} [mm], the
runoff partitioning coefficient D [-], the maximum percolation rate P_{max} [mm/h], the
threshold for potential evaporation L_p [-], the lag times of the transfer functions N_{lag} [h],
500 and the timescales of FR and SR: K_f [h] and K_s [h]. Details of the model and the various
equations of the model can be referred to Fenicia et al. (2008).

Calibration of this model was made using the particle Swarm Optimization (PSO)
technique, following similar procedures of the Wase –Tana model calibration algorithm.
The same objective function, root mean squared error (RMSE), is also used in the search
505 for the optimal value.

7 Results and discussion

510 7.1 The daily hydrograph and model performance indicators

a) Wase –Tana model performance

Figures 9 and 10 show a comparison of the modeled with the observed discharge data for
the two study catchments and for both the calibration and validation periods.

515

Fig. 9 approximately here

Despite the possible spatial variability of some input data (average soil and rainfall data are considered) and the simplicity of the model, discharge is reasonably well simulated during both the calibration and validation periods. This can be seen from the visual inspection of the hydrographs and from the model performance indicators (Table 3).

Fig. 10 approximately here

Table 3 approximately here

The Nash-Sutcliffe efficiency of the model is high for both catchments. In the calibration period, *NSE* equals 0.86 for Gumara catchment and 0.84 for Gilgel Abay catchment, while they are 0.78 and 0.7, respectively, during the validation period. Figures 9 and 10 also show that the model simulates well the overall behavior of the observed streamflow hydrographs. However, an overestimation of the large flood peaks for the Gilgel Abay catchment is found for the validation period. In the calibration period for this catchment, the model errors tend to increase during wetting up periods almost for all the models. Initially, the soils are relatively dry and most of the rainfall during the beginning of the rainy season is not effective to produce runoff in the model as the soil reservoir has to be filled first to generate the faster component of the runoff. Besides model uncertainties, the rainfall data quality can also affect the model performance, mainly in the case of the Gilgel Abay catchment. The R^2 values for the time series of daily streamflow between simulated and observed values were 0.80 to 0.86 for the Gumara catchment, and from 0.79 to 0.85 for the Gilgel Abay catchment, for the validation and calibration periods, respectively. Generally, the modelled discharges appear to be less variable over time than the observations, as shown by the standard deviations in Table 3. This is likely due to the fact that data used in the model are averaged over the year, while observed river discharges are highly seasonal. We used average daily rainfall data, average soil data (e.g. porosity, field capacity, and soil depth), average catchment characteristics data (e.g. slope, slope length) to mention some for the model inputs. Hence, this averaged condition may be one source of error such that the model may not exactly mimic extremes like peak discharges.

b) Performance in comparison with the benchmark models

550 For the calibration period, almost all the three models performed pretty well (Table3).
However, an appreciable decrease in model performance has been noticed for the
validation period in Gilgel Abay catchment for the benchmark models. SWAT is a
physically-based complex model, requiring extensive input data which is a challenge for
data scarce regions like the Upper Blue Nile basin. The model simulations can only be as
555 accurate as the input data. This suggests that the coarser data input used for the model in
the study catchments might have affected significantly the calibration and consequently
the validation simulations. On the other hand, the likely reason for a decreased
performance of the Flex_B model for the Gilgel Abay catchment is the oversimplification
of the catchment heterogeneity, since it is a lumped one and the impact is more when the
560 catchment gets bigger (Gilgel Abay catchment is bigger than Gumara catchment).

A look at the flow duration curves (Fig.11 and Fig.12) indicates the higher uncertainty
of the two benchmark models (mainly SWAT model) with respect to low flow
predictions.

Fig.11 approximately here

565 ***Fig.12 approximately here***

In relative terms, Wase-Tana model offers more flexibility in adapting the model to the
catchments based on the validation simulation performances. This can be attributed to the
consideration of topography driven landscape heterogeneity analysis and catchment
information extraction for the model, which strengthens the hypothesis that topography
570 driven model structure and use of all available information on hydrology based on
topography is a good choice for the Upper Blue Nile basin. From a comparison of four
model structures on the Upper Heihe in China, Gao et al. (2014) also confirmed that
topography-driven model reflects the catchment heterogeneity in a more realistic way.

575 **7.2 The hydrograph components and hydrological response of the catchments**

This hydrological model (Wase-Tana model) is based on the generation of direct runoff
from saturated and impermeable (degraded surfaces and rock outcrops with little or no

soil cover) areas, interflow from the soil storage in the root zone layer and baseflow from
580 the deeper layer as groundwater storage. The understanding of the relative importance of
these processes on the hydrological response of each catchment is still unknown. The
mean annual surface runoff (Q_{se} , sum of Q_{se1} and Q_{se2}), interflow or subsurface flow
(Q_{ss}) and baseflow (Q_2) components of the total daily hydrograph computed by the model
for the calibration and validation periods are given in Table 4.

585

Table 4 approximately here

The total mean annual runoff generated by the model is in line with the observations
for both catchments in the calibration period (Table 4), while an appreciable difference is
noticed in the values for the Gilgel Abay catchment in the validation period. One of the
590 problems in accurate modelling of the discharge is that precipitation measurements do not
cover well the catchments. This is particularly the case for the Gilgel Abay catchment,
where the rainfall stations are poorly distributed as most of the meteorological stations lie
near the water divides. The calibration results are better, since the data from the recently
established precipitation stations (e.g. Durbetie) could be used. There are also doubts on
595 the representativeness of the discharge data used for the validation of the model, because
the water level measurements were made manually and twice daily (in the morning and
late afternoon), leading to the possibility of missing flash floods at other moments of the
day as the stream discharge is very variable. This can be clearly seen from the mean
annual observed flows during the calibration and validation periods for Gilgel Abay. The
600 mean annual observed flow in the validation period was found to be much smaller than
the corresponding flow during the calibration period (Table 4). The closer total mean
annual runoff values and the better model performance indicators for the Gumara
catchment during the calibration period suggest that the model can perform satisfactorily
with better input discharge and precipitation data.

605 From PBIAS results (Table 3), Flex_B model has showed overestimated bias and SWAT
model behaved the opposite for both catchments during the calibration period.

Despite the variations in mean annual runoff generated by the Wase-Tana model, the
partitioning of the total runoff into the different components (Table 4) in each period is
almost identical for each catchment, as expected. About 65% of the runoff appears in the

610 form of interflow for the Gumara catchment, and baseflow takes the larger proportion for
Gilgel Abay catchment (44 - 48%). Uhlenbrook et al. (2010) obtained the baseflow to be
about 32% from similar model study results for Gilgel Abay catchment. Vogel and Kroll
(1992) have showed that baseflow is a function of catchment area, and geomorphological,
615 geological and hydrogeological parameters of the catchment have a linear incidence on
the discharges. The difference between the baseflow of the two catchments is high,
despite their comparable catchment sizes, suggesting rather the different structure,
functioning and hydrodynamic properties of the two catchments. Hence, the model
results reveal that the groundwater in the Gilgel Abay catchment receives more recharge
and makes a greater contribution to the river flow. This is in line with Kebede (2013) and
620 Poppe et al. (2013), who show that the largest part of the Gilgel Abay catchment consists
of pumice stones and fractured quaternary basalts with a high infiltration capacity and
hydraulic properties, which clarifies the large groundwater potential. *In line with this*,
several big springs exist in the catchment, including one that is used as a source of water
supply for Bahir Dar town (Fig.13).

625 ***Fig.13 approximately here***

The other interesting result is that direct runoff is the smallest fraction of the total
runoff for both catchments (18-19% for Gumara and 20% for Gilgel Abay) and almost all
peak flow incidences are associated with direct runoff. More than 90% of this direct
runoff is found to be from the relatively impermeable (degraded areas, plough pans or
630 rock outcrops with little or no soil cover) surfaces. The calibrated result shows that this
type of runoff production area covers 15% of the Gumara and 17% of the Gilgel Abay
catchments, respectively. In a similar study, Steenhuis et al. (2009) mention that the rock
outcrops occupy 20% of the total catchment area in the Abay (Blue Nile) catchment at
the Ethiopia–Sudan border upstream of the Rosaries Dam, which is very similar to the
635 result of Gilgel Abay catchment in this study.

The remaining direct runoff is generated from the flat slopes of the catchments as
saturated excess runoff, probably near the valley bottoms. The hillslopes (medium and
steep slope source areas in this paper) generated almost no direct runoff as saturated
excess flow. Similar results were obtained by different researchers in the Blue Nile Basin,
640 who identified hillslopes as main recharge areas (Steenhuis et al., 2009, Collick et al.,

2009, Tilahun et al., 2013). Our results contribute to the debate on the relative importance of saturated excess runoff versus infiltration excess runoff (Hortonian overland flow) mechanisms in the Upper Blue Nile Basin, showing that the rainfall-runoff processes are better represented by the soil reservoir methodology. Yet, further research is necessary
645 that involves rainfall intensity and event-based analysis of hydrographs.

7.3 Transferability of model parameters to other ungauged catchments and sensitivity

650 The sensitivity analysis was performed on model parameters for Gumara catchment with respect to the Root Mean Squared Error.

Fig. 14 approximately here

Fig. 15 approximately here

The parameters β , αI and γ show poor sensitivity for a wide range of values with respect
655 to the local sensitivity analysis. The local sensitivity analysis shows the sensitivity of a variable to the changes in a parameter if all other parameters are kept constant at some value (optimal value in this case). An increase in the value of β beyond 1.4 showed almost no sensitivity, while the model efficiency decreased slightly after an increase in the value of γ from the optimum. This means that there is little confidence in the model's
660 correspondence with these parameters and they can be reduced without appreciable impact on the model (Fenicia et al., 2008). kI , $K_{s,u}$ and λ are very sensitive parameters in this model and the model performance drops abruptly if the parameters exceed beyond some threshold value (Fig.14).

The global sensitivity analysis (Fig.15), however, shows interactions among all the input
665 parameters of the model. Although global sensitivity analysis reveals details of the model behavior in a more general sense through random parameter sampling and that the parameters are all sensitive, the local sensitivity analysis indicates that moderate variations of the parameter values for some parameters can still drastically change the model performance.

670 The model parameter transferability to other ungauged catchments in the basin has been tested by analyzing the variability among the calibrated parameters of the two

catchments. Table 2 shows that the calibrated parameters are nearly identical for both catchments, except for γ and λ , which are related to deep percolation and impermeable fraction of the catchment, respectively. As described above, they affect the baseflow and direct runoff contributions to the total river flow. However, we showed that the contributions of these components to the total runoff are relatively small and γ is poorly sensitive to a wide range of values. Thus the influence of these parameters is expected to be minimal. This is verified by generating flows using the average of the calibrated parameters of the two catchments and analyzing the effect on the model performance indicators (Table 5). The model performance obtained using the average model parameter values is similar to the results found using the optimal model parameters (Table 3). To further verify the adaptability of the average calibrated model parameter values outside the study catchments and see the impacts of scale, we applied the average parameter values to another catchment (Dirma catchment in the northern part of the Lake Tana sub-basin, Fig.1) with an area of 162.6 km². Encouraging model efficiency could be obtained, with *NSE* and *R*² values of 0.58 and 0.6 respectively (Table 5). This is to be elaborated further in the future, involving more catchments and more years of data.

Table 5 approximately here

In general, transferability results showed good performance of the daily runoff model in the two study catchments and an average performance in the test catchment (Dirma catchment). This can be explained by the fact that emphasis was made to incorporate more knowledge in the model structure to increase model realism. We based strongly on the soil storage characterization of the soil reservoir in the rainfall-runoff process and representation of the maximum storage of the unsaturated reservoir at the catchment scale, which is closely linked to rooting depth and soil structure and strongly depends on the ecosystem. Transferability of the model has benefited from this in that we were able to derive most of the input data from the test catchments. The consideration of topography driven landscape heterogeneity analysis and catchment information extraction based on topography (slope) for the model is another reason for the better performance of the model transferability. The role of topography in controlling hydrological processes and its linkage to geology, soil characteristics, land cover, and climate through

705 coevolution have been indicated in different studies (Sivapalan, 2009, Savenije, 2010, Gao et al., 2014). The results suggest the possibility of directly using the average model parameter values for other ungauged catchments in the basin, even though further tests on such catchments is still recommended. However, we believe that this is a useful result for operational management of water resources in this data scarce region.

710 **8 Conclusion**

In this paper, a simple conceptual semi-distributed hydrological model was developed and applied to the Gumara and Gilgel Abay catchments in the Upper Blue Nile basin, Lake Tana sub-basin, to study the runoff processes in the basin. Good quality discharge data were collected through a field campaign using automatic water level recorders with high time resolution. We used the topography and soil texture data of the catchments as the dominant catchment characteristics in the rainfall-runoff process. In the model, a distinction is made between impermeable surfaces (degraded surface or exposed rock with little or no soil cover) and permeable (soil) surfaces, as different types of source areas for runoff production. The permeable surfaces were further divided into three subgroups using topographic criteria such as flat, medium, and steep slope areas. The rainfall-runoff processes were represented by two reservoirs (soil and groundwater reservoirs) and the water balance approach was used to conceptualize the different hydrological processes in each of the two reservoirs. Such a detailed form of modelling, using topography as a dominant landscape characteristics to classify a catchment into different hydrological regimes, has not been applied yet in the Upper Blue Nile, Lake Tana sub-basin.

720 We demonstrated that the model performs well in simulating river discharges, irrespective of the many uncertainties. Model validation indicated that the Nash–Sutcliffe values for daily discharge were 0.78 and 0.7 for the Gumara and Gilgel Abay catchments, respectively.

730 We were able to partition the total runoff into a fast component (direct runoff and interflow) and a slow component (baseflow) and estimated the contributions of each component for the catchments. About 65% of the runoff appears in the form of interflow

735 for the Gumara catchment, and baseflow is responsible for the larger proportion of the discharge for the Gilgel Abay catchment (44-48%). Direct runoff generates the lower fraction of runoff components in both catchments (18-19% for the Gumara and, 20% for the Gilgel Abay) and almost all peak flow incidences are associated with direct runoff. More than 90% of this direct runoff is found to be from the relatively impermeable (plough pan or rock outcrops with little or no soil cover) source areas. The hillslopes (medium and steep slope source areas) are recharge areas (sources of interflow and deep percolation) and generated almost no direct runoff as saturated excess flow.

740 The results of this study, with comparisons to two benchmark models, clearly demonstrate that topography is a key landscape component to consider when analyzing runoff processes in the Upper Blue Nile basin. Generally, runoff in the basin is generated both as infiltration and saturation excess runoff mechanisms. A considerable portion of the landscape in the Upper Blue Nile basin consists of impermeable rock outcrops and hard soil surfaces (15%-17% of the total catchment area as per the results of this study) and they are the sources of most of the direct runoff. This conceptual model, developed to study the runoff processes in the Upper Blue Nile basin, may help to predict river discharge for ungauged catchments for a better operation and management of water resources in the basin, owing to its simplicity and parsimonious nature with respect to parameterization. The runoff processes in the basin are also found to be affected much by the rainfall, as the performance of the model was better for those study catchments where coverage of rainfall stations was good. Hence a better spatial and temporal resolution of rainfall data is required to further improve the model performance and to further enhance the understanding of the runoff processes in the basin.

760

765 **Acknowledgments**

We wish to acknowledge the efforts of the field staff and data collectors for their help during the installation of monitoring stations and data recording. We thank the project staff and MSc students for the logistic help and valuable field inputs. We are grateful to the Ministry of Water and Energy and National Meteorological Agency of Ethiopia for making data available. This research was supported by the Belgian Development Cooperation (VLIR-UOS, WASETANA project).

References

- 775 Abbaspour, K.C., Yang, J., Maximov, I., Siber, R., Bogner, K., Mieleitner, J., Zobrist, J.,
and Srinivasan, R.: Modelling hydrology and water quality in the pre-
alpine/alpine Thur watershed using SWAT, *Journal of Hydrology*, 333:413-430,
2007.
- Allen, R.G., Pereira, L.S., Raes D., and Smith, M.: Crop evapotranspiration. Guide-
lines for computing crop water requirements, *FAO Irrigation and Drainage Paper 56*,
780 *FAO, Rome, 1998.*
- Amanuel Zenebe, Vanmaercke, M., Poesen, J., Verstraeten, G., Nigussie Haregeweyn,
Mitiku Haile, Kassa Amare, Deckers, J., and Nyssen, J.: Spatial and temporal
variability of river flows in the degraded semi-arid tropical mountains of northern
Ethiopia, *Zeitschrift für Geomorphologie*, 57(2): 143-169, 2013.
- 785 Antar, M.A., Ellassiouti, I., and Allam, M.N.: Rainfall-runoff modeling using artificial
neural networks technique: a Blue Nile catchment case study, *Hydrological
Processes* 20: 1201–1216, 2006.
- Arnold, J.G., Srinivasin, R., Muttiah, R.S., and Williams, J. R.: Large Area Hydrologic
Modeling and Assessment: Part I. Model Development, *JAWRA Journal of the
790 American Water Resources Association* 34(1):73-89, 1998.

- Bayabil, H.K., Tilahun, S.A., Collick, A.S., and Steenhuis, T.S.: Are runoff processes ecologically or topographically driven in the Ethiopian Highlands? The case of the Maybar, *Ecohydrology*, 3, 457–466, doi:10.1002/eco.170, 2010.
- 795 BCEOM. : Abay River Basin Integrated Development Master Plan – Phase 2 – Land Resources Development – Reconnaissance Soils Survey, Ministry of Water Resources: Addis Ababa; 208 pp, 1998a.
- Beven, K.: On landscape space to model space mapping, *HP today, Hydrol. Process.*, 15, 323–324, 2001.
- 800 Bitew, M.M., and Gebremichael, M.: Assessment of satellite rainfall products for streamflow simulation in medium watersheds of the Ethiopian highlands, *Hydrol. Earth Syst. Sci.*, 15, 1147–1155, doi: 10.5194/hess-15-1147-2011, 2011.
- Brooks, E.S., Boll, J., McDaniel, and P.A.: A hillslope-scale experiment to measure lateral saturated hydraulic conductivity, *Water Resour. Res.*, 40, W04208, doi: 10.1029/2003WR002858, 2004.
- 805 Collick, A.S., Easton, Z.M., Ashagrie, T., Biruk, B., Tilahun, S., Adgo, E., Awulachew, S.B., Zeleke, G., and Steenhuis, T.S.: A simple semidistributed water balance model for the Ethiopian highlands, *Hydrological Processes* 23: 3718–3727, 2009.
- Conway, D.: A water balance model of the upper Blue Nile in Ethiopia, *Hydrological Sciences* 42: 265–282, 1997.
- 810 Conway, D.: The Climate and hydrology of the Upper Blue Nile River, *The Geographical Journal* 166: 49-62, 2000.
- Descheemaeker, K., Poesen, J., Borselli, L., Nyssen, J., Raes, D., Mitiku Haile, Muys, B., and Deckers, J.: Runoff curve numbers for steep hillslopes with natural vegetation in semi-arid tropical highlands, northern Ethiopia, *Hydrological Processes* 22:4097-4105. (DOI: 10.1002/hyp.7011), 2008.
- 815 Domenico, P.A., and Schwartz, F.W.: *Physical and Chemical Hydrogeology*, John Wiley & Sons, New York, 824 p, 1990.
- Fenicia, F., Savenije, H.H.G., Matgen, P., and Pfister, L.: Understanding catchment behavior through stepwise model concept improvement, *Water Resour. Res.*, 44, W01402, doi: 10.1029/2006WR005563, 2008.
- 820

- Food and Agriculture Organization of the United Nations, Rome (FAO): Guidelines for soil description, Rome, Italy, 2006.
- Frankenberger, J.R., Brooks, E.S., Walter, M.T., Walter, M.F., Steenhuis, T.S.: A GIS-Based Variable Source Area Hydrology Model, *Hydrological Processes*. 825 13(6):804-822, 1999.
- Gao, H., Hrachowitz, M., Fenicia, F., Gharari, S., and Savenije, H. H. G.: Testing the realism of a topography-driven model (flex-topo) in the nested catchments of the upper heihe, china, *Hydrol. Earth Syst. Sci.*, 18, 1895-1915, 10.5194/hess-18-1895-2014, 2014.
- 830 Gupta, H. V., Sorooshian, S., and Yapo, P.O.: Status of automatic calibration for hydrologic models: Comparison with multilevel expert calibration, *J. Hydrologic Eng.* 4(2): 135-143, 1999.
- Hurni, H.: Third Progress Report, Soil Conservation Research Project, Vol. 4. University 835 of Berne and the United Nations University, Ministry of Agriculture, Addis Ababa, 1984.
- Istanbulluoglu, E., and Bras R. L.: Vegetation-modulated landscape evolution: Effects of vegetation on landscape processes, drainage density, and topography, *J. Geophys. Res.*, 110, F02012, doi: 10.1029/2004JF000249, 2005.
- 840 Johnson, P.A., and Curtis, P.D.: Water balance of Blue Nile River Basin in Ethiopia, *Journal of Irrigation and Drainage Engineering*: ASCE 120: 573–590, 1994.
- Jothityangkoon, C., Sivapalan, M., and Farmer, D.L.: Process controls of water balance variability in a large semi-arid catchment: downward approach to hydrological model development, *Journal of Hydrology* 254 (2001) 174-198, 2001.
- 845 Kebede, S., Travi, Y., Alemayehu, T., and Marc, V.: Water balance of Lake Tana and its sensitivity to fluctuations in rainfall, Blue Nile basin, Ethiopia, *Journal of Hydrology* 316: 233–247, 2006.
- Kebede, S.: *Groundwater in Ethiopia: Features, Numbers and Opportunities*, ISBN 3642303919, Springer, 297 p. DOI 10.1007/978-3-642-30391-3, 2013.
- 850 Kennedy, J., and Eberhart, R.: Particle Swarm Optimization, *Proceedings of IEEE International Conference on Neural Networks, IV*. pp. 1942–1948, 1995.

- Kim, U., and Kaluarachchi, J.J.: Application of parameter estimation and regionalization methodologies to ungauged basins of the Upper Blue Nile River Basin, Ethiopia, *Journal of Hydrology* 362: 39–52, 2008.
- 855 Krasnostein, A. L., and Oldham, C. E.: Predicting wetland water storage, *Water Resources Research*, vol. 40, W10203, doi: 10.1029/2003WR002899, 2004.
- Liu, B.M., Collick, A.S., Zeleke, G., Adgo, E., Easton, Z.M., and Steenhuis, T.S.: Rainfall-discharge relationships for a monsoonal climate in the Ethiopian highlands, *Hydrological Processes* 22(7): 1059–1067, 2008.
- 860 McCartney, M., Alemayehu, T., Shiferaw, A., and Awulachew, S. B.: Evaluation of current and future water resources development in the Lake Tana Basin, Ethiopia. Colombo, Sri Lanka: International Water Management Institute. 39p. (IWMI Research Report 134). doi:10.3910/2010. 204, 2010.
- McWorter, D.B., and Sunada, D.K.: *Groundwater Hydrology and hydraulics*, Water Resources Publications, Ft. Collins.Co., 1997.
- 865 Mehta, V.K., Walter, M.T., Brooks, E.S., Steenhuis, T.S., Walter, M.F., Johnson, M., Boll, J., and Thongs, D.: Application of SMR to modeling watersheds in the Catskill Mountains, *Environmental Modeling and Assessment*. 9:77-89, 2004
- Dessie, M., Verhoest, N., Admasu, T., Pauwels, V., Poesen, J., Adgo, E., Deckers, J., and Nyssen, J.: Effects of the floodplain on river discharge into Lake Tana (Ethiopia), *Journal of Hydrology*, 519, Part A: 699-710, 2014. DOI: 10.1016/j.jhydrol.2014.08.007.
- 870 Melesse Temesgen, Savenije, H.H.G, Rockström, J, and Hoogmoed, W.B.: Assessment of strip tillage systems for maize production in semi-arid Ethiopia: Effects on grain yield, water balance and water productivity, *Physics and Chemistry of the Earth, Parts A/B/C* 47–48(0): 156-165, 2012a
- 880 Melesse Temesgen, Uhlenbrook, S., Simane, B., van der Zaag, P., Mohamed, Y., Wenninger, J., and Savenije, H.H.G: Impacts of conservation tillage on the hydrological and agronomic performance of Fanya juus in the upper Blue Nile (Abbay) river basin, *Hydrol. Earth Syst. Sci.*, 16, 4725–4735, 2012b.

- Miserez, A.: Soil erodibility and mapping in different hydrological land systems of Lake Tana basin, Ethiopia, M.Sc. thesis study, Department of Soil and Water Management, KULeuven, Leuven, Belgium, 2013.
- Mishra, A., Hata, T., and Abdelhadi, A.W.: Models for recession flows in the upper Blue Nile River, *Hydrological Processes* 18: 2773–2786, 2004.
- 885
- Mishra, A., and Hata, T.: A grid-based runoff generation and flow routing model for the upper Blue Nile Basin, *Hydrological Sciences Journal* 51: 191–206, 2006.
- Nash, J.E., and Sutcliffe, J.V.: River flow forecasting through conceptual models part I: a discussion of principles, *Journal of Hydrology* 10: 282–290, 1970.
- 890
- Poppe, L., Frankl, A., Poesen, J., Teshager Admasu, Mekete Dessie, Enyew Adgo, Deckers, J., and Nyssen, J.: Geomorphology of the Lake Tana basin, Ethiopia. *Journal of Maps*, Vol. 9, Iss. 3, DOI:10.1080/17445647.2013.801000, 2013
- Savenije, H. H. G.: HESS Opinions "Topography driven conceptual modelling (FLEX-Topo)", *Hydrol. Earth Syst. Sci.*, 14, 2681-2692, doi: 10.5194/hess-14-2681-2010,
- 895
- 2010.
- Scheerlinck, K., Pauwels, V. R. N., Vernieuwe, H., and Baets, B. De.: Calibration of a water and energy balance model: Recursive parameter estimation versus particle swarm optimization, *Water Resour. Res.*, 45, W10422, doi: 10.1029/2009WR008051, 2009.
- 900
- Setegn, S.G., Ragahavan, S., and Bijan, D.: Hydrological modelling in the Lake Tana Basin, Ethiopia using SWAT model, *The Open Hydrology Journal* 2: 49–62, 2008.
- Sivapalan, M.: The secret to 'doing better hydrological science': Change the question!, *Hydrol. Process.*, 23, 1391–1396, doi:10.1002/hyp.7242, 2009.
- 905
- Steenhuis, T.S., and van der Molen, W.H.: The Thornthwaite-Mather procedure as a simple engineering method to predict recharge, *Journal of Hydrology* 84: 221–229, 1986.
- Steenhuis, T. S., Collick, A. S., Easton, Z. M., Leggesse, E. S., Bayabil, H. K., White, E. D., Awulachew, S. B., Adgo, E., and Ahmed, A. A.: Predicting discharge and erosion for the Abay (Blue Nile) with a simple model, *Hydrol. Process.* 23, 3728–3737, 2009.
- 910

- 915 Tekleab, S., Uhlenbrook, S., Mohamed, Y., Savenije, H.H.G, Temesgen, M., and
Wenninger, J.: Water balance modeling of the upper Blue Nile catchments using a
top-down approach, *Hydrology and Earth System Science* 15: 2179–2193. DOI:
10.5194/hess-15-2179, 2011.
- Tilahun, S. A., Guzman, C.D., Zegeye, A.D., Engda, T.A., Collick, A.S., Rimmer, A.,
and Steenhuis, T.S.: An efficient semi-distributed hillslope erosion model for the
subhumid Ethiopian Highlands, *Hydrol. Earth Syst. Sci.*, 17, 1051–1063, 2013,
doi: 10.5194/hess-17-1051-2013, 2013.
- 920 Uhlenbrook, S., Mohamed, Y., and Gragne, A.S.: Analyzing catchment behavior through
catchment modeling in the Gilgel Abay, Upper Blue Nile River Basin, Ethiopia,
Hydrol. Earth Syst. Sci., 14, 2153–2165, doi: 10.5194/hess-14-2153-2010, 2010.
- Vogel, R.M., and Kroll, C.N.: Regional geohydrologic-geomorphic relationships for the
estimation of low-flow statistics, *Water Resources Research* 28(9): 2451–2458,
925 1992.
- Wale, A., Rientjes, T.H.M., Gieske, A.S.M., and Getachew, H.A.: Ungauged catchment
contributions to Lake Tana’s water balance, *Hydrological Processes* 23: 3682–
3693, 2009.
- Wittenberg, H.: Base flow recession and recharge as nonlinear storage processes, *Hydrol.*
930 *Process.* 13, 715-726, 1999.

935

940

Figure captions

945

Fig. 1. The Upper Blue Nile basin and the Lake Tana sub-basin (a) and the study catchments and the gauging stations in the Lake Tana sub-basin georeferenced on the SRTM DEM (b)

950

Fig. 2. The modeling approach showing (a) divisions of a catchment into different runoff production areas, (b) conceptual model configuration of the soil surface at an outlet of a catchment and (c) Inflows and outflows for the soil reservoir when the soil water storage capacity is (i) below field storage capacity, (ii) greater than field storage capacity and (iii) greater than the maximum soil water storage (after Krasnostein and Oldham, 2004).

955

Fig. 3. Typical surfaces with poor infiltration on hillslopes in the Gumara catchment: (a) shallow soil overlying bedrock, and (b) plough pan with typical plough marks. The occurrence of high runoff response on these surfaces is evidenced by the presence of rill erosion (Photos: Elise Monsieus)

Fig. 4. The three slope categories for the Gilgel Abay and Gumara catchments

960

Fig. 5 Major soil types in the Lake Tana basin and the study catchments

Fig.6. Soil depth in the Lake Tana basin and the study catchments

Fig.7. Location map of rainfall stations for the study catchments

Fig.8. Stage-Discharge relationship (Rating curves) for Gilgel Abay at Picolo and Gumara at Wanzaye Stations

965

Fig.9. Comparison of predicted and observed discharge and precipitation of the Gumara and the Gilgel Abay catchments for the calibration period

Fig.10. Predicted and observed discharges and precipitation of the Gumara and the Gilgel Abay catchments for the validation period

970

Fig.11. Predicted and observed flow duration curves of the Gumara and the Gilgel Abay catchments for the calibration period

Fig.12. Predicted and observed flow duration curves of the Gumara and the Gilgel Abay catchments for the validation period

Fig.13. One of the springs in Gilgel Abay catchment used as a water supply source for Bahir Dar town

975 **Fig.14.** Local model parameter sensitivity analysis for Gumara catchment. Parameters are explained in Table 2

Fig.15. Global model parameter sensitivity analysis results for Gumara catchment. Parameters are explained in Table 2

980

Tables

985 Table 1. Input data on topography, soil and saturated hydraulic conductivities for the study catchments as classified into different hydrological regimes using topography

Catchment	Slope class	Average slope (%)	Coverage from the total area (%)	Average Soil depth (m)	Dominant soil texture	Porosity	Field capacity	Saturated hydraulic conductivity $K_{s,e}$ (m/s)
Gilgel Abay	Level ($\leq 8\%$)	3.4	54	0.92	clay	0.46	0.36	9.26×10^{-8}
	Hilly ($8\% < \text{slope} \leq 30\%$)	15.9	38	1.29	Clay to clay loam	0.42	0.32	
	Steeply ($>30\%$)	41.4	8	1.49	Clay loam to Silty loam	0.4	0.26	
Gumara	Level ($\leq 8\%$)	4.0	24	1.5	clay	0.46	0.36	1.16×10^{-8}
	Hilly ($8\% < \text{slope} \leq 30\%$)	17.2	60	1.24	Loam , Silty clay	0.42	0.26	
	Steeply ($>30\%$)	41.5	16	1.2	Sandy loam	0.25	0.1	

990

995

Table 2. Model parameters, their ranges, and calibrated values found in 2500 iterations in the PSO calibration

1000

Parameter	Explanation	units	Minimum	Maximum	calibrated values		Average value of both catchments
					Gumara	Gilgel Abay	
β	parameter to account variability of permeability of soil with soil water storage	–	1	3	2.445	2.314	2.380
k1	relates discharge and storage for the ground water	–	0.1	2	0.971	1.012	0.992
$K_{s,u}$	Saturated hydraulic conductivity in the upper soil layer	m/s	0.001	0.1	0.016	0.05	0.033
γ	parameter to account variability of deep percolation with soil water storage	–	0.5	2	1.409	0.9	1.155
λ	coefficient that represents part of catchment that is impermeable	–	0.05	0.5	0.149	0.173	0.161
α_1	interflow partitioning coefficient for the steep slope surface	–	0.05	0.8	0.653	0.575	0.614
α_2	interflow portioning coefficient for the medium slope surface	–	0.05	0.8	0.065	0.152	0.109

1005

1010

1015

1020

Table 3. Statistical comparison and model performance of the modelled and observed river discharge (Q) for the two catchments

		Model performance indicators					
		Mean Q [mm/day]	Standard Deviation [mm/day]	RMSE ¹ [mm/day]	NSE ^{2*}	R ²	PBIAS ³
Observed data	Gumara						
	calibration (2011-2012)	2.31	3.79	—	—	—	—
	validation (2000-2005)	2.3	3.75	—	—	—	—
	Gilgel Abay						
	calibration (2012)	3.89	5.05	—	—	—	—
	validation (2000-2005)	2.33	3.4	—	—	—	—
Wase - Tana model	Gumara						
	calibration (2011-2012)	2.37	3.56	1.34	0.86	0.86	3.30
	validation (2000-2005)	1.95	3.05	1.37	0.78	0.8	-11.75
	Gilgel Abay						
	calibration (2012)	3.85	4.7	1.85	0.84	0.85	-21.61
	validation (2000-2005)	3.14	3.71	1.67	0.7	0.8	34.06
SWAT model	Gumara						
	calibration (2011-2012)	1.91	3.33	1.55	0.77	0.78	-17.50
	validation (2000-2005)	1.62	3.11	1.63	0.72	0.75	-29.48
	Gilgel Abay						
	calibration (2012)	2.02	3.20	1.40	0.60	0.79	-44.01
	validation (2000-2005)	2.45	3.86	2.30	0.55	0.63	5.45
Flex_B model	Gumara						
	calibration (2011-2012)	2.43	3.64	1.54	0.82	0.82	5.30
	validation (2000-2005)	2.01	3.35	1.47	0.80	0.81	-12.67
	Gilgel Abay						
	calibration (2012)	3.81	4.03	1.62	0.80	0.84	5.64
	validation (2000-2005)	4.13	4.33	2.15	0.50	0.75	77.67

1025 1. *RMSE* : Root Mean Squared Error as defined in Equation (22)

2*. *NSE* : Nash-Sutcliffe Efficiency as defined in Equation (23)

3. *PBIAS*: Percentage Bias as defined in Equation (25)

1030

1035

Table 4. Model results on the hydrograph components of the catchments

Runoff components	unit	For the calibration period		For the validation period	
		Gumara	Gilgel Abay	Gumara	Gilgel Abay
Total mean annual runoff predicted (Q_{pr})	mm/year	864	1405	713	1146
Total mean annual runoff observed (Q_{ob})	mm/year	843	1420	841	938
Mean annual surface runoff (Q_{se})	mm/year	161	280	129	234
	% from the total Q_{pr}	19	20	18	20
Mean annual interflow (Q_{ss})	mm/year	574	508	458	369
	% from the total Q_{pr}	66	36	64	32
Mean annual baseflow (Q_2)	mm/year	128	617	126	548
	% from the total Q_{pr}	15	44	18	48

1040

Table 5. Comparison of model performance between the optimal and average model parameters of the three catchments

catchment		Model performance for the optimal model parameters			Model performance for the average of the optimal model parameters of the two catchments		
		RMSE [mm/day]	<i>NSE</i>	R^2	RMSE [mm/day]	<i>NSE</i>	R^2
Gumara	Calibration period	1.34	0.86	0.86	1.48	0.84	0.86
	Validation period	1.37	0.78	0.80	1.82	0.76	0.77
Gilgel Abay	Calibration period	1.85	0.84	0.85	1.98	0.83	0.84
	Validation period	1.67	0.70	0.80	1.93	0.68	0.78
Dirma	For the 2012 discharge	-	-	-	1.79	0.58	0.60

1045

1050

Figures

1055

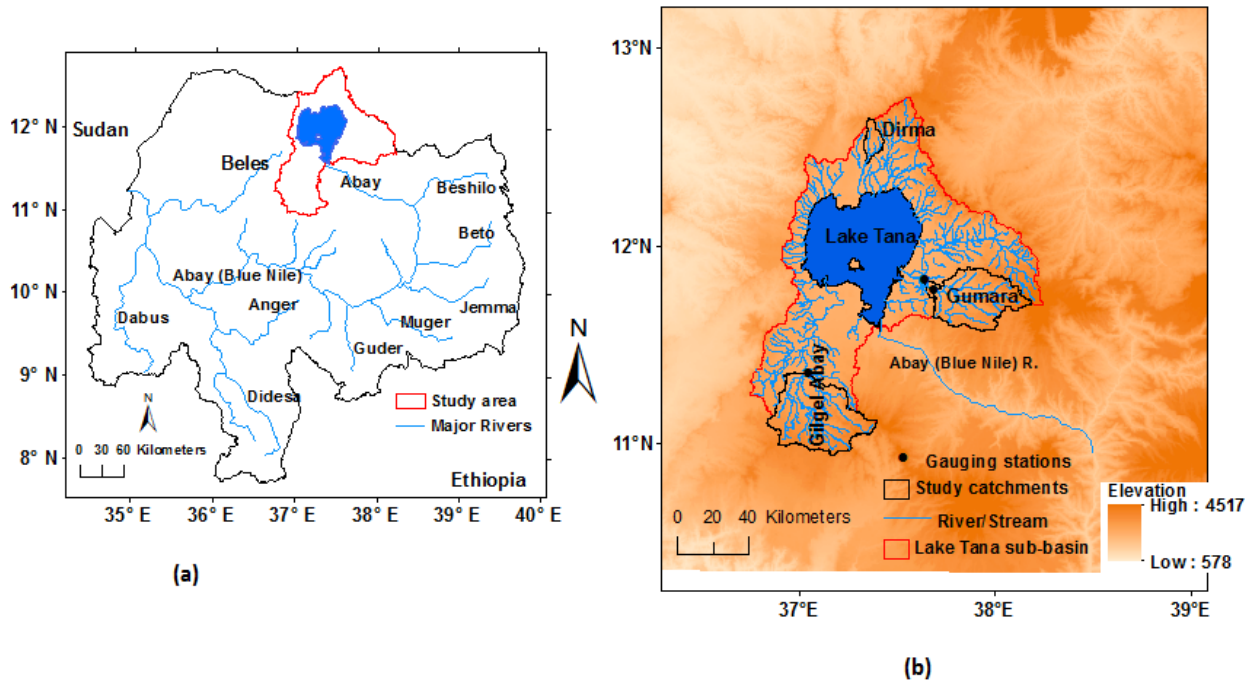


Fig. 1. The Upper Blue Nile basin and the Lake Tana sub-basin (a) and the study catchments and the gauging stations in the Lake Tana sub-basin georeferenced on the SRTM DEM (b)

1060

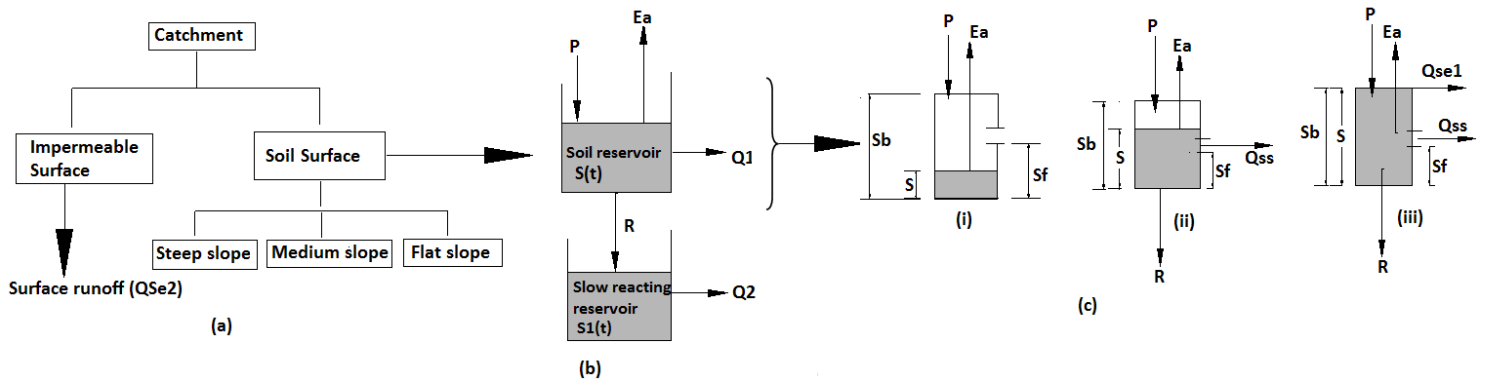
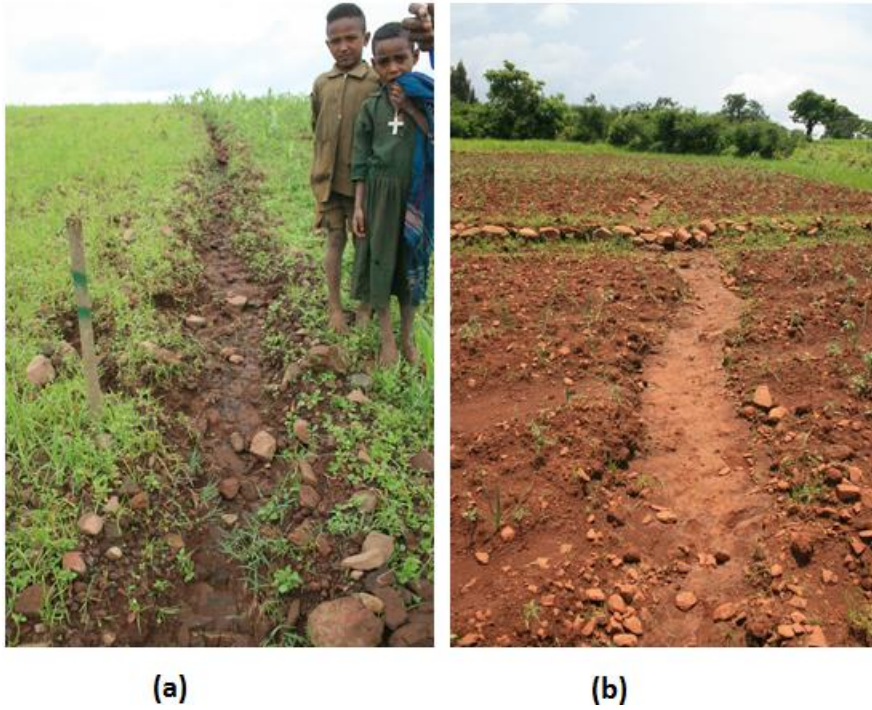
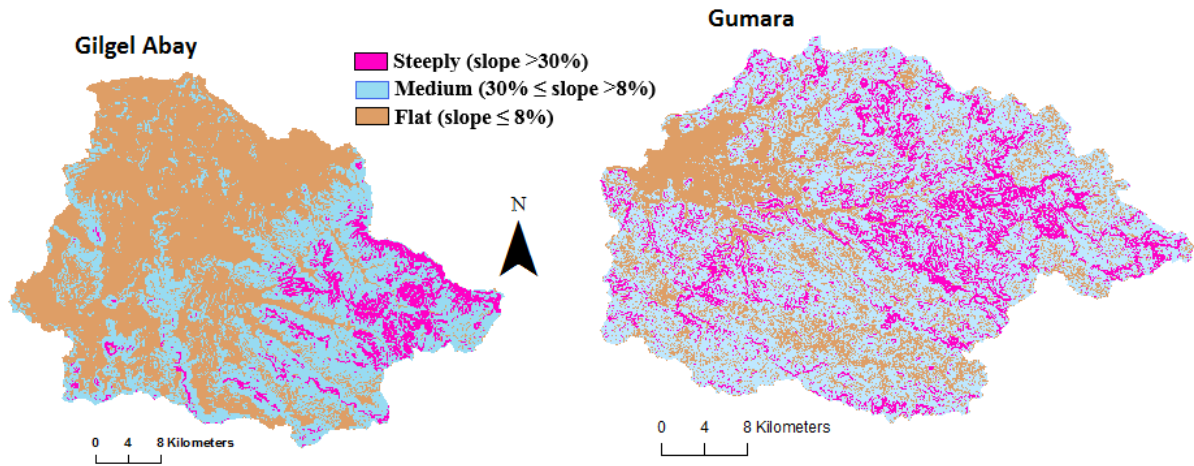


Fig.2. The modeling approach showing (a) divisions of a catchment into different runoff production areas, (b) conceptual model configuration of the soil surface at an outlet of a catchment and (c) Inflows and outflows for the soil reservoir when the soil water storage capacity is (i) below field storage capacity, (ii) greater than field storage capacity and (iii) greater than the maximum soil water storage (after Krasnostein and Oldham, 2004).

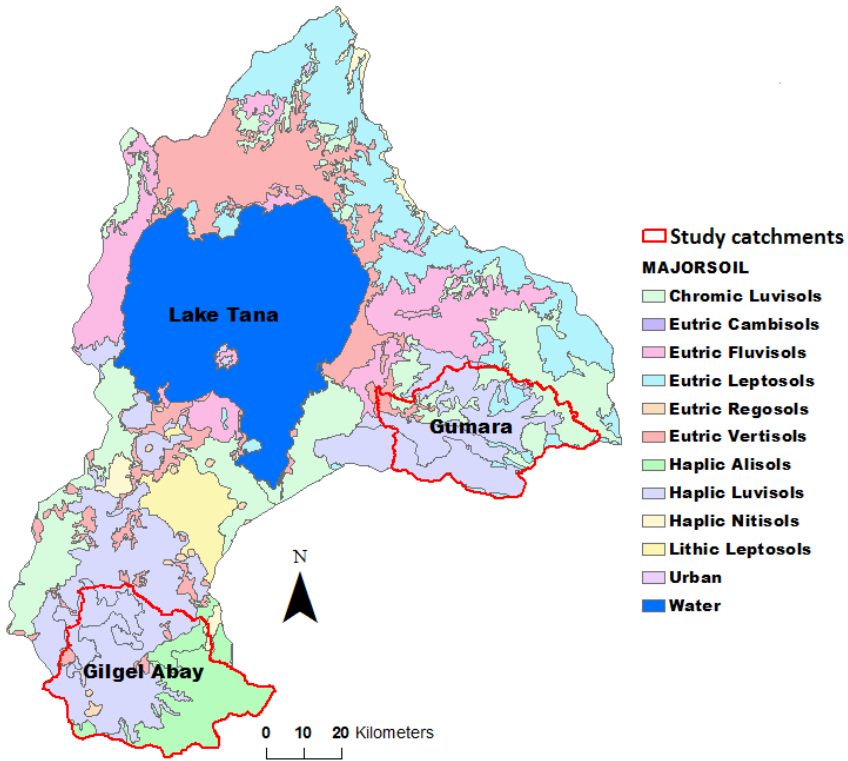
1065



1070 **Fig. 3.** Typical surfaces with poor infiltration on hillslopes in the Gumara catchment: (a) shallow soil overlying bedrock, and (b) plough pan with typical plough marks. The occurrence of high runoff response on these surfaces is evidenced by the presence of rill erosion (Photos: Elise Monsieus)



1075 **Fig.4.** The three slope categories for the Gilgel Abay and Gumara catchments



1080 **Fig.5.** Major soil types in the Lake Tana basin and the study catchments

1085

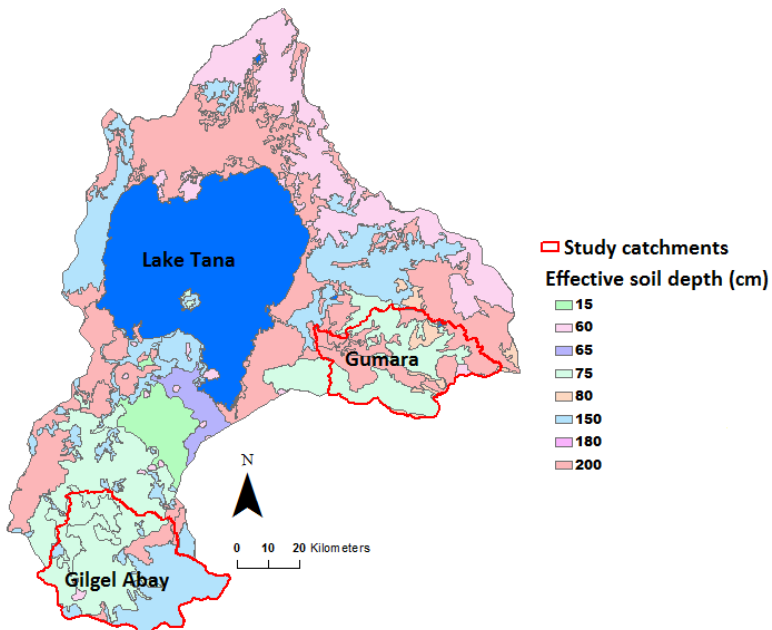
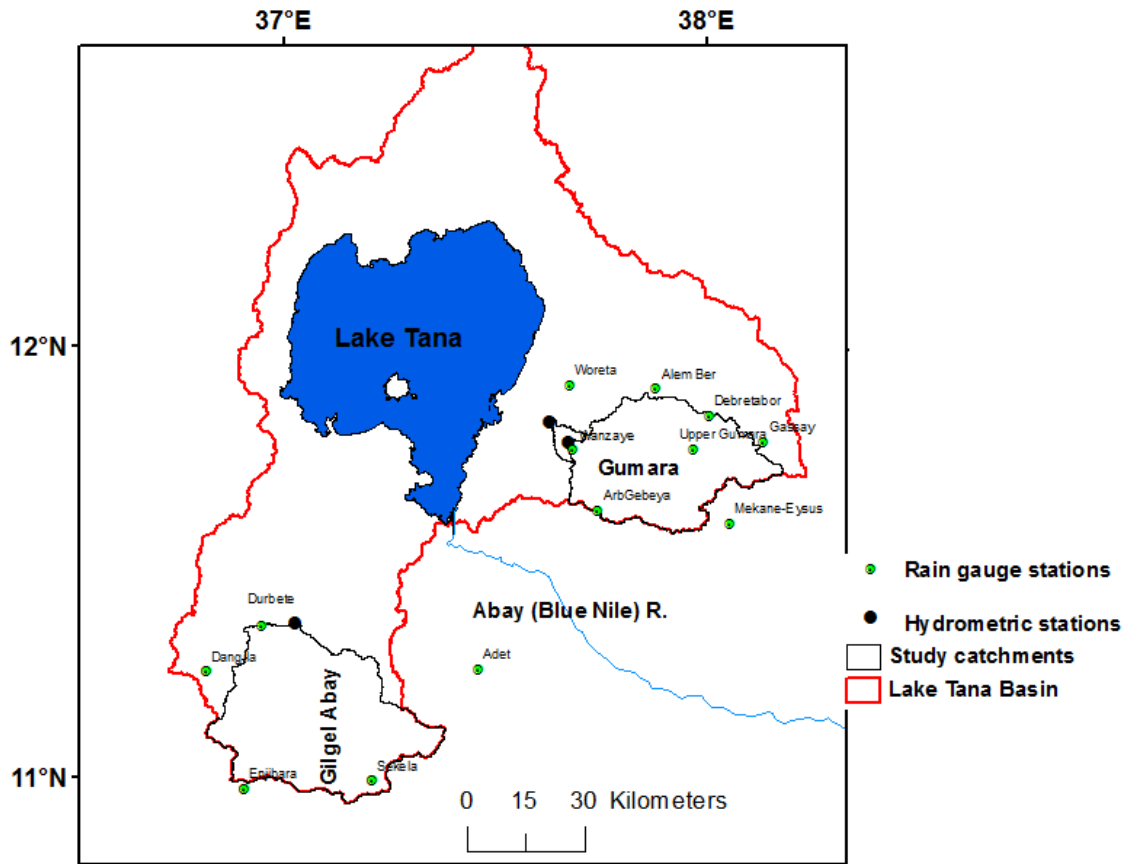
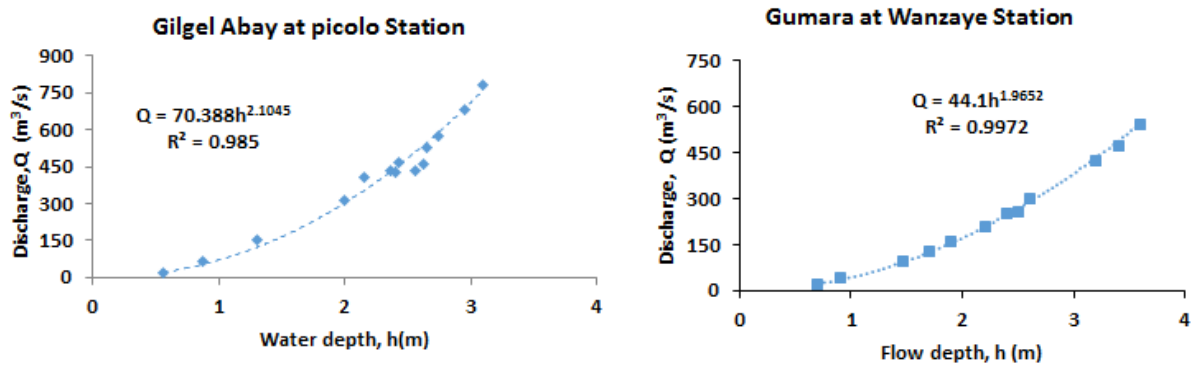


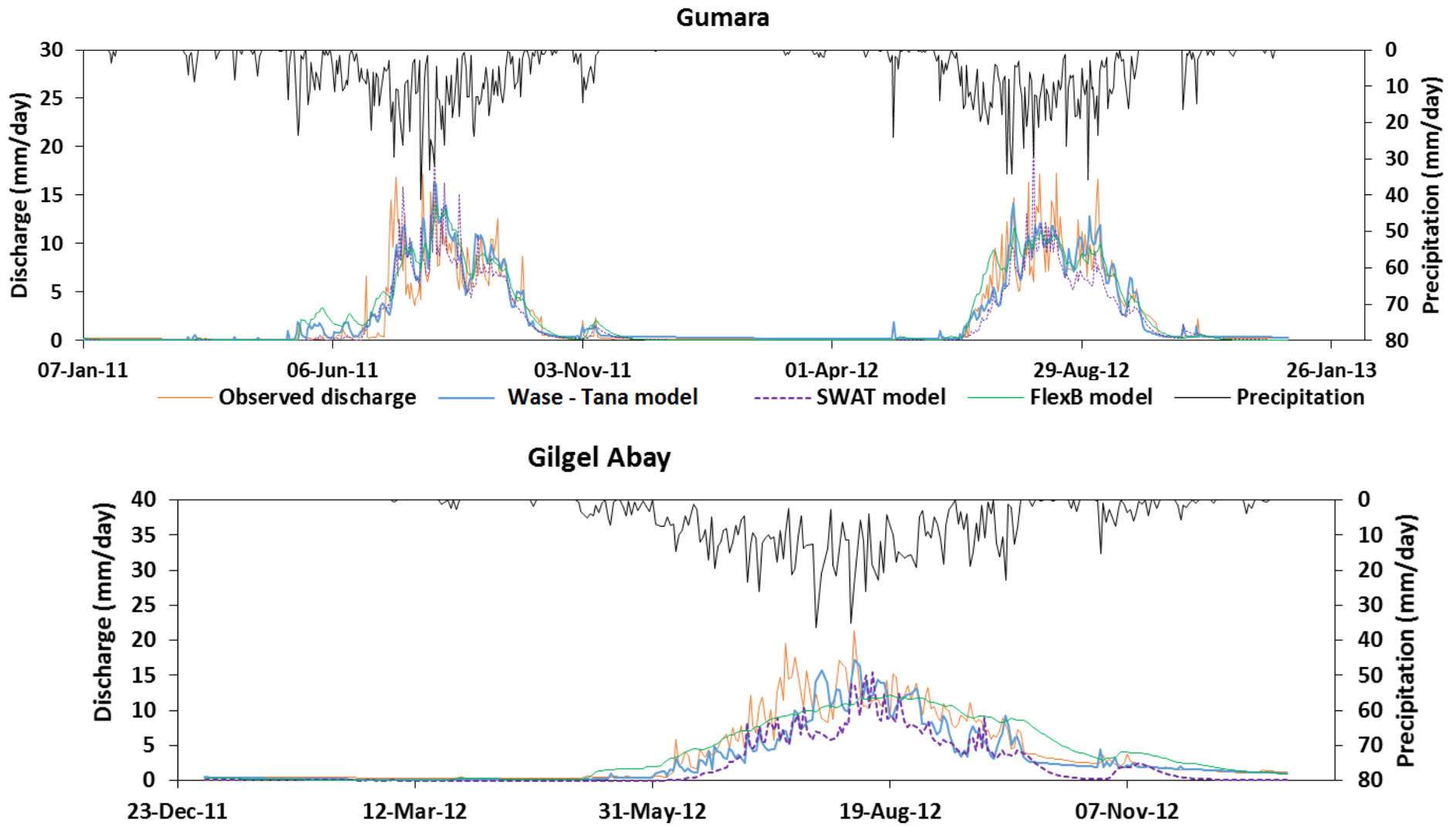
Fig.6. Soil depth in the Lake Tana basin and the study catchments



1090 **Fig.7.** Location map of rainfall stations for the study catchments



1095 **Fig.8.** Stage-Discharge relationship (Rating curves) for Gilgel Abay at Picolo and Gumara at Wanzaye Stations



1100 **Fig. 9.** Comparison of predicted and observed discharge and precipitation of the Gumara and the Gilgel Abay catchments for the calibration period

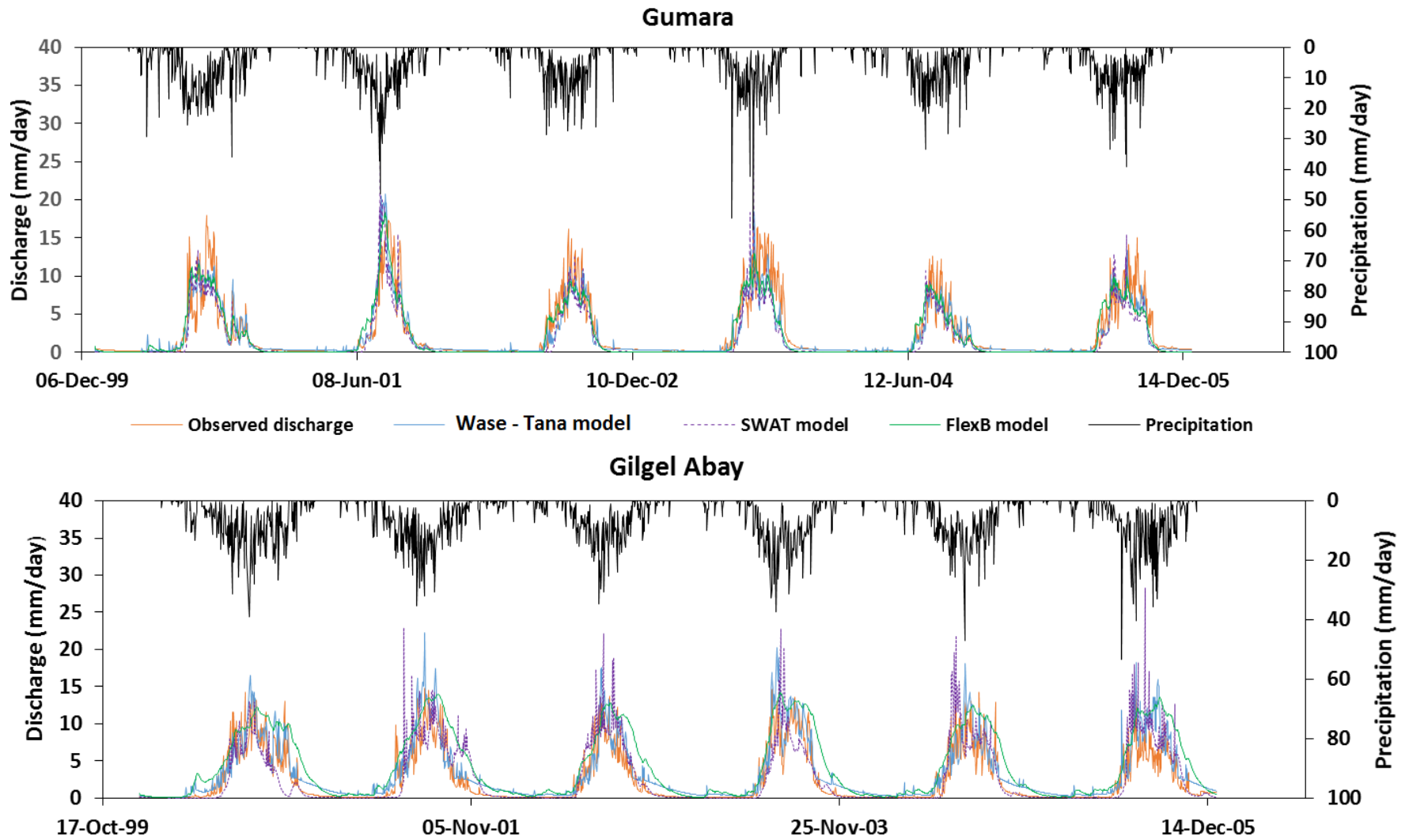
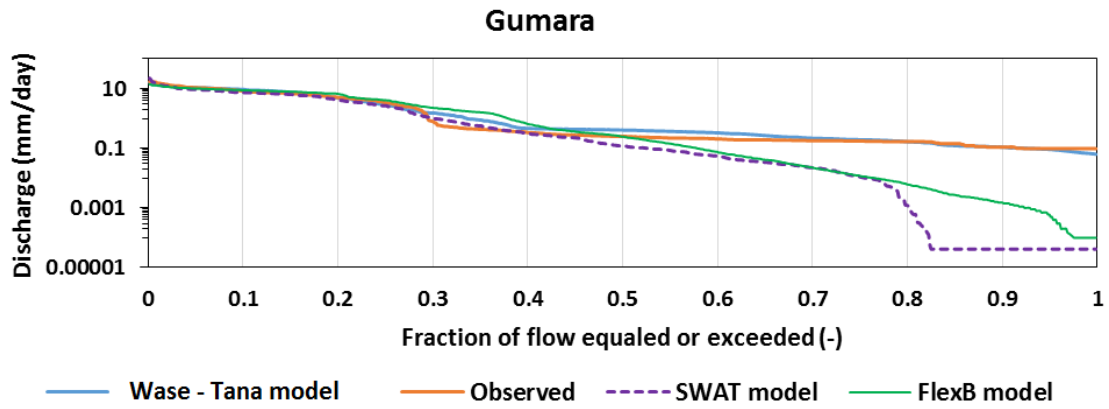


Fig.10. Predicted and observed discharges and precipitation of the Gumara and the Gilgel Abay catchments for the validation period



1105

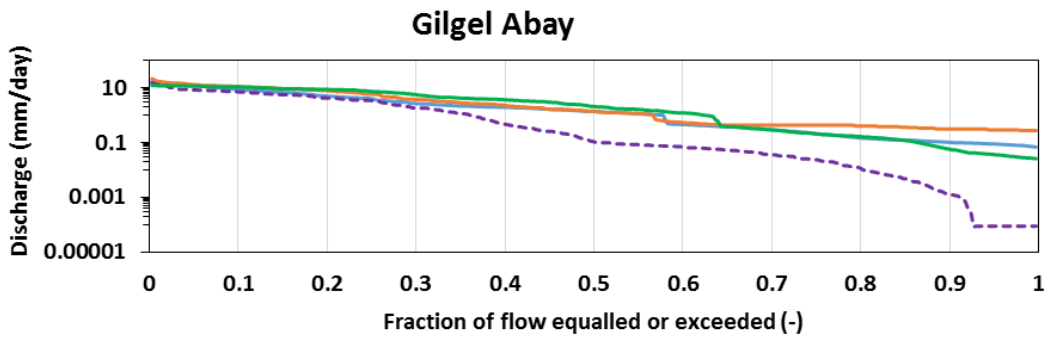
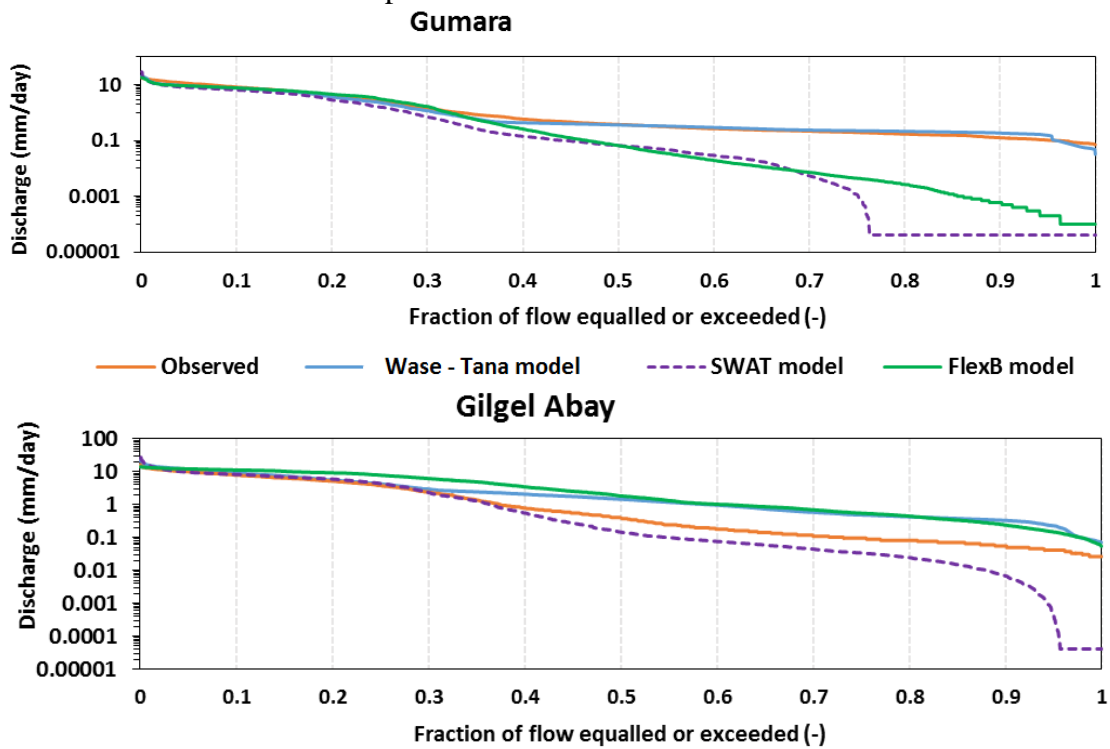


Fig. 11. Predicted and observed flow duration curves of the Gumara and the Gilgel Abay catchments for the calibration period



1110

Fig.12. Predicted and observed flow duration curves of the Gumara and the Gilgel Abay catchments for the validation period



Fig.13. One of the springs in Gilgel Abay catchment used as a water supply source for Bahir Dar town

1115

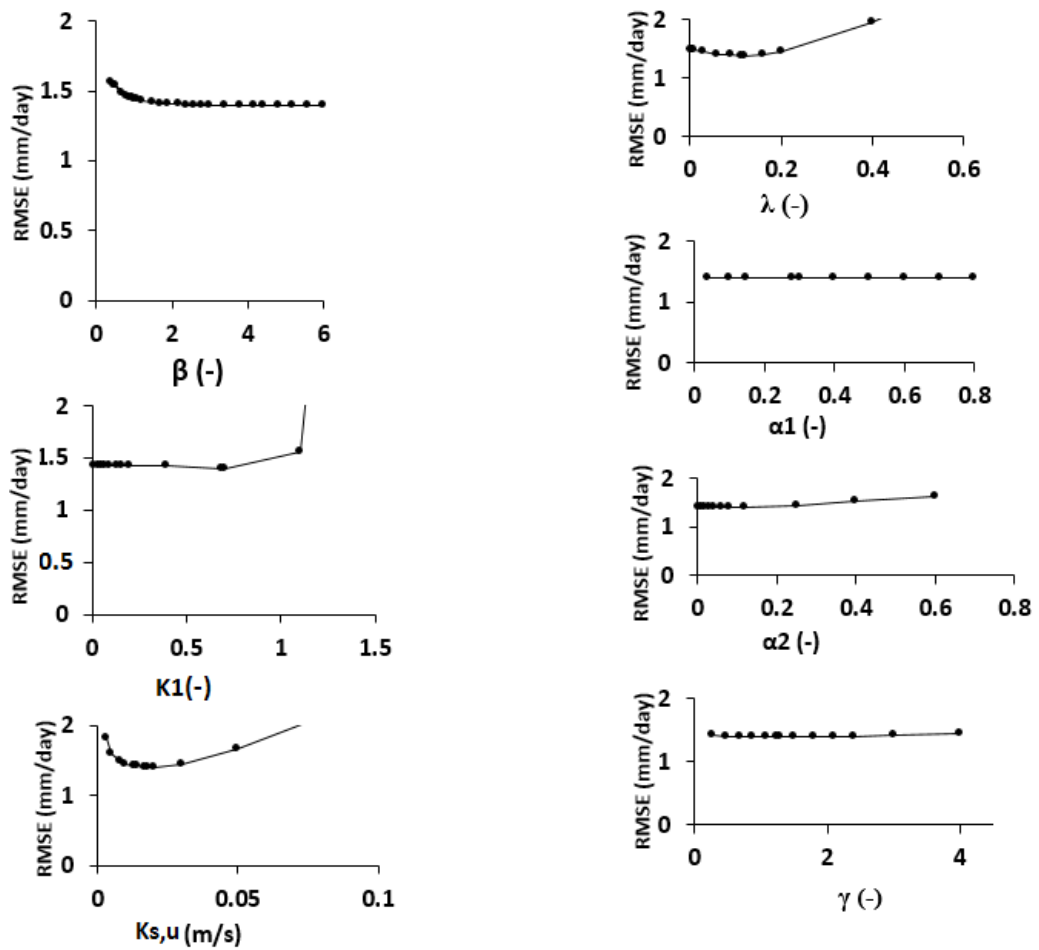
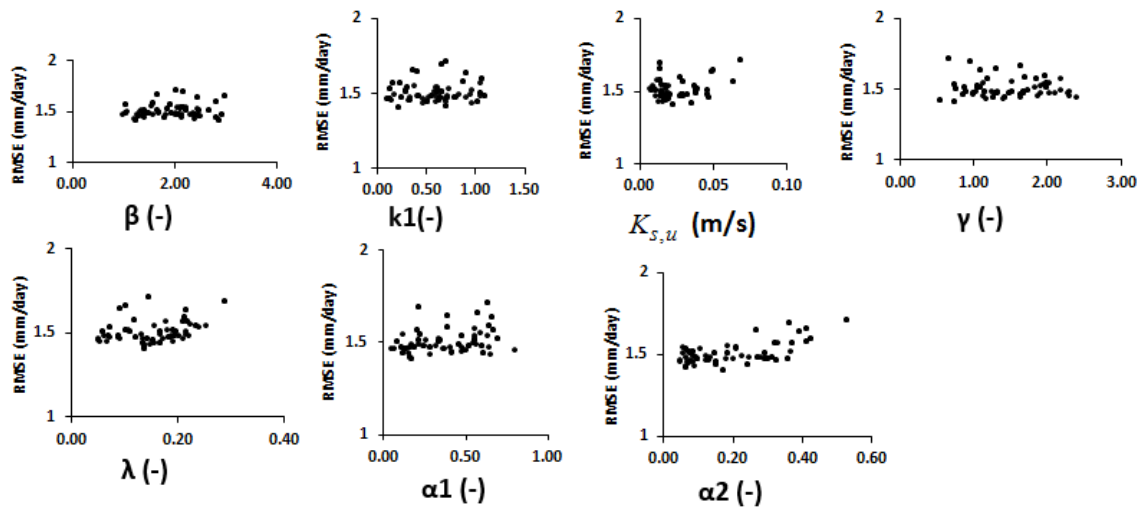


Fig. 14. Local model parameter sensitivity analysis for Gumara catchment. Parameters are explained in table 2.



1120

Fig.15. Global model parameter sensitivity analysis results for Gumara catchment. Parameters are explained in table 2.