

Reply to Referee: M. Hrachowitz

In the following please find the corrections and comments to the referee's response. For clarity, the comments of the referee were copied in black and our comments are in blue.

Sections taken from the updated manuscript are shown in *italic*. Now deleted parts are ~~crossed-out~~ and newly added parts are underlined.

General comment:

This is a very interesting and well developed paper. The only real concerns I am having is that the limitations of the Richards equation based model is only discussed very late in the manuscript and that the referencing could be more detailed, as there are quite some rather recent studies that address and discuss exactly these limitations of the Richards equation (i.e. the assumption of a continuum and thus the omission of preferential flow paths), using different modelling strategies. Apart from that I would be very happy to see this manuscript eventually published. Please find below my detailed comments.

General replies:

We gratefully acknowledge the recommendations of the reviewer and thank him for is positive feedback and the constructive input he has provided to further improve our manuscript. The possible limitations of the Richards equation now have been addressed in an early phase of the manuscript (section 2.5.1 previously 2.6.1) and a series of further recent studies has been included. In addition we thoroughly incorporated his detailed comments as shown in the following section and thank him once more for all his effort.

Detailed comments:

Page 5181

- 1) Line 7 and elsewhere: in science (except for mathematics) verification is extremely problematic. The most that can usually be done is to test hypotheses and falsify them. Thus please avoid terms such as "verify".

The appropriate sections have been changed in order to

E.g. the section including Line 7 & 9 reads now as follows:

Quantitative data on storage change in this regard are only suitable to account for the actual change in soil water volume, but not to ~~assess~~ verify the source or flow direction. Knowing tracer compositions of relevant hydrological components along a hillslope allows to account for ~~predict~~ the mixing processes and thereby to ~~verify~~ delineate the actual source of the incoming water.

- 2) Line 9: unfortunately we are not yet far enough to be able to predict mixing processes. Please rephrase

Wording has been changed see remarks of point 1 for actual changes.

- 3) Lines, 1.25-29: what about Kirchner et al. (2001)? They could plausibly show that advection-dispersion processes can be responsible for observed tracer signals along hillslopes.

The approach presented by Kirchner et al. (2001) and their results fall within the category of models which currently use strong simplifications to represent the 2-D or

3-D flow processes within a catchment. Due to its more conceptual approach it has its own justification and within the intended scope delivers reliable results. Nevertheless we believe that the chosen reference to the TAC^D model, with its more physically based nature, presented by Uhlenbrook et al. (2004) serves as a better comparison for our study.

Page 5182

- 4) Line 17: what do you mean by a “constrained model”?

Reviewing the common scientific meaning of “constrained model”, we see that it is generally used in a different context. To avoid possible mix-up, we changed the wording in the relevant section, which now reads:

Hence, it is tempting to investigate the suitability of isotope tracers to delineate hydrological flow paths using a more physical modeling approach. Recent research in this direction includes the work of McMillan et al. (2012) and Hrachowitz et al. (2013) using chloride as a tracer to study the fate of water in catchments in the Scottish Highlands. Even though some processes affecting the soil water isotope transport are still represented in a simplified manner or could be, due to their limited effect/importance of the respective process within the given study site, omitted, this approach allows us to determine the potential of soil water isotope modeling in catchment hydrology and highlight future need for research.

- 5) Lines 17-20: perhaps include McMillan et al. (2012) and Hrachowitz et al. (2013) as they did exactly that on the catchment scale.

The references to the work presented by McMillan et al. (2012) and Hrachowitz et al. (2013) is now included in the according section as a reference to similar work down in the Scottish Highlands using chloride as a tracer. See reply to point 4.

Page 5183

- 6) Line 6: please define “presaturated”

“presaturated” meaning, that the soil was saturated prior to the rainstorm (Boy et al., 2008, p. 1217). We revised this section while omitting the term ‘presaturated’:

Studies on the micro scale (Boy et al., 2008; Goller et al., 2005), supported by solute data and end member mixing analysis at the meso scale (Bücker et al., 2011; Crespo et al., 2012), showed that fast ‘organic horizon flow’ in forested catchments dominates during discharge events, if the mineral soils are water saturated prior to the rainfall.

- 7) Line 9: is the “organic horizon flow” matrix or preferential flow dominated?

The “organic horizon flow” is mostly preferential flow taking place above the mineral soil layer in the relatively loose structure of the organic horizon showing a lot of interconnected pore space, due to the high microbiological activity.

- 8) Line 15: how was the saturated hydraulic conductivity measured? If it was from a soil core sample (i.e. relatively small size) that it should be noted that it is likely not to represent the effective hydraulic conductivity that would also to some degree account for preferential flow (as the sample would be too small to get a representative

distribution of these flow paths, e.g. macropores) but rather merely the matrix conductivity.

To clarify the sampling method we now included the following section, and discarded again the use of the term presaturated:

The reported K_{sat} values are based on measurements of 250 cm³ undisturbed soil core samples vertically extracted from the center of each respective layer. Due to the chosen sampling method and the limited size of the soil cores the effective saturated hydraulic conductivity will be even higher and can vary for the horizontal flow component. When and to which extent a subsurface saturated prior the rainfall event under investigation would still trigger surface runoff on pastures therefore remains to be investigated.

- 9) Lines 28-29: 2.1 and 3.9 years are by no means “long” mean transit times. I suppose you wanted to say that they are longer than the MTT of faster flow paths. Please tone down.

We added “*in comparison to the fast runoff reaction times*” to put the time span in a better perspective:

These findings are also supported by the long mean transit time (MTT) of the base flow for different sub-catchments of the Rio San Francisco in comparison to the fast runoff reaction times, varying according to Timbe et al. (2014) between 2.1 and 3.9 years.

Page 5184

- 10) Lines 8-11: I do not agree with this statement as you essentially only exchange one information for another one. In other words, here the model is calibrated to observed soil water composition while in many other modelling attempts, models are calibrated to some measures of flow or other observed storage changes. Here you do not have much indication if the model actually reproduces flow in a meaningful way. One could only be more confident about the model if it was able to reproduce both, flow and tracers. Thus please omit this statement

Yes the source of information was exchange – going from the storage state of the soil water compartment (soil water volume) to the isotope concentration of this compartment. Nevertheless the quality of this information is higher, due to the necessity to mix the right volumes with the right concentration to get the correct signature. Whereas the right volume can be archived by mixing any source of water independent of its concentration. Similar to mixing a color chart the tone and volume need to be aligned.

To clarify this point we added the following section:

Replacing the calibration target bears now the necessity to mix the right amount and signature of any given flow component, whereas the quantitative change only relies on the actual amount of water leaving or entering any given compartment.

- 11) Lines 27 and elsewhere: I suppose you refer to Hortonian overland flow here (as opposed to saturation overland flow). Please clarify.

Indeed we refer to Hortonian overland flow. The necessary changes were made in the relevant sections.

E.g. hypothesis 3 reads now:

Due to the high saturated conductivities of the top soil layers the occurrence of Hortonian overland flow ~~surface runoff~~ is unlikely to have an important contribution to the observed flows (Crespo et al., 2012)

- 12) I found the introduction in general a bit too long and too detailed. Some parts of it would better fit into study area or methods sections. I would thus encourage you to shorten and revise this section.

We agree with the reviewer and shortened the introduction by moving a part of the text into a new section “2.3 Current process understanding at the catchment scale”. The new section now contains all the previous findings describing the hydrological processes at the catchment scale, which later serve as a reference for the results of the new modeling approach.

To our feeling the introduction of greatly benefited from those changes and is now easier to read and the key messages of the chosen approach are now presented in a clearer more condensed way.

- 13) Methods section: no mention is made of the precipitation sampling strategy. Thus please add sampling method, sampling frequency and length of sampling period. In addition, was fractionation considered in the precipitation samples?

We included the missing description of the sampling strategy. The respective section (following L. 17 P. 5186) now contains the following description:

Isotopic forcing data was collected manually for every rainfall event from Oct 2010 until Dec 2012 using a Ø25 cm funnel located in close proximity of the chosen hillslope at 1900 m a.s.l. (Timbe et al., 2014). To prevent any isotopic fractionation after the end of a single rainfall event (defined as a period of 30min without further rainfall) all samples were directly sealed with a lid and stored within a week in 2mL amber glass bottles for subsequent analysis of the isotopic signature as described in section 2.4.1 (all samples <2ml were discarded).

Page 5188

- 14) Section 2.6.1: I think it would be beneficial for the manuscript if you already here included a statement of the limitations of the Richards equation (i.e. preferential flow not accounted for) because this has also consequences for the interpretation as a completely mixed assumption will not hold for most systems where preferential flow is relevant (i.e. in a simplistic way the problem could be approached as a “Dual flow domain”) as preferential flow is not a continuous process and thus alters the mixing process according to antecedent wetness. Thus please include Brooks et al. (2009) and Hrachowitz et al. (2013) who show the importance of temporally varying mixing processes. In addition, it would be good to bring this into wider context with previous work (e.g. Weiler and Naef, 2003; Van Schaik et al., 2008; Vogel et al., 2008; Legout et al., 2009; Koeniger et al., 2010; Stumpp and Maloszewski, 2010; McDonnell and Beven, 2014)

We agree with the reviewer, that this would be a good point to lead the reader in this direction at the beginning of the method section and therefore now included the following in the end of section 2.5.1 (previously 2.6.1):

Starting with Beven and Germann (1982) scientist over the last decades frequently argued that Richards equation like flow accounting equation assuming a time invariant and well mixed homogenous flow of water through

the soil pore space, similar to those currently implemented in CMF, are not suitable to account for preferential flow relevant for modeling tracer transport (Brooks et al., 2010; Germann et al., 2007; Hrachowitz et al., 2013; Stumpp and Maloszewski, 2010). Being developed for the quantitative representation of soil water flow this equations cannot distinguish between water stored in different soil compartments (namely the soil matrix and macro pores) and only artificially try to represent macropore flow e.g. by favoring high saturated conductivity values or misshaped conductivity curves controlling the flow of water between soil compartments. Even though the capabilities of CMF to account for preferential flow are still in the development phase (e.g. by following the dual permeability approach in the future) and are not accounted for in the presented setup, our setup will once more highlight potential drawbacks of the modeling approaches relying on Richards equation while modeling tracer transport at the hillslope scale.

Page 5191

- 15) Lines 3-5; Table 4: are these the prior parameter distributions? Are they uniformly distributed? Please clarify

In accordance with the Latin-Hyper cube method presented by McKay et al. (1979) the parameter distribution was assumed to be uniform-distributed. See P. 5190 L. 28:

The parameter range of each variable was therefore subdivided into 10 strata and sampled once using uniform distribution.

To further clarify this, the caption of Table 4 now reads:

Tab. 4 Soil parameter ranges for the Monte Carlo simulations (assuming uniform distribution for each parameter).

- 16) Line 17: please specify more clearly “best” parameter sets. Are these all retained as behavioural? Or just a sub-set?

We refer to the same sub-set of all model runs previously defined as best performing (“behavioral”) models (P. 5191 L. 9-11). To further clarify this the respective sentences now reads:

The parameter sets best representing the isotope dynamics of $\delta^2\text{H}$ (as previously defined as best performing (“behavioral”) parameter sets; same accounts for $\delta^{18}\text{O}$; results are not shown) during the calibration period, explained the observed variation to even a higher degree during the validation period (average NSE 0.19 for calibration versus 0.35 for validation).

- 17) Line 25; Figure 3: is “level” here equivalent to depth below ground? Please clarify. Are these really confidence intervals or merely the 2.5/97.5 percentiles of all values from the behavioural parameters? If yes, how were the confidence intervals calculated? Was some kind of weight or likelihood measure applied (e.g. Freer et al., 1996)?

Indeed we refer to the depth below ground. The captions of Figure 3 were adapted accordingly to further clarify this:

Figure 3 Time series of soil water isotope signatures (Top panels 1-3 for each elevation) for all behavioral model runs with: $\text{NSE} > 0.15$, $\text{bias} < \pm 20.0 \text{ ‰ } \delta^2\text{H}$

and $R^2 > 0.65$ showing the 95% confidence interval (CI; transparent areas) and best modeled fit (solid line) vs. measured values (circles) at all 3 elevations (2,010, 1,949 and 1,904 m a.s.l.) and soil depths below ground (0.10, 0.25 and 0.40 m). Bottom panels 4 and 5, isotopic signature and rainfall amount, respectively.

The confidence interval was calculated using the python numpy and scipy packages assuming normal distribution while calculating the standard deviation based on the following mathematic formulation:

$$\left[\bar{x} - t \left(1 - \frac{\alpha}{2} \right) \frac{\sigma}{\sqrt{n}}; \bar{x} + t \left(1 - \frac{\alpha}{2} \right) \frac{\sigma}{\sqrt{n}} \right]$$

σ = standard deviation

\bar{x} = mean value of all behavioral model runs

t = T-distribution

n = number of behavioral model runs

α = level of significance

No additional likelihood measures in the style of Freer et al. (1996) were applied.

Page 5192

- 18) Lines 9ff: I think it may be a good idea to tone the discussion of hypothesis I down a bit, as the given interpretation remains a bit speculative. For example, the effect of different mixing processes in the soil together with the presence of preferential flow paths could have introduced compensatory errors in the model, which may also propagate into the representation of evaporation.

Given the limitations of this study we agree that the current interpretation is a bit strong. We therefore adapted the respective section to put our findings in the correct perspective:

Our first hypothesis I, that evaporation in general plays only a minor role for the soil water isotope cycle under full vegetation, therefore needs to be reconsidered. Even though hypothesis I has previously been frequently used as an untested assumption for various models (e.g. Vogel et al., 2010; Dohnal et al., 2012) it is rarely scrutinized under natural conditions. A complete rejection of this hypothesis could therefore affect the interpretations in those studies and limit their applicability fundamentally. However, further studies are needed to support these findings and before finally rejecting this hypothesis. The lateral mixing processes maybe obscuring the observed near surface enrichment and the effect of preferential flow currently not fully accounted for could further hinder the full interpretation of these findings. It still holds true, that:

Page 5193

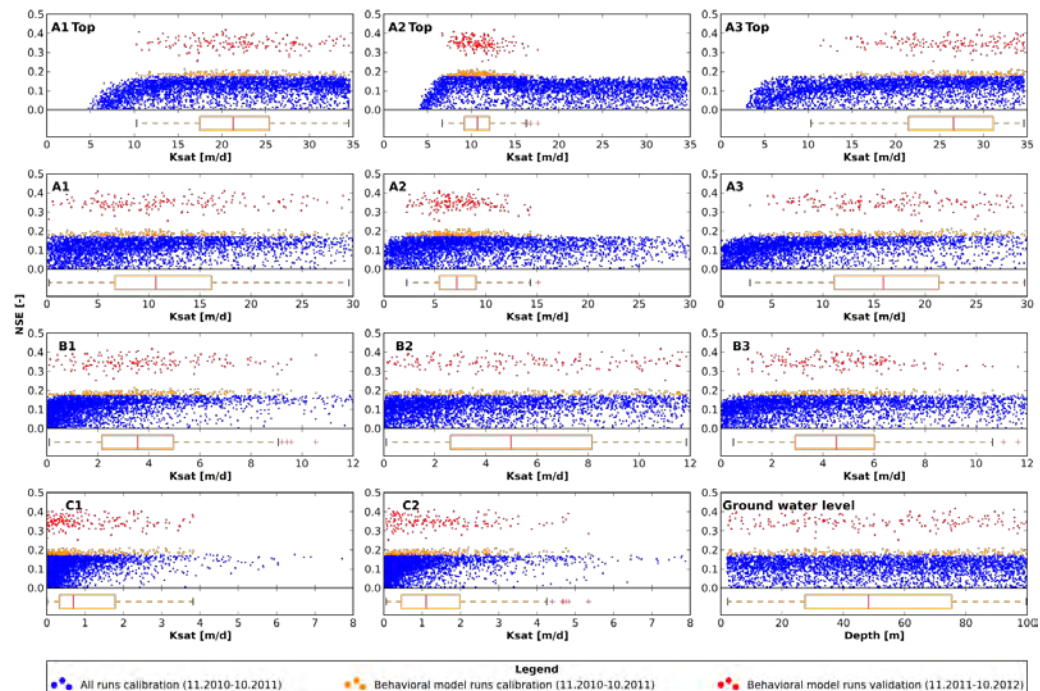
- 19) Line 24: Figure 4: not sure why A1, A2 and A3 are each represented in 2 panels. Please clarify. Also, how were the box plots constructed (see comment 17)

Due to a plotting error the labels in the first row, representing the behavior of the saturated hydraulic conductivity of the top soil layer, were missing the addition "top". The figure caption is updated with respect to comment 17 and 26:

Figure 4: Dotty plots of NSE values (>0.0) during calibration (blue) and for behavioral model runs ($NSE > 0.15$, bias $< \pm 20.0\%$ δ^2H and $R^2 >$

0.65) during calibration (orange) and validation (red) for saturated hydraulic conductivity (Ksat) for all soil types and groundwater depth. Box plots show the unweighted parameter distribution of all behavioral model runs ($NSE > 0.15$, $\text{bias} < \pm 20.0\%$, δ^2H and $R^2 > 0.65$). Results for soil porosity look similar to those of the groundwater and are therefore not shown.

Updated Figure 4:



- 20) Lines 4-6: this does not really come as a surprise as there is typically very little fluctuation in the groundwater isotopic composition due to elevated storage capacities and therefore low turnover. The model can thus not fully discriminate between different parameter values (e.g. Dunn et al., 2008; Hrachowitz et al., 2009)

As indicated by the topography of the hillslope as well as later supported by the model results, the groundwater connection always serves as a major sink of water. The percolation into the deeper soil layers represented by this connection is one of the main flow components responsible for almost half of the total flow leaving the system (see Figure 5).

Closer inspecting the modeled signature of the soil water leaving the soil columns revealed that they closely follow the annual pattern of the forcing signal with a slightly dampened amplitude. The extremely dampened signal of an actual groundwater signal described by Dunn et al. (2008) or Hrachowitz et al. (2009) are outside of the modeling domain and are not responsible for the observed low sensitivity of the model towards groundwater depth. This effect would most likely reveal itself in depth way below 2m.

In the present case we still believe that the limiting infiltration capacity of the lower soil layers (C1 and C2) controls the downward movement of the soil water rather than the actual groundwater depth representing the hydraulic potential at the lower boundary.

To further point the reader in this direction we adapted the respective sentence which now reads:

In particular the low sensitivity of the model towards groundwater depth seems surprising, but can be explained by the potentially low saturated hydraulic conductivities of the lower soil layers C1 and C2 limiting the percolation into the lower soil layers outside of the modeling domain.

- 21) Lines 6-10: why? What is exactly happening at 2m? It seems a bit peculiar to me that at exactly 2m you start getting behavioural models. Please clarify.

With regard to our reply to point 20 raised by the reviewer it can be noted that the actual flow of water within the modeled system requires a deep percolation pathway to extract the water from the modeling domain. In the case the potential of the groundwater connection would be $\leq 2\text{m}$ the connection would serve as a source of water and prevent any percolation into deeper soil layers below 2m. Therefore the model results are always not behavioral.

We added an additional explanation to the end of the respective sentence:

None the less it noteworthy, that no model run without an active groundwater body as a lower boundary condition (groundwater depth $< 2\text{ m}$) results in a model performance with $\text{NSE} > 0$ (Figure 4). With a groundwater depth above 2 m the boundary condition would serve as a source of water with an undefined isotopic signal and prevent any percolation of water into deeper soil layers outside of the modeling domain. The results are therefore in alignment with the topography of the system indicating an active groundwater body deeper than 2 m and support our second hypothesis which we will further discuss in section 3.2.

- 22) Lines 16-18: I am a bit concerned that this can be justified as no information on flow is available to be compared to and the model was only calibrated on tracers (see also comment 10). Please tone this statement a bit down and clearly state the limitation.

We agree with the reviewer that currently our position to directly compare the two calibration targets (soil moisture and soil water isotopic signature) and promote the application of soil water isotopic signature or tracer data in general as a calibration target is a bit weak we therefore complemented our current experimental setup with soil moisture, EC and temperature sensors and established additional sides under different land use as well as different climate conditions.

To further put the given statement in perspective and tone the given statement a bit down we included the following sentences:

Even though the parameter ranges for all behavioral model realizations are not so well confined, the small confidence intervals indicate a certain degree of robustness towards the predicted flows (Figure 3). Additional soil moisture measurements complementing the current setup in the future will allow us to put further confidence in this new approach and the drawn conclusions and allow us to directly compare different calibration targets (i.e. soil moisture vs. soil water isotopic signature).

- 23) Line 22: it will depend on the wetness state of the soil and on the question if the macropores are filled. In other words, this statement may hold for wet conditions, when there is actually water in the macropores. Under dry conditions most of the water will be stored in the matrix and thus also sampled from the matrix. Please reconsider this statement.

Given the hydraulic head of the wick samplers they will sample all water stored in the in the soil between 0 and 30 hPa from the macro pores and the soil matrix. The respective statement was rephrased to clarify this:

This is attributable to the occurrence of preferential flow within the macro pores (Bronstert and Plate, 1997) and the sampling method (PCaps) used to extract the soil water ~~mostly~~ stored in the soil with a matrix potential up to 30 hPa ~~in the macropores~~ (Landon et al., 1999).

- 24) Lines 23-26: This is pretty well established in literature. Thus please include some more recent and relevant references here (McDonnell et al., 2007; Brooks et al., 2009; Beven, 2010; Hrachowitz et al., 2013; McDonnell and Beven, 2014).

We included the following references to the appropriate section:

Thus the isotopic signature between the sampled pore media and the total modeled pore space differs (Brooks et al., 2010; Hrachowitz et al., 2013; McDonnell and Beven, 2014; McGlynn et al., 2002). The model tries to account for these effects by favoring high K_{sat} values during calibration (McDonnell and Beven, 2014; McGlynn et al., 2002).

Page 5195

- 25) Lines 8-10: please also include some more recent references here (e.g. Vogel et al., 2008; Stumpp and Maloszewski, 2010).

We extended the list of references:

Like Gerke (2006) and Šimůnek and van Genuchten (2008) among others we therefore seek to implement a dual permeability approach accounting for different flow patterns within the soil pore space (Gerke, 2006; Jarvis, 2007; Šimůnek and van Genuchten, 2008; Vogel et al., 2000, 2006, 2010).

- 26) Lines 22-25; Figure 5: not sure how the standard deviation was computed. Were likelihood weighted values used? See also comment 17

The standard deviations shown in Figure 5 were calculated for all behavioral model runs without any weighting of the likelihood value.

To further clarify this P. 5196 L. 1 was adapted as follows:

Due to the small confidence intervals of the behavioral model runs (see Figure 3) the standard deviations of the model's flow components are relatively small (see Figure 5; standard deviation and mean value was computed without weighting the likelihood value).

Page 5196

- 27) Line 9: see comment 9

We added the word “comparatively” to put the time span in a better perspective:

This also explains the long mean transit time of water of around 1.0 to 3.9 years (Crespo et al., 2012; Timbe et al., 2014) in comparison to the fast runoff reaction time.

- 28) Line 13 and elsewhere: I am not sure what is meant by “subsurface flow” here. please define: is it shallow groundwater (i.e. Darcy; celerity and pressure head driven) or is it rather understood as preferential flow (velocity and elevation head driven)?

Here we refer to lateral subsurface flow in the vadose zone as the component of water directly entering the stream via percolation from the soil (either from shallow groundwater or preferential flow) as described on P. 5184 L. 4. Thereby representing the component of stream water not following the deep ground water path or the surface runoff due to infiltration access (Hortonian overland flow) prior to becoming stream water.

References used by the Authors:

- Bronstert, A., Plate, E.J., 1997. Modelling of runoff generation and soil moisture dynamics for hillslopes and micro-catchments. *J. Hydrol.* 198, 177–195. doi:10.1016/S0022-1694(96)03306-9
- Boy, J., Valarezo, C., Wilcke, W., 2008. Water flow paths in soil control element exports in an Andean tropical montane forest. *Eur. J. Soil Sci.* 59, 1209–1227. doi:10.1111/j.1365-2389.2008.01063.x
- Crespo, P., Bücker, A., Feyen, J., Vaché, K.B., Frede, H.-G., Breuer, L., 2012. Preliminary evaluation of the runoff processes in a remote montane cloud forest basin using Mixing Model Analysis and Mean Transit Time. *Hydrol. Process.* 26, 3896–3910. doi:10.1002/hyp.8382
- Gerke, H.H., 2006. Preferential flow descriptions for structured soils. *J. Plant Nutr. Soil Sci.* 169, 382–400. doi:10.1002/jpln.200521955
- Hunter, J.D., 2007. Matplotlib: A 2D Graphics Environment. *Comput. Sci. Eng.* 9, 90–95. doi:10.1109/MCSE.2007.55
- Jarvis, N.J., 2007. A review of non-equilibrium water flow and solute transport in soil macropores: principles, controlling factors and consequences for water quality. *Eur. J. Soil Sci.* 58, 523–546. doi:10.1111/j.1365-2389.2007.00915.x
- Landon, M.K., Delin, G.N., Komor, S.C., Regan, C.P., 1999. Comparison of the stable-isotopic composition of soil water collected from suction lysimeters, wick samplers, and cores in a sandy unsaturated zone. *J. Hydrol.* 224, 45–54. doi:10.1016/S0022-1694(99)00120-1
- McDonnell, J.J., Beven, K., 2014. Debates—The future of hydrological sciences: A (common) path forward? A call to action aimed at understanding velocities, celerities and residence time distributions of the headwater hydrograph. *Water Resour. Res.* 50, 5342–5350. doi:10.1002/2013WR015141
- McGlynn, B.L., McDonnell, J.J., Brammer, D.D., 2002. A review of the evolving perceptual model of hillslope flowpaths at the Maimai catchments, New Zealand. *J. Hydrol.* 257, 1–26. doi:10.1016/S0022-1694(01)00559-5
- McKay, M.D., Beckman, R.J., Conover, W.J., 1979. A Comparison of Three Methods for Selecting Values of Input Variables in the Analysis of Output from a Computer Code. *Technometrics* 21, 239–245. doi:10.2307/1268522
- Šimůnek, J., van Genuchten, M.T., 2008. Modeling Nonequilibrium Flow and Transport Processes Using HYDRUS. *Vadose Zone J.* 7, 782–797. doi:10.2136/vzj2007.0074
- Timbe, E., Windhorst, D., Crespo, P., Frede, H.-G., Feyen, J., Breuer, L., 2014. Understanding uncertainties when inferring mean transit times of water through tracer-based lumped-parameter models in Andean tropical montane cloud forest

- catchments. *Hydrol. Earth Syst. Sci.* 18, 1503–1523. doi:10.5194/hess-18-1503-2014
- Uhlenbrook, S., Roser, S., Tilch, N., 2004. Hydrological process representation at the meso-scale: the potential of a distributed, conceptual catchment model. *J. Hydrol.* 291, 278–296. doi:10.1016/j.jhydrol.2003.12.038
- Vogel, H.-J., Cousin, I., Ippisch, O., Bastian, P., 2006. The dominant role of structure for solute transport in soil: experimental evidence and modelling of structure and transport in a field experiment. *Hydrol Earth Syst Sci* 10, 495–506. doi:10.5194/hess-10-495-2006
- Vogel, T., Gerke, H.H., Zhang, R., Van Genuchten, M.T., 2000. Modeling flow and transport in a two-dimensional dual-permeability system with spatially variable hydraulic properties. *J. Hydrol.* 238, 78–89. doi:10.1016/S0022-1694(00)00327-9

References used by the Reviewer:

- Beven, K.J., Preferential flows and travel time distributions: defining adequate hypothesis tests for hydrological process models, *Hydrol. Process.*, 24, 1537-1547, 2010.
- Brooks, J.R., Barnard, H.R., Coulombe, R., and McDonnell, J.J., Ecohydrologic separation of water between trees and streams in a Mediterranean climate, *Nature Geosci.*, 3, 100-104, 2009.
- Dunn, S.M., Bacon, J.R., Soulsby, C., Tetzlaff, D., Stutter, M.I., Waldron, S., and Malcolm, I.A., Interpretation of homogeneity in $\delta^{18}\text{O}$ signatures of stream water in a nested sub-catchment system in north-east Scotland, *Hydrol. Process.*, 22, 4767-4782, 2008
- Freer, J., Beven, K. and Ambroise, B. (1996), Bayesian estimation of uncertainty in runoff prediction and the value of data: An application of the GLUE approach, *Water Resour. Res.*, 32(7), 2161-2173.
- Hrachowitz, M., Soulsby, C., Tetzlaff, D., Dawson, J.J.C., Dunn, S.M., and Malcolm, I.A., Using long-term data sets to understand transit times in contrasting headwater catchments, *J. Hydrol.*, 367, 237-248, 2009
- Hrachowitz, M., Savenije, H., Bogaard, T.A., Tetzlaff, D. and Soulsby, C. (2013), What can flux tracking teach us about water age distribution patterns and their temporal dynamics?, *Hydrol. Earth Syst. Sci.*, 17, 533-564
- Kirchner, J.W., Feng, X., and Neal, C., Catchment-scale advection and dispersion as a mechanism for fractal scaling in stream tracer concentrations, *J. Hydrol.*, 254, 82-101, 2001
- Königer, P., Leibundgut, C., Link, T., and Marshall, J.D., Stable isotopes applied as water tracers in column and field studies, *Organic Geochemistry*, 41, 31-40, 2010
- Legout, A., Legout, C., Nys, S., and Dambrine, E., Preferential flow and slow convective chloride transport through the soil of a forested landscape (Fougères, France), *Geoderma*, 151, 179-190, 2009
- McDonnell, J.J., Sivapalan, M., Vaché, K., Dunn, S., Grant, G., Haggerty, R., Hinz, C., Hooper, R., Kirchner, J., Roderick, M.L., Selker, J., and Weiler, M., Moving beyond heterogeneity and process complexity: a new vision for watershed hydrology, *Water Resour. Res.*, 43, W07301, 2007
- McDonnell, J.J. and Beven, K., Debates - The future of hydrological sciences: A (common) path forward? A call to action aimed at understanding velocities, celebrities and residence time distributions of the headwater hydrograph, *Water Resour. Res.* doi:10.1002/2013/WR015141, in press.
- McMillan, H.K., Tetzlaff, D., Clark, M., and Soulsby, C., Do time-variable tracers aid the evaluation of hydrological model structure? A multimodel approach, *Water Resour. Res.*, 48, W05501, 2012
- Stumpp, C., and Maloszewski, P., Quantification of preferential flow and flow heterogeneities in an unsaturated soil planted with different crops using the environmental isotope $\delta^{18}\text{O}$, *J. Hydrol.*, 394, 407-415, 2010

- Van Schaik, N.L.M.B., Schnabel, S., and Jetten, V.G., The influence of preferential flow on hillslope hydrology in a semi-arid watershed (in the Spanish Dehesas), Hydrol. Process., 22, 3844-3855, 2008
- Vogel, T., Sanda, M., Dusek, J., Dohnal, M., and Votrubova, J., Using oxygen-18 to study the role of preferential flow in the formation of hillslope runoff, Vadose Zone J., 9, 252-259, 2008
- Weiler, M., and Naef, F., An experimental tracer study of the role of macropores in infiltration in grassland soils, Hydrol. Process., 17, 477-493, 2003

Reply to Referee: Anonymous Reviewer 2

In the following please find the corrections and comments to the referee's response. For clarity, the comments of the referee were copied in black and our comments are in blue.

Sections taken from the updated manuscript are shown in *italic*. Now deleted parts are ~~crossed-out~~ and newly added parts are underlined.

The paper puts forward a nice data set and a nice modeling application; however, suffers from poor presentation and structure. The novelty and portability of the study look limited as the study is currently packaged. Further, it is not clear what the central experiment really is in this study. I recommend substantial re-writing and re-structuring to help address these concerns. Without that, the study comes across as presenting another model application to another field site when it should be clear that the experiment is on the added value of these wick-samples soil data on improving model structure and/or defining process representation. As this is a relatively short paper, it should not be an issue to extend the study and consider such aspects.

General comment:

The recommendations of considering “constrained, more complex modeling approaches” (P5182L16) makes me anticipate that the study will look at models of various complexities and assess the added value of isotopic data. Further, by line 22 on the same page, I get the feeling we already know much about the hydrology of this sight. Altogether, it leaves me wondering what we are learning (or where the novelty lies) in this study. More to the point: in what way does this study help progress understand in hydrology as a science? How are the central findings (or approaches) portable to other regions of the world? The authors should consider re-packaging the presentation to better highlight the general contribution of this study to the field of hydrology (the central novelty). As it is currently written, the lead in to this paper reads like a site-specific study, which I think is selling the work short (and not overly relevant for HESS). Mixing results and discussion into one section further weakens the storyline and presentation of this study. It puts up a red flag to me that not much is going on here more than a model application. Model applications are typically not sufficient these days as standalone publications. I am wondering what the central experiment of the study really is. From the introduction and build up, I am anticipating a model complexity vs. gained process knowledge type experiment; however, in its current form, the study is far from delivering such an experiment. Statements like the study is highlighting “the general suitability of high resolution soil water isotope profiles to improve our understanding” (P5195L16) really leave much to be desired. The model and setup of the manuscript should be shifted to quantify exactly how much the high resolution isotope profiles contribute. This may require addition modeling runs in revision in addition to repacking the current results. Are these data reducing prediction errors or improving timing estimates or make parameters easier to define in the model? Such quantifications should be put forward. Then, in a separate discussion section, the merits or the cost-benefit of gathering such wick-sampled data (which are quite difficult to obtain) relative to the process understand (and subsequent improvements) can be more fully considered. This increases portability of the study since it helps readers assess if they would benefit from employing such setups relative to what they already know hydrological processes in their own region of interest. Also, it could assist them in defining models of appropriate complexity.

General replies:

We gratefully acknowledge the recommendations of the reviewer and adapted the paper in the relevant section to account for his/her concerns. Mainly we further clarified the intention of the paper and highlighted the novelty of the chosen approach to improve the general perception of the paper. By further positioning the paper in comparison to an extended list of

recent literature, we hope to strengthen the position of the paper. By shortening the introduction as recommended by reviewer 1 M. Hrachowitz we believe that the readability of the manuscript was greatly improved. Hence, potential readers should not be misguided in awaiting a kind of “model comparison study” rather than a presentation of a novel modeling approach benefiting from soil water isotope data on the hillslope scale and highlighting its potential and future research potential. We thoroughly incorporated the detailed comments of reviewer 2 and thank the reviewer once more for all his effort.

Detailed comments:

Page 5180

- 1) Line 5: Change to “processes involved”

The text has been changed accordingly.

- 2) Line 25: Would this be a chance to highlight or mention other possible calibration targets? Consider connectivity (like recent work by Jencso) or travel times (like recent work by Hrachowitz or Heidbuchel)?

The work done e.g. by Jencso et al. (2009) and Tetzlaff et al. (2007) is especially useful to describe how catchment structure influences the connectivity pattern within a given catchment and when they become active. Similar to mean transit time estimates or the master transit time distribution proposed by Heidbüchel et al. (2012) they could later serve as calibration targets for the model or additional proxies to validate the predicted flows.

Exactly for this purpose we used in our case the results of previous studies carried out in the chosen study area to verify the predicted flow components of our previously untested model structure relying on the correct representation of the flow components and their isotopic signatures.

Page 5181

- 3) Line 26: that is an awkward abbreviation for 1960's: : : Double check with HESS standards.

The date has been changed from 1960ies to 1960's.

Page 5182

- 4) Line 10: Change “this” to “these”

The word has been changed accordingly.

- 5) Line 22: wording is awkward in here: : :

The following sentence was rephrased and extended to account partially for the general comments raised in the beginning (P. 5182 L. 20-23):

“To verify and validate the hydrological processes and the inferred results of a 2-D model setup using the Catchment Modeling Framework (CMF; Kraft et al., 2011), we choose a study site within a catchment for which already a principle process understanding about prevailing soil water flows existed.”

The section now reads:

Hence, it is tempting to investigate the suitability of isotope tracers to delineate hydrological flow paths using a more physical modeling approach. Recent research in this direction includes the work of McMillan et al. (2012) and Hrachowitz et al. (2013) using chloride as a tracer to study the fate of water in catchments in the Scottish Highlands. Even though some processes affecting the soil water isotope transport are still represented in a simplified manner or could be , due to their limited effect/importance of the respective process within the given study site, omitted, this approach allows us to determine the potential of soil water isotope modeling in catchment hydrology and highlight future need for research. Hence, it is tempting to investigate the suitability of isotope tracers to delineate hydrological flow paths using a constrained, more complex modeling approach. Constrained in the way, that relevant processes could either be omitted, due to limited effect/importance of the respective process, or easily be incorporated into an existing modeling framework. To verify and validate the hydrological processes and the inferred results of a 2d model setup using the Catchment Modeling Framework (CMF; Kraft et al., 2011), we choose a study site within a catchment for which already a principle process understanding about prevailing soil water flows existed. This study is conducted in a 75 km² montane rain forest catchment in south Ecuador, the upper part of the Rio San Francisco, which has been under investigation since 2007 (Bogner et al., 2014; Boy et al., 2008; Bücker et al., 2011; Crespo et al., 2012; Fleischbein et al., 2006; Goller et al., 2005; Timbe et al., 2014; Windhorst et al., 2013b). The findings of those studies (briefly synthesized in section 2.3) will a) ease the setup of chosen model, b) let us define suitable boundary conditions for the chosen modeling approach and c) serve as a reference for the delineated flow bath. The additional information from previous studies conducted in the study area, will therefore highlight the potential of this new model approach to delineate hydrological flow paths under natural conditions and support our preliminary hydrological process understanding retrieved from more classical methods conducted in the past.

Page 5184

- 6) Line 10: Again, I am anticipating a model comparison study investigating the role of model complexity due to these statements.

The phrase “conventional modeling approaches” and the assumption that the chosen isotope approach will perform better than those, refers directly to the section P.5180 L. 24 – P. 5181 L. 10 at the beginning of the introduction. Shortening the introduction by moving the presentation of the current hydrological process understanding in the study area into the method section, as recommended of reviewer 1, will now bring this section closer together and hopefully make this context more clear.

Page 5186

- 7) Line 2: I wonder how much the average reader cares about “your” understanding of hydrological processes within “your” study area. How portable are your findings?

The intention of subsection 2.2 Experimental hillslope is to describe the general settings of the natural hillslope later represented by the 2-D model hillslope. As the reviewer pointed out, those settings are quite unique for our catchment. The transferability of the presented approach is later shown by the good modeled fit and the alignment with the independent studies previously conducted in the study area yielding similar findings with regard to the prevailing flow processes.

- 8) Line 18: There is nothing in this subsection?

During typesetting the numbering of the headings was corrupted.

Was changed from:

- 2.3 Measurements
- 2.4 Passive capillary fiberglass wick samplers (PCaps)
- 2.5 Soil survey

to:

- 2.3 Measurements
- 2.3.1 Passive capillary fiberglass wick samplers (PCaps)
- 2.3.2 Soil survey

Page 5188

- 9) Line 25: Did you explicitly investigate the impact of these sizes? What is the smallest size you need to account for mixing processes of stable water isotopes?

Preliminary testing of the model performance was carried out to optimize model performance with regard to computing time and model quality. The final discretization of the modeled hillslope used in this study presents a manually optimized mesh grid of cells with the same vertical shift (5m) but different vertical and horizontal resolution. Based on our observations the model quality and representation of small scale processes would thereby increase continuously with declining cell size but the computational time would increase more or less exponentially.

To further clarify this we adapted the section as follows:

Preliminary testing revealed that a discretization based on a constant vertical shift (5m) and alternating cell width increasing width depth (ranging from 1.25 cm to 83.75 cm) yielded the optimum model performance with regard to computing time and model quality. Based on 5 m contour lines (derived by local LIDAR measurements with a raster resolution of 1 m; using the Spatial Analyst package of ArcGis 10.1 from ESRI) this hillslope was further separated into 32 cells ranging in size from 16.6 m² to 2,921.6 m² (Figure 1a). To account for small scale dynamics in the mixing process of stable water isotopes and to be able to run the model with a satisfactory speed, two different horizontal resolutions were used to discretize the each layer with depth. Layers encompassing wick samplers and their upslope neighbor were run with a finer resolution of at least 26 virtual soil layers increasing in thickness width depth (1x1.25 cm, 13 x 2.5 cm, 7 x 5 cm and 5 x 10-50 cm). All other cells were calculated with coarser resolution of at least 14 virtual soil layers (1 x 1.25 cm, 1 x 2.5 cm, 6 x 5 cm, 3 x 10 cm and 3 x 15-83.75 cm).

Page 5192

- 10) Line 9: "Our first hypothesis I" is poor wording (it implies multiple I hypotheses).

The "Our first hypothesis I" has been rephrased to "Our first hypothesis".

Page 5195

- 11) Line 5: Rather than “stressing”, why not inherently demonstrate it? You have a really great tool to explore (quantify) the “importance of accounting” for various processes and the added value obtained through these data.

We thank the reviewer for noting the importance to present the impact of preferential flow processes and the potential of CMF to use it as such a testing environment. As stated on P. 5195 L. 8-9 that we are currently initiating the implementation of the necessary routines within CMF to account for preferential flow. Until now, the modeled K_{sat} values are not to be taken as the conductivity of the micropore system only.

Page 5196

- 12) Line 10: if the digits are significant, it should be “1.0 years”

Both times are now shown with two significant digits (1.0 and 3.9 years).

- 13) Line 20: is a^{-1} the appropriate abbreviation here?

As we are referring to the maximum annual flow (m^3) transported laterally between cells per year (a) in the top soil layers the abbreviation $\text{m}^3 \text{a}^{-1}$ is correct.

References used by the Authors:

- Boy, J., Valarezo, C., Wilcke, W., 2008. Water flow paths in soil control element exports in an Andean tropical montane forest. *Eur. J. Soil Sci.* 59, 1209–1227. doi:10.1111/j.1365-2389.2008.01063.x
- Bogner, C., Bauer, F., Trancón y Widemann, B., Viñan, P., Balcazar, L., Huwe, B., 2014. Quantifying the morphology of flow patterns in landslide-affected and unaffected soils. *J. Hydrol.* 511, 460–473. doi:10.1016/j.jhydrol.2014.01.063
- Bücker, A., Crespo, P., Frede, H.-G., Vaché, K., Cisneros, F., Breuer, L., 2010. Identifying Controls on Water Chemistry of Tropical Cloud Forest Catchments: Combining Descriptive Approaches and Multivariate Analysis. *Aquat. Geochem.* 16, 127–149. doi:10.1007/s10498-009-9073-4
- Crespo, P., Bücker, A., Feyen, J., Vaché, K.B., Frede, H.-G., Breuer, L., 2012. Preliminary evaluation of the runoff processes in a remote montane cloud forest basin using Mixing Model Analysis and Mean Transit Time. *Hydrol. Process.* 26, 3896–3910. doi:10.1002/hyp.8382
- Fleischbein, K., Wilcke, W., Valarezo, C., Zech, W., Knoblich, K., 2006. Water budgets of three small catchments under montane forest in Ecuador: experimental and modelling approach. *Hydrol. Process.* 20, 2491–2507. doi:10.1002/hyp.6212
- Goller, R., Wilcke, W., Leng, M.J., Tobschall, H.J., Wagner, K., Valarezo, C., Zech, W., 2005. Tracing water paths through small catchments under a tropical montane rain forest in south Ecuador by an oxygen isotope approach. *J. Hydrol.* 308, 67–80. doi:10.1016/j.jhydrol.2004.10.022
- Heidbüchel, I., Troch, P.A., Lyon, S.W., Weiler, M., 2012. The master transit time distribution of variable flow systems. *Water Resour. Res.* 48, 19 PP. doi:10.1029/2011WR011293
- Hrachowitz, M., Savenije, H., Bogaard, T.A., Tetzlaff, D. and Soulsby, C. (2013), What can flux tracking teach us about water age distribution patterns and their temporal dynamics?, *Hydrol. Earth Syst. Sci.*, 17, 533-564

- Jencso, K.G., McGlynn, B.L., Gooseff, M.N., Wondzell, S.M., Bencala, K.E., Marshall, L.A., 2009. Hydrologic connectivity between landscapes and streams: Transferring reach- and plot-scale understanding to the catchment scale. *Water Resour. Res.* 45, W04428. doi:10.1029/2008WR007225
- Kraft, P., Vaché, K.B., Frede, H.-G., Breuer, L., 2011. CMF: A Hydrological Programming Language Extension For Integrated Catchment Models. *Environ. Model. Softw.* 26, 828–830. doi:10.1016/j.envsoft.2010.12.009
- McMillan, H.K., Tetzlaff, D., Clark, M., and Soulsby, C., Do time-variable tracers aid the evaluation of hydrological model structure? A multimodel approach, *Water Resour. Res.*, 48, W05501, 2012
- Tetzlaff, D., Soulsby, C., Bacon, P.J., Youngson, A.F., Gibbins, C., Malcolm, I.A., 2007. Connectivity between landscapes and riverscapes—a unifying theme in integrating hydrology and ecology in catchment science? *Hydrol. Process.* 21, 1385–1389. doi:10.1002/hyp.6701
- Timbe, E., Windhorst, D., Crespo, P., Frede, H.-G., Feyen, J., Breuer, L., 2014. Understanding uncertainties when inferring mean transit times of water through tracer-based lumped-parameter models in Andean tropical montane cloud forest catchments. *Hydrol. Earth Syst. Sci.* 18, 1503–1523. doi:10.5194/hess-18-1503-2014
- Windhorst, D., Waltz, T., Timbe, E., Frede, H.-G., Breuer, L., 2013b. Impact of elevation and weather patterns on the isotopic composition of precipitation in a tropical montane rainforest. *Hydrol. Earth Syst. Sci.* 17, 409–419. doi:10.5194/hess-17-409-2013

Revised manuscript

**Stable water isotope tracing through hydrological models for
disentangling runoff generation processes at the hillslope scale**

David Windhorst¹, Philipp Kraft¹, Edison Timbe^{1,2}, Hans-Georg Frede¹, Lutz Breuer¹

[1] {Institute for Landscape Ecology and Resources Management (ILR), Research Centre for
BioSystems, Land Use and Nutrition (IFZ), Justus-Liebig-Universität Gießen, Germany}
[2] {Grupo de Ciencias de la Tierra y del Ambiente, DIUC, Universidad de Cuenca,
Ecuador}

Correspondence to: D. Windhorst (david.windhorst@umwelt.uni-giessen.de)

Abstract

Hillslopes are the dominant landscape components where incoming precipitation is transferred to become groundwater, streamflow or atmospheric water vapor. However, directly observing flux partitioning in the soil is almost impossible. Hydrological hillslope models are therefore being used to investigate the processes involved. Here we report on a modeling experiment using the Catchment Modeling Framework (CMF) where measured stable water isotopes in vertical soil profiles along a tropical mountainous grassland hillslope transect are traced through the model to resolve potential mixing processes. CMF simulates advective transport of stable water isotopes ^{18}O and ^2H based on the Richards equation within a fully distributed 2-D representation of the hillslope. The model successfully replicates the observed temporal pattern of soil water isotope profiles (R^2 0.84 and NSE 0.42). Predicted flows are in good agreement with previous studies. We highlight the importance of groundwater recharge and shallow lateral subsurface flow, accounting for 50% and 16% of the total flow leaving the system, respectively. Surface runoff is negligible despite the steep slopes in the Ecuadorian study region.

1 Introduction

Delineating flow path in a hillslope is still a challenging task (Bronstert, 1999; McDonnell et al., 2007; Tetzlaff et al., 2008; Beven and Germann, 2013). Though a more complete understanding in the partitioning of incoming water to surface runoff, lateral subsurface flow components or percolation allows to better understand, for example, the impact of climate and land use change on hydrological processes. Models are often used to test different rainfall-runoff generation processes and the mixing of water in the soil (e.g. Kirkby, 1988; Weiler and McDonnell, 2004). Due to the prevailing measurement techniques and therefore the available

36 datasets it has become common practice to base the validation of modeled hillslope flow
37 processes on quantitative data on storage change. In the simplest case, system wide storage
38 changes are monitored by discharge and groundwater level measurements or, on more
39 intensively instrumented hillslopes, the storage change of individual soil compartments is
40 monitored by soil moisture sensors. In the typical 2-D flow regime of a slope, such models
41 bear the necessity not only to account for the vertical but also for the lateral movements of
42 water within the soil (Bronstert, 1999). Quantitative data on storage change in this regard are
43 only suitable to account for the actual change in soil water volume, but not to assess the
44 source or flow direction. Knowing tracer compositions of relevant hydrological components
45 along a hillslope allows to account for mixing processes and thereby to delineate the actual
46 source of the incoming water. Over the years a number of artificial, e.g. fluorescence tracers
47 like Uranine, and natural tracers, e.g. chloride or stable water isotopes, have emerged. While
48 the application of the artificial tracers is rather limited in space and time (Leibundgut et al.,
49 2011), the latter ones can be used over a wide range of scales (Barthold et al., 2011; Genereux
50 and Hooper, 1999; Leibundgut et al., 2011; Muñoz-Villers and McDonnell, 2012; Soulsby et
51 al., 2003). Stable water isotopes such as oxygen-18 (^{18}O) and hydrogen-2 (^2H) are integral
52 parts of water molecules and consequently ideal tracers of water. Over the last decades
53 isotope tracer studies have proven to provide reliable results on varying scales (chamber, plot,
54 hillslope to catchment scale) and surface types (open water, bare soils, vegetated areas) to
55 delineate or describe flow processes under field experimental or laboratory conditions
56 (Garvelmann et al., 2012; Hsieh et al., 1998; Sklash et al., 1976; Vogel et al., 2010;
57 Zimmermann et al., 1968).

58 Although the first 1d process orientated models to describe the dynamics of stable water
59 isotope profiles for open water bodies (Craig and Gordon, 1965) and a bit later for soils
60 (Zimmermann et al., 1968) have been developed as early as in the mid 1960's, fully
61 distributed 2-D to 3-D hydrological tracer models benefitting from the additional information

to be gained by stable water isotopes are still in their early development stages (Davies et al., 2013) or use strong simplifications of the flow processes (e.g. TAC^D using a kinematic wave approach; Uhlenbrook et al., 2004). This can be attributed to the high number of interwoven processes affecting the soil water isotope fluxes not only in the soil's liquid phase but also in its vapor phase. The more process based 1d models (Braud et al., 2005; Haverd and Cuntz, 2010) therefore simultaneously solve the heat balance and the mass balance simultaneously for the liquid and the vapor phase and are thereby describing the:

- convection and molecular diffusion in the liquid and vapor phase,
- equilibrium fractionation between liquid and vapor phase,
- fractionation due to evaporation, and
- non-fractionated flux due to percolation and transpiration.

To obtain and compute the data required to apply these kind of models beyond the plot scale is still challenging. However, due to emerging measuring techniques the availability of sufficient data becomes currently more realistic. Increasing computational power and especially the cavity ring-down spectroscopy (CRDS) - a precise and cost effective method to analyze the signature of stable water isotopes (Wheeler et al., 1998) - promise progress.

Hence, it is tempting to investigate the suitability of isotope tracers to delineate hydrological flow paths using a more physical modeling approach. Recent research in this direction includes the work of McMillan et al. (2012) and Hrachowitz et al. (2013) using chloride as a tracer to study the fate of water in catchments in the Scottish Highlands. Even though some processes affecting the soil water isotope transport are still represented in a simplified manner or could be, due to their limited effect/importance of the respective process within the given study site, omitted, this approach allows us to determine the potential of soil water isotope modeling in catchment hydrology and highlight future need for research.

This study is conducted in a 75 km² montane rain forest catchment in south Ecuador, the upper part of the Rio San Francisco, which has been under investigation since 2007 (Bogner et al., 2014; Boy et al., 2008; Bücker et al., 2011; Crespo et al., 2012; Fleischbein et al., 2006; Goller et al., 2005; Timbe et al., 2014; Windhorst et al., 2013b). The findings of those studies (briefly synthesized in section 2.3) will a) ease the setup of chosen model, b) let us define suitable boundary conditions for the chosen modeling approach and c) serve as a reference for the delineated flow bath. The additional information from previous studies conducted in the study area, will therefore highlight the potential of this new model approach to delineate hydrological flow paths under natural conditions and support our preliminary hydrological process understanding retrieved from more classical methods conducted in the past.

Within this catchment we selected a hillslope with a distinct drainage area and nearly homogenous land-use and established an experimental sampling scheme to monitor the isotopic signatures of the soil water of three soil profiles using passive capillary fiberglass wick samplers (PCaps). Based on the proposed modeling approach a 2-D virtual hillslope representation of this hillslope was then implemented using the Catchment Modeling Framework (CMF; Kraft et al., 2011). Due to the necessity to mix the flows in accordance to the observed soil water isotope signatures we are confident, that the degree of certainty for the modeled flow path will be higher, than for conventional modeling approaches relying solely on quantitative information to evaluate the modeled data. Replacing the calibration target bears now the necessity to mix the right amount and signature of any given flow component, whereas the quantitative change only relies on the actual amount of water leaving or entering any given compartment. We will quantify the following flow components to disentangle the runoff generation processes: surface runoff, lateral subsurface flow in the vadose zone and percolation to groundwater. The lateral subsurface flow will be further subdivided into near surface lateral flow and deep lateral flow.

To validate the chosen modeling approach and assess our process understanding we tested the following hypotheses:

- I. Under the given environmental conditions - high precipitation and humidity - (Bendix et al., 2008) and full vegetation cover (Dohnal et al., 2012; Vogel et al., 2010) only non-fractionating and advective water transport of isotopes is relevant. Gaseous advection and diffusive process in the gaseous as well as the liquid phase and the enrichment due to evaporation are negligible; hence the stable water isotopes behave like a conservative tracer.
- II. Large shares of the soil water percolate to deeper horizons, thereby creating long mean transit times (MTT) (Crespo et al., 2012; Timbe et al., 2014).
- III. Due to the high saturated conductivities of the top soil layers the occurrence of Hortonian overland flow is unlikely to have an important contribution to the observed flows (Crespo et al., 2012)
- IV. Fast near surface lateral flow contributes essentially to downhill water flows and play a relevant role to understand the overall hydrological system (Bücker et al., 2010).

2 Materials and Methods

2.1 Study area

The hillslope under investigation is located within the catchment of the Rio San Francisco in South Ecuador (3°58'30"S, 79°4'25"W) at the eastern outskirts of the Andes and encompasses an area of 75 km². Close to the continental divide the landscape generally follows a continuous eastward decline towards the lowlands of the Amazon basin (Figure 1b). Due to the high altitudes (1720-3155m a.s.l.), the deeply incised valleys (slopes are on

average 25°-40° over the entire watershed), the low population density and the partly protected areas of the Podocarpus National Park, the human impact within the catchment is relatively low. The southern flanks of the Rio San Francisco are covered by an almost pristine tropical mountain cloud forest and lie mostly within the Podocarpus National Park. At lower elevations the northern flanks have mostly been cleared by natural or slash-and-burn fires during the last decades and are now partially used for extensive pasture (*Setaria sphacelata* Schumach.), reforestation sites (*Pinus patula*), are covered by shrubs or invasive weeds (especially tropical bracken fern; *Pteridium aquilinum* L.). The climate exhibits a strong altitudinal gradient creating relatively low temperatures and high rainfall amounts (15.3°C and 2000 mm a⁻¹ at 1960 m a.s.l. to 9.5°C and >6000 mm a⁻¹ at 3180 m a.s.l.) with the main rainy season in the austral winter (Bendix et al., 2008). A comprehensive description of the soils, climate, geology and land use has been presented by Beck et al. (2008), Bendix et al. (2008) and Huwe et al. (2008).

2.2 Experimental hillslope

To test our understanding of hydrological processes within the study area we choose a hillslope with a nearly homogenous land use (Figure 1). It is located on an extensive pasture site with low intensity grazing by cows and dominated by *Setaria sphacelata*. *Setaria sphacelata* is an introduced tropical C4 grass species that forms a dense tussock grassland with a thick surface root mat (Rhoades et al., 2000). This grass is accustomed to high annual rainfall intensities (>750 mm a⁻¹), has a low drought resistance and tolerates water logging to a greater extent than other tropical grass types (Colman and Wilson, 1960; Hacker and Jones, 1969). The hillslope has a drainage area of 0.025 km², a hypothetical length of the subsurface flow of 451 m and an elevation gradient of 157 m with an average slope of 19.2°. The soil catena of the slope was recorded by Pürckhauer sampling and soil pits. To investigate the passage of water through the hillslope a series of three wick sampler has been installed along the line of subsurface flow.

Climate forcing data with an hourly resolution of precipitation, air temperature, irradiation, wind speed and relative humidity was collected by the nearby (400 m) climate station “ECSF” at similar elevation. Isotopic forcing data was collected manually for every rainfall event from Oct 2010 until Dec 2012 using a Ø25 cm funnel located in close proximity of the chosen hillslope at 1900 m a.s.l. (Timbe et al., 2014). To prevent any isotopic fractionation after the end of a single rainfall event (defined as a period of 30min without further rainfall) all samples were directly sealed with a lid and stored within a week in 2mL amber glass bottles for subsequent analysis of the isotopic signature as described in section 2.4.1 (all samples <2ml were discarded).

2.3 Current process understanding at the catchment scale

The catchment of the Rio San Francisco has been under investigation since 2007 (Bücker et al., 2011; Crespo et al., 2012; Timbe et al., 2014; Windhorst et al., 2013b) and was complemented by a number of studies on forested micro catchments ($\approx 0.1 \text{ km}^2$) within this catchment (Bogner et al., 2014; Boy et al., 2008; Fleischbein et al., 2006; Goller et al., 2005). Studies on both scales identify the similar hydrological processes to be active within the study area.

Studies on the micro scale (Boy et al., 2008; Goller et al., 2005), supported by solute data and end member mixing analysis at the meso scale (Bücker et al., 2011; Crespo et al., 2012), showed that fast ‘organic horizon flow’ in forested catchments dominates during discharge events, if the mineral soils are water saturated prior to the rainfall. Due to an abrupt change in saturated hydraulic conductivity (K_{sat}) between the organic (38.9 m d^{-1}) and the near-surface mineral layer (0.15 m d^{-1}) this ‘organic horizon flow’ can contribute up to 78% to the total discharge during storm events (Fleischbein et al., 2006; Goller et al., 2005). However, the overall importance of this ‘organic horizon flow’ is still disputable, because the rainfall intensity rarely gets close to such a high saturated hydraulic conductivity. In 95% of the

measured rainfall events between Jun 2010 and Oct 2012 the intensity was below 0.1 m d^{-1} ($\approx 4.1 \text{ mm h}^{-1}$) and was therefore 15 times lower than the saturated hydraulic conductivity of the mineral soil layer below the organic layer under forest vegetation and around 30 times lower than the saturated hydraulic conductivity of the top soil under pasture vegetation (Zimmermann and Elsenbeer, 2008; Crespo et al., 2012). The same conclusion holds true for the occurrence of surface runoff due to infiltration excess on pasture (lacking a significant organic layer). Solely based on rainfall intensities surface runoff is therefore relatively unlikely to contribute to a larger extent in rainfall-runoff generation. The reported K_{sat} values are based on measurements of 250 cm^3 undisturbed soil core samples vertically extracted from the center of each respective layer. Due to the chosen sampling method and the limited size of the soil cores the effective saturated hydraulic conductivity will be even higher and can vary for the horizontal flow component. When and to which extent a subsurface saturated prior the rainfall event would still trigger surface runoff on pastures therefore remains to be investigated.

Bücker et al. (2010) and Timbe et al. (2014) could show that base flow on the other hand has a rather large influence on the annual discharge volume across different land use types, accounting for >70% and >85%, respectively. These findings are also supported by the long mean transit time (MTT) of the base flow for different sub-catchments of the Rio San Francisco in comparison to the fast runoff reaction times, varying according to Timbe et al. (2014) between 2.1 and 3.9 years. Accordingly, the current findings confirm that the base flow – originating from deeper mineral soil and bedrock layers– is dominating the overall hydrological system in the study area (Crespo et al., 2012; Goller et al., 2005). Apart from this dominating source of base flow, Bücker et al. (2010) identified near surface lateral flow as a second component to be relevant for the generation of base flow for pasture sites.

2.4 Measurements

2.4.1 Passive capillary fiberglass wick samplers (PCaps)

We installed *passive capillary fiberglass wick samplers* (PCaps; short *wick samplers*, designed according to Mertens et al. (2007)) as soil water collectors at three locations along an altitudinal transects under pasture vegetation in three soil depths. PCaps maintain a fixed tension based on the type and length of wick (Mertens et al., 2007), require low maintenance and are most suitable to sample mobile soil water without altering its isotopic signature (Frisbee et al., 2010; Landon et al., 1999). We used woven and braided 3/8-inch fiberglass wicks (Amatex Co. Norristown, PA, US). 0.75 m of the 1.5 m wick was unraveled and placed over a 0.30 x 0.30 x 0.01 m square plastic plate, covered with fine grained parent soil material and then set in contact with the undisturbed soil.

Every collector was designed to sample water from three different soil depths (0.10, 0.25 and 0.40 m) with the same suction, all having the same sampling area of 0.09 m², wick type, hydraulic head of 0.3 m (vertical distance) and total wick length of 0.75 m. To simplify the collection of soil water the wick samplers drained into bottles placed inside a centralized tube with an inner diameter of 0.4 m and a depth of 1.0 m. To avoid any unnecessary alterations of the natural flow above the extraction area of the wick sampler the centralized tube was placed downhill and the plates were evenly spread uphill around the tube. A flexible silicon tube with a wall thickness of 5 mm was used to house the wick and to connect it to the 2 L sampling bottles storing the collected soil water. The silicon tube prevents evaporation and contamination of water flowing through the wick. Weekly bulk samples were collected over the period from Oct 2010 until Dec 2012 if the sample volume exceeded 2 mL. Soil water and the previously mentioned precipitation samples are analyzed using a cavity ring down spectrometer (CRDS) with a precision of 0.1 per mil for ¹⁸O and 0.5 for ²H (Picarro L1102-i, CA, US).

2.4.2 Soil survey

The basic soil and soil hydraulic properties for each distinct soil layer along the hillslope where investigated up to a depth of 2 m. Pürckhauer sampling for soil texture and succession of soil horizons was done every 25 m, while every 100 m soil pits were dug for sampling soil texture, soil water retention curves (pF-curves), porosity and succession of soil horizons. The results were grouped into 8 classes (Tab. 1) and assigned to the modeling mesh as shown in Figure 2. Retention curves (pF-curves) were represented by the *Van Genuchten-Mualem* function using the parameters α and n .

All soils developed from the same parent material (clay schist) and are classified as Haplic Cambisol with varying soil thickness. Soil thickness generally increased downhill varying between 0.8 m and 1.8 m in depressions. Clay illuviation was more pronounced in the upper part of the hillslope (higher gradient in clay content) indicating lower conductivities in deeper soil layers.

2.5 Modeling

2.5.1 The Catchment Modeling Framework (CMF)

The Catchment Modeling Framework (CMF) developed by Kraft et al. (2011) is a modular hydrological model based on the concept of finite volume method introduced by Qu and Duffy (2007). Within CMF those finite volumes (e.g. soil water storages, streams) are linked by a series of flow accounting equations (e.g. Richards or Darcy equation) to a one to three dimensional representation of the real world hydrological system. The flexible set up of CMF and the variety of available flow accounting equations allows customizing the setup as required in the presented study. In addition to the water fluxes, the advective movement of tracers within a given system can be accounted for by CMF, making this modeling framework especially suitable to be used in our tracer study (Kraft et al., 2010). Starting with Beven and Germann (1982) scientist over the last decades frequently argued that Richards equation like

flow accounting equation assuming a time invariant and well mixed homogenous flow of water through the soil pore space, similar to those currently implemented in CMF, are not suitable to account for preferential flow relevant for modeling tracer transport (Brooks et al., 2010; Germann et al., 2007; Hrachowitz et al., 2013; Stumpp and Maloszewski, 2010). Being developed for the quantitative representation of soil water flow this equations cannot distinguish between water stored in different soil compartments (namely the soil matrix and macro pores) and only artificially try to represent macropore flow e.g. by favoring high saturated conductivity values or misshaped conductivity curves controlling the flow of water between soil compartments. Even though the capabilities of CMF to account for preferential flow are still in the development phase (e.g. by following the dual permeability approach in the future) and are not accounted for in the presented setup, our setup will once more highlight potential draw backs of the modeling approaches relying on Richards equation while modeling tracer transport at the hillslope scale.

2.5.2 Setup of CMF

To govern the water fluxes within our system we used the following flow accounting equations: Manning equation for surface water flow; Richards equation for a full 2-D representation of the subsurface flow; Shuttleworth-Wallace modification (Shuttleworth and Wallace, 1985) of the Penman-Monteith method to control evaporation and transpiration; constant Dirichlet boundary conditions representing the groundwater table and the outlet of the system as a rectangular ditch with a depth of 1.5 m. The lower boundary condition is only applicable if groundwater table is >2 m below ground. Preliminary testing revealed that a discretization based on a constant vertical shift (5m) and alternating cell width increasing width depth (ranging from 1.25 cm to 83.75 cm) yielded the optimum model performance with regard to computing time and model quality. Based on 5 m contour lines (derived by local LIDAR measurements with a raster resolution of 1 m; using the Spatial Analyst package of ArcGis 10.1 from ESRI) this hillslope was further separated into 32 cells ranging in size

from 16.6 m² to 2,921.6 m² (Figure 1a). To account for small scale dynamics in the mixing process of stable water isotopes and to be able to run the model with a satisfactory speed, two different horizontal resolutions were used to discretize the each layer with depth. Layers encompassing wick samplers and their upslope neighbor were run with a finer resolution of at least 26 virtual soil layers increasing in thickness with depth (1x1.25 cm, 13 x 2.5 cm, 7 x 5 cm and 5 x 10-50 cm). All other cells were calculated with coarser resolution of at least 14 virtual soil layers (1 x 1.25 cm, 1 x 2.5 cm, 6 x 5 cm, 3 x 10 cm and 3 x 15-83.75 cm). In case the delineated soil type changed within a soil layer it was further subdivided according to Figure 2.

2.5.3 Evapotranspiration

Soil evaporation, evaporation of intercepted water and plant transpiration are calculated separately using the sparse canopy evapotranspiration method by Shuttleworth and Wallace (1985), in its modification by Federer et al. (2003) and Kraft et al. (2011). This approach requires the following parameterizations: soil surface wetness dependent resistance to extract water from the soil (r_{ss}), the plant type dependent bulk stomatal resistance to extract water from the leaves (r_{sc}), the aerodynamic resistances parameters (r_{aa} , r_{as} , and r_{ac}) for sparse crops as described by Shuttleworth and Gurney (1990) and Federer et al. (2003). Whereby r_{ac} (Resistance Canopy Atmosphere) restricts the vapor movement between the leaves and the zero plane displacement height and r_{as} (Resistance Soil Atmosphere) restricts the vapor movement between the soil surface and the zero plane displacement height, which is the height of the mean canopy flow (Shuttleworth and Wallace, 1985; Thom, 1972). The aerodynamic resistances parameter r_{aa} refers to the resistance to move vapor between the zero plane displacement height and the reference height at which the available measurements were made. The necessary assumptions to parameterize the plant (*Setaria sphacelata*) and soil dependent parameters of the Shuttleworth-Wallace equation using the assumptions made by Federer et al. (2003) and Kraft et al. (2011) are listed in Tab. 2.

Furthermore, soil water extraction by evaporation is only affecting the top soil layer and soil water extraction by transpiration is directly controlled by root distribution at a certain soil depth. In accordance with field observations, we assumed an exponential decay of root mass with depth, whereby 90 % of the total root mass is concentrated in the top 0.20 m.

2.5.4 Calibration & Validation

For calibration and validation purposes, we compared measured and modeled stable water isotope signatures of ^2H and ^{18}O of the soil water at each depths of the each wick sampler along the modeled hillslope. Hourly values of the modeled isotopic soil water signature were aggregated to represent the mean isotopic composition in between measurements (≈ 7 days) and are reported in per mil relative to the Vienna Standard Mean Ocean Water (VSMOW) (Craig, 1961).

Literature and measured values for soil and plant parameters (Tab. 1 and Tab. 2) were used to derive the initial values for the calibration process. The initial states for calibration were retrieved by artificially running the model with those initial values for the first 2 years of the available dataset (Tab. 3). The results of this pre-calibration run were used as a starting point for all following calibration runs. A warm up period of 4 month (1.7.2010-31.10.10) preceded the calibration period (1.11.2010-31.10.2011) to adjust the model to the new parameter set. To simulate a wide range of possible flow conditions and limit the degrees of freedom for the possible model realizations we selected K_{sat} and porosity for calibration, while the *Van Genuchten-Mualem* parameters remained constant. To further control the unknown lower boundary condition and complement the calibration process, the suction induced by groundwater depth was changed for each calibration run.

To increase the efficiency of the calibration runs and evenly explore the given parameter space we used the Latin-Hyper cube method presented by McKay et al. (1979). The parameter range of each variable was therefore subdivided into 10 strata and sampled once using uniform distribution. All strata are then randomly matched to get the final parameter sets. A total of 10^5 parameter sets were generated for calibration with varying values for K_{sat} and porosity for all 8 soil types as well as different groundwater depths. An initial trial using 10^4 parameter sets was used to narrow down the parameter range as specified in Tab. 4 for K_{sat} and porosity for all 8 soil types and to 0 m to 100 m for the applicable groundwater depths. The performance of each parameter set was evaluated based on the goodness-of-fit criteria Nash-Sutcliffe efficiency (NSE) and the coefficient of determination (R^2). In addition, the bias was calculated as an indicator for any systematic or structural deviation of the model.

After the calibration the best performing (“behavioral”) models according to a $NSE > 0.15$, an overall bias $< \pm 20.0 \text{ ‰}$ δ^2H and a coefficient of determination $R^2 > 0.65$, were used for the validation period (Tab. 3) using the final states of the calibration period as initial values.

3 Results and discussion

3.1 Model performance

In order to quantify the flow processes we first validated the overall suitability of the chosen model approach and the performance of the parameter sets. The parameter sets best representing the isotope dynamics of δ^2H (as previously defined as best performing (“behavioral”) parameter sets; same accounts for $\delta^{18}O$; results are not shown) during the calibration period, explained the observed variation to even a higher degree during the validation period (average NSE 0.19 for calibration versus 0.35 for validation).

The linear correlation between modeled and observed isotope dynamics of δ^2H , for the best performing parameter sets, were equally good during the calibration and validation period

($R^2 \approx 0.66$) (Tab. 5). The goodness-of-fit criteria for the single best performing parameter set (“best model fit”) shows an R^2 of 0.84 and a NSE of 0.42.

Figure 3 depicts the measured and modeled temporal development of the soil water isotope profile along the studied hillslope as well as the $\delta^2\text{H}$ signature and amount of the incoming rainfall used to drive the model. The measured temporal delay of the incoming signal with depth and the general seasonal pattern of the $\delta^2\text{H}$ signal are captured by the model (Figure 3).

The bias was negative throughout all model realizations during calibration and validation (-15.90 (± 0.11 SD) ‰ $\delta^2\text{H}$ and -16.93 (± 0.34 SD) ‰ $\delta^2\text{H}$ respectively see Tab. 5). Even though the high bias indicates a structural insufficiency of the model, we are confident that this can be mostly attributed by the discrimination of evaporation processes at the soil-atmosphere interface and on the canopy.

Our first hypothesis, that evaporation in general plays only a minor role for the soil water isotope cycle under full vegetation, therefore needs to be reconsidered. Even though hypothesis I has previously been frequently used as an untested assumption for various models (e.g. Vogel et al., 2010; Dohnal et al., 2012) it is rarely scrutinized under natural conditions. A complete rejection of this hypothesis could therefore affect the interpretations in those studies and limit their applicability. However, further studies are needed to support these findings and before finally rejecting this hypothesis. The lateral mixing processes maybe obscuring the observed near surface enrichment and the effect of preferential flow currently not fully accounted for could further hinder the full interpretation of these findings. It still holds true, that:

- the quantitative loss due to surface evaporation on areas with a high leaf area index is more or less insignificant (accounting for 38 mm a^{-1} out of $1,896 \text{ mm a}^{-1}$; $\approx 2\%$; Figure 5),

- the isotopic enrichment due to evaporation for vegetated areas is considerably lower than for non-vegetated areas, as previously shown by Dubbert et al. (2013), and
- high rainfall intensity constrains any near surface isotopic enrichment related to evaporation (Hsieh et al., 1998).

However, our results indicate that the contribution of potential canopy evaporation (accounting for 344 mm a⁻¹ out of 1,896 mm a⁻¹; ≈18%; Figure 5) to enrich the canopy storage and thereby potential throughfall (discriminating ¹⁸O and ²H resulting in more positive isotope signatures) still could partially explain the observed bias.

Nevertheless we presume that fog drip, created by sieving bypassing clouds or radiation fog frequently occurring in the study area Bendix et al. (2008), explains the majority of the observed bias. Depending on the climatic processes generating the fog drip is typically isotopically enriched compared to rainfall, due to different condensation temperatures (Scholl et al., 2009). To get an impression for the magnitude of the possible bias due to throughfall and fog drip compared to direct rainfall, we compare the observed bias with a study presented by Liu et al. (2007) conducted in a tropical seasonal rain forest in China. They observed an average enrichment of +5.5 ‰ δ²H for throughfall and +45.3 ‰ δ²H for fog drip compared to rainfall. Even though the observed enrichment of fog drip and throughfall by Liu et al. (2007) may not be as pronounced within our study area (Goller et al., 2005), the general tendency could explain the modeled bias. According to Bendix et al. (2008) fog and cloud water deposition within our study area contributes 121 mm a⁻¹ to 210 mm a⁻¹ at the respective elevation. Assessing the actual amount fog drip for grass species like *Setaria sphacelata* under natural conditions is challenging and has so far not been accounted for.

In case that further discrimination below the surface would substantially alter the isotope signature, the bias would change continuously with depth. Any subsurface flow reaching wick samplers at lower elevations would then further increase the bias. However, the negative bias

of $-16.19 (\pm 2.80 \text{ SD}) \text{ ‰ } \delta^2\text{H}$ in all monitored top wick samplers during validation accounts for most of the observed bias in the two deeper wick samplers amounting to $-17.32 (\pm 2.47 \text{ SD}) \text{ ‰ } \delta^2\text{H}$. Thus we conclude that the bias is mainly a result of constraints related to modeling surface processes, rather than subsurface ones.

Figure 4 shows the behavior of the chosen parameter sets for saturated hydraulic conductivity and groundwater depth during calibration and validation. The parameter space allows us to assess the range of suitable parameters and their sensitivity over a given parameter range. During calibration the given parameter space could not be constrained to more precise values for all parameters, which in this case should show a lower SD (Tab. 6) and narrower box plots (Figure 4). Especially the K_{sat} values of the soil layers A1, A3 and B1-B3, the porosity for all soil layers (not included in Figure 4) and the groundwater depth depict a low sensitivity over the entire calibration range (indicated by a high SD, wide box plot, and evenly scattered points; Tab. 6 and Figure 4). In particular the low sensitivity of the model towards groundwater depth seems surprising, but can be explained by the potentially low saturated hydraulic conductivities of the lower soil layers C1 and C2 limiting the percolation into the lower soil layers outside of the modeling domain. Even an extreme hydraulic potential, induced by a deep groundwater body, can be limited by a low hydraulic conductivity. None the less it is noteworthy, that no model run without an active groundwater body as a lower boundary condition (groundwater depth $< 2 \text{ m}$) results in a model performance with $\text{NSE} > 0$ (Figure 4). With a groundwater depth above 2 m the boundary condition would serve as a source of water with an undefined isotopic signal and prevent any percolation of water into deeper soil layers outside of the modeling domain. The results are therefore in alignment with the topography of the system indicating an active groundwater body deeper than 2 m and support our second hypothesis which we will further discuss in section 3.2. We identified several parameter combinations showing the same model performance, known as equifinality according to Beven and Freer (2001). The observed equifinality can partially be explained by

counteracting effects of a decreasing K_{sat} and an increasing pore space, or that the water flow is restrained due to lower hydraulic conductivities at adjoining soil layers. Especially for deeper soil layers the interaction between surrounding layers makes it especially difficult to further constrain the given parameter range. Even though the parameter ranges for all behavioral model realizations are not so well confined, the small confidence intervals indicate a certain degree of robustness towards the predicted flows (Figure 3). Additional soil moisture measurements complementing the current setup in the future will allow us to put further confidence in this new approach and the drawn conclusions and allow us to directly compare different calibration targets (i.e. soil moisture vs. soil water isotopic signature).

Initial K_{sat} values based on literature values (see Tab. 1) deviate to a large extend from those derived through the calibration process. This is attributable to the occurrence of preferential flow within the macro pores (Bronstert and Plate, 1997) and the sampling method (PCaps) used to extract the soil water stored in the soil with a matrix potential up to 30 hPa (Landon et al., 1999). It becomes apparent that the mixing processes (based on dispersion and molecular diffusion) are not sufficient to equilibrate the isotope signature over the entire pore space (Landon et al., 1999; Šimůnek et al., 2003) and that the flow through the pore space is not homogenous. Thus the isotopic signature between the sampled pore media and the total modeled pore space differs (Brooks et al., 2010; Hrachowitz et al., 2013; McDonnell and Beven, 2014; McGlynn et al., 2002). The model tries to account for these effects by favoring high K_{sat} values during calibration (McDonnell and Beven, 2014; McGlynn et al., 2002).

Modeling soil water movement under such conditions should therefore be used with caution for models based on Darcy-Richards equation which assume instantaneously homogeneous mixed solutions and uniform flow. In line with the argumentation started by Beven and Germann (1982) and refreshed in their recent paper Beven and Germann (2013) we therefore stress the importance to account for preferential flow processes and overcome the limitation

of Darcy-Richards equation limiting the explanatory power of hydrological models predicting water flow and solute/isotope transport in particular. Like Gerke (2006) and Šimůnek and van Genuchten (2008) among others we therefore seek to implement a dual permeability approach accounting for different flow patterns within the soil pore space (Gerke, 2006; Jarvis, 2007; Šimůnek and van Genuchten, 2008; Vogel et al., 2000, 2006, 2010). In the style of existing 1D models for soil water isotope transport presented by Braud et al. (2005) and Haverd and Cuntz (2010) the inter-soil mixing processes by dispersion and molecular diffusion between different soil pore space compartments shall be accounted for in the future. Based on the presented findings this can now be extended towards the development and application of soil water isotope models under natural conditions. To conclude, the results highlight the general suitability of high resolution soil water isotope profiles to improve our understanding of subsurface water flux separation implemented in current hillslope model applications and to predict subsurface soil water movement.

3.2 Modeled water fluxes

Acknowledging the general suitability of the model to delineate the prevailing flow patterns, we will now compare those to the current hydrological process understanding presented in the introduction. Figure 5 depicts the water balance of the modeled hillslope based on all behavioral model realizations, separating the amount of incoming precipitation into the main flow components: surface runoff and subsurface flow directly entering the stream, percolation to groundwater and evapotranspiration.

Evapotranspiration is further subdivided into transpiration and evaporation from the soil surface and the canopy, whereby evaporation from the canopy is designated as interception losses. Due to the small confidence intervals of the behavioral model runs (see Figure 3) the standard deviations of the model's flow components are relatively small (see Figure 5; standard deviation and mean value was computed without weighting the likelihood value).

The observed order of magnitude for evapotranspiration is in good agreement with previous values of 945 and 876 mm a⁻¹ reported for tropical grasslands by Windhorst et al. (2013a) and Oke (1987), respectively. As previously mentioned the evaporation of 382 mm a⁻¹ is dominated by interception losses accounting for 344 mm a⁻¹. Overall, these results support hypothesis II, which stated that a large share of the incoming precipitation is routed through the deeper soil layer and/or the groundwater body (here 49.7% or 942 mm a⁻¹) before it enters the stream. This also explains the long mean transit time of water of around 1.0 to 3.9 years (Crespo et al., 2012; Timbe et al., 2014) in comparison to the fast runoff reaction time. Well in agreement with our current process understanding and hypothesis III, we can further show that the occurrence of surface runoff (33 mm a⁻¹) due to Hortonian overland flow is less important. For the graphical representation the surface runoff has therefore been combined with subsurface flow (2 mm a⁻¹) to “surface runoff & subsurface flow”, accounting in total for 35 mm a⁻¹ (see Figure 5). A more heterogeneous picture can be depicted if we take a closer look at the flow processes along the studied hillslope and its soil profiles (Figure 6).

Vertical fluxes still dominate the flow of water (Figure 6b), but the near surface lateral flow components predicted by Bückner et al. (2010) become more evident (Figure 6a). Explained by the high saturated hydraulic conductivities in the top soil layers (Tab. 6 and Figure 4) up to 7.3 10³ m³ a⁻¹ are transported lateral between cells in the top soil layer, referring to 15.6% of the total flow leaving the system per year. According to the model results deep lateral flow is minimal accounting only for <0.1% of the total flow. It only occurs on top of the deeper soil horizons with low K_{sat} values. For all behavioral model realizations the groundwater level was >2 m thereby limiting the direct contribution of subsurface flow (2 mm a⁻¹) to the tributary, which had a hydraulic potential of only 1.5 m. Over the entire hillslope the importance of overland flow remains below 3% (≈50 mm a⁻¹), of which a part is re-infiltrating, summing up to total overland flow losses of around 2% at the hillslope scale (35 mm a⁻¹, Figure 5). These

results demonstrate the importance of near surface lateral flow and hence support hypothesis IV.

4 Conclusion

These data and findings support and complement the existing process understanding mainly gained by Goller et al. (2005), Fleischbein et al. (2006) Boy et al. (2008), Bucker et al. (2010), Crespo et al. (2012) and Timbe et al. (2014) to a large extend. Moreover, it was possible to quantify for the first time the relevance of near surface lateral flow generation. The observed dominance of vertical percolation into the groundwater body and thereby the importance of preferential flow seems to be quite common for humid tropical montane regions and has recently been reported by Muñoz-Villers & McDonnell (2012) in a similar environment.

Being aware of the rapid rainfall-runoff response of streams within the catchment of the Rio San Francisco it has been questioned whether and how the system can store water for several years and still release it within minutes. Throughout the last decades several studies have observed similar hydrological behavior especially for steep humid montane regions (e.g. McDonnell (1990) and Muñoz-Villers & McDonnell (2012)) and concepts have been developed to explain this behavior: e.g. piston flow (McDonnell, 1990), kinematic waves (Lighthill and Whitham, 1955), transmissivity feedback (Kendall et al., 1999). Due to the limited depth of observations (max. depth 0.4 m) and the low overall influence of the lateral flows a more exact evaluation of the fate of the percolated water is still not possible. However, we are confident, that in combination with a suitable concept to account for the rapid mobilization of the percolated water into a tributary and experimental findings, further confining possible model realizations an improved version of the current approach, could further close the gap in our current process understanding.

532 Over decades hydrological models which are based on the Richards or Darcy equation (like
533 the one we used), have been tuned to predict quantitative flow processes and mostly been
534 validated using soil moisture data suitable to account for overall storage changes. Our results
535 imply that doing this considerably well does not necessarily mean that the models actually
536 transport the *right* water at the *right* time. Using tracer data to validate models as we did
537 entails that those models now not only have to transport the correct amount but additionally
538 the *right* water. Consequently, the relevance of the correct representation of uneven
539 preferential flow through pipes or macropores, which is misleadingly compensated by high
540 conductivities over the entire pore space within models based on the Richards or Darcy
541 equation, becomes immense. Distinguishing between water flowing in different compartments
542 (e.g. pipes, cracks and macro pores) of the soil is a key task to get a closer and more precise
543 representation of the natural flow processes. Even though the chosen modeling structure
544 currently lacks a sufficient robustness to be widely applicable it highlights the potential and
545 future research directions for soil water isotope modeling.

Acknowledgments

The current study was conducted within the DFG Research Group FOR 816 “Biodiversity and sustainable management of a megadiverse mountain rain forest in south Ecuador” and the follow-up project PAK 825/3. The authors are very grateful for the funding supplied by the German Research Foundation DFG (BR2238/4-2 and BR 2238/14-1) and thank Thorsten Peters of the University of Erlangen for providing meteorological data.

References

- Barthold, F.K., Tyralla, C., Schneider, K., Vaché, K.B., Frede, H.-G., Breuer, L., 2011. How many tracers do we need for end member mixing analysis (EMMA)? A sensitivity analysis. *Water Resour. Res.* 47, W08519. doi:10.1029/2011WR010604
- Beck, E., Makeschin, F., Haubrich, F., Richter, M., Bendix, J., Valerezo, C., 2008. The Ecosystem (Reserva Biológica San Francisco), in: Beck, E., Bendix, J., Kottke, I., Makeschin, F., Mosandl, R. (Eds.), *Gradients in a Tropical Mountain Ecosystem of Ecuador*, Ecological Studies. Springer Berlin Heidelberg, pp. 1–13.
- Bendix, J., Rollenbeck, R., Richter, M., Fabian, P., Emck, P., 2008. Climate, in: Beck, E., Bendix, J., Kottke, I., Makeschin, F., Mosandl, R. (Eds.), *Gradients in a Tropical Mountain Ecosystem of Ecuador*, Ecological Studies. Springer Berlin Heidelberg, pp. 63–73.
- Bendix, J., Silva, B., Roos, K., Göttlicher, D.O., Rollenbeck, R., Nauß, T., Beck, E., 2010. Model parameterization to simulate and compare the PAR absorption potential of two competing plant species. *Int. J. Biometeorol.* 54, 283–295. doi:10.1007/s00484-009-0279-3
- Beven, K., Germann, P., 1982. Macropores and water flow in soils. *Water Resour. Res.* 18, 1311–1325. doi:10.1029/WR018i005p01311
- Beven, K., Germann, P., 2013. Macropores and water flow in soils revisited. *Water Resour. Res.* 49, 3071–3092. doi:10.1002/wrcr.20156
- Bogner, C., Bauer, F., Trancón y Widemann, B., Viñan, P., Balcazar, L., Huwe, B., 2014. Quantifying the morphology of flow patterns in landslide-affected and unaffected soils. *J. Hydrol.* 511, 460–473. doi:10.1016/j.jhydrol.2014.01.063
- Boy, J., Valarezo, C., Wilcke, W., 2008. Water flow paths in soil control element exports in an Andean tropical montane forest. *Eur. J. Soil Sci.* 59, 1209–1227. doi:10.1111/j.1365-2389.2008.01063.x
- Braud, I., Bariac, T., Gaudet, J.P., Vauclin, M., 2005. SiSPAT-Isotope, a coupled heat, water and stable isotope (HDO and H₂18O) transport model for bare soil. Part I. Model description and first verifications. *J. Hydrol.* 309, 277–300. doi:10.1016/j.jhydrol.2004.12.013
- Bronstert, A., 1999. Capabilities and limitations of detailed hillslope hydrological modelling. *Hydrol. Process.* 13, 21–48. doi:10.1002/(SICI)1099-1085(199901)13:1<21::AID-HYP702>3.0.CO;2-4

- Bronstert, A., Plate, E.J., 1997. Modelling of runoff generation and soil moisture dynamics for hillslopes and micro-catchments. *J. Hydrol.* 198, 177–195. doi:10.1016/S0022-1694(96)03306-9
- Brooks, J.R., Barnard, H.R., Coulombe, R., McDonnell, J.J., 2010. Ecohydrologic separation of water between trees and streams in a Mediterranean climate. *Nat. Geosci.* 3, 100–104. doi:10.1038/ngeo722
- Bücker, A., Crespo, P., Frede, H.-G., Breuer, L., 2011. Solute behaviour and export rates in neotropical montane catchments under different land-uses. *J. Trop. Ecol.* 27, 305–317. doi:10.1017/S0266467410000787
- Bücker, A., Crespo, P., Frede, H.-G., Vaché, K., Cisneros, F., Breuer, L., 2010. Identifying Controls on Water Chemistry of Tropical Cloud Forest Catchments: Combining Descriptive Approaches and Multivariate Analysis. *Aquat. Geochem.* 16, 127–149. doi:10.1007/s10498-009-9073-4
- Colman, R.L., Wilson, G.P.M., 1960. The Effect of Floods on Pasture Plants. *Agric. Gaz. NSW* 71, 337–347.
- Craig, H., 1961. Standard for Reporting Concentrations of Deuterium and Oxygen-18 in Natural Waters. *Science* 133, 1833–1834. doi:10.1126/science.133.3467.1833
- Craig, H., Gordon, L.I., 1965. Deuterium and oxygen 18 variations in the ocean and the marine atmosphere, in: Tongiogi, E. (Ed.), *Proceedings of the Conference on the Stable Isotopes in Oceanographic Studies and Paleotemperatures*. Lishi e F., Pisa, Spoleto, Italy, pp. 9–130.
- Crespo, P., Bücker, A., Feyen, J., Vaché, K.B., Frede, H.-G., Breuer, L., 2012. Preliminary evaluation of the runoff processes in a remote montane cloud forest basin using Mixing Model Analysis and Mean Transit Time. *Hydrol. Process.* 26, 3896–3910. doi:10.1002/hyp.8382
- Davies, J., Beven, K., Rodhe, A., Nyberg, L., Bishop, K., 2013. Integrated modeling of flow and residence times at the catchment scale with multiple interacting pathways. *Water Resour. Res.* 49, 4738–4750. doi:10.1002/wrcr.20377
- Dohnal, M., Vogel, T., Šanda, M., Jelínková, V., 2012. Uncertainty Analysis of a Dual-Continuum Model Used to Simulate Subsurface Hillslope Runoff Involving Oxygen-18 as Natural Tracer. *J. Hydrol. Hydromech.* 60, 194–205. doi:10.2478/v10098-012-0017-0
- Dubbert, M., Cuntz, M., Piayda, A., Maguás, C., Werner, C., 2013. Partitioning evapotranspiration – Testing the Craig and Gordon model with field measurements of oxygen isotope ratios of evaporative fluxes. *J. Hydrol.* 496, 142–153. doi:10.1016/j.jhydrol.2013.05.033
- Federer, C.A., Vörösmarty, C., Fekete, B., 2003. Sensitivity of Annual Evaporation to Soil and Root Properties in Two Models of Contrasting Complexity. *J. Hydrometeorol.* 4, 1276–1290. doi:10.1175/1525-7541(2003)004<1276:SOAETS>2.0.CO;2
- Fleischbein, K., Wilcke, W., Valarezo, C., Zech, W., Knoblich, K., 2006. Water budgets of three small catchments under montane forest in Ecuador: experimental and modelling approach. *Hydrol. Process.* 20, 2491–2507. doi:10.1002/hyp.6212
- Frisbee, M.D., Phillips, F.M., Campbell, A.R., Hendrickx, J.M.H., 2010. Modified passive capillary samplers for collecting samples of snowmelt infiltration for stable isotope analysis in remote, seasonally inaccessible watersheds 1: laboratory evaluation. *Hydrol. Process.* 24, 825–833. doi:10.1002/hyp.7523
- Garvelmann, J., Külls, C., Weiler, M., 2012. A porewater-based stable isotope approach for the investigation of subsurface hydrological processes. *Hydrol Earth Syst Sci* 16, 631–640. doi:10.5194/hess-16-631-2012

- Genereux, D.P., Hooper, R.P., 1999. Oxygen and hydrogen isotopes in rainfall-runoff studies, in: Kendall, C., McDonnell, J.J. (Eds.), *Isotope Tracers in Catchment Hydrology*. Elsevier, pp. 319–346.
- Gerke, H.H., 2006. Preferential flow descriptions for structured soils. *J. Plant Nutr. Soil Sci.* 169, 382–400. doi:10.1002/jpln.200521955
- Germann, P., Helbling, A., Vadilonga, T., 2007. Rivulet Approach to Rates of Preferential Infiltration. *Vadose Zone J.* 6, 207. doi:10.2136/vzj2006.0115
- Goller, R., Wilcke, W., Leng, M.J., Tobschall, H.J., Wagner, K., Valarezo, C., Zech, W., 2005. Tracing water paths through small catchments under a tropical montane rain forest in south Ecuador by an oxygen isotope approach. *J. Hydrol.* 308, 67–80. doi:10.1016/j.jhydrol.2004.10.022
- Hacker, J.B., Jones, R.J., 1969. The *Setaria sphacelata* complex - a review. *Trop. Grassl.* 3, 13–34.
- Haverd, V., Cuntz, M., 2010. Soil–Litter–Iso: A one-dimensional model for coupled transport of heat, water and stable isotopes in soil with a litter layer and root extraction. *J. Hydrol.* 388, 438–455. doi:10.1016/j.jhydrol.2010.05.029
- Hrachowitz, M., Savenije, H., Bogaard, T.A., Tetzlaff, D., Soulsby, C., 2013. What can flux tracking teach us about water age distribution patterns and their temporal dynamics? *Hydrol Earth Syst Sci* 17, 533–564. doi:10.5194/hess-17-533-2013
- Hsieh, J.C., Chadwick, O.A., Kelly, E.F., Savin, S.M., 1998. Oxygen isotopic composition of soil water: Quantifying evaporation and transpiration. *Geoderma* 82, 269–293. doi:10.1016/S0016-7061(97)00105-5
- Hunter, J.D., 2007. Matplotlib: A 2D Graphics Environment. *Comput. Sci. Eng.* 9, 90–95. doi:10.1109/MCSE.2007.55
- Huwe, B., Zimmermann, B., Zeilinger, J., Quizhpe, M., Elsenbeer, H., 2008. Gradients and Patterns of Soil Physical Parameters at Local, Field and Catchment Scales, in: Beck, E., Bendix, J., Kottke, I., Makeschin, F., Mosandl, R. (Eds.), *Gradients in a Tropical Mountain Ecosystem of Ecuador, Ecological Studies*. Springer Berlin Heidelberg, pp. 375–386.
- Jarvis, N.J., 2007. A review of non-equilibrium water flow and solute transport in soil macropores: principles, controlling factors and consequences for water quality. *Eur. J. Soil Sci.* 58, 523–546. doi:10.1111/j.1365-2389.2007.00915.x
- Kendall, K.A., Shanley, J.B., McDonnell, J.J., 1999. A hydrometric and geochemical approach to test the transmissivity feedback hypothesis during snowmelt. *J. Hydrol.* 219, 188–205. doi:10.1016/S0022-1694(99)00059-1
- Kirkby, M., 1988. Hillslope runoff processes and models. *J. Hydrol.* 100, 315–339. doi:10.1016/0022-1694(88)90190-4
- Körner, C., Scheel, J., Bauer, H., 1979. Maximum leaf diffusive conductance in vascular plants. *Photosynthetica* 13, 45–82.
- Kraft, P., Multsch, S., Vaché, K.B., Frede, H.-G., Breuer, L., 2010. Using Python as a coupling platform for integrated catchment models. *Adv. Geosci.* 27, 51–56. doi:10.5194/adgeo-27-51-2010
- Kraft, P., Vaché, K.B., Frede, H.-G., Breuer, L., 2011. CMF: A Hydrological Programming Language Extension For Integrated Catchment Models. *Environ. Model. Softw.* 26, 828–830. doi:10.1016/j.envsoft.2010.12.009
- Landon, M.K., Delin, G.N., Komor, S.C., Regan, C.P., 1999. Comparison of the stable-isotopic composition of soil water collected from suction lysimeters, wick samplers, and cores in a sandy unsaturated zone. *J. Hydrol.* 224, 45–54. doi:10.1016/S0022-1694(99)00120-1
- Leibundgut, C., Maloszewski, P., Külls, C., 2011. *Tracers in Hydrology*. John Wiley & Sons, Chichester, UK.

- Lighthill, M.J., Whitham, G.B., 1955. On Kinematic Waves. II. A Theory of Traffic Flow on Long Crowded Roads. *Proc. R. Soc. Lond. Ser. Math. Phys. Sci.* 229, 317–345. doi:10.1098/rspa.1955.0089
- Liu, W.J., Liu, W.Y., Li, P.J., Gao, L., Shen, Y.X., Wang, P.Y., Zhang, Y.P., Li, H.M., 2007. Using stable isotopes to determine sources of fog drip in a tropical seasonal rain forest of Xishuangbanna, SW China. *Agric. For. Meteorol.* 143, 80–91. doi:10.1016/j.agrformet.2006.11.009
- McDonnell, J.J., 1990. A Rationale for Old Water Discharge Through Macropores in a Steep, Humid Catchment. *Water Resour. Res.* 26, 2821–2832. doi:10.1029/WR026i011p02821
- McDonnell, J.J., Beven, K., 2014. Debates—The future of hydrological sciences: A (common) path forward? A call to action aimed at understanding velocities, celerities and residence time distributions of the headwater hydrograph. *Water Resour. Res.* 50, 5342–5350. doi:10.1002/2013WR015141
- McDonnell, J.J., Sivapalan, M., Vaché, K., Dunn, S., Grant, G., Haggerty, R., Hinz, C., Hooper, R., Kirchner, J., Roderick, M.L., Selker, J., Weiler, M., 2007. Moving beyond heterogeneity and process complexity: A new vision for watershed hydrology. *Water Resour. Res.* 43, W07301. doi:10.1029/2006WR005467
- McGlynn, B.L., McDonnell, J.J., Brammer, D.D., 2002. A review of the evolving perceptual model of hillslope flowpaths at the Maimai catchments, New Zealand. *J. Hydrol.* 257, 1–26. doi:10.1016/S0022-1694(01)00559-5
- McKay, M.D., Beckman, R.J., Conover, W.J., 1979. A Comparison of Three Methods for Selecting Values of Input Variables in the Analysis of Output from a Computer Code. *Technometrics* 21, 239–245. doi:10.2307/1268522
- McMillan, H., Tetzlaff, D., Clark, M., Soulsby, C., 2012. Do time-variable tracers aid the evaluation of hydrological model structure? A multimodel approach. *Water Resour. Res.* 48, W05501. doi:10.1029/2011WR011688
- Mertens, J., Diels, J., Feyen, J., Vanderborght, J., 2007. Numerical analysis of Passive Capillary Wick Samplers prior to field installation. *Soil Sci. Soc. Am. J.* 71, 35–42. doi:10.2136/sssaj2006.0106
- Muñoz-Villers, L.E., McDonnell, J.J., 2012. Runoff generation in a steep, tropical montane cloud forest catchment on permeable volcanic substrate. *Water Resour. Res.* 48, W09528. doi:10.1029/2011WR011316
- Oke, T.R., 1987. *Boundary Layer Climates*, 2nd ed. Methuen, London, UK.
- Qu, Y., Duffy, C.J., 2007. A semidiscrete finite volume formulation for multiprocess watershed simulation. *Water Resour. Res.* 43, W08419. doi:10.1029/2006WR005752
- Rhoades, C.C., Eckert, G.E., Coleman, D.C., 2000. Soil carbon differences among forest, agriculture, and secondary vegetation in lower montane Ecuador. *Ecol. Appl.* 10, 497–505. doi:10.1890/1051-0761(2000)010[0497:SCDAFA]2.0.CO;2
- Scholl, M.A., Shanley, J.B., Zegarra, J.P., Coplen, T.B., 2009. The stable isotope amount effect: New insights from NEXRAD echo tops, Luquillo Mountains, Puerto Rico. *Water Resour. Res.* 45, W12407. doi:10.1029/2008WR007515
- Shuttleworth, W.J., Gurney, R.J., 1990. The theoretical relationship between foliage temperature and canopy resistance in sparse crops. *Q. J. R. Meteorol. Soc.* 116, 497–519. doi:10.1002/qj.49711649213
- Shuttleworth, W.J., Wallace, J.S., 1985. Evaporation from sparse crops—an energy combination theory. *Q. J. R. Meteorol. Soc.* 111, 839–855. doi:10.1002/qj.49711146910
- Šimůnek, J., Jarvis, N.J., van Genuchten, M.T., Gärdenäs, A., 2003. Review and comparison of models for describing non-equilibrium and preferential flow and transport in the vadose zone. *J. Hydrol.* 272, 14–35. doi:10.1016/S0022-1694(02)00252-4

- Šimůnek, J., van Genuchten, M.T., 2008. Modeling Nonequilibrium Flow and Transport Processes Using HYDRUS. *Vadose Zone J.* 7, 782–797. doi:10.2136/vzj2007.0074
- Sklash, M.G., Farvolden, R.N., Fritz, P., 1976. A conceptual model of watershed response to rainfall, developed through the use of oxygen-18 as a natural tracer. *Can. J. Earth Sci.* 13, 271–283. doi:10.1139/e76-029
- Soulsby, C., Rodgers, P., Smart, R., Dawson, J., Dunn, S., 2003. A tracer-based assessment of hydrological pathways at different spatial scales in a mesoscale Scottish catchment. *Hydrol. Process.* 17, 759–777. doi:10.1002/hyp.1163
- Stumpp, C., Maloszewski, P., 2010. Quantification of preferential flow and flow heterogeneities in an unsaturated soil planted with different crops using the environmental isotope $\delta^{18}\text{O}$. *J. Hydrol.* 394, 407–415. doi:10.1016/j.jhydrol.2010.09.014
- Tetzlaff, D., McDonnell, J.J., Uhlenbrook, S., McGuire, K.J., Bogaart, P.W., Naef, F., Baird, A.J., Dunn, S.M., Soulsby, C., 2008. Conceptualizing catchment processes: simply too complex? *Hydrol. Process.* 22, 1727–1730. doi:10.1002/hyp.7069
- Thom, A.S., 1972. Momentum, mass and heat exchange of vegetation. *Q. J. R. Meteorol. Soc.* 98, 124–134. doi:10.1002/qj.49709841510
- Timbe, E., Windhorst, D., Crespo, P., Frede, H.-G., Feyen, J., Breuer, L., 2014. Understanding uncertainties when inferring mean transit times of water through tracer-based lumped-parameter models in Andean tropical montane cloud forest catchments. *Hydrol. Earth Syst. Sci.* 18, 1503–1523. doi:10.5194/hess-18-1503-2014
- Uhlenbrook, S., Roser, S., Tilch, N., 2004. Hydrological process representation at the meso-scale: the potential of a distributed, conceptual catchment model. *J. Hydrol.* 291, 278–296. doi:10.1016/j.jhydrol.2003.12.038
- Vogel, H.-J., Cousin, I., Ippisch, O., Bastian, P., 2006. The dominant role of structure for solute transport in soil: experimental evidence and modelling of structure and transport in a field experiment. *Hydrol Earth Syst Sci* 10, 495–506. doi:10.5194/hess-10-495-2006
- Vogel, T., Gerke, H.H., Zhang, R., Van Genuchten, M.T., 2000. Modeling flow and transport in a two-dimensional dual-permeability system with spatially variable hydraulic properties. *J. Hydrol.* 238, 78–89. doi:10.1016/S0022-1694(00)00327-9
- Vogel, T., Sanda, M., Dusek, J., Dohnal, M., Votrubova, J., 2010. Using Oxygen-18 to Study the Role of Preferential Flow in the Formation of Hillslope Runoff. *Vadose Zone J.* 9, 252–259. doi:10.2136/vzj2009.0066
- Weiler, M., McDonnell, J., 2004. Virtual experiments: a new approach for improving process conceptualization in hillslope hydrology. *J. Hydrol.* 285, 3–18. doi:10.1016/S0022-1694(03)00271-3
- Wheeler, M.D., Newman, S.M., Orr-Ewing, A.J., Ashfold, M.N.R., 1998. Cavity ring-down spectroscopy. *J. Chem. Soc. Faraday Trans.* 94, 337–351. doi:10.1039/A707686J
- Windhorst, D., Brenner, S., Peters, T., Meyer, H., Thies, B., Bendix, J., Frede, H.-G., Breuer, L., 2013a. Impacts of Local Land-Use Change on Climate and Hydrology, in: Bendix, J., Beck, E., Bräuning, A., Makeschin, F., Mosandl, R., Scheu, S., Wilcke, W. (Eds.), *Ecosystem Services, Biodiversity and Environmental Change in a Tropical Mountain Ecosystem of South Ecuador, Ecological Studies Vol. 221*. Springer, Berlin, Heidelberg, New York, pp. 275–286.
- Windhorst, D., Waltz, T., Timbe, E., Frede, H.-G., Breuer, L., 2013b. Impact of elevation and weather patterns on the isotopic composition of precipitation in a tropical montane rainforest. *Hydrol. Earth Syst. Sci.* 17, 409–419. doi:10.5194/hess-17-409-2013
- Zimmermann, B., Elsenbeer, H., 2008. Spatial and temporal variability of soil saturated hydraulic conductivity in gradients of disturbance. *J. Hydrol.* 361, 78–95. doi:10.1016/j.jhydrol.2008.07.027

789 Zimmermann, U., Ehhalt, D., Muennich, K.O., 1968. Soil-Water Movement and
790 Evapotranspiration: Changes in the Isotopic Composition of the Water., in: Isotopes in
791 Hydrology. International Atomic Energy Agency, Vienna, pp. 567–585.
792
793

Tables

Tab. 1 Soil physical parameters

Soil code	Clay [%]	Texture Sand [%]	Silt [%]	Porosity [%]	K _{sat} * [m/d]	Van Genuchten- Mualem Parameters	
						α	n
A1 & A1 top	34	17	49	81	0.324	0.641	1.16
A2 & A2 top	19	33	49	63	0.324	0.352	1.13
A3 & A3 top	15	34	51	74	0.324	0.221	1.24
B1	8	16	76	66	0.228	1.046	1.19
B2	15	34	51	59	0.228	0.145	1.13
B3	11	18	70	58	0.228	0.152	1.16
C1	15	45	40	55	0.026	0.023	1.12
C2	45	20	35	47	0.026	0.004	1.17

*K_{sat} values are based on values taken within the proximity of the hillslope under similar land use by Crespo et al. (2012) and Zimmermann and Elsenbeer (2008).

Tab. 2 Plant (*Setaria sphacelata*) and soil dependent parameters used for the Shuttleworth-Wallace equation

Parameter	Symbol	Value	Unit	Used to calculate	Source
Potential soil surface resistance	$r_{ss\ pot}$	500	s m ⁻¹	r_{ss}	Federer et al.(2003)
Max. stomatal conductivity or max. leaf conductance	g_{max}	270	s m ⁻¹	r_{sc}	Körner et al. (1979)
Leaf area index	LAI	3.7	m ² m ⁻²	r_{sc}	Bendix et al. (2010)
Canopy height	h	0.2	m	r_{aa} , r_{ac} & r_{as}	Estimate based on hand measurements
Representative leaf width	w	0.015	m	r_{ac}	
Extinction coefficient for photosynthetically active radiation in the canopy	CR	70	%	r_{sc}	Federer et al.(2003)
Canopy storage capacity	-	0.15	mm LAI ⁻¹	Interception	Federer et al.(2003)
Canopy closure	-	90	%	Throughfall	Estimate based on image evaluation
Albedo	alb	11,7	%	Net radiation	Bendix et al. (2010)

800 **Tab. 3 Modeling periods**

Description	Period		Duration [days]
	Start	End	
Initial states	1 July 2010	30 June 2012	730
Warm up period	1 July 2010	31 October 2010	122
Calibration period	1 November 2010	31 October 2011	364
Validation period	1 November 2011	31 October 2012	365

801

802 **Tab. 4 Soil parameter ranges for the Monte Carlo simulations (assuming uniform distribution for each parameter).**

Soil code	K_{sat} [m d ⁻¹]		Porosity [m ³ m ⁻³]	
	Min.	Max.	Min.	Max.
A1-3 top	0.001	35	0.3	0.9
A1-3	0.001	30	0.3	0.9
B1-3	0.001	12	0.1	0.8
C1-2	0.001	8	0.1	0.8

803

804 **Tab. 5 Model performance during calibration and validation for all behavioral model runs (based on all calibration**
805 **runs with NSE> 0.15, bias< ± 20.0 ‰ δ²H and R² > 0.65). Best modeled fit based on NSE.**

	Calibration 2010-2011		Validation 2011-2012		Best modeled fit
	Mean	SD	Mean	SD	
NSE	0.19	0.008	0.35	0.029	0.42
R ²	0.67	0.008	0.66	0.020	0.84
Bias	-15.90	0.113	-16.93	0.344	-16.16

806

807 **Tab. 6** Parameter ranges used for validation (all calibration runs with NSE>0.15, bias< ± 20.0 ‰ $\delta^2\text{H}$ and $R^2 > 0.65$)
808 and parameter set for the best modeled fit based on NSE.

	Mean	SD	Best modeled fit
K_{sat} [m d^{-1}]			
A1 top	21.8	5.8	20.4
A2 top	11.0	2.3	12.6
A3 top	25.6	6.3	29.6
A1	11.7	6.6	13.5
A2	7.4	2.8	8.9
A3	15.7	6.4	15.3
B1	4.0	2.4	4.0
B2	5.2	3.2	10.5
B3	4.6	2.2	2.5
C1	1.3	1.2	0.6
C2	1.7	1.4	0.1
Porosity [$\text{m}^3 \text{m}^{-3}$]			
A1 top	0.54	0.08	0.44
A2 top	0.56	0.09	0.44
A3 top	0.66	0.09	0.53
A1	0.55	0.08	0.42
A2	0.55	0.09	0.46
A3	0.65	0.09	0.74
B1	0.34	0.09	0.31
B2	0.64	0.09	0.54
B3	0.75	0.09	0.70
C1	0.54	0.09	0.41
C2	0.55	0.09	0.67
Groundwater depth [m]			
	50.5	28.6	76.5

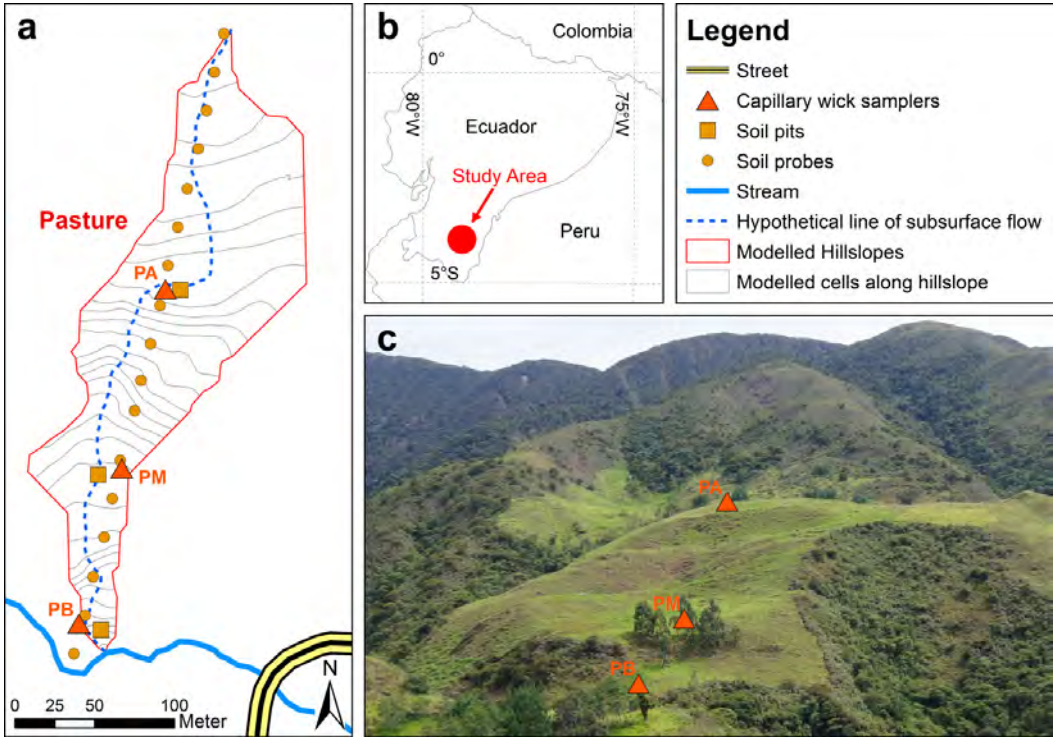


Figure 1 a) Outline of the modeled hillslope and its virtual discretization into cells. b) Location of the study area within Ecuador c) Photograph showing the Location of the wick samplers (P = Pasture and B = bajo/lower level, M = medio/middle level, A = alto/top level sampler).

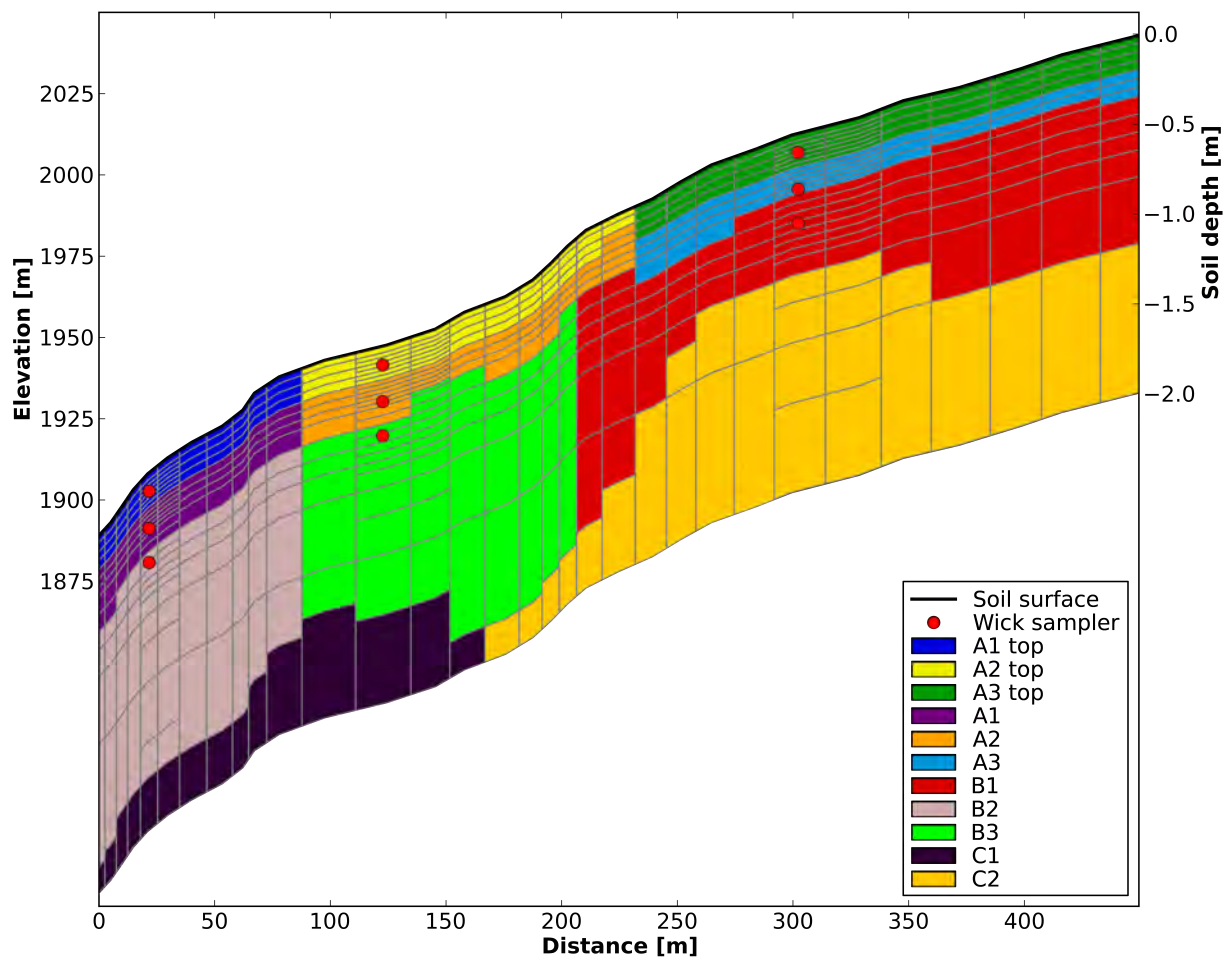


Figure 2 Elevation profile (top black line, left ordinate), succession of soil layer types (color plate) and soil depths assigned to the modeling grid (right ordinate).

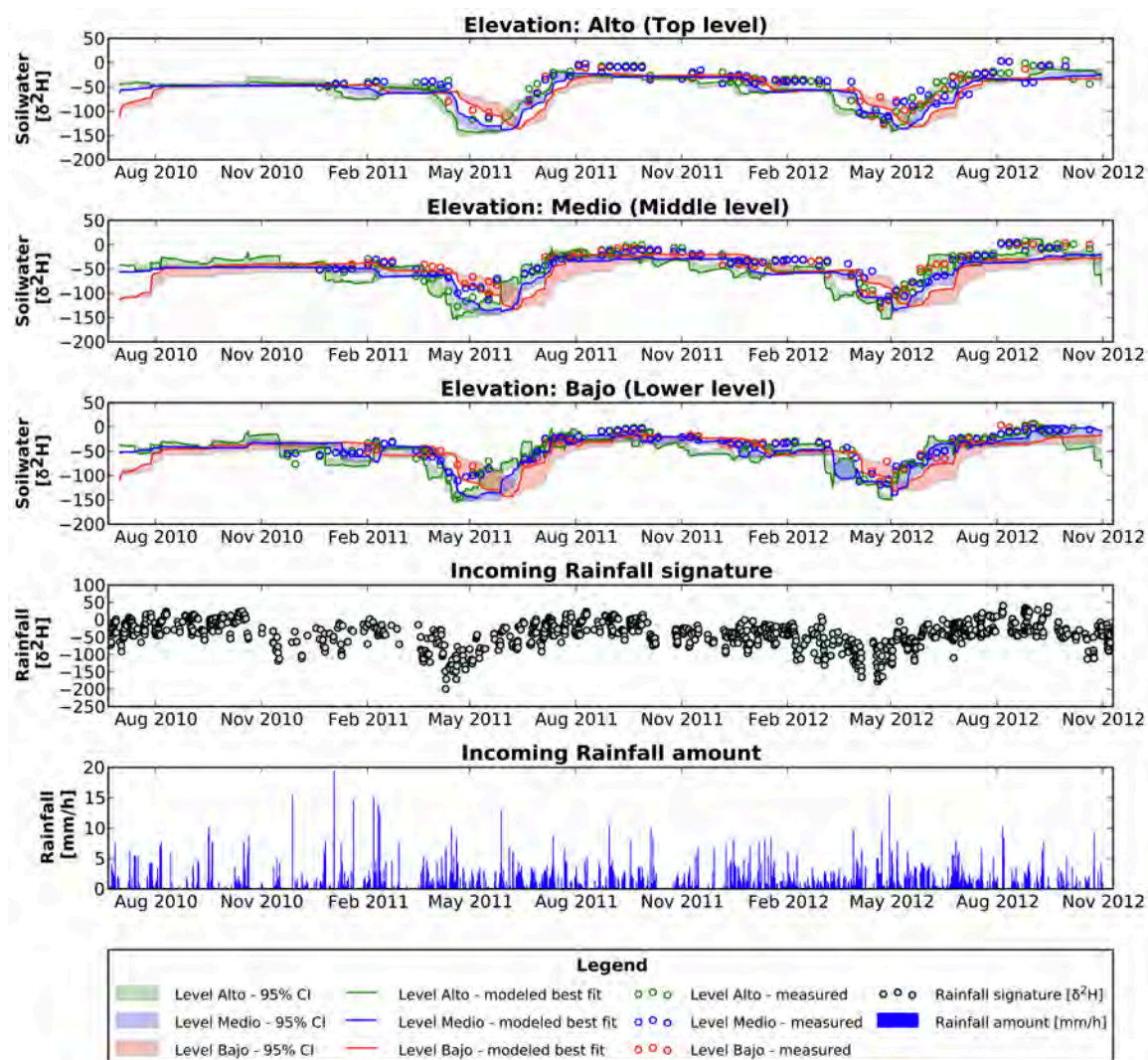


Figure 3 Time series of soil water isotope signatures (Top panels 1-3 for each elevation) for all behavioral model runs with: $\text{NSE} > 0.15$, $\text{bias} < \pm 20.0 \text{ ‰ } \delta^2\text{H}$ and $R^2 > 0.65$ showing the 95% confidence interval (CI; transparent areas) and best modeled fit (solid line) vs. measured values (circles) at all 3 elevations (2,010, 1,949 and 1,904 m a.s.l.) and soil depths below ground (0.10, 0.25 and 0.40 m). Bottom panels 4 and 5, isotopic signature and rainfall amount, respectively.

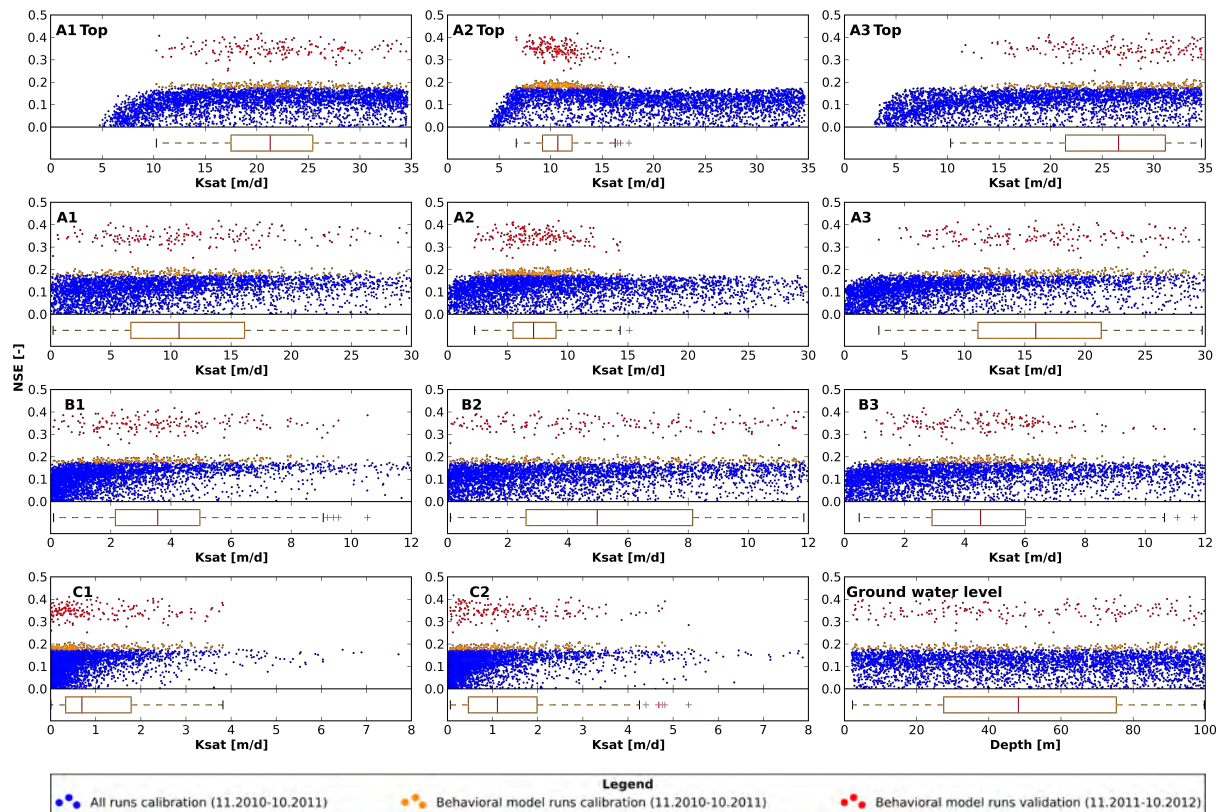


Figure 4 Dotty plots of NSE values (>0.0) during calibration (blue) and for behavioral model runs ($NSE > 0.15$, bias $< \pm 20.0\%$ δ^2H and $R^2 > 0.65$) during calibration (orange) and validation (red) for saturated hydraulic conductivity (K_{sat}) for all soil types and groundwater depth. Box plots show the unweighted parameter distribution of all behavioral model runs ($NSE > 0.15$, bias $< \pm 20.0\%$ δ^2H and $R^2 > 0.65$). Results for soil porosity look similar to those of the groundwater and are therefore not shown.

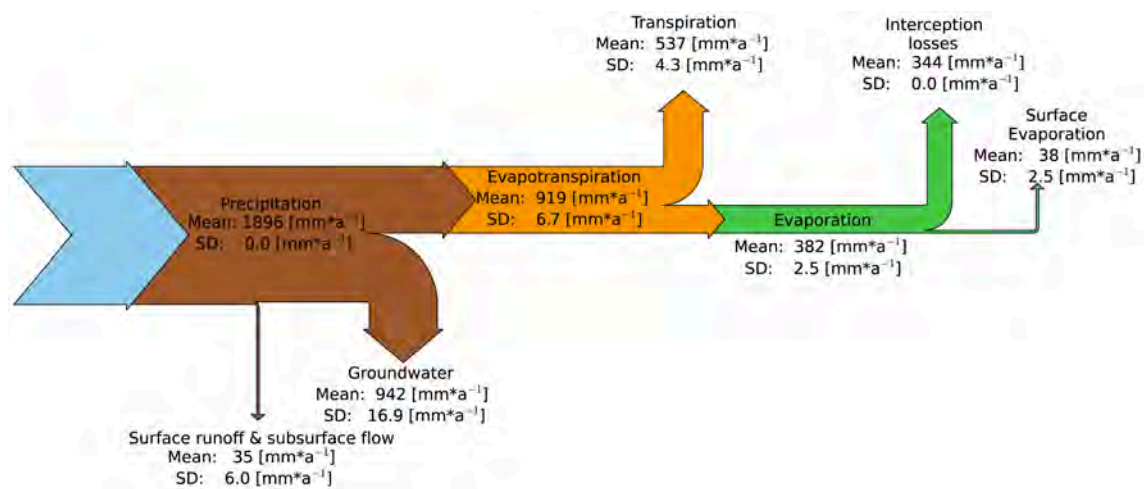


Figure 5 Mean annual flows and standard deviation (SD) of the main flow components at a hillslope scale of all behavioral model runs from 2010-2012.

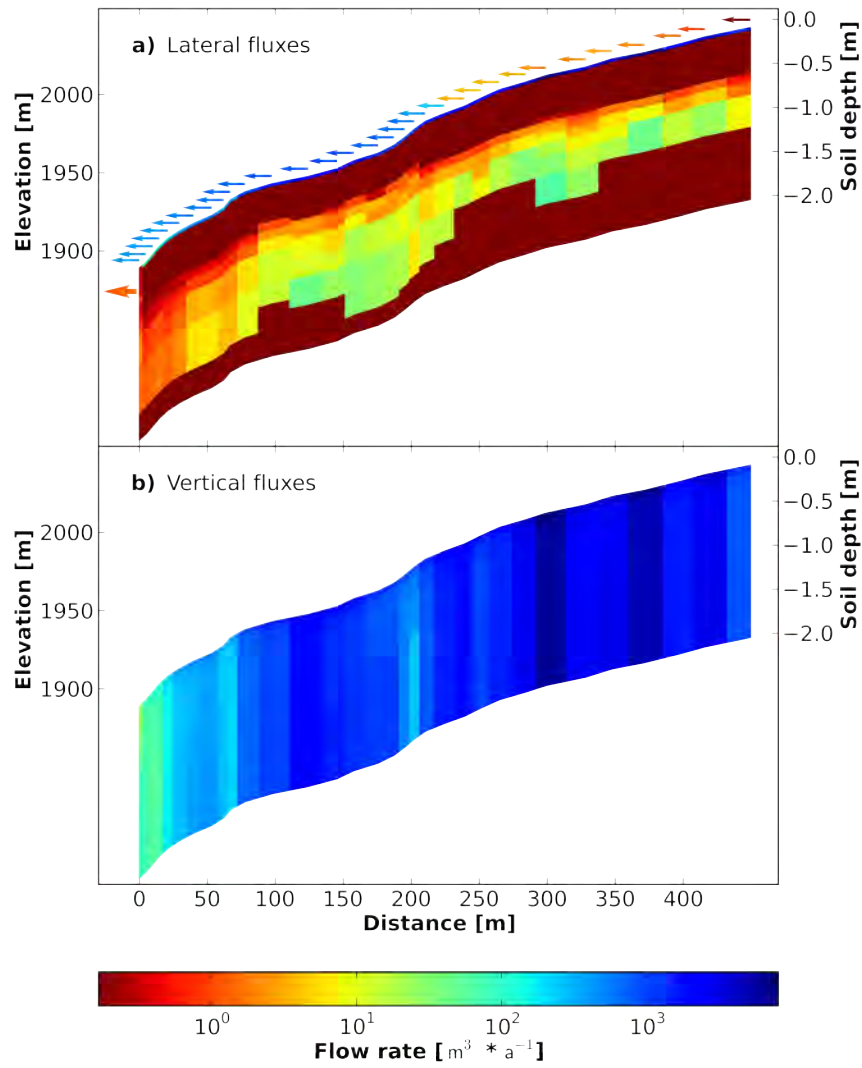


Figure 6 a) Lateral and b) vertical fluxes for the best modeled fit. Arrows indicate the amount of surface runoff and direct contribution to the outlet through subsurface flow. The maximum flow between storage compartments is $7.3 \cdot 10^3 \text{ m}^3 \text{ a}^{-1}$ and the total observed flow leaving as well as entering the system accumulates to $37 \cdot 10^3 \text{ m}^3 \text{ a}^{-1}$.

Revised manuscript
(showing changes)

**Stable water isotope tracing through hydrological models for
disentangling runoff generation processes at the hillslope scale**

David Windhorst¹, Philipp Kraft¹, Edison Timbe^{1,2}, Hans-Georg Frede¹, Lutz Breuer¹

[1] {Institute for Landscape Ecology and Resources Management (ILR), Research Centre for
BioSystems, Land Use and Nutrition (IFZ), Justus-Liebig-Universität Gießen, Germany}
[2] {Grupo de Ciencias de la Tierra y del Ambiente, DIUC, Universidad de Cuenca,
Ecuador}

Correspondence to: D. Windhorst (david.windhorst@umwelt.uni-giessen.de)

Abstract

Hillslopes are the dominant landscape components where incoming precipitation is transferred to become groundwater, streamflow or atmospheric water vapor. However, directly observing flux partitioning in the soil is almost impossible. Hydrological hillslope models are therefore being used to investigate the ~~involved~~ processes involved. Here we report on a modeling experiment using the Catchment Modeling Framework (CMF) where measured stable water isotopes in vertical soil profiles along a tropical mountainous grassland hillslope transect are traced through the model to resolve potential mixing processes. CMF simulates advective transport of stable water isotopes ^{18}O and ^2H based on the Richards equation within a fully distributed 2-D representation of the hillslope. The model successfully replicates the observed temporal pattern of soil water isotope profiles (R^2 0.84 and NSE 0.42). Predicted flows are in good agreement with previous studies. We highlight the importance of groundwater recharge and shallow lateral subsurface flow, accounting for 50% and 16% of the total flow leaving the system, respectively. Surface runoff is negligible despite the steep slopes in the Ecuadorian study region.

1 Introduction

Delineating flow path in a hillslope is still a challenging task (Bronstert, 1999; McDonnell et al., 2007; Tetzlaff et al., 2008; Beven and Germann, 2013). Though a more complete understanding in the partitioning of incoming water to surface runoff, lateral subsurface flow components or percolation allows to better understand, for example, the impact of climate and land use change on hydrological processes. Models are often used to test different rainfall-runoff generation processes and the mixing of water in the soil (e.g. Kirkby, 1988; Weiler and McDonnell, 2004). Due to the prevailing measurement techniques and therefore the available

datasets it has become common practice to base the validation of modeled hillslope flow processes on quantitative data on storage change. In the simplest case, system wide storage changes are monitored by discharge and groundwater level measurements or, on more intensively instrumented hillslopes, the storage change of individual soil compartments is monitored by soil moisture sensors. In the typical 2-D flow regime of a slope, such models bear the necessity not only to account for the vertical but also for the lateral movements of water within the soil (Bronstert, 1999). Quantitative data on storage change in this regard are only suitable to account for the actual change in soil water volume, but not to ~~verify~~ assess the source or flow direction. Knowing tracer compositions of relevant hydrological components along a hillslope allows to ~~predict the~~ account for mixing processes and thereby to ~~verify~~ delineate the actual source of the incoming water. Over the years a number of artificial, e.g. fluorescence tracers like Uranine, and natural tracers, e.g. chloride or stable water isotopes, have emerged. While the application of the artificial tracers is rather limited in space and time (Leibundgut et al., 2011), the latter ones can be used over a wide range of scales (Barthold et al., 2011; Genereux and Hooper, 1999; Leibundgut et al., 2011; Muñoz-Villers and McDonnell, 2012; Soulsby et al., 2003). Stable water isotopes such as oxygen-18 (^{18}O) and hydrogen-2 (^2H) are integral parts of water molecules and consequently ideal tracers of water. Over the last decades isotope tracer studies have proven to provide reliable results on varying scales (chamber, plot, hillslope to catchment scale) and surface types (open water, bare soils, vegetated areas) to delineate or describe flow processes under field experimental or laboratory conditions (Garvelmann et al., 2012; Hsieh et al., 1998; Sklash et al., 1976; Vogel et al., 2010; Zimmermann et al., 1968).

Although the first 1d process orientated models to describe the dynamics of stable water isotope profiles for open water bodies (Craig and Gordon, 1965) and a bit later for soils (Zimmermann et al., 1968) have been developed as early as in the mid 1960~~ies~~, fully distributed 2-D to 3-D hydrological tracer models benefitting from the additional

information to be gained by stable water isotopes are still in their early development stages (Davies et al., 2013) or use strong simplifications of the flow processes (e.g. TAC^D using a kinematic wave approach; Uhlenbrook et al., 2004). This can be attributed to the high number of interwoven processes affecting the soil water isotope fluxes not only in the soil's liquid phase but also in its vapor phase. The more process based 1d models (Braud et al., 2005; Haverd and Cuntz, 2010) therefore simultaneously solve the heat balance and the mass balance simultaneously for the liquid and the vapor phase and are thereby describing the:

- convection and molecular diffusion in the liquid and vapor phase,
- equilibrium fractionation between liquid and vapor phase,
- fractionation due to evaporation, and
- non-fractionated flux due to percolation and transpiration.

To obtain and compute the data required to apply ~~these~~ kind of models beyond the plot scale is still challenging. However, due to emerging measuring techniques the availability of sufficient data becomes currently more realistic. Increasing computational power and especially the cavity ring-down spectroscopy (CRDS) - a precise and cost effective method to analyze the signature of stable water isotopes (Wheeler et al., 1998) - promise progress.

Hence, it is tempting to investigate the suitability of isotope tracers to delineate hydrological flow paths using a more physical modeling approach. Recent research in this direction includes the work of McMillan et al. (2012) and Hrachowitz et al. (2013) using chloride as a tracer to study the fate of water in catchments in the Scottish Highlands. Even though some processes affecting the soil water isotope transport are still represented in a simplified manner or could be, due to their limited effect/importance of the respective process within the given study site, omitted, this approach allows us to determine the potential of soil water isotope modeling in catchment hydrology and highlight future need for research. Hence, it is tempting to investigate the suitability of isotope tracers to delineate hydrological flow paths using a

~~constrained, more complex modeling approach. Constrained in the way, that relevant processes could either be omitted, due to limited effect/importance of the respective process, or easily be incorporated into an existing modeling framework. To verify and validate the hydrological processes and the inferred results of a 2d model setup using the Catchment Modeling Framework (CMF; Kraft et al., 2011), we choose a study site within a catchment for which already a principle process understanding about prevailing soil water flows existed.~~

This study is conducted in a 75 km² montane rain forest catchment in south Ecuador, the upper part of the Rio San Francisco, which has been under investigation since 2007 ([Bogner et al., 2014](#); [Boy et al., 2008](#); [Bücker et al., 2011](#); [Crespo et al., 2012](#); [Fleischbein et al., 2006](#); [Goller et al., 2005](#); [Timbe et al., 2014](#); [Windhorst et al., 2013b](#)). The findings of those studies (briefly synthesized in section 2.3) will a) ease the setup of chosen model, b) let us define suitable boundary conditions for the chosen modeling approach and c) serve as a reference for the delineated flow bath. The additional information from previous studies conducted in the study area, will therefore highlight the potential of this new model approach to delineate hydrological flow paths under natural conditions and support our preliminary hydrological process understanding retrieved from more classical methods conducted in the past.~~and for which a number of studies on forested micro catchments (≈ 0.1 km²) are at hand . Studies on both scales identify the similar hydrological processes to be active within the study area, which shall be briefly described in the following section.~~

~~Studies on the micro scale (Boy et al., 2008; Goller et al., 2005), supported by solute data and end member mixing analysis at the meso scale (Bücker et al., 2011; Crespo et al., 2012), showed that under presaturated conditions of the mineral soil fast ‘organic horizon flow’ in forested catchments dominates during discharge events. Due to an abrupt change in saturated hydraulic conductivity (K_{sat}) between the organic (38.9 m d^{-1}) and the near surface mineral layer (0.15 m d^{-1}) this ‘organic horizon flow’ can contribute up to 78% to the total discharge~~

112 during storm events (Fleischbein et al., 2006; Goller et al., 2005). However, the overall
113 importance of this ‘organic horizon flow’ is still disputable, because the rainfall intensity
114 rarely gets close to such a high saturated hydraulic conductivity. In 95% of the measured
115 rainfall events between Jun 2010 and Oct 2012 the intensity was below 0.1 m d^{-1} ($\approx 4.1 \text{ mm h}^{-1}$)
116 and was therefore 15 times lower than the saturated hydraulic conductivity of the mineral
117 soil layer below the organic layer under forest vegetation and around 30 times lower than the
118 saturated hydraulic conductivity of the top soil under pasture vegetation (Zimmermann and
119 Elsenbeer, 2008; Crespo et al., 2012). The same conclusion holds true for the occurrence of
120 surface runoff due to infiltration access on pasture (lacking a significant organic layer). Solely
121 based on rainfall intensities surface runoff is therefore relatively unlikely to contribute to a
122 larger extend in rainfall runoff generation. When and to which extent a presaturated
123 subsurface would still trigger surface runoff on pastures therefore remains to be investigated.

124 Bückner et al. (2010) and Timbe et al. (2014) could show that base flow on the other hand has
125 a rather large influence on the annual discharge volume across different land use types,
126 accounting for >70% and >85%, respectively. These findings are also supported by the long
127 mean transit time (MTT) of the base flow for different sub-catchments of the Rio San
128 Francisco, varying according to Timbe et al. (2014) between 2.1 and 3.9 years. Accordingly,
129 the current findings confirm that the base flow —originating from deeper mineral soil and
130 bedrock layers—is dominating the overall hydrological system in the study area (Crespo et al.,
131 2012; Goller et al., 2005). Apart from this dominating source of base flow, Bückner et al.
132 (2010) identified near surface lateral flow as a second component to be relevant for the
133 generation of base flow for pasture sites. Within this catchment we selected a hillslope with a
134 distinct drainage area and nearly homogenous land-use and established an experimental
135 sampling scheme to monitor the isotopic signatures of the soil water of three soil profiles
136 using passive capillary fiberglass wick samplers (PCaps). Based on the proposed modeling
137 approach a 2-D virtual hillslope representation of this hillslope was then implemented using

the Catchment Modeling Framework (CMF; Kraft et al., 2011). Due to the necessity to mix the flows in accordance to the observed soil water isotope signatures we are confident, that the degree of certainty for the modeled flow path will be higher, than for conventional modeling approaches relying solely on quantitative information to evaluate the modeled data. Replacing the calibration target bears now the necessity to mix the right amount and signature of any given flow component, whereas the quantitative change only relies on the actual amount of water leaving or entering any given compartment. We will quantify the following flow components to disentangle the runoff generation processes: surface runoff, lateral subsurface flow in the vadose zone and percolation to groundwater. The lateral subsurface flow will be further subdivided into near surface lateral flow and deep lateral flow.

To validate the chosen modeling approach and assess our process understanding we tested the following hypotheses:

- I. Under the given environmental conditions - high precipitation and humidity - (Bendix et al., 2008) and full vegetation cover (Dohnal et al., 2012; Vogel et al., 2010) only non-fractionating and advective water transport of isotopes is relevant. Gaseous advection and diffusive process in the gaseous as well as the liquid phase and the enrichment due to evaporation are negligible; hence the stable water isotopes behave like a conservative tracer.
- II. Large shares of the soil water percolate to deeper horizons, thereby creating long mean transit times (MTT) (Crespo et al., 2012; Timbe et al., 2014).
- III. Due to the high saturated conductivities of the top soil layers the generation occurrence of Hortonian overland flow ~~surface runoff~~ is unlikely to have an important contribution to the observed flows (Crespo et al., 2012)

IV. Fast near surface lateral flow contributes essentially to downhill water flows and play a relevant role to understand the overall hydrological system (Bücker et al., 2010).

2 Materials and Methods

2.1 Study area

The hillslope under investigation is located within the catchment of the Rio San Francisco in South Ecuador (3°58'30"S, 79°4'25"W) at the eastern outskirts of the Andes and encompasses an area of 75 km². Close to the continental divide the landscape generally follows a continuous eastward decline towards the lowlands of the Amazon basin (Figure 1b). Due to the high altitudes (1720-3155m a.s.l.), the deeply incised valleys (slopes are on average 25°-40° over the entire watershed), the low population density and the partly protected areas of the Podocarpus National Park, the human impact within the catchment is relatively low. The southern flanks of the Rio San Francisco are covered by an almost pristine tropical mountain cloud forest and lie mostly within the Podocarpus National Park. At lower elevations the northern flanks have mostly been cleared by natural or slash-and-burn fires during the last decades and are now partially used for extensive pasture (*Setaria sphacelata* Schumach.), reforestation sites (*Pinus patula*), are covered by shrubs or invasive weeds (especially tropical bracken fern; *Pteridium aquilinum* L.). The climate exhibits a strong altitudinal gradient creating relatively low temperatures and high rainfall amounts (15.3°C and 2000 mm a⁻¹ at 1960 m a.s.l. to 9.5°C and >6000 mm a⁻¹ at 3180 m a.s.l.) with the main rainy season in the austral winter (Bendix et al., 2008). A comprehensive description of the soils, climate, geology and land use has been presented by Beck et al. (2008), Bendix et al. (2008) and Huwe et al. (2008).

2.2 Experimental hillslope

To test our understanding of hydrological processes within the study area we choose a hillslope with a nearly homogenous land use (Figure 1). It is located on an extensive pasture site with low intensity grazing by cows and dominated by *Setaria sphacelata*. *Setaria sphacelata* is an introduced tropical C4 grass species that forms a dense tussock grassland with a thick surface root mat (Rhoades et al., 2000). This grass is accustomed to high annual rainfall intensities ($>750 \text{ mm a}^{-1}$), has a low drought resistance and tolerates water logging to a greater extent than other tropical grass types (Colman and Wilson, 1960; Hacker and Jones, 1969). The hillslope has a drainage area of 0.025 km^2 , a hypothetical length of the subsurface flow of 451 m and an elevation gradient of 157 m with an average slope of 19.2° . The soil catena of the slope was recorded by Pürckhauer sampling and soil pits. To investigate the passage of water through the hillslope a series of three wick sampler has been installed along the line of subsurface flow.

Climate forcing data with an hourly resolution of precipitation, air temperature, irradiation, wind speed and relative humidity was collected by the nearby (400 m) climate station “ECSF” at similar elevation. Isotopic forcing data was collected manually for every rainfall event from Oct 2010 until Dec 2012 using a Ø25 cm funnel located in close proximity of the chosen hillslope at 1900 m a.s.l. (Timbe et al., 2014). To prevent any isotopic fractionation after the end of a single rainfall event (defined as a period of 30min without further rainfall) all samples were directly sealed with a lid and stored within a week in 2mL amber glass bottles for subsequent analysis of the isotopic signature as described in section 2.4.1 (all samples $<2\text{ml}$ where discarded).

2.3 Current process understanding at the catchment scale

The catchment of the Rio San Francisco has been under investigation since 2007 (Bücker et al., 2011; Crespo et al., 2012; Timbe et al., 2014; Windhorst et al., 2013b) and was

complemented by a number of studies on forested micro catchments ($\approx 0.1 \text{ km}^2$) within this catchment (Bogner et al., 2014; Boy et al., 2008; Fleischbein et al., 2006; Goller et al., 2005). Studies on both scales identify the similar hydrological processes to be active within the study area.

Studies on the micro scale (Boy et al., 2008; Goller et al., 2005), supported by solute data and end member mixing analysis at the meso scale (Bücker et al., 2011; Crespo et al., 2012),

~~showed that fast ‘organic horizon flow’ in forested catchments dominates during discharge events, if the mineral soils are water saturated prior to the rainfall. showed that under presaturated conditions of the mineral soil fast ‘organic horizon flow’ in forested catchments dominates during discharge events.~~ Due to an abrupt change in saturated hydraulic

conductivity (K_{sat}) between the organic (38.9 m d^{-1}) and the near-surface mineral layer (0.15 m d^{-1}) this ‘organic horizon flow’ can contribute up to 78% to the total discharge during storm events (Fleischbein et al., 2006; Goller et al., 2005). However, the overall importance of this ‘organic horizon flow’ is still disputable, because the rainfall intensity rarely gets close to such a high saturated hydraulic conductivity. In 95% of the measured rainfall events between Jun 2010 and Oct 2012 the intensity was below 0.1 m d^{-1} ($\approx 4.1 \text{ mm h}^{-1}$) and was therefore 15 times lower than the saturated hydraulic conductivity of the mineral soil layer below the organic layer under forest vegetation and around 30 times lower than the saturated hydraulic conductivity of the top soil under pasture vegetation (Zimmermann and Elsenbeer, 2008; Crespo et al., 2012). The same conclusion holds true for the occurrence of surface runoff due to infiltration access on pasture (lacking a significant organic layer). Solely based on rainfall intensities surface runoff is therefore relatively unlikely to contribute to a larger

extend in rainfall-runoff generation. The reported K_{sat} values are based on measurements of 250 cm^3 undisturbed soil core samples vertically extracted from the center of each respective layer. Due to the chosen sampling method and the limited size of the soil cores the effective

saturated hydraulic conductivity will be even higher and can vary for the horizontal flow component. When and to which extent a subsurface saturated prior the rainfall event ~~presaturated subsurface~~ would still trigger surface runoff on pastures therefore remains to be investigated.

Bücker et al. (2010) and Timbe et al. (2014) could show that base flow on the other hand has a rather large influence on the annual discharge volume across different land use types, accounting for >70% and >85%, respectively. These findings are also supported by the long mean transit time (MTT) of the base flow for different sub-catchments of the Rio San Francisco in comparison to the fast runoff reaction times, varying according to Timbe et al. (2014) between 2.1 and 3.9 years. Accordingly, the current findings confirm that the base flow – originating from deeper mineral soil and bedrock layers– is dominating the overall hydrological system in the study area (Crespo et al., 2012; Goller et al., 2005). Apart from this dominating source of base flow, Bücker et al. (2010) identified near surface lateral flow as a second component to be relevant for the generation of base flow for pasture sites.

2.4 Measurements

2.4.1 Passive capillary fiberglass wick samplers (PCaps)

We installed *passive capillary fiberglass wick samplers* (PCaps; short *wick samplers*, designed according to Mertens et al. (2007)) as soil water collectors at three locations along an altitudinal transects under pasture vegetation in three soil depths. PCaps maintain a fixed tension based on the type and length of wick (Mertens et al., 2007), require low maintenance and are most suitable to sample mobile soil water without altering its isotopic signature (Frisbee et al., 2010; Landon et al., 1999). We used woven and braided 3/8-inch fiberglass wicks (Amatex Co. Norristown, PA, US). 0.75 m of the 1.5 m wick was unraveled and placed over a 0.30 x 0.30 x 0.01 m square plastic plate, covered with fine grained parent soil material and then set in contact with the undisturbed soil.

Every collector was designed to sample water from three different soil depths (0.10, 0.25 and 0.40 m) with the same suction, all having the same sampling area of 0.09 m², wick type, hydraulic head of 0.3 m (vertical distance) and total wick length of 0.75 m. To simplify the collection of soil water the wick samplers drained into bottles placed inside a centralized tube with an inner diameter of 0.4 m and a depth of 1.0 m. To avoid any unnecessary alterations of the natural flow above the extraction area of the wick sampler the centralized tube was placed downhill and the plates were evenly spread uphill around the tube. A flexible silicon tube with a wall thickness of 5 mm was used to house the wick and to connect it to the 2 L sampling bottles storing the collected soil water. The silicon tube prevents evaporation and contamination of water flowing through the wick. Weekly bulk samples were collected over the period from Oct 2010 until Dec 2012 if the sample volume exceeded 2 mL. Soil water and the previously mentioned precipitation samples are ~~and~~ analyzed using a cavity ring down spectrometer (CRDS) with a precision of 0.1 per mil for ¹⁸O and 0.5 for ²H (Picarro L1102-i, CA, US).

2.4.2 Soil survey

The basic soil and soil hydraulic properties for each distinct soil layer along the hillslope were investigated up to a depth of 2 m. Pürckhauer sampling for soil texture and succession of soil horizons was done every 25 m, while every 100 m soil pits were dug for sampling soil texture, soil water retention curves (pF-curves), porosity and succession of soil horizons. The results were grouped into 8 classes (Tab. 1) and assigned to the modeling mesh as shown in Figure 2. Retention curves (pF-curves) were represented by the *Van Genuchten-Mualem* function using the parameters α and n .

All soils developed from the same parent material (clay schist) and are classified as Haplic Cambisol with varying soil thickness. Soil thickness generally increased downhill varying between 0.8 m and 1.8 m in depressions. Clay illuviation was more pronounced in the upper

part of the hillslope (higher gradient in clay content) indicating lower conductivities in deeper soil layers.

2.5 Modeling

2.5.1 The Catchment Modeling Framework (CMF)

The Catchment Modeling Framework (CMF) developed by Kraft et al. (2011) is a modular hydrological model based on the concept of finite volume method introduced by Qu and Duffy (2007). Within CMF those finite volumes (e.g. soil water storages, streams) are linked by a series of flow accounting equations (e.g. Richards or Darcy equation) to a one to three dimensional representation of the real world hydrological system. The flexible set up of CMF and the variety of available flow accounting equations allows customizing the setup as required in the presented study. In addition to the water fluxes, the advective movement of tracers within a given system can be accounted for by CMF, making this modeling framework especially suitable to be used in our tracer study (Kraft et al., 2010). Starting with Beven and Germann (1982) scientist over the last decades frequently argued that Richards equation like flow accounting equation assuming a time invariant and well mixed homogenous flow of water through the soil pore space, similar to those currently implemented in CMF, are not suitable to account for preferential flow relevant for modeling tracer transport (Brooks et al., 2010; Germann et al., 2007; Hrachowitz et al., 2013; Stumpp and Maloszewski, 2010). Being developed for the quantitative representation of soil water flow this equations cannot distinguish between water stored in different soil compartments (namely the soil matrix and macro pores) and only artificially try to represent macropore flow e.g. by favoring high saturated conductivity values or misshaped conductivity curves controlling the flow of water between soil compartments. Even though the capabilities of CMF to account for preferential flow are still in the development phase (e.g. by following the dual permeability approach in the future) and are not accounted for in the presented setup, our setup will once more

highlight potential draw backs of the modeling approaches relying on Richards equation while modeling tracer transport at the hillslope scale.

2.5.2 Setup of CMF

To govern the water fluxes within our system we used the following flow accounting equations: Manning equation for surface water flow; Richards equation for a full 2-D representation of the subsurface flow; Shuttleworth-Wallace modification (Shuttleworth and Wallace, 1985) of the Penman-Monteith method to control evaporation and transpiration; constant Dirichlet boundary conditions representing the groundwater table and the outlet of the system as a rectangular ditch with a depth of 1.5 m. The lower boundary condition is only applicable if groundwater table is >2 m below ground. Preliminary testing revealed that a discretization based on a constant vertical shift (5m) and alternating cell width increasing width depth (ranging from 1.25 cm to 83.75 cm) yielded the optimum model performance with regard to computing time and model quality. Based on 5 m contour lines (derived by local LIDAR measurements with a raster resolution of 1 m; using the Spatial Analyst package of ArcGis 10.1 from ESRI) this hillslope was further separated into 32 cells ranging in size from 16.6 m² to 2,921.6 m² (Figure 1a). To account for small scale dynamics in the mixing process of stable water isotopes and to be able to run the model with a satisfactory speed, two different horizontal resolutions were used to discretize the each layer with depth. Layers encompassing wick samplers and their upslope neighbor were run with a finer resolution of at least 26 virtual soil layers increasing in thickness width depth (1x1.25 cm, 13 x 2.5 cm, 7 x 5 cm and 5 x 10-50 cm). All other cells were calculated with coarser resolution of at least 14 virtual soil layers (1 x 1.25 cm, 1 x 2.5 cm, 6 x 5 cm, 3 x 10 cm and 3 x 15-83.75 cm). In case the delineated soil type changed within a soil layer it was further subdivided according to Figure 2.

2.5.3 Evapotranspiration

Soil evaporation, evaporation of intercepted water and plant transpiration are calculated separately using the sparse canopy evapotranspiration method by Shuttleworth and Wallace (1985), in its modification by Federer et al. (2003) and Kraft et al. (2011). This approach requires the following parameterizations: soil surface wetness dependent resistance to extract water from the soil (r_{ss}), the plant type dependent bulk stomatal resistance to extract water from the leaves (r_{sc}), the aerodynamic resistances parameters (r_{aa} , r_{as} , and r_{ac}) for sparse crops as described by Shuttleworth and Gurney (1990) and Federer et al. (2003). Whereby r_{ac} (Resistance Canopy Atmosphere) restricts the vapor movement between the leaves and the zero plane displacement height and r_{as} (Resistance Soil Atmosphere) restricts the vapor movement between the soil surface and the zero plane displacement height, which is the height of the mean canopy flow (Shuttleworth and Wallace, 1985; Thom, 1972). The aerodynamic resistances parameter r_{aa} refers to the resistance to move vapor between the zero plane displacement height and the reference height at which the available measurements were made. The necessary assumptions to parameterize the plant (*Setaria sphacelata*) and soil dependent parameters of the Shuttleworth-Wallace equation using the assumptions made by Federer et al. (2003) and Kraft et al. (2011) are listed in Tab. 2.

Furthermore, soil water extraction by evaporation is only affecting the top soil layer and soil water extraction by transpiration is directly controlled by root distribution at a certain soil depth. In accordance with field observations, we assumed an exponential decay of root mass with depth, whereby 90 % of the total root mass is concentrated in the top 0.20 m.

2.5.4 Calibration & Validation

For calibration and validation purposes, we compared measured and modeled stable water isotope signatures of ^2H and ^{18}O of the soil water at each depths of the each wick sampler

along the modeled hillslope. Hourly values of the modeled isotopic soil water signature were aggregated to represent the mean isotopic composition in between measurements (≈ 7 days) and are reported in per mil relative to the Vienna Standard Mean Ocean Water (VSMOW) (Craig, 1961).

Literature and measured values for soil and plant parameters (Tab. 1 and Tab. 2) were used to derive the initial values for the calibration process. The initial states for calibration were retrieved by artificially running the model with those initial values for the first 2 years of the available dataset (Tab. 3). The results of this pre-calibration run were used as a starting point for all following calibration runs. A warm up period of 4 month (1.7.2010-31.10.10) preceded the calibration period (1.11.2010-31.10.2011) to adjust the model to the new parameter set. To simulate a wide range of possible flow conditions and limit the degrees of freedom for the possible model realizations we selected K_{sat} and porosity for calibration, while the *Van Genuchten-Mualem* parameters remained constant. To further control the unknown lower boundary condition and complement the calibration process, the suction induced by groundwater depth was changed for each calibration run.

To increase the efficiency of the calibration runs and evenly explore the given parameter space we used the Latin-Hyper cube method presented by McKay et al. (1979). The parameter range of each variable was therefore subdivided into 10 strata and sampled once using uniform distribution. All strata are then randomly matched to get the final parameter sets. A total of 10^5 parameter sets were generated for calibration with varying values for K_{sat} and porosity for all 8 soil types as well as different groundwater depths. An initial trial using 10^4 parameter sets was used to narrow down the parameter range as specified in Tab. 4 for K_{sat} and porosity for all 8 soil types and to 0 m to 100 m for the applicable groundwater depths. The performance of each parameter set was evaluated based on the goodness-of-fit criteria

Nash-Sutcliffe efficiency (NSE) and the coefficient of determination (R^2). In addition, the bias was calculated as an indicator for any systematic or structural deviation of the model.

After the calibration the best performing (“behavioral”) models according to a $NSE > 0.15$, an overall bias $< \pm 20.0 \text{ ‰}$ $\delta^2\text{H}$ and a coefficient of determination $R^2 > 0.65$, were used for the validation period (Tab. 3) using the final states of the calibration period as initial values.

3 Results and discussion

3.1 Model performance

In order to quantify the flow processes we first validated the overall suitability of the chosen model approach and the performance of the parameter sets. The parameter sets best representing the isotope dynamics of $\delta^2\text{H}$ (as previously defined as best performing (“behavioral”) parameter sets; same accounts for $\delta^{18}\text{O}$; results are not shown) during the calibration period, explained the observed variation to even a higher degree during the validation period (average NSE 0.19 for calibration versus 0.35 for validation).

The linear correlation between modeled and observed isotope dynamics of $\delta^2\text{H}$, for the best performing parameter sets, were equally good during the calibration and validation period ($R^2 \approx 0.66$) (Tab. 5). The goodness-of-fit criteria for the single best performing parameter set (“best model fit”) shows an R^2 of 0.84 and a NSE of 0.42.

Figure 3 depicts the measured and modeled temporal development of the soil water isotope profile along the studied hillslope as well as the $\delta^2\text{H}$ signature and amount of the incoming rainfall used to drive the model. The measured temporal delay of the incoming signal with depth and the general seasonal pattern of the $\delta^2\text{H}$ signal are captured by the model (Figure 3).

The bias was negative throughout all model realizations during calibration and validation (-15.90 (± 0.11 SD) ‰ $\delta^2\text{H}$ and -16.93 (± 0.34 SD) ‰ $\delta^2\text{H}$ respectively see Tab. 5). Even though the high bias indicates a structural insufficiency of the model, we are confident that this can

be mostly attributed by the discrimination of evaporation processes at the soil-atmosphere interface and on the canopy.

Our first hypothesis ~~I~~, that evaporation in general plays only a minor role for the soil water isotope cycle under full vegetation, therefore needs to be reconsidered. Even though hypothesis I has previously been frequently used as an untested assumption for various models (e.g. Vogel et al., 2010; Dohnal et al., 2012) it is rarely scrutinized under natural conditions. A complete rejection of ~~Completely rejecting~~ this hypothesis could therefore affect the interpretations in those studies and limit their applicability ~~fundamentally~~. However, further studies are needed to support these findings and before finally rejecting this hypothesis. The lateral mixing processes maybe obscuring the observed near surface enrichment and the effect of preferential flow currently not fully accounted for could further hinder the full interpretation of these findings. It still holds true, that:

- the quantitative loss due to surface evaporation on areas with a high leaf area index is more or less insignificant (accounting for 38 mm a^{-1} out of $1,896 \text{ mm a}^{-1}$; $\approx 2\%$; Figure 5),
- the isotopic enrichment due to evaporation for vegetated areas is considerably lower than for non-vegetated areas, as previously shown by Dubbert et al. (2013), and
- high rainfall intensity constrains any near surface isotopic enrichment related to evaporation (Hsieh et al., 1998).

However, our results indicate that the contribution of potential canopy evaporation (accounting for 344 mm a^{-1} out of $1,896 \text{ mm a}^{-1}$; $\approx 18\%$; Figure 5) to enrich the canopy storage and thereby potential throughfall (discriminating ^{18}O and ^2H resulting in more positive isotope signatures) still could partially explain the observed bias.

Nevertheless we presume that fog drip, created by sieving bypassing clouds or radiation fog frequently occurring in the study area Bendix et al. (2008), explains the majority of the

observed bias. Depending on the climatic processes generating the fog drip is typically isotopically enriched compared to rainfall, due to different condensation temperatures (Scholl et al., 2009). To get an impression for the magnitude of the possible bias due to throughfall and fog drip compared to direct rainfall, we compare the observed bias with a study presented by Liu et al. (2007) conducted in a tropical seasonal rain forest in China. They observed an average enrichment of +5.5 ‰ $\delta^2\text{H}$ for throughfall and +45.3 ‰ $\delta^2\text{H}$ for fog drip compared to rainfall. Even though the observed enrichment of fog drip and throughfall by Liu et al. (2007) may not be as pronounced within our study area (Goller et al., 2005), the general tendency could explain the modeled bias. According to Bendix et al. (2008) fog and cloud water deposition within our study area contributes 121 mm a⁻¹ to 210 mm a⁻¹ at the respective elevation. Assessing the actual amount fog drip for grass species like *Setaria sphacelata* under natural conditions is challenging and has so far not been accounted for.

In case that further discrimination below the surface would substantially alter the isotope signature, the bias would change continuously with depth. Any subsurface flow reaching wick samplers at lower elevations would then further increase the bias. However, the negative bias of -16.19 (±2.80 SD) ‰ $\delta^2\text{H}$ in all monitored top wick samplers during validation accounts for most of the observed bias in the two deeper wick samplers amounting to -17.32 (±2.47 SD) ‰ $\delta^2\text{H}$. Thus we conclude that the bias is mainly a result of constraints related to modeling surface processes, rather than subsurface ones.

Figure 4 shows the behavior of the chosen parameter sets for saturated hydraulic conductivity and groundwater depth during calibration and validation. The parameter space allows us to assess the range of suitable parameters and their sensitivity over a given parameter range. During calibration the given parameter space could not be constrained to more precise values for all parameters, which in this case should show a lower SD (Tab. 6) and narrower box plots (Figure 4). Especially the K_{sat} values of the soil layers A1, A3 and B1-B3, the porosity for all

soil layers (not included in Figure 4) and the groundwater depth depict a low sensitive over the entire calibration range (indicated by a high SD, wide box plot, and evenly scattered points; Tab. 6 and Figure 4). In particular the low sensitivity of the model towards groundwater depth seems surprising, but can be explained by the potentially low saturated hydraulic conductivities of the lower soil layers C1 and C2 limiting the percolation into the lower soil layers outside of the modeling domain. Even an extreme hydraulic potential, induced by a deep groundwater body, can be limited by a low hydraulic conductivity. None the less it noteworthy, that no model run without an active groundwater body as a lower boundary condition (groundwater depth < 2 m) results in a model performance with NSE > 0 (Figure 4). With a groundwater depth above 2 m the boundary condition would serve as a source of water with an undefined isotopic signal and prevent any percolation of water into deeper soil layers outside of the modeling domain. The results are therefore in alignment with the topography of the system indicating an active groundwater body deeper than 2 m and support our second hypothesis which we will further discuss in section 3.2. We identified several parameter combinations showing the same model performance, known as equifinality according to Beven and Freer (2001). The observed equifinality can partially be explained by counteracting effects of a decreasing K_{sat} and an increasing pore space, or that the water flow is restrained due to lower hydraulic conductivities at adjoining soil layers. Especially for deeper soil layers the interaction between surrounding layers makes it especially difficult to further constrain the given parameter range. Even though the parameter ranges for all behavioral model realizations are not so well confined, the small confidence intervals indicate a certain degree of robustness towards the predicted flows (Figure 3). Additional soil moisture measurements complementing the current setup in the future will allow us to put further confidence in this new approach and the drawn conclusions and allow us to directly compare different calibration targets (i.e. soil moisture vs. soil water isotopic signature).

Initial K_{sat} values based on literature values (see Tab. 1) deviate to a large extend from those derived through the calibration process. This is attributable to the occurrence of preferential flow within the macro pores (Bronstert and Plate, 1997) and the sampling method (PCaps) used to extract the soil water ~~mostly~~ stored in the soil with a matrix potential up to 30 hPa in the macropores (Landon et al., 1999). It becomes apparent that the mixing processes (based on dispersion and molecular diffusion) are not sufficient to equilibrate the isotope signature over the entire pore space (Landon et al., 1999; Šimůnek et al., 2003) and that the flow through the pore space is not homogenous. Thus the isotopic signature between the sampled pore media and the total modeled pore space differs (Brooks et al., 2010; Hrachowitz et al., 2013; McDonnell and Beven, 2014; McGlynn et al., 2002). The model tries to account for these effects by favoring high K_{sat} values during calibration (McDonnell and Beven, 2014; McGlynn et al., 2002).

Modeling soil water movement under such conditions should therefore be used with caution for models based on Darcy-Richards equation which assume instantaneously homogeneous mixed solutions and uniform flow. In line with the argumentation started by Beven and Germann (1982) and refreshed in their recent paper Beven and Germann (2013) we therefore stress the importance to account for preferential flow processes and overcome the limitation of Darcy-Richards equation limiting the explanatory power of hydrological models predicting water flow and solute/isotope transport in particular. Like Gerke (2006) and Šimůnek and van Genuchten (2008) among others we therefore seek to implement a dual permeability approach accounting for different flow patterns within the soil pore space (Gerke, 2006; Jarvis, 2007; Šimůnek and van Genuchten, 2008; Vogel et al., 2000, 2006, 2010). In the style of existing 1-D models for soil water isotope transport presented by Braud et al. (2005) and Haverd and Cuntz (2010) the inter-soil mixing processes by dispersion and molecular diffusion between different soil pore space compartments shall be accounted for in the future. Based on the presented findings this can now be extended towards the development and application of soil

water isotope models under natural conditions. To conclude, the results highlight the general suitability of high resolution soil water isotope profiles to improve our understanding of subsurface water flux separation implemented in current hillslope model applications and to predict subsurface soil water movement.

3.2 Modeled water fluxes

Acknowledging the general suitability of the model to delineate the prevailing flow patterns, we will now compare those to the current hydrological process understanding presented in the introduction. Figure 5 depicts the water balance of the modeled hillslope based on all behavioral model realizations, separating the amount of incoming precipitation into the main flow components: surface runoff and subsurface flow directly entering the stream, percolation to groundwater and evapotranspiration.

Evapotranspiration is further subdivided into transpiration and evaporation from the soil surface and the canopy, whereby evaporation from the canopy is designated as interception losses. Due to the small confidence intervals of the behavioral model runs (see Figure 3) the standard deviations of the model's flow components are relatively small (see Figure 5; standard deviation and mean value was computed without weighting the likelihood value).

The observed order of magnitude for evapotranspiration is in good agreement with previous values of 945 and 876 mm a⁻¹ reported for tropical grasslands by Windhorst et al. (2013a) and Oke (1987), respectively. As previously mentioned the evaporation of 382 mm a⁻¹ is dominated by interception losses accounting for 344 mm a⁻¹. Overall, these results support hypothesis II, which stated that a large share of the incoming precipitation is routed through the deeper soil layer and/or the groundwater body (here 49.7% or 942 mm a⁻¹) before it enters the stream. This also explains the long mean transit time of water of around 1.0 to 3.9 years (Crespo et al., 2012; Timbe et al., 2014) in comparison to the fast runoff reaction time. Well in agreement with our current process understanding and hypothesis III, we can further show

that the occurrence of surface runoff (33 mm a^{-1}) due to Hortonian overland flow is less important. For the graphical representation the surface runoff has therefore been combined with subsurface flow (2 mm a^{-1}) to “surface runoff & subsurface flow”, accounting in total for 35 mm a^{-1} (see Figure 5). A more heterogeneous picture can be depicted if we take a closer look at the flow processes along the studied hillslope and its soil profiles (Figure 6).

Vertical fluxes still dominate the flow of water (Figure 6b), but the near surface lateral flow components predicted by Bückner et al. (2010) become more evident (Figure 6a). Explained by the high saturated hydraulic conductivities in the top soil layers (Tab. 6 and Figure 4) up to $7.3 \cdot 10^3 \text{ m}^3 \text{ a}^{-1}$ are transported lateral between cells in the top soil layer, referring to 15.6% of the total flow leaving the system per year. According to the model results deep lateral flow is minimal accounting only for <0.1% of the total flow. It only occurs on top of the deeper soil horizons with low K_{sat} values. For all behavioral model realizations the groundwater level was >2 m thereby limiting the direct contribution of subsurface flow (2 mm a^{-1}) to the tributary, which had a hydraulic potential of only 1.5 m. Over the entire hillslope the importance of overland flow remains below 3% ($\approx 50 \text{ mm a}^{-1}$), of which a part is re-infiltrating, summing up to total overland flow losses of around 2% at the hillslope scale (35 mm a^{-1} , Figure 5). These results demonstrate the importance of near surface lateral flow and hence support hypothesis IV.

4 Conclusion

These data and findings support and complement the existing process understanding mainly gained by Goller et al. (2005), Fleischbein et al. (2006) Boy et al. (2008), Bückner et al. (2010), Crespo et al. (2012) and Timbe et al. (2014) to a large extend. Moreover, it was possible to quantify for the first time the relevance of near surface lateral flow generation. The observed dominance of vertical percolation into the groundwater body and thereby the importance of preferential flow seems to be quite common for humid tropical montane

regions and has recently been reported by Muñoz-Villers & McDonnell (2012) in a similar environment.

Being aware of the rapid rainfall-runoff response of streams within the catchment of the Rio San Francisco it has been questioned whether and how the system can store water for several years and still release it within minutes. Throughout the last decades several studies have observed similar hydrological behavior especially for steep humid montane regions (e.g. McDonnell (1990) and Muñoz-Villers & McDonnell (2012)) and concepts have been developed to explain this behavior: e.g. piston flow (McDonnell, 1990), kinematic waves (Lighthill and Whitham, 1955), transmissivity feedback (Kendall et al., 1999). Due to the limited depth of observations (max. depth 0.4 m) and the low overall influence of the lateral flows a more exact evaluation of the fate of the percolated water is still not possible. However, we are confident, that in combination with a suitable concept to account for the rapid mobilization of the percolated water into a tributary and experimental findings, further confining possible model realizations an improved version of the current approach, could further close the gap in our current process understanding.

Over decades hydrological models which are based on the Richards or Darcy equation (like the one we used), have been tuned to predict quantitative flow processes and mostly been validated using soil moisture data suitable to account for overall storage changes. Our results imply that doing this considerably well does not necessarily mean that the models actually transport the *right* water at the *right* time. Using tracer data to validate models as we did entails that those models now not only have to transport the correct amount but additionally the *right* water. Consequently, the relevance of the correct representation of uneven preferential flow through pipes or macropores, which is misleadingly compensated by high conductivities over the entire pore space within models based on the Richards or Darcy equation, becomes immense. Distinguishing between water flowing in different compartments

582 (e.g. pipes, cracks and macro pores) of the soil is a key task to get a closer and more precise
583 representation of the natural flow processes. Even though the chosen modeling structure
584 currently lacks a sufficient robustness to be widely applicable it highlights the potential and
585 future research directions for soil water isotope modeling.

Acknowledgments

The current study was conducted within the DFG Research Group FOR 816 “Biodiversity and sustainable management of a megadiverse mountain rain forest in south Ecuador” and the follow-up project PAK 825/3. The authors are very grateful for the funding supplied by the German Research Foundation DFG (BR2238/4-2 and BR 2238/14-1) and thank Thorsten Peters of the University of Erlangen for providing meteorological data.

References

- Barthold, F.K., Tyralla, C., Schneider, K., Vaché, K.B., Frede, H.-G., Breuer, L., 2011. How many tracers do we need for end member mixing analysis (EMMA)? A sensitivity analysis. *Water Resour. Res.* 47, W08519. doi:10.1029/2011WR010604
- Beck, E., Makeschin, F., Haubrich, F., Richter, M., Bendix, J., Valerezo, C., 2008. The Ecosystem (Reserva Biológica San Francisco), in: Beck, E., Bendix, J., Kottke, I., Makeschin, F., Mosandl, R. (Eds.), *Gradients in a Tropical Mountain Ecosystem of Ecuador*, Ecological Studies. Springer Berlin Heidelberg, pp. 1–13.
- Bendix, J., Rollenbeck, R., Richter, M., Fabian, P., Emck, P., 2008. Climate, in: Beck, E., Bendix, J., Kottke, I., Makeschin, F., Mosandl, R. (Eds.), *Gradients in a Tropical Mountain Ecosystem of Ecuador*, Ecological Studies. Springer Berlin Heidelberg, pp. 63–73.
- Bendix, J., Silva, B., Roos, K., Göttlicher, D.O., Rollenbeck, R., Nauß, T., Beck, E., 2010. Model parameterization to simulate and compare the PAR absorption potential of two competing plant species. *Int. J. Biometeorol.* 54, 283–295. doi:10.1007/s00484-009-0279-3
- Beven, K., Germann, P., 1982. Macropores and water flow in soils. *Water Resour. Res.* 18, 1311–1325. doi:10.1029/WR018i005p01311
- Beven, K., Germann, P., 2013. Macropores and water flow in soils revisited. *Water Resour. Res.* 49, 3071–3092. doi:10.1002/wrcr.20156
- Bogner, C., Bauer, F., Trancón y Widemann, B., Viñan, P., Balcazar, L., Huwe, B., 2014. Quantifying the morphology of flow patterns in landslide-affected and unaffected soils. *J. Hydrol.* 511, 460–473. doi:10.1016/j.jhydrol.2014.01.063
- Boy, J., Valarezo, C., Wilcke, W., 2008. Water flow paths in soil control element exports in an Andean tropical montane forest. *Eur. J. Soil Sci.* 59, 1209–1227. doi:10.1111/j.1365-2389.2008.01063.x
- Braud, I., Bariac, T., Gaudet, J.P., Vauclin, M., 2005. SiSPAT-Isotope, a coupled heat, water and stable isotope (HDO and H218O) transport model for bare soil. Part I. Model description and first verifications. *J. Hydrol.* 309, 277–300. doi:10.1016/j.jhydrol.2004.12.013
- Bronstert, A., 1999. Capabilities and limitations of detailed hillslope hydrological modelling. *Hydrol. Process.* 13, 21–48. doi:10.1002/(SICI)1099-1085(199901)13:1<21::AID-HYP702>3.0.CO;2-4

- Bronstert, A., Plate, E.J., 1997. Modelling of runoff generation and soil moisture dynamics for hillslopes and micro-catchments. *J. Hydrol.* 198, 177–195. doi:10.1016/S0022-1694(96)03306-9
- Brooks, J.R., Barnard, H.R., Coulombe, R., McDonnell, J.J., 2010. Ecohydrologic separation of water between trees and streams in a Mediterranean climate. *Nat. Geosci.* 3, 100–104. doi:10.1038/ngeo722
- Bücker, A., Crespo, P., Frede, H.-G., Breuer, L., 2011. Solute behaviour and export rates in neotropical montane catchments under different land-uses. *J. Trop. Ecol.* 27, 305–317. doi:10.1017/S0266467410000787
- Bücker, A., Crespo, P., Frede, H.-G., Vaché, K., Cisneros, F., Breuer, L., 2010. Identifying Controls on Water Chemistry of Tropical Cloud Forest Catchments: Combining Descriptive Approaches and Multivariate Analysis. *Aquat. Geochem.* 16, 127–149. doi:10.1007/s10498-009-9073-4
- Colman, R.L., Wilson, G.P.M., 1960. The Effect of Floods on Pasture Plants. *Agric. Gaz. NSW* 71, 337–347.
- Craig, H., 1961. Standard for Reporting Concentrations of Deuterium and Oxygen-18 in Natural Waters. *Science* 133, 1833–1834. doi:10.1126/science.133.3467.1833
- Craig, H., Gordon, L.I., 1965. Deuterium and oxygen 18 variations in the ocean and the marine atmosphere, in: Tongiogi, E. (Ed.), *Proceedings of the Conference on the Stable Isotopes in Oceanographic Studies and Paleotemperatures*. Lishi e F., Pisa, Spoleto, Italy, pp. 9–130.
- Crespo, P., Bücker, A., Feyen, J., Vaché, K.B., Frede, H.-G., Breuer, L., 2012. Preliminary evaluation of the runoff processes in a remote montane cloud forest basin using Mixing Model Analysis and Mean Transit Time. *Hydrol. Process.* 26, 3896–3910. doi:10.1002/hyp.8382
- Davies, J., Beven, K., Rodhe, A., Nyberg, L., Bishop, K., 2013. Integrated modeling of flow and residence times at the catchment scale with multiple interacting pathways. *Water Resour. Res.* 49, 4738–4750. doi:10.1002/wrcr.20377
- Dohnal, M., Vogel, T., Šanda, M., Jelínková, V., 2012. Uncertainty Analysis of a Dual-Continuum Model Used to Simulate Subsurface Hillslope Runoff Involving Oxygen-18 as Natural Tracer. *J. Hydrol. Hydromech.* 60, 194–205. doi:10.2478/v10098-012-0017-0
- Dubbert, M., Cuntz, M., Piayda, A., Maguás, C., Werner, C., 2013. Partitioning evapotranspiration – Testing the Craig and Gordon model with field measurements of oxygen isotope ratios of evaporative fluxes. *J. Hydrol.* 496, 142–153. doi:10.1016/j.jhydrol.2013.05.033
- Federer, C.A., Vörösmarty, C., Fekete, B., 2003. Sensitivity of Annual Evaporation to Soil and Root Properties in Two Models of Contrasting Complexity. *J. Hydrometeorol.* 4, 1276–1290. doi:10.1175/1525-7541(2003)004<1276:SOAETS>2.0.CO;2
- Fleischbein, K., Wilcke, W., Valarezo, C., Zech, W., Knoblich, K., 2006. Water budgets of three small catchments under montane forest in Ecuador: experimental and modelling approach. *Hydrol. Process.* 20, 2491–2507. doi:10.1002/hyp.6212
- Frisbee, M.D., Phillips, F.M., Campbell, A.R., Hendrickx, J.M.H., 2010. Modified passive capillary samplers for collecting samples of snowmelt infiltration for stable isotope analysis in remote, seasonally inaccessible watersheds 1: laboratory evaluation. *Hydrol. Process.* 24, 825–833. doi:10.1002/hyp.7523
- Garvelmann, J., Külls, C., Weiler, M., 2012. A porewater-based stable isotope approach for the investigation of subsurface hydrological processes. *Hydrol Earth Syst Sci* 16, 631–640. doi:10.5194/hess-16-631-2012

676 Genereux, D.P., Hooper, R.P., 1999. Oxygen and hydrogen isotopes in rainfall-runoff studies,
 677 in: Kendall, C., McDonnell, J.J. (Eds.), *Isotope Tracers in Catchment Hydrology*.
 678 Elsevier, pp. 319–346.

679 Gerke, H.H., 2006. Preferential flow descriptions for structured soils. *J. Plant Nutr. Soil Sci.*
 680 169, 382–400. doi:10.1002/jpln.200521955

681 Germann, P., Helbling, A., Vadilonga, T., 2007. Rivulet Approach to Rates of Preferential
 682 Infiltration. *Vadose Zone J.* 6, 207. doi:10.2136/vzj2006.0115

683 Goller, R., Wilcke, W., Leng, M.J., Tobschall, H.J., Wagner, K., Valarezo, C., Zech, W.,
 684 2005. Tracing water paths through small catchments under a tropical montane rain
 685 forest in south Ecuador by an oxygen isotope approach. *J. Hydrol.* 308, 67–80.
 686 doi:10.1016/j.jhydrol.2004.10.022

687 Hacker, J.B., Jones, R.J., 1969. The *Setaria sphacelata* complex - a review. *Trop. Grassl.* 3,
 688 13–34.

689 Haverd, V., Cuntz, M., 2010. Soil–Litter–Iso: A one-dimensional model for coupled transport
 690 of heat, water and stable isotopes in soil with a litter layer and root extraction. *J.*
 691 *Hydrol.* 388, 438–455. doi:10.1016/j.jhydrol.2010.05.029

692 Hrachowitz, M., Savenije, H., Bogaard, T.A., Tetzlaff, D., Soulsby, C., 2013. What can flux
 693 tracking teach us about water age distribution patterns and their temporal dynamics?
 694 *Hydrol Earth Syst Sci* 17, 533–564. doi:10.5194/hess-17-533-2013

695 Hsieh, J.C., Chadwick, O.A., Kelly, E.F., Savin, S.M., 1998. Oxygen isotopic composition of
 696 soil water: Quantifying evaporation and transpiration. *Geoderma* 82, 269–293.
 697 doi:10.1016/S0016-7061(97)00105-5

698 Hunter, J.D., 2007. Matplotlib: A 2D Graphics Environment. *Comput. Sci. Eng.* 9, 90–95.
 699 doi:10.1109/MCSE.2007.55

700 Huwe, B., Zimmermann, B., Zeilinger, J., Quizhpe, M., Elsenbeer, H., 2008. Gradients and
 701 Patterns of Soil Physical Parameters at Local, Field and Catchment Scales, in: Beck,
 702 E., Bendix, J., Kottke, I., Makeschin, F., Mosandl, R. (Eds.), *Gradients in a Tropical*
 703 *Mountain Ecosystem of Ecuador, Ecological Studies*. Springer Berlin Heidelberg, pp.
 704 375–386.

705 Jarvis, N.J., 2007. A review of non-equilibrium water flow and solute transport in soil
 706 macropores: principles, controlling factors and consequences for water quality. *Eur. J.*
 707 *Soil Sci.* 58, 523–546. doi:10.1111/j.1365-2389.2007.00915.x

708 Kendall, K.A., Shanley, J.B., McDonnell, J.J., 1999. A hydrometric and geochemical
 709 approach to test the transmissivity feedback hypothesis during snowmelt. *J. Hydrol.*
 710 219, 188–205. doi:10.1016/S0022-1694(99)00059-1

711 Kirkby, M., 1988. Hillslope runoff processes and models. *J. Hydrol.* 100, 315–339.
 712 doi:10.1016/0022-1694(88)90190-4

713 Körner, C., Scheel, J., Bauer, H., 1979. Maximum leaf diffusive conductance in vascular
 714 plants. *Photosynthetica* 13, 45–82.

715 Kraft, P., Multsch, S., Vaché, K.B., Frede, H.-G., Breuer, L., 2010. Using Python as a
 716 coupling platform for integrated catchment models. *Adv. Geosci.* 27, 51–56.
 717 doi:10.5194/adgeo-27-51-2010

718 Kraft, P., Vaché, K.B., Frede, H.-G., Breuer, L., 2011. CMF: A Hydrological Programming
 719 Language Extension For Integrated Catchment Models. *Environ. Model. Softw.* 26,
 720 828–830. doi:10.1016/j.envsoft.2010.12.009

721 Landon, M.K., Delin, G.N., Komor, S.C., Regan, C.P., 1999. Comparison of the stable-
 722 isotopic composition of soil water collected from suction lysimeters, wick samplers,
 723 and cores in a sandy unsaturated zone. *J. Hydrol.* 224, 45–54. doi:10.1016/S0022-
 724 1694(99)00120-1

725 Leibundgut, C., Maloszewski, P., Külls, C., 2011. *Tracers in Hydrology*. John Wiley & Sons,
 726 Chichester, UK.

- Lighthill, M.J., Whitham, G.B., 1955. On Kinematic Waves. II. A Theory of Traffic Flow on Long Crowded Roads. *Proc. R. Soc. Lond. Ser. Math. Phys. Sci.* 229, 317–345. doi:10.1098/rspa.1955.0089
- Liu, W.J., Liu, W.Y., Li, P.J., Gao, L., Shen, Y.X., Wang, P.Y., Zhang, Y.P., Li, H.M., 2007. Using stable isotopes to determine sources of fog drip in a tropical seasonal rain forest of Xishuangbanna, SW China. *Agric. For. Meteorol.* 143, 80–91. doi:10.1016/j.agrformet.2006.11.009
- McDonnell, J.J., 1990. A Rationale for Old Water Discharge Through Macropores in a Steep, Humid Catchment. *Water Resour. Res.* 26, 2821–2832. doi:10.1029/WR026i011p02821
- McDonnell, J.J., Beven, K., 2014. Debates—The future of hydrological sciences: A (common) path forward? A call to action aimed at understanding velocities, celerities and residence time distributions of the headwater hydrograph. *Water Resour. Res.* 50, 5342–5350. doi:10.1002/2013WR015141
- McDonnell, J.J., Sivapalan, M., Vaché, K., Dunn, S., Grant, G., Haggerty, R., Hinz, C., Hooper, R., Kirchner, J., Roderick, M.L., Selker, J., Weiler, M., 2007. Moving beyond heterogeneity and process complexity: A new vision for watershed hydrology. *Water Resour. Res.* 43, W07301. doi:10.1029/2006WR005467
- McGlynn, B.L., McDonnell, J.J., Brammer, D.D., 2002. A review of the evolving perceptual model of hillslope flowpaths at the Maimai catchments, New Zealand. *J. Hydrol.* 257, 1–26. doi:10.1016/S0022-1694(01)00559-5
- McKay, M.D., Beckman, R.J., Conover, W.J., 1979. A Comparison of Three Methods for Selecting Values of Input Variables in the Analysis of Output from a Computer Code. *Technometrics* 21, 239–245. doi:10.2307/1268522
- McMillan, H., Tetzlaff, D., Clark, M., Soulsby, C., 2012. Do time-variable tracers aid the evaluation of hydrological model structure? A multimodel approach. *Water Resour. Res.* 48, W05501. doi:10.1029/2011WR011688
- Mertens, J., Diels, J., Feyen, J., Vanderborght, J., 2007. Numerical analysis of Passive Capillary Wick Samplers prior to field installation. *Soil Sci. Soc. Am. J.* 71, 35–42. doi:10.2136/sssaj2006.0106
- Muñoz-Villers, L.E., McDonnell, J.J., 2012. Runoff generation in a steep, tropical montane cloud forest catchment on permeable volcanic substrate. *Water Resour. Res.* 48, W09528. doi:10.1029/2011WR011316
- Oke, T.R., 1987. *Boundary Layer Climates*, 2nd ed. Methuen, London, UK.
- Qu, Y., Duffy, C.J., 2007. A semidiscrete finite volume formulation for multiprocess watershed simulation. *Water Resour. Res.* 43, W08419. doi:10.1029/2006WR005752
- Rhoades, C.C., Eckert, G.E., Coleman, D.C., 2000. Soil carbon differences among forest, agriculture, and secondary vegetation in lower montane Ecuador. *Ecol. Appl.* 10, 497–505. doi:10.1890/1051-0761(2000)010[0497:SCDAFA]2.0.CO;2
- Scholl, M.A., Shanley, J.B., Zegarra, J.P., Coplen, T.B., 2009. The stable isotope amount effect: New insights from NEXRAD echo tops, Luquillo Mountains, Puerto Rico. *Water Resour. Res.* 45, W12407. doi:10.1029/2008WR007515
- Shuttleworth, W.J., Gurney, R.J., 1990. The theoretical relationship between foliage temperature and canopy resistance in sparse crops. *Q. J. R. Meteorol. Soc.* 116, 497–519. doi:10.1002/qj.49711649213
- Shuttleworth, W.J., Wallace, J.S., 1985. Evaporation from sparse crops—an energy combination theory. *Q. J. R. Meteorol. Soc.* 111, 839–855. doi:10.1002/qj.49711146910
- Šimůnek, J., Jarvis, N.J., van Genuchten, M.T., Gärdenäs, A., 2003. Review and comparison of models for describing non-equilibrium and preferential flow and transport in the vadose zone. *J. Hydrol.* 272, 14–35. doi:10.1016/S0022-1694(02)00252-4

- Šimůnek, J., van Genuchten, M.T., 2008. Modeling Nonequilibrium Flow and Transport Processes Using HYDRUS. *Vadose Zone J.* 7, 782–797. doi:10.2136/vzj2007.0074
- Sklash, M.G., Farvolden, R.N., Fritz, P., 1976. A conceptual model of watershed response to rainfall, developed through the use of oxygen-18 as a natural tracer. *Can. J. Earth Sci.* 13, 271–283. doi:10.1139/e76-029
- Soulsby, C., Rodgers, P., Smart, R., Dawson, J., Dunn, S., 2003. A tracer-based assessment of hydrological pathways at different spatial scales in a mesoscale Scottish catchment. *Hydrol. Process.* 17, 759–777. doi:10.1002/hyp.1163
- Stumpp, C., Maloszewski, P., 2010. Quantification of preferential flow and flow heterogeneities in an unsaturated soil planted with different crops using the environmental isotope $\delta^{18}\text{O}$. *J. Hydrol.* 394, 407–415. doi:10.1016/j.jhydrol.2010.09.014
- Tetzlaff, D., McDonnell, J.J., Uhlenbrook, S., McGuire, K.J., Bogaart, P.W., Naef, F., Baird, A.J., Dunn, S.M., Soulsby, C., 2008. Conceptualizing catchment processes: simply too complex? *Hydrol. Process.* 22, 1727–1730. doi:10.1002/hyp.7069
- Thom, A.S., 1972. Momentum, mass and heat exchange of vegetation. *Q. J. R. Meteorol. Soc.* 98, 124–134. doi:10.1002/qj.49709841510
- Timbe, E., Windhorst, D., Crespo, P., Frede, H.-G., Feyen, J., Breuer, L., 2014. Understanding uncertainties when inferring mean transit times of water trough tracer-based lumped-parameter models in Andean tropical montane cloud forest catchments. *Hydrol. Earth Syst. Sci.* 18, 1503–1523. doi:10.5194/hess-18-1503-2014
- Uhlenbrook, S., Roser, S., Tilch, N., 2004. Hydrological process representation at the meso-scale: the potential of a distributed, conceptual catchment model. *J. Hydrol.* 291, 278–296. doi:10.1016/j.jhydrol.2003.12.038
- Vogel, H.-J., Cousin, I., Ippisch, O., Bastian, P., 2006. The dominant role of structure for solute transport in soil: experimental evidence and modelling of structure and transport in a field experiment. *Hydrol Earth Syst Sci* 10, 495–506. doi:10.5194/hess-10-495-2006
- Vogel, T., Gerke, H.H., Zhang, R., Van Genuchten, M.T., 2000. Modeling flow and transport in a two-dimensional dual-permeability system with spatially variable hydraulic properties. *J. Hydrol.* 238, 78–89. doi:10.1016/S0022-1694(00)00327-9
- Vogel, T., Sanda, M., Dusek, J., Dohnal, M., Votrubova, J., 2010. Using Oxygen-18 to Study the Role of Preferential Flow in the Formation of Hillslope Runoff. *Vadose Zone J.* 9, 252–259. doi:10.2136/vzj2009.0066
- Weiler, M., McDonnell, J., 2004. Virtual experiments: a new approach for improving process conceptualization in hillslope hydrology. *J. Hydrol.* 285, 3–18. doi:10.1016/S0022-1694(03)00271-3
- Wheeler, M.D., Newman, S.M., Orr-Ewing, A.J., Ashfold, M.N.R., 1998. Cavity ring-down spectroscopy. *J. Chem. Soc. Faraday Trans.* 94, 337–351. doi:10.1039/A707686J
- Windhorst, D., Brenner, S., Peters, T., Meyer, H., Thies, B., Bendix, J., Frede, H.-G., Breuer, L., 2013a. Impacts of Local Land-Use Change on Climate and Hydrology, in: Bendix, J., Beck, E., Bräuning, A., Makeschin, F., Mosandl, R., Scheu, S., Wilcke, W. (Eds.), *Ecosystem Services, Biodiversity and Environmental Change in a Tropical Mountain Ecosystem of South Ecuador, Ecological Studies Vol. 221*. Springer, Berlin, Heidelberg, New York, pp. 275–286.
- Windhorst, D., Waltz, T., Timbe, E., Frede, H.-G., Breuer, L., 2013b. Impact of elevation and weather patterns on the isotopic composition of precipitation in a tropical montane rainforest. *Hydrol. Earth Syst. Sci.* 17, 409–419. doi:10.5194/hess-17-409-2013
- Zimmermann, B., Elsenbeer, H., 2008. Spatial and temporal variability of soil saturated hydraulic conductivity in gradients of disturbance. *J. Hydrol.* 361, 78–95. doi:10.1016/j.jhydrol.2008.07.027

829 Zimmermann, U., Ehhalt, D., Muennich, K.O., 1968. Soil-Water Movement and
830 Evapotranspiration: Changes in the Isotopic Composition of the Water., in: Isotopes in
831 Hydrology. International Atomic Energy Agency, Vienna, pp. 567–585.
832
833

834 **Tables**

835 **Tab. 1 Soil physical parameters**

Soil code	Clay	Texture	Silt	Porosity	K _{sat} *	Van Genuchten-Mualem Parameters	
	[%]	Sand [%]	[%]	[%]	[m/d]	α	n
A1 & A1 top	34	17	49	81	0.324	0.641	1.16
A2 & A2 top	19	33	49	63	0.324	0.352	1.13
A3 & A3 top	15	34	51	74	0.324	0.221	1.24
B1	8	16	76	66	0.228	1.046	1.19
B2	15	34	51	59	0.228	0.145	1.13
B3	11	18	70	58	0.228	0.152	1.16
C1	15	45	40	55	0.026	0.023	1.12
C2	45	20	35	47	0.026	0.004	1.17

*K_{sat} values are based on values taken within the proximity of the hillslope under similar land use by Crespo et al. (2012) and Zimmermann and Elsenbeer (2008).

836

837 **Tab. 2 Plant (*Setaria sphacelata*) and soil dependent parameters used for the Shuttleworth-Wallace equation**

Parameter	Symbol	Value	Unit	Used to calculate	Source
Potential soil surface resistance	r _{ss pot}	500	s m ⁻¹	r _{ss}	Federer et al.(2003)
Max. stomatal conductivity or max. leaf conductance	g _{max}	270	s m ⁻¹	r _{sc}	Körner et al. (1979)
Leaf area index	LAI	3.7	m ² m ⁻²	r _{sc}	Bendix et al. (2010)
Canopy height	h	0.2	m	r _{aa} , r _{ac} & r _{as}	Estimate based on hand measurements
Representative leaf width	w	0.015	m	r _{ac}	
Extinction coefficient for photosynthetically active radiation in the canopy	CR	70	%	r _{sc}	Federer et al.(2003)
Canopy storage capacity	-	0.15	mm LAI ⁻¹	Interception	Federer et al.(2003)
Canopy closure	-	90	%	Throughfall	Estimate based on image evaluation
Albedo	alb	11,7	%	Net radiation	Bendix et al. (2010)

838

839

840 Tab. 3 Modeling periods

Description	Period		Duration [days]
	Start	End	
Initial states	1 July 2010	30 June 2012	730
Warm up period	1 July 2010	31 October 2010	122
Calibration period	1 November 2010	31 October 2011	364
Validation period	1 November 2011	31 October 2012	365

841

842 Tab. 4 Soil parameter ranges for the Monte Carlo simulations (assuming uniform distribution for each parameter).

Soil code	K _{sat} [m d ⁻¹]		Porosity [m ³ m ⁻³]	
	Min.	Max.	Min.	Max.
A1-3 top	0.001	35	0.3	0.9
A1-3	0.001	30	0.3	0.9
B1-3	0.001	12	0.1	0.8
C1-2	0.001	8	0.1	0.8

843

844 Tab. 5 Model performance during calibration and validation for all behavioral model runs (based on all calibration
845 runs with NSE> 0.15, bias< ± 20.0 ‰ δ²H and R² > 0.65). Best modeled fit based on NSE.

	Calibration 2010-2011		Validation 2011-2012		Best modeled fit
	Mean	SD	Mean	SD	
NSE	0.19	0.008	0.35	0.029	0.42
R ²	0.67	0.008	0.66	0.020	0.84
Bias	-15.90	0.113	-16.93	0.344	-16.16

846

847 **Tab. 6** Parameter ranges used for validation (all calibration runs with NSE>0.15, bias< ± 20.0 ‰ $\delta^2\text{H}$ and $R^2 > 0.65$)
848 and parameter set for the best modeled fit based on NSE.

	Mean	SD	Best modeled fit
K_{sat} [m d^{-1}]			
A1 top	21.8	5.8	20.4
A2 top	11.0	2.3	12.6
A3 top	25.6	6.3	29.6
A1	11.7	6.6	13.5
A2	7.4	2.8	8.9
A3	15.7	6.4	15.3
B1	4.0	2.4	4.0
B2	5.2	3.2	10.5
B3	4.6	2.2	2.5
C1	1.3	1.2	0.6
C2	1.7	1.4	0.1
Porosity [$\text{m}^3 \text{m}^{-3}$]			
A1 top	0.54	0.08	0.44
A2 top	0.56	0.09	0.44
A3 top	0.66	0.09	0.53
A1	0.55	0.08	0.42
A2	0.55	0.09	0.46
A3	0.65	0.09	0.74
B1	0.34	0.09	0.31
B2	0.64	0.09	0.54
B3	0.75	0.09	0.70
C1	0.54	0.09	0.41
C2	0.55	0.09	0.67
Groundwater depth [m]			
	50.5	28.6	76.5

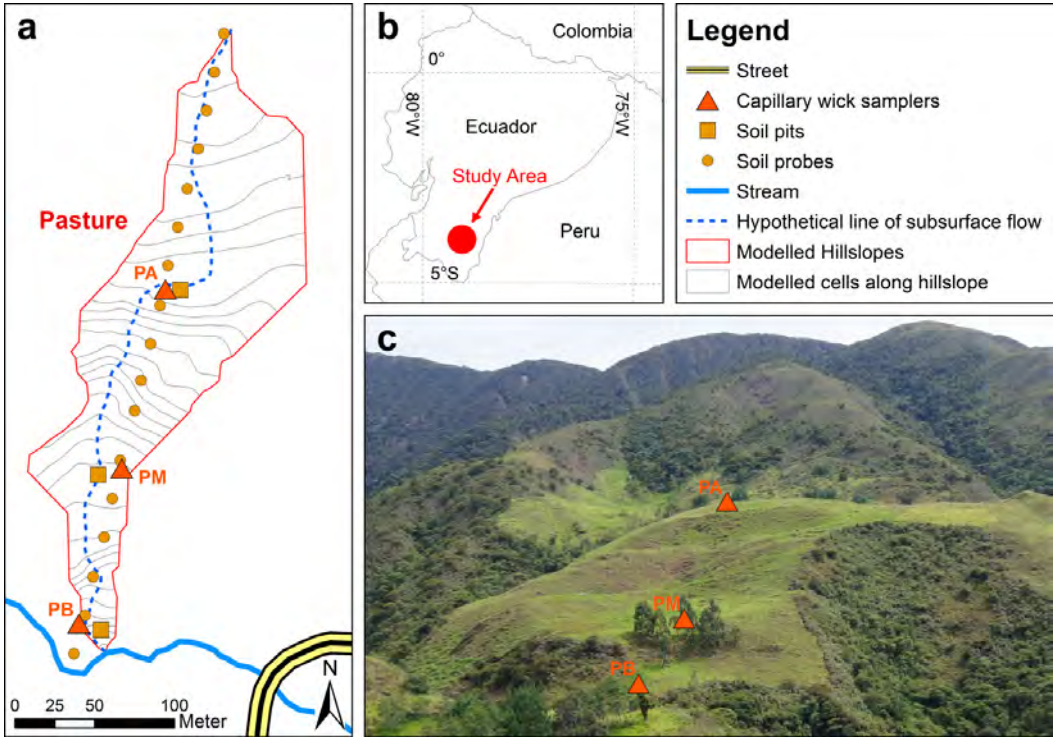


Figure 1 a) Outline of the modeled hillslope and its virtual discretization into cells. b) Location of the study area within Ecuador c) Photograph showing the Location of the wick samplers (P = Pasture and B = bajo/lower level, M = medio/middle level, A = alto/top level sampler).

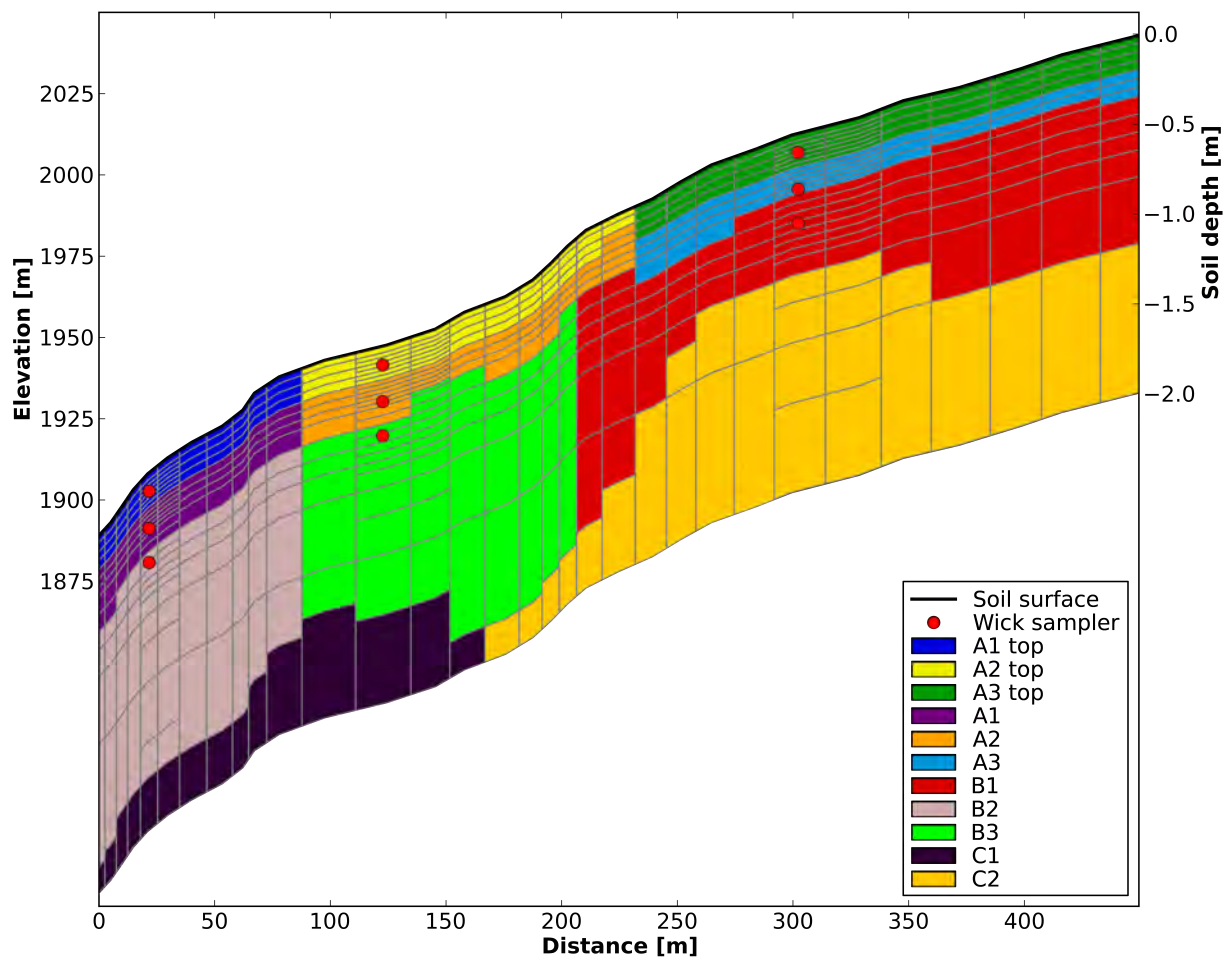


Figure 2 Elevation profile (top black line, left ordinate), succession of soil layer types (color plate) and soil depths assigned to the modeling grid (right ordinate).

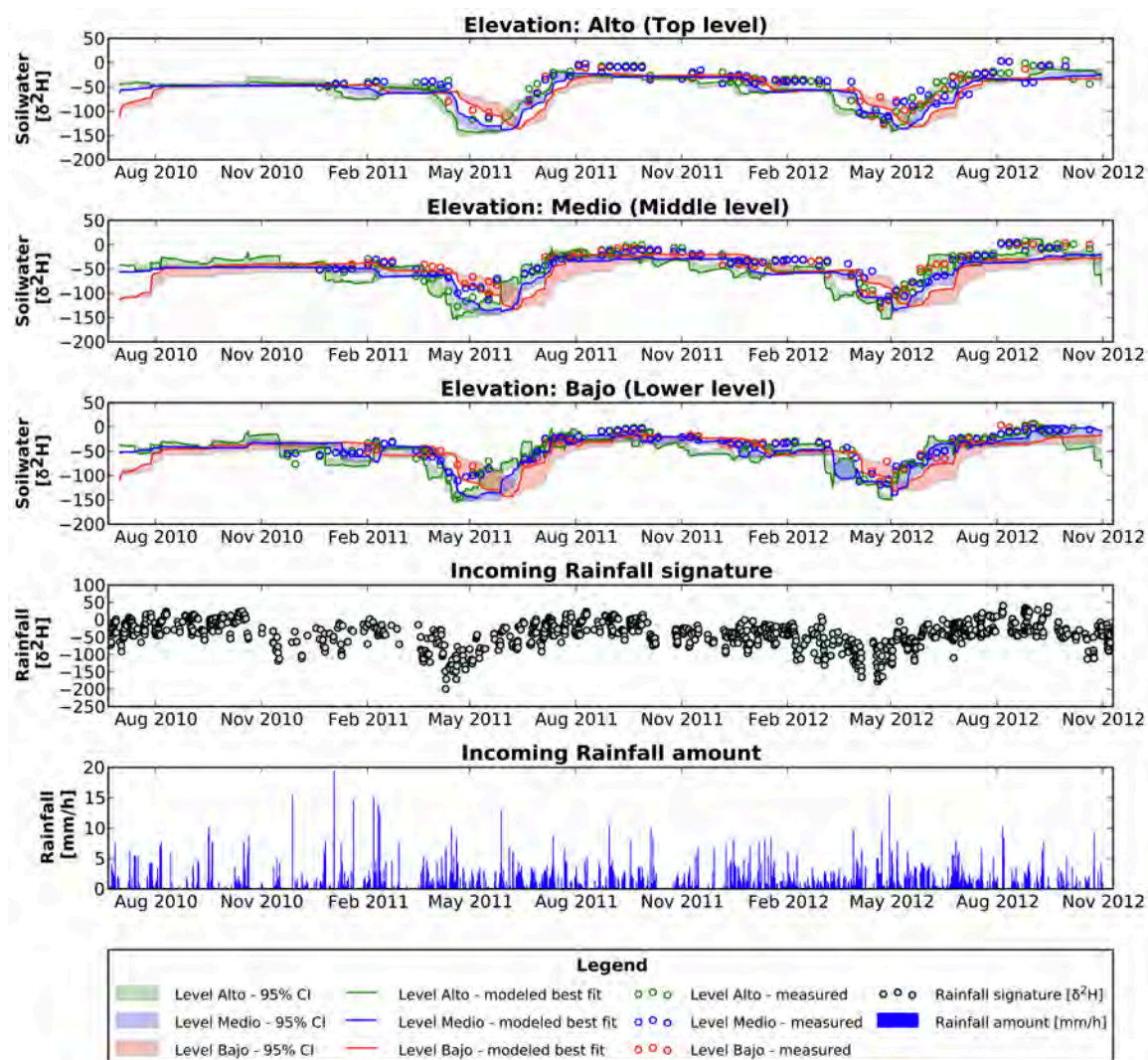


Figure 3 Time series of soil water isotope signatures (Top panels 1-3 for each elevation) for all behavioral model runs with: $NSE > 0.15$, $bias < \pm 20.0 \text{ ‰ } \delta^2H$ and $R^2 > 0.65$ showing the 95% confidence interval (CI; transparent areas) and best modeled fit (solid line) vs. measured values (circles) at all 3 elevations (2,010, 1,949 and 1,904 m a.s.l.) and soil depths below ground (0.10, 0.25 and 0.40 m). Bottom panels 4 and 5, isotopic signature and rainfall amount, respectively.

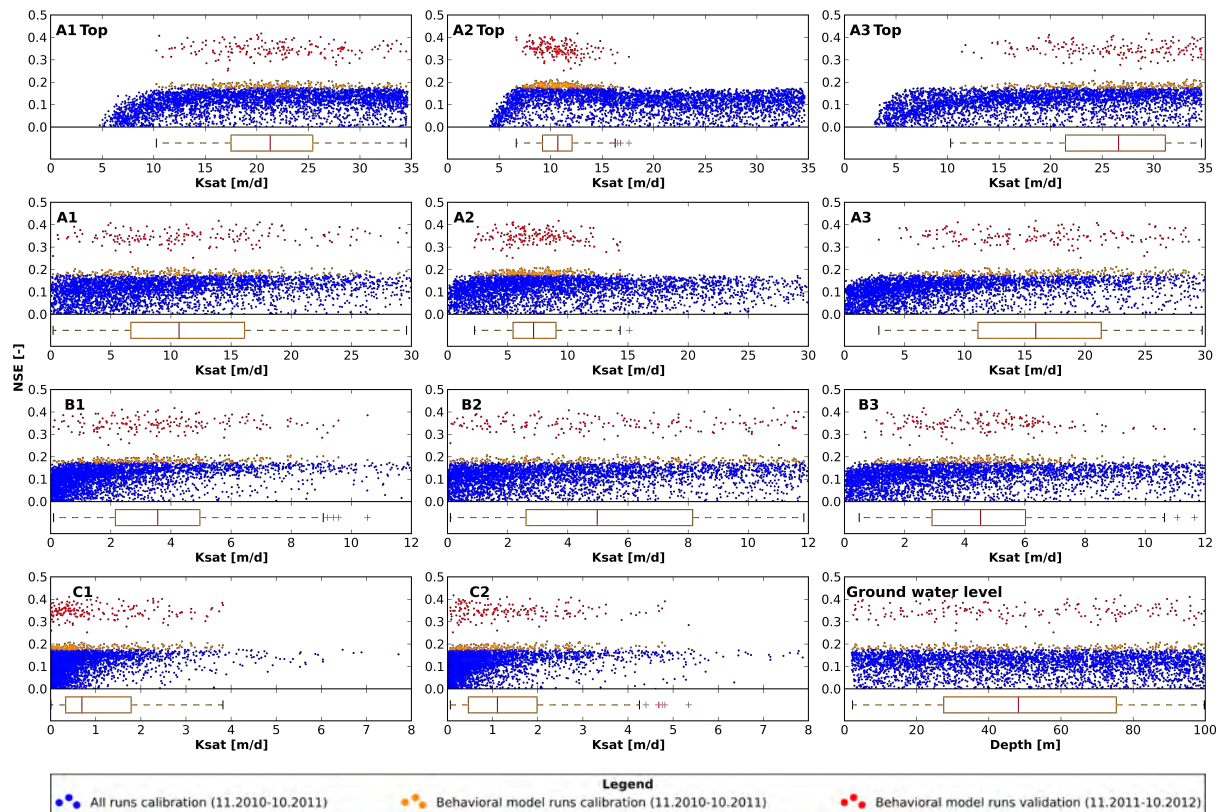


Figure 4 Dotty plots of NSE values (>0.0) during calibration (blue) and for behavioral model runs ($\text{NSE} > 0.15$, bias $< \pm 20.0\%$ $\delta^2\text{H}$ and $R^2 > 0.65$) during calibration (orange) and validation (red) for saturated hydraulic conductivity (K_{sat}) for all soil types and groundwater depth. Box plots show the unweighted parameter distribution of all behavioral model runs ($\text{NSE} > 0.15$, bias $< \pm 20.0\%$ $\delta^2\text{H}$ and $R^2 > 0.65$) used for validation. Results for soil porosity look similar to those of the groundwater and are therefore not shown.

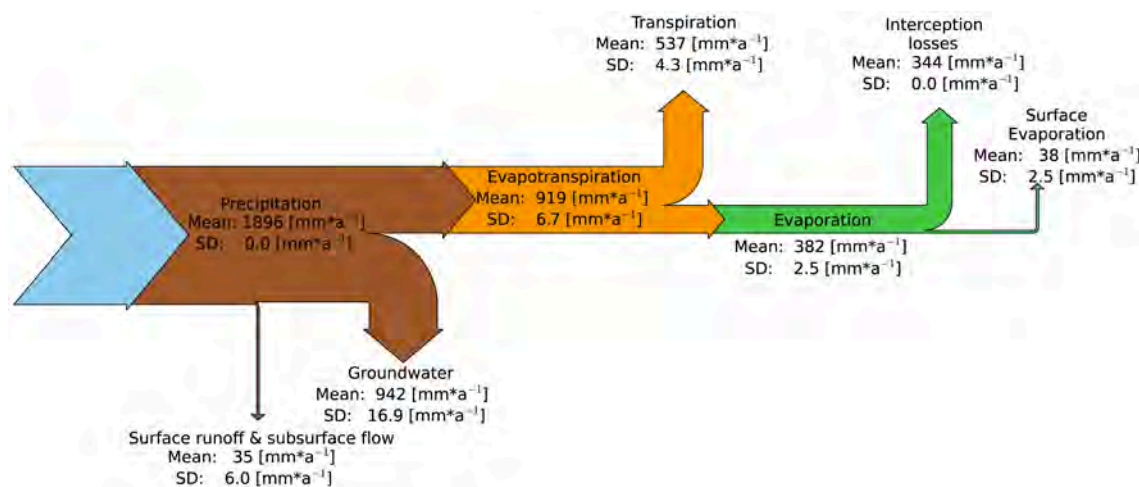


Figure 5 Mean annual flows and standard deviation (SD) of the main flow components at a hillslope scale of all behavioral model runs from 2010-2012.

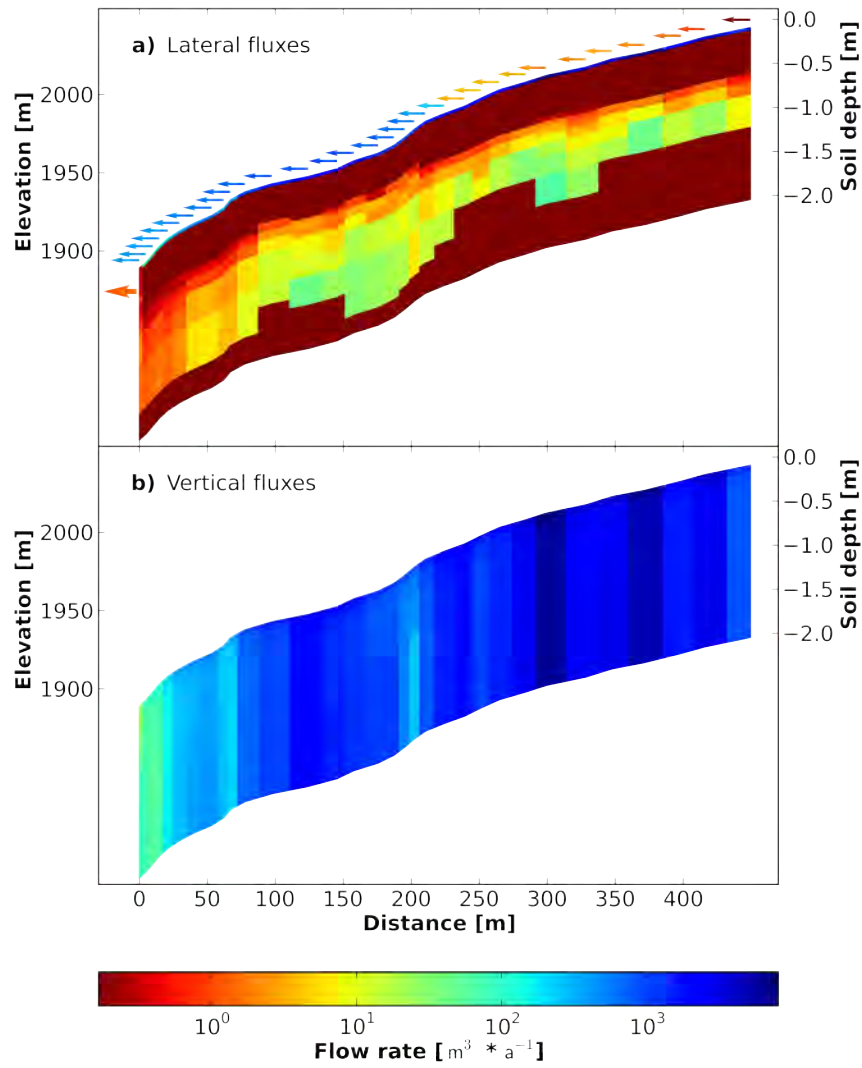


Figure 6 a) Lateral and b) vertical fluxes for the best modeled fit. Arrows indicate the amount of surface runoff and direct contribution to the outlet through subsurface flow. The maximum flow between storage compartments is $7.3 \cdot 10^3 \text{ m}^3 \text{ a}^{-1}$ and the total observed flow leaving as well as entering the system accumulates to $37 \cdot 10^3 \text{ m}^3 \text{ a}^{-1}$.