

**Socio-hydrologic Modeling to Understand and Mediate the Competition for Water
between Agriculture Development and Environmental Health:
Murrumbidgee River Basin, Australia**

T. H. M. van Emmerik ^{1*}, Zheng Li ², M. Sivapalan ^{2,3}, S. Pande ¹,
J. Kandasamy ⁴, H. H. G. Savenije ¹, A. Chanan ⁵ and S. Vigneswaran ⁴

¹ Department of Water Management, Faculty of Civil Engineering and Geosciences,
Delft University of Technology, Delft, The Netherlands

² Department of Civil and Environmental Engineering, University of Illinois at Urbana-
Champaign, Hydrosystems Laboratory, Urbana, USA.

³ Department of Geography and Geographic Information Science, University of Illinois at
Urbana-Champaign, Computer Applications Building, Urbana, USA.

⁴ School of Civil and Environmental Engineering, University of Technology Sydney,
Broadway, Sydney, NSW, Australia

⁵ State Water Corporation of New South Wales, Sydney, Australia

*Corresponding author: Tim van Emmerik, T.H.M.vanEmmerik@tudelft.nl

Manuscript submitted to *Hydrology and Earth System Sciences*
Special issue: *Predictions under Change: Water, Earth and Biota in the Anthropocene*

Revised, September 17, 2014

Abstract

Competition for water between humans and ecosystems is set to become a flash point in the coming decades in many parts of the world. An entirely new and comprehensive quantitative framework is needed to establish a holistic understanding of that competition, thereby enabling the development of effective mediation strategies. This paper presents a modeling study centered on the Murrumbidgee River Basin (MRB). The MRB has witnessed a unique system dynamics over the last 100 years as a result of interactions between patterns of water management and climate driven hydrological variability. Data analysis has revealed a pendulum swing between agricultural development and restoration of environmental health and ecosystem services over different stages of basin scale water resource development. A parsimonious, stylized, quasi-distributed coupled socio-hydrologic system model that simulates the two-way coupling between human and hydrological systems of the MRB is used to mimic and explain dominant features of the pendulum swing. The model consists of coupled nonlinear ordinary differential equations that describe the interaction between five state variables that govern the co-evolution: reservoir storage, irrigated area, human population, ecosystem health, and environmental awareness. The model simulations track the propagation of the external climatic and socio-economic drivers through this coupled, complex system to the emergence of the pendulum swing. The model results point to a competition between human ‘productive’ and environmental ‘restorative’ forces that underpin the pendulum swing. Both the forces are endogenous, i.e., generated by the system dynamics in response to external drivers and mediated by humans through technology change and environmental awareness, respectively. Sensitivity analysis carried out with the model further reveals that socio-hydrologic modeling can be used as a tool to explain or gain insight into observed co-evolutionary dynamics of diverse human-water coupled systems. This paper therefore contributes to the ultimate development of a generic modeling framework that can be applied to human-water coupled systems in different climatic and socio-economic settings.

Keywords: socio-hydrology, modeling, co-evolution, pendulum swing, irrigation, ecosystem health, competition for water, Murray-Darling Basin, Australia.

1. Introduction

The world is facing severe water management challenges, in the context of population growth, degradation of poorly distributed resources and the considerable uncertainties posed by the effects of climate change (Falkenmark and Lannerstad, 2005; Wagener *et al.*, 2010). The rapid rates of change that the water cycle and the environment are likely to experience as a result of increasing human impacts (e.g., anthropogenic climate change, land use and land cover changes) requires prediction and management frameworks that capture the coupling between, and feedbacks across, engineered, natural, and social systems (Sivapalan, 2011; Savenije *et al.*, 2014). In many parts of the world such as Australia, climate change and the need to provide water, food and other amenities for a growing population have posed major challenges for water management (UNEP, 2007). Increased water extraction for agriculture in many parts of Australia has resulted in mounting pressure on, and degradation of, riparian environments. Planned cutbacks in water allocation for irrigation to alleviate environmental degradation have resulted in a sharper focus on the economic livelihood of rural Australia. This is clearly evidenced by the heated debate over water use in the Murray-Darling Basin in eastern Australia where competition for water resources between humans and ecosystems has come to the fore in recent times (ABC, 2010; Roderick, 2011). Not surprisingly then, there is a critical need for new theoretical and quantitative frameworks (Ostrom, 2009; Gleick and Palaniappan, 2010; Grafton *et al.*, 2013) to understand and mediate the competition for water between humans and the environment through generating new understanding of how they coexist and interact.

Of the many interacting processes in the earth system, human processes are now the dominant drivers of change in water, nutrient, and energy cycles, and in landscape evolution (Vitousek *et al.*, 1997; Crutzen and Stoemer, 2000; Röckstrom *et al.*, 2009; Vörösmarty *et al.*, 2010; Zalasiewicz *et al.*, 2010). Rapid population growth and increased appropriation of freshwater supplies means that hydrologic and human systems are now intrinsically coupled. Human settlement patterns, economic production and demographics are related to the availability of freshwater services as growing human

populations alter natural water systems to suit social needs. Human management of the water cycle results in enormous complexity in coupled human-hydrological systems, spanning both physical infrastructure and the economic, policy and legal frameworks governing water availability, use and pricing. Explicitly confronting hydrological predictions in the context of human behavior poses challenges towards quantification of hydrological systems in terms that are meaningful within economic or policy frameworks.

With the continued expansion of the human footprint, not only are landscape properties changing, but there is also potential for new forms of hydrological behavior to arise due to exceedance of known or previously unknown thresholds (Zehe and Sivapalan, 2009; Kumar, 2011). Hydrological predictions must therefore be based on explicit accounting of both changes in landscape structure as well as the possibility for new dynamics that might emerge from such human-environment interactions (Kallis, 2007; Kallis, 2010). Patterns of human modification in the landscape are themselves phenomena to be studied and interpreted, so we can more deeply understand the consequences of human intervention in the past, and better plan engineered responses to future challenges. Wagener *et al.* (2010) have called for a new paradigm for hydrologic science that includes human-induced changes as integral to the overall hydrologic system. To address these challenges Sivapalan *et al.* (2012) and Sivapalan *et al.* (2014) have proposed the sub-field of socio-hydrology with “a focus on the understanding, interpretation and prediction of the flows and stocks in the human-modified water cycle at multiple scales, with explicit inclusion of the two-way feedbacks between human and water systems”.

Murrumbidgee (Australia) Case Study

This paper presents a socio-hydrologic modeling study centered on the Murrumbidgee River Basin (MRB) (Figure 1), a sub-basin of the much larger Murray-Darling Basin. The Murray-Darling Basin has recently witnessed heated debate over water use as a result of heavy competition for water resources between humans and ecosystems (Roderick, 2011). Data analysis carried out by Kandasamy *et al.* (2014) using data from

the Murrumbidgee River Basin has revealed a “pendulum swing” between an exclusive focus in the initial stages on water extraction for food production, and later efforts to mitigate and reverse the consequent degradation of the riparian environment. The basin witnessed a rapid rise in population in the early decades, amid increasing concerns of salinity and declining ecosystem services. It was able to sustain the growth in population and agricultural production by first increasing reservoir storage capacities and then through investments in infrastructure and technologies that helped to control soil salinity and algal blooms, such as efficient irrigation systems, barrages and upgraded sewage treatment plants. Yet, in the end, it was unable to curb the eventual decline in population and in agricultural production that began around 1990.

The decline in water available for the environment and its ultimate degradation as a consequence led to the rise of the notion of the “environmental consumer” in the basin (Kandasamy *et al.*, 2014). This implied a change in preferences of the population within the basin and of the society at large towards a better environment. The system reached the stage whereby inhabitants of the MRB, and especially in the wider society, were no longer solely driven by the income that agriculture generated if it came at the cost of environmental degradation. They reached the point where they were willing to give up water consumption to achieve improved environment quality and to satisfy environmental demands. Such a change in the values and norms of individuals within the basin and in the wider society resulted in a different dynamics between agricultural production and environment quality (Chen and Li, 2011; Sivapalan *et al.*, 2014). The changing values and norms, via changes in the dynamics of human consumption and environment quality, fed back to changes in the delivery of ecosystem services. Overall, the rise and the fall of population and crop production led to a spatio-temporal pendulum swing that is best illustrated by the area planted with rice within the basin (see Figure 4c in Kandasamy *et al.*, 2014; see also Sivapalan *et al.*, 2012).

With this paper we aim to demonstrate that socio-hydrologic modeling can be used as a useful tool to study and explain observed co-evolutionary dynamics of coupled human-water systems. This paper thus represents an attempt to explore through numerical

simulation the main drivers of the “pendulum swing” observed in the Murrumbidgee. We present a stylized, quasi-distributed and coupled socio-hydrologic system model that explicitly includes the two-way coupling between humans and nature (e.g., the hydrologic system), including evolution of human values/norms relating to water and the environment. We use it to mimic broad features of the observed pendulum swing described by Kandasamy *et al.* (2014), and in so doing generate insights into the dominant drivers (both exogenous and endogenous) of the trajectory of co-evolution of the coupled human-water system, and in this way to develop a broad theoretical framework that may potentially be transferable to other systems in different climatic and socio-economic settings. This modeling work also contributes to efforts aimed at developing generic model frameworks for coupled socio-hydrologic systems that involve a competition for water between humans and the environment (Elshafei *et al.*, 2014).

2. Model Description

Kelly *et al.*, (2013) described a wide class of approaches to modeling coupled human and environmental systems and suggested a framework for choosing an approach that is suitable for the problem at hand. In the area of socio-hydrology, there have been several recent efforts at developing simple conceptual (or stylized) models of coupled human-water systems. For example, Di Baldassarre *et al.* (2013a,b) developed a simple, dynamic human-flood model to represent the interactions and feedbacks between hydrological and social processes in context of urban flooding. Liu *et al.* (2014) likewise proposed a coupled human-water system model to mimic the competition for water between humans and the environment in the Tarim River Basin in Western China. Srinivasan (2013) presented a coupled human-water system model in the context of urban water supplies in the city of Chennai, India. These models belong to a class of system dynamics models with a rich history of modeling the coupled dynamics of human populations, economic growth and general resource availability at a variety of spatio-temporal scales (Forrester, 1971; Cuypers and Rademaker, 1974; Hoekstra, 1997; Vörösmarty *et al.*, 2000; Turner, 2008; Davies and Simonovic, 2011). Alternatively, although with some subtle differences, there have been efforts at developing coupled conceptual water and

economic system models (also known as hydro-economic models) in the context of basin scale water allocation (Pande *et al.*, 2011), groundwater management (Pulido-Velazquez *et al.*, 2006), and agricultural water management (Knapp *et al.*, 2003; Maneta *et al.*, 2009). Another layer of complexity can be added to these approaches by invoking the principles that underpin how individuals organize themselves (Greif and Laitin, 2004; Pande and Ertsen, 2013), accounting for changing values and norms (Sivapalan *et al.*, 2014), or allowing for changing structure of coupled human water systems and how it affects the resulting dynamics (Kallis, 2007; Kallis, 2010). The degree of belief in the coupled dynamics simulated by these approaches is enhanced by also explicitly modeling the feedbacks between economic growth, population size and also technology change, where applicable (Eicher, 1996; Pande *et al.*, 2014). The model presented in this paper goes some ways towards combining the strengths of these previous attempts at socio-hydrological modeling.

Before we present the details of the model of the Murrumbidgee basin system, however, it is pertinent to present the motivation and scope of the modeling framework being presented. At this early stage simplified equations are used to model the main drivers in the catchment, i.e., hydrology, irrigation, ecology and population size. As discussed later, the governing equations have ‘intuitive’ basis in the relevant literature and their parameters are calibrated to mimic the data trends. It is acknowledged up front that the predicted timings and magnitudes will not exactly match actual occurrences in the past, yet the simulated trends or patterns are consistent with those observed. This paper aims to show that a socio-hydrologic modeling framework might be used to study complex coupled human-water systems. The main goal of the model development is therefore to demonstrate that despite complex interactions, the dominant patterns can be reproduced. Yet another objective of model development is to trigger further study of the complexities of human water interactions, especially the governing equations and associated constitutive relationships. This will expand the possibility of implementing socio-hydrological models, guide future decisions on catchment water management, and communicate to the practicing engineer/basin manager the potential and value of socio-hydrology.

2.1 Model Domain

The MRB is located in south-eastern Australia, has a drainage area of 85,000 km², and forms part of the iconic Murray-Darling Basin (Figure 1). The headwaters of the Murrumbidgee River are located in the Snowy Mountains in the east, from where the river flows west towards the outlet, which is at the confluence with the Murray River. Much of the agricultural activity happens downstream (i.e., west) of Wagga Wagga. For this reason, the study domain is restricted to the area of the MRB west of Wagga Wagga (as shown in Figure 2, with drainage area of 60,000 km²). The measured discharge at Wagga Wagga is therefore the main water inflow to the system, supplemented by rain that falls over the study domain. In order to mimic internal relocation of humans and associated agricultural activity, the model domain on the MRB is notionally divided into three equal sub-regions or settlements denoted here as upstream, middle stream and downstream (Figure 2). The aim here is merely to demonstrate the working of the model and not to correlate well with observed irrigation areas (see Figure 1). The geomorphic properties are assumed to be the same for the three settlements (i.e., they have same catchment area and the area available for irrigation).

2.2 Governing Equations

The model consists of five coupled nonlinear ordinary differential equations that describe the interaction between state variables that govern the co-evolution: reservoir storage (hydrology), irrigated area, size of the human population, a measure of ecosystem health and an indicator of changing environmental awareness within society.

The hydrology equation represents water storage, irrigation water use and river discharge variations from a water balance perspective. The irrigation equation simulates the dynamics of the irrigation area per capita subject to water availability, technology change and environmental degradation. The population equation tracks the dynamics of population size through internal growth, migration from outside, and internal (both

upstream and downstream) relocation. The ecology equation simulates water storage in notional riparian wetlands located downstream of the study region (i.e., downstream of the downstream section) that are episodically recharged by river flow during high flow events. The environmental awareness equation tracks the dynamics of community sensitivity to the degradation of ecosystem health, here exclusively focused on the health of riparian wetlands.

Explicit inter-connections are built in between these five principal equations through assumed constitutive relationships that allow for the relevant feedback mechanisms (both positive and negative) to operate. The first three equations (irrigation area, population size, reservoir storage) are developed for each sub-region separately (upstream, middle stream, downstream). Humans are allowed to internally relocate between these sub-regions (in both directions), water is exchanged only in the downstream direction and obviously no exchange of irrigation area is allowed. The last two equations (ecosystem health and environmental awareness) are applicable to the wetlands only, and are therefore system-wide equations. Details of each of the five model components and their interconnections are presented next. Note that in this study, the constitutive relationships that are used to link the governing equations are not prescribed; rather, both their functional forms and associated parameter values are obtained by calibration. The functional forms and parameters were adjusted based on expert knowledge, combined with calibration, and was governed by two contrasting modeling demands. The first is the need for realistic relationships between variables. The second is the aim to keep the formulation as simple as possible. Details about these are therefore only presented as part of the results section.

Irrigation Equation

In this study, irrigation activity is expressed in terms of irrigated area *per capita*. This helps to separate the effect of population size, the dynamics of which is treated separately (see later). The governing equation for irrigation is given by:

$$\frac{da_i}{dt} = \alpha_\tau(T) + \alpha_s(S_i) + \alpha_E(E) \quad 1)$$

where a_i is irrigated area per capita, and i refers to the sub-region. In Equation 1, the dynamics of a_i is governed by three growth rates, expressed by three constitutive relationships: $\alpha_\tau(T)$ (function of technology, T), $\alpha_s(S)$ (function of water storage, S), $\alpha_E(E)$ (function of community environmental awareness, E).

In this paper we consider technology, T , very broadly, and use it to embrace a whole gamut of advances, such as mechanization, advanced irrigation practices (e.g., drip irrigation), planting strategies to maximize water use, and plant breeding to increase crop yield (see for example Hayami and Ruttan (1970) for a discussion on the two broad types of agricultural technology: ‘mechanical’ and ‘biological and chemical’). All of these contribute to higher a_i , and are reflected in $\alpha_\tau(T)$. Secondly, a_i is also governed by the amount of water available for irrigation. Availability of water (e.g., storage in the reservoir), provides confidence to farmers deciding to settle, invest and expand. Equation 1 captures this dependence in terms of constitutive relationship between the growth rate, α_s , and reservoir storage (S) on the annual time scale. On the opposite side, increasing awareness of environmental degradation may motivate some farmers to voluntarily forego a part of their land during periods of drought for the sake of environmental protection. The growth rate, α_E (less than zero), expressed as a function of environmental awareness, E , is used to capture the negative feedback in response to environmental degradation. Clearly, the dynamics of a_i is geared to the dynamics of reservoir storage, S , and environmental awareness, E . These dynamics are explicitly captured through associated differential equations, which are described next. Technology, T , changes with time too and here it is assumed to increase with time varying wealth, the details of which are presented later.

Population Equation

The model simulations begin with an initially small population located in the downstream settlement only (denoted as 1, Figure 2), and zero populations in the middle stream and upstream settlements (denoted as 2 and 3, respectively). Subsequent change of population size can be due to three factors: natural growth (i.e., birth – death), migration (from outside), and internal relocation (up- or down-migration between settlements). For simplicity, the model assumes that migration to and from the outside is only to the downstream settlement. This assumption is based on results from Kandasamy *et al.* (2014), where this mechanism was observed in the early phase of settlement in the MRB. In addition, a model design with migration to and from the outside to the downstream, middle stream and upstream settlements did not yield better results and only increased model complexity. This means that the middle stream and upstream settlements populate or depopulate through internal relocation and subsequent internal growth. The governing equation for population dynamics for each of the settlements is given by:

$$\frac{dN_1}{dt} = N_1\{\psi_n + \psi_m(\varphi_1)\} + N_2\psi_{r_{21}} - N_1\psi_{r_{12}} \quad 2a)$$

$$\frac{dN_2}{dt} = N_2\psi_n + N_1\psi_{r_{12}} + N_3\psi_{r_{32}} - N_2\psi_{r_{23}} \quad 2b)$$

$$\frac{dN_3}{dt} = N_3\psi_n + N_2\psi_{r_{23}} - N_3\psi_{r_{32}} \quad 2c)$$

where ψ_n , ψ_m and ψ_r are the population growth rates: ψ_n is natural growth rate (assumed constant), ψ_m is growth rate through migration from outside, $\psi_{r_{ij}}$ is rate of growth or loss through internal relocation. In Equation 2a, $N_2\psi_{r_{21}}$ refers to growth through relocation from settlements 2 to 1, whereas the term $N_1\psi_{r_{12}}$ refers to loss through relocation from settlements 1 to 2.

The model assumes that people either move into an area or leave on the basis of a relative attractiveness level, defined as φ . In Equation 2 external migration rate, ψ_m , into settlement 1 is assumed to be nonlinear function of the level of attractiveness, φ_1 (see Table 3 for details for the associated (calibrated) constitutive relationship). The level of

attractiveness of any given region i is expressed in terms of the *per capita* irrigation potential:

$$\varphi_i = (a_i^{max} - a_i) \quad 3)$$

which is the difference between the potential (maximum possible) area available for irrigation and the actual (present) area under irrigation, on a *per capita* basis. Broadly we hypothesize that people migrate to the basin, and/or relocate within the basin, in order to maximize their (*per capita*) income potential (see e.g. Fedotov *et al.*, 2008 for a similar formulation). However, for simplicity and as a first step, we have assumed that irrigation potential (Equation 3) can serve as a surrogate for the income potential. In reality, however, income potential can also be impacted by water availability, the state of the environment, and several other factors. There is therefore considerable room for improvement of this formulation in the future, especially as more data become available and our understanding of human motivations improves. The idea that people migrate to maximize their economic profit is based on microeconomic fundamentals. The MRB is an agriculture dominated area, where throughout the 20th century population change and agricultural development occurred side by side (Kandasamy *et al.*, 2014). Therefore it is a reasonable assumption that the migration of people is determined by irrigation potential (economic gains) and environmental awareness (economic losses).

In Equation 2 relocation rate, ψ_{rij} , between two different settlements within the basin, i and j , is assumed to be, to first order, a function of the difference in the levels of attractiveness between the two. The difference in attractiveness, $(\varphi_j - \varphi_i)$, can be seen as a gradient that drives the relocation. In this paper, in addition, we make a further correction to reflect possible human desire to help mitigate the resulting environmental degradation. The relocation rate, ψ_{rij} , is then governed by a combination of the attractiveness gradient and environmental awareness, E . The resulting equation for ψ_{rij} is given by:

$$\psi_{rij} = r(\varphi_j - \varphi_i) + cE \quad 4)$$

where r and c are constants. Figure 3 conceptualizes the model formulation for the relocation of people: when $\psi_{rij} > 0$ the movement is from settlement i to j , when $\psi_{rij} < 0$ the movement is from j to i . Equation 3 thus creates a relocation dynamics between the three downstream, middle stream and upstream settlements that emerges endogenously with the growth of irrigated areas, population size and environmental awareness.

The inclusion of the environmental awareness in Equation 4 is to accommodate a curb on the expansion of irrigated area and return part of the irrigated area back to nature. Such actions limit local consumption of water, and allows for more water to recharge the wetlands downstream. In this model, the inclusion of environmental awareness has the net effect of shifting people downstream. When the sign of cE is positive, and $\varphi_j - \varphi_i$ is downstream-directed, environmental awareness accelerates downstream relocation; and when the sign of cE is negative, and $\varphi_j - \varphi_i$ is upstream-directed, upstream relocation decelerates.

Hydrology Equation

The hydrology equation, essentially a water balance equation, tracks the dynamics of water stored within any one settlement ($i=1, 2, 3$) on a daily time step. The net inputs to a settlement are inflows at its upstream end (i.e., measured inflows at Wagga Wagga for the upstream settlement, or model simulated inter-settlement flows in the case of the middle stream and downstream settlements) plus the runoff generated within the settlement from rainfall. Net outputs are outflows/overflows to the settlement located downstream, and the amount of water extracted for irrigation. At the beginning of simulations (circa 1910), there is no reservoir storage. The daily water balance equation for settlement i is given by:

$$\frac{dS_i}{dt} = Q_i^{in} + A_i^c \beta p_i - \max\{(\gamma_s(T) - (1 - \beta)p_i)N_i a_i, 0\} - Q_i^{out} \quad 5)$$

394

395 where S_i is net storage within the settlement, *including reservoir storage* (once it is
396 constructed), Q_i^{in} is inflow at the upstream end, and Q_i^{out} is outflow to the settlement at
397 the downstream end. The second term on the R.H.S (Right Hand Side) of Equation 5 is
398 the rate of runoff generated internal to the settlement, expressed as a product of the
399 “physical” catchment area A_i^c , average rainfall intensity p_i , and a runoff coefficient β ,
400 which is assumed to be constant here for simplicity. The third term is net water
401 extraction for irrigation, after accounting for rainfall. Here $N_i a_i$ is total irrigated area, and
402 $\gamma_S(T)$ is crop water demand per unit area, and their product is the net demand for water.
403 During rainfall events, since crops can directly access water from rainfall, water
404 extraction is the demand not met by the net amount of rainfall over the irrigated area.
405 When rainfall is more than enough to satisfy the irrigation demand, water extraction is set
406 to zero. Crop water demand per unit area, $\gamma_S(T)$, changes with time through technological
407 advances such as crop breeding. For this reason, $\gamma_S(T)$ is estimated as a function of
408 technology, T (see later for details).

409

410 Early in the simulations we assume that there are no reservoirs and temporary detention
411 storage in the river is the only storage in the system. Water is extracted directly from the
412 river, and during this early period excess water simply passes through to the downstream.
413 However, the model is conditioned such that on the basis of the trigger of a persistent
414 deficit in the water available over many years to meet irrigation demand, a reservoir is
415 introduced endogenously to mitigate that deficit. We define “water shortage days” (ω) as
416 the number of days in a year when the sum of storage in the reservoirs and river flow is
417 less than irrigation demand (e.g., during a period of drought). These days are monitored
418 over the years to quantify ‘water sufficiency’. The decision to construct a reservoir and
419 the timing of that construction are both linked to the number of “water shortage days”.
420 Reservoir construction is triggered when the mean “water shortage days”, ω , over five
421 years exceeds a specified drought threshold δ (days). Once the reservoir is constructed,
422 the threshold δ is doubled (but to a value not larger than 365 days), thereby modeling an
423 evolving tolerance for drought. The size of the reservoir Ω at each stage of construction
424 notionally follows user demand. We assume that Ω is linearly related to irrigation

demand, given by $\Omega = 10\gamma_S N_i a_i$. When river flow is not enough to satisfy the irrigation water demand, reservoir storage (if already built) releases water to meet the unmet demand. The amount of water released is the difference between water demand and river flow. In the MRB, agriculture dominates, and therefore we neglect household water use.

Ecology Equation

In this paper, ecology refers to the functioning of the chain of riparian wetlands, which are episodically recharged when river flow exceeds a prescribed threshold released from the downstream settlement ($i = 1$). The wetlands are assumed to exist notionally only and are located downstream of the downstream settlement (i.e., outside of the basin, for example they may refer notionally to the Lowbidgee Wetlands, which is the largest wetlands located within the MRB). The ecology governing equation is the water balance equation of these wetlands, which receive water episodically through overflows of the river, and then over a longer time lose the water through a combination of leakage and evaporation. Both leakage and evaporative losses are assumed to be proportional to the storage. This water balance equation is thus given by:

$$\frac{dW}{dt} = \max(0, Q_1^{out} - \mu) - kW \quad 6)$$

where W is the storage in the wetlands, Q_1^{out} is the river discharge reaching the wetlands (outflow from the downstream section), μ is the recharge/overflow threshold above which the wetland is recharged, and κ is a coefficient representing the combination of evaporation and leakage loss.

Environmental Awareness Equation

The wetland storage simulated by the ecology equation (Equation 6) is used as a predictor of ecosystem health. The state of ecosystem health is assumed to impact human behavior with respect to irrigation area expansion and water extraction in a way that mitigates any

environmental degradation and thus helps to maintain or improve ecosystem health. In the model such human feedbacks are channeled through a dynamic state variable called environmental awareness, E .

It is assumed that environmental degradation takes place whenever wetland storage, W , falls below a threshold, W_d . It is only when this happens that environmental degradation is recognized by the community, and the longer it persists, the longer the environmental awareness, E , accumulates. On the other hand, whenever W is higher than W_d for the entire year, then we allow the accumulated E to deplete. In other words, environmental awareness, E , is akin to a memory bank that accumulates during times when the environment degrades, and depletes during relatively healthier times.

Because of the episodic nature of these exceedances, we define n as the number of days in a year during which W is below the threshold. Clearly n is connected to the wetland storage dynamics (Equation 6), and therefore represents the coupling of environmental awareness to the ecology equation. When n is positive, then E accumulates, whereas when n is zero then E is allowed to deplete. The temporal dynamics of E is then given by the following differential equation:

$$\frac{dE}{dt} = \varepsilon(n) \quad 7)$$

where $\varepsilon(n)$ is the rate of accumulation/depletion of environmental awareness. The functional form of $\varepsilon(n)$ is calibrated so as to mimic the observed pendulum swing (the calibrated expression for $\varepsilon(n)$ is presented in Table 3). In reality its exact formulation will rely on ecological considerations, which is beyond the scope of this study. We also highlight our assumption in this paper that environmental awareness is solely driven by the ecological well-being, a variable that is local to the basin. Macro-scale variables, such as regional or national politics and economy and climate, may play a role in determining the dynamics of environmental awareness as indicated in the general framework proposed by Elshafei *et al.* (2014), but have been ignored here.

Model Coupling: Cross-System Feedbacks

The socio-hydrologic model presented above is a coupled model that involves 5 sub-systems represented by 5 ordinary differential equations and associated state variables. The sub-systems are internally coupled, represented through several constitutive relationships (see Table 3 for the expressions resulting from calibration). In the case of irrigation area, population size and reservoir storage, the model is implemented in a quasi-distributed way, dividing the study domain into 3 settlements. This brings about additional couplings, involving the one-way exchanges of water (in the downstream direction only), and the two-way exchanges of human populations. As already mentioned, the ecologic and environmental awareness sub-systems are lumped systems, representing a domain that is downstream of the study domain.

Figure 4 conceptualizes how the systems are coupled with each other, and the associated feedback loops. The hydrology equation simulates the capacity of reservoir storage that is available for irrigation. Increase of reservoir storage capacity contributes to an increase of irrigated area per capita, a_i , in a given region, as reflected in the relationship $\alpha_S(S)$ in Equation 1. The expansion of irrigated area has a self-magnifying effect: it increases wealth, which is assumed to lead to the creation of a demand for and the ability to adopt new or better technologies.

In this model, wealth is expressed in terms of the agricultural *per capita* Gross Basin Product (GBP), P_{GB} , for the whole basin (combined value for all settlements). It is defined as the product of crop price, f_p , crop yield per unit area, $\gamma_r(T)$, and the weighted average of the irrigated area *per capita*, a_i obtained from Equation 1:

$$P_{GB} = \frac{\gamma_r(T) f_p \sum_{i=1}^M (a_i N_i)}{\sum_{i=1}^M N_i} \quad 8)$$

Since we have divided the basin into 3 sections, $M = 3$. T is the technology variable. The crop price, f_p , is an external input to the model, and the time series of f_p is obtained over the past 100 years for rice (taken here as the notional crop) from the World Bank (World Bank, 2013). Given the estimate of GBP (which is dynamically changing), technology is then expressed as a function of GBP (see for e.g. Eicher, 1995; Pande *et al.*, 2013). We prescribe a relationship between the two as follows:

$$T = [\lambda_1 + \lambda_2 \exp(-\eta P_{GB})]^{-1} \quad 9)$$

Note that the parameter values in Equation 9 are chosen as, $\lambda_1 = 0.1, \lambda_2 = 0.9, \eta = 0.07$, so that T is bounded between 1 and 10. Relative to this basin and relative to this time period, $T = 1$ represents a low technological level (e.g., primitive society, at an initial phase of a human settlement), and $T = 10$ represents the highest possible technological development. We note here that GBP in the above relationship is assumed to be impacted by past technological developments.

Technology, T , is thus an endogenous variable that broadly reflects productivity increase due to mechanization, efficient water distribution, planting, improved crops etc. In the model, T is assumed to contribute to three factors that affect agricultural and economic productivity: crop water demand per unit area, $\gamma_s(T)$; crop yield $\gamma_r(T)$, which is the amount of crop produced per unit irrigated area; and irrigated area per capita, a_i . In the case of $\gamma_s(T)$, a high value of T contributes to water savings, and reduces $\gamma_s(T)$. In the case of $\gamma_r(T)$, a high value of T increases crop yields, $\gamma_r(T)$. Together, improved technology enables more water to be saved per unit area and more crop to be produced per unit area, i.e., by reducing $\gamma_s(T)$ and increasing $\gamma_r(T)$. In addition, technology in the form of mechanization reduces human labor requirement, allowing for more land to be cultivated and managed *per capita*: in this way, $\alpha_\tau(T)$ increases, which in turn increases productivity and wealth. Taken together all of these feedbacks constitute a common *positive feedback loop* in the coupled socio-hydrologic system.

Productivity of the combined land, water and human resources, through wealth generation and technological advances, contributes to their further exploitation. Over time such intensification of production contributes to a progressive degradation of the environment, which acts as a control or restraint on further growth. This *negative feedback* is represented in the model in several ways.

Firstly, expansion of irrigated area leads to a reduction of flows released to the wetlands, contributes to a reduction of storage in these wetlands, and in this way contributes to the damage of the ecology of wetlands. Persistent damage, as measured by the number of days of the year when W falls below the set threshold, sensitizes the population to environmental damage. Thus ecological damage resulting from irrigation area expansion feeds back to raise awareness in the local and wider community to slow or even reverse the degradation and ultimately protect the environment. This is represented in Equation 1 in the form of a term, $\alpha_E(E)$, which represents a rate of reduction of irrigation area *per capita* as a function of environmental awareness.

Secondly, for the basin as a whole, there is another facet to the exploitation of the land and water resources. This is through increased population. Migration from outside and relocation within has been assumed to be driven by “income potential”, represented here by “irrigation potential”. As people settle in the downstream section and exhaust the area available for irrigation, they migrate upstream, and open up new areas for irrigation, raise demand for water, which then leads to construction of reservoirs. Limited area available for irrigation constrains further growth. However, in addition, the upward expansion of irrigation area, and subsequently the exploitation of water resources through construction of more reservoirs upstream, reduces environmental flows downstream, sharply reducing the recharge of wetlands. The resulting increase of environmental awareness is factored in the model, helping to slow down the upward migration, and accelerating downward movement of all relevant variables. Figure 4 captures the essence of both *positive* and *negative* feedback loops that are captured in the model. Even if independently and empirically derived, the organization of the coupled system closely resembles the generic framework proposed by Elshafei *et al.* (2014).

Initial and Boundary Conditions

Figure 5 presents time series of measured discharge at Wagga Wagga and of world price for rice over the past 100 years. These, and the average rainfall time series over the study domain, are the only external drivers to the socio-hydrologic model. Upstream flow and rainfall are clearly not impacted by human activity occurring within the MRB. Food price is controlled by global food supply and demand dynamics and is outside the control of the MRB (i.e., it is exogenous to MRB). All other dynamics are internally, or endogenously, generated on the basis of the assumptions of the model and the assumed constitutive relations. In this paper, we have chosen rice to serve as the surrogate for a general food/crop price. Part of the reason is that rice was already introduced into the MRB at the beginning of the study period, and constitutes over 50% of the irrigation allocation (Gorman, 2013; Hafi *et al.*, 2005).

As initial conditions, it is assumed that the community begins to grow and expand from the downstream end only and neither humans nor any organized agricultural activities initially existed in the middle stream and upstream sections of the basin. Table 1 presents the initial conditions for all state variables assumed in the model. A simple explicit numerical scheme is used to solve the coupled set of differential equations. The model uses variable time steps: the hydrology and ecology equations are solved on a daily time step, whereas all other equations are solved with an annual time step. Table 2 presents the definition of the parameter values used in the model and prescribed magnitudes in the model. Note that the constitutive relations and their parameter values are calibrated and the results are presented in Table 3. Kandasamy *et al.* (2014) illustrated the pendulum swing in the Murrumbidgee in terms of variations of reservoir capacity, population size, irrigation area and environmental flows, which are reproduced here in Figure 6a-d to provide context. The aim of the model presented here is to capture broad features of these trends (in space and time) and to gain deeper insights that might be generalized to other places.

The model includes several constitutive relations that make it determinate. These include: $\alpha_\tau(T)$, $\alpha_s(S_l)$, $\alpha_E(E)$, $\psi_m(\varphi)$ and $\varepsilon(n)$. Additionally, to complete the specification of the problem we have to prescribe other relations such as those of $T(GBP)$, $\gamma_s(T)$ and $\gamma_r(T)$. It is premature to prescribe these constitutive relations a priori. For the purpose of this study these constitutive relations are “tuned” so that the model is able to mimic the observed, emergent dynamics, as shown in Figure 6a-d. The data in Figure 6a-d was taken from Kandasamy *et al.* (2014), based on (a) water storage development in the MRB (sourced from NSW State Water Corporation), (b) population in the MRB (ABS, 2013a), (c) irrigated area in the MRB (ABS, 2013b) and (d) irrigation flow utilization in the MRB (DWR, 1989; ABS 2013b).

Model sensitivity analysis

The socio-hydrological modeling framework, though parsimonious, has numerous parameters. While this allows flexibility in representing diverse socio-hydrological behaviors, i.e. that it can generate several socio-hydrological realities, it may also lead to equifinality in that it may generate similar socio-hydrological realities but with different parameter values (Savenije, 2001). A sensitivity analysis of the model with respect to its parameters is therefore important in order to reveal diverse realities that it can reveal, as well as determine how prone it is to equifinality. The benefits of this analysis are three-fold. First, we identify redundant, i.e. equifinal parameters. Second, it gives insight on how parameters, fluxes and stocks are connected. Third, it allows us to explore the alternate socio-hydrological realities that the presented modeling framework can generate. To accomplish this we used a variance-based method, similar in spirit to Sobol’ (1993, 2001). Over the last years, various authors have used variance-based sensitivity analysis to assess complex hydrologic or ecologic system models (e.g. Tang et al., 2007; Rosero et al, 2009; Bois et al, 2008; Song et al., 2012). The variance-based index that we use to assess parameter sensitivity of model outcomes, S_i , is computed as:

$$S_i = \frac{V_i}{V(Y)}$$

where V_i is the variance of model outcome statistic Y (for e.g. mean squared error in simulating the best fitting population time series) when the i^{th} parameter is varied and

$V(Y)$ is the sum of variances V_i over all the parameters. We here note that $V(Y)$ is the sum taken over parameters one at a time and not over all possible combinations of parameters.

All parameters are varied within a given range, which can be seen in Table 4. Every parameter is varied (uniformly sampled from the corresponding parameter range) one at the time, yielding corresponding modeled time series for outcome variables: population, irrigated area, storage, wetland storage and environmental awareness. These are compared with the best fitting model outcome to determine the root mean squared error (RMSE), yielding a RMSE per outcome variable for all samples of the parameter i . The variance of the RMSEs, V_i , corresponding to the samples of parameter i is then calculated. The variances of these RMSEs over the parameters sampled are then summed to obtain the following equation for the sensitivity of a model outcome to the i^{th} parameter,

$$S_i = \frac{V_i}{\sum_{i=1}^d V_i}$$

where i is the tested parameter, $d (= 15)$ is the total number of parameters ($i = 1, \dots, d$), V_i is the variance of RMSEs corresponding to parameter i , and S_i is the sensitivity index for the i^{th} parameter. The results of the model are used to explore sensitivity of model outcomes to parametric perturbations and the ability of the presented model to simulate diverse socio-hydrological realities.

3 Results and Discussion

The results of model implementation to the Murrumbidgee Basin are presented in four parts: (i) the resulting model-predicted temporal (and spatial) dynamics of the state variables and fluxes, (ii) outcomes of the constitutive relations obtained after matching the observed dynamics, (iii) presentation of the dynamics of other internal variables to help provide insights into the co-evolutionary dynamics and (iv) the sensitivity and robustness of the model.

3.1. Temporal and spatial dynamics of the state variables and fluxes

Figure 6e presents the time variations of reservoir capacity, population size, irrigation area, and water extraction for irrigation over the 100 year period to mirror the corresponding observed trends shown in Figure 6a-d. Figure 6e also shows the upstream migration of reservoir capacity. In both Figures 6e-h and 7, we divide the study period into the four major eras identified by Kandasamy *et al.* (2014). Figure 7 presents the calibrated constitutive relations. The functional forms of these constitutive relations are presented in Table 3. The results demonstrate that the model is able to mimic in a “general” way the temporal trends in the observed dynamics of water resources, area under irrigation, population size, including the “pendulum swing”.

However, by itself this is not claimed to be a unique result of the model, given that these are calibrated results. The complexity of the model and the many degrees of freedom available to it, can lead to simulation of patterns that are different from the observed pendulum swing. While high complexity is desirable to simulate a rich class of emergent patterns, such models when calibrated, especially for sparsely gauged basins (in terms either of socio-economic or hydrological data), may not reliably predict the dynamics driven by future yet unseen exogenous forcing. See for example Sivapalan *et al.*, (2003), Jakeman and Letcher (2003), Fenicia *et al.*, (2008), Pande *et al.* (2012), Pande (2013), Arkesteijn and Pande (2013) for extensive analyses of the relationships between model complexity, model structure deficiency, prediction uncertainty. Furthermore, the differences in the shapes of the curves between observations and predictions, especially in the case of irrigation area, points to model improvements that can still be made: for example, the assumption that attractiveness level is a function of irrigation potential may have to be improved with the hindsight of additional data. In this way these modelling efforts can also give guidance and focus to future data collection efforts and analyses.

3.2. Outcomes of the constituent relations

Regardless of how well the model is able to reproduce the observed dynamics, we are more interested in answering the following questions. How did the observed dynamics

691 unfold? What is a plausible explanation for the observed dynamics? What insights can be
692 gained through the implementation of the model? However we acknowledge that, given
693 the complexity of the model and the associated equifinality issues, what we can learn
694 from the calibrated model is just one possible explanation, one of several.

695
696 Figures 8 to 10 provide possible answers to these questions through recourse to the
697 simulated dynamics of several internal variables, which may provide insights into how
698 the observed hydrologic and human process dynamics emerged through the human-water
699 interactions and feedbacks. Exploration of the causes of the observed behavior must
700 begin with the recognition that the only external drivers are: (i) climate, although in this
701 case this is replaced by the water inflows from the upstream catchment area, as measured
702 at Wagga Wagga (which acts as the surrogate to climate), and (ii) the time series of world
703 rice prices. Apart from these, the entire dynamics is endogenous or internally generated,
704 and emerged in response to these external drivers.

705
706 The figures illustrate the complex feedbacks that the model incorporates. Figure 8 is a
707 demonstration of positive feedback loop mediated by human innovation, i.e. technology,
708 while Figure 10 is a negative feedback loop that is mediated by human awareness of the
709 environment. Figure 9 demonstrates the adaptation of human population, through
710 migration, to such feedbacks through migration. Therefore, human migration, in a sense,
711 facilitates the swing between the positive and negative feedbacks.

712
713 The results in Figure 6 showed that the total irrigation area steadily increased until the
714 turnaround that happened around 1980. This corresponds with the emerging appearance
715 of environmental degradation, partly due to agricultural activities (Kandasamy *et al.*,
716 2014). Figure 8 expands upon the modeled dynamics. Irrigated area per capita, which
717 constitutes one of two major inputs for agricultural production (i.e., land and water),
718 contributes to wealth generation. Higher gross basin production per capita implies higher
719 income for households in the community, which through investment in education and
720 training fuels human innovation. Newer agricultural technologies are either invented or
721 adopted that increase crop yields and crop water demand per capita. Humans thus

enhance their capacity to irrigate more land per capita through innovation in all three sections of the MRB. This in turn feeds back to higher agricultural production per capita, fueling the positive feedback even further (Figure 8).

3.3. Co-evolutionary dynamics

The next question is, how did the turnaround happen? In spite of technological innovation, the attractiveness of a settlement reduces with increasing area being irrigated per capita. This influences the pattern of human migration both from outside and from within different sections of the basin (Figure 9). Given that initially the upstream areas were not inhabited, humans first exploited the potential of downstream areas before migrating upstream. Increased migration over time eventually makes upstream areas less attractive as well. The reduction in irrigation potential due to population growth also reflects excessive exploitation of the basin as a whole resulting in, for example, lower environmental flow. The latter, also described by Kandasamy *et al.* (2014) is one of the direct reasons for environmental degradation. Subsequently, humans attempt to balance their urge to maximize (technology mediated) agricultural income and minimize environmental impacts of such activities. They do so by gradually migrating back to downstream sections as they become more aware of environmental degradation. As a result, the total population in the two upstream sections reduces while the population in the most downstream section increases at an even higher rate. Consequently, the attractiveness of the two upstream sections begins to pick up towards the end of 2010 while the attractiveness of the most downstream section does not recover (although it stabilizes).

Figure 10 documents the modeled dynamics of environmental awareness in greater detail. The migration from downstream section to the middle and upstream sections results in water extraction in the two upstream sections that first increases until 1970s and then declines. The water extraction in the most downstream section never declines due to the ensuing migration pattern as demonstrated in Figure 9. As a result, outflow as a fraction of inflow declines until the 1970s. This declining outflow influences the wetland storage,

causing it to severely fall below the critical threshold around 1970. This appears to be a historical moment as it strongly sensitizes the population to environmental degradation due to their production activities and begins to influence the decision of humans where to migrate. Migration to upstream sections drops sharply. Instead they decide to migrate back to the downstream section in an attempt to restore ecosystem services, in a manner that balances nature's demand with their demand to maximize individual livelihood. This feeds back into water extraction patterns, which are now strongly influenced by environmental awareness. As individuals become more aware of their environment, more migrate from upstream sections to the downstream sections in an attempt to restore ecosystem services. By around 2010, the community is extremely sensitive to environmental degradation. This was also concluded by Kandasamy *et al.* (2014), where it was found that in 2007 the era of remediation and environmental restoration started.

These results, once they are organized in this way, point to the presence of *two competing drivers* that are behind the pendulum swing, as shown in Figure 11a. The first one involves a *positive feedback* loop related to the economic system: in this loop the main resources of water, land and humans are combined to produce wealth (in the form of agricultural crop). The wealth leads to advances in technology, which contributes to the attractiveness of the area for expansion of agriculture, which attracts people, and the cycle continues in this way. Liu *et al.* (2014) have explained this growth in terms of the concept of the *human productive force*, illustrating it through the co-evolution of humans and water in the Tarim Basin in Western China over the past 2000 years. The positive feedback loop dominated the Murrumbidgee for the first 80 years.

The second driver, part of the *negative feedback* loop, reflects nature's reaction to the exploitation of water and land. As more and more water is extracted from the river, and more and more land is put to irrigated agriculture, both the riverine and terrestrial environments begin to degrade, and after some time, they begin to impact the farmers either directly (through reduced productivity of the land, cost of the environmental degradation) and indirectly through increased environmental awareness (both locally and globally, through environmental lobbies and through government intervention). In the

case of the Murrumbidgee, this negative feedback became exacerbated due to a persistent severe drought that happened in the 2000s, forcing the hand of humans, as if nature's restorative forces are demanding action from the community.

Consequently, we argue that the “pendulum swing” phenomenon is the result of the self-organization of human-water system, which we claim is a result of balancing productive forces that appeal to individual preferences for wealth and the restorative forces that aim to preserve the natural environment. On the production side, the goal is to utilize water for enterprise and profit and the community's economic well-being. On the restorative side, the goal is to conserve water to satisfy “nature's demand” (e.g., biodiversity, wetland ecology). If nature's demand is not met, extreme events such as droughts have the ability to magnify the effects, then requiring human intervention.

Either way, the competition between water for humans and water for the environment is still principally mediated by humans, acting for themselves and acting for the environment. As indicated in Figure 11a, this is played out in the arenas of technology change and environmental awareness, both facets of human enterprise and endeavor. The pendulum swing resulting from the competition between the productive and the restorative forces is consistent with the Taiji-Tire model outlined in the companion paper by Liu *et al.* (2014), shown in Figure 11b, except that the particular features observed in the Murrumbidgee are a reflection of the particular climatic and socio-economic and politico-legal set up of the region.

3.4. Model sensitivity and robustness

We have performed a sensitivity analysis in order to assess alternate realities that the socio-hydrologic model can generate and to identify sensitive parameters of the model. Table 4 shows the 15 parameters of the model that are analyzed and their assumed realistic ranges. Figure 12 shows the variation in one outcome, variable, namely population, as a result of the variation of parameters one at a time. Each subfigure shows the variation in the simulated population when one of the 15 parameters is varied within

the ranges prescribed in Table 4. It shows that not all parameters have a significant influence on the model outcome. The most sensitive parameters are natural growth rate ψ_n and maximum effective irrigated area $A_{I,max}$. It is not just the timing and the magnitude of the population time series that is affected when parameters are varied. It appears that the model is able to simulate 3 different modes of a socio-hydrologic system, i.e. continued growth, growth followed by decline and no growth, under different parametric perturbations. In most cases, the parameter selections lead to outcomes that are relatively close to the best fit with reality, i.e. growth followed by a decline (Figure 12, thick line). However, perturbations with several parameters (e.g. high natural growth rate ψ_n , low maximum effective irrigated area $A_{I,max}$ or high wetland leakage rate κ) lead to time series that resemble continued growth. On the other hand, perturbation with some other parameters (e.g. high maximum effective irrigated area $A_{I,max}$) lead to low population change along with no development in the basin.

Figure 13 shows the sensitivity index of all system model outputs (Population, Irrigated area, Storage, Wetland storage and Environmental awareness) to parametric variations. It shows that Wetland storage W and Environmental awareness E are sensitive to only a few parameters. This is to be expected since only a few of the model equations are connected to W and E . The parameters that have the largest influence are the wetland leakage rate, the wetland recharge threshold and the wetland danger threshold. Population N , irrigated area A and Storage S are sensitive to more parameters. The population outcome is highly sensitive to maximum effective irrigated and the natural population rate. These parameters limit the growth potential of the population. When this is increased or decreased, it significantly affects the irrigation potential, the growth and the speed of saturation of the basin. For example, with a larger natural population growth rate, it is likely that the carrying capacity of the system will be reached sooner. Finally, Figure 14 presents the three different modes of the various model outcomes that the model can converge to under parametric perturbations. One of the modes is the optimal and most realistic of the outcomes, which is similar to Figure 6. The other mode is one of apparent unbounded growth. When the natural population growth is high, the population and the irrigated area start to grow exponentially. As this development makes the society less

resilient to droughts, the storage is increased as well. However, the modeled time frame is too short to investigate whether this will be followed by a dispersal of the system. The third mode is that of no growth. This happens when the maximum effective irrigated area is low and very little potential for agricultural development exists. The incentive for people to migrate and further develop the MRB is then low. Figure 14 shows how the 3 modes of Population, Irrigated area and Storage are highly inter-connected. For all three, the modes occur for similar parameter selections. The modes for wetland storage occur when the wetland recharge threshold μ are high or low. A higher μ requires higher river discharge before flooding occurs. The opposite happens when μ is low. The environmental awareness is most strongly affected by the Wetland danger threshold W_d .

The sensitivity analysis shows that the model results are (in some cases strongly) affected by parameter selection. This means that the modeling framework may provide equifinal representations of a socio-hydrological reality. The value of field data in such cases cannot be over-emphasized. Another interesting finding of the sensitivity analysis is the discovery of 3 system modes that the model can replicate. This means that the framework allows the flexibility to model diverse socio-hydrological realities. This highlights how socio-hydrologic modeling might be used to simulate other coupled human-water systems.

The development of the model presented in this paper, including the performed sensitivity analysis, shows the potential of using socio-hydrologic modeling to explain observed dynamics in human-water coupled systems. Our model is fundamentally sound conceptually, and is in line with other socio-hydrologic models (e.g. Di Baldassarre, 2013b; Srinivasan, 2013; Elshafei *et al.* 2014; Lui et al., 2014).

4. Conclusions

This paper presents a socio-hydrologic modeling framework that has contributed new insights into the drivers of the co-evolution in the Murrumbidgee River Basin. We use a simple coupled model that attempted to mimic human-water system. A series of

simplifying but plausible assumptions were made (e.g., productivity, growth, migration, water use, ecosystem health, environmental awareness) to configure the model to be able to mimic human-water interactions at a generic level. Clearly such a parsimonious but rudimentary model cannot match the *fine* reality in the Murrumbidgee, which is far more complex. Nonetheless, the model has sufficient degrees of freedom and is mathematically complex. It is possibly because of this that the model development and implementation brought out *key* elements that control the dynamics and organizing principles that may help frame human-water dynamics not only in the Murrumbidgee but in other similar river basins. We therefore encourage the use of our presented approach to other river basins to be able to eventually arrive at generic socio-hydrologic concepts.

The model had two external drivers one climate related and the other socio-economic. The rest of the dynamics was endogenously generated in response to the external drivers and the chosen internal model parameterizations. In spite of the details and the specificity of the model to the Murrumbidgee, one aspect stood out. The model results demonstrated that the emergent dynamics, i.e., pendulum swing, was a result of two internal forces. The first one has to do with the economy, which Liu *et al.* (2014) called “human productive force”, which contributed to the growth in exploitation of land, water and human resources, with technology evolution playing an important role. The second one had to do with the environment, which we call here a “environmental restorative force”. The exploitation of land and water resources led to environmental degradation, which eventually began to act as a constraint, through the intervention of humans responding to the growth of community environmental awareness. It is the balance of these productive (exploitative) and restorative (environmental) forces that has contributed to the emergent dynamics, as shown in in Figure 11a. The model built along these lines, along with the results of model simulations, conforms to the Taiji-Tire Model enunciated by Liu *et al.* (2014) based on a historical socio-hydrologic analysis of the Tarim Basin in Western China, and summarized in Figure 11b. It also has many similarities to a more generic formulation proposed by Elshafei *et al.* (2014), wherein human “demand” for water resources and human “sensitivity” for the environment trade off to determine the (enviro-centric or anthro-centric) “behavioral response” of humans to water use practice.

908

909 The paper modeled two keys to the operation and success of a coupled socio-hydrological
910 system. The first was technology, which was the key to increased basin production
911 through exploitation of the land, water and human resources. The second was
912 environmental awareness, which restricted basin production in order to restore the
913 functioning of ecosystem services to certain extent. Both technology mediated demand
914 for water and human sensitivity for their environment were modeled in broad terms. Any
915 further advance of socio-hydrologic modeling would therefore require considerable
916 research to quantify them in acceptable ways for the purposes of modeling. The other two
917 key factors were external: climate (as reflected in the water inflows) and external socio-
918 economic conditions (as reflected in the world food prices). Therefore the specificity of
919 any socio-hydrologic system, and the differences between several different systems, may
920 be said to arise from the climatic and socio-economic externalities, and the socio-
921 economic and political milieus that govern the evolution of technology and
922 environmental awareness in each of these places.

923

924 The sensitivity study with the model showed that the model is sensitive to perturbations
925 of certain parameter values. This revealed interesting sensitivities of model outcomes to
926 selected parameters and shed light on how the socio-hydrologic model might be used and
927 improved. Our results showed that the mode of a socio-hydrological system functioning
928 (realistic, unbounded growth or no growth) strongly depends on the selection of certain
929 parameter values, e.g. the natural population growth rate, maximum effective irrigated
930 area, wetland recharge rate and the wetland recharge threshold. For the sake of simplicity
931 we considered these values as static, but one can argue that these might also vary in time
932 and space. These parameters were the main factors that restricted or boosted system
933 development. It would therefore be interesting to confirm these findings with other socio-
934 hydrologic modeling studies. The sensitivity study also revealed the insensitivity of
935 model outcomes to other parameters and hence revealed the possibility of equifinal
936 models that are equally capable of representing observed socio-hydrological patterns.
937 Thus the sensitivity analysis revealed some important implications for robust socio-
938 hydrological model identification and parameter selection.

939

940 We used a simplified Sobol' method for our sensitivity analysis. It did not take into
941 account the sensitivity of model outcomes to perturbations of all possible parameter
942 combinations. A detailed sensitivity analysis may be required to better understand the
943 system dynamics if it is sensitive to perturbations of parameter combinations as well. We
944 would also like to emphasize on the need of studying the stability of socio-hydrologic
945 models. As these models consist of coupled nonlinear differential equations, further
946 studying of the stability and sensitivity might shed additional light on how socio-
947 hydrologic models might be applied to different area. This is left to future research.
948 Nonetheless our sensitivity analysis revealed the capacity of the model to represent 3
949 dominant modes of behavior under the same socio-hydro-climatic forcing.

950

951 A natural extension of the analysis would be to explore system dynamics under different
952 socio-hydro-climatic forcings, and initial and boundary conditions. However, the
953 parameters would be kept fixed in this case, for example, fixed at the parameter values
954 found reasonable to represent the socio-hydrological dynamics of the MRB. Such an
955 analysis would explore various co-evolutionary trajectories initiated by different
956 conditions under different forcings in the co-evolutionary space of population, growth,
957 migration, water use, ecosystem health and environmental awareness. Depending on
958 socio-hydrological characteristics, different trajectories might be identified by parts of the
959 co-evolutionary space that these trajectories take the system to in the long run. Such an
960 extended analysis might even reveal socio-hydrological characteristics that result in
961 chaotic system dynamics, where co-evolutionary trajectories that are initially close to
962 each other lead to diverse socio-hydrological outcomes in the long-run. A richer set of
963 dominant modes might then be revealed, each depending on the type of forcings, initial
964 and boundary conditions and socio-hydrological characteristics. This is exciting because
965 the presented socio-hydrologic modeling framework can then be used to replicate and
966 understand alternate socio-hydrological realities. However, this is left for future research.

967

968 In conclusion, this paper has advanced the state of the art of socio-hydrological modeling
969 by making a case for a more general modeling framework that may be transferrable to

other coupled human water systems. It used constitutive relations that may also be explicitly derived based on individual decision making (see for example Lyon and Pande, 2004). For example, it modeled human migration patterns based on an individual's tendency to maximize economic gains. It models technological innovation and adoption as a function of aggregate production at basin scale based on the assumption that technology and wealth are intrinsic to system dynamics (see for example Romer, 1990; Eicher, 1996 on endogenous technological change). The model also incorporated changing values and norms of a society by introducing environmental awareness as another co-evolutionary variable of system dynamics. As a consequence, the model saw the coevolution of human-water system as a competition between 'productive' and 'restorative' forces that emerge from the ensuing dynamics.

Finally, the modeling framework presented here is the first spatially explicit socio-hydrological model that has the capacity to replicate observed patterns of population migration and growth, technological adoption and aggregate production at basin scale. We thus conjecture that the models of this type are capable of mimicking dominant controls on the trajectory of co-evolution of *diverse* coupled human-water systems since they can incorporate such layers of complexity. However, the model presented in this paper focused exclusively on surface water utilization for agriculture and food production. The situation may be different in groundwater dependent ecosystems or in regions where rain-fed agriculture dominates, which may present different contexts within which to develop socio-hydrologic models. Application of models such as these, suitably adapted to these different contexts, may help bring out fundamental differences in the emergent dynamics that may result. In this paper we show how socio-hydrology modeling can be used as a framework to study the co-evolutionary dynamics of complex coupled human-water systems. We hypothesize that this approach, when applied to other systems, can contribute to the development of generic models that can be applied more universally. This is the long-term goal of our research.

Acknowledgements

The work on this paper has been in part supported by a supplementary grant from the US National Science Foundation to the Hydrologic Synthesis project "Water Cycle Dynamics in a Changing Environment: Advancing Hydrologic Science through Synthesis" (NSF grant EAR:0636043). Data used in the modeling analysis was provided by the State Water Corporation of New South Wales, Australia, and we especially thank Adrian Williams, Gurmeet Singh and Daniel Masters for their assistance with data assembly. THMvE is grateful for the Justus and Louise van Effen Research Grant, which enabled him to spend a few months at the University of Illinois, where this work was initiated. We also thank Seline van der Woude from Delft University of Technology for her help with the sensitivity analysis. The present work was partially developed within the framework of the Panta Rhei Research Initiative of the International Association of Hydrological Sciences (IAHS). We are also thankful to the three anonymous reviewers who provided constructive feedback, which helped us to significantly improve the manuscript.

5. References

- ABC, Australian Broadcasting Commission: Angry crowd burns copy of Murray-Darling report. <http://www.abc.net.au/news/2010-10-13/angry-crowd-burns-copy-of-murray-darling-report/2296638> , (last access: Feb 2014), 2014.
- ABS: Australian Yearbook, Australian Bureau of Statistics, available at: <http://www.abs.gov.au/AUSSTATS/abs@.nsf> (last access: May 2013), 2013a
- ABS: Australian Bureau of Statistics, available at: <http://www.abs.gov.au/> (last access: May 2013), 2013b.
- Arkesteijn, L. and S. Pande: On hydrological model complexity, its geometrical interpretations and prediction uncertainty, *Water Resour. Res.*, 49, 7048–7063, doi:10.1002/wrcr.20529, 2013.
- Bois, B., Pieri, C. Van Leeuwen, L. Wald, F. Huard, J.-P. Gaudillere and E. Saur: Using remotely sensed solar radiation data for reference evapotranspiration estimation at a daily time step, *Agric.Forest Meteorol.*, 148(4), 619-630, 2008.
- Chan, Karen, A. Saltelli, and S. Tarantola: Sensitivity analysis of model output: variance-based methods make the difference, *Proceedings of the 29th conference on Winter simulation*, IEEE Computer Society, 1997.
- Chen, H. and M. Li: Environmental tax policy, habit formation and nonlinear dynamics, *Nonlinear Anal.-Real.*, 12, 246–253, 2011.
- Crutzen, P. J. and E. F. Stoemer: The Anthropocene. *Global Change Newsletter*, 41, 17-18, 2000.

1036 Cuypers, J. G. M. and O. Rademaker: An analysis of Forrester's World Dynamics Model,
1037 Automatica, 10, 195–201, 1974.

1038 Davies, E. G. R., and S. P. Simonovic: Global water resources modeling with an
1039 integrated model of the social-economic-environmental system. Adv. in Water
1040 Resour., 34(6), 684-700, 2011.

1041 Di Baldassarre, G., M. Kooy, J. S. Kemerink, and L. Brandimarte: Towards
1042 understanding the dynamic behaviour of floodplains as human-water systems.
1043 Hydrol. Earth Syst. Sci., 17, 3235-3244, 2013a.

1044 Di Baldassarre, G., A. Viglione, G. Carr, L. Kuil, J. L. Salinas, and G. Blöschl: Socio-
1045 hydrology: conceptualising human-flood interactions. Hydrol. Earth Syst.
1046 Sci., 17, 3295-3303, 2013b.

1047 DWR: Water distribution operations in irrigation areas and districts of NSW, New South
1048 Wales Department of Water Resources, Gutteridge, Haskins & Davey, Sydney,
1049 1989.

1050 Eicher, T. S.: Interaction between endogenous human capital and technological change,
1051 Rev. Econ. Stud., 63, 127–144, 1996.

1052 Elshafei, Y., M. Sivapalan, M. Tonts, and M.R. Hipsey: A prototype framework for
1053 models of socio-hydrology: identification of key feedback loops and
1054 parameterisation approach, Hydrol. Earth Syst. Sci., 18, 2141-2166,
1055 doi:10.5194/hess-18-2141-2014, 2014.

1056 Falkenmark, M. and M. Lannerstad: Consumptive water use to feed humanity - curing a
1057 blind spot. Hydrol. and Earth Sys. Sci., 9(1-2), 15-28, 2005.

1058 Fedotov S., D. Moss and D. Campos: Stochastic model for population migration and the
1059 growth of human settlements during the Neolithic transition. Phys. Rev. E, 78,
1060 026107, 2008.

1061 Fenicia, F., H. H. G. Savenije, P. Matgen and L. Pfister: Understanding catchment
1062 behavior through stepwise model concept improvement. Water Resour. Res., 44,
1063 W01402, doi: 10.1029/2006WR005563., 2008.

1064 Forrester, J. W.: World Dynamics, Wright-Allen, Cambridge, Massachusetts, 1971.

1065 Gleick, P. H. and M. Palaniappan: Peak water limits to freshwater withdrawal and use.
1066 Proc. Nat. Acad. of Sci., 107(25), 11155-11162, 2010.

1067 Gorman, E.: Growing rice on the Murrumbidgee River: cultures, politics, and practices of
1068 food production and water use, 1900 to 2012, J. Austral. Studies, 37 (1) 96-115,
1069 2013.

1070 Grafton, R. Q., J. Pittock, R. Davis, J. Williams, G. Fu, M. Warburton, B. Udall, R.
1071 McKenzie, X. Yu, N. Che, D. Connell, Q. Jiang, T. Kompas, A. Lynch, R. Norris,
1072 H. Possingham and J. Quiggin: Global insights into water resources, climate change
1073 and governance. Nature Climate Change, 3, 1-7, doi: 10.1038/NCLIMATE1746,
1074 2012.

1075 Greif, A. and D. A. Laitin: A theory of endogenous institutional change, Amer. Polit. Sci.
1076 Rev., 633-652. doi:10.1017/S0003055404041395, 2004.

1077 Hafi, A., S. Beare, A. Heaney, and S. Page: Water Options for Environmental Flows,
 1078 ABARE eReport 05.12, prepared for the Natural Resource Management Division,
 1079 Australian Government Department of Agriculture, Fisheries and Forestry,
 1080 Canberra, November, 2005.

1081 Hayami, Y. and V. W. Ruttan: Factor prices and technical change in agricultural
 1082 development: The United States and Japan, 1880-1960. *J. Polit. Econ.* , 78(5), 1115-
 1083 1141, 1970.

1084 Jakeman, A. J. and R. A. Letcher: Integrated assessment and modelling: features,
 1085 principles and examples for catchment management. *Env. Model. & Softw.*, 18,
 1086 491–501, 2003.

1087 Kallis, G.: When is it coevolution? *Ecol. Econ.*, 62, 1–6, 2007.

1088 Kallis, G.: Coevolution in water resource development: The vicious cycle of water supply
 1089 and demand in Athens, Greece. *Ecol. Econ.*, 69, 796-809, 2010.

1090 Kandasamy, J., Sounthararajah, D., Sivabalan, P., Chanan, A., Vigneswaran, S., and
 1091 Sivapalan, M.: Socio-hydrologic drivers of the pendulum swing between
 1092 agricultural development and environmental health: a case study from
 1093 Murrumbidgee River basin, Australia, *Hydrol. Earth Syst. Sci.*, 18, 1027-1041,
 1094 doi:10.5194/hess-18-1027-2014, 2014.

1095 Kelly, R. A. A. J., Jakeman, O. Barreteau, M. E. Borsuk, S. ElSawah, S. H. Hamilton, H.
 1096 J. Henriksen, S. Kuikka, H. R. Maier, A. E. Rizzoli, H. van Delden and A. A.
 1097 Voinov: Selecting among five common modelling approaches for integrated
 1098 environmental assessment and management. *Env. Model. & Softw.*, 47 , 159-181,
 1099 2013.

1100 Kumar, P.: Typology of hydrologic predictability, *Water Resour. Res.*, 47, W00H05,
 1101 doi:10.1029/2010WR009769, 2011.

1102 Liu, Y., Tian, F., Hu, H., and Sivapalan, M.: Socio-hydrologic perspectives of the co-
 1103 evolution of humans and water in the Tarim River basin, Western China: the Taiji-
 1104 Tire model, *Hydrol. Earth Syst. Sci.*, 18, 1289-1303, doi:10.5194/hess-18-1289-
 1105 2014, 2014.

1106 Lyon, K., and S. Pande: The costate variable in a stochastic renewable resource model.
 1107 *Nat. Resour. Model.*, 19(1), 45-66, 2006.

1108 Maneta, M.P., M. O. Torres, W. W. Wallender, S. Vosti, R. Howitt, L. Rodrigues, L. H.
 1109 Bassoi, and S. Panday: A spatially distributed hydroeconomic model to assess the
 1110 effects of drought on land use, farm profits, and agricultural employment. *Water*
 1111 *Resour. Res.*, 45, doi: 10.1029/2008WR007534, 2009.

1112 Ostrom, E.: A general framework for analyzing sustainability of social-ecological
 1113 systems. *Science*, 325, 419-422, 2009.

1114 Pande, S.: Quantile hydrologic model selection and model structure deficiency
 1115 assessment 1: Theory, *Water Resour. Res.*, 49, 5631–5657, doi:10.1002/
 1116 wrccr.20411, 2013.

1117 Pande, S., B. van den Boom, H. H. G. Savenije, and A. K. Gosain (2011). Water
 1118 valuation at basin scale with application to western India, *Ecol. Econ.*, 70, 2416–
 1119 2428, doi:10.1016/j.ecolecon.2011.07.025.

1120 Pande, S., L. A. Bastidas, S. Bhulai and M. McKee: Parameter dependent convergence
 1121 bounds and complexity measure for a class of conceptual hydrological models, *J.*
 1122 *Hydroinform.*, 14(2), 443–463, 2012.

1123 Pande, S. and Ertsen, M.: Endogenous change: on cooperation and water availability in
 1124 two ancient societies, *Hydrol. Earth Syst. Sci.*, 18, 1745–1760, doi:10.5194/hess-18-
 1125 1745-2014, 2014.

1126 Pande, S., M. Ertsen and M. Sivapalan: Endogenous technological and population change
 1127 under increasing water scarcity. *Hydrol. Earth Syst. Sci.*, 18, 3239–3258,
 1128 doi:10.5194/hess-18-3239-2014, 2014.

1129 Pulido-Velazquez, M., J. Andreu and A. Sahuquillo: Economic optimization of
 1130 conjunctive of surface and groundwater at the basin scale. *J. Water Resour. Plan.*
 1131 *Manage.*, 132(6), 454–467, 2006.

1132 Röckström, J., W. Steffen, K. Noone, Å. Persson, F. S. Chapin, III, E. Lambin, T. M.
 1133 Lenton, M. Scheffer, C. Folke, H. Schellnhuber, B. Nykvist, C. A. De Wit, T.
 1134 Hughes, S. van der Leeuw, H. Rodhe, S. Sörlin, P. K. Snyder, R. Costanza, U.
 1135 Svedin, M. Falkenmark, L. Karlberg, R. W. Corell, V. J. Fabry, J. Hansen, B.
 1136 Walker, D. Liverman, K. Richardson, P. Crutzen, and J. Foley.: Planetary
 1137 boundaries: Exploring the safe operating space for humanity. *Ecology and Society*,
 1138 14(2): 32, available at: <http://www.ecologyandsociety.org/vol14/iss2/art32/>, 2009.

1139 Roderick, M. L.: Introduction to special section on water resources in the Murray-Darling
 1140 Basin: Past, present, and future. *Water Resour. Res.*, 47, W00G01, doi:
 1141 10.1029/2011WR010991, 2011.

1142 Romer, P.: Endogenous technological change, Part 2: The problem of development: a
 1143 conference of the Institute for the Study of Free Enterprise Systems (October 1990),
 1144 *J. Polit. Econ.*, 98, S71–S102, 1990.

1145 Rosero, E., Z. L. Yang, T. Wagener, L. E. Gulden, S. Yatheendradas and G. Y. Niu:
 1146 Quantifying parameter sensitivity, interaction, and transferability in hydrologically
 1147 enhanced versions of the Noah land surface model over transition zones during the
 1148 warm season. *J. Geophys. Res.: Atmospheres* (1984–2012), 115(D3), 2010.

1149 Saltelli, A.: Making best use of model evaluations to compute sensitivity
 1150 indices. *Computer Physics Communications*, 145(2), 280–297, 2002.

1151 Saltelli, A., M. Ratto, S. Tarantola, and F. Campolongo: Sensitivity analysis practices:
 1152 Strategies for model-based inference. *Reliability Engineering & System*
 1153 *Safety*, 91(10), 1109–1125, 2006.

1154 Savenije, H.H.G.: Equifinality, a blessing in disguise?, *Hydrol. Process.*, 15(14), 2835–
 1155 2838, 2001.

1156 Savenije, H.H.G., A.Y. Hoekstra and P. van der Zaag: Evolving water science in the
 1157 Anthropocene. *Hydrol. Earth Syst. Sci.*, 18, 319–332, 2014.

1158 Sivapalan, M.: Predictions under Change: Water, Earth and Biota in the Anthropocene.
 1159 White Paper produced for NSF, available at: [http://cwaces.geog.uiuc.edu/](http://cwaces.geog.uiuc.edu/synthesis/reports/index.html)
 1160 [synthesis/reports/index.html](http://cwaces.geog.uiuc.edu/synthesis/reports/index.html), 2011

1161 Sivapalan, M., L. Zhang, R. Vertessy, R. and G. Blöschl: Downward approach to
 1162 hydrological prediction. *Hydrol. Process.*, 17: 2099. doi: 10.1002/hyp.1426, 2003.

1163 Sivapalan, M., H. H. G. Savenije and G. Blöschl: Socio-hydrology: A new science of
 1164 people and water. *Hydrol. Process.*, 26, 1270–1276, doi: 10.1002/hyp.8426, 2012.

1165 Sivapalan, M., M. Konar, V. Srinivasan, A. Chhatre, A. Wutich, C. A. Scott, J. L.
 1166 Wescoat and I. Rodriguez-Iturbe: Socio-hydrology: Use-inspired water
 1167 sustainability science for the Anthropocene. *Earth's Future*, 2, 225-230,
 1168 doi:10.1002/2013EF000164, 2014.

1169 Srinivasan, V.: Coevolution of water security in a developing city. *Hydrol. Earth Syst.*
 1170 *Sci. Discuss.*, 10, 13265-13291, 2013.

1171 Sobol', I. M.: Sensitivity analysis for nonlinear mathematical models, *Math. Modell.*
 1172 *Comput. Exp.*, 1, 407 – 414, 1993.

1173 Sobol', I. M.: Global sensitivity indices for nonlinear mathematical models and their
 1174 Monte Carlo estimates, *Mathematics and Computers in Simulation*, 55, (1-3), 271-
 1175 280, 2001.

1176 Song, X., B. A. Bryan, K. I. Paul and G. Zhao: Variance-based sensitivity analysis of a
 1177 forest growth model, *Ecol. Modell.*, 247, 135-143, 2012.

1178 Tang, Y., P. Reed, T. Wagener, and K. Van Werkhoven: Comparing sensitivity analysis
 1179 methods to advance lumped watershed model identification and evaluation, *Hydrol.*
 1180 *Earth Syst. Sci.*, 11(2), 793-817, 2007.

1181 Thompson, S. E., M. Sivapalan, C. J. Harman, V. Srinivasan, M. R. Hipsey, P. Reed,
 1182 A. Montanari, and G. Blöschl: Developing predictive insight into changing water
 1183 systems: Use-inspired hydrologic science for the Anthropocene. *Hydrol. Earth Syst.*
 1184 *Sci.*, 17, 5013–5039, doi:10.5194/hess-17-5013-2013, 2013.

1185 Turner, G. M.: A Comparison of the Limits to Growth with Thirty Years of Reality,
 1186 Socio-Economics and the Environment, in: Discussion (SEED) Working Paper
 1187 Series 2008-09, CSIRO Sustainable Ecosystems, Canberra, Australia, 2008.

1188 UNEP, United Nations Environmental Program: State-and-Trends of the Environment:
 1189 1987–2007, in Fourth Global Environment Outlook: Environment for Development
 1190 Assessment Report, Progress Press, Malta, ISBN 978-92-807-2872-9, 2007.

1191 Vitousek, P. M., J. D. Aber, R. W. Howarth, G. E. Likens, P. A. Matson, D. W.
 1192 Schindler, W. H. Schlesinger, W. H. and D. G. Tilman: Human alteration of the
 1193 global nitrogen cycle: Sources and consequences. *Ecol. Appl.*, 7(3): 737-750, 1997.

1194 Vörösmarty, C. J., P. Green, J. Salisbury, and R. B. Lammers: Global water resources:
 1195 Vulnerability from climate change and population growth, *Science*, 289, 284–288,
 1196 doi:10.1126/science.289.5477.284, 2000.

1197 Vörösmarty, C. J., P. B. McIntyre, M. O. Gessner, D. Dudgeon, A. Prusevich, P. Green,
 1198 S. Glidden, S. E. Bunn, C. A. Sullivan, C. Reidy Liermann and P. M. Davies:
 1199 Global threats to human water security and river biodiversity, *Nature*, 467, 555-561,
 1200 2010.

1201 Wagener, T., M. Sivapalan, P. A. Troch, B. L. McGlynn, C. J. Harman, H. V. Gupta, P.
 1202 Kumar, P. S. C. Rao, N. B. Basu, and J. S. Wilson: The future of hydrology: An

1203 evolving science for a changing world, *Water Resour. Res.*, 46, W05301,
 1204 doi:10.1029/2009WR008906, 2010.
 1205 World Bank: Global Economic Monitor (GEM) Commodities:
 1206 <http://database.worldbank.org>, (last access: July 2013), 2013.
 1207 Zalasiewicz, J., M. Williams, W. Steffen and P. Crutzen: The new world of the
 1208 Anthropocene. *Env. Sci. Tech.*, 44(7), 2228-2231, 2010.
 1209 Zehe, E. and M. Sivapalan: Threshold behavior in hydrological systems as (human) geo-
 1210 ecosystems: manifestations, controls and implications. *Hydrol. Earth Syst. Sci.*,
 1211 13(7), 1273-1297, 2009.
 1212

1213 **List of Tables and Figures:**

1214 **Table 1:** Model initial condition setup

1215 **Table 2:** Definitions of the parameters of the coupled human-water system model and the
1216 chosen magnitudes of parameter values.

1217 **Table 3:** Calibrated constitutive relations needed to completed model specification

1218 **Table 4:** Parameters tested during the sensitivity analysis, including the minimum and
1219 maximum values of the tested parameter range.
1220

1221 **Figure 1:** Location of the Murrumbidgee Basin within the Murray-Darling River Basin
1222 (taken from Kandasamy *et al.*, 2014)

1223 **Figure 2:** Model domain and the discretization into three settlements (downstream,
1224 middle stream and upstream).

1225 **Figure 3:** Schematic diagram describing the framework adopted in the model for internal
1226 relocation of humans between the three settlements (See Equations 2-4).

1227 **Figure 4:** Conceptual framework coupling the five subsystems (Hydrology, Population,
1228 Irrigation, Ecology and Environmental Awareness) and the cross-system feedbacks.
1229 Green: positive feedback; Red: negative feedback.

1230 **Figure 5:** External drivers of the socio-hydrologic system (a) world food (rice) prices
1231 (taken from the World Bank), and (b) measured discharge at Wagga Wagga.

1232 **Figure 6:** Observed (based on Kandasamy *et al.*, 2014) and modeled Pendulum Swing in
1233 the Murrumbidgee Basin. Observed times series of **(a)** reservoir storage, **(b)** total
1234 population within basin, **(c)** total irrigated area, and **(d)** irrigation water use. Modeled
1235 time series of **(e)** expansion of reservoir storage capacity, **(f)** total human population, (g)
1236 total irrigated area, and (h) irrigated water extraction, over the study period.

1237 **Figure 7:** Calibrated constitutive relationships: a) environmental awareness E vs.
1238 population growth rate α_E ; b) reservoir storage S vs. population growth rate α_S ; c)
1239 technology T vs. population growth rate α_T ; d) Gross Basin Product vs. technology T ; e)
1240 water shortage days n vs. rate of change of environmental awareness ε (red dot
1241 represents the forgetting rate); f) technology T vs. crop water demand γ_s and crop yield
1242 γ_r (see Table 2 for more details).

Figure 8: Time variation of socio-economics: a) irrigated area per capita for each of the three settlements; b) Gross Basin Product in \$/capita; c) crop yield γ_r , crop water demand γ_s and the technology factor α_T ; and d) technology T.

Figure 9: Time variation of population dynamics: a) attractiveness factor for each of the three settlements; b) rate of external migration; c) rates of internal relocation between the three settlements; and d) size of population in the three settlements.

Figure 10: Time variation ecology-environmental awareness: a) rates of water extraction in the three settlement and total rate of water extraction; b) environmental (out)flow to downstream wetlands as a ratio of inflow at Wagga Wagga; c) wetland storage and wetland danger threshold; and d) environmental awareness.

Figure 11: a) positive and negative feedback loops that are built into the model; b) Taiji-Tire model representation of the dynamics operating within the Murrumbidgee River Basin (Taiji-Tire model is concept borrowed from Liu *et al.* 2014).

Figure 12: Modeled time series of total population for different values of the tested parameters. All subplots correspond to one tested parameter, the separate lines represent model outcome for a given parameter.

Figure 13: Sensitivity index S_i for all parameters, indicating the sensitivity of population P , irrigated area A , storage S , wetland storage W and environmental awareness E to the parameter selection.

Figure 14: Three model modes for population, irrigated area, water storage, wetland storage and environmental awareness: realistic (solid), increasing (dashed) and declining (dash-dot).

1269 **Table 1:** Model initial condition setup

Model initial condition (t=0)				
Variables	Unit	Downstream settlement	Middle Stream settlement	Upstream settlement
S	[m ³]	0	0	0
N	[capita]	5000	0	0
a_i	[km ² /capita]	0.03	0	0
E	[-]	0	0	0
W	[m ³]	5000	-	-

1270

Table 2. Definitions of the parameters of the coupled human-water system model and the chosen magnitudes of parameter values.

Variables	Unit	Description	Eq.	Domain	Value
c	[day ⁻¹]	Environmetal awareness memory correction coefficient	(18)	Population	0.5
β	[-]	Runoff coefficient	(4)	Hydrology	0,01
A^c	[km ²]	Physical catchment area	(4)	Hydrology	20.000
γ_s	[m ³ day ⁻¹ km ⁻²]	Crop water demand	(4)	Irrigation	10.000
T	[-]	Technology	(8)	Internal	-
γ_r	[ton km ⁻²]	Crop yield per unit area	(5)	Internal	-
δ	[day]	Drought threshold	-	-	50
μ	[m ³ day ⁻¹]	Wetland recharge treshold	(5)	Ecology	10 ⁸
W_d	[m ³]	Wetland danger treshold	-	Environmental awareness	300
n	[day]	Days of environmetal degradation	(6)	Internal	-
κ	[day ⁻¹]	Wetland leakage rate	(5)	Ecology	0,001
ψ_n	[day ⁻¹]	Natural population growth rate	(2)	Population	0,006
ψ_m	[day ⁻¹]	External migration rate	(2)	Population	-
ψ_r	[day ⁻¹]	Internal relocation rate	(2)	Population	-
A_{max}	[km ²]	Effective irrigated area	-	-	2.000
ζ	[-]	Envnvironmental awareness dissipation rate	-	-	0.005
φ_i	[km ² capita ⁻¹]	Attractiveness of settlement i	(3)	Population	-
ε	[day ⁻¹]	Rate of change of environmental awareness	(7)	Environmental awareness	-
r	[cap km ⁻² day ⁻¹]	Attractiveness coefficient	(4)	Population	1
Q	[m ³ day ⁻¹]	Discharge	(5)	Hydrology	-
f_p	[\$ ton ⁻¹]	Product of crop price	(7)	-	-

1275 **Table 3.** Calibrated constitutive relations needed to completed model specification

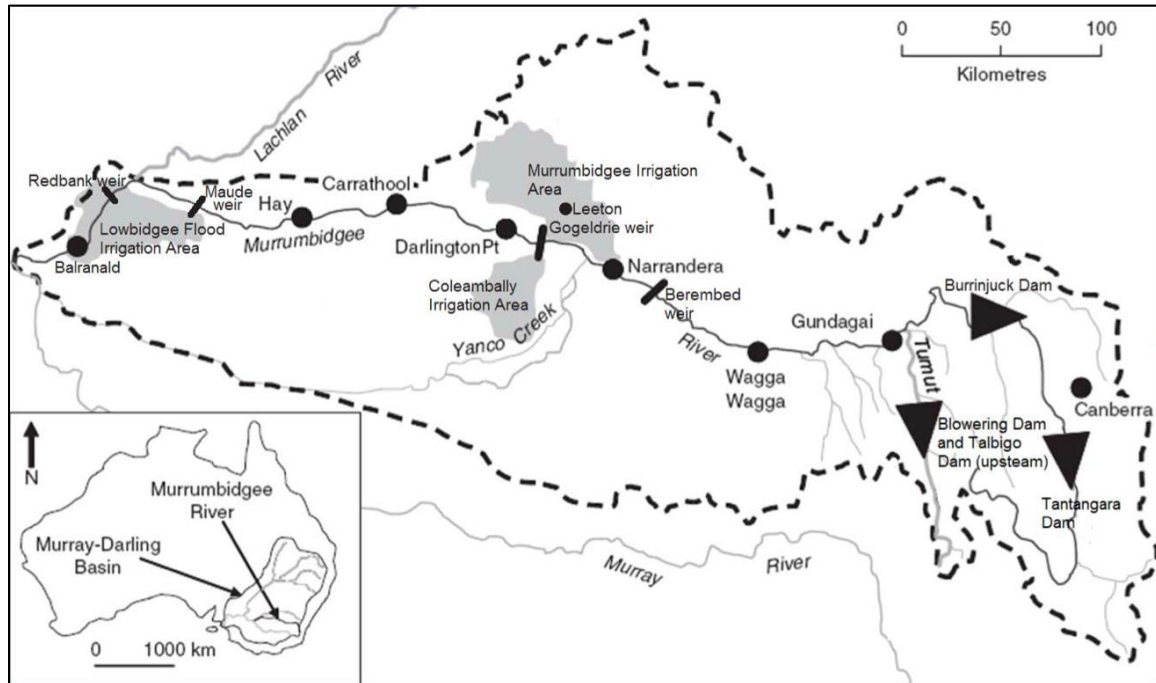
Domain	Calibration constitutive relationship
Technology	$T = [0.1 + 0.9e^{-0.07P_{GB}}]^{-1}$
Irrigation	$\alpha_S(S) = 0.42 \times 10^{-8}S$
Irrigation	$\alpha_T(T) = 0.06 - 0.0732e^{-0.2T}$
Irrigation	$\alpha_E(E) = 0.03[e^{-E} - 1]$
Irrigation	$\gamma_S(T) = 8000e^{-0.4T} + 4500$
Irrigation	$\gamma_r(T) = [0.75 + 0.833e^{-0.75T-0.75}]^{-1}$
Population	$\psi_m(\phi_i) = 0.145 - 0.4205 [1 + \exp(6.35 \psi_i + 0.635)]^{-1}$
Environmental Awareness	$\varepsilon(n) = \begin{cases} 0.0019\{e^{0.0085n} - 1\}; & n > 0 \\ -\zeta; & n = 0 \end{cases}$

1276
1277

Table 4: Parameters tested during the sensitivity analysis, including the minimum and maximum values of the tested parameter range.

Variables	Description	Value	Min	Max
c	Environmental awareness memory correction coefficient	0.5	0	1
β	Runoff coefficient	0.01	0	1
A^c	Physical catchment area	20000	0	40000
δ_1	Drought threshold	50	1	500
δ_2	Drought threshold	50	1	500
δ_3	Drought threshold	50	1	500
μ	Wetland recharge treshold	10^8	10^6	10^{10}
W_d	Wetland danger treshold	0.03	0	0.1
κ	Wetland leakage rate	0.001	0.001	0.05
ψ_n	Natural population growth rate	0.006	1	10000
$A_{1,max}$	Max. effective irrigated area	2000	1	10000
$A_{2,max}$	Max. effective irrigated area	2000	1	10000
$A_{3,max}$	Max. effective irrigated area	2000	1	0.2
ζ	Envnvironmental awareness dissipation rate	0.005	0	1
r	Attractiveness coefficient	1	0.001	0.2

1284
1285



1286
1287
1288

1289 **Figure 1:** Location of the Murrumbidgee Basin within the Murray-Darling River Basin
1290 (Kandasamy *et al.*, 2014)

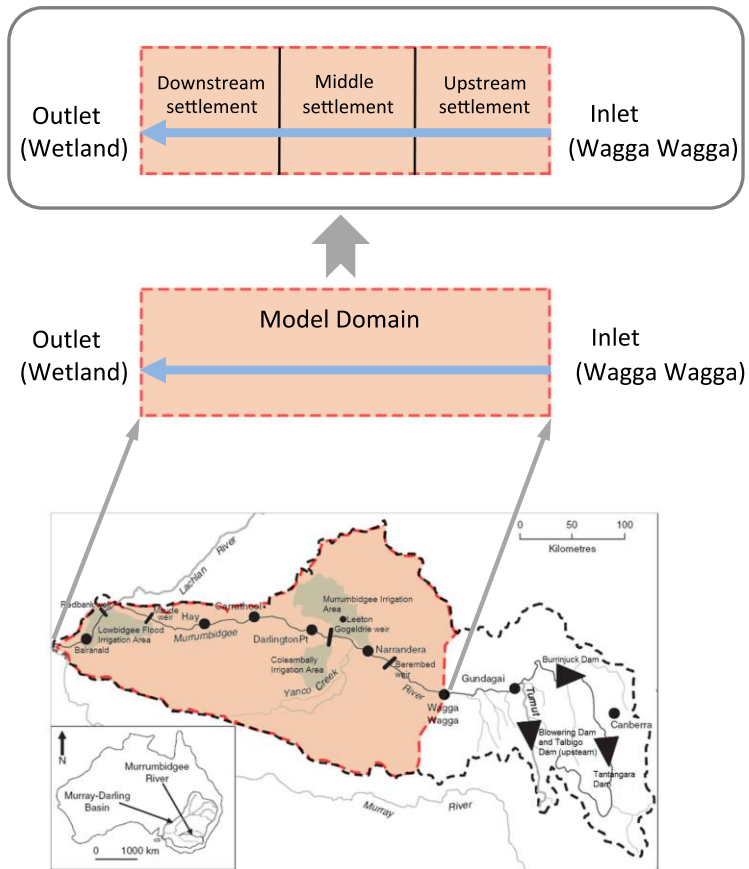


Figure 2: Model domain and the discretization into three settlements (downstream, middle stream and upstream).

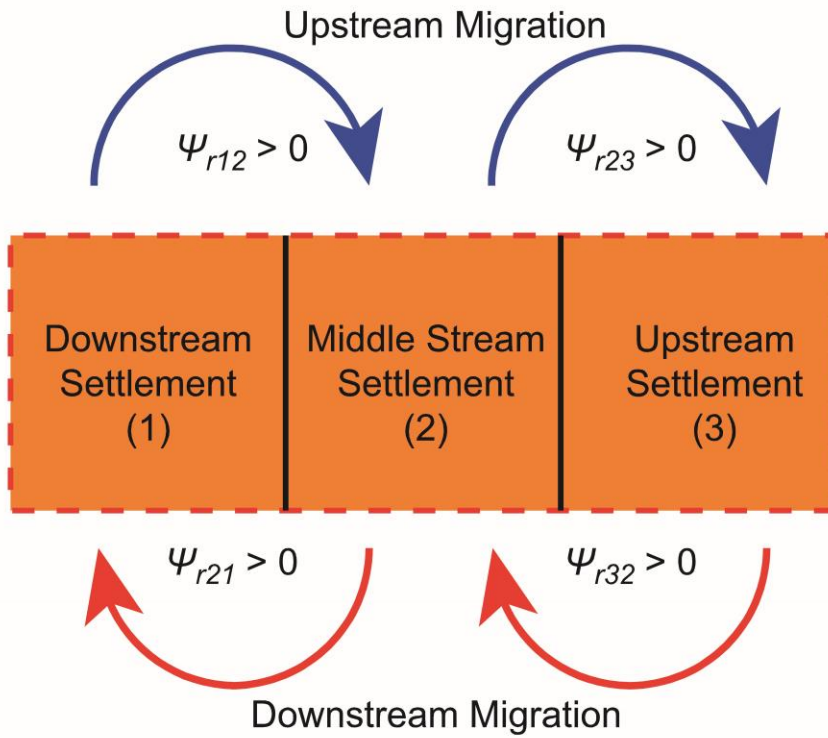


Figure 3: Schematic diagram describing the framework adopted in the model for internal relocation of humans between the three settlements (See Equations 2-4).

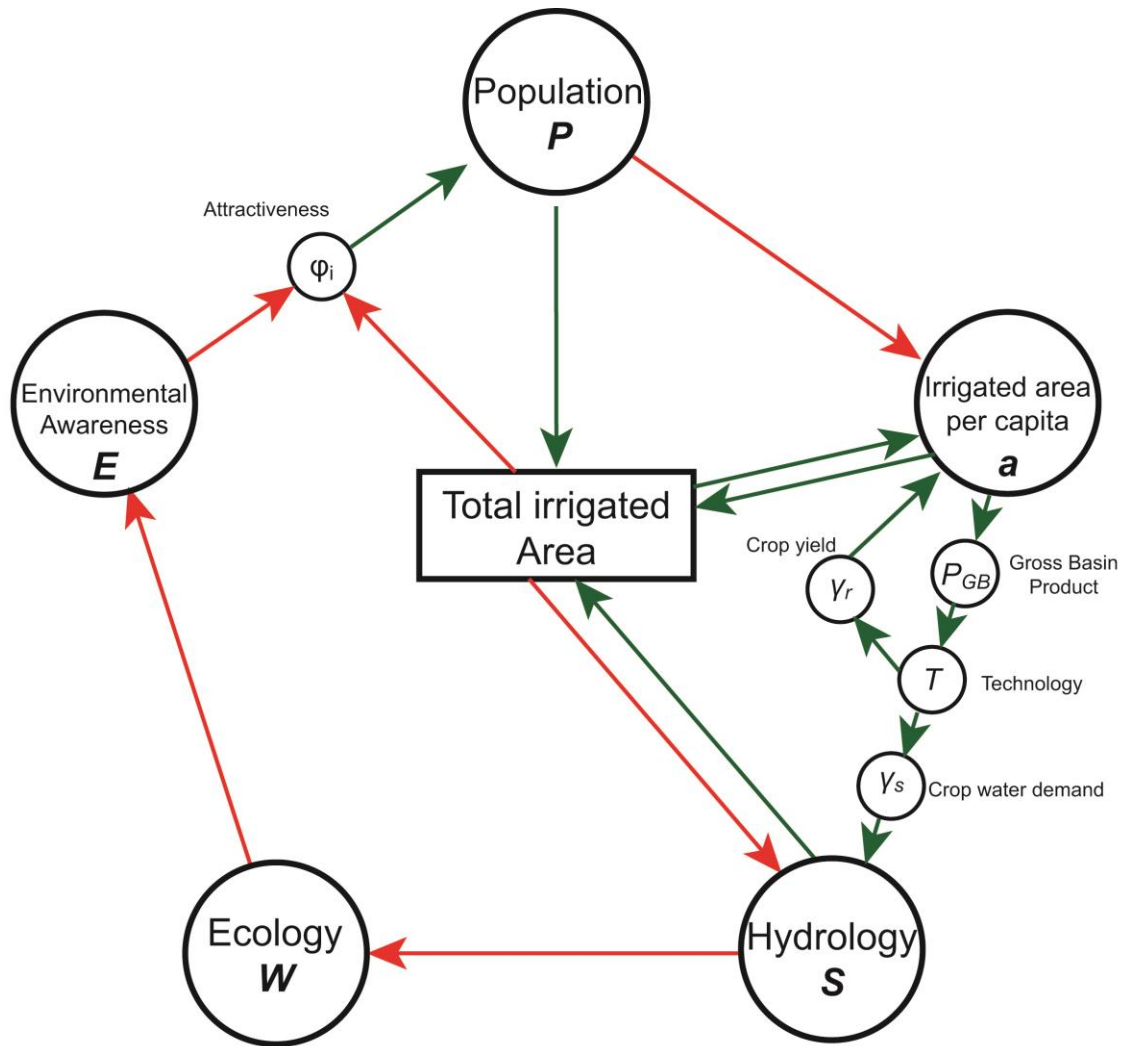


Figure 4: Conceptual framework coupling the five subsystems (Hydrology, Population, Irrigation, Ecology and Environmental Awareness) and the cross-system feedbacks. Green: positive feedback; Red: negative feedback.

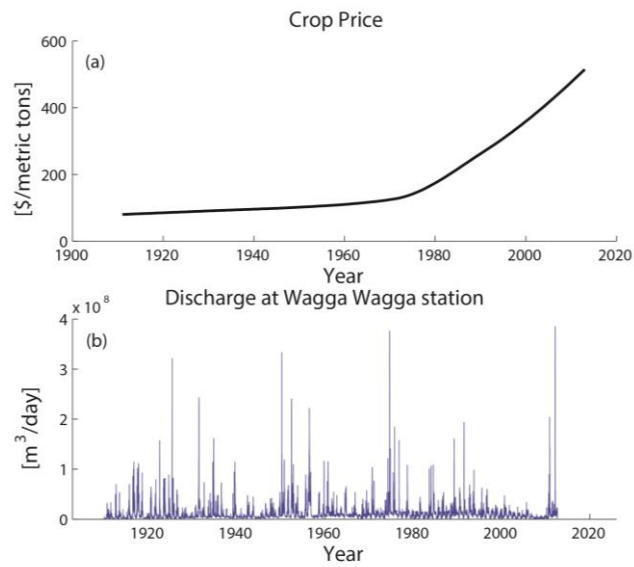


Figure 5: External drivers of the socio-hydrologic system (a) world food (rice) prices (taken from the World Bank), and (b) measured discharge at Wagga Wagga.

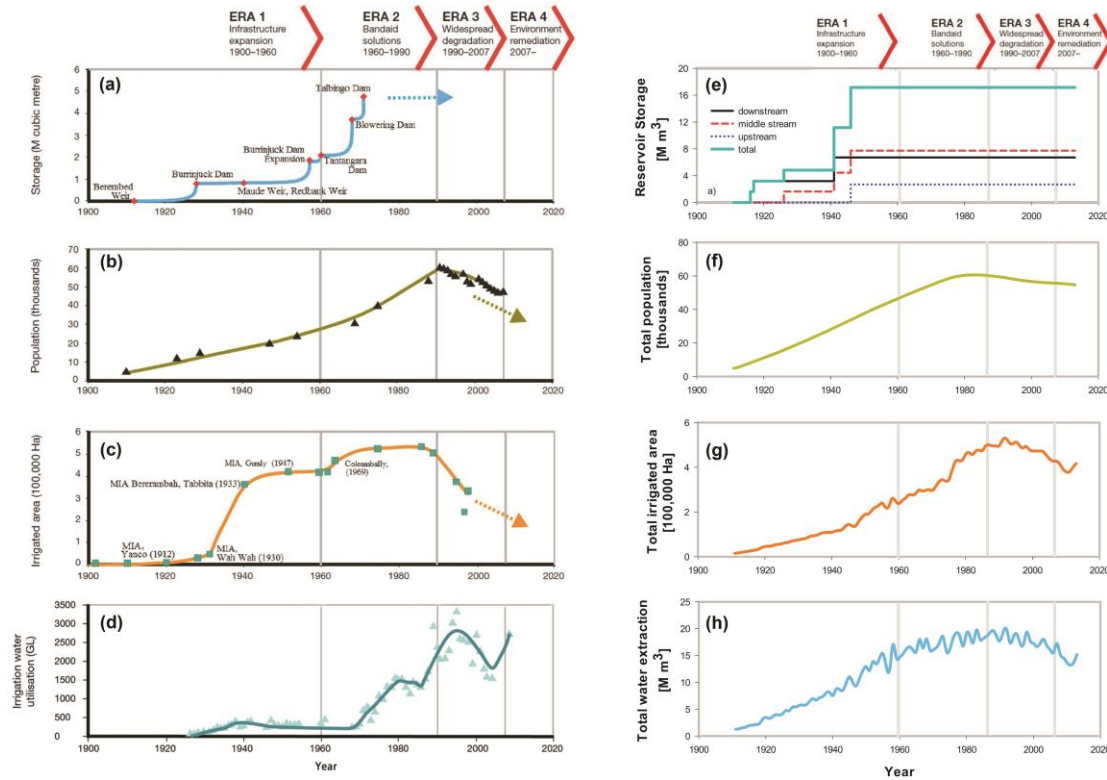
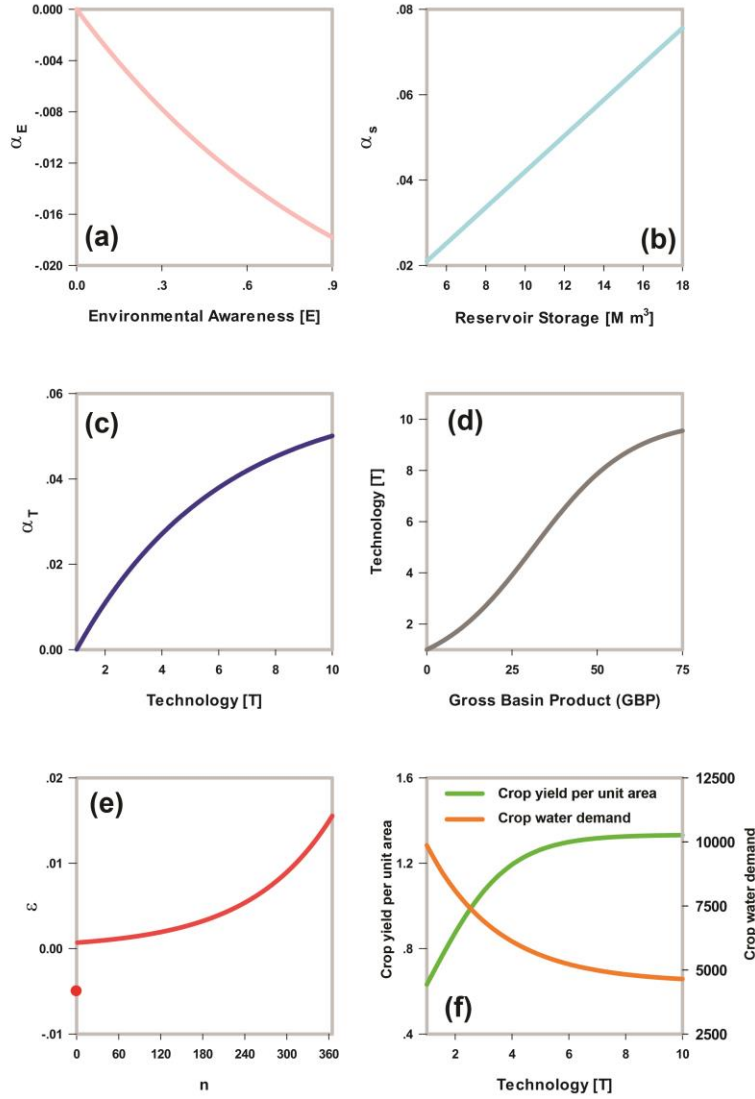


Figure 6: Observed (based on Kandasamy *et al.*, 2014) and modeled Pendulum Swing in the Murrumbidgee Basin. Observed times series of (a) reservoir storage, (b) total population within basin, (c) total irrigated area, and (d) irrigation water use. Modeled time series of (e) expansion of reservoir storage capacity, (f) total human population, (g) total irrigated area, and (h) irrigated water extraction, over the study period.



1314

1315 **Figure 7:** Calibrated constitutive relationships: a) environmental awareness E vs.
 1316 population growth rate α_E ; b) reservoir storage S vs. population growth rate α_S ; c)
 1317 technology T vs. population growth rate α_T ; d) Gross Basin Product vs. technology T ; e)
 1318 water shortage days n vs. rate of change of environmental awareness ϵ (red dot
 1319 represents the forgetting rate); f) technology T vs. crop water demand γ_S and crop yield
 1320 γ_r (see Table 2 for more details).

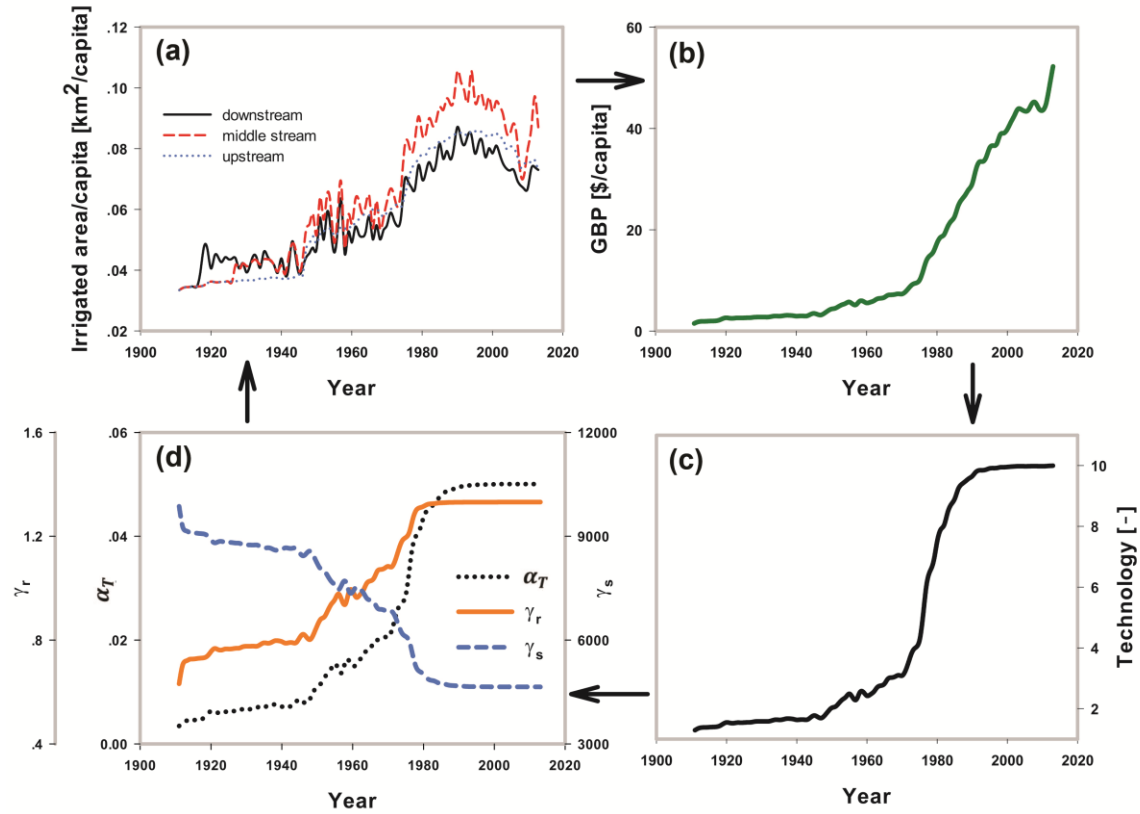


Figure 8: Time variation of socio-economics: a) irrigated area per capita for each of the three settlements; b) Gross Basin Product in \$/capita; c) crop yield γ_r , crop water demand γ_s and the technology factor α_T ; and d) technology T.

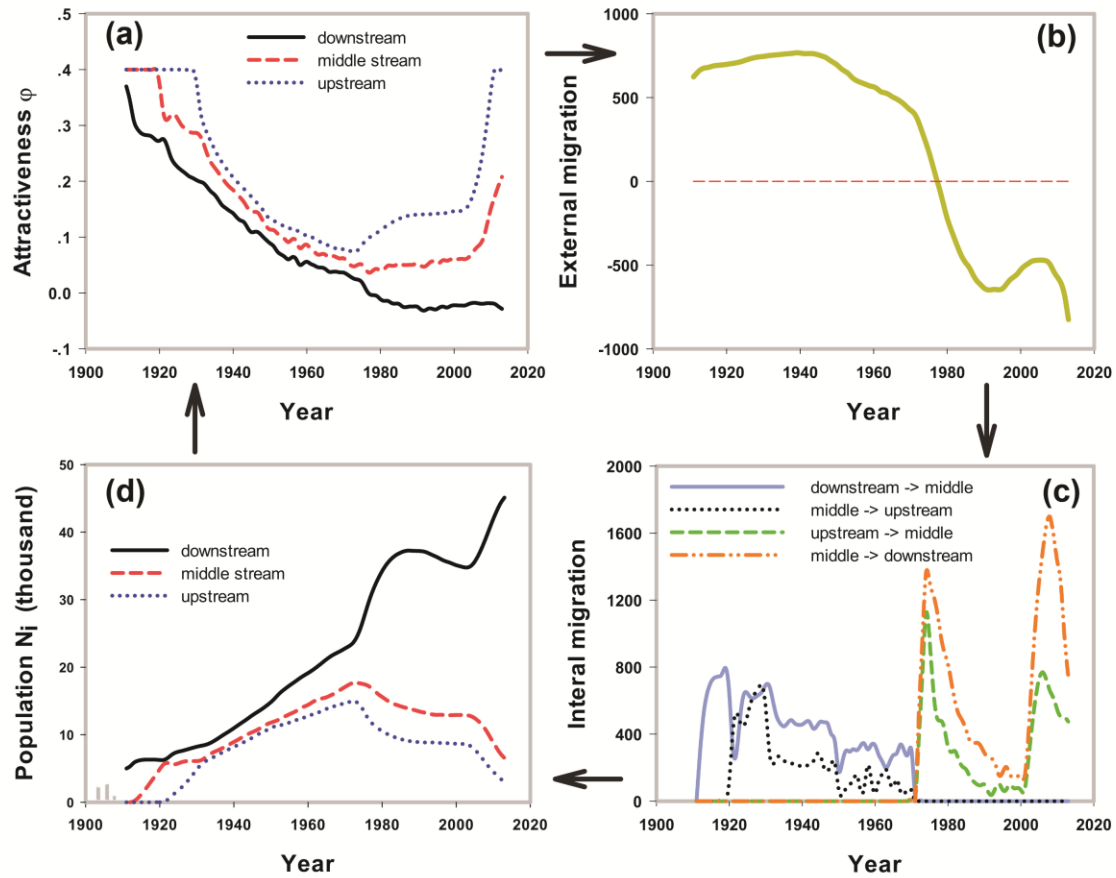


Figure 9: Time variation of population dynamics: a) attractiveness factor for each of the three settlements; b) rate of external migration; c) rates of internal relocation between the three settlements; and d) size of population in the three settlements.

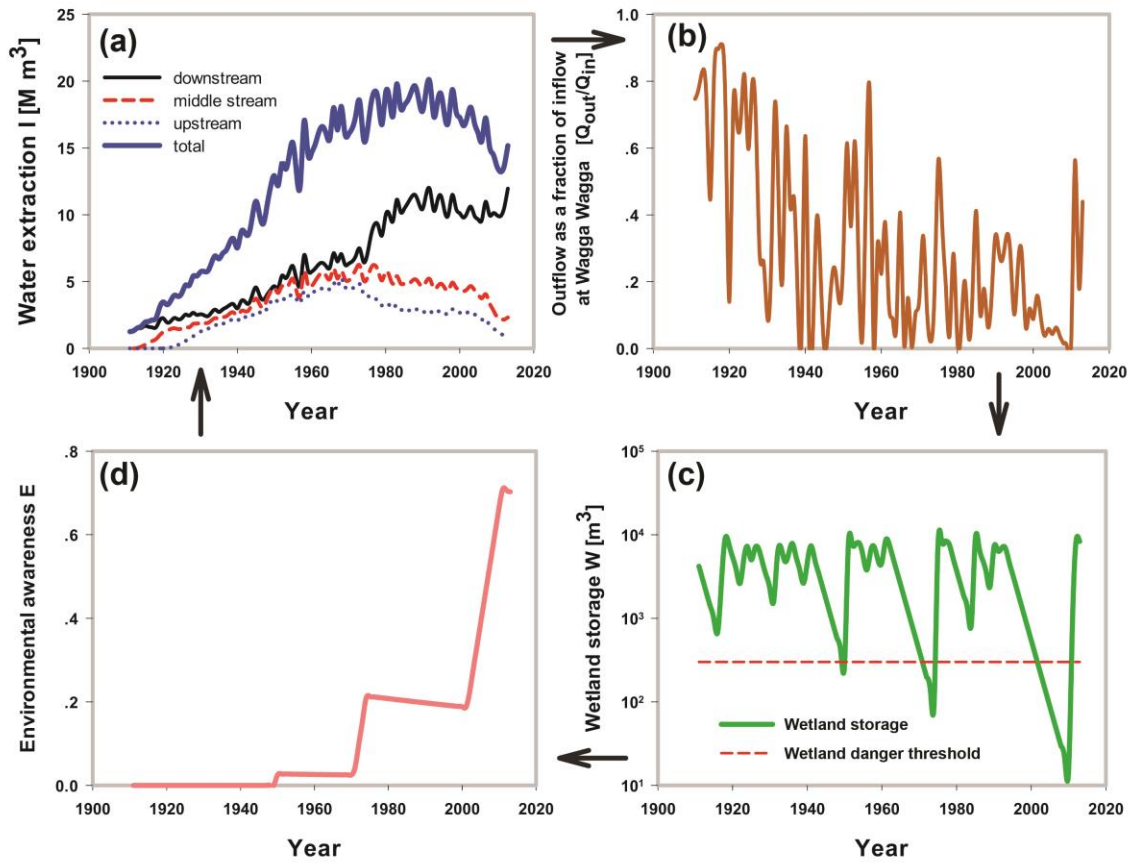
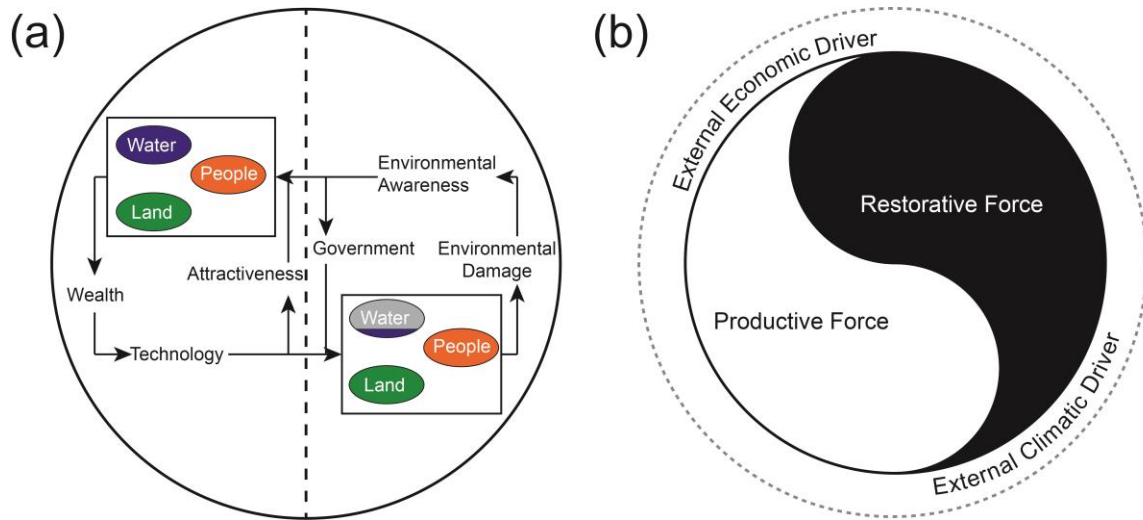


Figure 10: Time variation ecology-environmental awareness: a) rates of water extraction in the three settlement and total rate of water extraction; b) environmental (out)flow to downstream wetlands as a ratio of inflow at Wagga Wagga; c) wetland storage and wetland danger threshold; and d) environmental awareness.

1335
1336
1337



1338
1339
1340
1341
1342
1343

Figure 11: a) positive and negative feedback loops that are built into the model; b) Taiji-Tire model representation of the dynamics operating within the Murrumbidgee River Basin (Taiji-Tire model is concept borrowed from Liu *et al.* 2014).

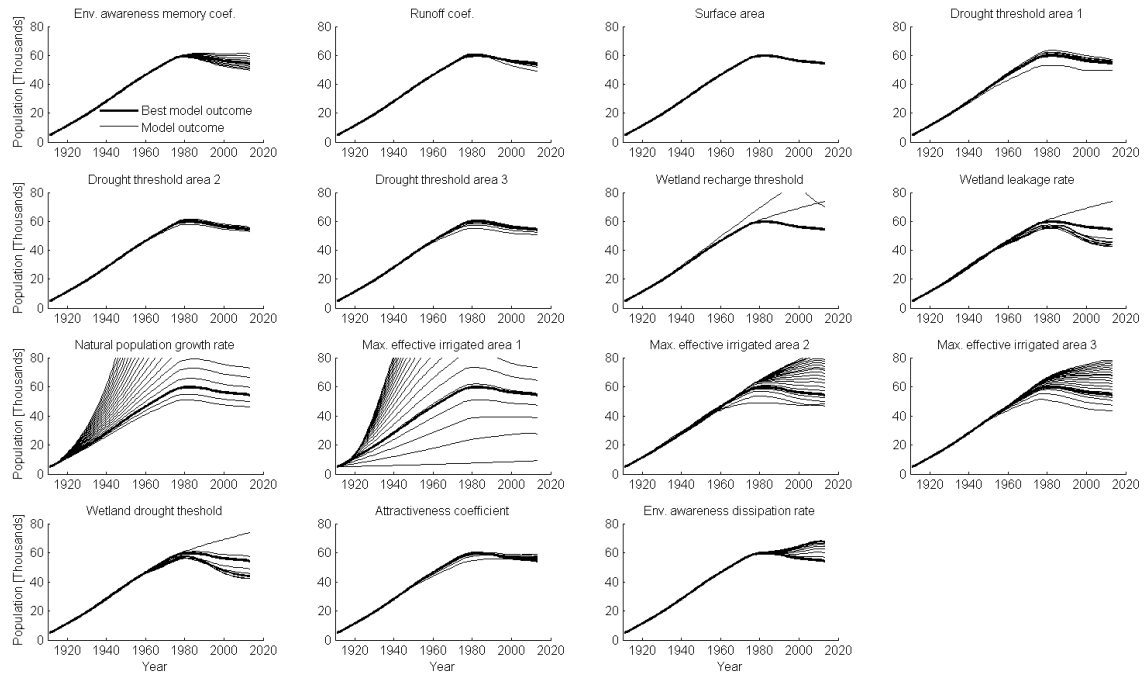
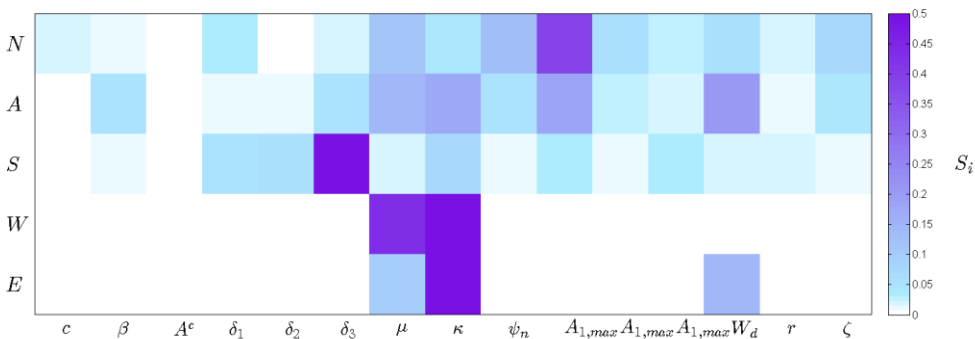


Figure 12: Modeled time series of total population for different values of the tested parameters. All subplots correspond to one tested parameter, the separate lines represent model outcome for a given parameter.

1350



1351
1352
1353
1354
1355

Figure 13: Sensitivity index S_i for all parameters, indicating the sensitivity of population N , irrigated area A , storage S , wetland storage W and environmental awareness E to the parameter selection.

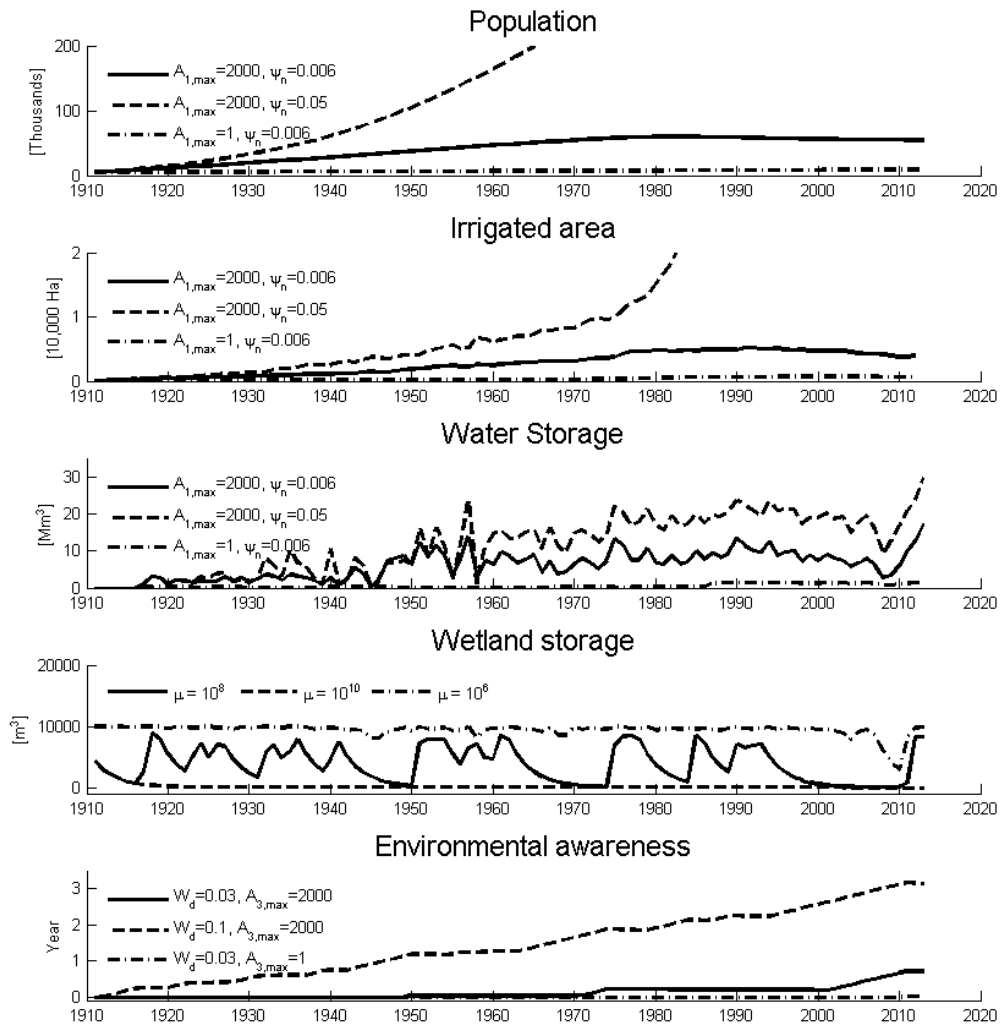


Figure 14: Three model modes for population, irrigated area, water storage, wetland storage and environmental awareness: realistic (solid), increasing (dashed) and declining (dash-dot).