



This discussion paper is/has been under review for the journal Hydrology and Earth System Sciences (HESS). Please refer to the corresponding final paper in HESS if available.

# Hydrologic landscape classification assesses streamflow vulnerability to climate change in Oregon, USA

S. G. Leibowitz<sup>1</sup>, R. L. Comeleo<sup>1</sup>, P. J. Wigington Jr.<sup>1,\*</sup>, C. P. Weaver<sup>2,3</sup>,  
P. E. Morefield<sup>2</sup>, E. A. Sproles<sup>4,\*\*</sup>, and J. L. Ebersole<sup>1</sup>

<sup>1</sup>US EPA, National Health and Environmental Effects Research Laboratory, Corvallis, Oregon, USA

<sup>2</sup>US EPA, National Center for Environmental Assessment, Washington, D.C., USA

<sup>3</sup>The US Global Change Research Program, Washington, D.C., USA

<sup>4</sup>ORISE post-doc, c/o US EPA, National Health and Environmental Effects Research Laboratory, Corvallis, Oregon, USA

\*retired

\*\*now at: Centro de Estudios Avanzados en Zonas Áridas, La Serena, Chile

Received: 28 January 2014 – Accepted: 22 February 2014 – Published: 11 March 2014

Correspondence to: S. G. Leibowitz (leibowitz.scott@epa.gov)

Published by Copernicus Publications on behalf of the European Geosciences Union.

Title Page

Abstract

Introduction

Conclusions

References

Tables

Figures

◀

▶

◀

▶

Back

Close

Full Screen / Esc

Printer-friendly Version

Interactive Discussion



## Abstract

Classification can allow assessments of the hydrologic functions of landscapes and their responses to stressors. Here we demonstrate the use of a hydrologic landscape (HL) approach to assess vulnerability to potential future climate change at statewide and basin scales. The HL classification has five components: climate, seasonality, aquifer permeability, terrain, and soil permeability. We evaluate changes when the 1971–2000 HL climate indices are recalculated using 2041–2070 simulation results from the ECHAM and PCM climate models with the A2, A1b, and B1 emission scenarios. Changes in climate class were modest (4–18 %) statewide. However, there were major changes in seasonality class for five of the six realizations (excluding PCM\_B1): Oregon shifts from being 13 % snow-dominated to 4–6 % snow-dominated under these five realizations, representing a 56–68 % reduction in snowmelt-dominated area. At the basin scale, projected changes for the Siletz basin, in Oregon’s coast range, include a small switch from very wet to wet climate, with no change in seasonality. However, there is a modest increase in fall and winter water due to increased precipitation. For the Sandy basin, on the western slope of the Cascades, HL climate class does not change, but there are major changes in seasonality, especially for areas with low aquifer permeability, which experiences a 100 % loss of spring seasonality. This would reduce summer baseflow, but impacts could potentially be mitigated by streamflow buffering effects provided by groundwater in the high aquifer permeability portions of the upper Sandy. The Middle Fork John Day basin (MFJD), in northeastern Oregon, is snowmelt-dominated. The basin experiences a net loss of wet and moist climate area, along with an increase in dry climate area. The MFJD also experiences major shifts from spring to winter seasonality, representing a 20–60 % reduction in snowmelt-dominated area. Altered seasonality and/or magnitude of seasonal streamflows could potentially affect survival, growth and reproduction of salmonids in these watersheds, with greatest effects projected for the MFJD. A major strength of the HL approach is that results can be applied to similarly classified, ungedged basins. Information resulting from such

## HESSD

11, 2875–2931, 2014

### Hydrologic landscapes assess vulnerability

S. G. Leibowitz et al.

Title Page

Abstract

Introduction

Conclusions

References

Tables

Figures

◀

▶

◀

▶

Back

Close

Full Screen / Esc

Printer-friendly Version

Interactive Discussion



assessments can help inform management responses to climate change at regional and basin scales without requiring detailed modeling efforts.

## 1 Introduction

Climate change is likely to have significant, long-term implications for freshwater resources. Changes in the amount and intensity of precipitation have been observed across much of the United States (Groisman et al., 2005, 2012). Climate modeling experiments suggest these trends will continue throughout the 21st century, with continued warming accompanied by a general intensification of the global hydrologic cycle (Intergovernmental Panel on Climate Change, 2007; Karl et al., 2009; Kharin et al., 2013). This calls into question the concept of “stationarity” that has provided the foundation for water management for decades (e.g., Milly et al., 2008).

Potential impacts of climate change include transitioning of snow into rain, resulting in diminished snowpack and shifts in streamflow to earlier in the season (Service, 2004; Stewart et al., 2004, 2005; Barnett et al., 2005; Mote et al., 2005; Luce and Holden, 2009; Stewart, 2009; Mote and Salathé, 2010; Abatzoglou, 2011; Fritze et al., 2011; Johnson et al., 2012; Nolin, 2012; US EPA, 2013). Other possible impacts include changes in extreme high and low flow events, alteration of groundwater recharge rates, changes in the fate and transport of nutrients, sediments, and toxic chemicals, and shifts in important aquatic ecosystem processes and functions (Kundzewicz et al., 2007; Karl et al., 2009; Johnson et al., 2012; US EPA, 2013).

The impacts of these changes are expected to vary due to regional differences in meteorological forcing, physiographic setting, and interaction with local ecosystem processes, land use, and water management. In the western US, Fritze et al. (2011) found the timing of streamflow shifting towards earlier in the year in snowpack-dominated watersheds. In the US Pacific Northwest (PNW), the transition from snow to rain is particularly relevant, because considerable portions of the snowpack accumulate close to the freezing point (Nolin and Daly, 2006). As a result, increases in air temperature can

# HESSD

11, 2875–2931, 2014

## Hydrologic landscapes assess vulnerability

S. G. Leibowitz et al.

Title Page

Abstract

Introduction

Conclusions

References

Tables

Figures

◀

▶

◀

▶

Back

Close

Full Screen / Esc

Printer-friendly Version

Interactive Discussion



**Hydrologic  
landscapes assess  
vulnerability**

S. G. Leibowitz et al.

[Title Page](#)[Abstract](#)[Introduction](#)[Conclusions](#)[References](#)[Tables](#)[Figures](#)[⏪](#)[⏩](#)[◀](#)[▶](#)[Back](#)[Close](#)[Full Screen / Esc](#)[Printer-friendly Version](#)[Interactive Discussion](#)

have dramatic effects on seasonal snow accumulation (Sproles et al., 2013) and subsequent contributions of snowmelt to baseflow. Luce and Holden (2009) found statistically significant declines in low flow regimes from 1948 to 2006 in 72 % of PNW study watersheds. This can have significant implications for human water needs for irrigation and drinking water and summer habitat of aquatic biota during the driest portions of the year, when water demand is at its peak.

In the PNW, human demand for water, human land uses within watersheds, and associated impacts on water quality can conflict with needs of aquatic species, often with costly repercussions. For example, expenditures associated with river and stream restoration in the US exceed USD 1 billion annually (Bernhardt et al., 2005), with costs associated with recovery of Pacific salmon in the Snake River basin alone projected to exceed USD 300 million annually (Huppert, 1999). Anticipated changes to streamflow and temperature regimes in the next century for PNW rivers and streams are of significant concern for long-term viability of cold-water salmonids (Beechie et al., 2006; Battin et al., 2007; Mantua et al., 2010). Threatened and endangered status of many of these stocks under the Endangered Species Act often drive water and basin management in the region (McClure et al., 2013). Pacific salmon and trout life histories are cued by hydrologic and thermal regimes, and streamflow and temperature conditions during both winter and summer can strongly regulate survival and growth of salmon embryos and juveniles (Quinn, 2005). Winter flows can cause mortality of juvenile salmon due to displacement, injury, or exhaustion (Tschaplinski and Hartman, 1983), particularly during high-magnitude events that could increase under future climates (e.g., see US EPA, 2013). Increased synchrony of summer low flows and maximum temperatures (Arismendi et al., 2013) may increasingly stress salmonids under future climate change scenarios. Other low flow stresses include increased competition for shrinking space (Chapman, 1966), reduced drift of macroinvertebrate prey and other food sources (Harvey et al., 2006), and increased incidence of disease and parasites (Cairns et al., 2005; McCullough et al., 2009) – all factors that can lead to reduced growth and survival of stream salmonids.

# HESSD

11, 2875–2931, 2014

## Hydrologic landscapes assess vulnerability

S. G. Leibowitz et al.

Title Page

Abstract

Introduction

Conclusions

References

Tables

Figures

⏪

⏩

◀

▶

Back

Close

Full Screen / Esc

Printer-friendly Version

Interactive Discussion



5 It is well understood that, while climate change is a global phenomenon, natural resource management responses to climate change (e.g., adaptation) are inherently local (Dozier, 2011). This refers both to spatial scale, as well as to the unique characteristics of a particular decision/management context. This situation presents an important challenge for informing management adaptation with scientific information about future climate risks, as such information is often non-local and somewhat generic. As a result, effort and additional analysis is often required to place the climate information in the context of the management endpoints of concern and other critical aspects of the particular decision or management need (Johnson and Weaver, 2009).  
 10 In particular, there is an urgent need for translational science and science applications that can help practitioners frame their decisions contextually by supporting robust and decision-relevant climate change vulnerability assessments. This would include information on likely changes in the timing and quantity of water resources, the effects of these changes on local watersheds, and possible consequences on local aquatic resources.

15 Context-specific tools and methods for vulnerability assessment provide critical support for needed synthesis and translation at local to regional levels. One way to provide such information is to employ diagnostic approaches that use observation-based studies to analyze historical stream, snow, and climate data over multiple decades (e.g., Safeeq et al., 2013). A second approach is to use prognostic studies that integrate projected climate change into dynamic hydrologic models to better understand how these changes will be expressed hydrologically (Tague and Grant, 2009; Elsner et al., 2010; Surfleet et al., 2012).

25 While informative, both data- and model-based studies have deficiencies. Diagnostic studies are constrained by data limitations and, in the western US, are biased towards wetter areas (for example, see map at <http://waterdata.usgs.gov/or/nwis/rt>). Prognostic studies can provide a more spatially-balanced and deterministic understanding of climate impacts. However, they are commonly applied at broad geographic scales with poor spatial resolution, or focused on gaged basins to allow for model validation

(Sivapalan et al., 2003). Deficiencies in process understanding also constrain the quality of information that models can provide.

In contrast, a classification-based approach to assessing climate impacts on hydrologic systems could support a broad-scale analysis that provides a systematic understanding of how climate affects the hydrologic cycle across geographies (Sawicz et al., 2011; Safeeq et al., 2013). In particular, the hydrologic landscape (HL) classification developed by Wigington et al. (2013) for the state of Oregon provides (a) integrated measures of the key drivers of the hydrologic characteristics of watersheds, and (b) an approach for coupling these drivers with information about potential future climate change to trace multiple, management-specific pathways of climate change impacts. This contextualization of often hard-to-interpret climate information offers the possibility of more effectively supporting the needs of practitioners involved in the management of landscapes and watersheds in the face of both climate change and other stressors.

The purpose of this paper is twofold: first, we provide results from an analysis for the state of Oregon, using the HL classification to show how results from six potential future climate realizations may impact water resources. Results are presented statewide and for three case study basins representative of different regions across Oregon. Implications of these results for the magnitude and timing of water resources are discussed, as well as vulnerability of salmonids, which are an important water-dependent resource. Second, through the use of this case study we provide a proof-of-concept application of this approach to support climate-related decision-making: i.e., integration of the HL approach with information about potential future climate change. This type of focused exploration can also be leveraged to advance a broader dialogue about the need for, and lessons learned from, such approaches to inform management-relevant climate change vulnerability assessment.

## HESSD

11, 2875–2931, 2014

### Hydrologic landscapes assess vulnerability

S. G. Leibowitz et al.

Title Page

Abstract

Introduction

Conclusions

References

Tables

Figures

⏪

⏩

◀

▶

Back

Close

Full Screen / Esc

Printer-friendly Version

Interactive Discussion





and elsewhere in the Pacific Northwest, precipitation and temperature variability is influenced by ocean surface temperature fluctuations such as the El Niño-Southern Oscillation and the Pacific Decadal Oscillation (Fleming et al., 2007).

Precipitation follows a Mediterranean climate, with the greatest amounts during winter months. The abundance of winter precipitation results in the accumulation of a seasonal snowpack in the Cascades, with annual average depths ranging from 7620 to 13970 mm (Ruffner, 1985). There is less overall precipitation east of the Cascades, but snowfall can still be considerable in the higher elevations (Leibowitz et al., 2012). Although the Coast Range has the highest precipitation in the state, snowfall is relatively low overall (annual average of 25–76 mm) because of its lower elevation. Snowfall in the Willamette Valley is not common.

## 2.2 Initial 1971–2000 hydrologic landscape maps

Wigington et al. (2013) developed an HL classification using components of the climate-watershed system that control the magnitude, delivery, and movement of water into and through watersheds and stream networks. These components consist of five indices (Figs. S1 and S2 in the Supplement): (1) annual climate, (2) climate seasonality, (3) aquifer permeability, (4) terrain, and (5) soil permeability. These indices were calculated for each of 5660 assessment units across Oregon (Fig. S3 in the Supplement). The assessment units were defined using drainage areas derived from a synthetic stream network with a 25 km<sup>2</sup> minimum drainage area threshold. The resulting assessment units have an average area of 44 km<sup>2</sup> and partition all of the drainage area for a given stream or river without the units being nested. Below, we review how the climate and seasonality indices were calculated, since they are the basis for the current work; specifics on the aquifer permeability, terrain, and soil permeability indices are found in Wigington et al. (2013).

The climate index is based on the Feddema (2005) Moisture Index (FMI), which was modified from Thornthwaite (1948). The FMI ranges from –1.0 (driest) to 1.0 (wettest), and is calculated as:

Title Page

Abstract

Introduction

Conclusions

References

Tables

Figures

◀

▶

◀

▶

Back

Close

Full Screen / Esc

Printer-friendly Version

Interactive Discussion





$$FMI = \begin{cases} 1 - \frac{PET}{P} & \text{if } P \geq PET \\ \frac{P}{PET} - 1 & \text{if } P < PET \end{cases} \quad (1)$$

where  $P$  and  $PET$  are mean annual precipitation and potential evapotranspiration (in mm), respectively, and  $FMI$  is unitless.  $PET$  was calculated according to Hamon (1961) as a function of saturated water vapor density (a function of temperature,  $T$ , in °C) and average day length. Annual mean  $P$  and  $T$  were based on 30 year (1971–2000) monthly normals, using 400 m PRISM climate data (Daly et al., 2008). The climate index was then defined by assigning each assessment unit to the following Feddema moisture types:  $FMI \geq 0.66 = "V"$  (very wet);  $0.66 > FMI \geq 0.33 = "W"$  (wet);  $0.33 > FMI \geq 0 = "M"$  (moist);  $0 > FMI \geq -0.33 = "D"$  (dry);  $-0.33 > FMI \geq -0.66 = "S"$  (semiarid); and  $FMI < -0.66 = "A"$  (arid).

For the seasonality index, monthly snowmelt modified surplus ( $S'$ , in mm) was calculated for each assessment unit based on Leibowitz et al. (2012):

$$S'_m = S_m - \Delta PACK_m^* = (P_m - PET_m) - (PACK_m^* - PACK_{m-1}^*) \quad (2)$$

where  $S_m$  is monthly surplus (mm) and  $PACK_m^*$  is a bias-corrected, estimated snowpack value for month  $m$  that is restricted to nonnegative values (Leibowitz et al., 2012).  $S'$  represents the amount of water available from atmospheric sources, taking into account potential evapotranspiration and snowpack/snowmelt. If  $\Delta PACK_m^* > 0$ , there is a net increase in snowpack (accumulation exceeds snowmelt), thereby reducing the amount of surplus water ( $S'_m < S_m$ ). Conversely, if  $\Delta PACK_m^* < 0$ , the net decrease in snowpack causes a net release of water (output exceeds any conversion of precipitation into snowpack). In this case  $S'_m > S_m$ . Finally,  $S'_m$  was summed for each of four seasons: fall (October–December), winter (January–March), spring (April–June), and summer (July–September). The seasonality index was then defined by assigning to each assessment unit one of three classes (fall or winter, spring, or summer) based on

## Hydrologic landscapes assess vulnerability

S. G. Leibowitz et al.

Title Page

Abstract

Introduction

Conclusions

References

Tables

Figures

⏪

⏩

◀

▶

Back

Close

Full Screen / Esc

Printer-friendly Version

Interactive Discussion



the season with the maximum average accumulated  $S'$ . Fall and winter seasons (hereafter referred to as winter) were combined because they encompass Oregon's normal Mediterranean wet season.

## 2.3 Projected 2041–2070 hydrologic landscape maps

5 We projected future HL distributions under various climate change realizations by re-calculating the climate and seasonality indices, using mean monthly precipitation and temperature data produced by general circulation models (GCMs) for 2041–2070. This period was selected to represent potential mid-21st century changes. To do this, we used bias-corrected and statistically downscaled (BCSD) climate simulations (Maurer et al., 2007) drawn from the World Climate Research Programme's Coupled Model Intercomparison Project phase 3 (CMIP3; Meehl et al., 2007). BCSD provides simulation output for the period from 1950–2099. While BCSD results are available for more than ten GCMs, we limited our analysis to output from the European Centre Hamburg (ECHAM) and the Parallel Climate Model (PCM) GCMs. Our intent was to bracket a large range of projected changes in climate by including model/emission scenario combinations that were likely to produce both large and small relative changes. This initial choice of the ECHAM and PCM models was motivated by the fact that these models demonstrated among the highest and lowest global climate sensitivities, respectively, to a doubling of  $\text{CO}_2$  across both equilibrium and transient climate sensitivity (Intergovernmental Panel on Climate Change, 2007). However, as will be discussed further, global climate sensitivity rank order does not necessarily hold at regional scales.

For each of the two GCMs, we processed projections under three emissions scenarios drawn from the Intergovernmental Panel on Climate Change's (IPCC) Special Report on Emissions Scenarios (Nakićenović et al., 2000) for a total of six realizations of future climate. Each of these emissions scenarios is intended to describe plausible future development of technology, society and the environment that ultimately correspond to distinct concentrations of greenhouse gases (GHGs). The A2 emissions scenario describes a heterogeneous future, with global per capita wealth and fertility

### Hydrologic landscapes assess vulnerability

S. G. Leibowitz et al.

Title Page

Abstract

Introduction

Conclusions

References

Tables

Figures

◀

▶

◀

▶

Back

Close

Full Screen / Esc

Printer-friendly Version

Interactive Discussion



rates converging very slowly, and technological advancement occurring more slowly and on a regional basis. In contrast, the A1b scenario describes a world of rapid economic growth with global population peaking mid-century as global per capita wealth converges. In this scenario global economies are balanced between fossil and non-fossil energy technologies. The B1 scenario assumes the same population pattern and global convergence as in A1b, but with a strong trend toward adoption of sustainable global solutions and resource-efficient technologies. Selection of these three scenarios provides future climate projections that assume a relatively high (A2), medium (A1b), and low (B1) increase in global GHGs by the end of the 21st Century. However, it is important to note that, for the mid-century timeframe we consider in this paper, the A1b trajectory produces slightly higher GHG concentrations than does the A2 storyline (Nakićenović et al., 2000). Therefore, for the climate simulations we discuss here, the A1b experiments actually reflect greater GHG forcing than the A2 experiments.

A bilinear interpolation method was used to simultaneously project and resample 1/8th degree climate data for the 2041–2070 period for all six realizations. This allowed us to match the projection and 400-meter grid cell size of the 1971–2000 *P* and *T* data used in the original HL classification. Output cell values of the interpolation were determined by weighting the values from the four nearest cell centers by the distance to the center of the output cell in the input grid. We calculated monthly climatologies for 2041–2070 as differences (deltas) from the 1971–2000 initial normals. Changes in precipitation were calculated as a percentage and changes in temperature were calculated in °C. Average monthly precipitation values for 1971–2000 were then multiplied by the percent change deltas to produce projected 2041–2070 average monthly precipitation values (Figs. S4–S9 in the Supplement). The maximum positive percent change in July precipitation (the month with the largest increases in precipitation) across the state ranged from 21 to 76 % over the six realizations, while the minimum negative change ranged from –6 to –44 %. In December (the month with the greatest precipitation), the maximum positive and minimum negative changes were 2 to 39 and –2 to –9 %, respectively. For the 2041–2070 temperature values, the change deltas for

## HESSD

11, 2875–2931, 2014

### Hydrologic landscapes assess vulnerability

S. G. Leibowitz et al.

Title Page

Abstract

Introduction

Conclusions

References

Tables

Figures

◀

▶

◀

▶

Back

Close

Full Screen / Esc

Printer-friendly Version

Interactive Discussion



monthly temperature were added to 1971–2000 average monthly temperature values (Figs. S10–S15 in the Supplement). Temperature differences among the six realizations ranged from 0.9 to 1.5 °C across the state. The 2041–2070  $P$  and  $T$  data were used to calculate projected future values of PET, FMI, and  $S'$ . These were then used to update the climate and seasonality indices and produce projected HL maps for 2041–2070 (Figs. S16–S21 in the Supplement).

We examined maps showing change in climate class, FMI, seasonality class, and  $S'$  by realization for our analysis, and examined trends in monthly  $S'$ . We also produced confusion, or error, matrices (Congalton, 1991) to quantify changes in climate and seasonality class.

## 2.4 Case study basins

Wigington et al. (2013) noted that HL assessment units function as complete watersheds only for first order ephemeral, intermittent, and small perennial streams; they do not serve as the sole water source for higher-order streams and rivers, which receive water from multiple assessment units. They found that HLs aggregated at the river basin scale can be used to estimate the integrated hydrologic conditions and behavior of higher-order streams and rivers. To do this, they introduced the term  $S^*$ :

$$S^* = \frac{\sum_{i=1}^n (A_i \times \max(S'_i, 0))}{\sum_{i=1}^n A_i} \quad (3)$$

where  $S^*$  represents the area-weighted monthly watershed positive surplus from each of the  $n$  assessment units in a basin, and  $A_i$  is the area of assessment unit  $i$ . Deficits (negative  $S'$  values) were not included because it was hypothesized (Wigington et al., 2013) that local assessment units have the ability to contribute water to a mainstem river, but they do not have the ability to remove large amounts of water from the mainstem channel.

We calculated  $S^*$  for three case study basins (Fig. 1): the Siletz and Sandy, in western Oregon, and the Middle Fork John Day in eastern Oregon. Characteristics of the

# HESSD

11, 2875–2931, 2014

## Hydrologic landscapes assess vulnerability

S. G. Leibowitz et al.

Title Page

Abstract

Introduction

Conclusions

References

Tables

Figures

⏪

⏩

◀

▶

Back

Close

Full Screen / Esc

Printer-friendly Version

Interactive Discussion



three basins are provided in Table 1. This includes the  $Q/S^*$  ratio, where  $Q$  is mean 30 year (1971–2000) discharge (mm), based on data from US Geological Survey gage stations. Wigington et al. (2013) use the  $Q/S^*$  ratio to assess whether the river experiences groundwater losses or gains: a  $Q/S^* > 1$  indicates that runoff is greater than available surplus, and thus suggests groundwater imports (changes in storage are assumed to be zero since 30 year normals are used). Conversely, a  $Q/S^* < 1$  suggests groundwater exports, since runoff is less than available surplus.

### 3 Results and discussion

#### 3.1 Statewide

##### 3.1.1 Climate class and Feddema Moisture Index

Projected changes in climate class are distributed throughout Oregon under mid-21st century change realizations (Fig. 2). The percentage of assessment units that change class ranges from 4.4% for the ECHAM\_B1 realization to 18.3% for PCM\_A1b, with a mean of 10% over all six realizations (Table 2). Thus, climate class is expected to be stable for most assessment units. The distribution of units that change class is patchy and fairly evenly distributed across the state. However, two geographic areas experience no change for all six realizations: the southeastern portion of the Coast Range plus the adjacent portion of the southern Willamette Valley in Western Oregon, and an arc-shaped region located between the Ochoco Mountains and Steens Mountain in southeastern Oregon (Figs. 1 and 2).

For all but the two B1 realizations, changes are always to the next driest climate class. This can be seen by examining the confusion matrices (Table 3), where the diagonal represents assessment units that do not change and entries immediately above the diagonal are changes to the next drier class. Under the ECHAM\_B1 realizations, changes are mostly to the next driest class, but there are also assessment units that

Title Page

Abstract

Introduction

Conclusions

References

Tables

Figures

◀

▶

◀

▶

Back

Close

Full Screen / Esc

Printer-friendly Version

Interactive Discussion





realization has the highest rate of climate class change (18.3%; Table 2) and a greater density of changed assessment units (Fig. 2).

### 3.1.2 Seasonality class and surplus

Changes in seasonality class (Fig. 4) have a much more limited geographic distribution, compared with changes in climate class. Seasonality changes are mostly restricted to the Cascade Range in western Oregon, the Blue and Willowa Mountains in northeastern Oregon, and the western portion of the Northern Great Basin. Overall, the percent of assessment units that change seasonality class ranges from 2.6% for PCM\_B1 to 8.9% for ECHAM\_A1b, with a mean of 7.3% over all six realizations (Table 2). However, these rates vary widely by initial seasonality class. For all realizations except PCM\_B1, zero percent of the assessment units with winter seasonality change, and 100% of the units with summer seasonality change. Also, there is a large change in assessment units that initially had spring seasonality, with a fairly uniform range of 56.8% (PCM\_A2) to 68.4% (ECHAM\_A1b). The PCM\_B1 seasonality change rates are clear outliers, when compared with the other five realizations: one of the assessment units with winter seasonality changes (although the rounded percent change is still 0.0%), while the rates for summer and spring seasonality are 42.9 and 19.7%, respectively. For all realizations, a change in seasonality is always to the next earlier season (i.e., spring to winter or summer to spring), except for the one winter assessment unit that changed under PCM\_B1, which switched to spring seasonality (Table 4).

Results for all six realizations suggest large changes from spring and summer to winter seasonality. Based on the initial distribution of seasonality class, 4931 of the state's 5660 assessment units had winter seasonality (Table 4). Since seasonality is defined as the season with the maximum average accumulated  $S'$ , and because  $S'$  excludes precipitation that goes into snowpack (Eq. 2), this means that 87.1% of these units are rain-dominated, with the other 12.9% being dominated by spring or summer snowmelt. Under PCM\_B1 (Table 4), this distribution experiences a decline to 10.4% snowmelt-dominated, representing a 19.3% reduction in the number of snowmelt-dominated

## Hydrologic landscapes assess vulnerability

S. G. Leibowitz et al.

Title Page

Abstract

Introduction

Conclusions

References

Tables

Figures

◀

▶

◀

▶

Back

Close

Full Screen / Esc

Printer-friendly Version

Interactive Discussion



units. Under the remaining five realizations, there is a much larger proportional change: 4.2–5.6% of the assessment units are projected to be snowmelt-dominated, representing a 56.2–67.8% reduction in snowmelt-dominated units – including a complete loss of summer snowmelt units.

The observed changes in seasonality (Tables 2 and 4) can be explained by examining how  $S'$  changes over time. Figure 5a is a time series plot showing the median departures of projected  $S'$  values from the initial  $S'$  values for all assessment units. Through the fall and winter seasons (October through April), departures are mostly positive, i.e.,  $S'$  for projected conditions is greater than initial  $S'$ . Since  $S'$  excludes precipitation that goes into snowpack (Eq. 2), the increases in  $S'$  mean more precipitation is falling as rain, which generates more immediate surplus and less snowpack. In contrast, departures from initial  $S'$  values are mostly negative during the spring and summer months (April through September). Spring and summer precipitation in Oregon is low because of the Mediterranean climate. This means that the projected decreases in  $S'$  are due to reduced winter snowpacks and, subsequently, lower spring and summer snowmelt. However, there is no similar seasonal pattern with respect to percent departures of projected  $S'$  values (Fig. 5b). Note that a negative departure can have a positively valued percent departure if its denominator is negative (i.e., if 1971–2000 conditions during that month represent a deficit).

An example that further illustrates the monthly departure patterns is given in Fig. 6, which shows the spatial distribution in the change in monthly  $S'$  values for the ECHAM\_A1b realization (see Figs. S22–S26 in the Supplement for results for the other five realizations). Increases in  $S'$  occur throughout most of the state from November through April, while decreases dominate from May through October. The areas experiencing the greatest declines in June and July  $S'$  are most of the high elevation mountains, which have the greatest initial snowpack (Figs. 1 and 6); however,  $S'$  continues to increase in the Wallowa Mountains through June. These increases in fall and winter  $S'$ , due to less snowpack, and subsequent decreases in spring and summer  $S'$ ,

# HESSD

11, 2875–2931, 2014

## Hydrologic landscapes assess vulnerability

S. G. Leibowitz et al.

Title Page

Abstract

Introduction

Conclusions

References

Tables

Figures

⏪

⏩

◀

▶

Back

Close

Full Screen / Esc

Printer-friendly Version

Interactive Discussion





because of less snowmelt, cause the projected shifts from spring and summer to winter seasonality (Fig. 4; Tables 2 and 4).

The overall effect of increased winter rain and decreased spring and summer snowmelt on water availability will depend, in part, on intrinsic watershed attributes, such as geology. In areas with low aquifer permeability and mountainous terrain, greater winter rains should generally result in increased discharge and possibly increased flood risk. Summer baseflow in such areas should be reduced, leading to increased drought risk, due to the combination of less snowmelt and low aquifer discharge (resulting from the low aquifer permeability). Areas with high aquifer permeability should also have increased winter streamflow, though perhaps less so because some of the increased winter surplus will go towards groundwater recharge. Impacts to spring and summer baseflow should be mitigated in these high permeability areas by groundwater discharge. In the section below, we provide an overview of the patterns of projected hydrologic changes in select major regions across Oregon.

### 3.1.3 Regional trends

The mountainous portions of western Oregon (Western Cascades, Coast Range, Klamath Mountains; Fig. S27 in the Supplement), which include the Siletz case study basin, are rain-dominated (winter seasonality) with low permeability bedrock. All portions of watersheds in these areas have water surplus that contributes to groundwater recharge and streamflow. Watersheds generally have relatively low internal water storage and water drains rapidly through watersheds and into streams, resulting in very low summer baseflows. For five of the six future realizations, these areas experience general drying (Figs. 3 and 4) that should reduce winter streamflows and have relatively less influence on summer baseflows.

A large area of central Oregon and portions of western Oregon, including the Sandy case study basin, is composed of mountains (High Cascades, east flank Cascades, western portion of the Northern Great Basin; Fig. S27 in the Supplement) with large winter snowpacks and high permeability aquifers (Wigington et al., 2013).

Title Page

Abstract

Introduction

Conclusions

References

Tables

Figures

◀

▶

◀

▶

Back

Close

Full Screen / Esc

Printer-friendly Version

Interactive Discussion





spring (snowmelt-dominated) to winter (rain-dominated). Assessment units with low permeability aquifers will have little internal water storage to moderate the influence of snowpack loss, whereas assessment units with moderate aquifer permeability will be able to store some winter precipitation and release it as summer baseflow.

Special mention should be made of the Willowa Mountains in eastern Oregon (Fig. S27 in the Supplement). The Willowas, along with the High Cascades, have the highest accumulation of snowpack in the state, and are projected to have the smallest relative changes in our six modeling realizations. However, they do experience changes, in which some high elevation assessment units shift from summer (late snowmelt that sustains summer baseflow) to spring seasonality.

## 3.2 Case study basins

### 3.2.1 Siletz River basin

The Siletz River basin (Fig. 1a; Table 1) is in the Oregon Coast Range, and occurs in the first region we described (mountainous portions of western Oregon; Fig. S27 in the Supplement). The Siletz is fairly uniform in HL composition (Fig. 7a), initially having only three classes, and with the same climate, seasonality, and aquifer permeability (Table 5). All of the basin's assessment units have very wet climate, winter seasonality, and low aquifer permeability, and they are dominated by mountainous terrain and low to moderate soil permeability. As a result, each assessment unit makes similar contributions to basin hydrologic function on an areal basis. Because of climate and geologic controls, the timing and magnitude of  $Q$  and watershed positive surplus ( $S^*$ ) are very similar in this basin (Fig. 7b): low infiltration, limited groundwater storage, and a steep dissected landscape result in a fast system that responds quickly to the high winter rain delivery. As a result of these combined factors, Siletz peak discharge is the highest of the three case study basins (Figs. 7–9).  $Q$  slightly lags  $S^*$  during the fall rising period, suggesting that this represents the time needed for soil pore space to fill. This is balanced by a lag in the declines that occur due to reduced precipitation and

Title Page

Abstract

Introduction

Conclusions

References

Tables

Figures

◀

▶

◀

▶

Back

Close

Full Screen / Esc

Printer-friendly Version

Interactive Discussion



# HESSD

11, 2875–2931, 2014

## Hydrologic landscapes assess vulnerability

S. G. Leibowitz et al.

[Title Page](#)[Abstract](#)[Introduction](#)[Conclusions](#)[References](#)[Tables](#)[Figures](#)[⏪](#)[⏩](#)[◀](#)[▶](#)[Back](#)[Close](#)[Full Screen / Esc](#)[Printer-friendly Version](#)[Interactive Discussion](#)

increased PET during spring and summer, suggesting some minimal residual base-flow from storage. Once soil saturation occurs in December (the wettest month), water moves rapidly through the system, and water held within the subsurface is transitioned into streamflow. However,  $Q$  is somewhat higher than  $S^*$  during this winter period, possibly suggesting minimal groundwater imports, in spite of low aquifer permeability. Further evidence of this is a  $Q/S^*$  ratio of 1.07 (Table 1), suggesting that the basin receives small amounts of groundwater inputs.

The impacts of projected climate change are relatively straightforward in the Siletz and similar rain-dominated systems. In terms of class distribution, a small change is expected from some of the very wet (V) to wet (W) climate units, with no change in seasonality (Table 5). The effects are largest under the PCM\_A1b realization: 12.2% of the area is projected to have wet climate, compared to 0.0–4.9% for the other five realizations. This would suggest minimal impacts to the basin. In spite of these switches to drier climate,  $S^*$  increases during the fall and winter in all six realizations due to increased precipitation (Fig. 7c). The largest of these increases in  $S^*$  is seen in January, with an equivalent increase of 29.6 (PCM\_A2) to 77.1 (ECHAM\_A1b) mm. Proportionally, however, these increases are relatively small (Fig. 7d), ranging from 8.0 to 20.8%. Shifts to the drier climate class occur because gains in fall and winter  $S^*$  are offset by losses during the spring and summer.  $S^*$  values are reduced during the spring and summer months, because of increased PET from warmer temperatures. The largest proportional effects occur in June (Fig. 7d), where 100% loss is experienced under three of the realizations, and all but PCM\_B1 (–20.6%) experience a loss of at least 78%.

Because the Siletz basin is groundwater limited and hydrologically responsive, it can be inferred that changes in  $S^*$  will be directly expressed in streamflow. As a result, increased precipitation during the winter months could potentially cause monthly streamflow increases of up to 19%. During spring and summer, there could potentially be a complete reduction in contributions of modified surplus (i.e.,  $S^*$ ) to mean monthly runoff. Spring and summer runoff will probably continue in the Siletz, because

of the limited groundwater contributions. However, any reductions in groundwater imports could further reduce spring and summer discharge.

Changes in flow that result from climate change could have implications for water-dependent uses within the Siletz. Irrigation, industrial, and municipal use of water in the Siletz and similar Coast Range basins is minimal, although such use can be locally important, especially to towns along the coast. These river systems provide critical habitat for salmonids, including threatened coho salmon (*Oncorhynchus kisutch*) (Stout et al., 2012). Modified streamflow and temperature regimes, human-caused habitat modifications, and large-scale changes to ocean conditions and marine productivity are factors implicated in declines of this species in the Oregon coast range (Stout et al., 2012). In an evaluation of potential climate sensitivity, Stout et al. (2012) concluded that reduced summer streamflows and elevated water temperatures would reduce available rearing habitat for coho salmon and increase stresses associated with competition, disease, and elevated metabolic demand.

### 3.2.2 Sandy River basin

The Sandy River basin (Fig. 1b; Table 1) lies on the western slope of Mount Hood in the Oregon Cascades, and occurs in our second region (central Oregon and portions of western Oregon; Fig. S27 in the Supplement). This basin, as well as much of the western slope of the Oregon Cascades, can be broadly classified into two geologic provinces (Tague and Grant, 2004; Tague et al., 2008): upper elevations (High Cascades) are characterized by younger basalts with high aquifer permeability, where rain and snowmelt percolate vertically and provide steady recharge from the onset of the rainy season until snowmelt. The lower elevations (Western Cascades) are characterized by a dissected landscape, low aquifer permeability, and are more responsive to precipitation inputs.

Elevation controls the form of winter precipitation in the Sandy, which can fall as rain, snow, or a rain-snow mix. A general threshold for the rain-snow transition in the Cascades is 800–1200 m (Jefferson et al., 2008; Tague et al., 2008). Above 1200 m,

**HESSD**

11, 2875–2931, 2014

## Hydrologic landscapes assess vulnerability

S. G. Leibowitz et al.

Title Page

Abstract

Introduction

Conclusions

References

Tables

Figures

◀

▶

◀

▶

Back

Close

Full Screen / Esc

Printer-friendly Version

Interactive Discussion



a seasonal snowpack accumulates throughout the winter and melts during the spring (Sproles et al., 2013). The upper portions of the Sandy commonly lie above the rain-snow transition and so have a snowpack with a distinct accumulation and melt period. In contrast, the lower portions are rain-dominated, and snow commonly does not accumulate throughout the winter.

These geologic and climatic controls can be seen in the initial HL distribution for the Sandy (Fig. 8a; Table 5): the upper (eastern) portion is dominated by high aquifer permeability and spring seasonality (due to winter snowpack accumulation and subsequent spring snowmelt). In contrast, the lower (western) portion of the basin is dominated by low aquifer permeability and winter seasonality (due to winter rains). Thus, the HL composition of the Sandy is less uniform than the Siletz. And while all of the units in the Sandy are very wet, as in the Siletz, the delivery and processing of water by these units varies between the upper and lower portions of the basin. These HL characteristics similarly apply to other basins that are a mix of High Cascades and Western Cascades (for example, the Clackamas, North Santiam, McKenzie, and North Umpqua basins; Fig. S3 in the Supplement; Sproles et al., 2013; Surfleet and Tullos, 2013; Wigington et al., 2013).

The mixed hydrologic characteristics of the Sandy River can be seen in Fig. 8b, where  $S^*$  rises steadily in October and November. The lag between the November peak in  $S^*$  and the December peak in  $Q$  is due to the recharge of the high permeability aquifer. After November,  $S^*$  sharply declines, as temperatures fall and more precipitation is stored as seasonal snowpack. Peak winter discharge is therefore lower than in the Siletz (Fig. 7b), since precipitation is not occurring as rain. However,  $Q$  stays elevated through April, because of baseflow contributions from the upper Sandy and stormflow generated by rains in the lower, more hydrologically responsive portion of the basin.  $S^*$  then peaks in May due to snowmelt; this water, along with baseflow, sustains high levels of baseflow through the drier summer months. Over the year,  $Q$  is approximately equal to  $S^*$  ( $Q/S^* = 0.96$ ; Table 1), suggesting minimal groundwater exports from the basin.

## HESSD

11, 2875–2931, 2014

### Hydrologic landscapes assess vulnerability

S. G. Leibowitz et al.

Title Page

Abstract

Introduction

Conclusions

References

Tables

Figures

◀

▶

◀

▶

Back

Close

Full Screen / Esc

Printer-friendly Version

Interactive Discussion



**Hydrologic  
landscapes assess  
vulnerability**

S. G. Leibowitz et al.

[Title Page](#)[Abstract](#)[Introduction](#)[Conclusions](#)[References](#)[Tables](#)[Figures](#)[⏪](#)[⏩](#)[◀](#)[▶](#)[Back](#)[Close](#)[Full Screen / Esc](#)[Printer-friendly Version](#)[Interactive Discussion](#)

The HL climate classes do not change within the Sandy, remaining very wet (V) under all six realizations (Table 5). There are major changes in seasonality, however: units with high aquifer permeability and spring or winter seasonality initially represent 69.8 and 4.0% of basin area, respectively (Table 5). These numbers change to 0.0–56.0 and 17.7–73.8%, respectively, representing a 19.7–100.0% loss in high permeability, spring seasonality class area. Excluding PCM\_B1, the range of loss is 63.3–100.0%. This change is even more dramatic for low permeability areas (Table 5): spring and winter seasonality switch from 4.8 and 21.4%, to 0.0 and 26.2%, respectively, representing a 100% loss of spring seasonality.

These effects on seasonality are reflected in the changes in  $S^*$ . The changes are consistent across all six realizations (Fig. 8c), though the absolute magnitude of the PCM\_B1 results are less than the other five. During the wet winter months,  $S^*$  values increase due to increased precipitation. Compounding the enhanced precipitation are increased temperatures, which cause the rain-snow transition to rise in elevation, resulting in more winter rain. December, which typically has the most precipitation and the highest  $Q$ , experiences a 55.3 (PCM\_B1) to 90.0 (ECHAM\_A2) mm increase in  $S^*$  (Fig. 8c), representing a 36.9–60.1% projected increase (Fig. 8d). This transition from snow to rain also affects  $S^*$  during the drier summer months: reduced snowpack leads to decreased summer snowmelt and large reductions in  $S^*$  (Fig. 8c and d): –73.7 (PCM\_B1) to –192.8 (PCM\_A1b) mm decrease in June, representing 26.6–69.5% reductions. Proportionately, however, the greatest losses of  $S^*$  occur in August (83.8–100.0% reductions). This loss of summer  $S^*$  will affect the ability of the upper Sandy to sustain streamflow during the summer.

The increases in winter  $S^*$  and decreases in summer  $S^*$  suggest the possibility that the Sandy River could experience increased likelihoods of both flooding and drought within the same water year. Greater winter  $S^*$  could increase the likelihood of moderate flooding, but mitigate the likelihood for extreme flooding events due to reductions in snowpack and, therefore, extreme rain-on-snow events (Jones and Perkins, 2010; Surfleet and Tullos, 2013). Decreases in summer  $S^*$  are dramatic, and should result in

lower spring and summer flows. However, the Sandy (and similar western slope basins that have a High Cascades component) occurs within geological formations where deep groundwater could mediate streamflow response (Tague et al., 2008). The high permeability of the upper portions of the basin are expected to mitigate the impacts on streamflow during the summer months, as rain and snowmelt percolate vertically and emerge as springs lower in the watershed (Tague and Grant, 2004, 2009; Tague et al., 2008). Thus, relative changes in streamflow should be less for this basin, because of the presence of the High Cascades deep groundwater system, compared with areas having faster, shallow subsurface systems (Tague et al., 2008).

The Sandy basin supports populations of Pacific salmon and trout including threatened fall and spring Chinook salmon (*O. tshawytscha*), coho salmon, and steelhead (*O. mykiss*) (Good et al., 2005). Spring Chinook salmon, in particular, require cold water during the summer months to support adults holding in the river prior to spawning in the fall, and the deep groundwater sources that provide cold summer streamflows likely contribute to persistence of these populations under current conditions. The degree to which the groundwater-rich upper basin could continue to support over-summering of Chinook salmon and other salmonid populations will be dependent upon the severity of reductions in groundwater recharge and snowmelt runoff. Changes in hydrology could also have implications for winter survival of salmonid embryos and juveniles, if increased winter streamflows result in increased scour of spawning gravels and altered thermal regimes impact metabolism and growth of juvenile salmonids (Crozier et al., 2008).

### 3.2.3 Middle Fork John Day River basin

The Middle Fork John Day (MFJD; Fig. 1c; Table 1) originates on the southeastern flank of the Blue Mountains in northeastern Oregon, and occurs within our third region (the remainder of the Northern Great Basin and the Blue Mountains of eastern Oregon; Fig. S27 in the Supplement). The MFJD is the largest of the three basins, and is much drier than the two western basins. Winters here are colder than the maritime climate

## Hydrologic landscapes assess vulnerability

S. G. Leibowitz et al.

Title Page

Abstract

Introduction

Conclusions

References

Tables

Figures

⏪

⏩

◀

▶

Back

Close

Full Screen / Esc

Printer-friendly Version

Interactive Discussion





of western Oregon, and summer months are dry and warm. As a result, seasonal snowpack dominates the hydrologic character of the region, and snowmelt comprises the majority of runoff. The MFJD is representative of many basins in eastern Oregon that are similarly snowmelt-dominated.

The MFJD is the most diverse of the three basins with respect to HL composition (Table 5; Fig. 9a). The basin is comprised of eleven HL classes, which vary from wet with spring seasonality (i.e., snowmelt-dominated) in the eastern headwaters to dry with winter seasonality at the western mouth (which have the lowest elevations in the valley). Eighty-five percent of the basin has moderate aquifer permeability; the remaining 15 % of the area, located in the middle of the basin (Fig. 9a), has low aquifer permeability. While all of the units in the Siletz and Sandy basins had very wet climate, and therefore contributed to streamflow, the hydrologic character of the MFJD is strongly influenced by headwater assessment units that are wet and snowmelt driven. In addition, this area has moderate aquifer permeability, and so contributes groundwater to baseflow. Although these assessment units comprise only 10 % of basin area, they function as the key sources of water for the system. The rest of the upper basin is mostly units with moist climate and spring seasonality (49 % of basin area), with low to moderate aquifer permeability. These assessment units contribute less water per unit area and less groundwater than the uppermost assessment units. In contrast to the MFJD's upper and middle areas, the lower basin is comprised of units with dry climate (32 % of basin area), and so contribute little to streamflow.

The  $S^*$  and  $Q$  curves for the MFJD further illustrate how winter snowpack dominates its hydrologic character. As occurred with the Sandy basin,  $S^*$  in the MFJD has a bimodal distribution (Fig. 9b). Values rise in November, as precipitation initially occurs as rain, but then fall in December and January due to snow accumulation.  $S^*$  then begins to rise again in March, due to snowmelt, and peaks in May.  $Q$  does not rise in response to the November rains because pore space in the soil column must first fill. Because less rain falls in the MFJD than in the Sandy, and for a shorter period, runoff remains low throughout the winter, though gradually rising through February. Runoff

## HESSD

11, 2875–2931, 2014

### Hydrologic landscapes assess vulnerability

S. G. Leibowitz et al.

Title Page

Abstract

Introduction

Conclusions

References

Tables

Figures

◀

▶

◀

▶

Back

Close

Full Screen / Esc

Printer-friendly Version

Interactive Discussion



then increases in March, in response to snowmelt, and peaks in May during the same month when  $Q$  peaks. Values for both  $S^*$  and  $Q$  are low from July through the end of the water year in September; low summer runoff values partly reflect irrigation usage. Winter and spring recharge of the moderate permeability aquifer in the upper basin provides some groundwater contributions to baseflow. However, the basin's low  $Q/S^*$  ratio (0.78; Table 1) suggests that, overall, the MFJD may be losing groundwater.

While projected climate change scenarios had little effect on the climate class of the Siletz and Sandy basins, this is not the case for the MFJD. Wet assessment units are expected to substantially decline under all but the two B1 scenarios, from a total of 10.0 % of basin area to 0.0–2.2 % (Table 5); all wet climate units disappear under the PCM\_A2 and PCM\_A1b realizations. Under ECHAM\_B1 and PCM\_B1, there is relatively little change in area of wet units (9.1 and 11.3 %, respectively). Area of moist units also decreases for five of the scenarios, from 57.8 to 47.3–56.9 %. Moist units slightly increase in area to 59.2 % under ECHAM\_B1. In contrast to the wet and moist units, dry units mostly increase in area, from 32.3 to 44.8–52.0 % of basin area under all but the B1 realizations; slight reductions to 31.8 % occur for both those realizations. As occurred with the Sandy, the MFJD also is expected to experience major shifts from spring (snowmelt-dominated) to winter (rain-dominated) seasonality (Table 5). Units with spring seasonality decline in area from 59.2 to 23.9–47.6 %, while winter seasonality increases from 40.8 to 52.4–76.1 %. This represents a 19.7–59.6 % reduction in snowmelt-dominated area (43.5–59.6 %, excluding PCM\_B1).

Under all six realizations,  $S^*$  increases in the MFJD during the fall and winter months (Fig. 9c). While the overall trend is similar to the other two basins (Figs. 7c and 8c), the MFJD has the lowest magnitude of change. For example, departures in  $S^*$  for January range from 8.0 (PCM\_B1) to 19.3 (PCM\_A1b) mm, compared with ranges of 29.6–77.1 and 60.6–98.9 mm for the Siletz and Sandy, respectively. While these are the smallest of the basin values on an absolute basis, the January departures represent the largest proportional changes when compared to initial values (Figs. 7d, 8d and 9d): values range from 130.2–312.8 % for the MFJD, vs. 8.0–20.8 and 55.2–90.1 % for the Siletz

# HESSD

11, 2875–2931, 2014

## Hydrologic landscapes assess vulnerability

S. G. Leibowitz et al.

Title Page

Abstract

Introduction

Conclusions

References

Tables

Figures

⏪

⏩

◀

▶

Back

Close

Full Screen / Esc

Printer-friendly Version

Interactive Discussion





changes are low. However, altered thermal conditions during the winter months could have significant ecological repercussions for anadromous fish (McMillan et al., 2012; Falke et al., 2013). Effects on salmonids due to reductions in spring and summer  $S^*$  could be even more severe, due to several factors. First, reductions in the amount of water will mean less available habitat. Second, the timing of minimum summer streamflows may increasingly co-occur with the period of maximum temperatures, resulting in multiple negative effects, including mortality, on cold-water fishes (Arismendi et al., 2013; Ebersole et al., 2014). Third, reduced  $S^*$  during the spring could decrease the number of cold-water patches that salmonids use to escape high mainstem temperatures during late July/early August. Ebersole et al. (2014) examined tributary-mainstem confluences at three basins in northeastern Oregon, including the MFJD. They found that cold-water patches were present at 53% of all observed confluences (60% for the MFJD). Differences in temperature between cold-water patches and corresponding streamflow were greatest during the hottest time of the day, when cold-water fish are most at risk. The single most important factor that predicted the probability of cold-water patch occurrence was May  $S'$  (Ebersole et al., 2014). The effects of climate change on May  $S'$  are likely to be greater than our estimates for  $S^*$ , since the latter does not incorporate moisture deficits (compare Eqs. 2 and 3). Thus, the projected trends in spring  $S^*$  could reduce the number of these cold-water patches. Given the combined effects of these three factors, salmonids in the MFJD could be particularly vulnerable to climate change.

### 3.2.4 Relative vulnerability of salmonids

Based on our analysis of the three case study basins, we would expect the MFJD – and similar basins occurring in the eastern portion of the Northern Great Basin and the Blue Mountains of eastern Oregon (Fig. S27 in the Supplement) – to have the highest vulnerability with respect to both relative loss of winter snowpack and summer streamflow. The basin should also be most vulnerable with respect to impacts to threatened and non-threatened salmonids, due to relatively high magnitudes of changes in habitat

## HESSD

11, 2875–2931, 2014

### Hydrologic landscapes assess vulnerability

S. G. Leibowitz et al.

Title Page

Abstract

Introduction

Conclusions

References

Tables

Figures

⏪

⏩

◀

▶

Back

Close

Full Screen / Esc

Printer-friendly Version

Interactive Discussion



suitability and availability, particularly during the summer months (see also Ruesch et al., 2012). The Siletz basin, as well as other basins within the mountainous portions of western Oregon (Fig. S27 in the Supplement), should be the least hydrologically vulnerable to climate change, since changes in winter  $S^*$  are relatively small, compared to current conditions, and because there is relatively little linkage between winter rains and summer flows. Summer streamflows and temperatures are already a concern in the basin, however, so any decreases in flow or increases in temperature could have negative effects on salmonids. The Sandy basin, as well as others in the High Cascades, east flank Cascades, and eastern portion of the Northern Great Basin (Fig. S27 in the Supplement), should have intermediate vulnerability with respect to hydrology, since the effects of relatively large changes in winter and summer  $S^*$  will increase winter rains and reduce spring and summer snowmelt. However, high permeability aquifers will moderate these impacts. Effects on salmonids will be highly contingent upon the net effects of hydrologic and thermal regime shifts on phenology and environmental suitability for growth, development, and survival (Crozier et al., 2008).

#### 4 Summary and conclusions

We examined how a range of mid-21st century climate change realizations would affect the distribution of HLs in Oregon, using climate output from the ECHAM and PCM general circulation models run with three CO<sub>2</sub> emission scenarios (A2, A1b, and B1). Statewide results found that changes in climate class affected a modest number of study units (4.4–18.3%). However, there were major changes in seasonality class for five of the realizations, with 56.8–68.4% loss of spring seasonality and 100% loss of summer seasonality. Although seasonality changed less under the PCM\_B1 realization – 19.7 and 42.9% for spring and summer seasonality, respectively – the changes were still substantial. Overall, Oregon shifts from initially having 12.9% snow-dominated units to 4.2–5.6% snow-dominated under the five realizations, representing a 56.2–67.8% reduction in snowmelt-dominated units. Under PCM\_B1, snow-dominated area

Title Page

Abstract

Introduction

Conclusions

References

Tables

Figures

◀

▶

◀

▶

Back

Close

Full Screen / Esc

Printer-friendly Version

Interactive Discussion



declines to 10.4%, representing a 19.3% reduction. The shifts in seasonality occur because  $S^*$  generally increases in the fall and winter, representing a loss of snowpack, and decreases in the spring and fall, due to reduced snowmelt.

The specific effects of these changes in timing and delivery of  $S^*$  are mediated by the geology of the basin. We discuss in detail results from three case study basins to demonstrate how the HL approach can be useful for understanding climate change impacts in diverse hydroclimatic and geologic settings, and to illustrate how the approach could support management. Basins such as the Siletz are rain-dominated with low permeability, have relatively low internal water storage and, as a result, water drains rapidly into the streams and produces very low summer baseflows. Because precipitation is already delivered as rain, there is relatively little effect on timing of delivery. Also, because  $S^*$  values are initially large, changes in  $S^*$  are proportionately small. The Sandy basin, however, includes higher elevation areas that accumulate snowpack, and those areas experience shifts from snowmelt-dominated to rain-dominated. While this would be expected to have an effect on spring and summer baseflows, high aquifer permeability in such basins has the potential to moderate these effects. The MFJD, in northeastern Oregon, is the most dependent of the three basins on spring snowmelt. Thus, it is the most impacted area, because of both changes in seasonality and switches to drier climate classes. Moderate aquifer permeability in the upper basin is less able to reduce these impacts, compared with the Sandy. Our analysis suggests that the MFJD and other irrigated areas in semi-arid eastern Oregon could be particularly vulnerable to the effects of climate change. Decreased spring and summer snowmelt from reduced  $S^*$  could also have greater impacts on salmonids in the MFJD and similar areas, compared with other regions.

While the ECHAM model has higher sensitivity to climate change than the PCM model (Intergovernmental Panel on Climate Change, 2007), as discussed previously, we found that statewide changes in climate class (Tables 2 and 3; Fig. 2) and FMI (Fig. 3) were greater for the PCM model. This demonstrates the anticipated regional variability of climate change. In addition, results for statewide seasonality,  $S'$ , and basin

## HESSD

11, 2875–2931, 2014

### Hydrologic landscapes assess vulnerability

S. G. Leibowitz et al.

Title Page

Abstract

Introduction

Conclusions

References

Tables

Figures

⏪

⏩

◀

▶

Back

Close

Full Screen / Esc

Printer-friendly Version

Interactive Discussion



$S^*$  values (Figs. 4, 5, 7, 8 and 9) were variable with respect to the two models. Regarding  $\text{CO}_2$  emissions, results consistently showed greater impacts for the A1b scenario, compared to A2. While the A2 scenario ultimately results in the highest emissions by the end of the 21st Century, A1b produces greater emissions for the mid-century time-frame we consider in this paper (Nakićenović et al., 2000). Thus, our finding of greater impacts under the A1b scenario is consistent with the different trajectories of the A2 and A1b emission scenarios for the mid-century period that we analyze.

In this paper, we have demonstrated that the Wigington et al. (2013) HL approach can provide a method for mapping and interpreting vulnerability to climate change. The HLs provide integrated measures of the key drivers of the hydrologic characteristics of watersheds. This information allows for a broad-scale (e.g., statewide) analysis that provides a systematic understanding of how climate change will impact the hydrologic cycle across geographies. In addition, effects of climate change on individual basins can be evaluated by combining effects of constituent assessment units. We make use of the classification itself – changes in the distribution of the climate and seasonality classes – as well as changes in the variables used to define these classes (FMI, Eq. 1, and  $S'$ , Eq. 2, for assessment units, and  $S^*$ , Eq. 3, for basins) to evaluate these effects. The two modified surplus terms represent the amount of water entering the system from rain and snowmelt, and so are the major drivers of runoff for most of Oregon. We then utilize the relationship between modified surplus and runoff to make inferences about how climate change will affect basin streamflow, using aquifer permeability class to account for the mitigating effects of geology.

Our analysis has several limitations. First, the relationship between modified surplus and runoff is not quantified, so our conclusions regarding future discharge must be interpreted for each basin by examining the relationships between  $Q$  and  $S^*$  (Figs. 7b, 8b, and 9b). Use of a model that estimates  $Q$  from  $S^*$  would allow for more objective conclusions. Second, our analysis makes use of 30 year normals for the 2041–2070 period. As such, our study ignores effects from any future changes in extreme hydroclimatic events. For example, our approach does not address the frequency of the

## HESSD

11, 2875–2931, 2014

### Hydrologic landscapes assess vulnerability

S. G. Leibowitz et al.

Title Page

Abstract

Introduction

Conclusions

References

Tables

Figures

⏪

⏩

◀

▶

Back

Close

Full Screen / Esc

Printer-friendly Version

Interactive Discussion



heaviest downpours, which are likely to increase with climate change (Intergovernmental Panel on Climate Change, 2012). While our analysis can provide managers with an understanding of how average monthly hydrologic conditions will change, the results would not be appropriate for flood or drought planning. Third, the Oregon HLs do not deal with the influences of vegetation, land use, or other human activities – all of which could influence vulnerability to climate change (Nolin, 2012) – although the HL approach could serve as a framework for evaluating these effects (Wigington et al., 2013). These factors could exacerbate or mitigate against climate impacts.

Another possible limitation is that our study does not use the most recently available climate change data. We note that our analysis made use of the CMIP3 multi-model dataset that was assessed in the IPCC fourth assessment report (Intergovernmental Panel on Climate Change, 2007). Although more recent modeling results are available (the CMIP5 ensemble), we did not use these, in part because the model runs assessed in the IPCC fifth assessment report are not yet published. In addition, while CMIP3 represents an earlier generation of models (and greenhouse gas scenarios) compared to CMIP5, most of the basic assumptions and model structures are very similar. Also, the new Representative Concentration Pathways greenhouse gas scenarios map quite closely onto the previous generation (Special Report on Emissions Scenarios) scenarios. Initial diagnostic analysis of results for North America across a wide range of climate variables (e.g., temperature, precipitation, winds, humidity, etc.) and dynamical processes (e.g., El Niño-Southern Oscillation, storm tracks, etc.) conclude that there are few substantive differences in the results and model performance for CMIP3 and CMIP5 (Sheffield et al., 2013a, b).

The strength of our approach is that it can be applied to similarly classified, ungaged basins. In such a case, the  $S^*$  curve for the ungaged basin, which can be produced for any basin in Oregon through the use of the 400 m PRISM data and the Leibowitz et al. (2012) snowmelt model, is compared with the runoff curve from a similarly classified, gaged basin. The interpreted runoff results can then be used to assess overall vulnerability with respect to quantity and timing of discharge, as well as resources and

## HESSD

11, 2875–2931, 2014

### Hydrologic landscapes assess vulnerability

S. G. Leibowitz et al.

Title Page

Abstract

Introduction

Conclusions

References

Tables

Figures

⏪

⏩

◀

▶

Back

Close

Full Screen / Esc

Printer-friendly Version

Interactive Discussion





constituents dependent on or associated with streamflow, such as salmonids. The approach also allows relative ranking of vulnerability, e.g., the MFJD is more vulnerable to climate effects than the Sandy because it is more dependent on snowmelt and has less of a mitigating geology. We believe that such vulnerability information can help inform management responses and adaptation to climate change both at regional and basin scales.

**Supplementary material related to this article is available online at <http://www.hydrol-earth-syst-sci-discuss.net/11/2875/2014/hessd-11-2875-2014-supplement.pdf>.**

*Acknowledgements.* Thanks to Tom Johnson, Anne Nolin, and Alan Vette for useful reviews. We acknowledge the modeling groups, the Program for Climate Model Diagnosis and Inter-comparison and the WCRP's Working Group on Coupled Modelling for their roles in making available the WCRP CMIP3 multi-model dataset. Support for this dataset was provided by the Office of Science, US Department of Energy. The information in this document has been funded entirely by the US Environmental Protection Agency, in part through an Oak Ridge Institute for Science and Education (ORISE) postdoctoral agreement. This manuscript has been subjected to Agency review and has been approved for publication. Mention of trade names or commercial products does not constitute endorsement or recommendation for use.

## References

- Abatzoglou, J. T.: Influence of the PNA on declining mountain snowpack in the Western United States, *Int. J. Climatol.*, 31, 1135–1142, doi:10.1002/joc.2137, 2011.
- Arismendi, I., Safeeq, M., Johnson, S. L., Dunham, J. B., and Haggerty, R.: Increasing synchrony of high temperature and low flow in western North American streams: double trouble for coldwater biota?, *Hydrobiologia*, 712, 61–70, 2013.

**HESSD**

11, 2875–2931, 2014

## Hydrologic landscapes assess vulnerability

S. G. Leibowitz et al.

Title Page

Abstract

Introduction

Conclusions

References

Tables

Figures

◀

▶

◀

▶

Back

Close

Full Screen / Esc

Printer-friendly Version

Interactive Discussion



## Hydrologic landscapes assess vulnerability

S. G. Leibowitz et al.

Title Page

Abstract

Introduction

Conclusions

References

Tables

Figures

◀

▶

◀

▶

Back

Close

Full Screen / Esc

Printer-friendly Version

Interactive Discussion



- Barnett, T. P., Adam, J. C., and Lettenmaier, D. P.: Potential impacts of a warming climate on water availability in snow-dominated regions, *Nature*, 438, 303–309, doi:10.1038/nature04141, 2005.
- Battin, J., Wiley, M. W., Ruckelshaus, M. H., Palmer, R. N., Korb, E., Bartz, K. K., and Imaki, H.: Projected impacts of climate change on salmon habitat restoration, *P. Natl. Acad. Sci. USA*, 104, 6720–6725, doi:10.1073/pnas.0701685104, 2007.
- Beechie, T., Buhle, E., Ruckelshaus, M., Fullerton, A., and Holsinger, L.: Hydrologic regime and the conservation of salmon life history diversity, *Biol. Conserv.*, 130, 560–572, 2006.
- Bernhardt, E. S., Palmer, M., Allan, J., Alexander, G., Barnas, K., Brooks, S., Carr, J., Clayton, S., Dahm, C., and Follstad-Shah, J.: Synthesizing US river restoration efforts, *Science*, 308, 636–637, 2005.
- Cairns, M. A., Ebersole, J. L., Baker, J. P., Wigington Jr., P. J., Lavigne, H. R., and Davis, S. M.: Influence of summer stream temperatures on black spot infestation of juvenile coho salmon in the Oregon coast range, *T. Am. Fish. Soc.*, 134, 1471–1479, 2005.
- Chapman, D. W.: Food and space as regulators of salmonid populations in streams, *Am. Nat.*, 100, 345–355, 1966.
- Congalton, R. G.: A review of assessing the accuracy of classifications of remotely sensed data, *Remote Sens. Environ.*, 37, 35–46, doi:10.1016/0034-4257(91)90048-b, 1991.
- Crozier, L., Hendry, A., Lawson, P., Quinn, T., Mantua, N., Battin, J., Shaw, R., and Huey, R.: Potential responses to climate change in organisms with complex life histories: evolution and plasticity in Pacific salmon, *Evol. Appl.*, 1, 252–270, 2008.
- Daly, C., Halbleib, M., Smith, J. I., Gibson, W. P., Doggett, M. K., Taylor, G. H., Curtis, J., and Pasteris, P. P.: Physiographically sensitive mapping of climatological temperature and precipitation across the conterminous United States, *Int. J. Climatol.*, 28, 2031–2064, doi:10.1002/joc.1688, 2008.
- Dozier, J.: Mountain hydrology, snow color, and the fourth paradigm, *EOS Trans. AGU*, 92, doi:10.1029/2011eo430001, 2011.
- Ebersole, J. L., Wigington Jr., P. J., Leibowitz, S. G., Comeleo, R. L., and Van Sickle, J.: Predicting the occurrence of cold water patches at intermittent and ephemeral tributary confluences with warm rivers, *Freshwater Sci.*, submitted, 2014.
- Elsner, M. M., Cuo, L., Voisin, N., Deems, J. S., Hamlet, A. F., Vano, J. A., Mickelson, K. E. B., Lee, S.-Y., and Lettenmaier, D. P.: Implications of 21st century climate change for the hydrology of Washington State, *Climatic Change*, 102, 225–260, 2010.

## Hydrologic landscapes assess vulnerability

S. G. Leibowitz et al.

Title Page

Abstract

Introduction

Conclusions

References

Tables

Figures

◀

▶

◀

▶

Back

Close

Full Screen / Esc

Printer-friendly Version

Interactive Discussion



- Falke, J. A., Dunham, J. B., Jordan, C. E., McNyset, K. M., and Reeves, G. H.: Spatial ecological processes and local factors predict the distribution and abundance of spawning by steelhead (*Oncorhynchus mykiss*) across a complex riverscape, *PLoS one*, 8, e79232, doi:10.1371/journal.pone.0079232, 2013.
- 5 Feddema, J. J.: A revised Thornthwaite-type global climate classification, *Phys. Geogr.*, 26, 442–466, doi:10.2747/0272-3646.26.6.442, 2005.
- Fleming, S. W., Whitfield, P. H., Moore, R. D., and Quilty, E. J.: Regime-dependent streamflow sensitivities to Pacific climate modes cross the Georgia–Puget transboundary ecoregion, *Hydrol. Process.*, 21, 3264–3287, doi:10.1002/hyp.6544, 2007.
- 10 Fritze, H., Stewart, I. T., and Pebesma, E.: Shifts in Western North American snowmelt runoff regimes for the recent warm decades, *J. Hydrometeorol.*, 12, 989–1006, doi:10.1175/2011jhm1360.1, 2011.
- Good, T., Waples, R., and Adams, P.: Updated status of federally listed ESUs of West Coast salmon and steelhead, NOAA Technical Memorandum NMFS-NWFSC-66, US Dept. Commerce, Seattle, Washington, 2005.
- 15 Groisman, P. Y., Knight, R. W., Easterling, D. R., Karl, T. R., Hegerl, G. C., and Razuvaev, V. A. N.: Trends in intense precipitation in the climate record, *J. Climate*, 18, 1326–1350, doi:10.1175/jcli3339.1, 2005.
- Groisman, P. Y., Knight, R. W., and Karl, T. R.: Changes in intense precipitation over the central United States, *J. Hydrometeorol.*, 13, 47–66, doi:10.1175/jhm-d-11-039.1, 2012.
- 20 Hamon, W. R.: Estimating potential evapotranspiration, *J. Hydraul. Eng. Div.-ASCE*, 87, 107–120, 1961.
- Harvey, B. C., Nakamoto, R. J., and White, J. L.: Reduced streamflow lowers dry-season growth of rainbow trout in a small stream, *T. Am. Fish. Soc.*, 135, 998–1005, 2006.
- 25 Huppert, D. D.: Snake River salmon recovery: quantifying the costs, *Contemp. Econ. Policy*, 17, 476–491, 1999.
- Intergovernmental Panel on Climate Change: Climate change 2007: The Physical Science Basis, Contribution of Working Group I to the Fourth Assessment Report of the Intergovernmental Panel on Climate Change, Cambridge University Press, Cambridge, UK, 2007.
- 30 Intergovernmental Panel on Climate Change: Managing the risks of extreme events and disasters to advance climate change adaptation: a special report of Working Groups I and II of the Intergovernmental Panel on Climate Change, Cambridge University Press, Cambridge, UK, 582 pp., 2012.

## Hydrologic landscapes assess vulnerability

S. G. Leibowitz et al.

Title Page

Abstract

Introduction

Conclusions

References

Tables

Figures

◀

▶

◀

▶

Back

Close

Full Screen / Esc

Printer-friendly Version

Interactive Discussion



- Jefferson, A., Nolin, A., Lewis, S., and Tague, C.: Hydrogeologic controls on streamflow sensitivity to climate variation, *Hydrol. Process.*, 22, 4371–4385, doi:10.1002/hyp.7041, 2008.
- Johnson, T. E. and Weaver, C. P.: A framework for assessing climate change impacts on water and watershed systems, *Environ. Manage.*, 43, 118–134, 2009.
- 5 Johnson, T. E., Butcher, J. B., Parker, A., and Weaver, C. P.: Investigating the sensitivity of US streamflow and water quality to climate change: US EPA Global Change Research Program's 20 Watersheds Project, *J. Water Res. Pl.-ASCE*, 138, 453–464, doi:10.1061/(asce)wr.1943-5452.0000175, 2012.
- Jones, J. A. and Perkins, R. M.: Extreme flood sensitivity to snow and forest harvest, western Cascades, Oregon, United States, *Water Resour. Res.*, 46, W12512, doi:10.1029/2009WR008632, 2010.
- 10 Karl, T. R., Melillo, J. M., and Peterson, T. C.: *Global climate change impacts in the United States*, Cambridge University Press, 2009.
- Kharin, V. V., Zwiers, F. W., Zhang, X., and Wehner, M.: Changes in temperature and precipitation extremes in the CMIP5 ensemble, *Climatic Change*, 119, 345–357, doi:10.1007/s10584-013-0705-8, 2013.
- 15 Kundzewicz, Z. W., Mata, L. J., Arnell, N. W., Doll, P., Kabat, P., Jimenez, B., Miller, K., Oki, T., Zekai, S., and Shiklomanov, I.: *Freshwater Resources and their Management*, Cambridge University Press, Cambridge, UK, 173–210, 2007.
- 20 Leibowitz, S. G., Wigington Jr., P. J., Comeleo, R. L., and Ebersole, J. L.: A temperature–precipitation-based model of thirty-year mean snowpack accumulation and melt in Oregon, USA, *Hydrol. Process.*, 26, 741–759, doi:10.1002/hyp.8176, 2012.
- Li, H. W., Lamberti, G. A., Pearsons, T. N., Tait, C. K., Li, J. L., and Buckhouse, J. C.: Cumulative effects of riparian disturbances along high desert trout streams of the John Day Basin, Oregon, *T. Am. Fish. Soc.*, 123, 627–640, 1994.
- 25 Loy, W. G., Allan, S., Buckley, A. R., and Meacham, J. E.: *Atlas of Oregon*, 2nd Edn., University of Oregon Press, Eugene, Oregon, 301 pp., 2001.
- Luce, C. H. and Holden, Z. A.: Declining annual streamflow distributions in the Pacific Northwest United States, 1948–2006, *Geophys. Res. Lett.*, 36, L16401, doi:10.1029/2009gl039407, 30 2009.

## Hydrologic landscapes assess vulnerability

S. G. Leibowitz et al.

Title Page

Abstract

Introduction

Conclusions

References

Tables

Figures

◀

▶

◀

▶

Back

Close

Full Screen / Esc

Printer-friendly Version

Interactive Discussion



Mantua, N., Tohver, I., and Hamlet, A.: Climate change impacts on streamflow extremes and summertime stream temperature and their possible consequences for freshwater salmon habitat in Washington State, *Climatic Change*, 102, 187–223, doi:10.1007/s10584-010-9845-2, 2010.

5 Maurer, E. P., Brekke, L., Pruitt, T., and Duffy, P. B.: Fine-resolution climate projections enhance regional climate change impact studies, *EOS Trans. AGU*, 88, 504–504, 2007.

McClure, M. M., Alexander, M. A., Borggaard, D., Boughton, D., Crozier, L., Griffis, R., Jorgensen, J. C., Lindley, S. T., Nye, J., Rowland, J., Seney, E. E., Snover, A., Toole, C., and Van Houtan, K.: Incorporating climate science in applications of the US Endangered Species Act for aquatic species, *Conserv. Biol.*, 27, 1222–1233, doi:10.1111/cobi.12166, 2013.

10 McCullough, D. A., Bartholow, J. M., Jager, H. I., Beschta, R. L., Cheslak, E. F., Deas, M. L., Ebersole, J. L., Foott, J. S., Johnson, S. L., Marine, K. R., Mesa, M. G., Petersen, J. H., Souchon, Y., Tiffan, K. F., and Wurtsbaugh, W. A.: Research in thermal biology: burning questions for coldwater stream fishes, *Rev. Fish. Sci.*, 17, 90–115, 2009.

15 McMillan, J. R., Dunham, J. B., Reeves, G. H., Mills, J. S., and Jordan, C. E.: Individual condition and stream temperature influence early maturation of rainbow and steelhead trout, *Oncorhynchus mykiss*, *Environ. Biol. Fish.*, 93, 343–355, 2012.

Meehl, G. A., Covey, C., Delworth, T., Latif, M., McAvaney, B., Mitchell, J. F. B., Stouffer, R. J., and Taylor, K. E.: The WCRP CMIP3 multimodel dataset – a new era in climate change research, *B. Am. Meteorol. Soc.*, 88, 1383–1394, doi:10.1175/bams-88-9-1383, 2007.

20 Milly, P. C. D., Betancourt, J., Falkenmark, M., Hirsch, R. M., Kundzewicz, Z. W., Lettenmaier, D. P., and Stouffer, R. J.: Stationarity is dead: whither water management?, *Science*, 319, 573–574, doi:10.1126/science.1151915, 2008.

Mote, P. W. and Salathé, E.: Future climate in the Pacific Northwest, *Climatic Change*, 102, 29–50, doi:10.1007/s10584-010-9848-z, 2010.

25 Mote, P. W., Hamlet, A. F., Clark, M. P., and Lettenmaier, D. P.: Declining Mountain Snowpack in Western North America, *B. Am. Meteorol. Soc.*, 86, 39–49, 2005.

Nakićenović, N., Alcamo, J., Davis, G., de Vries, B., Fenhann, J., Gaffin, S., Gregory, K., Grübler, A., Jung, T. Y., Kram, T., La Rovere, E. L., Michaelis, L., Mori, S., Morita, T., Pepper, W., Pitcher, H., Price, L., Riahi, K., Roehrl, A., Rogner, H.-H., Sankovski, A., Schlesinger, M., Shukla, P., Smith, S., Swart, R., van Rooijen, S., Victor, N., and Dadi, Z.: Special Report on Emissions Scenarios: a Special Report of Working Group III of the

## Hydrologic landscapes assess vulnerability

S. G. Leibowitz et al.

Title Page

Abstract

Introduction

Conclusions

References

Tables

Figures

◀

▶

◀

▶

Back

Close

Full Screen / Esc

Printer-friendly Version

Interactive Discussion



Intergovernmental Panel on Climate Change, Cambridge, 599 pp., available at: <http://www.grida.no/climate/ipcc/emission/index.htm> (last access: 4 March 2014), 2000.

NMFJDLAC: North and Middle Forks John Day River Agricultural Water Quality Management Area Plan, North and Middle Forks John Day River Local Advisory Committee, with assistance from Oregon Department of Agriculture and Monument Soil and Water Conservation District, 39 pp., available at: [http://www.oregon.gov/ODA/NRD/docs/pdf/plans/john\\_day\\_nmf\\_2011\\_plan.pdf](http://www.oregon.gov/ODA/NRD/docs/pdf/plans/john_day_nmf_2011_plan.pdf) (last access: 4 March 2014), 2011.

Nolin, A. W.: Perspectives on climate change, mountain hydrology, and water resources in the Oregon Cascades, USA, Mt. Res. Dev., 32, S35–S46, doi:10.1659/mrd-journal-d-11-00038.s1, 2012.

Nolin, A. W. and Daly, C.: Mapping “at risk” snow in the Pacific Northwest, J. Hydrometeorol., 7, 1164–1171, doi:10.1175/jhm543.1, 2006.

Quinn, T. P.: The Behavior and Ecology of Pacific Salmon and Trout, University of Washington Press, Seattle, WA, 378 pp., 2005.

Ruesch, A. S., Torgersen, C. E., Lawler, J. J., Olden, J. D., Peterson, E. E., Volk, C. J., and Lawrence, D. J.: Projected climate-induced habitat loss for salmonids in the John Day River network, Oregon, USA, Conserv. Biol., 26, 873–882, 2012.

Ruffner, J. A.: Climates of the states: National Oceanic and Atmospheric Administration narrative summaries, tables, and maps for each state, with overview of state climatologist programs, Gale Research Co., Detroit, Mich., 1985.

Safeeq, M., Grant, G. E., Lewis, S. L., and Tague, C. L.: Coupling snowpack and groundwater dynamics to interpret historical streamflow trends in the western United States, Hydrol. Process., 27, 655–668, doi:10.1002/hyp.9628, 2013.

Sawicz, K., Wagener, T., Sivapalan, M., Troch, P. A., and Carrillo, G.: Catchment classification: empirical analysis of hydrologic similarity based on catchment function in the eastern USA, Hydrol. Earth Syst. Sci., 15, 2895–2911, doi:10.5194/hess-15-2895-2011, 2011.

Service, R. F.: As the west goes dry, Science, 303, 1124–1127, 2004.

Sheffield, J., Barrett, A. P., Colle, B., Fernando, D. N., Fu, R., Geil, K. L., Hu, Q., Kinter, J., Kumar, S., Langenbrunner, B., Lombardo, K., Long, L. N., Maloney, E., Mariotti, A., Meyerson, J. E., Mo, K. C., Neelin, J. D., Nigam, S., Pan, Z., Ren, T., Ruiz-Barradas, A., Serra, Y. L., Seth, A., Thibeault, J. M., Stroeve, J. C., Yang, Z., and Yin, L.: North American climate in CMIP5 experiments, Part I: Evaluation of historical simulations of continental and regional climatology, J. Climate, 26, 9209–9245, 2013a.

# HESSD

11, 2875–2931, 2014

## Hydrologic landscapes assess vulnerability

S. G. Leibowitz et al.

Title Page

Abstract

Introduction

Conclusions

References

Tables

Figures

◀

▶

◀

▶

Back

Close

Full Screen / Esc

Printer-friendly Version

Interactive Discussion

- Sheffield, J., Camargo, S. J., Fu, R., Hu, Q., Jiang, X., Johnson, N., Karnauskas, K. B., Kim, S. T., Kinter, J., Kumar, S., Langenbrunner, B., Maloney, E., Mariotti, A., Meyerson, J. E., Neelin, J. D., Nigam, S., Pan, Z., Ruiz-Barradas, A., Seager, R., Serra, Y. L., Sun, D.-Z., Wang, C., Xie, S.-P., Yu, J.-Y., Zhang, T., and Zhao, M.: North American climate in CMIP5 experiments, Part II: Evaluation of historical simulations of intra-seasonal to decadal variability, *J. Climate*, 26, 9247–9290, 2013b.
- Sivapalan, M., Takeuchi, K., Franks, S. W., Gupta, V. K., Karambiri, H., Lakshmi, V., Liang, X., McDonnell, J. J., Mendiondo, E. M., O’Connell, P. E., Oki, T., Pomeroy, J. W., Schertzer, D., Uhlenbrook, S., and Zehe, E.: IAHS Decade on Predictions in Ungauged Basins (PUB), 2003–2012: shaping an exciting future for the hydrological sciences, *Hydrolog. Sci. J.*, 48, 857–880, doi:10.1623/hysj.48.6.857.51421, 2003.
- Sproles, E. A., Nolin, A. W., Rittger, K., and Painter, T. H.: Climate change impacts on maritime mountain snowpack in the Oregon Cascades, *Hydrol. Earth Syst. Sci.*, 17, 2581–2597, doi:10.5194/hess-17-2581-2013, 2013.
- Stewart, I. T.: Changes in snowpack and snowmelt runoff for key mountain regions, *Hydrol. Process.*, 23, 78–94, doi:10.1002/hyp.7128, 2009.
- Stewart, I. T., Cayan, D. R., and Dettinger, M. D.: Changes in snowmelt runoff timing in Western North America under a “Business as Usual” climate change scenario, *Climatic Change*, 62, 217–232, 2004.
- Stewart, I. T., Cayan, D. R., and Dettinger, M. D.: Changes toward earlier streamflow timing across western North America, *J. Climate*, 18, 1136–1155, 2005.
- Stout, H., Lawson, P., Bottom, D., Cooney, T., Ford, M., Jordan, C., Kope, R., Kruzic, L., Pess, G., and Reeves, G.: Scientific conclusions of the status review for Oregon Coast coho salmon (*Oncorhynchus kisutch*), NOAA Technical Memorandum NMFS-NWFSC-118, US Department of Commerce, Seattle, Washington, 242 pp., 2012.
- Surfleet, C. G. and Tullos, D.: Variability in effect of climate change on rain-on-snow peak flow events in a temperate climate, *J. Hydrol.*, 479, 24–34, doi:10.1016/j.jhydrol.2012.11.021, 2013.
- Surfleet, C. G., Tullos, D., Chang, H., and Jung, I.-W.: Selection of hydrologic modeling approaches for climate change assessment; a comparison of model scale and structures, *J. Hydrol.*, 464–465, 233–248, doi:10.1016/j.jhydrol.2012.07.012, 2012.



## Hydrologic landscapes assess vulnerability

S. G. Leibowitz et al.

Title Page

Abstract

Introduction

Conclusions

References

Tables

Figures

◀

▶

◀

▶

Back

Close

Full Screen / Esc

Printer-friendly Version

Interactive Discussion



Tague, C. and Grant, G. E.: A geological framework for interpreting the low-flow regimes of Cascade streams, Willamette River Basin, Oregon, *Water Resour. Res.*, 40, W04303, doi:10.1029/2003wr002629, 2004.

Tague, C. and Grant, G. E.: Groundwater dynamics mediate low-flow response to global warming in snow-dominated alpine regions, *Water Resour. Res.*, 45, W07421, doi:10.1029/2008wr007179, 2009.

Tague, C., Grant, G., Farrell, M., Choate, J., and Jefferson, A.: Deep groundwater mediates streamflow response to climate warming in the Oregon Cascades, *Climatic Change*, 86, 189–210, doi:10.1002/hyp.8067, 2008.

Taylor, G. H. and Hannan, C.: *The Climate of Oregon: from Rain Forest to Desert*, Oregon State University Press, Corvallis, 1999.

Thorntwaite, C. W.: An approach toward a rational classification of climate, *Geogr. Rev.*, 38, 55–94, 1948.

Torgersen, C. E., Price, D. M., Li, H. W., and McIntosh, B. A.: Multiscale thermal refugia and stream habitat associations of chinook salmon in northeastern Oregon, *Ecol. Appl.*, 9, 301–319, 1999.

Tschaplinski, P. J. and Hartman, G. F.: Winter distribution of juvenile coho salmon (*Oncorhynchus kisutch*) before and after logging in Carnation Creek, British Columbia, and some implications for overwinter survival, *Can. J. Fish. Aquat. Sci.*, 40, 452–461, 1983.

US EPA: *Watershed Modeling to Assess the Sensitivity of Streamflow, Nutrient, and Sediment Loads to Potential Climate Change and Urban Development in 20 US Watersheds*, US Environmental Protection Agency, Washington, D.C., 2013.

Wigington Jr., P. J., Leibowitz, S. G., Comeleo, R. L., and Ebersole, J. L.: Oregon hydrologic landscapes: a classification framework, *J. Am. Water Resour. As.*, 49, 163–182, doi:10.1111/jawr.12009, 2013.



# HESSD

11, 2875–2931, 2014

## Hydrologic landscapes assess vulnerability

S. G. Leibowitz et al.

**Table 1.** Attributes of the Siletz, Sandy, and Middle Fork John Day case study basins. Drainage area and  $Q/S^*$  values from Wigington et al. (2013).

Stream	USGS Site No.	Drainage Area (km <sup>2</sup> )	$Q/S^*$	Mean Elevation (m)	Relief (m)
Siletz	14305500	523	1.07	400	1051
Sandy	14137000	681	0.96	1005	3161
Middle Fork John Day	14044000	1334	0.78	1455	1695

[Title Page](#)[Abstract](#)[Introduction](#)[Conclusions](#)[References](#)[Tables](#)[Figures](#)[|◀](#)[▶|](#)[◀](#)[▶](#)[Back](#)[Close](#)[Full Screen / Esc](#)[Printer-friendly Version](#)[Interactive Discussion](#)

## Hydrologic landscapes assess vulnerability

S. G. Leibowitz et al.

**Table 2.** Proportion of assessment units that changed from initial climate or seasonality class by realization. Climate classes: V = very wet, W = wet, M = moderate, D = dry, S = semi-arid, A = arid. Seasonality classes: w = fall or winter, s = spring, u = summer.

	ECHAM_A2	ECHAM_A1b	ECHAM_B1	PCM_A2	PCM_A1b	PCM_B1	MEAN	
Climate	V	0.175	0.236	0.140	0.219	0.281	0.00	0.175
	W	0.094	0.148	0.047	0.136	0.208	0.028	0.110
	M	0.161	0.182	0.060	0.213	0.324	0.070	0.168
	D	0.123	0.138	0.037	0.160	0.277	0.085	0.137
	S	0.018	0.017	0.005	0.023	0.042	0.057	0.027
	A	0.00	0.00	0.049	0.00	0.00	0.222	0.045
	ALL	0.090	0.113	0.044	0.119	0.183	0.053	0.100
Seasonality	w	0.00	0.00	0.00	0.00	0.00	0.00	0.000
	s	0.673	0.684	0.619	0.568	0.643	0.197	0.564
	u	1.00	1.00	1.00	1.00	1.00	0.429	0.905
	ALL	0.087	0.089	0.080	0.074	0.083	0.026	0.073

[Title Page](#)
[Abstract](#)
[Introduction](#)
[Conclusions](#)
[References](#)
[Tables](#)
[Figures](#)
[⏪](#)
[⏩](#)
[◀](#)
[▶](#)
[Back](#)
[Close](#)
[Full Screen / Esc](#)
[Printer-friendly Version](#)
[Interactive Discussion](#)


**Table 3.** Confusion matrices for initial (1971–2000) vs. projected (2041–2070) climate class by realization. Entries are numbers of assessment units. Parenthetical number is the proportion of the initial climate class represented in the projected climate class (cell value divided by row total; values sum to one by row). Diagonal entries shown in bold. Entries to the right of the diagonal represent changes to drier conditions, while entries to the left represent wetter conditions. Climate classes: V = very wet, W = wet, M = moderate, D = dry, S = semi-arid, A = arid.

		Projected (2041–2070) – ECHAM_A2						TOTAL
		V	W	M	D	S	A	
Initial (1971–2000)	V	<b>594</b> ( <b>0.825</b> )	126 (0.175)	0 (0)	0 (0)	0 (0)	0 (0)	720
	W	0 (0)	<b>1036</b> ( <b>0.906</b> )	107 (0.0936)	0 (0)	0 (0)	0 (0)	1143
	M	0 (0)	0 (0)	<b>591</b> ( <b>0.839</b> )	113 (0.161)	0 (0)	0 (0)	704
	D	0 (0)	0 (0)	0 (0)	<b>904</b> ( <b>0.877</b> )	127 (0.123)	0 (0)	1031
	S	0 (0)	0 (0)	0 (0)	0 (0)	<b>1946</b> ( <b>0.982</b> )	35 (0.0177)	1981
	A	0 (0)	0 (0)	0 (0)	0 (0)	0 (0)	<b>81</b> ( <b>1</b> )	81
	TOTAL	594	1162	698	1017	2073	116	5660
		Projected (2041–2070) – ECHAM_A1b						TOTAL
		V	W	M	D	S	A	
Initial (1971–2000)	V	<b>550</b> ( <b>0.764</b> )	170 (0.236)	0 (0)	0 (0)	0 (0)	0 (0)	720
	W	0 (0)	<b>974</b> ( <b>0.852</b> )	169 (0.148)	0 (0)	0 (0)	0 (0)	1143
	M	0 (0)	0 (0)	<b>576</b> ( <b>0.818</b> )	128 (0.182)	0 (0)	0 (0)	704
	D	0 (0)	0 (0)	0 (0)	<b>889</b> ( <b>0.862</b> )	142 (0.138)	0 (0)	1031
	S	0 (0)	0 (0)	0 (0)	0 (0)	<b>1948</b> ( <b>0.983</b> )	33 (0.0167)	1981
	A	0 (0)	0 (0)	0 (0)	0 (0)	0 (0)	<b>81</b> ( <b>1</b> )	81
	TOTAL	550	1144	745	1017	2090	114	5660

Title Page

Abstract

Introduction

Conclusions

References

Tables

Figures

◀

▶

◀

▶

Back

Close

Full Screen / Esc

Printer-friendly Version

Interactive Discussion



Table 3. Continued.

		Projected (2041–2070) – ECHAM_B1						
		V	W	M	D	S	A	TOTAL
Initial (1971–2000)	V	<b>619</b> <b>(0.86)</b>	101 (0.14)	0 (0)	0 (0)	0 (0)	0 (0)	720
	W	0 (0)	<b>1089</b> <b>(0.953)</b>	54 (0.0472)	0 (0)	0 (0)	0 (0)	1143
	M	0 (0)	0 (0)	<b>662</b> <b>(0.94)</b>	42 (0.0597)	0 (0)	0 (0)	704
	D	0 (0)	0 (0)	2 (0.00194)	<b>993</b> <b>(0.963)</b>	36 (0.0349)	0 (0)	1031
	S	0 (0)	0 (0)	0 (0)	3 (0.00151)	<b>1971</b> <b>(0.995)</b>	7 (0.00353)	1981
	A	0 (0)	0 (0)	0 (0)	0 (0)	4 (0.0494)	<b>77</b> <b>(0.951)</b>	81
	TOTAL	619	1190	718	1038	2011	84	5660
		Projected (2041–2070) – PCM_A2						
		V	W	M	D	S	A	TOTAL
Initial (1971–2000)	V	<b>562</b> <b>(0.781)</b>	158 (0.219)	0 (0)	0 (0)	0 (0)	0 (0)	720
	W	0 (0)	<b>988</b> <b>(0.864)</b>	155 (0.136)	0 (0)	0 (0)	0 (0)	1143
	M	0 (0)	0 (0)	<b>554</b> <b>(0.787)</b>	150 (0.213)	0 (0)	0 (0)	704
	D	0 (0)	0 (0)	0 (0)	<b>866</b> <b>(0.84)</b>	165 (0.16)	0 (0)	1031
	S	0 (0)	0 (0)	0 (0)	0 (0)	<b>1935</b> <b>(0.977)</b>	46 (0.0232)	1981
	A	0 (0)	0 (0)	0 (0)	0 (0)	0 (0)	<b>81</b> <b>(1)</b>	81
	TOTAL	562	1146	709	1016	2100	127	5660

[Title Page](#)

[Abstract](#)   [Introduction](#)

[Conclusions](#)   [References](#)

[Tables](#)   [Figures](#)

[⏪](#)   [⏩](#)

[◀](#)   [▶](#)

[Back](#)   [Close](#)

[Full Screen / Esc](#)

[Printer-friendly Version](#)

[Interactive Discussion](#)



Table 3. Continued.

		Projected (2041–2070) – PCM_A1b						
		V	W	M	D	S	A	TOTAL
Initial (1971–2000)	V	<b>518</b> <b>(0.719)</b>	202 (0.281)	0 (0)	0 (0)	0 (0)	0 (0)	720
	W	0 (0)	<b>905</b> <b>(0.792)</b>	238 (0.208)	0 (0)	0 (0)	0 (0)	1143
	M	0 (0)	0 (0)	<b>476</b> <b>(0.676)</b>	228 (0.324)	0 (0)	0 (0)	704
	D	0 (0)	0 (0)	0 (0)	<b>745</b> <b>(0.723)</b>	286 (0.277)	0 (0)	1031
	S	0 (0)	0 (0)	0 (0)	0 (0)	<b>1897</b> <b>(0.958)</b>	84 (0.0424)	1981
	A	0 (0)	0 (0)	0 (0)	0 (0)	0 (0)	<b>81</b> <b>(1)</b>	81
	TOTAL	518	1107	714	973	2183	165	5660
		Projected (2041–2070) – PCM_B1						
		V	W	M	D	S	A	TOTAL
Initial (1971–2000)	V	<b>720</b> <b>(1)</b>	0 (0)	0 (0)	0 (0)	0 (0)	0 (0)	720
	W	32 (0.028)	<b>1111</b> <b>(0.972)</b>	0 (0)	0 (0)	0 (0)	0 (0)	1143
	M	0 (0)	49 (0.0696)	<b>655</b> <b>(0.93)</b>	0 (0)	0 (0)	0 (0)	704
	D	0 (0)	0 (0)	88 (0.0854)	<b>943</b> <b>(0.915)</b>	0 (0)	0 (0)	1031
	S	0 (0)	0 (0)	0 (0)	113 (0.057)	<b>1868</b> <b>(0.943)</b>	0 (0)	1981
	A	0 (0)	0 (0)	0 (0)	0 (0)	18 (0.222)	<b>63</b> <b>(0.778)</b>	81
	TOTAL	752	1160	743	1056	1886	63	5660

[Title Page](#)

[Abstract](#) [Introduction](#)

[Conclusions](#) [References](#)

[Tables](#) [Figures](#)

[◀](#) [▶](#)

[◀](#) [▶](#)

[Back](#) [Close](#)

[Full Screen / Esc](#)

[Printer-friendly Version](#)

[Interactive Discussion](#)



**Table 4.** Confusion matrices for initial (1971–2000) vs. projected (2041–2070) seasonality class by realization. Entries are numbers of assessment units. Parenthetical number is the proportion of the initial seasonality class represented in the projected seasonality class (cell value divided by row total; values sum to one by row). Diagonal entries shown in bold. Seasonality classes: w = fall or winter, s = spring, u = summer.

		Projected (2041–2070) – ECHAM_A2			
		w	s	u	TOTAL
Initial (1971–2000)	w	<b>4931</b> <b>(1)</b>	0 (0)	0 (0)	4931
	s	486 (0.673)	<b>236</b> <b>(0.327)</b>	0 (0)	722
	u	0 (0)	7 (1)	<b>0</b> <b>(0)</b>	7
TOTAL		5417	243	0	5660

		Projected (2041–2070) – ECHAM_A1b			
		w	s	u	TOTAL
Initial (1971–2000)	w	<b>4931</b> <b>(1)</b>	0 (0)	0 (0)	4931
	s	494 (0.684)	<b>228</b> <b>(0.316)</b>	0 (0)	722
	u	0 (0)	7 (1)	<b>0</b> <b>(0)</b>	7
TOTAL		5425	235	0	5660

		Projected (2041–2070) – ECHAM_B1			
		w	s	u	TOTAL
Initial (1971–2000)	w	<b>4931</b> <b>(1)</b>	0 (0)	0 (0)	4931
	s	447 (0.619)	<b>275</b> <b>(0.381)</b>	0 (0)	722
	u	0 (0)	7 (1)	<b>0</b> <b>(0)</b>	7
TOTAL		5378	282	0	5660

## Hydrologic landscapes assess vulnerability

S. G. Leibowitz et al.

Title Page

Abstract

Introduction

Conclusions

References

Tables

Figures

◀

▶

◀

▶

Back

Close

Full Screen / Esc

Printer-friendly Version

Interactive Discussion



Table 4. Continued.

		Projected (2041–2070) – PCM_A2			
		w	s	u	TOTAL
Initial (1971–2000)	w	<b>4931</b> <b>(1)</b>	0 (0)	0 (0)	4931
	s	410 (0.568)	<b>312</b> <b>(0.432)</b>	0 (0)	722
	u	0 (0)	7 (1)	<b>0</b> <b>(0)</b>	7
TOTAL		5341	319	0	5660
		Projected (2041–2070) – PCM_A1b			
		w	s	u	TOTAL
Initial (1971–2000)	w	<b>4931</b> <b>(1)</b>	0 (0)	0 (0)	4931
	s	464 (0.643)	<b>258</b> <b>(0.357)</b>	0 (0)	722
	u	0 (0)	7 (1)	<b>0</b> <b>(0)</b>	7
TOTAL		5395	265	0	5660
		Projected (2041–2070) – PCM_B1			
		w	s	u	TOTAL
Initial (1971–2000)	w	<b>4930</b> <b>(1)</b>	1 (0.000203)	0 (0)	4931
	s	142 (0.197)	<b>580</b> <b>(0.803)</b>	0 (0)	722
	u	0 (0)	3 (0.429)	<b>4</b> <b>(0.571)</b>	7
TOTAL		5072	584	4	5660

Title Page

Abstract

Introduction

Conclusions

References

Tables

Figures

◀

▶

◀

▶

Back

Close

Full Screen / Esc

Printer-friendly Version

Interactive Discussion



**Table 5.** Hydrologic landscape (HL) composition (% area) of three case study basins for initial (1971–2000) conditions and projected (2041–2070) realizations. See key in Fig. S2 in the Supplement for HL class definitions.

HL Class	1971–2000	ECHAM_A2	ECHAM_A1b	ECHAM_B1	PCM_A2	PCM_A1b	PCM_B1
<b>Siletz River</b>							
VwLML	63.25	63.25	63.25	63.25	63.25	63.25	63.25
VwLMM	34.81	31.83	31.83	31.83	31.83	24.57	34.81
VwLTH	1.94	1.81	–	1.81	–	–	1.94
WwLMM	–	2.97	2.97	2.97	2.97	10.23	–
WwLTH	–	0.13	1.94	0.13	1.94	1.94	–
<b>Sandy River</b>							
VwHMM	3.99	73.77	73.77	48.18	48.18	73.77	17.73
VwLML	9.33	9.33	9.33	9.33	9.33	9.33	9.33
VwLMM	12.11	16.90	16.90	16.90	16.90	16.90	16.90
VsHMM	69.78	–	–	25.59	25.59	–	56.04
VsLMM	4.79	–	–	–	–	–	–
<b>Middle Fork John Day River</b>							
WsLML	4.42	2.22	2.22	2.22	–	–	2.22
WsLMM	–	–	–	–	–	–	2.28
WsMML	2.16	–	–	3.48	–	–	3.48
WsMMM	3.39	–	–	3.37	–	–	3.37
MwLMM	0.28	15.90	15.90	24.36	11.38	8.25	16.11
MwMMM	8.25	15.08	15.08	10.12	5.58	15.08	4.54
MwMTM	–	0.28	0.25	0.28	0.25	–	–
MsLML	–	–	–	–	2.22	2.22	–
MsLMM	4.53	5.74	5.74	5.74	5.74	5.74	11.71
MsMML	–	3.48	3.48	–	3.48	3.48	–
MsMMM	21.10	12.51	12.51	18.64	22.01	12.51	24.22
MsMTM	23.62	–	–	–	–	–	0.28
SwMML	–	–	–	–	–	0.69	–
DwLMM	5.79	18.29	18.29	9.82	22.80	25.94	9.82
DwMML	9.58	17.32	17.32	17.32	17.32	16.64	17.32
DwMMM	16.89	9.18	9.18	4.64	9.18	9.18	4.64
DwMTM	–	–	0.03	–	0.03	0.28	–

Title Page

Abstract

Introduction

Conclusions

References

Tables

Figures

◀

▶

◀

▶

Back

Close

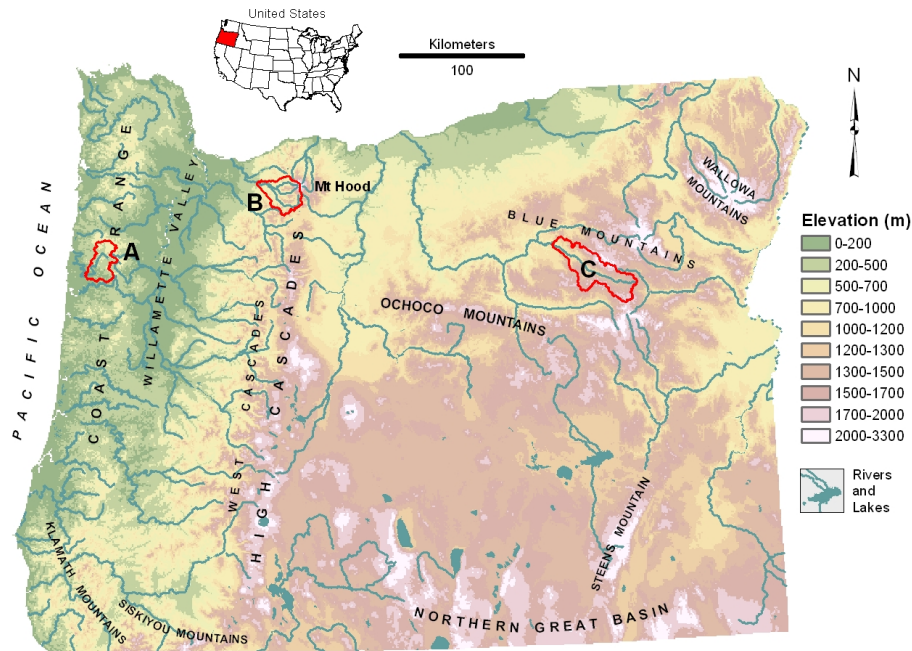
Full Screen / Esc

Printer-friendly Version

Interactive Discussion







**Fig. 1.** Elevation map of Oregon with major features and locations of three case study basins: **(A)** Siletz; **(B)** Sandy; **(C)** Middle Fork John Day.

Title Page

Abstract

Introduction

Conclusions

References

Tables

Figures

◀

▶

◀

▶

Back

Close

Full Screen / Esc

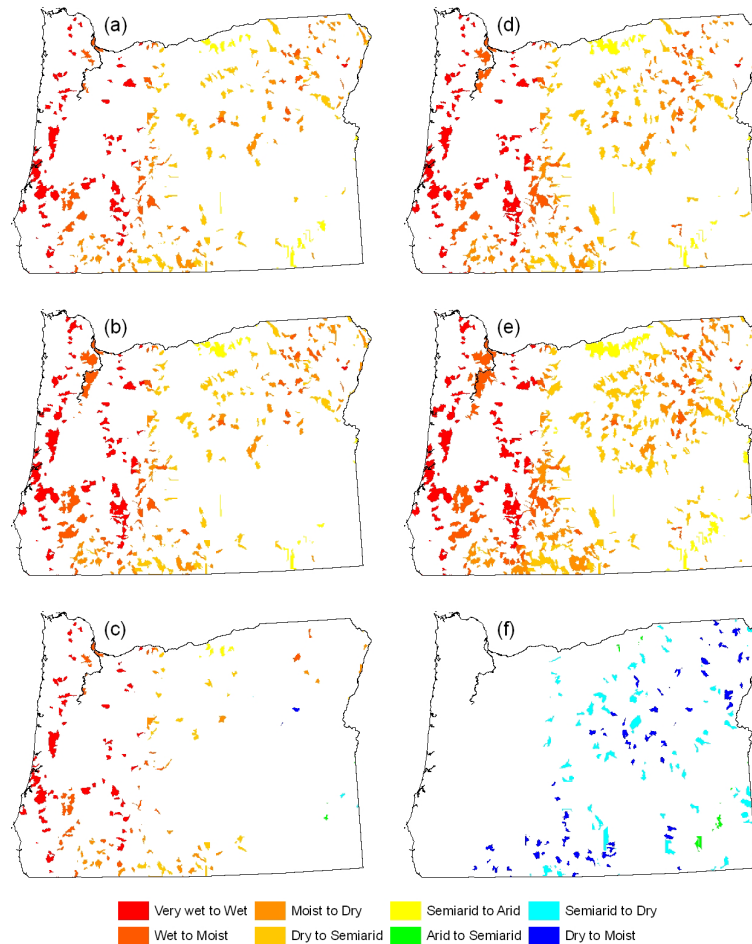
Printer-friendly Version

Interactive Discussion



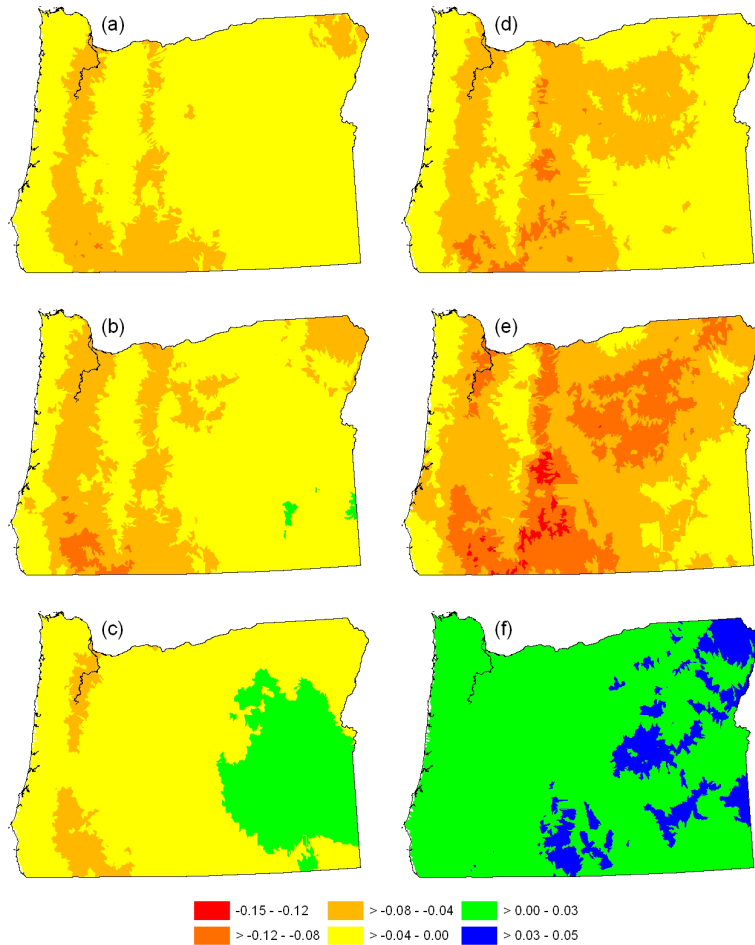
## Hydrologic landscapes assess vulnerability

S. G. Leibowitz et al.



**Fig. 2.** Change in climate class by realization: (a) ECHAM\_A2; (b) ECHAM\_A1b; (c) ECHAM\_B1; (d) PCM\_A2; (e) PCM\_A1b; (f) PCM\_B1.

[Title Page](#)
[Abstract](#)
[Introduction](#)
[Conclusions](#)
[References](#)
[Tables](#)
[Figures](#)
[◀](#)
[▶](#)
[◀](#)
[▶](#)
[Back](#)
[Close](#)
[Full Screen / Esc](#)
[Printer-friendly Version](#)
[Interactive Discussion](#)

**Fig. 3.** Change in Feddema Moisture Index (unitless) by realization: **(a)** ECHAM\_A2; **(b)** ECHAM\_A1b; **(c)** ECHAM\_B1; **(d)** PCM\_A2; **(e)** PCM\_A1b; **(f)** PCM\_B1.

Title Page

Abstract

Introduction

Conclusions

References

Tables

Figures

◀

▶

◀

▶

Back

Close

Full Screen / Esc

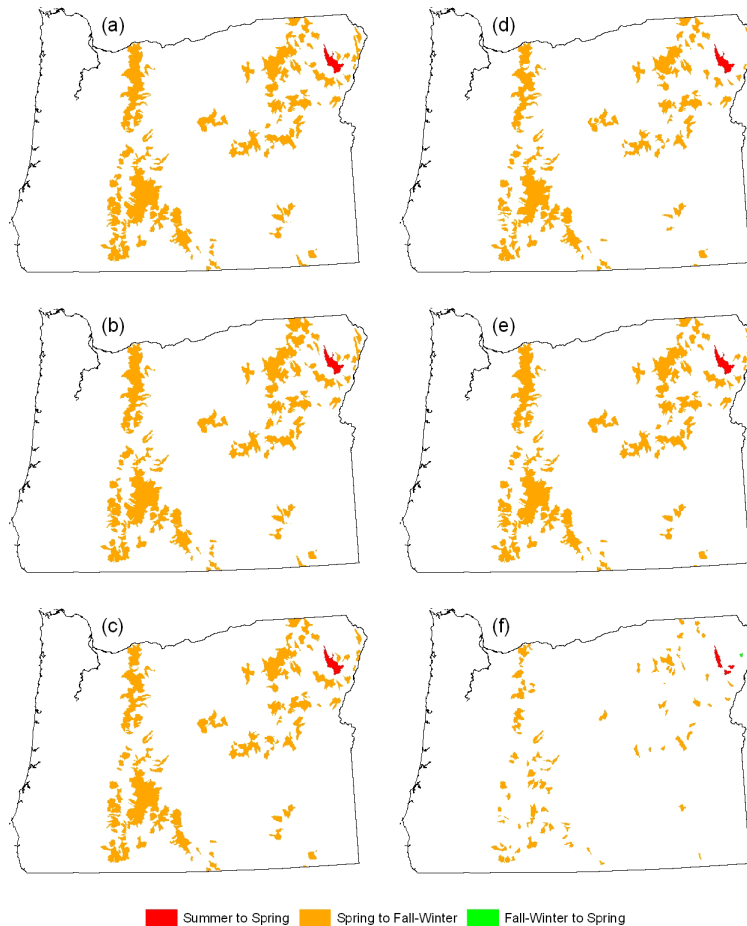
Printer-friendly Version

Interactive Discussion



Hydrologic  
landscapes assess  
vulnerability

S. G. Leibowitz et al.

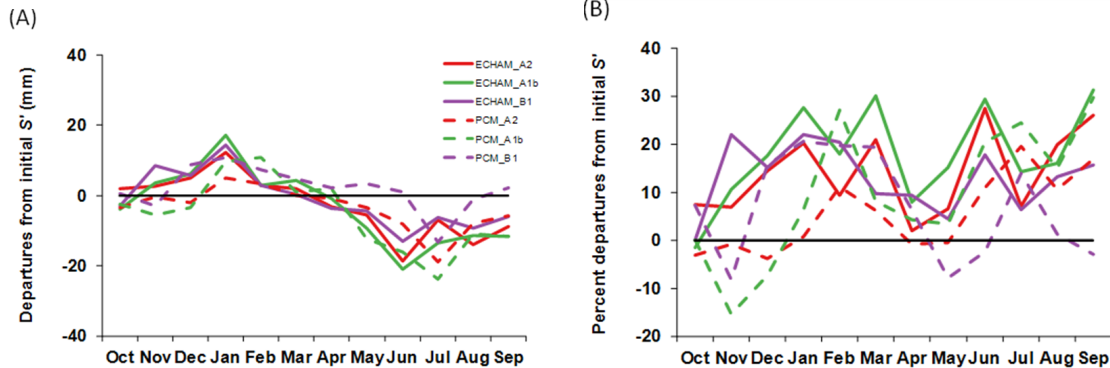


**Fig. 4.** Change in seasonality class by realization: **(a)** ECHAM\_A2; **(b)** ECHAM\_A1b; **(c)** ECHAM\_B1; **(d)** PCM\_A2; **(e)** PCM\_A1b; **(f)** PCM\_B1.

[Title Page](#)[Abstract](#)[Introduction](#)[Conclusions](#)[References](#)[Tables](#)[Figures](#)[|◀](#)[▶|](#)[◀](#)[▶](#)[Back](#)[Close](#)[Full Screen / Esc](#)[Printer-friendly Version](#)[Interactive Discussion](#)

## Hydrologic landscapes assess vulnerability

S. G. Leibowitz et al.



**Fig. 5.** Median 2041–2070 departures **(A)** and percent departures **(B)** from initial monthly modified surplus ( $S'$ ), by realization. Note: a total of six of the 5660 assessment units had an undefined percent departure for one month, due to divide by zeros. These values were set to zero when calculating the median percent departures.

Title Page

Abstract

Introduction

Conclusions

References

Tables

Figures

◀

▶

◀

▶

Back

Close

Full Screen / Esc

Printer-friendly Version

Interactive Discussion



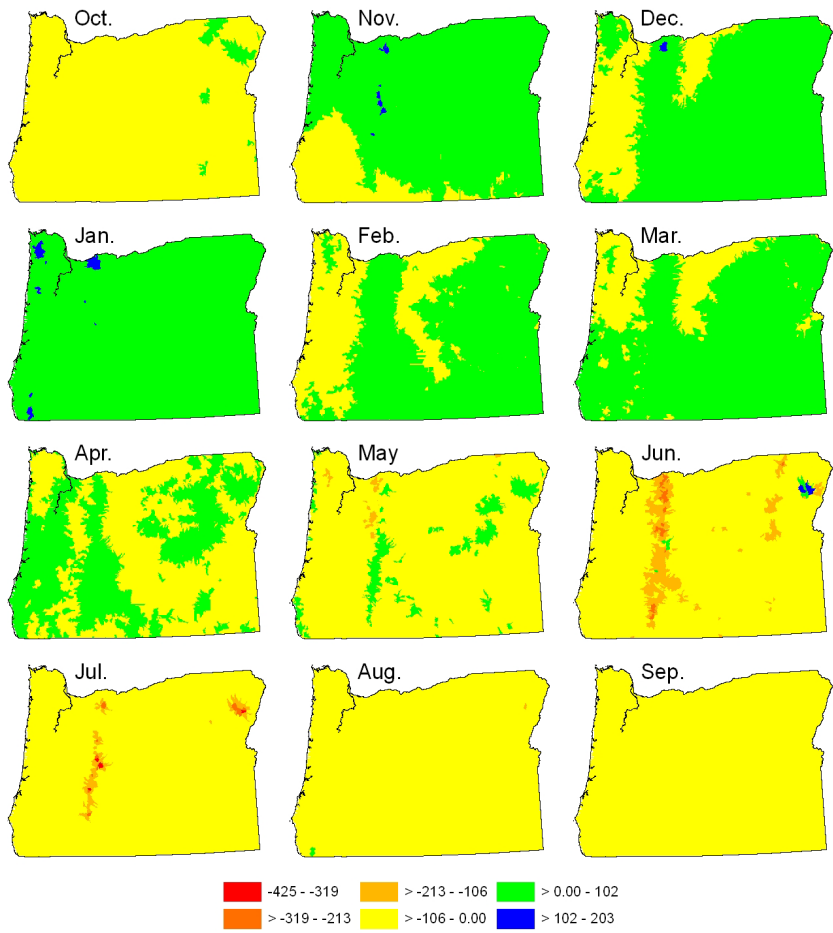


Fig. 6. Change in monthly modified surplus ( $\Delta S'$ , in mm) for the ECHAM\_A1b realization.

[Title Page](#)

[Abstract](#)    [Introduction](#)

[Conclusions](#)    [References](#)

[Tables](#)    [Figures](#)

[◀](#)    [▶](#)

[◀](#)    [▶](#)

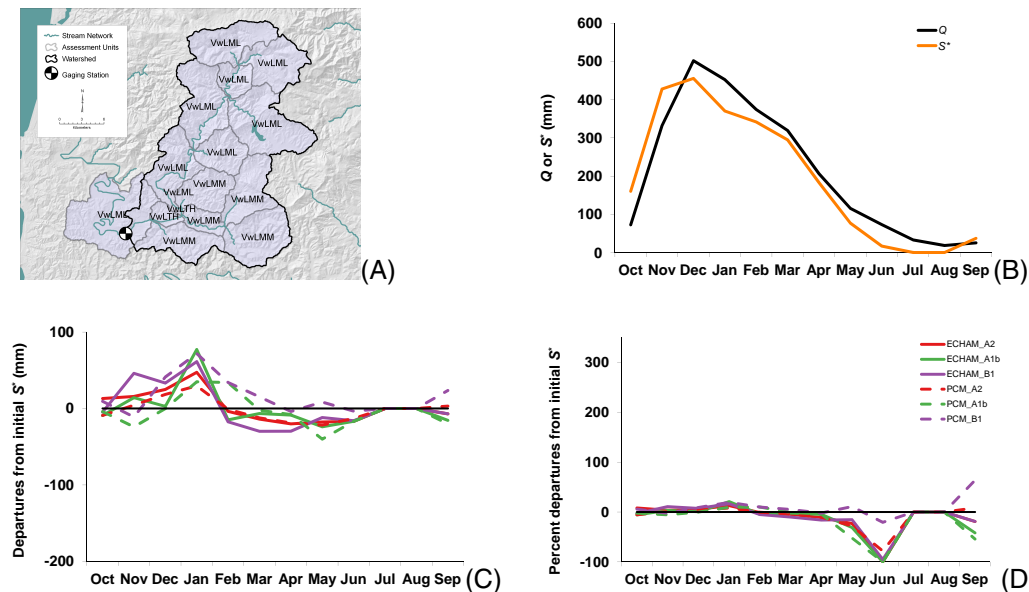
[Back](#)    [Close](#)

[Full Screen / Esc](#)

[Printer-friendly Version](#)

[Interactive Discussion](#)

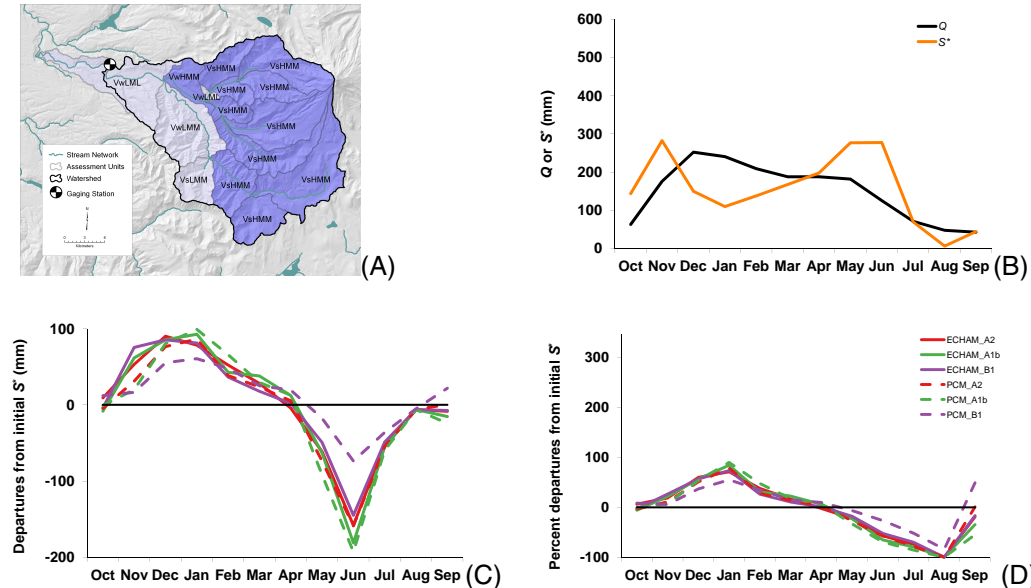




**Fig. 7.** Results for the Siletz River basin, Oregon. **(A)** Initial (1971–2000) HL distribution; **(B)** comparison of initial mean monthly discharge ( $Q$ , in mm) and watershed positive surplus ( $S^*$ , in mm); **(C)** 2041–2070 departures from initial monthly  $S^*$ , by realization; and **(D)** 2041–2070 % departures from initial monthly  $S^*$ , by realization (July and August values undefined due to divide by zeros).

## Hydrologic landscapes assess vulnerability

S. G. Leibowitz et al.



**Fig. 8.** Results for the Sandy River basin, Oregon. **(A)** Initial (1971–2000) HL distribution; **(B)** comparison of initial mean monthly discharge ( $Q$ , in mm) and watershed positive surplus ( $S^*$ , in mm); **(C)** 2041–2070 departures from initial monthly  $S^*$ , by realization; and **(D)** 2041–2070 % departures from initial monthly  $S^*$ , by realization.

[Title Page](#)

[Abstract](#)

[Introduction](#)

[Conclusions](#)

[References](#)

[Tables](#)

[Figures](#)

⏪

⏩

◀

▶

[Back](#)

[Close](#)

[Full Screen / Esc](#)

[Printer-friendly Version](#)

[Interactive Discussion](#)





