

Derivation and evaluation of landslide triggering thresholds by a Monte Carlo approach

Department of Civil Engineering and Architecture, Via S. Sofia, 64, 95123 – Catania, Italy
Correspondence to: D. J. Peres (djperes@dica.unict.it)

Abstract.

Assessment of landslide triggering rainfall thresholds is useful for early warning in prone areas.

In this paper, it is shown how rainfall stochastic models and hydrological and slope stability
5 physically-based models can be advantageously combined in a Monte Carlo simulation framework
to generate virtually unlimited-length synthetic rainfall and related slope-stability factor of safety
data, exploiting the information contained in observed rainfall records and field-measurements of
soil hydraulic and geotechnical parameters. The synthetic dataset, dichotomized in triggering and
non-triggering rainfall events, is analysed by Receiver Operating Characteristics analysis to derive
10 stochastic-input physically-based thresholds that optimize the trade-off between correct and wrong
predictions. Moreover, the specific modeling framework implemented in this work, based on hourly
analysis, enables to analyse the uncertainty related to variability of rainfall intensity within events
and to past rainfall (antecedent rainfall). A specific focus is dedicated to the widely-used power-law
rainfall Intensity-Duration (ID) thresholds.

15 Results indicate that variability of intensity during rainfall events influences significantly rain-
fall Intensity and Duration associated to landslide triggering. Remarkably, when a time-variable
rainfall-rate event is considered, the simulated triggering points may be separated with a very good
approximation from the non-triggering ones by a power-law ID equation, while a representation of
rainfall as constant-intensity hyetographs globally leads to non-conservative results. This indicates
20 that the ID power-law equation is adequate to represent the triggering part due to transient infiltra-
tion produced by rainfall events of variable intensity and thus gives a physically-based justification
for this widely-used threshold form, which results valid when landslide occurrence is mostly due to
that part. These conditions are more likely to occur in hillslopes of low specific upslope contributing
area, relatively high hydraulic conductivity and high critical wetness ratio. Otherwise, rainfall time-

history occurring before single rainfall events influences landslide triggering, determining whether a threshold based on rainfall Intensity and Duration only may be sufficient or it needs to be improved by the introduction of antecedent rainfall variables. Further analyses show that predictability of landslides decreases with soil depth, critical wetness ratio and the increase of vertical basal drainage (leakage) that occurs in the presence of a fractured bedrock.

1 Introduction

Rainfall thresholds indicating landslide triggering are useful for the development of early warning systems in prone areas (cf., e.g., Keefer et al., 1987; Fathani et al., 2009; Takara and Apip Bagiawan, 2009; Baum and Godt, 2010; Capparelli and Versace, 2011). Commonly, such thresholds are derived by the analysis of historical rainfall and landslide data, and identified by drawing a lower-bound envelope curve of the triggering event characteristics (e.g. Campbell, 1975; Caine, 1980; Cancelli and Nova, 1985; Cannon and Ellen, 1985; Aleotti, 2004; Wieczorek et al., 2000; Guzzetti et al., 2007) or by enhanced methods which consider curves associated with a given frequency of non-exceedance by triggering events (cf. Brunetti et al., 2010; Peruccacci et al., 2012). A review by Guzzetti et al. (2007) indicated the prevailing use in literature of so-called power-law ID thresholds, which are of the form $I = a_1 D^{a_2}$, where D is rain duration to triggering and I is rain intensity $I = W/D$, W being rainfall accumulated over duration D . The a_1 and a_2 parameters have been derived by different researchers, for specific sites, regions or the whole globe.

Many factors of uncertainty affect the reliability of empirical thresholds, such as rainfall temporal and spatial variability, uncertain knowledge of the triggering instants, simplicity of threshold equation that does not include all control variables and statistical issues as well (Peruccacci et al., 2012). Nonetheless, it can be argued that most of the uncertainty stems from the availability and quality of the data used to derive the thresholds (Glade et al., 2000; Berti et al., 2012).

In fact, adequate historical data on landslides and simultaneous rainfall are in most cases available for a relatively short period, which may not be sufficiently significant from a statistical point of view. Moreover, the identification of the triggering instant is in many cases significantly uncertain and landslide archives are seldom complete (i.e. all landslide events occurred in the historical period are not known). This has a direct consequence on threshold derivation, because critical (where "critical" here means "corresponding to landslide triggering") duration D , assumed as the time interval from rainfall event start and the triggering instant, cannot be computed accurately. Another key factor is the criterion used for rainfall identification, and in particular how the beginning of a rainfall event is identified. Many authors either do not specify the criteria used for rainfall identification or apply qualitative criterion, and indeed only few works in literature (Aleotti, 2004; Brunetti et al., 2010; Tiranti and Rabuffetti, 2010; Berti et al., 2012) explicitly addressed this problem. This makes thresholds subjective and impairs comparisons of results obtained by different researchers,

60 as in analysing the data the criterion may have been modified from one rainfall event to another. Another point is that in many countries automatic rain gauge networks have been installed only quite recently, and one has to rely on analysis based on rainfall records at the daily aggregation time scale (cf. Guzzetti et al., 2007, and references therein). Since many landslides, especially the most devastating shallow rapidly-moving ones, may be triggered by rainfall events of few hours (cf., e.g., 65 Highland and Bobrowsky, 2008), use of daily rainfall for threshold derivation in these cases is quite questionable.

Apart from data quality issues, it can be pointed out that use of characteristic variables for the representation of rainfall events, and in particular of their intensity and duration, introduces an intrinsic uncertainty factor, because these variables may not be adequate to represent all the rainfall 70 characteristics that affect landslide triggering. In fact, rainfall events represented by the same pair (D, I) may correspond to totally different event time-histories (hyetographs) that thus may or may not result in triggering. Sirangelo and Versace (1996) proposed an empirical method based on the use of convolution between rainfall time series and a filter function, which attempts to overcome this uncertainty. Also, use of the Duration–Intensity pair (D, I) in threshold formulation implies that 75 the effect of initial wetness on triggering rainfall is neglected. Regarding this issue, several authors have added to D and I antecedent rainfall as a control parameter, though the empirical analyses have not yet provided unequivocal indications on the role of antecedent rainfall and different researchers used diverse temporal horizons for the computation of antecedent cumulative rainfall (Guzzetti et al., 2007).

80 Another important point is that many thresholds have been derived by analysing triggering events only, thus neglecting the non-triggering ones. This may lead to an underestimation of the triggering conditions, i.e. to thresholds that implemented in a early warning system tend to produce an unacceptable degree of false alarms, causing populations to no longer rely on early warnings (so called *cry-wolf effect* (cf., e.g., Barnes et al., 2007)). In fact, thresholds always should be provided 85 with a measure of their reliability. To this end, Berti et al. (2012) proposed Bayesian probabilistic analysis to evaluate landslide triggering thresholds in the presence of uncertainty. ROC-analysis (cf., e.g., Wilks, 2011), based on the analysis of correct and wrong predictions may be advantageously applied as well (cf., e.g., Staley et al., 2013).

Alternatively to empirical models, physically-based models that couple hydrological and slope 90 stability analysis (Montgomery and Dietrich, 1994; Wu and Sidle, 1995; Iverson, 2000; Baum et al., 2002; D’Odorico et al., 2005; Rosso et al., 2006; Baum et al., 2008) have been proposed to assess landslide triggering by rainfall, with the advantage that they take explicitly into account the meteorological, hydrological and geo-mechanical processes and variables that determine landslide triggering. From such models physically-based thresholds may be derived (cf., e.g., Rosso et al., 2006; 95 Salciarini et al., 2008). Such thresholds generally deviate from a straight line in the $\log(D) - \log(I)$ plane, thus casting some doubts on the use of the power-law as a proper functional form for deriving

rainfall thresholds. In other words, because such thresholds were derived from a physically-based model, this may be interpreted as an evidence that the use of the power-law form is not supported by a physically-based standpoint. Nevertheless, in such studies the meteorological aspects were analysed in a simplistic way, because the thresholds do not consider variability of rainfall intensity during events and the initial conditions are not computed as a function of rainfall time-history preceding the current event.

In spite of the limitations that we have put into evidence above, ID rainfall thresholds are widely applied for landslide early warning systems. Perhaps their success is due to the fact that simple forms of the threshold are more easily understood by stakeholders and decision makers than the more complex, albeit more accurate, physically-based models.

In this paper a Monte-Carlo-based methodology to derive and evaluate rainfall landslide-triggering thresholds is proposed, which makes use of an existing body of stochastic and physically-based models. The approach combines research findings in the fields of rainfall and landslide hydrological modeling to provide an output that is easily implementable in a early warning system, i.e. a landslide triggering threshold, based on rainfall monitoring, of the same type that is commonly derived by direct empirical analysis of observed rainfall and landslide data. In particular, from the Monte Carlo simulations synthetic rainfall series are generated by a stochastic model and corresponding triggering/non-triggering conditions are identified by an hydrological and slope stability model. The generated dataset is then analysed to derive and evaluate ID thresholds that take into account the variability of both rainfall intensity within events and initial conditions determined by past rainfall, as well as triggering/non-triggering events to measure uncertainty by Receiver Operating Characteristics (ROC) analysis. Furthermore, the derived stochastic-input physically-based thresholds are compared with the constant intensity physically-based thresholds, which result from the simplistic assumption mentioned above (uniform hyetographs and prefixed initial conditions) in order to assess the effect on landslide triggering of rain intensity variability during events and variable initial conditions, computed as dependent by past rainfall time-history. This analysis is related to the one by D’Odorico et al. (2005), in which the effect of rain intensity variability within events is studied by considering beta-shaped hyetographs inputs to the model of Iverson (2000) for derivation of hillslope response. Nevertheless, in their work, the variability of initial conditions as dependent from antecedent rainfall has not been considered because the steady-state asymptotic solution of Montgomery and Dietrich (1994) is utilized for computation of initial conditions. From their study they conclude that beta-shaped non-uniform hyetographs have a stronger destabilizing effect than uniform hyetographs of the same volume, since associated return period of $FS \leq 1$ resulted higher in this last case. In this study we instead use hyetographs generated by a Neyman–Scott Rectangular Pulses (NSRP) stochastic model (Neyman and Scott, 1958; Kavvas and Delleur, 1975; Cox and Isham, 1980; Rodriguez-Iturbe et al., 1987a) and account for variability of initial conditions using a water table recession model to derive the initial water table height from the response to

rainfall events preceding the current one, based on a linear reservoir mass-conservation equation with similar assumptions adopted by Rosso et al. (2006). The transient response to rainfall events is computed by a model based on the TRIGRS program (Baum et al., 2008). An application of the proposed methodology is carried out to the highly landslide-prone area of the Peloritani Mountains, North-eastern Sicily, Italy. A sensitivity analysis on some of the most important control variables is carried out to analyse their effect on landslide triggering thresholds and the associated uncertainty.

2 Monte Carlo synthetic data generation

The Monte Carlo simulation procedure for synthetic rainfall-landslide data generation consists of the following steps:

1. A stochastic rainfall model, calibrated on observations at a selected site, is used to generate a 1000-years long (hourly) rainfall time series. In particular we use a Neyman-Scott Rectangular Pulses model (see Appendix A)
2. The synthetic rainfall time series is pre-processed in order to identify rainfall events and their inter-arrival durations. In particular, when two wet spells are separated by a dry time interval less than Δt_{\min} , these are considered to belong to the same rainfall event; otherwise two separate rainfall events are considered. Details on the choice of this simulation parameter are given at the end of this section
3. Some of the generated rainfall events are removed from the analysis because, according to the hydrological model they will produce no significant variation of pressure head distribution, being their instantaneous (hourly) intensity too low. In particular the events having maximum intensity less than i_{\min} are removed from the analysis. We assume i_{\min} equal to the leakage flux limit, given by $c_d K_S (1 - \cos^2 \delta)$, c_d being the vertical leakage ratio, K_S the saturated hydraulic conductivity and δ the slope of the hillslope (see Appendix B)
4. Application of previous steps leads to the generation of N_{RE} individual rainfall events
5. An initial value of the water table height is fixed to start simulations of the hydrological response for the whole rainfall time series. For the analysed case-study area and many similar cases, it may be assumed that at the beginning of each hydrological year the water table is at the basal boundary, because an almost totally-dry season comes before (this may be a slightly conservative assumption, since pressure head at the soil-bedrock interface may assume negative values after a long dry season). As this is valid also for the first year, simulation for first event is conducted considering the water table at the soil-bedrock interface
6. The response to the generated rainfall events is simulated by the models described in Appendix B and the following procedure to be applied for $i = 1, 2, \dots, N_{RE}$:

(a) Response in terms of pressure head ψ within rainfall events is computed using the TRIGRS model (Baum et al., 2008, 2010) (see Sect. B2). As pressure head rise may continue after the end of rainfall, the TRIGRS transient-response simulation-interval is prolonged
 $\Delta t_a = \Delta t_{min} - 1$ h after the ending-time $t_{end,i}$ of rainfall events

(b) The instant $t_{f,i} = \max(t_{end,i}, t_{max,i})$ is searched, t_{max} being the time instant at which maximum transient pressure head occurs. It follows that the final response to rainfall event i , in terms of water table height, is $\psi(d_{LZ}, t_{f,i})/\beta$, where $\beta = \cos^2 \delta$ (slope parallel flow is assumed), and d_{LZ} is the soil depth. Moreover, the time interval $\Delta t_{i+1} = t_{i+1}^{(in)} - t_{f,i}$ is computed, with $t_{i+1}^{(in)}$ the instant at which rainfall event $i + 1$ begins

(c) The water table height at the beginning of rainfall event $i + 1$ is computed by a sub-horizontal drainage model (see Sect. B1) which uses $\psi(d_{LZ}, t_{f,i})/\beta$ and Δt_{i+1}

7. The result is a series of maximum pressure head, or minimum factor of safety FS responses (computed by infinite-slope stability analysis, see sect. B3), corresponding to the N_{RE} rainfall events. The rainfall and the FS series are together analysed to derive and evaluate landslide triggering thresholds via a ROC-based approach (see Sect. 3).

Regarding the choice of the inter-event time Δt_{min} – an issue that is the focus of some works in literature (e.g. Restrepo-Posada and Eagleson, 1982; Bonta and Rao, 1988) – we have followed an approach analogous to that used by Balistocchi et al. (2009) and Balistocchi and Bacchi (2011), for which the inter-event time may be assumed as the minimum time needed to avoid overlapping of the response produced by two subsequent rainfall events. To this end we considered that the temporal peak of pressure head due to an individual rainfall event may be reached, as mentioned above, at an instant significantly after rainfall ceases. Hence a criterion for selecting the inter-event time has been that of choosing a value that approximates the dry time interval that contains the peak pressure head response relatively to all the N_{RE} simulated rainfall-events. In our case, from preliminary simulations a $\Delta t_{min} = 24$ h appeared suitable for the hydraulic and geotechnical soil properties which are considered in this work (see Sect. 3).

Figure 1 summarizes the main steps of the described Monte Carlo methodology.

3 Threshold derivation and evaluation

3.1 Triggering and non-triggering rainfall identification

For a hillslope of given properties, Monte Carlo simulations lead to a series of time instants at which the factor of safety drops below the value of 1 (a FS =1 *down-crossing*).

A triggering rainfall may be associated to each down-crossing, though it is noteworthy to point out that some uncertainty is present in the link between the actual failure of the slope and its theoretical instability. Nevertheless, following several works in literature (e.g., Iverson, 2000; Rosso et al.,

2006; Baum et al., 2010) this uncertainty has been not taken into account here, though it may affect at a certain degree the way that rainfall events are classified as triggering and non-triggering and the subsequent ROC-based analysis (Sect. 3.2).

We investigate thresholds that are based on rainfall intensity I and duration D . Various procedures have been used to identify and compute I and D , as discussed in the introduction-section of this paper and by Berti et al. (2012). From a general standpoint, this procedure may be disconnected from the way event separation has been performed to compute the triggering instants with the methods described in Sect. 2. Nevertheless, for consistency with the event separation criterion that is considered in the Monte Carlo simulation methodology, it is preferable that the procedure for identification of triggering and non-triggering events is based on the same inter-event time Δt_{min} used in Monte Carlo simulations. Hence we adopt the following procedure. First, rainfall events are separated when their dry inter-arrival is longer than Δt_{min} . Rainfall events then have a total duration D_{tot} and mean intensity $I_{tot} = W_{tot}/D_{tot}$, where W_{tot} is the total event cumulative rainfall. For a triggering event, triggering may occur before or after the end of the rainfall event. In the first case, the critical duration D_{CR} is the time interval that starts at the beginning of the rainfall event and finishes at the triggering instant, and critical intensity is given by $I_{CR} = W_{CR}/D_{CR}$, where W_{CR} is rainfall accumulated over duration D_{CR} . In the second case it is instead characterized with D_{tot} and I_{tot} . Moreover, the P_0 events that have at their beginning a water table height $h_i \geq d_{LZ}\zeta_{CR}$, ζ_{CR} being the critical wetness ratio (corresponding to $FS \leq 1$, see Eq. B6), are removed from the analysis, as the triggering is due to the preceding events, which have been already included in the set of triggering points. Non-triggering events are represented by D_{tot} and I_{tot} .

In our case (see Sect. 2) $\Delta t_{min} = 24h$. It is worthwhile to write that hence the procedure of triggering rainfall identification happens to be equal to the one that applied by Brunetti et al. (2010) in analysing empirical data (observed landslides instead of simulated).

225 3.2 Uncertainty and ROC-based evaluation and optimization of thresholds

The analysis of the Monte Carlo simulations produces two sets: the set of positives P , i.e. of triggering events, and the set of Negatives N , i.e. of non-triggering events. These sets may be represented as scatter plots in a double-logarithmic (D, I) plot, and in general there is a region where both sets are present – let's say, an intersection region $P \cap N$. In our framework this is due to two separate factors:

- to a given (D, I) pair may correspond diverse variable NSRP-simulated hyetographs, because I is the *mean* intensity $I = W/D$ (rain-intensity variability within events)
- To a given (D, I) pair may correspond diverse initial conditions (variability of initial conditions, due to variability of rainfall before the current event).

235 The first uncertainty factor is analyzed by letting the initial water table height $h_i = 0$ for $i = 1, \dots, N_{RE}$ in performing the Monte Carlo experiments (indicated in the ensuing text as $\psi_0 = 0$ case, see also Appendix B). To investigate the second uncertainty factor, those experiments are compared with the complete ones, where the effect of initial conditions depending on past rainfall time history is taken into account by Eq. B2, and considering different levels of memory, by varying the parameters
240 that appear in the water table recession constant τ_M (again see Eq. B2).

Moreover, we compare the results with thresholds derived from the model by assuming uniform hyetographs as input and a prefixed initial condition (constant-intensity physically-based thresholds) (cf., e.g. Rosso et al., 2006; Salciarini et al., 2008; Tarolli et al., 2011). In this case a univocal triggering threshold exists $I = f(D)$, for given hillslope properties, and the two factors of uncertainty illustrated above, are not taken into account. Due to the complexity of the TRIGRS (see Sect. B2) unsaturated model it is possible to determine these thresholds only numerically (not in closed-form). Hence we have derived these thresholds by simulation of infiltration and slope stability using constant-intensity hyetographs in the (D, I) domain discretized at a sufficient level, and searching the triggering curve by interpolation of the results. In doing this we have assumed an initial water
245 table height of zero, $h_{in} = 0$ to properly compare results with the stochastic-input physically-based thresholds of the $\psi_0 = 0$ case.

As a consequence of the presence of the region $P \cap N$, when a triggering rainfall threshold is fixed, say a power-law one $I = a_1 D^{a_2}$, the four cases of True Positives, True Negatives (correct predictions), False Positives and False Negatives (wrong predictions) can occur, as illustrated in Table 1.
255 In general, to each pair of parameters a_1 and a_2 corresponds a prediction performance that may be measured by indices based on the number of occurrences in the four cases, denoted respectively as TP, FN, TN, FP (or ROC-based indices). In order to derive optimal thresholds one may maximize an objective function based on these quantities. Several indexes do exist and their advantages and drawbacks have been discussed by different researchers (cf. Murphy, 1996; Stephenson, 2000;
260 Frattini et al., 2010).

Among the various possibilities, we consider for threshold evaluation the use of True Skill Statistic TSS (also known as Hanssen-Kuipers Discriminant, (Hanssen and Kuipers, 1965)), which was introduced by Peirce (1884), and is given by the difference between the True Positive Rate $TPR = \frac{TP}{P} = \frac{TP}{TP+FN}$ (also known as *sensitivity* or *hit rate* or *recall* or *probability of detection*) and
265 the False Positive Rate $FPR = \frac{FP}{N} = \frac{FP}{TN+FP}$ (also known as *probability of false detection* or *1 - specificity*):

$$TSS = TPR - FPR \quad (1)$$

It is $TSS = 0$ for $TPR = FPR$ (random guess) and $TSS = 1$ for a perfect prediction ($TPR = 1$ and $FPR = 0$). In fact this index TSS is bounded in the interval $[-1, 1]$, but negative values are fictitious
270 as an inversion of the triggering threshold use brings TSS to its absolute value, that is always in the interval $[0, 1]$ (i.e. saying that values below the threshold trigger landslides and vice-versa values

above the threshold do not trigger). Different weights may be given to the TP, TN, FP and FN, as pointed out by Peirce (1884) itself, in order to account for the fact that a FN is more harmful than a FP (see also Peres and Cancelliere, 2012, 2013). Since data on the possible weights to assume are usually scarce, here we prefer to proceed in a more simple and standard manner, where this different weighting is not considered.

We estimate the best performing power-law threshold $I = a_1 D^{a_2}$ as the one that gives the maximum value of $TSS = TSS(a_1, a_2)$.

At the same time the simulation-optimization methodology enables to evaluate the use of power-law ID thresholds, as the value of the objective function is a measure of the maximum performances that can be expected from the adopted functional form for the threshold, and thus a measure of its validity.

It is noteworthy to highlight that the real uncertainty associated with this threshold generally yields different – likely worse – performances of that assessed here, since uncertainty factors are more than the ones related to the stochastic nature of rainfall listed at the beginning of this section.

4 Investigated area and data

4.1 Geological setting and soil properties

An application of the described methodology is carried out to the Peloritani Mountains Ionian coastal area, in North-eastern Sicily, Italy (Figure 2). The mountain ridge extends longitudinally for about 50 km, with a SW-NE orientation, resulting in peaks higher than 1200 m. This area can be subdivided into seven basins: #1 Minor basins between Alcantara and Agrò (70.0 km²), #2 Agrò basin (81.8 km²), #3 Savoca basin (44.2 km²), #4 Pagliara basin (27.1 km²), #5 Minor basins between Pagliara and Fiumedinisi (27.1 km²), #6 Fiumedinisi basin (49 km²) and #7 Minor basins between Fiumedinisi and Cape Peloro (172.9 km²).

The study area belongs geologically to the Calabrian arc and represents the inner chain of the Apennin-Maghrebian mountain belt, and since the middle Pleistocene, the entire Calabrian arc has undergone strong tectonic uplift. Present-day activity is testified by the strong historical seismicity (De Guidi and Scudero, 2013, and references therein). In the area outcropping lithologies consist of (Lentini et al., 2000): (1) phyllites of the Mandanici Units; (2) paragneiss and micaschists of the Mela Units; and (3) gneiss and paragneiss metamorphic rocks (Aspromonte Units). Further information on the geological setting, is given in Lentini et al. (2000); Goswami et al. (2011) and De Guidi and Scudero (2013).

In the last decade, this area has been hit by highly-damaging diffused shallow landslides. Precisely, widespread landslide events occurred in this area on: (I) 15 September 2006 (areas #4, #5, #6 and #7), (II) 25 October 2007 (area #7), (III) 24 September 2009 (areas #1, #2, #3, #4, #5) and (IV) 1 October 2009 (area #7). The areas indicated into brackets have been derived from news-

papers archives (cf. e.g. <http://gazzettadelsud.virtualnewspaper.it/gdsstorico/>), which also present further information on the events. Among these events, the one occurred on 1 October 2009 was the most severe. On that date, landslides were triggered by a rainfall event of more than 220 mm in less than 7 hours, causing 37 deaths and innumerable injured people, most of them in the municipality of Giampilieri (Ardizzone et al., 2012).

A map of the landslides occurred on 1 October 2009, derived from occurred interpretation of orthophotos is available from website http://www.regione.sicilia.it/presidenza/protezionecivile/documenti/rischi/r_idrogeologico/documenti/20091001_CartaDissesti.jpg. This map presents in red the slide/erosion areas and in orange the propagation/deposition areas. Figure 3 shows the slides derived from "red areas" of that map. From the analysis of slopes δ and within the slide areas, based on a pre-event DTM at a 5 m resolution, it results that the most populated class of specific upslope contributing area A/B (ratio between the upslope draining area A and the contour length B , see Appendix B) is centered on the value of 10 m, while the mean slope within the range of theoretical potentially unstable slopes $29^\circ \leq \delta \leq 47^\circ$ results slightly lower than 40° . Also, the values of $A/B = 10$ m and $\delta = 40^\circ$ correspond to a portion of the Peloritani Mountains for which it starts to be worth to issue landslide early warnings. Hence these values may be adopted for the successive derivation of a threshold for the area (see Sect. 5).

Core samples collected in the area indicate the presence of a surficial debris material $d_{LZ} = 2$ m deep covering a fractured bedrock strata. The debris cover consists of a sandy loam with a significant proportion of gravel (up to 50 %) which corresponds to a gravelly sandy loam according to USDA soil classification. The assumption of a leaking basal boundary, characterized by a given c_d ratio (see Sect. B2) is realistic, given the fractured bedrock strata. We assume that the hydraulic and geotechnical properties of Tab. 3 may represent the natural heterogeneity within the study area.

Spatial variability of each of the soil properties could be included in our model simulations. Nonetheless, detailed information on how the properties are distributed spatially is unavailable. Hence we preferred to carry out a sensitivity analysis, by varying the hydraulic conductivity K_S , the leakage ratio c_d and the soil depth d_{LZ} according to Tab. 4, and the critical wetness ratio in the range $0 < \zeta_{CR} < 1$. This way to proceed enables to better analyse the way model results are influenced by these variables rather than assuming that they are distributed spatially with interpolating laws of difficult validation. Since slope mainly affects slope stability (Eq. B5) rather than the infiltration process, variation of slope is indirectly taken into account by variation of ζ_{CR} . It is noteworthy to write that an alternative approach may be of considering model parameters generated according to a probability distribution, as proposed by the TRIGRS-P modification of the TRIGRS code, developed by Raia et al. (2014).

4.2 Rainfall data and NSRP model calibration

Climate in the Peloritani area is Mediterranean with hot and dry summers, and precipitation – mainly convective – falling mostly in the period from October to January.

For calibration of the NSRP model the rainfall series measured at the Fiumedinisi rain gauge
345 from 21 February 2002 to 9 February 2011 (almost 9 years) has been used (see Fig. 2). Based on a preliminary analysis of monthly statistics, six homogeneous rainfall seasons have been identified: (i) September and October, (ii) November, (iii) December, (iv) January–March, (v) April and (vi) May–August (see Fig. 4 and text in its caption). Separate sets of parameters of the NSRP model have been determined for each one of the four rainy seasons (in total $5 \cdot 4 = 20$ parameter values), while
350 the last two seasons have been considered to have negligible rainfall. The Weibull shape parameter b has been fixed to 0.6 for all seasons, based on different trials. Parameters obtained from calibration are shown in Table 2.

From the assumed inter-event time $\Delta t_{\min} = 24$ h and soil properties of Tab. 3 the number of rainfall events results $N_{\text{RE}} = 19826$ (in average 19.83 events per year). This number results from
355 the initial 28 751 events then reduced after cutting the events with hourly intensities always below $i_{\min} = c_d K_s (1 - \cos^2 \delta) = 2.975$ mm/h. These values are statistically comparable to the ones on the observed series (19.18 events/year from 28.91 events/year before the cut of under-leakage events).

5 Results and discussion

5.1 Derivation and evaluation of rainfall thresholds

360 In Fig. 5 the scatter plots of triggering and non-triggering events in the $\log(D) - \log(I)$ plane, derived from analysis of Monte Carlo simulations, are shown for the $\psi_0 = 0$ case and for specific upslope contributing areas $A/B = 10, 20$ m ($\tau_M = 2.75, 5.49$ days). Related results are also shown in Tab. 5. In the figure, red points represent triggering rainfall events, or the set of Positives P , while green points represent the non-triggering ones, or the set of Negatives N .

365 Optimal thresholds have been derived by maximization of the TSS index (see Eq. 1), preliminarily by considering both the power-law coefficient a_1 and exponent a_2 as variable parameters. Inspection of the results revealed minimal changes of the exponent a_2 with changing ratio A/B , and so a second optimization has been carried out only with reference to the a_1 parameter, fixing the exponent a_2 to its mean value of $a_2 = -0.8$. Fixing the exponents forces the different thresholds corresponding
370 to different A/B ratios to be parallel and therefore to not intersect each other, this somehow is consistent with the fact that as the A/B increases, landslides are generally more likely to occur for less severe rainfall events because of increased past-rainfall memory.

From the case of $\psi_0 = 0$, i.e. of an initial water table at the soil-bedrock interface for all events (Fig. 5a), where simulated uncertainty of triggering is due only to the variation of rain intensity

375 within events, it is seen that in this case the region in which triggering and non-triggering events co-
 exist is quite narrow; moreover, a power-law relation between I and D dichotomizes well between
 triggering and non-triggering conditions. In fact, the optimal power-law threshold in this case has
 a reliability of TSS = 0.991, practically equal to the ideal value of 1. Additional insights on the
 effect of variability of rainfall intensity within events may be derived comparing the scatter plots for
 380 this $\psi_0 = 0$ case with the constant-intensity physically-based threshold (also determined considering
 $\psi_0 = 0$) represented in the plots of Fig. 5 as a dashed black line. Fig. 5a reveals that the deterministic
 threshold approximates the lower envelope curve of critical events (red dots) for short durations, say
 $D \leq D_s$, that in this case corresponds to about 12 h. For higher durations, this is no longer true and
 variable-intensity hyetographs start to have a higher destabilizing effect than the constant-intensity
 385 ones of same rainfall volume. The variability of rainfall intensity within events leads to a deviation
 from the deterministic line of the triggering NSRP rainfall event points, making the scatter of trig-
 gering points more similar to a straight line rather than to the curved deterministic threshold. This
 behavior is essentially due to the presence of the leakage term $q_l = \min\{c_d K_s(1 - \cos^2 \delta), q(d_u, t)\}$,
 whose effect is stronger for uniform hyetographs than for variable ones, since in the former case
 390 there are no peaks of intensity. In particular, a uniform hyetograph produces no water table rise if
 intensity is below a rate slightly greater than $c_d K_s(1 - \cos^2 \delta)$, because all infiltrating water, after
 percolating through the unsaturated-zone, goes to basal loss. The same does not generally occur for
 a variable intensity hyetograph of same volume, because instantaneous intensity may be significantly
 higher than the event mean intensity $W_{\text{tot}}/D_{\text{tot}}$, and consequently a water table rise is produced. The
 395 opposite behavior for short durations is due to the fact that in this case variable hyetographs may
 have peaks of intensity higher than infiltration capacity, and thus not all rainfall infiltrates in the soil.
 Due to these reasons, the model deterministic threshold results poor performing (TSS = 0.642).

The above results lead to conclude that it is important to account for variability of intensity during
 events and that landslide occurrence related to the transient part of the response to rainfall events can
 400 be represented with good approximation by a ID power-law equation. This provides a physically-
 based justification for such a widely-used threshold form, which results valid when landslide occur-
 rence is mostly due to the transient part of the hillslope response to rainfall.

For the $A/B = 10$ m case (Fig. 5b), which may represent prevalent conditions for the Peloritani
 Mountains area (see Sect. 4.1), scattering of the red dots increases due to the introduced variability of
 405 initial conditions. Consequently, performances of predictions based only on intensity and duration of
 rainfall events become worse. Simulations for larger values of specific catchment area (e.g. $A/B =$
 20 m, Fig. 5c) confirm this conclusion.

Based on these results, it may be stated that, for a given climatic input, performances of thresholds
 which do not account for past rainfall time history (antecedent rainfall) are expected to decrease as
 410 the water table recession time constant τ_M increases. Rainfall time history occurring before single
 rainfall events generally influences landslide triggering, determining whether a threshold based on

rainfall Intensity and Duration only may be sufficient or the ID threshold needs to be improved by the introduction of antecedent rainfall variables.

Finally, the threshold:

$$I = 71.52D^{-0.8} \quad (2)$$

may be a reasonable choice for the Peloritani Mountains area since performances are still high and of TSS = 0.862.

5.2 Validation of the threshold using observed data and comparison with other thresholds

Monte Carlo simulation provides a framework that is useful for exploiting the information contained in the observed rainfall series and the physics of the modeled phenomena. Nonetheless, it remains important to validate the results against observed data, to check if the models are capable of reproducing characteristics of interest which are not directly taken into account in model calibration and development.

Here we perform a global validation by comparing the derived threshold (Eq. 2) with the triggering and non-triggering observed rainfall events.

In particular we have derived from the series the rainfall events with the same criterion adopted in Monte Carlo simulations. Yet the events in the months neglected there (April-August) and the events with intensities below the leakage flow $c_d K_S (1 - \cos^2(\delta))$ were not removed here in the observed record, for the test to be unbiased to this preprocessing of data. This resulted into 190 events, whose temporal evolution of accumulated intensities $I(D) = W(D)/D$ has been compared with the derived threshold, as shown in Figure 6. The figure indicates positive validation of the methodology, as the events in the $I-D$ plane that exceed the threshold are all and only the four events that have triggered landslides in the considered period (red-line time histories). This is the best result one can obtain from this test, but it is perhaps noteworthy to clarify that it is expected that in the long period the same test will not perform without errors, consistently with the Monte Carlo simulations and the way that the threshold was derived.

Comparison with other thresholds may also help in understanding how reliable the performed analysis is. Gariano et al. (2013) proposed for Sicily the threshold $E = 10.4D^{0.22}$, where $E = I \times D$ is cumulative event rainfall, and hence threshold is equivalent to $I = 10.4D^{-0.78}$. This threshold has been derived considering only observed triggering events and it is corresponding to an exceedance frequency of 1%. It is firstly interesting to notice that the exponent is practically equal to the one that results from our analyses ($a_2 = -0.8$). Furthermore, as can be seen from Figure 5b this threshold exceeds one triggering event of the MC simulated data, which equals the 1% of the triggering-rainfall dataset (see Table 5: $0.01 \times (TP + FN) = 0.01 \times (104 + 11) = 1.15$). This result is a further support to the validity of the performed Monte Carlo analysis and highlights the importance to take into account non-triggering rainfall in assessing threshold performance.

5.3 Sensitivity analysis

A sensitivity analysis has been conducted with respect to the following variables (Sect. 4 and Tab. 4): the hydraulic conductivity K_S , the leakage ratio c_d , the soil depth d_{LZ} and the critical wetness ratio ζ_{CR} . For each set of fixed values of these variables plots similar to those of Fig. 5 can be derived. For brevity those plots are not shown here and the analysis is performed considering the plots of the optimal threshold coefficient a_1 (again the exponent has been fixed to $a_2 = -0.80$) and the maximum value of the objective function TSS as functions of ζ_{CR} .

The results of this analysis are shown in Figs. 7–8, which can be commented as follows:

- *Analysis of sensitivity to hydraulic conductivity:* In the $\psi_0 = 0$ case the variation of K_S induces relevant changes neither in the threshold nor in the performance TSS. It can however be hypothesized that considering more low values of K_S , infiltrating rates more strongly depend on how rainfall is distributed within the event and thus uncertainty increases. Conversely, to an higher K_S variation neither of the threshold nor of the performance may be observed, since infiltration capacity will always be higher than rainfall intensity, which then infiltrates totally. In the $\frac{A}{B} = 10$ m case the variations of a_1 and TSS are relevant and due to increased memory with decreasing K_S ; the threshold decreases with K_S and the associated uncertainty increases (lower TSS)
- *Analysis of sensitivity to leakage ratio:* Both in the $\psi_0 = 0$ and the $\frac{A}{B} = 10$ m cases the variation of the c_d ratio induces an increase of the threshold and in the relative uncertainty. The variation is of comparable magnitude in the two cases. This happens because the variation of c_d affects only pressure head response during rainfall events, but does not affect significantly memory due to antecedent rainfall. Sensitivity to c_d increases with soil depth, because the increased water absorption in the unsaturated strata and the consequent increased damping and smoothing effect induces an increase of the portion of infiltrating water that goes to leakage. Indeed this affects more the threshold (a_1) than the relative performance (TSS)
- *Variation of ζ_{CR} and of soil depth d_{LZ} :* with increasing ζ_{CR} the threshold increases, while the associated uncertainty decreases. The threshold and relative performances decrease with soil depth. This indicated that landslides become less predictable as soil depth d_{LZ} and ζ_{CR} diminish.

Generally antecedent rainfall has to be taken into account to improve performance of landslide triggering thresholds based on rainfall. Nonetheless, the use of I and D variables only may still lead to good performing thresholds when memory is relatively low, soil thickness is not too shallow and hillslope is naturally not close to instability (ζ_{CR} is relatively high). In fact I-D power-law thresholds resulted of good performance (TSS>0.8) when $\tau_M \leq 3$ days, $\zeta_{CR} > 0.5$ and $d_{LZ} \geq 1.5$ m.

The constant rainfall physically-based thresholds perform always poorly. This confirms that vari-

ability of intensity during rainfall events influences significantly rainfall Intensity and Duration associated to landslide triggering.

6 Conclusions

485 In this work it has been shown how rainfall stochastic models and hydrological and slope stability physically-based models can be advantageously combined in a Monte Carlo simulation framework to derive and evaluate landslide triggering thresholds. The approach synthesizes research findings in the fields of rainfall and landslide hydrological modeling to provide an output that is easily implementable in a early warning system, i.e. a landslide triggering threshold, based on rainfall monitoring, of the same type that is commonly derived by direct empirical analysis of observed rainfall and
490 landslide data. The advantages of the approach consist in a better exploitation of the information contained in observed rainfall series and measurements of hydraulic, geotechnical soil properties and geomorphological analysis. Because both triggering and non-triggering rainfall events are taken into account, the approach enables a more correct derivation and evaluation of thresholds, for which
495 well-known prediction-skill Receiver-Operating-Characteristic analysis may be advantageously used to reduce subjectivity in the identification of thresholds and to estimate the convenience of the use of the threshold within a landslide early warning system.

Furthermore, the specific modeling framework implemented in this work enabled to analyse some general issues on landslide triggering phenomena regarding its controlling factors and uncertainty
500 related to variability of rainfall intensity within events and past rainfall (antecedent rainfall), with a particular focus on the widely-used power-law rainfall Intensity-Duration threshold form. In particular, from the application to the Peloritani Mountains area in North-eastern Sicily (Italy) and the conducted sensitivity analysis on various controlling parameters, the following conclusions can be drawn: (1) Variability of intensity during rainfall events influences significantly rainfall Intensity
505 and Duration associated to landslide triggering. In particular constant-intensity input thresholds perform conservatively only for low rainfall durations, while the opposite occurs for events of longer duration. On the other hand, when a time variable rainfall-rate event is considered, the simulated triggering points may be separated with a very good approximation (True Skill Statistic results close to 1) from the non-triggering ones by a power-law ID equation. This indicates that this widely-used
510 model is adequate to represent the triggering part due to transient infiltration produced by rainfall events. Thus this gives a physically-based justification for such a widely-used threshold form, which results valid when landslide occurrence is mostly due to that part. This depends, for a given rainfall climate, mostly on the timing of recession of the saturated zone occurring during dry inter-event intervals (in our model represented by the constant τ_M), but also on the other soil hydraulic and
515 geotechnical parameters, and in particular on soil depth d_{LZ} , which must not be too shallow, and critical wetness ratio ζ_{CR} , that must be not too low. For instance, for the case study area, the I-

D power-law threshold performs with a TSS > 0.80 when it is $\tau_M \leq 3$ days and $d_{LZ} \geq 1.5$ m and $\zeta_{CR} > 0.50$ (2) In general, rainfall time history occurring before single rainfall events influences landslide triggering, determining whether a threshold based on rainfall Intensity and Duration only may be sufficient or the ID threshold needs to be improved by the introduction of antecedent rainfall variables (3) Sensitivity analysis indicated that in general threshold performance is affected by the depth of the basal boundary and the critical wetness ratio that represents the natural degree of stability of the hillslope. In particular, uncertainty of landslide triggering prediction increases as the soil depth or the critical wetness decrease. Hence it is more difficult to predict landslides the more an hillslope is shallow and the more is naturally close to instability. A decrease of performance results as basal drainage (leakage) increases as well. Hence the I-D power-law may not be performing adequately in the case that the bedrock is significantly fractured and the soil cover is very shallow. Results also indicate that hydraulic conductivity mainly influences memory of past rainfall and only slightly affects the uncertainty related to variability of rainfall intensity within events.

Further ongoing research is oriented to introduce additional information in the derivation of the thresholds, such as antecedent precipitation as well as indexes representative of the shape of the hyetograph.

Appendix A

Rainfall stochastic model

Point rainfall stochastic models are aimed at the generation realistic synthetic time series of (virtually) unlimited length, by calibration based on a observed rainfall series. The uninitiated reader is invited to read Neyman and Scott (1958); Kavvas and Delleur (1975); Waymire and Gupta (1981a,b,c); Rodriguez-Iturbe et al. (1987a,b); Salas (1993); Cowpertwait et al. (1996). Here we give some specific details on the Neyman-Scott Rectangural Pulses (NSRP) model, for it being the one used in this work to model rainfall at a site.

NSRP process belongs to the so-called class of *cluster* models (cf., e.g., Salas, 1993). The NSRP cluster model consists in a two-level mechanism process. This process is related to a conceptualization of meteorological processes that originate rainfall events (Foufoula-Georgiou and Guttorp, 1989), and it is obtained by the following steps (see Fig. A.1):

- First, *clusters* – also known as *storm-generating systems*, or simply *storms* – arrive governed by a Poisson process of parameter λt (this is the first-level mechanism)
- For each cluster origin, rectangular pulses (rain cells) are generated (this is the second-level mechanism). The number of pulses C associated to each storm is extracted from another

separate Poisson distribution. In order to have realizations of C not less than one, it is assumed that $C' = C - 1$, with $c' = 0, 1, 2, \dots$ (which implies $c = 1, 2, 3, \dots$), is Poisson distributed with mean $\nu - 1$

- Each cell has origin at time $\tau_{i,j}$ with $j = 1, 2, \dots, c_i$ measured from t_i , according to an exponential random variable of parameter β
- A rectangular pulse of duration $d_{i,j}$ and intensity $x_{i,j}$ is associated to each rain cell. Pulses have duration exponentially distributed with parameter η while intensities X are extracted from a Weibull distribution (cf. Cowpertwait et al., 1996), which has cumulative distribution function $F(x; \xi, b) = 1 - \exp(-\xi x^b)$
- Finally, the total intensity at any point in time is given by the sum of the intensities of all active cells at that point.

We calibrate the NSRP model by the method of moments, i.e. using the properties of the aggregated NSRP process $Y(\tau)$ at different time scales of aggregation τ (cf., e.g., Rodriguez-Iturbe et al., 1987a,b; Cowpertwait et al., 1996; Calenda and Napolitano, 1999). According to this method, model parameters, i.e., $\lambda, \nu, \beta, \eta$ and ξ (b is typically fixed, in the range $0.6 \leq b \leq 0.9$, see Cowpertwait et al., 1996) are estimated using at least as many moments as the parameters of the model, considering different statistics (moments) at various time aggregations, and solving the related equation system, where the theoretical expressions, containing the parameters, are equated to the sample moments. Theoretical moments of $Y(\tau)$, such as the mean $\mu(\tau)$, variance $\gamma(\tau)$ and autocorrelation at lag k , $\rho(\tau, k)$, are given by formulas derived by Rodriguez-Iturbe et al. (1987a). Transition probabilities were derived as well, by Cowpertwait (1991), and have been included in the calibration process. We have solved the non linear equation system by numerical minimization of an objective function $S(\lambda, \nu, \beta, \eta, \xi)$, that measures the global relative error between theoretical and sample moments (cf. Cowpertwait et al., 1996).

Though calibration is conducted taking into account seasonality, by calibrating the model separately for the various homogeneous season within the year (section 4.2), it is noteworthy to point out that the generated series is globally stationary, and consequently eventual annual non-stationarity due to climate change, is not taken into account. In other words, the generated series represents possible realizations of the rainfall events under current climate conditions, the final aim being of deriving thresholds suitable under the present climate and not to assess how climate change may affect them.

Appendix B

Hillslope hydrological and stability model

The total pressure head response ψ of an hillslope soil to a rainfall event is given by the sum of a transient part ψ_1 and an initial part ψ_0 (cf. Iverson, 2000; D’Odorico et al., 2005). The transient part is due to infiltration of event rainfall, while the initial part depends on rainfall time history before the current rainfall event. As pointed out by Iverson (2000), for soils that are relatively shallow, i.e. when the ratio between soil depth and the square-root of the upslope contributing area is small, $\varepsilon = d_{LZ}/\sqrt{A} \ll 1$, the prevailing process that determines ψ_1 is 1-D vertical infiltration, while in the dry periods in between events, the prevailing process is sub-horizontal drainage.

Based on these considerations, we use a vertical infiltration model for computing ψ_1 , the TRIGRS unsaturated model (Baum et al., 2008, 2010), and a linear reservoir sub-horizontal drainage model to compute the initial conditions from the water table height at the end of the rainfall event preceding the current one (which in turn depends on past rainfall time history). This latter model is derived from a mass conservation equation of soil water coupled with the Darcy’s law used to describe seepage flow, where for simplicity the soil volumetric strain is neglected (the variation of porosity with pressure head is assumed null). A similar conceptualization is the basis of the model proposed by Rosso et al. (2006).

In order to understand the controlling factors of landslide triggering, it is useful to separate the analysis of the response to rainfall in terms of the transient part only. This may be done by performing the simulations assuming $\psi_0 = 0$ at the beginning of events.

From pressure head response, the factor of safety FS for slope stability is computed, using a infinite slope model.

The description of these model components follows.

B1 Initial conditions model

The initial condition to rainfall event i is computed from the response at the end of rainfall event $i - 1$, using a water table height h recession model between storms based on the following mass-conservation equation (Rosso et al., 2006):

$$BhK_s \sin \delta = -A (\theta_s - \theta_r) \frac{dh}{dt}, \quad (B1)$$

where A is the contributing area draining across the contour length B of the lower boundary of the hillslope, δ is the inclination of the hillslope, K_s is the saturated hydraulic conductivity, and $\theta_s - \theta_r$ is soil porosity, θ_s and θ_r being the saturated and residual soil water contents respectively.

The ratio A/B , which can be computed based on a Digital Terrain Model (DTM), is the well-

known *specific upslope contributing area*, an important variable on which the topographic control on shallow landslide triggering depends (Montgomery and Dietrich, 1994). For instance, it is $A/B = BN_d$, where N_d is the number of cells draining into the local one, if one determines flow paths via the non-dispersive single direction (D8) method (O’Callaghan and Mark, 1984). Other methods
620 consider multiple flow directions (cf. Holmgren, 1994).

The solution to Eq. (B1) is used to compute the water table height at the beginning of rainfall event i :

$$h_i = \frac{\psi(d_{LZ}, t_{f,i-1})}{\cos^2 \delta} \exp\left(-\frac{K_s \sin \delta}{\frac{A}{B}(\theta_s - \theta_r)} \Delta t_i\right) = \frac{\psi(d_{LZ}, t_{f,i-1})}{\cos^2 \delta} \exp\left(-\frac{\Delta t_i}{\tau_M}\right). \quad (B2)$$

where interarrival time Δt_i is defined in Sect. 2. The time constant τ_M regulates the pressure head
625 memory from one event to another.

The initial pressure head distribution above the water table is computed accordingly with assumptions of the transient vertical infiltration model (see next section B2), letting the steady (initial) surface flux $I_{ZLT} = 0$, which yields the following equation (see Baum et al., 2010; Baum and Godt, 2013):

$$630 \quad \psi(Z, t = 0) = -(d_u - Z) \cos \delta - \frac{1}{\alpha} \quad (B3)$$

for depths $Z \leq d_u$, d_u being the depth to the top of the capillary fringe and α the parameter of Gardner’s (1958) exponential soil-water characteristic curve (cf. Fig. B.1).

B2 Transient infiltration model

Reference scheme for a simulated hillslope is shown in Fig. B.1. Infiltration in the unsaturated zone
635 is modeled through Richards’ (1931) vertical-infiltration equation for a sloping surface particularized for the Gardner’s (1958) exponential soil-water characteristic curve $K(\psi) = K_s \exp\{\alpha(\psi - \psi_{cf})\}$:

$$\frac{\alpha_1(\theta_s - \theta_r)}{K_s} \frac{\partial K}{\partial t} = \frac{\partial^2 K}{\partial Z^2} - \alpha_1 \frac{\partial K}{\partial Z} \quad (B4)$$

where K_s is the saturated hydraulic conductivity, α is the SWCC parameter, $\psi_{cf} = -1/\alpha$ is the pressure head at the top of the capillary fringe, θ_r is the residual water content, θ_s is the water
640 content at saturation and $\alpha_1 = \alpha \cos^2 \delta$.

A closed-form solution to this equation for $\delta = 0$ has been provided by Srivastava and Yeh (1991) and extended to a sloping surface by Savage et al. (2004), and used in the TRIGRS unsaturated model (Baum et al., 2008, 2010).

The solution to Richards’ equation provides the pore pressure profile in the unsaturated zone, and
645 a flux to the saturated zone $q(d_u, t)$. Because of the partial absorption of water within the unsaturated zone, this flux results damped and smoothed respect to the infiltrating flux at the ground surface (cf. Figure 8 of Baum et al., 2008). The TRIGRS model then computes water table rise using $q(d_u, t)$ and subtracting from it a leakage flow rate given by $q_l = \min\{c_d K_s (1 - \cos^2 \delta), q(d_u, t)\}$ (vertical

drainage at the basal boundary, which is not assumed perfectly impervious), where c_d represents
 650 the ratio between saturated hydraulic conductivities of the basal boundary layer and of the regolith
 surficial layer. In the case that no specific information on c_d ratio is available, a reasonable value
 may be $c_d = 0.1$ (cf. Baum et al., 2010), which means that hydraulic conductivity of the layer below
 depth $Z = d_{LZ}$ is of one order of magnitude less than the regolith surficial layer.

The resulting water table rise is computed by comparing this excess flux accumulating at the top
 655 of the capillary fringe to the available pore space directly above it.

Pressure head rise is assumed transient in the saturated zone as well, and computed by formulas
 adapted from analogous heat-flow problems (see Baum et al., 2008).

B3 Slope stability model

For analysis of hillslope stability we assume an infinite slope scheme, and compute minimum factor
 660 of safety FS with the following formula (Taylor, 1948):

$$FS(d_{LZ}, t) = \frac{\tan \phi'}{\tan \delta} + \frac{c' - \psi(d_{LZ}, t) \gamma_w \tan \phi'}{\gamma_s d_{LZ} \sin \delta \cos \delta}, \quad (B5)$$

where c' is soil cohesion for effective stress, ϕ' is the soil friction angle for effective stress, γ_w is the
 unit weight of groundwater, γ_s is the soil unit weight and δ is the slope angle. In this scheme the
 failure occurs at the basal boundary $Z = d_{LZ}$, because pressure head results maximum at that depth.

665 It is useful to consider the critical wetness ratio, derived from Eq. (B5) letting $FS = 1$, which
 is a parameter that for a given hillslope (given slope δ and soil depth d_{LZ}), depends only on the
 geotechnical characteristics of the soil:

$$\zeta_{CR} = \frac{\gamma_s}{\gamma_w} \left[\left(\frac{c'}{\gamma_s d_{LZ} \sin \delta \cos \delta} - 1 \right) \frac{\tan \delta}{\tan \phi'} + 1 \right]. \quad (B6)$$

The ζ_{CR} varies from 0 to 1, respectively for an unconditionally unstable and a unconditionally sta-
 670 ble hillslope (Montgomery and Dietrich, 1994), and hence it indicates the natural degree of stability
 of the hillslope.

Acknowledgements. This research was partially funded by the Italian Education, University and Research Min-
 istry (MIUR), PON Project No. 01_01503 *Integrated Systems for Hydrogeological Risk Monitoring, Early*
Warning and Mitigation Along the Main Lifelines, CUP B31H11000370005. Rex L. Baum of United States
 675 Geological Survey and Jorge A. Ramirez of Colorado State University are acknowledged for their useful sug-
 gestions. The authors would like to thank the four anonymous reviewers and S.L. Gariano for their useful
 comments.

References

- Aleotti, P.: A warning system for rainfall-induced shallow failures, *Engineering Geology*, 73, 247–265, 2004.
- 680 Ardizzone, F., Basile, G., Cardinali, M., Casagli, N., Del Conte, S., Del Ventisette, C., Fiorucci, F., Garfagnoli, F., Gigli, G., Guzzetti, F., Iovine, G., Mondini, A., Moretti, S., Panebianco, M., Raspini, F., Reichenbach, P., Rossi, M., Tanteri, L., and Terranova, O.: Landslide inventory map for the Briga and the Giampilieri catchments, NE Sicily, Italy, *Journal of Maps*, 8, 176–180, 2012.
- Balistrocchi, M. and Bacchi, B.: Modelling the statistical dependence of rainfall event variables through copula functions, *Hydrology and Earth System Sciences*, 15, 1959–1977, doi:http://dx.doi.org/10.5194/hess-15-1959-201110.5194/hess-15-1959-2011, 2011.
- 685 Balistrocchi, M., Grossi, G., and Bacchi, B.: An analytical probabilistic model of the quality efficiency of a sewer tank, *Water Resources Research*, 45, n/a–n/a, doi:http://dx.doi.org/10.1029/2009WR00782210.1029/2009WR007822, 2009.
- 690 Barnes, L., Gruntfest, E., Hayden, M., Schultz, D., and Benight, C.: False alarms and close calls: A conceptual model of warning accuracy, *Weather and Forecasting*, 22, 1140–1147, 2007.
- Baum, R. L. and Godt, J. W.: Early warning of rainfall-induced shallow landslides and debris flows in the USA, *Landslides*, 7, 259–272, 2010.
- Baum, R. L. and Godt, J. W.: Correction to “Estimating the timing and location of shallow rainfall-induced landslides using a model for transient, unsaturated infiltration”, *Journal of Geophysical Research: Earth Surface*, 118, 1999–1999, doi:http://dx.doi.org/10.1002/jgrf.2010010.1002/jgrf.20100, 2013.
- 695 Baum, R. L., Savage, W. Z., and Godt, J. W.: TRIGRS – A FORTRAN Program for Transient Rainfall Infiltration and Grid-Based Regional Slope-Stability Analysis, U.S. Geological Survey Open-File Report 02-0424, Reston, Virginia, 2002.
- 700 Baum, R. L., Savage, W. Z., and Godt, J. W.: TRIGRS – A FORTRAN program for transient rainfall infiltration and grid-based regional slope-stability analysis, version 2.0., U.S. Geological Survey Open-File Report 2008-1159, Reston, Virginia, 2008.
- Baum, R. L., Godt, J. W., and Savage, W. Z.: Estimating the timing and location of shallow rainfall-induced landslides using a model for transient, unsaturated infiltration, *Journal of Geophysical Research*, 115, F03 013, 2010.
- 705 Berti, M., Martina, M., Franceschini, S., Pignone, S., Simoni, A., and Pizziolo, M.: Probabilistic rainfall thresholds for landslide occurrence using a Bayesian approach, *Journal of Geophysical Research F: Earth Surface*, 117, 2012.
- Bonta, J. V. and Rao, A. R.: Factors affecting the identification of independent storm events, *Journal of Hydrology*, 98, 275 – 293, doi:http://dx.doi.org/http://dx.doi.org/10.1016/0022-1694(88)90018-2http://dx.doi.org/10.1016/0022-1694(88)90018-2, 1988.
- 710 Brunetti, M., Peruccacci, S., Rossi, M., Luciani, S., Valigi, D., and Guzzetti, F.: Rainfall thresholds for the possible occurrence of landslides in Italy, *Natural Hazards and Earth System Science*, 10, 447–458, 2010.
- Caine, N.: The Rainfall Intensity: Duration Control of Shallow Landslides and Debris Flows, *Geografiska Annaler. Series A, Physical Geography*, 62, 23–27, 1980.
- 715 Calenda, G. and Napolitano, F.: Parameter estimation of Neyman-Scott processes for temporal point rainfall simulation, *Journal of Hydrology*, 225, 45–66, 1999.

- Campbell, R. H.: Soil Slips, Debris Flows, and Rainstorms in the Santa Monica Mountains and Vicinity, Southern California, Professional Paper 851, U.S. Govt. Print. Off., Washington, D.C., 1975.
- 720 Cancelli, A. and Nova, R.: Landslides in soil debris cover triggered by rainstorms in Valtellina (central Alps – Italy), paper presented at the 4th International Conference on Landslides, Tokyo, pp. 267–272, Jpn. Geol. Soc., Tokyo, 1985.
- Cannon, S. H. and Ellen, S. D.: Rainfall conditions for abundant debris avalanches in the San Francisco Bay Region, California, Calif. Geol., 38, 1985.
- 725 Capparelli, G. and Versace, P.: FLAIR and SUSHI: two mathematical models for early warning of landslides induced by rainfall, Landslides, 8, 67–79, 2011.
- Cowpertwait, P.: Further developments of the Neyman-Scott clustered point process for modeling rainfall, Water Resources Research, 27, 1431–1438, 1991.
- Cowpertwait, P. S. P., O’Connell, P. E., Metcalfe, A. V., and Mawdsley, J.: Stochastic point process modelling of rainfall. I. Single-site fitting and validation, Journal of Hydrology, 175, 17–46, 1996.
- 730 Cox, D. R. and Isham, V.: Point Processes, CRC Press, 1980.
- De Guidi, G. and Scudero, S.: Landslide susceptibility assessment in the Peloritani Mts. (Sicily, Italy) and clues for tectonic control of relief processes, Natural Hazards and Earth System Science, 13, 949–963, doi:http://dx.doi.org/10.5194/nhess-13-949-2013, 2013.
- 735 D’Odorico, P., Fagherazzi, S., and Rigon, R.: Potential for landsliding: Dependence on hyetograph characteristics, Journal of Geophysical Research: Earth Surface, 110, 2005.
- Fathani, T. F., Karnawati, D., Sassa, K., Fukuoka, H., and Honda, K.: Development of landslide monitoring and early warning system in Indonesia, in: Proceedings of The First World Landslide Forum, pp. 195–198, Tokyo, 2009.
- 740 Foufoula-Georgiou, E. and Guttorp, P.: Assessment of a Class of Neyman-Scott Models for Temporal Rainfall, Journal of Geophysical Research, 92, 9679–9682, 1989.
- Frattini, P., Crosta, G., and Carrara, A.: Techniques for evaluating the performance of landslide susceptibility models, Engineering Geology, 111, 62–72, 2010.
- Gardner, W. R.: Some steady-state solutions of the unsaturated moisture flow equation with evaporation from a water table, Soil Science, 85, 228–232, 1958.
- 745 Gariano, S., Iovine, G., Antronico, L., Brunetti, M., Melillo, M., Peruccacci, S., and Terranova, O.: Rainfall thresholds for the initiation of shallow landslides in Sicily, Rendiconti Online Societa Geologica Italiana, 24, 155–157, 2013.
- Glade, T., Crozier, M., and Smith, P.: Applying Probability Determination to Refine Landslide-triggering Rainfall Thresholds Using an Empirical ”Antecedent Daily Rainfall Model”, Pure and Applied Geophysics, 157, 1059–1079, 2000.
- 750 Goswami, R., Mitchell, N., and Brocklehurst, S.: Distribution and causes of landslides in the eastern Peloritani of NE Sicily and western Aspromonte of SW Calabria, Italy, Geomorphology, 132, 111–122, 2011.
- Guzzetti, F., Peruccacci, S., Rossi, M., and Stark, C. P.: Rainfall thresholds for the initiation of landslides in central and southern Europe, Meteorology and Atmospheric Physics, 98, 239–267, 2007.
- 755 Hanssen, A. W. and Kuipers, W. J. A.: On the Relationship between the Frequency of Rain and Various Meteorological Parameters: (with Reference to the Problem of Objective Forecasting), vol. 81 of *Mededelingen en*

verhandelingen, 1965.

- Highland, L. M. and Bobrowsky, P.: The landslide handbook - A guide to understanding landslides, Tech. Rep. 1325, 129 p., U.S. Geological Survey, Reston, Virginia, 2008.
- 760 Holmgren, P.: Multiple flow direction algorithms for runoff modelling in grid based elevation models: an empirical evaluation, *Hydrological Processes*, 8, 327–334, 1994.
- Iverson, R. M.: Landslide triggering by rain infiltration, *Water Resources Research*, 36, 1897–1910, 2000.
- Kavvas, M., L. and Delleur, J., W.: The stochastic and cronologic structure of rainfall sequence: Application to Indiana, Tech. Rep. 1325, 129 p., Tech. Rep. 57, Water Resour. Res. Cent., Purdue University, West Lafayette, Ind., 1975.
- 765 Keefer, D. K., Wilson, R. C., Mark, R. K., Brabb, E. E., Brown, W. M., Ellen, S. D., Harp, E. L., Wieczorek, G. F., Alger, C. S., and Zarkin, R. S.: Real-Time Landslide Warning During Heavy Rainfall, *Science*, 238, 921–925, 1987.
- 770 Lentini, F., Catalano, S., and Carbone, S.: Note illustrative della Carta Geologica della Provincia di Messina, scala 1: 50.000, Tech. rep., Provincia Regionale di Messina, Assessorato Servizio Territorio—Servizio Geologico, 2000.
- Montgomery, D. R. and Dietrich, W. E.: A physically based model for the topographic control on shallow landsliding, *Water Resources Research*, 30, 1153–1171, 1994.
- 775 Murphy, A.: The Finley affair: A signal event in the history of forecast verification, *Weather and Forecasting*, 11, 3–20, 1996.
- Neyman, J. and Scott, E. L.: Statistical Approach to Problems of Cosmology, *Journal of the Royal Statistical Society. Series B (Methodological)*, 20, 1–43, 1958.
- O’Callaghan, J. F. and Mark, D. M.: The extraction of drainage networks from digital elevation data, *Computer Vision, Graphics, and Image Processing*, 28, 323–344, 1984.
- 780 Peirce, C. S.: The numerical measure of the success of predictions, *Science*, 4, 453–454, 1884.
- Peres, D. and Cancelliere, A.: Development of rainfall thresholds for landslide early warning in Sicily: A method based on the use of rainfall annual maxima series, *Rendiconti Online Societa Geologica Italiana*, 21, 580–582, 2012.
- Peres, D. J. and Cancelliere, A.: Defining Rainfall Thresholds for Early Warning of Rainfall-Triggered Landslides: The Case of North-East Sicily, in: *Landslide Science and Practice*, edited by Margottini, C., Canuti, P., and Sassa, K., pp. 257–263, Springer Berlin Heidelberg, doi:http://dx.doi.org/10.1007/978-3-642-31337-0_310, 2013.
- 785 Peruccacci, S., Brunetti, M. T., Luciani, S., Vennari, C., and Guzzetti, F.: Lithological and seasonal control on rainfall thresholds for the possible initiation of landslides in central Italy, *Geomorphology*, 139–140, 79 – 90, 2012.
- Raia, S., Alvioli, M., Rossi, M., Baum, R. L., Godt, J. W., and Guzzetti, F.: Improving predictive power of physically based rainfall-induced shallow landslide models: a probabilistic approach, *Geoscientific Model Development*, 7, 495–514, doi:<http://dx.doi.org/10.5194/gmd-7-495-2014>, <http://www.geosci-model-dev.net/7/495/2014/>, 2014.
- 790 Restrepo-Posada, P. J. and Eagleson, P. S.: Identification of independent rainstorms, *Journal of Hydrology*, 55, 303 – 319, doi:[http://dx.doi.org/http://dx.doi.org/10.1016/0022-1694\(82\)90136-](http://dx.doi.org/http://dx.doi.org/10.1016/0022-1694(82)90136-)

6[http://dx.doi.org/10.1016/0022-1694\(82\)90136-6](http://dx.doi.org/10.1016/0022-1694(82)90136-6), 1982.

- 795 Richards, L.: Capillary conduction of liquids through porous mediums, *Physics*, 1, 219–233, 1931.
- Rodriguez-Iturbe, I., Cox, D. R., and Isham, V.: Some Models for Rainfall Based on Stochastic Point Processes, *Proceedings of the Royal Society of London. Series A, Mathematical and Physical Sciences*, 410, 269–288, 1987a.
- Rodriguez-Iturbe, I., De Power, B. F., and Valdes, J. B.: Rectangular Pulses Point Process Models for Rainfall: Analysis of Empirical Data, *Journal of Geophysical Research*, 92, 9645–9656, 1987b.
- 800 Rosso, R., Rulli, M. C., and Vannucchi, G.: A physically based model for the hydrologic control on shallow landsliding, *Water Resources Research*, 42, 1–16, 2006.
- Salas, J. D.: Analysis and Modeling of Hydrologic Time Series, chap. 19, *Handbook of Hydrology*, McGraw-Hill, 1993.
- 805 Salciarini, D., Godt, J. W., Savage, W. Z., Baum, R. L., and Conversini, P.: Modeling landslide recurrence in Seattle, Washington, USA, *Engineering Geology*, 102, 227–237, 2008.
- Savage, W. Z., Godt, J. W., and Baum, R. L.: Landslides: Evaluation and Stabilization, *Proceedings of the 9th International Symposium on Landslides*, vol. 1, chap. Modeling time dependent aerial slope stability, pp. 23–36, Millpress, Balkema, London, 2004.
- 810 Sirangelo, B. and Versace, P.: A real time forecasting model for landslides triggered by rainfall, *Meccanica*, 31, 73–85, 1996.
- Srivastava, R. and Yeh, T. C. J.: Analytical solutions for one dimensional, transient infiltration toward the water table in homogeneous and layered soils, *Water Resources Research*, 27, 753–762, 1991.
- Staley, D. M., Kean, J. W., Cannon, S. H., Schmidt, K. M., and Laber, J. L.: Objective definition of rainfall intensity–duration thresholds for the initiation of post-fire debris flows in southern California, *Landslides*, 10, 547–562, doi:<http://dx.doi.org/10.1007/s10346-012-0341-9>, 2013.
- 815 Stephenson, D.: Use of the 'odds ratio' for diagnosing forecast skill, *Weather and Forecasting*, 15, 221–232, 2000.
- Takara, K. and Apip Bagiawan, A.: Study on early warning system for debris flow and landslide in the Citarum River Basin, Indonesia, in: *Proceedings of The First World Landslide Forum*, pp. 573–576, Tokyo, 2009.
- 820 Tarolli, P., Borga, M., Chang, K.-T., and Chiang, S.-H.: Modeling shallow landsliding susceptibility by incorporating heavy rainfall statistical properties, *Geomorphology*, 133, 199–211, 2011.
- Taylor, D.: *Fundamentals of Soil Mechanics*, John Wiley, New York, 1948.
- Tiranti, D. and Rabuffetti, D.: Estimation of rainfall thresholds triggering shallow landslides for an operational warning system implementation, *Landslides*, 7, 471–481, 2010.
- 825 Waymire, E. and Gupta, V. K.: The mathematical structure of rainfall representations: 1. A review of the stochastic rainfall models, *Water Resources Research*, 17, 1261–1272, 1981a.
- Waymire, E. and Gupta, V. K.: The mathematical structure of rainfall representations: 2. A review of the theory of point processes, *Water Resources Research*, 17, 1273–1285, 1981b.
- 830 Waymire, E. and Gupta, V. K.: The mathematical structure of rainfall representations: 3. Some applications of the point process theory to rainfall processes, *Water Resources Research*, 17, 1287–1294, 1981c.
- Wieczorek, G. F., Morgan, B. A., and Campbell, R. H.: Debris-flow hazards in the Blue Ridge of central Virginia, *Environ. Eng. Geol.*, 6, 3–23, 2000.

- Wilks, D.: Statistical Methods in the Atmospheric Sciences, 3rd Edition, Mededelingen en verhandelingen,
835 2011.
- Wu, W. and Sidle, R. C.: A Distributed Slope Stability Model for Steep Forested Basins, Water Resources
Research, 31, 2097–2110, 1995.

Table 1. Confusion matrix for the possible success and failure cases of a warning process based on a landslide triggering threshold $I = f(D)$.

		Actual	
		Landslide (P)	No landslide (N)
Predicted	Landslide: $I \geq f(D)$	True Positive, TP	False positive, FP
	No Landslide: $I < f(D)$	False Negative, FN	True Negative, TN

Table 2. Parameters of the NSRP rainfall model resulting from calibration on Fiumedinisi rainfall data, for the four homogeneous rainy seasons (the Weibull shape-parameter has been fixed to $b = 0.6$).

Parameter	Jan, Feb, Mar	Sep, Oct	Nov	Dec
λ [h^{-1}]	0.002295	0.021195	0.001485	0.003185
ν	44.28	1.57	42.41	42.61
β [h^{-1}]	0.010161	2.1179	0.0059551	0.0098760
η [h^{-1}]	0.72113	0.83999	0.94053	0.67735
ξ [$\text{h}^b \text{mm}^{-b}$]	1.13441	0.46260	0.69261	1.03521

Table 3. Soil properties considered for application of the model to the Peloritani Mountains case study-area.

ϕ' [°]	c' [kPa]	γ_s [N m^{-3}]	θ_s [–]	θ_r [–]	K_s [m s^{-1}]	D_0 [$\text{m}^2 \text{s}^{-1}$]	α [m^{-1}]	d_{LZ} [m]	δ [°]	ζ_{CR} [–]	c_d [–]
37	5.7	19 000	0.35	0.045	2×10^{-5}	5×10^{-5}	3.5	2	40	0.4645	0.1

Table 4. Varied soil properties considered for sensitivity analysis.

K_s [m/s]	D_0 [$\text{m}^2 \text{s}^{-1}$]	c_d [–]	d_{LZ} [m]	$\tau_M(A/B = 10 \text{ m})$ [days]
1×10^{-5} (36 mm/h)	2.5×10^{-5}	0.1	1, 1.5, 2	5.5
2×10^{-5} (72 mm/h)	5×10^{-5}	0.05, 0.1, 0.2	1, 1.5, 2	2.7
3×10^{-5} (108 mm/h)	7.5×10^{-5}	0.1	1, 1.5, 2	1.8

Table 5. ROC-based indices for the derived best power-law stochastic-input physically-based thresholds (S) and comparison with constant-intensity input physically based ones (C).

$\frac{A}{B}$ [m]		a_1 [mm h ⁻¹]	TP	TN	FN	FP	P_0	TPR	FPR	TSS
0 ($\psi_0 = 0$)	S	101.49	81	19 558	0	187	0	1.000	0.009	0.991
	C	–	52	19 744	29	1	0	0.642	0.000	0.642
10	S	71.52	104	19 037	11	672	2	0.904	0.034	0.870
	C	–	52	19 708	63	1	2	0.452	0.000	0.452
20	S	42.95	164	17 131	26	2488	17	0.863	0.127	0.736
	C	–	52	19 618	138	1	17	0.274	0.000	0.274

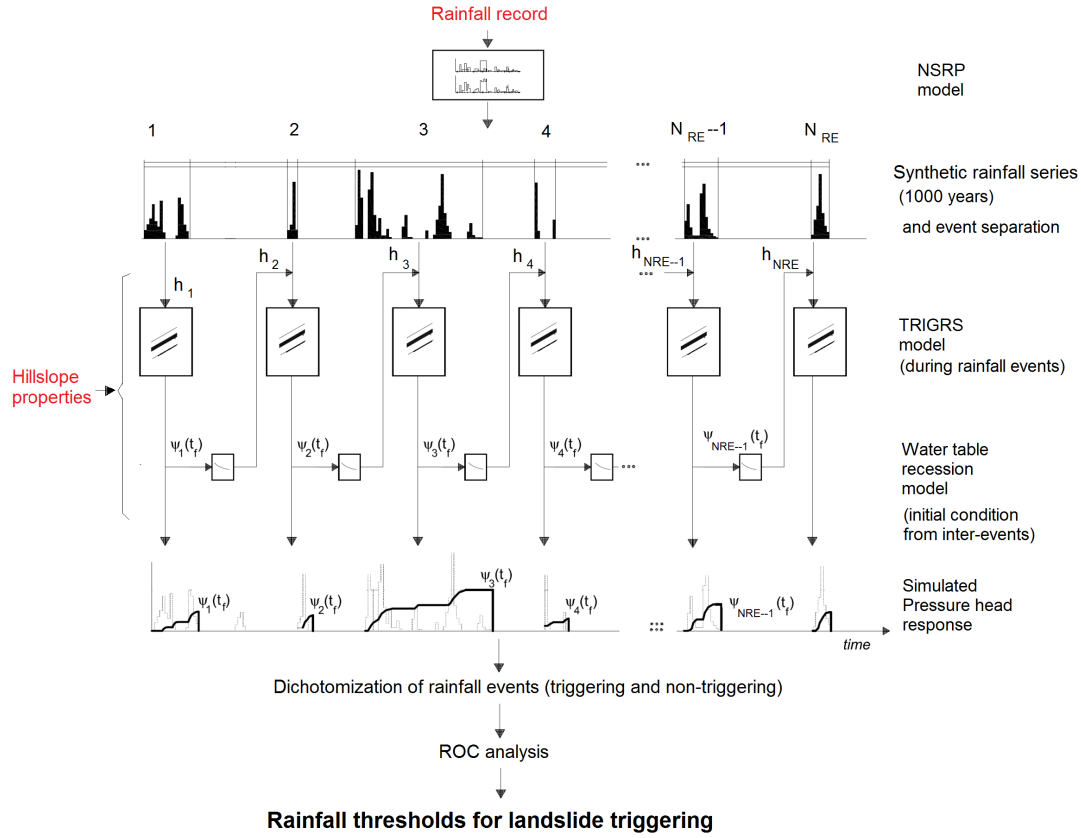


Fig. 1. Scheme of the Monte Carlo methodology for derivation of landslide triggering thresholds. Text in red indicates briefly the input required, while text in black indicates models or modeling phases.

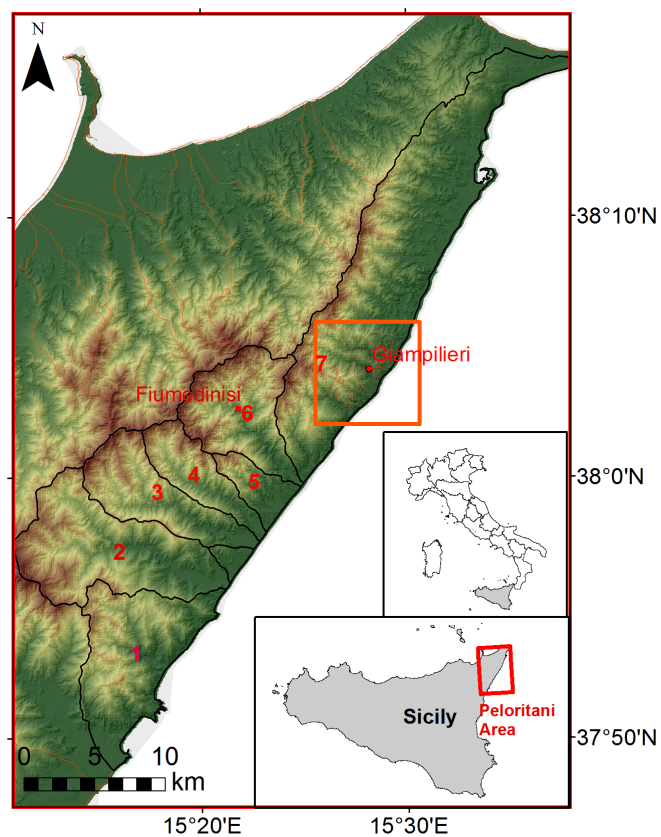


Fig. 2. Map showing the location of landslide-prone study area of Peloritani Mountains, Italy. The area may be subdivided into seven catchments as highlighted in the map. Relief is shown by a 5×5 m resolution Digital Terrain Model based on LIDAR measurements in the year 2007. Location of Fiumedinisi rain gauge is shown as well. The inner box contains the area surrounding the Giampileri municipality, where a widespread rapidly-moving landslide event killed 37 people on 1 October 2009.

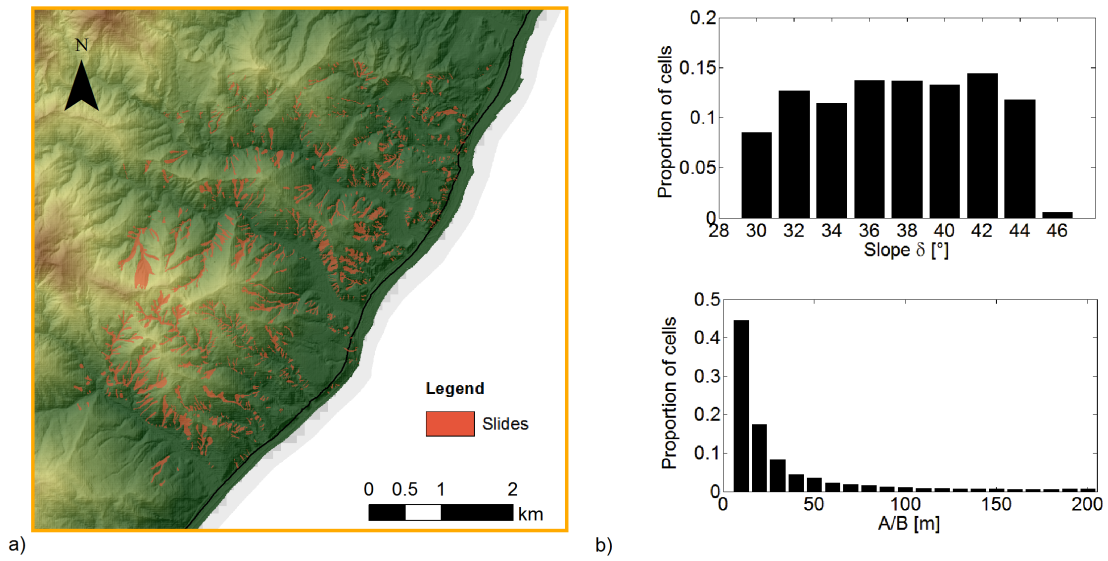


Fig. 3. (a) Enlargement of inner box of the map of Fig. 2 showing slides occurred on 1 October 2009. Polygons were derived from slide (red) areas reported in map of Civil Protection Department of the Sicilian Region (source: http://www.regione.sicilia.it/presidenza/protezionecivile/documenti/rischi/r_idrogeologico/documenti/20091001_CartaDissesti.jpg). 643 slides, occupying a total area of 2.30 km^2 , are present in the map **(b)** Statistical distribution, within the slide areas, of slope δ and of upslope specific contributing area A/B .

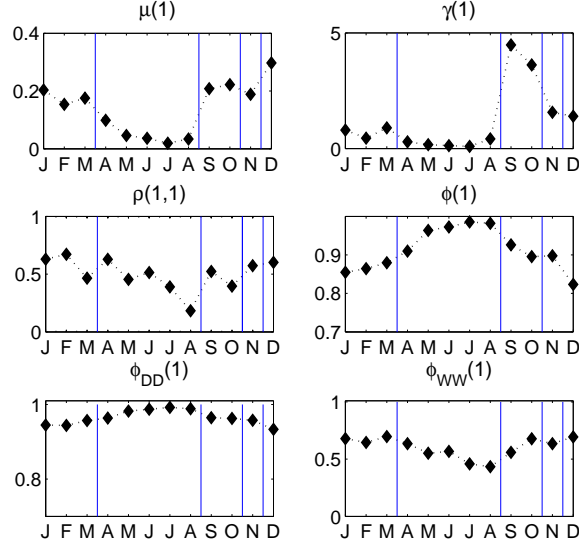


Fig. 4. Moments for each month for Fiumedinisi SIAS hourly rainfall data. In particular μ denotes the mean, γ the variance, $\rho(1, 1)$ the linear autocorrelation coefficient at lag = 1, ϕ the probability of a dry interval, ϕ_{DD} the probability that a given interval is dry after another dry one, ϕ_{WW} the probability that a given interval is wet after another wet one. These moments have been used in calibration of the NSRP model via the method of moments. It can be seen that there are low differences of most of the moments within the following groups of months: Sept-Oct, Nov, Dec, Jan-March, April, May-August. A separate set of NSRP model parameters was calibrated for each of the first four of these seasons, while the period April-August has been neglected from the successive analyses because precipitation rates are so low that it is very unlikely that a triggering event occurs in such period.

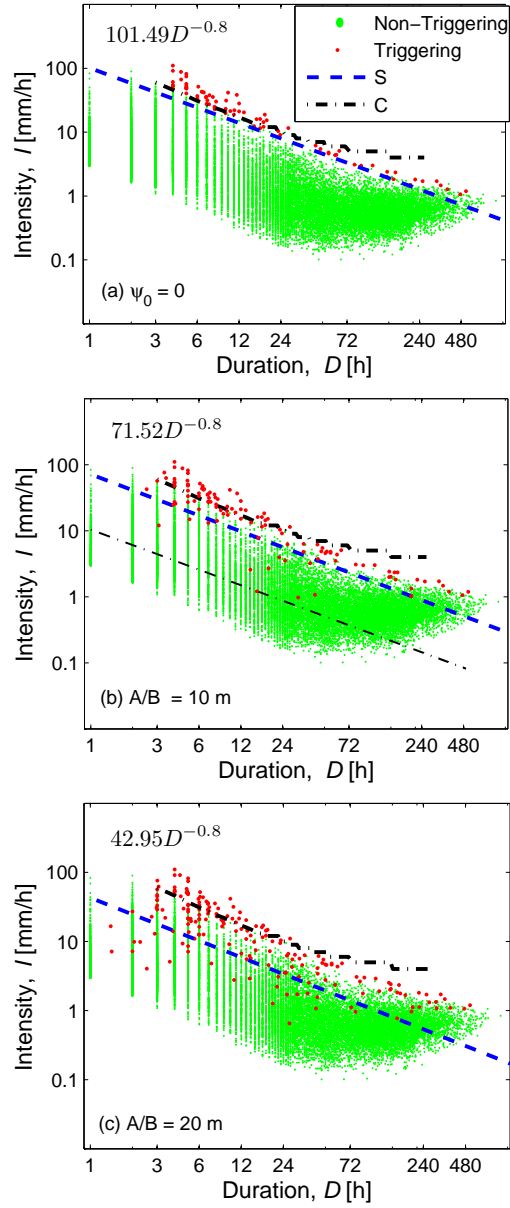


Fig. 5. Derivation of thresholds from ROC optimization of Monte Carlo simulations. Red points represent triggering simulated rainfall, while green ones represent the non-triggering. Best power-law stochastic-input physically-based thresholds (S) are derived by maximization of the TSS ROC-based index. The constant-intensity input physically based threshold (C) is determined considering the response to uniform hyetographs and water table initially at the basal boundary. **(a)** zero memory case $\psi_0 = 0$, **(b)** $A/B = 10$ m (Threshold derived by Gariano et al. (2013) for Sicily is shown as well (thin dotted line)) for comparison with the one derived), and **(c)** $A/B = 20$ m.

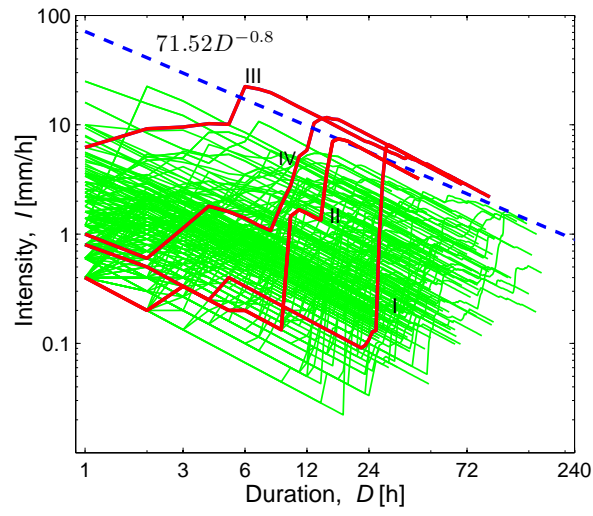


Fig. 6. Validation of threshold-derivation procedure with observed rainfall events. Red lines indicate mean intensity $I(D) = W(D)/D$ time histories that exceed the derived threshold. Green lines represent observed events that do not exceed the threshold. Threshold is exceeded for all and only the four dates in which landslides occurred in the Peloritani area: (I) 15 September 2006, (II) 25 October 2007, (III) 24 September 2009 and (IV) 1 October 2009.

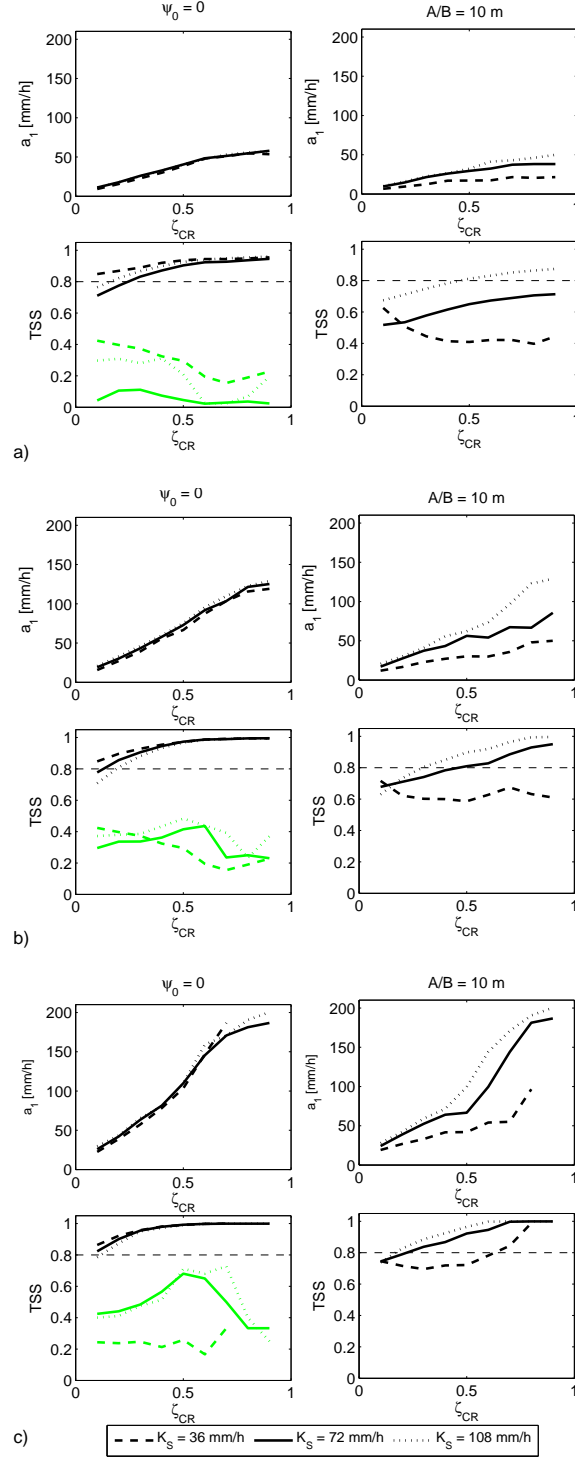


Fig. 7. Sensitivity of triggering thresholds and of the relative performances to hydraulic conductivity K_S (cf. Tab. 4). Plots show, for the two cases of zero memory ($\psi_0 = 0$) and $A/B = 10$ m, how the a_1 power-law coefficient of optimized stochastic-input physically-based thresholds and relative TSS performance index vary with the critical wetness ratio ζ_{CR} . Performances of the constant-intensity physically-based thresholds are shown as well (in green). Different soil depths are considered: **(a)** $d_{LZ} = 1$ m, **(b)** $d_{LZ} = 1.5$ m, and **(c)** $d_{LZ} = 2$ m.

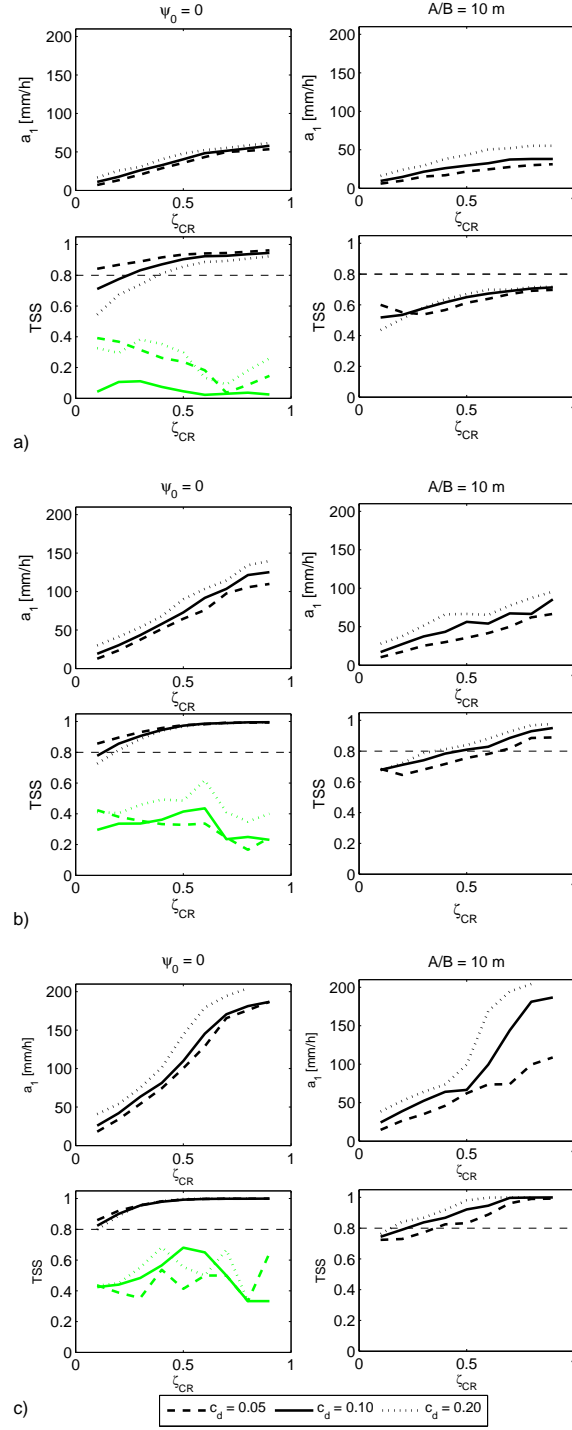


Fig. 8. Sensitivity of triggering thresholds and of the relative performances to the leakage ratio c_d (fractured bedrock) (cf. Tab. 4). Plots show, for the two cases of zero memory ($\psi_0 = 0$) and $A/B = 10$ m, how the a_1 power-law coefficient of optimized stochastic-input physically-based thresholds and relative TSS performance index vary with the critical wetness ratio ζ_{CR} . Performances of the constant-intensity physically-based thresholds are shown as well (in green). Different soil depths are considered: **(a)** $d_{LZ} = 1$ m, **(b)** $d_{LZ} = 1.5$ m, and **(c)** $d_{LZ} = 2$ m.

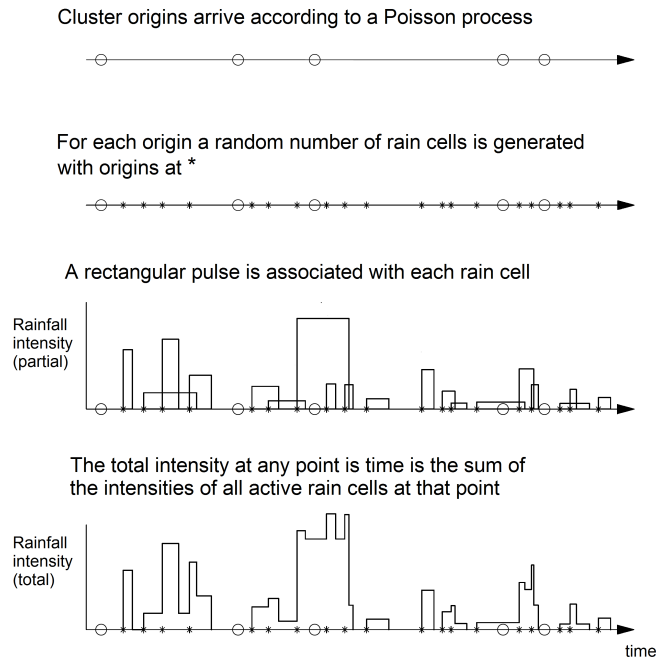


Fig. A.1. Representation of the Neyman–Scott Rectangular Pulses stochastic process for at-site rainfall modeling (adapted from Cowpertwait et al. (1996)).

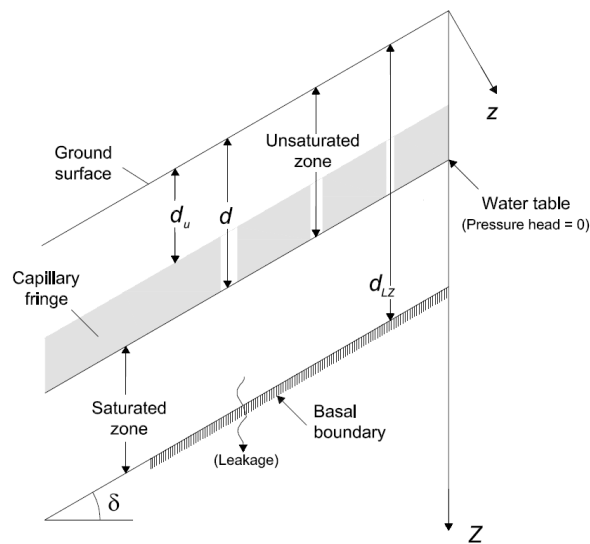


Fig. B.1. Soil 1-D vertical scheme used to model infiltration and slope stability based on the TRIGRS unsaturated model (adapted from Baum et al., 2008).