

# A physical approach on flood risk vulnerability of buildings

**B. Mazzorana<sup>1</sup>, S. Simoni<sup>2</sup>, C. Scherer<sup>3</sup>, B. Gems<sup>4</sup>, S. Fuchs<sup>5</sup>, and M. Keiler<sup>6</sup>**

[1]{Department of Hydraulic Engineering, Autonomous Province of Bolzano, Bolzano, Italy}

[2]{Mountain-eering S.r.l., Bolzano, Italy}

[3]{Obrist & Partner Engineering, Caldaro, Italy}

[4]{Institute for Infrastructure Engineering, University of Innsbruck, Innsbruck, Austria }

[5]{Institute of Mountain Risk Engineering, University of Natural Resources and Life Sciences, Vienna, Austria}

[6]{Institute of Geography, University of Bern, Bern, Switzerland}

Correspondence to: B. Mazzorana (bruno.mazzorana@provinz.bz.it)

## Abstract

The design of efficient hydrological risk mitigation strategies and their subsequent implementation relies on a careful vulnerability analysis of the elements exposed. Recently, extensive research efforts were undertaken to develop and refine empirical relationships linking the structural vulnerability of buildings to the impact forces of the hazard processes. These empirical vulnerability functions allow estimating the expected direct losses as a result of the hazard scenario based on spatially explicit representation of the process patterns and the elements at risk classified into defined typological categories. However, due to the underlying empiricism of such vulnerability functions, the physics of the damage generating mechanisms for a well-defined element at risk with its peculiar geometry and structural characteristics remain unveiled, and, as such, the applicability of the empirical approach for planning hazard-proof residential buildings is limited. Therefore, we propose a conceptual assessment scheme to close this gap. This assessment scheme encompasses distinct analytical steps: modelling (a) the process intensity, (b) the impact on the element at risk exposed and (c) the physical response of the building envelope. Furthermore, these results provide the input data for the subsequent damage evaluation and economic damage valuation. This dynamic assessment

supports all relevant planning activities with respect to a minimisation of losses, and can be implemented in the operational risk assessment procedure.

## **1 Introduction**

In European mountain regions, losses due to mountain hazards are still considerable high even if there is an ongoing debate on the overall increasing or decreasing trend (Fuchs 2009; Gall et al. 2009). The concept of risk had been introduced in order to manage the resulting challenges, with respect to temporal and spatial dynamics of social (de Vries 2007, Cutter and Finch, 2008) and engineering dimensions (Kienholz et al., 2004; Fuchs et al. 2013). Despite a relatively long tradition of the application of the risk concept in the European Alps (Kienholz et al. 2004), there still is a particular gap in the assessment of vulnerability (Fuchs et al. 2012a).

Scholars with various scientific backgrounds have a different understanding on the definition of vulnerability (Fuchs 2009; Hufschmidt 2011). Social scientists often focus on the characteristics of people or communities in terms of their capacity to anticipate, cope with, resist, and recover from the impact of a hazard (Wisner 2004). In contrast, engineers and natural scientists define vulnerability as the degree of loss to an element at risk as a result of the impact of a hazard with a given frequency and magnitude (Fell et al. 2008), regularly assessed based on empirical data or modelled scenarios. As a consequence, there is neither a common definition for vulnerability nor a standardised methodology for an integrative vulnerability assessment available (Fuchs et al. 2007; Papathoma-Köhle et al. 2011), the only available concepts remain fragmentary with respect to a practical implementation (Birkmann et al. 2013). However, the different dimensions of vulnerability such as physical (structural), social, economic, or institutional vulnerability, although maybe differently defined, are connected to each other. Structural or physical vulnerability is hereby seen as a prerequisite or starting point, resulting in physical loss and may influence the other dimensions of vulnerability (Fuchs 2009; Papathoma-Köhle et al. 2011; Kappes et al. 2012a, b).

Recently, the physical vulnerability of buildings exposed to torrent processes has been studied comprehensively in different mountain regions of Europe facing both the aim to compute vulnerability functions for use in operational risk assessment (Fuchs et al. 2007; Papathoma-Köhle et al. 2012; Totschnig and Fuchs 2013) and to implement local structural mitigation measures (Holub and Fuchs 2008; Holub et al. 2012, Hawkesbury-Nepean Floodplain

Management Steering Committee, 2006). Despite these efforts, considerable research gaps still remain open: while the first studies combined empirical loss data with information on one process parameter (deposition height) resulting in damage-loss functions, the latter studies were solely focused from a practical perspective on the reduction of structural vulnerability of individual buildings. Quan Luna et al. (2011) added a further step: Based on intensity information derived by numerical modelling back-analyzing the Selvetta debris flow event, they presented vulnerability curves for the following independent variables: flow height [m], kinematic viscosity [m<sup>2</sup>/s] and impact pressure [kPa].

The empirical vulnerability functions allow for an estimation of expected direct losses as a result of considered hazard scenarios which are based on a spatially explicit representation of process patterns and elements at risk categorized into defined typological classes. However, due to the underlying empiricism of such vulnerability functions the transferability to other building types is limited (Papathoma-Köhle et al. 2011). The physics of the damage generating mechanisms remains unveiled and restricts the applicability of the empirical approach for planning hazard-adapted buildings. In fact, as outlined by Fuchs (2009) and confirmed by Totschnig and Fuchs (2013), the analysis of empirical data from torrent processes has shown that the vulnerability of buildings affected by medium hazard intensities (e.g. 1.00-1.50 m deposition height for torrent processes) critically depends on the patterns of material intrusion through openings such as doors, wells and windows. This points out that in addition to the intensity of the physical impact and the structural response of the considered element at risk also the geometry characterizing the individual building has to be carefully considered in vulnerability analyses (Totschnig et al. 2011; Jakob et al. 2012; Jakob 2013).

Moreover, previous studies have shown that spatial patterns in vulnerability of buildings exposed to torrent processes exist (Fuchs et al. 2012b) which cannot be satisfactorily explained only by the spatial and temporal process dynamics on the torrential fans. Therefore, a deeper insight into the mechanisms causing losses is necessary as a basis of any subsequent engineering design of feasible and economically efficient risk mitigation strategies (Mazzorana et al. 2012a; Mazzorana and Fuchs 2010; Mazzorana et al. 2012b). Since in Alpine regions – due to an increasing scarceness of funding available – public investments for natural hazard risk mitigation may decrease significantly, envisaged solutions must be convincing, both from a technical and economic viewpoint (Fuchs 2013), and also be sustainable from an ecological perspective. This holds also for mainly private capital

1 investments in terms of local structural protection strategies aiming at reducing the physical  
2 vulnerability of endangered buildings (Holub and Fuchs 2009; Holub et al. 2012; Mazzorana  
3 et al. 2012b).

4 From a purely theoretical perspective rigorous approaches to vulnerability computations for  
5 structures can be derived from physical and numerical analyses of the fluid-structure-soil  
6 interaction with free surface flows. With respect to fluid-structure coupling, Walhorn et al.  
7 (2005) presented a monolithic model for fluid-structure interaction problems involving free  
8 surface using a space-time finite element discretization. They implemented a strong coupling  
9 algorithm and a time adaptable space-time finite element formulation to enforce conservation  
10 of momentum and mechanical energy at the fluid-structure interface. Moreover, they obtained  
11 through a refined level set method an enhanced tracking of the fluid-solid interface. However,  
12 reliable results have been provided so far only for simple geometrical configurations (e.g.  
13 single flexure elements impacted by a fluid flow) and the geomechanical processes have been  
14 neglected. Similar arguments hold for challenges involving the coupling between fluid flow  
15 and soil mechanics. Although front-end solutions for particular case studies have been  
16 obtained, so far there is a particular gap for the specific domain of mountain hazard risk  
17 management.

18 Therefore, we propose to treat the complex fluid-structure-soil interaction by decoupling it  
19 considering the following distinct analytical steps:

20 (a) For a comprehensive physically based concept of vulnerability evaluation a very detailed  
21 representation of the impacting hazard process is necessary both with respect to space and  
22 time.

23 (b) To quantify the resulting impacts on the building envelope and to detect possible liquid  
24 and solid material intrusion pathways, the geometrical structure of buildings has to be  
25 analysed with respect to the time-varying flow field of the impacting process and, if geo-  
26 mechanical actions may interfere, with respect to the residual bearing capacity of the soil  
27 layers the construction is situated.

28 (c) Once quantified the time-varying impact spectrum, the physical response (i.e. resistance)  
29 of the building structure has to be evaluated, mainly from a structural analysis perspective  
30 (statics, elastostatics and dynamics) and from a building physics viewpoint. The analytical  
31 step (c) should result in a comparison of the stresses and strains on structural elements  
32 focusing on admissible values providing the short term effects for their structural integrity.

Moreover, the physical processes taking place on and through the building envelope which may exhibit long-lasting consequences (e.g. material intrusion and moisture transfer and accumulation, wetting and drying of the outer and inner layers of the building) should be described. The basic product of this analytic step is the damage susceptibility profile containing the results of a set of ultimate limit state, serviceability limit state, durability limit state and no material intrusion verifications. Furthermore, these results provide the input data for the subsequent damage evaluation and economic damage valuation.

Subsequently, based upon the derived response – in terms of a damage susceptibility profile of the considered building structure – in a damage accounting step scenarios reflecting the post-impact status of the considered residential building (including the consequences in terms of damage for the electrical, heating and hydraulic system as well as other values) have to be considered. For potential damage analysis Mazzorana and Fuchs (2010) developed a structured procedure to elicit and integrate expert knowledge. Papathoma-Köhle et al. (2012) provides an approach for economic damage estimation and Gallerani et al. (2011) discuss the most probable reinstatement value to restore the full functionalities of the original building. In Figure 1 the steps of a physically based assessment procedure are shown in a workflow.

Following the workflow presented in Figure 1 our contribution in this paper is directed at unveiling the sequences of significant loss generation mechanisms, both methodologically and computationally. We will derive simplified computational schemes to perform structural analyses for specific impact spectrums (e.g. negligible geo-mechanical actions) and check whether potential material intrusion into the element at risk might take place. Finally we will discuss the added value of the presented methodological approach for the planning of both functionally and economically efficient local structural measures as a complement to conventional mitigation strategies. By evaluating the potential damages, the scope of application of vulnerability assessments is expanded beyond its classical role as a decision-support tool and is closely linked to the core of the planning process.

## **2 Method**

### **2.1 Overview**

In this section we address in detail the first three steps of the necessary five analytic steps to accurately assess the physical vulnerability of the built environment, namely:

(a) Process Modelling, which leads to a spatially explicit and time-varying quantification of the process related primitive variables expressing its intensities;

(b) Impact Modelling, which leads to the time-varying representation of the actions and effects the building structure is subjected to;

(c) Structural and Physical Response Modelling, which consists in a verification of a well-defined set of limit states (i.e. ultimate, serviceability limit states) as well as the verification of non-intrusion conditions for the liquid and solid process volumes.

The remaining two steps, damage modelling and the economic loss valuation, have been extensively covered e.g. in Mazzorana et al. (2012b, c; 2013).

A prerequisite for the above listed methodological steps is to define for each considered element at risk a suitable control volume and convenient control sections where the process intensities and magnitudes have to be traduced into defined loading configurations (i.e. actions). Hence, we define a control volume of minimum extent of parallelepiped form entirely containing the considered element at risk (compare Figure 2).

To account for geomechanics, it is necessary to define additional control sections extending beyond the previously defined control volume. This is done by encompassing the building and the entire elevation profile and extending it to the stream cross sections subjected to relevant incision processes (compare Figure 2). Taking a local coordinate system  $x', y', z'$  for the considered element at risk,  $p = 1, \dots, P$  control sections  $A_p$  are identified by the vertical planes of the parallelepiped control volume. The control sections containing the elevation profiles for geo-mechanical analysis are variably oriented vertical planes symbolized by  $A_{\vec{r}, z'}$  (where the intersection between  $\vec{r}$  and the base area of the building is a nonempty set).

## 2.2 Process modelling

### 2.2.1 Fluid flow process

Relevant fluid flow processes in this context are floods, fluvial sediment transport, debris floods and debris flows (Pierson and Costa 1987; Slaymaker 1988). Moreover, large wood (LW) is increasingly recognized as one of the main problem for risk assessment in Alpine streams (Mazzorana et al. 2011), mostly because of the LW potential to: (1) trigger more severe flood inundations due to dam-break surges downstream of temporary wood dams (Mao

1 and Comiti 2010); (2) clog bridges and narrow sections (Diehl 1997; Comiti et al. 2008); (3)  
2 increase the destructive power of debris flows (Ishikawa 1990).

3 As outlined by Armanini et al. (2009) debris flows can be interpreted as rapid massive  
4 sediment motions that occur in relatively small and steep catchments. Large amounts of  
5 sediment can become unstable in particular geomorphological situations and under extreme  
6 meteorological conditions (intense rainfalls) and flow by gravity as a dense mixture of water  
7 and sediments (Iverson 1997).

8 Mathematically, debris flows can be described as a two-phase fluid composed by an  
9 interstitial liquid (water) and by granular matter (sediments) that constitutes the solid phase  
10 and has proper rheological properties (Rosatti et al. 2013, Pitman and Le 2005). In the  
11 particular, accurate computational modelling approaches have been recently proposed either  
12 in a 1D or in a 2D setting (e.g. Rosatti and Fraccarollo 2006; Rosatti et al. 2013), considering  
13 the very relevant case of flows of water-sediments-mixture without cohesive properties and,  
14 hence, with negligible fractions of clay and silt. Whereas plastic stresses may play a  
15 significant role due to significant fractions of clay and silt additional research efforts are still  
16 needed to computationally implement the most advanced rheological findings.

17 2D modelling approaches are required for process representation accurate in space and time  
18 for allowing a technically sound and physically based vulnerability assessment of endangered  
19 buildings. Prior to this analytic step, a detailed process routing along the stream network  
20 where the sediment volumes are mobilized and along which the water and sediment fluxes are  
21 transferred is necessary (Hübl et al. 2003). With respect to the preliminary process routing  
22 step, a comprehensive methodology has recently been proposed by Mazzorana et al. (2012a).  
23 Endowed with reliable process scenarios in terms of both liquid and solid discharges at  
24 critical nodes (e.g. apexes of alluvial fans), the subsequent step consists in representing the  
25 process propagation in space and time in those areas where the assets at risk are located.  
26 Regarding the debris flow simulation process in the endangered area, the two-dimensional  
27 simulation model over mobile bed – TRENT 2D – developed by Armanini et al. (2009) and  
28 substantially enhanced by Rosatti et al. (2013) has been applied. In this model the system of  
29 partial differential equations derived from the mass and momentum conservation principles is  
30 hyperbolic and characterized by a non-conservative nature. The details about the  
31 mathematical model and the associated finite-volume, explicit Godunov-type numerical  
32 approach are documented in Rosatti et al. (2013). Applying this approach for each cell of the

computational domain and for each time step values for the transposed vector of primitive physical variables,  $\mathbf{W}$ , can be extracted by:

As previously stated  $\mathbf{W} = (h_{DF}, u, v, z_b)^T$  is the transposed vector of primitive physical variables, where  $h_{DF}$  is the flow depth,  $u, v$  are the depth-averaged velocities in  $x$  and  $y$  direction respectively, and  $z_b = h_D + h_s$  is the elevation of the mobile bed, which consists of the thickness of the pre-existing soil layer  $h_s$  above a datum and the thickness of the deposit  $h_D$ . Rigorously, the thickness of the pre-existing soil layer can diminish if erosion of the soil stratum takes place.

Since the subsequent analytic step is the quantification of the impacts on the endangered building under consideration, first the values of the primitive variables for the computational cells have to be calculated for each cell along the above defined control sections for each time step within the event duration, namely:  $\mathbf{W}_{A_p}(t_k)$ , with  $k = 1, \dots, K$  where  $K$  is the total number of considered time steps. Second, the evolution of the bed elevation profiles  $\mathbf{Z} = (z_{b,1}, \dots, z_{b,R})^T$  in the vertical planes  $A_{\vec{r},z}$ , which identify the cross sections for geo-technical analysis, (where the subscript  $r = 1, \dots, R$  identifies the computational cells along  $\vec{r}$ ) have to be computed.

## 2.2.2 Geomechanical process

The 2D soil-structure models for each  $A_{\vec{r},z}$  might be represented differently depending on the chosen geomechanical analysis approach. In more simple cases of slope stability computations the slip circle method with its slice-based discretization is commonly used, whereas in more complex cases modern stability computation techniques are based on a finite element analysis with peculiar finite element discretization approaches (Plaxis Manual 2011).

## 2.3 Impact modelling

### 2.3.1 Preliminary considerations

According to Figure 1 and following the digressions of the previous subsection we characterize the impact from a fluid dynamics perspective, from a building physics point of view and from a geomechanical perspective. Concerning the impacts deriving from fluid



dynamic actions we first set the analytic focus on determining the loads on the envelope of the building and in a second stage, if material intrusion is relevant, additional loading configurations have to be considered.

As a preliminary step the structural and geometrical idealizations have to be defined:

(a) For the purposes of structural analysis the considered building can be idealized in a variety of ways depending on the necessary level of sophistication required to represent its structural and physical characteristics. As a general procedure, suitable for different degrees of complexity, we suggest the application of matrix methods and finite element methods, each one endowed with particular discretization approaches (e.g. Steinke 2012).

(b) For the purposes of material intrusion analysis and for building physics considerations we ideally approach the envelope of the building in clockwise sense along a coordinate  $l$ , with  $0 \leq l \leq L$ , traced along the perimeter of the base area of the building, as shown in Figure 3. The openings are enumerated progressively with  $h$ ,  $h = 1, \dots, H$  and their geometry is tracked with the functions,  $U(l)$  and  $D(l)$ , identifying their upper and lower cord between  $L_h$  and  $R_h$  along the coordinate  $l$ , respectively. The maximum elevation of the envelope of the building along  $l$  is given by  $E(l)$ .

### 2.3.2 Fluid flow impacts relevant for structural and physical response analysis

The main aim is the representation of the direct static and dynamic loadings (actions) exerted by the debris flow impact on the building's envelope in terms of pressure distributions (pressures in  $[N/m^2]$ ). Considering a vertical wall impacted by a debris flow it has to be determined whether the debris flow surge approaches the element at risk as confined or unconfined flow, and distinct impact mechanisms have to be considered.

In case of an unconfined flow behaviour which can be considered as an external flow with respect to the element at risk, the assumed dynamic pressure exerted on the wall is (Holub et al. 2012):

$$q_p = \frac{1}{2} \cdot C_f \cdot \rho_{df} \cdot v^2 \quad (1)$$

where  $C_f$  is the drag coefficient which depends on the shape of the obstacle and the flow characteristics of the debris flow mixture,  $\rho_{df}$  is the density of the debris flow mixture and  $v$

is the depth-averaged velocity component orthogonal to the projected area of the obstacle on a plane normal to the flow direction. In case of almost confined flow situations which typically occur if incised flow paths develop on the debris cone and the element at risk is located along such a flow path, Holub et al. (2012) suggest the following expression to account for the dynamic pressure:

$$q_p = \rho_{df} \cdot v^2 \quad (2)$$

Regarding the special case of totally confined debris flow impacts on a vertical wall, we refer to the debris flow impact theory of Armanini et al. (2011). Whereas the latter impact case is typical for check dams impacted by almost canalised debris flows, it is rather the exception on alluvial fans where debris flows propagate and deposit. Hence, acknowledging that further experimental evidence is needed to refine the debris flow impact assessments for the former flow cases, we adopt expressions (1) or (2) to assess the dynamic debris flow impact pressure.

We assume that the pressure distribution on the building envelope is caused by the impact of a debris flow front, accounting for both dynamic and static components, symbolized with DFS and DFD, passing over saturated strata of debris flow deposits (e.g. aggradations formed during the event duration preceding the main surge) and the soil layer and which exert both earth and hydrostatic pressure on the building envelope (E1, E2 and W, compare Figure 4).

Taking the process model results as a basis, we can deduce for each control section  $A_p$  the structure of the pressure distribution for each computational time step  $t_k$  as follows:

Indicating with  $h_{DF}$ ,  $h_D$ ,  $h_S$  the flow depth of the front, the overall thickness of the deposits and of the soil stratum above the building basement level, and adopting the notations  $p_{DFT}$ ,  $p_{DFD}$ ,  $p_{DFS}$ ,  $p_{S'D'}$ ,  $p_{S,S}$ , and  $p_W$  to identify the total debris flow pressure, the constant value of the dynamic debris flow pressure, the static debris flow pressure, the deposit earth pressure at  $\eta = h_S + h_D$  (in consideration of the weight of the overflowing surge), the soil earth pressure at  $\eta = 0$  and the hydrostatic pressure at  $\eta = 0$  (building basement level), the pressure distribution  $p(\eta)$  can be formalized as follows:

$$p(\eta) = \begin{cases} p_{SS} - \frac{p_{SS} - p_{S'D'}}{h_S + h_D} \cdot \eta + p_W - \frac{p_W}{h_S + h_D + h_{DF}} \cdot \eta & \text{for } 0 \leq \eta < h_S + h_D \\ p_{DFT} - \frac{p_{DFS}}{h_{DF}} \cdot \eta + \frac{p_{DFS}}{h_{DF}} \cdot (h_S + h_D) & \text{for } h_S + h_D \leq \eta < h_S + h_D + h_{DF} \end{cases} \quad (3)$$

$$1 \quad \text{with} \quad p_{DFD} = \frac{1}{2} \cdot C_f \cdot \rho_{df} \cdot v^2, \quad p_{DFS} = \rho_{df} \cdot g \cdot h_{DF}, \quad p_{DFT} = \rho_{df} \cdot g \cdot h_{DF} + \frac{1}{2} \cdot C_f \cdot \rho_{df} \cdot v^2,$$

$$2 \quad p_{S'D'} = \gamma_{DF} \cdot h_{DF} \cdot K_{ahD}, \quad p_{SS} = p_{S'D'} + (\gamma_S - \gamma_W) \cdot (h_D + h_S) \cdot K_{ahD}, \text{ and } p_W = \gamma_W \cdot (h_D + h_S + h_{DF}).$$

3 In Eq. (3),  $K_{ahD}$  is the active earth pressure coefficients of the deposition stratum (including  
4 the pre-existing soil layer),  $g$  is the acceleration of gravity,  $\rho_{df}$  and  $\gamma_{df}$  are the density and  
5 the specific weight of the debris flow,  $v$  is the local velocity of the debris flow evaluated in  
6 normal and inwardly oriented direction with respect to the perimeter of the considered  
7 building.

8 For the computation of the area of the openings subjected to material intrusion we evaluate  
9 for each computational time point  $t_k$  with reference to the definition sketch shown in Figure  
10 3:

$$11 \quad Diff(l, t_k) = H(l, t_k) - D_h(l) \quad \text{if} \quad D_h(l) < H(l, t_k) \leq U_h(l); \quad Diff(l, t_k) = U(l) - D_h(l) \quad \text{if} \quad H(l, t_k) > U_h(l) \quad \text{and} \\ 12 \quad Diff(l, t_k) = 0 \quad \text{if} \quad H(l, t_k) \leq D_h(l), \text{ where } H(l, t_k) = h_{DF}(l, t_k) + z_b(l, t_k).$$

13 The wetted area of the considered opening  $h$  is therefore:

$$14 \quad O_h(t_k) = \int_{L_h}^{R_h} Diff(l, t_k) dl \quad (4)$$

15 The total area available for potential material intrusion is given by the sum of the wetted parts  
16 of all openings  $h = 1, \dots, H$ :

$$17 \quad TO_H(t_k) = \sum_{h=1}^H O_h(t_k) \quad (5)$$

18 To evaluate the area of wetted envelope of the building we proceed analogously, by  
19 computing first:

$$20 \quad DIFF(l, t_k) = H(l, t_k) \quad \text{if} \quad H(l, t_k) \leq E(l), \text{ where } E(l) \text{ is the maximum elevation of the envelope at } l \\ 21 \quad \text{and } DIFF(l, t_k) = E(l) \quad \text{if} \quad H(l, t_k) > E(l).$$

22 The wetted area of the building envelope is therefore:

$$23 \quad WE(t_k) = \left[ \int_0^L DIFF(l, t_k) dl \right] - TO_H(t_k) \quad (6)$$

24

### 2.3.3 Geomechanical impacts relevant for structural response analysis

Depending on the results of the analysis of the geo-mechanical processes (compare subsection 2.2.2) the associated impacts relevant for structural response analysis are modelled by assuming a lowered bearing capacity of the soil supporting the building.

## 2.4 Structural and physical response analysis

The set of norms EN 1990 (Eurocode 0: Basis of Structural Design), EN 1991 (Eurocode 1: Actions on Structures) and the specific design codes EN 1992 to EN 1999 inspired our concept of structural response analysis and the physical response analysis concept is analogously set up.

In particular EN 1990 is based on the limit state concept used in conjunction with the partial safety factor method. In this context limit states are intended as states beyond which the structure no longer fulfils relevant design criteria. Two different types of limit states are considered, namely ultimate limit state and serviceability limit state (compare Gulvanessian, 2009). As stated in EN 1990 it has to be verified, based on the application of load models and structural models, that no limit state is exceeded when the design values for actions, material properties and geometrical data are used. Here (a) the ultimate limit states – ULS – and (b) the serviceability limit states – SLS – are briefly illustrated in their essential aspects.

(a) Ultimate Limit States – ULS: The exceeding of these limit states may result in a structural collapse or other forms of structural failures. They are related to the safety of people and/or the safety of the structure. In this context EN 1990 prescribes the following set of verifications:

- ECU: Loss of static equilibrium of the entire structure or of specific parts, all considered as rigid bodies. In this case small deviation of the value and the spatial distribution of the considered action type (e.g. dead weight of the structural parts) are relevant, whereas the strength of construction materials or the building ground are of no influence;
- STR: Failure or excessive deformation of the structure or its parts including the foundation, piles. Here the bearing capacity and the strength of materials are relevant;
- GEO: Failure or excessive deformation of the building ground, whereas the bearing capacity of the soil (or rock) is decisive;

- FAT: Failure of the structure as a consequence of fatigue.

All the above reported verifications consist in a comparison between the design values for the effects of the actions on the building of interest and the design values for the corresponding resistances, namely:

- ECU:  $E_{d,dst} \leq R_{d,stab}$  (7)

where  $E_{d,dst}$  is the design value of the effects of the destabilizing actions,  $R_{d,stab}$  is the design value of the effects of the stabilizing actions,

- STR or GEO:  $E_d \leq R_d$  (8)

where  $E_d$  is the design value of the effects of actions and  $R_d$  is the design value of the corresponding resistances.

This verification approach is based on the partial factor method which incorporates a semi-probabilistic safety concept (compare Feix and Walkner 2012 for details); a representation is provided in Figure 5.

The ultimate limit states have to be verified for particular design situations representing the sets of physical conditions reflecting the real conditions occurring during the construction and use of the structure. The reference design situation for natural hazard impact is that of an accidental situation.

(b) Serviceability Limit States – SLS: These limit states correspond to situation if defined conditions are no longer met and specified service requirements for a structure or a structural element are needed (compare Gulvanessian et al., 2004). The design situations to be considered in this case are structural function of the entire building or of a portion, the comfort of people and the appearance of the building. To assess these limit states the following criteria can be adopted: limitation of strain, deformations, crack widths and oscillations. These types of assessments consist in a comparison between the design values of the effect –  $E_d$  – and of the upper limit of the considered serviceability design criteria –  $C_d$  :

$$E_d \leq C_d \quad (9)$$

For complex structural settings it is convenient to use the finite element method – FEM. For specific details about modelling aspects and algorithms employed, the reader is referred to the well established literature (compare for example Zienkiewicz et al. 2005).

(c) No material intrusion limit state – NLS: -Analogue to the design basics outlined above and in agreement with the methodological approaches outlined in the previous subsections, we add a supplementary limit state, the no intrusion (permeability) limit state. This state is defined as the requirement of that the openings should not be exposed to wetting throughout the event duration and is formalized as follows:

$$TO_H(t_k) = \sum_{h=1}^H O_h(t_k) = 0 \quad \forall t_k \quad (10)$$

The limit states formalized above (compare Eqns. 7 to 10) can be used to define a damage susceptibility profile for the considered building

The damage susceptibility profile contains the verification for the relevant design situations and for all time steps  $t_k$  of the ULS, the SLS and the NLS. Since the relevance of both ULS and NLS is indisputable for the generation of direct damages, these limit states are considered in our analytic setup.

Once the damage susceptibility profile is comprehensively elaborated for the building of interest, including also the ad hoc defined no material intrusion and no wetting damage verification (Eqn. 10), it is necessary to infer the possible profile of damage consequences, whose elaboration is essentially based on expert opinions elicited and structured through appropriated scenario development techniques (compare Mazzorana et al., 2012a). The proposed analytic setup allows for a comprehensive description of the damage response behaviour of the building envelope. Since the flow process through the building is not simulated, an expert based derivation of stochastic event trees might be helpful to hypothesize the full range of possible damage consequences of the considered building. In this case, however, subjective probability assignments are necessary. For a comprehensive treatment of rigorous elicitation methods for subjective probabilities we refer to Wakker (2010). Consequently, the economic damage can be calculated (Papathoma-Köhle et al. 2012).

The damage susceptibility profile represents the ideal starting point of the planning process aiming at providing optimal object protection, since the final aim of the planning efforts is to verify that the building under consideration is hazard-adapted.

### 3 Application to a case study

In this section we present a practical application of the analytic steps outlined in Sect. 2, taking as an example a residential building, which is located on the debris cone of the Grossberg torrent, Italian Alps. In the seventies a trapezoidal channel was built in the fan area to prevent damages on houses and crops. The channel cross section ( $5.6 \text{ m}^2$ ) was designed for a liquid discharge  $45 \text{ m}^3/\text{s}$ ; additionally a large slit dam with an available retention volume of  $19000 \text{ m}^3$  was built in 2009 at the fan apex to protect the downstream village. On August 4<sup>th</sup> 2012, an event occurred with a debris volume of  $53000 \text{ m}^3$  and damaged seriously several residential buildings in the debris cone area (see Figure 6). Following the analytic structure employed in section 2 we first set up a validated process model for this debris flow event, then we derive the relevant impacts on the buildings envelope and successively we proceed by modeling the structural and physical response.

#### 3.1 Process modelling

With respect to the full procedure outlined in the previous sections it is admissible to restrict the investigation to the analysis of the fluid flow processes since geomechanical processes can be neglected for the specific case.

By means of two-dimensional debris flow simulation model over mobile bed – TRENT 2D – (Armanini et al. 2009, Rosatti et al. 2013) the event of 04 August 2012 was reconstructed by using the detailed event documentation data (Macconi et al. unpublished).

##### 3.1.1 Process analysis

A convective storm hit the Pfitsch valley on August 4<sup>th</sup> 2012; cumulated rainfall in 6.25 hours reached 45 mm. Using the Intensity-Duration-Frequency curve for the area provided by the Hydraulic Engineering Department of the Autonomous Province of Bolzano (Macconi et al. unpublished) the storm can be classified approximately as a 300-year return period event. The storm originated in the western part of the Province (Passer valley) and moved in north-west direction, towards the Upper Isarco valley where roughly 30 debris and mudflows were

1 triggered. Triggering conditions have been exacerbated by abundant precipitations, occurred  
2 during the previous month, leading to a partial saturation of the soil (total cumulated rainfall  
3 in July was 230 mm in Vipiteno). Figure 7 shows triggering areas scattered over the steep  
4 landscape.

5 The watershed of the Gossbergbach is characterized by an area of 10 km<sup>2</sup>, ranging from 1420  
6 to 3130 m a.s.l. The steepness of the valley side and the availability of sediments enhanced  
7 the process. Figures 8A and 8B display the steepness of the channel in the proximity of the  
8 slit dam and the tendency towards debris flow initiation, according to Cavalli and Marchi  
9 (2006). Red dots indicate channel sections where the ratio between the contributing area and  
10 the local slope can cause soil failure.

11 Hydrological and hydrodynamics modeling was undertaken with the purpose of quantifying  
12 static and dynamic loadings exerted by the debris flow impact on the target building and their  
13 evolution in time. In particular, flow velocities (for each control section), flow height and  
14 deposit thickness for this specific event are identified. The computational 2D domain was  
15 chosen with the purpose of focusing on the spreading of the debris flow along the fan, i.e.  
16 downstream the slit dam. The rationale for this was the knowledge of the total volume  
17 deposited on the fan. The volume was measured through intensive field campaigns carried out  
18 by the Hydraulic Engineering Department few days after the event.

19 Hydrological and hydrodynamics modeling was undertaken with the purpose of quantifying  
20 static and dynamic loading impact of the debris flow on the target building and their evolution  
21 in space and time. In particular, for this specific event, flow velocities, flow heights, and  
22 deposit thickness were computed and compared to measured values. Patterns of deposits were  
23 measured by intensive field surveys carried out by the Hydraulic Engineering Department of  
24 Bolzano few days after the event and used for model calibration. The computational 2-D  
25 domain was chosen with the purpose of focusing on the spreading of the debris flow along the  
26 fan, i.e. downstream the slit dam. An additional rationale for this choice was that the patterns  
27 of deposition and the total volume deposited on the fan were known. The total volume was  
28 estimated to be 53.000 m<sup>3</sup>. Boundary conditions were given in terms of liquid and solid  
29 hydrograph; the liquid hydrograph was derived using a back-analysis approach aiming at  
30 reproducing field observations, i.e. the event duration (roughly 6 h, compare Figure 9) and the  
31 total amount of transported sediment (i.e. flow transport capacity). The liquid boundary  
32 condition was computed using a geomorphic, semi-distributed hydrological model (Rigon et



al., 2011) which accounts for different resident times characterizing various portions of the watershed. The rainfall input to the model was derived from measured rainfall data. Solid inflow boundary conditions were calculated on the basis of the stream bed gradient, the average characteristics of the transported sediments (internal friction angle,  $d_{50}$ ) and the liquid hydrograph.

### 3.1.2 Results of process analysis

Results are displayed in Figure 10C in terms of deposition thickness. Figure 10A and 10B offer a comparison with the observed event. Considerations on the maximum local velocities may additionally help to validate the modeling results. As shown in Table 1 the maximum local velocities in the immediate surroundings of the selected residential building are considerably large (2 m<sup>3</sup>/s). Although deposition took place as the net result of the transport process (max. 1 m), relevant amounts of solid material were transported further as it is proved by the large deposition lobe downstream of the considered building.

For the subsequent fluid flow impact, the process simulation output of the primitive physical variables (i.e. debris flow depths, velocities in x and y direction and thicknesses of the deposition layer) on the four vertical control sections containing the considered residential building are relevant. We considered  $K = 3$  representative time steps to mirror appropriately the dynamics of the debris flow event (compare Figure 11).

According to Figure 11 one may note that the building side 1 is exposed to the debris flow mainly in the initial part of the depositional event; the building side 2 is mostly exposed in the medium time range of depositional event, and the building side 3 is exposed for the entire event duration only in its upper part. This specific pattern of debris flow propagation is due to the deflection effect exerted by an agricultural building located further upstream.

As an example we report in Table 1 for the time step  $k = 2 \rightarrow t_k = 7200s$  the values of the primitive variables  $\mathbf{W} = (h_{DF}, v_n, h_D)^T$ , where  $v_n$  is the flow velocity normal to the control section,  $h_{DF}$  is the debris flow depth and  $h_D = z_b$  is the thickness of the deposition layer.

Figure 12 depicts the map of maximum flow velocities (A) and shows as a comparison a detailed view (B) of the mud marks up to the second floor of the building envelope, suggesting that the dynamics of the process was characterized by high kinetic energies.

A complete process analysis should include, as outlined in section 2.2, a detailed analysis of the geomechanical processes possible inducing a destabilization of the building considered. The relevance of such influences, however, can be categorically excluded in the analyzed case study, since no erosion patterns, inducing even the slightest changes in slope stability, could be detected throughout the event duration. Hence, we will assume for this case study, also concerning the subsequent impact modeling, the complete absence of significant geomechanical actions.

### 3.2 Impact modelling

According to Sect. 2.3.2, and specifically to the analytic expressions (3) and (4) the pressure distribution on the building envelope has been determined for the vertical planes normal to the envelope's walls located at each progressive coordinate (compare third column in Table 1). In Figure 13 a specific pressure distribution for the time step  $k = 2 \rightarrow t_k = 7200s$  is shown as an example, corresponding to a specific vertical plane. Note that in this case both the velocity of the impacting debris flow surge ( $v_n = 0.21 m/s$ ) and the thickness of the position layer ( $h_d + h_s = 0.44 m$ ) are  $> 0$ .

In Figure 14 the maximum impact pressures at the building envelope perimeter are presented for the considered time step,  $k = 2 \rightarrow t_k = 7200s$ .

Functional to the analysis of potential intrusion of solid material in the interior volumes of the building we quantified according to Eqns. (5) and (6), regarding the three selected time steps, the exposure to wetting and the potential permeability of the building envelope (compare Table 2).

### 3.3 Structural and physical response analysis

For the purposes of the present case study the structural analysis is restricted to the verification of one specific Ultimate Limit State deemed as relevant, namely STR (compare Sect. 2.4), implying failure or excessive deformation of the structure. As already stated, the reference design situation for natural hazard impact is that of an accidental situation,

corresponding for each specific vertical plane to a loading spectrum similar to the example shown in Figure 13.

With reference to the impacts of time step  $k = 2 \rightarrow t_k = 7200s$  the resulting loading configuration for the entire building is shown in Figure 15. The distributed loading configurations are converted into their work equivalent nodal loads, since a finite element analysis using the software Sismicad 12.1 (Concrete Srl, 2012) is performed.

The relevant results of the Finite Element Analysis for each finite element of the building model (compare definition sketch in Figure 16) are the shear forces ( $V_o$  and  $V_z$ ) shown in Figure 17, the tensile stresses ( $F_{oo}$  and  $F_{zz}$ ) and shear stress component –  $F_{oz}$  – represented in Figure 18, and the bending moments ( $M_{oo}$  and  $M_{zz}$ ) and torque –  $M_{oz}$  – visualized in Figure 19.

For the computed stress resultants the building structure proved to be verified with respect to the Ultimate Limit State STR. Whereas simple exposure to wetting is not critical for the considered building, the no-intrusion limit state could not be verified for all openings of the building in the first floor (compare equation 10 and Table 2). The resulting damage susceptibility profile (i.e. structural stability, but permeability to debris flow material intrusion) captures in its essentials the weak points which characterize the physical vulnerability of such building typologies exposed to similar ranges of debris flow intensities.

It has to be noted that in the debris flow case the process of moisture transport to the building walls is limited and the associated effects can be neglected.

## **4 Discussion and conclusion**

The presented study extended earlier works on the deduction of empirical loss functions for buildings located on Alpine torrent fans. Taking an engineering perspective, and therefore neglecting any social implications, we presented a method to quantify vulnerability of buildings exposed to torrent processes. Starting with an overview on recent empirical studies on vulnerability, and acknowledging the overall gap in detailed studies on damage patterns, we studied analytically the loss generation mechanisms of structures exposed to hazard process impacts (i.e. process modeling and impact modeling) and the critical physical responses from a structural and building physics perspective. The proposed procedure

1 coherently follows the Eurocode normative framework, and is of valuable information for the  
2 planning of flood-prone buildings. In addition to the existing empirical vulnerability  
3 functions, which were deduced using an ex-post approach, our conceptual and methodological  
4 setup allows to identify triggers for damage amplification (e.g. potential material intrusion  
5 through openings of the building envelope, or structural weaknesses) and may be useful in the  
6 ex-ante definition of risk mitigation strategies.

7 Understanding, identifying and quantifying vulnerability is an essential need for designing  
8 and implementing effective and efficient flood risk mitigation strategies in general and local  
9 protection measures in particular. The proposed damage susceptibility concept is a useful  
10 entry point for the planning process. It highlights the verifications that have to be met by the  
11 design of local protection measures.

12 Linking the vulnerability assessment to engineering science supports the idea that the utility  
13 of cost-benefit analysis goes far beyond the pure selection of optimal management options out  
14 of an available bundle of measures; instead, if employed in earlier phases of the risk  
15 management process such an approach may serve as an additional planning tool. Analyzing  
16 the time-varying vulnerability of elements at risk – having a crucial impact on the expected  
17 consequences of flood impacts – is increasingly becoming important for a wide spectrum of  
18 management activities within the risk governance process. Intervention planning, for  
19 example, which is recognized to be an effective tool to mitigate flood risk, is strongly based  
20 on the quality of the analysis of both the spatial and the temporal dynamics either of the flood  
21 hazard process or of the corresponding damaging impacts on elements at risk (Mazzorana et  
22 al., 2012b).

23 The method proposed, however, is very data-demanding and is so far only applicable on the  
24 local scale of individual buildings located on torrent fans. Therefore, an area-wide application  
25 of this approach to an entire region still is challenging. Nevertheless, both the physical  
26 foundation and the traceability and reproducibility of the proposed vulnerability assessment  
27 method supports the identification of dynamics in natural hazard risk and contributes to an  
28 improved understanding of current risk levels.

29 To conclude, different concepts of vulnerability have different roots, different scientific  
30 objects, and therefore different informative values. Combining contributions from empirical  
31 studies with in-depth studies on the damage patterns will allow us to better understand the

triggers responsible for vulnerability, and will lead to a deeper understanding of mountain hazard risk. This is a first step to increase the resilience of mountain communities.

## References

Armanini, A., Fraccarollo, L., and Rosatti, G.: Two-dimensional simulation of debris flows in erodible channels, *Computers and Geosciences*, 35, 993-1006, 2009.

Armanini, A., Larcher, M., and Odorizzi, M.: Dynamic impact of a debris flow against a vertical wall, *Italian Journal of Engineering Geology and Environment* 11, 1041-1049, 2011.

Birkmann, J., Cardona, O. M., Carreño, M. L., Barbat, A. H., Pelling, M., Schneiderbauer, S., Kienberger, S., Keiler, M., Alexander, D., Zeil, P., and Welle, T.: Framing vulnerability, risk and societal responses: the MOVE framework, *Natural Hazards*, 67, 193-211, 2013.

Cavalli, M., Marchi, L.: Identificazione preliminare delle aree di pericolo legate a fenomeni torrentizi. Consiglio Nazionale delle Ricerche (CNR), Istituto di Ricerca per la Protezione Idrogeologica Padova (IRPI), 2006.

Comiti, F., Mao, L., Preciso, E., Picco, L., Marchi, L., and Borga, M.: Large wood and flash floods: evidences from the 2007 event in the Davča basin (Slovenia), in: *Monitoring, simulation, prevention and remediation of dense and debris flow II*, edited by: De Wraichen, D., Brebbia, C. A., and Lenzi, M. A., *WIT Transactions on Information and Communication Technologies* 39, WIT Press, Southampton, 173-182, 2008.

Concrete srl: *Sismicad 12.1 manuale d'uso*, 2012, accessed online link: <http://www.concrete.it/sismicad12/>

Cutter, S., Finch, C.: Temporal and spatial changes in social vulnerability to natural hazards. *Proceedings of the National Academy of Sciences of the United States of America* 105 (7):2301-2306, 2008.

de Vries, D.: Being temporal and vulnerability to natural disasters, in: *Perspectives on social vulnerability*, edited by: Warner, K., United Nations University, Institute for Environment and Human Security, Bonn, 36-49, 2007.

Diehl, T.: Potential drift accumulation at bridges, U.S. Department of Transportation, Federal Highway Administration Research and Development, Turner-Fairbank Highway Research Center, Washington Publication No. FHWA-RD-97-028, 1997.

- 1 Feix, J., and Walkner, R.: Betonbau: Grundlagen der Bemessung nach EC2, Studia  
2 Universitätsverlag, Innsbruck, 2012.
- 3 Fell, R., Corominas, J., Bonnard, C., Cascini, L., Leroi, E., and Savage, W.: Guidelines for  
4 landslide susceptibility, hazard and risk zoning for land-use planning, Engineering Geology,  
5 102, 85-98, 2008.
- 6 Fuchs, S., Heiss, K., and Hübl, J.: Towards an empirical vulnerability function for use in  
7 debris flow risk assessment, Natural Hazards and Earth System Sciences, 7, 495-506, 2007.
- 8 Fuchs, S.: Susceptibility versus resilience to mountain hazards in Austria – Paradigms of  
9 vulnerability revisited, Natural Hazards and Earth System Sciences, 9, 337-352, 2009.
- 10 Fuchs, S., Birkmann, J., and Glade, T.: Vulnerability assessment in natural hazard and risk  
11 analysis: current approaches and future challenges, Natural Hazards, 64, 1969-1975, 2012a.
- 12 Fuchs, S., Ornetsmüller, C., and Totschnig, R.: Spatial scan statistics in vulnerability  
13 assessment – an application to mountain hazards, Natural Hazards, 64, 2129-2151, 2012b.
- 14 Fuchs, S.: Cost-benefit analysis of natural hazard mitigation, in: Encyclopedia of natural  
15 hazards, edited by: Bobrowski, P., Springer, Dordrecht, 121-125, 2013.
- 16 Fuchs, S., Keiler, M., Sokratov, S. A., and Shnyparkov, A.: Spatiotemporal dynamics: the  
17 need for an innovative approach in mountain hazard risk management, Natural Hazards, 68,  
18 1217-1241, 2013.
- 19 Gall, M., Borden, K., and Cutter, S.: When do losses count? Six fallacies of natural hazards  
20 loss data, Bulletin of the American Meteorological Society, 90, 799-809, 2009.
- 21 Gallerani, V., Viaggi, D., and Zanni, G.: Manuale di estimo, McGraw-Hill, Milano, 2011.
- 22 Gulvanessian, H., Calgaro, J.-A., Holicky, M.: Designers' guide to EN 1990. Eurocode: Basis  
23 of structural design. Thomas Telford Ltd, 2004.
- 24 Gulvanessian, H.: EN 1990 Eurocode “Basis of structural design” – the innovative head  
25 Eurocode. Steel Construction, 2(4), 222–227, 2009.
- 26 Hawkesbury-Nepean Floodplain Management Steering Committee (ed.): Reducing  
27 vulnerability of buildings to flood damage. Hawkesbury-Nepean Floodplain Management  
28 Steering Committee, Parramatta, 2006.

- 1 Holub, M., and Fuchs, S.: Benefits of local structural protection to mitigate torrent-related  
2 hazards, in: Risk Analysis VI, edited by: Brebbia, C., and Beriatos, E., WIT Transactions on  
3 Information and Communication Technologies 39, WIT, Southampton, 401-411, 2008.
- 4 Holub, M., and Fuchs, S.: Mitigating mountain hazards in Austria – Legislation, risk transfer,  
5 and awareness building, Natural Hazards and Earth System Sciences, 9, 523-537, 2009.
- 6 Holub, M., Suda, J., and Fuchs, S.: Mountain hazards: reducing vulnerability by adapted  
7 building design, Environmental Earth Sciences, 66, 1853-1870, 2012.
- 8 Hübl, J., Bunza, G., Hafner, K., Klaus, W.: ETAlp – Erosion, Transport in Alpinen Systemen  
9 “Stummer Zeugen Katalog”, Wien, Projektteam ETAlp, 2003.
- 10 Hufschmidt, G.: A comparative analysis of several vulnerability concepts, Natural Hazards,  
11 58, 621-643, 2011.
- 12 Ishikawa, Y.: Studies on disasters caused by debris flows carrying logs down mountains,  
13 SABO Division, Public Works Research Institute, Ministry of Construction, 45-75, 1990.
- 14 Iverson, R.: The physics of debris flows, Reviews of Geophysics, 35, 245-296, 1997.
- 15 Jakob, M., Stein, D., and Ulmi, M.: Vulnerability of buildings to debris flow impact, Natural  
16 Hazards, 60, 241-261, 2012.
- 17 Jakob, M.: Events on cones and fans: recurrence interval and magnitude, in: Dating torrential  
18 processes on fans and cones, edited by: Schneuwly-Bollschweiler, M., Stoffel, M., and  
19 Rudolf-Miklau, F., Springer, Dordrecht, 95-108, 2013.
- 20 Kappes, M., Keiler, M., von Elverfeldt, K., and Glade, T.: Challenges of analyzing multi-  
21 hazard risk: a review, Natural Hazards, 64, 1925-1958, 2012a.
- 22 Kappes, M., Papathoma-Köhle, M., and Keiler, M.: Assessing physical vulnerability for  
23 multi-hazards using an indicator-based methodology, Applied Geography, 32, 577-590,  
24 2012b.
- 25 Kienholz, H., Krummenacher, B., Kipfer, A., and Perret, S.: Aspects of integral risk  
26 management in practice – considerations with respect to mountain hazards in Switzerland,  
27 Österreichische Wasser- und Abfallwirtschaft, 56, 43-50, 2004.
- 28 Mao, L., and Comiti, F.: The effects of large wood elements during an extreme flood in a  
29 small tropical basin of Costa Rica, in: Debris flow III, edited by: De Wraichen, D., and

1 Brebbia, C. A., WIT Transactions on Information and Communication Technologies 39, WIT  
2 Press, Southampton, 225-236, 2010.

3 Mazzorana, B., and Fuchs, S.: Fuzzy Formative Scenario Analysis for woody material  
4 transport related risks in mountain torrents, *Environmental Modelling & Software*, 25, 1208-  
5 1224, 2010.

6 Mazzorana, B., Comiti, F., Volcan, C., and Scherer, C.: Determining flood hazard patterns  
7 through a combined stochastic-deterministic approach, *Natural Hazards*, 59, 301-316, 2011.

8 Mazzorana, B., Comiti, F., Scherer, C., and Fuchs, S.: Developing consistent scenarios to  
9 assess flood hazards in mountain streams, *Journal of Environmental Management*, 94, 112-  
10 124, 2012a.

11 Mazzorana, B., Levaggi, L., Formaggioni, O., and Volcan, C.: Physical vulnerability  
12 assessment based on fluid and classical mechanics to support cost-benefit analysis of flood  
13 risk mitigation strategies, *Water*, 4, 196-218, 2012b.

14 Mazzorana, B., Levaggi, L., Keiler, M., and Fuchs, S.: Towards dynamics in flood risk  
15 assessment, *Natural Hazards and Earth System Sciences*, 12, 3571-3587, 2012c.

16 Mazzorana, B., Comiti, F., and Fuchs, S.: A structured approach to enhance flood hazard  
17 assessment in mountain streams, *Natural Hazards*, 67, 991-1009, 2013.

18 Papathoma-Köhle, M., Kappes, M., Keiler, M., and Glade, T.: Physical vulnerability  
19 assessment for alpine hazards: state of the art and future needs, *Natural Hazards*, 58, 645-680,  
20 2011.

21 Papathoma-Köhle, M., Keiler, M., Totschnig, R., and Glade, T.: Improvement of vulnerability  
22 curves using data from extreme events: debris flow event in South Tyrol, *Natural Hazards*, 64,  
23 2083-2105, 2012.

24 Pierson, T. C., and Costa, J. E.: A rheologic classification of subaerial sediment-water flows,  
25 *Geological Society of America Reviews in Engineering Geology*, 7, 1-12, 1987.

26 Pitman, E., and Le, L.: A two-fluid model for avalanche and debris flows, *Royal Society of*  
27 *London Transactions Series A - Mathematical, Physical and Engineering Sciences*, 363, 1573-  
28 1601, 2005.

29 Plaxis: Scientific manual, 2011, accessed online link: [http://www.plaxis.nl/files/files/2D2011-](http://www.plaxis.nl/files/files/2D2011-4-Scientific.pdf)  
30 [4-Scientific.pdf](http://www.plaxis.nl/files/files/2D2011-4-Scientific.pdf)



1 Quan Luna, B., Blahut, J., van Westen, C., Sterlacchini, S., van Asch, T., and Akbas, S.: The  
2 application of numerical debris flow modelling for the generation of physical vulnerability  
3 curves, *Natural Hazards and Earth System Sciences*, 11, 2047-2060, 2011.

4 Rigon, R., D'Odorico, P., and Bertoldi, G.: The geomorphic structure of the runout peak,  
5 *Hydrology and Earth System Sciences*, 15, 1853-1863, 2011.

6 Rosatti, G., and Fraccarollo, L.: A well-balanced approach for flows over mobile-bed with  
7 high sediment transport, *Journal of Computational Physics*, 220, 312-338, 2006.

8 Rosatti, G., and Begnudelli, L.: Two-dimensional simulation of debris flows over mobile bed:  
9 Enhancing the TRENT2D model by using a well-balanced Generalized Roe-type solver,  
10 *Computers and Fluids*, 71, 179-195, 2013.

11 Slaymaker, O.: The distinctive attributes of debris torrents, *Hydrological Sciences Journal*, 33,  
12 567-573, 1988.

13 Steinke, P.: *Finite-Elemente-Methode*, Springer, Heidelberg, 2012.

14 Suda, J., Bobacz, D., Hoffmann, R., and Zimmermann, T.: Einwirkungen auf Gebäude, in:  
15 *Bauen und Naturgefahren*, edited by: Suda, J., and Rudolf-Miklau, F., Springer, Wien, 119-  
16 180, 2012.

17 Totschnig, R., Sedlacek, W., and Fuchs, S.: A quantitative vulnerability function for fluvial  
18 sediment transport, *Natural Hazards*, 58, 681-703, 2011.

19 Totschnig, R., and Fuchs, S.: Mountain torrents: quantifying vulnerability and assessing  
20 uncertainties, *Engineering Geology*, 155, 31-44, 2013.

21 Wakker, P. P.: *Prospect theory for risk and ambiguity*, Cambridge University Press,  
22 Cambridge, 2010.

23 Walhorn, E., Kölke, A., Hübner, B., and Dinkler, D.: Fluid-structure coupling within a  
24 monolithic model involving free surface flows, *Computers and Structures*, 83, 2100-2111,  
25 2005.

26 Wisner, B.: Assessment of capability and vulnerability, in: *Mapping vulnerability. Disasters,*  
27 *development and people*, edited by: Bankoff, G., Frerks, G., and Hilhorst, D., Earthscan,  
28 London, 183-193, 2004.

- 1 Zienkiewicz, O. C., Taylor, R. L., and Zhu, J. Z.: The Finite Element method: Its basis and
- 2 fundamentals, Butterworth-Heinemann, Oxford, 2005.

1 Table 1. Arrays of the values  $\mathbf{W} = (h_{DF}, v_n, h_D)^T$  for each control section  $A_p$ , with  $p = 1, 2, 3$ .

2

Point ID	Control Section	Prog Coord	$h_{DF}$ [m]	$h_D$ [m]	$v_n$ [m/s]
0	3	0	0.14	0.00	0.424
1	3	1	0.14	0.00	0.394
2	3	2	0.15	0.00	0.288
3	3	3	0.14	0.00	0.223
4	3	4	0.12	0.00	0.313
5	3	5	0.12	0.10	0.204
6	3	6	0.11	0.17	0.278
7	3	7	0.11	0.21	0.161
8	3	8	0.11	0.29	0.246
9	3	9	0.11	0.38	0.153
10	3	10	0.10	0.44	0.212
11	3	11	0.09	0.53	0.180
12	3	12	0.09	0.60	0.102
13	3	13	0.09	0.60	0.102
14	3	14	0.09	0.65	0.066
15	3	15	0.08	0.64	0.106
16	3	16	0.09	0.70	0.014
17	3	17	0.08	0.64	0.015
18	3	18	0.07	0.57	0.008
19	3	19	0.07	0.55	0.122
20	1	0	0.00	0.00	0.000
21	1	1	0.00	0.00	0.000
22	1	2	0.00	0.00	0.000
23	1	3	0.00	0.00	0.000
24	1	4	0.00	0.00	0.000
25	1	5	0.00	0.00	0.000
26	1	6	0.00	0.00	0.000
27	1	7	0.00	0.00	0.000
28	1	8	0.00	0.00	0.000

29	1	9	0.00	0.00	0.000
30	1	10	0.02	0.00	0.126
31	1	11	0.01	0.00	0.161
32	1	12	0.02	0.00	0.160
33	1	13	0.00	0.00	0.000
34	1	14	0.07	0.00	0.423
35	1	15	0.09	0.00	0.502
36	1	16	0.09	0.00	0.411
37	1	17	0.15	0.00	0.872
38	1	18	0.17	0.00	1.044
39	1	19	0.29	0.00	1.984
40	1	19	0.29	0.00	1.984
41	2	0	0.29	0.00	1.114
42	2	1	0.32	0.00	0.897
43	2	2	0.27	0.00	0.956
44	2	3	0.24	0.00	1.181
45	2	4	0.25	0.00	0.925
46	2	5	0.22	0.00	0.899
47	2	6	0.19	0.00	0.667
48	2	7	0.16	0.00	0.618
49	2	8	0.12	0.00	0.344
50	2	9	0.13	0.00	0.541
51	2	10	0.11	0.00	0.479
52	2	11	0.08	0.06	0.220
53	2	12	0.07	0.08	0.272
54	2	13	0.05	0.15	0.157
55	2	14	0.04	0.21	0.288
56	2	15	0.04	0.21	0.288
57	2	16	0.04	0.22	0.407
58	2	17	0.03	0.37	0.340
59	2	18	0.02	0.53	0.403
60	2	19	0.02	0.59	0.415
61	2	20	0.02	0.59	0.415

62	2	21	0.01	0.69	0.391
63	2	22	0.01	0.77	0.347
64	2	23	0.01	0.75	0.345
65	2	24	0.01	0.80	0.326
66	2	25	0.01	0.70	0.358
67	2	26	0.01	0.64	0.415
68	2	27	0.02	0.63	0.496
69	2	27	0.02	0.63	0.496

1

2

1 Table 2. Overall exposure to wetting and potential permeability for the selected time steps.

2

Time step $k$	Overall exposure to wetting – $WE(t_k)$ – in $m^2$ where	Overall potential permeability – $TO_H(t_k)$ – in $m^2$ where
$k = 1 \rightarrow t_k = 3600s$	3.63	1.45
$k = 2 \rightarrow t_k = 7200s$	10.00	4.36
$k = 3 \rightarrow t_k = 10800s$	7.79	3.58

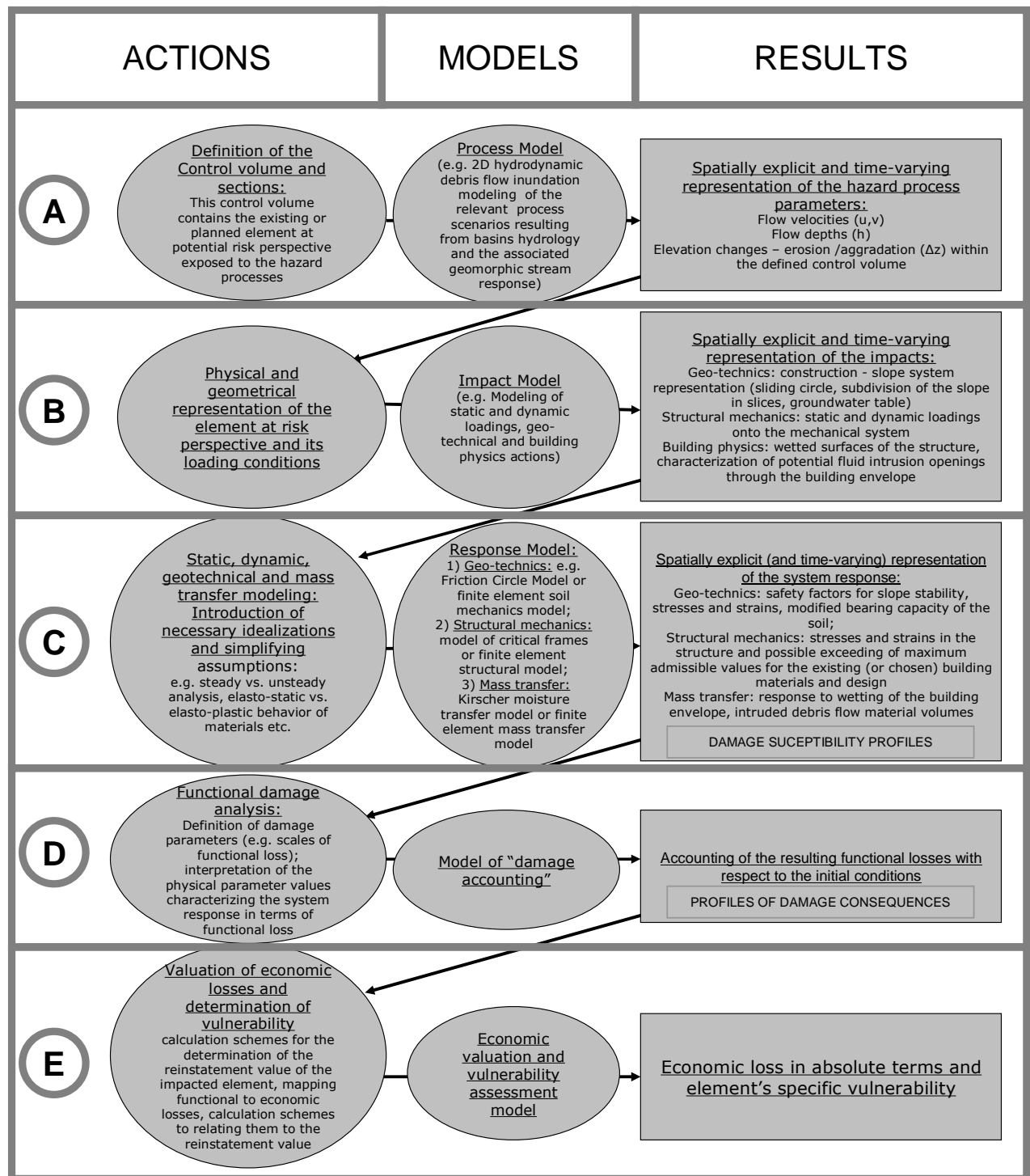
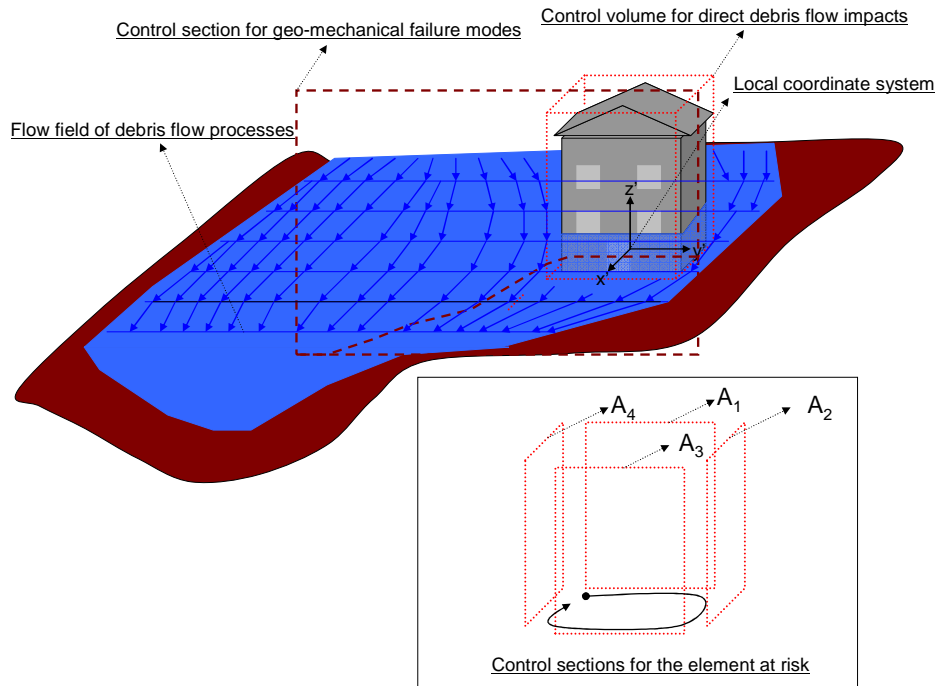


Figure 1. Overview of the physically based vulnerability assessment procedure, analytic steps A through E. Please note steps D and E are not explicitly addressed in this paper, for details refer to Mazzorana et al. (2012c).

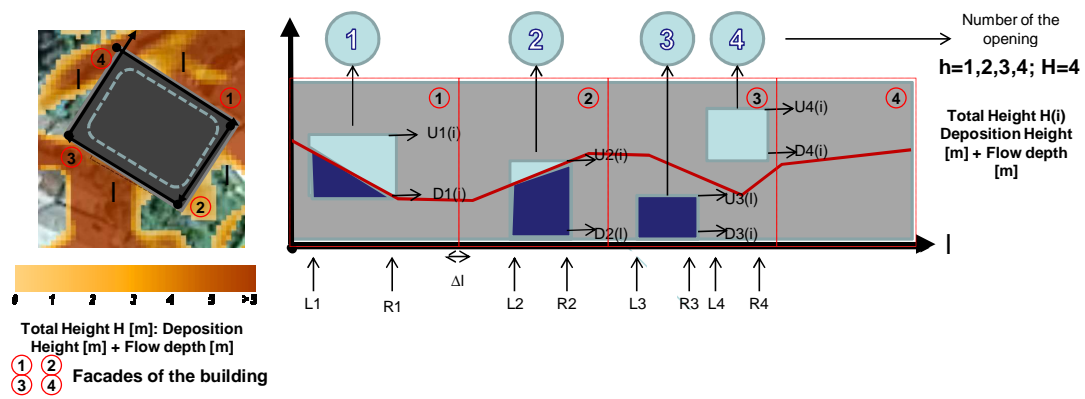


1

2

3 Figure 2. System of control volume and control sections adopted for representing the loading  
 4 configuration for the considered element at risk. The lateral plains of the control volume  
 5 identify the control sections through which the debris flow mass may enter or leave the  
 6 control volume.





1

2

3 Figure 3. Definition sketch for the determination of potential material intrusion and building

4 physics consequences.

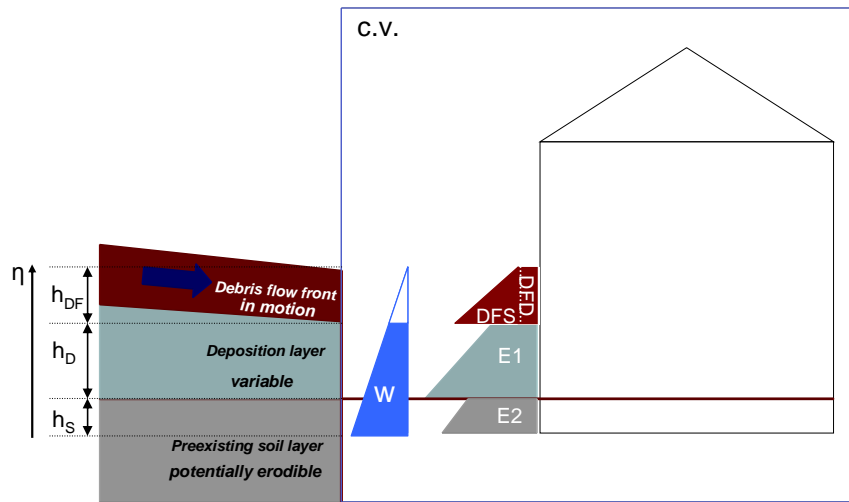
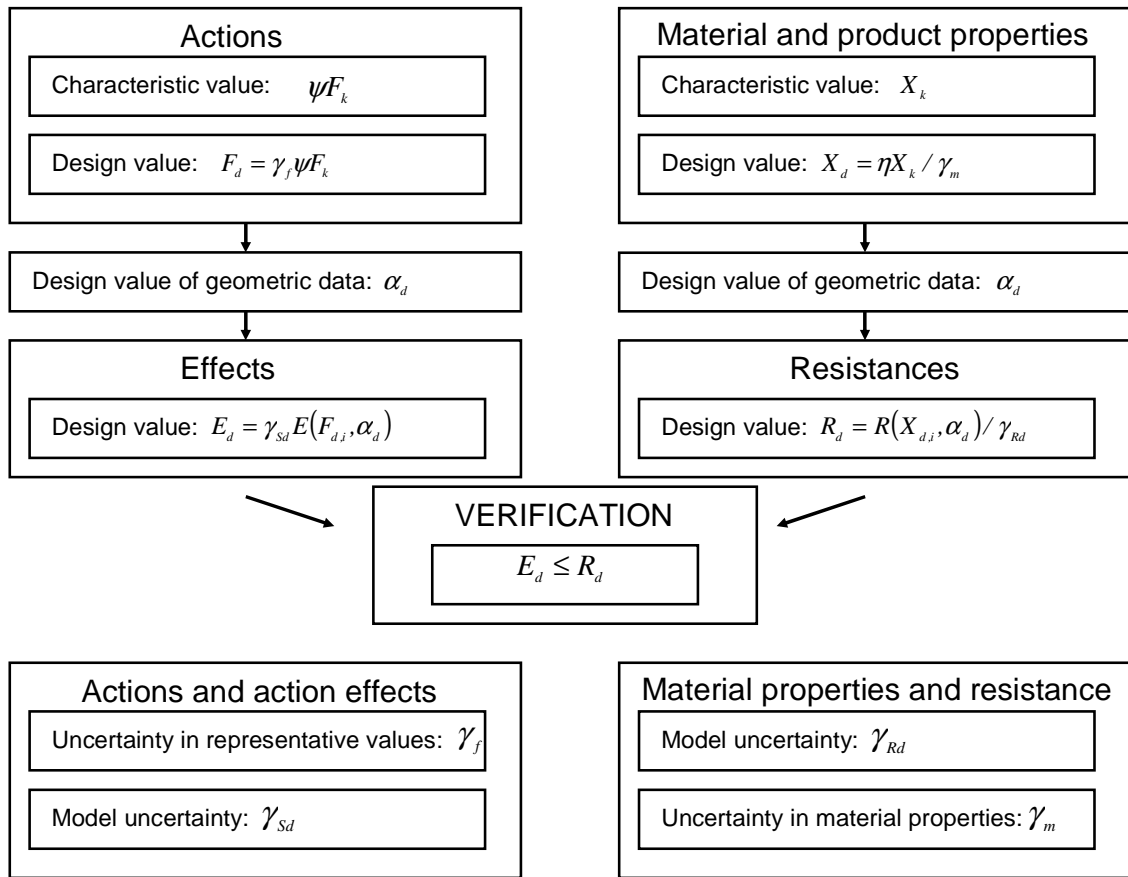


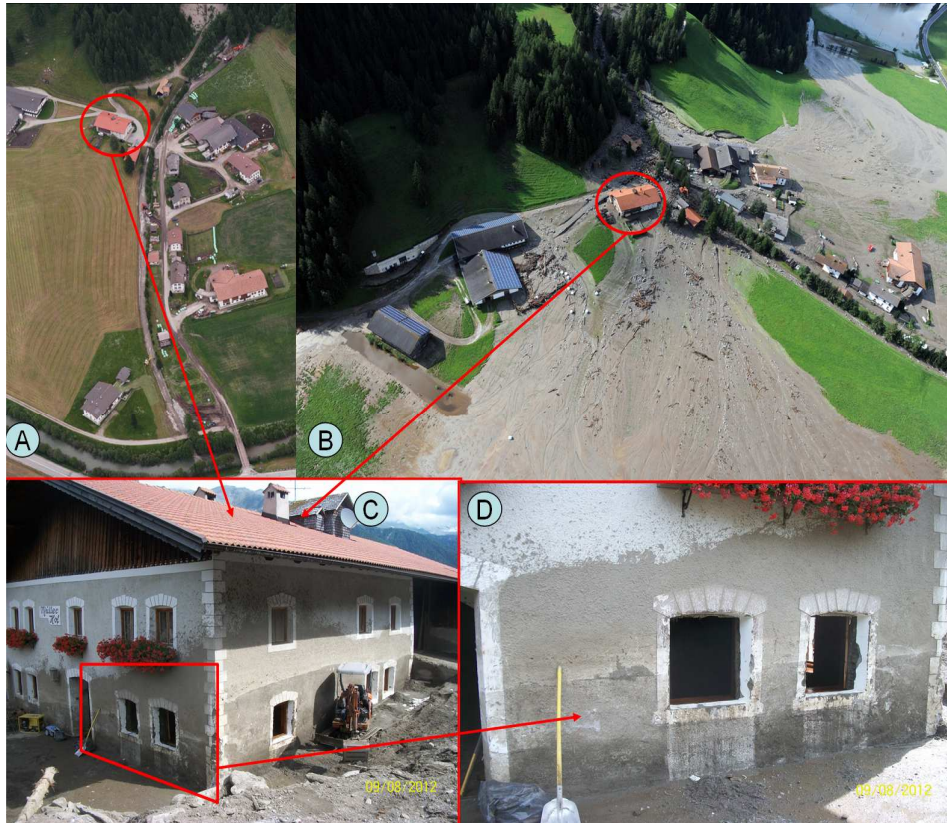
Figure 4. Qualitative scheme of the debris flow process configuration and the resulting pressure distribution on the exposed portion of the building.



1  
2

3 Figure 5. Verification scheme by the partial factor method (after Gulvanessian et al., 2004).





1

2

3

4

5

6

Figure 6. Location on the debris cone and details about the damage process for the selected residential building example. A: Configuration of the settlement area and detailed location of the example building (pre-event situation); B: depositional process patterns on the debris cone and location of the example building; C and D: detailed views on the impact mechanisms and the damage processes for the considered building.



1

2 Figure 7. Overview of the triggering areas.

3

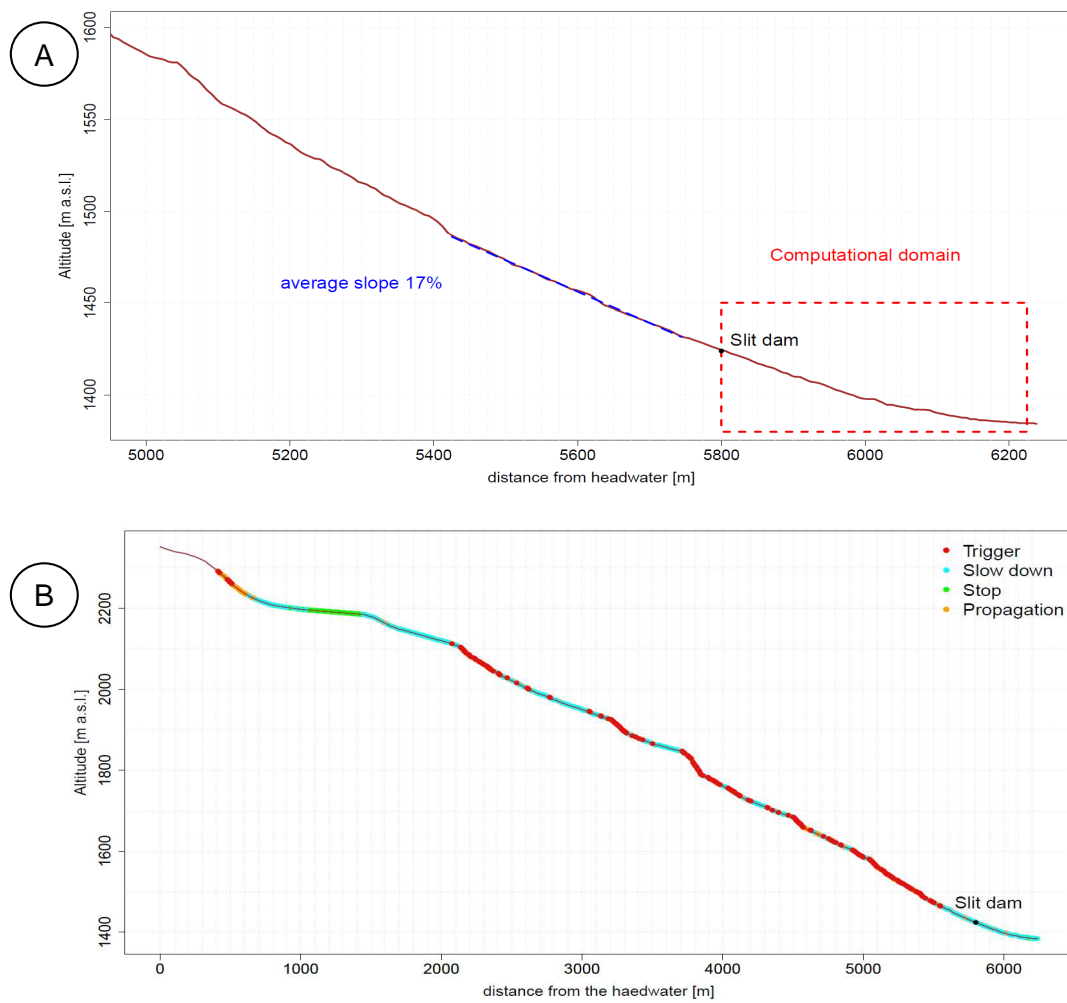
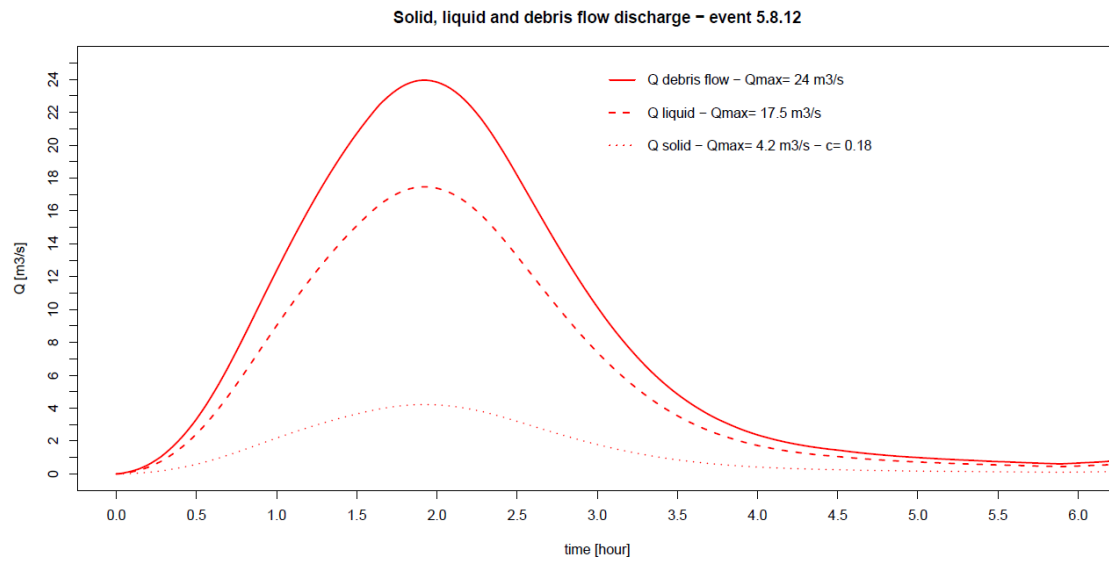


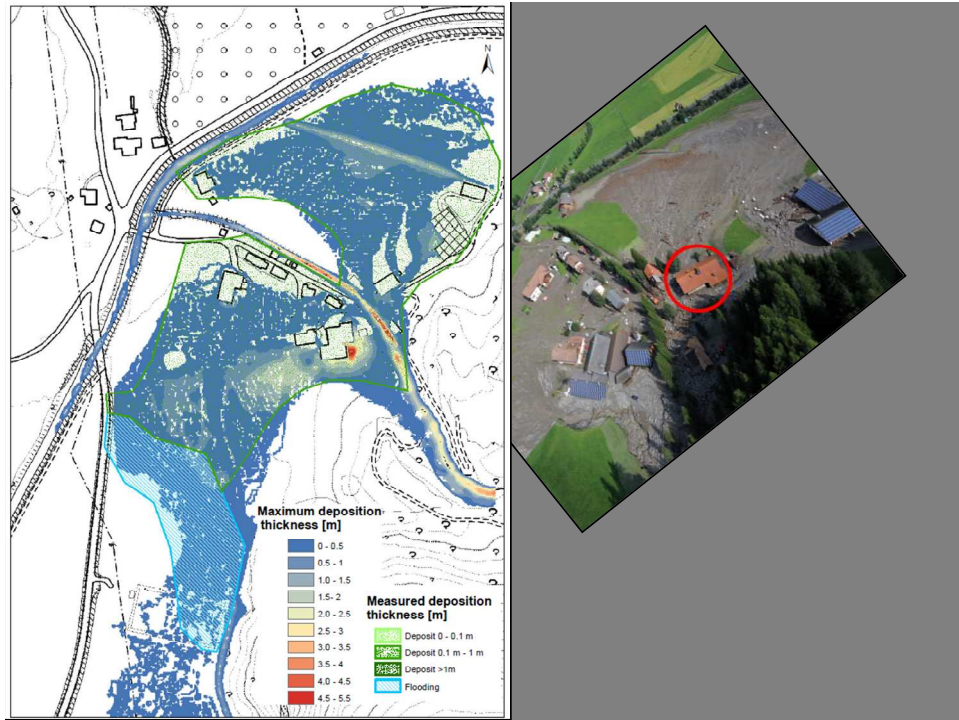
Figure 8. A) Channel slope upstream and downstream the slit dam. The computational domain is represented with a red dashed line; B) Triggering (red) points along the channel profile according to Cavalli and Marchi (2006). Light blue points, close to the slit dam, represent decreasing velocity area.



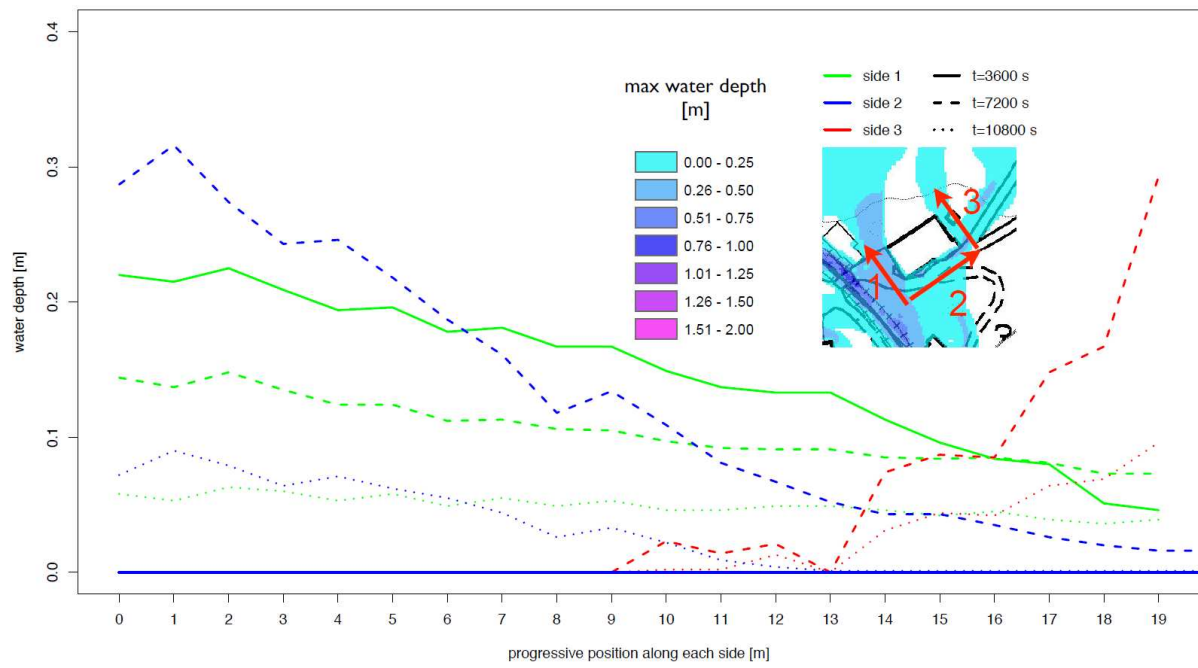
1

2 Figure 9. Boundary condition: input liquid, solid and mixture hydrograph.



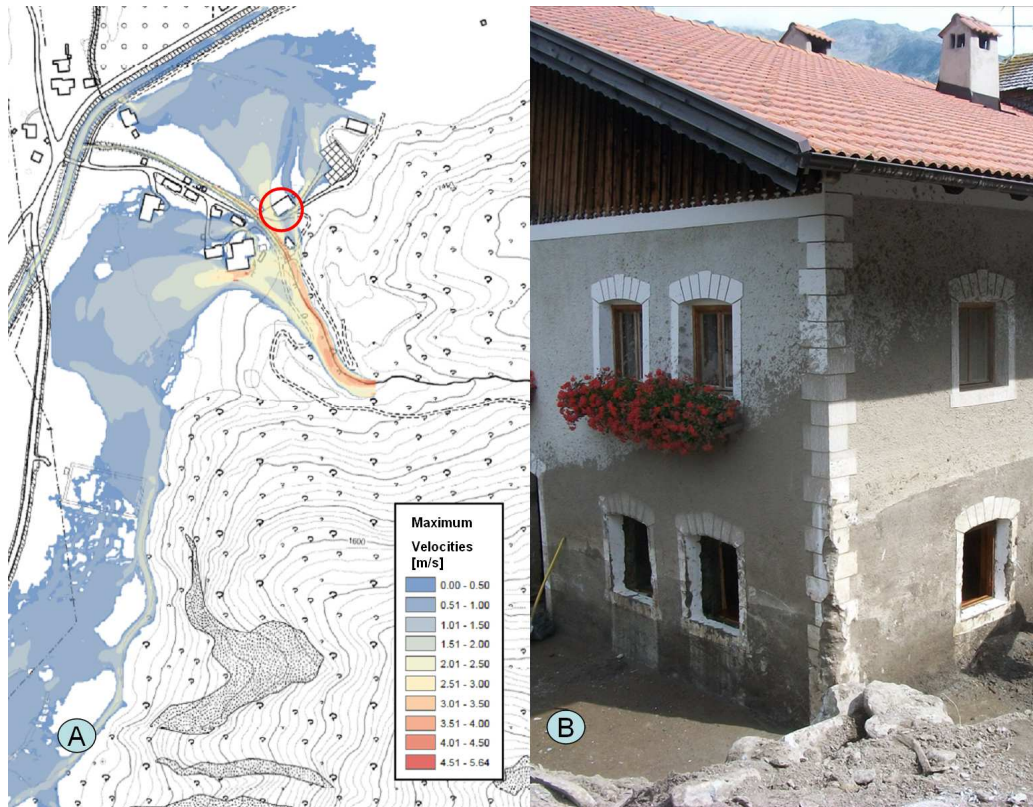


1  
2 Figure 10. Left: Comparison between simulated and measured deposition thickness. Right:  
3 Debris flow deposition patterns.

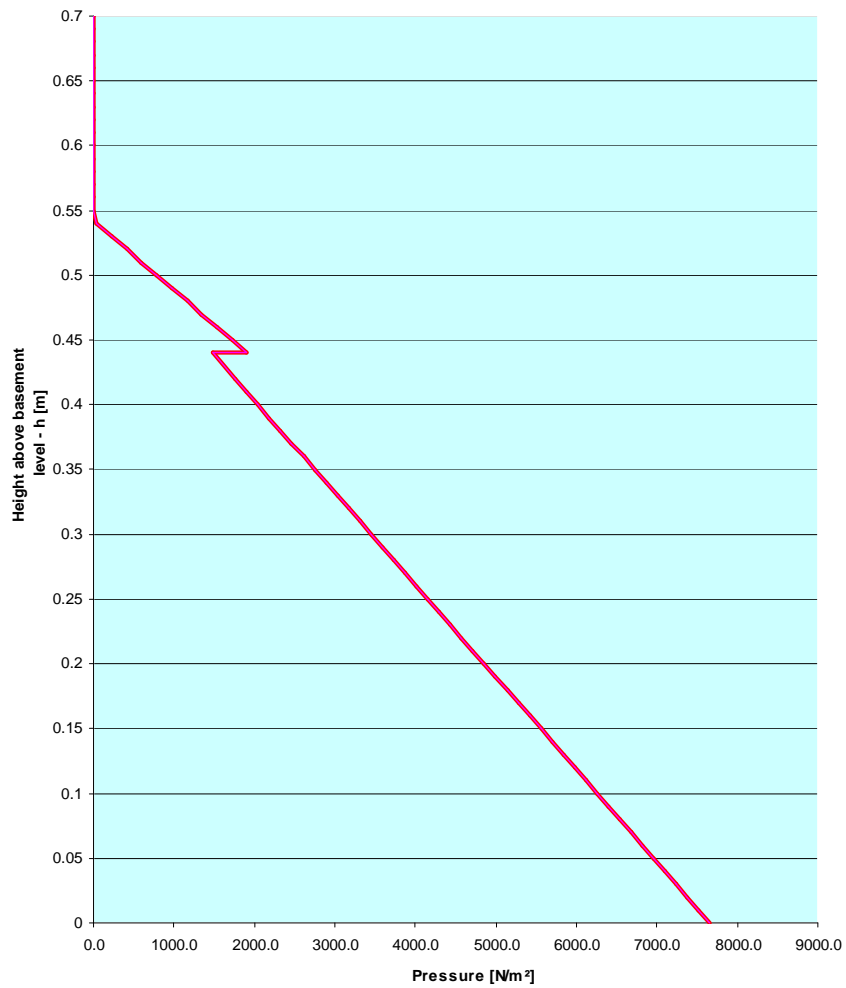


1

2 Figure 11. Water depths as a function of time as all positions along the three impacted sides of  
 3 the building.



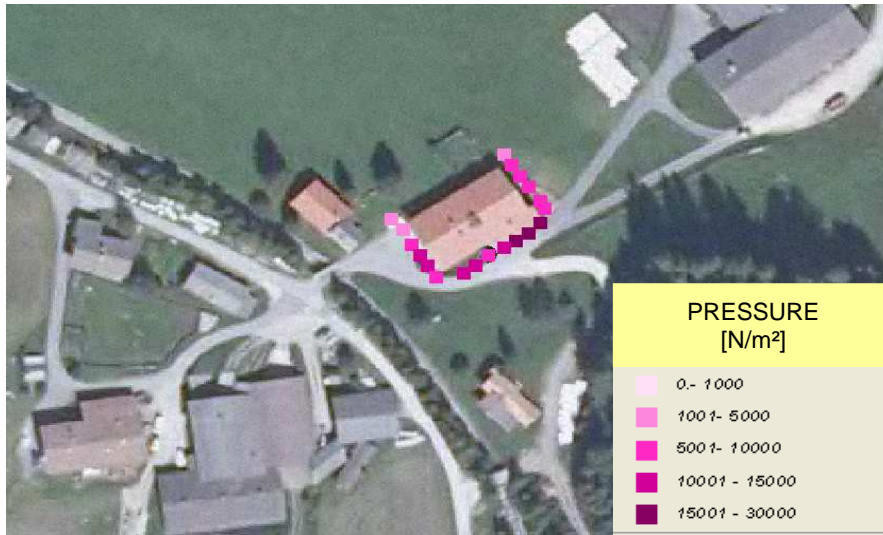
1  
2 Figure 12. A) Flow velocities and B) mud marks reaching the second floor of the building  
3 envelope.



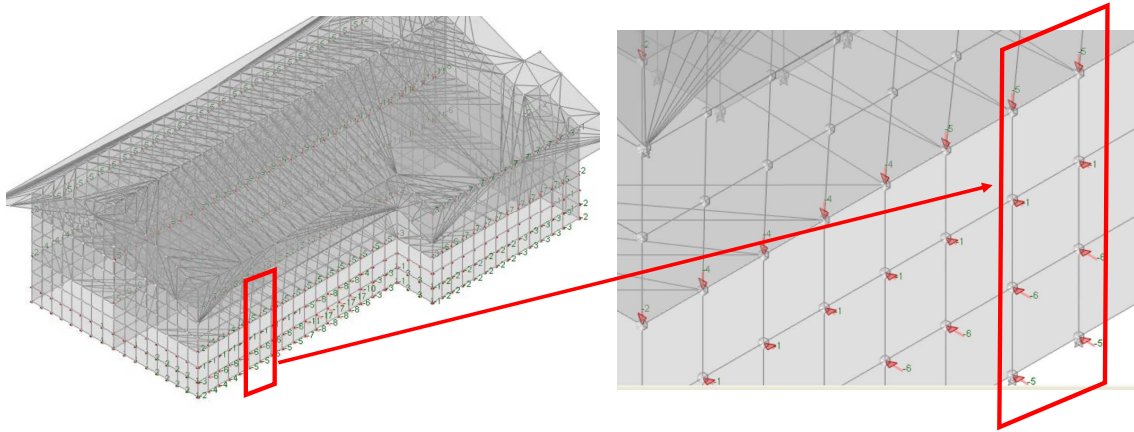
1

2 Figure 13. Pressure distribution on a selected vertical plane. The discontinuity in the pressure  
 3 distribution in the upper part (layer approximately >0,44 m) results from the boundary  
 4 between debris flow material in motion and deposited volumes.

5

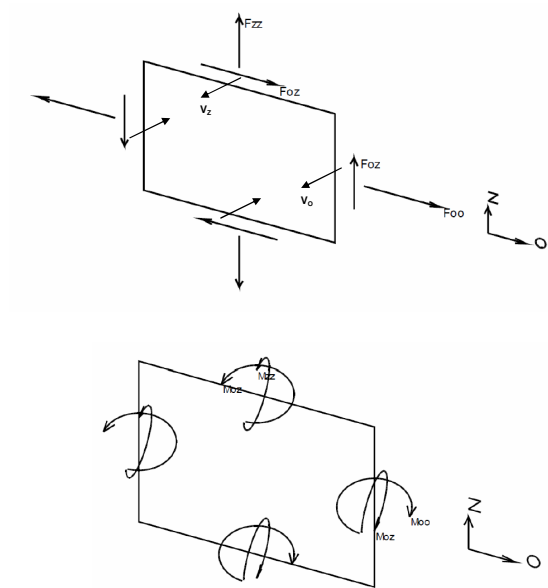


2 Figure 14. Representation of maximum pressure values in  $\text{N/m}^2$  on the building envelope.



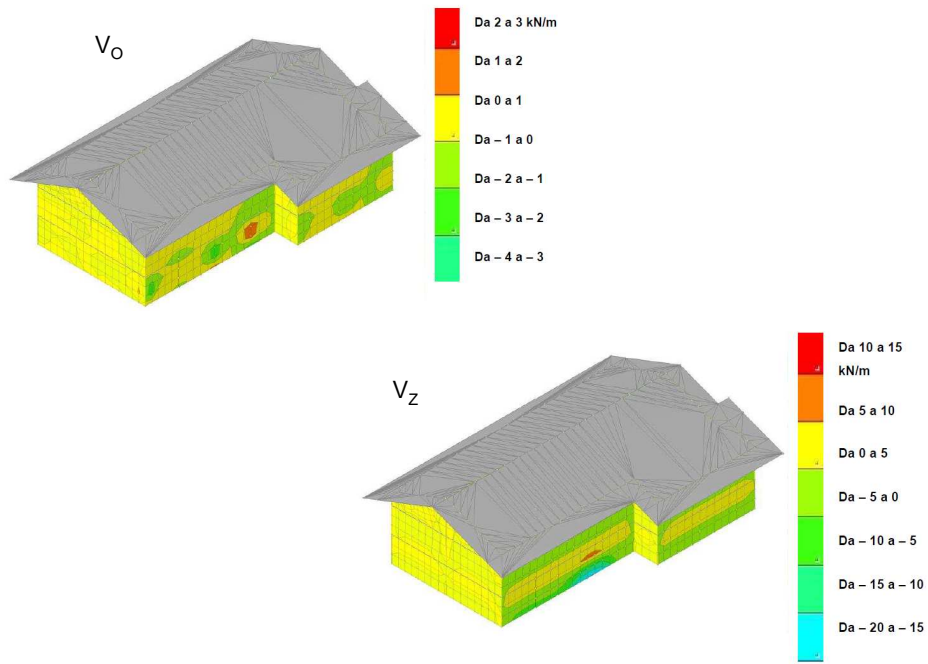
1

2 Figure 15. Work equivalent nodal loads for the finite element structure with reference to the  
 3 impacts of time step  $k = 2 \rightarrow t_k = 7200s$ .



1

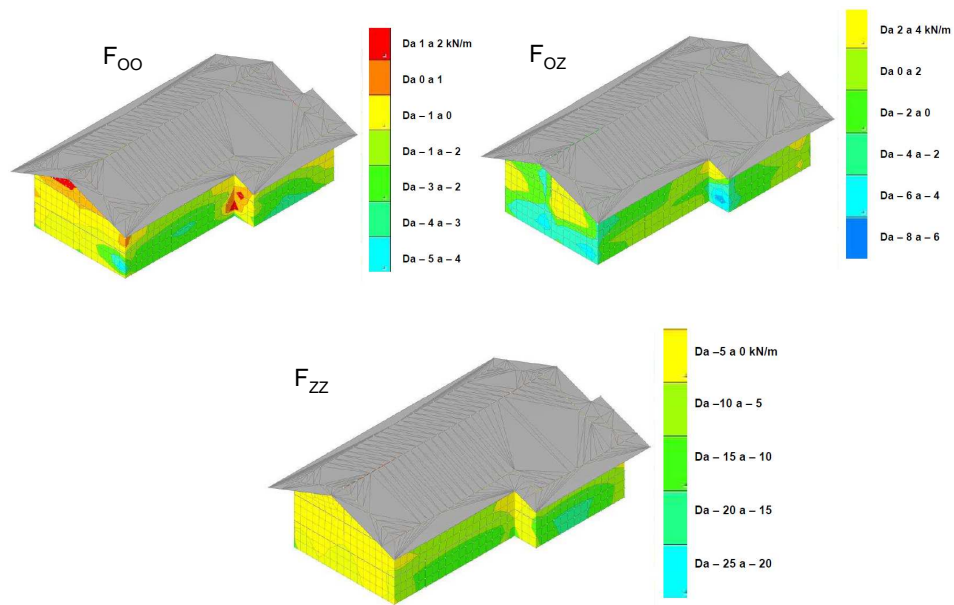
2 Figure 16. Definition sketch – stress resultants for each finite element.



1  
2 Figure 17. Shear forces ( $V_O$  and  $V_Z$ ).

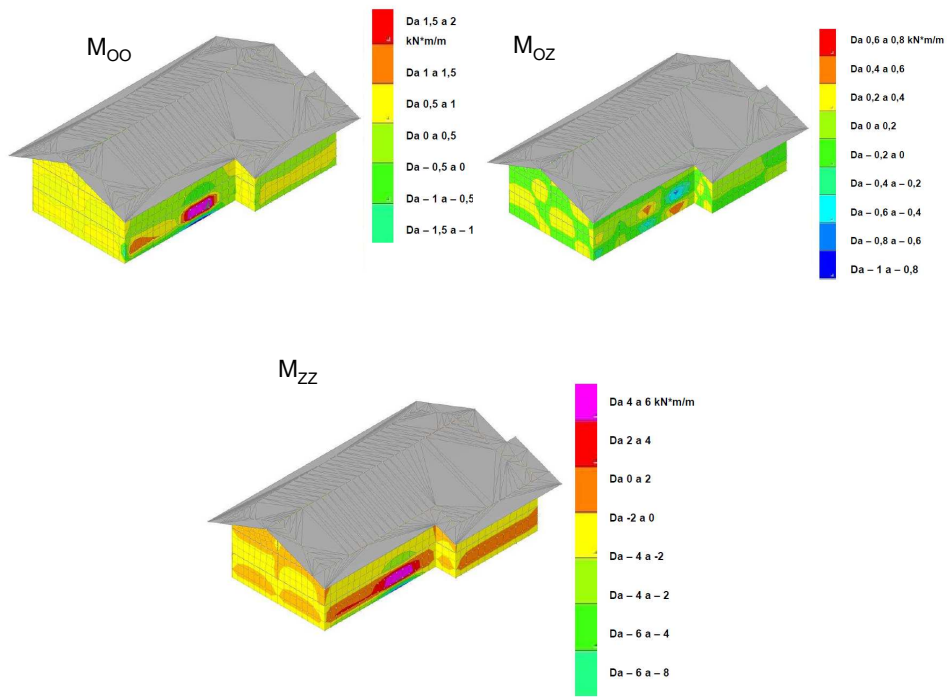
3





1

2 Figure 18. Tensile stresses ( $F_{oo}$  and  $F_{zz}$ ) and shear stress component –  $F_{oz}$ .



1

2 Figure 19. Bending moments ( $M_{oo}$  and  $M_{zz}$ ) and torque –  $M_{oz}$ .

3