

Supplementary Material I
to
“Surface seiches in Flathead Lake”

by
G. Kirillin, M. S. Lorang, T. C. Lippmann,
C. G. Gotschalk, S. Schimmelpfennig

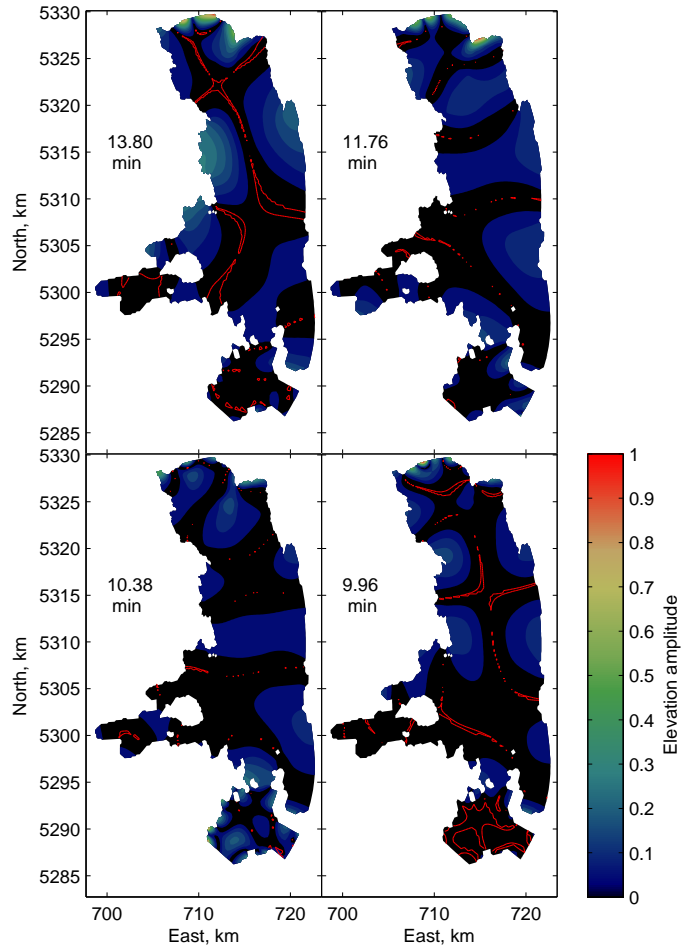


Figure S1: The synthetic maximum spectrum of modeled lake surface oscillations. Significant peaks are marked with circles subscribed with corresponding seiche periods in min.

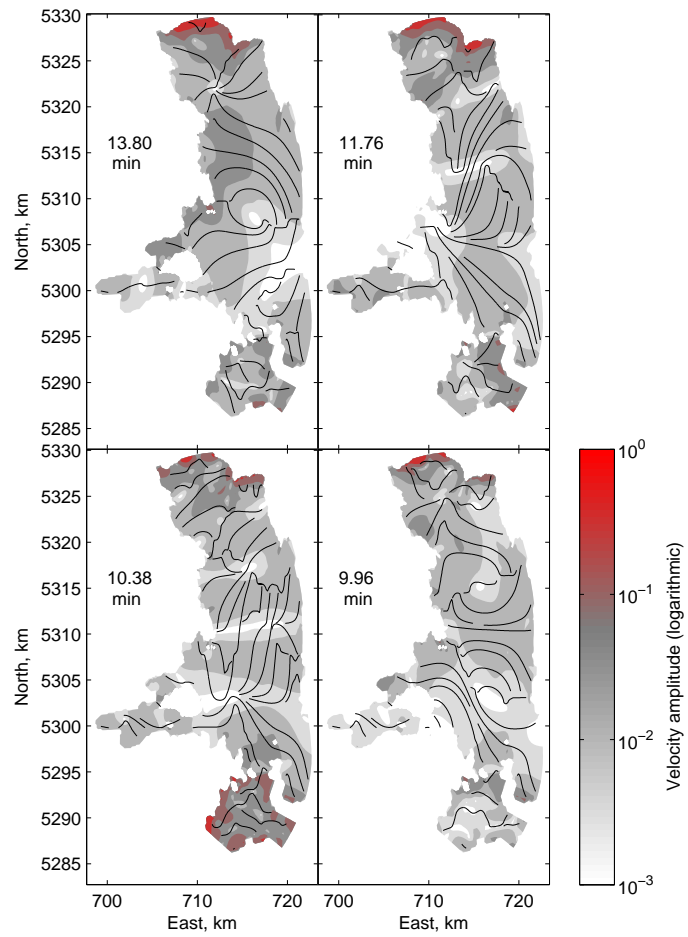


Figure S2: Lake surface oscillations at a single point in the middle of the lake produced by the model (blue solid line) and restored from the 12 harmonics (modes) of the Fourier analysis (red dashed line).

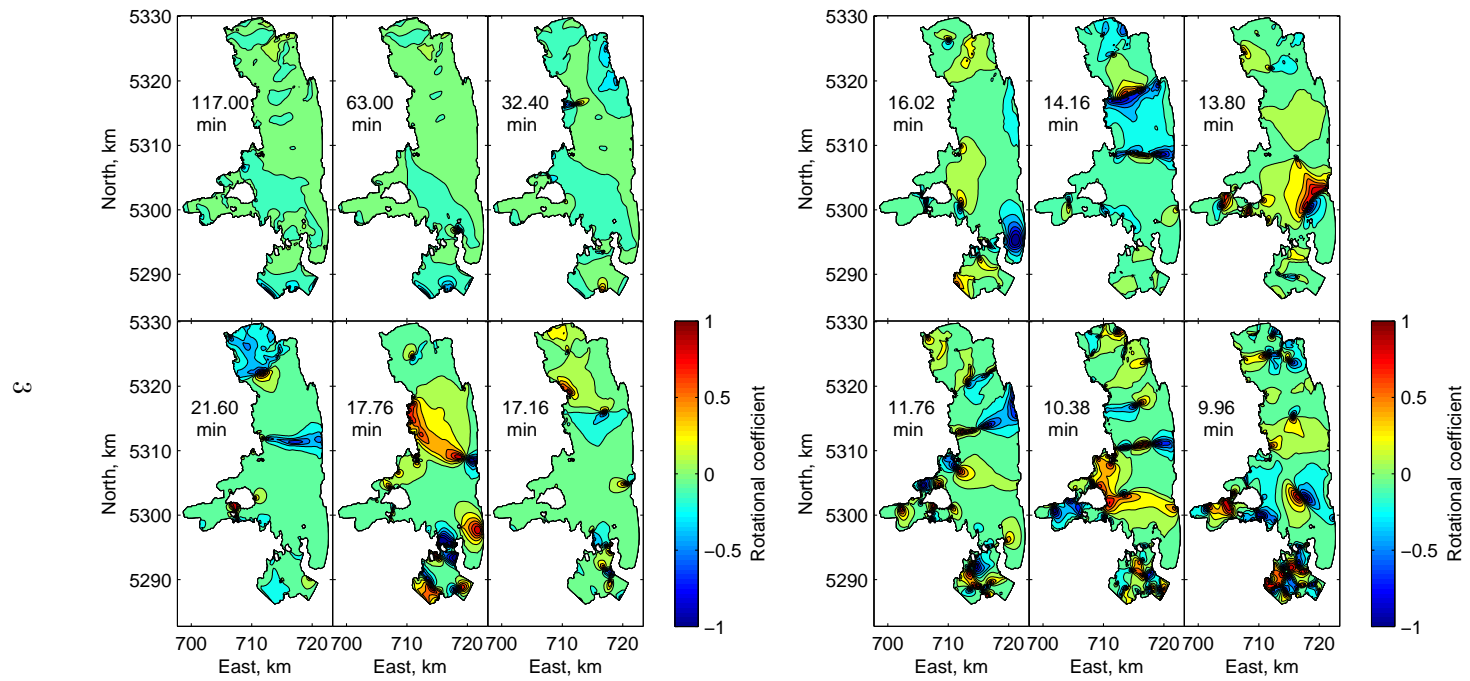


Figure S3: The synthetic maximum spectrum of modeled lake surface oscillations. Significant peaks are marked with circles subscribed with corresponding seiche periods in min.

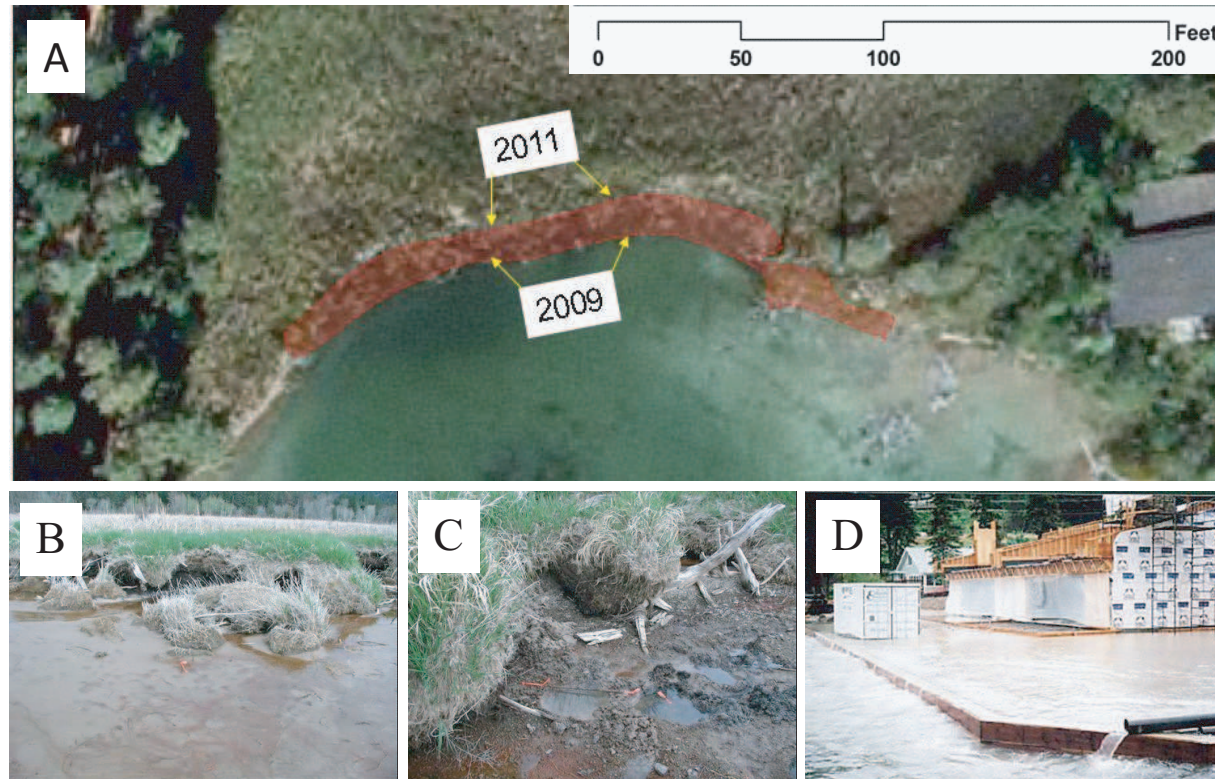


Figure S4: The synthetic maximum spectrum of modeled lake surface oscillations. Significant peaks are marked with circles subscribed with corresponding seiche periods in min.