

We thank the editor Prof. Baldassarre and the two anonymous reviewers for their careful evaluation of our manuscript, the positive feedback, and their comments which helped to further improve the manuscript. Below our detailed response to the comments listing all changes made to the manuscript:

- 1) When checking once again all the references for the data contained in our dataset we found a mistake in our database for the country of South Africa and year 1921. An irrigated area, reported in the data source in acres (572003 acres) was introduced into our database in hectares (572003 ha) without converting the units. Although this single mistake does not change our conclusions we corrected this mistake as part of the revision process to ensure that the final versions of the manuscript and of the corresponding dataset are free of any mistakes to our best knowledge. Consequently, area equipped for irrigation in South Africa changed because of the adjustment for year 1921 for period 1900 - 1960. After correction of the mistake in the dataset we updated several figures and tables in the manuscript accordingly:

---

Figures, Tables and Supplements updated

---

Figure 1  
Figure 3  
Figure 4B, 4F, 4H  
Figure 5A, 5D, 5G  
Figure 7A, 7B, 7C, 7D  
Figure B1  
Figure B2A, B2B, B2C, B2D  
Figure S5A, S5D, S5G, S5J, S5M, S5P, S5S, S5V  
Table 1  
Table A1  
Table A2  
Supplement S1  
Supplement S3  
Supplement S5  
Supplement S6 => now Supplement S7

---

- 2) **Editor comment:** „Hence, I think that would be worth considering to briefly discuss in the revised paper possible links (if any) to socio-hydrology.“

**Response:** We added a link to socio-hydrology in section 4.4 of the manuscript where we describe the recommended use of the data, references to Baldassarre et al. (2013) and Sivapalan et al. (2014) are made and the references were added to the list of references. The following section was added to the manuscript (page 27, lines 855-869): *“Despite the uncertainties and limitations described before we are convinced that application of HID will improve model results in many fields of research, e.g. for all applications that hitherto used the national scaling approach so far to derive trends in irrigated land (examples are described in Section 1). In addition, the data set may also be used in socio-hydrological research (Baldassarre et al., 2013; Sivapalan et al., 2014) to study two-way interactions between humans and water resources or in sustainability research more generally. One advantage of HID is that trends in irrigated land are determined by the official land use data and therefore implemented independently from trends in socio-economic variables, such as GDP, prices, or*

*population density which makes it possible to study interactions between the extent of irrigated land and socio-economic development. For studying relationships with physical properties, such as soil suitability, slope or climate it is however recommended to use the subnational inventory of historical statistics (AEI\_SU) or the gridded products based on EARTHSTAT historical cropland extent because some relationships with physical variables have been used to develop the HYDE cropland data set (Klein Goldewijk et al., 2011) so that our gridded products based on HYDE are not completely independent of these variables."*

- 3) **Comment reviewer #1:** „The authors state that it is tough to compare with independent material. Although this is recognized, it still seems a bit strange that only for western USA other independent maps could be found. Surely there must be maps for other parts in the world, Europe, India, China? For example, they refer in section 2.3.1, 2nd paragraph to maps from Achtnich, Framji, Highsmith and Whitbeck and further on the page to ‘previous studies from Puma and Cook, Wisser, Yoshikawa’ without telling to what regions/countries this applies.“

**Response:** We added a second comparison of our new HID dataset for year 1960 to a global irrigation map published by Highsmith (1965). The maps shown in Achtnich and Framji are more recent (published between 1981-1984); therefore we preferred adding the comparison to Highsmith (1965). The other studies mentioned (Puma and Cook, Wisser, Yoshikawa) used the national scaling approach based on FAO data (as described in lines 378-381). Since we already compare our gridded products to products obtained with the national scaling approach (Figures 4, 6), it was not required to add a separate comparison with these products to the manuscript.

The scattered small scale irrigation shown on the map published by Highsmith (1965) is only visible at very high resolution. Therefore we added the map comparison as a new supplement (now Supplement S6) instead of showing the figure as part of the main text. The former Supplement S6 was renumbered to Supplement S7 and the sections 2.3.1 and 4.1 in the manuscript were modified to include this new comparison:

Section 2.3.1, page 12, lines 363-367: *“We found two historical maps showing the major irrigation area in the western part of the USA in year 1909 (Whitbeck, 1919) and year 1911 (Bowman, 1911) and compared our 5 arc-minute irrigation map for year 1910 visually with these two maps. In addition, we compared our map to a global map showing the extent of the major irrigation areas and interspersed irrigated land beginning of the 1960s (Highsmith, 1965).”*

Section 4.1, pages 20 and 21, lines 636-663: *“A comparison of the HID for year 1960 with a historical global irrigation map (Highsmith, 1965) shows, however, that the main irrigation areas shown in the historical global map are also present in the HID (Supplement S6). A very good agreement of the historical irrigation map ((Highsmith, 1965) and our gridded product for year 1960 (AEI\_HYDE\_FINAL\_IR) was found for the major irrigation areas in the Central Valley in California, along the Yakima River in Washington, at the High Plains Aquifer in Texas, along the Colorado River and the Rio Grande (United States, Mexico), in Alberta (Canada), the Pacific Coast and along Rio Lerma in Mexico, in Honduras and Nicaragua, in Peru, Chile and Argentina, in Spain, along the French Mediterranean coast, in Northern Italy, Bulgaria and Romania, along the Nile River in Egypt and Sudan, in South Africa and Zimbabwe, in the Euphrates-Tigris region and the Aral Sea basin, in Azerbaijan, Pakistan, North India*

and East India, in the area around Bangkok (Thailand), in Vietnam, Taiwan, North Korea, South Korea and Japan, in the North China Plain, on the island of Java (Indonesia), in the Murray Darling Basin (Australia) and on the Southern Island of New Zealand (Supplement S6). However, there are also some regions that show differences in the two products. For example, the map published by Highsmith (1965) shows very little irrigation in the Eastern United States, Northern and Central Europe, Portugal, Southwest and Northern France, Southern Brazil, the Fergana Valley in Uzbekistan, the interior of Turkey, Western China and Sumatra (Indonesia) while the subnational statistics used to develop the HID indicate that there was irrigation already developed at this time (Supplement S6). For other regions, such as Northeast Brazil or Namibia, the extent of irrigated land seems to be larger in the historical drawings relative to the newly developed HID (Supplement S6). The general impression from the comparison of the two map products is that there is a very good agreement for most of the major irrigation areas while there is less agreement for the minor irrigation areas. Some of the differences may be related to difficulties with drawing interspersed small scale irrigation on the historical maps. In other cases it may be that the newly developed HID shows irrigation in areas where infrastructure was not developed at this time, e.g. because the resolution of the subnational irrigation statistics was not sufficient.”

- 4) **Comment reviewer #1:** „The authors use the following leading principles (which do make sense to me), but are very hard to check whether they are in fact true: - Use of aridity-index as proxy for irrigated or rainfed rice areas determination – Logical order of historical irrigation : took most likely place at place where current irrigation takes place as well, cropland more likely to be irrigated than pasture, and pasture is more likely irrigated than non-agric land.“

**Response:** We agree that it is hard to test these basic assumptions. However, we describe our assumptions very clearly and transparently in the manuscript (Section 2.2, lines 315-319; Figure 2) and we discuss potential limitations in section 4.4, pages 25-26, lines 798-807: *“The assumptions and rules used in the disaggregation to 5 arc-minute resolution (Figure 2) may not be appropriate for all the countries and time steps. For specific countries such as Australia, New Zealand, or Switzerland it is known, for example, that irrigation has been used mainly for grassland or fodder; therefore, the rule to preferentially assign irrigation to cropland (S1, S5, S7 in Figure 2) resulted in incorrect assignment of irrigation in some places. The disaggregation could therefore be improved by applying country-specific disaggregation rules; these rules should also be time specific to reflect time-varying differences in irrigation infrastructure development across regions. However, the country specific information on the historical development of irrigation was insufficient to develop these rules for this global scale study.”*

- 5) **Comment reviewer #1:** „In some cases they state that the estimated area of irrigated land is greater than the historical estimates of HYDE. Subsequently, they adjust their estimates. I would like to point out that the estimates of HYDE are also rather uncertain in some areas for some time periods, thus this could mean that the authors estimate for irrigated land can be true after all. However, they correctly address the uncertainties attached to this method in section 4.4. and also issue a warning about the use of this dataset.“

**Response:** The adjustments mentioned by the reviewer were made for the products AEI\_HYDE\_LOWER\_CP, AEI\_HYDE\_FINAL\_CP, AEI\_HYDE\_UPPER\_CP only but not for the other products. The adjustments were required to maximize consistency of these products to HYDE land use. Since we cannot change the HYDE land use product itself that we used as an input, the only way to achieve consistency was to adjust our data on AEI. However, the differences between the gridded products caused by these adjustments were very minor (e.g. see Table 1, Figure 4).

- 6) **Comment reviewer #1:** „Figure 4 - 8 are very small, need to zoom in quite a lot, on paper it's not readable. Figure B1: ok (why change into B1 and B2?, why not figure 9 and 10?) Figure B2: I'm having a hard time to understand this figure. Difference to mean? what mean?“

**Response:** We created high resolution versions of figures 4-8 and contacted the reproduction office to make sure that the final layout of the manuscript will contain the figures in high resolution. We added figures B1 and B2 as appendix to avoid an overload because there are already 8 figures with up to 15 panels in the main text. Figure B2 was revised to accommodate easier understanding. We changed the panel captions, created a legend with one column and four lines, increased the width of the lines shown in the figure, and modified the figure caption.

- 7) **Comment reviewer #2:** „Given the coarse resolution and perhaps uncertainty of AEI in the dataset, could the authors highlight again who can benefit from and make use of this dataset? Do the end-users have to pay special attention when they try to use this dataset? What are the limitations when the dataset is applied in different fields? Given data availability differs from country to country, the dataset is likely associated with different level of uncertainty from one country to another. Due to this inconsistency, therefore, could this dataset be used for the purpose such as studying the global changes due to irrigation? I noticed the authors have mentioned this issue in section 4.4, so the question is how do we understand this inconsistency in terms of uncertainty and how do we deal with it?“

**Response:** Section 4.4 was revised to account for this reviewer comment; we also changed the order of paragraphs in the section to ensure that information flows fluently after application of the changes (pages 26-27, lines 816-869): *“Because of differences in AEI at the grid cell level among the gridded products we suggest that more than one specific gridded product should be used in typical applications such as global hydrological modelling to get a better understanding of differences in model outputs caused by using different input data. We cannot make a general recommendation on which HID product may be most appropriate for different applications or represents patterns in AEI in a region better at this stage. When complete coverage of the global irrigation extent is most important, use of AEI\_HYDE\_FINAL\_IR or AEI\_EARTHSTAT\_IR is recommended. When, in contrast, consistency with cropland or pasture data is more important, the corresponding CP-product (AEI\_HYDE\_LOWER\_CP, AEI\_HYDE\_FINAL\_CP, AEI\_HYDE\_UPPER\_CP, AEI\_EARTHSTAT\_CP) may be more appropriate.*

*We are unable to quantify the uncertainties in our map because this would require defining error ranges and probabilities for each specific source of uncertainty, e.g. all the sources used as input. However, we expect that uncertainties are scale dependent with higher uncertainty for specific grid cells than for entire countries or the whole globe and that estimates for specific years are less certain than trends for longer time*

periods. Therefore, we recommend application of the data set mainly for global-scale research or for continental studies. Use of the data set for studies constrained to single countries is only suggested after carefully checking the resolution and origin of the input data used for the specific country (Supplement S1), checking the assumptions made to fill data gaps (Supplement S1), and testing whether the rules and assumptions made in the downscaling (Figure 2) are appropriate for that specific case.

The data set presented in this study shows AEI and we need to highlight that the spatio-temporal patterns in the development of AEI cannot directly be translated into patterns in area actually irrigated (AAI), information that is required for many applications. The main reason is that the percentage of AEI that is actually used for irrigation differs across countries (Siebert et al., 2010; Siebert et al., 2013). In addition, interannual variability in AAI is higher than that in AEI because the area that is actually irrigated in a specific season also depends on the specific weather conditions (supplementary irrigation) or on the performance of the water supply infrastructure (in particular in arid regions). Data on the percentage of AEI that is actually being used for irrigation, e.g. provided by GMIA5 (Siebert et al., 2013) for year 2005 could be used as a starting point for long-term studies but modification would be required for historical years to account for dynamics in construction and abandonment of irrigation infrastructure. The same applies to irrigation water use. A study on global groundwater depletion, in which hydrological modelling was combined with groundwater well observations and total water storage trends from GRACE, found that independent estimates of groundwater depletion could best be simulated by the model if it is assumed that farmers in groundwater depleted areas only use ~70% of the optimal irrigation water volume (Döll et al., 2014). However, it is not known whether this reduction in water use was achieved by reducing AAI or by reducing irrigation water application on AAI.

Despite the uncertainties and limitations described before we are convinced that application of HID will improve model results in many fields of research, e.g. for all applications that hitherto used the national scaling approach so far to derive trends in irrigated land (examples are described in Section 1). In addition, the data set may also be used in socio-hydrological research (Baldassarre et al., 2013; Sivapalan et al., 2014) to study two-way interactions between humans and water resources or in sustainability research more generally. One advantage of HID is that trends in irrigated land are determined by the official land use data and therefore implemented independently from trends in socio-economic variables, such as GDP, prices, or population density which makes it possible to study interactions between the extent of irrigated land and socio-economic development. For studying relationships with physical properties, such as soil suitability, slope or climate it is however recommended to use the subnational inventory of historical statistics (AEI\_SU) or the gridded products based on EARTHSTAT historical cropland extent because some relationships with physical variables have been used to develop the HYDE cropland data set (Klein Goldewijk et al., 2011) so that our gridded products based on HYDE are not completely independent of these variables.”

#### 8) Other changes made:

- Reference Yoshikawa et al. (2013) was changed to Yoshikawa et al. (2014) because the paper has recently been published by HESS.

- The reference Frenken and Gillet (2013) was corrected to Frenken and Gillet (2012).
- We added references to work published recently during the review process of this manuscript, namely to Hoogeveen et al. (2015), Salmon et al. (2015), Steffen et al. (2015), West et al. (2014), and Zhu et al. (2014).
- The DOI of the dataset was changed to the DOI of version 1.0 of the HID.
- A short conclusions section was added to the manuscript.

**As requested, we attached to this response letter a version of the manuscript with tracked changes indicated in red.**

# A global dataset of the extent of irrigated land from 1900 to 2005

S. Siebert<sup>1,\*</sup>, M. Kummu<sup>2,\*</sup>, M. Porkka<sup>2</sup>, P. Döll<sup>3</sup>, N. Ramankutty<sup>4</sup>, B. R. Scanlon<sup>5</sup>

[1] {Institute of Crop Science and Resource Conservation, University of Bonn, Germany}

[2] {Water & Development Research Group, Aalto University, Finland}

[3] {Institute of Physical Geography, University of Frankfurt (Main), Germany}

[4] {Liu Institute for Global Issues and Institute for Resources, Environment, and Sustainability, University of British Columbia, Canada}

[5] {Bureau of Economic Geology, Jackson School of Geosciences, University of Texas, Austin, USA}

[\*] These authors contributed equally to this work.

Correspondence to: Stefan Siebert ([s.siebert@uni-bonn.de](mailto:s.siebert@uni-bonn.de)) or Matti Kummu ([matti.kummu@aalto.fi](mailto:matti.kummu@aalto.fi))

## Abstract

Irrigation intensifies land use by increasing crop yield but also impacts water resources. It affects water and energy balances and consequently the microclimate in irrigated regions. Therefore, knowledge of the extent of irrigated land is important for hydrological and crop modelling, global change research, and assessments of resource use and management. Information on the historical evolution of irrigated lands is limited. The new global Historical Irrigation Dataset (HID) provides estimates of the temporal development of the area equipped for irrigation (AEI) between 1900 and 2005 at 5 arc-minute resolution. We collected subnational irrigation statistics from various sources and found that the global extent of AEI increased from 63 million ha (Mha) in 1900 to 111~~2~~ million Mha in 1950 and 306 Mha in 2005. We developed eight gridded versions of time series of AEI by combining subnational irrigation statistics with different data sets on the historical extent of cropland and pasture. Different rules were applied to maximize consistency of the gridded products to subnational

irrigation statistics or to historical cropland and pasture data sets. The HID reflects very well the spatial patterns of irrigated land ~~as shown on historical maps for the western United States (around year 1900) and on a global map (around year 1960) in the western United States as shown on historical maps~~. Mean aridity on irrigated land increased and river discharge decreased from 1900 – 1950 whereas aridity decreased from 1950 – 2005. The dataset and its documentation are made available in an open data repository at <https://mygeohub.org/publications/8> (DOI: ~~10.13019/M2059940.13019/M2MW2G~~).

## 1 Introduction

Since the beginning of crop cultivation, irrigation has been used to reduce crop drought stress by compensating for low precipitation. In rice cultivation irrigation is also used to control the water level in the paddy fields and to suppress weed growth. Crop yields are therefore higher in irrigated agriculture than in rainfed agriculture, often by a factor of 2 or more (Bruinsma, 2009; Colaizzi et al., 2009; Siebert and Döll, 2010). In many regions, irrigation is required to grow an additional crop in the dry season and therefore helps to increase land productivity. Around the year 2000, about 43 percent of global cereal production was harvested on irrigated land whereas eliminating irrigation would reduce cereal production by ~20 percent (Siebert and Döll, 2010). To achieve this gain in agricultural production, large volumes of freshwater are consumed and consequently, irrigation represents the largest anthropogenic global freshwater use. Estimates of total water withdrawal for irrigation range from 2217 to 3185 km<sup>3</sup> yr<sup>-1</sup> (Döll et al., 2012; Döll et al., 2014; Frenken and Gillet, 2012; ~~Hoogeveen et al., 2015~~; Wada et al., 2011; Wada et al., 2014) and additional crop evapotranspiration ranges from 927 to 1530 km<sup>3</sup> yr<sup>-1</sup> (Döll et al., 2014; Hoff et al., 2010; Wada et al., 2014). Globally, irrigation accounts for about 60% of total fresh water withdrawals and 80% of total fresh water consumption (Döll et al., 2014). To ensure water supply for irrigation, a large infrastructure of man-made reservoirs (Lehner et al., 2011), channels, pumping networks and groundwater wells is required, markedly modifying global fresh water resources, negatively impacting ecologically important river flows (Döll et al., 2009; ~~Steffen et al., 2015~~) and depleting groundwater (Döll et al., 2014; Konikow, 2011). These impacts raise concerns about the sustainability of water extraction for irrigation (Gerten et al., 2013; Gleeson et al., 2012; Konikow, 2011; Lehner et al., 2011; ~~West et al., 2014~~). Irrigation of agricultural land also has major impacts on the temperature in the crop canopy and crop heat stress (Siebert et al., 2014) and regional climate and weather conditions by changing water and energy balances (Han et al., 2014). Increased evapotranspiration due to irrigation results in surface cooling and



considerable reduction in daily maximum temperatures (Kueppers et al., 2007; Lobell et al., 2008; Puma and Cook, 2010; Sacks et al., 2009). These impacts on water and energy balances are considered to affect the dynamics of the South Asian Monsoon (Saeed et al., 2009; Shukla et al., 2014) while a large part of the increased evapotranspiration being recycled to terrestrial rainfall also affects non-agricultural biomes and glaciers (Harding et al., 2013).

Because of the diverse impacts of irrigation and its importance for food security and global change research, many assessments require knowledge about where cropland is irrigated and how the spatial pattern of irrigated land has changed over time. Understanding the past evolution of irrigated regions may also improve projections of future irrigation required to meet rising food demands. High-resolution datasets on the extent of irrigated land have been developed at global (Salmon et al., 2015; Siebert et al., 2005; Thenkabail et al., 2009) and ~~continental-regional~~ scales (Ozdogan and Gutman, 2008; Siebert et al., 2005; Wriedt et al., 2009; Zhu et al., 2014) for a certain historic time period but little is known about spatio-temporal changes in irrigated land at large scales. The statistical database FAOSTAT of the Food and Agriculture Organisation (FAO) of the United Nations (FAO, 2014b) includes annual data on ~~-~~area equipped for irrigation (AEI) at the country level for the period since 1961. This information and data collected from many other sources were harmonized to develop an annual time series of AEI per country for the period 1900-2003 (Freydank and Siebert, 2008).

Since then, these country-level time series have been used in many global change studies to describe effects of irrigation on various parts of the global water and energy cycles, such as river discharge, water withdrawals, water storage changes, evapotranspiration or surface temperature (Biemans et al., 2011; Döll et al., 2012; Gerten et al., 2008; Haddeland et al., 2007; Pokhrel et al., 2012; Puma and Cook, 2010; Wisser et al., 2010; Yoshikawa et al., 2014~~3~~). The method used in these studies to estimate the spatial pattern of irrigated land over historical time periods was to multiply current values of AEI in each grid cell of a country (Siebert et al., 2007; Siebert et al., 2005) by a scaling factor computed from the time series of AEI per country, from either FAO (2014b) or Freydank and Siebert (2008). This scaling method may result in considerable inaccuracies, in particular for large countries such as the USA, India, China, Russian Federation or Brazil, because changes in the spatial pattern of irrigated land within countries are not represented. Another disadvantage is that the historical extent of irrigated land generated in this way is not consistent with other historical datasets of agricultural land use, e.g. extent of cropland or pasture. For studies requiring such

consistency, e.g. on crop productivity or water footprints, several adjustments were required (Fader et al., 2010).

Objectives of this study were to improve the understanding of the historical evolution in the extent of irrigated land by i) developing a new data set of subnational statistics on AEI from 1900 to 2005, with 10-year steps until 1980 and 5-year steps afterward, and ii) developing and applying a methodology to derive gridded AEI (spatial resolution 5 arc-minute by 5 arc-minute,  $\sim 9.2 \text{ km} \times 9.2 \text{ km}$  at the equator) that are consistent with subnational irrigation statistics and with existing global spatial data sets on cropland and pasture extent using a hindcasting methodology starting with present-day global irrigation maps. Considering the high level of uncertainty in the data, we did not develop a best estimate time-series of gridded AEI but instead developed eight alternative products (Table 1). In addition, we analysed the derived products to identify differences in the development of AEI in arid regions, humid or sub-humid rice production systems, and other humid or sub-humid regions, and estimated changes in mean aridity and mean river discharge in AEI as indicators of changes in water requirements and freshwater availability.

The data set of subnational statistics on AEI since year 1900 and the derived gridded versions at 5 arc-minute  $\times$  5 arc-minute resolution form the Historical Irrigation Dataset (HID), which is made available as Supplements S1-S7<sup>6</sup> at <https://mygeohub.org/publications/8> (DOI: [10.13019/M2059940.13019/M2MW2G](https://doi.org/10.13019/M2059940.13019/M2MW2G)).

## 2 Materials and methods

### 2.1 Development of a spatial database of subnational irrigation statistics

An extensive amount of statistical data from multiple sources, such as national agricultural census information or international databases (e.g. FAOSTAT), were collected to develop the historical irrigation dataset. The input data varied in scale (extent and resolution), completeness, reference years and terminology. To develop a joint database with global coverage, high spatial resolution, and consistent terminology, the input data had to be combined and harmonized. Below we describe the terminology, data and methods used to develop a global database of subnational statistics on the extent of AEI for 1900-2005.

#### 2.1.1 Terminology

The time series developed in this study refers to the AEI, i.e. the area of land that is equipped with infrastructure to provide water to crops. It includes area equipped for full/partial control

irrigation, equipped lowland areas, and areas equipped for spate irrigation (FAO, 2014a) but it excludes rainwater harvesting. AEI is reported in many national census databases and international databases such as FAOSTAT (FAO, 2014b), Aquastat (FAO, 2014a) or Eurostat (European Commission, 2014). For several countries with large extent of irrigated land (e.g. USA, India, Pakistan, Australia), statistics on AEI are not available because the corresponding national data centres only collect data on the area actually irrigated (AAI) during the year of the survey. In those cases AEI is often estimated based on AAI. AAI can be much lower than AEI when a part of the irrigation infrastructure is not used, e.g. because the land is left fallow or because rainfed crops are cultivated. In the Natural Resource Inventory of the USA, for example, areas are considered irrigated when irrigation occurs during the year of inventory, or during  $\geq 2$  of the 4 years prior to the inventory (U.S. Department of Agriculture, 2009). This resulted in an estimate of irrigated land for year 2007 that is 31% larger than AAI reported by the agricultural census for the same year.

To ensure categorical consistency in reported variables, international databases such as Aquastat (FAO, 2014a) use similar methods to estimate AEI for countries where only AAI is available. In contrast, historical irrigation statistics or historical reports often simply refer to “irrigated land” without defining the term; therefore, comparisons with other data sources and knowledge of the statistics system in the corresponding country are required to infer whether AAI or AEI is meant. Although AAI differs from AEI, we also used statistics on AAI to develop this inventory because trends in AEI are often similar to trends in AAI. Furthermore, data on AAI at high spatial resolution were used to estimate the spatial pattern in AEI when AEI was only available at low resolution. The methods used to estimate AEI based on AAI are described below (Section 2.1.3).

#### 2.1.2 Description of input data and sources of information

To develop the spatial database of subnational irrigation statistics, we combined subnational irrigated area statistics with consistent geographic data describing the administrative unit boundaries. Major sources of historical statistics on AEI include the FAO databases Aquastat (FAO, 2014a) and FAOSTAT (FAO, 2014b). Both databases report AEI since 1961. While Aquastat only reports data for years with national surveys, FAOSTAT also contains expert estimates to fill the gaps between national surveys. FAOSTAT only contains data at the national level while Aquastat also reports data at the subnational level. Another international database used in this study was Eurostat (European Commission, 2014) containing data on AEI (referred to as “irrigable area” in this database) for the European countries at subnational

level. Data for the years 1990, 1993, 1995, 1997, 2000, 2003, 2005, and 2007 were extracted from this database.

In addition to these international databases, we also used data collected in national surveys and derived from census reports or statistical yearbooks for most of the countries because the spatial detail is often higher in national data sources than in the international databases. For the period before 1950 availability of national census data on AEI was limited to a few countries. Therefore, we also used secondary sources from the literature, e.g. scientific publications or books with reported data from primary national sources.

Many of the irrigation statistics for year 2005, as the starting point of the hindcasting, were derived from the database used to develop version 5 of the Global Map of Irrigation Areas (GMIA5). This data set, which is described in detail in Section 2.2.1, contains several layers describing AEI, AAI and the water source for irrigation at a global scale in 5 arc-minute resolution (Siebert et al., 2013). We used the data layer on AEI for downscaling the irrigation statistics to 5 arc-minute grid cells (see Section 2.2); therefore, the subnational irrigation statistics used to develop the GMIA5 dataset were automatically incorporated into this historical irrigation dataset. However, for many countries, the subnational irrigation statistics used to develop the GMIA5 dataset, referred to a year different from 2005. Therefore, the difference between AEI in the year taken into account in GMIA5 and the year 2005 was derived from other sources, e.g. FAOSTAT, Eurostat or data derived from national statistical offices. For most of the years, between 50 and 75 percent of the global AEI was derived from sub-national statistics, most of it provided by reports of national surveys (Figure 1). The data sources are described in detail for each country and time step in Supplement S1.

To map the reported AEI and to use the data in the downscaling to 5 arc-minutes (described in Section 2.2) it was necessary to link the irrigation statistics to geographic data describing the boundaries of the administrative units. We used version 1 of the Global Administrative Areas database GADM (GADM.org, 2009) for this purpose. Because GADM refers to the current administrative units, the shapefile had to be modified with the administrative unit boundaries for each time step, taking into account the historical changes in the administrative setup. Boundaries had to be adjusted at the sub-national level (e.g. federal states, districts, provinces) but many country boundaries changed as well. For sub-national level changes we used information obtained from the “Administrative Subdivisions of Countries” database (statoids.com) that lists the changes in administrative divisions of countries. To adjust country boundaries, e.g. for the Indian Empire or Germany, we used historical maps to create the

administrative area boundaries for the available data. For each time step we created a unique administrative boundary layer, depending on the level of data available for each country and changes in administrative units. These layers were converted to grids with 5 arc-minute resolution and are provided as Supplement S2.

### 2.1.3 Methods used to harmonize data from different sources

For most of the countries we used data derived from different sources with different temporal and spatial resolution and sometimes different definitions used for irrigated land which resulted in inconsistencies among the input data sets (Supplement S1). Moreover, national irrigation surveys were often undertaken for years that differ from the time steps used in this inventory. This resulted in data gaps, which needed to be filled by interpolation or scaling. Therefore, it was important to harmonise the data, particularly within a country but among countries also. The three main harmonising procedures were: i) data type harmonising, ii) temporal harmonising, and iii) infilling data gaps. These procedures are briefly introduced below with detailed information in Supplement S1 on procedures, assumptions, and data sources used for each country and time step.

*Data type harmonising* was used when statistics referred to terms different from the definition used in this inventory for AEI. One example is China where the irrigated area reported in statistical yearbooks refers to the so called “effective irrigation area” which includes annual crops but excludes irrigated orchards and pasture. In these situations we used the closest time step in which we had both data, AEI and the “effective irrigation area” or other terms used in original data sources, to calculate a conversion factor. This conversion factor was then applied at the subnational level assuming that the ratio between AEI and the term reported in the original data source did not change over time. For other countries, e.g. Argentina, Australia, India, Syria, USA, or Yemen, the national databases referred to AAI. AEI was then estimated as the maximum of the AAI reported at high spatial resolution (e.g. county or district level) for different years around the reference year. Again a conversion factor (estimated AEI divided by reported AAI for the reference year) was calculated and applied to estimate AEI based on reported AAI for historical years. Data sources and procedures to estimate or derive AEI and AAI for each country around year 2005 are described in detail in the report documenting the development of GMIA5 (Siebert et al., 2013) while the method used for data type harmonising in historical years is described in Supplement S1.

*Temporal harmonising* was used when the input data did not exactly correspond with the predefined time steps and thus, data needed to be interpolated between years to match with the exact year in question. For this purpose we used a linear interpolation between the two closest data points on each side of the time step in question.

*Filling of data gaps* was required when irrigation statistics were not available either for a specific time step or for the time step before or after. In this case we used, similar to the method applied for temporal harmonising, a linear interpolation between two existing data points or we estimated AEI based on other information (e.g. trend in AEI in neighbouring countries, trend in cropland extent). In cases where we had reliable data from a neighbouring country, where irrigation development is known to be similar to the country in question, we used the trend in the neighbouring country to scale the evolution of irrigation in that particular country. In some cases with gaps in sub-national data we used cropland extent development data to fill these gaps. We did this for example in China for years 1910-1930, where we used cropland development based on HYDE (Klein Goldewijk et al., 2011) to fill gaps in the sub-national dataset (Buck, 1937) that did not have information for all of the provinces in China.

## **2.2 Downscaling of irrigation statistics to 5 arc-minute resolution**

The spatial database of subnational irrigation statistics was developed as described in the previous section, including data on the AEI per country or sub-national unit and the corresponding GIS-data describing the administrative setup (boundaries of national or subnational units in each time step). To derive AEI on a 5 arc-minute resolution and thus the final product of HID, additional data were required. Further, we developed a downscaling method to spatially allocate changes in AEI for each time step.

### **2.2.1 Data used for downscaling**

As a starting point for the hindcasting in 2005 we used AEI data from GMIA5 (Siebert et al., 2013). This data set combines statistics on AEI for 36,090 subnational administrative units with a large number of irrigation maps or remote sensing based land use inventories. The reference year differed among countries, with about 90% of global AEI assigned according to statistical data from the period 2000-2008. By using GMIA5 as a starting point for the downscaling, the underlying data were automatically introduced into the HID.

One objective of the downscaling of subnational irrigation statistics (AEI\_SU) to 5 arc-minute resolution was to maximize consistency with other data sets on the historical extent of cropland and pasture. We demonstrate our method in this study by using cropland and pasture

extent derived from version 3.1 of the History Database of the Global Environment HYDE (<http://themasites.pbl.nl/tridion/en/themasites/hyde/index.html>) and by using the Earthstat global cropland and pasture data set developed by the Land Use and Global Environment Research Group at McGill University (<http://www.earthstat.org/>). Both data sets have a spatial resolution of 5 arc-minutes and cover the period 10,000 B.C. – 2005 A.D. (HYDE) or 1700 – 2007 (Earthstat). The hindcasting methodology developed in this study can be applied to any global historical dataset if the extent of cropland and pasture is reported for the time steps considered in this study.

The HYDE cropland data set was developed by assigning cropland reported in historical subnational cropland statistics to grid cells based on two weighting maps. One weighting map was based on satellite imagery and showed the cropland extent in 2000 while the second map was developed by considering urban built-up areas, population density, soil suitability for crops, extent of coastal areas and river plains, slope, and annual mean temperature. The influence of the satellite map (first weighting map) increased gradually from 10000 B.C. to 2005 A.D. while the impact of the second weighting map declined over time (Klein Goldewijk et al., 2011). Allocation of pasture to specific grid cells was similar but the second weighting map considered additional information on the biome type (Klein Goldewijk et al., 2011). To account for uncertainties in historical land use, mainly caused by assumptions on historical per capita cropland and pasture demand, the HYDE database also provides upper and lower bounds on cropland and pasture use. Consequently, we used three HYDE versions as input data for our historical irrigation database: the best guess called HYDE\_FINAL and the upper and lower estimates HYDE\_UPPER and HYDE\_LOWER resulting in separate gridded products of our historical irrigation database.

The Earthstat Global Cropland and Pasture Data 1700-2007 represents a complete revision of the historical cropland data set developed previously at the Center for Sustainability and the Global Environment (SAGE) at University of Wisconsin-Madison (Ramankutty and Foley, 1999). Based on remote sensing data and land use statistics, a cropland and pasture map for 2000 was created (Ramankutty et al., 2008). Historical (and future) changes in cropland and pasture extent were then estimated using a simple scaling approach that combined the maps for year 2000 with historical (and future) subnational cropland and pasture extent statistics and estimates, using the same method as Ramankutty and Foley (1999). The data have been made available by the Earthstat group (<http://www.earthstat.org/>). In the subsequent sections we refer to the data set as EARTHSTAT.

## 2.2.2 Description of downscaling method

The objective of the downscaling procedure was to assign AEI to 5 arc-minute grid cells and to ensure that the sum of the AEI assigned to specific grid cells is similar to the area equipped for irrigation reported by the subnational statistics for the corresponding subnational administrative unit and year. In addition, we wanted to ensure that for each grid cell AEI did not exceed the sum of cropland and pasture extent in that year. Further, irrigated land in the past is preferably assigned to grid cells where we find it presently. However, it was impossible to generate layers of historical irrigation extent that were completely consistent with both the historical irrigation statistics and the historical cropland and pasture maps because of differences in methodology, input data and assumptions used to generate the HID and the historical cropland and pasture maps. For some administrative units and years, for example, AEI is larger than the sum of cropland and pasture extent. Because of spatial mismatch between AEI and agricultural land, these inconsistencies are even larger at the grid cell level. In many grid cells, AEI according to the GMIA5 exceeds the sum of cropland and pasture area in year 2005 according to the two historical land use inventories.

To account for these inconsistencies we developed a step-wise approach to maximize the consistency with either the subnational irrigation statistics (AEI\_SU) or with the historical cropland and pasture data (Figure 2). Therefore, eight separate time series of gridded data were developed which differed with respect to the historical cropland and pasture data set used (HYDE\_LOWER, HYDE\_FINAL, HYDE\_UPPER or EARTHSTAT) and with regard to the consistency with either the subnational irrigation statistics (suffix\_IR) or with the historical land use (suffix CP) (Table 1, Figure 2).

The downscaling procedure marched back in time starting with year 2005. A 9-step procedure was repeated for each sub-national statistical unit, each year in the time series and each of the gridded products (Figure 2). For each step and grid cell, a maximum irrigation area  $IRRI_{max}$  was calculated according to the criteria described in Figure 2. The criteria were defined in a way that  $IRRI_{max}$  increased with each of the 9 steps by considering more and more areas outside the extent of irrigated land in the previous hindcasting time step. The basic assumptions underlying the rules shown in Figure 2 are that irrigated areas in historical periods are more likely to occur at places where irrigated areas are today, that irrigation of croplands is more likely than irrigation of pasture and that irrigation of pasture is more likely than irrigation of non-agricultural land.



322 In many administrative units the downscaling procedure terminated in the first step (Figure  
323 B1) because, for most of the countries, AEI was much lower in historical periods than it is  
324 today (Figure 3). Consequently,  $IRRI_{max}$  calculated for the first step had to be reduced to  
325 match the AEI reported for the administrative unit. The reduction was performed half in  
326 relative terms (equal fraction of cell specific  $IRRI_{max}$ ) and half in absolute terms (equal area in  
327 each grid cell). Performing half of the reduction as area equal for each grid cell ensured that  
328 cell specific AEI became 0 in many grid cells with little AEI in the previous time step and  
329 that, consequently, the number of irrigated grid cells declined in the hindcasting process.  
330 Different from the national scaling approach, the decrease of irrigated area in each grid cell is  
331 not the same within a subnational unit because in step 1 of the downscaling approach,  
332 information on cropland area in the grid cell at time  $t$  is also taken into account (Figure 2).

333 When the sum of  $IRRI_{max}$  in the administrative unit calculated for a specific step was less than  
334 the AEI reported in the historical database, AEI in each grid cell was set to  $IRRI_{max}$  and the  
335 routine proceeded to the next step. The procedure was terminated and the subsequent steps  
336 discontinued when the sum of  $IRRI_{max}$  in the administrative unit exceeded the  $AEI_{SU}$   
337 reported in the historical database. Half of the increment in AEI still required in the present  
338 step was assigned in relative terms (equal fraction of the grid cell specific  $IRRI_{max}$  after the  
339 previous step) and the other half of the required increment was assigned as an area equal for  
340 each grid cell. The downscaling procedure is explained in more in detail in Supplement S4  
341 where we describe the specific steps and calculations using seven examples.

342 The rules applied in specific steps of the downscaling procedure differed between gridded  
343 time series maximizing consistency with historical cropland and pasture and gridded time  
344 series maximizing consistency with  $AEI_{SU}$  (Figure 2). The gridded products maximizing  
345 consistency with historical cropland and pasture extent ( $AEI_{HYDE\_LOWER\_CP}$ ,  
346  $AEI_{HYDE\_FINAL\_CP}$ ,  $AEI_{HYDE\_UPPER\_CP}$ ,  $AEI_{EARTHSTAT\_CP}$ ) ensured that  
347 AEI was less than or equal to the sum of cropland and pasture extent, for each time step and  
348 grid cell. Therefore, the AEI in the gridded products is less than the AEI reported in the  
349 subnational statistics for administrative units in which  $AEI_{SU}$  exceeded the sum of cropland  
350 and pasture extent (Table 1). In the gridded products maximizing consistency with the  
351 historical irrigation statistics ( $AEI_{HYDE\_LOWER\_IR}$ ,  $AEI_{HYDE\_FINAL\_IR}$ ,  
352  $AEI_{HYDE\_UPPER\_IR}$ ,  $AEI_{EARTHSTAT\_IR}$ ) AEI can exceed the sum of cropland and  
353 pasture extent. Therefore, the AEI reported in the subnational irrigation statistics was  
354 completely assigned to the gridded products (Table 1), with the exception of a few

administrative units that were so small that they disappeared in the conversion of the administrative unit vector map to 5 arc-minute resolution grids (mainly very small islands).

## 2.3 Methods used to analyse the data set

### 2.3.1 Comparison of the historical irrigation database (HID) with other data sets and maps

Validation of HID against historical statistical data was not possible because all historical irrigation statistics available to us were used as input data to develop the HID. However, we compared our spatial database of subnational irrigation statistics to AEI reported in other inventories at the national scale to highlight the differences (FAO, 2014b; Freydank and Siebert, 2008).

We found two historical maps showing the major irrigation area in the western part of the USA in year 1909 (Whitbeck, 1919) and year 1911 (Bowman, 1911) and compared our 5 arc-minute irrigation map for year 1910 visually with these two maps. In addition, we compared our map to a global map showing the extent of the major irrigation areas and interspersed irrigated land beginning of the 1960s (Highsmith, 1965). A strict numerical comparison was not useful because the way irrigated land is shown on these maps is incompatible with our product. Historical irrigation maps include shapes of regions in which major irrigation development took place, resulting in a binary “yes or no” representation (see also the maps shown in Achtnich, 1980; Framji et al., 1981-1983; ~~Highsmith, 1965~~; Whitbeck, 1919). But even within the areas shown on these maps as irrigated there were sub-regions that were not irrigated (e.g. buildings, roads, rainfed cropland or pasture). In addition, many minor irrigation areas with small extent were not represented on these maps because of the limited accuracy of the historical drawings (Highsmith, 1965). In contrast, the gridded product developed in this study shows the percentage of the grid cell area that is equipped for irrigation and thus provides a discrete data type. Therefore a visual comparison was preferred to a numerical one. We also compared our new product (HID) to maps derived by multiplying the GMIA5 with scaling factors derived from historical changes in AEI at country level, as this procedure has been used in previous studies (Puma and Cook, 2010; Wisser et al., 2010; Yoshikawa et al., 2014~~3~~).

### 2.3.2 Gridded area equipped for irrigation in the different product lines

Differences in AEI across gridded products were evaluated by pair-wise calculation of cumulative absolute differences  $AD$  (ha) as

$$AD = \sum_{c=1}^n |AEI_{A_c} - AEI_{B_c}| \quad (1)$$

where  $AEI_{A_c}$  is the AEI in cell  $c$  and product A,  $AEI_{B_c}$  the AEI in cell  $c$  and product B and  $n$  is the number of grid cells. In addition, we calculated the relative difference  $RD$  (-) as the ratio between  $AD$  and total AEI in the corresponding year. To identify the reasons behind the differences we calculated the mean of AEI for each grid cell and year of the six HYDE products and the mean of the two EARTHSTAT products. Then we compared each of the six HYDE products to the HYDE mean, the two EARTHSTAT product lines to the EARTHSTAT mean and the two means across HYDE and EARTHSTAT products, respectively. In addition, we compared the mean across HYDE and the mean across EARTHSTAT to a grid obtained by multiplying the GMIA5 with scaling factors derived from historical changes in AEI at the country level (national scaling approach used in previous studies). These comparisons were undertaken at the native 5 arc-minute resolution while many potential applications of the HID (e.g. global hydrological models) often use a coarser resolution. Therefore, the historical irrigation maps were aggregated to a resolution of 30 arc-minutes where the sum of AEI in  $6 \times 6$  grid cells at 5 arc-minute resolution resulted in the AEI of one corresponding grid cell at 30 arc-minute resolution. All the pair-wise comparisons described were then repeated at 30 arc-minute resolution.

### 2.3.3 Irrigation evolution by irrigation category

We divided the irrigation areas of the world into three categories, namely i) irrigation in arid regions, ii) irrigation in humid or sub-humid rice production systems, and iii) irrigation in other humid or sub-humid regions (Figure 4A). Aridity was defined as the ratio between annual precipitation sum and annual sum of potential evapotranspiration (UNEP, 1997) derived from the CGIAR-CSI Global Aridity and PET Database (CGIAR-CSI, 2014; Zorner et al., 2008). In this paper, all regions with an aridity index less than 0.5 are termed "dry". Therefore, dry zones defined in this study include hyper arid, arid, and semi arid zones according to the classification used by UNEP (UNEP, 1997). Irrigated humid or sub-humid ("wet") rice production systems were defined by selecting grid cells with an aridity index greater than 0.65 and a harvested area of irrigated rice that was at least 30% of the total

harvested area of irrigated crops according to the MIRCA2000 data set (Portmann et al., 2010). To fill the gaps between grid cells that are not irrigated according to MIRCA2000 (but may have been irrigated in the past) we used a Euclidean allocation routine which assigned to each grid cell without irrigation the irrigated rice share of the nearest grid cell with irrigation. All the other grid cells were classified as “wet” and include humid or sub-humid regions in which irrigation is mainly used to increase crop yields by reducing drought stress during occasional dry periods. We calculated the change in AEI in the three zones at the global scale and in addition the number of people in the distinct irrigation zones based on the HYDE population density (Figure 4C) (Klein Goldewijk, 2005).

#### 2.3.4 Change in climatic water requirements and freshwater availability in areas equipped for irrigation

As a final step in analysing our gridded historical irrigation maps, we calculated the change in mean aridity and mean natural river discharge on irrigated land as indicators of changes in climatic water requirements and freshwater availability for irrigation. Global means were derived for both indicators. Mean aridity on irrigated land was computed by weighting cell-specific aridity with area equipped for irrigation within the cell as

$$\overline{AI} = \left( \sum_{c=1}^{n5} AI_c * AEI_c \right) / AEI \quad (2)$$

where  $\overline{AI}$  is the mean aridity index on irrigated land (-),  $AI_c$  is the aridity index in grid cell  $c$  derived from the CGIAR-CSI Global Aridity and PET Database (Figure 4E) (CGIAR-CSI, 2014; Zorner et al., 2008),  $AEI_c$  is the area equipped for irrigation in cell  $c$  (ha),  $AEI$  is the total area equipped for irrigation (ha) and  $n5$  is the number of 5 arc-minute grid cells with irrigation.

Similarly, mean natural river discharge on irrigated land  $\overline{Q}$  ( $\text{km}^3 \text{ yr}^{-1}$ ) was calculated as

$$\overline{Q} = \left( \sum_{c=1}^{n30} Q_c * AEI_c \right) / AEI \quad (3)$$

where  $Q_c$  is the mean annual river discharge in the period 1961-1990 (Figure 4G) ( $\text{km}^3 \text{ yr}^{-1}$ ) calculated with the global water model WaterGAP 2.2 (Müller Schmied et al., 2014) at a 30 arc-minute resolution by neglecting anthropogenic water extractions and by using GPCC precipitation and CRU TS3.2 (Harris et al., 2014) for the other climate input data, and  $n30$  is the number of 30 arc-minute grid cells with irrigation. To perform these calculations on a 30 arc-minute grid, the historical irrigation maps were aggregated as described in Section 2.3.2.

$\bar{Q}$  in this study refers to the entire river discharge that would be potentially available for the irrigated areas if there were no human water abstractions in the upstream basin.

### 3 Results

#### 3.1 Irrigation evolution over the 20th century

The pace of irrigation evolution can clearly be divided into two eras, with the year 1950 being the breakpoint. Prior to 1950, the AEI gradually increased, while since the 1950s the AEI increased extremely rapidly until the end of the century before somewhat levelling off within the first five years of the 21<sup>st</sup> century (Figure 3). According to the AEI\_SU of the HID database, the global AEI covered an area of 63 Mha in year 1900, nearly doubled to 111.2 Mha within the first 50 years of the 20<sup>th</sup> century and approximately tripled within the next 50 years to 306 Mha by year 2005 (Figure 3).

More variation can be seen in the historical trends when those are explored for regions or countries separately (Figure 3, Table A1). In many regions irrigation increased more rapidly (relative to year 1950) than the global average since the 1950s (most rapidly in Australia and Oceania, Southeastern Asia, Middle and South Africa, Central America, and Eastern Asia), while irrigation development has been much slower than the global average in North America and North Africa. AEI development in Eastern Europe and Central Asia is unique, with a slow decrease due to the collapse of the former irrigation infrastructure since 1990.

When AEI is compared across world regions, South Asia and Eastern Asia have had the largest shares in global irrigation over the entire study period, ranging from 26-33% and 20-34%, respectively (Supplement S3). Other world regions with substantial AEI include North America, Middle East, Eastern and Central Asia, and Southeast Asia, with shares on global AEI between 7% and 12%.

AEI at the grid cell level in year 1900 shows concentrations of irrigated land mainly on arid cropland, e.g. western North America, the Middle East and Central Asia, along the Nile and Indus rivers or the upstream region of the river Ganges (Figure 4E, Figure 5A). In China, Japan, Indonesia and Western Europe irrigated land was mainly in humid regions and served watering of rice fields (Asia) or meadows (Western Europe). In Africa, important irrigation infrastructure was found only in Egypt and South Africa. In Eastern Europe, the extent of irrigated land was limited to the southern part of Russia and the Ukraine (Figure 5A). In 12 countries the extent of irrigated land exceeded 1 Mha in the year 1900: India (17.8 Mha),

476 China (17.6 Mha), USA (4.5 Mha), Japan (2.7 Mha), Egypt (2.3 Mha), Indonesia (1.4 Mha),  
477 Italy (1.3 Mha), Kazakhstan (1.2 Mha), Iran (1.2 Mha), Spain (1.2 Mha), Uzbekistan (1.1  
478 Mha), and Mexico (1.0 Mha) (Supplement S3).

479 In year 1960, irrigated land exceeded 1 Mha in 23 countries (Supplement S3). In the western  
480 part of the USA, Canada and Mexico but also in South America and the Caribbean, e.g. in  
481 Argentina, Brazil, Colombia, Chile, Cuba, Ecuador, Peru, and Venezuela irrigation was  
482 already widespread (Figure 5G). In Europe, irrigated land increased mainly in the southern  
483 part, e.g. in Albania, Bulgaria, France, Greece, Italy, Portugal, Romania, Russia, Serbia,  
484 Spain, and the Ukraine. Irrigated land began to develop at a large scale in Australia and New  
485 Zealand but also in several African countries such as Algeria, Libya, Madagascar, Morocco,  
486 and Nigeria. In Asia, irrigation was already developed on cropland in all the arid regions but  
487 extended also to more humid regions with rice irrigation in countries or regions such as  
488 Bangladesh, southern India, Malaysia, Myanmar, North- and South Korea, the Philippines, Sri  
489 Lanka, Thailand, and Vietnam (Supplement S3, Figure 5G).

490 Until year 1980 AEI continued to increase, reaching its maximum extent in some countries in  
491 Eastern Europe, Africa and Latin America (Belarus, Bolivia, Botswana, Estonia, Hungary,  
492 Mozambique, and Poland) (Figure 5J). Until year 2005 AEI increased further in many  
493 countries and extended also to the more humid eastern part of the USA (Figure 5). In  
494 Australia, Bangladesh, Brazil, China, France, India, Indonesia, Iran, Iraq, Mexico, Myanmar,  
495 Pakistan, Thailand, Turkey, USA, and Vietnam AEI increased by more than 1 Mha between  
496 1980 and 2005 (Supplement S3). In contrast, AEI decreased between 1980 and 2005 in many  
497 European countries such as Albania, Belarus, Bulgaria, Czech Republic, Estonia, Germany,  
498 Hungary, Latvia, Lithuania, the Netherlands, Poland, Portugal, Romania, Russia, and Serbia  
499 but also in Bolivia, Botswana, Israel, Japan, Kazakhstan, Mauritania, Mozambique, South  
500 Korea, and Taiwan (Supplement S3).

501 **3.2 Gridded area equipped for irrigation in the different gridded products**

502 The rules used to downscale AEI\_SU to grid cells (Figure 2) resulted in differences in AEI  
503 per grid cell but also in differences in the total AEI assigned in total in the gridded products.  
504 The main reason is that AEI in each grid cell was constrained to the sum of cropland and  
505 pasture for the product lines that maximize consistency with the land use data sets (right  
506 column in Figure 2, see Section 2.2.2). In particular in very small subnational administrative  
507 units in arid regions, where most of the agricultural land is irrigated, AEI based on irrigation  
508 statistics was larger than the sum of cropland and pasture in the corresponding administrative

unit. Consequently, in the downscaling process this difference between AEI and the sum of cropland and pasture was not assigned to grid cells. In the product lines maximizing consistency with the irrigation statistics (left column in Figure 2) AEI was constrained by total land area only. Therefore, if required (in step 9 of the allocation), AEI exceeded the sum of cropland and pasture. In the gridded products based on HYDE land use the AEI not assigned to grid cells was smallest in year 2005 (10,529 ha or 0.003% of total AEI) and largest in year 1900 (2.6% of total AEI in AEI\_HYDE\_LOWER\_CP, 2.1% of total AEI in AEI\_HYDE\_FINAL\_CP and 1.6% of total AEI in AEI\_HYDE\_UPPER\_CP). In AEI\_EARTHSTAT\_CP, the extent of AEI not assigned to grid cells was largest in year 1990 (2.3 Mha) while the extent relative to total AEI was largest in year 1920 (0.9%).

While differences in total AEI per administrative unit across gridded timeseries are relatively low, differences at the grid cell level are considerable (Supplement S5). This reflects different patterns in historical cropland and pasture extent and varying downscaling rules. Cumulative absolute differences *AD*, calculated according to Equation 1, increase in the hindcasting process from 2005 to 1970 and decrease prior to that until 1900 (Figure B2A, B2C). In contrast, relative differences *RD* are lowest in year 2005 and increase continuously until year 1900 (Figure B2B, B2D). Differences among the six gridded products based on HYDE land use are relatively low, similar to differences among the two products based on EARTHSTAT land use. In contrast, differences between the specific gridded products and the mean of all gridded products are much larger but still lower than the difference between the mean of the gridded products of the HID and AEI derived from the national scaling approach (Figure B2).

Thus differences between the HYDE land use and the EARTHSTAT land use seem to have a larger effect than differences between the HIGHER, LOWER and FINAL HYDE land use variants. Aggregation of the data to 30 arc-minute resolution reduced *AD* and *RD* by about one third (Figure B2) but differences at the grid cell level are considerable even at this resolution. This shows the importance of using different land use data sets for the development of historical irrigation data and the need to develop specific gridded products to be used in conjunction with specific cropland and pasture data sets. To describe and map our results in more detail we used for the next sections the product AEI\_HYDE\_FINAL\_IR which has maximum consistency with the subnational irrigation statistics.

### 3.3 Irrigation evolution by irrigation category

In year 1900 about 48% of the global AEI was in dry areas, 33% in wet areas with predominantly rice irrigation and 19% in other wet areas (Figure 4B). In contrast, only 19%

of the global population lived in dry regions while 35% of the global population lived in wet areas with predominantly rice irrigation and 46% in other wet areas (Figure 4D). The reason for differences between AEI and population in these zones is likely that the majority of the rainfed cropland was located in wet regions whose carrying capacity without irrigation was higher and consequently, a higher population density could be supported. While the share of AEI in dry regions remained quite stable varying around 50% through the entire study period (e.g. 46% in year 2005 and 48% in year 1900), the share of AEI in wet regions with predominantly rice irrigation decreased from 33% to 26% while the share of AEI in other wet irrigation areas increased from 19% to 28% between 1900 and 2005 (Figure 4B). The share of the global population living in dry regions increased between 1900 and 2005 from 19% to 26% while the population living in other wet regions decreased from 46% to 35% (Figure 4D).

### **3.4 Change in mean aridity and river discharge in areas equipped for irrigation**

The global mean aridity index on AEI declined from year 1900 until 1950 from 0.66 to 0.60 indicating that new irrigation was developed on land with higher aridity. After 1950 the mean aridity index increased to 0.63 until year 2005 (Figure 4F). Global mean natural river discharge on AEI declined by 4-5 km<sup>3</sup> yr<sup>-1</sup> in the period 1900 – 1950 (EARTHSTAT and HYDE gridded products) and increased then again by 2 km<sup>3</sup> yr<sup>-1</sup> (7.8%) (EARTHSTAT products) or remained more or less stable (HYDE products) (Figure 4H). For 2005, all products converge to a mean natural river discharge on irrigated land of 24-25 km<sup>3</sup> yr<sup>-1</sup>.

## **4 Discussion**

### **4.1 Dataset comparison**

For most of the countries, global AEI in the HID is similar or very close to the data reported in the FAOSTAT database (FAO, 2014b) for the period since 1961 or to the AEI in the inventory by Freydanck and Siebert (2008) for the period between 1900 and 2000. However, for several countries the AEI\_SU data used for the HID differ from those in the two other inventories (Tables A1, A2).

There are three major reasons for these differences between HID and FAOSTAT:

First, there are countries in which statistics on AEI are not collected by the official statistics departments such as Australia, Canada, New Zealand, Pakistan, and Puerto Rico. In these



573 countries statistics on irrigated land refer to the AAI in the year of the survey. Many factors  
574 can result in only a part of the irrigation infrastructure being actually used for irrigation, such  
575 as failure in water supply or damaged infrastructure. In other, mainly humid and sub-humid  
576 regions, only specific high value crops, such as vegetables, are irrigated (Siebert et al., 2010).  
577 For many of these countries FAOSTAT reports the AAI instead of AEI while the statistics  
578 used for the HID were adjusted (as described in section 2.1.3) to account for the difference  
579 between AEI and AAI. Consequently, AEI in the HID is higher than the irrigated area  
580 reported by FAOSTAT (Table A1).

581 Another group of countries in which AEI in the HID differs from the data reported by  
582 FAOSTAT is developed regions, e.g. in Europe, North America or Oceania, such as Austria,  
583 Canada, Germany, Greece, Italy, Portugal. FAO is collecting detailed country specific  
584 information on water management and irrigation in its AQUASTAT program and provides  
585 this information in country profiles  
586 ([http://www.fao.org/nr/water/aquastat/countries\\_regions/index.stm](http://www.fao.org/nr/water/aquastat/countries_regions/index.stm)). These country profiles  
587 are based on information obtained from different national data sources and are compiled and  
588 revised by FAO consultants from the respective country. This detailed information collected  
589 in the AQUASTAT program is also used to improve and update the time series in FAOSTAT.  
590 The mandate of FAO is; however, focused on developing and transition countries; therefore,  
591 these detailed country profiles are not available for developed countries and consequently,  
592 less effort is made to improve historical data for these countries. In contrast, for many of the  
593 developed countries, the HID is based on information obtained from historical national census  
594 reports (Table A1).

595 A third group of countries with differences between AEI in the HID and FAOSTAT are the  
596 former socialist countries in Eastern Europe. In these countries large scale irrigation  
597 infrastructure was developed with centralized management structure. After the transition to a  
598 market-based economy, most of this former infrastructure was not used anymore and it is a  
599 matter of definition to decide whether these areas should still be considered as areas equipped  
600 for irrigation or not. For most of these countries the HID shows a major decline in AEI after  
601 1990 (based on national surveys or statistics on irrigable area provided by EUROSTAT)  
602 while FAOSTAT still includes the former irrigation infrastructure in some countries (Table  
603 A1).

604 The main reasons for differences between AEI per country in the HID and the inventory of  
605 AEI per country (Freydank and Siebert, 2008) (Table A2) is that the number of references

used to develop the HID was much larger than the number of historical reports used by Freydank and Siebert (2008). Many assumptions used in Freydank and Siebert (2008) were thus replaced by real data. This includes also changes for the year 2000 (e.g. for Australia, Bulgaria, Canada, China, Indonesia, Kazakhstan, Russia, Ukraine, and USA; see Table A2) because the recent extent of irrigated land in Freydank and Siebert (2008) was based on the statistical database used to develop version 4 of the Global Map of Irrigation Areas (Siebert et al., 2007), while the HID is consistent with the updated and improved version 5 of this data set (Siebert et al., 2013). In addition, the HID explicitly accounts for the historical practise of meadow irrigation used mainly in Central and Northern Europe resulting in higher estimates of AEI, in particular for year 1900 for many European countries, e.g. Austria, Germany, Norway, Poland, Sweden, Switzerland, and UK (Table A2).

To verify the spatial patterns in historical irrigation extent in the gridded product, we compared the product AEI\_HYDE\_FINAL\_IR for year 1910 (Figure 6A) to two historical maps of the major irrigation areas in the United States in years 1909 (Figure 6B) and 1911 (Figure 6C). We found that our product represents remarkably well the spatial pattern of the major irrigation areas shown on the historical maps, in particular in states such as Idaho, Utah and Wyoming. In some states, the pattern of AEI in the HID differs from the pattern shown in the historical maps. This can be expected because of the simplicity of our downscaling approach and because of difficulties of showing minor irrigation sites on the historical maps. However, based on visual comparison of the maps it seems that for many states the agreement is even better than the match between the two historical maps, and that the agreement of the pattern shown in the HID and in the map for year 1909 is best. One exception is California where the HID and the historical map for year 1911 show irrigation development over the entire Central Valley (Figures 6A, 6C) while in the historical map for year 1909 only shows irrigation in the southern part of the Central Valley (Figure 6B).

The good agreement between the spatial pattern in the HID, that is mainly determined by the current pattern of irrigated land in the GMIA5 (Siebert et al., 2013), and the pattern shown in historical maps indicates that most of the major irrigation areas today in the Western United States were already irrigated in year 1910, although the total extent of irrigated land in the United States at that time was only about 20% of the current extent. This may not be the case for other countries where most of the irrigation infrastructure was developed more recently. A systematic validation of the HID to historical maps was however not possible because of the limited availability of historical large-scale irrigation maps. A comparison of the HID for year 1960 (~~Figure 5G~~) with a historical global irrigation map (Highsmith, 1965) shows, however,

that the main irrigation areas shown in the historical global map are also present in the HID (Supplement S6). A very good agreement of the historical irrigation map ((Highsmith, 1965) and our gridded product for year 1960 (AEI HYDE FINAL IR) was found for the major irrigation areas in the Central Valley in California, along the Yakima River in Washington, at the High Plains Aquifer in Texas, along the Colorado River and the Rio Grande (United States, Mexico), in Alberta (Canada), the Pacific Coast and along Rio Lerma in Mexico, in Honduras and Nicaragua, in Peru, Chile and Argentina, in Spain, along the French Mediterranean coast, in Northern Italy, Bulgaria and Romania, along the Nile River in Egypt and Sudan, in South Africa and Zimbabwe, in the Euphrates-Tigris region and the Aral Sea basin, in Azerbaijan, Pakistan, North India and East India, in the area around Bangkok (Thailand), in Vietnam, Taiwan, North Korea, South Korea and Japan, in the North China Plain, on the island of Java (Indonesia), in the Murray Darling Basin (Australia) and on the Southern Island of New Zealand (Supplement S6). However, there are also some regions that show differences in the two products. For example, the map published by Highsmith (1965) shows very little irrigation in the Eastern United States, Northern and Central Europe, Portugal, Southwest and Northern France, Southern Brazil, the Fergana Valley in Uzbekistan, the interior of Turkey, Western China and Sumatra (Indonesia) while the subnational statistics used to develop the HID indicate that there was irrigation already developed at this time (Supplement S6). For other regions, such as Northeast Brazil or Namibia, the extent of irrigated land seems to be larger in the historical drawings relative to the newly developed HID (Supplement S6). The general impression from the comparison of the two map products is that there is a very good agreement for most of the major irrigation areas while there is less agreement for the minor irrigation areas. Some of the differences may be related to difficulties with drawing interspersed small scale irrigation on the historical maps. In other cases it may be that the newly developed HID shows irrigation in areas where infrastructure was not developed at this time, e.g. because the resolution of the subnational irrigation statistics was not sufficient.

#### 4.2 Improvements in mapping of historical irrigation extent by the new inventory

In previous studies only changes in irrigated land at the country level were considered and gridded data showing the percentage of irrigated land under current conditions were multiplied by a factor which represented the change in irrigated land at the country level to derive patterns of irrigated land for historical periods. Consequently, the relative contribution

of specific grid cells to the national sum of irrigated land remained the same through the entire study period and the number of irrigated grid cells only changed when irrigated land in a country decreased to zero. Development of the HID improves on the historical development of irrigated land from previous studies by considering subnational data on the extent of irrigated land. In addition, when irrigated land declined historically, the number of irrigated grid cells is reduced and irrigated land is concentrated into smaller regions in the HID (Figures 6A, 7A, 7C, 7E) while there were many irrigated cells with very small irrigated areas in the historical layers when the national scaling approach was used (Figures 6D, 7B, 7D, 7E).

At least for the United States, the historical pattern derived with the new method (HID) agrees much better with the pattern shown on historical maps (Figure 6), particular in central US states (e.g. Texas, Kansas and Nebraska). In the USA, irrigation developed first in the arid western part of the country. While this is reflected well in the HID, a national scaling approach would also assign irrigated land to grid cells that are currently irrigated and located in the Eastern part of the country, e.g. to the lower Mississippi valley (Figures 6, 7). Similar to this, historical irrigated land in India was mainly located in the Northwest of the country and in China more in the South of the country, while the national scaling approach would also assign irrigated land to the eastern part of India and the Northeast of China (Figure 7). Consideration of subnational statistics therefore resulted in a clear improvement in the historical irrigation layers, in particular for these large countries.

Differences in subnational patterns of irrigated land in the HID, as compared to the maps obtained with a national scaling approach, also affected the weighted mean aridity and river discharge on irrigated land (Figures 4F, 4H) which were computed as indicators of irrigation water requirement and irrigation water availability. In year 2005, the global mean ratio of annual precipitation and annual potential evapotranspiration (aridity index) was 0.63 on irrigated land (Figure 5F). Back to year 1950 the aridity index decreased to 0.60 (HID products) or 0.59 (national scaling approach) while the aridity index increased back to year 1900 again to 0.65-0.66 (HID products) or 0.63 (national scaling approach). Mean weighted river discharge decreased from 27-29 km<sup>3</sup> yr<sup>-1</sup> in year 2005 to 23-25 km<sup>3</sup> yr<sup>-1</sup> (HID product lines) in 1950 or from 24 km<sup>3</sup> yr<sup>-1</sup> to 20 km<sup>3</sup> yr<sup>-1</sup> in the national scaling approach in the same period (Figure 4H). Application of the new methodology used to develop the HID therefore resulted, at global scale, in more humid conditions with higher river discharge on irrigated land in year 1900 as compared to the means computed with the national scaling approach. We expect therefore, that the use of the new historical irrigation dataset will also result in

different results for major applications such as for estimates of irrigation water use, water scarcity, terrestrial water flows, or crop productivity.

### **4.3 Determinants of the fraction of irrigated cropland**

The indicators including AEI by irrigation category, change of mean aridity and of mean river discharge in AEI presented in Sections 3.3 and 3.4 can also be associated with the fraction of irrigated cropland to better describe reasons for spatial differences in densities of irrigated land and of trends in irrigation development (Figure 8). Irrigation is a measure of land use intensification because it is used to increase crop yields (Siebert and Döll, 2010). Therefore, a high density of irrigated land can be expected in regions where high crop yields (in kcal per ha and year) are required to meet the demand for food crops due to high population densities, e.g. in South Asia, East Asia and South-East Asia (compare Figures 8C and 8F). Consequently, a large part of the spatial patterns in the use of irrigated land can be explained by population density (Neumann et al., 2011). However, there are also other methods of land use intensification, e.g. multiple-cropping, fertilization, or crop protection from pests. The highest benefit from using irrigation is achieved in arid and semi-arid climates because of the reduction of crop drought stress and in paddy rice cultivation because rice is an aquatic crop and irrigation is also used to suppress weed growth by controlling the water table in the rice paddies. The high aridity explains the high fraction of irrigated cropland in Central Asia, on the Arabian Peninsula, in Egypt, Mexico, USA, Peru and Chile (compare Figures 8C and 8H) while the importance of traditional paddy rice explains high fractions of irrigated cropland in tropical regions, e.g. in Southeast Asia, Suriname, French Guyana, Colombia or in Madagascar and Japan (compare Figures 8C and 8G).

Large volumes of water are required for irrigation; therefore, the extent of irrigated land is also constrained by available and accessible freshwater resources. For example, the mean annual discharge weighted with AEI is relatively low in several countries in North and East Africa, but also in Mongolia, Mexico and Australia, which may be a barrier for the establishment of large scale irrigation infrastructure (Figure 8I). In contrast, annual discharge weighted with AEI is high in most of the humid rice cultivation regions (compare Figures 8G and 8I) and in some regions where arid irrigation areas (Figure 8H) are connected by a river to more humid upstream areas (Figure 8I), e.g. the river Nile basin in Egypt, the Indus and Ganges basins in Pakistan and India or the Aral basin the Central Asia or the Tigris and Euphrates basins in Turkey and Iraq. Many of the historical cultivation in these regions benefited greatly from irrigation and abundant water resources (Figure 8A). In contrast, trends

in the share of irrigated cropland between 1970 and 2005 (Figures 8A – 8C) seem to be more closely associated with changes in cropland productivity, shown here as kcal produced per year and hectare of cropland (Figures 8D – 8F). Large increases in cropland productivity in South America, Southeast Asia, Mexico, the USA and parts of Western Europe (Figures 8D – 8F) are consistent with increases in irrigated cropland fraction (Figures 8A – 8C) while regions with a decline in irrigated cropland fraction, e.g. in the period 1990 to 2005 in Eastern Europe, some countries of the former Soviet Union or Mongolia (Figures 8B, 8C) agree with regions with a similar trend in crop productivity (Figures 8E, 8F).

The relationships between irrigated cropland fraction and cropland productivity, aridity, rice cultivation and river discharge raise the question whether these relationships can be used to predict future spatio-temporal changes in the extent of irrigated land. Such information could improve climate impact assessments or global change studies, which assume in most cases a fixed extent of irrigated land in the coming decades. A key question for such applications will be to determine the drivers of land productivity. In historical periods the majority of crops were produced close to the region of consumption; therefore, cropland productivity was mainly driven by population density (Boserup, 1965; Kaplan et al., 2011). More recently, regions of crop production and consumption are increasingly decoupled by trade flows (Fader et al., 2013; Kastner et al., 2014). World food supply has increased within the last 50 years but food self sufficiency has not improved for most countries (Porkka et al., 2013). Furthermore, only a few countries, such as the USA, Canada, Brazil, Argentina or Australia have been net food exporters while most other countries have been net food importers (Porkka et al., 2013). Most of these net food exporting countries are characterized by an increase in cropland productivity and irrigated land (compare Figures 8D – 8E to Figure 3 in Porkka et al., 2013). These net food exporting countries also supply crop products to net importing countries with low cropland productivity and a low extent of irrigated land, e.g. in Africa. In a globalizing world these long distance links are expected to become even stronger and need to be considered when projecting future extent of irrigated land.

#### **4.4 Limitations and recommended use of the data set**

The uncertainty in estimated AEI is driven by uncertainties in input data (statistics on AEI, cropland and pasture extent) and by the assumptions made when harmonizing input data or when disaggregating AEI per administrative unit to grid cells. In particular, for the period before 1960 availability of survey based first hand statistics on AEI was limited and missing data had to be replaced by expert guesses or assumptions (Figure 1). Therefore, AEI for the

period before 1960 is expected to be less accurate than afterwards. Similar to this, the trend for the development of global AEI maybe less certain for the most recent years in the time series because detailed agricultural census surveys are typically undertaken only every 5-10 years and there is an additional 2-5 year lag before the survey results become available. For many countries the latest detailed survey data were available for the period around year 2000 and sometimes it was assumed that AEI did not change afterwards until year 2005 (Supplement S1). Therefore the declining increase of AEI for the period 1998-2005 (Figure 3) could be an artefact of the data constraints for the most recent years. Data availability also differed across countries (Supplement S1). In addition, boundaries of nations have been changing, for example, AEI for countries belonging to the former Soviet Union or the former Yugoslavia SFR is reported since the begin of the 1990s while for the period before 1990 the trend in AEI was estimated based on the trend reported for the USSR or for the SFR of Yugoslavia unless subnational information for historical years could be used. These changes in the extent of nations add another source of uncertainty to AEI.

Uncertainty in input data also impacts disaggregation of AEI into 5 arc-minute resolution. In countries with a high resolution of subnational irrigation statistics, uncertainty in the gridded product lines is expected to be less than in countries where data are available at the national scale only, in particular in the case of large countries. The resolution of subnational irrigation statistics has also been higher for the more recent time steps (Supplement S2). In the disaggregation process, subnational irrigation statistics were combined with gridded land use data sets (Section 2.2). Therefore, uncertainties in these input data are also introduced into the gridded product lines described in this article. Furthermore, it is possible that the census based land use statistics used as input to develop the HYDE and EARTHSTAT data layers on cropland and pasture extent may be inconsistent with the irrigation statistics used in this study, in particular for small subnational statistical units. This issue cannot be avoided because often the institutions responsible for collecting land use data (e.g. Ministries of Agriculture) differ from institutions collecting irrigation data (e.g. Ministry of Water Resources; Ministry for Environment) resulting in different sampling strategies and different survey years.

The assumptions and rules used in the disaggregation to 5 arc-minute resolution (Figure 2) may not be appropriate for all the countries and time steps. For specific countries such as Australia, New Zealand, or Switzerland it is known, for example, that irrigation has been used mainly for grassland or fodder; therefore, the rule to preferentially assign irrigation to cropland (S1, S5, S7 in Figure 2) resulted in incorrect assignment of irrigation in some places.

The disaggregation could therefore be improved by applying country-specific disaggregation rules; these rules ~~which also~~ should also be time specific ~~for time steps~~ to reflect time-varying differences in irrigation infrastructure development across regions ~~and time periods~~. However, the country specific information on the historical development of irrigation was insufficient to develop these rules for this global scale study.

Differences in spatial pattern of disaggregated AEI among the gridded products based on HYDE cropland and pasture extent and EARTHSTAT cropland and pasture extent suggest that the products developed in this study are only compatible with the specific land use data set used in this study as input. Application in studies in which both land use and irrigation data are required as input may result in inconsistencies when other land use information is used. However, the method and rules applied here are sufficiently general that they can easily be applied on request for other land use data sets reporting the extent of cropland and pasture at the required spatial and temporal resolution.

Because of differences in AEI at the grid cell level among the gridded products we suggest that more than one specific gridded product should be used in typical applications such as global hydrological modelling to get a better understanding of differences in model outputs caused by using different input data. We cannot make a general recommendation on which HID product may be most appropriate for different applications or represents patterns in AEI in a region better at this stage. When complete coverage of the global irrigation extent is most important, use of AEI HYDE FINAL IR or AEI EARTHSTAT IR is recommended. When, in contrast, consistency with cropland or pasture data is more important, the corresponding CP-product (AEI HYDE LOWER CP, AEI HYDE FINAL CP, AEI HYDE UPPER CP, AEI EARTHSTAT CP) may be more appropriate.

~~The data set presented in this study shows AEI and we need to highlight that the spatio-temporal patterns in the development of AEI cannot directly be translated into patterns in area actually irrigated (AAI) required for many applications. The main reason is that the percentage of AEI that is actually used for irrigation differs across countries (Siebert et al., 2010; Siebert et al., 2013). In addition, interannual variability in AAI is higher than that in AEI because the area that is actually irrigated in a specific season also depends on the specific weather conditions (supplementary irrigation) or on the performance of the water supply infrastructure (in particular in arid regions). Data for the percentage of AEI that is actually being used for irrigation, e.g. provided by GMIA5 (Siebert et al., 2013) for year 2005 could be used as a starting point for long term studies but modification would be required for~~



historical years to account for dynamics in construction and abandonment of irrigation infrastructure. The same is valid for irrigation water use. A study on global groundwater depletion, in which hydrological modelling was combined with groundwater well observations and total water storage trends from GRACE, found that independent estimates of groundwater depletion could best be simulated by the model if it is assumed that farmers in groundwater depleted areas only use 70% of the optimal irrigation water volume (Döll et al., 2014). However, it remained unclear whether this reduction in water use was achieved by reducing AAI or by reducing irrigation water application on AAI.

We are unable to quantify the uncertainties in our map because this would require defining error ranges and probabilities for each specific source of uncertainty, e.g. all the sources used as input. However, we expect that uncertainties are scale dependent with higher uncertainty for specific grid cells than for entire countries or the whole globe and that estimates for specific years are less certain than trends for longer time periods. Therefore, we recommend application of the data set mainly for global-scale research. ~~Because of the limitations described, we recommend application of the IID for global or for continental studies only.~~ Use of the data set for studies constrained to single countries is only suggested after carefully checking the resolution and origin of the input data used for the specific country (Supplement S1), checking the assumptions made to fill data gaps (Supplement S1), and testing whether the rules and assumptions made in the downscaling (Figure 2) are ~~reliable in~~ appropriate for that specific case.

The data set presented in this study shows AEI and we need to highlight that the spatio-temporal patterns in the development of AEI cannot directly be translated into patterns in area actually irrigated (AAI), information that is required for many applications. The main reason is that the percentage of AEI that is actually used for irrigation differs across countries (Siebert et al., 2010; Siebert et al., 2013). In addition, interannual variability in AAI is higher than that in AEI because the area that is actually irrigated in a specific season also depends on the specific weather conditions (supplementary irrigation) or on the performance of the water supply infrastructure (in particular in arid regions). Data on the percentage of AEI that is actually being used for irrigation, e.g. provided by GMIA5 (Siebert et al., 2013) for year 2005 could be used as a starting point for long-term studies but modification would be required for historical years to account for dynamics in construction and abandonment of irrigation infrastructure. The same applies to irrigation water use. A study on global groundwater depletion, in which hydrological modelling was combined with groundwater well observations and total water storage trends from GRACE, found that independent estimates of

groundwater depletion could best be simulated by the model if it is assumed that farmers in groundwater depleted areas only use ~70% of the optimal irrigation water volume (Döll et al., 2014). However, it is not known whether this reduction in water use was achieved by reducing AAI or by reducing irrigation water application on AAI. Because of differences in AEI at the grid-cell level among the gridded products we suggest that more than one specific gridded product should be used in typical applications such as global hydrological modelling to get a better understanding of the differences in model outputs caused by using different input data. We cannot make a general recommendation on which HID product may be most appropriate for different applications or represents patterns in AEI in a region better at this stage. When a complete coverage of the global irrigation extent is most important, use of AEI\_HYDE\_FINAL\_IR or AEI\_EARTHSTAT\_IR is recommended. When, in contrast, consistency to cropland or pasture data is more important, the corresponding CP product (AEI\_HYDE\_LOWER\_CP, AEI\_HYDE\_FINAL\_CP, AEI\_HYDE\_UPPER\_CP, AEI\_EARTHSTAT\_CP) maybe more appropriate.

Despite the uncertainties and limitations described before we are convinced that application of HID will improve model results in many fields of research, e.g. for all applications that hitherto used the national scaling approach so far to derive trends in irrigated land (examples are described in Section 1). In addition, the data set may also be used in socio-hydrological research (Baldassarre et al., 2013; Sivapalan et al., 2014) to study two-way interactions between humans and water resources or in sustainability research more generally. One advantage of HID is that trends in irrigated land are determined by the official land use data and therefore implemented independently from trends in socio-economic variables, such as GDP, prices, or population density which makes it possible to study interactions between the extent of irrigated land and socio-economic development. For studying relationships with physical properties, such as soil suitability, slope or climate it is however recommended to use the subnational inventory of historical statistics (AEI\_SU) or the gridded products based on EARTHSTAT historical cropland extent because some relationships with physical variables have been used to develop the HYDE cropland data set (Klein Goldewijk et al., 2011) so that our gridded products based on HYDE are not completely independent of these variables.

## 5 Conclusions

The Historical Irrigation Dataset (HID) describes the development of area equipped for irrigation for the period 1900 to 2005. For the first time, subnational historical irrigation statistics were collected and incorporated into the data set resulting in an improved

Formatted: Bullets and Numbering

Formatted: Normal

consideration of changes in the spatial pattern of irrigated land. A new method was developed and applied to downscale the subnational irrigation statistics to 5 arc-minute resolution. Different from previous approaches, the downscaling method aims to harmonize the downscaled irrigated area to historical cropland and pasture data, which represents an important improvement for many potential applications of the data set, including global hydrological modelling, modelling of changes in crop productivity or climate impact assessments.

### **Author contributions**

S. S., M. K. and M. P. developed the Historical Irrigation Dataset (HID) with M. K. and M. P. focussing on the development of the database of subnational irrigation statistics and S. S. developing the methodology and tools for the disaggregation to grid level. All co-authors contributed data used to develop or analyze the HID. S. S. and M. K. prepared the manuscript with contributions from all co-authors.

### **Acknowledgements**

Matti Kummu was supported by the Academy of Finland project SCART (grant no. 267463) and Aalto University postdoc funds. Miina Porkka received funding from *Maa- ja vesitekniikan tuki ry*. A grant to Navin Ramankutty from the Gordon and Betty Moore Foundation (through a sub-award from the University of Minnesota) supported part of this work. Stefan Siebert and Navin Ramankutty acknowledge support from the GEOSHARE project (USDA agreement No. 59-0210-2-122). We thank Andreas Kunz (Institute of European History, University of Mainz) for providing maps and information on the administrative setup in the former German Empire and Lan Zhao (Rosen Center for Advanced Computing, Purdue University) for support and assistance in the data publishing process. Tim aus der Beek (IWW Water Centre, Mülheim, Germany) provided data on the historical extent of irrigation in the Aral Sea basin. Kimberly Milligan, Katharina Freydank, and Sarah Davidson helped in the collection and digitizing of subnational irrigation statistics.

### **References**

Achtnich, W.: Bewässerungslandbau, Eugen Ulmer, Stuttgart, Germany, 1980.

- Baldassarre, G. D., Viglione, A., Carr, G., Kuil, L., Salinas, J., and Blöschl, G.: Socio-hydrology: conceptualising human-flood interactions, Hydrol Earth Syst Sc, 17, 3295-3303, doi:10.5194/hess-17-3295-2013, 2013.
- Biemans, H., Haddeland, I., Kabat, P., Ludwig, F., Hutjes, R. W. A., Heinke, J., von Bloh, W., and Gerten, D.: Impact of reservoirs on river discharge and irrigation water supply during the 20th century, *Water Resour Res*, 47, doi:10.1029/2009wr008929, 2011.
- Boserup, E.: The conditions of agricultural growth. The economics of agrarian change under population pressure., Aldine, Chicago, 1965.
- Bowman, I.: Irrigation map of the West, 1911. In: *Forest Physiography*, Bowman, I. (Ed.), John Wiley and Sons, New York, 1911.
- Bruinsma, J.: The resource outlook to 2050. By how much do land, water use and crop yields need to increase by 2050?, FAO, Rome, Italy, 33 pp., 2009.
- Buck, J. L.: Land utilization in China, Commercial Press, Shanghai, China, 1937.
- CGIAR-CSI: Global Aridity and PET Database. CGIAR-CSI, 2014.
- Colaizzi, P. D., Gowda, P. H., Marek, T. H., and Porter, D. O.: Irrigation in the Texas High Plains: A Brief History and Potential Reductions in Demand, *Irrig Drain*, 58, 257-274, doi:10.1002/Ird.418, 2009.
- Döll, P., Fiedler, K., and Zhang, J.: Global-scale analysis of river flow alterations due to water withdrawals and reservoirs, *Hydrol Earth Syst Sc*, 13, 2413-2432, doi:10.5194/hess-13-2413-2009, 2009.
- Döll, P., Hoffmann-Dobrev, H., Portmann, F. T., Siebert, S., Eicker, A., Rodell, M., Strassberg, G., and Scanlon, B. R.: Impact of water withdrawals from groundwater and surface water on continental water storage variations, *Journal of Geodynamics*, 59–60, 143-156, doi:10.1016/j.jog.2011.05.001, 2012.
- Döll, P., Müller Schmied, H., Schuh, C., Portmann, F. T., and Eicker, A.: Global-scale assessment of groundwater depletion and related groundwater abstractions: Combining hydrological modeling with information from well observations and GRACE satellites, *Water Resour Res*, 50, 5698–5720, doi:10.1002/2014WR015595, 2014.
- European Commission: Eurostat. 2014.
- Fader, M., Gerten, D., Krause, M., Lucht, W., and Cramer, W.: Spatial decoupling of agricultural production and consumption: quantifying dependences of countries on food imports due to domestic land and water constraints, *Environmental Research Letters*, 8, 014046, doi:10.1088/1748-9326/8/1/014046, 2013.
- Fader, M., Rost, S., Muller, C., Bondeau, A., and Gerten, D.: Virtual water content of temperate cereals and maize: Present and potential future patterns, *J Hydrol*, 384, 218-231, doi:10.1016/j.jhydro1.2009.12.011, 2010.
- FAO: Aquastat. FAO, Rome, Italy, 2014a.
- FAO: FAOSTAT. FAO, Rome, Italy, 2014b.
- Framji, K. K., Garg, B. C., and Luthra, S. D. L.: Irrigation and drainage in the world - a global review, International Commission on Irrigation and Drainage, New Delhi, India, 1981-1983.
- Frenken, K. and Gillet, V.: Irrigation water requirement and water withdrawal by country, FAO, Rome, Italy, 2012<sup>3</sup>.

978 Freydank, K. and Siebert, S.: Towards mapping the extent of irrigation in the last century: a  
979 time series of irrigated area per country, University of Frankfurt (Main), Germany, 46 pp.,  
980 2008.

981 GADM.org: GADM database of Global Administrative Areas, version 1. 2009.

982 Gerten, D., Hoff, H., Rockstrom, J., Jagermeyr, J., Kummu, M., and Pastor, A. V.: Towards a  
983 revised planetary boundary for consumptive freshwater use: role of environmental flow  
984 requirements, *Curr Opin Env Sust*, 5, 551-558, doi:10.1016/j.cosust.2013.11.001, 2013.

985 Gerten, D., Rost, S., von Bloh, W., and Lucht, W.: Causes of change in 20th century global  
986 river discharge, *Geophys Res Lett*, 35, L20405, doi:10.1029/2008gl035258, 2008.

987 Gleeson, T., Wada, Y., Bierkens, M. F. P., and van Beek, L. P. H.: Water balance of global  
988 aquifers revealed by groundwater footprint, *Nature*, 488, 197-200, doi:10.1038/Nature11295,  
989 2012.

990 Haddeland, I., Skaugen, T., and Lettenmaier, D. P.: Hydrologic effects of land and water  
991 management in North America and Asia: 1700-1992, *Hydrol Earth Syst Sc*, 11, 1035-1045,  
992 doi:10.5194/hess-11-1035-2007, 2007.

993 Han, S. J., Tang, Q. H., Xu, D., and Wang, S. L.: Irrigation-induced changes in potential  
994 evaporation: more attention is needed, *Hydrol Process*, 28, 2717-2720,  
995 doi:10.1002/Hyp.10108, 2014.

996 Harding, R. J., Blyth, E. M., Tuinenburg, O. A., and Wiltshire, A.: Land atmosphere  
997 feedbacks and their role in the water resources of the Ganges basin, *Sci Total Environ*, 468,  
998 S85-S92, doi:10.1016/j.scitotenv.2013.03.016, 2013.

999 Harris, I., Jones, P. D., Osborn, T. J., and Lister, D. H.: Updated high-resolution grids of  
1000 monthly climatic observations - the CRU TS3.10 Dataset, *Int J Climatol*, 34, 623-642,  
1001 doi:10.1002/Joc.3711, 2014.

1002 Highsmith, R. M.: Irrigated Lands of the World, *Geogr Rev*, 55, 382-389,  
1003 doi:10.2307/213135, 1965.

1004 Hoff, H., Falkenmark, M., Gerten, D., Gordon, L., Karlberg, L., and Rockstrom, J.: Greening  
1005 the global water system, *J Hydrol*, 384, 177-186, doi:10.1016/j.jhydrol.2009.06.026, 2010.

1006 [Hoogeveen, J., Faurès, J. M., Peiser, L., Burke, J., and van de Giesen, N.: GlobWat – a global](#)  
1007 [water balance model to assess water use in irrigated agriculture, \*Hydrol. Earth Syst. Sci.\*](#)  
1008 [Discuss., 12, 801-838, doi:10.5194/hessd-12-801-2015, 2015.](#)

1009 Kaplan, J. O., Krumhardt, K. M., Ellis, E. C., Ruddiman, W. F., Lemmen, C., and Goldewijk,  
1010 K. K.: Holocene carbon emissions as a result of anthropogenic land cover change, *Holocene*,  
1011 21, 775-791, doi:10.1177/0959683610386983, 2011.

1012 Kastner, T., Erb, K. H., and Haberl, H.: Rapid growth in agricultural trade: effects on global  
1013 area efficiency and the role of management, *Environmental Research Letters*, 9, 034015,  
1014 doi:10.1088/1748-9326/9/3/034015, 2014.

1015 Klein Goldewijk, K.: Three centuries of global population growth: A spatial referenced  
1016 population (density) database for 1700-2000, *Popul Environ*, 26, 343-367,  
1017 doi:10.1007/s11111-005-3346-7, 2005.

1018 Klein Goldewijk, K., Beusen, A., and Janssen, P.: Long-term dynamic modeling of global  
1019 population and built-up area in a spatially explicit way: HYDE 3.1, *Holocene*, 20, 565-573,  
1020 doi:10.1177/0959683609356587, 2010.

1021 Klein Goldewijk, K., Beusen, A., van Drecht, G., and de Vos, M.: The HYDE 3.1 spatially  
1022 explicit database of human-induced global land-use change over the past 12,000 years, *Global*  
1023 *Ecol Biogeogr*, 20, 73-86, doi:10.1111/j.1466-8238.2010.00587.x, 2011.

1024 Konikow, L. F.: Contribution of global groundwater depletion since 1900 to sea-level rise,  
1025 *Geophys Res Lett*, 38, L17401, doi:10.1029/2011gl048604, 2011.

1026 Kueppers, L. M., Snyder, M. A., and Sloan, L. C.: Irrigation cooling effect: Regional climate  
1027 forcing by land-use change, *Geophys Res Lett*, 34, L03703, doi:10.1029/2006gl028679, 2007.

1028 Lehner, B., Liermann, C. R., Revenga, C., Vorosmarty, C., Fekete, B., Crouzet, P., Doll, P.,  
1029 Endejan, M., Frenken, K., Magome, J., Nilsson, C., Robertson, J. C., Rodel, R., Sindorf, N.,  
1030 and Wisser, D.: High-resolution mapping of the world's reservoirs and dams for sustainable  
1031 river-flow management, *Front Ecol Environ*, 9, 494-502, doi:10.1890/100125, 2011.

1032 Lobell, D. B., Bonfils, C. J., Kueppers, L. M., and Snyder, M. A.: Irrigation cooling effect on  
1033 temperature and heat index extremes, *Geophys Res Lett*, 35, L09705,  
1034 doi:10.1029/2008gl034145, 2008.

1035 Müller Schmied, H., Eisner, S., Franz, D., Wattenbach, M., Portmann, F. T., Flörke, M., and  
1036 Döll, P.: Sensitivity of simulated global-scale freshwater fluxes and storages to input data,  
1037 hydrological model structure, human water use and calibration, *Hydrol. Earth Syst. Sci.*  
1038 *Discuss.*, 11, 1583-1649, doi:10.5194/hessd-11-1583-2014, 2014.

1039 Neumann, K., Stehfest, E., Verburg, P. H., Siebert, S., Müller, C., and Veldkamp, T.:  
1040 Exploring global irrigation patterns: A multilevel modelling approach, *Agr Syst*, 104, 703-  
1041 713, doi:10.1016/j.agsy.2011.08.004, 2011.

1042 Ozdogan, M. and Gutman, G.: A new methodology to map irrigated areas using multi-  
1043 temporal MODIS and ancillary data: An application example in the continental US, *Remote*  
1044 *Sens Environ*, 112, 3520-3537, doi:10.1016/j.rse.2008.04.010, 2008.

1045 Pokhrel, Y., Hanasaki, N., Koirala, S., Cho, J., Yeh, P. J. F., Kim, H., Kanae, S., and Oki, T.:  
1046 Incorporating Anthropogenic Water Regulation Modules into a Land Surface Model, *J*  
1047 *Hydrometeorol*, 13, 255-269, doi:10.1175/Jhm-D-11-013.1, 2012.

1048 Porkka, M., Kumm, M., Siebert, S., and Varis, O.: From Food Insufficiency towards Trade  
1049 Dependency: A Historical Analysis of Global Food Availability, *Plos One*, 8, e82714,  
1050 doi:10.1371/journal.pone.0082714, 2013.

1051 Portmann, F. T., Siebert, S., and Döll, P.: MIRCA2000-Global monthly irrigated and rainfed  
1052 crop areas around the year 2000: A new high-resolution data set for agricultural and  
1053 hydrological modeling, *Global Biogeochem Cy*, 24, Gb1011, doi:10.1029/2008gb003435,  
1054 2010.

1055 Puma, M. J. and Cook, B. I.: Effects of irrigation on global climate during the 20th century, *J*  
1056 *Geophys Res-Atmos*, 115, D16120, doi:10.1029/2010jd014122, 2010.

1057 Ramankutty, N., Evan, A. T., Monfreda, C., and Foley, J. A.: Farming the planet: 1.  
1058 Geographic distribution of global agricultural lands in the year 2000, *Global Biogeochem Cy*,  
1059 22, Gb1003, doi:10.1029/2007gb002952, 2008.

1060 Ramankutty, N. and Foley, J. A.: Estimating historical changes in global land cover:  
1061 Croplands from 1700 to 1992, *Global Biogeochem Cy*, 13, 997-1027,  
1062 doi:10.1029/1999gb900046, 1999.

1063 Sacks, W. J., Cook, B. I., Buening, N., Levis, S., and Helkowski, J. H.: Effects of global  
1064 irrigation on the near-surface climate, *Climate Dynamics*, 33, 159-175, doi:10.1007/s00382-  
1065 008-0445-z, 2009.

1066 Saeed, F., Hagemann, S., and Jacob, D.: Impact of irrigation on the South Asian summer  
1067 monsoon, *Geophys Res Lett*, 36, L20711, doi:10.1029/2009gl040625, 2009.

1068 Shukla, S. P., Puma, M. J., and Cook, B. I.: The response of the South Asian Summer  
1069 Monsoon circulation to intensified irrigation in global climate model simulations, *Climate*  
1070 *Dynamics*, 42, 21-36, doi:10.1007/s00382-013-1786-9, 2014.

1071 Siebert, S., Burke, J., Faures, J. M., Frenken, K., Hoogeveen, J., Döll, P., and Portmann, F. T.:  
1072 Groundwater use for irrigation - a global inventory, *Hydrol Earth Syst Sc*, 14, 1863-1880,  
1073 doi:10.5194/hess-14-1863-2010, 2010.

1074 Siebert, S. and Döll, P.: Quantifying blue and green virtual water contents in global crop  
1075 production as well as potential production losses without irrigation, *J Hydrol*, 384, 198-217,  
1076 doi:10.1016/j.jhydro1.2009.07.031, 2010.

1077 Siebert, S., Döll, P., Feick, S., Hoogeveen, J., and Frenken, K.: Global Map of Irrigation  
1078 Areas version 4.0.1. FAO (Ed.), Land and Water Digital Media Series 34, FAO, Rome, Italy,  
1079 2007.

1080 Siebert, S., Döll, P., Hoogeveen, J., Faures, J. M., Frenken, K., and Feick, S.: Development  
1081 and validation of the global map of irrigation areas, *Hydrol Earth Syst Sc*, 9, 535-547,  
1082 doi:10.5194/hess-9-535-2005, 2005.

1083 Siebert, S., Ewert, F., Eyshi Rezaei, E., Kage, H., and Graß, R.: Impact of heat stress on crop  
1084 yield—on the importance of considering canopy temperature, *Environmental Research*  
1085 *Letters*, 9, 044012, doi:10.1088/1748-9326/9/4/044012, 2014.

1086 Siebert, S., Henrich, V., Frenken, K., and Burke, J.: Update of the Global Map of Irrigation  
1087 Areas to version 5, University of Bonn / FAO, Bonn, Germany / Rome, Italy, 178 pp.,  
1088 doi:10.13140/2.1.2660.6728, 2013.

1089 [Salmon, J. M., Friedl, M. A., Froking, S., Wisser, D., and Douglas, E. M.: Global rain-fed,](#)  
1090 [irrigated, and paddy croplands: A new high resolution map derived from remote sensing, crop](#)  
1091 [inventories and climate data, \*Int J Appl Earth Obs\*, 38, 321-334,](#)  
1092 [doi:10.1016/j.jag.2015.01.014, 2015.](#)

1093 [Sivapalan, M., Konar, M., Srinivasan, V., Chhatre, A., Wutich, A., Scott, C. A., Wescoat, J.](#)  
1094 [L., and Rodríguez-Iturbe, I.: Socio-hydrology: Use-inspired water sustainability science for](#)  
1095 [the Anthropocene, \*Earth's Future\*, 2, 2013EF000164, doi:10.1002/2013ef000164, 2014.](#)

1096 [Steffen, W., Richardson, K., Rockström, J., Cornell, S. E., Fetzer, I., Bennett, E. M., Biggs,](#)  
1097 [R., Carpenter, S. R., de Vries, W., de Wit, C. A., Folke, C., Gerten, D., Heinke, J., Mace, G.](#)  
1098 [M., Persson, L. M., Ramanathan, V., Reyers, B., and Sörlin, S.: Planetary boundaries:](#)  
1099 [Guiding human development on a changing planet, \*Science\*, 347, 1259855,](#)  
1100 [doi:10.1126/science.1259855, 2015.](#)

1101 Thenkabail, P. S., Biradar, C. M., Noojipady, P., Dheeravath, V., Li, Y. J., Velpuri, M.,  
1102 Gumma, M., Gangalakunta, O. R. P., Turrall, H., Cai, X. L., Vithanage, J., Schull, M. A., and  
1103 Dutta, R.: Global irrigated area map (GIAM), derived from remote sensing, for the end of the  
1104 last millennium, *Int J Remote Sens*, 30, 3679-3733, doi:10.1080/01431160802698919, 2009.

1105 U.S. Department of Agriculture: Summary Report: 2007 National Resources Inventory,  
1106 Natural Resources Conservation Service, Washington, DC, and Center for Survey Statistics  
1107 and Methodology, Iowa State University, Ames, Iowa, 123 pp., 2009.

1108 UNEP: World atlas of desertification, 2nd edition, United Nations Environment Programme  
1109 (UNEP), London, UK, 1997.

1110 Wada, Y., van Beek, L. P. H., and Bierkens, M. F. P.: Modelling global water stress of the  
 1111 recent past: on the relative importance of trends in water demand and climate variability,  
 1112 *Hydrol Earth Syst Sc*, 15, 3785-3808, doi:10.5194/hess-15-3785-2011, 2011.

1113 Wada, Y., Wisser, D., and Bierkens, M. F. P.: Global modeling of withdrawal, allocation and  
 1114 consumptive use of surface water and groundwater resources, *Earth Syst Dynam*, 5, 15-40,  
 1115 doi:10.5194/esd-5-15-2014, 2014.

1116 West, P. C., Gerber, J. S., Engstrom, P. M., Mueller, N. D., Brauman, K. A., Carlson, K. M.,  
 1117 Cassidy, E. S., Johnston, M., MacDonald, G. K., Ray, D. K., and Siebert, S.: Leverage points  
 1118 for improving global food security and the environment, *Science*, 345, 325-328,  
 1119 doi:10.1126/science.1246067, 2014.

1120 Whitbeck, R. H.: Irrigation in the United States, *The Geographical Journal*, 54, 221-231,  
 1121 1919.

1122 Wisser, D., Fekete, B. M., Vorosmarty, C. J., and Schumann, A. H.: Reconstructing 20th  
 1123 century global hydrography: a contribution to the Global Terrestrial Network- Hydrology  
 1124 (GTN-H), *Hydrol Earth Syst Sc*, 14, 1-24, doi:10.5194/hess-14-1-2010, 2010.

1125 Wriedt, G., van der Velde, M., Aloe, A., and Bouraoui, F.: A European irrigation map for  
 1126 spatially distributed agricultural modelling, *Agricultural Water Management*, 96, 771-789,  
 1127 doi:10.1016/j.agwat.2008.10.012, 2009.

1128 Yoshikawa, S., Cho, J., Yamada, H. G., Hanasaki, N., and Kanae, S.: An assessment of global  
 1129 net irrigation water requirements from various water supply sources to sustain irrigation:  
 1130 rivers and reservoirs (1960-2050), *Hydrol. Earth Syst. Sci.*, 18, 4289-4310, doi:10.5194/hess-  
 1131 18-4289-2014, 2014. ~~Yoshikawa, S., Cho, J., Yamada, H. G., Hanasaki, N., Khajuria, A., and~~  
 1132 ~~Kanae, S.: An assessment of global net irrigation water requirements from various water~~  
 1133 ~~supply sources to sustain irrigation: rivers and reservoirs (1960-2000 and 2050), *Hydrol.*~~  
 1134 ~~*Earth Syst. Sci. Discuss.*, 10, 1251-1288, doi:10.5194/hessd-10-1251-2013, 2013.~~

1135 Zhu, X., Zhu, W., Zhang, J., and Pan, Y.: Mapping Irrigated Areas in China From Remote  
 1136 Sensing and Statistical Data, *IEEE Journal of Selected Topics in Applied Earth Observations*  
 1137 and Remote Sensing, 7, 4490-4504, doi:10.1109/jstars.2013.2296899, 2014.

1138 Zorner, R. J., Trabucco, A., Bossio, D. A., and Verchot, L. V.: Climate change mitigation: A  
 1139 spatial analysis of global land suitability for clean development mechanism afforestation and  
 1140 reforestation, *Agr Ecosyst Environ*, 126, 67-80, doi:10.1016/j.agee.2008.01.014, 2008.



1143 **Appendix A: Tables**

1144 Table A1. Area equipped for irrigation compiled from subnational statistics (AEI\_SU) in the  
 1145 Historical Irrigation Dataset (HID) and the FAOSTAT database (FAO, 2014) for years 1960,  
 1146 1980 and 2005 (ha). Only countries with considerable differences between AEI in HID and  
 1147 FAOSTAT are shown. Units are ha.

Country	HID 1960	HID 1980	HID 2005	FAOSTAT 1961	FAOSTAT 1980	FAOSTAT 2005
Australia	1,345,292	2,358,248	3,993,255	1,001,000	1,500,000	2,545,000
Austria	41,429	60,000	119,430	4,000	10,000	120,000
Canada	343,850	858,581	1,200,586	350,000	596,000	845,000
Ghana	13,750	20,000	59,000	6,000	6,000	33,000
Greece	563,702	961,000	1,593,780	430,000	961,000	1,593,780
Hungary	77,063	431,333	152,740	133,000	134,000	152,750
Italy	2,428,139	3,500,000	3,972,660	3,400,000	3,400,000	3,973,000
Mozambique	51,667	120,000	118,120	8,000	65,000	118,000
New Zealand	215,607	441,739	607,462	77,000	183,000	533,000
Pakistan	10,649,990	14,691,894	16,508,902	10,751,000	14,680,000	18,980,000
Peru	1,439,174	1,652,253	1,710,469	1,016,000	1,140,000	1,196,000
Portugal	615,173	850,049	616,970	850,000	860,000	617,000
Puerto Rico	40,469	26,709	37,020	20,000	20,000	22,000
Romania	191,409	2,301,000	808,360	206,000	2,301,000	3,176,000
Bosnia and Herzegovina	182	1,768	2,603	n.a.	n.a.	3,000
Croatia	1,640	1,768	16,000	n.a.	n.a.	12,300
Macedonia	28,176	113,998	127,800	n.a.	n.a.	128,000
Serbia and Montenegro	142,175	176,250	165,426	n.a.	n.a.	108,000
Slovenia	1,476	1,768	15,643	n.a.	n.a.	5,000
<i>Territory of former Yugoslav SFR</i>	<i>173,648</i>	<i>295,552</i>	<i>327,472</i>	<i>121,000</i>	<i>145,000</i>	<i>256,300</i>
Czech Republic	26,383	66,190	47,040	n.a.	n.a.	47,000
Slovakia	12,614	77,976	180,150	n.a.	n.a.	189,000
<i>Territory of former Czechoslovakia</i>	<i>38,997</i>	<i>144,165</i>	<i>227,190</i>	<i>108,000</i>	<i>123,000</i>	<i>236,000</i>
China (mainland)	29,833,519	48,801,498	61,899,940	n.a.	n.a.	n.a.
Taiwan, Province of China	488,697	546,646	492,452	n.a.	n.a.	n.a.
<i>China</i>	<i>30,322,216</i>	<i>49,348,144</i>	<i>62,392,392</i>	<i>45,206,000</i>	<i>48,850,000</i>	<i>62,276,000</i>
Eritrea	2,040	8,250	21,590	n.a.	n.a.	21,000
Ethiopia	34,900	110,830	290,729	n.a.	n.a.	290,000
<i>Territory of former Ethiopia PDR</i>	<i>36,940</i>	<i>119,080</i>	<i>312,319</i>	<i>150,000</i>	<i>160,000</i>	<i>311,000</i>
East Germany (former GDR)	55,000	894,400		n.a.	n.a.	
West Germany (former FRG)	250,354	281,715		n.a.	n.a.	
<i>Germany</i>	<i>305,354</i>	<i>1,176,115</i>	<i>565,274</i>	<i>321,000</i>	<i>460,000</i>	<i>510,000</i>
Occupied Palestinian Territory	18,000	19,000	23,484	18,000	19,000	24,000
Israel	136,000	200,300	183,407	136,000	203,000	225,000
Russian Federation	1,485,992	4,960,000	1,979,333	n.a.	n.a.	4,553,000

|

1148

1149

<i>Territory of former USSR</i>	<i>10,920,959</i>	<i>18,403,013</i>	<i>17,438,739</i>	<i>9,400,000</i>	<i>17,200,000</i>	<i>19,136,520</i>
<b>WORLD</b>	<b>144,465,731</b>	<b>227,419,542</b>	<b>305,742,007</b>	<b>160,994,000</b>	<b>220,768,600</b>	<b>308,456,470</b>

1150 Table A2. Area equipped for irrigation (AEI\_SU) in the Historical Irrigation Dataset (HID)  
1151 and the historical irrigation inventory at the national scale (Freydank and Siebert, 2008) for  
1152 years 1900, 1950 and 2000 (ha). Only countries with considerable differences between AEI in  
1153 HID and Freydank and Siebert (2008) output are shown. Units are ha.

COUNTRY	HID 1900	HID 1950	HID 2000	Freydank and Siebert 1900	Freydank and Siebert 1950	Freydank and Siebert 2000
Afghanistan	600,000	1,819,355	3,199,000	1,113,150	2,264,564	3,019,419
Algeria	171,550	238,792	569,418	22,630	228,528	569,418
Argentina	264,595	943,333	1,767,783	564,386	1,017,919	1,767,784
Australia	60,700	875,411	3,614,705	60,700	590,040	2,051,417
Austria	48,775	33,810	95,140	18,570	33,810	95,140
Azerbaijan	582,000	977,155	1,455,000	831,120	1,043,911	1,455,000
Brazil	400	64,000	3,142,523	64,000	64,000	3,080,000
Bulgaria	30,000	144,792	301,520	30,000	144,792	541,903
Canada	32,400	307,567	1,150,673	32,400	307,567	785,041
China	17,638,284	17,602,687	58,851,661	10,000,000	17,004,375	53,823,000
Ecuador	400	284,013	865,000	157,000	388,967	865,000
Germany	459,000	245,141	498,203	110,000	228,417	496,871
Indonesia	1,397,143	3,354,783	5,500,000	1,000,000	3,376,829	4,502,706
Iran	1,200,000	4,171,754	7,870,000	1,443,036	2,935,676	7,210,758
Kazakhstan	1,206,294	2,446,946	3,556,000	877,510	1,358,197	1,855,200
Libya	40,000	106,393	470,000	10,000	100,984	470,000
Mauritania	10,000	18,197	45,012	1,000	16,574	45,012
Mexico	1,000,000	2,255,911	6,398,500	1,000,000	1,398,569	6,476,923
Morocco	400,000	800,000	1,442,639	0	574,219	1,442,639
Mozambique	10,000	35,000	118,120	0	0	118,120
Netherlands	250,000	200,000	498,330	58,000	248,164	565,000
Nigeria	139,000	189,000	290,297	3,000	33,308	290,297
Norway	25,000	10,000	134,400	0	3,333	134,396
Peru	112,000	1,105,570	1,710,469	588,434	1,313,107	1,740,693
Poland	57,013	18,853	136,931	0	18,853	89,300
Portugal	200,000	495,923	791,990	19,120	214,080	791,990
Russia	214,000	890,598	3,766,300	88,030	2,305,543	5,003,140
Saudi Arabia	15,000	283,852	1,730,767	171,500	312,074	1,730,767
South Africa	161,600	649,457	1,498,000	404,000	743,100	1,498,000
Sri Lanka	100,000	292,623	570,000	100,000	176,111	665,000
Sudan (former)	200,000	759,776	1,863,000	100,000	592,655	1,863,000
Sweden	85,000	12,852	136,730	0	4,111	136,730
Switzerland	50,000	23,800	50,000	5,000	17,295	37,500
Turkmenistan	182,402	369,999	1,714,428	309,710	682,170	1,800,000
Ukraine	18,000	255,692	2,402,000	723	429,487	892,600
United Kingdom	40,000	36,667	246,720	0	20,000	248,180
United States	4,453,006	14,625,251	27,913,872	3,120,000	13,762,840	29,982,190
<b>WORLD</b>	<b>62,991,9917</b> <b>49,592</b>	<b>111,432,525,</b> <b>208851</b>	<b>296,617,598</b>	<b>53,262,286</b>	<b>108,421,278</b>	<b>284,676,758</b>

Formatted: Font: 10 pt

Formatted: Font: 10 pt

Formatted: Font: 10 pt

Formatted: Font: 10 pt

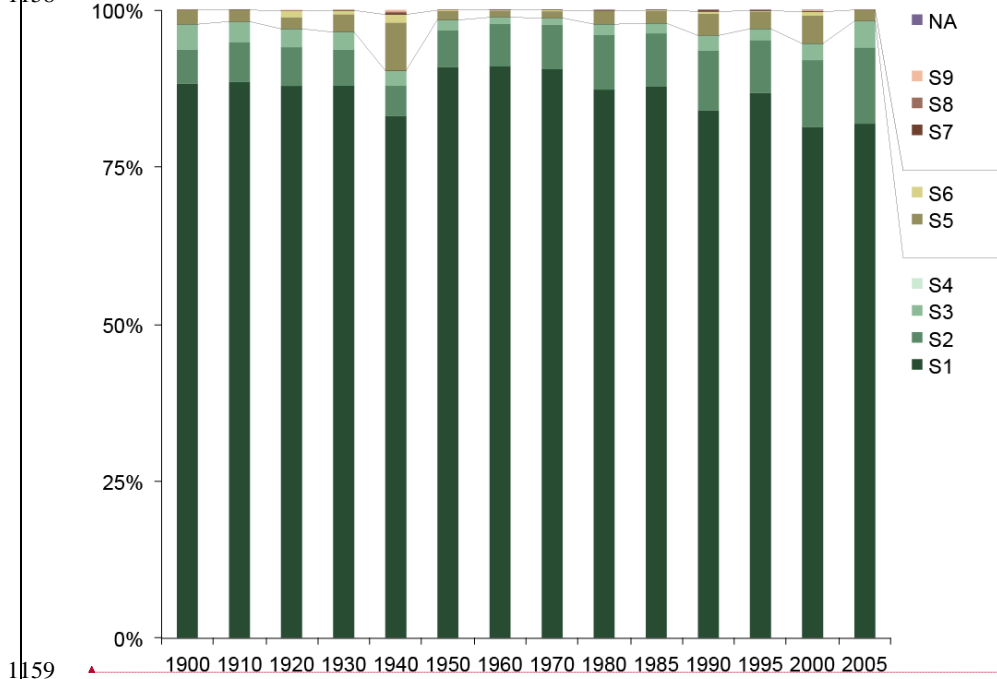
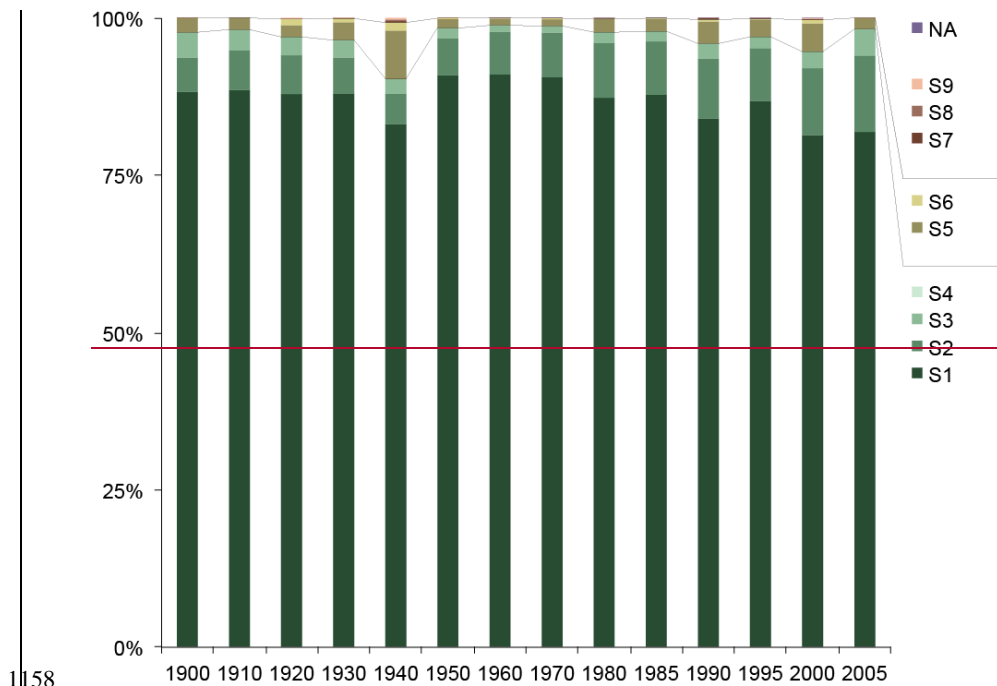
Formatted Table

Formatted: Font: 10 pt

Formatted: Font: 10 pt

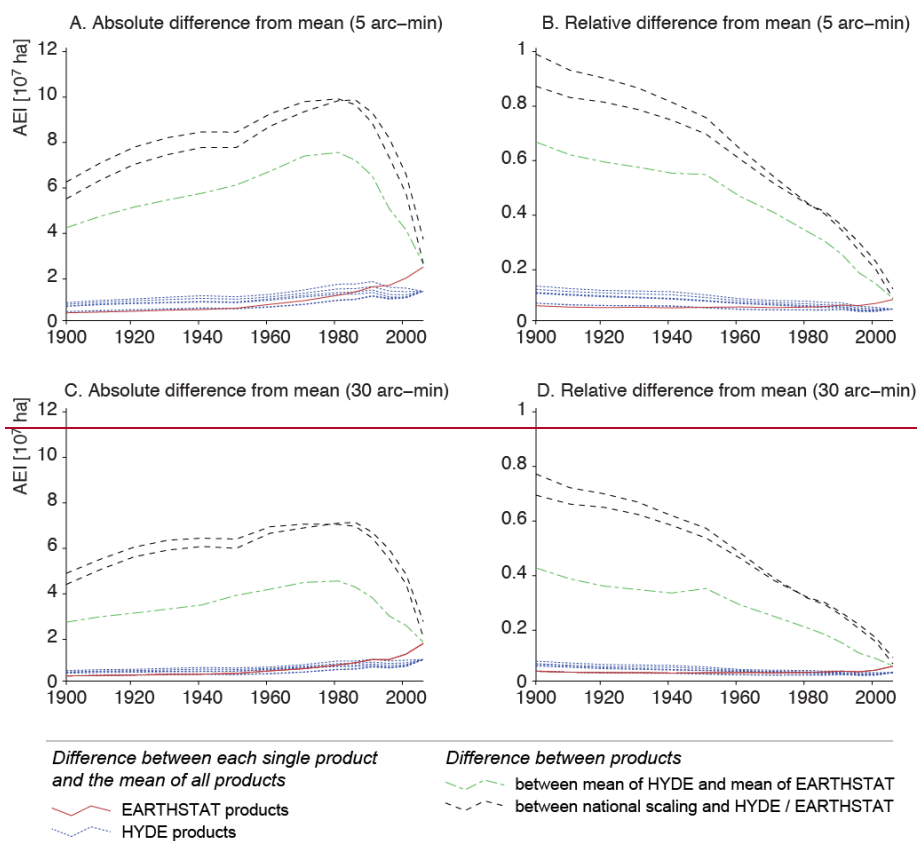
1154  
1155

1156    **Appendix B: Figures**  
1157



Formatted: Font color: Auto

1160 Figure B1. Relative percentage of AEI assigned to specific grid cells by the corresponding  
1161 hindcasting allocation steps for product AEI\_HYDE\_FINAL\_IR (see Table 1 for  
1162 specifications). See Figure 2 for the explanation of steps S1-S9. NA refers to AEI reported in  
1163 the subnational statistics but not assigned to grid cells (e.g. because the unit was too small to  
1164 show up in the gridded product).  
1165



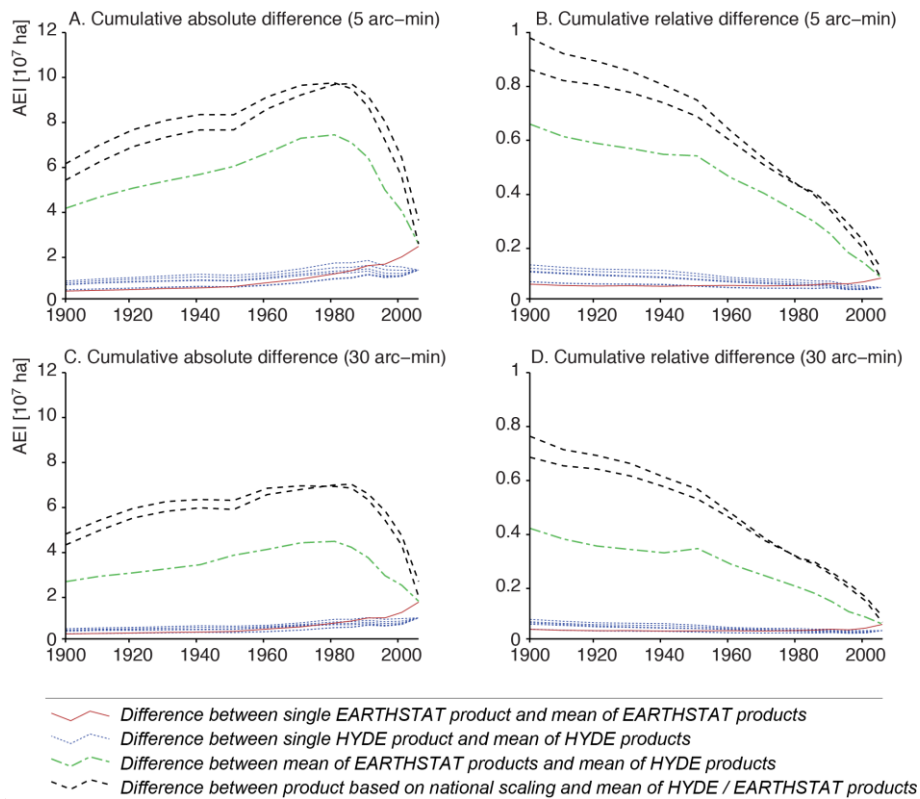


Figure B2. Cumulative absolute differences (A, C) of area equipped for irrigation (AEI) in hectares (ha) and cumulative difference relative to total AEI (B, D) calculated at 5 arc-minute resolution (A, B) and at 30 arc-minute resolution (C, D) and cumulative difference relative to total area equipped for irrigation between the single products and the mean of the EARTHSTAT and HYDE products, between mean of the EARTHSTAT and HYDE products and between different gridded products and between the newly developed gridded products and area equipped for irrigation according to the national scaling approach.

Formatted: Font color: Auto



1176 **Tables**

1177 Table 1. Spatial resolution, land use data used in downscaling of area equipped for irrigation  
 1178 compiled from subnational statistics (AEI\_SU), consistency rules in downscaling and AEI  
 1179 lost in downscaling for products in the global historical irrigation dataset HID.

Product	Spatial resolution	Land use data used in downscaling of AEI	Maximizing either consistency with AEI_SU (IR) or historical cropland and pasture extent (CP)	Difference between global AEI in the subnational irrigation statistics and AEI in the gridded version (ha)	
				Min	Max
AEI_SU	Subnational units, gridded to 5 arc-minutes	n.a.	n.a.	n.a.	
AEI_HYDE_LOWER_IR	5 arc-minute grid	HYDE 3.1 LOWER (Klein Goldewijk et al., 2011)	IR	0 (2005)	19,275 (1980)
AEI_HYDE_LOWER_CP	5 arc-minute grid		CP	10,529 (2005)	1,729,904 (1920)
AEI_HYDE_FINAL_IR	5 arc-minute grid	HYDE 3.1 FINAL (Klein Goldewijk et al., 2011)	IR	0 (2005)	19,275 (1980)
AEI_HYDE_FINAL_CP	5 arc-minute grid		CP	10,529 (2005)	1,378,940 (1900)
AEI_HYDE_UPPER_IR	5 arc-minute grid	HYDE 3.1 UPPER (Klein Goldewijk et al., 2011)	IR	0 (2005)	19,275 (1980)
AEI_HYDE_UPPER_CP	5 arc-minute grid		CP	10,529 (2005)	1,136,382 (1900)
AEI_EARTHSTAT_IR	5 arc-minute grid	Earthstat Global Cropland and Pasture Data from 1700-2007 ( <a href="http://www.earthstat.org">http://www.earthstat.org</a> )	IR	0 (2005)	18,695 (1980)
AEI_EARTHSTAT_CP	5 arc-minute grid		CP	140,058 (2005)	2,296,306 (1990)

1180

1181

1182 **Figures and figure captions**

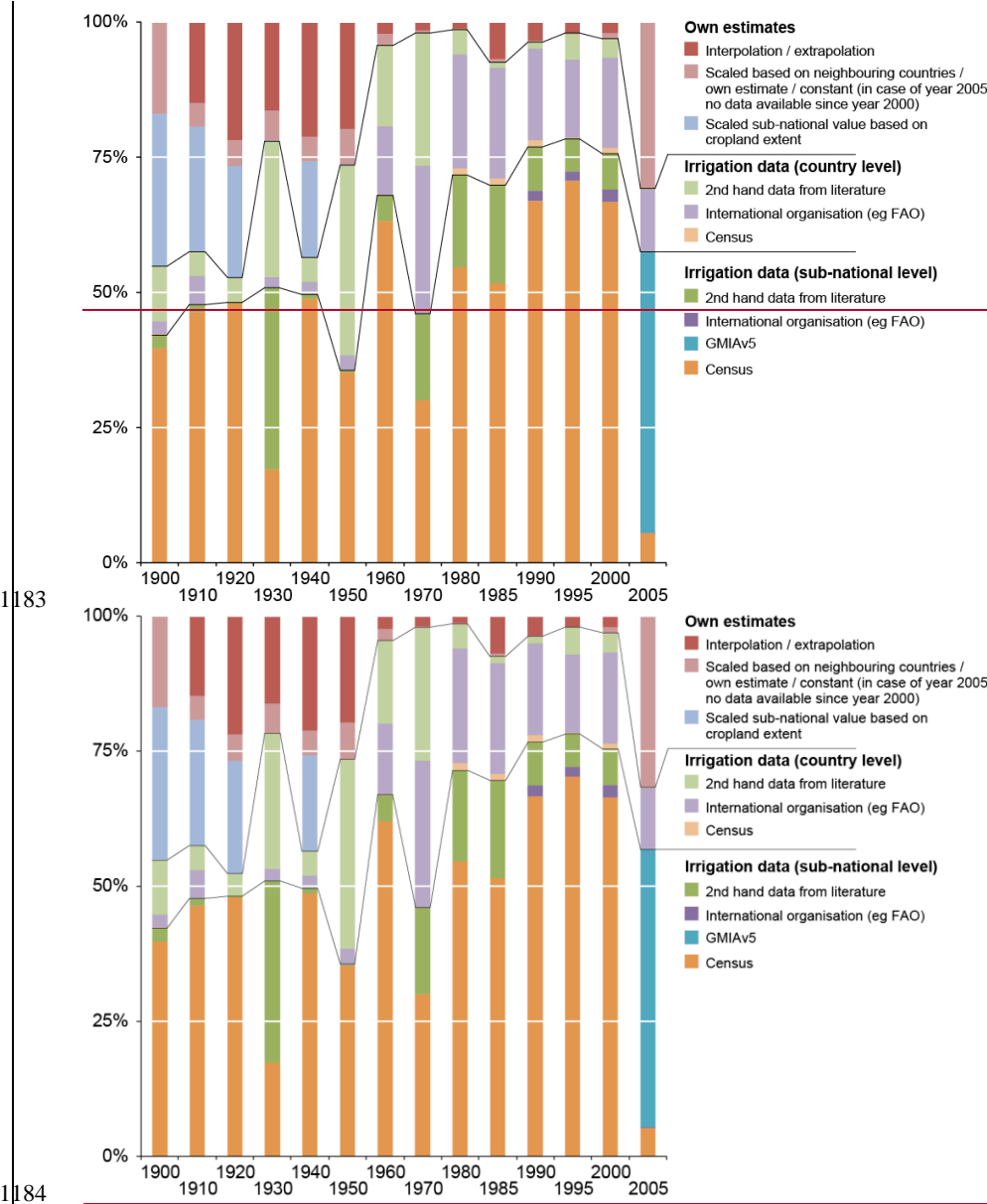


Figure 1. Overview of the types of input data used to develop the subnational inventory of historical statistics on the area equipped for irrigation (AEI\_SU) for the period 1900-2005. Please note: the spatial pattern of AEI\_SU in year 2005 is mainly determined by version 5 of

1188 the Global Map of Irrigation Areas GMIAv5 (Siebert et al., 2013), which again is based on  
1189 sub-national irrigation statistics, mainly at the second or third administrative unit level.  
1190

1191

		Maximizing consistency with subnational irrigation statistics (AEI_SU)	Maximizing consistency with historical cropland and pasture
In all grid cells with: <div>cropland cropland or pasture land area</div>	In grid cells with irrigated land in time step t+1	S1 $IRRI_{max} = \text{Min} (IRRI_{t+1}, \text{CROP})$	$IRRI_{max} = \text{Min} (IRRI_{t+1}, \text{CROP})$
		S2 $IRRI_{max} = \text{Min} (IRRI_{t+1}, \text{CROP}+\text{PAST})$	$IRRI_{max} = \text{Min} (IRRI_{t+1}, \text{CROP}+\text{PAST})$
		S3 $IRRI_{max} = \text{Min} (IRRI_{t+1}, \text{LAND})$	
		S4 $IRRI_{max} = IRRI_{t+1}$	
		S5 $IRRI_{max} = \text{Max} (IRRI_{t+1}, \text{CROP})$	$IRRI_{max} = \text{Max} (\text{CROP}, \text{Area in S2})$
		S6 $IRRI_{max} = \text{Max} (IRRI_{t+1}, \text{CROP}+\text{PAST})$	$IRRI_{max} = \text{CROP}+\text{PAST}$
		S7 $IRRI_{max} = \text{CROP}$ if $IRRI_{t+1}=0$ $IRRI_{max} = IRRI_{max}$ from S6 if $IRRI_{t+1}>0$	$IRRI_{max} = \text{CROP}$ if $IRRI_{t+1}=0$ $IRRI_{max} = \text{CROP}+\text{PAST}$ if $IRRI_{t+1}>0$
		S8 $IRRI_{max} = \text{Max} (IRRI_{t+1}, \text{CROP}+\text{PAST})$	$IRRI_{max} = \text{CROP}+\text{PAST}$
		S9 $IRRI_{max} = \text{Max} (IRRI_{t+1}, \text{LAND})$	

1192

1193 Figure 2. Illustration of the rules used to assign irrigated area to specific grid cells. The  
1194 maximum irrigated area in each grid cell ( $IRRI_{max}$ ) is calculated in steps S1-S9 depending on  
1195 irrigated area assigned to the grid cell in the previous time step ( $IRRI_{t+1}$ ), cropland extent in  
1196 the current time step (CROP), pasture extent in the current time step (PAST) and total land in  
1197 the grids cell (LAND). The assignment terminates, when the sum of  $IRRI_{max}$  for all grids cells  
1198 belonging to an administrative unit is greater than or equal to the irrigated area reported in the  
1199 subnational statistics for the administrative unit. Please notice: the previous time step is t+1  
1200 (and not t-1) as the procedure is marching back in time.

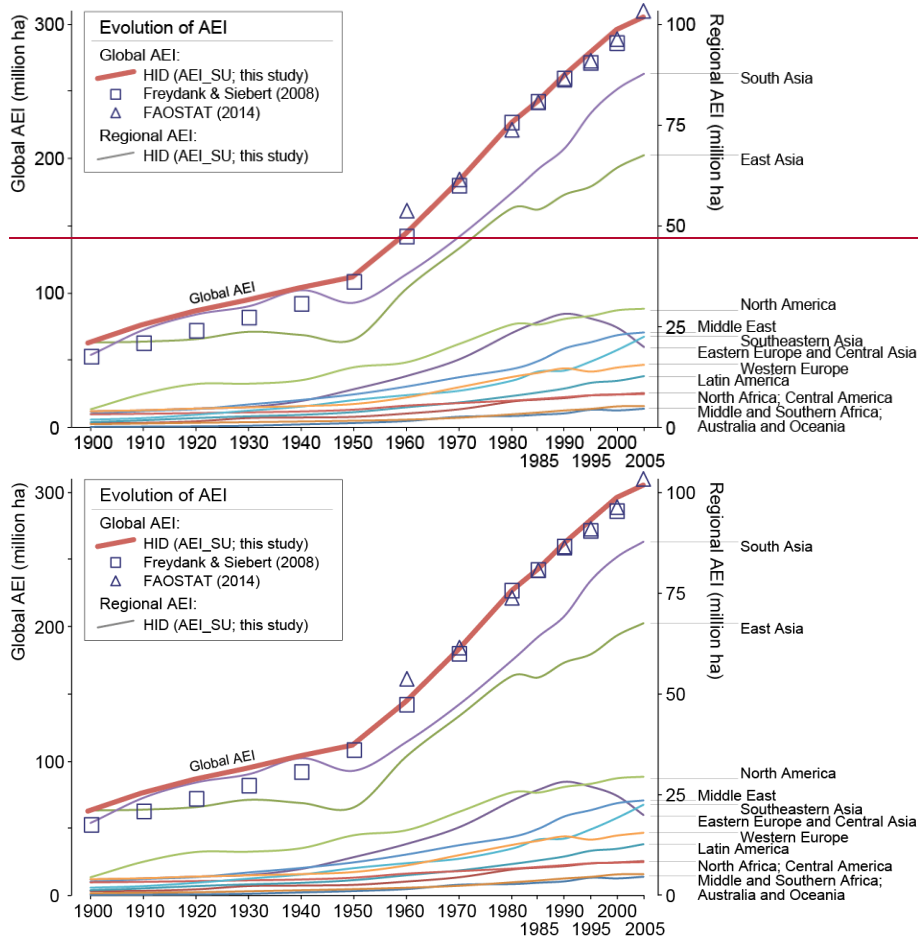
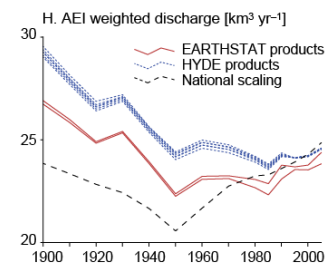
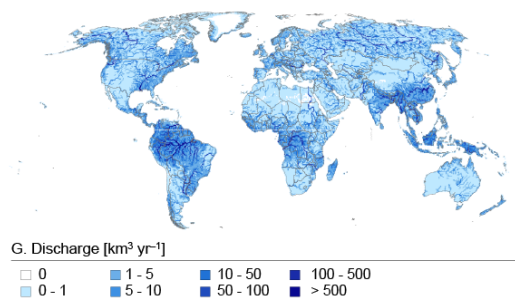
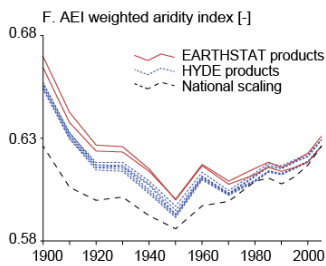
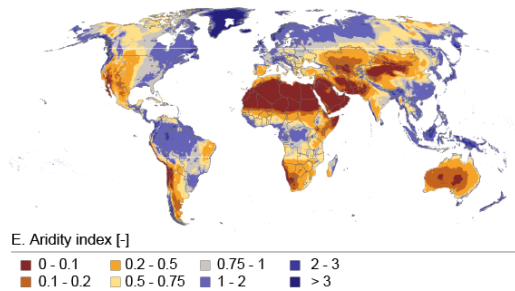
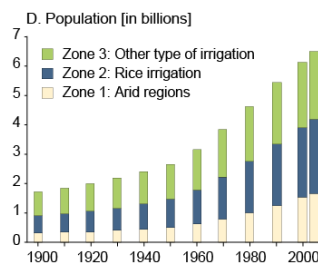
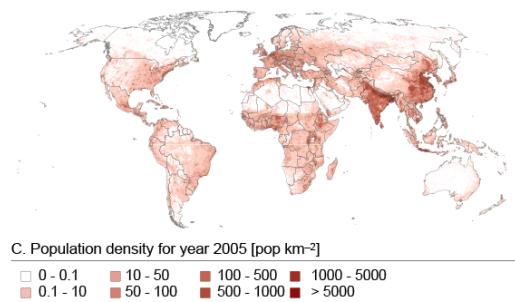
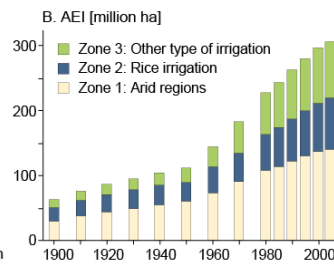
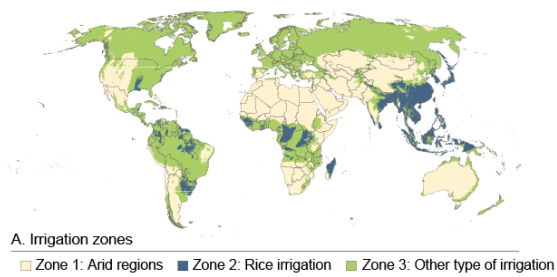


Figure 3. Evolution of regional (thin lines; right y-axis) and global (thick line and symbols; left y-axis) area equipped for irrigation (AEI) for the 20<sup>th</sup> century based on the subnational historical irrigation statistics (AEI\_SU) collected for the Historical Irrigation Dataset (HID), and of global AEI in Freydank and Siebert (2008) and FAOSTAT (2014).



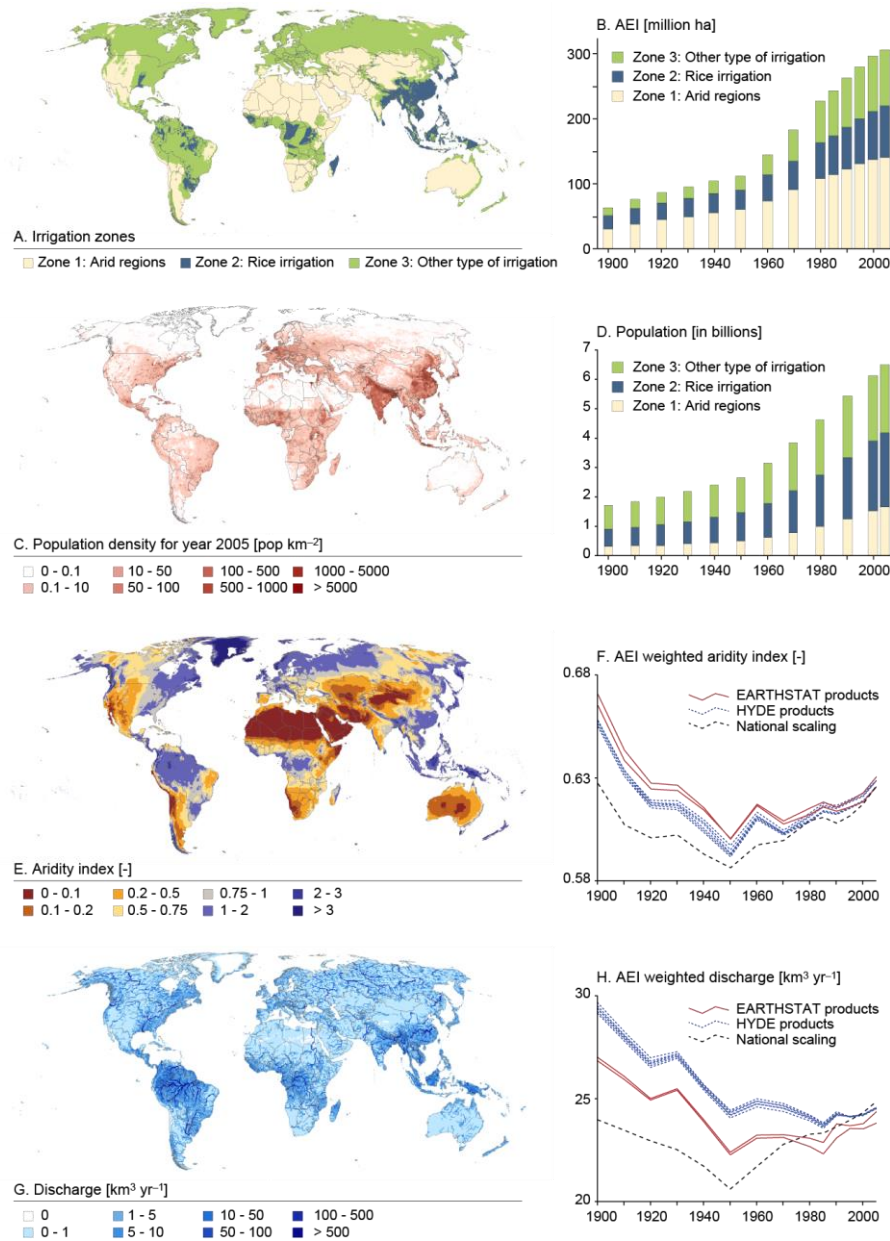


Figure 4. A: Classification of irrigation areas in dry areas, wet rice cultivation areas, and other wet irrigation areas and B: development of global AEI for historical irrigation dataset (HID; AEI\_HYDE\_FINAL\_IR) in these zones for the period 1900-2005; C: population density for year 2005 according to the HYDE database (Klein Goldewijk et al., 2010) and D: number of

1214 people in the three different irrigation zones in the period 1900-2005; E: Aridity index  
1215 according to the CGIAR-CSI Global Aridity and ET database (CGIAR-CSI, 2014; Zorner et  
1216 al., 2008) and F: change in mean aridity on irrigated land in the period 1900-2005; G: Mean  
1217 annual river discharge in the period 1961-1990 calculated with WaterGAP 2.2 (Müller  
1218 Schmied et al., 2014) and H: change in global mean of natural river discharge on irrigated  
1219 land in the period 1900-2005.



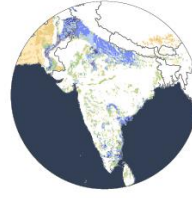
A. Global AEI 1900; HID



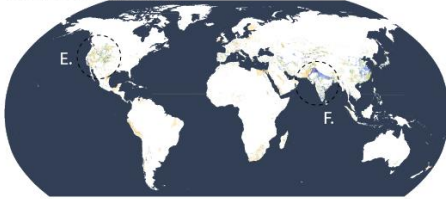
B. Western US 1900



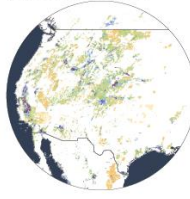
C. South Asia 1900



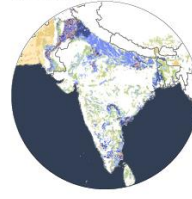
D. Global AEI 1930; HID



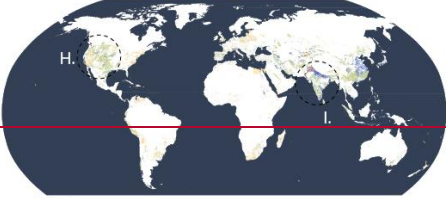
E. Western US 1930



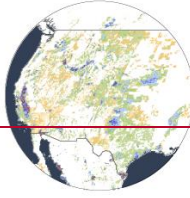
F. South Asia 1930



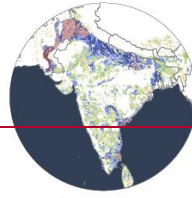
G. Global AEI 1960; HID



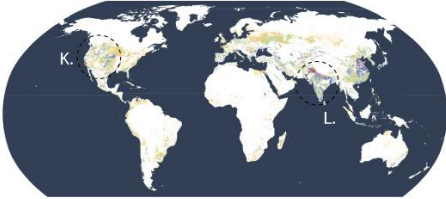
H. Western US 1960



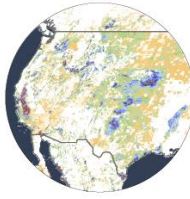
I. South Asia 1960



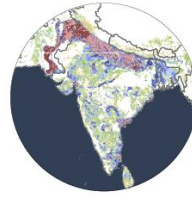
J. Global AEI 1980; HID



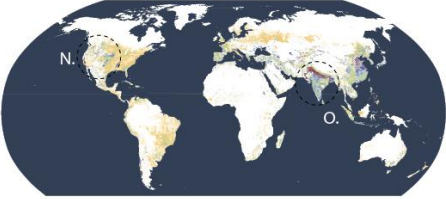
K. Western US 1980



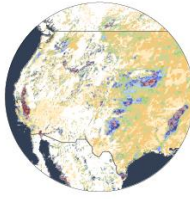
L. South Asia 1980



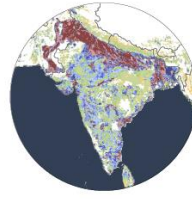
M. Global AEI 2005; HID



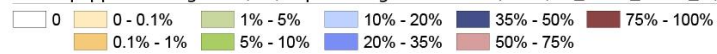
N. Western US 2005



O. South Asia 2005



Area equipped for irrigation (AEI) in percentage of land area; HID (AEI\_HYDE\_FINAL\_IR)



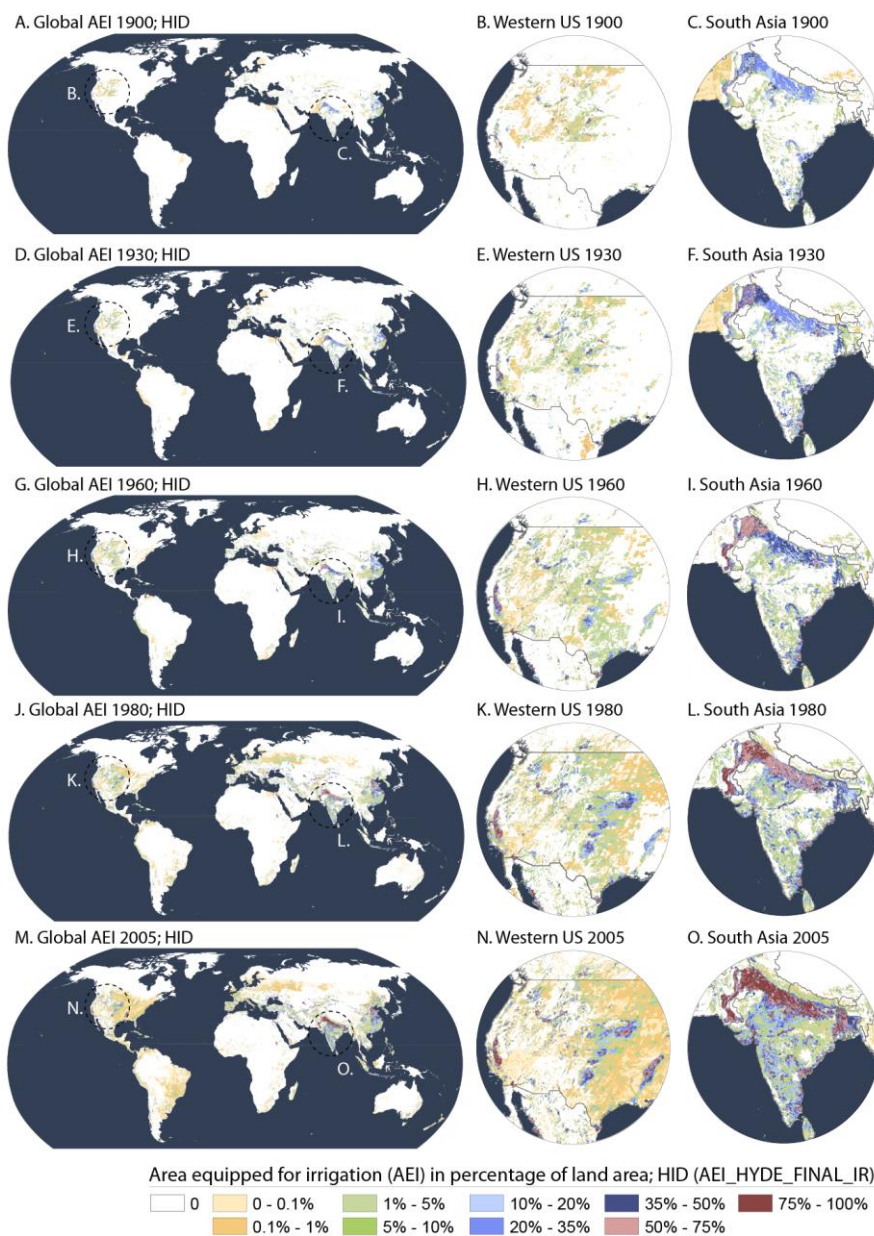
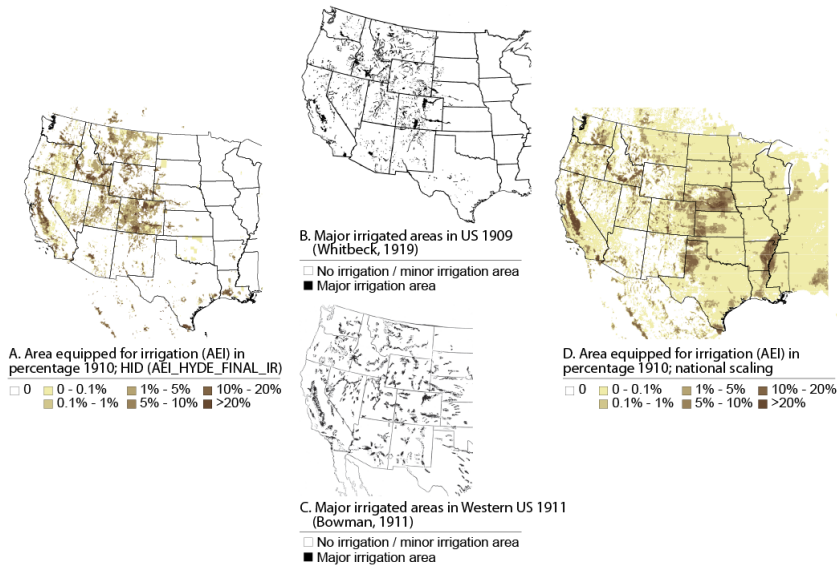


Figure 5. Spatial and temporal evolution of global area equipped for irrigation (AEI) for five time steps (1900, 1930, 1960, 1980, and 2005) based on the product AEI\_HYDE\_FINAL\_IR of the historical irrigation dataset (HID). The maps are presented at global scale and for two selected close-up areas, namely western USA and South Asia, for each time step.



1226

1227 Figure 6. Comparison of the historical irrigation dataset (HID) for year 1910 (developed using

1228 HYDE land cover, central estimate; AEI\_HYDE\_FINAL\_IR) with (A) a map showing

1229 irrigated area in the western part of the US in year 1909 (Whitbeck, 1919) (B), a map showing

1230 irrigated area in the western part of the US in year 1911 (Bowman, 1911) (C), and an

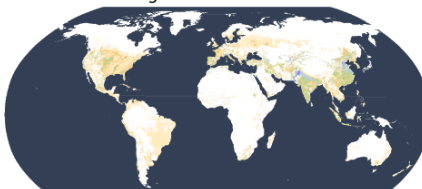
1231 irrigation map for year 1910 developed by multiplying area equipped for irrigation in year

1232 2005 with scaling factors derived from historical changes of AEI at country level (D).

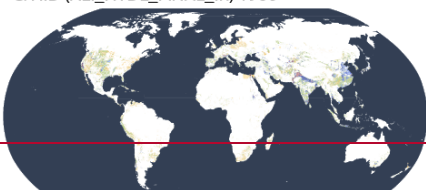
A. HID (AEI\_HYDE\_FINAL\_IR) 1900



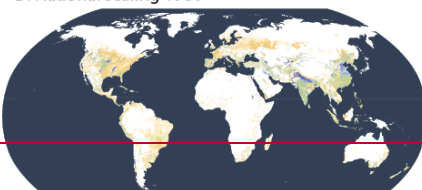
B. National scaling 1900



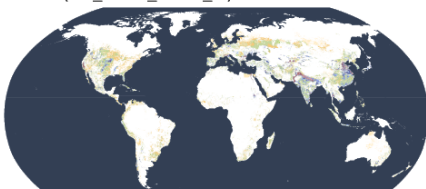
C. HID (AEI\_HYDE\_FINAL\_IR) 1960



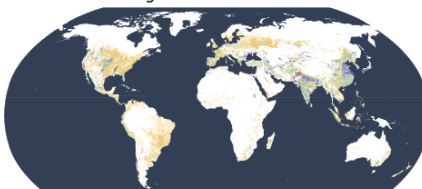
D. National scaling 1960



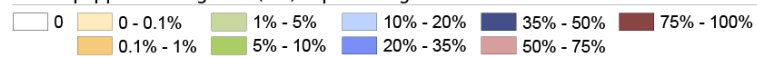
E. HID (AEI\_HYDE\_FINAL\_IR) 1980

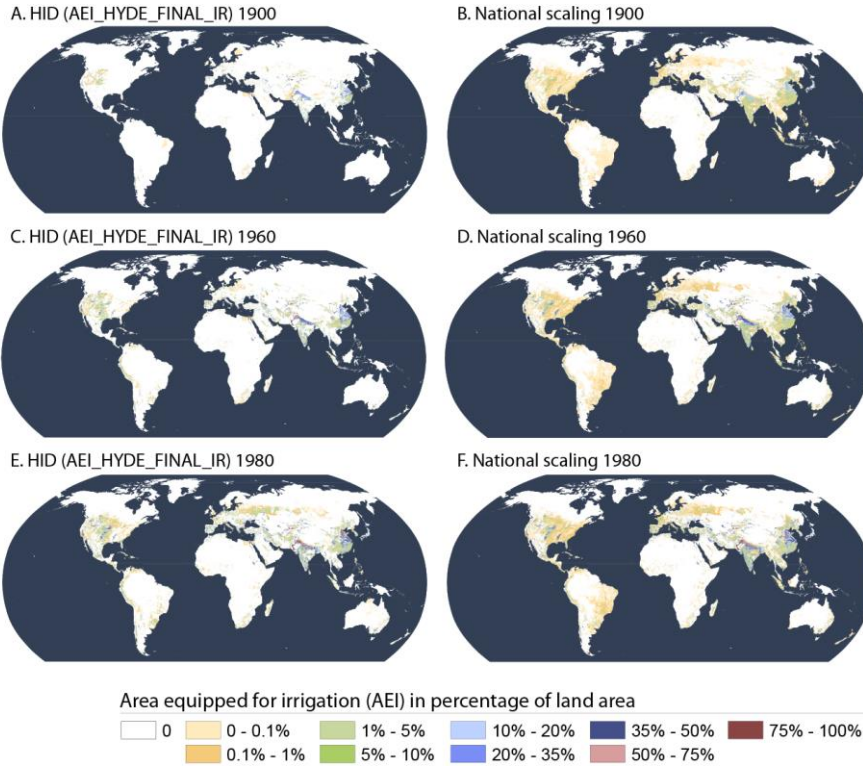


F. National scaling 1980



Area equipped for irrigation (AEI) in percentage of land area





Formatted: German (Germany), Do not check spelling or grammar

Figure 7. Comparison of the historical irrigation dataset (HID) (developed using HYDE land cover, central estimate; AEI\_HYDE\_FINAL\_IR) (A, C, E) to irrigation maps developed by multiplying area equipped for irrigation (AEI) in year 2005 with scaling factors derived from historical changes of AEI at country level (B, D, F) for years 1900 (A, B), 1960 (C, D) and 1980 (E, F).



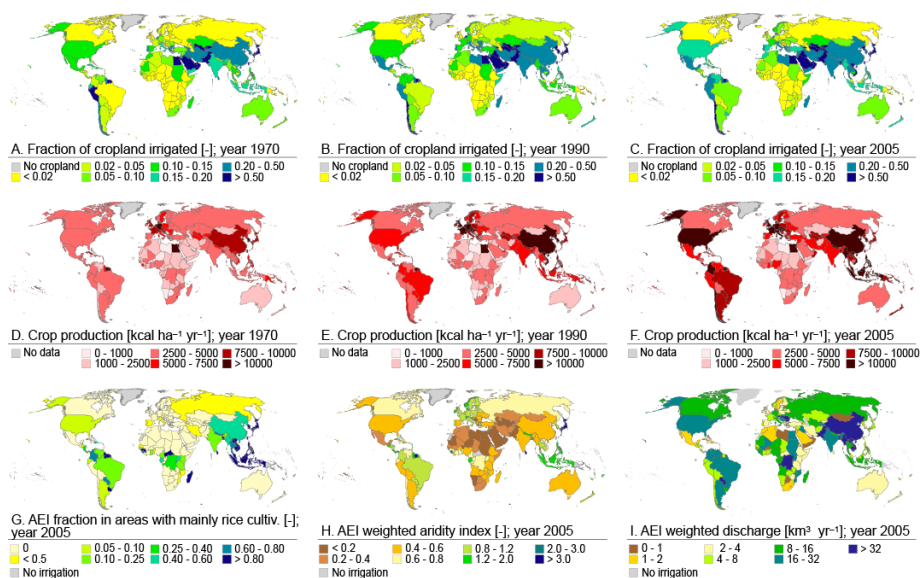


Figure 8. Ratio between the area equipped with irrigation according to the subnational irrigation statistics (AEI\_SU) used for the historical irrigation dataset (HID) and cropland extent (A – C) or total cropland productivity (kcal ha yr<sup>-1</sup>, D – F) per country for years 1970 (A, D), 1990 (B, E) and 2005 (C, F); fraction of AEI in regions with mainly rice irrigation (G), mean aridity weighted with AEI (H), and mean river discharge weighted with AEI (km<sup>3</sup> yr<sup>-1</sup>, I). Cropland productivity (kcal ha<sup>-1</sup> yr<sup>-1</sup>) was calculated based on crop production data for years 1969-1971 (D), 1989-1991 (E) and 2004-2006 (F) and cropland extent for years 1970, 1990 and 2005 extracted from the FAO FAOSTAT database (FAO, 2014b).