

# Response to review comments

Comments on the authors' responses and the revised manuscript of Shao et al.

## Comment 01:

The authors have incorporated all technical corrections and made minor revisions according to most of the reviewers' suggestions. Some points still need to be revised before publication, please see below.

## Reply 01:

We appreciate the dedication of both editor and reviewers helping us to present our work in a correct and clear manner. We now realize that our improvements as asked for during the first review phase were not as complete and clear as aimed for and thank the editor and reviewers for the opportunity to improve and clarify our manuscript further.

## Comment 02:

A more comprehensive streamlining of the argumentation and detailed discussion of the impact of the chosen model setup and scenario would have improved the paper even further. For example, the authors do not explain why a quite large part of the discussion is on the coupling term in dual-permeability models. And at least some speculations of how other possible combinations of parameters, soil materials or spatial heterogeneity would affect the results and if this needs to be addressed in further research would have been desirable. This would also relate to the effects of intermittent and variable rainfall, which is acknowledged as important in the discussion, but not related to the present study. Maybe the authors could still include that in the manuscript.

## Reply 02:

The focus of this paper is on the difference between the effect of low-intensity and high-intensity rainfall on slope stability. The numerical experiments were designed to describe the subsurface hydrological processes and soil mechanical processes in a potentially unstable slope. For a more comprehensive streamlining, revisions were made as follows:

(1) Discussion of the coupling term between the two domains in the dual permeability model.

The reasons for discussing the coupling term in dual-permeability models in detail have been added in the first paragraph of section 5.2. As the water exchange term has a significant impact on the model results, we compare our parameter settings with published studies to demonstrate that our chosen parameters are reasonable.

(2) Effect of different parameter combinations, soil materials and spatial heterogeneity.

We have added additional explanations of the parameter choices and why certain sets of parameters were selected in the fourth paragraph of section 3.2.

(3) Effect of intermittent variable rainfall.

Additional explanations of the effect of variations in rainfall were added to the fifth paragraph of section 3.2.

## Specific comments

### Comment 03:

13057, l. 12: Please describe the limitations that are important for your study, and pick that up in the discussion.

Answer 8: The limitation of this study is that only a liner-elastic model is used to calculate the stress field for slope stability analysis, the plastic deformation was not considered. Therefore the model can only be used to quantify the failure area and time, but cannot simulate a correct slope deformation after the failure.

### Reply 03:

In Revision 1, we included a sentence in the first paragraph of section 5 (Discussion): “A linear elastic model was used to calculate the stress field to quantify the failure area and timing, but plastic deformation after failure was not considered”. We now explicitly indicate that this means the model cannot quantify landslide displacements.

### Comment 04:

Answer 9: COMSOL should be mentioned at p. 3 ll. 15 – 25 as well, even if the authors did not make use / had access to the Geomechanics module of COMSOL, which seems to be available for the COMSOL software.

### Reply 04:

The paragraph lists geotechnical engineering software, and while COMSOL does indeed include a Geomechanics module, it is a general tool for solving differential equations, and we respectfully prefer not to mention it in this paragraph.

### Comment 05:

Answer 23: This expanded explanation (“at each point within a hillslope”) should be included in the manuscript, as the spatial dependence is not clear from eqs. 16 and 17.

### Reply 05:

We added that the simulated stress field is 2D in this study (above Eq. 14) and that the local factor of safety varies spatially (above Eq. 17) because the principal stress varies spatially (below Eq. 17).

### Comment 06:

Answer 28: I am still not sure what you mean by “a non-unique parameter set”. Inverse modelling may result in equifinal parameter sets, as this often is an ‘ill-posed’ problem. But in this case, there are more than one parameter sets. In contrast, the other approach you favour basically means that parameters are set arbitrarily without bothering to determine them from any data. While I still agree that this approach may be useful when using models as testable hypotheses, you may want to revise the argumentation in this direction.

### Reply 06:

We agree that this paragraph is, unfortunately, still a bit confusing. We modified the paragraph by stating that measurement is difficult (and removed the ‘non-unique parameter set’ comment), and then continued to state that we adopted the pragmatic approach of Vogel et al. (2000). The reviewer is right that a discussion on equifinality in parameter sets (derived by e.g. inverse modelling) is not the aim nor the approach we follow in our paper. So we left out the discussion of how to determine unique parameter sets as indeed we did not try to derive them from an experimental data-set.

**Comment 07:**

Answer 30: Please include this answer also in the revised version, that is, please indicate that saturation excess overland flow occurs, instead of “rainfall exceeds infiltration capacity”.

**Reply 07:**

We revised the text as: “For both models, all the rainfall infiltrates into the slope during the beginning of the rain event and when the soil gets saturated infiltration decreases and saturation excess overland flow occurs.”

**Comment 08:**

Answer 39: “Hazard assessment” is still in the heading (5.4), and should be replaced with “slope stability”. Instead, you replaced “slope failure” in the previous paragraph with “slope stability”, which should be undone.

**Reply 08:**

We will change the heading of 5.4 as “implications of preferential flow for slope stability.”

**Comment 09:**

Answer 42: Please discuss which effects could not be modelled with a single-domain approach, for example, when taking spatial heterogeneity or a bi-modal soil hydraulic parameterization into account (e.g., "Zurmühl, T ; Durner, W, 1996: Modeling transient water and solute transport in a biporous soil. WATER RESOURCES RESEARCH 32(4), 819-829, DOI: 10.1029/95WR01678"). p. 14, l. 24 – p. 15, ll 6: This paragraph, related to rainfall exceeding infiltration, needs clarification.

p19, ll. 11-13: “experimental studies ... show a non-equilibrium phenomenon between the two domains” – please cite references, and perhaps explain the “phenomenon”

**Reply 09:**

A single-domain approach (i.e. single-permeability model) cannot fully simulate preferential flow processes. The preferential flow will rapidly reach deep soil, and increase pore water pressure. As the simulated pore water pressure was further used to calculate the effective stress field and slope stability, therefore, the preferential flow will influence the slope stability results.

The non-equilibrium phenomenon is synonymous with preferential flow phenomenon, therefore two references are added to indicate the sources.

**Comment 10:**

You state that rainfall never exceeds infiltration capacity, nonetheless, infiltration rate drops in Fig.5a. You further state first that 90 % of the rainfall infiltrates into the matrix, later you write about 80% of infiltrated rainfall in the matrix.

**Reply 10:**

Revisions were made in the fourth paragraph of section 4.1 to illustrate why the percentage of preferential flow is dynamically changing. The implementation of a dual-permeability model needs to specify the infiltration flux on the surface boundary of the preferential domain and matrix domain. On the surface boundary, initially 90 % of the rainfall is specified infiltrating into the matrix, following the mathematical expression shown in page 13062, line 8-18, and equation 13. Inside the flow domain in the slope, the water exchange (shown in Fig.8) is driven by the pressure difference between domains, redistributing a percentage of the rainfall that is infiltrating in two domains. As shown in Fig.8, the direction of water exchange is from matrix domain to preferential flow domain, which means that part of the matrix flow turns to preferential flow. The simulated results show a phenomenon that the water is prone to flow into a preferential flow path under wet conditions.

**Technical comments**

**Comment 11:**

Heading 5.2. - Perhaps “Coupling term in THE dual-permeability model”

**Reply 11:**

Done.

# Quantification of the influence of preferential flow on slope stability using a numerical modeling approach

**W. Shao<sup>1</sup>, T.A. Bogaard<sup>1</sup>, M. Bakker<sup>1</sup>, and R. Greco<sup>2</sup>**

<sup>1</sup>Water Resources Section, Faculty of Civil Engineering and Geosciences, Delft University of Technology, Stevinweg 1, P.O. Box 5048, 2600 GA Delft, the Netherlands

<sup>2</sup>Dipartimento di Ingegneria Civile Design Edilizia e Ambiente, Seconda università di Napoli, via Roma 29, 81031 Aversa (CE), Italy

Correspondence to: W. Shao (w.shao@tudelft.nl)

## Abstract

The effect of preferential flow on the stability of landslides is studied through numerical simulation of two types of rainfall events on a hypothetical hillslope. A model is developed that consists of two parts. The first part is a model for combined saturated/unsaturated subsurface flow and is used to compute the spatial and temporal water pressure response to rainfall. Preferential flow is simulated with a dual-permeability continuum model consisting of a matrix domain coupled to a preferential flow domain. The second part is a soil mechanics model and is used to compute the spatial and temporal distribution of the local factor of safety based on the water pressure distribution computed with the subsurface flow model. Two types of rainfall events were considered: long duration, low-intensity rainfall, and short duration, high-intensity rainfall. The effect of preferential flow on slope stability is assessed through comparison of the failure area when subsurface flow is simulated with the dual-permeability model as compared to a single-permeability model (no preferential flow). For the low-intensity rainfall case, preferential flow has a positive effect on drainage of the hillslope resulting in a smaller failure area. For the high-intensity rainfall case, preferential flow has a negative effect on the slope stability as the majority of rainfall infiltrates into the preferential flow domain when rainfall intensity exceeds the infiltration capacity of the matrix domain, resulting in larger water pressure and a larger failure area.

## 1 Introduction

Landslides are commonly triggered by rainfall events. Hydrological models may be integrated with slope stability analysis methods to calculate the factor of safety and predict the time and magnitude of landslides (Crosta and Frattini, 2008; Shuin et al., 2012; Aleotti and Chowdhury, 1999; Westen et al., 2006). Combined hydro-mechanical models can roughly be divided into two types: simplified conceptual models (Montrasio and Valentino, 2008; Dai et al., 2002) and numerical models (Stead et al., 2001; Jing, 2003; Brinkgreve et al., 2010;

Pastor et al., 2008), and have different levels of complexity depending on the scale and the research purpose.

The limit equilibrium method or infinite slope stability approach are frequently integrated with Richards' equation (Lanni et al., 2013; Ng and Shi, 1998; Godt et al., 2008; Shuin et al., 2012; Wilkinson et al., 2002; Talebi et al., 2008; Greco et al., 2013) or conceptual models (Arnone et al., 2011; Simoni et al., 2008; Qiu et al., 2007) for landslide hazard evaluation. The limit equilibrium method and infinite slope approach assume or search for a potential failure surface. The factor of safety is defined as the ratio between the maximum retaining force and the driving force (e.g Lanni et al., 2013; Lu et al., 2012). Although the underlying assumptions of the slope failure mechanism have limitations (Huang and Jia, 2009; Griffiths et al., 2011), the simplified slope stability analysis method has low computational demand and is widely used for geotechnical analyses at the slope scale (Talebi et al., 2008; Tsai and Yang, 2006; Abramson, 2002), watershed and catchment scale (Borga et al., 2002a, b; Baum et al., 2010; Wilkinson et al., 2002).

The strength reduction method (Griffiths and Lu, 2005; Huang and Jia, 2009) or local factor of safety method (Lu et al., 2012) can result in similar factor of safety values and locations of the critical slip surface as the limit equilibrium method, while no assumption is needed about the critical failure surface (Griffiths and Lu, 2005; Hammouri et al., 2008; Kim et al., 1999). The location, shape, and magnitude of the plastic deformation area are used to quantify the slip surface and factor of safety (Griffiths and Lane, 1999). Geotechnical engineering software and numerical models – such as FLAC (Itasca, 2002), PLAXIS (Brinkgreve et al., 2010, based on the strength reduction method) – have been widely applied for slope stability analysis under the influence of transient hydrological conditions, such as rainstorms (Mukhlisin et al., 2008; Hamdhan and Schweiger, 2011) and reservoir water level variations (Huang and Jia, 2009; Zhou et al., 2014).

The Darcy–Richards equation is the most widely used approach in current software packages, but can not effectively simulate preferential flow resulting in rapid infiltration (Nieber and Sidle, 2010; Beven and Germann, 2013). In highly heterogeneous slopes, preferential flow and transport can fundamentally influence subsurface flow (Jarvis, 2007; Hendrickx

and Flury, 2001) and contaminant transport (Köhne et al., 2009; Allaire et al., 2009; Debieche et al., 2012; Zehe et al., 2001). A chain of connected macropores is commonly found in various types of soils, including forest soil and semiarid land (Uchida et al., 2001; Jarvis, 2007; Flury et al., 1994). For example, an earthworm burrow can extend from the surface deep into the soil, as can decayed plant roots or soil cracks (Jarvis, 2007; Beven and Germann, 1982; Hendrickx and Flury, 2001). The self-organizing preferential flow network will become active and hydraulically connected with an increase in soil saturation (Nieber and Sidle, 2010). The saturated hydraulic conductivity of preferential flow paths is significantly larger than that of the soil matrix (Beven and Germann, 1982; Köhne et al., 2009). A significant portion of subsurface stormflow (Uchida et al., 2004; Zhang et al., 2006; Beven, 1981) is transmitted via preferential flow paths (Nieber and Sidle, 2010). Preferential flow through macropores, fractures, and other local high-permeability zones is extremely rapid, and contributes instantly to high pore-water pressures in deep soils (Jarvis, 2007).

Quantification of landslide triggering mechanisms is an essential step in landslide forecasting. Some studies have shown that preferential flow is one of the major mechanisms affecting the timing and location of landslides (Sharma and Nakagawa, 2010; Uchida, 2004; Verachtert et al., 2013). In hillslopes, preferential flow paths, such as macropores, soil pipes and fissures, have been associated with slope stability (Hencher, 2010; McDonnell, 1990; Uchida et al., 2001; Krzeminska et al., 2012; Debieche et al., 2012). Besides the fact that internal erosion in preferential flow paths deteriorates the slope mass and reduces the soil shear strength, the occurrence of preferential flow can give rapid access to the deeper soil and groundwater system, reduce soil shear strength (due to pore pressure changes), and influence the timing and frequency of landslides (Wienhöfer et al., 2011; Uchida, 2004; Verachtert et al., 2013).

Preferential flow and solute transport have been simulated at various scales including the scales of pores, soil columns, hillslopes, and catchments (Šimůnek et al., 2003; Gerke, 2006; Köhne et al., 2009) using increasingly sophisticated models such as the dual-porosity/dual-permeability model (Gerke and van Genuchten, 1993a; Jarvis et al., 1991; Larsbo and Jarvis, 2003), the multi-permeability model (Wu et al., 2004; Greco, 2002; Gwo



et al., 1995), and conceptual models (Armstrong et al., 2000; Weiler, 2005; Mulungu et al., 2005). The dual-permeability model is widely used because of its clear physical concept and powerful simulating ability (Roulier and Jarvis, 2003; Kodešová et al., 2005; Gerke and Köhne, 2004; Köhne et al., 2006; Christiansen et al., 2004; Weiler, 2005; Therrien and Sudicky, 2005; Vogel et al., 2000). The dual-permeability model assumes that the soil consists of two interacting, overlapping pore domains. The matrix domain with relatively low permeability represents the soil micropores where flow is governed by Richards' equation. The preferential flow domain represents the highly permeable preferential flow paths, such as macropores, fractures, cracks, or large pores between soil aggregate. Preferential flow is described by Richards' equation (Šimůnek et al., 2008; Gerke and van Genuchten, 1993a) or the gravity-driven kinematic wave equation (Larsbo and Jarvis, 2003; Jarvis et al., 1991; Greco, 2002). The water exchange between the two domains is driven by the pressure head difference between the two domains (Pirastu and Niedda, 2010; Gerke and van Genuchten, 1993b). Dual-permeability models have proven to be effective for preferential flow simulation, but have not been incorporated into slope stability models.

The objective of this study is to quantify the temporal and the spatial effect of preferential flow on slope stability, and to analyze its underlying hydrological mechanisms using numerical experiments of rainfall-induced shallow landslides. This paper is organized as follows. First the subsurface dual-permeability hydrological model is described. The subsurface hydrological model is sequentially coupled with a soil mechanics model and a stress-field-based local factor of safety slope stability method (Sect. 2.2). The numerical experiments and parameterization are discussed in Sect. 3. The hydrological and geotechnical results are given in Sect. 4. The influence of preferential flow on subsurface hydrological processes and consequent slope stability is discussed in Sect. 5 by comparing the results of single and dual permeability models.

## 2 Methods

### 2.1 Subsurface flow model

The single-permeability model is described by one Richards' equation to represent flow in a homogenous soil. The dual-permeability model divides the flow domain into two overlapping and interacting continua, where two coupled Richards' equations are used to describe the matrix flow and preferential flow (Gerke and van Genuchten, 1993a):

$$[C_f + \Theta_f S_s] \frac{\partial h_f}{\partial t} = \nabla[K_f(\nabla h_f + \nabla z)] - \frac{\Gamma_w}{w_f} \quad (1)$$

$$[C_m + \Theta_m S_s] \frac{\partial h_m}{\partial t} = \nabla[K_m(\nabla h_m + \nabla z)] + \frac{\Gamma_w}{w_m} \quad (2)$$

where the subscript f indicates the preferential flow domain and the subscript m indicates the matrix domain.  $C$  is the differential water capacity ( $d\theta/dh$ ) ( $L^{-1}$ ),  $\Theta$  is the effective saturation ( $-$ ),  $h$  is the pressure head ( $L$ ),  $t$  is time ( $T$ ),  $z$  is the vertical coordinate (positive upward),  $K$  is the isotropic hydraulic conductivity ( $L T^{-1}$ ),  $S_s$  is the specific storage ( $L^{-1}$ ),  $w$  is the volumetric ratio of the preferential flow domain or the matrix domain over the total soil volume ( $-$ ), and  $\Gamma_w$  is the water exchange term ( $T^{-1}$ ) between the two domains.

The Brooks–Corey function is used to describe the hydraulic properties of both the matrix and preferential flow domains (Brooks and Corey, 1964):

$$\Theta = \frac{\theta - \theta_r}{\theta_s - \theta_r} = \begin{cases} |\alpha_{BC} h|^{n_{BC}}, & \alpha_{BC} h < -1 \\ 1, & \alpha_{BC} h \geq -1 \end{cases} \quad (3)$$

$$K = K_s \Theta^{2/n_{BC} + l_{BC} + 2} = K_s |\alpha_{BC} h|^{-2 - n_{BC}(l_{BC} + 2)} \quad (4)$$

$$C = -\frac{d\theta}{d|h|} = \begin{cases} \alpha_{BC} n_{BC} (\theta_s - \theta_r) |\alpha_{BC} h|^{-n_{BC}-1}, & \alpha_{BC} h < -1 \\ 0, & \alpha_{BC} h \geq -1 \end{cases} \quad (5)$$

where  $\theta$  is the water content ( $\text{L}^3 \text{L}^{-3}$ ), subscripts s and r denote saturation and residual state,  $K_s$  is the saturated hydraulic conductivity ( $\text{L T}^{-1}$ ), and  $\alpha_{BC}$ ,  $l_{BC}$ ,  $n_{BC}$ , are fitting parameters.

$\Gamma_w$  is the water exchange rate between the two domains (Ray et al., 1997):

$$5 \quad \Gamma_w = \alpha_w K_a (h_f - h_m) \quad (6)$$

where  $\alpha_w$  ( $\text{L}^{-2}$ ) is the effective water transfer coefficient, and the relative hydraulic conductivity  $K_a$  ( $\text{L T}^{-1}$ ) is calculated by averaging the hydraulic conductivities of the two pore domains (Arora et al., 2011; Laine-Kaulio et al., 2014):

$$K_a = \frac{K_f + K_m}{2}. \quad (7)$$

10 The volumetric ratio of the preferential flow domain and matrix domain sum up to one:

$$w_f + w_m = 1. \quad (8)$$

The total water content of the soil is the weighted average of the water contents of the two domains:

$$\theta = w_f \theta_f + w_m \theta_m. \quad (9)$$

15 The same holds for the total saturated hydraulic conductivity of the soil:

$$K_s = w_f K_{sf} + w_m K_{sm}. \quad (10)$$

Boundary conditions may be specified for pressure head, specified flux, or mixed (Chui and Freyberg, 2009). In the case of a dual-permeability model, specified flux  $i$  (infiltration from rainfall) is divided between the matrix and preferential flow domains:

$$20 \quad i = w_f i_f + w_m i_m \quad (11)$$

where  $i_m$  and  $i_f$  are boundary fluxes to the matrix and the preferential flow domains ( $L T^{-1}$ ), respectively. The two domains have an equal opportunity to receive rainfall and are initially equal to rainfall intensity  $R$  (Dusek et al., 2008):

$$R = i = i_f = i_m. \quad (12)$$

- 5 As the matrix domain has a larger volumetric ratio ( $w_m > w_f$ ), the infiltration process is initially dominated by the matrix domain. The infiltration capacity of each domain is the product of saturated hydraulic conductivity and the pressure head gradient of each domain. Once the specified flux into the matrix is larger than its infiltration capacity, the boundary condition changes to specified pressure head and the specified flux for the preferential flow domain is increased to:

$$10 \quad i_f = \frac{R - w_m i_m}{w_f}. \quad (13)$$

Once the specified flux into the preferential flow domain is also larger than the infiltration capacity, the boundary conditions of both the matrix and the preferential flow domain are changed to a specified pressure head of zero and overland flow occurs.

## 15 **2.2 Slope stability analysis method**

The slope stability analysis is based on the local factor of safety approach (Lu et al., 2012). The plane-strain linear elasticity model is used to calculate the ~~stress~~ 2D stress field (Abramson, 2002), which is governed by a momentum balance equation:

$$\nabla(\boldsymbol{\sigma}) + \gamma \boldsymbol{b} = 0 \quad (14)$$

- 20 where  $\boldsymbol{\sigma}$  is a stress tensor ( $ML^{-1}T^{-2}$ ) with three independent stress variables in two-dimensional space,  $\gamma$  is the bulk unit weight of the slope material ( $ML^{-2}T^{-2}$ ), and  $\boldsymbol{b}$  is the unit vector of body forces with two components. The effective stress equation can be formulated as:

$$\boldsymbol{\sigma}' = \boldsymbol{\sigma} - \chi p_w \quad (15)$$

where  $\sigma'$  is the effective stress,  $p_w$  ( $\text{M L}^{-1} \text{T}^{-2}$ ) is the pore water pressure, and  $\chi$  (–) is the matrix suction coefficient, which is usually approximated by the effective saturation (Lu et al., 2010).

The local factor of safety  $F_{\text{LFS}}$  is defined as the “ratio of the Coulomb stress at the current state of stress to the Coulomb stress of the potential failure state under the Mohr–Coulomb criterion” (Lu et al., 2012):

$$F_{\text{LFS}} = \frac{\tau^*}{\tau} \quad (16)$$

where  $\tau^*$  is the limit Coulomb stress and  $\tau$  is the actual shear stress ( $\text{M L}^{-1} \text{T}^{-2}$ ). Application of the Mohr–Coulomb failure criterion gives the local factor of safety at every point in the hillslope:

$$F_{\text{LFS}} = \frac{2 \cos \phi'}{\sigma'_1 - \sigma'_3} \left[ c' + \frac{\sigma'_1 + \sigma'_3}{2} \tan \phi' \right] \quad (17)$$

where  $c'$  is the effective cohesion ( $\text{M L}^{-1} \text{T}^{-2}$ ),  $\phi'$  is the friction angle, and  $\sigma'_1$  and  $\sigma'_3$  are the first and the spatially varying first and third principal effective stress for the variably saturated soil ( $\text{M L}^{-1} \text{T}^{-2}$ ).

The influence of hydrology on slope stability is manifested in two ways. First, the unit weight function depends on the water content (Eq. 9). Second, the effective stress depends on the pore water pressure. In the dual-permeability model, the pore water pressure of the preferential flow domain is used in the computation of the effective stress.

Figure 1 summarizes the structure of coupled dual-permeability and slope stability model. Two Richards' equations are coupled by the water exchange function. The hydrological results are sequentially coupled with a soil mechanics model without considering possible feedback of soil deformation on soil properties and the hydrological process.

In this study, COMSOL Multiphysics is used to develop a coupled hydrological and slope stability model for both single-permeability and dual-permeability subsurface flow (Shao et al., 2014). For subsurface flow computations, COMSOL Multiphysics facilitates variable

mesh resolution to optimize between coarse and fine mesh density to balance computation time and improve the numerical solution where needed. The time discretization depends on the convergence of the numerical solution, which is automatically adjusted by the software. The technical details and model validation can be found in Shao et al. (2014).

## 3 Setup of the numerical experiments

### 3.1 Slope geometry

Consider a slope of  $23^\circ$  consisting of fine-grained lithology such as clay shales with a more permeable weathered top soil layer (Bogaard, 2002; Berti and Simoni, 2012; Picarelli et al., 2006); this is a typical slope that is vulnerable to failure. The slope is 6 m high and 15 m long and consists of two layers with a 2 m thick homogeneous upper soil layer (see Fig. 2).

The model domain is 42 m by 25 m to reduce the effects of specified boundary conditions along the model boundary. The computational mesh and the boundary conditions are shown in Fig. 2. The boundary conditions of the subsurface flow model are atmospheric at the surface; the left-hand and bottom sides are no-flux boundaries. The right-hand side consists of a seepage boundary condition for the upper soil layer and a specified pressure head to mimic a constant groundwater table for the lower layer. For the soil mechanics model, the surface is a free boundary, the bottom boundary (only horizontal displacements) and the left- and right-hand sides (only vertical displacements) are all roller boundaries.

Since the pressure head in the surface area can change drastically during rainfall, a very dense mesh was used near the surface to accurately model the transient hydrological conditions. The mesh density of the upper layer is approximately 0.25 m (vertical) by 0.5 m (horizontal). A coarser mesh was defined in the lower part of the slope as a less dynamic condition will occur here.

### 3.2 Parameterization

The volumetric ratio of the preferential flow domain  $w_f$  is 0.1; a typical range is  $0.025 \sim 0.2$  (Köhne et al., 2002). The pore-size distribution of the preferential flow domain allows unsaturated infiltration before the matrix domain is saturated (Dusek et al., 2008). A comparison is made between the hydrological results of the single-permeability and the dual-permeability models. The total weighted saturated hydraulic conductivity of the dual-permeability model is equal to the saturated hydraulic conductivity of the single-permeability model. The water exchange between the matrix and preferential flow domains depends on the hydraulic conductivity between the two domains  $K_a$  and the water exchange coefficient  $\alpha_w$  (Eq. 6). Equilibrium between the preferential flow and matrix domains is reached quicker for smaller values (closer to 1) of  $K_{sf}/K_{sm}$  and larger values of  $\alpha_w$ . Moderate values are used for  $K_{sf}/K_{sm}$  (100 in the upper layer and 5 in the lower layer) and for  $\alpha_w$  ( $0.2 \text{ m}^{-2}$ ).

The soil hydraulic parameters are presented in Table 1. Preferential flow plays an important role in the upper soil layer where there is an abundance of macropores, but less so in the lower soil layer where macropores are almost non-existent (e.g. Bogner et al., 2013). In other words, the volumetric percentage of preferential flow domain is still the same, but in the lower layer the saturated hydraulic conductivity of macropores are more similar to the pores of the matrix. The more permeable top layer is sandy loam and the fine-grained lower layer is clay; the soil hydraulic parameters are taken from the UNSODA database (Nemes et al., 2001; Leij, 1996).

~~Current laboratory practice for soil hydraulic testing cannot measure the parameters for two hydraulic functions and two water retention curves for one soil sample (Arora et al., 2011; Köhne et al., 2009). There are two approaches to parameterize a~~ Parameterization of soil hydraulic properties for ~~dual-permeability model. The first approach determines the parameters from an infiltration experiment and inverse modeling, which results in a non-unique parameter set (Dusek et al., 2008; Köhne et al., 2002; Arora et al., 2011). The second approach, which is adopted for this study, uses~~ models is difficult as the two conceptualized domains cannot

be experimentally separated. In this paper, the pragmatic approach of Vogel et al. (2000) is adopted: the same hydraulic parameters are adopted for both domains, except for the saturated hydraulic conductivities (Vogel et al., 2000).

The parameters of the soil mechanics model are also shown in Table 1. The slope stability is a function of two parameters: the friction angle and the effective cohesion. Decreasing the friction angle or increasing the effective cohesion leads to a higher factor of safety. The friction angle is physically constrained in a narrow range, and in this study is fixed. In numerical modeling, effective cohesion  $c'$  is scale dependent, and is usually defined as a linear function of the slope height to obtain identical values of the safety factor when applying it to different slope sizes (Griffiths and Lane, 1999; Lu et al., 2012). Very low values of effective cohesion result in initially unstable slopes, and very high values of effective cohesion results in slopes that are unconditionally stable. In this study, two sets of cohesion values were selected ;in the range that may result in rainfall-triggered landslides: a homogeneous case where the effective cohesion of both layers is 5 kPa and a case where the effective cohesion of the upper layer is smaller ( $c'_1 = 3$  kPa) than the lower layer ( $c'_2 = 6$  kPa).

Intermittent and variable rainfall may significantly influence the pressure response in the shallow layer soil. While, the pressure response in the deeper layer soil is driven by percolation and less dynamic to intermittent rainfall. Two rainfall events are modeled: a low-intensity rainfall of  $2 \text{ mm h}^{-1}$  for 150 h and a high-intensity rainfall of  $20 \text{ mm h}^{-1}$  for 15 h. The two rainfall events are expected to result in distinctly different slope stabilities, even through the total rainfall of both events is equal. The initial condition is the steady pore water pressure distribution obtained from running the model with a daily rainfall of  $1.64 \text{ mm day}^{-1}$  ( $600 \text{ mm year}^{-1}$ ) for 10 years.



## 4 Results

### 4.1 Subsurface flow

A schematic diagram of the subsurface flow components in the study area is shown in Fig. 3. Note that the study area is a small part of the model domain (Fig. 2). The main fluxes are the infiltration from rainfall (blue), the inflow/outflow along the left side and bottom (black), the seepage outflow along the surface (red) and the outflow along the right boundary (green).

Hydrological results for the single- and dual-permeability models are shown in Figs. 4 and 5, respectively. The graphs on the left are results for the long-duration, low-intensity rainfall case while the graphs on the right are results for the short-duration, high-intensity rainfall. Integrated fluxes, as shown in Fig. 3, are reported in  $\text{m}^2 \text{h}^{-1}$ .

For both models, all the rainfall infiltrates into the slope during the beginning of the rain event and ~~infiltration decreases when rainfall exceeds infiltration capacity and part of the rainfall turns into overland flow when the soil gets saturated~~ infiltration decreases and saturation excess overland flow occurs. For the single-permeability model and low-intensity rainfall overland flow starts after 95 h (or 190 mm of rainfall) while for the high intensity rainfall overland flow starts after 8.5 h (or 170 mm of rainfall) (Fig. 4a and b).

In the dual-permeability model (Fig. 5), the rainfall infiltration is divided over the two domains and additional rainfall infiltrates into the preferential flow domain when the matrix domain reaches infiltration capacity. Recall that the matrix ~~domains~~ domain is 90 % of the domain, and the preferential flow domain is 10 % of the domain. A smaller fraction of rainfall infiltrates into the preferential flow domain for the case of low-intensity rainfall (10–15 %) than for the case of high-intensity rainfall (50–85 %). Overland flow starts after 80 h (or 160 mm of rainfall) for the low-intensity case and after 60 h (or 120 mm of rainfall) for the high-intensity case.

The seepage outflow increases along the left, right, and bottom boundaries during the rainfall event (Figs. 4c, d, and 5c, d) and is smaller than the infiltration rate (storage is increasing). In the dual-permeability model and the low-intensity rain, outflow along the surface boundary starts after 115 h (or 230 mm of rainfall) while for the high-intensity rain

outflow starts after 9 h (or 180 mm rainfall). The outflow rate along the surface boundary depends on the groundwater level in the upper layer. In the dual-permeability model, the outflow along the right boundary is approximately 10 times larger for the preferential flow domain than for the matrix domain, which is consistent with their volumetric ratio and their saturated hydraulic conductivity ratio. The water exchange between the two domains in the dual-permeability model is shown in Fig. 5e and f. For the low-intensity rainfall case, the water exchange from the preferential flow domain to the matrix domain increases during the first 100 h and then decreases, while the water exchange from the matrix domain to the preferential flow domain is almost always increasing (more negative). For the high-intensity rainfall case, the water exchange from the matrix to the preferential flow domain is negligible, while the water exchange from the preferential flow domain to the matrix domain reaches more than  $0.3 \text{ m}^2 \text{ h}^{-1}$ , which is similar to the infiltration into the preferential flow domain. After five hours, approximately 75 % of infiltration into the matrix domain is water exchange from the preferential flow domain (Fig. 5f) and 25 % infiltration from the surface boundary (Fig. 5b).

## 4.2 Water balance

The integrated rainfall and water storage for the study area are shown for both models in Fig. 6. The water balance is obtained by integrating all flow components along the boundaries of the study area. The numerical water balance errors are between 2 and 3 %.

For all cases, the storage increase flattens out when the inflow decreases (Figs. 4 and 5). For the high-intensity rainfall, the dual-permeability model stores 8 % less water than the single-permeability model. The total storage after 150 h of low-intensity rainfall is less than after 15 h of high-intensity rainfall, probably caused by the longer time that water can drain from the study area under low-intensity rain.

For the dual-permeability model, the water exchange has a significant influence on the storage change in each domain. For the low-intensity rainfall, the storage in the preferential flow domain does not increase much after 6 h (Fig. 6). For the high-intensity rainfall, the storage in the preferential flow domain increases rapidly over the first 3 h as very little wa-

ter infiltrates into the matrix domain due to the low infiltration capacity of the matrix. After 3 h, the preferential flow domain has almost reached full saturation and the large pressure difference between the preferential flow domain and matrix domain causes extensive water exchange (Fig. 5f).

### 4.3 Water content

The water content distribution in the study area is shown in Fig. 7 for both the single-permeability model (left-hand panels) and the dual-permeability model (center and right-hand panels). The water exchange rate between the matrix and preferential flow domains of the dual-permeability model is shown in Fig. 8. The infiltration process of the dual-permeability model differs significantly from that of the single-permeability model.

The initial water content distribution in the matrix and preferential flow domains is similar for both models. During the rainfall events, the wetting front in the single-permeability model develops parallel to the surface and propagates downward. This holds for both low and high rainfall intensities (Fig. 7 left-hand column). The wetting front generally reaches the groundwater table at the toe of the slope first, after which the infiltrated water continuously enlarges the saturated area.

In the dual-permeability model, the combined effects of the preferential flow and the matrix flow show a more complicated response. For the low-intensity rainfall, infiltration is dominated by matrix flow, as 90 % of the subsurface consists of the matrix. Because the rainfall intensity is lower than the saturated conductivity of the matrix domain, ~~rainfall never exceeds infiltration capacity (Fig. 5a), so that on the surface boundary,~~ 90 % of the rainfall infiltrates into the matrix domain and 10 % of the rainfall infiltrates into the preferential flow domain. The pressure difference between the two domains drives the water exchange at the matrix wetting front (Figs. 5e and 8a). Inside the flow domain of the slope, 10 % of matrix flow transferred to preferential flow due to water exchange in the soil. At first, water quickly reaches the soil layer interface by preferential flow where it transmits to the matrix, although this exchange flux is very small (Figs. 5e and 8a). After sufficient time (70 h), a much stronger matrix flow (taking about 80 % of the infiltrated rainfall) reaches the soil

layer interface and generally reverses the water exchange direction (Fig. 5e). Overall, water exchange during low-intensity rainfall in the study area is dominated by flow from the matrix to the preferential flow domain (Fig. 8a and b).

For the high-intensity rainfall, the rainfall intensity is 8.4 times the matrix saturated hydraulic conductivity. The percentage of infiltration into the matrix domain decreases from 90 to 50 % within the first half hour, and continues to decrease to less than 20 % after 1.5 h. In contrast, the percentage of rainfall that infiltrates into the preferential flow domain increases from 10 to over 80 % after 2 h. Water in the preferential flow domain quickly reaches the deeper soil layer and forms a perched groundwater table (Fig. 7), where a significant amount of water infiltrates into the matrix (Fig. 5f).

#### 4.4 Slope stability

The local factor of safety is computed based on the computed water pressure distribution (Fig. 7). The distribution of the local factor of safety is shown in Fig. 9 for the initial condition and after 150 h (low-intensity rainfall) and 15 h (high-intensity rainfall) for both the single-permeability model and the dual-permeability model and for the case with different cohesion values for the upper and lower layers. The case with equal cohesion values is not shown because the potential failure areas are very small.

A local factor of safety below 1 indicates a potential failure area. The area with a  $F_{LFS}$  below 1 was determined every time interval (5 h in case 1, and 0.5 h in case 2) and is shown by the black line in Fig. 9. Slope stability is related to both the specific weight of the wet soil and the pore water pressure in the soil. The specific weight changes due to changes in water storage are relatively small, but changes in water pressure have a significant effect on slope stability, especially in the area of the perched water table.

The size of the potential failure area is plotted vs. the cumulative rainfall in Fig. 10 for the two different rainfall events and two sets of cohesion values. The results for the same cohesion values ( $c'_1 = c'_2 = 5 \text{ kPa}$ ) are shown in Fig. 10a. For the low-intensity rainfall, the failure area is very small and is approximately the same for both permeability models. For the high-intensity rainfall, the failure area in the single-permeability model is larger than

for the low-intensity rainfall, but the trend is similar. The failure area in the dual-permeability model is significantly larger. Failure starts after 60 mm rainfall, and the failure area continues to grow during the rainfall infiltration process.

The results for different cohesion values ( $c'_1 = 3 \text{ kPa}$ ,  $c'_2 = 6 \text{ kPa}$ ) are shown in Fig. 10b.

5 For the low-intensity rainfall, the failure area is  $0.7 \text{ m}^2$  in the single-permeability model after 20 mm of cumulative rainfall. The size of this area shows almost no increase until approximately 220 mm of cumulative rainfall, when the groundwater table starts to rise (Fig. 7). The failure area of the dual-permeability model is 40 % smaller than that of the single-permeability model as the preferential flow domain drains more water into the matrix domain. For the high-intensity rainfall, the failure area of the dual-permeability model is larger  
10 than of the single-permeability model, as for the case with equal cohesion values. The failure areas of both models increase fairly quickly to  $2 \text{ m}^2$ , or 5 % of the upper layer in the study area. The failure area increases to  $5 \text{ m}^2$  in the dual-permeability model and to  $3 \text{ m}^2$  in the single-permeability model.

15 The slope stability result are directly related with subsurface hydrological results. For the low-intensity rainfall, the failure area for the single-permeability model is very similar in size and location to the dual-permeability model as the location of the water table is very similar in both models (Fig. 7). The initial condition of the dual-permeability model is slightly more stable than that of the single-permeability model, since the preferential flow domain has a higher drainage capacity and, consequently, a lower pore water pressure. In  
20 the case of low-intensity rainfall, the matrix flow dominates the groundwater recharge and, consequently, the slope instability. Furthermore, the pore water pressure in the preferential flow domain is very low due to its strong drainage capacity. As a result, the failure area calculated by the dual-permeability model under low-intensity rainfall is slightly smaller than  
25 that calculated by the single-permeability model (Fig. 10a). The location of the failure area is similar in the single- and the dual-permeability domain (Fig. 9).

For the high-intensity rainfall, the failure area is significantly larger for the dual-permeability model than for the single-permeability model as the perched water table in the preferential flow domain is much more extensive in the dual-permeability model as

compared to the single-permeability model (Fig. 7). The regular wetting front of the single-permeability model does not reach the interface between soil layers, and the failure area is limited to the toe of the slope. For the dual-permeability model, the high-intensity rainfall results in a rapid infiltration through preferential flow, which quickly reaches the interface between soil layers, and increases the degree of saturation and pressure head of the deeper soil. Positive pore water pressure occurs in the preferential flow domain before the entire slope is fully saturated, and produces a larger failure area than in the equivalent single-permeability model.

## 5 Discussion

The role of preferential flow in hydrology focuses mainly on the rapid vertical infiltration of water and contaminant (Christiansen et al., 2004; Kodešová et al., 2005; Laine-Kaulio et al., 2014), or the rapid discharge in hillslope and catchment hydrological studies on discharge generation (Zhang et al., 2006; Mulungu et al., 2005). Preferential flow can cause rapid water-pressure build-up and may trigger landslides, as suggested by many researchers, but it is rarely quantified. Prior to this study, a detailed evaluation of the influence of preferential flow on slope stability using a coupled dual-permeability and slope stability model has not been carried out. In this study, a physically based numerical model was used to investigate the hydrologic response under predefined conditions. Our starting point was an idealised, but representative, 2D slope with fixed parameters and boundary conditions (except rainfall forcing). A linear-elastic model was used to calculate the stress field to quantify the failure area and timing, but plastic deformation after failure was not considered; the model is not able to quantify landslide displacements. In this section, the underlying approximations of the numerical model are explored and the influence of the chosen parameter sets on the model outcome is discussed. The numerical experimental results are compared with field studies and other published numerical experiments.

## 5.1 Continuum model

Soil heterogeneity is one of the most difficult problems in both hydrology and soil mechanics studies. As an alternative to the continuum approach used here, preferential flow may be simulated by explicitly including fissures, pipes, or fracture networks in discrete (or discontinuous) model. Several field studies (Hencher, 2010; Uchida, 2004; Verachtert et al., 2013) and numerical experiments (Tsutsumi and Fujita, 2008; Chang et al., 2014) have focused on the investigation and simulation of pipe flow (in soil) and fracture flow (in rock). In order to accurately describe the geometry of the preferential flow paths, the high-resolution macropore image reconstruction approach (Hu et al., 2014) or the statistical approach (Köhne et al., 2009) may be applied. Numerical simulations of these natural macropore networks require large amounts of geometry information (Nieber and Sidle, 2010) and computational time and are consequently limited to small-scale studies with a limited number of pipes (Tsutsumi and Fujita, 2008) or cracks (Moonen et al., 2008).

The dual-permeability model is a useful tool to simulate subsurface stormflow and solute transport in a hillslope when the parameterization is able to capture the hydraulic characteristics of each domain (Laine-Kaulio, 2011; Laine-Kaulio et al., 2014). As the dual-permeability model describes the subsurface as a continuum of two linked domains, it is suitable for heterogeneous slopes with a high density of preferential flow paths and not for slopes with only a few large fissures or cracks (van der Spek et al., 2013).

In this paper, flow in both domains is described with the Darcy–Richards' equation, which is valid when the macropores have a relatively small size, and the macropore flow is still viscous (Köhne and Mohanty, 2005; Laine-Kaulio et al., 2014). When fluid velocities are high and flow becomes turbulent, Darcy's equation is not valid (Beven and Germann, 2013) as may be the case in large cracks or fissures under near-saturated or ponded infiltration (Beven and Germann, 1982). The existence of pore necks and dead ends in preferential flow paths reduce the occurrence of turbulent flow (Jarvis, 2007).

## 5.2 Coupling term in the dual-permeability model

In the dual-permeability model, the two domains are in general not at equilibrium. The water-exchange parameterization of the water exchange between the two domains governs whether a dual-permeability model behaves as a dual-permeability model or mimics the behavior of a single-permeability model. The water exchange is governed by the pressure difference between the two domains and two parameters: the water exchange coefficient and the average hydraulic conductivity between the two domains (Eq. 6). The average hydraulic conductivity in turn is a function of the hydraulic conductivities of the two domains, which are a function of the pressure head. The larger the product, the quicker the two domains equilibrate. Specifically, the sensitivity analysis of Ray et al. (1997) shows that a very large water exchange coefficient results in almost instantaneous equilibrium between the two domains. Consequently, the dual-permeability model behaves like a single-permeability model, which means that the preferential flow has no influence on the hydrological and soil mechanics results. This behavior does not agree with experimental studies of natural soils, which often show a non-equilibrium phenomenon between the two domains (Šimůnek et al., 2003; Jarvis, 2007).

The parameterization of the water exchange used in this study was compared with previous studies (see Table 2). Estimation of the water exchange coefficient from physical measurements is very difficult. The most widely used equation is (Gerke and van Genuchten, 1993b):

$$\alpha_w = \frac{\beta}{d^2} \gamma_w \quad (18)$$

where  $\beta$  is a scaling factor,  $d$  is half the representative distance between two macropores, and  $\gamma_w$  is a geometry-dependent shape factor that equals 3 for rectangular slabs and 15 for spheres (Ray et al., 1997). Parameter values for the water exchange term used in several studies are summarized in Table 2. Vogel et al. (2000) and Gerke and Köhne (2004) conceptualize the preferential flow domain as rectangular matrix blocks arranged as parallel slabs. A reduction factor of 0.01 or 0.001 was used to significantly reduce the water exchange be-



tween the two domains, because the hydraulic conductivity at the matrix/fracture interface was conceptualized to be controlled by relatively impermeable coatings that are composed of minerals and organic matter (Ray et al., 2004; Gerke and Köhne, 2002). Köhne and Mohanty (2005) conceptualize the dual domain as a hollow cylindrical matrix that is filled with coarse sand in the middle to mimic the macropore domain. Arora et al. (2011) based their parameters on a high density of macropore columns, and they calculated  $K_a$  by averaging the hydraulic conductivities of the two pore domains (as adopted in this paper; see Eq. 7). Arora et al. (2011) and Köhne and Mohanty (2005) did not consider the influence of coatings on the permeability, nor was this done in this study.

It may be seen from Table 2 that the magnitude of the product  $\alpha_w K_{sa}$  is similar for all studies, even though some of the other values (notably the ratios  $K_{sa}/K_{sm}$  and the values of  $\alpha_w$ ) differ by several orders of magnitude. As such, the water exchange between all these models is likely similar.

### 5.3 Computation of effective stress

In the dual-permeability model, the pore water pressure of the matrix and the preferential flow domains are different and water flows from the domain with a higher pressure to the domain with a lower pressure. Van der Spek et al. (2013) show that in the case of varved clays with a low hydraulic conductivity of the soil matrix and a low density of fissures, the time delay between water entering the fissure network and an increase in pressure in the matrix is relatively large. This study concerns a system with a very high density of macropores and consequently the numerical simulations show only a small time delay for the pressure propagation from the preferential flow domain to the matrix domain. The pore water pressure of the preferential flow domain is used for the effective stress calculation in the slope stability analysis, but failure time and area are only slightly different when the matrix pore water pressure is used for the slope stability analysis. Field evidence (Uchida et al., 2001; Hencher, 2010; Wienhöfer et al., 2011) and numerical experiments (Nieber and Siddle, 2010; Laine-Kaulio et al., 2014) suggest that individual preferential flow networks are

hydraulically connected, and that the high pore water pressure build-up in the preferential flow paths is directly correlated with slope stability.

#### 5.4 Implications of preferential flow for ~~hazard assessment~~slope stability

This study is not the first to address the influence of preferential flow on subsurface flow and slope stability. Preferential flow has an effect on infiltration and drainage fluxes and as such influences the triggering factors for rainfall-induced landslides. Moreover, storage capacity relates to the pore distribution in a soil and controls the antecedent condition or the cause of landslide occurrence (Hamdhan and Schweiger, 2011). The complexity hides in the combination of rainfall characteristics and soil hydraulic properties, together with the physiographic properties like slope, soil thickness, bedrock topography and so on, which determine the resultant pore water pressure response. The model runs and analyses show that rainfall intensity needs to be related to both the soil infiltration rate of the matrix domain and the preferential flow domain. Natural hillslopes show a different response from the matrix as compared to the preferential flow domain depending on the rainfall intensity. ~~Such behavior cannot be simulated with a~~ The dual-permeability model can simulate the preferential flow which will rapidly reach deep soil and increase pore water pressure. However, a single-permeability model ~~with effective soil hydraulic parameters~~ can not reproduce the phenomenon of preferential flow dominated fast pressure response in deep soil.

Parameterization of a dual-permeability model is difficult in practice (Laine-Kaulio et al., 2014). Therefore the use of single-permeability models with effective soil hydraulic parameters prevails in regional hazard assessment (Hamdhan and Schweiger, 2011; Zhou et al., 2014). Rainfall-intensity duration plots for regional hazard assessment are well established and abundantly used but do not include soil and hydrological information (Guzzetti et al., 2007, 2008). They empirically relate precipitation intensity and duration to observed landslides. The inclusion of more detailed hydrometeorological information in these analyses is ongoing. Recently, von Ruette et al. (2014) showed the importance of spatially and temporally heterogeneous rainfall on the initiation of landslides. In a synthetic study they showed

that spatially distributed rainfall resulted in an increase of the number of shallow landslides as compared to uniform or intermittent rainfall (short periods with higher rainfall intensities but spatially homogeneous). They concluded that “low-rainfall intensities (below soil infiltration capacity) and long durations resulted in more infiltration, lower stream discharge, and more saturations and thus failure”. This is in full agreement with the results for low rainfall intensities in this study. Generally speaking, this holds for every case where infiltration capacity of the matrix remains higher than the rainfall intensity even in the presence of preferential flow paths. For low intensity rainfall, the water pressure increase simulated with a single-permeability model is generally larger than with a dual-permeability model as drainage by the preferential flow paths is underestimated. Soil drainage is a typical threshold process of the soil to get rid of its high pore water pressure and in this way stabilizes the slope. Consequently, the stability is slightly underestimated with a single-permeability model for low intensity rainfall.

The reverse is true, however, for high rainfall intensities, when the matrix reaches infiltration capacity early on. In these cases the preferential flow system dominates because water that cannot infiltrate into the matrix domain infiltrates into the preferential flow domain instead, resulting in a large pressure increase with a negative effect on slope stability. A much smaller pressure increase is simulated with a single-permeability model for the same high intensity rainfall. Consequently, the stability is overestimated with a single-permeability model even when equivalent parameters are used.

## 6 Conclusions

A coupled dual-permeability and slope stability model was developed to simulate the influence of preferential flow on subsurface hydrology and consequent slope failure area. The dual-permeability model is able to simulate both preferential flow and matrix flow. The slope failure area was determined with a local factor of safety analysis. Numerical experiments were carried out to study the effect of rainfall events on slope stability with both a single-permeability (no preferential flow) and a dual-permeability model. A 23° slope consisting of

two soil layers was used in the study. The upper layer is sandy loam and the bottom layer is clay. Both the case where the cohesion of the two layers are equal, and the case where the cohesion of the upper layer is smaller than the lower layer were simulated. Two types of rainfall events were considered: low-intensity, long duration rainfall, and high-intensity short duration rainfall. The total amount of water of both rainfall events was equal. The effect of preferential flow on slope stability was studied by comparing the failure area obtained with a single-permeability model and a dual-permeability model for the same rainfall event.

For low intensity rainfall, the failure area of both models is similar when the cohesion of the upper and lower layers is equal, but the failure area is significantly larger in the single-permeability model as compared to the dual-permeability model when the cohesion of the upper layer is lower than the cohesion of the lower layer. During low intensity rainfall, preferential flow has a positive effect on slope stability as it drains water from the matrix domain and decreases the water pressure.

For high intensity rainfall, the failure area of the dual-permeability model is significantly larger than the single-permeability model whether the cohesion values of the two layers are equal or not. During high intensity rainfall, the rainfall intensity is larger than the infiltration capacity of the matrix domain so that most of the rainfall infiltrates into the preferential flow domain. As a result, the water pressure increases very quickly in the preferential flow domain resulting in a much larger failure area than is the case for the single-permeability model.

In summary, two different effects of preferential flow on slope stability were identified with a coupled dual-permeability and soil mechanics model. Preferential flow has a positive effect on slope stability during low intensity rainfall and a negative effect on slope stability during high intensity rainfall. The magnitude of the effect is a function of the soil hydraulic properties and soil mechanical properties of a specific slope. Identification of parameter ranges for which this behavior is significant requires further investigation.

## References

- Abramson, L. W.: Slope Stability and Stabilization Methods, John Wiley and Sons Incorporated, Hoboken, New Jersey, 2002.
- Aleotti, P. and Chowdhury, R.: Landslide hazard assessment: summary review and new perspectives, *B. Eng. Geol. Environ.*, 58, 21–44, doi:10.1007/s100640050066, 1999.
- Allaire, S. E., Roulier, S., and Cessna, A. J.: Quantifying preferential flow in soils: a review of different techniques, *J. Hydrol.*, 378, 179–204, doi:10.1016/j.jhydrol.2009.08.013, 2009.
- Armstrong, A. C., Matthews, A. M., Portwood, A. M., Leeds-Harrison, P. B., and Jarvis, N. J.: CRACK-NP: a pesticide leaching model for cracking clay soils, *Agr. Water Manage.*, 44, 183–199, doi:10.1016/S0378-3774(99)00091-8, 2000.
- Arnone, E., Noto, L. V., Lepore, C., and Bras, R. L.: Physically-based and distributed approach to analyze rainfall-triggered landslides at watershed scale, *Geomorphology*, 133, 121–131, doi:10.1016/j.geomorph.2011.03.019, 2011.
- Arora, B., Mohanty, B. P., and McGuire, J. T.: Inverse estimation of parameters for multidomain flow models in soil columns with different macropore densities, *Water Resour. Res.*, 47, W04512, doi:10.1029/2010WR009451, 2011.
- Baum, R. L., Godt, J. W., and Savage, W. Z.: Estimating the timing and location of shallow rainfall-induced landslides using a model for transient, unsaturated infiltration, *J. Geophys. Res.-Earth*, 115, F03013, doi:10.1029/2009jf001321, 2010.
- Berti, M. and Simoni, A.: Observation and analysis of near-surface pore-pressure measurements in clay-shales slopes, *Hydrol. Process.*, 26, 2187–2205, doi:10.1002/hyp.7981, 2012.
- Beven, K.: Kinematic subsurface stormflow, *Water Resour. Res.*, 17, 1419–1424, doi:10.1029/WR017i005p01419, 1981.
- Beven, K. and Germann, P.: Macropores and water flow in soils, *Water Resour. Res.*, 18, 1311–1325, doi:10.1029/WR018i005p01311, 1982.
- Beven, K. and Germann, P.: Macropores and water flow in soils revisited, *Water Resour. Res.*, 49, 3071–3092, doi:10.1002/wrcr.20156, 2013.
- Bogaard, T.: Analysis of Hydrological Processes in Unstable Clayey Slopes, Ph.D. thesis, Universiteit Utrecht, Utrecht, 2002.
- Bogner, C., Trancón y Widemann, B., and Lange, H.: Characterising flow patterns in soils by feature extraction and multiple consensus clustering, *Ecol. Inform.*, 15, 44–52, doi:10.1016/j.ecoinf.2013.03.001, 2013.

- Borga, M., Dalla Fontana, G., and Cazorzi, F.: Analysis of topographic and climatic control on rainfall-triggered shallow landsliding using a quasi-dynamic wetness index, *J. Hydrol.*, 268, 56–71, doi:10.1016/S0022-1694(02)00118-X, 2002a.
- Borga, M., Dalla Fontana, G., Gregoretti, C., and Marchi, L.: Assessment of shallow landsliding by using a physically based model of hillslope stability, *Hydrol. Process.*, 16, 2833–2851, doi:10.1002/hyp.1074, 2002b.
- Brinkgreve, R., Engin, E., Swolfs, W., Waterman, D., Chesaru, A., Bonnier, P., and Galavi, V.: PLAXIS 2D 2010, Tech. rep., PLAXIS B. V., The Netherlands, 2010.
- Brooks, R. and Corey, A.: Hydraulic Properties of Porous Media, Colorado State University, Colorado, 1964.
- Chang, X., Hu, C., Zhou, W., Ma, G., and Zhang, C.: A combined continuous-discontinuous approach for failure process of quasi-brittle materials, *Sci. China Ser. E*, 57, 550–559, doi:10.1007/s11431-014-5482-8, 2014.
- Christiansen, J. S., Thorsen, M., Clausen, T., Hansen, S., and Christian Refsgaard, J.: Modelling of macropore flow and transport processes at catchment scale, *J. Hydrol.*, 299, 136–158, doi:10.1016/j.jhydrol.2004.04.029, 2004.
- Chui, T. and Freyberg, D.: Implementing hydrologic boundary conditions in a multiphysics model, *J. Hydrol. Eng.*, 14, 1374–1377, doi:10.1061/(ASCE)HE.1943-5584.0000113, 2009.
- Crosta, G. B. and Frattini, P.: Rainfall-induced landslides and debris flows, *Hydrol. Process.*, 22, 473–477, doi:10.1002/hyp.6885, 2008.
- Dai, F. C., Lee, C. F., and Ngai, Y. Y.: Landslide risk assessment and management: an overview, *Eng. Geol.*, 64, 65–87, doi:10.1016/S0013-7952(01)00093-X, 2002.
- Debieche, T. H., Bogaard, T. A., Marc, V., Emblanch, C., Krzeminska, D. M., and Malet, J. P.: Hydrological and hydrochemical processes observed during a large-scale infiltration experiment at the Super-Sauze mudslide (France), *Hydrol. Process.*, 26, 2157–2170, doi:10.1002/hyp.7843, 2012.
- Dusek, J., Gerke, H. H., and Vogel, T.: Surface boundary conditions in two-dimensional dual-permeability modeling of tile drain bromide leaching, *Vadose Zone J.*, 7, 1287–1301, doi:10.2136/vzj2007.0175, 2008.
- Flury, M., Flüher, H., Jury, W. A., and Leuenberger, J.: Susceptibility of soils to preferential flow of water: a field study, *Water Resour. Res.*, 30, 1945–1954, doi:10.1029/94WR00871, 1994.
- Gerke, H. H.: Preferential flow descriptions for structured soils, *J. Plant Nutr. Soil Sci.*, 169, 382–400, doi:10.1002/jpln.200521955, 2006.

- Gerke, H. H. and Köhne, J. M.: Estimating hydraulic properties of soil aggregate skins from sorptivity and water retention, *Soil Sci. Soc. Am. J.*, 66, 26–36, doi:10.2136/sssaj2002.2600, 2002.
- Gerke, H. H. and Köhne, J. M.: Dual-permeability modeling of preferential bromide leaching from a tile-drained glacial till agricultural field, *J. Hydrol.*, 289, 239–257, doi:10.1002/jpln.200521955, 2004.
- Gerke, H. H. and van Genuchten, M.: A dual porosity model for simulating the preferential movement of water and solutes in structured porous media, *Water Resour. Res.*, 29, 305–319, doi:10.1029/92WR02339, 1993a.
- Gerke, H. H. and van Genuchten, M.: Evaluation of a first-order water transfer term for variably saturated dual-porosity flow models, *Water Resour. Res.*, 29, 1225–1238, doi:10.1029/92wr02467, 1993b.
- Godt, J. W., Baum, R. L., Savage, W. Z., Salciarini, D., Schulz, W. H., and Harp, E. L.: Transient deterministic shallow landslide modeling: requirements for susceptibility and hazard assessments in a GIS framework, *Eng. Geol.*, 102, 214–226, doi:10.1016/j.enggeo.2008.03.019, 2008.
- Greco, R.: Preferential flow in macroporous swelling soil with internal catchment: model development and applications, *J. Hydrol.*, 269, 150–168, doi:10.1016/S0022-1694(02)00215-9, 2002.
- Greco, R., Comegna, L., Damiano, E., Guida, A., Olivares, L., and Picarelli, L.: Hydrological modelling of a slope covered with shallow pyroclastic deposits from field monitoring data, *Hydrol. Earth Syst. Sci.*, 17, 4001–4013, doi:10.5194/hess-17-4001-2013, 2013.
- Griffiths, D. and Lane, P.: Slope stability analysis by finite elements, *Geotechnique*, 49, 387–403, doi:10.1680/geot.1999.49.3.387, 1999.
- Griffiths, D. and Lu, N.: Unsaturated slope stability analysis with steady infiltration or evaporation using elasto-plastic finite elements, *Int. J. Numer. Anal. Met.*, 29, 249–267, doi:10.1002/nag.413, 2005.
- Griffiths, D., Huang, J., and Fenton, G. A.: Probabilistic infinite slope analysis, *Comput. Geotech.*, 38, 577–584, doi:10.1016/j.compgeo.2011.03.006, 2011.
- Guzzetti, F., Peruccacci, S., Rossi, M., and Stark, C. P.: Rainfall thresholds for the initiation of landslides in central and southern Europe, *Meteorol. Atmos. Phys.*, 98, 239–267, doi:10.1007/s00703-007-0262-7, 2007.
- Guzzetti, F., Peruccacci, S., Rossi, M., and Stark, C.: The rainfall intensity–duration control of shallow landslides and debris flows: an update, *Landslides*, 5, 3–17, doi:10.1007/s10346-007-0112-1, 2008.

- Gwo, J., Jardine, P., Wilson, G., and Yeh, G.: A multiple-pore-region concept to modeling mass transfer in subsurface media, *J. Hydrol.*, 164, 217–237, doi:10.1016/0022-1694(94)02555-P, 1995.
- Hamdhan, I. N. and Schweiger, H. F.: Slope Stability Analysis of Unsaturated Soil with Fully Coupled Flow-Deformation Analysis, doi:10.5242/iamg.2011.0063 IMAG 2011, SALZBURG, 2011.
- 5 Hammouri, N., Malkawi, A. H., and Yamin, M. A.: Stability analysis of slopes using the finite element method and limiting equilibrium approach, *B. Eng. Geol. Environ.*, 67, 471–478, doi:10.1007/s10064-008-0156-z, 2008.
- Hencher, S. R.: Preferential flow paths through soil and rock and their association with landslides, *Hydrol. Process.*, 24, 1610–1630, doi:10.1002/hyp.7721, 2010.
- 10 Hendrickx, J. M. and Flury, M.: Uniform and Preferential Flow Mechanisms in the Vadose Zone, National Academy Press, Washington, DC, 149–188, 2001.
- Hu, Y., Feng, J., Yang, T., and Wang, C.: A new method to characterize the spatial structure of soil macropore networks in effects of cultivation using computed tomography, *Hydrol. Process.*, 28, 3419–3431, doi:10.1002/hyp.9902, 2014.
- 15 Huang, M. and Jia, C.-Q.: Strength reduction FEM in stability analysis of soil slopes subjected to transient unsaturated seepage, *Comput. Geotech.*, 36, 93–101, doi:10.1016/j.compgeo.2008.03.006, 2009.
- Itasca, F.: Fast Lagrangian Analysis of Continua, Version 4.0 User's Guide, Itasca Consulting Group Inc., Thrasher Square East, Minneapolis, MN, 708 pp., 2002.
- 20 Jarvis, N. J.: A review of non-equilibrium water flow and solute transport in soil macropores: principles, controlling factors and consequences for water quality, *Eur. J. Soil Sci.*, 58, 523–546, doi:10.1111/j.1365-2389.2007.00915.x, 2007.
- Jarvis, N. J., Jansson, P. E., Dik, P. E., and Messing, I.: Modelling water and solute transport in macroporous soil. I. Model description and sensitivity analysis, *J. Soil Sci.*, 42, 59–70, doi:10.1111/j.1365-2389.1991.tb00091.x, 1991.
- 25 Jing, L.: A review of techniques, advances and outstanding issues in numerical modelling for rock mechanics and rock engineering, *Int. J. Rock Mech. Min.*, 40, 283–353, doi:10.1016/S1365-1609(03)00013-3, 2003.
- Köhne, J. M. and Mohanty, B. P.: Water flow processes in a soil column with a cylindrical macropore: experiment and hierarchical modeling, *Water Resour. Res.*, 41, W03010, doi:10.1029/2004wr003303, 2005.
- 30



- Köhne, J. M., Köhne, S., and Gerke, H. H.: Estimating the hydraulic functions of dual-permeability models from bulk soil data, *Water Resour. Res.*, 38, 26-1–26-11, doi:10.1029/2001wr000492, 2002.
- 5 Köhne, J. M., Mohanty, B. P., and Šimůnek, J.: Inverse dual-permeability modeling of preferential water flow in a soil column and implications for field-scale solute transport, *Vadose Zone J.*, 5, 59–76, doi:10.2136/vzj2005.0008 2006.
- Köhne, J. M., Köhne, S., and Šimůnek, J.: A review of model applications for structured soils: a) Water flow and tracer transport, *J. Contam. Hydrol.*, 104, 4–35, doi:10.1016/j.jconhyd.2008.10.002, 2009.
- 10 Kim, J., Salgado, R., and Yu, H.: Limit analysis of soil slopes subjected to pore-water pressures, *J. Geotech. Geoenviron.*, 125, 49–58, doi:10.1061/(ASCE)1090-0241(1999)125:1(49), 1999.
- Kodešová, R., Kozák, J., Šimůnek, J., and Vacek, O.: Single and dual-permeability model of chlorotoluron transport in the soil profile, *Plant Soil Environ.*, 51, 310–315, 2005.
- Krzeminska, D. M., Bogaard, T. A., van Asch, Th. W. J., and van Beek, L. P. H.: A conceptual model of the hydrological influence of fissures on landslide activity, *Hydrol. Earth Syst. Sci.*, 16, 1561–1576, doi:10.5194/hess-16-1561-2012, 2012.
- 15 Laine-Kaulio, H.: Development and Analysis of a Dual-Permeability Model for Subsurface Stormflow and Solute Transport in a Forested Hillslope, Ph.D. thesis, Aalto University, Aalto, 2011.
- Laine-Kaulio, H., Backnäs, S., Karvonen, T., Koivusalo, H., and McDonnell, J. J.: Lateral subsurface stormflow and solute transport in a forested hillslope: a combined measurement and modeling approach, *Water Resour. Res.*, doi:10.1002/2014WR015381, 50, 8159–8178, 2014.
- 20 Lanni, C., McDonnell, J., Hopp, L., and Rigon, R.: Simulated effect of soil depth and bedrock topography on near-surface hydrologic response and slope stability, *Earth Surf. Proc. Land.*, 38, 146–159, doi:10.1002/esp.3267, 2013.
- 25 Larsbo, M. and Jarvis, N.: MACRO 5.0: aModel of Water Flow and Solute Transport in Macroporous Soil: Technical Description, Tech. Rep. 9157665923, Department of Soil Sciences, Swedish University of Agricultural Sciences, Uppsala, Sweden, 2003.
- Leij, F. J.: The UNSODA Unsaturated Soil Hydraulic Database: User's Manual, University of Michigan, 1996.
- 30 Lu, N., Godt, J. W., and Wu, D. T.: A closed-form equation for effective stress in unsaturated soil, *Water Resour. Res.*, 46, W05515, doi:10.1029/2009wr008646, 2010.

- Lu, N., Şener Kaya, B., Wayllace, A., and Godt, J. W.: Analysis of rainfall-induced slope instability using a field of local factor of safety, *Water Resour. Res.*, 48, W09524, doi:10.1029/2012wr011830, 2012.
- McDonnell, J.: The influence of macropores on debris flow initiation, *Q. J. Eng. Geol. Hydrogeol.*, 23, 325–331, 1990.
- Montrasio, L. and Valentino, R.: A model for triggering mechanisms of shallow landslides, *Nat. Hazards Earth Syst. Sci.*, 8, 1149–1159, doi:10.5194/nhess-8-1149-2008, 2008.
- Moonen, P., Carmeliet, J., and Sluys, L.: A continuous–discontinuous approach to simulate fracture processes in quasi-brittle materials, *Philos. Mag.*, 88, 3281–3298, doi:10.1080/14786430802566398, 2008.
- Mukhlisin, M., Taha, M., and Kosugi, K.: Numerical analysis of effective soil porosity and soil thickness effects on slope stability at a hillslope of weathered granitic soil formation, *Geosci. J.*, 12, 401–410, doi:10.1007/s12303-008-0039-0, 2008.
- Mulungu, D. M. M., Ichikawa, Y., and Shiiba, M.: A physically based distributed subsurface-surface flow dynamics model for forested mountainous catchments, *Hydrol. Process.*, 19, 3999–4022, doi:10.1002/hyp.5868, 2005.
- Nemes, A., Schaap, M., Leij, F., and Wösten, J.: Description of the unsaturated soil hydraulic database UNSODA version 2.0, *J. Hydrol.*, 251, 151–162, doi:10.1016/S0022-1694(01)00465-6, 2001.
- Ng, C. W. W. and Shi, Q.: A numerical investigation of the stability of unsaturated soil slopes subjected to transient seepage, *Comput. Geotech.*, 22, 1–28, doi:10.1016/S0266-352X(97)00036-0, 1998.
- Nieber, J. L. and Sidle, R. C.: How do disconnected macropores in sloping soils facilitate preferential flow?, *Hydrol. Process.*, 24, 1582–1594, doi:10.1002/hyp.7633, 2010.
- Pastor, M., Fernández Merodo, J. A., Herreros, M. I., Mira, P., González, E., Haddad, B., Quecedo, M., Tonni, L., and Drempevic, V.: Mathematical, constitutive and numerical modelling of catastrophic landslides and related phenomena, *Rock Mech. Rock Eng.*, 41, 85–132, doi:10.1007/s00603-007-0132-0, 2008.
- Picarelli, L., Urciuoli, G., Mandolini, A., and Ramondini, M.: Softening and instability of natural slopes in highly fissured plastic clay shales, *Nat. Hazards Earth Syst. Sci.*, 6, 529–539, doi:10.5194/nhess-6-529-2006, 2006.
- Pirastu, M. and Niedda, M.: Field monitoring and dual permeability modelling of water flow through unsaturated calcareous rocks, *J. Hydrol.*, 392, 40–53, doi:10.1016/j.jhydrol.2010.07.045, 2010.

- Qiu, C., Esaki, T., Xie, M., Mitani, Y., and Wang, C.: Spatio-temporal estimation of shallow landslide hazard triggered by rainfall using a three-dimensional model, *Environ. Geol.*, 52, 1569–1579, doi:10.1007/s00254-006-0601-x, 2007.
- Ray, C., Ellsworth, T. R., Valocchi, A. J., and Boast, C. W.: An improved dual porosity model for chemical transport in macroporous soils, *J. Hydrol.*, 193, 270–292, doi:10.1016/S0022-1694(96)03141-1, 1997.
- Ray, C., Vogel, T., and Dusek, J.: Modeling depth-variant and domain-specific sorption and biodegradation in dual-permeability media, *J. Contam. Hydrol.*, 70, 63–87, doi:10.1016/j.jconhyd.2003.08.009, 2004.
- Roulier, S. and Jarvis, N.: Analysis of inverse procedures for estimating parameters controlling macropore flow and solute transport in the dual-permeability model MACRO, *Vadose Zone J.*, 2, 349–357, doi:10.2136/vzj2003.3490, 2003.
- Sharma, R. and Nakagawa, H.: Numerical model and flume experiments of single- and two-layered hillslope flow related to slope failure, *Landslides*, 7, 425–432, doi:10.1007/s10346-010-0205-0, 2010.
- Shao, W., Boaggrd, T.A., and Bakker, M.: How to Use COMSOL Multiphysics for Coupled Dual-permeability Hydrological and Slope Stability Modeling, *Procedia Earth and Planetary Science*, 9, 83–90, doi:10.1016/j.proeps.2014.06.018, 2014.
- Shuin, Y., Hotta, N., Suzuki, M., and Ogawa, K.-I.: Estimating the effects of heavy rainfall conditions on shallow landslides using distributed landslide conceptual model, *Phys. Chem. Earth*, 49, 44–51, doi:10.1016/j.pce.2011.06.002, 2012.
- Simoni, S., Zanotti, F., Bertoldi, G., and Rigon, R.: Modelling the probability of occurrence of shallow landslides and channelized debris flows using GEOTop-FS, *Hydrol. Process.*, 22, 532–545, doi:10.1002/hyp.6886, 2008.
- Šimůnek, J., Jarvis, N. J., van Genuchten, M. T., and Gärdenäs, A.: Review and comparison of models for describing non-equilibrium and preferential flow and transport in the vadose zone, *J. Hydrol.*, 272, 14–35, doi:10.1016/S0022-1694(02)00252-4, 2003.
- Šimůnek, J., van Genuchten, M. T., and Šejna, M.: Development and applications of the HYDRUS and STANMOD software packages and related codes, *Vadose Zone J.*, 7, 587–600, doi:10.2136/vzj2007.0077, 2008.
- Stead, D., Eberhardt, E., Coggan, J., and Benko, B.: Advanced numerical techniques in rock slope stability analysis – applications and limitations, *International Conference on Landslides – Causes, Impacts and Countermeasures*, Davos, Switzerland, 615–624, 2001.

Talebi, A., Uijlenhoet, R., and Troch, P. A.: A low-dimensional physically based model of hydrologic control of shallow landsliding on complex hillslopes, *Earth Surf. Proc. Land.*, 33, 1964–1976, doi:10.1002/esp.1648, 2008.

Therrien, R., McLaren, R., and Sudicky, E.: *HydroGeoSphere: a Three-Dimensional Numerical Model Describing Fully-Integrated Subsurface and Surface Flow and Solute Transport*, Tech. rep., edited by: Panday, S. M., Hydrogeologic Inc./University of Waterloo, 2005.

Tsai, T.-L. and Yang, J.-C.: Modeling of rainfall-triggered shallow landslide, *Environ. Geol.*, 50, 525–534, doi:10.1007/s00254-006-0229-x, 2006.

Tsutsumi, D. and Fujita, M.: Relative importance of slope material properties and timing of rainfall for the occurrence of landslides, *Int. J. Erosion Control Eng.*, 1, 79–89, 2008.

Uchida, T., Kosugi, K., and Mizuyama, T.: Effects of pipeflow on hydrological process and its relation to landslide: a review of pipeflow studies in forested headwater catchments, *Hydrol. Process.*, 15, 2151–2174, doi:10.1002/hyp.281, 2001.

Uchida, T.: Clarifying the role of pipe flow on shallow landslide initiation, *Hydrol. Process.*, 18, 375–378, doi:10.1002/hyp.5214, 2004.

Uchida, T., Asano, Y., Mizuyama, T., and McDonnell, J. J.: Role of upslope soil pore pressure on lateral subsurface storm flow dynamics, *Water Resour. Res.*, 40, W12401, doi:10.1029/2003WR002139, 2004.

van der Spek, J. E., Bogaard, T. A., and Bakker, M.: Characterization of groundwater dynamics in landslides in varved clays, *Hydrol. Earth Syst. Sci.*, 17, 2171–2183, doi:10.5194/hess-17-2171-2013, 2013.

Vogel, T., Gerke, H. H., Zhang, R., and Van Genuchten, M. T.: Modeling flow and transport in a two-dimensional dual-permeability system with spatially variable hydraulic properties, *J. Hydrol.*, 238, 78–89, doi:10.1016/S0022-1694(00)00327-9, 2000.

von Ruetten, J., Lehmann, P., and Or, D.: Effects of rainfall spatial variability and intermittency on shallow landslide triggering patterns at a catchment scale, *Water Resour. Res.*, doi:10.1002/2013WR015122, 50, 7780–7799, 2014.

Verachtert, E., Van Den Eeckhaut, M., Poesen, J., and Deckers, J.: Spatial interaction between collapsed pipes and landslides in hilly regions with loess-derived soils, *Earth Surface Processes and Landforms*, 38, 826–835, doi:10.1002/esp.3325, 2013.

Weiler, M.: An infiltration model based on flow variability in macropores: development, sensitivity analysis and applications, *J. Hydrol.*, 310, 294–315, doi:10.1016/j.jhydrol.2005.01.010, 2005.

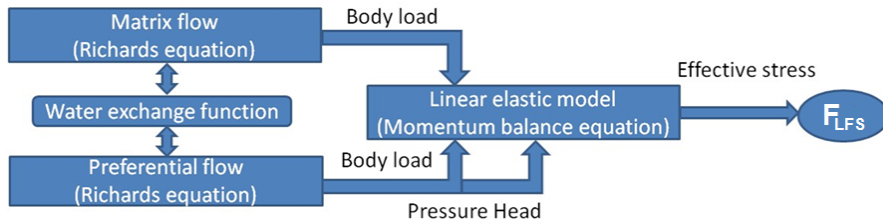
- Westen, C. J., Asch, T. W. J., and Soeters, R.: Landslide hazard and risk zonation – why is it still so difficult?, *B. Eng. Geol. Environ.*, 65, 167–184, doi:10.1007/s10064-005-0023-0, 2006.
- Wilkinson, P. L., Anderson, M. G., and Lloyd, D. M.: An integrated hydrological model for rain-induced landslide prediction, *Earth Surf. Proc. Land.*, 27, 1285–1297, doi:10.1002/esp.409, 2002.
- 5 Wienhöfer, J., Lindenmaier, F., and Zehe, E.: Challenges in Understanding the Hydrologic Controls on the Mobility of Slow-Moving Landslides, *Vadose Zone J.*, 10, 496–511, doi:10.2136/vzj2009.0182, 2011.
- Wu, Y.-S., Liu, H. H., and Bodvarsson, G. S.: A triple-continuum approach for modeling flow and transport processes in fractured rock, *J. Contam. Hydrol.*, 73, 145–179, doi:10.1016/j.jconhyd.2004.01.002, 2004.
- 10 Zehe, E., Maurer, T., Ihringer, J., and Plate, E.: Modeling water flow and mass transport in a loess catchment, *Phys. Chem. Earth Pt. B*, 26, 487–507, doi:10.1016/S1464-1909(01)00041-7, 2001.
- Zhang, G. P., Savenije, H. H. G., Fenicia, F., and Pfister, L.: Modelling subsurface storm flow with the Representative Elementary Watershed (REW) approach: application to the Alzette River Basin, *Hydrol. Earth Syst. Sci.*, 10, 937–955, doi:10.5194/hess-10-937-2006, 2006.
- 15 Zhou, C., Shao, W., and van Westen, C. J.: Comparing two methods to estimate lateral force acting on stabilizing piles for a landslide in the Three Gorges Reservoir, China, *Eng. Geol.*, 173, 41–53, doi:10.1016/j.enggeo.2014.02.004, 2014.

**Table 1.** Summary of parameters.

Symbol	Parameter name	Units	Upper layer (sandy loam)	Lower layer (clay)
$\theta_s$	Saturated water content	(–)	0.412	0.385
$\theta_r$	Residual water content	(–)	0.041	0.09
$K_s$	Saturated hydraulic conductivity	(cm h <sup>–1</sup> )	2.59	0.06
$K_{sf}$	$K_s$ of preferential flow domain	(cm h <sup>–1</sup> )	23.76	0.214
$K_{sm}$	$K_s$ of matrix domain	(cm h <sup>–1</sup> )	0.2376	0.043
$\alpha_w$	Water exchange coefficient	(m <sup>–2</sup> )	0.2	0.2
$\alpha_{BC}$	Brooks–Corey fitting parameter	(cm <sup>–1</sup> )	0.068	0.027
$n_{BC}$	Brooks–Corey fitting parameter	(–)	0.322	0.131
$l_{BC}$	Brooks–Corey fitting parameter	(–)	1	1
$\gamma_{dry}$	Dry unit weight	(kN m <sup>–3</sup> )	15.5	15.5
$E$	Young's modulus	(MPa)	10	10
$\nu$	Poisson's ratio	(–)	0.35	0.35
$\phi'$	Friction angle	(°)	35	35
$c'$	Effective cohesion ( <i>case1</i> )	(kPa)	5	5
$c'$	Effective cohesion ( <i>case2</i> )	(kPa)	3	6

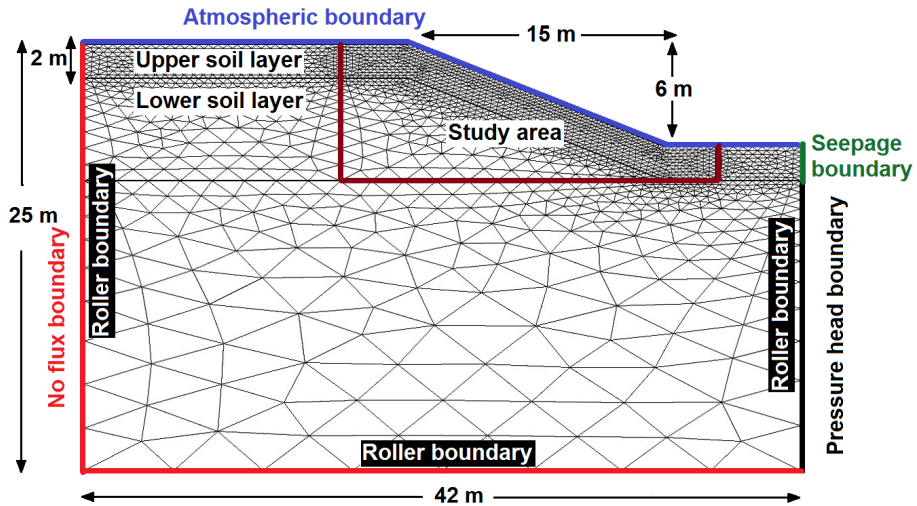
**Table 2.** Parameters setting of water exchange coefficients in different literatures.

Parameter	Vogel et al. (2000) 2-D virtual Numerical study	Gerke and Köhne (2004) Bokhorst clay soil	Köhne and Mohanty (2005) Macropore: coarse sand Matrix: sandy loam	Arora et al. (2011) Multiple-macropore in sandy loam soil	This study
$w_f$	0.05	0.05	0.009675	0.00033	0.1
$K_{st}/K_{sm}$	1000	100	3878	63.6	100
$K_{sa}/K_{sm}$	0.01	0.001	1	32.1	50.5
$K_{sm}$ ( $\text{cm h}^{-1}$ )	0.012	0.1	0.056	0.13	0.238
$d$ (cm)	1	1	11	1.89	–
$\gamma_w$	0.4	0.4	0.4	0.001	–
$\beta$	3	15	1.0685	0.67	–
$\alpha_w$ ( $\text{cm}^{-2}$ )	1.2	6	$2.5 \times 10^{-3}$	$1.8 \times 10^{-4}$	$2.0 \times 10^{-5}$
$\alpha_w K_{sa}$ ( $\text{cm}^{-1} \text{h}^{-1}$ )	$1.4 \times 10^{-4}$	$6.0 \times 10^{-4}$	$2.0 \times 10^{-4}$	$7.8 \times 10^{-4}$	$2.4 \times 10^{-4}$

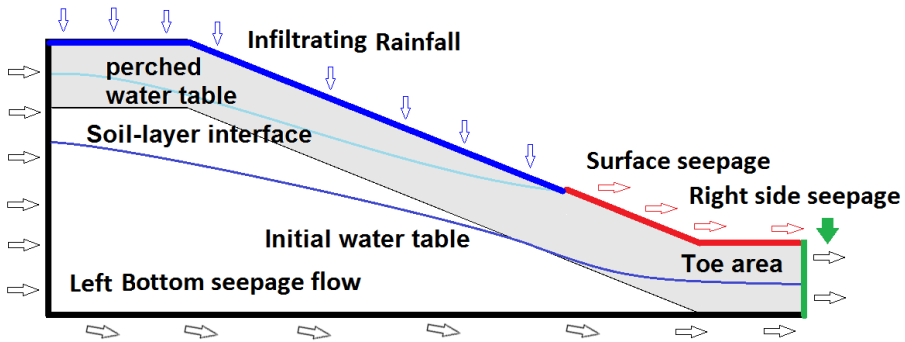


**Figure 1.** Structure of coupled dual-permeability model and soil mechanics model.

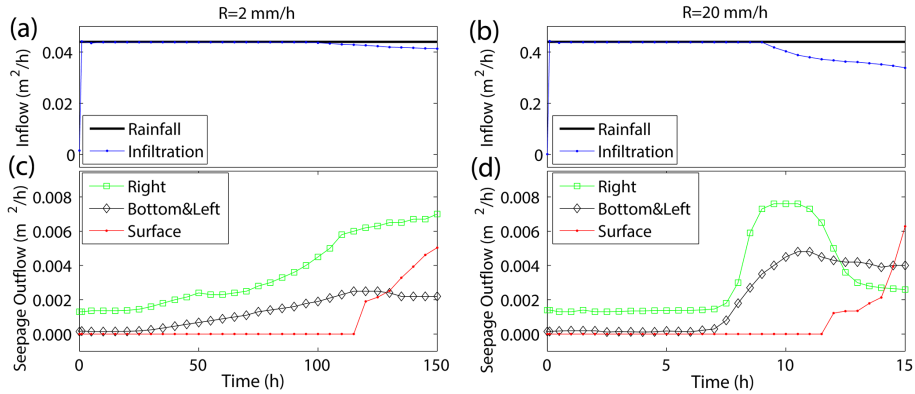




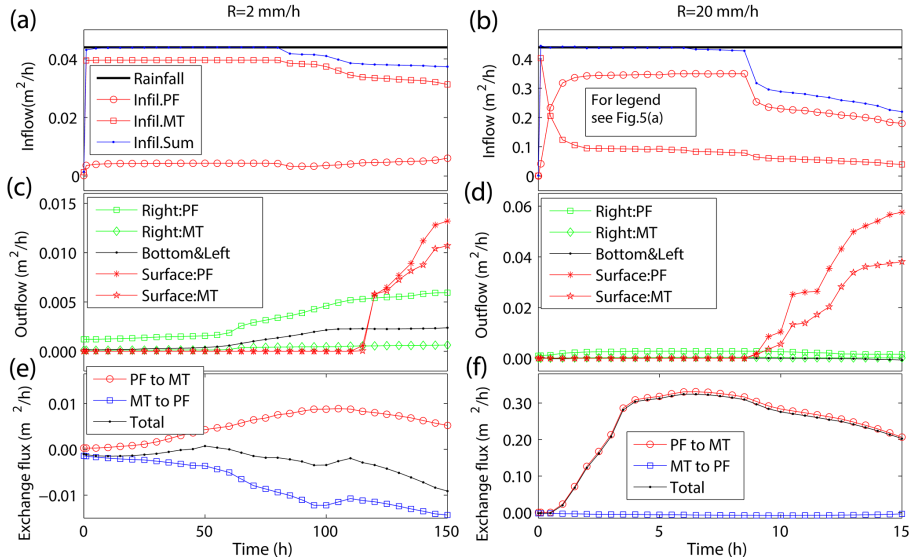
**Figure 2.** Computational mesh and boundary conditions.



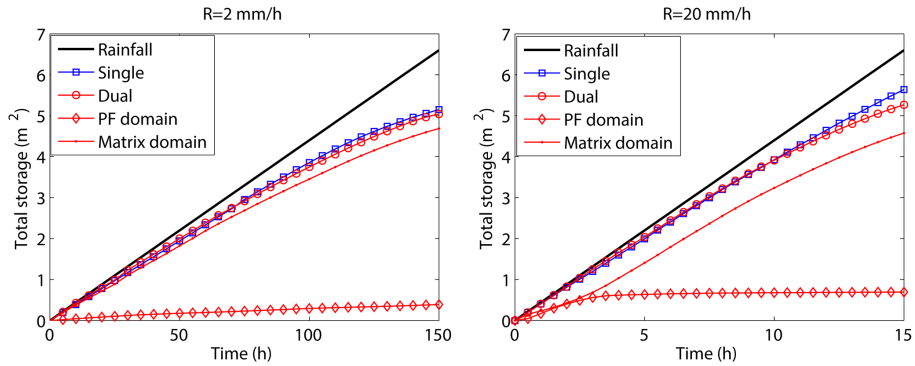
**Figure 3.** Flow component and water balance of study area.



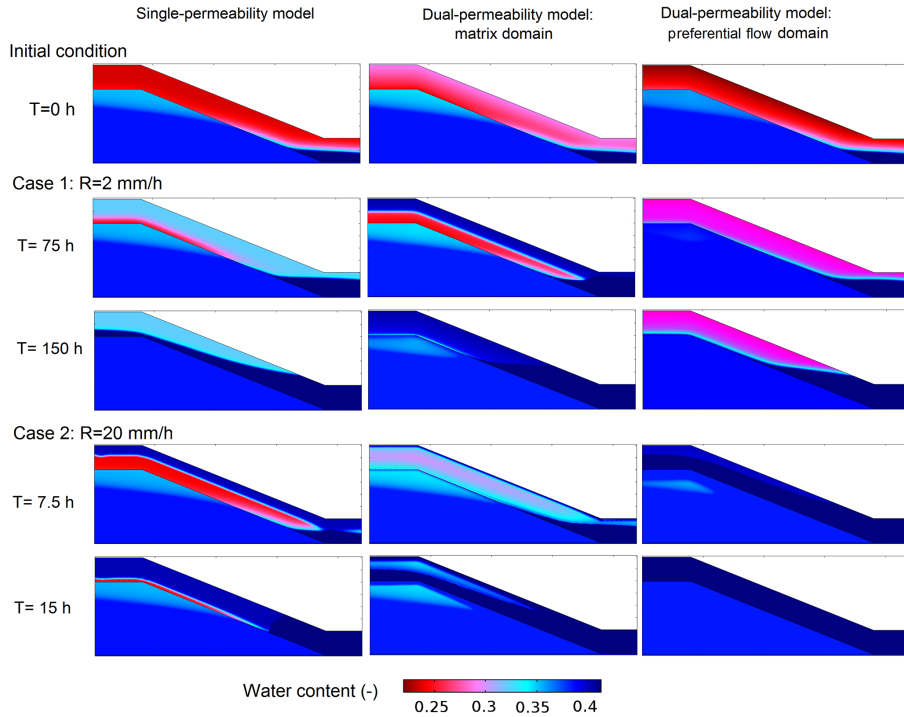
**Figure 4.** Integrated fluxes for single-permeability model and  $2 \text{ mm h}^{-1}$  (left panels) and  $20 \text{ mm h}^{-1}$  (right panels) rainfall. Rainfall and infiltration (a, b), and outflow at the right, outflow at the left and bottom, and outflow at the surface (c, d).



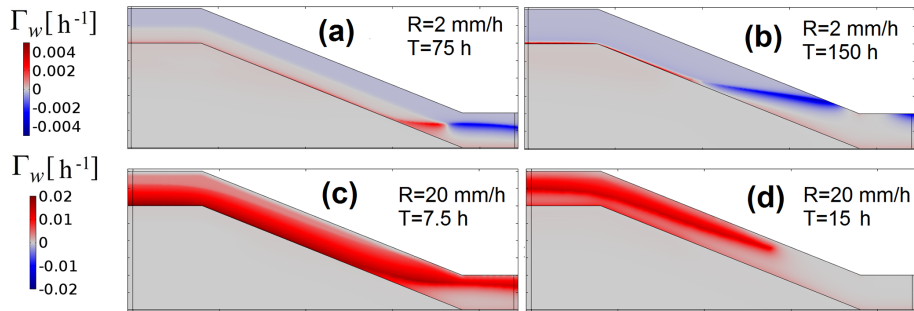
**Figure 5.** Integrated fluxes for dual-permeability model and  $2 \text{ mm h}^{-1}$  (left panels) and  $20 \text{ mm h}^{-1}$  (right panels) rainfall. Rainfall and infiltration (**a**, **b**), and outflow at the right, outflow at the left and bottom, and outflow at the surface (**c**, **d**), exchange between matrix domain (MT) and preferential flow domain (PF) (**e**, **f**) positive for flow from PF to MT and negative for flow from MT to PF.



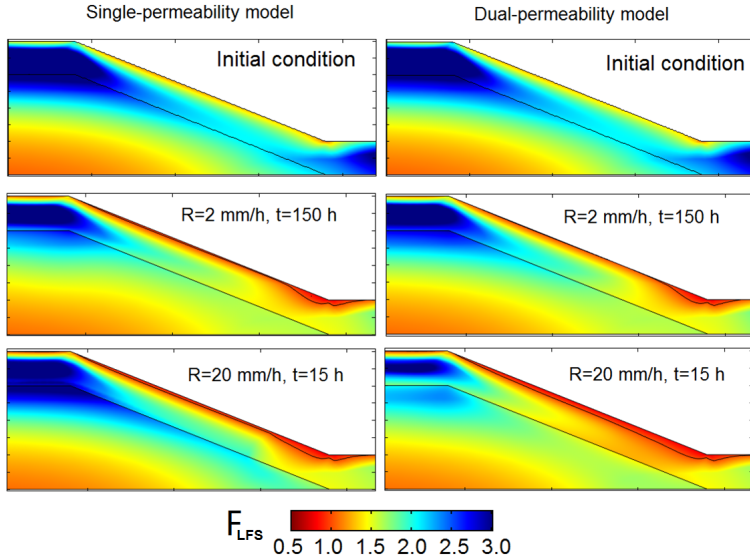
**Figure 6.** Storage increase of single-permeability model and dual-permeability model.



**Figure 7.** Water content distribution.

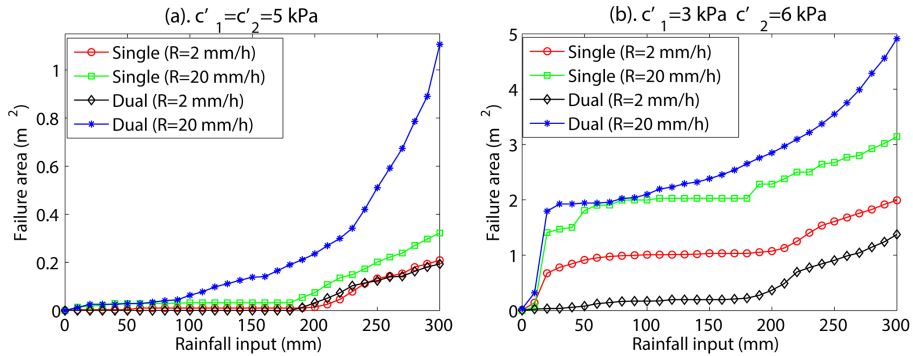


**Figure 8.** Water exchange rate distribution Positive values (red) mean water exchange from preferential flow domain to matrix, negative values (blue) mean water exchange from matrix to preferential flow domain.



**Figure 9.** Final slope stability after the rainfall event ( $c'_1 = 3 \text{ kPa}$ ,  $c'_2 = 6 \text{ kPa}$ ). The black line delineates potential unstable area ( $F_{LFS} < 1$ ).





**Figure 10.** Development of the failure area under different rainfall intensities and soil cohesions.