

**Final Author Comments: Response to Editor**

**Journal:** HESS

**Title:** Assessing Downstream Flood Impacts Due to a Potential GLOF from Imja Tsho in Nepal

**Author(s):** Marcelo A. Somos-Valenzuela, Daene C. McKinney, Alton C. Byers, David R. Rounce, Cesar Portocarrero, Damodar Lamsal

**MS No.:** hess-2014-420

**Editor Initial Decision: Publish subject to minor revisions (Editor review)** (26 Feb 2015) by Matjaz Mikos

Comments to the Author:

**Editor Comment 1:**

Please, integrate your answers to these comments in your revised manuscript, submit it and it that will be checked only by the Editor for possible minor issues left out.

**Response to Editor Comment 1:**

The changes have been intergrated into the manuscript (and tracked so they are clearly visible) and that file has been uploaded as a PDF document to the journal.

Thank you for your consideration.

Daene McKinney

# Assessing Downstream Flood Impacts Due to a Potential GLOF from Imja Tsho in Nepal

Daene McKinney 2/13/2015 8:27 AM

Deleted: Lake

Marcelo A. Somos-Valenzuela<sup>1</sup>, Daene C. McKinney<sup>1</sup>, Alton C. Byers<sup>2</sup>, David R. Rounce<sup>1</sup>, Cesar Portocarrero<sup>3</sup>, Damodar Lamsal<sup>4</sup>

[1] {Center for Research in Water Resources, University of Texas at Austin, Austin, Texas, USA}

[2] {The Mountain Institute, Washington DC, USA}

[3] {Independent Consultant, Huaraz, Peru}

[4] {Graduate School of Environmental Studies, Nagoya University, Japan}

Correspondence to: D. C. McKinney (daene@aol.com)

## ABSTRACT

Glacial-dominated areas pose unique challenges to downstream communities in adapting to recent and continuing global climate change, including increased threats of glacial lake outburst floods (GLOFs) that can increase risk due to flooding of downstream communities and cause substantial impacts on regional social, environmental and economic systems. The Imja glacial lake (or Imja Tsho) in Nepal, with potential to generate a GLOF, was studied using a two-dimensional debris flow inundation model in order to evaluate the effectiveness of proposed measures to reduce possible flooding impacts to downstream communities by lowering the lake level. The results indicate that only minor flood impact reduction is achieved in the downstream community of Dingboche with modest (~3 m) lake lowering. Lowering the lake by 10 m shows a significant reduction in inundated area. However, lowering the lake by 20 m almost eliminates all flood impact at Dingboche. Further downstream at Phakding, the impact of the GLOF is significant and similar reductions in inundation are likely as a result of lake lowering.

## KEYWORDS:

Imja ~~Tsho~~, glacial lake outburst flood, climate change

## 1 INTRODUCTION

Recent worldwide retreat of glaciers (WGMS, 2013) has been very evident in the Mt. Everest region of Nepal where glacial lakes continue to form and grow; significantly increasing the risk of glacier lake outburst floods (GLOFs) (Bajracharya et al., 2007a; ICIMOD, 2011; Ives et al., 2010; Shrestha and Aryal, 2011). Many of these lakes are considered potentially dangerous (Bajracharya et al., 2007a; Bolch et al., 2008; Watanabe et al., 2009; ICIMOD 2011). Therefore, risk and vulnerability assessments of communities and assets located downstream of glacial lakes in this region have become necessary. Remedial actions have been taken to reduce the risk of GLOF, in one case at Tsho Rolpa lake (Rana et al., 2000) and another is under design at ~~Imja Tsho (or Imja Lake)~~ (UNDP 2013). In the region near Imja Tsho (Figure 1), there have been 2 GLOFs in recent decades, Nare (1977) and Dig Tsho (1985), resulting in significant damage to farms, villages, trails and some loss of life (Buchroithner et al., 1982; Ives, 1986; Vuichard and Zimmermann, 1986).

~~Imja Tsho, located in the Khumbu region (27.9° N, 86.9° E, Fig. 1), is a supraglacial lake formed on top of Imja glacier, and it is bounded on the east by the Lhotse-Shar and Imja glaciers, on the north and south by lateral moraines, and to the west by a 700m wide by 700m long ice-cored terminal moraine complex that has an outlet that drains the lake feeding into the Imja Khola (or Imja River).~~ (Watanabe et al., 2009; Somos-Valenzuela et al., 2013). The lake, which did not exist in 1960, has experienced rapid growth in area and volume since then; by 2002 it had a volume of  $35.8 \pm 0.7$  million  $m^3$  (Sakai et al., 2007), and by 2012 the volume had increased to  $61.7 \pm 3.7$  million  $m^3$  (Somos-Valenzuela et al., 2014). The western, down-valley expansion has stabilized in recent years while the eastern expansion continues unabated (Watanabe et al., 2009) mostly through calving from the glacier terminus. Avalanche debris falling from surrounding high mountains and hanging ice is prevented from entering the lake by the high lateral moraines, which are separated from the surrounding mountains by several 10s of meters (Hambrey et al., 2008). The bottom of the lake has continued to lower as the ice of the glacier beneath the lake melts (Watanabe et al., 1995; Fujita et al., 2009; Somos-Valenzuela et al., 2014).

Daene McKinney 2/13/2015 8:28 AM

Deleted: Lake

Daene McKinney 2/13/2015 8:38 AM

Deleted: .

Daene McKinney 2/13/2015 8:40 AM

Deleted: Imja Lake

Daene McKinney 2/14/2015 2:27 PM

Deleted: Rana et al., 2000;

Daene McKinney 2/13/2015 8:40 AM

Deleted: Lake

Daene McKinney 2/13/2015 8:39 AM

Deleted: Lake

Daene McKinney 2/13/2015 8:39 AM

Deleted: river

msomos 2/10/2015 11:00 AM

Deleted: Imja Lake, located in the Khumbu region (27.9° N, 86.9° E, Figure 1), is bounded on the east by the Lhotse-Shar and Imja glaciers, on the north and south by lateral moraines, and to the west by a 700 m wide by 700 m long ice-cored outlet complex (Watanabe et al., 2009; Somos-Valenzuela et al., 2013)

1 The characterization of the risk of Imja Tsho is somewhat controversial, with some  
2 researchers declaring it to be relatively dangerous (Hammond, 1988; Kattelmann, 2003; Ives et  
3 al., 2010), and others concluding that it may be stable (Fujita et al., 2009; Watanabe et al., 2009;  
4 ICIMOD, 2011). ICIMOD (2011) identified Imja Tsho as one of six high-priority glacial lakes in  
5 Nepal that require detailed investigation, while other studies have stated that Imja Tsho is safe  
6 (Fujita et al., 2013) or very low risk (Hambrey et al., 2008). These conflicting classifications are  
7 confusing and can be misleading to the general public and communities downstream, who are the  
8 stakeholders these studies are meant to assist. Imja Tsho is among six glacial lakes identified in  
9 the Nepal National Adaptation Plan of Action (NAPA) as having at the most immediate risk of  
10 bursting (MoE, 2010). The United Nations Development Program (UNDP) is implementing the  
11 “Community Based Flood and Glacial Lake Outburst Risk Reduction Project” in an effort to  
12 reduce the possible risk to downstream communities posed by the lake. According to the UNDP  
13 project strategy (UNDP, 2013), the “GLOF risks arising from Imja Tsho will be significantly  
14 reduced by reducing the lake volume through an artificial controlled drainage system combined  
15 with a community-based early warning system.” They recommend lowering the lake level by at  
16 least 3 meters to achieve this risk reduction.

17 Dingboche is probably the most risk prone area from a potential Imja GLOF. The villages  
18 of Chukkung (~ 4 km) and Dingboche (~ 8 km) are the two nearest settlements from the lake.  
19 The former is located relatively off the Imja Khola (stream), so at less risk, whereas the latter is  
20 the largest settlement along the stream and it has extensive agricultural lands and buildings  
21 within 10-20 m elevation from the stream that will be flooded in the event of a GLOF unless  
22 flood prevention measures are taken. Two villages in the path of a potential GLOF from Imja  
23 Tsho have been the focus of the work reported here: Dingboche (27° 53.563' N, 86° 50.092' E,  
24 4410 m) about 8 km downstream from the lake and Phakding (27° 44.624' N, 86° 42.767' E,  
25 2569 m) about 33 km below Imja Tsho. Dingboche is a village of about 200 residents with an  
26 economy that depends on local agriculture and trekking and climbing tourism. Figure 2 shows  
27 the Imja Khola and the relative height from the river course to the arable land and houses (about  
28 22 m above the river). About 34 km downstream of the lake outlet are low-lying portions of the  
29 village Phakding, which is a village of about 1500 residents with an economy that depends on  
30 local agriculture and trekking tourism. Most of the village is quite high above the river and is  
31 not at risk of damage from a GLOF. However, several farms and lodges are quite close to the

Daene McKinney 2/13/2015 8:39 AM  
Deleted: Lake

Daene McKinney 2/13/2015 8:40 AM  
Deleted: Imja Lake

Daene McKinney 2/13/2015 8:40 AM  
Deleted: Imja Lake

Daene McKinney 2/13/2015 8:40 AM  
Deleted: Imja Lake

Daene McKinney 2/13/2015 8:40 AM  
Deleted: Imja Lake



river. Figure 3 shows the bridge crossing the Dudh Koshi and the relative height from the river course to the Star Lion lodge (about 13 m above the river). Lukla, a gateway to the Everest trekking area, can be excluded from consideration here because of its high location from the current riverbed, so that discussion on the section between the lake and Phakding is appropriate.

In this paper we present a new, two-dimensional debris flow model for predicting the potential GLOF hazard from Imja Tsho in terms of inundation depth in downstream communities and present a measure of uncertainty in the GLOF inundation predictions. We analyze four scenarios: current lake conditions, and three risk mitigation scenarios with the lake water level lowered 3, 10 or 20 m below the current level. Finally, we discuss possible methods for lowering the lake water level to reduce the GLOF hazard. To the authors' knowledge, this is the first attempt to quantify the impact that various flood control alternatives would have on potential GLOF damage in downstream villages.

## 2 METHODOLOGY

### 2.1 Data

To model the propagation of a GLOF from Imja Tsho to the downstream community of Dingboche, we used two Digital Elevation Models (DEMs) for the Imja Tsho GLOF model: (1) a 5 m x 5 m grid cell DEM of the Imja-Lhotse Shar glacier and the moraine surrounding the lake generated from 2006 ALOS imagery (Lamsal et al., 2011); and (2) a DEM extending from the lake to just below Dingboche derived using the method of Lamsal et al. (2011). These DEMs provide adequate resolution and terrain data for flooding and inundation modeling; however, they cover only 11 km of the river basin downstream from the lake. Expanded 5 m x 5 m DEM coverage downstream of Dingboche could be produced, but ALOS imagery was not available for this work. Instead, we used a lower resolution DEM for the region downstream of Dingboche to just below the village of Phakding. Initially a 30 m x 30 m resolution DEM was produced from Advanced Space borne Thermal Emission and Reflection Radiometer (ASTER L1) data (Tachikawa, 2011). However, ASTER L1 data has too many unrealistic features such as many ponds between Imja Tsho and Phakding that don't exist according to our field observations. Therefore, we decided to use the DEM created from 40 m interval contour topographic maps produced by Bajracharya et al. (2007b). The modeled portion of the river has a length of 38.5 km from the lake outlet to a point 5 km downstream of the village of Phakding.

Daene McKinney 2/13/2015 8:40 AM  
Deleted: Imja Lake

Daene McKinney 2/13/2015 8:40 AM  
Deleted: Imja Lake

Daene McKinney 2/13/2015 8:40 AM  
Deleted: Imja Lake

Daene McKinney 2/14/2015 2:34 PM  
Deleted: (Figure 2)

Daene McKinney 2/13/2015 8:40 AM  
Deleted: Imja Lake

Roughness coefficients for eight categories of land cover in the basin were assigned using land cover maps derived from 2006 ASTER imagery for the Sagarmatha National park (Bajracharya and Uddin, 2010). These values agreed well with those that Cenderelli and Wohl (2001) calculated for the Imja Khola (0.15 and 0.30 for the riverbed and floodplain, respectively), and values that the Flo-2D manual (Flo-2D, 2012) recommends for the types of land cover found in the basin.

Somos-Valenzuela et al. (2014) conducted a bathymetric survey of Imja Tsho in 2012 and estimated the lake volume was  $61.7 \pm 3.7$  million  $m^3$  and  $34.1 \pm 1.08$  million  $m^3$  of water could drain from the lake was if the lake surface elevation decreases 35 m from 5010 m to 4975 m (the elevation of the valley floor below the lake). For the Imja Tsho GLOF model, the lake bathymetry was combined with the DEM of the surrounding moraines and the glacier and used as input to the moraine dam breach model described below.

## 2.2 Moraine Dam Breach Model

In order for a GLOF to occur from Imja Tsho, a triggering event is necessary. Such triggers may include slow melting of the ice core within the damming moraine, seepage and piping through the dam and earthquakes (Kattelmann and Watanabe, 1998; Somos-Valenzuela et al., 2013). Other factors that may trigger a GLOF from Imja Tsho include excessive rain and potential blockage of the outlet that may be produced by the ice that it is calved at the glacier terminus.

We observed seepage from the base of the southern portion of the damming moraine during five visits to the lake between 2011 and 2014. In September 2013 the seepage was measured using a tape measure and portable velocity meter (Global Water flow probe FP111 turbo prop positive displacement sensor with a range of 0.1-6.1 m/s and an accuracy of 0.03048 m/s). At the seepage outlet, 2 sets of measurements were taken and an average flow of 0.005  $m^3/s$  was calculated. In addition, 3 sets of flow measurements were made at the Imja Tsho outlet (bridge over the Imja Khola) and an average flow of 2.2  $m^3/s$  was calculated.

To model a potential moraine breach initiating a GLOF from Imja Tsho, we use a combination of moraine breach analysis tools. First, the shape, final size, and failure time of the breach are estimated from empirical equations. Failure time is the time needed for complete development of the breach from the initial breakthrough to the end of lateral enlargement (Froehlich, 2008). Second, these parameters are used in a HEC-RAS dam breach model

Daene McKinney 2/13/2015 8:40 AM  
Deleted: Imja Lake

Daene McKinney 2/13/2015 8:40 AM  
Deleted: Imja Lake

Daene McKinney 2/13/2015 8:40 AM  
Deleted: Imja Lake

Daene McKinney 2/24/2015 1:14 PM  
Deleted: nedded

Daene McKinney 2/13/2015 8:40 AM  
Deleted: Imja Lake

Daene McKinney 2/13/2015 8:48 AM  
Deleted: al

Daene McKinney 2/13/2015 8:48 AM  
Deleted: a

Daene McKinney 2/13/2015 8:48 AM  
Deleted: l

msomos 2/10/2015 11:07 AM  
Deleted: Other factors that may trigger a GLOF from Imja Lake include hydrostatic pressure or seismic effects causing a failure of the moraine dam. Hydrostatic pressure on the moraine may cause intense filtration and piping with potentially catastrophic consequences

Daene McKinney 2/13/2015 8:40 AM  
Deleted: Imja Lake

Daene McKinney 2/13/2015 8:40 AM  
Deleted: Imja Lake

(USACE, 2010) to simulate the breach hydrograph, which is then used as input to a 2-D downstream inundation model.

There are a number of empirical dam breach equations in the literature (Wahl, 2010; Westoby et al., 2014). However, the equations developed by Froehlich (1995) were selected for use here because Wahl (2004) found these equations to have the lowest uncertainty among a large number of equations studied. Froehlich's equations (Froehlich 1995) were used to predict breach width ( $B$ , m), failure time ( $t_f$ , hr) and peak discharge ( $Q_p$ , m<sup>3</sup>/s) are

$$B = 0.1803kV_w^{0.32}h_b^{0.19} \quad (1)$$

$$t_f = 0.00254V_w^{0.53}h_b^{-0.9} \quad (2)$$

$$Q_p = 0.607V_w^{0.295}h_w^{1.24} \quad (3)$$

where the moraine parameters in these equations are the breach height ( $h_b$ , m), the drainable water volume ( $V_w$ , m<sup>3</sup>), the depth of water above the breach invert at the time of failure ( $h_w$ , m), and overtopping multiplier  $k$  ( $k = 1$  for no overtopping, and  $k = 1.4$  for overtopping). The values of these parameters are shown in Table 1. The value of  $V_w$  in Table 1 was taken from the 2012 bathymetric survey results of Somos-Valenzuela et al. (2014). From a large database of dam breach cases, Wahl (2004) derived equations to calculate upper ( $P_u$ ) and lower ( $P_l$ ) bounds for the breach parameters

$$\{P_l, P_u\} = \{P_p \cdot 10^{-e-2Se}, P_p \cdot 10^{-e+2Se}\} \quad (4)$$

where  $P_p$  is the predicted breach parameter value ( $B$ ,  $t_f$ , or  $Q_p$ ) estimated by Equations (1)-(3),  $e$  and  $2Se$  are the mean prediction error and the uncertainty band (Wahl, 2004) (see Table 2).

Froehlich's equations provide estimates of the breaching parameters, but to simulate the downstream inundation, the full hydrograph of the breaching event is needed. To obtain full breach hydrographs (lower, predicted and upper) we use the HEC-RAS dam break model (USACE, 2010) with the breach width ( $B$ ) and failure time ( $t_f$ ) calculated from Equations (1)-(2). These hydrographs were adjusted to match the peak discharge ( $Q_p$ ) values estimated from Equation (3).

### 2.3 Inundation Model

FLO-2D is used to calculate the flooding downstream of Imja Tsho due to a potential GLOF with the breaching hydrograph discussed in the previous section. The model is suitable to simulate the

msomos 2/11/2015 11:21 PM

Deleted: .

Daene McKinney 2/14/2015 1:59 PM

Deleted: , which was measured in 2012

Daene McKinney 2/13/2015 8:40 AM

Deleted: Imja Lake

propagation of the debris flow (Flo-2D, 2012), since the effects of sediments and debris have been shown to be very important factors in GLOF events (Osti and Egashira, 2009). Although the geometry of the grid within Flo-2D is two dimensional, the flow is modeled in eight directions and the model solves the one-dimensional Saint Venant equation independently in each direction. The continuity and momentum equations are solved with a central, finite difference method using an explicit time-stepping scheme. The total friction slope can be expressed as (O'Brien et al., 1993; Julien, 2010; Flo-2D, 2012)

$$S_f = S_y + S_v + S_{td} = \frac{\tau_y}{\gamma_m h} + \frac{K\eta\omega}{8\gamma_m h^2} + \frac{n^2 V^2}{h^{4/3}} \quad (5)$$

where  $S_y$  is the yield slope,  $S_v$  is the viscous slope,  $S_{td}$  is the turbulent-dispersive slope,  $\tau_y$  is the Mohr-Coulomb yield stress,  $\gamma_m$  is the specific weight of the sediment mixture,  $K$  is a resistance parameter,  $\eta$  is the Bingham dynamic viscosity,  $V$  is the depth-averaged velocity,  $n$  is the Manning roughness coefficient. Rheological properties,  $\eta$  and  $\tau_y$ , are formulated as exponential functions of the sediment volume concentration  $c_v$  (Julien and Leon, 2000; Julien, 2010)

$$\eta = \alpha_2 e^{\beta_2 c_v} \quad (6)$$

$$\tau_y = \alpha_1 e^{\beta_1 c_v} \quad (7)$$

where  $\alpha_i$  and  $\beta_i$  are empirical coefficients defined by laboratory experiment (Flo-2D, 2009). Since we have very limited geological information for the study area, the values recommended by the Flo-2D manual for  $\alpha_i$  and  $\beta_i$  are used ( $\alpha_1 = 0.0765$ ,  $\beta_1 = 16.9$ ,  $\alpha_2 = 0.0648$  and  $\beta_2 = 6.2$ ). Rickenmann (1999) and Julien and Leon (2000) recommend using a concentration of 50% as an upper limit for debris flows when no other information is available and this value.

### 3 RESULTS

The Imja GLOF model described above was used to model four scenarios of a GLOF occurring from Imja Tsho: current lake conditions with the water surface at 5010 m, and three flood mitigation scenarios with the lake water level lowered 3, 10 and 20 m, respectively. The flood mitigation scenarios represent possible lake lowering efforts starting with the current UNDP project to lower the lake at least 3 m. In case that scenario does not provide any significant flood reduction downstream at Dingboche, the other scenarios can provide some guidance as to how much farther the lake might need to be lowered to achieve reduced risk. It is important to note that no other studies have analyzed the potential benefits of lowering Imja Tsho and that the

msomos 2/11/2015 3:04 PM

Deleted: ; Julien, 2010; O'Brien et al., 1993

Daene McKinney 2/13/2015 8:40 AM

Deleted: Imja Lake

Daene McKinney 2/13/2015 8:40 AM

Deleted: Imja Lake

selection of a preferred lake lowering alternative needs to be based on such an analysis as that presented here.

### 3.1 Moraine Breaching Model

#### 3.1.1 Breach Parameters

Table 3 shows the results of using Equations (1)-(3) and the moraine characteristics in Table 1 to calculate the lower bound, predicted, and upper bound values of the breaching parameters ( $B$ ,  $t_f$ , and  $Q_p$ ). The upper and lower bounds of the breaching parameters were calculated from Equations (4)-(5) using the prediction errors and uncertainty bands from Table 2. Lowering the lake level by 3 m does not result in a significant change in the failure time and only a 13.8% decrease in the peak discharge. However, lowering the level by 10 m has a major impact on peak discharge, reducing it by 58.5% and further lowering of the level to 20 m reduces the discharge by 73.8%.

#### 3.1.2 Breach Hydrographs

Discharge hydrographs for potential moraine breaches at Imja Tsho were computed using the HEC-RAS dam break module and the lower bound, predicted, and upper bound breach parameters under the current conditions scenario (see Table 4). The HEC-RAS hydrograph peak discharges were matched to the peak discharge values in Table 3 by adjusting the failure time within the range shown in the table. The predicted peak discharge is 8394 m<sup>3</sup>/s (see Table 4 – Imja Tsho) compared to 8274 m<sup>3</sup>/s computed with Froehlich's equation, a difference of 1.4%. The range of peak discharge (upper minus lower bound) is 14728 m<sup>3</sup>/s compared to 14613 m<sup>3</sup>/s computed by Froehlich's equation, about 0.8% difference. These results indicate good agreement between the HEC-RAS computed hydrograph values and the empirical Froehlich equation values.

### 3.2 Inundation Model

The Flo-2D inundation model was used to compute the results of the 4 potential Imja Tsho GLOF scenarios. The first scenario considers the lake in its current condition with the lake level at 5010 m above mean sea level. Then alternatives with lake levels 3, 10, and 20 m lower than this were considered.

Daene McKinney 2/13/2015 8:40 AM  
Deleted: Imja Lake

Daene McKinney 2/13/2015 8:40 AM  
Deleted: Imja Lake

Daene McKinney 2/13/2015 8:40 AM  
Deleted: Imja Lake

### 3.2.1 Current Conditions Scenario

The results (lower bound, expected value, upper bound) of modeling a potential GLOF from Imja Tsho under current conditions are shown in Table 4 and Figures 4-6 at Dingboche (at the cross section indicated in Figure 4). Table 4 also shows the flood arrival time, peak time, peak stage, and flood peak discharge just downstream of Imja Tsho and at Dingboche. Figure 4 shows the expected GLOF discharge hydrograph and bounds at Dingboche. The flood arrives at Dingboche 1 hour after the breaching begins (range 0.6-1.9 hr), peaks at 1.3 hours (range 0.8-2.8 hr) and is over after about 7 hours. Figure 5 shows the flood stage at Dingboche (upper bound, expected value, lower bound). The highest expected flood stage is 22.4 m (range 18.4-26.4 m) and the peak flow is 7544 m<sup>3</sup>/s (range 4208-13248 m<sup>3</sup>/s). Figure 6a shows the expected inundation at Dingboche. The lower and upper bounds are also shown in Figures 6b and c, respectively.

The inundated area at Dingboche was mapped in GIS and shows that, under the expected value simulation, most of the inundation is in the farming terrace areas and not the main lodges and other infrastructure along the primary trekking trail through the village (see Figure 6a). With no lake lowering, about 9.4 ha of farmland will be inundated and 29 structures impacted (see Table 5, 0 m lowering scenario).

Further downstream at Phakding, the flooding also has an impact on potential flooding. At Phakding, the flood arrives 3.1 hours (range 2.4-4.4 hrs) after the breaching begins and peaks at 3.2 hours (range 2.6-4.7 hrs) with a peak discharge of 3412 m<sup>3</sup>/s (range 3171-3473 m<sup>3</sup>/s) (see Figure 7). The lag time between the peak flow at Imja Tsho and the peak at Phakding is 2.2 hours (see Table 4).

### 3.2.2 Lake Lowering Scenarios

A proposal to reduce the risk of a GLOF from Imja Tsho that is currently (2014) under implementation is to lower the water level of the lake at least 3 m (UNDP, 2013). The Imja GLOF model was used to assess the potential flood reduction at Dingboche if such a plan were to be implemented. To this end, the model was run with lake levels 3, 10, and 20 m lower than the current conditions scenario level (5010 m). The results for these scenarios are shown in Table 5 and Figures 8-10. Figures 8 and 9 show the hydrographs and flood stage, respectively, at Dingboche for the 0, 3, 10 and 20 m lake lowering scenarios. Figure 10 maps the inundation

Daene McKinney 2/13/2015 8:40 AM

Deleted: Imja Lake

Daene McKinney 2/14/2015 2:34 PM

Deleted: 2

Daene McKinney 2/14/2015 2:34 PM

Deleted: 4

Daene McKinney 2/13/2015 8:40 AM

Deleted: Imja Lake

Daene McKinney 2/14/2015 2:35 PM

Deleted: 2

Daene McKinney 2/14/2015 2:35 PM

Deleted: 3

Daene McKinney 2/14/2015 2:35 PM

Deleted: 4a

Daene McKinney 2/14/2015 2:35 PM

Deleted: 4b

Daene McKinney 2/14/2015 2:35 PM

Deleted: 4

Daene McKinney 2/14/2015 2:35 PM

Deleted: , top image

Daene McKinney 2/14/2015 2:36 PM

Deleted: 5

Daene McKinney 2/13/2015 8:40 AM

Deleted: Imja Lake

Daene McKinney 2/13/2015 8:40 AM

Deleted: Imja Lake

Daene McKinney 2/14/2015 2:37 PM

Deleted: 6

Daene McKinney 2/14/2015 2:37 PM

Deleted: 8

Daene McKinney 2/14/2015 2:37 PM

Deleted: 6

Daene McKinney 2/14/2015 2:37 PM

Deleted: 7

Daene McKinney 2/14/2015 2:37 PM

Deleted: 8

depth at Dingboche for the different lake lowering scenarios. Lowering the lake 3 m (Figure 10a) results in a 2.7% reduction in the peak flood depth at Dingboche (compared to the 0 m lowering scenario) with the peak flood height lowering 0.6 m (from 22.4 m to 21.8 m). This flood height still leads to significant inundation of homes and farmlands. With the lake lowered by 3 m about 8.6 ha of farmland and 25 structures are impacted by the flooding. In contrast, lowering the lake 10 m (Figure 10b) or 20 m (Figure 10c) results in a 14% and 36% flood height reduction, respectively, at Dingboche, with respective peak flood heights of 19.2 m and 14.4 m. These scenarios lead to considerable reduction in inundated area, especially the 20 m lowering scenario where the flood stays mostly in the historic flood plain of the river, inundates little farmland and floods no structures. When the lake is lowered 10 m about 4 ha of farmland will be inundated and 18 structures impacted and at 20 m lowering about 1 ha of farmland will be inundated and 0 structures impacted. Additionally, the peak discharge is reduced by 6.5%, 40.6% and 73.8% as a result of lowering the lake by 3, 10 or 20 m, respectively (Table 5).

Further downstream at Phakding, the lake lowering scenarios have an impact on potential flooding as well (see Figure 11). Lowering the lake 3 m results in a 13.9% reduction of peak flow at Phakding. In contrast, lowering the lake 10 m results in 49.3% reduction at Phakding, and lowering 20 m results in an 81.6% reduction at Phakding (see Table 5).

## 4 DISCUSSION

### 4.1 Comparison to Previous Imja Tsho GLOF Modeling

HEC-RAS has been used to simulate GLOFs in the Nepal Himalaya by several other researchers. Cenderelli and Wohl (2001) used one-dimensional steady flow HEC-RAS modeling to estimate peak discharges of the 1977 Nare and 1985 Dig Tsho GLOFs. Osti et al. (2009) modeled the 1998 GLOF at Tam Pokhari using HEC-RAS to perform one-dimensional, unsteady-flow calculations; however, the model could not be used to model the debris flow. They note that the GLOF was very strong and damaging, and the peak discharge was much higher than the results of the water-only computations. Other models have been used to model GLOFs. Dwivedi (2007) modeled the 1998 Tam Pokhari GLOF using the SOBEK flood model (Alkema et al., 2004) and a 40 m resolution DEM. Several breaching scenarios were simulated, and eroded sediments were not considered in the model. Shrestha et al. (2013) modeled a potential debris-flow GLOF originating at Tsho Rolpa in the Rolwaling Valley of Nepal including the moraine breaching

Daene McKinney 2/14/2015 2:37 PM  
Deleted: 8a

Daene McKinney 2/14/2015 2:37 PM  
Deleted: 8b

Daene McKinney 2/14/2015 2:37 PM  
Deleted: 8c

Daene McKinney 2/14/2015 2:37 PM  
Deleted: 9

Daene McKinney 2/13/2015 8:40 AM  
Deleted: Imja Lake

process due to an assumed seepage failure. Laboratory experiments were conducted to verify the model and good agreement with model results were obtained. Worni et al. (2012) who used the dynamic, erosion-based dam break model BASEMENT (Faeh et al., 2011) to model a debris-flow GLOF in the Argentinian Patagonia. BASEMENT is a tool for the analysis of breaching processes of non-cohesive earthen dam structures and water-sediment flows (Volz et al., 2010). Schneider et al. (2014) simulated the cascade of mass movement processes of an avalanche triggered GLOF from Lake 513 in the Cordillera Blanca of Peru by coupling different physically-based numerical models. Glacial lake dam overtopping hydrographs and water volumes were used as input for downstream debris flow modeling with RAMMS (Christen et al., 2010).

Bajracharya et al. (2007b) developed a water-flow GLOF model for Imja Tsho that simulated flood flow in the Imja Khola and Dudh Kosi from the lake to about 45 km downstream of the outlet near Phakding. That one-dimensional model used a DEM derived from satellite data (30 m x 30 m grid cells) and one interpolated from 40 m contour maps (5 m x 5 m grid cells). This is the same DEM that we used for the reach from Dingboche to Phakding. The bathymetry of Imja Tsho was taken from a 2002 survey indicating the total volume of the lake was  $35.8 \pm 0.7$  million  $\text{m}^3$  (Sakai et al., 2007), rather than the  $61.7 \pm 3.7$  million  $\text{m}^3$  total volume used in this study based on the more recent 2012 survey (Somos-Valenzuela et al., 2014). The US National Weather Service (NWS) BREACH model (Fread, 1988) was used to generate moraine breach hydrographs that were passed to a NWS FLDWAV model (Fread and Lewis, 1998) and routed downstream. Peak flows at the cross-sections of the FLDWAV model were input to a steady-state US Army Corps of Engineers HEC-RAS model (USACE, 2010) to predict inundation at key cross sections. ICIMOD (2011) extended the work of Bajracharya et al. (2007b) using additional field results to more accurately define the geotechnical parameters of the moraine. The lake bathymetry was updated from 2009 fieldwork with the total volume reported to be 35.5 million  $\text{m}^3$  (ICIMOD, 2011). The moraine-breaching trigger was not specified and might be either overtopping or piping. The simulated breach depth was 30 m, the same as we used here.

We can compare the results of ICIMOD (2011) with those reported here, since this is being asked of the consultants working on the UNDP Imja Tsho risk reduction project (UNDP, 2013). For the breaching process, ICIMOD reported a breaching time of 2.9 hr with a peak discharge of  $5817 \text{ m}^3/\text{s}$ ; whereas, we calculate 1.01 hr (range 0.38 to 7.32 hr) and a peak of 8394

Daene McKinney 2/13/2015 8:40 AM  
Deleted: Imja Lake

Daene McKinney 2/13/2015 8:40 AM  
Deleted: Imja Lake

Daene McKinney 2/13/2015 8:40 AM  
Deleted: Imja Lake



1 m<sup>3</sup>/s (range 4272 to 19000 m<sup>3</sup>/s). At Dingboche, ICIMOD reported a flood arrival of 3.1 hr with a  
2 peak of 3000 m<sup>3</sup>/s (estimated from Fig. 8.2, p. 65); whereas, we show flood arrival at 1 hr (range  
3 0.6-1.9 hr) and a peak of 7544 m<sup>3</sup>/s (range 4208-13248 m<sup>3</sup>/s). At Ghat near Phakding, ICIMOD  
4 reported arrival at 4.2 hr with a peak of 2300 m<sup>3</sup>/s, whereas, we calculate 3.1 hr (range 2.4-4.4  
5 hrs) with a peak of 3412 m<sup>3</sup>/s (range 3171-3473 m<sup>3</sup>/s). The reason for the differences here is  
6 most likely the use of the significantly smaller Imja Tsho volume in the ICIMOD calculations  
7 due to the bathymetry used. This causes faster propagation of larger flows downstream. In  
8 assessing the possibly reduced risk to downstream communities from implementing a lake  
9 lowering alternative, it is recommended that the latest estimates of the volume and bathymetry of  
10 Imja Tsho be used, e.g., 2012 or later.

Daene McKinney 2/13/2015 8:40 AM  
Deleted: Imja Lake

Daene McKinney 2/13/2015 8:40 AM  
Deleted: Imja Lake

## 12 4.2 Options for Imja Tsho Risk Reduction

13 To date there is no agreed upon set of hazard indicators for Imja Tsho, or other potentially  
14 dangerous glacial lakes for that matter (Somos-Valenzuela et al., 2013); however, the definition  
15 of GLOF hazard from Imja Tsho was discussed in consultations with community members in  
16 Dingboche in September 2012 and subsequently. The hazard of an Imja Tsho GLOF didn't exist  
17 30 years ago (see Somos-Valenzuela et al. (2014) and Watanabe et al. (2009) for images  
18 showing the evolution of the lake), and the community members' vulnerabilities stem from the  
19 location of their homes and farms relative to the flood plain. For them, hazard is having their  
20 farms or homes flooded or washed away, a prospect that they want reduced and preferably  
21 eliminated (Somos-Valenzuela et al., 2013).

Daene McKinney 2/13/2015 8:40 AM  
Deleted: Imja Lake

Daene McKinney 2/13/2015 8:40 AM  
Deleted: Imja Lake

Daene McKinney 2/13/2015 8:40 AM  
Deleted: Imja Lake

Daene McKinney 2/13/2015 9:20 AM  
Deleted: The hazard of an Imja Lake GLOF didn't exist 30 years ago

22 There are many impacts that might occur from a rapid uncontrolled GLOF from Imja Tsho that  
23 will be felt downstream, in particular there are several stretches of the main trekking trail from  
24 Namche Bazar to Lukla that run quite close to the river and would be washed away, as they were  
25 in the 1985 Dig Tsho GLOF (Ives, 1986; Vuichard and Zimmermann, 1986). In addition, some  
26 parts of villages along the trail have fields and houses near the river, and they may also be  
27 impacted. The feasibility of possible remedial actions at Imja Tsho to reduce the hazard to  
28 downstream communities was evaluated. One scenario that appears to have significant risk  
29 reduction possibility is the slow, controlled lowering of the lake by 20 m. Lowering the lake by  
30 any amount will reduce the probability of GLOF occurrence for at least two reasons, the

Daene McKinney 2/13/2015 8:40 AM  
Deleted: Imja Lake

Daene McKinney 2/12/2015 3:26 PM  
Deleted: lowering the lake 20 m. Of course, there are other impacts of a GLOF from Imja Lake that will be felt downstream, in particular there are several stretches of the main trekking trail from Namche Bazar to Lukla that run quite close to the river and would be washed away, as they were in the 1985 Dig Tsho GLOF (Ives, 1986; Vuichard and Zimmermann, 1986). In addition some parts of villages along the trail have fields and houses near the river, and they may also be impacted. However, providing reduced flooding at Dingboche should also provide protection to many of the downstream areas as well.

1 hydrostatic pressure on the west to east width of the moraine at the water level would be  
2 increased and more difficult to breach. Consequently, reducing the GLOF's occurrence  
3 probability would decrease the hazard level downstream.

4 Of the methods to reduce glacial lake risk, e.g., relocation of people and assets from the  
5 flood path, strengthening the lake outlet (Kattelman and Watanabe, 1998), the one that has been  
6 employed the most is lowering the lake level. This has been used at nearly 40 dangerous glacial  
7 lakes in Peru since the 1950s (Portocarrero, 2014). Typically, the lake is lowered to a safe level  
8 by siphoning or draining and then excavating the damming moraine and installing a drainage  
9 channel at the desired elevation. Often, a reinforced earthen dam is then constructed to replace  
10 the original unconsolidated moraine dam, such that if a surge wave overtops the dam it will  
11 contain much of the excess water and not fail from erosion (Somos-Valenzuela et al., 2013). In  
12 order to lower glacial lakes, siphons are often used, e.g., at Hualcán Lake (Lake 513) in Peru  
13 (Portocarrero, 2014). Lowering glacial lakes more than about 5 m is infeasible at altitudes of  
14 5000 m, but greater lowering can be achieved using an incremental method as discussed below  
15 (Somos-Valenzuela et al., 2013).

16 The UNDP Imja Tsho project suggests that lowering the lake “at least” 3 m will achieve  
17 significant risk reduction downstream (UNDP 2013), but there is no requirement to estimate the  
18 remaining risk when the lake is lowered to different levels (3 m, 10 m, 20 m). This work has  
19 attempted analyze this question. Siphons may be used at Imja Tsho to progressively lower the  
20 level in 3-5 m increments followed by excavation of the lake outlet.

21 Previous studies have suggested deepening and strengthening the outlet of Imja Tsho  
22 (Maskey, 2012). However, there are many difficulties in implementing this method. First, the  
23 natural flow of the outlet must be interrupted somehow in order to perform any excavation of the  
24 channel. In the siphoning method discussed above, the lake is lowered and then the outlet can be  
25 excavated to that level without needing to divert the outlet flow. One method that has been  
26 proposed is to build a coffer dam and divert water to flow over another part of the damming  
27 moraine and then excavate the existing outlet channel of the lake to increase its depth and  
28 discharge (Maskey, 2012). The difficulties of employing this method include: (1) possibly  
29 encountering ice during the excavation, significantly weakening the moraine and possibly  
30 inducing a GLOF; (2) diversion of the outlet flow might cause excessive erosion that could  
31 weaken the moraine and potentially lead to a GLOF; and (3) the existence of small ponds in the

Daene McKinney 2/12/2015 3:37 PM

Deleted: reduced

Daene McKinney 2/12/2015 3:37 PM

Deleted: and the top of the moraine would be wider

Daene McKinney 2/13/2015 8:40 AM

Deleted: Imja Lake

Daene McKinney 2/13/2015 8:40 AM

Deleted: Imja Lake

Daene McKinney 2/13/2015 8:40 AM

Deleted: Imja Lake

1 outlet complex that are separated with shallow necks (with as little as 1.5 m depth) through  
2 which the lake water flows might prevent the draining of the lake unless they were also  
3 excavated (Somos-Valenzuela et al., 2013). The difficulty of encountering buried ice exists in  
4 any method employing excavation of the damming moraine and the moraine must be examined  
5 in detail with geophysical methods before this can be done safely. The example of Tsho Rolpa is  
6 being used as a model lake lowering system for [Imja Tsho](#) (UNDP, 2013). An outlet channel was  
7 constructed at Tsho Rolpa and 3 m lowering was achieved; however, the design called for  
8 lowering the lake by 20 m which was never attempted because of funding limitations (Rana et  
9 al., 2000; Mool et al., 2001). Our results show that lowering [Imja Tsho](#) 3 m would not lead to a  
10 significant inundation reduction downstream. The lake should be lowered at least 10 m and  
11 probably 20 m to achieve significant hazard reduction. Lowering [Imja Tsho](#) will require  
12 draining: (1) the normal inflow to the lake; (2) the volume of the lake expansion during the time  
13 of drainage; and (3) the volume of the lake necessary to achieve 3 m lowering per drainage cycle  
14 (Somos-Valenzuela et al., 2013). Lake discharge was measured in May 2012 by a group from  
15 Kathmandu University using a tracer dilution method (Maskey, 2012) and by the authors using a  
16 timed float method (Somos-Valenzuela et al., 2013). In both cases the flow was found to be  
17 approximately 1 m<sup>3</sup>/s.

18 The authors again measured the flow with a flow meter in September 2013 and found the  
19 discharge to be approximately 2 m<sup>3</sup>/s (see above for description of method). The lake area was  
20 1.257±0.104 km<sup>2</sup> in September 2012, and increasing by about 0.04 km<sup>2</sup>/yr. (Somos-Valenzuela  
21 et al. 2014). This will require 1.353 m<sup>3</sup>/s of drainage to lower the lake 3 m during a 5-month  
22 period in the melt season using 13 siphon pipes of 350 mm diameter.

23

## 24 5 CONCLUSIONS

25 Methods for reducing the downstream inundation hazard from a GLOF originating at [Imja Tsho](#)  
26 in Nepal were explored. A 2-dimensional debris flow model was developed to assess the  
27 downstream inundation. Inundation reducing scenarios were analyzed and an alternative under  
28 design, lowering the lake at least 3 m, was found not to have significant flood reduction benefits.  
29 The results indicate that the lake needs to be lowered about 20 meters in order to completely  
30 reduce the impacts that a GLOF could have at Dingboche and further downstream. The results  
31 show that a GLOF occurring under the current lake conditions would result in inundation of

Daene McKinney 2/13/2015 8:40 AM  
Deleted: Imja Lake

Daene McKinney 2/13/2015 8:40 AM  
Deleted: Imja Lake

Daene McKinney 2/13/2015 8:40 AM  
Deleted: Imja Lake

Daene McKinney 2/13/2015 8:40 AM  
Deleted: Imja Lake

much of the farming areas (about 9.4 ha and 29 structures impacted) at Dingboche but not the main lodges and other infrastructure along the primary trekking trail through the village. Lowering lake 3 m does not change this result much, but 10 m lowering reduces the impact substantially with about 4 ha of farmland and 18 structures impacted, and at 20 m lowering almost all impact at Dingboche is prevented. All cases involving lowering the lake would require a coordinated sequence of siphoning to lower the water level in 3 m increments, followed by outlet excavation to maintain the new level. The process would be repeated as needed to reach the desired lake level.

## ACKNOWLEDGEMENTS

The authors acknowledge the support of the USAID Climate Change Resilient Development (CCRD) project and the Fulbright Foundation for the support of Somos-Valenzuela. The support of the software developers of FLO-2D made much of the work reported here possible. [The comments of T. Watanabe, S. Bajracharya and an anonymous reviewer are greatly appreciated.](#)

## REFERENCES

- [Alkema, D., and Middelkoop, H.: The Influence of Floodplain Compartmentalization on Flood Risk within the Rhine-Meuse Delta. \*Natural Hazards\* 36: 125-145, 2005.](#)
- Bajracharya B., Shrestha, A. B., and Rajbhandari, L.: Glacial lake outburst floods in the Sagarmatha regions: hazard assessment using GIS and hydrological modeling. *Mountain Research and Development* 27: 336–344, 2007**b**.
- Bajracharya, B., Uddin, K.: Study of Land Cover Dynamics in Sagarmatha National Park and Buffer Zone. 10th Int. Symp. High Mt. Remote Sens. Cartogr. (Kathmandu, Nepal, 12 – 19 September 2008) pp 125–132, 2010.
- Bajracharya, S. R., Mool, P. K., and Shrestha, B. R.: Impact of Climate Change on Himalayan Glaciers and Glacial Lakes Case Studies on GLOF and Associated Hazards in Nepal and Bhutan, International Centre for Integrated Mountain Development (ICIMOD), Kathmandu, 2007a.

1 Bolch T., Buchroithner, M. F., Peters, J., Baessler, M. and Bajracharya, S. R.: Identification of  
2 glacier motion and potentially dangerous glacier lakes at Mt. Everest area/Nepal using  
3 spaceborne imagery. *Natural Hazards and Earth System Sciences* 8: 1329-1340, 2008.

4 Buchroithner, M. F., Jentsch, G. and Wanivenhaus, B.: Monitoring of recent geological events in  
5 the Khumbu Area (Himalaya, Nepal) by Digital Processing of Landsat MSS Data. *Rock*  
6 *Mechanics* 15, 181–197, 1982.

7 Cenderelli D. A. and Wohl, E. E.: Peak discharge estimates of glacial-lake outburst floods and  
8 “normal” climatic floods in the Mount Everest region. *Geomorphology* 40: 57–90, 2001.

9 Christen, M., Kowalski, J., and Bartelt, P.: RAMMS: numerical simulation of dense snow  
10 avalanches in three-dimensional terrain. *Cold Regions Science and Technology* 63, 1–14,  
11 2010.

12 Dwivedi, S. K.: Two Dimensional Simulation of a Glacial Lake Outburst Flood (A Case Study of  
13 Tam Pokhari Lake; Nepal Himalaya). M.S. Thesis, International Institute for Geo-  
14 information Science and Earth Observation. Enschede, The Netherlands. February, 2007.

15 Faeh, R., Mueller, R., Rousselot, P., Veprek, R., Vetsch, D., Volz, C., Vonwiller, L., Farshi, D.:  
16 BASEMENT – Basic Simulation Environment for Computation of Environmental Flow and  
17 Natural Hazard Simulation. VAW, ETH Zurich. <<http://www.basement.ethz.ch>> (Last  
18 accessed 13 February 2015). 2011..

19 Flo-2D: Flo-2D User’s Manual, FLO-2D Software, Inc., Nutrioso, AZ, 2009.

20 Froehlich, D. C.: Embankment dam breach parameters revisited. *Proc., 1st Int. Conf. on Water*  
21 *Resources Engineering*, American Society of Civil Engineers, August 14-18, 1995, New  
22 York, 887–891, 1995.

23 Froehlich, D. C.: Embankment dam breaches and their uncertainties. *Journal of Water Resources*  
24 *Planning and Management*, 121(1), 90–97, 2008.

25 Fread, D. L.: BREACH, an Erosion Model for Earthen Dam Failures, United States National  
26 Weather Service, Hydrologic Research Laboratory, Silver Spring, Maryland, 58 pp., 1988.

- 1 Fread, D. L. and Lewis, J. M.: NWS FLDWAV Model, Theoretical Development, User  
2 Document. Silver Spring, MD, 1998.
- 3 Fujita K., Sakai, A., Nuimura, T., Yamaguchi, S. and Sharma, R.R.: Recent changes in Imja  
4 Glacial Lake and its damming moraine in the Nepal Himalaya revealed by in-situ surveys  
5 and multi-temporal ASTER imagery. Environmental Research Letters 4, 045205, 2009,  
6 doi:10.1088/1748-9326/4/4/045205.
- 7 Fujita, K., Sakai, A., Takenaka, S., Nuimura, T., Surazakov, A. B., Sawagaki, T. and  
8 Yamanokuchi, T.: Potential flood volume of Himalayan glacial lakes. Natural Hazards and  
9 Earth System Sciences, 13(7), 1827-1839. doi:10.5194/nhess-13-1827-2013, 2013.
- 10 Grabs, W. E. and Hanisch, J.: Objectives and Prevention Methods for Glacier Lake Outburst  
11 Floods (GLOFs), Snow and Glacier Hydrology, Proc. Of the Kathmandu Symposium,  
12 November, Kathmandu, Nepal. IAHS Publ. no. 218, 1993.
- 13 Hambrey M. J., Quincey, D. J., Glasser, N. F., Reynolds, J. M., Richardson, S. J. and Clemmens,  
14 S.: Sedimentological, geomorphological and dynamic context of debris-mantled glaciers,  
15 Mountain Everest (Sagarmatha) region, Nepal. Quaternary Science Reviews 27: 2361–2389,  
16 2008.
- 17 Hammond J. E.: Glacial lakes in the Khumbu region, Nepal: An assessment of the hazards.  
18 Unpublished M.A. Thesis, University of Colorado, Boulder, CO, 1988.
- 19 ICIMOD-International Centre for Integrated Mountain Development: Glacial lakes and glacial  
20 lake outburst floods in Nepal, International Centre for Integrated Mountain Development  
21 (ICIMOD), Kathmandu, Nepal, 2011.
- 22 Ives, J.: Glacial Lake Outburst Floods and Risk Engineering in the Himalaya, International  
23 Centre for Integrated Mountain Development (ICIMOD) Occasional Paper No. 5,  
24 Kathmandu, Nepal, 1986.
- 25 Ives, J. D., Shrestha, R. B., and Mool, P. K.: Formation of glacial lakes in the Hindu Kush-  
26 Himalayas and GLOF risk assessment. International Centre for Integrated Mountain  
27 Development (ICIMOD), Kathmandu, Nepal, 2010.
- 28 Julien, P. Y.: Erosion and Sedimentation, second edition, Cambridge University Press,  
29 Cambridge, UK, 2010.

Daene McKinney 2/24/2015 1:19 PM

Deleted:

1 Julien, P. Y., and Leon, C. A.: Mud floods, mudflows and debris flows classification, rheology  
2 and structural design, Int. Work. Mudflows debris flows, p. 1-16, Caracas, Venezuela,  
3 November 27- December 1, 2000.

4 Kattelmann, R. and Watanabe, T.: Approaches to Reducing the Hazard of an Outburst Flood of  
5 Imja glacier Lake, Khumbu Himal. Proc. of International Conference on Ecohydrology of  
6 High Mountain Areas, Kathmandu, Nepal 24-28 March 1996, pp. 359-366. UNESCO, 1998.

7 Kattelmann, R.: Glacial Lake Outburst Floods in the Nepal Himalaya: A Manageable Hazard?  
8 Nat Hazards 28:145–154, 2003.

9 Lamsal, D., Sawagaki, T. and Watanabe, T.: Digital Terrain Modelling Using Corona and ALOS  
10 PRISM Data to Investigate the Distal Part of Imja glacier, Khumbu Himal, Nepal. J. Mt. Sci.  
11 8: 390-402, 2011.

12 Maskey R. K.: Topographic Survey and Engineering Design of the Outlet Channel and Pre-  
13 feasibility Study for a Mini-Hydropower Generation Facility from Imja Lake. USAID  
14 ADAPT Asia-Pacific Support to UNDP/Nepal: Community Based GLOF and Flood Risk  
15 Reduction Project, United States Agency for International Development, Bangkok, 2012.

16 MoE-Ministry of the Environment: National Adaptation Programme of Action to Climate  
17 Change, Kathmandu, Nepal, 2010.

18 Mool, P. K., Bajracharya, S. R. and Joshi, S. P.: Risk Assessment of Lake Rolpa Glacial Lake  
19 along the Rolwaling and Tama Kosi Valleys Dolakha District, Nepal, International Centre for  
20 Integrated Mountain Development (ICIMOD), Kathmandu, Nepal, 2001.

21 O'Brien, J. S, Julien, P.Y. and Fullerton, W. T.: Two-Dimensional water Flood and mudflow  
22 simulation. J Hydraul Eng 119:244–261, 1993.

23 Osti, R., and Egashira, S.: Hydrodynamic characteristics of the Tam Pokhari Glacial Lake  
24 outburst flood in the Mt . Everest region, Nepal. Hydrol. Process. 23, 2943–2955, doi:  
25 10.1002/hyp.7405, 2009.

26 Portocarrero, C.: The Glacial Lake Handbook: Reducing Risk from Dangerous Glacial Lakes in  
27 the Cordillera Blanca, Peru, United States Agency for International Development,  
28 Washington, DC, 2014.

1 Rana, B., Shrestha, A. B., Reynolds, J. M., Aryal, R., Pokhrel, A. P. and Budhathoki, K. P.:  
2 Hazard Assessment of the Lake Rolpa Glacier Lake and Ongoing Remediation Measures, J.  
3 of Nepal Geological Society 22: 563-570, 2000.

4 Reynolds, J. M., Dolecki, A. and Portocarrero, C.: The construction of a drainage tunnel as part  
5 of glacial lake hazard mitigation at Hualcán, Cordillera Blanca, Peru. Geological Society,  
6 Engineering Geology Special Publications 1998; v. 15; p. 41-48, London, 1998.

7 Rickenmann, D.: Empirical Relationships for Debris Flows. Nat Hazards 19:47–77, 1999.

8 Sakai, A., Saito, M., Nishimura, K., Yamada, T., Iizuka, Y., Harada, K., Kobayashi, S., Fujita, K.  
9 and Gurung, C. B.: Topographical survey of end-moraine and dead ice area at the Imja  
10 Glacial Lake in 2001 and 2002. Bulletin of Glaciological Research, 24, 29-36, 2007.

11 [Schneider, D., Huggel, C., Cochachin, A., Guillén, S., and García, J. Mapping hazards from](#)  
12 [glacier lake outburst floods based on modelling of process cascades at Lake 513, Carhuaz,](#)  
13 [Peru. Adv. Geosci., 35, 145–155, doi:10.5194/adgeo-35-145-2014, 2014](#)

14 Shrestha, A. B. and Aryal, R.: Climate change in Nepal and its impact on Himalayan glaciers,  
15 Reg Environ Change 11 (Suppl 1):S65–S77, 2011.

16 [Shrestha, B. B., Nakagawa, H., Kawaike, K., Baba, Y. and Zhang, H.: Glacial hazards in the](#)  
17 [Rolwaling valley of Nepal and numerical approach to predict potential outburst flood from](#)  
18 [glacial lake. Landslides 10:299–313 DOI 10.1007/s10346-012-0327-7. 2013.](#)

19 Somos-Valenzuela, M., McKinney, D. C., Byers, A. C., Rounce, D. R., Portocarrero, C.:  
20 Modeling Mitigation Strategies for Risk Reduction at Imja Lake, Nepal, High Mountain  
21 Glacial Watershed Program, CRWR Online Report 13-06, Center for Research in Water  
22 Resources, University of Texas at Austin, 2013

23 Somos-Valenzuela, M., McKinney, D. C., Rounce, D. R., and Byers, A. C.: Changes in Imja  
24 Tsho in the Mt. Everest Region of Nepal, The Cryosphere, 8, 1661-1671, 2014,  
25 doi:10.5194/tc-8-1661-2014, 2014

26 UNDP-United Nations Development Programme: Community Based Glacier Lake Outburst and  
27 Flood Risk Reduction in Nepal. Project Document, UNDP Environmental Finance Services,  
28 Kathmandu, Nepal, 2013.



1 USACE-U.S. Army Corps of Engineers: HEC-RAS River Analysis System Hydraulic Users  
2 Manual (Version 4.1), Hydrological Engineering Center, Davis, CA, 2010.

3 [Volz, C., Rousselot, P., Vetsch, D., Mueller, R., Faeh, R., Boes, R.: Numerical modeling of dam  
4 breaching processes due to overtopping flow. In: Proc. 8th ICOLD European Club  
5 Symposium 2010, 22-23 September. Innsbruck, Austria, pp. 691–696. 2010.](#)

6 Vuichard, D. and Zimmermann, M.: The Langmoche Flash-Flood, Khumbu Himal, Nepal,  
7 Mountain Research and Development 6(1):90-94, 1986.

8 Wahl, T. L.: Uncertainty of Predictions for Embankment Dam breach Parameters, Journal of  
9 Hydraulic Engineering, 130(5), 389-397, 2004.

10 Wahl, T. L.: Dam Breach Modeling—An Overview Of Analysis Methods, Joint Federal  
11 Interagency Conference on Sedimentation and Hydrologic Modeling, June 27 - July 1, Las  
12 Vegas, NV, 2010.

13 Watanabe T., Kameyama, S., Sato, T.: Imja glacier dead-ice melt rates and changes in a supra-  
14 glacial lake, 1989-1994, Khumbu Himal, Nepal: Danger of lake drainage, Mountain  
15 Research and Development 15(4): 293–300, 1995.

16 Watanabe T., Lamsal, D., Ives, J. D.: Evaluating the growth characteristics of a glacial lake and  
17 its degree of danger of outburst flooding: Imja glacier, Khumbu Himal, Nepal, Norsk  
18 Geografisk Tidsskrift 63(4): 255–267, 2009.

19 Westoby, M. J., Glasser, N. F., Brasington, J., Hambrey, M. J., Quincey, D. J., Reynolds, J. M.:  
20 Modelling outburst floods from moraine-dammed glacial lakes, Earth Science Reviews, doi:  
21 10.1016/j.earscirev.2014.03.009, 2014.

22 [Worni, R., Stoffel, M., Huggel C., Volz, C., Casteller, A., and Luckman B.: Analysis and  
23 dynamic modeling of a moraine failure and glacier lake outburst flood at Ventisquero Negro,  
24 Patagonian Andes \(Argentina\). Journal of Hydrology 444–445: 134–145. 2012.](#)

25 WGMS-World Glacier Monitoring Service: Preliminary Glacier Mass Balance Data 2010/2011,  
26 17 January 2013. (<http://www.wgms.ch/mbb/sum11.html>) accessed 10 March  
27

1

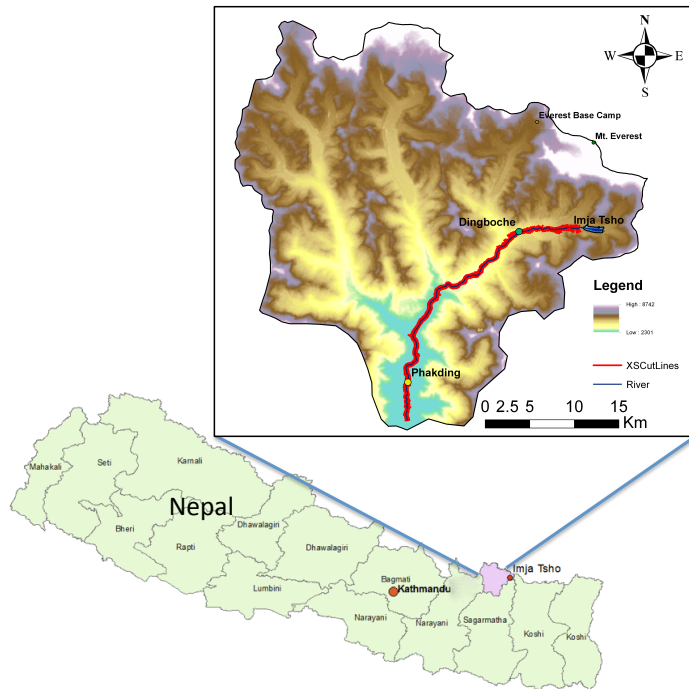


Figure 1. Location of Imja Tsho in the Khumbu region of Nepal.

Daene McKinney 2/13/2015 8:40 AM

**Deleted:** Imja Lake

Daene McKinney 2/14/2015 2:18 PM

**Deleted:** Source: Nepal map - ESRI, World Imagery (2014); Image - Google Earth (2014).



Figure 2. The village of Dingboche on the Imja Khola showing the river (right) and the relative height from the river course to the arable land and houses (about 22 m).



Figure 3. Bridge across the Dudh Koshi at the Star Lion Resort near the village of Phakding showing the bridge and the relative height from the river course to the arable land and houses (about 10 to 13 m).

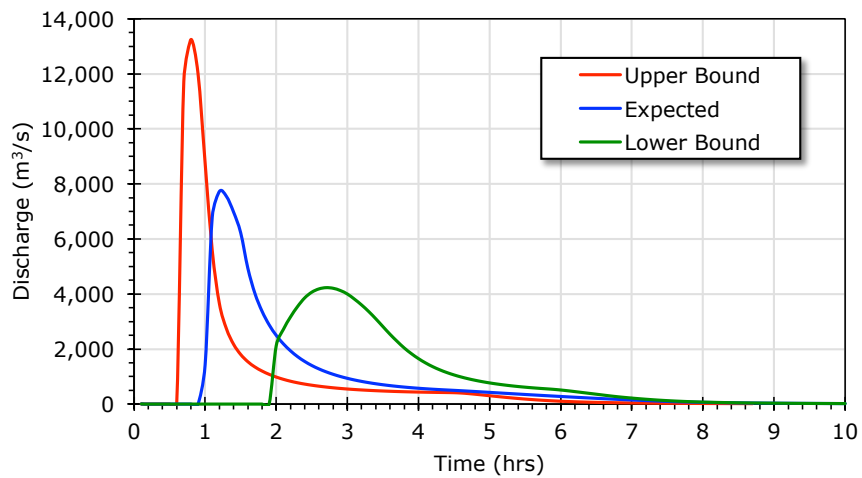


Figure 4. Upper bound, expected and lower bound GLOF hydrograph at Dingboche (cross section shown in Fig. 4) under current lake conditions.

Daene McKinney 2/14/2015 2:34 PM  
Deleted: 2

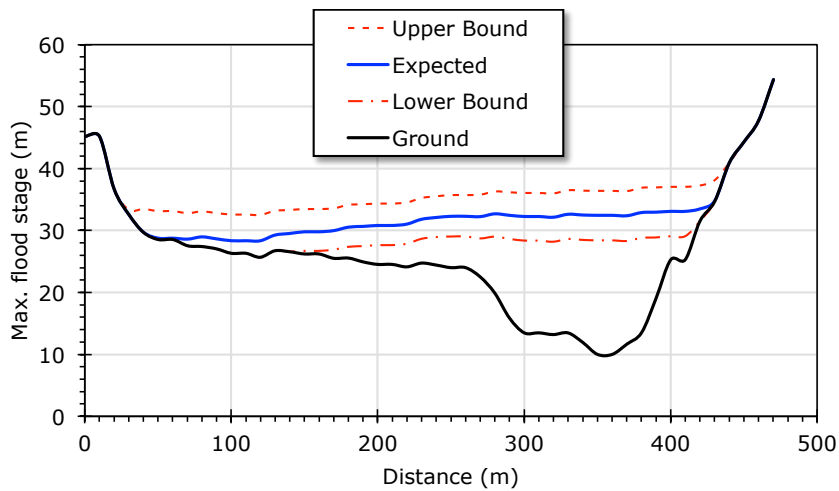
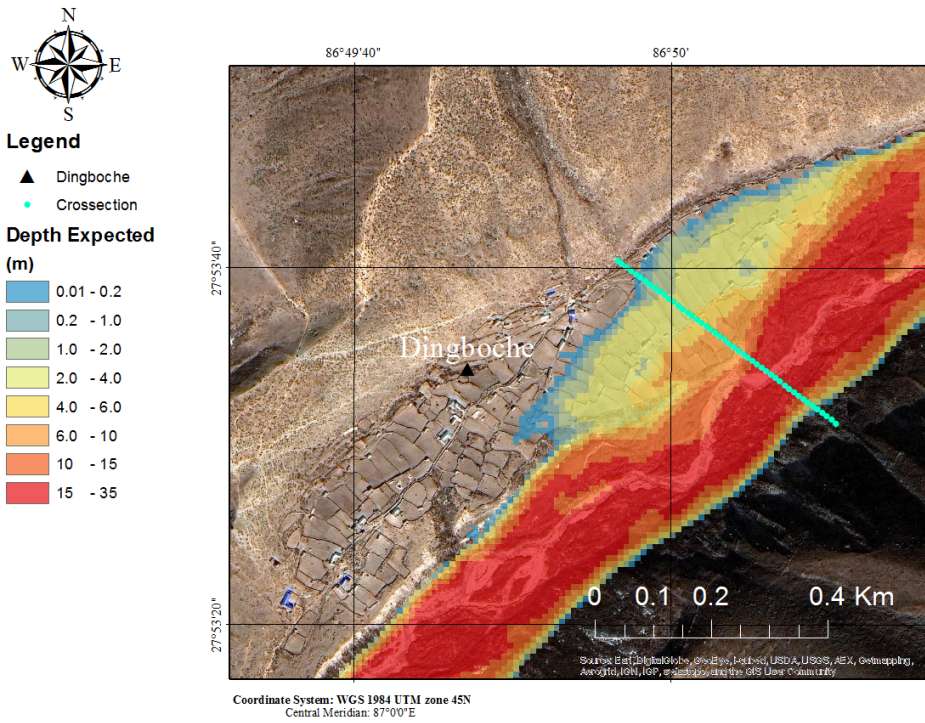


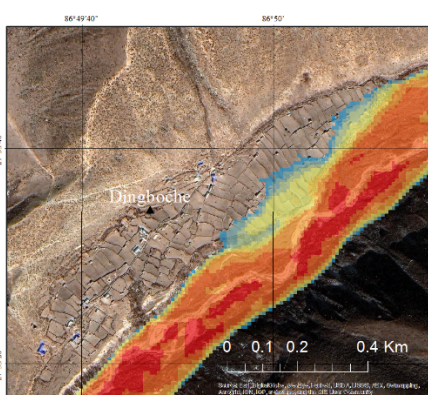
Figure 5. Upper bound, expected and lower bound GLOF flood stage at Dingboche (cross section shown in Figure 4) under current conditions .

Daene McKinney 2/14/2015 2:34 PM  
Deleted: 3

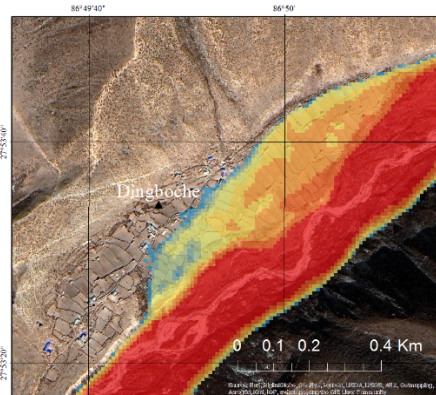




1 (a)



2 (b)

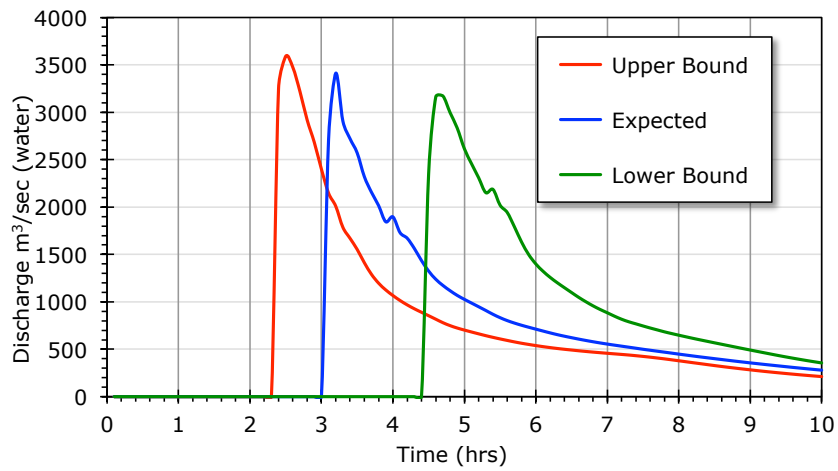


(c)

3 | Figure 6. Inundation at Dingboche under current lake conditions: (a) expected inundation and the  
 4 location of the cross section where the different scenarios are compared; (b) lower bound; and (c)  
 5 upper bound of the possible inundation.

Daene McKinney 2/14/2015 2:34 PM  
Deleted: 4

1



2

3 | Figure 7. Upper bound, expected and lower bound GLOF hydrograph under current conditions at  
4 Phakding.

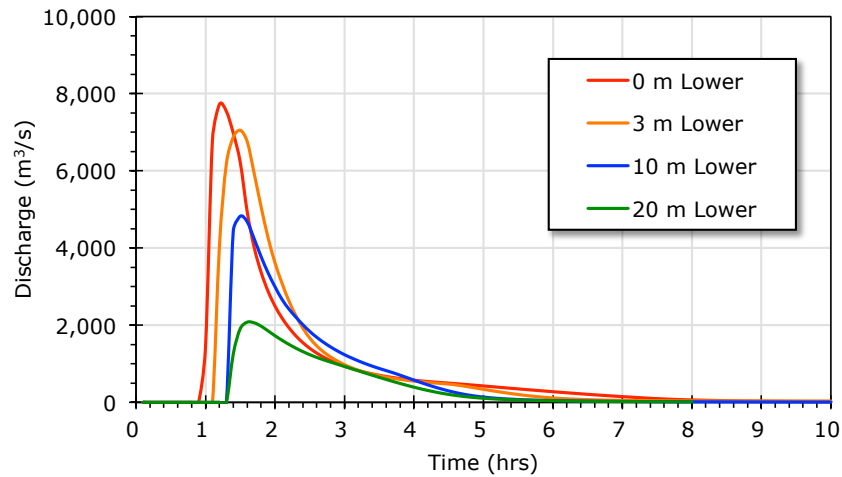
5

6

7

Daene McKinney 2/14/2015 2:36 PM  
Deleted: 5

1



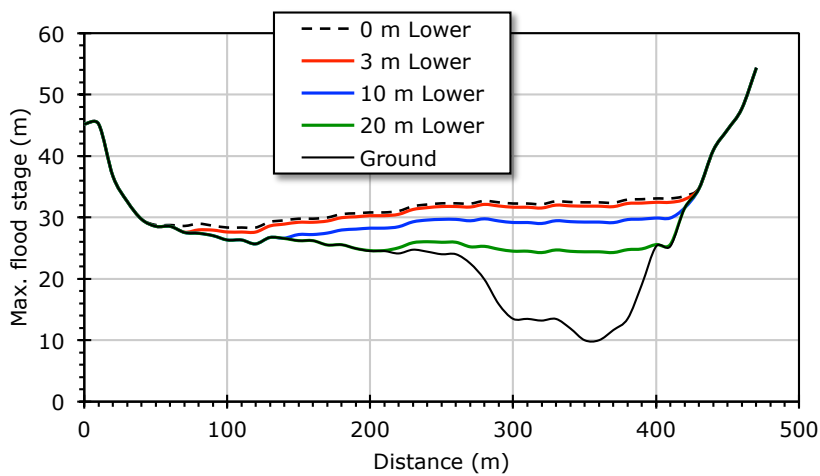
2

3 | Figure 8. GLOF hydrographs at Dingboche under current lake conditions for 0 m, 3 m, 10 m and  
4 20 m lake lowering scenarios.

Daene McKinney 2/14/2015 2:36 PM

Deleted: 6

5



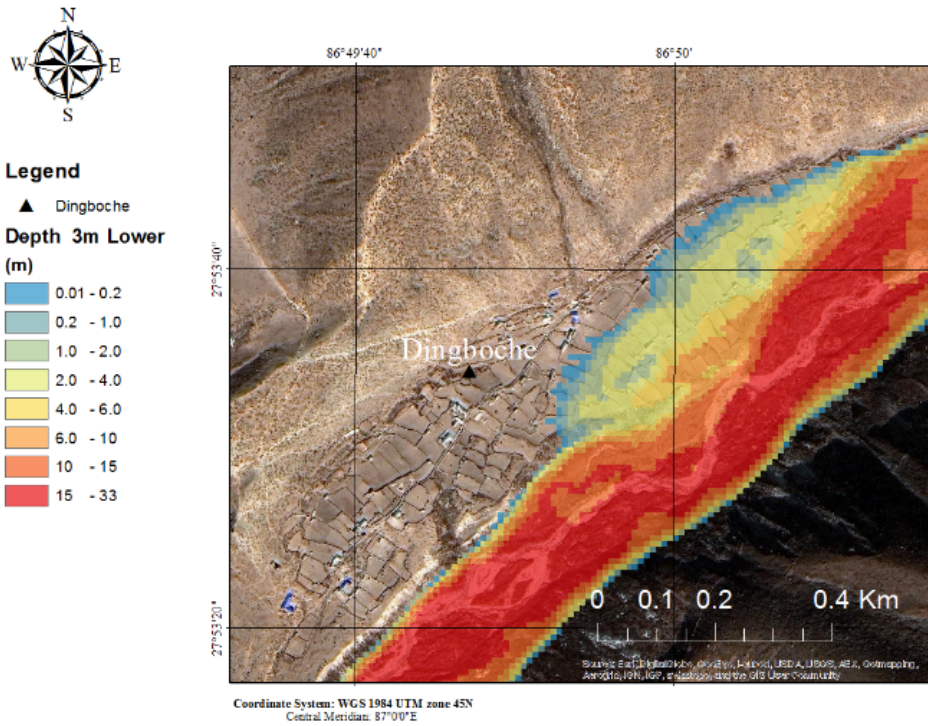
6

7 | Figure 9. GLOF flood stage at Dingboche under current lake conditions for 0 m (Expected), 3 m,  
8 10 m and 20 m lake lowering scenarios.

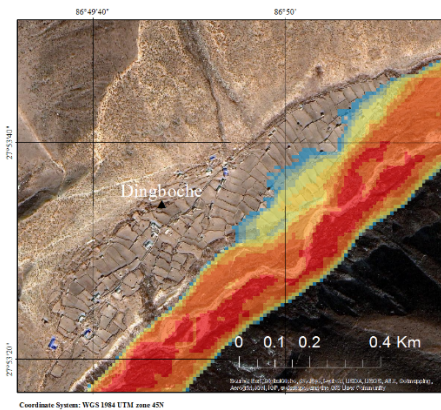
Daene McKinney 2/14/2015 2:36 PM

Deleted: 7

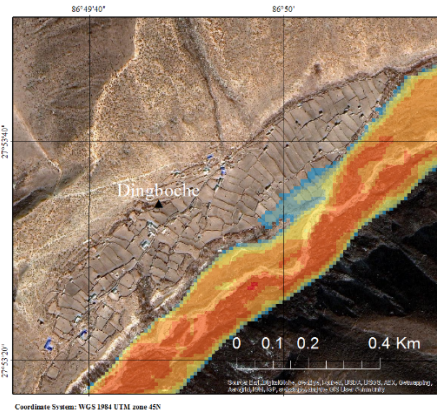
9



1 (a)



2 (b)



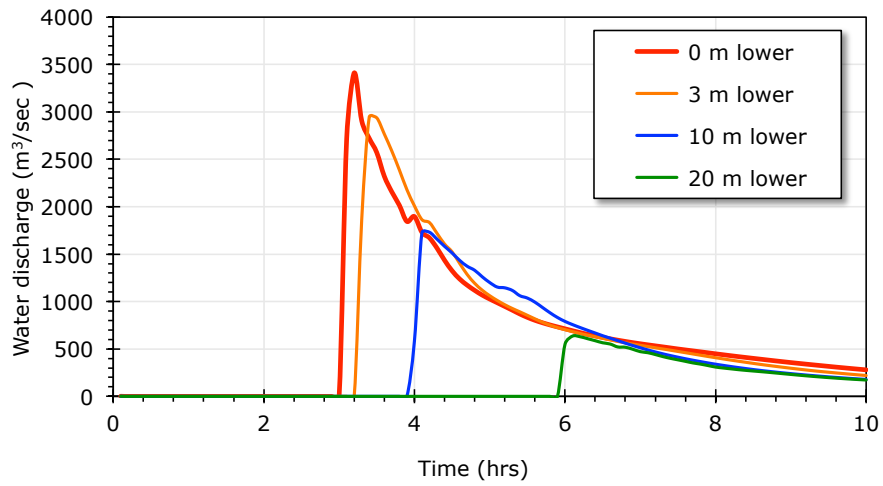
(c)

Figure 10. Inundation depth at Dingboche under current lake conditions: (a) 3 m lake lowering; (b) 10 m lake lowering; and (c) 20 m lake lowering.

Daene McKinney 2/14/2015 2:36 PM  
Deleted: 8



1



2

3 | Figure 11. GLOF hydrographs at Phakding under current conditions for 0 m, 3 m, 10 m and 20 m  
4 lake lowering scenarios.

5

6

Daene McKinney 2/14/2015 2:37 PM  
Deleted: 9

1  
2 Table 1. Moraine Parameter Values Used in the Breaching Equations.

Parameter	Scenario			
	Current conditions	Lake lowering		
		3 m	10 m	20 m
Moraine height ( $h_d$ , m)	35	32	25	15
Breach height ( $h_b$ , m)	35	32	25	15
Water height ( $h_w$ , m)	35	32	25	15
Water volume above breach invert ( $V_w$ , million m <sup>3</sup> )	33.5	29.5	22.4	12.5

msomos 2/12/2015 1:37 PM  
Deleted: L

msomos 2/12/2015 1:37 PM  
Deleted: C

3  
4 Table 2. Prediction Error and Uncertainty Bands for the Froehlich Breaching Equations.

Parameter	Mean prediction error ( $e$ )	uncertainty band ( $\pm 2Se$ )
Breach width ( $B$ , m)	0.01	$\pm 0.39$
Failure time ( $t_f$ , hr)	-0.22	$\pm 0.64$
Peak discharge ( $Q_p$ , m <sup>3</sup> /s)	-0.04	$\pm 0.32$

msomos 2/12/2015 1:37 PM  
Deleted: U

msomos 2/12/2015 1:37 PM  
Deleted: B

msomos 2/12/2015 1:36 PM  
Deleted: P

msomos 2/12/2015 1:37 PM  
Deleted: E

msomos 2/12/2015 1:37 PM  
Deleted: W

msomos 2/12/2015 1:37 PM  
Deleted: T

msomos 2/12/2015 1:37 PM  
Deleted: D

1 Table 3. Breach Parameter Expected Values and Uncertainty Bands for Four Scenarios.

Scenario	Value type	Breach width $B$ (m)	Failure time $t_f$ (hr)	Peak discharge $Q_p$ (m <sup>3</sup> /s)
Current conditions	Lower bound	36	0.38	4342
	Predicted	91	1.01	8274
	Upper bound	218	7.32	18955
Lower 3 m	Lower bound	34	0.39	3742
	Predicted	86	1.02	7131
	Upper bound	206	7.39	16336
Lower 10 m	Lower bound	30	0.42	2539
	Predicted	75	1.1	4838
	Upper bound	180	7.97	11083
Lower 20 m	Lower bound	22	0.49	1135
	Predicted	56	1.28	2163
	Upper bound	134	9.27	4955

msomos 2/12/2015 1:38 PM

Deleted: W

msomos 2/12/2015 1:38 PM

Deleted: T

msomos 2/12/2015 1:38 PM

Deleted: D

msomos 2/12/2015 1:38 PM

Deleted: T

msomos 2/12/2015 1:38 PM

Deleted: C

1 Table 4. Inundation Model Expected Values and Uncertainty Bands at Imja Tsho, Dingboche  
2 and Phakding for Current Lake Conditions.

Station	Value	Arrival time (hr)	Peak time (hr)	Peak discharge (m <sup>3</sup> /s)	Peak stage (m)
Below <u>Imja Tsho</u>	Lower bound	0.8	2.3	4272	12.1
	Predicted	0.3	1.0	8394	16.6
	Upper bound	0.2	0.5	19000	33.4
Dingboche	Lower bound	1.9	2.8	4208	18.4
	Predicted	1.0	1.3	7544	22.4
	Upper bound	0.6	0.8	13248	26.4
Phakding	Lower	4.4	4.7	3171	
	Predicted	3.1	3.2	3412	
	Upper	2.4	2.6	3473	

Daene McKinney 2/13/2015 8:40 AM  
Deleted: Imja Lake

msomos 2/12/2015 1:38 PM

Deleted: T

msomos 2/12/2015 1:38 PM

Deleted: T

msomos 2/12/2015 1:38 PM

Deleted: D

msomos 2/12/2015 1:38 PM

Deleted: S

msomos 2/12/2015 1:39 PM

Deleted: B

Daene McKinney 2/13/2015 8:40 AM

Deleted: Imja Lake

msomos 2/12/2015 1:39 PM

Deleted: B

msomos 2/12/2015 1:40 PM

Deleted: B

msomos 2/12/2015 1:40 PM

Deleted: B

1 Table 5. Inundation Model Results at Dingboche and Phakding for Lake Lowering Scenarios  
 2 Under Current Conditions.

Lake lowering scenario (m)	Arrival time (hr)	Peak time (hr)	Peak discharge (m <sup>3</sup> /s)	Peak discharge reduction* (%)	Peak depth (m)	Peak depth reduction* (%)	Farm area inundated (m <sup>2</sup> )	Buildings inundated (#)
Dingboche								
0	1.0	1.3	7544	0	22.4	0	93650	29
3	1.1	1.5	7053	6.5	21.8	2.7	86262	25
10	1.3	1.6	4479	40.6	19.2	14.3	40226	18
20	1.3	1.8	1975	73.8	14.4	35.9	10686	0
Phakding								
0 m	3.1	3.2	3412	0				
3 m	3.2	3.5	2937	13.9				
10 m	3.9	4.2	1730	49.3				
20 m	5.8	6.1	629	81.8				

3 \* Relative to the peak value for 0 m lake lowering.

4

- msomos 2/12/2015 1:40 PM  
Deleted: L
- msomos 2/12/2015 1:40 PM  
Deleted: D
- msomos 2/12/2015 1:40 PM  
Deleted: D
- msomos 2/12/2015 1:40 PM  
Deleted: A
- msomos 2/12/2015 1:40 PM  
Deleted: S
- msomos 2/12/2015 1:40 PM  
Deleted: T
- msomos 2/12/2015 1:40 PM  
Deleted: T
- msomos 2/12/2015 1:40 PM  
Deleted: D
- Daene McKinney 2/15/2015 10:26 AM  
Deleted: d
- msomos 2/12/2015 1:40 PM  
Deleted: R
- msomos 2/12/2015 1:40 PM  
Deleted: D
- msomos 2/12/2015 1:40 PM  
Deleted: R
- msomos 2/12/2015 1:40 PM  
Deleted: I
- msomos 2/12/2015 1:41 PM  
Deleted: I