

Assessing Downstream Flood Impacts Due to a Potential GLOF from Imja Tsho in Nepal

Marcelo A. Somos-Valenzuela¹, Daene C. McKinney¹, Alton C. Byers², David R. Rounce¹, Cesar Portocarrero³, Damodar Lamsal⁴

[1] {Center for Research in Water Resources, University of Texas at Austin, Austin, Texas, USA}

[2] {The Mountain Institute, Washington DC, USA}

[3] {Independent Consultant, Huaraz, Peru}

[4] {Graduate School of Environmental Studies, Nagoya University, Japan}

Correspondence to: D. C. McKinney (daene@aol.com)

ABSTRACT

Glacial-dominated areas pose unique challenges to downstream communities in adapting to recent and continuing global climate change, including increased threats of glacial lake outburst floods (GLOFs) that can increase risk due to flooding of downstream communities and cause substantial impacts on regional social, environmental and economic systems. The Imja glacial lake (or Imja Tsho) in Nepal, with potential to generate a GLOF, was studied using a two-dimensional debris flow inundation model in order to evaluate the effectiveness of proposed measures to reduce possible flooding impacts to downstream communities by lowering the lake level. The results indicate that only minor flood impact reduction is achieved in the downstream community of Dingboche with modest (~3 m) lake lowering. Lowering the lake by 10 m shows a significant reduction in inundated area. However, lowering the lake by 20 m almost eliminates all flood impact at Dingboche. Further downstream at Phakding, the impact of the GLOF is significant and similar reductions in inundation are likely as a result of lake lowering.

KEYWORDS:

Imja Tsho, glacial lake outburst flood, climate change

1 INTRODUCTION

Recent worldwide retreat of glaciers (WGMS, 2013) has been very evident in the Mt. Everest region of Nepal where glacial lakes continue to form and grow; significantly increasing the risk of glacier lake outburst floods (GLOFs) (Bajracharya et al., 2007a; ICIMOD, 2011; Ives et al., 2010; Shrestha and Aryal, 2011). Many of these lakes are considered potentially dangerous (Bajracharya et al., 2007a; Bolch et al., 2008; Watanabe et al., 2009; ICIMOD 2011). Therefore; risk and vulnerability assessments of communities and assets located downstream of glacial lakes in this region have become necessary. Remedial actions have been taken to reduce the risk of GLOF, in one case at Tsho Rolpa lake (Rana et al., 2000) and another is under design at Imja Tsho (or Imja Lake) (UNDP 2013). In the region near Imja Tsho (Figure 1), there have been 2 GLOFs in recent decades, Nare (1977) and Dig Tsho (1985), resulting in significant damage to farms, villages, trails and some loss of life (Buchroithner et al., 1982; Ives, 1986; Vuichard and Zimmermann, 1986).

Imja Tsho, located in the Khumbu region (27.9° N, 86.9° E, Fig. 1), is a supraglacial lake formed on top of Imja glacier, and it is bounded on the east by the Lhotse-Shar and Imja glaciers, on the north and south by lateral moraines, and to the west by a 700m wide by 700m long ice-cored terminal moraine complex that has an outlet that drains the lake feeding into the Imja Khola (or Imja River) (Watanabe et al., 2009; Somos-Valenzuela et al., 2013).. The lake, which did not exist in 1960, has experienced rapid growth in area and volume since then; by 2002 it had a volume of 35.8 ± 0.7 million m^3 (Sakai et al., 2007), and by 2012 the volume had increased to 61.7 ± 3.7 million m^3 (Somos-Valenzuela et al., 2014). The western, down-valley expansion has stabilized in recent years while the eastern expansion continues unabated (Watanabe et al., 2009) mostly through calving from the glacier terminus. Avalanche debris falling from surrounding high mountains and hanging ice is prevented from entering the lake by the high lateral moraines, which are separated from the surrounding mountains by several 10s of meters (Hambrey et al., 2008). The bottom of the lake has continued to lower as the ice of the glacier beneath the lake melts (Watanabe et al., 1995; Fujita et al., 2009; Somos-Valenzuela et al., 2014).

1 The characterization of the risk of Imja Tsho is somewhat controversial, with some
2 researchers declaring it to be relatively dangerous (Hammond, 1988; Kattelman, 2003; Ives et
3 al., 2010), and others concluding that it may be stable (Fujita et al., 2009; Watanabe et al., 2009;
4 ICIMOD, 2011). ICIMOD (2011) identified Imja Tsho as one of six high-priority glacial lakes in
5 Nepal that require detailed investigation, while other studies have stated that Imja Tsho is safe
6 (Fujita et al., 2013) or very low risk (Hambrey et al., 2008). These conflicting classifications are
7 confusing and can be misleading to the general public and communities downstream, who are the
8 stakeholders these studies are meant to assist. Imja Tsho is among six glacial lakes identified in
9 the Nepal National Adaptation Plan of Action (NAPA) as having at the most immediate risk of
10 bursting (MoE, 2010). The United Nations Development Program (UNDP) is implementing the
11 “Community Based Flood and Glacial Lake Outburst Risk Reduction Project” in an effort to
12 reduce the possible risk to downstream communities posed by the lake. According to the UNDP
13 project strategy (UNDP, 2013), the “GLOF risks arising from Imja Tsho will be significantly
14 reduced by reducing the lake volume through an artificial controlled drainage system combined
15 with a community-based early warning system.” They recommend lowering the lake level by at
16 least 3 meters to achieve this risk reduction.

17 Dingboche is probably the most risk prone area from a potential Imja GLOF. The villages
18 of Chukkung (~ 4 km) and Dingboche (~ 8 km) are the two nearest settlements from the lake.
19 The former is located relatively off the Imja Khola (stream), so at less risk, whereas the latter is
20 the largest settlement along the stream and it has extensive agricultural lands and buildings
21 within 10-20 m elevation from the stream that will be flooded in the event of a GLOF unless
22 flood prevention measures are taken. Two villages in the path of a potential GLOF from Imja
23 Tsho have been the focus of the work reported here: Dingboche (27° 53.563' N, 86° 50.092' E,
24 4410 m) about 8 km downstream from the lake and Phakding (27° 44.624' N, 86° 42.767' E,
25 2569 m) about 33 km below Imja Tsho. Dingboche is a village of about 200 residents with an
26 economy that depends on local agriculture and trekking and climbing tourism. Figure 2 shows
27 the Imja Khola and the relative height from the river course to the arable land and houses (about
28 22 m above the river). About 34 km downstream of the lake outlet are low-lying portions of the
29 village Phakding, which is a village of about 1500 residents with an economy that depends on
30 local agriculture and trekking tourism. Most of the village is quite high above the river and is

not at risk of damage from a GLOF. However, several farms and lodges are quite close to the river. Figure 3 shows the bridge crossing the Dudh Koshi and the relative height from the river course to the Star Lion lodge (about 13 m above the river). Lukla, a gateway to the Everest trekking area, can be excluded from consideration here because of its high location from the current riverbed, so that discussion on the section between the lake and Phakding is appropriate.

In this paper we present a new, two-dimensional debris flow model for predicting the potential GLOF hazard from Imja Tsho in terms of inundation depth in downstream communities and present a measure of uncertainty in the GLOF inundation predictions. We analyze four scenarios: current lake conditions, and three risk mitigation scenarios with the lake water level lowered 3, 10 or 20 m below the current level. Finally, we discuss possible methods for lowering the lake water level to reduce the GLOF hazard. To the authors' knowledge, this is the first attempt to quantify the impact that various flood control alternatives would have on potential GLOF damage in downstream villages.

2 METHODOLOGY

2.1 Data

To model the propagation of a GLOF from Imja Tsho to the downstream community of Dingboche, we used two Digital Elevation Models (DEMs) for the Imja Tsho GLOF model: (1) a 5 m x 5 m grid cell DEM of the Imja-Lhotse Shar glacier and the moraine surrounding the lake generated from 2006 ALOS imagery (Lamsal et al., 2011); and (2) a DEM extending from the lake to just below Dingboche derived using the method of Lamsal et al. (2011). These DEMs provide adequate resolution and terrain data for flooding and inundation modeling; however, they cover only 11 km of the river basin downstream from the lake. Expanded 5 m x 5 m DEM coverage downstream of Dingboche could be produced, but ALOS imagery was not available for this work. Instead, we used a lower resolution DEM for the region downstream of Dingboche to just below the village of Phakding. Initially a 30 m x 30 m resolution DEM was produced from Advanced Space borne Thermal Emission and Reflection Radiometer (ASTER L1) data (Tachikawa, 2011). However, ASTER L1 data has too many unrealistic features such as many ponds between Imja Tsho and Phakding that don't exist according to our field observations. Therefore, we decided to use the DEM created from 40 m interval contour topographic maps

1 produced by Bajracharya et al. (2007b). The modeled portion of the river has a length of 38.5 km
2 from the lake outlet to a point 5 km downstream of the village of Phakding.

3 Roughness coefficients for eight categories of land cover in the basin were assigned using
4 land cover maps derived from 2006 ASTER imagery for the Sagarmatha National park
5 (Bajracharya and Uddin, 2010). These values agreed well with those that Cenderelli and Wohl
6 (2001) calculated for the Imja Khola (0.15 and 0.30 for the riverbed and floodplain,
7 respectively), and values that the Flo-2D manual (Flo-2D, 2012) recommends for the types of
8 land cover found in the basin.

9 Somos-Valenzuela et al. (2014) conducted a bathymetric survey of Imja Tsho in 2012
10 and estimated the lake volume was 61.7 ± 3.7 million m^3 and 34.1 ± 1.08 million m^3 of water could
11 drain from the lake was if the lake surface elevation decreases 35 m from 5010 m to 4975 m (the
12 elevation of the valley floor below the lake). For the Imja Tsho GLOF model, the lake
13 bathymetry was combined with the DEM of the surrounding moraines and the glacier and used
14 as input to the moraine dam breach model described below.

16 **2.2 Moraine Dam Breach Model**

17 In order for a GLOF to occur from Imja Tsho, a triggering event is necessary. Such triggers may
18 include slow melting of the ice core within the damming moraine, seepage and piping through
19 the dam and earthquakes (Kattelman and Watanabe, 1998; Somos-Valenzuela et al., 2013).
20 Other factors that may trigger a GLOF from Imja Tsho include excessive rain and potential
21 blockage of the outlet that may be produced by the ice that it is calved at the glacier terminus..

22 We observed seepage from the base of the southern portion of the damming moraine
23 during five visits to the lake between 2011 and 2014. In September 2013 the seepage was
24 measured using a tape measure and portable velocity meter (Global Water flow probe FP111
25 turbo prop positive displacement sensor with a range of 0.1-6.1 m/s and an accuracy of 0.03048
26 m/s). At the seepage outlet, 2 sets of measurements were taken and an average flow of 0.005
27 m^3/s was calculated. In addition, 3 sets of flow measurements were made at the Imja Tsho outlet
28 (bridge over the Imja Khola) and an average flow of $2.2 \text{ m}^3/\text{s}$ was calculated.

29 To model a potential moraine breach initiating a GLOF from Imja Tsho, we use a
30 combination of moraine breach analysis tools. First, the shape, final size, and failure time of the

breach are estimated from empirical equations. Failure time is the time needed for complete development of the breach from the initial breakthrough to the end of lateral enlargement (Froehlich, 2008). Second, these parameters are used in a HEC-RAS dam breach model (USACE, 2010) to simulate the breach hydrograph, which is then used as input to a 2-D downstream inundation model.

There are a number of empirical dam breach equations in the literature (Wahl, 2010; Westoby et al., 2014). However, the equations developed by Froehlich (1995) were selected for use here because Wahl (2004) found these equations to have the lowest uncertainty among a large number of equations studied. Froehlich's equations (Froehlich 1995) were used to predict breach width (B , m), failure time (t_f , hr) and peak discharge (Q_p , m³/s) are

$$B = 0.1803kV_w^{0.32}h_b^{0.19} \quad (1)$$

$$t_f = 0.00254V_w^{0.53}h_b^{-0.9} \quad (2)$$

$$Q_p = 0.607V_w^{0.295}h_w^{1.24} \quad (3)$$

where the moraine parameters in these equations are the breach height (h_b , m), the drainable water volume (V_w , m³), the depth of water above the breach invert at the time of failure (h_w , m), and overtopping multiplier k ($k = 1$ for no overtopping, and $k = 1.4$ for overtopping). The values of these parameters are shown in Table 1. The value of V_w in Table 1 was taken from the 2012 bathymetric survey results of Somos-Valenzuela et al. (2014). From a large database of dam breach cases, Wahl (2004) derived equations to calculate upper (P_u) and lower (P_l) bounds for the breach parameters

$$\{P_l, P_u\} = \{P_p \cdot 10^{-e-2Se}, P_p \cdot 10^{-\bar{e}+2Se}\} \quad (4)$$

where P_p is the predicted breach parameter value (B , t_f , or Q_p) estimated by Equations (1)-(3), e and $2Se$ are the mean prediction error and the uncertainty band (Wahl, 2004) (see Table 2).

Froehlich's equations provide estimates of the breaching parameters, but to simulate the downstream inundation, the full hydrograph of the breaching event is needed. To obtain full breach hydrographs (lower, predicted and upper) we use the HEC-RAS dam break model (USACE, 2010) with the breach width (B) and failure time (t_f) calculated from Equations (1)–(2). These hydrographs were adjusted to match the peak discharge (Q_p) values estimated from Equation (3).

2.3 Inundation Model

FLO-2D is used to calculate the flooding downstream of Imja Tsho due to a potential GLOF with the breaching hydrograph discussed in the previous section. The model is suitable to simulate the propagation of the debris flow (FLO-2D, 2012), since the effects of sediments and debris have been shown to be very important factors in GLOF events (Osti and Egashira, 2009). Although the geometry of the grid within Flo-2D is two dimensional, the flow is modeled in eight directions and the model solves the one-dimensional Saint Venant equation independently in each direction. The continuity and momentum equations are solved with a central, finite difference method using an explicit time-stepping scheme. The total friction slope can be expressed as (O'Brien et al., 1993; Julien, 2010; Flo-2D, 2012)

$$S_f = S_y + S_v + S_{td} = \frac{\tau_y}{\gamma_m h} + \frac{K\eta\omega}{8\gamma_m h^2} + \frac{n^2 V^2}{h^{4/3}} \quad (5)$$

where S_y is the yield slope, S_v is the viscous slope, S_{td} is the turbulent-dispersive slope, τ_y is the Mohr-Coulomb yield stress, γ_m is the specific weight of the sediment mixture, K is a resistance parameter, η is the Bingham dynamic viscosity, V is the depth-averaged velocity, n is the Manning roughness coefficient. Rheological properties, η and τ_y , are formulated as exponential functions of the sediment volume concentration c_v (Julien and Leon, 2000; Julien, 2010)

$$\eta = \alpha_2 e^{\beta_2 c_v} \quad (6)$$

$$\tau_y = \alpha_1 e^{\beta_1 c_v} \quad (7)$$

where α_i and β_i are empirical coefficients defined by laboratory experiment (Flo-2D, 2009). Since we have very limited geological information for the study area, the values recommended by the Flo-2D manual for α_i and β_i are used ($\alpha_1 = 0.0765$, $\beta_1 = 16.9$, $\alpha_2 = 0.0648$ and $\beta_2 = 6.2$). Rickenmann (1999) and Julien and Leon (2000) recommend using a concentration of 50% as an upper limit for debris flows when no other information is available and this value.

3 RESULTS

The Imja GLOF model described above was used to model four scenarios of a GLOF occurring from Imja Tsho: current lake conditions with the water surface at 5010 m, and three flood mitigation scenarios with the lake water level lowered 3, 10 and 20 m, respectively. The flood

mitigation scenarios represent possible lake lowering efforts starting with the current UNDP project to lower the lake at least 3 m. In case that scenario does not provide any significant flood reduction downstream at Dingboche, the other scenarios can provide some guidance as to how much farther the lake might need to be lowered to achieve reduced risk. It is important to note that no other studies have analyzed the potential benefits of lowering Imja Tsho and that the selection of a preferred lake lowering alternative needs to be based on such an analysis as that presented here.

3.1 Moraine Breaching Model

3.1.1 Breach Parameters

Table 3 shows the results of using Equations (1)-(3) and the moraine characteristics in Table 1 to calculate the lower bound, predicted, and upper bound values of the breaching parameters (B , t_f , and Q_p). The upper and lower bounds of the breaching parameters were calculated from Equations (4)-(5) using the prediction errors and uncertainty bands from Table 2. Lowering the lake level by 3 m does not result in a significant change in the failure time and only a 13.8% decrease in the peak discharge. However, lowering the level by 10 m has a major impact on peak discharge, reducing it by 58.5% and further lowering of the level to 20 m reduces the discharge by 73.8%.

3.1.2 Breach Hydrographs

Discharge hydrographs for potential moraine breaches at Imja Tsho were computed using the HEC-RAS dam break module and the lower bound, predicted, and upper bound breach parameters under the current conditions scenario (see Table 4). The HEC-RAS hydrograph peak discharges were matched to the peak discharge values in Table 3 by adjusting the failure time within the range shown in the table. The predicted peak discharge is 8394 m³/s (see Table 4 – Imja Tsho) compared to 8274 m³/s computed with Froehlich's equation, a difference of 1.4%. The range of peak discharge (upper minus lower bound) is 14728 m³/s compared to 14613 m³/s computed by Froehlich's equation, about 0.8% difference. These results indicate good agreement between the HEC-RAS computed hydrograph values and the empirical Froehlich equation values.

3.2 Inundation Model

The Flo-2D inundation model was used to compute the results of the 4 potential Imja Tsho GLOF scenarios. The first scenario considers the lake in its current condition with the lake level at 5010 m above mean sea level. Then alternatives with lake levels 3, 10, and 20 m lower than this were considered.

3.2.1 Current Conditions Scenario

The results (lower bound, expected value, upper bound) of modeling a potential GLOF from Imja Tsho under current conditions are shown in Table 4 and Figures 4-6 at Dingboche (at the cross section indicated in Figure 4). Table 4 also shows the flood arrival time, peak time, peak stage, and flood peak discharge just downstream of Imja Tsho and at Dingboche. Figure 4 shows the expected GLOF discharge hydrograph and bounds at Dingboche. The flood arrives at Dingboche 1 hour after the breaching begins (range 0.6-1.9 hr), peaks at 1.3 hours (range 0.8-2.8 hr) and is over after about 7 hours. Figure 5 shows the flood stage at Dingboche (upper bound, expected value, lower bound). The highest expected flood stage is 22.4 m (range 18.4-26.4 m) and the peak flow is 7544 m³/s (range 4208-13248 m³/s). Figure 6a shows the expected inundation at Dingboche. The lower and upper bounds are also shown in Figures 6b and c, respectively.

The inundated area at Dingboche was mapped in GIS and shows that, under the expected value simulation, most of the inundation is in the farming terrace areas and not the main lodges and other infrastructure along the primary trekking trail through the village (see Figure 6a). With no lake lowering, about 9.4 ha of farmland will be inundated and 29 structures impacted (see Table 5, 0 m lowering scenario).

Further downstream at Phakding, the flooding also has an impact on potential flooding. At Phakding, the flood arrives 3.1 hours (range 2.4-4.4 hrs) after the breaching begins and peaks at 3.2 hours (range 2.6-4.7 hrs) with a peak discharge of 3412 m³/s (range 3171-3473 m³/s) (see Figure 7). The lag time between the peak flow at Imja Tsho and the peak at Phakding is 2.2 hours (see Table 4).

3.2.2 Lake Lowering Scenarios

A proposal to reduce the risk of a GLOF from Imja Tsho that is currently (2014) under implementation is to lower the water level of the lake at least 3 m (UNDP, 2013). The Imja GLOF model was used to assess the potential flood reduction at Dingboche if such a plan were to be implemented. To this end, the model was run with lake levels 3, 10, and 20 m lower than the current conditions scenario level (5010 m). The results for these scenarios are shown in Table 5 and Figures 8-10. Figures 8 and 9 show the hydrographs and flood stage, respectively, at Dingboche for the 0, 3, 10 and 20 m lake lowering scenarios. Figure 10 maps the inundation depth at Dingboche for the different lake lowering scenarios. Lowering the lake 3 m (Figure 10a) results in a 2.7% reduction in the peak flood depth at Dingboche (compared to the 0 m lowering scenario) with the peak flood height lowering 0.6 m (from 22.4 m to 21.8 m). This flood height still leads to significant inundation of homes and farmlands. With the lake lowered by 3 m about 8.6 ha of farmland and 25 structures are impacted by the flooding. In contrast, lowering the lake 10 m (Figure 10b) or 20 m (Figure 10c) results in a 14% and 36% flood height reduction, respectively, at Dingboche, with respective peak flood heights of 19.2 m and 14.4 m. These scenarios lead to considerable reduction in inundated area, especially the 20 m lowering scenario where the flood stays mostly in the historic flood plain of the river, inundates little farmland and floods no structures. When the lake is lowered 10 m about 4 ha of farmland will be inundated and 18 structures impacted and at 20 m lowering about 1 ha of farmland will be inundated and 0 structures impacted. Additionally, the peak discharge is reduced by 6.5%, 40.6% and 73.8% as a result of lowering the lake by 3, 10 or 20 m, respectively (Table 5).

Further downstream at Phakding, the lake lowering scenarios have an impact on potential flooding as well (see Figure 11). Lowering the lake 3 m results in a 13.9% reduction of peak flow at Phakding. In contrast, lowering the lake 10 m results in 49.3% reduction at Phakding, and lowering 20 m results in an 81.6% reduction at Phakding (see Table 5).

4 DISCUSSION

4.1 Comparison to Previous Imja Tsho GLOF Modeling

HEC-RAS has been used to simulate GLOFs in the Nepal Himalaya by several other researchers. Cenderelli and Wohl (2001) used one-dimensional steady flow HEC-RAS modeling to estimate

1 peak discharges of the 1977 Nare and 1985 Dig Tsho GLOFs. Osti and Egashira (2009) modeled
 2 the 1998 GLOF at Tam Pokhari using HEC-RAS to perform one-dimensional, unsteady-flow
 3 calculations; however, the model could not be used to model the debris flow. They note that the
 4 GLOF was very strong and damaging, and the peak discharge was much higher than the results
 5 of the water-only computations. Other models have been used to model GLOFs. Dwivedi (2007)
 6 modeled the 1998 Tam Pokhari GLOF using the SOBEK flood model (Alkema and Middelkoop,
 7 2005) and a 40 m resolution DEM. Several breaching scenarios were simulated, and eroded
 8 sediments were not considered in the model. Shrestha et al. (2013) modeled a potential debris-
 9 flow GLOF originating at Tsho Rolpa in the Rolwaling Valley of Nepal including the moraine
 10 breaching process due to an assumed seepage failure. Laboratory experiments were conducted to
 11 verify the model and good agreement with model results were obtained. Worni et al. (2012) who
 12 used the dynamic, erosion-based dam break model BASEMENT (Faeh et al., 2011) to model a
 13 debris-flow GLOF in the Argentinian Patagonia. BASEMENT is a tool for the analysis of
 14 breaching processes of non-cohesive earthen dam structures and water-sediment flows (Volz et
 15 al., 2010). Schneider et al. (2014) simulated the cascade of mass movement processes of an
 16 avalanche triggered GLOF from Lake 513 in the Cordillera Blanca of Peru by coupling different
 17 physically-based numerical models. Glacial lake dam overtopping hydrographs and water
 18 volumes were used as input for downstream debris flow modeling with RAMMS (Christen et al.,
 19 2010).
 20 Bajracharya et al. (2007b) developed a water-flow GLOF model for Imja Tsho that simulated
 21 flood flow in the Imja Khola and Dudh Kosi from the lake to about 45 km downstream of the
 22 outlet near Phakding. That one-dimensional model used a DEM derived from satellite data (30 m
 23 x 30 m grid cells) and one interpolated from 40 m contour maps (5 m x 5 m grid cells). This is
 24 the same DEM that we used for the reach from Dingboche to Phakding. The bathymetry of Imja
 25 Tsho was taken from a 2002 survey indicating the total volume of the lake was 35.8 ± 0.7 million
 26 m^3 (Sakai et al., 2007), rather than the 61.7 ± 3.7 million m^3 total volume used in this study based
 27 on the more recent 2012 survey (Somos-Valenzuela et al., 2014). The US National Weather
 28 Service (NWS) BREACH model (Fread, 1988) was used to generate moraine breach
 29 hydrographs that were passed to a NWS FLDWAV model (Fread and Lewis, 1998) and routed
 30 downstream. Peak flows at the cross-sections of the FLDWAV model were input to a steady-

state US Army Corps of Engineers HEC-RAS model (USACE, 2010) to predict inundation at key cross sections. ICIMOD (2011) extended the work of Bajracharya et al. (2007b) using additional field results to more accurately define the geotechnical parameters of the moraine. The lake bathymetry was updated from 2009 fieldwork with the total volume reported to be 35.5 million m³ (ICIMOD, 2011). The moraine-breaching trigger was not specified and might be either overtopping or piping. The simulated breach depth was 30 m, the same as we used here.

We can compare the results of ICIMOD (2011) with those reported here, since this is being asked of the consultants working on the UNDP Imja Tsho risk reduction project (UNDP, 2013). For the breaching process, ICIMOD reported a breaching time of 2.9 hr with a peak discharge of 5817 m³/s; whereas, we calculate 1.01 hr (range 0.38 to 7.32 hr) and a peak of 8394 m³/s (range 4272 to 19000 m³/s). At Dingboche, ICIMOD reported a flood arrival of 3.1 hr with a peak of 3000 m³/s (estimated from Fig. 8.2, p. 65); whereas, we show flood arrival at 1 hr (range 0.6-1.9 hr) and a peak of 7544 m³/s (range 4208-13248 m³/s). At Ghat near Phakding, ICIMOD reported arrival at 4.2 hr with a peak of 2300 m³/s, whereas, we calculate 3.1 hr (range 2.4-4.4 hrs) with a peak of 3412 m³/s (range 3171-3473 m³/s). The reason for the differences here is most likely the use of the significantly smaller Imja Tsho volume in the ICIMOD calculations due to the bathymetry used. This causes faster propagation of larger flows downstream. In assessing the possibly reduced risk to downstream communities from implementing a lake lowering alternative, it is recommended that the latest estimates of the volume and bathymetry of Imja Tsho be used, e.g., 2012 or later.

4.2 Options for Imja Tsho Risk Reduction

To date there is no agreed upon set of hazard indicators for Imja Tsho, or other potentially dangerous glacial lakes for that matter (Somos-Valenzuela et al., 2013); however, the definition of GLOF hazard from Imja Tsho was discussed in consultations with community members in Dingboche in September 2012 and subsequently. The hazard of an Imja Tsho GLOF didn't exist 30 years ago (see Somos-Valenzuela et al. (2014) and Watanabe et al. (2009) for images showing the evolution of the lake), and the community members' vulnerabilities stem from the location of their homes and farms relative to the flood plain. For them, hazard is having their

1 farms or homes flooded or washed away, a prospect that they want reduced and preferably
2 eliminated (Somos-Valenzuela et al., 2013).

3 There are many impacts that might occur from a rapid uncontrolled GLOF from Imja Tsho that
4 will be felt downstream, in particular there are several stretches of the main trekking trail from
5 Namche Bazar to Lukla that run quite close to the river and would be washed away, as they were
6 in the 1985 Dig Tsho GLOF (Ives, 1986; Vuichard and Zimmermann, 1986). In addition, some
7 parts of villages along the trail have fields and houses near the river, and they may also be
8 impacted. The feasibility of possible remedial actions at Imja Tsho to reduce the hazard to
9 downstream communities was evaluated. One scenario that appears to have significant risk
10 reduction possibility is the slow, controlled lowering of the lake by 20 m. Lowering the lake by
11 any amount will reduce the probability of GLOF occurrence for at least two reasons, the
12 hydrostatic pressure on the west to east width of the moraine at the water level would be
13 increased and more difficult to breach. Consequently, reducing the GLOF's occurrence
14 probability would decrease the hazard level downstream.

15 Of the methods to reduce glacial lake risk, e.g., relocation of people and assets from the
16 flood path, strengthening the lake outlet (Kattelmann and Watanabe, 1998), the one that has been
17 employed the most is lowering the lake level. This has been used at nearly 40 dangerous glacial
18 lakes in Peru since the 1950s (Portocarrero, 2014). Typically, the lake is lowered to a safe level
19 by siphoning or draining and then excavating the damming moraine and installing a drainage
20 channel at the desired elevation. Often, a reinforced earthen dam is then constructed to replace
21 the original unconsolidated moraine dam, such that if a surge wave overtops the dam it will
22 contain much of the excess water and not fail from erosion (Somos-Valenzuela et al., 2013). In
23 order to lower glacial lakes, siphons are often used, e.g., at Hualcán Lake (Lake 513) in Peru
24 (Portocarrero, 2014). Lowering glacial lakes more than about 5 m is infeasible at altitudes of
25 5000 m, but greater lowering can be achieved using an incremental method as discussed below
26 (Somos-Valenzuela et al., 2013).

27 The UNDP Imja Tsho project suggests that lowering the lake “at least” 3 m will achieve
28 significant risk reduction downstream (UNDP 2013), but there is no requirement to estimate the
29 remaining risk when the lake is lowered to different levels (3 m, 10 m, 20 m). This work has

1 attempted analyze this question. Siphons may be used at Imja Tsho to progressively lower the
2 level in 3-5 m increments followed by excavation of the lake outlet.

3 Previous studies have suggested deepening and strengthening the outlet of Imja Tsho
4 (Maskey, 2012). However, there are many difficulties in implementing this method. First, the
5 natural flow of the outlet must be interrupted somehow in order to perform any excavation of the
6 channel. In the siphoning method discussed above, the lake is lowered and then the outlet can be
7 excavated to that level without needing to divert the outlet flow. One method that has been
8 proposed is to build a coffer dam and divert water to flow over another part of the damming
9 moraine and then excavate the existing outlet channel of the lake to increase its depth and
10 discharge (Maskey, 2012). The difficulties of employing this method include: (1) possibly
11 encountering ice during the excavation, significantly weakening the moraine and possibly
12 inducing a GLOF; (2) diversion of the outlet flow might cause excessive erosion that could
13 weaken the moraine and potentially lead to a GLOF; and (3) the existence of small ponds in the
14 outlet complex that are separated with shallow necks (with as little as 1.5 m depth) through
15 which the lake water flows might prevent the draining of the lake unless they were also
16 excavated (Somos-Valenzuela et al., 2013). The difficulty of encountering buried ice exists in
17 any method employing excavation of the damming moraine and the moraine must be examined
18 in detail with geophysical methods before this can be done safely. The example of Tsho Rolpa is
19 being used as a model lake lowering system for Imja Tsho (UNDP, 2013). An outlet channel was
20 constructed at Tsho Rolpa and 3 m lowering was achieved; however, the design called for
21 lowering the lake by 20 m which was never attempted because of funding limitations (Rana et
22 al., 2000; Mool et al., 2001). Our results show that lowering Imja Tsho 3 m would not lead to a
23 significant inundation reduction downstream. The lake should be lowered at least 10 m and
24 probably 20 m to achieve significant hazard reduction. Lowering Imja Tsho will require
25 draining: (1) the normal inflow to the lake; (2) the volume of the lake expansion during the time
26 of drainage; and (3) the volume of the lake necessary to achieve 3 m lowering per drainage cycle
27 (Somos-Valenzuela et al., 2013). Lake discharge was measured in May 2012 by a group from
28 Kathmandu University using a tracer dilution method (Maskey, 2012) and by the authors using a
29 timed float method (Somos-Valenzuela et al., 2013). In both cases the flow was found to be
30 approximately 1 m³/s.

1 The authors again measured the flow with a flow meter in September 2013 and found the
2 discharge to be approximately 2 m³/s (see above for description of method). The lake area was
3 1.257±0.104 km² in September 2012, and increasing by about 0.04 km²/yr. (Somos-Valenzuela
4 et al. 2014). This will require 1.353 m³/s of drainage to lower the lake 3 m during a 5-month
5 period in the melt season using 13 siphon pipes of 350 mm diameter.

6 7 **5 CONCLUSIONS**

8 Methods for reducing the downstream inundation hazard from a GLOF originating at Imja Tsho
9 in Nepal were explored. A 2-dimensional debris flow model was developed to assess the
10 downstream inundation. Inundation reducing scenarios were analyzed and an alternative under
11 design, lowering the lake at least 3 m, was found not to have significant flood reduction benefits.
12 The results indicate that the lake needs to be lowered about 20 meters in order to completely
13 reduce the impacts that a GLOF could have at Dingboche and further downstream. The results
14 show that a GLOF occurring under the current lake conditions would result in inundation of
15 much of the farming areas (about 9.4 ha and 29 structures impacted) at Dingboche but not the
16 main lodges and other infrastructure along the primary trekking trail through the village.
17 Lowering lake 3 m does not change this result much, but 10 m lowering reduces the impact
18 substantially with about 4 ha of farmland and 18 structures impacted, and at 20 m lowering
19 almost all impact at Dingboche is prevented. All cases involving lowering the lake would require
20 a coordinated sequence of siphoning to lower the water level in 3 m increments, followed by
21 outlet excavation to maintain the new level. The process would be repeated as needed to reach
22 the desired lake level.

23 24 **ACKNOWLEDGEMENTS**

25 The authors acknowledge the support of the USAID Climate Change Resilient Development
26 (CCRD) project and the Fulbright Foundation for the support of Somos-Valenzuela. The support
27 of the software developers of FLO-2D made much of the work reported here possible. The
28 comments of T. Watanabe, S. Bajracharya and an anonymous reviewer are greatly appreciated.

REFERENCES

- Alkema, D., and Middelkoop, H.: The Influence of Floodplain Compartmentalization on Flood Risk within the Rhine-Meuse Delta. *Natural Hazards* 36: 125-145, 2005.
- Bajracharya B., Shrestha, A. B., and Rajbhandari, L.: Glacial lake outburst floods in the Sagarmatha regions: hazard assessment using GIS and hydrological modeling. *Mountain Research and Development* 27: 336–344, 2007b.
- Bajracharya, B., Uddin, K.: Study of Land Cover Dynamics in Sagarmatha National Park and Buffer Zone. 10th Int. Symp. High Mt. Remote Sens. Cartogr. (Kathmandu, Nepal, 12 – 19 September 2008) pp 125–132, 2010.
- Bajracharya, S. R., Mool, P. K., and Shrestha, B. R.: Impact of Climate Change on Himalayan Glaciers and Glacial Lakes Case Studies on GLOF and Associated Hazards in Nepal and Bhutan, International Centre for Integrated Mountain Development (ICIMOD), Kathmandu, 2007a.
- Bolch T., Buchroithner, M. F., Peters, J., Baessler, M. and Bajracharya, S. R.: Identification of glacier motion and potentially dangerous glacier lakes at Mt. Everest area/Nepal using spaceborne imagery. *Natural Hazards and Earth System Sciences* 8: 1329-1340, 2008.
- Buchroithner, M. F., Jentsch, G. and Wanivenhaus, B.: Monitoring of recent geological events in the Khumbu Area (Himalaya, Nepal) by Digital Processing of Landsat MSS Data. *Rock Mechanics* 15, 181–197, 1982.
- Cenderelli D. A. and Wohl, E. E.: Peak discharge estimates of glacial-lake outburst floods and “normal” climatic floods in the Mount Everest region. *Geomorphology* 40: 57–90, 2001.
- Christen, M., Kowalski, J., and Bartelt, P.: RAMMS: numerical simulation of dense snow avalanches in three-dimensional terrain. *Cold Regions Science and Technology* 63, 1–14, 2010.

- 1 Dwivedi, S. K.: Two Dimensional Simulation of a Glacial Lake Outburst Flood (A Case Study of
2 Tam Pokhari Lake; Nepal Himalaya). M.S. Thesis, International Institute for Geo-
3 information Science and Earth Observation. Enschede, The Netherlands. February, 2007.
- 4 Faeh, R., Mueller, R., Rousselot, P., Veprek, R., Vetsch, D., Volz, C., Vonwiller, L., Farshi, D.:
5 BASEMENT – Basic Simulation Environment for Computation of Environmental Flow and
6 Natural Hazard Simulation. VAW, ETH Zurich. <<http://www.basement.ethz.ch>> (Last
7 accessed 13 February 2015). 2011..
- 8 Flo-2D: Flo-2D User's Manual, FLO-2D Software, Inc., Nutrioso, AZ, 2009.
- 9 Flo-2D: Flo-2D Pro Reference Manual, FLO-2D Software, Inc., Nutrioso, AZ, 2012.
- 10 Froehlich, D. C.: Embankment dam breach parameters revisited. Proc., 1st Int. Conf. on Water
11 Resources Engineering, American Society of Civil Engineers, August 14-18, 1995, New
12 York, 887–891, 1995.
- 13 Froehlich, D. C.: Embankment dam breaches and their uncertainties. Journal of Water Resources
14 Planning and Management, 121(1), 90–97, 2008.
- 15 Fread, D. L.: BREACH, an Erosion Model for Earthen Dam Failures, United States National
16 Weather Service, Hydrologic Research Laboratory, Silver Spring, Maryland, 58 pp., 1988.
- 17 Fread, D. L. and Lewis, J. M.: NWS FLDWAV Model, Theoretical Development, User
18 Document. Silver Spring, MD, 1998.
- 19 Fujita K., Sakai, A., Nuimura, T., Yamaguchi, S. and Sharma, R.R.: Recent changes in Imja
20 Glacial Lake and its damming moraine in the Nepal Himalaya revealed by in-situ surveys
21 and multi-temporal ASTER imagery. Environmental Research Letters 4, 045205, 2009,
22 doi:10.1088/1748-9326/4/4/045205.
- 23 Fujita, K., Sakai, A., Takenaka, S., Nuimura, T., Surazakov, A. B., Sawagaki, T. and
24 Yamanokuchi, T.: Potential flood volume of Himalayan glacial lakes. Natural Hazards and
25 Earth System Sciences, 13(7), 1827-1839. doi:10.5194/nhess-13-1827-2013, 2013.
- 26 Hambrey M. J., Quincey, D. J., Glasser, N. F., Reynolds, J. M., Richardson, S. J. and Clemmens,
27 S.: Sedimentological, geomorphological and dynamic context of debris-mantled glaciers,

- 1 Mountain Everest (Sagarmatha) region, Nepal. *Quaternary Science Reviews* 27: 2361–2389,
2 2008.
- 3 Hammond J. E.: Glacial lakes in the Khumbu region, Nepal: An assessment of the hazards.
4 Unpublished M.A. Thesis, University of Colorado, Boulder, CO, 1988.
- 5 ICIMOD-International Centre for Integrated Mountain Development: Glacial lakes and glacial
6 lake outburst floods in Nepal, International Centre for Integrated Mountain Development
7 (ICIMOD), Kathmandu, Nepal, 2011.
- 8 Ives, J.: Glacial Lake Outburst Floods and Risk Engineering in the Himalaya, International
9 Centre for Integrated Mountain Development (ICIMOD) Occasional Paper No. 5,
10 Kathmandu, Nepal, 1986.
- 11 Ives, J. D., Shrestha, R. B., and Mool, P. K.: Formation of glacial lakes in the Hindu Kush-
12 Himalayas and GLOF risk assessment. International Centre for Integrated Mountain
13 Development (ICIMOD), Kathmandu, Nepal, 2010.
- 14 Julien, P. Y.: Erosion and Sedimentation, second edition, Cambridge University Press,
15 Cambridge, UK, 2010.
- 16 Julien, P. Y., and Leon, C. A.: Mud floods, mudflows and debris flows classification, rheology
17 and structural design, Int. Work. Mudflows debris flows, p. 1-16, Caracas, Venezuela,
18 November 27- December 1, 2000.
- 19 Kattelmann, R. and Watanabe, T.: Approaches to Reducing the Hazard of an Outburst Flood of
20 Imja glacier Lake, Khumbu Himal. Proc. of International Conference on Ecohydrology of
21 High Mountain Areas, Kathmandu, Nepal 24-28 March 1996, pp. 359-366. UNESCO, 1998.
- 22 Kattelmann, R.: Glacial Lake Outburst Floods in the Nepal Himalaya: A Manageable Hazard?
23 *Nat Hazards* 28:145–154, 2003.
- 24 Lamsal, D., Sawagaki, T. and Watanabe, T.: Digital Terrain Modelling Using Corona and ALOS
25 PRISM Data to Investigate the Distal Part of Imja glacier, Khumbu Himal, Nepal. *J. Mt. Sci.*
26 8: 390-402, 2011.
- 27 Maskey R. K.: Topographic Survey and Engineering Design of the Outlet Channel and Pre-
28 feasibility Study for a Mini-Hydropower Generation Facility from Imja Lake. USAID

- ADAPT Asia-Pacific Support to UNDP/Nepal: Community Based GLOF and Flood Risk Reduction Project, United States Agency for International Development, Bangkok, 2012.
- MoE-Ministry of the Environment: National Adaptation Programme of Action to Climate Change, Kathmandu, Nepal, 2010.
- Mool, P. K., Bajracharya, S. R. and Joshi, S. P.: Risk Assessment of Lake Rolpa Glacial Lake along the Rolwaling and Tama Kosi Valleys Dolakha District, Nepal, International Centre for Integrated Mountain Development (ICIMOD), Kathmandu, Nepal, 2001.
- O'Brien, J. S, Julien, P.Y. and Fullerton, W. T.: Two-Dimensional water Flood and mudflow simulation. *J Hydraul Eng* 119:244–261, 1993.
- Osti, R., and Egashira, S.: Hydrodynamic characteristics of the Tam Pokhari Glacial Lake outburst flood in the Mt . Everest region, Nepal. *Hydrol. Process.* 23, 2943–2955, doi: 10.1002/hyp.7405, 2009.
- Portocarrero, C.: The Glacial Lake Handbook: Reducing Risk from Dangerous Glacial Lakes in the Cordillera Blanca, Peru, United States Agency for International Development, Washington, DC, 2014.
- Rana, B., Shrestha, A. B., Reynolds, J. M., Aryal, R., Pokhrel, A. P. and Budhathoki, K. P.: Hazard Assessment of the Lake Rolpa Glacier Lake and Ongoing Remediation Measures, *J. of Nepal Geological Society* 22: 563-570, 2000.
- Rickenmann, D.: Empirical Relationships for Debris Flows. *Nat Hazards* 19:47–77, 1999.
- Sakai, A., Saito, M., Nishimura, K., Yamada, T., Iizuka, Y., Harada, K., Kobayashi, S., Fujita, K. and Gurung, C. B.: Topographical survey of end-moraine and dead ice area at the Imja Glacial Lake in 2001 and 2002. *Bulletin of Glaciological Research*, 24, 29-36, 2007.
- Schneider, D., Huggel, C., Cochachin, A., Guillén, S., and García, J. Mapping hazards from glacier lake outburst floods based on modelling of process cascades at Lake 513, Carhuaz, Peru. *Adv. Geosci.*, 35, 145–155, doi:10.5194/adgeo-35-145-2014, 2014

1 Shrestha, A. B. and Aryal, R.: Climate change in Nepal and its impact on Himalayan glaciers,
2 Reg Environ Change 11 (Suppl 1):S65–S77, 2011.

3 Shrestha, B. B, Nakagawa, H., Kawaike, K., Baba, Y. and Zhang, H.: Glacial hazards in the
4 Rolwaling valley of Nepal and numerical approach to predict potential outburst flood from
5 glacial lake. Landslides 10:299–313 DOI 10.1007/s10346-012-0327-7. 2013.

6 Somos-Valenzuela, M., McKinney, D. C., Byers, A. C., Rounce, D. R., Portocarrero, C.:
7 Modeling Mitigation Strategies for Risk Reduction at Imja Lake, Nepal, High Mountain
8 Glacial Watershed Program, CRWR Online Report 13-06, Center for Research in Water
9 Resources, University of Texas at Austin, 2013

10 Somos-Valenzuela, M., McKinney, D. C., Rounce, D. R., and Byers, A. C.: Changes in Imja
11 Tsho in the Mt. Everest Region of Nepal, The Cryosphere, 8, 1661-1671, 2014,
12 doi:10.5194/tc-8-1661-2014, 2014

13 UNDP-United Nations Development Programme: Community Based Glacier Lake Outburst and
14 Flood Risk Reduction in Nepal. Project Document, UNDP Environmental Finance Services,
15 Kathmandu, Nepal, 2013.

16 USACE-U.S. Army Corps of Engineers: HEC-RAS River Analysis System Hydraulic Users
17 Manual (Version 4.1), Hydrological Engineering Center, Davis, CA, 2010.

18 Volz, C., Rousselot, P., Vetsch, D., Mueller, R., Faeh, R., Boes, R.: Numerical modeling of dam
19 breaching processes due to overtopping flow. In: Proc. 8th ICOLD European Club
20 Symposium 2010, 22-23 September. Innsbruck, Austria, pp. 691–696. 2010.

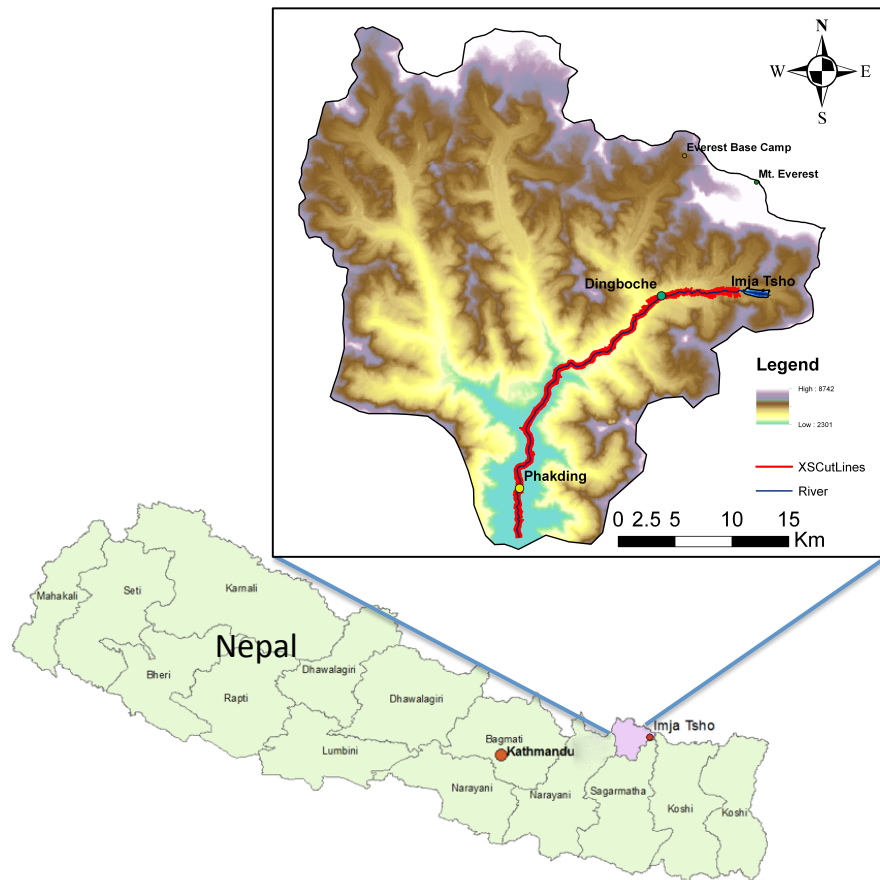
21 Vuichard, D. and Zimmermann, M.: The Langmoche Flash-Flood, Khumbu Himal, Nepal,
22 Mountain Research and Development 6(1):90-94, 1986.

23 Wahl, T. L.: Uncertainty of Predictions for Embankment Dam breach Parameters, Journal of
24 Hydraulic Engineering, 130(5), 389-397, 2004.

25 Wahl, T. L.: Dam Breach Modeling—An Overview Of Analysis Methods, Joint Federal
26 Interagency Conference on Sedimentation and Hydrologic Modeling, June 27 - July 1, Las
27 Vegas, NV, 2010.

- 1 Watanabe T., Kameyama, S., Sato, T.: Imja glacier dead-ice melt rates and changes in a supra-
2 glacial lake, 1989-1994, Khumbu Himal, Nepal: *Danger of lake drainage*, Mountain
3 Research and Development 15(4): 293–300, 1995.
- 4 Watanabe T., Lamsal, D., Ives, J. D.: Evaluating the growth characteristics of a glacial lake and
5 its degree of danger of outburst flooding: Imja glacier, Khumbu Himal, Nepal, Norsk
6 Geografisk Tidsskrift 63(4): 255–267, 2009.
- 7 Westoby, M. J., Glasser, N. F., Brasington, J., Hambrey, M. J., Quincey, D. J., Reynolds, J. M.:
8 Modelling outburst floods from moraine-dammed glacial lakes, *Earth Science Reviews*, doi:
9 10.1016/j.earscirev.2014.03.009, 2014.
- 10 Worni, R., Stoffel, M., Huggel C., Volz, C., Casteller, A., and Luckman B.: Analysis and
11 dynamic modeling of a moraine failure and glacier lake outburst flood at Ventisquero Negro,
12 Patagonian Andes (Argentina). *Journal of Hydrology* 444–445: 134–145. 2012.
- 13 WGMS-World Glacier Monitoring Service: Preliminary Glacier Mass Balance Data 2010/2011,
14 17 January 2013. (<http://www.wgms.ch/mbb/sum11.html>) accessed 10 March
15

1



2

3

4

Figure 1. Location of Imja Tsho in the Khumbu region of Nepal.



Figure 2. The village of Dingboche on the Imja Khola showing the river (right) and the relative height from the river course to the arable land and houses (about 22 m).



Figure 3. Bridge across the Dudh Koshi at the Star Lion Resort near the village of Phakding showing the bridge and the relative height from the river course to the arable land and houses (about 10 to 13 m).

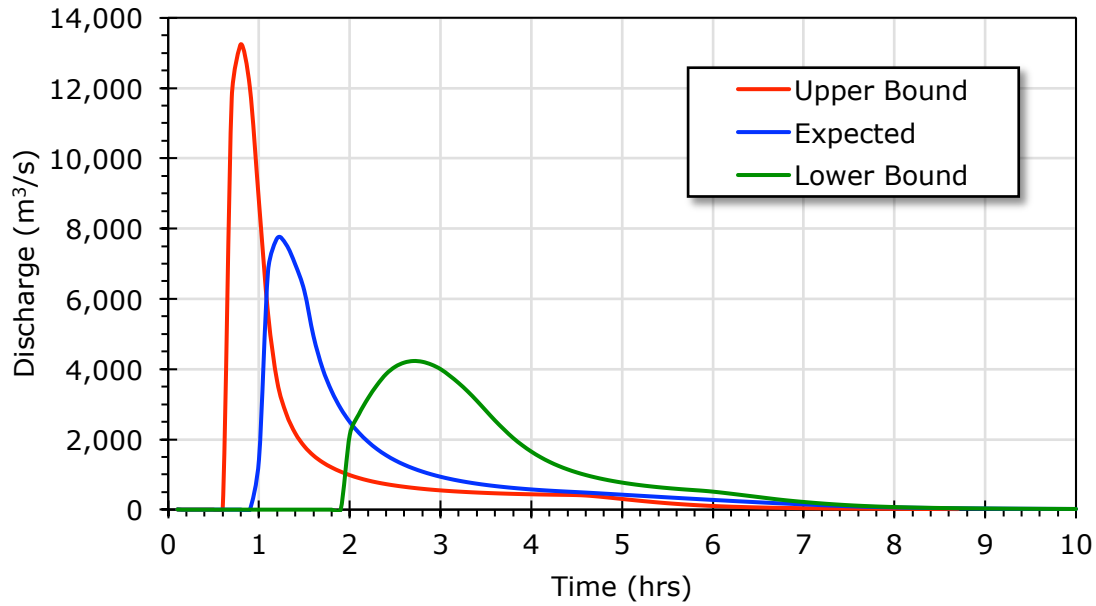


Figure 4. Upper bound, expected and lower bound GLOF hydrograph at Dingboche (cross section shown in Fig. 4) under current lake conditions.

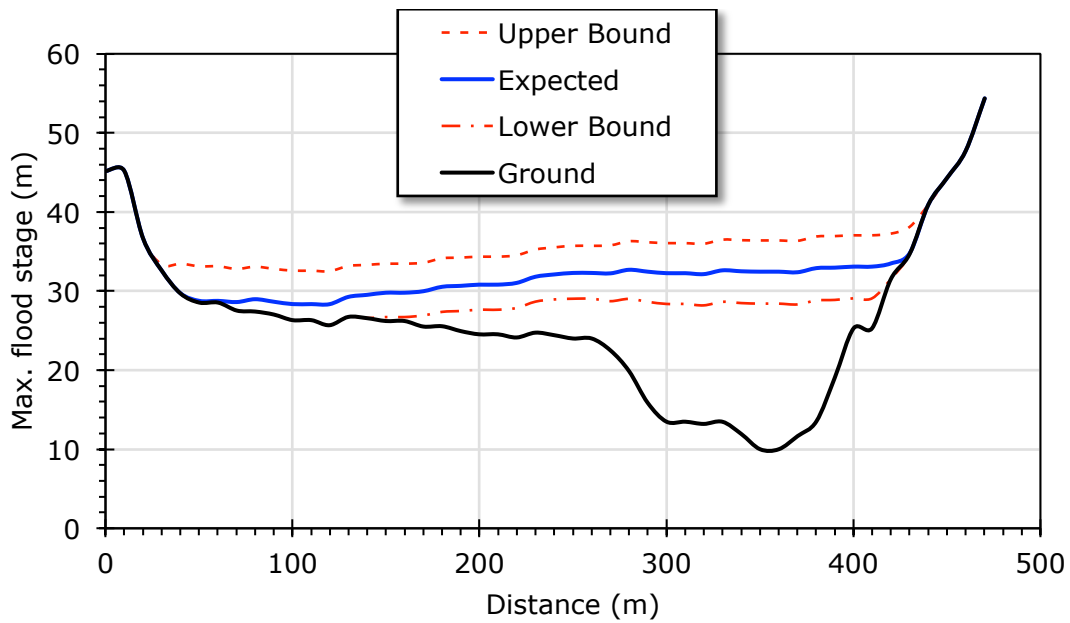
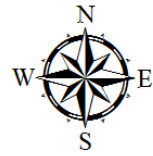


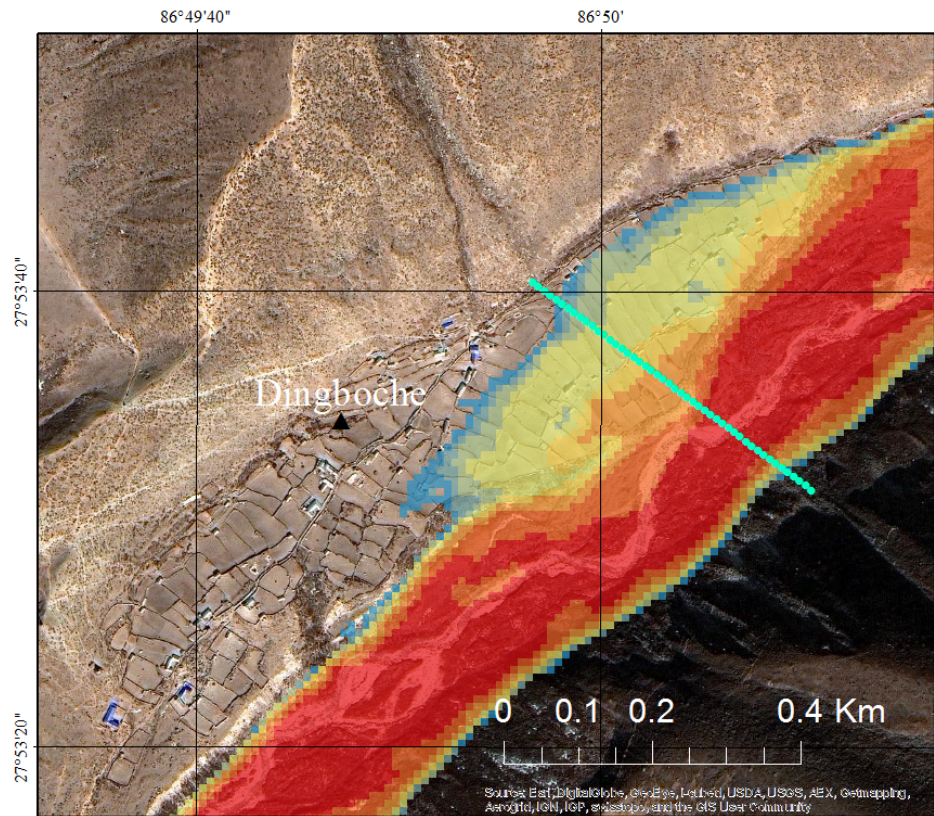
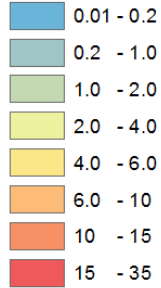
Figure 5. Upper bound, expected and lower bound GLOF flood stage at Dingboche (cross section shown in Figure 4) under current conditions .



Legend

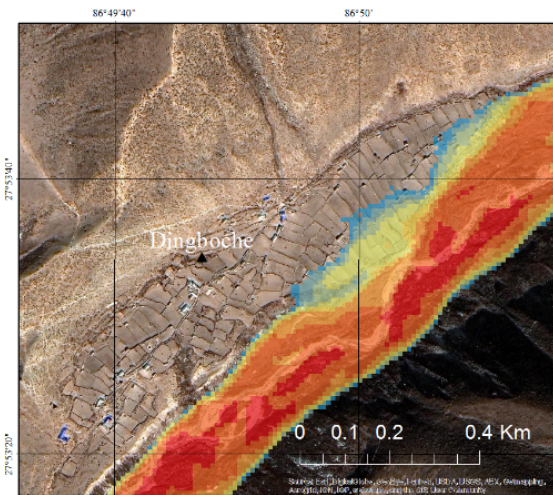
- ▲ Dingboche
- Crosssection

Depth Expected (m)



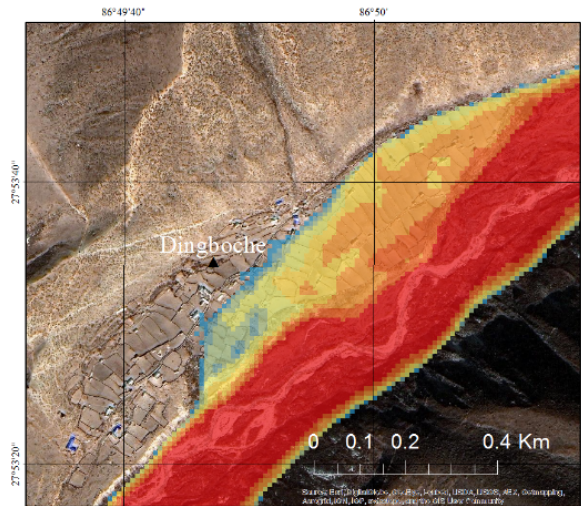
Coordinate System: WGS 1984 UTM zone 45N
Central Meridian: 87°00'E

1 (a)



Coordinate System: WGS 1984 UTM zone 45N
Central Meridian: 87°00'E

2 (b)

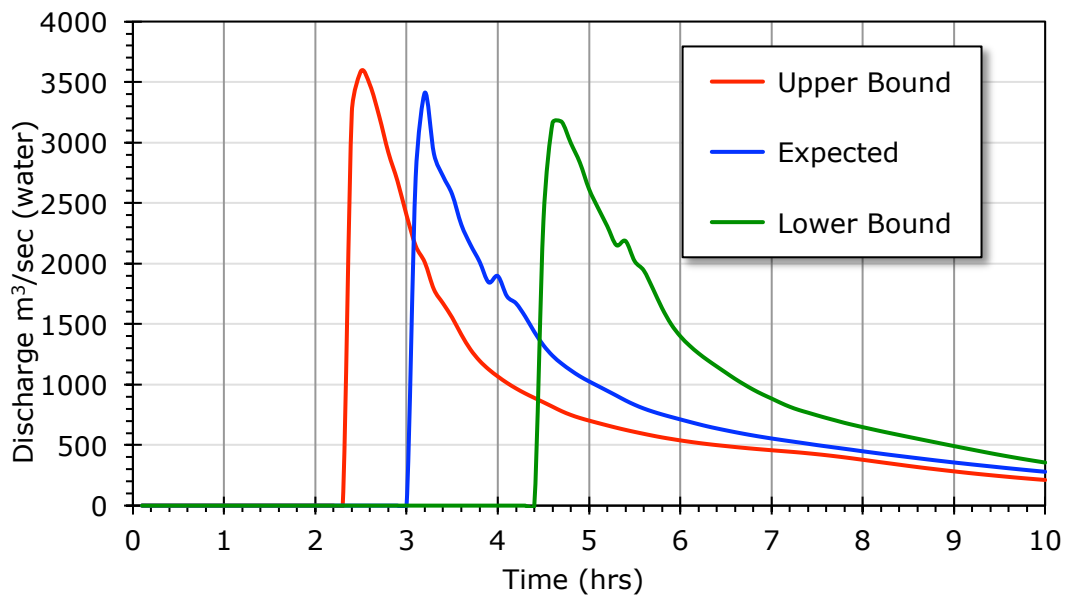


Coordinate System: WGS 1984 UTM zone 45N
Central Meridian: 87°00'E

(c)

Figure 6. Inundation at Dingboche under current lake conditions: (a) expected inundation and the location of the cross section where the different scenarios are compared; (b) lower bound; and (c) upper bound of the possible inundation.

1



2

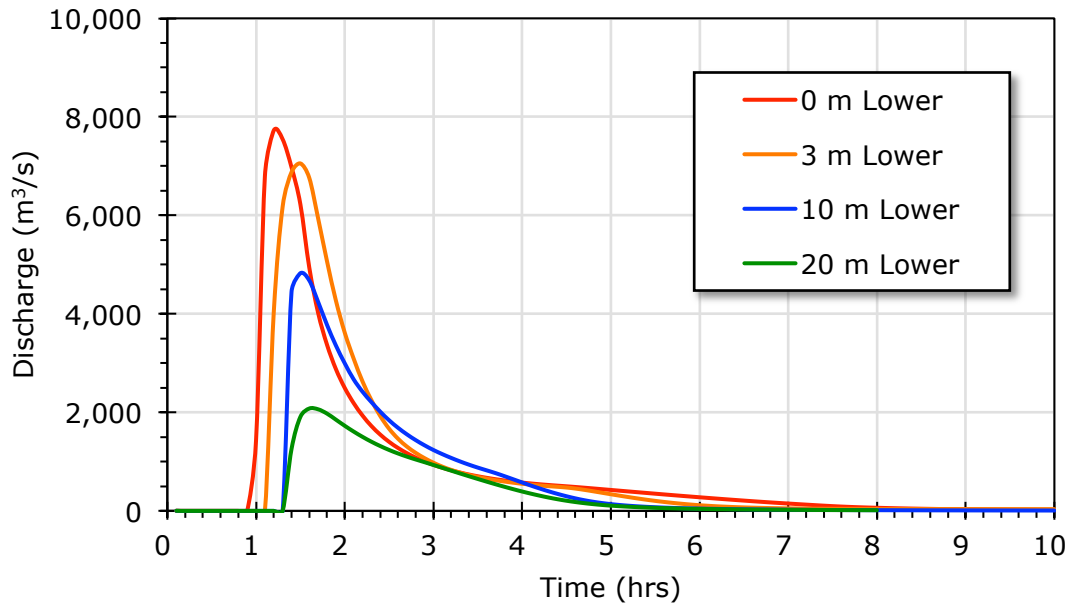
3 Figure 7. Upper bound, expected and lower bound GLOF hydrograph under current conditions at
4 Phakding.

5

6

7

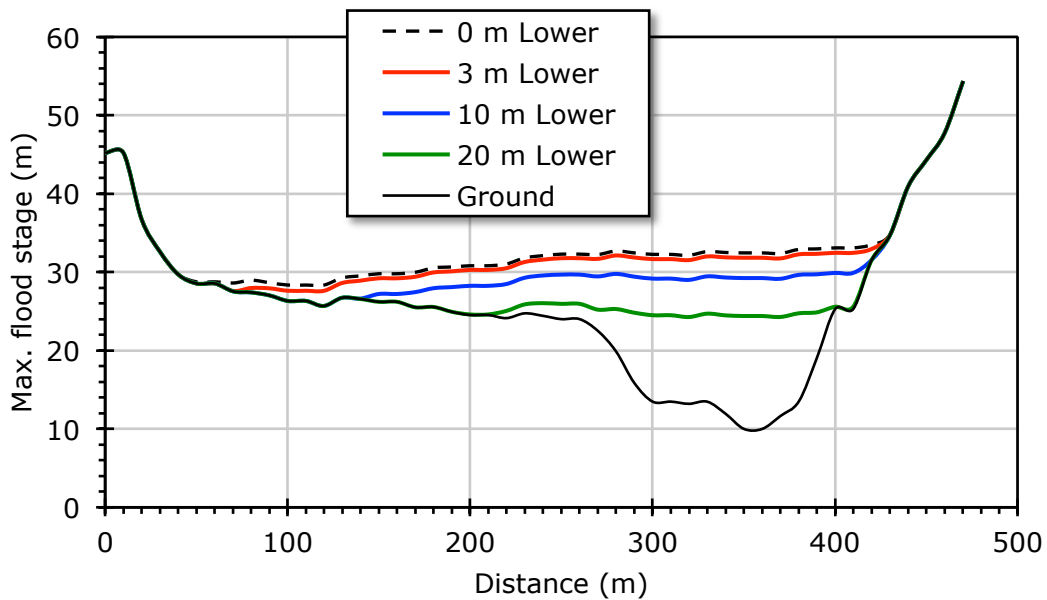
1



2

3 Figure 8. GLOF hydrographs at Dingboche under current lake conditions for 0 m, 3 m, 10 m and
4 20 m lake lowering scenarios.

5



6

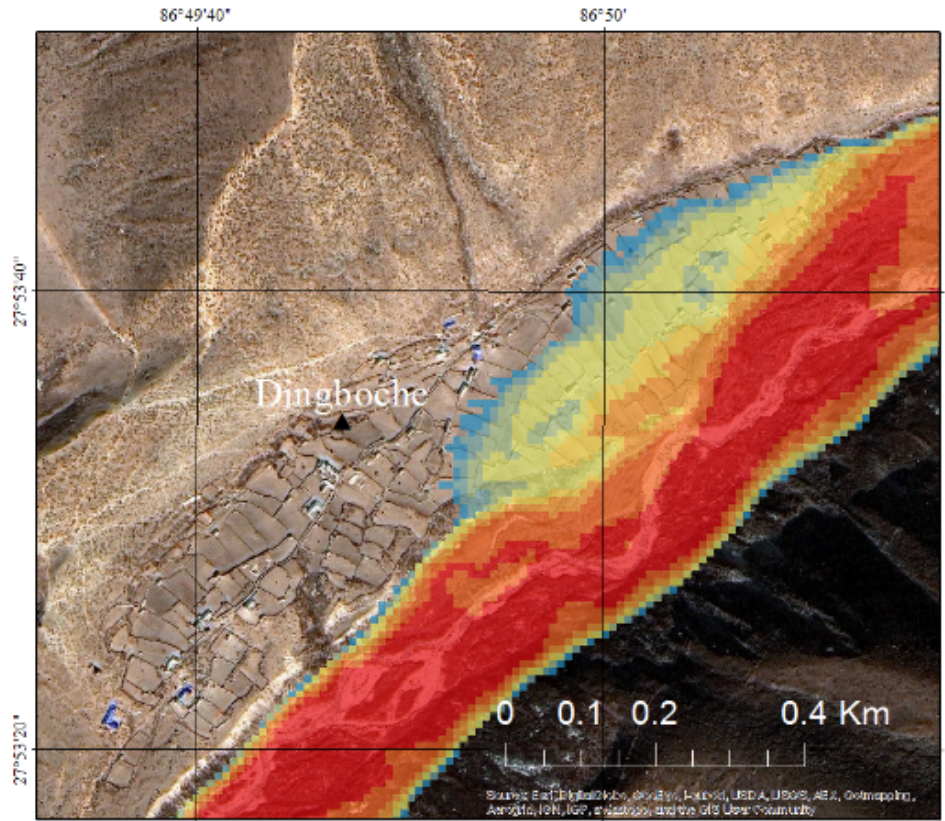
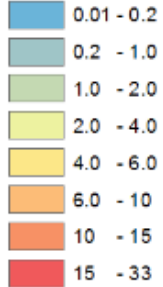
7 Figure 9. GLOF flood stage at Dingboche under current lake conditions for 0 m (Expected), 3 m,
8 10 m and 20 m lake lowering scenarios.



Legend

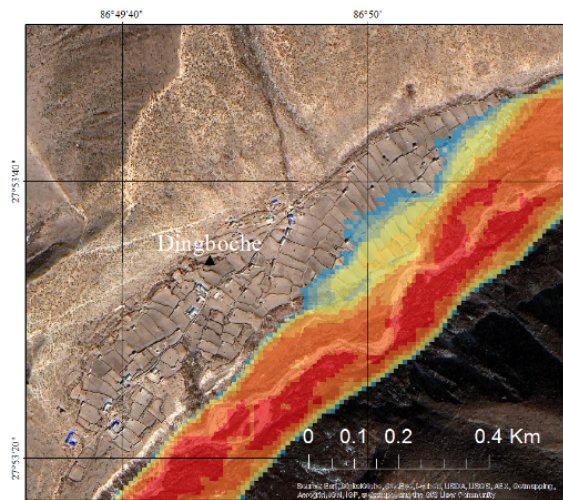
▲ Dingboche

Depth 3m Lower
(m)



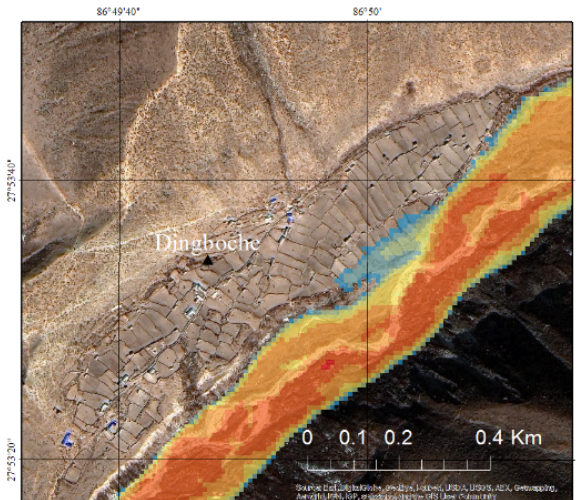
Coordinate System: WGS 1984 UTM zone 45N
Central Meridian: 87°00'E

1 (a)



Coordinate System: WGS 1984 UTM zone 45N
Central Meridian: 87°00'E

2 (b)



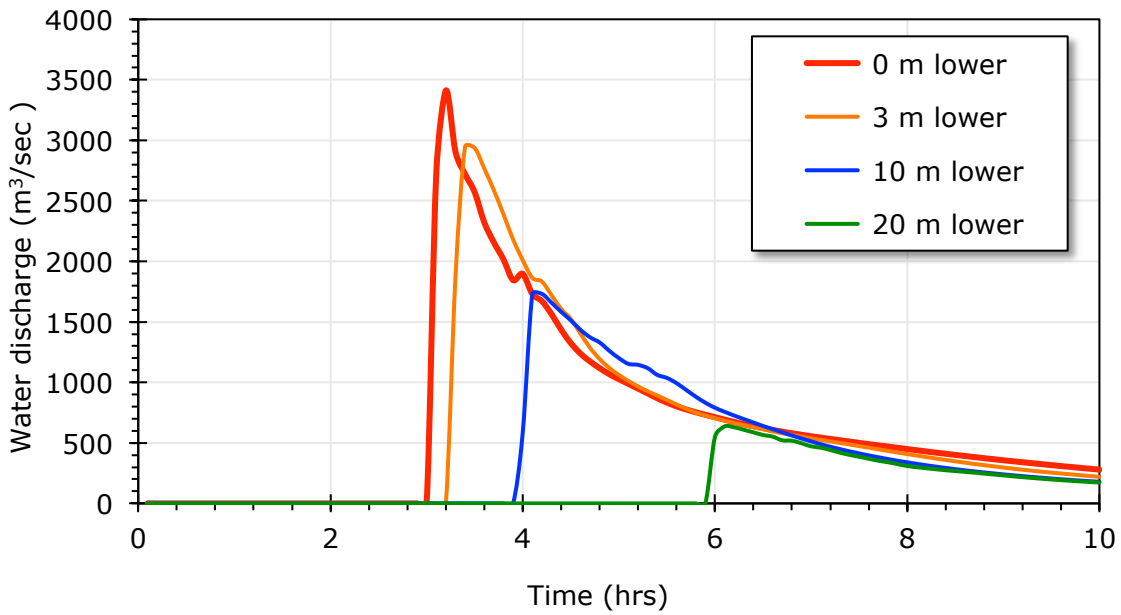
Coordinate System: WGS 1984 UTM zone 45N
Central Meridian: 87°00'E

(c)

3 Figure 10. Inundation depth at Dingboche under current lake conditions: (a) 3 m lake lowering;
4 (b) 10 m lake lowering; and (c) 20 m lake lowering.

5

1



2

3 Figure 11. GLOF hydrographs at Phakding under current conditions for 0 m, 3 m, 10 m and 20 m
4 lake lowering scenarios.

5

6

Table 1. Moraine Parameter Values Used in the Breaching Equations.

Parameter	Scenario			
	Current conditions	Lake lowering		
		3 m	10 m	20 m
Moraine height (h_d , m)	35	32	25	15
Breach height (h_b , m)	35	32	25	15
Water height (h_w , m)	35	32	25	15
Water volume above breach invert (V_w , million m ³)	33.5	29.5	22.4	12.5

Table 2. Prediction Error and Uncertainty Bands for the Froehlich Breaching Equations.

Parameter	Mean prediction error (e)	uncertainty band ($\pm 2Se$)
Breach width (B , m)	0.01	± 0.39
Failure time (t_f , hr)	-0.22	± 0.64
Peak discharge (Q_p , m ³ /s)	-0.04	± 0.32

1 Table 3. Breach Parameter Expected Values and Uncertainty Bands for Four Scenarios.

Scenario	Value type	Breach width B (m)	Failure time t_f (hr)	Peak discharge Q_p (m ³ /s)
Current conditions	Lower bound	36	0.38	4342
	Predicted	91	1.01	8274
	Upper bound	218	7.32	18955
Lower 3 m	Lower bound	34	0.39	3742
	Predicted	86	1.02	7131
	Upper bound	206	7.39	16336
Lower 10 m	Lower bound	30	0.42	2539
	Predicted	75	1.1	4838
	Upper bound	180	7.97	11083
Lower 20 m	Lower bound	22	0.49	1135
	Predicted	56	1.28	2163
	Upper bound	134	9.27	4955

2

3

1 Table 4. Inundation Model Expected Values and Uncertainty Bands at Imja Tsho, Dingboche
 2 and Phakding for Current Lake Conditions.

Station	Value	Arrival time (hr)	Peak time (hr)	Peak discharge (m ³ /s)	Peak stage (m)
Below Imja Tsho	Lower bound	0.8	2.3	4272	12.1
	Predicted	0.3	1.0	8394	16.6
	Upper bound	0.2	0.5	19000	33.4
Dingboche	Lower bound	1.9	2.8	4208	18.4
	Predicted	1.0	1.3	7544	22.4
	Upper bound	0.6	0.8	13248	26.4
Phakding	Lower	4.4	4.7	3171	
	Predicted	3.1	3.2	3412	
	Upper	2.4	2.6	3473	

3

4

- 1 Table 5. Inundation Model Results at Dingboche and Phakding for Lake Lowering Scenarios
- 2 Under Current Conditions.

Lake lowering scenario (m)	Arrival time (hr)	Peak time (hr)	Peak discharge (m ³ /s)	Peak discharge reduction* (%)	Peak depth (m)	Peak depth reduction* (%)	Farm area inundated (m ²)	Buildings inundated (#)
Dingboche								
0	1.0	1.3	7544	0	22.4	0	93650	29
3	1.1	1.5	7053	6.5	21.8	2.7	86262	25
10	1.3	1.6	4479	40.6	19.2	14.3	40226	18
20	1.3	1.8	1975	73.8	14.4	35.9	10686	0
Phakding								
0 m	3.1	3.2	3412	0				
3 m	3.2	3.5	2937	13.9				
10 m	3.9	4.2	1730	49.3				
20 m	5.8	6.1	629	81.8				

- 3 * Relative to the peak value for 0 m lake lowering.

4