



**Modeling convective
rainfall sensitivity to
climate change**

N. Peleg et al.

[Title Page](#)

[Abstract](#)

[Introduction](#)

[Conclusions](#)

[References](#)

[Tables](#)

[Figures](#)



[Back](#)

[Close](#)

[Full Screen / Esc](#)

[Printer-friendly Version](#)

[Interactive Discussion](#)



This discussion paper is/has been under review for the journal Hydrology and Earth System Sciences (HESS). Please refer to the corresponding final paper in HESS if available.

A framework for assessing hydrological regime sensitivity to climate change in a convective rainfall environment: a case study of two medium-sized eastern Mediterranean catchments, Israel

N. Peleg¹, E. Shamir², K. P. Georgakakos^{2,3}, and E. Morin⁴

¹Hydrology and Water Resources Program, Hebrew University of Jerusalem, Givat Ram, Jerusalem 91904, Israel

²Hydrologic Research Center, San Diego, California, USA

³Scripps Institution of Oceanography, University of California San Diego, La Jolla California, USA

⁴Department of Geography, Hebrew University of Jerusalem, Jerusalem 91905, Israel

Received: 14 July 2014 – Accepted: 3 September 2014 – Published: 23 September 2014

Correspondence to: N. Peleg (nadav.peleg@mail.huji.ac.il)

Published by Copernicus Publications on behalf of the European Geosciences Union.

Abstract

A modeling framework is formulated and applied to assess the sensitivity of the hydrological regime of two catchments in a convective rainfall environment with respect to projected climate change. The study uses likely rainfall scenarios with high spatiotemporal resolution that are dependent on projected changes in the driving regional meteorological synoptic systems. The framework was applied to a case study in two medium-sized Mediterranean catchments in Israel, affected by convective rainfall, by combining the HiReS-WG rainfall generator and the SAC-SMA hydrological model. The projected climate change impact on the hydrological regime was examined for the RCP4.5 and RCP8.5 emission scenarios, comparing the historical (beginning of the 21st century) and future (mid-21st-century) periods from three General Circulation Models simulations available from CMIP5. Focusing on changes in the occurrence frequency of regional synoptic systems and their impact on rainfall and streamflow patterns, we find that the mean annual rainfall over the catchments is projected to be reduced by 15 % (range 2–23 %) and 18 % (7–25 %) for the RCP4.5 and RCP8.5 emission scenarios, respectively. The mean annual streamflow volumes are projected to be reduced by 45 % (10–60 %) and 47 % (16–66 %). The average events' streamflow volumes for a given event rainfall depth are projected to be lower by a factor of 1.4–2.1. Moreover, the streamflow season in these ephemeral streams is projected to be shorter by 22 % and 26–28 % for the RCP4.5 and RCP8.5, respectively. The amplification in reduction of streamflow volumes relatively to rainfall amounts is related to the projected reduction in soil moisture, as a result of fewer rainfall events and longer dry spells between rainfall events during the wet season. The dominant factors for the projected reduction in rainfall amount were the reduction in occurrence of wet synoptic systems and the shortening of the wet synoptic systems durations. Changes in the occurrence frequency of the two dominant types of the regional wet synoptic systems (Active Red Sea Trough and Mediterranean low) were found to have a minor impact on the total rainfall.

Modeling convective rainfall sensitivity to climate change

N. Peleg et al.

[Title Page](#)

[Abstract](#)

[Introduction](#)

[Conclusions](#)

[References](#)

[Tables](#)

[Figures](#)



[Back](#)

[Close](#)

[Full Screen / Esc](#)

[Printer-friendly Version](#)

[Interactive Discussion](#)



1 Introduction

Rainfall spatial and temporal variability plays a major role in the hydrological response of catchments affecting runoff timing, streamflow volume, and peak discharge (Morin et al., 2006; Morin and Yakir, 2014; Paschalis et al., 2014; Rozalis et al., 2010; Singh, 1997). The role of rainfall variability is even greater in climate regimes where a substantial portion of rainfall is convective and runoff is sensitive to this type of rainfall (Morin and Yakir, 2014; Peleg and Morin, 2014; Rozalis et al., 2010; Smith et al., 2000; Yakir and Morin, 2011). The hydrological response was found to be sensitive to rainfall spatial variability in very small catchments (Bahat et al., 2009, less than 1 km^2), in catchments of few dozen km^2 (Zoccatelli et al., 2011) and larger catchments (Arnaud et al., 2011, $> 100 \text{ km}^2$). It is therefore essential to use rainfall data with high spatial and temporal resolution for hydrological modeling purpose. Such resolution can be provided for small and medium sized catchments by weather radar data (e.g., 1.5 km^2 and 3 min, Peleg et al., 2013) and for large catchments by satellite data (e.g., Nikolopoulos et al., 2010; Shamir et al., 2013).

General Circulation Models (GCMs) used for climate studies and climate projections have coarser spatial and temporal resolution than usually required for hydrological simulations. For example, most GCM simulations that are available from the Coupled Model Intercomparison Project Phase 5 (CMIP5) have a spatial scale larger than $10\,000 \text{ km}^2$ and monthly- to- 6 h reporting intervals (an extensive overview of CMIP5 is given by Moss et al., 2010 and Taylor et al., 2012), which is inadequate to serve as input for catchment scale hydrologic modeling.

To generate GCM-forced rainfall input with spatial and temporal scales that are appropriate for catchment scale hydrologic modeling, dynamical and statistical downscaling methods were developed (e.g., Fowler et al., 2007; Hewitson and Crane, 1996; Wilby and Wigley, 1997). Dynamical downscaling uses output from the GCM as boundary conditions for a nested Regional Circulation Model (RCM) with higher spatial and temporal resolution that accounts for local and regional climate processes and

HESSD

11, 10553–10592, 2014

Modeling convective rainfall sensitivity to climate change

N. Peleg et al.

Title Page

Abstract

Introduction

Conclusions

References

Tables

Figures



Back

Close

Full Screen / Esc

Printer-friendly Version

Interactive Discussion



orographic influences. Due to the significant computational time involved, dynamical downscaling efforts often yield a single downscaled realization of physically consistent input vectors for hydrologic modeling (e.g., downscaling 30 years of GCM data produces a single 30 year simulation). This approach often requires bias adjustment for the downscaled high resolution fields and/or for the resultant streamflow (Georgakakos et al., 2012a).

A less computationally intensive approach uses statistical downscaling of the GCM fields. In statistical downscaling, statistical relationships are formed between local observations (e.g., temperature or rainfall intensity at ground gauges) and large scale atmospheric variables simulated by the GCMs (e.g., sea level pressure or specific humidity). This downscaling method permits the incorporation of changes in the mean and variability of climate in a statistically consistent and computationally inexpensive way (Semenov and Barrow, 1997). It does however, simplify the large-to-small scale process dynamics and arrives at relationships for such dynamics that are calibrated based on the historical climate. Statistical downscaling is often integrated with a weather generator (WG), which is a stochastic model that simulates a likely weather time series realizations that are based on statistical analysis of observed local data (Wilks and Wilby, 1999). In contrast to dynamical downscaling, an ensemble of many realizations can be generated to represent the statistical properties of the weather. Statistical downscaling is used in this work as a first step to understand the sensitivity of the hydrologic regime to climate change.

WG can be used to generate rainfall that represents different statistical characteristics of the regional synoptic systems (e.g., Robertson et al., 2004, statistically downscaled rainfall occurrence in Northeast Brazil; Kioutsioukis et al., 2008, downscaled rainfall in Greece; Shamir et al., 2014b used WG in Southern Arizona). In these cases, however, the rainfall was generated with a daily temporal resolution for point locations. Two WG models that were recently presented by Paschalis et al. (2013) and Peleg and Morin (2014), simulate rainfall in small spatial and a much higher temporal resolution (4 km^2 and 5 min and 0.25 km^2 and 5 min,

HESSD

11, 10553–10592, 2014

Modeling convective rainfall sensitivity to climate change

N. Peleg et al.

[Title Page](#)

[Abstract](#)

[Introduction](#)

[Conclusions](#)

[References](#)

[Tables](#)

[Figures](#)



[Back](#)

[Close](#)

[Full Screen / Esc](#)

[Printer-friendly Version](#)

[Interactive Discussion](#)



respectively). This is a resolution that is adequate for hydrological modeling of small size (less than 50 km²) catchments assuming reliable rainfall estimates (Borga et al., 2014). The latter rainfall generator model (High Resolution Synoptically Conditioned Weather Generator [HiReS-WG], Peleg and Morin, 2014) which is used in this study, is unique in that it was designed to capture convective characteristics in a climate regime that is dominated by convective rainfall.

In this study we present a modeling framework to assess projected climate impact on the hydrological regime by generating high spatiotemporal resolution rain fields with statistics that are depended on the regional meteorological synoptic systems (Fig. 1). To exemplify the presented modeling framework, two medium sized catchments in Israel were selected for a case study. Section 2 presents the suggested modeling framework and Sect. 3 describes the case study. The projected rainfall and runoff changes are presented in Sect. 4 and discussion and conclusions are in Sect. 5.

2 A framework for assessing the sensitivity of the hydrologic regime to climate change

A framework for assessing the sensitivity of the hydrologic regime to climate change is presented on the left side of Fig. 1 and the framework's steps are listed in the following. First, using reanalysis data, a synoptic classification is performed to determine the regional synoptic system prevalent during rainfall events and its occurrence frequency for the historical climate record. Second, a historical record of remotely sensed rainfall estimate is used to derive the relevant rainfall spatiotemporal statistical properties for each synoptic system. Third, based on the first and second steps, the WG is used to generate an ensemble of likely rainfall realizations that represents the historical climate. Fourth, the GCM synoptic variables are bias corrected to match the synoptic variables derived from the reanalysis data during the analyzed historic period, and projected changes in the occurrence frequency of future synoptic systems are then estimated from the bias corrected GCM. Fifth, the WG is used to generate an ensemble of likely

Modeling convective rainfall sensitivity to climate change

N. Peleg et al.

Title Page

Abstract

Introduction

Conclusions

References

Tables

Figures



Back

Close

Full Screen / Esc

Printer-friendly Version

Interactive Discussion



rainfall scenarios that represent the occurrence frequency of the GCM's projected synoptic systems. Sixth, the historic and projected synthetic rainfall ensembles are used as input to a hydrologic model to assess the sensitivity of the hydrologic regime to climate change.

5 This framework is adequate for regions that experience rainfall from distinctively different synoptic systems that can be represented by uniquely identified statistical indices. In such regions, not only the effect of changes in total amounts of rainfall, but also the effect of changes in occurrence frequency of the synoptic systems that cause rainfall should be examined. A high correspondence between annual amounts
10 of rainfall and the occurrence frequency of wet synoptic systems was found for the study region (Saaroni et al., 2010). Therefore, the proposed framework focuses on the change in projected future rainfall that resulted from changes in the occurrence frequency of the regional wet synoptic systems. The effect of projected changes in rainfall spatiotemporal characteristics was not examined in this study because future
15 projections with the adequate skill and resolution that are required for such assessment are not yet available for the application area.

3 The case study of the Dalya and Taninim catchments

The framework discussed in the previous section was applied to the upper Dalya and upper Taninim catchments. We focused on the projected change in rainfall and streamflow volumes by comparing the beginning of the 21st century (historical period; 1996–2005) to mid-21st century (future period; 2046–2055). To achieve this goal the following methods and models (Fig. 1, left side in italic) were used: (1) a synoptic classification was carried out using the NCEP/NCAR reanalysis data, (2) convective rainfall space–time characterization and the associated empirical distributions per
20 synoptic system were computed using data from the Shacham–Mekorot weather radar, (3) selected GCM simulations from CMIP5 were bias corrected and changes in the occurrence frequency of the synoptic systems between the historical and future
25

Modeling convective rainfall sensitivity to climate change

N. Peleg et al.

[Title Page](#)

[Abstract](#)

[Introduction](#)

[Conclusions](#)

[References](#)

[Tables](#)

[Figures](#)



[Back](#)

[Close](#)

[Full Screen / Esc](#)

[Printer-friendly Version](#)

[Interactive Discussion](#)



periods were estimated, (4) rainfall ensembles with convective features for current and projected climate were generated by the HiReS-WG; and (5) the streamflow in the catchments' outlets was simulated using the Sacramento Soil Moisture Accounting Model (SAC-SMA).

3.1 Study Area

The upper Dalya (Bat Shlomo hydrometric station, 42 km²) and upper Taninim (Amiqam hydrometric station, 47 km²) catchments are located in the Ramot Menashe region, northwestern Israel (Fig. 1, right side). The terrain near the catchments outlets is mostly flat, ascending moderately eastward up to 380 m a.s.l. Both upper Dalya and upper Taninim are ephemeral streams, similar in size but slightly different in their geologic formation and soil cover. Adulam Formation, dated to the lower Eocene and composed mainly of limestone and chalk, cover most of the drainage area of the upper Dalya catchment. This formation covers also large parts of the upper Taninim catchment, while the highest parts of the catchment consist of older (Paleocene) Taqiye Formation, composed mainly of chalk and marl. The area is mostly cultivated agriculture that has experienced a severe soil erosion in the last several decades. The soil thickness varies between 240 and 340 mm for the upper Dalya catchment and between 240 and 500 mm for the upper Taninim catchment. In both catchments the soil is classified as Rendzina with clay texture in the top soil. The lithology of the upper parts of Dalya and Taninim catchments is concordant with other areas of the Ramot Menashe region (Grodek et al., 2012).

The region has a Mediterranean climate with wet winters (October–May) and dry and hot summers (June–September). The annual rainfall is highly variable with rainfall exceeded 1000 mm in the wettest observed year (1991/1992), while less than 400 mm was recorded in driest observed year (1981/1982). A considerable number of rainfall events in this area are caused by convective processes (Peleg and Morin, 2014). Records of rainfall and streamflow exist for these catchments from a weather radar, rain gauges, and hydrometric stations (a summary of available data is in Table 1).

Modeling convective rainfall sensitivity to climate change

N. Peleg et al.

[Title Page](#)

[Abstract](#)

[Introduction](#)

[Conclusions](#)

[References](#)

[Tables](#)

[Figures](#)

[⏪](#)

[⏩](#)

[◀](#)

[▶](#)

[Back](#)

[Close](#)

[Full Screen / Esc](#)

[Printer-friendly Version](#)

[Interactive Discussion](#)



Following a rigorous quality control assessment, data for twelve hydrological years (1 October–30 September) were compiled for this study (i.e. 1991/1992–1997/1998, 1999/2000–2002/2003 and 2004/2005).

3.2 Rainfall patterns and synoptic classification

The wet synoptic systems (i.e., synoptic systems that might lead to rainfall over the catchments) and their rainfall statistics were studied for the northern coastal region of Israel by Peleg and Morin (2012, 2014). A summary of their findings that is relevant to this study follows.

The wet synoptic systems were classified using the NCEP/NCAR meteorological reanalysis data (Kalnay et al., 1996), extracted for the nearest location available to the catchments (35° E 32.55° N, Fig. 1). The grid cell is located offshore; approximately extending from the northern Israel coastline to Cyprus. The above-mentioned 12 years of data were examined and 882 6 h intervals with rainfall over the catchments observed by the weather radar were identified. The synoptic classification during these periods was performed using a cluster analysis technique that considers four variables from the reanalysis data: (1) sea level pressure, (2) specific humidity at 700 hPa, (3) geopotential height at 500 hPa; and (4) zonal wind at 850 hPa. Initially, three wet synoptic systems classes were identified (Peleg and Morin, 2012). However, the first two were merged into one synoptic class – known as the Mediterranean low (ML), an extratropical cyclone, see Fig. 1). The ML is the prevailing synoptic system that generates rainfall over the study region (Alpert et al., 2004; Peleg et al., 2014; Peleg and Morin, 2012; Saaroni et al., 2010). The second synoptic system (Fig. 1) was linked to the Active Red Sea Trough (ARST), which occurs mainly during the transition seasons (Tsvieli and Zangvil, 2005) and mainly affects the southern and eastern parts of Israel (Kahana et al., 2002). The ARST is defined as a sea-level trough that extends from eastern Africa along the Red Sea towards the Mediterranean (Ashbel, 1938). The cluster analysis classified 94% (6%) of the wet synoptic systems in the study area as ML (ARST) (Peleg and Morin, 2012).

Modeling convective rainfall sensitivity to climate change

N. Peleg et al.

Title Page

Abstract

Introduction

Conclusions

References

Tables

Figures



Back

Close

Full Screen / Esc

Printer-friendly Version

Interactive Discussion



Modeling convective rainfall sensitivity to climate change

N. Peleg et al.

[Title Page](#)[Abstract](#)[Introduction](#)[Conclusions](#)[References](#)[Tables](#)[Figures](#)[⏪](#)[⏩](#)[◀](#)[▶](#)[Back](#)[Close](#)[Full Screen / Esc](#)[Printer-friendly Version](#)[Interactive Discussion](#)

Empirical distributions that describe the rainfall statistics during ML and ARST events were derived from analysis of 191 586 radar volume scans of the C-band Shacham (EMS) Mekorot weather radar system, located ~ 60 km south of the study area (Peleg and Morin, 2012). The convective features were spatially determined using a segmentation method and temporally analyzed using a rain cell tracking algorithm. The empirical distributions include for example: the number of convective rain cells per 5 min, their areal extent, maximal and areal mean of rain intensity, orientation and advection properties, the low-intensity rainfall area, and mean rainfall intensity (Peleg and Morin, 2012, 2014). In addition to the radar data, a dense rain-gauge network in a 4 km^2 plot located in the upper Taninim catchment was used to assess the small scale rainfall spatial correlation at the sub-grid resolution (Peleg et al., 2013).

3.3 Climate change projection using CMIP5 models

The Coupled Model Intercomparison Project Phase 5 (CMIP5, see Moss et al., 2010 and Taylor et al., 2012 for more details) simulations were used to compare the wet synoptic systems' occurrence between the historical (beginning of the 21st century) and future (mid-21st-century) periods. The analyzed simulations were obtained from models with 6 h temporal resolution that correspond with the NCEP/NCAR reanalysis, and for two of the IPCC Assessment Report 5 emission scenarios: (1) the high-emission scenario (RCP8.5); and (2) a midrange-mitigation-emission scenario (RCP4.5). Peleg et al. (2014) present synoptic system classification and occurrence frequency related to each system for the eastern Mediterranean based on NCEP/NCAR reanalysis and GCMs for the two selected scenarios. A quantile-quantile bias correction was applied for the meteorological variables of the CMIP5 models, using the NCEP/NCAR reanalysis data as a reference for the corrections. For the current analysis three GCM CMIP5 models were selected: HadGEM2-ES, GFDL-ESM2G and BCC-CSM1.1. These GCMs were selected because of their 6 h temporal resolution, the close proximity of the pixels from which the models' meteorological variables were derived to the study region (Table 2), and the relatively good representation of synoptic

systems occurrence frequency by these models (Fig. 2). It was found that: rain in the region will become less frequent because of a reduction in the occurrence frequency of wet synoptic systems, the wet season period (i.e., the period from the first to last rainy day in the year) will be shortened mainly from the ending of the wet season and the occurrence frequency of ARST will increase at the expense of the ML; the magnitudes of the above changes for each GCM and emission scenario are summarized in Table 3 (see a detailed analysis and discussion by Peleg et al., 2014).

Based on the above analyses two scenarios of projected synoptic system frequency change were examined here. RCP4.5 scenario: the wet season period was projected to be shortened by 6.5% from its ending, the occurrence of wet synoptic systems was projected to be reduced by 16%, and the occurrence of ARST was projected to increase by 4.25% at the expense of the ML. RCP8.5 scenario: the wet season period was projected to be shortened by 9.5% from its ending, the occurrence of wet synoptic systems was projected to be reduced by 16%, and the occurrence of ARST was projected to increase by 8.5% at the expense of the ML. These two projections were combined subjectively from the changes found for each GCM (Table 3) giving some higher weights to higher values of change found.

3.4 HiReS-WG

The High Resolution Synoptically conditioned Weather Generator (HiReS-WG) is a stochastic model that generates rain fields with a substantial proportion of convective features (Peleg and Morin, 2014). The HiReS-WG generates rain fields based on the empirical distributions of the rainfall characteristics subjected to the classified wet synoptic system. The rain fields were generated for the catchments in a spatial resolution of 0.25 km^2 (see Fig. 1 lower right side) and a temporal resolution of 5 min. This is a sufficiently high spatiotemporal resolution that can be adequately used to simulate the hydrological response of the studied catchments. An ensemble of 300 years of likely rainfall realizations that represents the historical period was generated. The ensemble was further divided into ten series of 30 years each, in order

Modeling convective rainfall sensitivity to climate change

N. Peleg et al.

[Title Page](#)

[Abstract](#)

[Introduction](#)

[Conclusions](#)

[References](#)

[Tables](#)

[Figures](#)

[⏪](#)

[⏩](#)

[◀](#)

[▶](#)

[Back](#)

[Close](#)

[Full Screen / Esc](#)

[Printer-friendly Version](#)

[Interactive Discussion](#)



to assess the inter- and intra-annual variability of the rainfall. In addition, ensembles were generated for the future period for each scenario and were also similarly divided into 10 data series, representing the projected changes in the occurrence of the wet synoptic systems, as discussed above.

5 3.5 SCA-SMA hydrological model

The Sacramento Soil Moisture Accounting Model (SAC-SMA) is a conceptual, continuous, and aerial-lumped model that describes the wetting and drying processes in the soil. A detailed description of the continuous-time form formulation of the model that was implemented in this study as described by Georgakakos (1986). The SAC-SMA robustness was demonstrated by the results of the Distributed Modeling Intercomparison Project (Reed et al., 2004; Smith et al., 2004) and this model is used in many operational setups for various water resources management and flood warning practices. In recent years the SAC-SMA was also used in various climate change impact studies (e.g., Georgakakos et al., 2012a; 2012b, for water resources planning, Northern California; Carpenter, 2011, for flashflood frequency, Southern California; Kerkhoven and Gan, 2011, in the Fraser River and Athabasca River Basin, Canada; Koutroulis et al., 2013, for water resources in the island of Crete, Greece; Kwon et al., 2011, for flood frequency, Soyang Dam South Korea; and Najafi et al., 2011, in the Tualatin River Basin in Oregon, USA).

The development of the SAC-SMA model for the study area is detailed in Shamir et al. (2014a) and a short summary is provided below. The model was calibrated for the hydrometric stations of Bat Shlomo (upper Dalya catchment) and Amiqam (upper Taninim catchment; Fig. 1). The rainfall data are from the Shacham (EMS) Mekorot weather radar system for a period of 12 years (mentioned above). Daily rainfall data from 26 rain gauges within 100 km distance from the radar were used for the radar-gauge adjustment and another 13 rain gauges in the surroundings of the Dalya and Taninim catchments were used for validation (Peleg and Morin, 2012). Rainfall data were initially calculated using the weather radar reflectivity data

Modeling convective rainfall sensitivity to climate change

N. Peleg et al.

[Title Page](#)

[Abstract](#)

[Introduction](#)

[Conclusions](#)

[References](#)

[Tables](#)

[Figures](#)



[Back](#)

[Close](#)

[Full Screen / Esc](#)

[Printer-friendly Version](#)

[Interactive Discussion](#)



Modeling convective rainfall sensitivity to climate change

N. Peleg et al.

[Title Page](#)[Abstract](#)[Introduction](#)[Conclusions](#)[References](#)[Tables](#)[Figures](#)[Back](#)[Close](#)[Full Screen / Esc](#)[Printer-friendly Version](#)[Interactive Discussion](#)

by applying a fixed reflectivity-rainfall power law relationship and then readjusted for each year using the weighted regression method (Gabella et al., 2001; Morin and Gabella, 2007). The model was constructed for four and five sub-basins for the upper Dalya and upper Tananim catchments, respectively. The rainfall input to the model was spatially aggregated to reflect mean areal values for these sub-basins. Initial SAC-SMA parameter values were estimated using field survey soil data and GIS layers of terrain, soil, and lithology. The SAC-SMA model was implemented to run in 5 min intervals, which is the native resolution of the radar data and the output of the HiReS-WG and is adequate because of the small sub-basins size and their rapid response time. The model was calibrated to capture the general hydrologic regime rather than to simulate the peak and the timing of a specific flow event. The SAC-SMA model was set to run continuously in 5 min intervals for each year from 1 October to 31 May, where for each year the initial conditions of the soil components were set to dry conditions (~ 1 % of saturation).

Comparing the observed average mean areal rainfall over the hydrometric stations drainage area with the streamflow indicate that initial cumulative rainfall is required in the beginning of the rainy season before measurable streamflow is recorded in the stations. Note that even very intense and long rainfall events in the beginning of the wet season (e.g., 1991/1992 and 1994/1995) did not generate measurable streamflow at the stations. The SAC-SMA model structure was modified to include an initial loss reservoir that starts empty every year (1 October) and has to be satisfied first before the rainfall is applied as input to the rest of the SAC-SMA model components.

The SAC-SMA simulations match the observed annual volumes at the hydrometric stations of the upper Dalya and upper Tananim catchments (Fig. 3a and b), with high R^2 values (0.89 and 0.94, respectively) for the linear fit (slope of 0.96 and 0.95, respectively). To examine the fit at the event level we defined rain and streamflow events as follows: a rain event begins when rain first appears over the catchment and ends when there is a dry spell intermission that exceeds three hours before the next pulse of rain occurs; a rain event is being accounted for only if its mean areal rainfall

exceeds 10 mm. A streamflow event begins when a corresponding rain event begins and ends either when a new rain event begins or after 720 h. An example is shown in Fig. 4 for a two weeks period in January 1991 for the upper Dalya catchment. The SAC-SMA simulates the events streamflow volumes reasonably well (Fig. 3c and d), with an acceptable slope of the linear fit between observed and calculated data of 0.76 for the upper Dalya catchment and 0.73 for the upper Tananim catchment (R^2 of 0.55 and 0.58, respectively).

A rainfall ensemble of 300 years was generated by the HiReS-WG for historical climate conditions and was used as forcing to the SAC-SMA model. Figure 5 presents three combinations of annual rainfall and streamflow data: (1) observed rainfall (from weather radar) and observed streamflow, (2) observed rainfall and its associated SAC-SMA simulated streamflow; and (3) HiReS-WG simulated rainfall and its associated SAC-SMA simulated streamflow. It seems that the HiReS-WG and SAC-SMA integration simulates well the observed period with the exception of the wettest annual rainfall (1181 mm observed in 1991/1992). This is attributed to the HiReS-WG limitation in generating uncharacteristically long lasting rain events as in 1991/1992 (discussed in details by Peleg and Morin, 2014). For example, the average duration of the longest 10 % rain events during the observed 12 years was 13 h, while the average duration of the longest 10 % rain events during 1991/1992 was 17 h.

4 Projected change in the hydrological regime induced by climate change

4.1 Changes in rainfall amounts

Three ensembles, each with 10 data series of 30 years of rainfall at 5 min and 0.25 km² resolution, were generated by the HiReS-WG. The first ensemble represents the historical period (beginning of the 21st century) and the second and third ensembles represent the projected future (mid 21st century) for the RCP4.5 and RCP8.5 emission scenarios, respectively. As seen in Fig. 6, the mean annual rainfall is projected to

HESSD

11, 10553–10592, 2014

Modeling convective rainfall sensitivity to climate change

N. Peleg et al.

Title Page

Abstract

Introduction

Conclusions

References

Tables

Figures

⏪

⏩

◀

▶

Back

Close

Full Screen / Esc

Printer-friendly Version

Interactive Discussion



decrease from 646 to 547 mm (15% reduction) and 531 mm (18%) for the RCP4.5 and RCP8.5 emission scenarios, respectively. The decrease in mean annual rainfall was found to be statistically significant for both emission scenarios using a two-sided z test (with a significance level [α] of 0.05).

5 A range of reduction values can be estimated by examining the change between the minimum (maximum) rainfall annual mean that was derived from the ten data series of the three ensembles. For the RCP4.5 and RCP8.5 emission scenarios the projected range of the mean annual rainfall reduction over the catchments is 2–23% and 7–25%, respectively. In addition, the standard deviation of the annual rainfall derived from the ensembles is projected to decrease from 104.5 mm for the historical period to 99.9 mm and 95.8 mm for the RCP4.5 and RCP8.5 scenarios, respectively. The changes in standard deviation however, were found insignificant ($\alpha = 0.05$) using F test for equality of two standard deviations; samples were normally distributed as tested by Shapiro–Wilk W test ($\alpha = 0.05$). In contrast to the projected decrease in mean annual rainfall and standard deviations, the coefficient of variation (CV) of the annual rainfall is projected to increase from an average of 16.5% for the historical period to 17.9 and 18.2% for the RCP4.5 and RCP8.5 emission scenarios, respectively, indicating an increase of the inter-annual changes relative to the mean rainfall.

20 Local sensitivity tests were conducted for the parameters that were modified in the ensembles of the future projection. Rainfall ensembles of 300 years each were generated for the following cases: a shortening of the wet season period, an increase in the occurrence frequency of ARST on the expense of occurrence frequency of ML, and a reduction of occurrence frequency of wet synoptic systems. For all cases, a 10% change in the parameter values that were estimated from the historic data was examined. The average annual rainfall of each ensemble and its change compared to the historical period are summarized in Table 4.

25 The reduction in the mean annual rainfall (by 15%; statistically significant using a two-sided z test, $\alpha = 0.05$) was most sensitive to the reduction in occurrence frequency of the wet synoptic systems (by 10%). Increased frequency of ARST at the

HESSD

11, 10553–10592, 2014

Modeling convective rainfall sensitivity to climate change

N. Peleg et al.

Title Page

Abstract

Introduction

Conclusions

References

Tables

Figures



Back

Close

Full Screen / Esc

Printer-friendly Version

Interactive Discussion



Modeling convective rainfall sensitivity to climate change

N. Peleg et al.

[Title Page](#)[Abstract](#)[Introduction](#)[Conclusions](#)[References](#)[Tables](#)[Figures](#)[⏪](#)[⏩](#)[◀](#)[▶](#)[Back](#)[Close](#)[Full Screen / Esc](#)[Printer-friendly Version](#)[Interactive Discussion](#)

expense of ML (by 10 %) had a small (a reduction of 0.5 %) and insignificant effect on rainfall in this region. This is a surprising result because of the marked differences in rainfall characteristics between the ML and ARST synoptic conditions. For example, convective features caused by ARST compared to ML are larger in area but with weaker rain intensities (Peleg and Morin, 2012, 2014); it is possible that some of these differences affect the total rainfall in an opposite manner such that the integrated effect is small. Shortening of the wet season period (by 10 %) had no detectable effect on the mean annual rainfall (a reduction of 0.9 %, statistically insignificant). This is because the shortening of the wet season period by 10 % implies a reduction of about 1–2 rain events only when the occurrence frequency of rain events for either the beginning or end of the wet season is low.

4.2 Changes in streamflow volumes

The mean annual streamflow volumes for the 10 data series of the historical period and of the future period (RCP4.5 and RCP8.5 emission scenarios) are presented in Fig. 7 for the upper Dalya catchment. Streamflow was calculated by the SAC-SMA using input from the above mentioned rainfall HiReS-WG ensembles. The mean annual streamflow volume calculated from the ensembles is projected to decrease from $5.34 \times 10^6 \text{ m}^3$ to $2.96 \times 10^6 \text{ m}^3$ (45 % reduction) for the RCP4.5 scenario and to $2.84 \times 10^6 \text{ m}^3$ (47 %) for the RCP8.5 scenario. A range of reduction values were computed (Fig. 7) using the maximum and minimum streamflow volumes of the data series for each period, as explained in the previous section. For the RCP4.5 and RCP8.5 emission scenarios the projected reduction range of the mean annual streamflow volume is 10–60 % and 16–66 %, respectively. As seen in the analysis of the rainfall ensembles, the standard deviation of the annual streamflow volume was projected to decrease from $3.17 \times 10^6 \text{ m}^3$ for the historical climate to $2.53 \times 10^6 \text{ m}^3$ and $2.39 \times 10^6 \text{ m}^3$ for the RCP4.5 and RCP8.5 emission scenarios, respectively. The decrease in the mean annual streamflow volume was found to be statistically significant (using a two-sided z test, $\alpha = 0.05$). Because the samples of the standard deviation are not normally

HESSD

11, 10553–10592, 2014

Modeling convective rainfall sensitivity to climate change

N. Peleg et al.

[Title Page](#)[Abstract](#)[Introduction](#)[Conclusions](#)[References](#)[Tables](#)[Figures](#)[Back](#)[Close](#)[Full Screen / Esc](#)[Printer-friendly Version](#)[Interactive Discussion](#)

distributed (tested by Shapiro–Wilk W , $\alpha = 0.05$) we did not assess the statistical significance of the projected reduction in the standard deviation. As in the case of annual rainfall, while both mean annual streamflow volume and average standard deviation of annual volume are expected to decrease, the CV of the annual streamflow volume was projected to increase from an average of 61.9 % for the historical period to 87.5 and 86.2 % for the RCP4.5 and RCP8.5 scenarios, respectively. This paragraph discuss the changes in streamflow volumes for the upper Dalya catchment; similar trends were found for the upper Taninim catchment.

In addition to the annual scale, changes in events' streamflow volumes were examined. In general, a comparison between streamflow volume and rain depth at the event scale presents a large scatter because of factors such as antecedent moisture conditions and spatial and temporal distribution of rainfall. Therefore, we have examined the average streamflow volume for all events with rainfall depth binned in 10 mm intervals (Fig. 8); an exponential fit was applied for each period for both catchments (lowest R^2 calculated was 0.96). The average events' streamflow volumes for the historical period were found to be higher than for the future period for upper Dalya by a factor of 1.9–2 and 1.4–1.9 for the RCP4.5 and RCP8.5, respectively; and for upper Taninim by a factor of 1.5–2.1 for both emission scenarios. The decrease in events' streamflow volumes for a given event rainfall depth is a result of the reduction in occurrence frequency of wet synoptic systems which implies longer dry periods between events. Thus, the upper Dalya and upper Taninim catchments were projected to produce less runoff because of drier soil and drier antecedent moisture conditions that precede rainfall events.

Last, the effect of climate change on the duration of the streamflow season (i.e., from the first to the last appearance of streamflow in the catchment's outlet) was examined. Figure 9 presents the wet season periods and streamflow seasons for both catchments. It can be seen that streamflow season is projected to be shortened mainly because of delayed onset. This shorter streamflow season is attributed to the increase in dry duration between rainfall events, which cause drier soil conditions and delays the first

Modeling convective rainfall sensitivity to climate change

N. Peleg et al.

Title Page

Abstract

Introduction

Conclusions

References

Tables

Figures



Back

Close

Full Screen / Esc

Printer-friendly Version

Interactive Discussion



streamflow event. Although to a lesser extent, the projected shorter streamflow season was also due to an earlier ending caused by projected earlier ending of wet synoptic systems, as discussed in Sect. 3.3. The shorter streamflow season was projected to be more severe for the RCP8.5 scenario (26 and 28 % for the upper Dalya and upper Taninim catchments, respectively) compared to the RCP4.5 scenario (22 % for both catchments).

5 Discussion and conclusions

In this paper we present a case study in which we assessed the sensitivity of the hydrological regime of two medium-size catchments (upper Dalya and upper Taninim, $\sim 50 \text{ km}^2$ each) to projected climate changes by generating high spatiotemporal resolution rain fields using the HiReS-WG (adequate for convective features) and applying them as input to the SAC-SMA hydrological model. The climate projections were done by modifying the occurrence frequency of the regional meteorological wet synoptic systems based on analysis of three GCMs CMIP5 simulations for the RCP4.5 and RCP8.5 emission scenarios.

Previous studies used daily rainfall resolution, for example: Chiew and McMahon (2002) examined the projected effects of climate change on runoff, evapotranspiration and soil moisture for 8 Australian catchments, ranging from a medium scale (27 km^2) to large scale (544 km^2); Jones et al. (2006) estimated the hydrological sensitivity to changes in rainfall and potential evaporation in 22 catchments in Australia, ranging from medium (52 km^2) to large (1300 km^2) scale; Chiew et al. (2010) conducted a comprehensive study on 8 medium-to-large catchments ($161\text{--}1540 \text{ km}^2$) in Western Australia by comparing the predicted changes in rainfall and runoff characteristics; Vaze and Teng (2011) conducted another study in Australia to predict changes in runoff for catchments of medium-to-large scales ($50\text{--}2000 \text{ km}^2$). All the above studies used rainfall data for point locations.

Modeling convective rainfall sensitivity to climate change

N. Peleg et al.

[Title Page](#)[Abstract](#)[Introduction](#)[Conclusions](#)[References](#)[Tables](#)[Figures](#)[Back](#)[Close](#)[Full Screen / Esc](#)[Printer-friendly Version](#)[Interactive Discussion](#)

The use of the HiReS-WG model to generate high spatiotemporal resolution rain fields for hydrological projection for small-to-medium sized catchments enables the simulation of streamflow not only for the annual or seasonal scale but also for the examination of the characteristics of flow events that last less than a few hours. In this study we demonstrated this capability by examining the projected change in the volumes of streamflow events for the upper Dalya and upper Taninim catchments. It was found that a major reduction in the projected average volumes of the streamflow events is expected.

The synthetic rainfall ensembles generated by the HiReS-WG indicated that the mean annual rainfall is projected to be reduced by 15 % (in a range of 2–23 %) and 18 % (7–25 %) for the RCP4.5 and RCP8.5 emission scenarios, respectively, comparing 1996–2005 to 2046–2055 periods. This reduction is larger than the regional reduction projected by other studies conducted for northern Israel. For example, Evans (2009) projected an annual decrease in rainfall of 20 mm (3 %) for 2050 compared to 2005; future rainfall reductions for the end of the 21st-century of 30–75 mm (4–12 %) were reported by Alpert et al. (2008) while Oenol and Semazzi (2009) reported a decrease in winter rainfall of 24 %. These studies used the A2 emission scenario (presented in the IPCC AR4 report) and were averaged for a much larger domain than the one examined in this study. In addition, their projections were derived from RCMs. In this study we focused on changes in the characteristics of the wet synoptic systems. We found that the characteristics of the projected wet synoptic systems are expected to have a shorter season, fewer occurrences of wet synoptic systems, and an increase in the occurrences of ARST at the expense of ML. Other factors related to rainfall characteristics might also be subject to change, for example, Black (2009) and Krichak et al. (2011) discussed that the proportion of convective rainfall out of the total rainfall might increase as a result of projected increase in surface temperature. Such factors weren't considered in this study but could be included in future studies. To the best of our knowledge, currently there are no future projections that consider changes in rainfall spatiotemporal statistics for this region.

**Modeling convective
rainfall sensitivity to
climate change**

N. Peleg et al.

[Title Page](#)[Abstract](#)[Introduction](#)[Conclusions](#)[References](#)[Tables](#)[Figures](#)[Back](#)[Close](#)[Full Screen / Esc](#)[Printer-friendly Version](#)[Interactive Discussion](#)

Along with the projected decrease in mean annual rainfall, a decrease in the annual rainfall standard deviations and an increase in the annual rainfall CV were found. This implies an increase of the inter-annual changes relative to the mean rainfall for the future period. This is a similar trend to that found by Samuels et al. (2013) for Tel Aviv, located on the central coastline of Israel, for the A1B emission scenario. They reported a median decrease of 9.8 % in annual rainfall for 2035–2060 with a minor annual rainfall decrease of 1.7 % for the upper 5 percentiles. This implies that the extreme wet years will be affected by climate change in a different way than the mean annual rainfall. Similar results were found for the projected change in the mean annual streamflow volume, as it was also found that the mean and standard deviation are projected to decrease and the CV is projected to increase.

The mean annual streamflow volumes were projected to be reduced by 10–66 % (RCP4.5 and RCP8.5 emission scenarios). Only two studies that assessed climate change projected impact on the hydrological regime for this region (both using A1B emission scenario) were found. Samuels et al. (2010) reported a projected reduction in mean daily base flow and surface flow of 10–11 % and 17 %, respectively, for the large-sized catchment ($> 1000 \text{ km}^2$) of the Upper Jordan River (northern Israel), comparing 1980–2005 and 2036–2060 periods. Rimmer et al. (2011) calculated trends of the annual incoming water volumes for the Sea of Galilee (northern Israel), comparing the periods 1979–2009 and 2015–2060 and using four climate models. The trends were found to vary between $-9.05 \times 10^6 \text{ m}^3 \text{ year}^{-1}$ and $1.94 \times 10^6 \text{ m}^3 \text{ year}^{-1}$; the maximum projected annual inflow reduction trend was equal to $\sim 1.3\%$. All studies projected a reduction in streamflow volumes, but differences exist between projected reduction amounts as there are differences between the studies: the domain size, the emission scenarios, the historical and future periods that were considered, and the catchments properties (e.g., Dalya and Taninim are ephemeral streams and the Upper Jordan River is a perennial river).

Changes in rainfall amounts are usually amplified in streamflow discharge and volume (Chiew and McMahon, 2002; Chiew et al., 2010; Li et al., 2013; Peleg and

Modeling convective rainfall sensitivity to climate change

N. Peleg et al.

[Title Page](#)[Abstract](#)[Introduction](#)[Conclusions](#)[References](#)[Tables](#)[Figures](#)[⏪](#)[⏩](#)[◀](#)[▶](#)[Back](#)[Close](#)[Full Screen / Esc](#)[Printer-friendly Version](#)[Interactive Discussion](#)

Gvirtsman, 2010). This effect was well demonstrated in the results of this study when examining the non-linearity of the synoptic-rainfall-streamflow interactions, which resolved in percentage change in runoff of about three times the percentage change in rainfall (the rainfall is projected to reduce by 2–25% and the annual streamflow volume by 10–66%). Future drier soil conditions resulting from the shortening of the wet season and reducing the number of rainfall events (which cause an increase in the length of dry periods between rainfall events) are the reasons for this amplification. The amplification found in this study is of more than three times the change in annual runoff in comparison to the change in annual rainfall; Chiew et al. (2010) reported a change in annual runoff that is up to two times the change in annual rainfall, but in an earlier study Chiew and McMahon (2002) stated that “in ephemeral catchment with low runoff coefficients the percentage change in runoff can be more than four times the percentage change in rainfall”.

Lastly, limitation of the HiReS-WG and SAC-SMA should be taken into consideration when discussing the effect of climate change on rainfall and streamflow. First, the HiReS-WG is unable to generate the observed extreme rainfall year (1991/1992); this is attributed to the HiReS-WG inability of generating rain events with extreme long-durations (Peleg and Morin, 2014). The SAC-SMA was often implemented to a coarser spatio-temporal resolution than an area of tens km² and 5 min intervals that was applied in this study. The River Forecast Centers of the US National Weather Service commonly implement the SAC-SMA in basins larger than 50 km² and with hourly or longer temporal resolution (e.g., Shamir et al., 2006). The coarse resolution allows for averaging in time and space, and the hydrologic response is less abrupt therefore contributing to robust model performance. Nevertheless, the SAC-SMA was successfully implemented in the upper Dalya and upper Taninim catchments (Shamir et al., 2014a). When considering the results presented here of the effect of climate change on the hydrological regime it should be noted that besides the rainfall changes discussed above, no other changes were made. SAC-SMA parameters (land use, vegetation type and coverage, evaporation, etc.) were regarded as stationary; thus

enabling the examination of how the projected changes in the regional synoptic systems would affect the runoff without taking into consideration other non-synoptic parameters (some are expected to change, e.g., evaporation is projected to increase along with an increase in temperature).

5 We conclude that for small-to-medium sized catchments influenced by convective rainfall the HiReS-WG, integrated in the suggested modeling framework, is a good tool for projecting changes in the hydrological regime resulting from climate change. The HiReS-WG can be applied to catchments in other climate environments affected by convective rainfall. Further research assessing projected changes in rainfall
10 spatiotemporal statistics is still required to better represent climate change impact on rainfall; once such information is available, its integration into the HiReS-WG is straightforward.

Acknowledgements. The study was funded by the Israel Water Authority, the Israel Ministry of Environmental Protection, the Israel Ministry of Agriculture and Rural Development, the
15 KKL-JNF, the Israel–USA Bi-National Science Foundation (BSF-2008046), and the Israel Science Foundation’s Recanati and IDB Group Foundation (grant no. 332/11). We acknowledge the World Climate Research Programmer’s Working Group on Coupled Modelling, which is responsible for CMIP, and we thank the climate modeling groups (listed in Table 2 of this paper) for making the model’s output available. For CMIP, the US Department of Energy’s Program
20 for Climate Model Diagnosis and Intercomparison provides coordinating support and led the development of software infrastructure in partnership with the Global Organization for Earth System Science Portals. NCEP reanalysis data was provided by the NOAA/OAR/ESRL PSD, Boulder, Colorado, USA, from their website at <http://www.esrl.noaa.gov/psd/>.

References

25 Alpert, P., Osetinsky, I., Ziv, B., and Shafir, H.: Semi-objective classification for daily synoptic systems: application to the Eastern Mediterranean climate change, *Int. J. Climatol.*, 24, 1001–1011, doi:10.1002/joc.1036, 2004. 10560

Modeling convective rainfall sensitivity to climate change

N. Peleg et al.

Title Page

Abstract

Introduction

Conclusions

References

Tables

Figures



Back

Close

Full Screen / Esc

Printer-friendly Version

Interactive Discussion



Modeling convective rainfall sensitivity to climate change

N. Peleg et al.

[Title Page](#)[Abstract](#)[Introduction](#)[Conclusions](#)[References](#)[Tables](#)[Figures](#)[⏪](#)[⏩](#)[◀](#)[▶](#)[Back](#)[Close](#)[Full Screen / Esc](#)[Printer-friendly Version](#)[Interactive Discussion](#)

Alpert, P., Krichak, S. O., Shafir, H., Haim, D., and Osetinsky, I.: Climatic trends to extremes employing regional modeling and statistical interpretation over the E. Mediterranean, *Global Planet. Change*, 63, 163–170, doi:10.1016/j.gloplacha.2008.03.003, 2008. 10570

Arnaud, P., Lavabre, J., Fouchier, C., Diss, S., and Javelle, P.: Sensitivity of hydrological models to uncertainty in rainfall input, *Hydrolog. Sci. J.*, 56, 397–410, doi:10.1080/02626667.2011.563742, 2011. 10555

Ashbel, D.: Great floods in Sinai Peninsula, Palestine, Syria and the Syrian Desert, and the influence of the red sea on their formation, *Q. J. Roy. Meteor. Soc.*, 64, 635–639, doi:10.1002/qj.49706427716, 1938. 10560

Bahat, Y., Grodek, T., Lekach, J., and Morin, E.: Rainfall-runoff modeling in a small hyper-arid catchment, *J. Hydrol.*, 373, 204–217, doi:10.1016/j.jhydrol.2009.04.026, 2009. 10555

Black, E.: The impact of climate change on daily precipitation statistics in Jordan and Israel, *Atmos. Sci. Lett.*, 10, 192–200, doi:10.1002/asl.233, 2009. 10570

Borga, M., Stoffel, M., Marchi, L., Marra, F., and Jakob, M.: Hydrogeomorphic response to extreme rainfall in headwater systems: flash floods and debris flows, *J. Hydrol.*, 518, 194–205, doi:10.1016/j.jhydrol.2014.05.022, 2014. 10557

Carpenter, T. M. M.: An interdisciplinary approach to characterize flash flood occurrence frequency for mountainous Southern California, Ph.D. thesis, UC San Diego, California, 2011. 10563

Chiew, F. H. S. and McMahon, T. A.: Modelling the impacts of climate change on Australian streamflow, *Hydrol. Process.*, 16, 1235–1245, doi:10.1002/hyp.1059, 2002. 10569, 10571, 10572

Chiew, F. H. S., Kirono, D. G. C., Kent, D. M., Frost, A. J., Charles, S. P., Timbal, B., Nguyen, K. C., and Fu, G.: Comparison of runoff modelled using rainfall from different downscaling methods for historical and future climates, *J. Hydrol.*, 387, 10–23, doi:10.1016/j.jhydrol.2010.03.025, 2010. 10569, 10571, 10572

Evans, J. P.: 21st century climate change in the Middle East, *Climatic Change*, 92, 417–432, doi:10.1007/s10584-008-9438-5, 2009. 10570

Fowler, H. J., Blenkinsop, S., and Tebaldi, C.: Linking climate change modelling to impacts studies: recent advances in downscaling techniques for hydrological modelling, *Int. J. Climatol.*, 27, 1547–1578, doi:10.1002/joc.1556, 2007. 10555

Modeling convective rainfall sensitivity to climate change

N. Peleg et al.

[Title Page](#)[Abstract](#)[Introduction](#)[Conclusions](#)[References](#)[Tables](#)[Figures](#)[⏪](#)[⏩](#)[◀](#)[▶](#)[Back](#)[Close](#)[Full Screen / Esc](#)[Printer-friendly Version](#)[Interactive Discussion](#)

Gabella, M., Joss, J., Perona, G., and Galli, G.: Accuracy of rainfall estimates by two radars in the same Alpine environment using gage adjustment, *J. Geophys. Res.-Atmos.*, 106, 5139–5150, doi:10.1029/2000jd900487, 2001. 10564

Georgakakos, K. P.: A generalized stochastic hydrometeorological model for flood and flash-flood forecasting. 1. Formulation, *Water Resour. Res.*, 22, 2083–2095, doi:10.1029/WR022i013p02083, 1986. 10563

Georgakakos, A. P., Yao, H., Kistenmacher, M., Georgakakos, K. P., Graham, N. E., Cheng, F. Y., Spencer, C., and Shamir, E.: Value of adaptive water resources management in Northern California under climatic variability and change: reservoir management, *J. Hydrol.*, 412, 34–46, doi:10.1016/j.jhydrol.2011.04.038, 2012a. 10556, 10563

Georgakakos, K. P., Graham, N. E., Cheng, F. Y., Spencer, C., Shamir, E., Georgakakos, A. P., Yao, H., and Kistenmacher, M.: Value of adaptive water resources management in northern California under climatic variability and change: dynamic hydroclimatology, *J. Hydrol.*, 412, 47–65, doi:10.1016/j.jhydrol.2011.04.032, 2012b. 10563

Grodek, T., Jacoby, Y., Morin, E., and Katz, O.: Effectiveness of exceptional rainstorms on a small Mediterranean basin, *Geomorphology*, 159, 156–168, doi:10.1016/j.geomorph.2012.03.016, 2012. 10559

Hewitson, B. C. and Crane, R. G.: Climate downscaling: techniques and application, *Clim. Res.*, 7, 85–95, doi:10.3354/cr007085, 1996. 10555

Jones, R. N., Chiew, F. H. S., Boughton, W. C., and Zhang, L.: Estimating the sensitivity of mean annual runoff to climate change using selected hydrological models, *Adv. Water Resour.*, 29, 1419–1429, doi:10.1016/j.advwatres.2005.11.001, 2006. 10569

Kahana, R., Ziv, B., Enzel, Y., and Dayan, U.: Synoptic climatology of major floods in the Negev Desert, Israel, *Int. J. Climatol.*, 22, 867–882, doi:10.1002/joc.766, 2002. 10560

Kalnay, E., Kanamitsu, M., Kistler, R., Collins, W., Deaven, D., Gandin, L., Iredell, M., Saha, S., White, G., Woollen, J., Zhu, Y., Chelliah, M., Ebisuzaki, W., Higgins, W., Janowiak, J., Mo, K. C., Ropelewski, C., Wang, J., Leetmaa, A., Reynolds, R., Jenne, R., and Joseph, D.: The NCEP/NCAR 40 year reanalysis project, *B. Am. Meteorol. Soc.*, 77, 437–471, doi:10.1175/1520-0477(1996)077<0437:tnyrp>2.0.co;2, 1996. 10560

Kerkhoven, E. and Gan, T. Y.: Unconditional uncertainties of historical and simulated river flows subjected to climate change, *J. Hydrol.*, 396, 113–127, doi:10.1016/j.jhydrol.2010.10.042, 2011. 10563

Modeling convective rainfall sensitivity to climate change

N. Peleg et al.

[Title Page](#)

[Abstract](#)

[Introduction](#)

[Conclusions](#)

[References](#)

[Tables](#)

[Figures](#)



[Back](#)

[Close](#)

[Full Screen / Esc](#)

[Printer-friendly Version](#)

[Interactive Discussion](#)



- Kioutsoukis, I., Melas, D., and Zanis, P.: Statistical downscaling of daily precipitation over Greece, *Int. J. Climatol.*, 28, 679–691, doi:10.1002/joc.1557, 2008. 10556
- Koutroulis, A. G., Tسانis, I. K., Daliakopoulos, I. N., and Jacob, D.: Impact of climate change on water resources status: a case study for Crete Island, Greece, *J. Hydrol.*, 479, 146–158, doi:10.1016/j.jhydrol.2012.11.055, 2013. 10563
- Krichak, S. O., Breitgand, J. S., Samuels, R., and Alpert, P.: A double-resolution transient RCM climate change simulation experiment for near-coastal eastern zone of the Eastern Mediterranean region, *Theor. Appl. Climatol.*, 103, 167–195, doi:10.1007/s00704-010-0279-6, 2011. 10570
- Kwon, H.-H., Sivakumar, B., Moon, Y.-I., and Kim, B.-S.: Assessment of change in design flood frequency under climate change using a multivariate downscaling model and a precipitation-runoff model, *Stoch. Env. Res. Risk A.*, 25, 567–581, doi:10.1007/s00477-010-0422-z, 2011. 10563
- Li, F., Zhang, Y., Xu, Z., Teng, J., Liu, C., Liu, W., and Mpelasoka, F.: The impact of climate change on runoff in the southeastern Tibetan Plateau, *J. Hydrol.*, 505, 188–201, doi:10.1016/j.jhydrol.2013.09.052, 2013. 10571
- Morin, E. and Gabella, M.: Radar-based quantitative precipitation estimation over Mediterranean and dry climate regimes, *J. Geophys. Res.*, 112, D20108, doi:10.1029/2006jd008206, 2007. 10564
- Morin, E. and Yakir, H.: Hydrological impact and potential flooding of convective rain cells in a semi-arid environment, *Hydrolog. Sci. J.*, 59, 1353–1362, doi:10.1080/02626667.2013.841315, 2014. 10555
- Morin, E., Goodrich, D. C., Maddox, R. A., Gao, X. G., Gupta, H. V., and Sorooshian, S.: Spatial patterns in thunderstorm rainfall events and their coupling with watershed hydrological response, *Adv. Water Resour.*, 29, 843–860, doi:10.1016/j.advwatres.2005.07.014, 2006. 10555
- Moss, R. H., Edmonds, J. A., Hibbard, K. A., Manning, M. R., Rose, S. K., van Vuuren, D. P., Carter, T. R., Emori, S., Kainuma, M., Kram, T., Meehl, G. A., Mitchell, J. F. B., Nakicenovic, N., Riahi, K., Smith, S. J., Stouffer, R. J., Thomson, A. M., Weyant, J. P., and Wilbanks, T. J.: The next generation of scenarios for climate change research and assessment, *Nature*, 463, 747–756, doi:10.1038/nature08823, 2010. 10555, 10561

Modeling convective rainfall sensitivity to climate change

N. Peleg et al.

[Title Page](#)

[Abstract](#)

[Introduction](#)

[Conclusions](#)

[References](#)

[Tables](#)

[Figures](#)

[⏪](#)

[⏩](#)

[◀](#)

[▶](#)

[Back](#)

[Close](#)

[Full Screen / Esc](#)

[Printer-friendly Version](#)

[Interactive Discussion](#)



Najafi, M. R., Moradkhani, H., and Jung, I. W.: Assessing the uncertainties of hydrologic model selection in climate change impact studies, *Hydrol. Process.*, 25, 2814–2826, doi:10.1002/hyp.8043, 2011. 10563

5 Nikolopoulos, E. I., Anagnostou, E. N., Hossain, F., Gebremichael, M., and Borga, M.: Understanding the scale relationships of uncertainty propagation of satellite rainfall through a distributed hydrologic model, *J. Hydrometeorol.*, 11, 520–532, doi:10.1175/2009jhm1169.1, 2010. 10555

Oenol, B. and Semazzi, F. H. M.: Regionalization of climate change simulations over the eastern Mediterranean, *J. Climate*, 22, 1944–1961, doi:10.1175/2008jcli1807.1, 2009. 10570

10 Paschalis, A., Molnar, P., Fatichi, S., and Burlando, P.: A stochastic model for high-resolution space-time precipitation simulation, *Water Resour. Res.*, 49, 8400–8417, doi:10.1002/2013wr014437, 2013. 10556

Paschalis, A., Fatichi, S., Molnar, P., Rimkus, S., and Burlando, P.: On the effects of small scale space–time variability of rainfall on basin flood response, *J. Hydrol.*, 514, 313–327, doi:10.1016/j.jhydrol.2014.04.014, 2014. 10555

15 Peleg, N. and Gvirtzman, H.: Groundwater flow modeling of two-levels perched karstic leaking aquifers as a tool for estimating recharge and hydraulic parameters, *J. Hydrol.*, 388, 13–27, doi:10.1016/j.jhydrol.2010.04.015, 2010. 10571

Peleg, N. and Morin, E.: Convective rain cells: radar-derived spatiotemporal characteristics and synoptic patterns over the eastern Mediterranean, *J. Geophys. Res.-Atmos.*, 117, D15116, doi:10.1029/2011jd017353, 2012. 10560, 10561, 10563, 10567

20 Peleg, N. and Morin, E.: Stochastic convective rain-field simulation using a high-resolution synoptically conditioned weather generator (HiReS-WG), *Water Resour. Res.*, 50, 2124–2139, doi:10.1002/2013wr014836, 2014. 10555, 10556, 10557, 10559, 10560, 10561, 10562, 10565, 10567, 10572

Peleg, N., Ben-Asher, M., and Morin, E.: Radar subpixel-scale rainfall variability and uncertainty: lessons learned from observations of a dense rain-gauge network, *Hydrol. Earth Syst. Sci.*, 17, 2195–2208, doi:10.5194/hess-17-2195-2013, 2013. 10555, 10561

25 Peleg, N., Bartov, M., and Morin, E.: CMIP5-predicted climate shifts over the east mediterranean: implications for the transition region between mediterranean and semi-arid climates, *Int. J. Climatol.*, doi:10.1002/joc.4114, online first, 2014. 10560, 10561, 10562, 10582, 10585

Modeling convective rainfall sensitivity to climate change

N. Peleg et al.

Title Page

Abstract

Introduction

Conclusions

References

Tables

Figures

⏪

⏩

◀

▶

Back

Close

Full Screen / Esc

Printer-friendly Version

Interactive Discussion



- Reed, S., Koren, V., Smith, M., Zhang, Z., Moreda, F., Seo, D. J., and Participants, D.: Overall distributed model intercomparison project results, *J. Hydrol.*, 298, 27–60, doi:10.1016/j.jhydrol.2004.03.031, 2004. 10563
- Rimmer, A., Givati, A., Samuels, R., and Alpert, P.: Using ensemble of climate models to evaluate future water and solutes budgets in Lake Kinneret, Israel, *J. Hydrol.*, 410, 248–259, doi:10.1016/j.jhydrol.2011.09.025, 2011. 10571
- Robertson, A. W., Kirshner, S., and Smyth, P.: Downscaling of daily rainfall occurrence over northeast Brazil using a hidden Markov model, *J. Climate*, 17, 4407–4424, doi:10.1175/jcli-3216.1, 2004. 10556
- Rozalis, S., Morin, E., Yair, Y., and Price, C.: Flash flood prediction using an uncalibrated hydrological model and radar rainfall data in a Mediterranean watershed under changing hydrological conditions, *J. Hydrol.*, 394, 245–255, doi:10.1016/j.jhydrol.2010.03.021, 2010. 10555
- Saaroni, H., Halfon, N., Ziv, B., Alpert, P., and Kutiel, H.: Links between the rainfall regime in Israel and location and intensity of Cyprus lows, *Int. J. Climatol.*, 30, 1014–1025, doi:10.1002/joc.1912, 2010. 10558, 10560
- Samuels, R., Rimmer, A., Hartmann, A., Krichak, S., and Alpert, P.: Climate change impacts on Jordan river flow: downscaling application from a regional climate model, *J. Hydrometeorol.*, 11, 860–879, doi:10.1175/2010jhm1177.1, 2010. 10571
- Samuels, R., Harel, M., and Alpert, P.: A new methodology for weighting high-resolution model simulations to project future rainfall in the Middle East, *Clim. Res.*, 57, 51–60, doi:10.3354/cr01147, 2013. 10571
- Semenov, M. A. and Barrow, E. M.: Use of a stochastic weather generator in the development of climate change scenarios, *Climatic Change*, 35, 397–414, doi:10.1023/a:1005342632279, 1997. 10556
- Shamir, E., Carpenter, T. M., Fickenscher, P., and Georgakakos, K. P.: Evaluation of the National Weather Service operational hydrologic model and forecasts for the American River basin, *J. Hydrol. Eng.*, 11, 392–407, doi:10.1061/(asce)1084-0699(2006)11:5(392), 2006. 10572
- Shamir, E., Georgakakos, K., Spencer, C., Modrick, T. M., Murphy Jr., M., and R., J.: Evaluation of real-time flash flood forecasts for Haiti during the passage of Hurricane Tomas, November 4–6, 2010, *Nat. Hazards*, 67, 459–482, doi:10.1007/s11069-013-0573-6, 2013. 10555
- Shamir, E., Georgakakos, K. P., Peleg, N., and Morin, E.: Hydrologic Model Development for the Dalia-Tanimim watersheds in Israel, Tech. rep., HRC, San Diego, CA, available at:

www.hrc-lab.org/projects/projectpdfs/HRCTN66_20140210.pdf (last access: 15 September 2014), 2014a. 10563, 10572

Shamir, E., Megdal, S., Carrillo, C., Castro, C., Chang, H.-I., Chief, K., Corkhill, F., Eden, S., Georgakakos, K., Nelson, K., and Prietto, J.: Climate change and water resources management in the Upper Santa Cruz River, Arizona, *J. Hydrol.*, in review, 2014b. 10556

Singh, V. P.: Effect of spatial and temporal variability in rainfall and watershed characteristics on stream flow hydrograph, *Hydrol. Process.*, 11, 1649–1669, doi:10.1002/(sici)1099-1085(19971015)11:12<1649::aid-hyp495>3.0.co;2-1, 1997. 10555

Smith, J. A., Baeck, M. L., Morrison, J. E., and Sturdevant-Rees, P.: Catastrophic rainfall and flooding in Texas, *J. Hydrometeorol.*, 1, 5–25, doi:10.1175/1525-7541(2000)001<0005:crafit>2.0.co;2, 2000. 10555

Smith, M. B., Seo, D. J., Koren, V. I., Reed, S. M., Zhang, Z., Duan, Q., Moreda, F., and Cong, S.: The distributed model intercomparison project (DMIP): motivation and experiment design, *J. Hydrol.*, 298, 4–26, doi:10.1016/j.jhydrol.2004.03.040, 2004. 10563

Taylor, K. E., Stouffer, R. J., and Meehl, G. A.: An overview of CMIP5 and the experiment design, *B. Am. Meteorol. Soc.*, 93, 485–498, doi:10.1175/bams-d-11-00094.1, 2012. 10555, 10561

Tsvieli, Y. and Zangvil, A.: Synoptic climatological analysis of “wet” and “dry” Red Sea Troughs over Israel, *Int. J. Climatol.*, 25, 1997–2015, doi:10.1002/joc.1232, 2005. 10560

Vaze, J. and Teng, J.: Future climate and runoff projections across New South Wales, Australia: results and practical applications, *Hydrol. Process.*, 25, 18–35, doi:10.1002/hyp.7812, 2011. 10569

Wilby, R. L. and Wigley, T. M. L.: Downscaling general circulation model output: a review of methods and limitations, *Prog. Phys. Geog.*, 21, 530–548, doi:10.1177/030913339702100403, 1997. 10555

Wilks, D. S. and Wilby, R. L.: The weather generation game: a review of stochastic weather models, *Prog. Phys. Geog.*, 23, 329–357, doi:10.1177/030913339902300302, 1999. 10556

Yakir, H. and Morin, E.: Hydrologic response of a semi-arid watershed to spatial and temporal characteristics of convective rain cells, *Hydrol. Earth Syst. Sci.*, 15, 393–404, doi:10.5194/hess-15-393-2011, 2011. 10555

Zocatelli, D., Borga, M., Viglione, A., Chirico, G. B., and Blöschl, G.: Spatial moments of catchment rainfall: rainfall spatial organisation, basin morphology, and flood response, *Hydrol. Earth Syst. Sci.*, 15, 3767–3783, doi:10.5194/hess-15-3767-2011, 2011. 10555

HESSD

11, 10553–10592, 2014

Modeling convective rainfall sensitivity to climate change

N. Peleg et al.

Title Page

Abstract

Introduction

Conclusions

References

Tables

Figures

⏪

⏩

◀

▶

Back

Close

Full Screen / Esc

Printer-friendly Version

Interactive Discussion



HESSD

11, 10553–10592, 2014

Modeling convective rainfall sensitivity to climate change

N. Peleg et al.

[Title Page](#)

[Abstract](#)

[Introduction](#)

[Conclusions](#)

[References](#)

[Tables](#)

[Figures](#)



[Back](#)

[Close](#)

[Full Screen / Esc](#)

[Printer-friendly Version](#)

[Interactive Discussion](#)



Table 1. Summary of data sources and resolutions used in this study.

Data type	Source	Resolution
Weather radar	Shacham (EMS) Mekorot	5 min and $1.4^\circ \times 1$ km
Rain gauges (national network)	Israel Meteorological Service	Daily
Rain gauges (dense network)	Hydrometeorology lab at the Hebrew University	1 min
Hydrometric stations	Israel Water Authority	Changes within flow event

HESSD

11, 10553–10592, 2014

Modeling convective rainfall sensitivity to climate change

N. Peleg et al.

Table 2. Summary of the control (NCEP/NCAR reanalysis) and the climate models (CMIP5) used in the study

Modeling center	Model name	Grid location	Spatial resolution
National Centers for Environmental Prediction	NCEP/NCAR reanalysis	35° E 32.5° N	2.5° × 2.5°
Beijing Climate Center, China Meteorological Administration	BCC-CSM1.1	33.75° E 32.1° N	2.8° × 2.8°
NOAA Geophysical Fluid Dynamics Laboratory	GFDL-ESM2G	33.75° E 33.4° N	2° × 2.5°
Met Office Hadley Centre (Realization contributed by Instituto Nacional de Pesquisas Espaciais)	HadGEM2-ES	33.75° E 33.1° N	1.25° × 1.87°

[Title Page](#)[Abstract](#)[Introduction](#)[Conclusions](#)[References](#)[Tables](#)[Figures](#)[Back](#)[Close](#)[Full Screen / Esc](#)[Printer-friendly Version](#)[Interactive Discussion](#)

Modeling convective rainfall sensitivity to climate change

N. Peleg et al.

Table 3. Projected changes in regional synoptic system frequency derived from three GCMs comparing the beginning and the middle of the 21st century for the northern Israeli coastline (after Peleg et al., 2014).

	HadGEM2-ES		GFDL-ESM2G		BCC-CSM1.1	
	RCP4.5	RCP8.5	RCP4.5	RCP8.5	RCP4.5	RCP8.5
Change in occurrence frequency of wet synoptic systems	−10 %	−10 %	−12 %	−12 %	−17 %	−17 %
Change in duration of wet season period	−2.6 %	−6 %	+6.6 %	+1.9 %	−12.6 %	−12.7 %
Change in occurrence frequency of ARSTs (on the expense of occurrence frequency of MLs)	+5.8 %	+10.8 %	0 %	+2.2 %	+1 %	+1.2 %

[Title Page](#)
[Abstract](#)
[Introduction](#)
[Conclusions](#)
[References](#)
[Tables](#)
[Figures](#)

[Back](#)
[Close](#)
[Full Screen / Esc](#)
[Printer-friendly Version](#)
[Interactive Discussion](#)


HESSD

11, 10553–10592, 2014

Modeling convective rainfall sensitivity to climate change

N. Peleg et al.

Table 4. Summary of the local sensitivity tests. The average annual rainfall of each ensemble and its projected change comparing to the historical ensemble (in parenthesis) are presented. Asterisks mark significant changes at the 0.05 level.

Ensemble	Mean annual rainfall (mm)
Historical period (1996–2005)	646
Shortening of wet season period by 10 %	640 (–0.9 %)
Increasing occurrence frequency of ARSTs on the expense of occurrence frequency of MLs by 10 %	643 (–0.5 %)
Reducing occurrence frequency of wet synoptic systems by 10 %	547 (–15.3 %) *

[Title Page](#)

[Abstract](#)

[Introduction](#)

[Conclusions](#)

[References](#)

[Tables](#)

[Figures](#)

[⏪](#)

[▶️](#)

[◀️](#)

[▶️](#)

[Back](#)

[Close](#)

[Full Screen / Esc](#)

[Printer-friendly Version](#)

[Interactive Discussion](#)



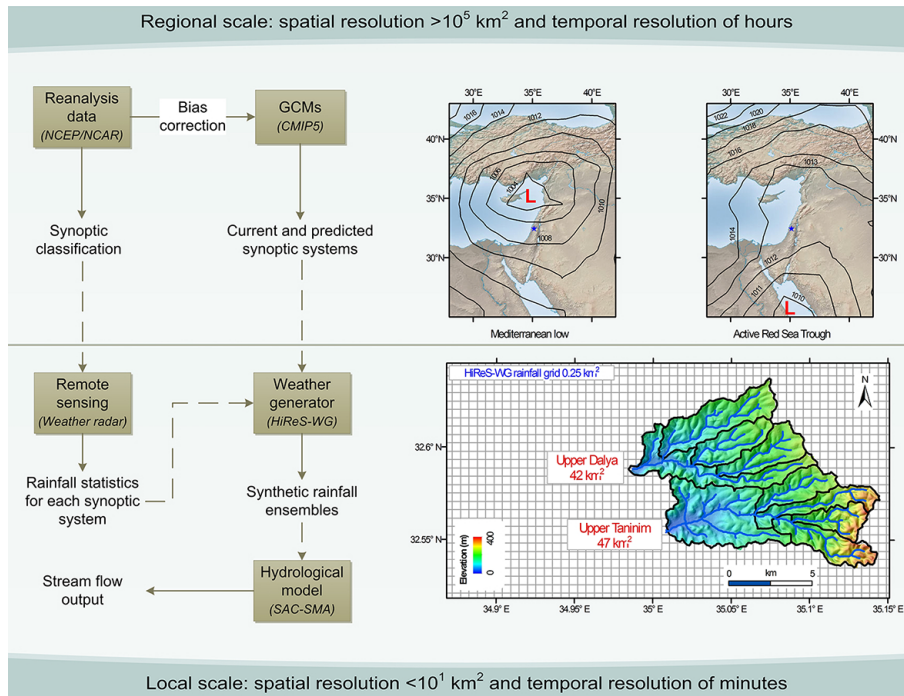


Figure 1. A framework flow chart (left) for assessing the sensitivity of the hydrologic regime to climate change. Models mentioned in parenthesis (italic caption) relate to the models or methods used for the case study of upper Dalya and upper Taninim catchments. The catchments are presented in the lower right side and the prevailing two wet synoptic systems affecting the region are presented in the upper right side (contours represent sea level pressure in hPa).

Modeling convective rainfall sensitivity to climate change

N. Peleg et al.

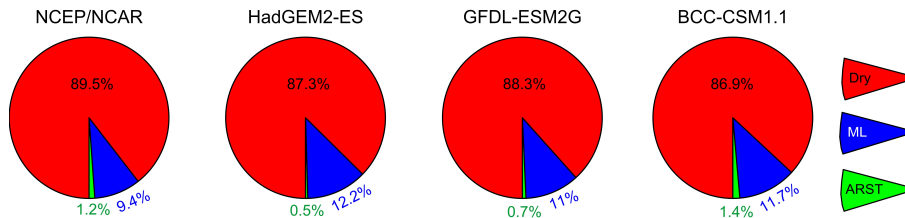


Figure 2. Annual average of 6 h occurrence frequency of dry, ML and ARST synoptic systems derived from the NCEP/NCAR reanalysis data and the three GCMs used in this study for the historical period (after Peleg et al., 2014). The GCMs slightly overestimate the wet synoptic systems frequency by 2.1 % (HadGEM2-ES), 1.2 % (GFDL-ESM2G) and 2.5 % (BCC-CSM1.1).

Title Page

Abstract

Introduction

Conclusions

References

Tables

Figures

⏪

⏩

◀

▶

Back

Close

Full Screen / Esc

Printer-friendly Version

Interactive Discussion



Modeling convective
rainfall sensitivity to
climate change

N. Peleg et al.

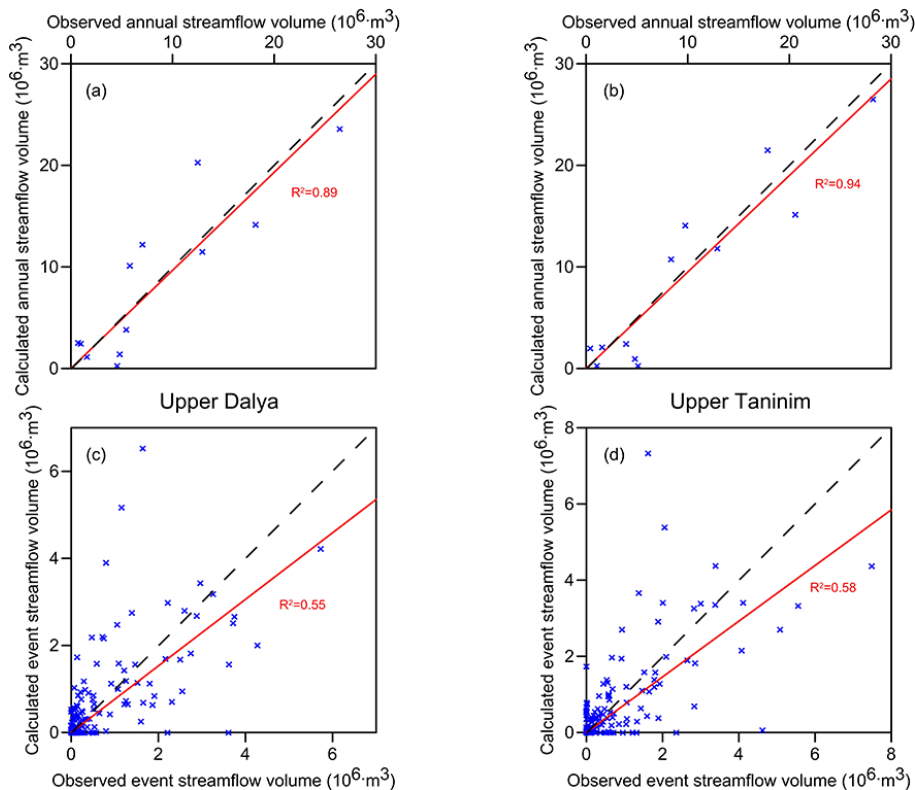


Figure 3. Panels (a) and (b) present observed (from hydrometric stations) vs. calculated (from SAC-SMA) annual streamflow volumes for the upper Dalya and upper Taninim catchments (respectively) for 12 years of data. The R^2 values relate to the linear fit that runs through the origin (red line). Dashed line represents perfect match between observed and calculated volumes (slope of 1). Panels (c) and (d) are the same but for event streamflow volumes.

[Title Page](#)[Abstract](#)[Introduction](#)[Conclusions](#)[References](#)[Tables](#)[Figures](#)[Back](#)[Close](#)[Full Screen / Esc](#)[Printer-friendly Version](#)[Interactive Discussion](#)

**Modeling convective
rainfall sensitivity to
climate change**

N. Peleg et al.

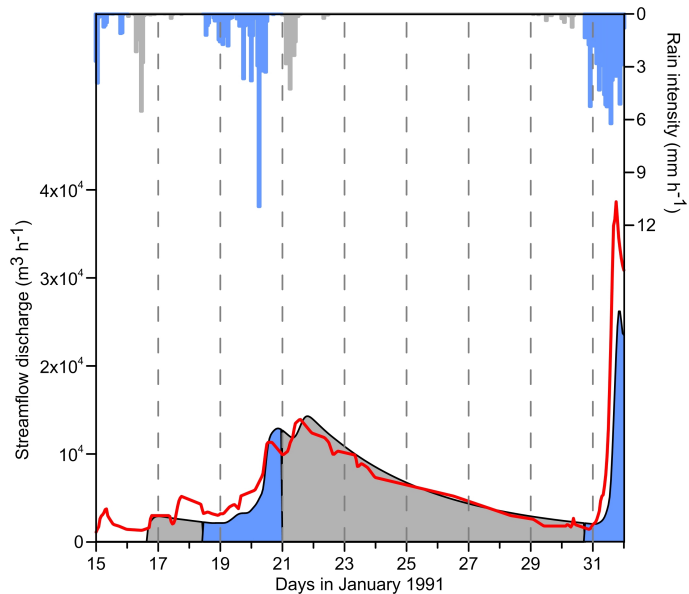


Figure 4. An example of rainfall and streamflow discharge from the upper Dalya catchment. Red line represents the observed hydrograph from hydrometric station and filled areas represent the hydrograph simulated by the SAC-SMA. Grey and blue colors represent the separation into different events of rainfall and streamflow.

[Title Page](#)[Abstract](#)[Introduction](#)[Conclusions](#)[References](#)[Tables](#)[Figures](#)[⏪](#)[⏩](#)[◀](#)[▶](#)[Back](#)[Close](#)[Full Screen / Esc](#)[Printer-friendly Version](#)[Interactive Discussion](#)

**Modeling convective
rainfall sensitivity to
climate change**

N. Peleg et al.

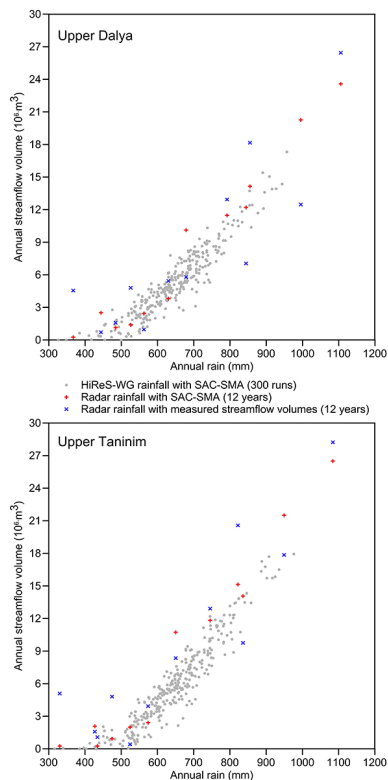


Figure 5. The annual streamflow volumes vs. the annual rainfall depth over the catchments. Three data samples are presented: observed rainfall from weather radar and observed volumes from hydrometric stations (blue), observed rainfall from weather radar and simulated volumes from SAC-SMA (red) and rainfall realizations generated by the HiReS-WG and simulated volumes from SAC-SMA (grey).

Modeling convective rainfall sensitivity to climate change

N. Peleg et al.

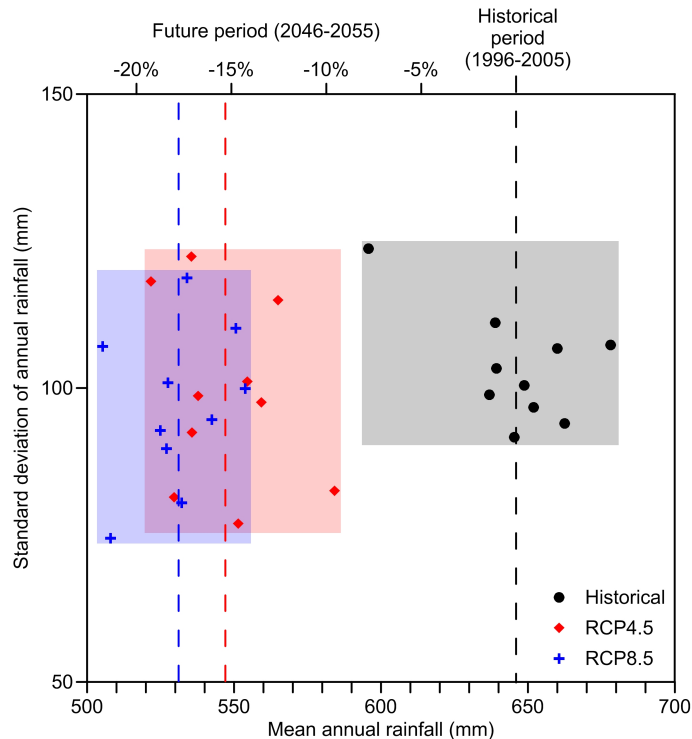


Figure 6. The standard deviation of the annual rainfall of each 30 year ensemble (black for historical, red for RCP4.5 scenario and blue for RCP8.5 scenario) is presented vs. the mean annual rainfall for each ensemble. Dashed lines represent the average annual rainfall of each ensemble, and colored boxes show the extent of change of annual rainfall mean and standard deviation for the different periods and scenarios. The rainfall ensembles represent upper Dalya and upper Taninim catchments.

[Title Page](#)
[Abstract](#)
[Introduction](#)
[Conclusions](#)
[References](#)
[Tables](#)
[Figures](#)
[⏪](#)
[⏩](#)
[◀](#)
[▶](#)
[Back](#)
[Close](#)
[Full Screen / Esc](#)
[Printer-friendly Version](#)
[Interactive Discussion](#)


Modeling convective rainfall sensitivity to climate change

N. Peleg et al.

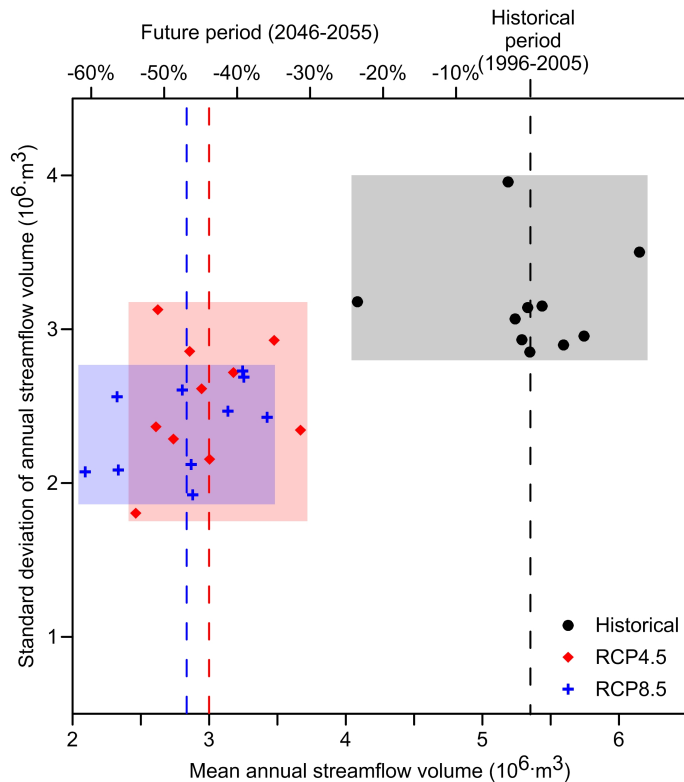


Figure 7. Same as Fig. 6 but for annual streamflow volume for upper Dalya catchment.

Title Page

Abstract

Introduction

Conclusions

References

Tables

Figures



Back

Close

Full Screen / Esc

Printer-friendly Version

Interactive Discussion



Modeling convective rainfall sensitivity to climate change

N. Peleg et al.

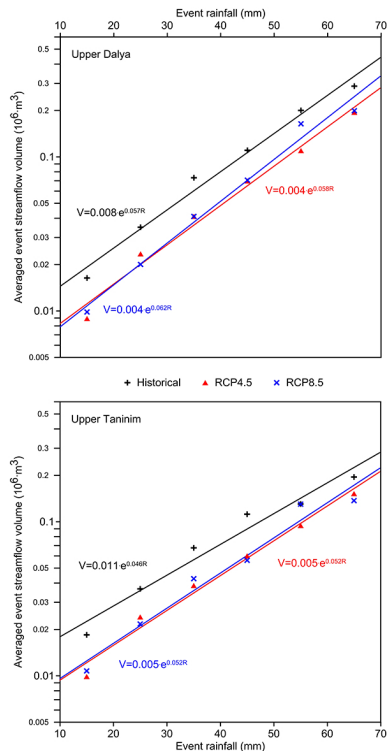


Figure 8. The average event streamflow volume vs. event rainfall depth for the historical period (black), RCP4.5 simulations (red) and RCP8.5 simulations (blue) with exponential fits (lines) for upper Dalya (upper graph) and upper Tananim (lower graph) catchments. Note that rainfall is quantized in 10 mm intervals and the points in the graph represent the average of all events within each 10 mm interval of rainfall.

Modeling convective rainfall sensitivity to climate change

N. Peleg et al.

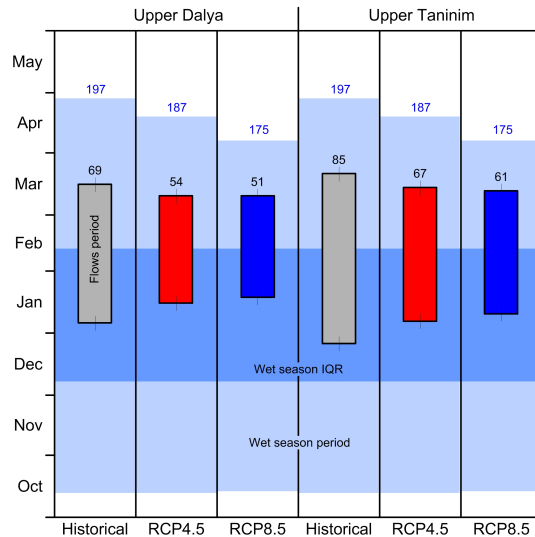


Figure 9. The period of the wet season (light blue, numbers represent duration in days), its interquartile range (IQR, dark blue) and the streamflow season (central boxes, numbers represent duration in days) for upper Dalya and Tanimim catchments for historical and future periods.

[Title Page](#)
[Abstract](#)
[Introduction](#)
[Conclusions](#)
[References](#)
[Tables](#)
[Figures](#)
[◀](#)
[▶](#)
[◀](#)
[▶](#)
[Back](#)
[Close](#)
[Full Screen / Esc](#)
[Printer-friendly Version](#)
[Interactive Discussion](#)
