

Interactive comment on “Evaluation of Mekong River Commission operational flood forecasts, 2000–2012” by T. C. Pagano

T. Pagano

climatron@gmail.com

Received and published: 22 March 2014

The attached files contain the revised manuscript

Please also note the supplement to this comment:

<http://www.hydrol-earth-syst-sci-discuss.net/10/C8251/2014/hessd-10-C8251-2014-supplement.pdf>

Interactive comment on Hydrol. Earth Syst. Sci. Discuss., 10, 14433, 2013.

C8251

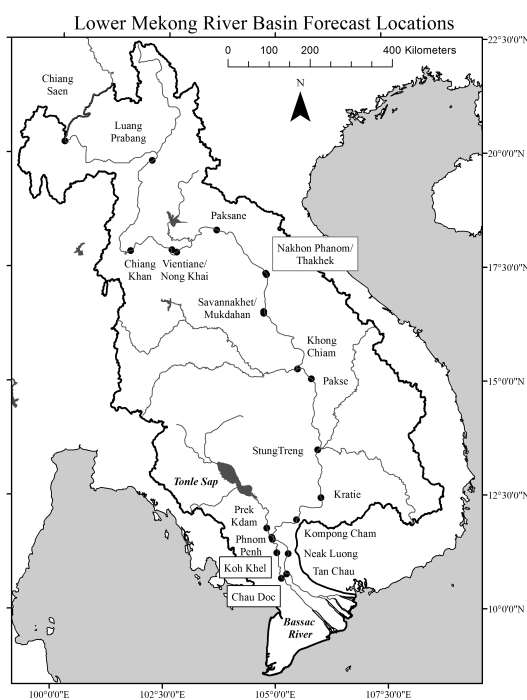


Fig. 1. Map of forecast locations (black circles). The river channel, significant water bodies and basin boundary are shown in grey outline.

C8252

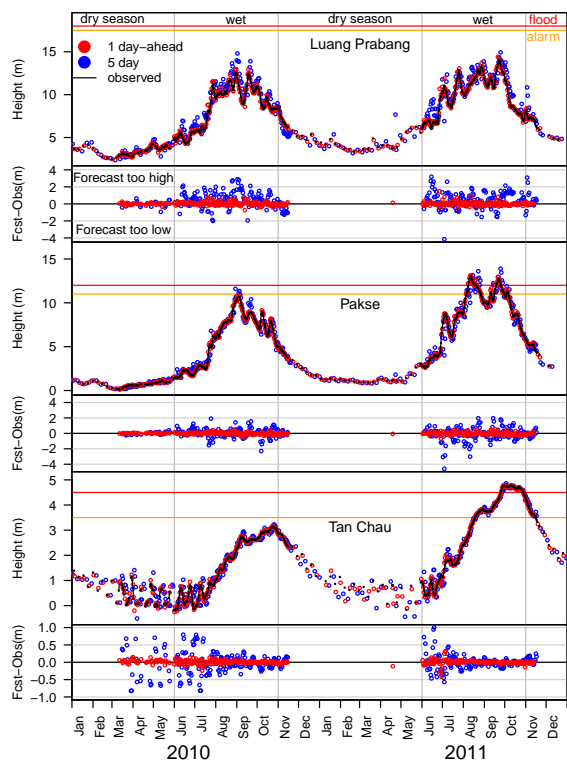


Fig. 2. Time series of river height observations (black lines) and forecasts (colored dots) for Luang Prabang (top), Pakse (middle) and Tan Chau (bottom) for 2010-2011.

C8253

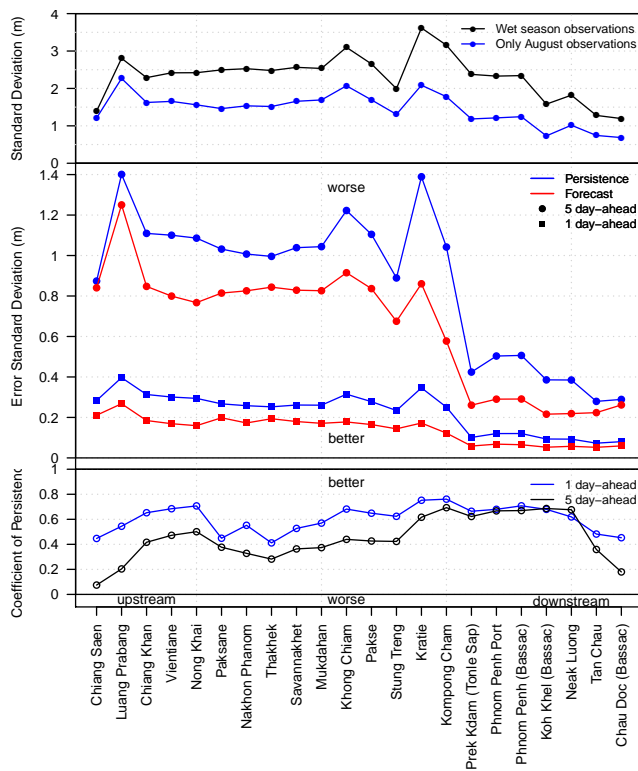


Fig. 3. Error standard deviation (middle) and Coefficient of Persistence (bottom) for locations upstream (left) to downstream (right) for wet-season forecasts from 2000-2012.

C8254

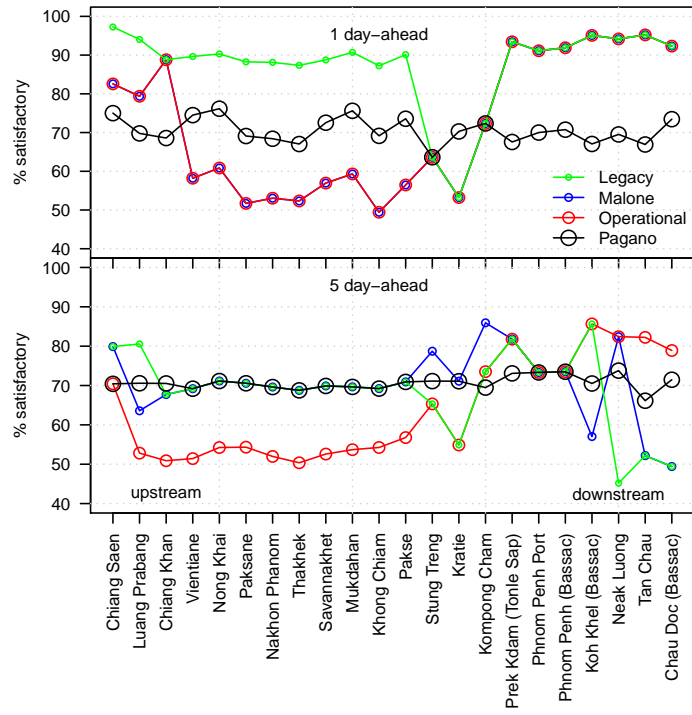


Fig. 4. Percentage Satisfactory for 1 (top) and 5 (bottom) day-ahead wet-season forecasts by location.

C8255

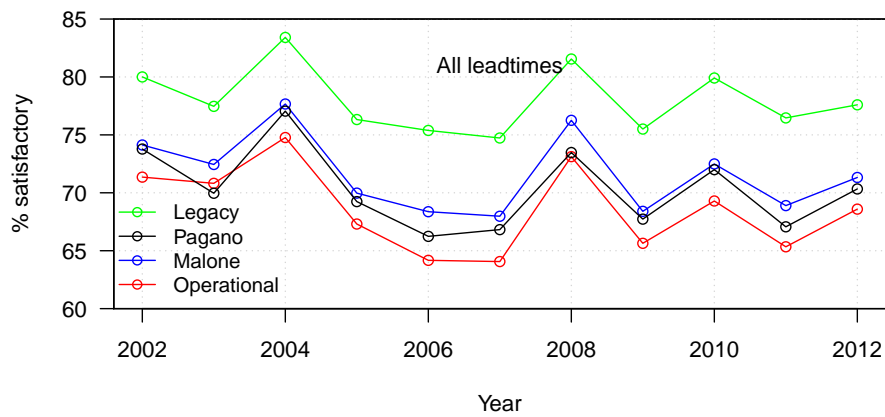


Fig. 5. Percentage Satisfactory for all lead-times and locations for each year (x-axis) using four different benchmarks.

C8256