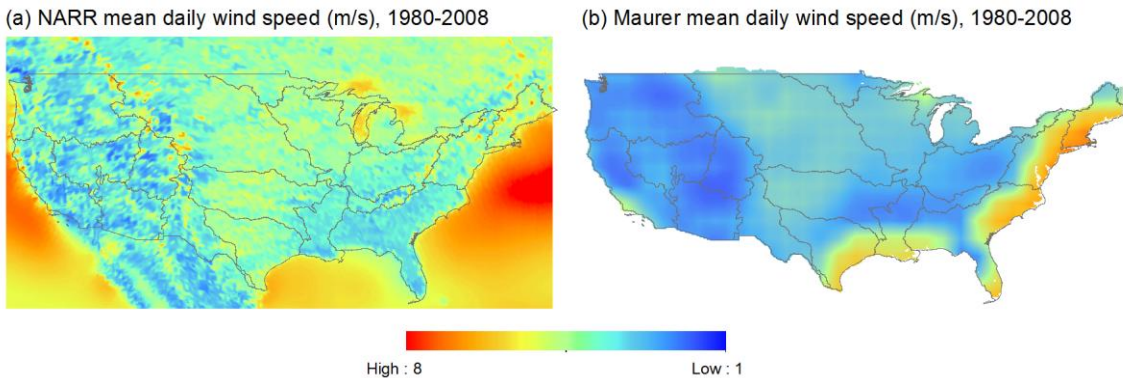


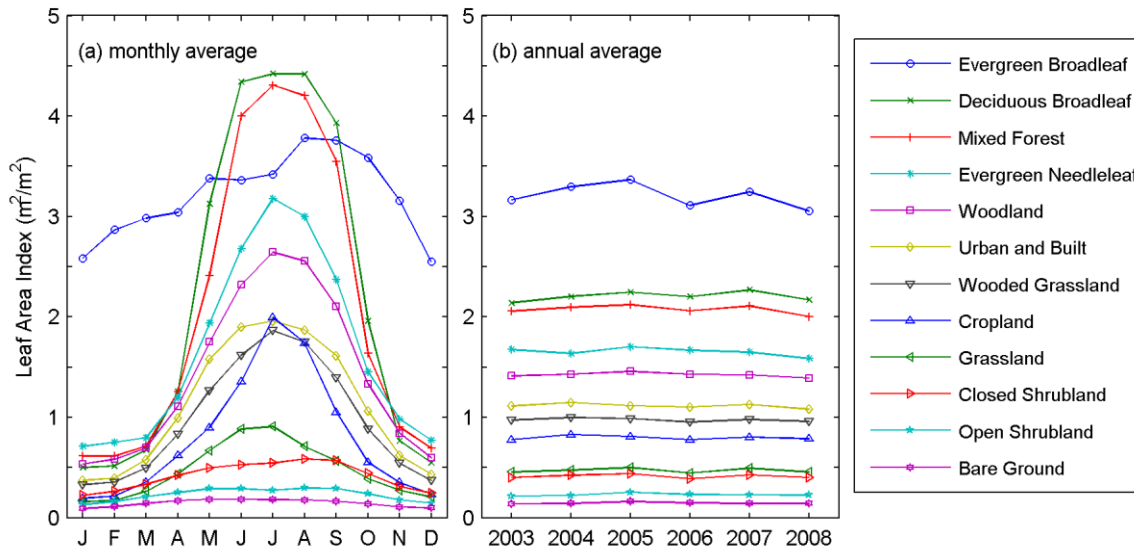
Response to Reviewer # 1 - Venkat Lakshmi
Review of paper hess-2013-0294 Oubeidillah et al.

This is a very well-written and well presented paper. My only very minor suggestion is to improve the size and quality of the fonts for figures 4, 5 and 6. Else this is a very interesting paper that will create a framework to use hydrological models to evaluate impact of climate change on water resources. I predict that this paper will be well-cited.

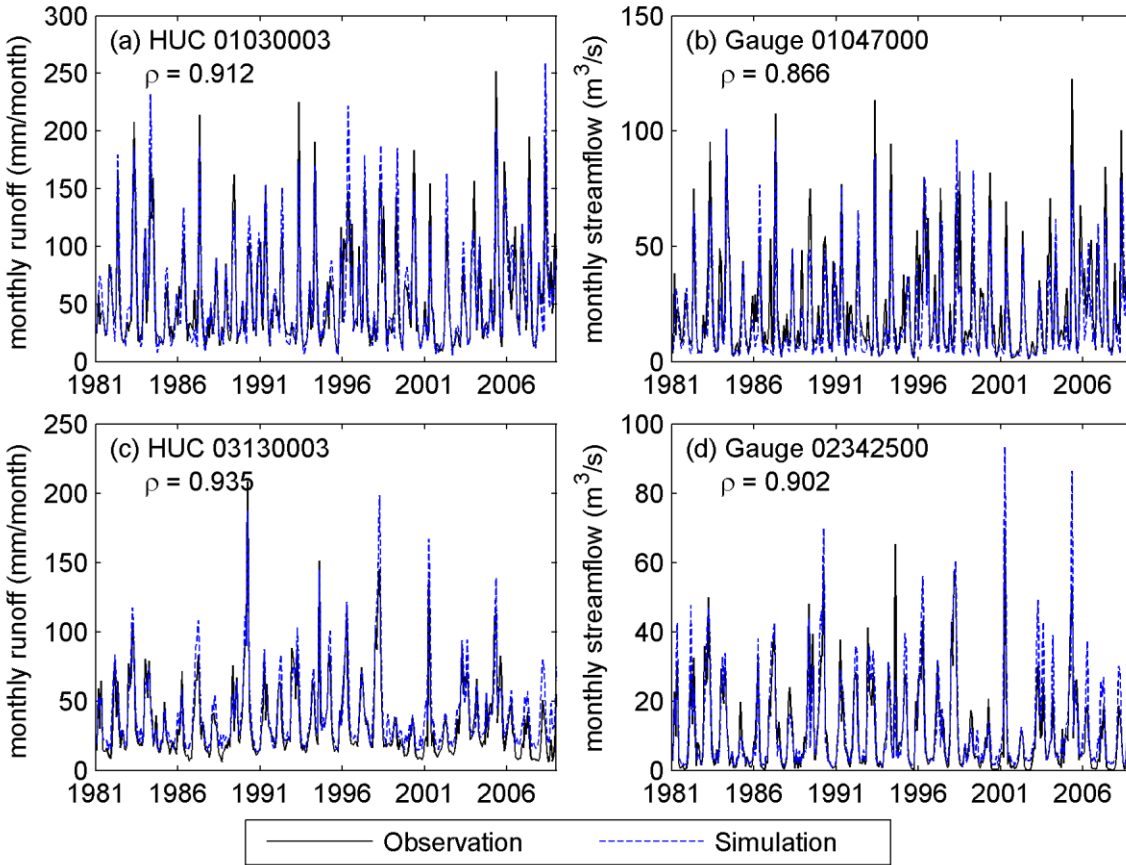
We appreciate the reviewer's comment and suggestion. The size and quality of figures 4, 5, and 6 (now figures 5, 6, and 8 in the revised manuscript) have been improved in the revised manuscript.



New Figure 5 in the revised manuscript. Maps of mean daily wind speed.



New Figure 6 in the revised manuscript. The MODIS leaf area index summarized by the UMD land cover classification.



New Figure 8 in the revised manuscript. The comparison between observed and simulated runoff (left panels) and observed and simulated streamflow (right panels). Gauge 01047000 is located at HUC01030003, and gauge 02342500 is located at HUC03130003.