



**Global runoff changes: results from CMIP5 and observations**

R. Alkama et al.

This discussion paper is/has been under review for the journal Hydrology and Earth System Sciences (HESS). Please refer to the corresponding final paper in HESS if available.

# Detection of global runoff changes: results from observations and CMIP5 experiments

**R. Alkama, L. Marchand, A. Ribes, and B. Decharme**

CNRM/GAME, Météo-France, CNRS – UMR3589, Toulouse, France

Received: 24 January 2013 – Accepted: 9 February 2013 – Published: 19 February 2013

Correspondence to: R. Alkama (ramdane.alkama@meteo.fr)

Published by Copernicus Publications on behalf of the European Geosciences Union.

[Title Page](#)

[Abstract](#) | [Introduction](#)

[Conclusions](#) | [References](#)

[Tables](#) | [Figures](#)

[⏪](#) | [⏩](#)

[◀](#) | [▶](#)

[Back](#) | [Close](#)

[Full Screen / Esc](#)

[Printer-friendly Version](#)

[Interactive Discussion](#)



## Abstract

This paper assesses the detectability of changes in global streamflow. First, a statistical detection method is applied to observed (no missing data) and reconstructed (gaps are filled in order to cover a larger area) streamflow. Observations show no change over the 1958–1992 period. Further, extension to 2004 over the same catchment areas using reconstructed data does not provide evidence of a significant change. Conversely, a significant change is found in reconstructed streamflow when a larger area is considered. These results suggest that changes in global streamflow are still unclear. Next, changes in streamflow as simulated by models from Coupled Model Intercomparison Project 5 (CMIP5) using the historical and future RCP 8.5 scenario are investigated. Most CMIP5 models are found to simulate the climatological streamflow reasonably well, except over South America and Africa. Change becomes significant between 2016 and 2040 for all but three models.

## 1 Introduction

Human influence has now been documented in several parts of the water cycle: atmospheric water vapour (e.g. Willett et al., 2007; Santer et al., 2007), land precipitation (e.g. Zhang et al., 2007), or land evapotranspiration (e.g. Douville et al., 2012). The case of runoff or rivers discharges is more contrasted. While some studies sought to have identified robust trends over some specific regions (e.g. Stahl et al., 2010 over Europe; Krakauer and Fung, 2008 over the US), other studies focused on the global scale have led to somewhat contradictory results. Based on 221 rivers, corresponding to 40 % of global continental runoff, Labat et al. (2005) documented an increasing global runoff at the end of the 20th century compared to the beginning. In contrast, based on data from 925 rivers, corresponding to 80 % of global runoff, Dai et al. (2009) show a slight decrease in global runoff over the second half of 20th century. This discrepancy can be explained by the differences either in the number of river-gauged stations used,

# HESSD

10, 2117–2140, 2013

## Global runoff changes: results from CMIP5 and observations

R. Alkama et al.

Title Page

Abstract

Introduction

Conclusions

References

Tables

Figures

⏪

⏩

◀

▶

Back

Close

Full Screen / Esc

Printer-friendly Version

Interactive Discussion

in the period of investigation, or in the method used to fill the gaps. Indeed, both studies were using some reconstructions (meaning gap filling) in order to provide a more comprehensive spatio-temporal coverage.

Over the last few years, several studies have attempted to explain the supposed observed global runoff trend, sometimes based on Land Surface Models (LSMs). Labat et al. (2005) were the first to relate the supposed positive runoff trend to global warming. They pinpointed a positive feedback between warming, an increase in ocean evaporation and an increase in continental precipitation. This assumption was then contradicted by many other studies. For example, using MOSES LSM, Gedney et al. (2006) explained this positive trend by the decrease in transpiration as a result of the stomatal closure due to rising atmospheric CO<sub>2</sub>. Using ORCHIDEE LSM, Piao et al. (2007) concluded that the land use and climate change are primarily responsible for the observed positive runoff trend. In the same way but using the LPJmL model, Gerten et al. (2008) find that the impact of stomatal closure and land use changes are very small and that the main factor explaining runoff change is precipitation change. The relative importance of the fertilization and stomatal closure effects and land use is still very model-dependent (Alkama et al., 2010). In a recent study, Alkama et al. (2011) hypothesize that the observed surface warming and the associated decline of permafrost and glaciers, not yet included in most LSMs, could have contributed to increased runoff at high latitude. They also emphasize that runoff trend is a regional scale issue, if not basin dependent. Finally, the majority of recent studies conclude that there was no significant global runoff trend in the late twentieth century (Milliman et al., 2008; Dai et al., 2009; Alkama et al., 2011).

This paper first aims to provide a novel assessment of the significance of recent observed changes. This assessment is based on the Temporal Optimal Detection (TOD) method (Ribes et al., 2010). While most previous studies consider global mean runoff, the TOD method is able to provide a single global diagnostic based on continental-scale mean runoffs. The TOD method is applied to both observed data only (meaning

## Global runoff changes: results from CMIP5 and observations

R. Alkama et al.

[Title Page](#)

[Abstract](#)

[Introduction](#)

[Conclusions](#)

[References](#)

[Tables](#)

[Figures](#)

[⏪](#)

[⏩](#)

[◀](#)

[▶](#)

[Back](#)

[Close](#)

[Full Screen / Esc](#)

[Printer-friendly Version](#)

[Interactive Discussion](#)



no missing data) and reconstructed data (i.e. a substantial fraction of streamflow time-series is missing and reconstructed by Dai et al., 2009).

With regard to future projections, an intensification of the hydrological cycle over the 21st century is widely assumed (e.g. Liu et al., 2012). However, regional patterns of human-induced changes in surface hydroclimate are complex and less certain than those in temperature. Indeed, both increases or decreases may be expected in future precipitation and runoff, depending on the region (Milly et al., 2005; Alkama et al., 2010). Our study investigates the large-scale runoff change over the late 20th and 21st century (with atmospheric greenhouse gas and aerosol concentrations from the RCP 8.5 scenario), as simulated by 14 CMIP5 Atmosphere Ocean General Circulation Models (AOGCMs). First, we assess the extent to which these simulated runoffs are consistent with observations. To this end, a comparison with observed streamflow is performed for the past few decades. Secondly, the same experiments are used to investigate how the anthropogenic perturbation (green house gases) may lead to different responses, depending on the model. Third, the same detection technique is applied to climate change scenarios in order to determine the significance of the simulated changes. The date at which the changes become significant is of particular interest, and provides some information with respect to the consistency or inconsistency between observed and simulated changes.

This paper primarily addresses the following three major issues:

1. How does global observed and reconstructed stream flow change over time?
2. Are simulated streamflow reasonably consistent with observations?
3. How will streamflow change in the future?

## HESSD

10, 2117–2140, 2013

### Global runoff changes: results from CMIP5 and observations

R. Alkama et al.

Title Page

Abstract

Introduction

Conclusions

References

Tables

Figures



Back

Close

Full Screen / Esc

Printer-friendly Version

Interactive Discussion

## 2 Methodology

### 2.1 Data

To the best of our knowledge, the most complete downstream discharge dataset in existence was collected by Dai et al. (2009). This data set represents historical monthly streamflow at the farthest downstream stations for the world's 925 largest ocean-reaching rivers from 1900 to 2004. However, the length and reliability of the available time series vary greatly from one river basin to another, and gaps are usually found. Observed streamflows are subject to some uncertainties, and in particular measurement uncertainty (e.g. related to the estimation of rating curves), potential homogeneity breaks, and missing values. Measurement errors are very difficult to address and no homogenized datasets are currently available, so the results provided in this study are conditional to this dataset, following previous work (e.g. Dai et al., 2009) that also investigated the recent trends in global streamflows. Gaps may be filled by using statistical techniques, numerical simulations using land surface models (LSMs), or a combination of both. In the present application, gaps were filled by applying a statistical linear correction to the river discharge simulated by a LSM with observed atmospheric forcings (see Dai et al., 2009). Such a reconstruction, however, is likely to introduce additional uncertainty. Results may depend on potential inaccuracy of the LSM used, homogeneity breaks in the atmospheric forcing, uncertainties coming from the observations (sometimes only a few years) used to calibrate the statistical correction, and others. As a consequence, this study carefully distinguishes between two different treatments. First, we analyse observed streamflows only, by considering time-series with no missing data. In this way, the number of the selected rivers is reduced to 161 over 1958–1992 period. This period was chosen in order to find an optimal compromise between spatial and temporal covering. Note that even under this restrictive treatment, the period investigated is similar to the one considered in Gedney et al. (2006) or Alkama et al. (2010). Second, in order to consider the larger spatio-temporal coverage available, we apply the same analysis to the dataset including reconstructed

## Global runoff changes: results from CMIP5 and observations

R. Alkama et al.

[Title Page](#)

[Abstract](#)

[Introduction](#)

[Conclusions](#)

[References](#)

[Tables](#)

[Figures](#)

[⏪](#)

[⏩](#)

[◀](#)

[▶](#)

[Back](#)

[Close](#)

[Full Screen / Esc](#)

[Printer-friendly Version](#)

[Interactive Discussion](#)



**Global runoff changes: results from CMIP5 and observations**

R. Alkama et al.

[Title Page](#)[Abstract](#)[Introduction](#)[Conclusions](#)[References](#)[Tables](#)[Figures](#)[⏪](#)[⏩](#)[◀](#)[▶](#)[Back](#)[Close](#)[Full Screen / Esc](#)[Printer-friendly Version](#)[Interactive Discussion](#)

streamflows. As linear regression cannot be used if there is too much missing data, Dai et al. (2009) succeeded in reconstructing only 687 gauging stations for the whole 1958–2004 period. We consider these 687 catchment areas over this period. Finally, a third, intermediate pre-processing is used in order to extend the “observations” up to 2004. We then consider the 161 rivers observed over the 1958–1992 period and allow missing/reconstructed values over the 1993–2004 period. This extension does include reconstructions, but the amount of reconstructed values is much reduced compared to the previous case (i.e. 687 rivers).

River discharge, in addition to be potentially influenced by anthropogenic climate change, may be affected by direct human intervention, due to water resource management (dams), water withdrawal (e.g. irrigation, industrial or domestic uses), changes in land use that impact evapotranspiration, and others. In terms of climate change detection attribution, these direct influences may be regarded as “confounding factors”, as they may cause a substantial trend without any climate change. Detailed estimation of such direct perturbations is very challenging and no global discharge data base of “naturalized streamflows” is currently available. However, several studies addressed the issue of quantifying these direct anthropogenic influences at the global scale, and suggested that they had minor impact on multi-year trends.

Wisser et al. (2010), have quantified the impact of irrigation and reservoir operations over the 20th century. They concluded that “the expansion of irrigation and the construction of reservoirs has significantly and gradually impacted hydrological components in individual river basins. Variations in the volume of water entering the oceans annually, however, are governed primarily by variations in the climate signal alone with human activities playing a minor role”. The late is shown to hold at the continental scale (i.e. for individual oceanic basin, which corresponds to scales similar to the ones considered here, but with a different clustering). Other studies (e.g. McClland et al., 2004; Adam et al., 2007; Adam and Lettenmaier, 2008) confirmed that dams have altered the seasonality of discharge, especially over up stream rivers, but are note responsible for changing annual values. Then, the impacts of land-use changes on land surface

## Global runoff changes: results from CMIP5 and observations

R. Alkama et al.

[Title Page](#)

[Abstract](#)

[Introduction](#)

[Conclusions](#)

[References](#)

[Tables](#)

[Figures](#)

[⏪](#)

[⏩](#)

[◀](#)

[▶](#)

[Back](#)

[Close](#)

[Full Screen / Esc](#)

[Printer-friendly Version](#)

[Interactive Discussion](#)

hydrology are still debated. On the one hand, when irrigation is neglected, land use can have a significant influence on runoff via a decrease in surface evapotranspiration (Piao et al., 2007). On the other hand, Lui et al. (2008) and Sun et al. (2008) indicate that deforestation over China, associated with irrigation, leads to increased evapotranspiration over the 20th century. Other studies, over individual river basins, suggested that the sign of land-use induced change was unclear (e.g. Twine et al., 2004 over the Mississippi river basin; VanShaar et al., 2002, over the Columbia River basin). Finally, some direct human influences via other activities have also been investigated and shown to have limited impact. For instance, McClland et al. (2004) demonstrated that increased forest fire frequency and severity may have contributed to changes in discharge, but can not be considered as a major driver.

We also used simulated runoff by different models from to the Coupled Model Inter-comparison Project Phase 5 (CMIP5). Those runs supply three kinds of experiments: historical runs in which all external forcings come from observations, future runs which use greenhouse gas and aerosol emissions from the RCP 8.5 scenario, and finally piControl runs in which pre-industrial forcings are constant. The piControl runs are used to evaluate the internal climate variability. There are four RCPs types of possible future scenarios, and the RCP 8.5 involves the highest greenhouse gas concentrations at the end of the 21th century. It expects to rich the radiative forcing of  $8.5 \text{ W m}^{-2}$  ( $\sim 4$  times more than the actual value) at the end of 2100 which correspond approximately to 1370 ppmv of atmospheric  $\text{CO}_2$  concentration. This scenario involves an intensive use of fossil fuels, with little mitigation stringency.

For this entire study, an ensemble of 8 zones where river basins are merged by continent and climate area was selected. The motivation for separating the northern cold climate from the tropics comes from Dai et al. (2009) and Alkama et al. (2011), which found significant runoff increase at high latitude that cannot be explained by the atmospheric forcing. While, the motivation of merging all of African's river basins in a single zone, even existing of large wide of climates, is coming from an ensemble of previous studies that shows that generally all largest African river basins had significantly

decreased over the second half of 20th century (e.g. Alkama et al., 2011; Dai et al., 2009; Gedney et al., 2006; Labat et al., 2004). The 8 selected zones are North America, Central America, South America, North Europe (including arctic basins), South Europe, North Asia (corresponding to Siberia), South Asia (including Oceania) and Africa (Fig. 1).

Three steps are used before comparing the modelled runoff by different CMIP5 experiments and observations over the 8 regions: (1) interpolate using bilinear method all of the CMIP5 modelled runoff into the same grid ( $0.5^\circ \times 0.5^\circ$ ); (2) compute the river basins at the  $0.5^\circ \times 0.5^\circ$  grid. To be coherent with the data, river basins are defined at the known latitude and longitude of the observed gauged stations which are different to the river mouth; (3) simulated runoff are then averaged over the computed river basins and merged into the 8 defined zones in the Fig. 1.

## 2.2 Statistical method

Detection is the process of demonstrating that an observed change is significantly different (in a statistical sense) that cannot be explained by natural internal variability. The statistical method used for detection is the Temporal Optimal Detection method (Ribes et al., 2010). We review the main concepts here but refer to Ribes et al. (2010) for full details about the method. The TOD method is based on a linear model:

$$Y(s, t) = a(s) + b(s)x(t) + \varepsilon(s, t) \quad (1)$$

where  $y(s, t)$  denotes the observed streamflow at location  $s$  and time  $t$ , as is the climatological mean,  $b(s)$  and  $x$  are respectively the spatial and temporal patterns of change, and  $\varepsilon(s, t)$  denotes the internal variability. TOD basically assumes that the temporal pattern of change is known while the spatial pattern is not. This is a substantial difference from other methods, such as optimal fingerprinting, in which the full spatio-temporal pattern of change is assumed to be known (up to a scaling factor, e.g. Hasselmann, 1993). This assumption makes the TOD method particularly suitable here, because the spatial pattern of changes in global runoff is still under debate and

## Global runoff changes: results from CMIP5 and observations

R. Alkama et al.

Title Page

Abstract

Introduction

Conclusions

References

Tables

Figures



Back

Close

Full Screen / Esc

Printer-friendly Version

Interactive Discussion





somewhat model-dependent (see Sect. 3.2). While assumed to be known, the temporal pattern of change is commonly evaluated from simulations. In order to base our study on a very simple temporal pattern that is not model-dependent, we used only linear trends (i.e.  $x(t) = t$ ). Note that the use of a linear trend instead of a potentially more complex smooth temporal pattern may be suboptimal. However, over short periods like the ones investigated here for observation (35 or 45 yr) the non-linearity of the change is probably not the dominant feature.

Regarding internal variability, the TOD method assumes that  $\varepsilon$  has a red noise structure (or autoregressive process of order 1, AR1). This assumption means, e.g. that the autocorrelation function decreases exponentially, with no long-range memory effect. This seems reasonable here, as the internal variability simulated by climate models (pre-industrial control simulations) is very consistent with such processes which is known as Hurst phenomenon in the hydrology. An AR1 process is then described by a single parameter, which is the lag-one autocorrelation  $\alpha$ . The choice of  $\alpha$  is here based on the analysis of control simulations (see Fig. 2a for the value of  $\alpha$  found in individual models), which are expected to provide a physically-based description of internal variability. Figure 2a shows the  $\alpha$  value as estimated from the time-series of global runoff, for each CMIP5 control simulation. Although some discrepancies appear between different models, all values are between 0.04 and 0.3 with a medium value close to 0.2. Figure 2b–d illustrates the distribution of the P-value if the TOD test is applied to different segments of 50 yr periods of all control simulations using  $\alpha = 0, 0.2, 0.3$  respectively. If internal variability is properly accounted for, this distribution should be uniform between 0 and 1. Figure 2b, c and d suggests that the more suitable choice is  $\alpha = 0.2$  (distribution close to uniform), while  $\alpha = 0.3$  (resp.  $\alpha = 0$ ) is too conservative (permissive) with less (more) than expected values under the 5 % threshold. In the following, we primarily discuss the results assuming  $\alpha = 0.2$  or  $\alpha = 0.3$  (which makes the detection more conservative and corresponds to the highest value found in individual models). The  $\alpha > 0.2$  may reflect an important ground water contribution to the stream

# HESSD

10, 2117–2140, 2013

## Global runoff changes: results from CMIP5 and observations

R. Alkama et al.

Title Page

Abstract

Introduction

Conclusions

References

Tables

Figures

⏪

⏩

◀

▶

Back

Close

Full Screen / Esc

Printer-friendly Version

Interactive Discussion



flow. The results obtained with  $\alpha = 0$  (i.e. white noise) are also shown in some cases in order to provide a lower bound where no memory effect is accounted for.

Finally, an important feature of the method with respect to our study is that it performs a multivariate diagnosis; i.e. it provide one single statistical diagnosis based on regional (continental-scale) streamflow. In particular, a change that generates increases or decreases in runoff depending on the region would be captured by this method. The TOD method as implemented here may then be regarded as a strategy for testing trend significance that allows the change to be spatially non-uniform and takes into account a non-white internal variability. In particular, it differs from testing the significance of each regional trend individually, as a single test is performed for all regions simultaneously here.

### 3 Results

#### 3.1 Statistical test on observed and reconstructed runoffs

The coverage of the 161 resp. 687 rivers worldwide is shown in Fig. 1. Some regions (e.g. western part of Asia, desert regions and southern part of South America) suffer from lack of data. Indeed, only 31 % (43 %) of global land area excluding Antarctica are covered by the 161 (687) rivers basins which correspond to about 42 % (60 %) of global land discharge.

We first applied the TOD method to observed runoff over the 1958–1992 period, based on 8 zones in which observed streamflow at 161 downstream gauged stations are merged. Results are shown in Fig. 3a in terms of P-value, for three values of the  $\alpha$  coefficient. The P-value of year 1980 is obtained by applying the test to the data before 1980, i.e. the 1958–1980 period. This allows us to analyze the time evolution of the P-value. As may be expected, larger year-to-year variations are observed at the beginning of the period compared to the end, as one single year has stronger relative impact on the P-value (the size of the sample being smaller).

## Global runoff changes: results from CMIP5 and observations

R. Alkama et al.

Title Page

Abstract

Introduction

Conclusions

References

Tables

Figures

⏪

⏩

◀

▶

Back

Close

Full Screen / Esc

Printer-friendly Version

Interactive Discussion



Figure 3a (left) shows that the P-value remains higher than the significance threshold, 0.05, over the 1958–1992 period. This reveals no significant change in observed streamflow until 1992. This result is very robust here as it is obtained even under the white-noise (i.e.  $\alpha = 0$  which is very unlikely) assumption.

5 However, one can wonder what these results could have been over a more recent period. TOD is then applied over the same 161 river basins for the whole 1958–2004 period. As mentioned above, this extension requires to use a few reconstructed data over the 1993–2004 period, and cannot be regarded as “observations only”. After 1992, Fig. 3a reveals that changes are still not detected for  $\alpha = 0.2$  or  $\alpha = 0.3$ , as the P-value remains mainly higher than 0.1. It permits us to conclude that there is no significant change in observed global runoff on the observed 161 gauging stations from 1958 to 2004. Note that the P-value for  $\alpha = 0$  becomes lower than 0.05 but, as discussed before, this does not allow us to reasonably claim that a change is detected. The relative anomaly (trend over the whole period compared to the runoff mean value) distribution in regional runoff shown in Fig. 3a (right) reinforces this conclusion. Trends are rather small compared to the mean streamflow, except over Africa, where it reaches  $-30\%$ . This result is confirmed by applying the TOD test over each individual region: a significant change in runoff is detected only over Africa since 1980 (not shown) which is consistent with the previously published results (e.g. Alkama et al., 2011) which pinpoint to a large decrease in precipitation and runoff over the 2nd half of 20th century.

20 In the same way, TOD is applied over the 687 river basins and over the same period (1958–2004). Figure 3b shows a significant change in reconstructed runoff since 2000 at the 95 % significance level for  $\alpha = 0$  and, to a lesser extent, for  $\alpha = 0.2$ . For  $\alpha = 0.2$ , the P-value remains below but close to the significance level of 5 %. For  $\alpha = 0.3$ , no changes are found. Here, we conclude that a change is detected, because detection does occur with a medium value of  $\alpha$ . This result is not very robust, however, as detection no longer holds with a more conservative choice of  $\alpha$ . Taking into account new rivers (687 rather than 161) and/or reconstructed rather than observed streamflow then seems to impact the results. However, the distribution and intensity of the relative

## Global runoff changes: results from CMIP5 and observations

R. Alkama et al.

Title Page

Abstract

Introduction

Conclusions

References

Tables

Figures

⏪

⏩

◀

▶

Back

Close

Full Screen / Esc

Printer-friendly Version

Interactive Discussion

discharge anomaly are not notably affected (Fig. 3b). Africa is still the only region that exhibits a significant (negative) runoff trend.

### 3.2 Observed vs. simulated runoff

The evaluation of the CMIP5 simulated runoff was performed over the 8 zones and at the global scale corresponding to the 161 river basins. Figure 4 shows the temporal evolution of the yearly mean runoff ( $\text{mmd}^{-1}$ ) from 1958 to 2100 for each of the 14 CMIP5 models. The temporal evolution of the observed runoff from 1958 to 1992 corresponding to the same zones is also shown. There are two outlying models, BCC and GISS, which show a large underestimation of both the global and the regional runoffs as well as a low variability. At the global scale, all other CMIP5 models seem to simulate runoff in terms of mean state reasonably well (simulated runoff = observed runoff  $\pm$  25 %). They generally underestimate global runoff slightly, except for the MIROC model, which simulates a global runoff overestimated by about 20 %. The runoff simulated over South America is underestimated by all models. The simulated runoff is also overestimated by the BCC, GISS and INM models over Africa. Over this continent, the runoff simulated by both CNRM-CERFACS and MPMIP is closer to the observations.

Even the different bias existing in different model simulation, no bias correction methods are done in this study. It is known that bias correction method can alter the inter-annual variability of the discharge of small river basins and consequently could impact the significance of the trend signal. Whereas, the inter-annual variability of the large river basins and especially when regionally merged are relatively well simulated by GCMs (e.g. Milly et al., 2005; Nohara et al., 2006). Thus, the bias correction method had a small impact on the detection method used in this study.

Over the 21st century, all models show a positive global runoff trend except the INM model, in which the simulated global runoff decreases. At the regional scale, all models are in agreement and show a positive trend over Northern Asia, Scandinavia, North America and South Asia. In contrast, the models simulate a negative trend over South

## Global runoff changes: results from CMIP5 and observations

R. Alkama et al.

[Title Page](#)

[Abstract](#)

[Introduction](#)

[Conclusions](#)

[References](#)

[Tables](#)

[Figures](#)

[⏪](#)

[⏩](#)

[◀](#)

[▶](#)

[Back](#)

[Close](#)

[Full Screen / Esc](#)

[Printer-friendly Version](#)

[Interactive Discussion](#)



Europe, except CNRM-CERFACS and IAP models, which are positive. For the other regions (South America and Africa), the models are in disagreement amongst themselves. For example, over South America, a negative trend is simulated by CCCMA and CSIRO, while MIROC, NCC, IPSL show a positive trend. Over Africa, the simulated runoff increases in CNRM-CERFACS, MIROC, MPMIP, NCAR, CCCMA, IPSL and NCC, decreases in CSIRO. Over Central America, models show no clear trend except GFDL (positive trend) and NCC and IAP (negative trend).

### 3.3 Statistical test on simulated runoff

In Fig. 5, the TOD test is applied to each CMIP5 over the 161 global river basins still merged into 8 zones, and over the whole 1958–2100 period. In order to highlight an average behavior, the median of these 14 P-values is computed each year, and its time evolution is illustrated. The P-values are also shown for the observed and the reconstructed data presented before. Note that the P-values of observed and simulated runoff are calculated over the 161 river basins whereas reconstructed data are computed over the 687 river basins. The P-values obtained from the CMIP5 runoff calculated over the 687 rivers are very similar to those computed over the 161 rivers. The results are only shown for  $\alpha = 0.2$  (medium value). We define the date at which detection occurs as the first year for which the P-value remains lower than the 0.05 threshold up to 2100. The two models that simulate low runoff variability, BCC and GISS, are the first to detect a significant runoff change (in 2002 and 2005, respectively). The INM model, simulating no global significant trend, is the last to detect a significant change, in 2060. All other models detect a significant change between 2016 and 2040. This means that changes in runoff, as simulated by current climate models, are expected to become significant in the coming decades. As a consequence, the result previously obtained on observed runoff (161 river basins) appears to be very consistent with climate model projections. The result obtained on reconstructed runoff (687 river basins) seems less consistent, as a change was found from 2000 onwards. In particular, Fig. 5 suggests that the P-value computed from reconstructed runoff is on the border (if not

# HESSD

10, 2117–2140, 2013

## Global runoff changes: results from CMIP5 and observations

R. Alkama et al.

Title Page

Abstract

Introduction

Conclusions

References

Tables

Figures

⏪

⏩

◀

▶

Back

Close

Full Screen / Esc

Printer-friendly Version

Interactive Discussion



outside) of the set of climate model projections. This feature, together with the substantial difference between the results obtained on observed and reconstructed data, may call into question the quality of reconstructions, and/or the accuracy of climate models projections.

## 4 Summary and conclusions

In this work, the TOD statistical test (Ribes et al., 2010) is used to evaluate the possible changes on recent and future (RCP 8.5 conditions) runoff, based on fourteen CMIP5 experiments and streamflow data from Dai et al. (2009). This evaluation is made over 8 zones, merging the world's 161 largest rivers. Our analysis suggests some answers to the three issues raised in the introduction.

### 1. How does global observed and reconstructed streamflow change over time?

No significant runoff change is found in the observations over the whole set of 161 rivers from 1958 to 1992. Extension to 2004, using reconstructed streamflows over the same catchment areas, does not lead to a different conclusion. This confirms previous results by Dai et al. (2009) and Alkama et al. (2011). In contrast, reconstructed data over 687 rivers shows significant change at the 95 % confidence level over the 1958–2004 period, at least with a medium assumption regarding the internal variability persistence. This change is not robust to a more conservative choice regarding internal variability. This result seems rather contradictory with the conclusions by Dai et al. (2009) who found no significant trend on global rivers discharge based on the same data. This discrepancy much likely comes from differences in the statistical method used. While Dai et al. (2009) where only looking at the global mean time-series, our diagnosis is based on continental scale discharge, and can be explained by opposite changes over different continents, that tend to compensate themselves and result in little change on the global mean.

## Global runoff changes: results from CMIP5 and observations

R. Alkama et al.

Title Page

Abstract

Introduction

Conclusions

References

Tables

Figures

⏪

⏩

◀

▶

Back

Close

Full Screen / Esc

Printer-friendly Version

Interactive Discussion







*Acknowledgements.* The authors acknowledges Dai et al. (2009) for their efforts to collect the global runoff data, as well as the modeling groups that contributed to the data archive at PCMDI. We also thank Zoubeida Bargaoui for her constructive comments. This work was supported by CLASSIQUE ANR French project (CNRS-INSU) and COMBINE European project.



The publication of this article is financed by CNRS-INSU.

## References

- Adam, J. C. and Lettenmaier, D. P.: Application of new precipitation and reconstructed streamflow products to streamflow trend attribution in northern Eurasia, *J. Climate*, 21, 1807–1828, doi:10.1175/2007JCLI1535.1, 2008.
- Adam J. C., Haddeland, I., Su, F., and Lettenmaier, D. P.: Simulation of reservoir influences on annual and seasonal streamflow changes for the Lena, Yenisei and Ob rivers, *J. Geophys. Res.*, 112, D24114, doi:10.1029/2007JD008525, 2007.
- Alkama, R., Kageyama, M., and Ramstein, G.: Relative contributions of climate change, stomatal closure, and leaf area index changes to 20th and 21st century runoff change: a modelling approach using the Organizing Carbon and Hydrology in Dynamic Ecosystems (ORCHIDEE) land surface model, *J. Geophys. Res.*, 115, D17112, doi:10.1029/2009JD013408, 2010.
- Alkama, R., Decharme, B., Douville, H., and Ribes, A.: Trends in global and basin-scale runoff over the late twentieth century: methodological issues and sources of uncertainty, *J. Climate*, 24, 3000–3014, doi:10.1175/2010JCLI3921.1, 2011.
- Dai, A., Qian, T., and Trenberth, K. E.: Changes in continental freshwater discharge from 1948 to 2004, *J. Climate*, 22, 2773–2791, 2009.

## Global runoff changes: results from CMIP5 and observations

R. Alkama et al.

Title Page

Abstract

Introduction

Conclusions

References

Tables

Figures

⏪

⏩

◀

▶

Back

Close

Full Screen / Esc

Printer-friendly Version

Interactive Discussion





## Global runoff changes: results from CMIP5 and observations

R. Alkama et al.

[Title Page](#)

[Abstract](#)

[Introduction](#)

[Conclusions](#)

[References](#)

[Tables](#)

[Figures](#)

[⏪](#)

[⏩](#)

[◀](#)

[▶](#)

[Back](#)

[Close](#)

[Full Screen / Esc](#)

[Printer-friendly Version](#)

[Interactive Discussion](#)

Douville, H., Decharme, B., Ribes, A., Alkama, R., and Sheffield, J.: Anthropogenic influence on multi-decadal changes in reconstructed global evapotranspiration, *Nat. Clim. Change*, 3, 59–62, doi:10.1038/nclimate1632, 2013.

Gedney, N., Cox, P. M., Betts, R. A., Boucher, O., Huntingford, C., and Stott, P. A.: Detection of a direct carbon dioxide effect in continental river runoff records, *Nature*, 439, 835–838, doi:10.1038/nature04504, 2006.

Gerten, D., Rost, S., von Bloh, W., and Lucht, W.: Causes of change in 20th century global river discharge, *Geophys. Res. Lett.*, 35, L20405, doi:10.1029/2008GL035258, 2008.

Hasselmann, K.: Optimal fingerprints for the detection of time-dependent climate change, *J. Climate*, 6, 1957–1971, 1993.

IPCC: Climate change 2007, in: *The Physical Science Basis, Contribution of Working Group I to the Fourth Assessment Report of the Intergovernmental Panel on Climate Change*, edited by: Solomon, S., Qin, D., Manning, M., Chen, Z., Marquis, M., Averyt, K. B., Tignor, M., and Miller, H. L., Cambridge University Press, Cambridge, UK and New York, NY, USA, 504–511, 2007.

Krakauer, N. Y. and Fung, I.: Mapping and attribution of change in streamflow in the coterminous United States, *Hydrol. Earth Syst. Sci.*, 12, 1111–1120, doi:10.5194/hess-12-1111-2008, 2008.

Labat, D., Aeris, Y. G., Probst, J. L., and Guyot, J. L.: Evidence for global runoff increase related to climate warming, *Adv. Water Res.*, 27, 631–642, 2004.

Lambert, F. H., Stott, P. A., Allen, M. R., and Palmer, M. A.: Detection and attribution of changes in 20th century land precipitation, *Geophys. Res. Lett.*, 31, L10203, doi:10.1029/2004GL019545, 2004.

Liu, C., Allan, R. P., and Huffman, G. J.: Co-variation of temperature and precipitation in CMIP5 models and satellite observations, *Geophys. Res. Lett.*, 39, L13803, doi:10.1029/2012GL052093, 2012.

Liu, M., Tian, G., Ren, W., Zhang, C., and Lui, J.: Effects of the and land-cover change on the evapotranspiration and water yield in China during 1900–2000, *J. Am. Water Resour. Assoc.*, 44, 1193–1207, 2008.

McClelland, J. W., Holmes, R. M., Peterson, B. J., and Stieglitz, M.: Increasing river discharge in the Eurasian Arctic: consideration of dams, permafrost thaw, and fires as potential agents of change, *J. Geophys. Res.*, 109, D18102, doi:10.1029/2004JD004583, 2004.

**Global runoff changes: results from CMIP5 and observations**

R. Alkama et al.

[Title Page](#)[Abstract](#)[Introduction](#)[Conclusions](#)[References](#)[Tables](#)[Figures](#)[⏪](#)[⏩](#)[◀](#)[▶](#)[Back](#)[Close](#)[Full Screen / Esc](#)[Printer-friendly Version](#)[Interactive Discussion](#)

- Milliman, J. D., Farnsworth, K. L., Jones, P. D., Xu, K. H., and Smith, L. C.: Climatic and anthropogenic factors affecting river discharge to the global ocean, 1951–2000, *Global Planet. Change*, 62, 187–194, 2008.
- 5 Milly, P. C. D., Dunne, K. A., and Vecchia, A. V.: Global pattern of trends in stream-flow and water availability in a changing climate, *Nature*, 438, 347–350, doi:10.1038/nature04312, 2005.
- Piao, S., Friedlingstein, P., Ciais, P., de Noblet Ducoudre, N., Labat, D., and Zaehle, S.: Changes in climate and land use have a larger direct impact than rising CO<sub>2</sub> on global river runoff trends, *P. Natl. Acad. Sci. USA*, 104, 15242–15247, 2007.
- 10 Ribes, A., Azais, J. M., and Planton, S.: A method for regional climate change detection using smooth temporal patterns, *Clim. Dynam.*, 35, 391–406, doi:10.1007/s00382-009-0670-0, 2010.
- Santer, B. D., Mears, C., Wentz, F. J., Taylor, K. E., Gleckler, P. J., Wigley, T. M., Barnett, T. P., Boyle, J. S., Brüggemann, W., Gillett, N. P., Klein, S. A., Meehl, G. A., Nozawa, T., Pierce, D. W., Stott, P. A., Washington, W. M., and Wehner, M. F.: Identification of human-induced changes in atmospheric moisture content, *P. Natl. Acad. Sci. USA*, 104, 15248–15253, 2007.
- 15 Stahl, K., Hisdal, H., Hannaford, J., Tallaksen, L. M., van Lanen, H. A. J., Sauquet, E., Demuth, S., Fendekova, M., and Jódar, J.: Streamflow trends in Europe: evidence from a dataset of near-natural catchments, *Hydrol. Earth Syst. Sci.*, 14, 2367–2382, doi:10.5194/hess-14-2367-2010, 2010.
- 20 Sun, G., Zuo, C., Liu, S., Liu, M., McNulty, S. G., and Vose, J. M.: Watershed evapotranspiration increased due to changes in vegetation composition and structure under a subtropical climate, *J. Am. Water Resour. Assoc.*, 44, 1164–1175, 2008.
- Twine, T. E., Kucharik, C. J., and Foley, J. A.: Effects of land cover change on the energy and water balance of the Mississippi River basin, *J. Hydrometeorol.*, 5, 640–655, 2004.
- 25 VanShaar, J. R., Haddeland, I., and Lettenmaier, D. P.: Effects of land-cover changes on the hydrological response of interior Columbia River basin forested catchments, *Hydrol. Process.*, 16, 2499–2520, 2002.
- Willett, K. M., Gillett, N. P., Jones, P. D., and Thorne, P. W.: Attribution of observed surface humidity changes to human influence, *Nature*, 449, 710–712, doi:10.1038/nature06207, 2007.
- 30 Wisser, D., Fekete, B. M., Vörösmarty, C. J., and Schumann, A. H.: Reconstructing 20th century global hydrography: a contribution to the Global Terrestrial Network-Hydrology (GTN-H), *Hydrol. Earth Syst. Sci.*, 14, 1–24, doi:10.5194/hess-14-1-2010, 2010.

Zhang, X., Zwiers, F. W., Hegerl, G. C., Lambert, F. H., Gillett, N. P., Solomon, S., Stott, P. A., and Nozawa, T.: Detection of human influence on twentieth-century precipitation trends, *Nature*, 448, 461–464, doi:10.1038/nature06025, 2007.

# HESSD

10, 2117–2140, 2013

## Global runoff changes: results from CMIP5 and observations

R. Alkama et al.

Title Page

Abstract

Introduction

Conclusions

References

Tables

Figures



Back

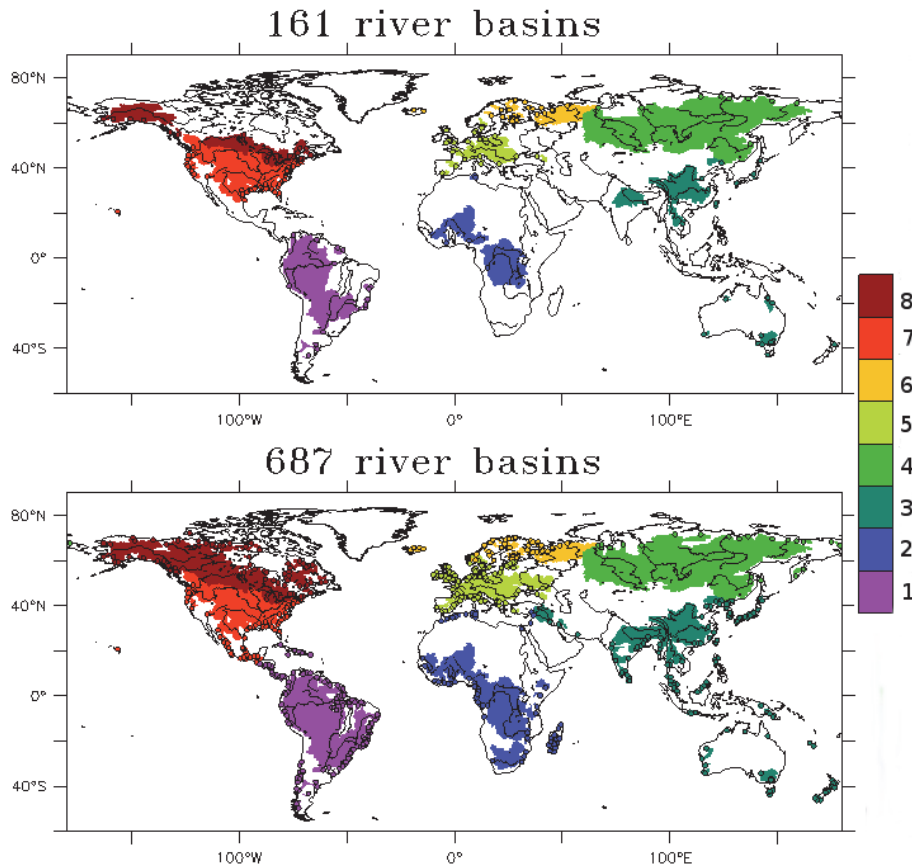
Close

Full Screen / Esc

Printer-friendly Version

Interactive Discussion





**Fig. 1.** Coverage of 161 (687) river basins up (down) over the 8 selected zones which are: 1 South America, 2 Africa, 3 South Asia including Oceania, 4 North Asia corresponding to Siberia, 5 South Europe, 6 North Europe including arctic basins, 7 Central America and 8 North America. The circles represent the in-situ gauged stations for each river accounted for in this study.

**Global runoff changes: results from CMIP5 and observations**

R. Alkama et al.

[Title Page](#)

[Abstract](#) | [Introduction](#)

[Conclusions](#) | [References](#)

[Tables](#) | [Figures](#)

[⏪](#) | [⏩](#)

[◀](#) | [▶](#)

[Back](#) | [Close](#)

[Full Screen / Esc](#)

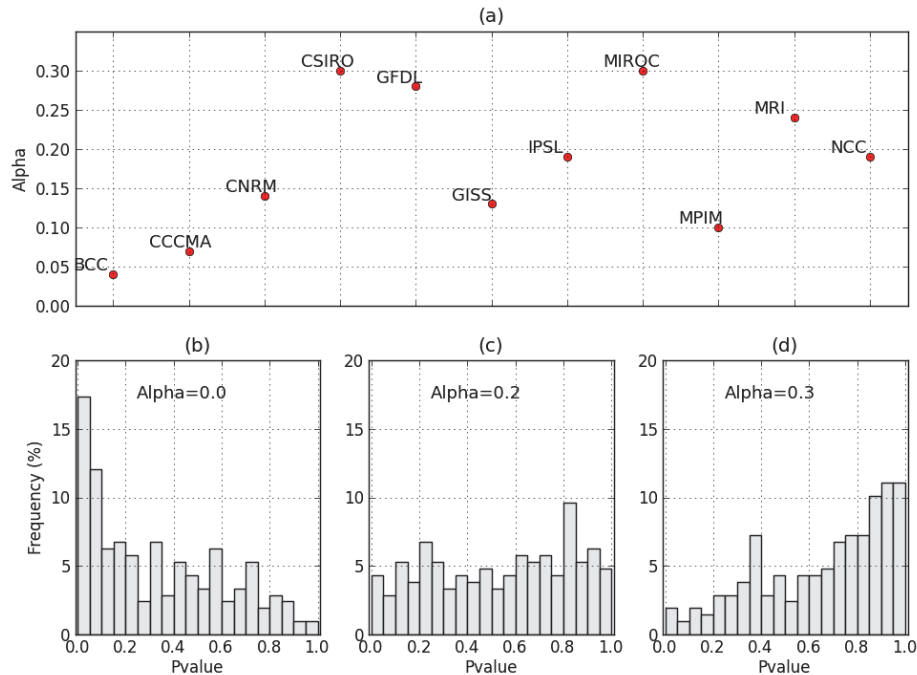
[Printer-friendly Version](#)

[Interactive Discussion](#)



## Global runoff changes: results from CMIP5 and observations

R. Alkama et al.



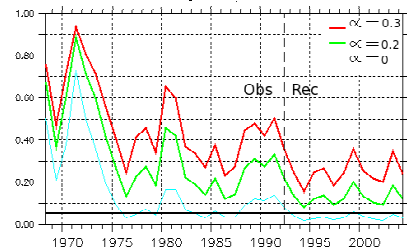
**Fig. 2.** (a) Estimated alpha ( $\alpha$ ) based on the global runoff time-series from each CMIP5 model (piControl simulations); (b), (c) and (d) are the distribution of the P-value when TOD test is applied to different segments of 50 yr periods of all CMIP5 control runs using  $\alpha = 0, 0.2$  and  $0.3$ , respectively.

[Title Page](#)
[Abstract](#)
[Introduction](#)
[Conclusions](#)
[References](#)
[Tables](#)
[Figures](#)
[⏪](#)
[⏩](#)
[◀](#)
[▶](#)
[Back](#)
[Close](#)
[Full Screen / Esc](#)
[Printer-friendly Version](#)
[Interactive Discussion](#)

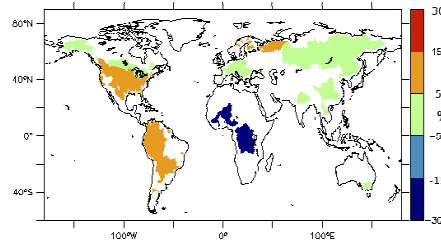
## Global runoff changes: results from CMIP5 and observations

R. Alkama et al.

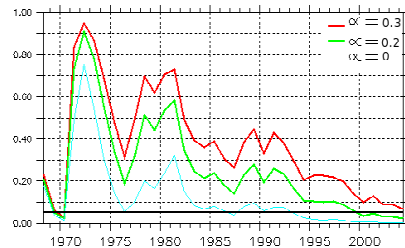
(a) P-value over 168 river basins



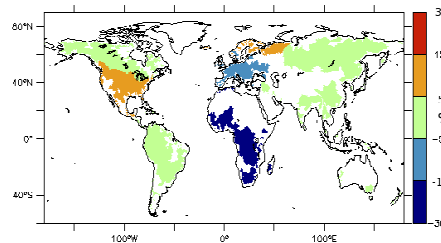
Trend ( $\Delta Q/Q$ )



(b) P-value reconstructed runoff over 686 river basins



Trend ( $\Delta Q/Q$ )



**Fig. 3.** (a) (right panel) Temporal evolution of observed (1968–1992) and reconstructed (1992–2004) runoff P-value over 161 river basins merged over 8 zones. The full horizontal black line represent the threshold level at 5%. Left panel: distribution of the runoff relative anomalies ( $\Delta Q/Q$ ) in percentage over 161 river basins. (b) same as (a) but using reconstructed data over 687 river basins rather than observations over the whole 1968–2004 period.

Title Page

Abstract

Introduction

Conclusions

References

Tables

Figures

⏪

⏩

◀

▶

Back

Close

Full Screen / Esc

Printer-friendly Version

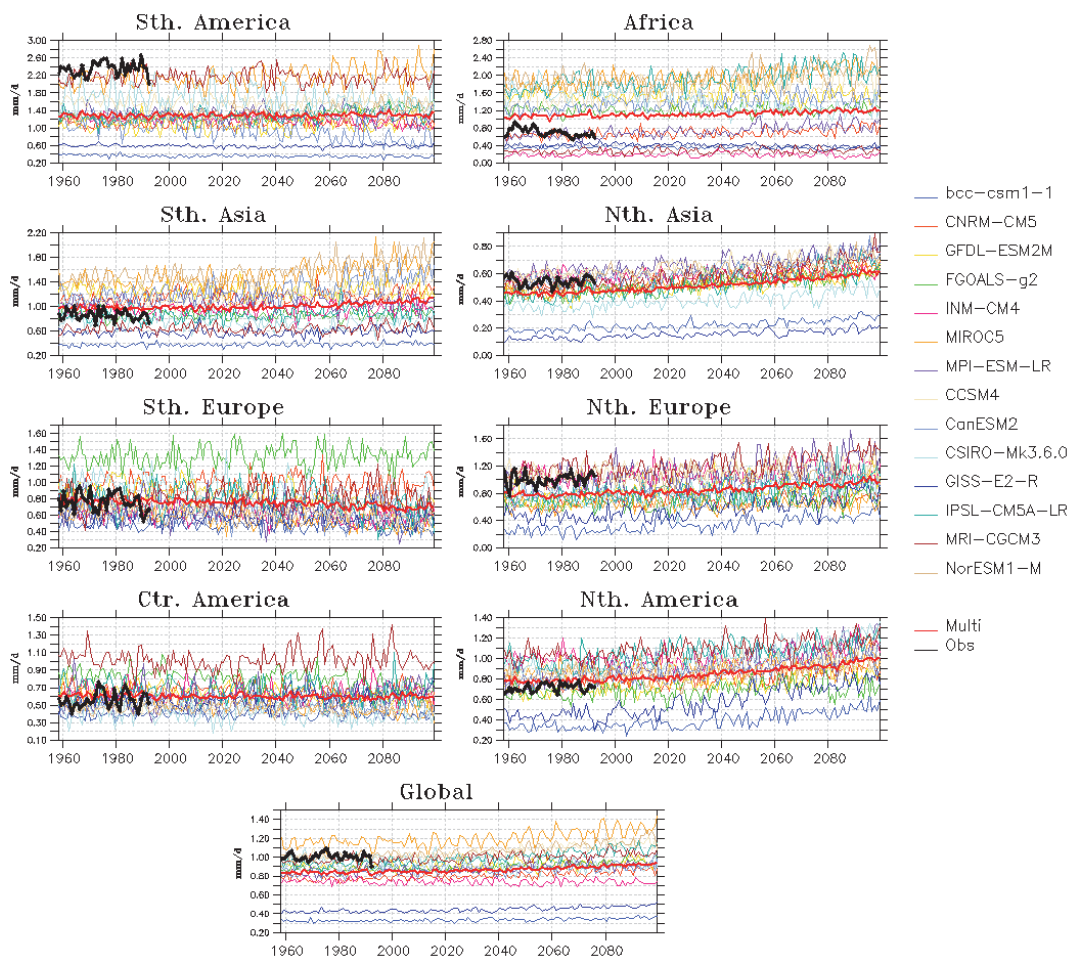
Interactive Discussion

# HESSD

10, 2117–2140, 2013

## Global runoff changes: results from CMIP5 and observations

R. Alkama et al.



**Fig. 4.** 1958 to 2100 global and regional time-series of the simulated (colors) and observed (black) annual runoff. The median of the fourteen models is given by the thick red line.

[Title Page](#)

[Abstract](#) | [Introduction](#)

[Conclusions](#) | [References](#)

[Tables](#) | [Figures](#)

[⏪](#) | [⏩](#)

[⏴](#) | [⏵](#)

[Back](#) | [Close](#)

[Full Screen / Esc](#)

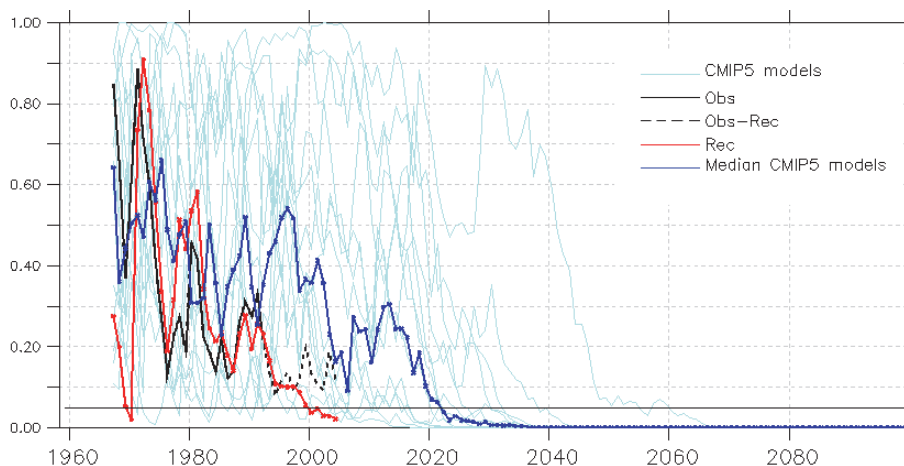
[Printer-friendly Version](#)

[Interactive Discussion](#)



**Global runoff changes: results from CMIP5 and observations**

R. Alkama et al.



**Fig. 5.** Temporal P-value of observed (black), reconstructed (red) and simulated (light blue) global runoff over 161 river basins using  $\alpha$  at 0.2. The median of the 14 CMIP5 models is in blue.

[Title Page](#)[Abstract](#)[Introduction](#)[Conclusions](#)[References](#)[Tables](#)[Figures](#)[⏪](#)[⏩](#)[◀](#)[▶](#)[Back](#)[Close](#)[Full Screen / Esc](#)[Printer-friendly Version](#)[Interactive Discussion](#)