

This discussion paper is/has been under review for the journal Hydrology and Earth System Sciences (HESS). Please refer to the corresponding final paper in HESS if available.

The role of retrospective weather forecasts in developing daily forecasts of nutrient loadings over the Southeast US

J. Oh¹, T. Sinha², and A. Sankarasubramanian²

¹Department of Geological Sciences University of North Carolina, Chapel Hill, NC 27599-3315, USA

²Department of Civil, Construction and Environmental Engineering North Carolina State University, Raleigh, NC 27695-5908, USA

Received: 22 October 2013 – Accepted: 11 December 2013 – Published: 20 December 2013

Correspondence to: T. Sinha (tsinha@ncsu.edu)

Published by Copernicus Publications on behalf of the European Geosciences Union.

[Title Page](#)

[Abstract](#)

[Introduction](#)

[Conclusions](#)

[References](#)

[Tables](#)

[Figures](#)

[⏪](#)

[⏩](#)

[◀](#)

[▶](#)

[Back](#)

[Close](#)

[Full Screen / Esc](#)

[Printer-friendly Version](#)

[Interactive Discussion](#)

Abstract

It is well-known in the hydrometeorology literature that developing real-time daily streamflow forecasts in a given season significantly depend on the skill of daily precipitation forecasts over the watershed. Similarly, it is widely known that streamflow is the most important predictor in estimating nutrient loadings and the associated concentration. The intent of this study is to bridge these two findings so that daily nutrient loadings and the associated concentration could be predicted using daily precipitation forecasts and previously observed streamflow as surrogates of antecedent land surface conditions. By selecting 18 relatively undeveloped basins in the Southeast US (SEUS), we evaluate the skill in predicting observed total nitrogen (TN) loadings in the Water Quality Network (WQN) by first developing the daily streamflow forecasts using the retrospective weather forecasts based on K -nearest neighbor (K -NN) resampling approach and then forcing the forecasted streamflow with a nutrient load estimation (LOADEST) model to obtain daily TN forecasts. Skill in developing forecasts of streamflow, TN loadings and the associated concentration were computed using rank correlation and RMSE, by comparing the respective forecast values with the WQN observations for the selected 18 Hydro-Climatic Data Network (HCDN) stations. The forecasted daily streamflow and TN loadings and their concentration have statistically significant skill in predicting the respective daily observations in the WQN database at all the 18 stations over the SEUS. Only two stations showed statistically insignificant relationship in predicting the observed nitrogen concentration. We also found that the skill in predicting the observed TN loadings increase with increase in drainage area which indicates that the large-scale precipitation reforecasts correlate better with precipitation and streamflow over large watersheds. To overcome the limited samplings of TN in the WQN data, we extended the analyses by developing retrospective daily streamflow forecasts over the period 1979–2012 using reforecasts based on the K -NN resampling approach. Based on the coefficient of determination ($R_{Q\text{-daily}}^2$) of the daily streamflow forecasts, we computed the potential skill ($R_{TN\text{-daily}}^2$) in developing daily nu-

Role of weather forecasts in forecasting nutrient loadings

J. Oh et al.

Title Page

Abstract

Introduction

Conclusions

References

Tables

Figures

⏪

⏩

◀

▶

Back

Close

Full Screen / Esc

Printer-friendly Version

Interactive Discussion



trient forecasts based on the R^2 of the LOADEST model for each station. The analyses showed that the forecasting skills of TN loadings are relatively better in winter and spring months while skills are inferior during summer months. Despite these limitations, there is potential in utilizing the daily streamflow forecasts derived from real-time weather forecasts for developing daily nutrient forecasts, which could be employed for various adaptive nutrient management strategies for ensuring better water quality.

1 Introduction

Anthropogenic interventions of biogeochemical cycles have resulted in increased nutrient loadings in streams over the past few decades (Galloway et al., 1995; Caraco and Cole, 1999). Continuous concerns about water quality degradation have resulted in the development of active water quality management programs such as total maximum daily load allocation (TMDL) as well as establishment of policy instruments related to water quality trading. Of particularly interest is the total nitrogen (TN) loadings whose contribution from the land surface to the North Atlantic Ocean, has increased from 5 to 20 folds in comparison to the pre-industrial/natural level (Howarth et al., 1996). Nitrate levels have tripled in major rivers over the northeastern US since 1900's while nitrate concentration doubled in the Mississippi River basin since 1965 (Turner and Rabalais, 1991; Howarth et al., 1996; Vitousek et al., 1997; Goolsby and Battaglin, 2001).

Excess nitrogen results in overproduction of phytoplanktons, which in turn causes anoxic conditions and eutrophication in lakes and coastal regions (Vitousek et al., 1997; Pinckney et al., 1999). Such eutrophication, due to natural and anthropogenic nitrogen sources, is an important water quality degradation issue, which ranges from small streams (Duff et al., 2008) to large water bodies such as Gulf of Mexico (e.g. Bricker et al., 1999; Alexander et al., 2000; Rabalais et al., 2002; Alexander and Smith, 2006). There have been several efforts to reduce nitrogen loadings to streams but such programs are often too costly. For example, North Carolina Department of Energy and Natural Resources (DENR) have spent several billion dollars in nutrient management

Role of weather forecasts in forecasting nutrient loadings

J. Oh et al.

Title Page

Abstract

Introduction

Conclusions

References

Tables

Figures

⏪

⏩

◀

▶

Back

Close

Full Screen / Esc

Printer-friendly Version

Interactive Discussion



of Falls Lake in the Neuse River to control total nitrogen loadings under permissible range (North Carolina DENR). But, availability of data on total nitrogen is limited with concentration is typically measured on a non-continuous basis. Studies have tried to overcome these limitations by using the long available records of streamflow, since both instream nutrient concentration and loadings primarily depend on streamflow variability (Borsuk et al., 2004; Paerl et al., 2006; Lin et al., 2007) and antecedent flow conditions (Vecchia, 2003; Alexander and Smith, 2006). Various nutrient simulation models have been developed to estimate loadings using semi-distributed hydrologic models (e.g., WASP, HSPF, SWAT, GWLF) or statistical models (e.g., LOADEST). Both these types of models are typically implemented under a simulation mode by using observed meteorological forcings to estimate nitrogen loadings. Similarly, considerable progress has been made in developing daily streamflow forecasts using both statistical models that consider both parametric (Rajagopalan and Lall, 1999; Anderson et al., 2002; Salas and Lee, 2010) and semi-distributed models (e.g., Clark and Hay, 2004; Mcenery et al., 2005; Georgakakos et al., 2010). Developing daily streamflow forecasts over a large region using semi-distributed models require intensive spatial data (e.g. topography, land cover, soils) and computational resources, hence, we employed the K -Nearest Neighbor (K -NN) semi-parametric approach to develop daily streamflow forecasts contingent on updated climate forecasts. Furthermore, K -NN approach can also capture nonlinear relationships that are typically observed in daily streamflow data (Salas and Lee, 2010) and it has been widely used in hydrologic studies (Rajagopalan and Lall, 1999; Prairie et al., 2006; Sharif and Burn, 2006). Although daily streamflow forecasts could be developed with reasonable skill, there is a gap in linking those forecasts to develop daily nutrient loading forecasts. Given that skillful forecasts of daily nutrient loadings could be utilized in improving in-stream water quality, we intend to investigate the potential in forecasting daily nutrient loadings conditional on daily precipitation forecasts and previously observed streamflow as surrogates of antecedent moisture conditions for 18 watersheds that are minimally affected by anthropogenic interventions over the Southeast US.

Role of weather forecasts in forecasting nutrient loadings

J. Oh et al.

[Title Page](#)[Abstract](#)[Introduction](#)[Conclusions](#)[References](#)[Tables](#)[Figures](#)[Back](#)[Close](#)[Full Screen / Esc](#)[Printer-friendly Version](#)[Interactive Discussion](#)

Role of weather forecasts in forecasting nutrient loadings

J. Oh et al.

[Title Page](#)

[Abstract](#)

[Introduction](#)

[Conclusions](#)

[References](#)

[Tables](#)

[Figures](#)

[⏪](#)

[⏩](#)

[◀](#)

[▶](#)

[Back](#)

[Close](#)

[Full Screen / Esc](#)

[Printer-friendly Version](#)

[Interactive Discussion](#)



The manuscript is organized as follows: Sect. 2 details the data sources for daily streamflow, observed daily total nitrogen samplings and retrospective daily precipitation forecasts that were utilized in the study. Following that, we describe the methodology behind the development of daily streamflow and nutrient loadings forecasts. Section 4 provides the results on the skill in predicting the observed nutrient loadings over the selected 18 watersheds. Finally, in Sect. 5, we summarize the salient findings and conclusions arising from the study.

2 Data description

This section outlines the streamflow, Water Quality Network (WQN), retrospective weather forecasts associated with the development of total nitrogen forecasts over the Southeast US.

2.1 HCDN streamflow database

Given the intent of the study is to associate daily nutrient loadings with daily precipitation forecasts, we focus our analysis on 18 undeveloped basins over the Southeast United States (SEUS) from the Hydro-Climatic Data Network (HCDN) database (Slack et al., 1993). Figure 1 shows the location of 18 HCDN stations and Table 1 provides the list of the 18 stations considered in this study along with their drainage areas. Daily streamflow records in the HCDN basins is purported to be relatively free of anthropogenic influences such as upstream storage and groundwater pumping and the accuracy ratings of these records are at least “good” according to United States Geological Survey (USGS) standards. Since the streamflow data (Q) in the HCDN database is available only up to 1988, we extended records up to 2009 based on the USGS historical daily streamflow database.

2.2 Weather forecasts database

We employed retrospective weather forecasts from the National Oceanic and Atmospheric Administration (NOAA) to forecast daily streamflow at multiple sites in the SEUS (Hamill et al., 2004, 2006). NOAA's Earth System Research Laboratory/Physical Science Division (ESRL/PSD) reforecast project provides daily precipitation forecasts from the Global Forecast System (GFS) model, which was formerly called the Medium-Range Forecast Model (MRF). Daily precipitation reforecasts from the GFS model consists of 15 ensemble members, up to 15 days in advance, starting from 1979 to till date. In this study, we considered the ensemble mean of daily precipitation forecasts to forecast daily streamflow and daily total nitrogen loadings for the selected watersheds.

2.3 Water Quality monitoring Network (WQN) database

USGS provides national and regional descriptions of stream water quality conditions in Water Quality monitoring Network (WQN) across the nation (Alexander et al., 1998). The WQN database comprises of water quality data from USGS monitoring networks from both large watersheds (National Stream Quality Accounting Network, NASQAN) and minimally developed watersheds (Hydrologic Benchmark Network, HBN). We used the observed daily concentrations of Total Nitrogen (TN) for the 18 stations in the SEUS from the WQN database. By selecting watersheds from the HCDN database, we basically ensure that both the streamflow and water quality data are minimally affected by anthropogenic influences. Despite the long observational period of nitrogen loadings (12–23 yr), total nitrogen concentration was measured 5 to 6 times per year (Table 1). For additional details about the WQN database, see Alexander et al. (1998). We next provide details on the methodologies behind the development of streamflow and total nitrogen loadings forecasts for the selected watersheds.

HESSD

10, 15625–15657, 2013

Role of weather forecasts in forecasting nutrient loadings

J. Oh et al.

Title Page

Abstract

Introduction

Conclusions

References

Tables

Figures

⏪

⏩

◀

▶

Back

Close

Full Screen / Esc

Printer-friendly Version

Interactive Discussion

3 Streamflow and Total Nitrogen Forecasting Models

The overall schematic diagram of the daily streamflow and nutrients forecasting methodology is shown in Fig. 2.

3.1 Daily Streamflow Forecasts

To develop daily streamflow forecasts, we first identified the grid points of large scale 1 day ahead forecasted precipitation (referred as FP, hereafter) that exhibit significant correlation with daily streamflow from the HCDN database (Table 2). The correlation was considered statistically significant when it was greater than $1.96/\sqrt{(n-3)}$, where “ n ” denotes the number of days over 1979 to 2009 period. This helps us to identify the neighboring grid points that modulate the streamflow of a particular watershed.

Given that the selected large scale FP grids are inter-correlated with each other, Principal Component Analysis (PCA) was applied to select first few principal components which explained over 90% variability in the precipitation data. PCA, also known as empirical orthogonal function (EOF) analysis, transforms the correlated variables to orthogonal uncorrelated principal components (See details in Oh and Sankarasubramanian, 2013). The number of principal components varies from 2 to 5 among different sites (Table 2). These principal components (PCs) of 1 day ahead FP as well as daily streamflow over the previous three days, prior to the forecasting date, were selected as the predictor for the semi-parametric statistical model. For example, to forecast streamflow on a particular day WQN data was observed, say 14 March in a given year, predictors were the 1 day ahead FP issued on 13 March and the 1 day average daily streamflow from 11 March to 13 March in that year. Thus, the number of predictors varies from 3 to 6 (i.e., the number of selected PCs shown in Table 2 and one predictor for the 1 day average streamflow). The streamflow over the previous three days could be considered as a surrogate for antecedent soil moisture conditions. Then, the nearest neighbor resampling method was employed to predict daily streamflow for that particular day in which WQN was observed.

Title Page

Abstract

Introduction

Conclusions

References

Tables

Figures

⏪

⏩

◀

▶

Back

Close

Full Screen / Esc

Printer-friendly Version

Interactive Discussion



3.2 *K*-Nearest Neighbor (*K*-NN) resampling approach

After obtaining the predictors, PCs of the FP grids and 1 day average streamflow, we utilized the *K*-Nearest Neighbor (*K*-NN) resampling method proposed by Lall and Sharma (1996). Similar application of *K*-NN resampling approach was employed for developing monthly streamflow forecasts conditional on climatic predictors (Souza et al., 2003; Devineni et al., 2008). The *K*-NN approach resamples daily (or monthly data) from historical data to generate values that were observed in the past. Typically, the *K* nearest neighbors are identified between predicted time series and the historical series based on the Euclidean distance. Then a weighing function (e.g. Lall and Sharma, 1996) is generally assigned such that more weights are given to the nearest neighbors while less weights are given the farthest neighbors to estimate the predicted time series. Finally, multiple ensembles are generated to estimate the conditional mean of the time series.

In this study, we used the Mahalanobis distance, since the selected predictors – PCs of the principal components and the streamflow over the past observations- could be correlated. Therefore, for forecasting the streamflow for a given day observed in the WQN data, all the neighbors were chosen based on the historical time series of 1 day ahead FP and previous 1 day average streamflow for that day over the period 1979 to 2009, leaving out the daily predictors and predictands over the entire forecasting year (i.e., 365 days). This implies that in order to forecast streamflow for a given day, 30 historical years are available (excluding the forecast year) for identifying similar conditions. Since this is a small sample size for identifying neighbors, we also considered daily streamflow over the three previous days, resulting in a total 120 neighbors, to develop streamflow forecasts for a given day. Mahalanobis distance for all these 120 neighbors were estimated using Eq. (1) (Mahalanobis, 1936):

$$D_{i,j} = \sqrt{(X_i - X_j)^T S^{-1} (X_i - X_j)} \quad (1)$$

Role of weather forecasts in forecasting nutrient loadings

J. Oh et al.

Title Page

Abstract

Introduction

Conclusions

References

Tables

Figures

⏪

⏩

◀

▶

Back

Close

Full Screen / Esc

Printer-friendly Version

Interactive Discussion

where \mathbf{X}_i and $\mathbf{X}_j = (X_1, X_2, \dots, X_{120})$ are the multivariate vectors containing predictor variables at the conditioning time step i and j denote the rest of the time periods that are considered for identifying the neighbors with T representing the transpose operation and \mathbf{S}^{-1} denoting the inverse of the predictor (\mathbf{X}_j) covariance matrix. The matrix, $\mathbf{X}_{\square} = [x_{1\square} \quad x_{2\square}]$ denotes the multivariate vector with $x_{1\square}$ and $x_{2\square}$ denoting the 1 day averaged streamflow before the forecasted day and the PCs of 1 day ahead FP. The first 50 nearest neighbors and their corresponding daily streamflow values were selected based on Mahalanobis distance, $D_{i,j}$, to develop ensemble of daily streamflow forecasts. These daily streamflow values from the 50 neighbors were used to draw 500 ensembles that represent the conditional distribution with the density/weight represented by each member, j , by the kernel in Eq. (2):

$$w_j = \frac{1/j}{\sum_{k=1}^K 1/k}, \quad i = 1, 2, \dots, K \quad (2)$$

where $K = 50$ (the number of neighbors), w_j represents the probability with which neighbor is resampled in constituting the 500-member ensemble. Finally, the forecasted streamflow for each day is calculated as the conditional mean of these 500 realizations obtained from the 50 neighbors. The ensemble mean of daily streamflow forecasts are specifically obtained for the days on which WQN data is available, so that the ensemble mean of daily streamflow forecasts could be used for developing forecasts of total nitrogen loadings, whose details are described in the next section.

3.3 Daily nitrogen loadings and concentration forecasts development

Daily nitrogen loadings forecasts are developed by forcing the daily streamflow forecasts with the Load Estimation (LOADEST) program. LOADEST is a statistical model that estimates daily loadings based on the observed daily streamflow and the centered

time (dtime) of the year of the observation (Runkel et al., 2004).

$$\ln(L_j) = a_0 + a_1 \ln(Q_j) + a_2 \ln Q_j^2 + a_3 \sin(2\pi dtime) + a_4 \cos(2\pi dtime) + \hat{\varepsilon}_j \dots \quad (3)$$

where L_j denotes the observed daily loadings from the WQN database with “ j ” denoting the day of observation, Q_j is the observed daily flow and dtime is the centered time which is a function of the observation’s number of days (from 1 January) in the calendar year, a_0 – a_4 denote the model coefficients and $\hat{\varepsilon}_j$ is the estimated residual for the model. The expression dtime is centered to avoid multi-collinearity and dtime also represents the seasonality in loadings pattern. For a detailed expression on dtime, see Cohn et al. (1992).

The LOADEST model allows the user to select the best-fitting regression model from eleven predefined regression models using the Akaike Information Criterion (AIC) (Akaike, 1981). Five regression models that include a linear time trend are not appropriate, since we are employing observed streamflow to estimate simulated loadings for HCDN watersheds. Therefore, the simulated nutrient loadings based on the remaining regression models (i.e., model forms: 1, 2, 4 and 6 as defined in Runkel et al., 2004) in the LOADEST program do not have any time trend. Equation (3) represents the model form 6. Model form 1 (2) considers only the first two (three) terms in the right hand side (RHS) of Eq. (3), whereas model form 3 considers all the terms except the third term in the RHS of Eq. (3). For further details on model forms, see Runkel et al. (2004). Table 3 shows the “goodness of fit” statistics (coefficient of determination (R^2) and AIC) in predicting the observed daily loadings in the WQN database (Table 1) and the coefficients of the best fitting regression model for total nitrogen for the selected 18 stations.

From Table 3, we infer that R^2 ranges from 0.83–0.97 indicating good fit of the observed daily loadings over 18 stations. Using these parameters, we next estimate the forecasts of daily loadings using the ensemble mean of daily streamflow forecasts developed using the retrospective weather forecasts. Strictly speaking, these parameters should have been obtained by leaving out the observed WQN loadings on the day of the forecasting. Since we have more than 50 observations at each site (Table 1),

Role of weather forecasts in forecasting nutrient loadings

J. Oh et al.

Title Page

Abstract

Introduction

Conclusions

References

Tables

Figures

⏪

⏩

◀

▶

Back

Close

Full Screen / Esc

Printer-friendly Version

Interactive Discussion



the regression coefficients and model forms did not change substantially. Hence, we used the parameters of the regression coefficients given in Table 3 to estimate the forecasted total nitrogen loadings. These forecasted loadings are divided by the forecasted streamflow to estimate the forecasts of total nitrogen concentrations for the 18 selected watersheds. The forecasted daily streamflow and total nitrogen loadings and concentration are respectively compared with the observed streamflow and the observed WQN daily loadings based on Spearman rank correlation and Root Mean Square Error (RMSE) in predicting the observed information.

4 Results and analysis

In this section, we present skill in predicting variability (rank correlation) and accuracy (RMSE) of observed streamflow and WQN loadings using the forecasted daily streamflow obtained using the K -NN approach.

4.1 Skill in forecasting daily streamflow

We first summarize the performance of the daily streamflow forecasts for only those days when TN loadings are measured (Fig. 4a). Based on that, we infer that all the stations show statistically significant correlations with 8 sites showing correlations greater than 0.8 (Fig. 3a). Similarly, RMSE (in cfs per unit area) is lesser than 1 for all states except stations #11, 17 and 18 (Fig. 3b). These errors primarily occur due to the inability of the model to predict high values, which resulted in very high residuals. For instance, RMSE for station #17 drops from 3.56 to 0.55 by excluding only one extreme observation recorded on 2/10/1981 (not shown here). The RMSE for station #11 (#18) are adjusted to 0.73 (0.29) by dropping one (two) high flow value(s). Although this conditional bias is not observed at all the stations, we infer that the daily streamflow forecast model has poor skill in predicting high flow values. We defer this issue for further discussion at the end of this section. Given this evaluation in predicting observed

Role of weather forecasts in forecasting nutrient loadings

J. Oh et al.

[Title Page](#)

[Abstract](#)

[Introduction](#)

[Conclusions](#)

[References](#)

[Tables](#)

[Figures](#)

[⏪](#)

[⏩](#)

[◀](#)

[▶](#)

[Back](#)

[Close](#)

[Full Screen / Esc](#)

[Printer-friendly Version](#)

[Interactive Discussion](#)



streamflow on days with WQN data, we next evaluate the performance of daily nitrogen loadings and concentration forecasts for the 18 stations.

4.2 Skill in forecasting total nitrogen loadings and concentration

Using the ensemble mean of the daily forecasted streamflows as a predictor in the LOADEST model, we estimate the forecasted TN loadings for those days in which measurements are available in the WQN database. Figure 4a (and b) shows rank correlation (RMSE) between forecasted daily loadings and observed loadings for the 18 stations. Daily loadings of TN forecasts exhibit statistically significant relationship between observation and forecasts at all the stations with correlation coefficients being greater than 0.8 in nine stations. We also infer the correlation is higher in coastal regions as opposed to the inland watersheds. Similar to the skill of daily streamflow forecasts, loadings forecasts produce high RMSE in some stations despite their ability to predict the observed variability. This failure in forecasting TN loadings is primarily due to the inability in estimating high flow events as discussed in Sect. 4.1.

Further extending our analysis, we estimated TN concentration from the LOADEST model utilizing the forecasted streamflow and loadings and then compared the forecasted TN concentration with the observed concentrations available in the WQN database (Fig. 5). Though the forecasted concentration is smaller compared to correlation reported for streamflow and loadings, the correlation is statistically significant at all stations except stations #6 and #18. Given that concentration is the ratio of loadings to the streamflow, the error in predicting both loadings and streamflow result in reduced skill. We are not reporting the RMSE since the trend is similar to Figs. 4 and 5.

4.3 Factors affecting the skill in forecasting TN loadings

In order to understand what factors control the skill in forecasting the TN loadings utilizing the weather forecasts, we plotted the rank correlation against basin area (Fig. 6). Rank correlation in forecasting streamflow (Fig. 6a) and TN loadings (Fig. 6b) are

Role of weather forecasts in forecasting nutrient loadings

J. Oh et al.

[Title Page](#)

[Abstract](#)

[Introduction](#)

[Conclusions](#)

[References](#)

[Tables](#)

[Figures](#)

[⏪](#)

[⏩](#)

[◀](#)

[▶](#)

[Back](#)

[Close](#)

[Full Screen / Esc](#)

[Printer-friendly Version](#)

[Interactive Discussion](#)



statistically significant for all the stations and the skill increases as the drainage area increases. This is primarily due to the fact that retrospective weather forecasts being available over large spatial scales, the developed streamflow and TN loadings forecasts modulate better with the observed streamflow and WQN loadings.

To gain further understanding on how the developed model estimate the observed streamflow and nutrients, we present the performance of daily streamflow and TN forecasts for the sites that have the best and worst skill under each case (Fig. 7). For quantifying the performance of streamflow, we considered the continuous daily streamflow records available from USGS instead of comparing the performance on the days with WQN data. From streamflow forecasts for the site with best skill (Fig. 7a), we understand that overall performance is good, but the K -NN resampling approach based daily streamflow forecasts consistently underestimate high flow events. This underestimation/error in streamflow forecasts partially arises from the errors in the precipitation forecasts also. We discuss this issue in detail in the next section. From Fig. 7b, the site performs poorly in forecasting flows above 8000 cfs. It is important to note that for the same site we observed significant correlation in predicting both the streamflow and the loadings on those days with WQN data being present. Thus, evaluating the performance of K -NN resampling model over the entire time series of observed records provide a more confirmatory evaluation of the model. The primary reason the K -NN resampling model performs poorly at site 3 (Rocky River near Norwood, NC) is due to the limited correlation between the observed precipitation and the forecasted precipitation during the summer months (figure not shown). Thus, the error resulting from K -NN resampling arises from both errors in the precipitation forecasts and in estimating the initial conditions as well as from the model itself. Even if one uses physically-based distributed models (e.g., Sacramento model), the skill of streamflow forecasts is heavily dependent on the skill of precipitation forecasts as well as the season of forecasting.

Figure 7c shows the performance of the TN loadings forecasts obtained using the streamflow forecasts with the LOADEST model. Even here, the same issue is highlighted with the limited ability of the forecasts in predicting the nutrients on days with

HESSD

10, 15625–15657, 2013

Role of weather forecasts in forecasting nutrient loadings

J. Oh et al.

[Title Page](#)

[Abstract](#)

[Introduction](#)

[Conclusions](#)

[References](#)

[Tables](#)

[Figures](#)

[⏪](#)

[⏩](#)

[◀](#)

[▶](#)

[Back](#)

[Close](#)

[Full Screen / Esc](#)

[Printer-friendly Version](#)

[Interactive Discussion](#)



high flows resulting in underestimated TN loadings. But, the model estimates the variability of the observed nutrients very well. Figure 7d shows the performance of TN loadings for a station with the worst skill. The skill of the streamflow forecasts resulting from the *K*-NN resampling approach in predicting the observed daily streamflow recorded at USGS stations is marginal with an average daily correlation of 0.6. Given that the R^2 of the LOADEST model is 0.912 for the selected station (Table 3), the poor performance primarily results from the inability of the streamflow forecasts which partly arises from the resampling model as well as from the skill of the precipitation forecasts. Thus, to develop nutrient forecasts, it is important that the skill of daily precipitation and streamflow forecasts should be good and also the load estimation model should have very high skill in predicting the observed nutrients. Given that these basins are virgin, it could be argued the predominant source of nutrient loadings arise from the nonpoint sources whose primary transport is the streamflow. Thus, for developing a broader understanding of what could be achieved in forecasting daily nutrients in virgin basins, one could look at the skill in predicting daily streamflow forecasts using the retrospective weather forecasts for the selected 18 stations. We summarize this information under the discussion in the next section by summarizing the skill of daily streamflow forecasts under each month for the selected 18 stations.

4.4 Discussion

The intent of this study is to develop daily forecasts of total nitrogen (TN) loadings and its concentration in 18 HCDN watersheds that are minimally impacted by anthropogenic influences over the southeastern US. Given that these watersheds experience virgin flow, our hypothesis is that most of the nutrient transport at daily time scales could be explained based on observed streamflow. For this purpose, we related the observed daily streamflow and loadings using the LOADEST model (Table 3), which showed significant skill in predicting the daily variability in TN loadings purely based on observed streamflow. Given that the predominant driver of streamflow in watersheds under rainfall-runoff regime is precipitation, we utilized the retrospective 1 day ahead

Role of weather forecasts in forecasting nutrient loadings

J. Oh et al.

[Title Page](#)

[Abstract](#)

[Introduction](#)

[Conclusions](#)

[References](#)

[Tables](#)

[Figures](#)



[Back](#)

[Close](#)

[Full Screen / Esc](#)

[Printer-friendly Version](#)

[Interactive Discussion](#)



Role of weather forecasts in forecasting nutrient loadings

J. Oh et al.

[Title Page](#)

[Abstract](#)

[Introduction](#)

[Conclusions](#)

[References](#)

[Tables](#)

[Figures](#)

[⏪](#)

[⏩](#)

[◀](#)

[▶](#)

[Back](#)

[Close](#)

[Full Screen / Esc](#)

[Printer-friendly Version](#)

[Interactive Discussion](#)

precipitation forecasts from the reforecasts database of Hamill et al. (2004) and daily streamflow over previous three days (as a surrogate for soil moisture storage) for developing daily streamflow forecasts on the days with recorded WQN observations. The forecasted ensemble average of the streamflow obtained using the K -NN resampling model was used within the LOADEST model to estimate the forecasted daily TN loadings and the concentrations. We observed the correlation between observed TN loadings and the forecasted TN loadings being significant in almost all the stations. But, the forecasted concentration showed reduced skill, since it accounted for the errors in both loadings and streamflow. Though one could improve the streamflow forecasts developed using the K -NN resampling approach by considering physically distributed hydrologic models and by explicitly considering additional input variables (e.g., temperature forecasts, humidity), we certainly captured the first-order information on the daily streamflow variability by utilizing the retrospective precipitation forecasts and employed that for assessing the potential in developing nutrient forecasts. Another advantage with the streamflow forecasts using K -NN approach is in specifying the conditional distribution of flows. Thus, one could use the conditional distribution of streamflows with the LOADEST model to develop the conditional distribution of loadings, which could be used to estimate the probability of violating the concentration at the daily time scale.

It is important to note that all the skill reported in Figs. 3–6 consider the ability to predicting exactly for those days with WQN observations. The primary difficulty in assessing the potential for developing nutrient forecasts at daily time scale is the discontinuous nutrient samplings recorded in the WQN database. Oh and Sankarasubramanian (2012) addressed this issue by computing the coefficient of determination (R^2) of the winter TN loadings forecasts as a product of the R^2 in forecasting the seasonal streamflow and the R^2 of the LOADEST model for the winter season. Similarly, we express the skill of TN forecasts (Eq. 4) at daily time scale as a product of the R^2 of streamflow (Q) forecasts developed from the K -NN approach for each day in the calendar year

and the R^2 of the LOADEST model reported in Table 3.

$$R_{\text{TN-daily}}^2 = R_{(\text{LOADEST})}^2 \cdot R_{\text{Q-daily}}^2 \dots \quad (4)$$

$R_{\text{Q-daily}}^2$ is computed between the observed daily streamflow over the period 1979–2010 and the computed ensemble mean of the streamflow forecast from the K -NN resampling approach. Since the skill of daily streamflow forecasts differ substantially depending on the season, we plot the $R_{\text{TN-daily}}^2$ as a box-plot for each month (Fig. 8). Basically, Fig. 8 pools the daily correlation, $R_{\text{TN-daily}}^2$, for a given month across the 18 stations. For instance, in January, we expect 31*18 daily correlations and the box-plot simply summarizes the skill in predicting daily TN for that month over the Southeast US. About 75% of the $R_{\text{TN-daily}}^2$ at daily level are statistically significant level over the period January to May and also from November and December (Fig. 8). Daily TN forecasts show relatively better skills in predicting observed TN variability during winter and spring. On the other hand, the skill of $R_{\text{TN-daily}}^2$ is poor during the summer and fall seasons. It has been well-known that retrospective precipitation forecasts have lower skill during the warm-season (Hamill et al., 2004). One of the possible reasons of relatively poor skill during summer and fall is that weather phenomena during these seasons depend greatly on local scale processes while large-scale models do not have the ability to capture it (Hamill et al., 2006). Thus, the poor skill of $R_{\text{TN-daily}}^2$ primarily arises from the skill in forecasting precipitation during the summer and fall seasons. Additionally, the role of temperature during the summer season is also much higher with enhanced evapotranspiration. However, considering temperature as additional predictor did not result in substantial increase in the $R_{\text{Q-daily}}^2$ for the summer season. Perhaps, if one considers a physically-based hydrologic model, the skill in predicting daily streamflow could improve during the summer season. We plan to investigate this as a future work in assessing the potential for developing nutrient forecasts with streamflow forecasts being derived from a physically-based distributed hydrologic model. Thus, the potential skill ($R_{\text{TN-daily}}^2$) in predicting daily nutrients is statistically significant for the winter

Role of weather forecasts in forecasting nutrient loadings

J. Oh et al.

Title Page

Abstract

Introduction

Conclusions

References

Tables

Figures

⏪

⏩

◀

▶

Back

Close

Full Screen / Esc

Printer-friendly Version

Interactive Discussion



and spring season in almost all the stations. One could utilize this to develop adaptive nutrient management strategies for controlling the point sources (e.g., waste water treatment plants) so that the downstream TN concentration does not exceed the desired/EPA standard.

5 Summary and conclusions

We developed a semi-parametric statistical model, which utilizes 1 day ahead precipitation forecasts from the reforecasts from the NOAA GFS climate model (Hamill et al., 2004) and daily streamflow over the previous three days as predictors, to develop daily streamflow forecasts, which in turn was used to implement a load estimation model, LOADEST, for estimating daily nutrients. For each day, conditioned on previous day's streamflow and 1 day ahead forecasted precipitation, 50 nearest neighbors over a three-day window were selected based on the Mahalanobis distance and then observed daily streamflow corresponding to those 50 neighbors were resampled to constitute 500 ensemble members to develop a daily streamflow forecast. It is important to note that to develop a forecast for a given day in a year, the entire year's predictors and predictand were left out for identifying the 50 nearest neighbors. Finally, the conditional mean of these daily streamflow ensemble was forced in the LOADEST model to obtain daily forecasts of TN loadings and concentration for days with recorded WQN observations. Skill in developing forecasts of streamflow, TN loadings and the associated concentration were computed using rank correlation and RMSE, by comparing the respective forecast values with the WQN observations for the selected 18 HCDN stations. The forecasted daily streamflow and TN loadings and their concentration exhibit statistically significant skill in predicting the respective daily observations in the WQN database at all the 18 stations over the SEUS. The study also found that the skill in predicting the observed TN loadings is higher for large watersheds indicating the large-scale precipitation forecasts from the reforecast database better correlate with precipitation and streamflow over large watersheds. To overcome the limited

Role of weather forecasts in forecasting nutrient loadings

J. Oh et al.

Title Page

Abstract

Introduction

Conclusions

References

Tables

Figures

⏪

⏩

◀

▶

Back

Close

Full Screen / Esc

Printer-friendly Version

Interactive Discussion



Role of weather forecasts in forecasting nutrient loadings

J. Oh et al.

[Title Page](#)

[Abstract](#)

[Introduction](#)

[Conclusions](#)

[References](#)

[Tables](#)

[Figures](#)

[⏪](#)

[⏩](#)

[◀](#)

[▶](#)

[Back](#)

[Close](#)

[Full Screen / Esc](#)

[Printer-friendly Version](#)

[Interactive Discussion](#)

samplings of TN in the WQN data, we extended the analyses by developing retrospective daily streamflow forecasts over the period 1979–2012 using reforecasts based on the K -NN resampling approach. Based on the coefficient of determination ($R^2_{Q\text{-daily}}$) of the daily streamflow forecasts, we computed the potential skill ($R^2_{\text{TN-daily}}$) in developing

5 daily nutrient forecasts based on the R^2 of the LOADEST model for each station. The analyses showed that the forecasting skills of TN loadings are relatively better in winter and spring months while skills are inferior during summer months. These findings are consistent with other studies (Devineni and Sankarasubramanian, 2010; Sinha and Sankarasubramanian, 2013) which show that large-scale precipitation forecasts derive

10 their skill from ENSO climatic modes in the SEUS. One possible reason for this poor skill in summer is due to the dominance of local-scale processes during the summer season. Other possible reasons could be due to the limitations in the methodology. We resampled neighbors to develop daily streamflow ensemble, which of course will not have members beyond the maximum observation over the selected 50 neighbors.

15 Further, air temperature can play a dominant role during the summer and fall seasons, resulting in enhanced evapotranspiration and reduced baseflow from the watershed. Despite these limitations, there is potential in utilizing the daily streamflow forecasts for developing daily nutrient forecasts, which could be employed for various adaptive nutrient management strategies for ensuring better water quality.

20 *Acknowledgements.* The first author's PhD dissertation research was partially supported by the US National Science Foundation CAREER grant CBET-0954405. Any opinions, findings, and conclusions or recommendations expressed in this paper are those of the authors and do not reflect the views of the NSF. Authors also wish to thank Rob Runkel of USGS for his support in setting up the LOADEST model.

References

- Akaike, H.: Likelihood of a model and information criteria, *J. Econometrics*, 16, 3–14, 1981.
- Alexander, R. B. and Smith, R. A.: Trends in the nutrient enrichment of US rivers during the late 20th century and their relation to changes in probable stream trophic conditions, *Limnol. Oceanogr.*, 51, 639–654, 2006.
- Alexander, R. B., Slack, J. R., Ludtke, A. S., Fitzgerald, K. K., and Schertz, T. L.: Data from selected US Geological Survey national stream water quality monitoring networks, *Water Resour. Res.*, 34, 2401–2405, 1998.
- Alexander, R. B., Smith, R. A., and Schwarz, G. E.: Effect of stream channel size on the delivery of nitrogen to the Gulf of Mexico, *Nature*, 403, 758–761, 2000.
- Anderson, M. L., Chen, Z. Q., Kavva, M. L., and Feldman, A.: Coupling HEC-HMS with atmospheric models for prediction of watershed runoff, *J. Hydrol. Eng.*, 7, 312–318, 2002.
- Borsuk, M. E., Stow, C. A., and Reckhow, K. H.: Confounding effect of flow on estuarine response to nitrogen loading, *J. Environ. Eng.*, 130, 605–614, 2004.
- Bricker, S. B., Clement, C. G., Pirhalla, D. E., Orlando, S. P., and Farrow, D. R. G.: National Estuarine Eutrophication Assessment, Effects of Nutrient Enrichment in the Nation's Estuaries, NOAA – NOS Special Projects Office and the National Centers for Coastal Ocean Science. Silver Spring, MD: 71 pp., 1999.
- Caraco, N. F. and Cole, J. J.: Regional-scale export of C, N, P and sediment: what river data tell us about key controlling variables, in: *Integrating Hydrology Ecosystem Dynamics and Biogeochemistry in Complex Landscapes*, edited by: Tenhunen, J. D. and Kabat, P., John Wiley, New York, 239–253, 1999.
- Clark, M. P. and Hay, L. E.: Use of medium-range numerical weather prediction model output to produce forecasts of streamflow, *J. Hydrometeorol.*, 5, 15–32, 2004.
- Cohn, T. A., Calder, D. L., Gilroy, E. J., Zynjuk, L. D., and Summers, R. M.: The validity of a simple statistical model for estimating fluvial constituent loads: an empirical study involving nutrient loads entering Chesapeake Bay, *Water Resour. Res.*, 28, 2353–2363, 1992.
- Devineni, N. and Sankarasubramanian, A.: Improved categorical winter precipitation forecasts through multimodel combinations of coupled GCMs, *Geophys. Res. Lett.*, 37, L24704, 2010.
- Devineni, N., Sankarasubramanian, A., and Ghosh, S.: Multi-model Ensembling of Probabilistic Streamflow Forecasts: Role of Predictor State Space in skill evaluation, *Water Resour. Res.*, 44, W09404, doi:10.1029/2006WR005855, 2008.

Role of weather forecasts in forecasting nutrient loadings

J. Oh et al.

[Title Page](#)

[Abstract](#)

[Introduction](#)

[Conclusions](#)

[References](#)

[Tables](#)

[Figures](#)

[⏪](#)

[⏩](#)

[◀](#)

[▶](#)

[Back](#)

[Close](#)

[Full Screen / Esc](#)

[Printer-friendly Version](#)

[Interactive Discussion](#)



Role of weather forecasts in forecasting nutrient loadings

J. Oh et al.

[Title Page](#)

[Abstract](#)

[Introduction](#)

[Conclusions](#)

[References](#)

[Tables](#)

[Figures](#)

[⏪](#)

[⏩](#)

[◀](#)

[▶](#)

[Back](#)

[Close](#)

[Full Screen / Esc](#)

[Printer-friendly Version](#)

[Interactive Discussion](#)

- Duff, J. H., Tesoriero, A. J., Richardson, W. B., Strauss, E. A., and Munn, M. D.: Whole stream response to nitrate loading in three streams draining agricultural landscapes, *J. Environ. Qual.*, 37, 1133–1144, 2008.
- Galloway, J. N., Schlesinger, W. H., Levy I, H., Michaels, A., and Schnoor, J. L.: Nitrogen fixation: Anthropogenic enhancement-environmental response, *Global Biogeochem. Cy.*, 9, 235–252, 1995.
- Georgakakos, A. P., Yao, H., and Georgakakos, K. P.: Upstream regulation adjustments to ensemble streamflow predictions, HRC Technical Report 7, Hydrologic Research Center, San Diego, CA, 30 June 2010 (NA08NWS4620023), 63 pp., 2010.
- Goolsby, D. A. and Battaglin, W. A.: Long-term changes in concentrations and flux of nitrogen in the Mississippi River basin, USA, *Hydrol. Process.*, 15, 1209–1226, 2001.
- Hamill, T. M., Whitaker, J. S., and Wei, X.: Ensemble reforecasting: Improving medium-range forecast skill using retrospective forecasts, *Mon. Weather Rev.*, 132, 1434–1447, 2004.
- Hamill, T. M., Whitaker, J. S., and Mullen, S. L.: Reforecasts, an important dataset for improving weather predictions, *B. Am. Meteorol. Soc.*, 87, 33–46, 2006.
- Howarth, R. W., Billen, G., Swaney, D., Townsend, A., Jaworski, N., Lajtha, K., Downing, A., Elmgreen, R., Caraco, N., Jordan, T., Berendse, F., Freney, J., Kudeyarov, V., Murdoch, P., and Zhao-liang, Z.: Regional nitrogen budgets and riverine N & P fluxes for the drainages to the North Atlantic Ocean: natural and human influences, *Biogeochemistry*, 35, 181–226, 1996.
- Lall, U. and Sharma, A.: A nearest neighbor bootstrap for resampling hydrologic time series, *Water Resour. Res.*, 32, 679–693, 1996.
- Lin, J., Xie, L., Pietrafesa, L. J., Ramus, J. S., and Paerl, H. W.: Water quality gradients across Albemarle-Pamlico estuarine system: Seasonal variations and model applications, *J. Coastal Res.*, 23, 213–229, 2007.
- Mahalanobis, P. C.: On the generalised distance in statistics, *Proceedings of the National Institute of Sciences of India*, 2, 49–55, 1936.
- Mcenery, J., Ingram, J., Duan, Q., Adams, T., and Anderson, L.: NOAA'S Advanced Hydrologic Prediction Service: Building Pathways for Better Science in Water Forecasting, *B. Am. Meteorol. Soc.*, 86, 375–385, 2005.
- North Carolina DENR Fiscal analysis for proposed nutrient strategy for Falls of Neuse Reservoir report: available at: http://portal.ncdenr.org/c/document_library/get_file?

Role of weather forecasts in forecasting nutrient loadings

J. Oh et al.

[Title Page](#)

[Abstract](#)

[Introduction](#)

[Conclusions](#)

[References](#)

[Tables](#)

[Figures](#)

[⏪](#)

[⏩](#)

[◀](#)

[▶](#)

[Back](#)

[Close](#)

[Full Screen / Esc](#)

[Printer-friendly Version](#)

[Interactive Discussion](#)

uuid=2a29f5a4-3db1-4c63-bd63-cad51a5ac385&groupId=38364 (last access: 8 December 2013), 2010.

Oh, J. and Sankarasubramanian, A.: Interannual hydroclimatic variability and its influence on winter nutrient loadings over the Southeast United States, *Hydrol. Earth Syst. Sci.*, 16, 2285–2298, doi:10.5194/hess-16-2285-2012, 2012.

Paerl, H. W., Valdes, L. M., Peierls, B. L., Adolf, J. E., and Harding, L. W.: Anthropogenic and climatic influences on the eutrophication of large estuarine ecosystems, *Limnol. Oceanogr.*, 51, 448–462, 2006.

Pinckney, J. L., Paerl, H. W., and Harrington, M. B.: Responses of the phytoplankton community growth rate to nutrient pulses in variable estuarine environments, *J. Phycol.*, 35, 1455–1463, 1999.

Prairie, J., Rajagopalan, B., Fulp, T., and Zagona, E.: Modified *K*-NN model for stochastic streamflow simulation, *J. Hydrol. Eng.*, 11, 371–378, 2006.

Rabalais, N. N., Turner, R. E., and Scavia, D.: Beyond science into policy: Gulf of Mexico hypoxia and the Mississippi River, *Bioscience*, 52, 129–144, 2002.

Rajagopalan, B. and Lall, U.: A *k*-nearest-neighbor simulator for daily precipitation and other weather variables, *Water Resour. Res.*, 35, 3089–3101, 1999.

Runkel, R. L., Crawford, C. G., and Cohn, T. A.: Load Estimator (LOADEST): A FORTRAN Program for Estimating Constituent Loads in Streams and Rivers, US Geological Survey Report, Reston, Virginia, 2004.

Salas, J. and Lee, T.: Nonparametric simulation of single-site seasonal streamflows, *J. Hydrol. Eng.*, 15, 284–296, 2010.

Sharif, M. and Burn, D.: Simulating climate change scenarios using an improved *K*-nearest neighbour model, *J. Hydrol.*, 325, 179–196, 2006.

Sinha, T. and Sankarasubramanian, A.: Role of climate forecasts and initial conditions in developing streamflow and soil moisture forecasts in a rainfall–runoff regime, *Hydrol. Earth Syst. Sci.*, 17, 721–733, doi:10.5194/hess-17-721-2013, 2013.

Slack, J. R., Lumb, A., and Landwehr, J. M.: Hydro-Climatic Data Network (HCDN) Streamflow Data Set, 1874–1988: US Geological Survey Report, 92–129, available at: <http://pubs.usgs.gov/wri/wri934076/> (last access: 8 December 2013), 1993.

Souza Filho, F. and Lall, U.: Seasonal to interannual ensemble streamflow forecasts for Ceara, Brazil: applications of a multivariate, semi-parametric algorithm, *Water Resour. Res.*, 39, 1307–1325, 2003.

Turner, R. E. and Rabalais, N. N.: Changes in Mississippi River Water Quality this Century, *Bioscience*, 41, 140–147, 1991.

Vecchia, A. V.: Relation Between Climate Variability and Stream Water Quality in the Continental United States, *Hydrol. Sci. Tech.*, 19, 77–98, 2003.

- 5 Vitousek, P. M., Aber, J. D., Howarth, R. W., Likens, G. E., Matson, P. A., Schindler, D. W., Schlesinger, W. H., and Tilman, G. D.: Human alteration of the global nitrogen cycle: Sources and consequences, *Ecol. Appl.*, 7, 737–750, 1997.

HESSD

10, 15625–15657, 2013

Role of weather forecasts in forecasting nutrient loadings

J. Oh et al.

Title Page

Abstract

Introduction

Conclusions

References

Tables

Figures



Back

Close

Full Screen / Esc

Printer-friendly Version

Interactive Discussion



Role of weather forecasts in forecasting nutrient loadings

J. Oh et al.

[Title Page](#)

[Abstract](#)

[Introduction](#)

[Conclusions](#)

[References](#)

[Tables](#)

[Figures](#)

[⏪](#)

[⏩](#)

[◀](#)

[▶](#)

[Back](#)

[Close](#)

[Full Screen / Esc](#)

[Printer-friendly Version](#)

[Interactive Discussion](#)

Table 1. Baseline information for the 18 selected stations. Values in the parentheses show the total number of daily total nitrogen loadings and concentration available for each station.

Station Index	Station Number	Station Name	Drainage Area (km ²)	Number of Years (# of daily Obs.)
1	2047000	Nottoway river near Sebrell, VA	3732.17	17 (95)
2	2083500	Tar river at Tarboro, NC.	5653.94	22 (152)
3	2126000	Rocky river near Norwood, NC	3553.46	14 (65)
4	2176500	Coosawhatchie river near Hampton, SC	525.77	13 (100)
5	2202500	Ogeechee river near Eden, GA	6863.47	20 (141)
6	2212600	Falling creek near Juliette, GA	187.00	14 (56)
7	2228000	Satilla river at Atkinson, GA	7226.07	20 (123)
8	2231000	St. Marys river near Macclenny, FL	1812.99	14 (108)
9	2321500	Santa Fe river at Worthington springs, FL	1489.24	21 (82)
10	2324000	Steinhatchee river near Cross city, FL	906.50	19 (92)
11	2327100	Sopchoppy river near Sopchoppy, FL	264.18	22 (125)
12	2329000	Ochlockonee river near Havana, FL	2952.59	22 (133)
13	2358000	Apalachicola river at Chattahoochee, FL	44 547.79	23 (152)
14	2366500	Choctawhatchee river near Bruce, FL	11 354.51	21 (119)
15	2368000	Yellow river at Milligan, FL	1616.15	21 (123)
16	2375500	Escambia river near Century, FL	9885.98	22 (145)
17	2479155	Cypress creek near Janice, MS	136.23	16 (54)
18	2489500	Pearl river near Bogalusa, LA	17 023.99	12 (57)

HESSD

10, 15625–15657, 2013

Role of weather forecasts in forecasting nutrient loadings

J. Oh et al.

[Title Page](#)
[Abstract](#)
[Introduction](#)
[Conclusions](#)
[References](#)
[Tables](#)
[Figures](#)
[⏪](#)
[⏩](#)
[◀](#)
[▶](#)
[Back](#)
[Close](#)
[Full Screen / Esc](#)
[Printer-friendly Version](#)
[Interactive Discussion](#)

Table 2. Station ID, number of selected PCs, and cumulative Eigen values for large scale precipitation grids from the NOAA's GFS model, which provide 1 day ahead precipitation forecasts (Grid numbers are shown in Fig. 1).

Station ID	Selected Grids (total # of selected grids)	# of Selected PCs	Cumulative Eigen value of selected PCs
1	5, 7, 12, 19–21 (6)	4	0.962
2	5, 7, 12 (3)	2	0.905
3	4–5, 11–13, 18–20 (8)	4	0.948
4	11–13, 18–20, 27 (7)	3	0.909
5	17–18, 24–27 (6)	3	0.922
6	9–12, 16–19, 23–26 (12)	4	0.903
7	24–26, 31–33 (6)	3	0.918
8	17–19, 24–26, 31–33 (9)	4	0.918
9	17–19, 24–26, 31–33 (9)	4	0.918
10	16–19, 23–26, 30–33 (12)	5	0.921
11	16–18, 23–25, 30–32 (9)	4	0.930
12	16, 30–32 (4)	3	0.975
13	23–25, 30–32 (6)	3	0.934
14	18, 22–25, 30–32 (8)	4	0.938
15	18, 22, 24 (3)	2	0.912
16	22, 29–31 (4)	3	0.977
17	15–17, 22–24, 29–31 (9)	4	0.929
18	17, 22–24, 30–31 (6)	3	0.932

Role of weather forecasts in forecasting nutrient loadings

J. Oh et al.

Title Page

Abstract

Introduction

Conclusions

References

Tables

Figures

⏪

⏩

◀

▶

Back

Close

Full Screen / Esc

Printer-friendly Version

Interactive Discussion

Table 3. Performance of LOADEST model in predicting the observed TN loadings from the WQN database. Models with linear time components (Model No: 3, 5, 7–9) are not considered.

Station Index	R^2 (Daily)	AIC (Daily)	Model No	Coefficients of selected LOADEST model				
				a_0	a_1	a_2	a_3	a_4
1	0.948	0.892	4	6.768	1.114	-0.283	-0.069	
2	0.966	-0.131	4	8.122	0.980	0.108	-0.018	
3	0.966	0.496	4	8.863	1.066	-0.195	0.090	
4	0.956	0.905	6	4.446	1.013	0.026	0.238	-0.036
5	0.916	0.837	4	7.721	1.069	-0.084	-0.317	
6	0.853	2.094	1	2.647	1.095			
7	0.968	0.518	6	7.521	1.005	-0.025	-0.083	0.103
8	0.963	0.250	6	6.428	1.088	-0.075	-0.027	0.187
9	0.986	-0.219	6	5.690	1.086	-0.037	-0.078	0.059
10	0.979	0.279	6	5.549	1.241	-0.069	-0.096	0.071
11	0.979	0.516	6	4.351	1.139	-0.043	0.187	0.007
12	0.923	0.585	1	7.341	0.846			
13	0.902	0.193	4	10.563	0.981	0.074	0.165	
14	0.835	0.423	4	9.077	0.931	-0.145	-0.042	
15	0.834	1.085	6	7.238	1.123	-0.131	-0.004	0.176
16	0.873	0.758	4	8.868	1.039	0.147	0.032	
17	0.912	1.233	4	4.555	1.188	0.206	0.328	
18	0.899	0.853	1	10.193	1.047			

Role of weather forecasts in forecasting nutrient loadings

J. Oh et al.

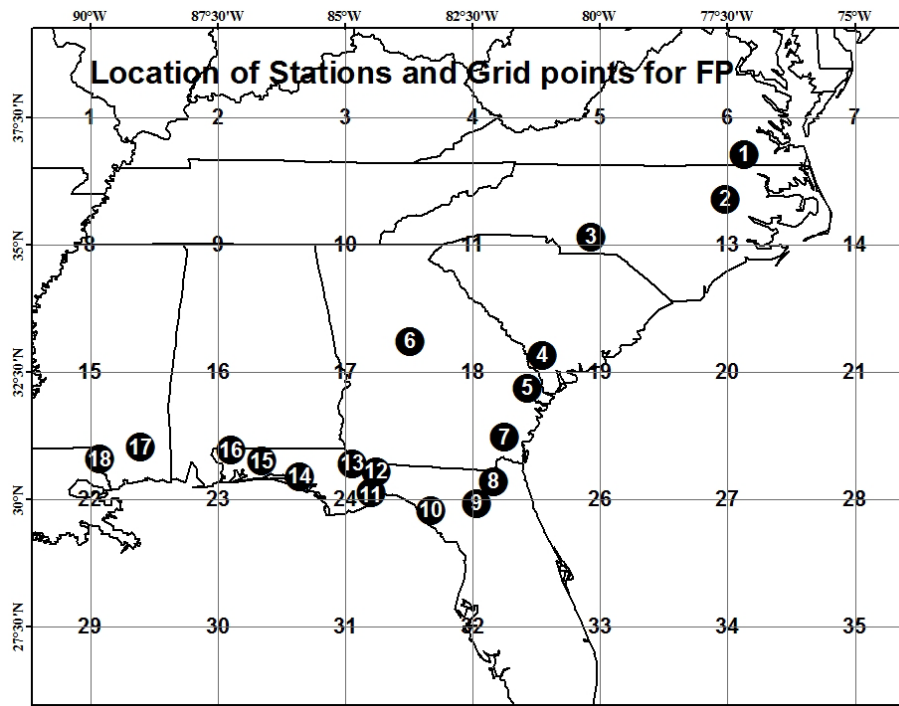


Fig. 1. Locations of 18 water quality monitoring stations and grids of forecasted precipitation from NOAA's reforecast model.

[Title Page](#)[Abstract](#)[Introduction](#)[Conclusions](#)[References](#)[Tables](#)[Figures](#)[⏪](#)[⏩](#)[◀](#)[▶](#)[Back](#)[Close](#)[Full Screen / Esc](#)[Printer-friendly Version](#)[Interactive Discussion](#)

Role of weather forecasts in forecasting nutrient loadings

J. Oh et al.

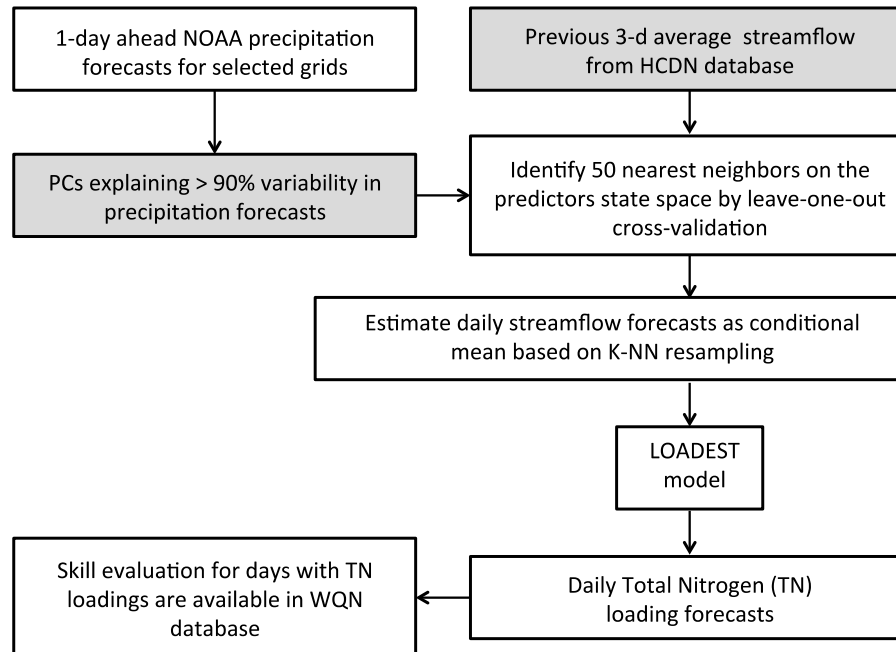


Fig. 2. Schematic diagram illustrating the overall approach to forecast daily streamflow and total nitrogen loadings conditioned on the predictors (gray boxes), daily weather forecasts and daily average streamflow values for previous 3 days, based on Kernel-Nearest Neighbor (*K*-NN) resampling approach.

HESSD

10, 15625–15657, 2013

Role of weather forecasts in forecasting nutrient loadings

J. Oh et al.

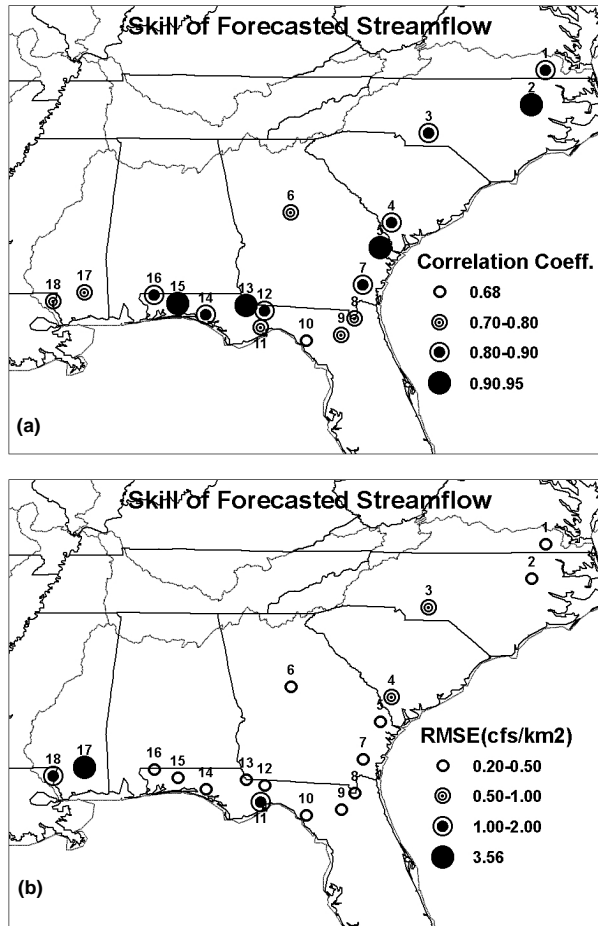


Fig. 3. (a) Rank correlation and (b) RMSE (cfs per unit area) between observed daily streamflow and forecasted daily streamflow for those days with TN loadings being available in the WQN database.

[Title Page](#)

[Abstract](#) | [Introduction](#)

[Conclusions](#) | [References](#)

[Tables](#) | [Figures](#)

[⏪](#) | [⏩](#)

[◀](#) | [▶](#)

[Back](#) | [Close](#)

[Full Screen / Esc](#)

[Printer-friendly Version](#)

[Interactive Discussion](#)



Role of weather forecasts in forecasting nutrient loadings

J. Oh et al.

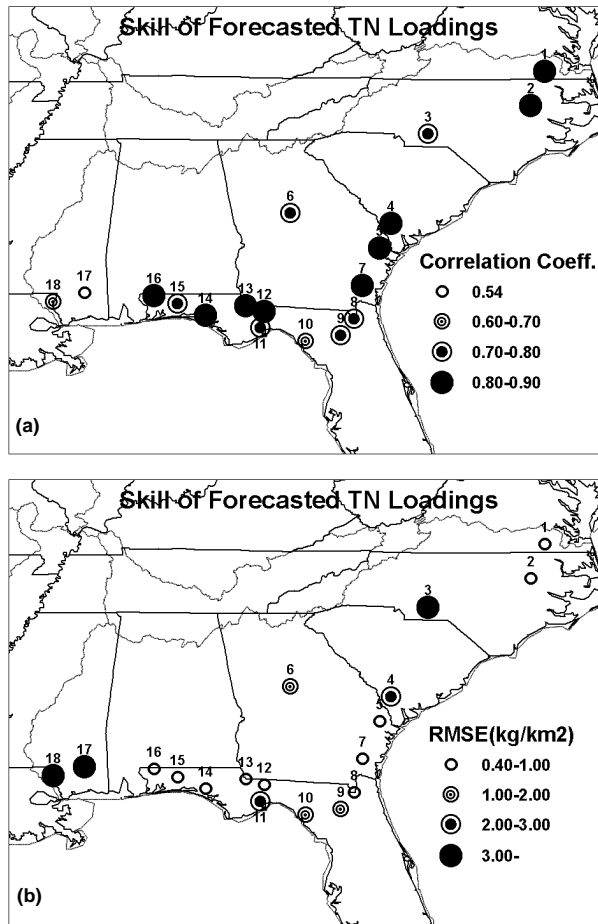


Fig. 4. (a) Rank correlation and **(b)** RMSE between observed TN loadings and forecasted TN loadings for those days with TN loadings being available in the WQN database.

[Title Page](#)

[Abstract](#) | [Introduction](#)

[Conclusions](#) | [References](#)

[Tables](#) | [Figures](#)

[⏪](#) | [⏩](#)

[⏴](#) | [⏵](#)

[Back](#) | [Close](#)

[Full Screen / Esc](#)

[Printer-friendly Version](#)

[Interactive Discussion](#)

Role of weather forecasts in forecasting nutrient loadings

J. Oh et al.

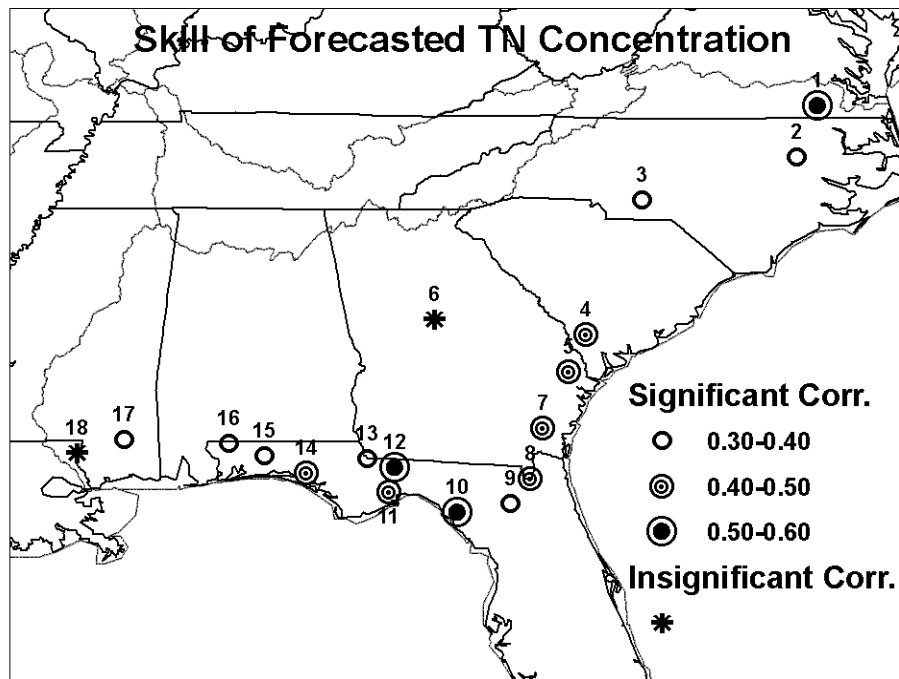


Fig. 5. Correlation between observed TN concentration and forecasted TN concentration for those days with TN loadings being available in the WQN database.

Role of weather forecasts in forecasting nutrient loadings

J. Oh et al.

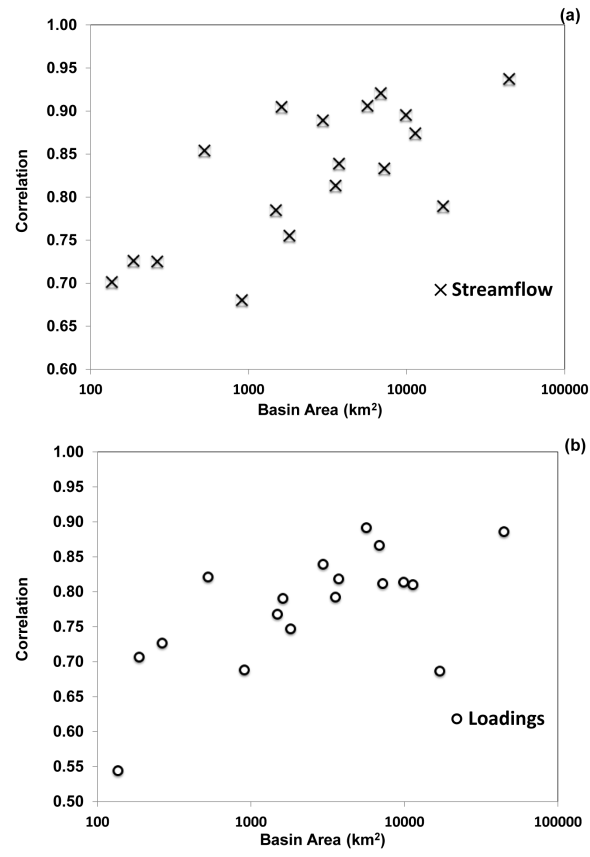


Fig. 6. Variability in Skill on predicting observed (a) streamflow and (b) TN loadings as a function of drainage area.

[Title Page](#)[Abstract](#)[Introduction](#)[Conclusions](#)[References](#)[Tables](#)[Figures](#)[⏪](#)[⏩](#)[◀](#)[▶](#)[Back](#)[Close](#)[Full Screen / Esc](#)[Printer-friendly Version](#)[Interactive Discussion](#)

Role of weather forecasts in forecasting nutrient loadings

J. Oh et al.

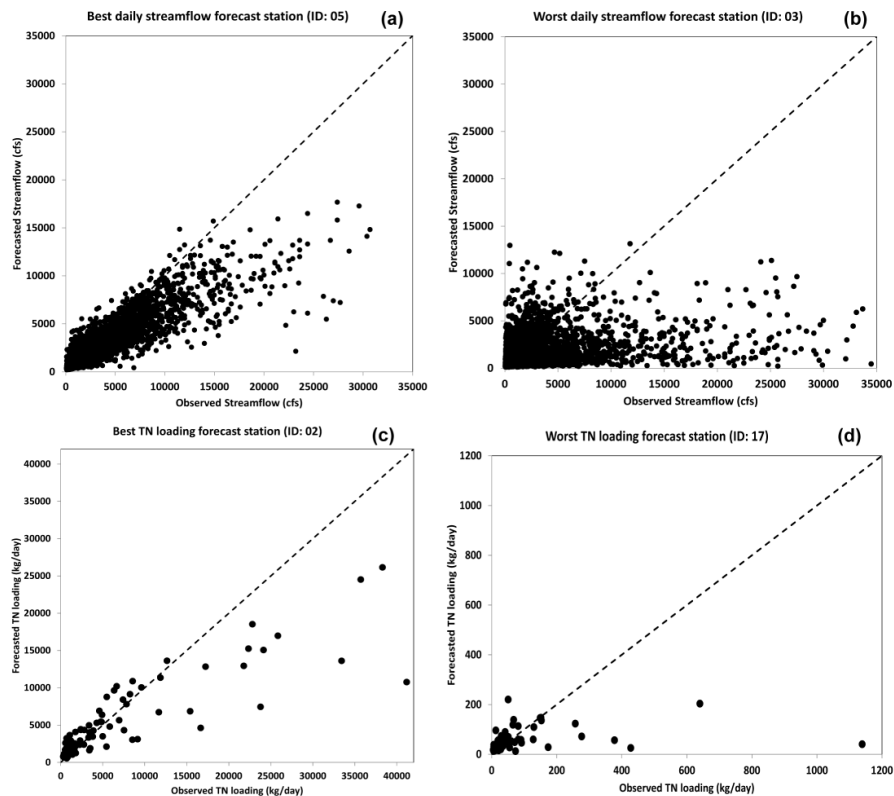


Fig. 7. Comparison of observations and forecasts of streamflow (**a** and **b**) and TN loadings (**c** and **d**) for the stations with best (Streamflow: Ogeechee river near Eden, GA, TN: Tar river at Tarboro, NC) and worst forecasting skill (Streamflow: Rocky river near Norwood, NC, TN: Cypress creek near Janice, MS).

Role of weather forecasts in forecasting nutrient loadings

J. Oh et al.

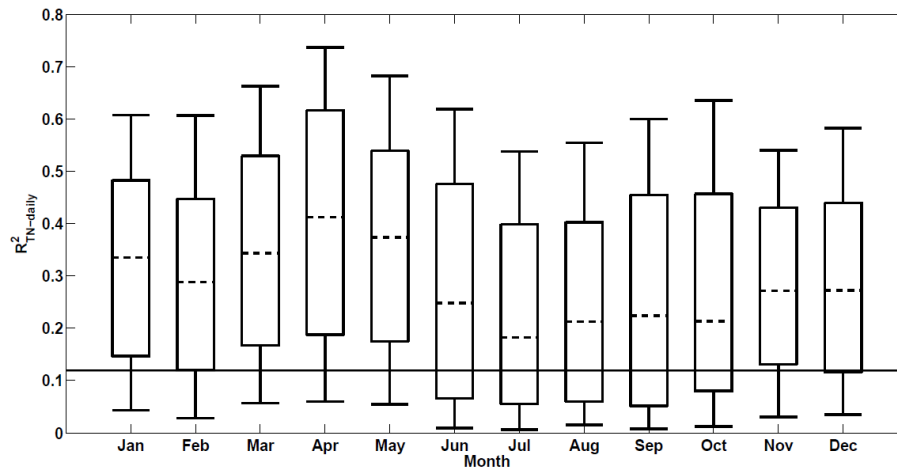


Fig. 8. Box plot showing rank correlations between observed daily streamflow and forecasted streamflow aggregated over each month from 1979 to 2009 period. Each plot includes 558 correlations (18 stations \times 31 yr). The solid line represents the statistically significant (95%) R^2 corresponding to the null hypothesis that R^2 being equal to zero.

[Title Page](#)[Abstract](#)[Introduction](#)[Conclusions](#)[References](#)[Tables](#)[Figures](#)[⏪](#)[⏩](#)[◀](#)[▶](#)[Back](#)[Close](#)[Full Screen / Esc](#)[Printer-friendly Version](#)[Interactive Discussion](#)