



Temporal and spatial changes of water quality of Dianchi Lake

T. Zhang et al.

This discussion paper is/has been under review for the journal Hydrology and Earth System Sciences (HESS). Please refer to the corresponding final paper in HESS if available.

Temporal and spatial changes of water quality and management strategies of Dianchi Lake in southwest China

T. Zhang¹, W. H. Zeng¹, S. R. Wang², and Z. K. Ni²

¹State Key Laboratory of Water Environment Simulation, School of Environment, Beijing Normal University, Beijing, China

²Research Center of Lake Environment, Chinese Research Academy of Environment Sciences, Beijing, China

Received: 4 December 2013 – Accepted: 5 December 2013 – Published: 17 December 2013

Correspondence to: W. H. Zeng (zengwh@bnu.edu.cn)

Published by Copernicus Publications on behalf of the European Geosciences Union.

[Title Page](#)

[Abstract](#)

[Introduction](#)

[Conclusions](#)

[References](#)

[Tables](#)

[Figures](#)



[Back](#)

[Close](#)

[Full Screen / Esc](#)

[Printer-friendly Version](#)

[Interactive Discussion](#)



Abstract

Temporal and spatial changes to the water quality of Dianchi Lake in Southwest China were investigated using monthly monitoring data from 2005 to 2012. Based on the analysis of total phosphorus (TP), total nitrogen (TN), and chlorophyll *a* (Chl *a*) concentrations, it was determined that, in Caohai Lake, the annual concentrations of these variables ranged from 0.19–1.46, 6.11–16.79, 0.06–0.14 mg L⁻¹, respectively. In addition, the annual concentrations of TP, TN and Chl *a* in Waihai Lake ranged between 0.13–0.20, 1.82–3.01, 0.04–0.09 mg L⁻¹, respectively. Cluster Analysis (CA) classified the 10 monitoring sites into two groups (group A and group B) based on similarities of water quality characteristics. Our data revealed that the current status of water quality within Caohai Lake was much worse than that of Waihai Lake. Water quality was seriously degraded during the economic boom near the period of the “Eleventh Five-Year Plan” (2005–2010), and gradually improved from 2010 to 2012 because of the “standard emission directive to industry”. The main factors that influenced the spatial and temporal changes to water quality were natural factors including lake evolution and regional characteristic as well as human factors such as pollution load into the lake and management strategies that were already adopted. Some activities and regulations were implemented to enhance the lake environment by controlling wastewater emissions and establishing regulations to protect the lakes in the Yunnan Province. However, problems with institutional fragmentation (horizontal and vertical), simple treatment methods, low-intensity investment in pollution control, and lack of meaningful endogenous pollution control strategies were still present in the lake management strategy. To solve these problems, suitable control measures are needed, especially considering the current old-age status of Dianchi Lake. The fundamental improvement of the water quality within Caohai Lake was dependent on the measures taken in the upper reaches of the Caohai Watershed, including further recovery of submerged plants, resource utilization by floating plants and the reinforcement of sediment disposal. Management strategies for endogenous pollution in Waihai Lake were mainly dependent

Temporal and spatial changes of water quality of Dianchi Lake

T. Zhang et al.

Title Page

Abstract

Introduction

Conclusions

References

Tables

Figures

⏪

⏩

◀

▶

Back

Close

Full Screen / Esc

Printer-friendly Version

Interactive Discussion



determine Dianchi Lake's primary problems. In addition, the current status of the old-age lake will be considered, and some management strategies tailored to the evolution course of Dianchi Lake will be given. The results of this study will be useful to the policy makers in China that are making decisions regarding control of environmental problems in Dianchi Lake.

2 Material and methods

2.1 Study area and monitoring sites

Dianchi Lake (24°40'–25°02' N, 102°36'–102°47' E) is a rift lake that is located in Kunming City in the Yunnan Province of Southwest China (Fig. 1). Its average water depth is approximately 5 m, its maximum water depth is 8 m, and its surface area is approximately 306 km² (Du et al., 2011). Dianchi Lake is divided into two parts, Caohai Lake and Waihai Lake, by a manmade dike. Caohai Lake lies at the north of Dianchi Lake, while Waihai Lake is the main water body of Dianchi Lake and accounts for 96.7 % of the whole area of the lake.

Previous paleoenvironmental studies have shown that based on the long-term evolution of Dianchi Lake, it has been classified as an old-age lake (Yu et al., 1990). In addition, the ecological environment in Dianchi Lake has seriously deteriorated since the 1960s because of rapid economic development and its associated human activities, such as cultivation and fishing (Gao et al., 2004; Wang et al., 2009; Guo et al., 2013).

Data for lake water quality from 2005–2012 were provided by the Center for Environmental Monitoring in Kunming, Yunnan Province. Twelve water quality parameters, including dissolved oxygen (DO), permanganate index (COD_{Mn}), biological oxygen demand (BOD₅), ammonia (NH₄⁺-N), chemical oxygen demand (COD), total phosphorus (TP), total nitrogen (TN), and chlorophyll *a* (Chl *a*) were collected monthly from the monitoring stations.

Temporal and spatial changes of water quality of Dianchi Lake

T. Zhang et al.

Title Page

Abstract

Introduction

Conclusions

References

Tables

Figures

⏪

⏩

◀

▶

Back

Close

Full Screen / Esc

Printer-friendly Version

Interactive Discussion



Temporal and spatial changes of water quality of Dianchi Lake

T. Zhang et al.

Title Page

Abstract

Introduction

Conclusions

References

Tables

Figures

⏪

⏩

◀

▶

Back

Close

Full Screen / Esc

Printer-friendly Version

Interactive Discussion



The sampling points are shown in Fig. 1. Ten water quality sampling points were established for monitoring water quality in Dianchi Lake. Of these points, two were in Caohai Lake (points 1 and 2) and the other eight were in Waihai Lake. The names of each of the sampling points from 1 to 10 were: Duanqiao (DQ), the center of Caohai (CH), Luojiaying (LJY), middle of Huiwan (HW), Guanyinshan West (GYSW), middle of Guanyinshan (GYSM), Guanyinshan East (GYSE), Baiyukou (BYK), Haikou West (HKX) and Dianchi South (DCS). The sampling depth at each point was 0.5 m below the water surface, and the monitoring frequency was once a month.

2.2 Study methodology

Statistical analysis was conducted using the SPSS 20.0 software package. One-way ANOVA (LSD test) and independent-sample t tests at the 0.05 confidence level were conducted to test the difference between group mean values. A two-tailed Pearson correlation analysis was conducted to illustrate the correlative relationships between water parameters. Cluster analysis (CA) was used to analyze the similarities and grouping of samples in spatial dimensions. CA is an unsupervised pattern detection method that partitions all dissimilar cases into different groups (Shrestha and Kazama, 2007; Lu et al., 2011). The Euclidean distance usually gives the similarity between two samples; a distance can be represented by the difference between the transformed values of the samples (Zhou et al., 2007).

3 Results

3.1 Temporal changes of TP, TN and Chl a in Dianchi Lake

Temporal changes in TN, TP, and Chl a are shown in Figs. 2 and 3 and were based on the monitoring data collected at ten sites in Dianchi Lake from 2005 to 2012.

Monthly concentrations of TP, TN and Chl a in Caohai Lake ranged from 0.08 mgL⁻¹ (November 2011) to 2.56 mgL⁻¹ (September 2006), 2.42 mgL⁻¹ (September 2011)

Temporal and spatial changes of water quality of Dianchi Lake

T. Zhang et al.

Title Page

Abstract

Introduction

Conclusions

References

Tables

Figures

⏪

⏩

◀

▶

Back

Close

Full Screen / Esc

Printer-friendly Version

Interactive Discussion

degraded during the economic boom during the period of the “Eleventh Five-Year Plan” and (2) 2010–2012, when water quality gradually improved because of the “standard emission directive to industry”. A series of environmental problems arose during the first stage due to a lack of environmental consciousness by managers at different government levels (Wang and Lin, 2010; Veld and Shogren, 2012). Three indicators reached their maximum during this period: TP in 2006 with a value of 2.56 mgL^{-1} , TN in 2009 with a value of 21.6 mgL^{-1} , and Chl *a* in 2007 with a value of $0.52 \text{ } \mu\text{gL}^{-1}$. In the second stage, from 2010 to 2012, the indicator values declined, especially in Caohai Lake. The improvement was related to the Chinese government and the Yunnan Province placing great importance on the management of the Dianchi Lake watershed.

3.2 Spatial changes of TP, TN and Chl *a* in Dianchi Lake

Spatial CA produced a dendrogram with two groups (Fig. 4). Cluster A comprised sites 1–2, and cluster B contained sites 8–10. Group B was further divided into two clusters: sites 8–10 in cluster B and the other sites in cluster C. All classifications had varied significance levels because the sites within the groups had similar natural backgrounds and were likely affected by similar pollution sources. Sites 1–2 in cluster A were located in Caohai Lake and were primarily impacted by industrial wastewater, agricultural runoff, and municipal sewage, which corresponded to areas with relatively high pollution. The other sites in cluster B were located in Waihai Lake, with sites 3–7 located in the northern part of Waihai Lake and sites 8–10 located in the southern part of the lake. Clusters A (sites 1–2) and B (sites 8–10) corresponded to relatively high and low polluted regions, respectively. These results suggest that pollution control treatments should be assessed in each region.

4 Discussion

4.1 Reason analysis for temporal and spatial distribution of water quality

4.1.1 Natural factors

Dianchi Lake is a typical plateau lake in China. The tributaries that flow into the lake outnumber those that go out of the lake and water resources are scarce. As a result, the water renewal period is much longer. In this case, inputs of salts and other substances could easily accumulate in the lake (Wang and Dou, 1999). During the long-term evolution of Dianchi Lake, factors such as fragile ecological conditions, a shallow water level, insufficient inflow, and the age stage of the lake have caused the pollution in the lake to be more serious and the water quality to become increasingly deteriorated. The spatial distribution of water quality is related to the regional characteristics and development of the Dianchi basin; different areas were not the same as others, so the changes in water quality appeared to have different tendencies. The spatial changes in water quality showed that Caohai Lake was seriously polluted because Caohai Lake was the only water body that received domestic sewage and wastewater from treatment plants in the western part of the main urban area.

4.1.2 Human factors

The main sources of pollution in Dianchi Lake were the large population and the irrational exploitation of resources. Industrial pollution, agriculture pollution, and other domestic pollution, which directly threatened the water quality of Dianchi Lake, were the primary causes of water eutrophication in Dianchi Lake. There were also many agricultural lands and farms around the lake, which produced large amounts of agricultural non-point source pollution. This run-off could not be effectively controlled and thereby contributed to high levels of pollution.

Temporal and spatial changes of water quality of Dianchi Lake

T. Zhang et al.

[Title Page](#)

[Abstract](#)

[Introduction](#)

[Conclusions](#)

[References](#)

[Tables](#)

[Figures](#)

[⏪](#)

[⏩](#)

[◀](#)

[▶](#)

[Back](#)

[Close](#)

[Full Screen / Esc](#)

[Printer-friendly Version](#)

[Interactive Discussion](#)



Temporal and spatial changes of water quality of Dianchi Lake

T. Zhang et al.

Title Page

Abstract

Introduction

Conclusions

References

Tables

Figures

⏪

⏩

◀

▶

Back

Close

Full Screen / Esc

Printer-friendly Version

Interactive Discussion

Flowers and plants are the local specialty of the Yunnan Province. Due to the large planting area and high fertilizer usage, undegraded and unabsorbed fertilizer was washed into the water (Gao and Yang, 2006). However, abundant rock phosphate was found around Waihai Lake. Because of the unreasonable mining and wanton destruction of surface vegetation, a large amount of phosphorus entered Waihai Lake and gradually accumulated during the evolution of the lake, eventually becoming a substantial threat to the water quality (Tanaka et al., 2013).

In addition, endogenous pollution is a factor that should not be ignored. Due to the long period of eutrophication, Dianchi Lake is covered with a thick layer of sediment, which contains humus and organic matter and could become another source of pollution to the water column. According to research, 187 446 t of phosphorus was contained in 0.3 m of sediment, an amount that was 500 times greater than the phosphorus contained in the water column (Guo, 2003). Therefore, when the concentration of nitrogen and phosphorus in the water decreases, the nitrogen and phosphorus in the sediments will spontaneously release and become another major source of pollution.

Additionally, the temporal distribution of water quality in Caohai Lake and Waihai Lake showed that the year-to-year differences in water quality were also related to the control strategies that were adopted. Inappropriate management measures will not lead to any further improvements to water pollution. Conversely, if we take suitable control measures, they will significantly improve the water quality status.

4.2 Overview of pollution control strategies in Dianchi Lake

4.2.1 Issues related to the management of Dianchi Lake

Zero o'clock action

Dianchi Lake is included in the national “three rivers and three lakes” pollution control project outlined in the “Ninth Five-Year Plan” (1996–2000). Meanwhile, Yunnan Province and Kunming City have taken a series of measures to improve water

conditions in Dianchi Lake. Particularly due to the implementation of “Zero o’clock Action”, industrial pollution has been effectively controlled.

In 1999 the “standard emission directive to industry” was issued. It instructed companies around the Dianchi watershed to treat their discharged wastewater appropriately by zero o’clock on the 1 May 1999 to meet the state wastewater emission standard. If any company did not meet the standard by the deadline, it would be required to stop operations or it would be closed. This was called “Zero o’clock Action” (Q. G. Wang et al., 2006; Y. Wang et al., 2006). The industrial pollution control effect was remarkable and was particularly evident around Dianchi Lake, where 249 major enterprises completed the task. The total amount of industrial pollution into the lake was thus reduced from 10–30 to 2–14 % (He et al., 2011).

However, some problems still remain. Many factories made some temporary changes to meet the mission standards set by the government. Once the region was no longer being scrutinized, these companies returned to their prior polluting methods. In addition, many factories were not examined or punished due to a lack of monitoring capacity.

Regulations for the protection of Dianchi Lake in the Yunnan province

Given the environmental deterioration and the demand for clean water, the “Regulations for Protection of Dianchi Lake in Yunnan Province” were passed by the Yunnan provincial government, with implementation beginning on the 1 January 2013. The main features of these regulations include the following:

- The Yunnan Provincial government and the government at all levels will incorporate the protection work of Dianchi Lake into the national economy and social development planning, meanwhile establishing the protection and long-term mechanisms of ecological compensation.

HESSD

10, 15409–15432, 2013

Temporal and spatial changes of water quality of Dianchi Lake

T. Zhang et al.

Title Page

Abstract

Introduction

Conclusions

References

Tables

Figures

⏪

⏩

◀

▶

Back

Close

Full Screen / Esc

Printer-friendly Version

Interactive Discussion

Temporal and spatial changes of water quality of Dianchi Lake

T. Zhang et al.

Title Page

Abstract

Introduction

Conclusions

References

Tables

Figures

⏪

⏩

◀

▶

Back

Close

Full Screen / Esc

Printer-friendly Version

Interactive Discussion

- The Dianchi Lake Basin will be divided into three protected areas and an urban drinking water source protection area and will be protected according to the above classifications.
- Reclaiming land from lakes, fish cage aquaculture, and excessive discharge of wastewater and solid waste in the lake will be banned.
- Specific rewards for contributing to the protect Dianchi Lake will be offered, and legal penalties for activities that violate the regulations will be imposed.

Before the announcement of these regulations, other regulations that protected Dianchi Lake were established by Kunming City in July 1988. Over the past 24 yr, the regulations have played an important role in protecting resources, combating pollution, and improving the ecological environment. However, with the rapid development of the social economy, environmental protection of Dianchi Lake, water ecological balance, and other aspects of water supply and demand have become increasingly prominent. In the wake of so many new problems, provincial, rather than municipal, regulations are needed to resolve these issues. Although the new regulations have met the regulations for improving the lake environment, their long-term efficacy depends on many other factors such as the active collaboration of various sectors of government agencies and enhanced public consciousness about environmental protection.

4.2.2 Strategies for pollution control in Dianchi Lake

Lake dredging

Serious pollutants within the lake have deposited a large amount of silt, which contain various harmful and toxic pollutants that have accumulated over the years. Through the Phase I, II, III projects of lake dredging, 424 000 t sediment from Caohai Lake were transferred by dredging, which has significantly improved the water quality of Caohai Lake (Ding and Lai, 2011).

Pollutant interception

Sewage and garbage are the main sources of pollution in Dianchi Lake. By 2005, eight sewage treatment plants has been built in the Dianchi Lake Basin and newly renovated and expanded trunk sewers were approximately 590 km. The sewage collection rate could reach 74 %. Meanwhile, the urban garbage removal rate is 95 %, and the harmless treatment rate is 93.6 % (Ding and Lai, 2011).

Eutrophication control

Serious eutrophication was the main problem in Dianchi Lake. In 1999, Kunming City put 240 t of drugs into Caohai Lake, which cost approximately 6 million Yuan, to remove algae. Although it had some effect on algal control, there were certain drugs that caused adverse impacts on benthic animals and zooplankton. Therefore, as learned by the practice of Kunming City, using a chemical method to remove algae in a large area of the lake is not suitable. A physical method of removal of the floating algae on the water is another option; however, the energy consumption and product cost are high so it cannot be used at a large scale (J. e et al., 2012). A third method employs biotechnology. The water hyacinth can curb the spread of algae; however, once the growth of algae is under effective control, the water hyacinth can become a new pollutant. From the above perspectives, the control of algae is still a worldwide problem (Jin et al., 2008; Yan et al., 2012).

4.2.3 Main problems in the current management strategy

The environmental management of Dianchi Lake has occurred over several years, and some activities and regulations have been implemented to enhance the lake environment by controlling wastewater emissions and establishing regulations to protect the lakes in the Yunnan Province. However, the effect on the control of lake eutrophication is still unsatisfactory, and there are problems with institutional fragmentation

HESSD

10, 15409–15432, 2013

Temporal and spatial changes of water quality of Dianchi Lake

T. Zhang et al.

Title Page

Abstract

Introduction

Conclusions

References

Tables

Figures

⏪

⏩

◀

▶

Back

Close

Full Screen / Esc

Printer-friendly Version

Interactive Discussion



Temporal and spatial changes of water quality of Dianchi Lake

T. Zhang et al.

[Title Page](#)

[Abstract](#)

[Introduction](#)

[Conclusions](#)

[References](#)

[Tables](#)

[Figures](#)

[⏪](#)

[⏩](#)

[◀](#)

[▶](#)

[Back](#)

[Close](#)

[Full Screen / Esc](#)

[Printer-friendly Version](#)

[Interactive Discussion](#)

(horizontally and vertically), simple treatment methods, low-intensity investment in pollution control, and a lack of meaningful endogenous pollution control strategies. For example, with lake dredging, the third phase project has already been put into effect. However, despite more than ten years of hard work, only one-tenth of the silt has been cleared out of the lake. Pollutant interception around the lake has been completed, but there are still questions of how to improve efficiency. Considering these kinds of issues and the deficiencies of the available treatment methods, we should analyze the current status of the lake evolution stage and form suitable management strategies for appropriate actions. This will provide a basis for ecological restoration planning and policy making in the future.

4.3 Management strategy for Dianchi Lake

It has been reported in many studies that Dianchi Lake, which was formed in approximately 3000 ka BP during the late Pliocene, has entered old-age status in its evolution. Considering its current status, the environmental problems that face Dianchi Lake should be managed differently than those in other lakes, such as Lugu Lake, which is a younger-age lake. As a result, when creating the management strategies for Dianchi Lake, we should consider the function of the lake and protect it through a different classification level.

The “Six Key Programs”, including lake interception, ecological restoration, river training, lake dredging, water source protection and water diversion, have made great contributions to water pollution control. Based on the above management strategies and the evolution stage of Dianchi Lake, we should adopt appropriate methods and governing tactics. The water quality in Caohai Lake is below Class V and is now in a heavy eutrophic state. During its long-term evolution, the lake deposited a layer of silt, which is now another source of pollution to the water. Therefore, strengthening endogenous pollution control is the key task for pollution control, and the fundamental improvement of water quality of Caohai Lake depends on the measures taken in the upper reaches of the Caohai Watershed, including further recovery of submerged plants,

Temporal and spatial changes of water quality of Dianchi Lake

T. Zhang et al.

[Title Page](#)

[Abstract](#)

[Introduction](#)

[Conclusions](#)

[References](#)

[Tables](#)

[Figures](#)

[⏪](#)

[⏩](#)

[◀](#)

[▶](#)

[Back](#)

[Close](#)

[Full Screen / Esc](#)

[Printer-friendly Version](#)

[Interactive Discussion](#)

resource utilization of floating plants and the reinforcement of sediment disposability. As such, the swamping trend and the aging process of Dianchi Lake could be stunted. Waihai Lake is the main water body of Dianchi Lake, and the water quality there is also below Class V and in a moderate eutrophic state. The management strategies for endogenous pollution in Waihai Lake are mainly based on restocking algae-eating fish and the ecological restoration of macrophytes. Only by choosing suitable comprehensive control measures that consider the temporal and spatial changes of water quality can the pollution status of Dianchi Lake be changed.

Beyond that, we should accelerate the development of water transfer projects to carry out water diversion to Dianchi Lake and prevent water shortages in the area. We could thus increase the water circulation rate, shorten the residence time of water, and change the state of Dianchi Lake.

5 Conclusions

The Dianchi basin played a significant role in the social stability and the economic development of the Yunnan Province. This paper has focused on temporal and spatial changes in the water quality and the management strategy for Dianchi Lake. Based on analysis of the water parameters from 2005 to 2012, it was shown that the current status of water quality in Caohai Lake was much worse than that of Waihai Lake, and the water quality in the study area experienced two different periods from 2005 to 2012. Water quality seriously degraded during the economic boom around the period of the “Eleventh Five-Year Plan” (2005–2010) due to a combination of natural factors and human activities. It then gradually improved from 2010 to 2012 because of the “standard emission directive to industry”. Although some activities and regulations were implemented to enhance the lake environment, many problems were still present in the lake management strategy. To solve these problems, it is important that suitable control measures are chosen that account for the temporal and spatial changes of water quality in this old-age lake.

Temporal and spatial changes of water quality of Dianchi Lake

T. Zhang et al.

[Title Page](#)

[Abstract](#)

[Introduction](#)

[Conclusions](#)

[References](#)

[Tables](#)

[Figures](#)

[⏪](#)

[⏩](#)

[◀](#)

[▶](#)

[Back](#)

[Close](#)

[Full Screen / Esc](#)

[Printer-friendly Version](#)

[Interactive Discussion](#)

- Wang, X. D., Zhang, S. S., Liu, S. L., and Chen, J. W.: A two-dimensional numerical model for eutrophication in Baiyangdian Lake, *Front. Environ. Sci. Eng.*, 6, 815–824, 2012.
- Wang, Y., Zhang, Z. K., Zhu, D. K., Yang, J. H., Mao, L. J., and Li, S. H.: River-sea interaction and the north Jiangsu plain formation, *Quatern. Sci.*, 26, 301–319, 2006.
- 5 Wu, Y. H., Wu, R. J., Xue, B., Qian, J. L., and Xiao, J. Y.: Paleoenvironmental Evolution in Dianchi Lake area since 13 ka BP, *J. Lake Sci.* 10, 5–9, 1998.
- Xia, J., Zhang, Y. Y., Zhan, C. S., and Ye, A. Z.: Water quality management in China: the case of the Huai River Basin, *Int. J. Water Resour. D.*, 27, 167–180, 2011.
- Xing, K. X., Guo, H. C., Sun, Y. F., and Huang, Y. T.: Assessment of the spatial-temporal eu-
trophic character in the Lake Dianchi, *J. Geogr. Sci.*, 15, 37–43, 2005.
- 10 Yan, S. H., Wang, Y., Wang, Z., and Guo, J. Y.: Remediation effects of experimental project using water hyacinth for pollution control in the Lake Caohai, Dianchi, *Jiangsu J. Agr. Sci.*, 28, 1025–1030, 2012.
- Yang, G. S., Ma, R. H., Zhang, L., Jiang, J. H., Yao, S. C., Zhang, M., and Zeng, H. A.: Lake status, major problems and protection strategy in China, *J. Lake Sci.*, 22, 799–810, 2010.
- Yang, L. B., Lei, K., Meng, W., Fu, G., and Yan, W. J.: Temporal and spatial changes in nutrients and chlorophyll *a* in a shallow lake, Lake Chaohu, China: an 11-year investigation, *J. Environ. Sci.*, 25, 1117–1123, 2013.
- Yang, Y. H., Zhou, F., Guo, H. C., Sheng, H., Liu, H., Dao, X., and Chen, J. H.: Analysis of spatial and temporal water pollution patterns in Lake Dianchi using multivariate statistical methods, *Environ. Monit. Assess.*, 170, 407–416, 2010.
- 20 Yu, L. Z., Oldfield, F., Wu, Y. S., Zhang, S. F., and Xiao, J. Y.: Paleoenvironmental implications of magnetic measurements on sediment core from Kunming Basin, Southwest China, *J. Paleolimnol.*, 3, 95–111, 1990.
- 25 Yu, Y. J., Guan, J., Ma, Y. W., Yu, S. X., Guo, H. C., and Bao, L. Y.: Aquatic environmental quality variation in Lake Dianchi watershed, *Proced. Environ. Sci.*, 2, 76–81, 2010.
- Zan, F. Y., Huo, S. L., Xi, B. D., Zhang, J. T., Liao, H. Q., Wang, Y., and Yeager, K. M.: A 60-year sedimentary record of natural and anthropogenic impacts on Lake Chenghai, China, *J. Environ. Sci.*, 24, 602–609, 2012.
- 30 Zhang, Y., Gao, X., Zhong, Z. Y., Chen, J., and Peng, B. Z.: Sediment accumulation of Dianchi Lake determined by ^{137}Cs dating, *J. Geogr. Sci.*, 19, 225–238, 2009.

Zhou, F., Liu, Y., and Guo, H. C.: Application of multivariate statistical methods to water quality assessment of the watercourses in northwestern New Territories, Hong Kong, Environ. Monit. Assess., 132, 1–13, 2007.

HESSD

10, 15409–15432, 2013

Temporal and spatial changes of water quality of Dianchi Lake

T. Zhang et al.

Title Page

Abstract

Introduction

Conclusions

References

Tables

Figures



Back

Close

Full Screen / Esc

Printer-friendly Version

Interactive Discussion



Temporal and spatial changes of water quality of Dianchi Lake

T. Zhang et al.

Table 1. Correlation coefficients between the environmental variables in Dianchi Lake (Pearson, 2-tailed).

Variables	Chl <i>a</i>	Water temperature	PH	DO	COD _{Mn}	COD	BOD ₅	NH ₄ ⁺ -N	TP	TN
Chl <i>a</i>	1									
Water temperature	0.093	1								
PH	-0.250 ^a	0.019	1							
DO	-0.408 ^b	0.074	0.645 ^b	1						
COD _{Mn}	0.317 ^b	-0.244 ^a	0.249 ^a	-0.108	1					
COD	-0.165	0.270 ^a	0.451 ^b	0.410 ^b	0.09	1				
BOD ₅	0.563 ^b	0.058	-0.731 ^b	-0.753 ^b	-0.075	-0.624 ^b	1			
NH ₄ ⁺ -N	0.352 ^b	0.123	-0.695 ^b	-0.792 ^b	-0.042	-0.424 ^b	0.819 ^b	1		
TP	0.418 ^b	0.169	-0.658 ^b	-0.745 ^b	-0.045	-0.365 ^b	0.787 ^b	0.968 ^b	1	
TN	0.410 ^b	0.061	-0.762 ^b	-0.823 ^b	-0.036	-0.494 ^b	0.878 ^b	0.983 ^b	0.947 ^b	1

^a Correlation is significant at the 0.05 level (2-tailed).

^b Correlation is significant at the 0.01 level (2-tailed).

Title Page

Abstract

Introduction

Conclusions

References

Tables

Figures

⏪

⏩

◀

▶

Back

Close

Full Screen / Esc

Printer-friendly Version

Interactive Discussion



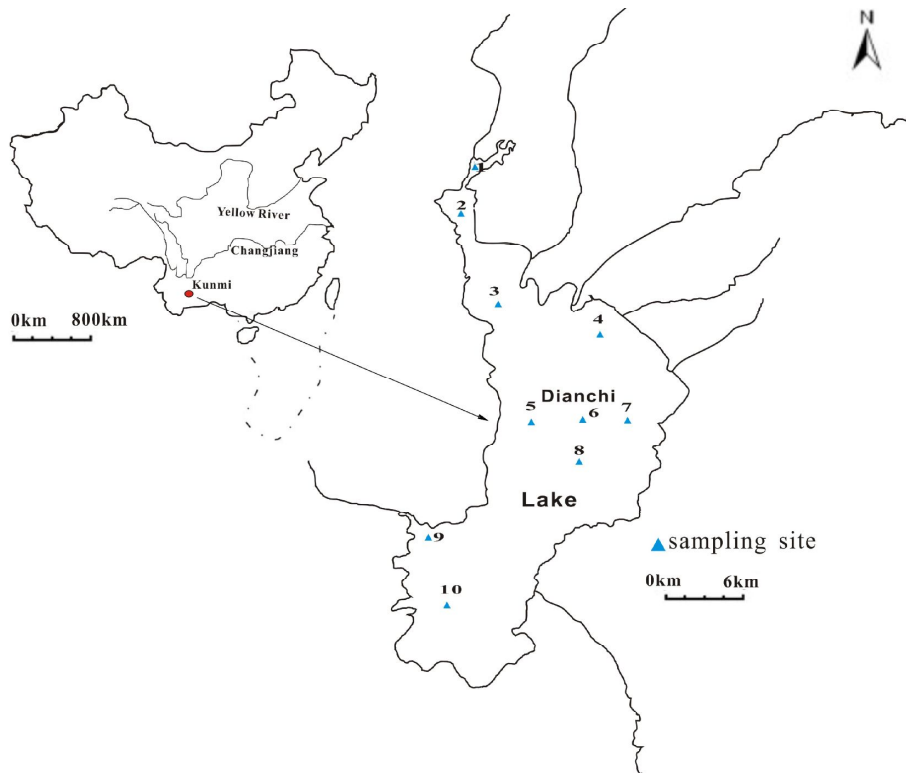


Fig. 1. A map showing the location of the study area and the sampling sites.

Temporal and spatial changes of water quality of Dianchi Lake

T. Zhang et al.

Title Page

Abstract

Introduction

Conclusions

References

Tables

Figures

⏪

⏩

◀

▶

Back

Close

Full Screen / Esc

Printer-friendly Version

Interactive Discussion



Temporal and spatial changes of water quality of Dianchi Lake

T. Zhang et al.

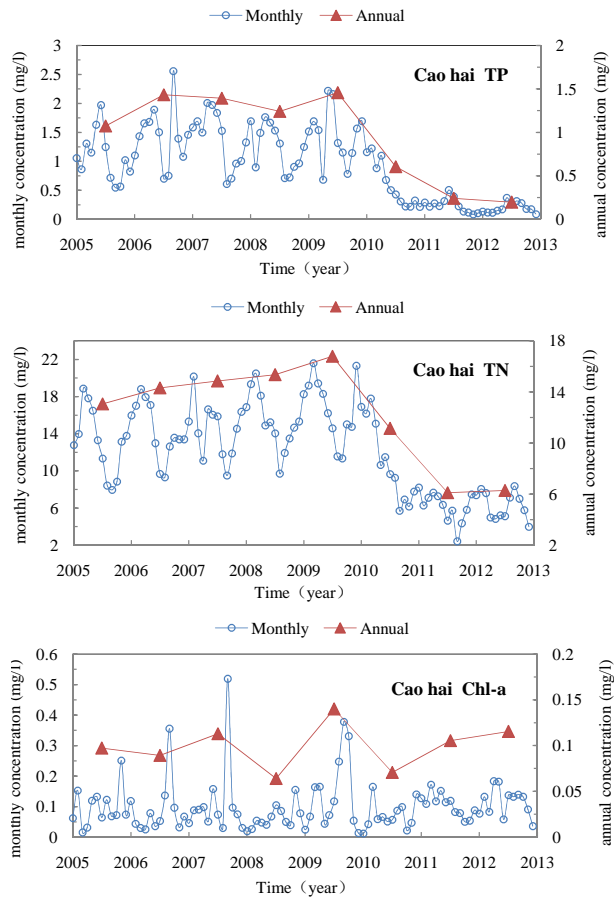


Fig. 2. Temporal changes of TP, TN, and Chl *a* in Caohai Lake.

Temporal and spatial changes of water quality of Dianchi Lake

T. Zhang et al.

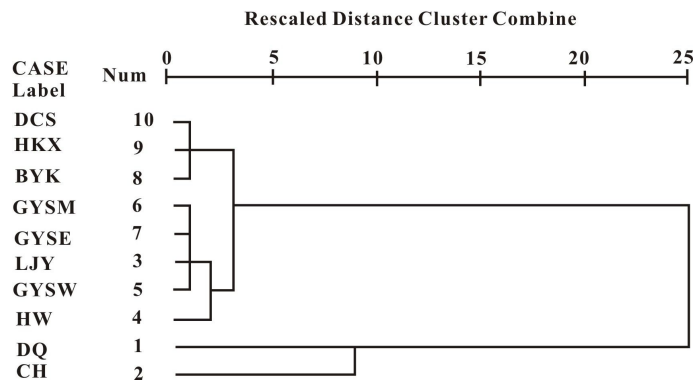


Fig. 4. Dendrogram showing sampling site clusters on Dianchi Lake.

Title Page

Abstract

Introduction

Conclusions

References

Tables

Figures

◀

▶

◀

▶

Back

Close

Full Screen / Esc

Printer-friendly Version

Interactive Discussion