

1 Accounting for environmental flow requirements in global
2 water assessments

3
4 Pastor A.V.^{a*}, Ludwig F.^a, Biemans H.^b, Hoff H.^{cd}, Kabat P.^{ae}

5 ^a Wageningen University, Earth System Science, Droevendaalsesteeg 3, 6708 PB, Wageningen, The
6 Netherlands

7 ^b Climate Change and Adaptive Land and Water Management Group, Alterra, Wageningen UR, P.O.
8 box 47, 6700 AA Wageningen, The Netherlands.

9 ^c Potsdam Institute for Climate Impact Research, Telegraphenberg, 14473 Potsdam, Germany

10 ^d Stockholm Environment Institute, Kräftriket 2b, 10691 Stockholm, Sweden

11 ^e International Institute for Applied Systems Analysis (IIASA), Laxenburg, Austria

12 * Corresponding author; amandine.pastor@wur.nl

13

1

2 **Abstract**

3 As the requirement for water for food production and other human needs is growing, quantification of
4 Environmental Flow Requirements (EFRs)¹ is necessary to assess the amount of water needed to
5 sustain freshwater ecosystems. In this study, five environmental flow (EF)² methods for calculating
6 EFRs were compared with 11 case studies of locally assessed EFRs. We used three existing methods
7 (Smakhtin, Tennant, and Tessmann) and two newly developed methods (the Variable Monthly Flow
8 method (VMF) and the $Q_{90_}Q_{50}$ method). All methods were compared globally and validated at local
9 scales while mimicking the natural flow regime. The VMF and the Tessmann methods use algorithms
10 to classify the flow regime into high, intermediate, and low-flow months and they take into account
11 intra-annual variability by allocating EFRs with a percentage of mean monthly flow (MMF). The
12 $Q_{90_}Q_{50}$ method allocates annual flow quantiles (Q_{50} and Q_{90}) depending on the flow season. The
13 results showed that, on average, 37% of annual discharge was required to sustain environmental flow
14 requirement. More water is needed for environmental flows during low-flow periods (46–71% of
15 average low-flows) compared to high-flow periods (17–45% of average high-flows). Environmental
16 flow requirements estimates from the Tennant, $Q_{90_}Q_{50}$, and Smakhtin methods were higher than the
17 locally calculated EFRs for river systems with relatively stable flows and were lower than the locally
18 calculated EFRs for rivers with variable flows. The VMF and Tessmann methods showed the highest
19 correlation with the locally calculated EFRs ($R^2=0.91$). The main difference between the Tessmann
20 and VMF methods is that the Tessmann method allocates all water to EFRs in low-flow periods while
21 the VMF method allocates 60% of the flow in low-flow periods. Thus, other water sectors such as
22 irrigation can withdraw up to 40% of the flow during the low-flow season and freshwater ecosystems
23 can still be kept in reasonable ecological condition. The global applicability of the five methods was
24 tested using the global vegetation and hydrological model LPJml. The calculated global annual EFRs
25 for fair ecological conditions represent between 25 and 46% of mean annual flow (MAF). Variable
26 flow regimes such as the Nile have lower EFRs (ranging from 12 to 48% of MAF) than stable tropical
27 regimes such as the Amazon (which has EFRs ranging from 30 to 67% of MAF).

28

¹ EFRs and EF are used for different purposes: environmental flow requirements (EFRs) are the result of the quantification of water necessary to sustain riverine ecosystem, which is calculated by the mean of an environmental flow (EF) method.

² An environmental flow (EF) method allows EFRs to be calculated.

1
2
3
4
5
6
7
8
9
10
11
12
13
14
15
16
17
18
19
20
21
22
23
24
25
26
27
28
29
30
31
32
33
34
35

1 Introduction

One of the main challenges of the 21st century is to manage water and other natural resources so that human needs can be satisfied without harming the environment. By 2050 agricultural production is projected to increase by 70% compared to 2000 so that enough food can be provided for 9 billion people (Alexandratos and Bruinsma, 2012). This future increase in food production will result in an increase in water demand (Biemans et al., 2011). As a result, about 60% of the world’s population could face surface water shortages from lakes, rivers, and reservoirs (Rockström et al. (2009).

Today, 65% of global rivers are considered as being under moderate-to-high threat in terms of human water security and biodiversity (Vorosmarty et al., 2010). Since the beginning of the 20th century, more than 800,000 dams have been built to facilitate increased withdrawals, and currently 75% of the main rivers are fragmented (Biemans et al., 2011;Richter et al., 2003). Some large river basins, like the Yellow River Basin, have seen their flow reduced by almost 75% over 30 years due to increasing water withdrawals (Changming and Shifeng, 2002). Moreover, in many rivers, flows are not enough to sustain the deltas. This is the case in, for example, the Colorado and the Nile (Gleick, 2003). In other river basins such as the Amazon or Mekong, flow deviation and dam construction are planned with consequent losses in fish biomass and to the detriment of biodiversity (Ziv et al., 2012).

River flow is the main driver involved in maintaining a river’s good ecological status (Poff et al., 2009). Human activities have impaired freshwater ecosystems through excess water withdrawal, river pollution, land use change (including deforestation), and overfishing (Dudgeon, 2000). Stressors associated with reduction in flow and water quality are the most obvious causes of biodiversity hazard as they directly degrade aquatic ecosystems (Vorosmarty et al., 2010;O’Keeffe, 2009;Pettit et al., 2001;Doupé and Pettit, 2002). Between 1970 and 2000 freshwater ecosystem species declined by 36% (Loh et al., 2010). With increasing future demand for water for agriculture, industry, and human consumption, freshwater ecosystems will be under great pressure in the coming decades. Climate change is also expected to affect river discharge and river ecosystems, with decreased low-flows and rising river temperatures being predicted (Vliet et al., 2013).

Over the last ten years, global hydrological models (GHMs) have been used to evaluate global water assessments (GWAs) (Arnell, 2004;Alcamo et al., 2007;Rockström et al., 2009;van Beek et al., 2011;Hoff et al., 2010;Hanasaki et al., 2008). Global water assessments have highlighted regions with current and future water scarcity. However, most of these studies have neglected the water required by the environment, also known as environmental flow requirements (EFRs), with only a few studies attempting to include some aspects of environmental flows (Hoekstra and Mekonnen, 2011;Smakhtin et al., 2004;Hanasaki et al., 2008;Gleeson et al., 2012).

1 According to the Brisbane Declaration (2007), “environmental flows describe the quantity,
2 quality and timing of water flows required to sustain freshwater and estuarine ecosystems and the
3 human livelihoods and well-being that depend on these ecosystems.” Environmental flows can also be
4 defined as the flows to be maintained in rivers through management of the magnitude, frequency,
5 duration, timing, and rate of change of flow events (O’Keeffe, 2009). Environmental flow (EF)
6 methods should take into account the natural variability of river flow by allocating different flow
7 components in order to maintain and/or restore freshwater ecosystems (Acreman et al., 2008) and
8 riparian vegetation (Bunn and Arthington, 2002;O’Keeffe and Quesne, 2009;Kingsford and Auld,
9 2005;Pettit et al., 2001;Bejarano et al., 2011). For example, sustaining a minimum flow is usually
10 important to guarantee the survival of aquatic species, while flood flows are usually crucial for
11 sediment recruitments and for the maintenance of wetlands and floodplains (Hugues and Rood,
12 2003;Bunn and Arthington, 2002;Acreman et al., 2008;Bigas, 2012). Disrupting a stable flow regime
13 can also impair aquatic ecosystems and favor proliferation of invasive species and more generalist fish
14 species (O’Keeffe, 2009;Marchetti and Moyle, 2001;Poff et al., 2009).

15 There have been major efforts to define EFRs based on eco-hydrological relationships in
16 individual rivers (Richter et al., 2006) but there has been limited upscaling of individual methods to
17 global or regional scales. In general, eco-hydrological relationships are far from being linear at local
18 scales. Therefore, defining eco-hydrological relationships at global scale is even more challenging. In
19 a recent study, a world database on fish biodiversity has been developed (Oberdorff et al., 2011) and in
20 other studies, some efforts are shown in relating global eco-hydrological responses to flow alteration
21 (Xenopoulos et al., 2005;Iwasaki et al., 2012;Yoshikawa et al., 2013). However, it is still difficult to
22 correlate freshwater biodiversity with flow metrics at both local and global scale (Poff and
23 Zimmerman, 2010).

24 In current global water assessments, EFRs are almost always neglected or included in a very
25 simplified way. Because EFRs are being ignored, the quantity of water available for human
26 consumption globally is probably being overestimated (Gerten et al., 2013). To be able to assess where
27 there will be enough water available to allow a sustainable increase in agricultural production, there
28 must be full acknowledgment that nature itself is a water user and limits must be set to water
29 withdrawals in time and space. In the absence of a global eco-hydrological assessments, we assume
30 that locally calculated EFRs are the best estimates of the ecological needs of a river and that they can
31 be used for validation of global EF methods.

32 The aim of this study is to compare different EF methods and their applicability in GHMs to set
33 limits to water withdrawals. In this paper, we first present an overview of existing EF methods.
34 Secondly, we present the selection and development of five hydrological EF methods that were
35 compared with locally calculated EFRs in 11 case studies. In a final step we present a comparison of
36 the five hydrological EF methods applied to a global hydrological and vegetation model LPJml
37 (Bondeau et al., 2007;Gerten et al., 2004).

2 Review of environmental flow methods

2.1 Locally defined methods

There are currently more than 200 environmental flow methods (Tharme, 2003). EF methods are classified into four types: hydrological methods; hydraulic rating methods; habitat simulation methods; and holistic methods (Table 1). These EF methods were mainly developed at river or basin scale, either in the context of flow restoration projects (Richter et al., 2006) or for assessing the ecological status of rivers at a regional, national, or continental level, as per, for instance, the Water Framework Directive 2000/60/EC (Council, 2000).

2.1.1 Hydrological methods

Hydrological methods are usually based on annual minimum flow thresholds such as $7Q_{10}$, the lowest flow that occurs for seven consecutive days once in ten years (Telis and District, 1992) or Q_{90} , where the flow exceeded 90% of the period of record (NGPRP, 1974). The first step in determining the desired level of ecological condition of a river is often via, for instance, the Tennant method (Tennant, 1976) which defines seven classes ranging from severe degradation (F) to outstanding ecological conditions (A). According to the Tennant classification, a different percentage of the annual flow is allocated during the high-flow and low-flow seasons. The Tessmann method (1980) considers intra-annual variability by allocating percentages of monthly flow to calculate EFRs depending on the different flow seasons (high-, intermediate-, or low-flow months). Richter et al. (1997) divided the Indicators of Hydrological Alteration (IHA) into five groups: magnitude, timing, duration, frequency, and rate of change; they determined some environmental flow components (EFCs), such as the maintenance flow, during dry and normal years (Mathews and Richter, 2007). Alternatively, EFRs can be calculated using a method called the Range of Variability Approach (RVA) which in non-parametric analyses calculates EFRs as a range between the 25th and 75th monthly flow percentile (Armstrong et al., 1999; Babel et al., 2012) or in parametric analyses as a range of mean monthly flow (\pm standard deviation) (Smakhtin et al., 2006; Richter et al., 2012). The advantage of hydrological methods is that they are simple and fast EF methods for use in preliminary assessments or when ecological datasets are not available. They can easily be implemented at local and global scale depending on their level of complexity and the availability of hydrological data.

2.1.2 Hydraulic methods

Hydraulic methods are used at a local scale when river cross-section measurements are available. They can ultimately complement habitat simulation models for calculating the area necessary for fish habitat survival (Gippel and Stewardson, 1998; Espegren, 1998). The inconvenience of this method is that it requires river hydraulic measurements and is specific to each river section.

2.1.3 Habitat simulation methods

Habitat simulation models make use of ecohydrological relationships. They are based on correlations between hydraulic parameters such as flow velocity and certain species of freshwater ecosystems. For example, the Instream Flow Incremental Methodology (IFIM) requires datasets of river discharge,

1 river temperature, and fish species richness (Bovee, 1986;Bovee et al., 1998). The Physical Habitat
2 Simulation Model or PHABSIM (Milhous, 1999) is based on the theory that the quality and quantity
3 of physical habitat are related to the environmental needs of aquatic ecosystems of each life stage
4 (Palau and Alcázar, 2010;Jowett, 1989). The advantage of habitat simulation models is that they take
5 into consideration riverine ecosystems; however, data collection can be costly and time-consuming.
6 Habitat simulation models also need to be recalibrated when they are applied to a different region and
7 are usually species-specific (McManamay et al., 2013).

8 **2.1.4 Holistic methods**

9 Holistic methods are a combination of hydrological, hydraulic, habitat simulation methods, and expert
10 knowledge (Shafroth et al., 2009;Poff et al., 2009). For example, the Building Block Model is a well-
11 documented method for estimating EFRs at local or basin scale (King and Louw, 1998;King and
12 Brown, 2010;Tharme, 2003;Hugues and Rood, 2003). The building block method supports the
13 principle that maintaining certain components of the natural flow is of fundamental importance. The
14 flow blocks encompass low flows and high flows, both of which are defined for normal and dry years.
15 The Desktop Reserve Model (Hughes, 2001) provides estimates of these building blocks for each
16 month of the year. River streams are classified (from A to D) according to their level of flow
17 alteration, and the decision regarding ecological flows will depend on those classes (Kashaigili et al.,
18 2007). The Downstream Response to Imposed Flow Transformations is a model that uses 10
19 ecologically relevant flow categories such as wet and dry seasonal low flows, periodicity of floods,
20 and flow variability via flow duration curves (Arthington et al., 2003). Finally, the Ecological Limits
21 of Hydrologic Alteration (ELOHA) approach includes both a scientific and a social approach. The
22 method uses a hydrological classification of natural flow regime types and calculates the rate of flow
23 alteration between natural and actual conditions. The second part of the method uses ecohydrological
24 relations to determine EFRs, and expert knowledge is included in the final part of the assessment.
25 Holistic methods require time to collect large amounts of data and are difficult to upscale due to the
26 different freshwater ecosystems, flow regime types, water management techniques, and different
27 socio-economic contexts. The strength of holistic methods is that they promote interdisciplinarity
28 where hydrological, geo-morphological, biological, and sociological methods are used to find the best
29 compromise between water demand for freshwater ecosystems and water requirements for
30 anthropogenic purposes (Poff et al., 2009).

31 **2.2 Global environmental flow methods**

32 Global EF methods are defined using hydrological methods (section 2.1.1) because of the lack of
33 global ecohydrological data (Richter et al., 2006;Poff and Zimmerman, 2010). Smakhtin et al. (2004)
34 developed the first EF method for application within global hydrological models. Smakhtin et al.
35 (2004) defined four potential ecological river statuses: pristine, good, fair, and degraded, following the
36 recommendations of the Department of Water Affairs and Forestry (DWAF, 1997). In the study of
37 Smakhtin et al. (2004), a low-flow component is defined for each ecological river status such as Q_{50}

1 for good ecological status, Q_{75} for moderate ecological status, Q_{90} for fair conditions, and NA for
2 degraded river status. Smakhtin et al. (2004) developed a method assuming a fair ecological status of
3 global rivers, and Q_{90} was defined as the base flow requirement. To determine high-flow requirements,
4 the global river discharge was classified according to a river's base flow index, which determines the
5 river flow regime. Hanasaki et al. (2008) developed an EF method considering intra-annual variability
6 based on global monthly river flows. They defined four different river regimes: dry, wet, stable, and
7 variable. For each class, they determined EFRs as a percentage of mean monthly flow (MMF)
8 depending on the flow regime type (from 10 to 40% of MMF). EFRs are also determined with a fair
9 ecological status based on the Tennant method (Hanasaki, personal communication). Hoekstra and
10 Mekonnen (2012) evaluated monthly EFRs by applying the presumptive environmental flow standard
11 defined by Richter et al. (2012). Although Hoekstra et al. (2012) limited water consumption to 20% of
12 total discharge, this did not imply that 80% of the total discharge was unavailable; they show,
13 however, the period of the year in which net water availability fails to meet water demand. In another
14 recent global water assessment, EFRs were defined as the monthly flow quantile Q_{90} in the PCR-
15 GLOBWB model (Gleeson et al., 2012). In this study, locally calculated EFRs were assumed to be the
16 best estimates of EFRs for validating global hydrological methods. We therefore selected five
17 hydrological EF methods and compared them with 11 locally calculated EFRs cases so as to have a
18 simple and reliable global EF method that takes into account intra-annual variability.

19 **3 Methods**

20 **3.1 Selection of case studies**

21 Eleven case studies were selected according to their types of locally defined EF methods, river flow
22 regimes, geo-localizations, and Major Habitat Types (MHTs) (Table 1, Figure 1). Major Habitat Types
23 such as temperate coastal rivers and large river deltas are described in the Freshwater Ecoregions Of
24 the World (FEOW), which classify global rivers into 426 freshwater ecoregions (Abell et al., 2008).
25 We chose this classification because it is more robust than a simple global river classification, which is
26 usually based on climate zones and/or river discharge (Haines et al., 1988; McMahon et al., 2007).
27 MHT classification is based on riverine species biodiversity, endemism, and river fragmentation. The
28 description of the geo-localization of the case studies is described in Table 2 and Figure 1. In our
29 selection of 11 case studies, five sub-groups of MHTs (xeric, temperate, tropical, and polar) were
30 represented by at least two case studies. Five out of six continents were represented by at least one or
31 two case studies. The type of flow regimes of the different case studies varied between stable and
32 variable flow regime. Finally, the choice of case study was restricted to methods focusing on riverine
33 ecosystems, such as habitat simulation, and/or hydrological methods, based on daily flow datasets.

34 **3.2 Hydrological datasets**

35 Hydrological datasets of individual case studies were obtained from the Global Runoff Data Centre
36 (available at <http://grdc.bafg.de>) or from the authors of the case studies (Table 2). Mean monthly flows

1 were calculated with historical datasets of 8–30 years to represent the “natural” or “pristine”
2 ecological conditions of the river. In other cases, such as in the Ipswich River case study and the Hong
3 Kong case study, a 20-year average of simulated natural monthly flow was used (section 3.6).

4 **3.3 Hydrological indexes**

5 The analyses were all computed over a 40-year time period (from 1961 to 2000) to take inter-annual
6 variability into account. The flow regimes of the selected case studies were analyzed using several
7 hydrological indicators and river classification. To compare the case studies, we calculated some
8 hydrological flow indexes such as the base flow index (BFI) and a hydrological variability index
9 (HVI) as follows in Eq. (1) and Eq. (2):

$$10 \quad BFI = \frac{Q_{90}}{MAF} \quad (1)$$

$$11 \quad HVI = \frac{Q_{25} - Q_{75}}{Q_{50}} \quad (2)$$

12 where: Q_{90} – the annual flow which is equaled or exceeded for 90% of the period of record, MAF – the
13 mean annual flow, Q_{25} – the annual flow which is equaled or exceeded for 25% of the period of
14 record, Q_{75} – the flow which is equaled or exceeded for 75% of the period of record, and Q_{50} – the
15 flow which is equaled or exceeded for 50% of the period of record. All our calculations are in $\text{m}^3 \text{s}^{-1}$.
16 Finally, we classified our case studies with their respective number of high-flow (HF), intermediate-
17 flow (IF) and low-flow (LF) months. HF is defined as $MMF \geq 80\%$ of MAF , IF is defined as $MMF \geq$
18 40% of MAF , and $MMF < 80\%$ of MAF , and LF is defined as $MMF < 40\%$ of MAF (Table 3).

19 **3.4 Description of the case studies**

20 The hydrological description of the 11 case studies is shown in Table 3. The first case is the Bill
21 Williams River, located in Arizona, USA, which is classified as the xeric freshwater habitat type and
22 characterized by a long low-flow season (more than 6 months) with a low Base Flow Index
23 ($BFI=5.3\%$). The second case is the Sharh Chai River, which also belongs to the xeric freshwater
24 habitat type. It is characterized by a long period of low-flow (about 6 months) and by a high BFI
25 (21%). Four temperate coastal rivers were then selected: the Ipswich River in the USA, the Silvan
26 River in northwest Spain, the upstream flow of the Osborne River in Zimbabwe, and the Huasco River
27 in Chile (Table 3; Figure 1). These all have relatively stable flow regimes with a strong base flow
28 index ($BFI \geq 20\%$) and a hydrological variability index ($HVI < 1$). Two case studies were selected in the
29 polar freshwater habitat types: the Voijm River in Sweden and the Newhalen River in Alaska, both
30 rivers being characterized by a strong BFI of 51% and 22%, respectively. Finally, three case studies
31 are located in tropical floodplains and coastal habitat types: a stream near Hong Kong in China, the
32 Gna River in Vietnam, and the Great Ruaha River in Zimbabwe. These are all characterized by a
33 monsoon season of 3–4 months with a low BFI (between 5 and 15), with the Great Ruaha River being
34 characterized by the strongest variability index (4.3). As mentioned in section 2, case studies were

1 selected according to whether EFRs were calculated with EF methods using ecological datasets and/or
2 daily flow datasets. Three case studies used EF methods with eco-hydrological relationships such as
3 PHABSIM, RHYHABSIM, and an empirical relationship between macroinvertebrate survival and
4 river flow. One case study (Swedish case) used a holistic approach by including expert knowledge.
5 One case study used a hydraulic method based on the river cross section in order to assess suitable
6 habitat area for fish habitat (R2 cross method). In five case studies, hydrological methods were used to
7 determine EFRs at local scale. Those methods were developed and validated with statistical analyses
8 of daily flow datasets (e.g., GEFC, Hugues method, Tennant, Desktop reserve model).

9 **3.5 Selection of global environmental flow methods**

10 In the absence of global eco-hydrological relationships, we assumed that locally calculated EFRs were
11 the best estimates for determining EFRs and were thus used for validation of global hydrological EF
12 methods. In this study, we selected three existing hydrological EF methods and developed two new
13 hydrological EF methods that were first compared with the locally calculated EFRs and then
14 implemented in a GHM. The aim was to select and design methods that could be easily implementable
15 in global hydrological models. We excluded EF methods that use daily flows as inputs (e.g., the
16 Hanasaki method) because GHMs are mainly validated on a monthly or annual time scale (Döll et al.,
17 2003; Werth and Güntner, 2010; Portmann et al., 2010; Pokhrel et al., 2011; Biemans et al., 2011). The
18 three selected existing EF methods were the Tennant, Smakhtin, and Tessmann methods. The
19 algorithms of the Smakhtin and Tennant methods were adjusted from annual to monthly time-step in
20 order to compare EFRs with monthly irrigation requirements in future water assessments. We
21 therefore divided the river hydrograph into low-/high-flow months and defined EFRs algorithm for
22 each flow season (high-flow or low-flow months). For example, in the Smakhtin method, low-flow
23 requirements (LFRs) were allocated during low-flow months and high-flow requirements (HFRs) were
24 allocated during high-flow months. By including intra-annual variability in our EF methods, we were
25 improve the representation of EFRs compared with EF methods that give an annual flow threshold.

26 **3.6 Design of new EF methods**

27 Two of the five EF methods were newly developed for the purpose of this study (Table 4). One
28 method is based on annual flow quantiles (the Q_{90} - Q_{50} method) and the other method is based on
29 average monthly flows (the VMF method). We chose to develop a purely non-parametric method
30 (Q_{90} - Q_{50}), which uses flow quantiles to allocate minimum instream flow during the high-flow and
31 low-flow seasons. EFRs are calculated using the allocation of the annual flow quantile (Q_{90}) during the
32 low-flow season; the innovation in this method is that the minimum flow threshold was adapted during
33 the high-flow season by allocating the annual flow quantile (Q_{50}) instead of (Q_{90}), based on the study
34 of Allain and El-Jabi (2002). Flow quantiles were determined based on long-term average monthly
35 flows between 1961 and 2000. We also developed a parametric method: the Variable Monthly Flow
36 (VMF) method. This method follows the natural variability of river discharge by defining EFRs on a

1 monthly basis as in the Tessmann and Hoekstra methods, except that the VMF method adjusts EFRs
2 according to flow season. The VMF method was developed to increase the protection of freshwater
3 ecosystems during the low-flow season with a reserve of 60% of the MMF and a minimum flow of
4 30% of MMF during the high-flow season. The VMF method allows other water users to withdraw
5 water up to 40% of the MMF during the low-flow season. In all the EF methods except the VMF
6 method and the Tessmann methods, the low-flow season was determined when the MMF was below
7 mean annual flow (MAF) and the high-flow season when MMF was above MAF. In two of the five
8 methods, intermediate flows were determined for a smooth transition to be made between high-flow
9 and low-flow months (Table 4).

10 **3.7 Ecological conditions**

11 At global scale, there is no dataset indicating the level of ecological condition of rivers; nor is there a
12 dataset with the desired ecological status of rivers worldwide. The decision on the ecological status of
13 any river is part of an international consensus between water managers, governments, and
14 environmental scientists. The five hydrological methods were defined with various ecological
15 condition levels. For instance, the Smakhtin method was defined with fair ecological status, while
16 other methods such as the Tessmann method did not define the desired ecological status but allocated
17 at least 40% of MMF to the river. VMF was defined to reach fair ecological status with a minimum
18 monthly flow allocation of at least 30% MMF and a higher restriction during low-flow months. We
19 excluded methods that used good ecological conditions, such as Hoekstra et al. (2012) because our
20 aim was to validate an EF method based on locally calculated EFRs with fair-to-good ecological
21 conditions. Finally, our focus was to improve the temporal algorithms of EF methods to restrict other
22 water users at monthly time-steps.

23 **3.8 Validation of EF methods**

24 The performance of the five hydrological methods was tested against the locally calculated EFRs
25 using the efficiency coefficient R^2 from Nash and Sutcliffe (1970). In extremely dry conditions
26 ($MMF < 1m^3 s^{-1}$), there was no environmental flow allocation.

27 **3.9 Description of the global hydrological model LPJml and simulations**

28 The global application and comparison of different EF methods require the simulation of “pristine”
29 river discharge. For that, the Lund-Potsdam-Jena managed land (LPJml) model was used to simulate
30 river flow globally at a spatial resolution of 0.5° by 0.5° on a daily time step. The CRU TS 2.1 global
31 climate data (1901–2002) was used to drive the model. LPJml was initially a dynamic global
32 vegetation model simulating water and carbon balances for natural vegetation (Sitch et al., 2003,
33 Gerten et al., 2004). LPJml is different from other GHMs such as VIC (Liang et al., 1994) and HO8
34 (Hanasaki et al., 2008) in that it has been extended with a crop model (Bondeau et al. 2007, Fader et
35 al., 2010), with a river routine that simulates water withdrawal from rivers and lakes (Rost et al.,
36 2008), and more recently with the integration of a dam and reservoir module (Biemans et al., 2011).

1 Simulations were computed from 1901 to 2001 with a spin-up phase of 1,000 years for carbon and
2 water balance. A simulation was run for naturalized river flow by using exclusively potential natural
3 vegetation (PNV). EFR calculations were always computed with natural flows obtained from
4 historical datasets or from simulated naturalized flow datasets. All the analyses were done on a
5 monthly time step. In order to compare EF methods globally, the ratio of monthly EFRs to natural
6 monthly flow was used to show the intra-annual variability of EFRs in space and time. Calculations
7 are shown on an annual basis and for two months, January and April, averaged from 1961 to 2000. We
8 also compared the annual ratio of EFRs for the natural flow of different river basins by giving a range
9 of annual EFRs for the five hydrological methods.
10

4 Results

4.1 Comparison of global environmental flow requirements per case study

The overall annual average of EFRs across the 11 case studies and five methods represent 37% of MAF (Figure 2; Table 5). The range of EFRs defined locally in the case studies is from 18 to 63% of MAF, while the range of EFRs among the global EF methods is from 9 to 83% of MAF. On average, low-flow requirements represent 46–71% of mean low flows, while high-flow requirements represent 17–45% of high-flows (Table 5). Low-flow requirements are usually higher than high-flow requirements relative to mean annual flow when the low-flow season is longer than four months. The correlation between the EFRs calculated with the five selected methods and the locally calculated EFRs are shown in Figure 3. Among the EF methods used, all the simulated EFRs were highly correlated with the locally calculated EFRs. The Tessmann and VMF methods recorded the highest correlation coefficient ($R^2=0.91$), while the Smakhtin, $Q_{90_Q_{50}}$, and Tennant methods showed a correlation (R^2) of 0.86–0.88.

The results show that while there is no unique method fitting a unique habitat type, two of the five methods (VMF and Tessmann) performed better than the three other methods (Smakhtin, $Q_{90_Q_{50}}$, and Tennant). On average, the Tennant method allocated about 10% less water than the locally calculated EFRs. The Tessmann method was in general higher than the locally calculated EFRs (+24%), especially in polar freshwater ecosystems. The Smakhtin and $Q_{90_Q_{50}}$ methods allocated less water than recommended in xeric freshwater and tropical freshwater ecosystems (variable flow regimes) and allocated more water than recommended in polar freshwater ecosystems (stable flow regime). Finally, the VMF method was the closest to the locally calculated EFRs (about 10% above average). The five methods gave lower EFRs estimates than the locally calculated EFRs in xeric freshwater ecosystems and higher estimates of EFRs than locally calculated EFRs in polar freshwater ecosystems. The methods that were closer to the locally calculated EFRs for xeric freshwater ecosystems were Tessmann and the VMF methods, and for polar freshwater ecosystems, the Tennant method. For temperate coastal rivers, the method closest to the locally calculated flow was the VMF method (Figure 2; Table 5).

EFRs of variable rivers accounted for more than 60% of the total annual flow during the high-flow season. For example, in the case of the Bill William river and the Iranian case studies, about 80% of the river flow occurs during the high-flow season which lasts three to five months. In the Tanzanian case, the high-flow season lasts five months during which 90% of the total flow occurs and about 80% of EFRs are allocated. The Tessmann, VMF, and $Q_{90_Q_{50}}$ methods were in line with the locally calculated EFRs of variable rivers, but only the VMF and Tessmann methods could capture the intra-annual variability and allocated peak flows during the high-flow season (Figure 2; Table 5).

In perennial rivers, such as the Chilean case study, about 40% of the total flow occurs during the three wettest months of the year with the allocation of more than 50% of EFRs. The Tessmann,

1 Tennant, and VMF methods were in line with the locally calculated EFRs, while the Smakhtin and the
2 $Q_{90_Q_{50}}$ methods allocated more water than recommended. In the Odzi River in Zimbabwe, only
3 Tessmann and $Q_{90_Q_{50}}$ could allocate an amount of water close to the locally calculated EFRs. In the
4 Voijm River in Sweden, all the EF methods used were in line with the locally calculated EFRs with
5 the exception of the timing of the peak flow, which was calculated as being two months later with the
6 locally calculated EFRs.

7 **4.2 Comparison of environmental flow methods globally**

8 Among the methods, EFRs ranged from 25– 46% of MAF, with an increasing percentage of EFRs
9 from the Smakhtin method to the $Q_{90_Q_{50}}$ method. On a monthly basis, the VMF, Tennant, and
10 Tessmann methods produced similar spatial distribution of EFRs. Similarly, the Smakhtin and $Q_{90_Q_{50}}$
11 methods showed analogous spatial allocation of EFRs such as a high water allocation in perennial
12 rivers, and a low to no-flow allocation in variable rivers. The Smakhtin method allocated 100% of
13 MMF in the regions of the Arctic North Pole, between 40% and 60% of MMF in the tropics, and
14 between 0 and 40% of the MMF in the rest of the world. The VMF, Tennant, and Tessmann methods
15 allocated from at least 20 to 40% of MMF in arid regions and more than 50% of the MMF during the
16 low-flow season. The Tennant method calculated high EFRs in the tropics ($EFRs \geq 100\%$ of MMF).
17 However, the Tennant method calculated lower EFRs than the rest of the methods in temperate zones,
18 especially during the high-flow period. In the temperate zones, the Tennant method allocated about
19 20% of MMF, while the VMF and Tessmann methods allocated at least 40% of MMF. A comparison
20 of Figure 4 with Figures 5 and 6, shows that EFRs are more homogenous on an annual time-step
21 compared to a monthly time-step because monthly EFRs are averaged-out. For example, the Tessmann
22 method allocated an equal percentage of MAF worldwide and did not show strong differences between
23 regions (Figure 4), whereas, on a monthly basis, the Tessmann method showed clear spatial
24 differences in flow allocation (Figure 5 and 6).

25 Using a combination of the five EF methods can give a range of uncertainties of EFRs in the
26 absence of any locally calculated EFRs. For example, we present a range of EFRs calculated with the
27 five hydrological EF methods at the outlet of 14 of the biggest river basins. The results show that
28 perennial rivers such as the Congo, Amazon, Rhine, and Mississippi required 30–80% of MAF (Figure
29 7). More variable river basins such as the Ganges or the Nile required 10–50% of MAF depending on
30 the five EF methods. On average, $Q_{90_Q_{50}}$ resulted in the highest EFRs (48% of MAF) and the
31 Smakhtin method resulted in the lowest EFRs (26% of MAF). The VMF method allocated on average
32 33% of MAF, which is higher than the Tennant method (30% of MAF) and lower than the Tessmann
33 method (43% of MAF).

5 Discussion

5.1 Improving global environmental flow assessments

This study compared a selection of hydrological EF methods with locally calculated EFRs while accounting for intra-annual variability. Five hydrological methods were tested using a set of local case studies to identify methods that could be used in future global water assessments. The inclusion of intra-annual variability in the algorithm of EF methods presents a significant improvement over previous global water assessments based on an annual scale (Smakhtin et al., 2004; Vorosmarty et al., 2010). The VMF method was developed with the specific aim of being flexible, reliable, and globally applicable. The VMF and Tessmann showed a good correlation with the locally calculated EFRs in different case studies from a wide range of climates, flow regimes, and freshwater ecosystems ($R^2 = 0.91$). Both methods classify flow regime into high, intermediate, and low-flow seasons and allocate monthly EFRs with different percentages of the MMF or MAF. Those two methods show some temporal and spatial improvements in the calculation of EFRs, especially for the variable flow regimes, compared with methods using annual flow thresholds such as low-flow indices (Q_{90} or $7Q_{10}$) or percentages of MAF (Palau, 2006). The advantage of the VMF and the Tessmann methods is that they mimic the natural flow as suggested by Poff et al. (2009). In the case of the VMF method, the allocation of 30–60% of mean monthly flow as a degradation limit was selected because the purpose of this study was to allocate water for freshwater ecosystems in fair ecological conditions similar to Smakhtin et al. (2004), and an allocation of 30% of MAF to calculated EFRs was widely recognized (Hanasaki et al., 2008).

5.2 Differentiation between Tessmann and VMF methods

The main difference between the VMF and Tessmann methods is that they define high-flow, intermediate-flow, and low-flow seasons with different algorithms (Table 4). They allocate 60% and 100%, respectively, of MMF during the low-flow season. The relative amount of EFRs during the low-flow period is high because we considered the habitat area for freshwater ecosystems to be smaller during the low-flow season compared to the high-flow season, and we also wished to prevent the eventual impact of seasonal droughts on freshwater ecosystems (Bond et al., 2008). Saving water for the environment is thus more important during the low-flow season in order to reduce the pressure on fish survival. This assumption is confirmed in the study of Palau and Alcázar (2010) where our calculated LFRs were close to the requirements of fish habitat survival. On the other hand, water users such as industry and the irrigation sector can still withdraw up to 40% of MMF during the low-flow season (which is usually the season with the highest water demand from the irrigation sector). However, with the Tessmann method, water withdrawals are not possible during the low-flow season. During the high-flow season, allocation of HFRs does not differ significantly between the VMF and Tessmann methods because the VMF method allocates 30% of MMF and the Tessmann method allocates 40% of MMF. The determined threshold levels of the VMF method can easily be adjusted

1 depending on the objectives of the water policy (e.g., a stricter policy on riverine ecosystems may
2 require higher EFRs thresholds), on the ecological status of a river basin (e.g., a very altered river may
3 never achieve the actual thresholds of VMF), and on the specific demands of other water users.

4 **5.3 Limitations of environmental flow methods based on annual** 5 **thresholds**

6 We found that EFRs calculated with methods based on annual thresholds (Tennant, Smakhtin, and
7 Q_{90} - Q_{50}) were lower during low-flow season and higher during high-flow season than the locally
8 calculated EFRs, even if intra-annual adjustment was included (allocation of low and high flow
9 requirements). Using annual flow quantiles to calculate EFRs is not appropriate for certain types of
10 flow regime. For example, using the Q_{90} - Q_{50} or the Smakhtin method, the calculated EFRs were
11 always lower than the locally defined EFRs of variable rivers (Figure 2). The Tennant method did not
12 perform well in tropical case studies because this method was developed for temperate rivers and thus
13 needs to be calibrated for other river types. The flow quantile methods, such as the Smakhtin and
14 Q_{90} - Q_{50} methods, showed that in perennial rivers, as in the Chilean case, there was a higher allocation
15 of EFRs compared to other methods (Figures 1, 3, 4, and 5). In variable rivers, the Q_{90} - Q_{50} , the
16 Smakhtin and Tennant methods showed a lower allocation of EFRs during the high-flow season and a
17 higher allocation of EFRs during the low-flow season compared to the locally calculated EFRs (Table
18 5). Similarly, those methods did not seem appropriate for ephemeral and intermittent rivers because
19 they would be flooded during the dry season, which can increase the risk of invasion of exotic species
20 (O'Keeffe, 2009). Furthermore, Botter et al. (2013) agreed with the fact that allocating fixed minimum
21 flows to erratic flow regimes was not appropriate; this is because those flow regimes have a high-flow
22 variability and allocating a fixed minimum flow would be disproportionate to the incoming flows
23 during the low-flow season. Furthermore, flow quantile methods are not flexible enough to be used in
24 global assessments because the allocation of higher flow quantiles than Q_{90} such as Q_{75} and Q_{50} , as
25 suggested in Smakhtin et al. (2004), would allocate a flow exceeding the average monthly flow (data
26 not shown).

27 **5.4 Limitations of our study**

28 The choice of EF methods for our study was limited to hydrological methods because of a lack of data
29 on ecosystem responses to flow alterations for most river basins of the world. This lack of
30 ecohydrological data makes it difficult to determine minimum environmental flow thresholds and
31 tipping points of different freshwater ecosystem across the world. An improved consistent
32 ecohydrological monitoring and forecasting system is required so that a global river classification
33 system can be developed that would account for the sensitivity of the respective aquatic ecosystems to
34 flow modifications (Barnosky et al., 2012). To go beyond previous individual unrelated case studies
35 we consistently applied different EF methods across a set of existing case studies located in different
36 climates and freshwater ecosystems regions. Among the 200 existing EF methods, it is difficult to find
37 case studies that quantify the sensitivity of freshwater ecosystems to change in discharge (Poff and

1 Zimmerman, 2010). It would be a great improvement if the number of case studies could be increased
2 so that the level of validation could be increased and more accurate algorithms for each ecoregion
3 could be found. For example, a higher allocation of flow might be required in perennial tropical rivers
4 due to their high biodiversity index (Oberdorff et al., 2011) and due to their lower hydrological
5 resilience to climate fluctuation compared to rivers with more variable flow regimes (Botter et al.,
6 2013). We are aware of the heterogeneity of the case studies in terms of inter-annual variability and
7 for that reason we chose case studies with a minimum of 15 years of hydrological data, which is
8 sufficient to capture inter-annual variability, according to Kennard et al. (2010). However, none of the
9 EF methods used in this study explicitly accounted for daily high and low flood pulses, which often
10 drive riparian vegetation (Shafroth et al., 2009).

11 **5.5 Social aspects of environmental flow requirements**

12 Environmental flow requirements are, in the end, a societal decision which is often made at local
13 scales, and quantification of EFRs depends on the level of protection that is desired by society/policy.
14 However, to develop a global EF method we need a quantification method that can be used in global
15 water hydrological models. We decided to develop a method that reflects a level of ecosystems
16 described as “fair ecological conditions,” as in Smakhtin et al. (2004). Including social and political
17 decisions in quantitative assessment is very difficult and beyond the aim of this paper. At the moment,
18 we cannot possibly address this full new research agenda, and we have limited ourselves to the
19 quantification of EFRs as a function of biophysical parameters. However, we acknowledge that there
20 is a need for a more systematic EF method that would link the natural and social science fronts and
21 would create a unifying framework for the assessment and implementation of sustainable EFRs in
22 national water policy (Pahl-Wostl et al., 2013). Additional efforts are required to develop a systematic
23 regional environmental flow framework based on multi-disciplinary methods (Poff et al., 2009;Pahl-
24 Wostl et al., 2013). Addressing EFRs, which is part of a proactive management of river basins, is
25 certainly a less costly solution than using reactive solutions such as river restoration measures (Palmer
26 et al., 2008).

27 **5.6 Refining global water assessments**

28 This study aimed not to refine locally determined EF methods but to identify one or several methods
29 for global application. These new estimates of EFRs will improve global water availability
30 assessments and allow them to better inform other water users. Moreover, expansion of irrigated lands
31 can be carried out in a more sustainable way by accounting for current and future water availability
32 constrained by EFRs. The VMF method estimated that at least 40% of global annual flow should be
33 reserved for environmental flows to keep ecosystems in a fair ecological condition, but that does not
34 necessarily mean that the remaining 60% of the water should be used by other users. It is important to
35 acknowledge that this is a global annual average and that EFRs are highly variable depending on the
36 region and the flow season. Finally, there is no EFR benchmark at a river basin scale. That is why we

1 show in Figure 7 a range of annual EFRs at a river basin scale by using a range of the five
2 hydrological EF methods. This approach can guide policy-makers who have to decide for EFRs values
3 in different river basins where ecological and hydrological data are poor and it could be a starting
4 point to implement EFRs at river basin level with “fair” ecological conditions.

5 **5.7 To be considered in future EF assessments**

6 In future global EF assessments, it will be important to consider the inter-annual variability of flow
7 regimes because EFRs are usually calculated on a long period average (> 20 years) and they might
8 need to be refined for dry years (Hessari et al. (2012). Regarding the use of ecological datasets, it is
9 worth considering the delay in ecosystem response related to flow events when calculating EFRs (Sun
10 et al., 2008).

11

1
2
3
4
5
6
7
8
9
10
11
12
13
14
15
16
17
18
19
20
21
22
23
24

6 Conclusion

We tested five different hydrological environmental flow methods for their applicability in global water assessments and found the VMF and Tessmann methods to be valid and easy methods for implementation in global hydrological models. Both methods use a simple algorithm and also take into account intra-annual variability. They improve environmental flow calculations due to their increased time resolution from an annual to monthly basis and the global applicability that this provides. The VMF and Tessmann methods were validated with existing EFR calculations from local case studies and showed good correlations with locally calculated EFRs. Quantile methods such as Smakhtin, Q_{90} - Q_{50} , and Tennant showed some disadvantages in variable flow regimes such as a lower allocation of flow than with locally calculated EFRs and flooding of the river during the dry season. The VMF and Tessmann methods fit many different flow regimes thanks to their algorithm determining low, intermediate, and high-flows; its use in future global water assessment is recommended, especially in the case of variable flow regimes. This validation increases our confidence in using this method in global water assessments. However, EFRs are likely to be adjusted if society wishes to implement a different ecological status for the river. For example, a higher flow allocation might be desired if excellent ecological conditions are required. For that eventuality, we create algorithms that are easily adjusted to societal needs. In the absence of any local calculation of EFRs, using the five hydrological methods can also provide a range of calculated EFRs at global and river basin scale in “fair” ecological conditions. Including EFRs in future global water assessments will improve the estimates of global water boundaries and will enable sustainable scenarios to be produced on the expansion of irrigated land and on the use of water for other users such as the hydropower sector.

1

2 **7 Acknowledgments**

3 We thank the following individuals who contributed to this study for their comments and for sharing
4 data resources: Knut Alfredsen, David S Armstrong, Jorge Alcazar, Patrick B Shafroth, Naota
5 Hanasaki, and Dolores Bejarano. Funding for this study has been provided by the NWO (Netherlands
6 Organization for Scientific Research) within the program: “Planetaire grenzen zoetwatercyclus”.

7

1

2 8 Literature

- 3 Abell, R., Thieme, M. L., Revenga, C., Bryer, M., Kottelat, M., Bogutskaya, N., Coad, B., Mandrak, N., Balderas,
4 S. C., and Bussing, W.: Freshwater ecoregions of the world: A new map of biogeographic units for freshwater
5 biodiversity conservation, *Bioscience*, 58, 403-414, 2008.
- 6 Acreman, M., Dunbar, M., Hannaford, J., Mountford, O., Wood, P., Holmes, N., Cowx, I., Noble, R., Extence, C.,
7 and Aldrick, J.: Developing environmental standards for abstractions from uk rivers to implement the eu water
8 framework directive/développement de standards environnementaux sur les prélèvements d'eau en rivière au
9 royaume uni pour la mise en œuvre de la directive cadre sur l'eau de l'union européenne, *Hydrological Sciences*
10 *Journal*, 53, 1105-1120, 2008.
- 11 Alcamo, J., Flörke, M., and Märker, M.: Future long-term changes in global water resources driven by socio-
12 economic and climatic changes, *Hydrological Sciences Journal*, 52, 247-275, 2007.
- 13 Alexandratos, N., and Bruinsma, J.: World agriculture towards 2030/2050: The 2012 revision, ESA Working
14 paper, 2012.
- 15 Allain, M., and El-Jabi, N.: Hydrological approach to instream flow evaluation: A sensitivity analysis, Annual
16 Conference of the Canadian Society for Civil Engineering, Montréal, Québec, Canada, 2002.
- 17 Armstrong, D. S., Todd, A., and Parker, G. W.: Assessment of habitat, fish communities, and streamflow
18 requirements for habitat protection, Ipswich river, Massachusetts, 1998-99, Issue 1, Dept. of the Interior, U.S.
19 Geological Survey, 2001 1999.
- 20 Arnell, N. W.: Climate change and global water resources: Sres emissions and socio-economic scenarios, *Global*
21 *Environmental Change*, 14, 31-52, doi:10.1016/j.gloenvcha.2003.10.006, 2004.
- 22 Arthington, A. H., Rall, J. L., Kennard, M. J., and Pusey, B. J.: Environmental flow requirements of fish in
23 lesotho rivers using the drift methodology, *River Research and Applications*, 19, 641-666, 2003.
- 24 Arthington, A. H., Bunn, S. E., Poff, N. L., and Naiman, R. J.: The challenge of providing environmental flow
25 rules to sustain river ecosystems, *Ecological Applications*, 16, 1311-1318, doi:10.1890/1051-0761, 2006.
- 26 Babel, M. S., Dinh, C. N., Mullick, M. R. A., and Nanduri, U. V.: Operation of a hydropower system considering
27 environmental flow requirements: A case study in la nga river basin, vietnam, *Journal of Hydro-Environment*
28 *Research*, 6, 63-73, doi:10.1016/j.jher.2011.05.006, 2012.
- 29 Barnosky, A. D., Hadly, E. A., Bascompte, J., Berlow, E. L., Brown, J. H., Fortelius, M., Getz, W. M., Harte, J.,
30 Hastings, A., and Marquet, P. A.: Approaching a state shift in earth/'s biosphere, *Nature*, 486, 52-58, 2012.
- 31 Bejarano, D. M., Nilsson, C., Del tanago, G. M., and Marchamalo, M.: Responses of riparian trees and shrubs to
32 flow regulation along a boreal stream in northern sweden, *Freshw Biol*, 56, 853-866, 2011.
- 33 Biemans, H., Haddeland, I., Kabat, P., Ludwig, F., Hutjes, R., Heinke, J., von Bloh, W., and Gerten, D.: Impact
34 of reservoirs on river discharge and irrigation water supply during the 20th century, *Water Resources Research*,
35 47, W03509, 2011.
- 36 Bigas, H. E.: *The global water crisis: Addressing an urgent security issue*, UNU-INWEH, Hamilton, Canada,
37 2012.
- 38 Bond, N. R., Lake, P., and Arthington, A. H.: The impacts of drought on freshwater ecosystems: An australian
39 perspective, *Hydrobiologia*, 600, 3-16, 2008.
- 40 Bondeau, A., Smith, P. C., Zaehle, S., Schaphoff, S., Lucht, W., Cramer, W., Gerten, D., Lotze Campen, H.,
41 Müller, C., and Reichstein, M.: Modelling the role of agriculture for the 20th century global terrestrial carbon
42 balance, *Global Change Biology*, 13, 679-706, 2007.
- 43 Botter, G., Basso, S., Rodriguez-Iturbe, I., and Rinaldo, A.: Resilience of river flow regimes, *Proceedings of the*
44 *National Academy of Sciences*, 110, 12925-12930, 2013.
- 45 Bovee, K. D.: Development and evaluation of habitat suitability criteria for use in the instream flow incremental
46 methodology, National Ecology Center, Division of Wildlife and Contaminant Research, Fish and Wildlife Service,
47 US Department of the Interior, 1986.
- 48 Bovee, K. D., Lamb, B. L., Bartholow, J. M., Stalnaker, C. B., and Taylor, J.: Stream habitat analysis using the
49 instream flow incremental methodology, U.S. Geological Survey-BDR, Fort Collins, CO, USA, 130 p., 1998.
- 50 Bunn, S. E., and Arthington, A. H.: Basic principles and ecological consequences of altered flow regimes for
51 aquatic biodiversity, *Environmental Management*, 30, 492-507, doi:0.1007/s00267-002-2737-0, 2002.
- 52 Capra, H., Sabaton, C., Gouraud, V., Souchon, Y., and Lim, P.: A population dynamics model and habitat
53 simulation as a tool to predict brown trout demography in natural and bypassed stream reaches, *River Research*
54 *and Applications*, 19, 551-568, doi:10.1002/Rra.729, 2003.
- 55 Changming, L., and Shifeng, Z.: Drying up of the yellow river: Its impacts and counter-measures, 7, 203-214,
56 doi:10.1023/a:1024408310869, 2002.
- 57 Council, E. P.: Directive of the european parliament and of the council 2000/60/ec establishing a framework for
58 community action in the field of water policy, European Commission PE-CONS, 3639, 100, 2000.
- 59 Declaration, T. B.: The brisbane declaration: Environmental flows are essential for freshwater ecosystem health
60 and human well-being, Declaration of the 10th International River Symposium, 3-6 September 2007, Brisbane,
61 Australia, 2007.
- 62 Döll, P., Kaspar, F., and Lehner, B.: A global hydrological model for deriving water availability indicators: Model
63 tuning and validation, *Journal of Hydrology*, 270, 105-134, doi:10.1016/S0022-1694(02)00283-4, 2003.
- 64 Doupe, R., and Pettit, N.: Ecological perspectives on regulation and water allocation for the ord river, western
65 australia, *River Research and Applications*, 18, 307-320, 2002.
- 66 Dudgeon, D.: Large-scale hydrological changes in tropical asia: Prospects for riverine biodiversity, *Bioscience*,
67 50, 793-806, 2000.
- 68 DWAF: White paper on a national water policy for south africa, Department of Water Affairs and Forestry,
69 Pretoria, South Africa, 1997.

1 Espegren, G. D.: Evaluation of the standards and methods used for quantifying instream flows in colorado,
2 Colorado Water Conservation Board, Denver, CO, USA, 1998.

3 Estes, C. C.: Annual summary of instream flow reservations and protection in alaska, Alaska Department of Fish
4 and Game, Division of Sport Fish, Research and Technical Services, 1998.

5 Gerten, D., Schaphoff, S., Haberlandt, U., Lucht, W., and Sitch, S.: Terrestrial vegetation and water balance—
6 hydrological evaluation of a dynamic global vegetation model, *Journal of Hydrology*, 286, 249-270, 2004.

7 Gerten, D., Hoff, H., Rockström, J., Jägermeyr, J., Kumm, M., and Pastor, A. V.: Towards a revised planetary
8 boundary for consumptive freshwater use: Role of environmental flow requirements, *Current Opinion in
9 Environmental Sustainability*, doi:10.1016/j.cosust.2013.11.001, 2013.

10 Gippel, C. J., and Stewardson, M. J.: Use of wetted perimeter in defining minimum environmental flows,
11 *Regulated rivers: research & management*, 14, 53-67, 1998.

12 Gleeson, T., Wada, Y., Bierkens, M. F., and van Beek, L. P.: Water balance of global aquifers revealed by
13 groundwater footprint, *Nature*, 488, 197-200, 2012.

14 Gleick, P. H.: Global freshwater resources: Soft-path solutions for the 21st century, *Science*, 302, 1524-1528,
15 2003.

16 Haines, A., Finlayson, B., and McMahon, T.: A global classification of river regimes, *Applied Geography*, 8, 255-
17 272, 1988.

18 Hanasaki, N., Kanae, S., Oki, T., Masuda, K., Motoya, K., Shirakawa, N., Shen, Y., and Tanaka, K.: An
19 integrated model for the assessment of global water resources—part 1: Model description and input
20 meteorological forcing, *Hydrol. Earth Syst. Sci*, 12, 1007-1025, 2008.

21 Hessari, B., Bruggeman, A., Akhoond-Ali, A., Oweis, T., and Abbasi, F.: Supplemental irrigation potential and
22 impact on downstream flow of karkheh river basin of iran, *Hydrology and Earth System Sciences Discussions*, 9,
23 13519-13536, 2012.

24 Hoekstra, A. Y., and Mekonnen, M. M.: Global water scarcity: The monthly blue water footprint compared to
25 blue water availability for the world's major river basins, UNESCO-IHE Institute for Water Education, Delft, The
26 Netherlands, No. 53, 78pp, 2011.

27 Hoekstra, A. Y., and Mekonnen, M. M.: The water footprint of humanity, *Proceedings of the National Academy
28 of Sciences*, vol. 109, 3232-3237, doi:10.1073/pnas.1109936109, 2012.

29 Hoekstra, A. Y., Mekonnen, M. M., Chapagain, A. K., Mathews, R. E., and Richter, B. D.: Global monthly water
30 scarcity: Blue water footprints versus blue water availability, *PLoS One*, 7, 2012.

31 Hoff, H., Falkenmark, M., Gerten, D., Gordon, L., Karlberg, L., and Rockström, J.: Greening the global water
32 system, *Journal of Hydrology*, 384, 177-186, 2010.

33 Hughes, D. A.: Providing hydrological information and data analysis tools for the determination of ecological
34 instream flow requirements for south african rivers, *Journal of Hydrology*, 241, 140-151,
35 doi:org/10.1016/S0022-1694(00)00378-4, 2001.

36 Hugues, F. M. R., and Rood, S. B.: Allocation of river flows for restoration of floodplain forest ecosystems: A
37 review of approaches and their applicability in europe, *Environmental management*, 32, 12-33,
38 doi:10.1007/s00267-003-2834-8, 2003.

39 Jowett, I.: River hydraulic and habitat simulation, rhyhabsim computer manual, Ministry of Agriculture and
40 Fisheries, Christchurch, New Zealand, Report 49, 39pp, 1989.

41 Kashaigili, J. J., McCartney, M., and Mahoo, H. F.: Estimation of environmental flows in the great ruaha river
42 catchment, tanzania, *Physics and Chemistry of the Earth, Parts A/B/C*, 32, 1007-1014,
43 doi:10.1016/j.pce.2007.07.005, 2007.

44 Kennard, M. J., Mackay, S. J., Pusey, B. J., Olden, J. D., and Marsh, N.: Quantifying uncertainty in estimation of
45 hydrologic metrics for ecohydrological studies, *River Research and Applications*, 26, 137-156, 2010.

46 King, J., and Louw, D.: Instream flow assessments for regulated rivers in south africa using the building block
47 methodology, *Aquatic Ecosystem Health & Management*, 1, 109-124, 10.1080/14634989808656909, 1998.

48 King, J., and Brown, C.: Integrated basin flow assessments: Concepts and method development in africa and
49 south-east asia, *Freshw Biol*, 55, 127-146, doi:10.1111/j.1365-2427.2009.02316.x, 2010.

50 Kingsford, R. T., and Auld, K. M.: Waterbird breeding and environmental flow management in the macquarie
51 marshes, arid australia, *River Research and Applications*, 21, 187-200, doi:10.1002/Rra.840, 2005.

52 Liang, X., Lettenmaier, D. P., Wood, E. F., and Burges, S. J.: A simple hydrologically based model of land
53 surface water and energy fluxes for general circulation models, *Journal of Geophysical Research: Atmospheres
54 (1984-2012)*, 99, 14415-14428, 1994.

55 Loh, J., Collen, B., McRae, L., Deinet, S., De Palma, A., Manley, R., and Baillie, J. E. M.: Living planet report
56 2010, WWF International, Gland, Switzerland, 2010.

57 Marchetti, M. P., and Moyle, P. B.: Effects of flow regime on fish assemblages in a regulated california stream,
58 *Ecological Applications*, 11, 530-539, doi:10.1890/1051-0761, 2001.

59 Mathews, R., and Richter, B. D.: Application of the indicators of hydrologic alteration software in environmental
60 flow setting, *JAWRA Journal of the American Water Resources Association*, 43, 1400-1413, doi:10.1111/j.1752-
61 1688.2007.00099.x, 2007.

62 McMahon, T. A., Peel, M. C., Vogel, R. M., and Pegram, G. G. S.: Global streamflows—part 3: Country and
63 climate zone characteristics, *Journal of Hydrology*, 347, 272-291, 2007.

64 McManamay, R. A., Orth, D. J., Dolloff, C. A., and Mathews, D. C.: Application of the eloha framework to
65 regulated rivers in the upper tennessee river basin: A case study, *Environmental Management*, 1-26, 2013.

66 Milhous, R. T.: History, theory, use, and limitations of the physical habitat simulation system, *Proceedings of
67 the Third International Symposium on Ecohydraulics*. Utah State University Extension. Logan, Utah. , 1999,

68 Nash, J. E., and Sutcliffe, J. V.: River flow forecasting through conceptual models part i — a discussion of
69 principles, *Journal of Hydrology*, 10, 282-290, doi:10.1016/0022-1694(70)90255-6, 1970.

70 NGPRP: Instream needs sub-group report, Environmental Quality Council, Helena, Mont., USA, 244pp., 1974.

71 O'Keefe, J.: Sustaining river ecosystems: Balancing use and protection, *Progress in Physical Geography*, 33,
72 339-357, doi:10.1177/0309133309342645, 2009.

1 O'Keeffe, J., and Quesne, T.: Keeping rivers alive: A primer on environmental flows, Wwf water security series
2 2, 39 pp., 2009.

3 Oberdorff, T., Tedesco, P. A., Hugueny, B., Leprieur, F., Beauchard, O., Brosse, S., and Dürr, H. H.: Global and
4 regional patterns in riverine fish species richness: A review, *International Journal of Ecology*, 2011, 2011.

5 Pahl-Wostl, C., Arthington, A., Bogardi, J., Bunn, S. E., Hoff, H., Lebel, L., Nikitina, E., Palmer, M., Poff, L. N.,
6 Richards, K., Schlüter, M., Schulze, R., St-Hilaire, A., Tharme, R., Tockner, K., and Tsegai, D.: Environmental
7 flows and water governance: Managing sustainable water uses, *Current Opinion in Environmental Sustainability*,
8 doi:10.1016/j.cosust.2013.06.009, 2013.

9 Palau, A.: Integrated environmental management of current reservoirs and regulated rivers, *Limnetica*, 25,
10 287-302, 2006.

11 Palau, A., and Alcázar, J.: The basic flow method for incorporating flow variability in environmental flows, *River
12 Research and Applications*, 28, 93-102, 2010.

13 Palmer, M. A., Reidy Liermann, C. A., Nilsson, C., Flörke, M., Alcamo, J., Lake, P. S., and Bond, N.: Climate
14 change and the world's river basins: Anticipating management options, *Frontiers in Ecology and the
15 Environment*, 6, 81-89, 2008.

16 Pettit, N. E., Froend, R. H., and Davies, P. M.: Identifying the natural flow regime and the relationship with
17 riparian vegetation for two contrasting western australian rivers, *Regulated Rivers-Research & Management*,
18 17, 201-215, doi:10.1002/Rrr.624, 2001.

19 Poff, N. L., Richter, B. D., Arthington, A. H., Bunn, S. E., Naiman, R. J., Kendy, E., Acreman, M., Apse, C.,
20 Bledsoe, B. P., and Freeman, M. C.: The ecological limits of hydrologic alteration (eloha): A new framework for
21 developing regional environmental flow standards, *Freshw Biol*, 55, 147-170, 2009.

22 Poff, N. L., and Zimmerman, J. K.: Ecological responses to altered flow regimes: A literature review to inform
23 the science and management of environmental flows, *Freshwater Biology*, 55, 194-205, 2010.

24 Pokhrel, Y., Hanasaki, N., Koirala, S., Cho, J., Yeh, P. J. F., Kim, H., Kanae, S., and Oki, T.: Incorporating
25 anthropogenic water regulation modules into a land surface model, *Journal of Hydrometeorology*, 13, 255-269,
26 doi:10.1175/jhm-d-11-013.1, 2011.

27 Portmann, F. T., Siebert, S., and Döll, P.: Mirca2000—global monthly irrigated and rainfed crop areas around
28 the year 2000: A new high-resolution data set for agricultural and hydrological modeling, *Global Biogeochem.
29 Cycles*, 24, GB1011, doi:10.1029/2008gb003435, 2010.

30 Pouilly, M., and Aguilera, G.: Evaluación
31 inicial de caudales ecológicos/ambientales en la cuenca del río huasco – chile,
32 mediante la simulación del hábitat físico del pejerrey *basilichthys microlepidotus* y el camarón de río *cryphiops c
33 aementarius.*, *UICN, Quito, Ecuador.*, 57, 2012.

34 Richter, B. D., Baumgartner, J., Wigington, R., and Braun, D.: How much water does a river need?, *Freshw
35 Biol*, 37, 231-249, doi:10.1046/j.1365-2427.1997.00153.x, 1997.

36 Richter, B. D., Mathews, R., Harrison, D. L., and Wigington, R.: Ecologically sustainable water management:
37 Managing river flows for ecological integrity, *Ecological Applications*, 13, 206-224, doi:10.1890/1051-0761,
38 2003.

39 Richter, B. D., Warner, A. T., Meyer, J. L., and Lutz, K.: A collaborative and adaptive process for developing
40 environmental flow recommendations, *River Research and Applications*, 22, 297-318, 2006.

41 Richter, B. D.: Re-thinking environmental flows: From allocations and reserves to sustainability boundaries,
42 *River Research and Applications*, 26, 1052-1063, 2010.

43 Richter, B. D., Davis, M. M., Apse, C., and Konrad, C.: A presumptive standard for environmental flow
44 protection, *River Research and Applications*, 28, 1312-1321, 2012.

45 Rockström, J., Falkenmark, M., Karlberg, L., Hoff, H., Rost, S., and Gerten, D.: Future water availability for
46 global food production: The potential of green water for increasing resilience to global change, *Water Resources
47 Research*, 45, doi:10.1029/2007wr006767, 2009.

48 Shafroth, P. B., Wilcox, A. C., Lytle, D. A., Hickey, J. T., Andersen, D. C., Beauchamp, V. B., Hautzinger, A.,
49 McMullen, L. E., and Warner, A.: Ecosystem effects of environmental flows: Modelling and experimental floods
50 in a dryland river, *Freshw Biol*, 55, 68-85, 2009.

51 Smakhtin, V., Revenga, C., and Doll, P.: A pilot global assessment of environmental water requirements and
52 scarcity, *Water International*, 29, 307-317, 2004.

53 Smakhtin, V. U., Shilpakar, R. L., and Hughes, D. A.: Hydrology-based assessment of environmental flows: An
54 example from nepal, *Hydrological Sciences Journal-Journal Des Sciences Hydrologiques*, 51, 207-222,
55 doi:10.1623/hysj.51.2.207, 2006.

56 Sun, T., Yang, Z., and Cui, B.: Critical environmental flows to support integrated ecological objectives for the
57 yellow river estuary, china, *Water Resources Management*, 22, 973-989, 2008.

58 Symphorian, G. R., Madamombe, E., and van der Zaag, P.: Dam operation for environmental water releases;
59 the case of osborne dam, save catchment, zimbabwe, *Physics and Chemistry of the Earth, Parts A/B/C*, 28,
60 985-993, 2003.

61 Telis, P. A., and District, P. H. W.: Techniques for estimating 7-day, 10-year low-flow characteristics for
62 unaged sites on streams in mississippi, *US Geological Survey, Tallahassee, MS, USA, Water-Resources
63 Investigations Report 91-4130*, 143 pp., 1992.

64 Tennant, D. L.: Instream flow regimens for fish, wildlife, recreation and related environmental resources,
65 *Fisheries*, 1, 6-10, 1976.

66 Tessmann, S.: Environmental assessment, technical appendix e in environmental use sector reconnaissance
67 elements of the western dakotas region of south dakota study. *South dakota state university, Water Resources
68 Institute, South Dakota State University, Brookings, South Dakota*, 1980.

69 Tharme, R. E.: A global perspective on environmental flow assessment: Emerging trends in the development
70 and application of environmental flow methodologies for rivers, *River Research and Applications*, 19, 397-441,
71 doi:10.1002/Rra.736, 2003.

1 van Beek, L. P. H., Wada, Y., and Bierkens, M. F. P.: Global monthly water stress: 1. Water balance and water
2 availability, *Water Resources Research*, 47, W07517, doi:10.1029/2010wr009791, 2011.

3 Vliet, M. H., Ludwig, F., and Kabat, P.: Global streamflow and thermal habitats of freshwater fishes under
4 climate change, 121, 739-754, 10.1007/s10584-013-0976-0, 2013.

5 Vorosmarty, C. J., McIntyre, P. B., Gessner, M. O., Dudgeon, D., Prusevich, A., Green, P., Glidden, S., Bunn, S.
6 E., Sullivan, C. A., Liermann, C. R., and Davies, P. M.: Global threats to human water security and river
7 biodiversity *Nature*, 468, 334-334, doi:10.1038/Nature09549, 2010.

8 Werth, S., and Güntner, A.: Calibration analysis for water storage variability of the global hydrological model
9 wghm, *Hydrol. Earth Syst. Sci.*, 14, 59-78, doi:10.5194/hess-14-59-2010, 2010.

10 Yasi, M., Karimi, S. S., and Yasi, A.: Eco-hydrological approach for determining environmental flows in rivers
11 9th International Symposium on Ecohydraulics 2012, Vienna, Austria, September 17-21, 2012.

12 Ziv, G., Baran, E., Nam, S., Rodríguez-Iturbe, I., and Levin, S. A.: Trading-off fish biodiversity, food security,
13 and hydropower in the mekong river basin, *Proceedings of the National Academy of Sciences*, 109, 5609-5614,
14 2012.

15
16
17

1

2 **Table 1.** Description of regional environmental flow methods.

3

Type of EF method	Data input	Example	Sources
Hydrological	Long-term datasets of unregulated or naturalized daily flows (> 20 years)	Tennant, Tessman, IHA, RVA, DRM, ABF	(Babel et al., 2012;Smakhtin et al., 2006;Tennant, 1976;Tessmann, 1980;Richter et al., 1997;Richter, 2010;Armstrong et al., 1999)
Hydraulic	Flow velocity, river crossing area	R2Cross method	(Armstrong et al., 1999)
Habitat-simulation	Flow velocity, river cross section, dataset of a fish specie	PHABSIM, IFIM	(Capra et al., 2003;Milhous, 1999;Bovee, 1986;Bovee et al., 1998)
Holistic	Combination of hydrological, hydraulics, ecological, and social sciences (expert knowledge)	Building block method (BBM), ELOHA, DRIFT	(Hughes, 2001;King and Louw, 1998;Arthington et al., 2006;Poff et al., 2009;Bunn and Arthington, 2002)

4

1 **Table 2.** Description of geographic coordinates of the case studies and their hydrological datasets.
2

Case studies	Latitude	Longitude	Daily flow data used in case studies	Daily flow data used in this study
Bill William River, USA (Shafroth et al. 2009)	34.23	-113.60	Pre-dam data (1940-1965)	GRDC 4152120
Ipswich River, USA (Armstrong et al. 1999)	42.57	-71.03	Ipswich flow data (1961-1995)	20 years LPJml simulation without landuse and irrigation (PNV run)
Silvan River, Spain (Palau and Alcázar, 2010)	42.37	-6.63	Natural flow data (1980-1998): no flow regulation	Dataset from the authors
Osborne River, Zimbabwe (Symphorian et al., 2003)	-18.75	32.25	Naturalized flow data (1961-1973)	Dataset from the authors
Voijm Dam, Sweden (Renofalt et al., 2010)	62.80	17.93	Pre-dam data (1909-1940)	Dataset from the authors
Newhalen River, Alaska (Estes, 1998)	59.25	-154.75	Pre-dam data (1951-1986)	USGS 153000000
Hong Kong, China (Niu and Dudgeon, 2011)	22.27	113.95	Natural flow data (2007-2008)	20 years LPJml simulation without landuse and irrigation (PNV run)
La Gna River, Vietnam (Babel et al., 2012)	10.82	107.15	Pre-dam data (1977-1999)	Dataset from the authors
Great Ruaha River, Tanzania (Kashaigili et al., 2007)	-7.93	37.87	Pre-dam data (1958-1973)	20 years LPJml simulation without landuse and irrigation (PNV run)
Huasco River, Chile (UICN, 2012)	-28.43	-71.20	Historical data (1975-1988)	Dataset from the authors
Sharh Chai River, Iran (Yasi et al., 2012)	37.70	45.32	Pre-dam data (1949-2004)	Dataset from the authors

3

Table 3. Inter-comparison of hydrological indicators of the case studies.

Case studies	Major Habitat Type (Abell et al., 2009)	Environmental flow method type ¹	MAF ² (LF ³ -HF ⁴)	BFI ⁵	HVI ⁶	Nb. high-flow months	Nb. intermediate months	Nb. low-flow months
Bill William River, USA (Shafroth et al. 2009)	Xeric freshwater	4. HEC-EFM	2.7 (0.8-5.3)	5.3	2	6	0	6
Sharh Chai River, Iran (Yasi et al, 2012)	Xeric freshwater	1. GEFC (class C)	5.3 (1.6-12.7)	21.1	3.3	4	1	7
Ipswich River, US (Armstrong et al. 1999)	Temperate coastal river	2. R2Cross method	265 (120-556)	22.6	1.3	5	2	5
Silvan River, Spain (Palau and Alcázar, 2010)	Temperate coastal river	3. RHYHABSIM (class B)	0.7 (0.3-0.9)	21.5	0.9	7	2	3
Osborne Dam, Zimbabwe (Symphorian et al., 2003)	Temperate coastal river	1. Hugues method (class B)	39.7 (25.2-55.8)	43.6	0.6	5	5	2
Huasco River, Chile (Pouilly and Aguilera, 2012)	Temperate coastal river	3. PHABSIM	6.2 (5.3-8.9)	80.6	0.2	12	0	0
Vojm Dam, Sweden (Renofalt et al., 2010)	Polar freshwater	4. Expert knowledge	39 (16.3-71)	51.3	0.7	6	2	4
Newhalen River, Alaska (Estes, 1998)	Polar freshwater	1. Tennant (fair/degrading class) 3. Macroinvertebrates sampling	284 (98.1-544.3)	21.5	2.2	5	2	5
Hong Kong, China (Niu and Dudgeon, 2011)	Tropical floodplain	(degrading and outstanding classes)	1119 (317-1921)	12	1.6	6	2	4
La Gna River, Vietnam (Babel et al., 2012)	Tropical and subtropical coastal river	1. RVA approach (Q_{25} - Q_{75})	133.5 (49.4-251.3)	15.4	1.7	5	1	6
Great Ruaha River, Tanzania (Kashaigili et al., 2007)	Tropical and subtropical coastal river	1. Desktop Reserve Model (class C/D)	245 (45-524.4)	6.4	4.3	5	1	6

1. Environmental flow method type: 1. hydrological, 2. hydraulic 3. habitat simulation, 4. holistic,

2. MAF: Mean Annual Flow [$\text{m}^3 \text{s}^{-1}$]

3. LF: Low-flow average calculated as the average flow when $\text{MMF} \geq \text{MAF}$ [$\text{m}^3 \text{s}^{-1}$]

4. HF: High-flow average calculated as the average flow when $\text{MMF} \leq \text{MAF}$ [$\text{m}^3 \text{s}^{-1}$]

5. Base flow index: Q_{90}/MAF (see Eq.1)

6. Hydrological variability index: $(Q_{25}-Q_{75})/Q_{50}$ (see Eq. 2)

Table 4. Description of tested hydrological environmental flow methods with MAF (the Mean Annual Flow), MMF (the Mean Monthly Flow), Q90 (where the flow exceeded 90% of the period of record), and Q50 (where the flow exceeded 50% of the period of record). HFRs, IFRs and LFRs are used for high, intermediate, and low-flow requirements, respectively.

Hydrological season	Smakhtin (2004)	Tennant (1976)	Q ₉₀ -Q ₅₀ (this study)	Tessman (1980) _b	Variable Monthly Flow (this study) _c
Determination of low-flow months	MMF≤MAF	MMF≤MAF	MMF≤MAF	MMF≤0.4*MAF	MMF≤0.4*MAF
Low-flow requirements (LFRs)	Q90	0.2*MAF	Q90	MMF	0.6*MMF
Determination of high-flow months	MMF>MAF	MMF>MAF	MMF>MAF	MMF>0.4*MAF & 0.4*MMF>0.4*MAF	MMF>0.8*MAF
High-flow requirements (HFRs)	0 to 0.2*MAF _a	0.4*MAF	Q50	0.4*MMF	0.3*MMF
Determination of intermediate-flow months	-	-	-	MMF>0.4*MAF & 0.4*MMF≤0.4*MAF	MMF>0.4*MAF & MMF≤0.8*MAF
Intermediate-flow requirements (IFRs)	-	-	-	0.4*MAF	0.45*MMF

- a. If Q90>30%MAF, HFRs=0,
 If Q90<30% and Q90>20%, HFRs=7%MAF,
 If Q90<20% and Q90>10%, HFRs=15%MAF,
 If Q90<10%, HFRs=20%MAF.
- b. Only the Tessmann and the Variable Monthly Flow methods require intermediate-flow determination, as their methods are based on monthly flows. The other methods (Smakhtin, Tennant, and Q₉₀-Q₅₀) only allocate EFRs in high- and low-flow seasons, and finally the Hoekstra method does not distinguish between the high-flow and low-flow season.

Table 5. Comparison of annual average of environmental flow requirements (EFRs) per method and per case study (EFR: Environmental flow requirements, LFR: Low-flow requirements, HFR: High-flow Requirements). EFR is expressed as a percentage of mean annual discharge of river in “natural” conditions; LFR is expressed as a percentage of mean annual low-flow; HFR is expressed as a percentage of mean annual high-flow.

Case studies	MHT class (Abell et al., 2009)	EFR case study (LFR and HFR)	Variable Monthly Flow (LFR and HFR)	Smakhtin (LFR and HFR)	Tennant (LFR-HFR)	Tessmann (LFR-HFR)	Q ₉₀ -Q ₅₀ (LFR-HFR)	Average all EFR results (average LFR-average HFR)
Bill William River, USA (Shafroth et al. 2009)	Xeric freshwater	63 (133 - 48)	33 (46-30)	12 (18-11)	27 (67-18)	46 (72-40)	6 (18-3)	46 (48-26)
Sharh Chai River, Iran (Yasi et al., 2012)	Xeric freshwater	51 (42-53)	35 (56-30)	19 (70-15)	27 (66-17)	50 (90-40)	19 (70-13)	33 (66-28)
Ipswich River, USA (Armstrong et al., 1999)	Temperate coastal river	25 (56-12)	35 (47-30)	25 (50-14)	27 (44-19)	49 (60-30)	37 (44-19)	33 (46-17)
Silvan River, Spain (Palau and Alcázar, 2010)	Temperate coastal river	34 (58-28)	34 (50-30)	26 (54-20)	33 (56-28)	46 (73-40)	77 (89-74)	43 (63-37)
Osborne Dam, Zimbabwe (Symphorian et al., 2003)	Temperate coastal river	46 (84-13)	32 (44-27)	44 (73-26)	27 (34-24)	46 (66-35)	59 (73-53)	44 (62-29)
Huasco River, Chile (Pouilly and Aguilera, 2012)	Temperate coastal river	34 (30-42)	30 (30-30)	81 (94-56)	25 (23-28)	44 (47-44)	83 (94-64)	54 (53-45)
Voijm Dam, Sweden (Renofalt et al., 2010)	Polar freshwater	20 (18-21)	34 (45-30)	51 (123-28)	28 (48-22)	48 (72-40)	69 (123-52)	43 (71-32)
Newhalen River, Alaska (Estes, 1998)	Polar freshwater	18 (27-14)	35 (53-30)	20 (62-15)	32 (58-21)	30 (88-40)	50 (63-29)	30 (59-25)
Hong Kong, China (Niu and Dudgeon, 2011)	Tropical floodplain	48 (77-44)	53 (50-30)	19 (42-16)	30 (71-23)	40 (82-40)	53 (42-54)	38 (67-32)
La Gna River, Vietnam (Babel et al., 2012)	Tropical and subtropical coastal river	53 (50-54)	35 (52-30)	28 (31-9)	28 (54-21)	48 (75-40)	38 (42-38)	39 (51-32)
Great Ruaha River, Tanzania (Kashaigili et al., 2007)	Tropical and subtropical coastal river	22 (19-22)	33 (54-30)	15 (35-12)	28 (109-19)	46 (92-40)	19 (58-17)	25 (61-19)
Average per method		37 (43-28)	40 (48-30)	31 (59-20)	32 (57-22)	40 (74-39)	43 (65-38)	37 (56-34)

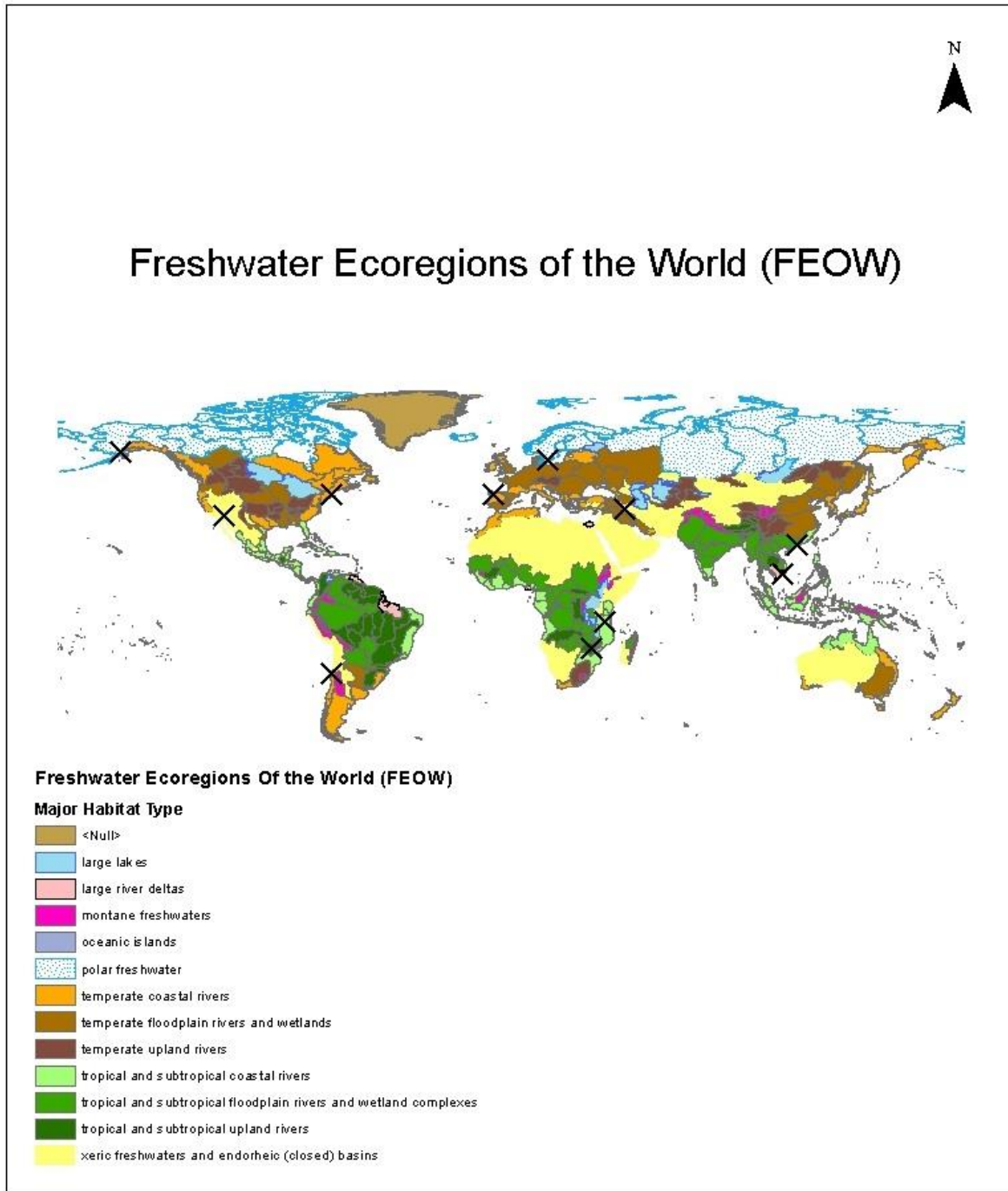


Fig. 1. Location of 11 case studies where environmental flow requirements (EFRs) were locally defined.

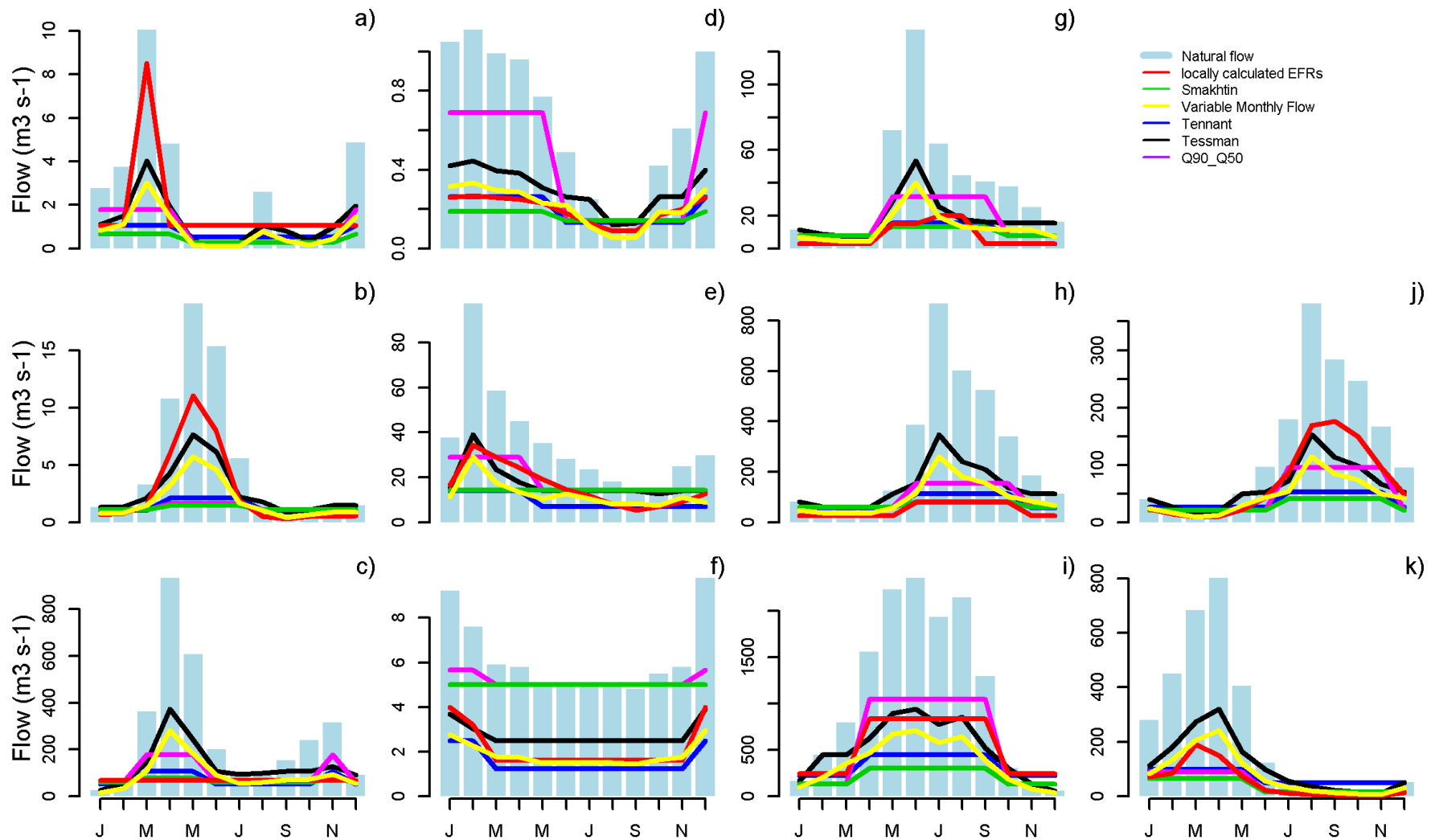


Fig. 2. Comparison of EF methods with locally calculated EFRs in different case studies a) BWR, USA, b) Urmia Dam, Iran c) Ipswich River, US, d) Silvan River, Spain, e) Osborne Dam, Zimbabwe f) Huasco River, Chile g) Voijm Dam, Sweden, h) Newhalen River, Alaska, i) Hong Kong stream, China, j) Gna River, Vietnam, k) Great Ruaha River, Tanzania. Observed or simulated natural flows from case studies are presented in light blue, except for natural flows c) and e) which were simulated with LPJml.

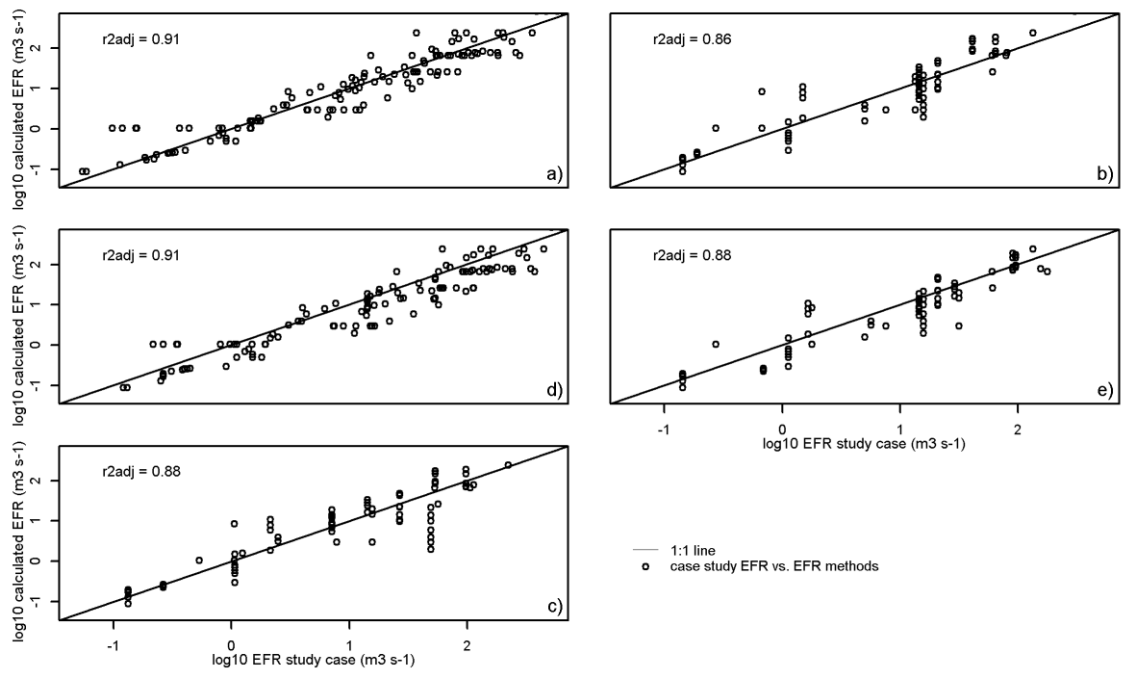


Fig. 3. Relation between the monthly calculated EFRs and the locally calculated monthly EFRs of 11 case studies with the (a) Variable Monthly Flow, (b) Smakhtin, (c) Tessmann, (d) Q_{90} - Q_{50} , (e) Tennant methods. In each sub-figure, each dot represents EFRs for one month and for one case study.

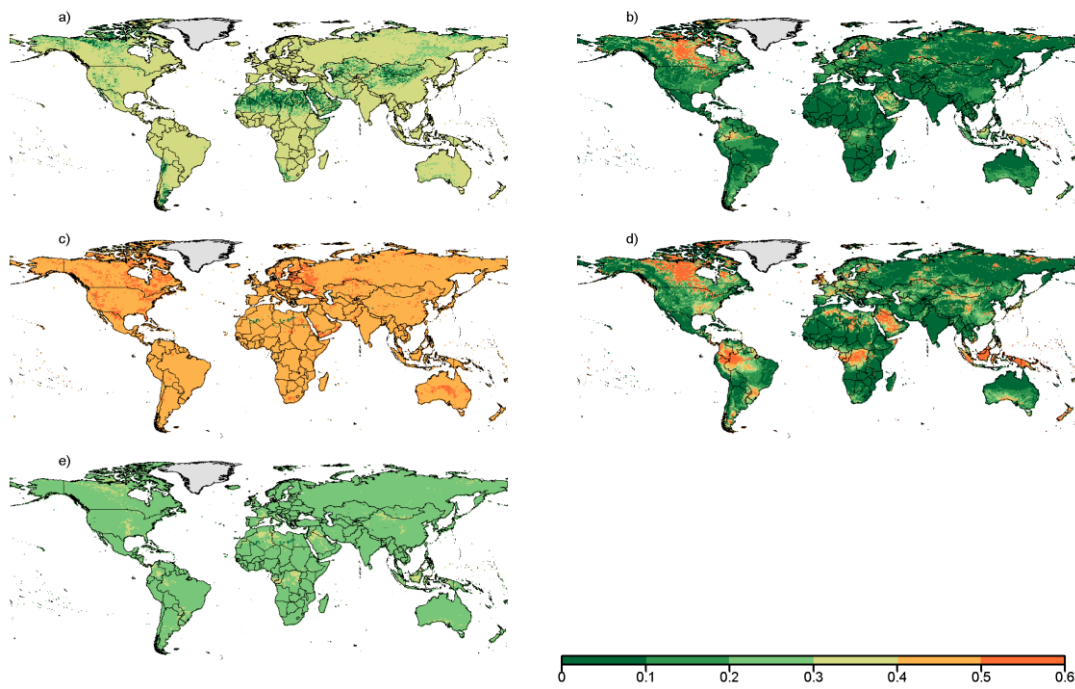


Fig. 4. Ratios of annual environmental flow by annual natural flow within a) Variable Monthly Flow, b) Smakhtin, c)Tessmann, d) $Q_{90}\text{-}Q_{50}$, e) Tennant environmental flow methods.

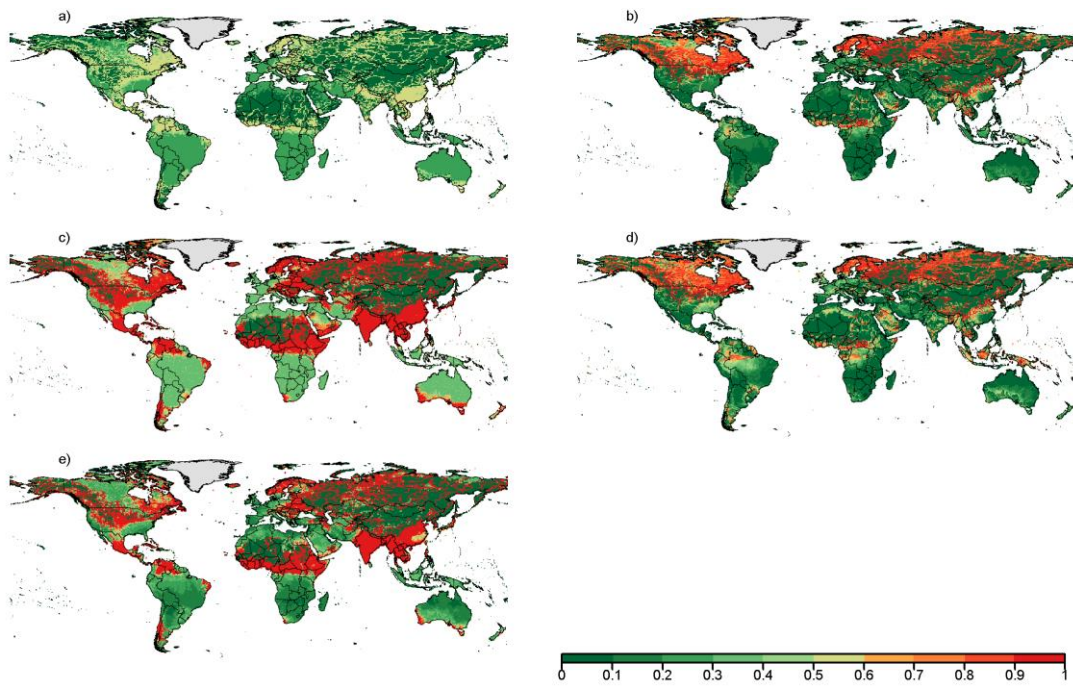


Fig. 5. Ratios of monthly environmental flow by monthly actual flow (January) within a) Variable Monthly Flow , b) Smakhtin, c)Tessmann, d) $Q_{90_Q_{50}}$, e) Tennant environmental flow methods.

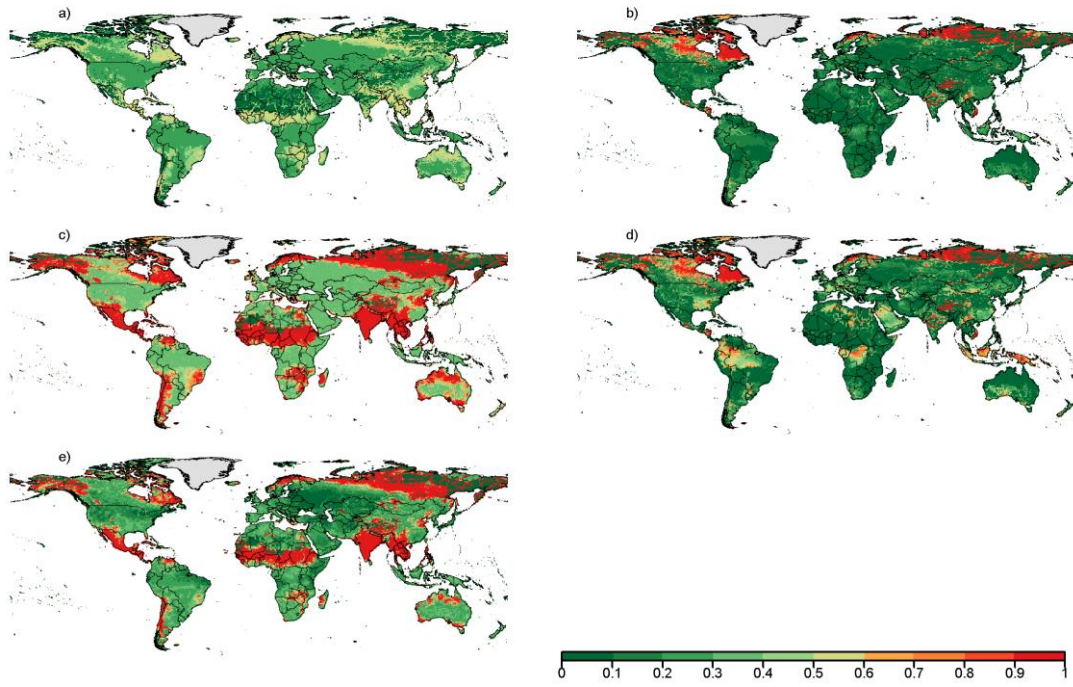


Fig. 6. Ratios of monthly environmental flow by monthly actual flow (April) within a) Variable Monthly Flow, b) Smakhtin, c) Tessmann, d) $Q_{90}-Q_{50}$, e) Tennant environmental flow methods.

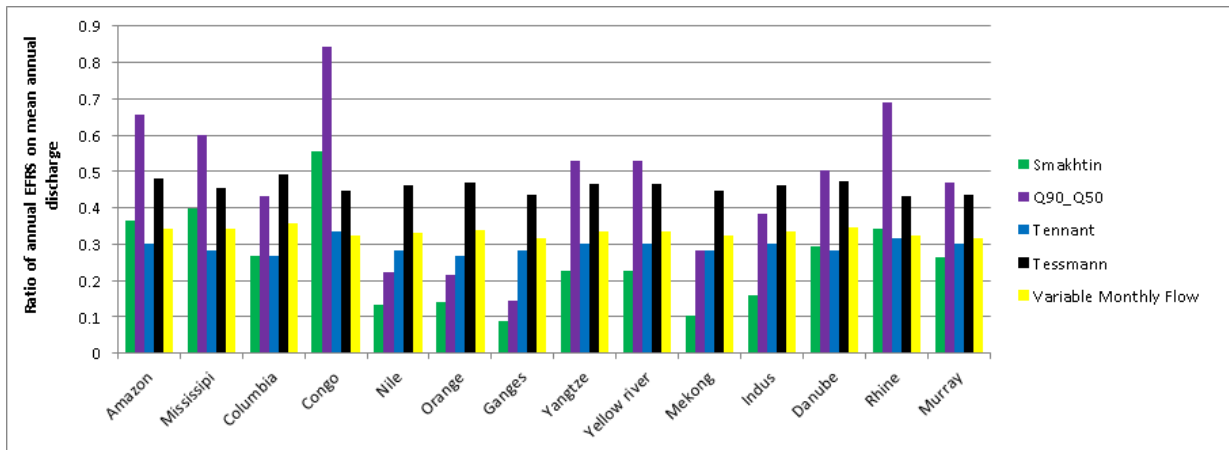


Fig. 7. Comparison of five environmental flow methods at the outlet of 14 river basins.