

This discussion paper is/has been under review for the journal Hydrology and Earth System Sciences (HESS). Please refer to the corresponding final paper in HESS if available.

A journey of a thousand miles begins with one small step – human agency, hydrological processes and time in socio-hydrology

M. W. Ertsen¹, J. T. Murphy², L. E. Purdue³, and T. Zhu¹

¹Delft University of Technology, Delft, the Netherlands

²Argonne National Laboratory, University of Chicago, Chicago, USA

³School of Sustainability, Arizona State University, Tempe, USA

Received: 4 November 2013 – Accepted: 6 November 2013 – Published: 21 November 2013

Correspondence to: M. W. Ertsen (m.w.ertsen@tudelft.nl)

Published by Copernicus Publications on behalf of the European Geosciences Union.

**A journey of a
thousand miles
begins with one
small step**

M. W. Ertsen et al.

Title Page

Abstract

Introduction

Conclusions

References

Tables

Figures

⏪

⏩

◀

▶

Back

Close

Full Screen / Esc

Printer-friendly Version

Interactive Discussion

Abstract

When simulating social action in modeling efforts, as in socio-hydrology, an issue of obvious importance is how to ensure that social action by human agents is well-represented in the analysis and the model. Generally, human decision-making is either modeled on a yearly basis or lumped together as collective social structures. Both responses are problematic, as human decision making is more complex and organizations are the result of human agency and cannot be used as explanatory forces. A way out of the dilemma how to include human agency is to go to the largest societal and environmental clustering possible: society itself and climate, with time steps of years or decades. In the paper, the other way out is developed: to face human agency squarely, and direct the modeling approach to the human agency of individuals and couple this with the lowest appropriate hydrological level and time step. This approach is supported theoretically by the work of Bruno Latour, the French sociologist and philosopher. We discuss irrigation archaeology, as it is in this discipline that the issues of scale and explanatory force are well discussed. The issue is not just what scale to use: it is what scale matters. We argue that understanding the arrangements that permitted the management of irrigation over centuries, requires modeling and understanding the small-scale, day-to-day operations and personal interactions upon which they were built. This effort, however, must be informed by the longer-term dynamics as these provide the context within which human agency, is acted out.

1 Introduction

Simulating social action is a rising field of study. Based on detailed, empirical study and specific understanding of both human actions and networks in society, more and more elaborate models are being constructed. An issue of obvious importance is how to ensure that social action by human agents is well-represented in the analysis and the model; this issue is of vital importance for socio-hydrology as well. Although not

HESSD

10, 14265–14304, 2013

A journey of a thousand miles begins with one small step

M. W. Ertsen et al.

Title Page

Abstract

Introduction

Conclusions

References

Tables

Figures

⏪

⏩

◀

▶

Back

Close

Full Screen / Esc

Printer-friendly Version

Interactive Discussion



HESSD

10, 14265–14304, 2013

A journey of a thousand miles begins with one small step

M. W. Ertsen et al.

[Title Page](#)

[Abstract](#)

[Introduction](#)

[Conclusions](#)

[References](#)

[Tables](#)

[Figures](#)

[⏪](#)

[⏩](#)

[◀](#)

[▶](#)

[Back](#)

[Close](#)

[Full Screen / Esc](#)

[Printer-friendly Version](#)

[Interactive Discussion](#)



necessarily so, in general one can find two responses to the question how to represent human agency. In a first one, human decision-making – if considered at all – is modeled on a yearly basis; in a second one, human agency is lumped together, assuming that collective social structures – states, companies, but also social class or gender – provide an adequate framework representing human decision-making. We argue that both responses are problematic.

Humans make decisions every day and not once a year, and even the once a year decisions (where to go on holiday for example) are not made once a year, but are more to be seen as a series of decisions. Clustering humans into organizations is problematic as well, as these organizations themselves are the result of agency, and clustering usually means associating certain predefined features to those entities. Those features will usually also be the result of the model, and as such we have a problem of circularity. Please note that we do not argue that social structures do not exist, as anyone studying society would recognize that certain hierarchies, arenas and institutions do exist. We do argue, however, that these social structures can never be used as explanatory forces for processes we observe.

Comparable dangers can be expected for socio-hydrology, if it is not done carefully. The short-term effects of hydrology on humans and the actions of humans to counter those which in turn affect hydrology and so on need to be included in the model. This means allowing for time patterns of wet years and dry years, abundant crop yields and crop failures, times of economic prosperity and depression, shifts in the dominant politics, major storms, etc. etc., and most of all how these patterns overly one another. Short-term memories have a major impact on water resources use by individuals and management policies by administrators.

We argue that there are two feasible ways out of this issue, or two levels of modeling that we can do relatively safely; we will develop some more specific ideas about one of them. The first way out of the dilemma how to include human agency is basically to ignore it completely and to go to the largest societal and environmental clustering possible: society itself and climate, with a reasonable time step of years or decades, to

determine links between the two to test certain theories and define/find/test analogies. We will not develop this idea further, as it is discussed in the contribution of Pande and Ertsen to the SI in HESS-D (Pande and Ertsen, 2013).

The other way, and the one we will develop further in this paper, is to face human agency squarely. To do so we direct our modeling approach to the human agency of individuals – arguably the lowest possible scale that could be called a “social” approach – and couple this with the lowest appropriate hydrological level and time step: daily or hourly rain and/or flow. With this approach we can employ our models to ask under which cultural-organizational constraints model outcomes are supported by our data. This detailed modeling predefines as few cultural aspects as possible in the human agents; instead it treats cultural aspects as constraining contexts for the model, which itself is based on actions and materiality. Personal relationships, in networks and institutions, are outcomes of the model’s operation.

This second approach is supported theoretically by the work of Bruno Latour, the French sociologist and philosopher. Latour argues that human decision-making and development of societal institutions is a local activity and constructed within networks of actors (Latour, 2005). These networks are continuously created and recreated by human actors engaging with other human actors and non-human intermediaries. Actor-networks are to be understood as a unit:

“An actor-network is traced whenever, in the course of a study, the decision is made to replace actors of whatever size by local and connected sites instead of ranking them into micro and macro. The two parts are essential, hence the hyphen. The first part (the actor) reveals the narrow space in which all of the grandiose ingredients of the world begin to be hatched; the second part (the network) may explain through which vehicles, which traces, which trails, which types of information, the world is brought *inside* those places and then, after having been transformed there, are being pumped back *out* of it narrow walls. This is why the hyphenated “network” is not there

HESSD

10, 14265–14304, 2013

A journey of a thousand miles begins with one small step

M. W. Ertsen et al.

[Title Page](#)

[Abstract](#)

[Introduction](#)

[Conclusions](#)

[References](#)

[Tables](#)

[Figures](#)

[⏪](#)

[⏩](#)

[◀](#)

[▶](#)

[Back](#)

[Close](#)

[Full Screen / Esc](#)

[Printer-friendly Version](#)

[Interactive Discussion](#)



as a surreptitious presence of the Context, but remains what connects the actors together.” (Latour, 2005, 179–180 pp.).

Recognizing that there is no “inside” or “outside”, or “local” or “context”, but that networks are created through human agency engaging with other human agents and material realities (like roads and rain), is important, as it warns those studying networks that any pre-suggested division in terms of levels, contexts or relations needs to be avoided. The resulting networks build links between short and long term human responses from individual to societal level to water flows and their stochastic natures on scales as different as flows in hours to volumes per year, decade or even century.

In this paper we discuss how such a focus on the short-term, small-scale interactions among people and with their environment can be developed. We focus our discussion on irrigation systems, and specifically on studies within archaeology, as these studies provide data sets that allow linking short term to long term. Irrigation is complex, due to feedbacks between material environment – the water source – and humans. Because of the highly detailed and complex relations between human actions and the social and material context in irrigation, it is extremely difficult to develop a well-suited scientific approach to model it. Not only do we need to understand the effect of material conditions on human actions but we also need to understand how human agency is linked to rules within irrigation systems. As such, irrigation is a clear – if not one of the best – example of socio-hydrology.

Perhaps paradoxically, archaeological examples are useful for this discussion because the archaeological record, with respect to many things we might wish to know, is incomplete. The lacunae in our knowledge impinge on our modeling efforts in a way that brings questions of scale to the fore: we are forced to choose abstractions, and so must choose them carefully. Likewise we are also asked to consider questions that we might like to answer against data that we have available, and so to consider some approaches to be provisional or hypothetical. The outcome is what Murphy (2009) termed an “exploratory” approach. Two key components of this are the obligation to ask what components are required and the concomittant freedom to discard those that are

A journey of a thousand miles begins with one small step

M. W. Ertsen et al.

[Title Page](#)

[Abstract](#)

[Introduction](#)

[Conclusions](#)

[References](#)

[Tables](#)

[Figures](#)

[⏪](#)

[⏩](#)

[◀](#)

[▶](#)

[Back](#)

[Close](#)

[Full Screen / Esc](#)

[Printer-friendly Version](#)

[Interactive Discussion](#)



A journey of a thousand miles begins with one small step

M. W. Ertsen et al.

[Title Page](#)

[Abstract](#)

[Introduction](#)

[Conclusions](#)

[References](#)

[Tables](#)

[Figures](#)

[⏪](#)

[⏩](#)

[◀](#)

[▶](#)

[Back](#)

[Close](#)

[Full Screen / Esc](#)

[Printer-friendly Version](#)

[Interactive Discussion](#)

not. The issue is not just what scale to use: it is what scale matters. Our contention in this paper is that identifying and understanding the arrangements that permitted the management of large-scale irrigation works, even those that persisted over centuries, requires modeling and understanding the small-scale, day-to-day operations and personal interactions upon which they were built. This effort, however, must be informed with the data from longer-term studies, for the longer-term dynamics provide the context within which our object of study, human agency, is acted out.

2 Agent-based models as the way forward?

Irrigation systems are spatial assemblies of built elements supplying crops with water. System's operation is a mixture of physical distribution facilities that bring water to fields and crops, and socio-political coordination between the different actors that use the water flows. Irrigated agriculture is more than simply managing volumes each month or season; irrigation is indeed typically about manipulating flows of water in time periods as short as hours and days – not just acre-feet per year, but liters per second. Such short-term manipulations do result in water balances and volumes on larger temporal and spatial scales. Using those lumped volumes and balances cannot be used, however, to derive the many small-scale manipulations of water flows that built the lumped results: reading back the detail from the general is impossible (Ertsen, 2010; Ertsen and Van der Spek, 2009).

Agent-based modeling (ABM) is particularly well-suited for investigating this domain. With their many entities, social and physical, their many interactions within a changing environment, and their resulting emergent properties, irrigation systems are typical of systems for which ABM yields fruitful analysis. The application of ABM by creating software agents to play the role of irrigation users and managers is a straightforward use; modeling the daily interactions of such agents together with the water fluxes promises better understanding of irrigation systems as anthropogenic landscapes. Those landscapes are the result of many individual activities – on their own or within entities like

HESSD

10, 14265–14304, 2013

A journey of a thousand miles begins with one small step

M. W. Ertsen et al.

[Title Page](#)

[Abstract](#)

[Introduction](#)

[Conclusions](#)

[References](#)

[Tables](#)

[Figures](#)

[⏪](#)

[⏩](#)

[◀](#)

[▶](#)

[Back](#)

[Close](#)

[Full Screen / Esc](#)

[Printer-friendly Version](#)

[Interactive Discussion](#)

of a downstream user – changing situations upstream. If this took only a few hours, analysis based on a time step of one day misses this action-reaction. However, social relations between users may be ruined: “If you steal my water today, I will hate you tomorrow”. Or, to put it more politely: “I may not want to maintain the canal in cooperation with you next month or year”. If this is our concern, then arguably we should not explain how irrigation-based societies collapsed after centuries or even millennia, but why these societies did not collapse each and every day.

Irrigation systems are highly dynamic systems, and human-induced patterns in irrigation often are idiosyncratic and unpredictable. However, they can be studied systematically. Recently, Ertsen (2010, 2012a, b) shows how interactions between humans, hydrology and hydraulics within irrigation systems create patterns of water use, and provides the basic modeling methodology to study these interactions. This approach is explicitly based on the physical processes creating surface and subsurface water fluxes. Although calculations and modeling applied so far are still basic, but the results suggest that developing a modeling-based approach that builds on actual flows in ancient irrigated environments will yield new understanding on how irrigation has sustained human civilization – or how it failed.

Substantial progress can be made by including detailed analysis of material conditions and changes related to human agency, especially accounting for the new material conditions of irrigation systems created by human actions. Human agency may be restricted by material conditions of irrigation system, with certain actions not possible or more difficult to achieve, but in reality humans still make the key decisions in water allocation, system management and irrigation development. Human agency, hydrological processes and hydraulic variables create irrigation together. Combined modeling of daily interactions between human agency and water fluxes will increase our understanding of irrigation systems as anthropogenic landscapes, and how they emerge from its socio-economic and environmental contexts.

Our discussion here presents three archaeological views of components of an irrigation system. Our examples are drawn from studies in the semi-arid American

A journey of a thousand miles begins with one small step

M. W. Ertsen et al.

[Title Page](#)[Abstract](#)[Introduction](#)[Conclusions](#)[References](#)[Tables](#)[Figures](#)[⏪](#)[⏩](#)[◀](#)[▶](#)[Back](#)[Close](#)[Full Screen / Esc](#)[Printer-friendly Version](#)[Interactive Discussion](#)

Southwest (Arizona), where irrigation has allowed farmers to cope with environmental constraints and grow crops for more than two millennia. The three views are presented as examples of long-term, medium-term, and short-term scales as revealed through archaeology and related studies. Ideally we would present a single, integrated picture that covers a single, unified example. In fact, the examples we choose here, though related, are separate. The progress of archaeological research could eventually provide a unified and complete picture of the entire region, but for now we present them as examples – including their methodological details – to support our contention that an integrated view is both possible and necessary for the rich understanding we seek of how irrigation systems, including the social relationships and institutions that arise from and support them, are shaped – or, better, are made and continually re-made via human agency – through time.

3 Climate reconstructions: the archaeological long-term view

Irrigation systems are situated in a specific hydrological environment. In this paper, we focus on the desert environment of Southern Arizona, an area rich in diverse plant life (Fish, 1989) and an area that supported some of the largest irrigation works in the prehistoric New World. The Hohokam built extensive canals that drew water more than 20 miles from the Salt and Gila Rivers, and persisted for nearly a millennium between 450 and 1450 AD (Fish and Fish, 2007). Archaeological research on these canals has been extensive, but has focused on more readily available information about large-scale canal networks (e.g., Howard, 1993). Investigation into the day-to-day operation of these systems at the field level has been limited or drawn from abstract scenarios (Murphy, 2009, 2012) rather than archaeological data, which have not previously been available. Below we will discuss what data sets are available and how these could be used for the detailed, short-term modeling efforts we propose.

We start with climatic issues. Irrigation is an attempt to modify the hydrological cycle and change its direct impact; the short-term impacts on irrigation and nature of

A journey of a thousand miles begins with one small step

M. W. Ertsen et al.

Title Page

Abstract

Introduction

Conclusions

References

Tables

Figures

⏪

⏩

◀

▶

Back

Close

Full Screen / Esc

Printer-friendly Version

Interactive Discussion

hydrological features are important to consider when studying irrigation management. One of the challenges of doing so is to determine the variability of hydrological features like temperature and available moisture. In other words, how to obtain a similar record of climatic variability as the measurements we have today? In Arizona, part of the answer would be found in tree-ring reconstructed data with a millennium span, of the kind that archaeologists in the US Southwest have been building for decades. Climate reconstructions based on tree-ring proxy records have been considerably utilized, in large part because of their relatively high resolution and reliability (Kohler, 2012).

For our discussion here we address reconstructions that apply to our general region of interest, in the southwestern portion of Arizona, and of a time period that covers a period of archaeological interest. In the selection of potential tree-ring indexed series, we considered four principles: (1) the tree-ring sites should be relatively close to the study area; (2) the tree-ring should be distinctively sensitive to climatic variables (temperature and precipitation); (3) the dataset should cover the main period one is interested in (which would be 450–1450 AD for the main Hohokam period); (4) and the data set should correlate with the study area. Based on the first three prerequisites, tree-ring data as reconstructed by Salzer and Kipfmueller (2005) will be discussed, which cover 1425 yr (570–1994 AD) annual precipitation (October–July) and 2262 yr (250 BC–1997 AD) annual mean-maximum temperature. Salzer and Kipfmueller (2005) calibrated precipitation series with data from NOAA Climate Division 2 (CD2), and temperature with data from Fort Valley research station. There are three tree-ring chronologies in the lower forest border of Arizona (Flagstaff, Canyon de Chelly, and Navajo Mountain) being used for precipitation reconstruction and one in San Francisco Peaks in Northern Arizona (Flagstaff) for temperature reconstruction, as shown in Fig. 1.

There are two problems, however, to be solved (see also Ni et al., 2002). First, the altitudes of the tree sites and the Hohokam main area differ considerably. All tree-ring sites are located at a high altitude of above 2000 m, while the study area is situated in low land of around 450 m a.s.l. The tree-ring sites belong to the CD2 zone,

A journey of a thousand miles begins with one small step

M. W. Ertsen et al.

[Title Page](#)[Abstract](#)[Introduction](#)[Conclusions](#)[References](#)[Tables](#)[Figures](#)[⏪](#)[⏩](#)[◀](#)[▶](#)[Back](#)[Close](#)[Full Screen / Esc](#)[Printer-friendly Version](#)[Interactive Discussion](#)

characterized by low temperature and relatively substantial rainfall, whereas the study area is within CD6, with a hot and dry climate. Secondly, the data derived from tree-ring chronologies are at annual-scale (October–July), but monthly data are required in calculation of maize productivity as maize is a seasonal crop. Hence, it is necessary to validate the reconstruction data and subsequently downscale them into month-scale. In the following, we first conduct data validation and statistical analysis on the tree sites between reconstructed data and observed data as well as the observed data between tree sites and study area. Then we develop a downscaling approach to process tree-ring reconstructed data without loss of the climatic variability.

As Fig. 2 shows, the series of tree-ring based reconstruction explains 69 % of the variance in precipitation over the 1896–1987 calibration period, and 46 % of the variance in temperature with a calibration period of 1909–2000. On the basis of the coefficient of determination (R^2) alone it indicates that precipitation reconstruction is relatively better than temperature reconstruction. However, the correlation between study area and tree-ring sites for the current period demonstrates an opposite result. Precipitation data from CD6 and temperature data from Chandler Heights are used as reference data of the study area. The correlation analysis in precipitation between CD6 and CD2 as well as temperature between Chandler Heights and Fort valley are done here. The correlation coefficient r in temperature reaches 0.99, which is higher than that in precipitation with a value of 0.83. It means both rainfall and temperature in our study area are positively correlated with these in the tree sites.

For downscaling, we show the Climate Factor (CF) method is an example (Chen et al., 2011). One of the advantages of the CF method is that it is able to conduct rapid impact assessment of climate change. This approach is commonly used to adjust the observed time series by adding the difference (for temperature) or multiplying the ratio (for precipitation) between future and present climates. In this case, CF could take account into climate difference between high altitude and low land, and attach the variability of climate variables in high altitude to that in low land in the progress of downscaling as equations show below.

A journey of a thousand miles begins with one small step

M. W. Ertsen et al.

Title Page

Abstract

Introduction

Conclusions

References

Tables

Figures

⏪

⏩

◀

▶

Back

Close

Full Screen / Esc

Printer-friendly Version

Interactive Discussion

$$T_{\text{dow,stu,m}} = T_{\text{obs,Cha,m}} + (\bar{T}_{\text{recon.,y}} - \bar{T}_{\text{obs,Fort,y}})$$

$$P_{\text{dow,stu,m}} = P_{\text{obs,CD6,m}} \times (\bar{P}_{\text{recon.,y}} / \bar{P}_{\text{obs,CD2,y}})$$

$T_{\text{dow,stu,m}}$ is downscaled monthly temperature for study area;

5 $T_{\text{obs,Cha,m}}$ is observed monthly temperature at Chandler Heights in reference period;

$\bar{T}_{\text{recon.,y}}$ is reconstructed yearly temperature based on tree-ring;

$\bar{T}_{\text{obs,Fort,y}}$ is observed yearly temperature at Fort valley research station in reference period;

$P_{\text{dow,stu,m}}$ is downscaled monthly precipitation for study area;

10 $P_{\text{obs,CD6,m}}$ is observed monthly temperature at CD6 in reference period;

$\bar{P}_{\text{recon.,y}}$ is tree-ring reconstructed yearly temperature;

$\bar{P}_{\text{obs,CD2,y}}$ is observed yearly temperature at CD2 in reference period.

The observed monthly data from our study area (Chandler Heights and CD6) are used as adjusting data. The reference periods cover 50 yr for both precipitation (1896–1945) and temperature (1909–1958). The adjusting series are randomly selected from the reference period. On the corresponding period, the difference or ratio between reconstruction and observation data of tree sites are calculated and given to the adjusting series.

20 Several statistical analyses are performed between simulated and observed series for temperature. As Fig. 3 (left graph) shows, there is a high positive correlation (r) between simulation and observation. The validation reduction of error statistic (RE) reaches 0.885 and 0.915 in mean-minimum temperature and mean-maximum temperature respectively. The high positive value indicates that the model performs a better reconstruction in whole simulation period than in calibration period. The root mean square differences (RMSD) between simulation and observation are 2.34 and 2.58 respectively.

25 The simulated series of precipitation are validated by comparing its month-distribution percent with that of observation. Firstly, both measured and simulated

A journey of a thousand miles begins with one small step

M. W. Ertsen et al.

Title Page

Abstract

Introduction

Conclusions

References

Tables

Figures

⏪

⏩

◀

▶

Back

Close

Full Screen / Esc

Printer-friendly Version

Interactive Discussion

Canals are considered as technical systems on one side, with their own temporalities, from their construction, maintenance to their abandonment. On the other side, their fill records environmental fluctuations (floods, water stagnation, rhythmic flow to down-cutting events and fluvial morphological change). Depending on the initial research question, irrigation structures and systems can be perceived at various spatial scales (main, secondary or tertiary canal; irrigation system; geomorphic unit) and temporal scales (short-term events; phases of cultural stability/breakdown). As the aim of this paper is to understand short-term socio-environmental interactions, we will focus here on the methodological keys to study individual structures in the field and laboratory. One main Hohokam canal located along the Salt River in the semi-arid Phoenix Basin will be used as an example (Fig. 4a).

Aerial photographs and old maps usually provide information on the location of past irrigation systems. In the Phoenix basin in Arizona, twenty years of salvage archaeology have enabled researchers to build a massive database of irrigation systems (Fig. 4a) (Howard and Huckleberry, 1991). The main Canal System 12 (CS12) (Fig. 4a and b), which is the most downstream system of the valley, was studied in 2007 in the framework of a salvage archaeology project directed by Soil System Inc. at the site of Cashion, a Hohokam village occupied from 7th to the 12th century AD. CS12 was encountered 3 miles downstream from its head gates, nearly 2.5 m below the surface, and four north-south trenches distant from about 100 m were dug perpendicularly to its alignment in order to study its fill and reconstruct its functional history (Fig. 4b). The fill was very well preserved, and three superposed canals were identified, the base of the bottom one being separated from the upper one by more than one meter of sediments (Fig. 5). Once the canal profiles were exposed, systematic criteria were described: canal shape, description of the sedimentary fill (texture, structure, color, inclusions, etc), visible traces of human management (canal curing based on stratigraphic unconformities (Fig. 4c), stone, earth walls or fine material on the sides and bottom of the feature to protect it from erosion).

A journey of a thousand miles begins with one small step

M. W. Ertsen et al.

[Title Page](#)

[Abstract](#)

[Introduction](#)

[Conclusions](#)

[References](#)

[Tables](#)

[Figures](#)

[⏪](#)

[⏩](#)

[◀](#)

[▶](#)

[Back](#)

[Close](#)

[Full Screen / Esc](#)

[Printer-friendly Version](#)

[Interactive Discussion](#)

First interpretations, such as the occurrence of flooding events, episodes of water stagnation, local erosion or canal abandonment, traditionally identified based on texture (sand vs. clay), sediment structure and sorting (graded deposits vs. weakly-sorted sediments, inclusions) need to be put forward with precaution. First, the canal studied should be replaced within its network. Small lateral canals located downstream of the system will record different information than canals studied closer to their head gates. Second, sedimentary signatures might have multiple origins. The origin of this difference (natural/anthropic) is difficult to estimate but numerous studies conducted on connected main, secondary, tertiary canals and associated irrigated fields can provide a complete reconstruction of human management and the significance of flow at the scale of a system (e.g., Purdue et al., 2010, 2013). Also, building references in historic and modern canals, for which we have better chronological frames as well as written data on human activity and fluvial dynamics, could help better discuss this issue of equifinality (e.g., Huckleberry, 1999; Purdue 2011).

Irrigation structures need to be dated and replaced in a hydrological and cultural context. This is probably the most complex step, even more when high resolution data on flow is needed. As irrigation structures start to fill with sediments right after their construction, dates processed at the bottom of the structure will provide an idea of when the structure was built, while a date in the upper part of the fill will indicate when the structure was abandoned. However, canals are anthropic structures, frequently maintained and curated, and parts of the fill are often removed. Ideal situations occur when a structure is continuously used, but when multiple episodes of cleaning are observed it is necessary to process as many dates as possible to frame these events. Archaeological material such as sherds identified in primary position (identification based on their external aspect) can provide information on when the canal was in use. However, as structures are often encountered away for habitats, absolute dating (radiocarbon dating on organic material or Optical Luminescence Dating on quartz grains) (Berger et al., 2004; Huckleberry and Rittenour, 2013) should be preferentially selected. Three radiocarbon dates were processed in Trench 1 (Fig. 5). Results show that the first canal was

A journey of a thousand miles begins with one small step

M. W. Ertsen et al.

[Title Page](#)[Abstract](#)[Introduction](#)[Conclusions](#)[References](#)[Tables](#)[Figures](#)[⏪](#)[⏩](#)[◀](#)[▶](#)[Back](#)[Close](#)[Full Screen / Esc](#)[Printer-friendly Version](#)[Interactive Discussion](#)

deposits in T 2 followed by canal cleaning. Canal maintenance also occurred as shown by the ash deposits in T 1 (SU 7) indicating in situ burning to destroy the vegetation. The third period (SU 8–10 in T 1; 8th–9th century AD) is composed of prismatic clay and graded clayey silts (Fig. 6c, SU 8), rich in humic organic matter and charcoals, indicating episodes of water stagnation, as well as low flow and evaporation. Eolian sand has been encountered in T 2 which could point towards drier conditions. The canal then seems abandoned up until the mid-12th century and filled with slopewash deposits and trash (observation of plurim calcium carbonate nodules from the substratum; charcoals, ashes, organic matter and calcium oxalate crystals usually found in local vegetation which points toward dumped food remains in T 2) (Fig. 6d, SU 16). We put forward that the abandonment of the canal could be the results of shifting hydrological dynamics (e.g., down-cutting event) (Phillips et al., 2004; Purdue, 2011; Huckleberry et al., 2013).

The second major canal (Period 4, SU 16–23 in T 1), identical in size to the first one, was in use between the 12th and 13th century AD. Coarse silts rich in charcoal and presenting a massive to vughy structure indicate fast sedimentation as well as permanent moist conditions (Fig. 6e, SU 17). The canal seems maintained as shown by the layer of ashes in T 2 and the earth protection on the side of the feature in T 1 (SU 18, 19, 20), but no visible cleaning event has been recorded. The bioturbated structure in the upper part of the feature (SU 23), as well as the in situ development of vegetation indicates reduced flow and even canal abandonment, contemporaneously to the abandonment of Cashion site. However, a third canal is rebuilt fast and connected to the terminal part of a canal belonging to Canal System 2, Canal Alamo (Fig. 6a). In use during the 13th century, this canal is a much smaller in size and is filled with graded as well as weakly-sorted coarse silts to sands. The occurrence of soil aggregates and the lack of soil development is an indicator of fast sedimentation, contrasted conditions and soil erosion during that period (Fig. 6f, SU 39). The canal is cleaned, at least once. Its upper part is composed of coarse silts with a sub-angular structure suggesting post-abandonment flood deposits.

A journey of a thousand miles begins with one small stepM. W. Ertsen et al.

[Title Page](#)[Abstract](#)[Introduction](#)[Conclusions](#)[References](#)[Tables](#)[Figures](#)[⏪](#)[⏩](#)[◀](#)[▶](#)[Back](#)[Close](#)[Full Screen / Esc](#)[Printer-friendly Version](#)[Interactive Discussion](#)

This detailed analysis suggests that the fill of CS12 is mainly characterized by rhythmic deposition, despite it being the most downstream system in the lower Salt River valley. Two interesting events have been recorded. The first one is the canal abandonment during the Sedentary Period, when massive flooding, widening and down-cutting occurred in the lower Salt River valley (Purdue, 2011; Phillips et al., 2004; Onken et al., 2004; Huckleberry et al., 2013). The second one is its connection to Canal System 2 after that, suggesting difficulties in diverting water in downstream systems, but cooperation to actually connect independent irrigation systems. The observation of ash deposits, cleaning events and lateral protection structure were part of the regular maintenance. From a methodological standpoint, the geo-archaeological approach provides very precise information on short-term to middle-term environmental conditions in past irrigation canals. This information can help to conduct better simulations on irrigation system management (e.g., change in slope through time; evolution of flow in main, distribution and lateral canals; irrigation management in fields). Systematic studies allow for the creation of a typology of canal fills and will provide local to regional data to help validate agent-based models.

5 Reconstructing irrigation at Las Capas: the short-term view

Our short-term example is the site of Las Capas, situated along the Santa Cruz River in modern Tucson. Las Capas is earlier than the far larger irrigation works to the north. Occupied from about 2100 BCE until perhaps 500 BCE (Mabry, 2008a), the site is noteworthy for its remarkable preservation: flood events deposited layers of silt that sealed some occupation layers and preserved them with minimal disturbance (Wöcherl, 2008). One set of excavations conducted by Desert Archaeology, Inc. (Mabry, 2008b; Vint, 2009), and others has revealed a detailed picture of irrigation structures, fields, and even individual planting holes; this rich picture also includes construction techniques: lateral canals and field berms were constructed by digging sediment from either side

and piling the dirt to create banks and field boundaries (J. Vint, personal communication, 2012).

Figure 7 shows the site's location alongside the Tucson Mountains and the Santa Cruz River, and the reconstruction, in white paint, of the outlines of fields and canals visible to archaeologists. Figure 8 shows a drawing of the canals and fields found. The features shown date from roughly 900 BC to between 800 and 750 BC. This detail allows construction of water flow simulations at the day-to-day scale we hope to examine in a way that previous examinations of larger canals do not. Based on available data from the site, a model setup was designed with the SOBEK Hydraulic Modeling package (see references) with one canal (called main in this simulation although it is fairly small), seven lateral canals and four fields per lateral (Fig. 9). At Las Capas the larger distribution canals average 1.2 m wide and 0.23 to 0.30 m deep and have a parabolic cross section yielding a functional water depth of 0.20 to 0.25 m. The lateral canals at Las Capas average 1.0–1.1 m wide and 0.15 m deep, with a functional water depth of ca. 5 cm (J. Vint, personal communication, 2012).

The canals in the model have a bed width of 0.8 m, a side slope of 1 and a design water depth of 0.20, which yields a width at the design water level of 1.2 m. Fields at Las Capas are small, approximately 5 by 5 to 10 by 10 m, and are bounded by berms circa 10–15 cm high (J. Vint, personal communication, 2012). In the model, fields are modeled with dimensions 10 by 15 m (each representing several smaller fields) with a design water depth of 10 cm. Several water control scenarios were tested, after confirming that without control water availability in the downstream areas of the system – both in the main as along laterals – would be insufficient to reach the required 10 cm of water depth on every field. Controls were modeled as weirs of 1 m width that could be opened or closed depending on the control action.

Typically, a control action was defined as “move the weir once in the target field a water depth of 10 cm is reached”. Control could be on three levels:

HESSD

10, 14265–14304, 2013

A journey of a thousand miles begins with one small step

M. W. Ertsen et al.

Title Page

Abstract

Introduction

Conclusions

References

Tables

Figures

⏪

⏩

◀

▶

Back

Close

Full Screen / Esc

Printer-friendly Version

Interactive Discussion



HESSD

10, 14265–14304, 2013

A journey of a thousand miles begins with one small step

M. W. Ertsen et al.

[Title Page](#)

[Abstract](#)

[Introduction](#)

[Conclusions](#)

[References](#)

[Tables](#)

[Figures](#)

[⏪](#)

[⏩](#)

[◀](#)

[▶](#)

[Back](#)

[Close](#)

[Full Screen / Esc](#)

[Printer-friendly Version](#)

[Interactive Discussion](#)

- Main level (A in Fig. 9): all the water moves to the lateral and only if all fields along the lateral have water depths of 10 cm is water allowed to flow along the main to the next lateral.
- Lateral level (B in Fig. 9): all the water moves to one field along the lateral, and only if that field has a water depth of 10 cm is water allowed to flow along the lateral to the next field.
- Field level (C in Fig. 9): fields are closed once a water depth of 10 cm is reached.

Control actions were tested on their own and in combinations. Six scenarios were tested, with five (Tables 1 and 2) starting irrigation upstream in the system working their way down. One scenario (Table 3) starts irrigating downstream and moves up. The model checked target levels every four minutes, representing expected continuous interaction between irrigators within a small area. Each control scenario was tested with two inflow scenarios. In the first, an upstream boundary condition is imposed with a constant flow depth of 20 cm; this constant water depth represents an average inflow of 20 to 25 Ls⁻¹. In the second, fluctuating inflow is specified as an upstream boundary of changing water levels in random order; this order is the same for all scenarios.

The results per scenario were expressed in the time of arrival of water at the most downstream field for each lateral in hours (Tables 1 to 3). As in most scenarios fields remained uncontrolled, total irrigation time was not a major determining factor. For those scenarios that fields could be closed after reaching the target water depth of 10 cm, arrival and closing times per field were taken. Assuming a constant inflow of 20 Ls⁻¹ and a volume to be covered with 10 cm of water everywhere in the fields, total irrigation time (calculated simply by taking the total volume of water needed and dividing this by the delivery rate of 20 Ls⁻¹) would be a little less than 6 h. When the volume of water required includes the volume required to fill the canals as well, a similar basic volumetric computation adds another hour to the irrigation time. Therefore a total irrigation time of some 7 h for the 28 fields is a useful baseline, reference time.

HESSD

10, 14265–14304, 2013

A journey of a thousand miles begins with one small step

M. W. Ertsen et al.

[Title Page](#)[Abstract](#)[Introduction](#)[Conclusions](#)[References](#)[Tables](#)[Figures](#)[⏪](#)[⏩](#)[◀](#)[▶](#)[Back](#)[Close](#)[Full Screen / Esc](#)[Printer-friendly Version](#)[Interactive Discussion](#)

The modeling setup was obviously very basic and we should not draw anything more than preliminary conclusions based on a comparison between the scenarios, but nevertheless some first remarks can be made upon which directions for further study can be defined. First, a baseline order of magnitude calculation is in order. Tables 1, 2 and 3 show that when applying control, total irrigation times for these 28 fields were reduced to some 5 to 6 h. In other words, applying control to concentrate flows on particular parts of the system before allowing irrigating other areas seems to work. Total irrigation time decreases; obviously total management effort increases. The results also suggest that fluctuations in inflow appear to have a large impact on total irrigation time and can bring total time up to almost 10 h. This suggests that one needs to be able to position a small-scale system like this within its larger spatial context. Another issue to study further would be whether in systems like these fluctuations in inflow – if present – were caused mainly by changing natural inflows or by human agency elsewhere in the irrigated area.

Taking a closer look between the types of control yields another interesting issue. The three scenarios controlling water flows on canal level only (Table 1) do not yield very different results. All three controls – on main, lateral or both – need something like six hours with steady inflow and some three hours more with fluctuating inflow. However, control in the canals combined with control of fields (Table 2) results in some different results. Both scenarios in this category keep irrigation times for steady and fluctuating inflow more or less stable. However, full control of flows – water is only allowed to flow to a next field and/or canal once a field has reached target water level – appears to result in larger irrigation times compared to a control scenario where only inflow into laterals and fields is controlled, but not the flow along a lateral. Apparently it takes time for the water to reach enough head.

These results may indicate that it is favorable in terms of irrigation times to irrigate a field and bring water further downstream even when a field upstream has not reached its target level yet. If this is correct – and not a creation of the modeling setup too much – the hydraulic characteristics of the control scenario may ease the need for

A journey of a thousand miles begins with one small step

M. W. Ertsen et al.

Title Page

Abstract

Introduction

Conclusions

References

Tables

Figures

⏪

⏩

◀

▶

Back

Close

Full Screen / Esc

Printer-friendly Version

Interactive Discussion

full coordination between fields and irrigators. It is also an indication that the canals are large compared to the fields. Finally, in some irrigation systems, the order of irrigation is sometimes turned around from the natural preferential situation of gravity in the sense that downstream users are allowed to irrigate first before upstream users can do so.

5 The scenario checking whether this yields shorter irrigation times – especially with fluctuation – shows no clear differences from the upstream scenario. Irrigation times with fluctuations are also much longer. On this scale, the order of irrigation seems to have less impact than the type of water control that is applied. Although these first results are preliminary, they indicate that coordination between laterals in terms of
10 when to open and close them combined with individual decisions on field level when to close fields after reaching a target water depth may have been the control scenario with higher benefits in terms of stability and lower demands in terms of coordinating actions required.

6 The long and the short: which view to choose?

15 The three views given here – long-term climatic reconstruction; middle-term pattern of canal construction, use, repair, and abandonment; and the short-term interplay of canal operation and management – are separate examples from times and places that are close to one another but cannot be fully integrated; we offer them instead as examples of the pictures of irrigation that archaeological studies can give. Our point,
20 however, is that these three views, are not – and indeed cannot be – incompatible: in the real progress of events they all played out simultaneously. The daily management of fields was conducted within the larger context of which canals were operational, which were in need of repair, which had been abandoned but could be reused, and whether new canals were needed. This, in turn, played out against a longer backdrop
25 of shifting water supply: solutions that made sense when wet years were rare might be less useful when wet years were more common, and the search for the best solution meant chasing nature's moving target. All of these components are revealed through

archaeological means; the picture is broken and incomplete across time and space, but as more data are acquired and organized it fills in and sharpens.

Our question here is whether the modeling effort can select the appropriate scale at which to approach the dynamics under study. Murphy (2009) has shown that a simple interaction between upstream and downstream field systems both drawing from a single water source can lead to complex dynamics that, in turn, might be deeply shaped by water supply, and thus be markedly different in wet vs. dry years; this kind of game in turn would have impacted the way that the fields were fed, changing the hydraulic dynamics, which would presumably have impacted the social dynamics among the field managers. If, as the simulations described here show, different patterns of filling fields lead to different efficiencies, then the negotiations of how the fields were watered – the perennial questions of who gets the water when – would have been affected as well. The middle-term shifts in infrastructure would have meant that no solution would have served permanently.

This integrated picture argues for a modeling effort that begins with the input data provided by medium- and long-term views, but that specifically uses these to address the small-scale: the formal and informal institutions that we believed would have maintained these systems would have grown out of the shifting dynamics at the tightest scales. Our modeling must capture this. From this we can hope to apply the lessons gained from the long-term archaeological record to the present, where the day-to-day scale is, of course, far more salient. With the objective of better understanding human agency through modeling, this paper puts forward the relevance of combining hydrological, geographical, archaeological, and social studies when studying water systems. Human agency articulates itself around short-term socio-environmental dynamics as agents and networks continuously interact. Similar concepts related to the co-evolution of humans and their environment has been developed by other disciplines and the importance of pluri-disciplinary approaches is not new. However, crossing disciplinary and methodological barriers is not easy. On the other hand, the rapid development of agent-based modeling, which aims to understand human behaviors, opens new

A journey of a thousand miles begins with one small step

M. W. Ertsen et al.

Title Page

Abstract

Introduction

Conclusions

References

Tables

Figures



Back

Close

Full Screen / Esc

Printer-friendly Version

Interactive Discussion



research perspectives and requires inter-disciplinarity. Because we argue that models rely on a bottom up principle, they need to be supplied and validated by observed data from various fields of research. Therefore, data on irrigation management, hydrology and high resolution soil data will provide a relevant basis for modeling.

5 This type of socio-hydrology recognizes that organisms like humans change their environment; the famous beavers build dams, termites build huge mounds. On its own turn, environment changes organisms; selective pressures from an environment have an influence on survival strategies of those living within that environment (Nelson et al., 2010). Such a process of niche construction (Kendall et al., 2011) includes the bidirectional nature of interactions between material environment and social arrangements, in order to capture how humans change their environment, and how subsequent environmental changes alter societal functioning. This calls for much more studies providing empirical evidence for co-evolving social/economic and environmental systems – e.g., studies that take a historical or archaeological approach, or use social science methods to assess how communities/societies create and respond to environmental change.

15 The full approach that we envision, one that places agent-based models in simulations that can integrate data from a range of disparate sources and explore alternatives at a range of scale, is not yet developed. The software, and the scientific strategy for using such software, remain possibilities but not yet complete. Our concern is that traditional approaches to modeling human social action in social-ecological contexts avoid the central issues of human agency; our hope is that future examples will build on the position here, and the goal of understanding how human agency shapes relationships and institutions in contexts such as irrigation will soon be within our reach.

25 *Acknowledgements.* Authors would like to thank the School of Human Evolution and Social Change and well as the School of Sustainability at Arizona State University (Tempe, Arizona) for their support in the collection of the data. Louise Purdue would also like to thank Soil System Inc. (Paleowest) and the GEOPHEN laboratory (University of Caen Basse-Normandie, France) for the support they provided in collecting and preparing the data as well as the Fyssen Foundation for its financial support in the development of this project. Fieldwork at the Las Capas site in 30 2008 and 2009 was undertaken by Desert Archaeology, Inc, and was funded by Pima County,

A journey of a thousand miles begins with one small step

M. W. Ertsen et al.

Title Page

Abstract

Introduction

Conclusions

References

Tables

Figures



Back

Close

Full Screen / Esc

Printer-friendly Version

Interactive Discussion



Arizona, bonds as part of the Ina Road Regional Waste-water Reclamation Facility Upgrade Project. All photos and source data are courtesy of Desert Archaeology, Inc., Tucson, Arizona, and we gratefully acknowledge the opportunity to work with the data their excavations have collected and the effort they made in providing the data in a useful format. Special thanks are due to Desert Archaeology's James Vint and Fred Nials; without their contributions of materials, data, and insight this project would not have been possible. All errors are our own.

References

- Altaweel, M.: Investigating agricultural sustainability and strategies in northern Mesopotamia: results produced using a socio-ecological modeling approach, *J. Archeol. Sci.*, 35, 1–15, 2007.
- Berger, J.-F.: Les fossés bordiers historiques et l'histoire agraire rhodanienne, *Etud. Rurales*, 153–154, 59–90, 2000.
- Berger, G. W., Henderson, T. K., Banerjee, D., and Nials, F. L.: Photonic dating of prehistoric irrigation canals at Phoenix, Arizona, USA, *Geoarchaeology*, 19, 1–19, 2004.
- Chen, J., Brissette, F. P., and Leconte, R.: Uncertainty of downscaling method in quantifying the impact of climate change on hydrology, *J. Hydrol.*, 401, 190–202, 2011.
- Courty, M. A., Goldberg, P., and Macphail, R. I.: *Soils and micromorphology in archaeology*, in: Cambridge Manuals in Archaeology, Cambridge University Press, Cambridge, 1989.
- Ertsen, M. W.: Structuring properties of irrigation systems. Understanding relations between humans and hydraulics through modeling, *Water History*, 2, 165–183, 2010.
- Ertsen, M. W.: Modelling human agency in ancient irrigation, in: XXXIle Rencontres Internationales d'Archéologie et d'Histoire d'Antibes "Variabilites environnementales, mutations sociales?: Nature, Intensités, Échelles et Temporalités des changements", edited by: Bertonecello, F. and Braemer, F., Editions APCDA, Antibes, 199–209, 2012a.
- Ertsen, M. W.: Irrigation and landscape: an interdisciplinary approach, in: Landscape Archaeology between Art and Science – From a Multi- to an Interdisciplinary Approach, edited by: Kluiving, S. J. and Guttman-Bond, E. B., Landscape & Heritage Series, Amsterdam University Press, 45–58, 2012b.

A journey of a thousand miles begins with one small step

M. W. Ertsen et al.

Title Page

Abstract

Introduction

Conclusions

References

Tables

Figures

⏪

⏩

◀

▶

Back

Close

Full Screen / Esc

Printer-friendly Version

Interactive Discussion



A journey of a thousand miles begins with one small step

M. W. Ertsen et al.

[Title Page](#)

[Abstract](#)

[Introduction](#)

[Conclusions](#)

[References](#)

[Tables](#)

[Figures](#)

[⏪](#)

[⏩](#)

[◀](#)

[▶](#)

[Back](#)

[Close](#)

[Full Screen / Esc](#)

[Printer-friendly Version](#)

[Interactive Discussion](#)

- 5 Ertsen, M. W. and Van der Spek, J.: Modeling an irrigation ditch opens up the world. Hydrology and hydraulics of an ancient irrigation system in Peru, Phys. Chem. Earth, 34, 176–191, 2009.
- 10 Fish, P. R.: The Hohokam: 1000 years of prehistory in the Sonoran Desert, in: Dynamics of Southwest Prehistory, edited by: Cordell, L. S. and Gumerman, G. J., Smithsonian Institution Press, Washington, D.C., 19–63, 1989.
- Fish, S. K. and Fish, P. R.: The Hohokam millennium, in: The Hohokam Millennium, edited by: Fish, S. K. and Fish, P. R., School for Advanced Research Press, Santa Fe, New Mexico, 1–11, 2007.
- 15 Gentelle, P.: Le croissant fertile, Le monde de la Bible et Terre Sainte, 15, 4–8, 1980.
- Graybill, D. A., Gregory, D. A., Funkhouser, G. S., and Nials, F. L.: Long-term streamflow reconstructions, river channel morphology, and aboriginal irrigation systems along the Salt and Gila Rivers, in: Environmental Change and Human Adaptation in the Ancient Southwest, edited by: Dean, J. S. and Doyel, D. E., University of Utah Press, Salt Lake City, 69–123, 2006.
- 20 Howard, J. B.: A paleohydraulic approach to examining agricultural intensification in Hohokam irrigation systems, in: Research in Economic Anthropology, Supplement, 7 pp., Emerald, Bingley, 263–324, 1993.
- Howard, J. B. and Huckleberry, G.: The operation and evolution of an irrigation system: the East Papago Canal stud., Soil Systems Publication in Archaeology 18, Phoenix, 1991.
- Huckleberry, G.: Stratigraphic identification of destructive floods in relict canals: a case study from the Middle Gila River, Arizona, the Kiva, 65, 7–33, 1999.
- 25 Huckleberry, G. and Rittenour, T.: Combining radiocarbon and single-grain optically stimulated luminescence methods to accurately date pre-ceramic irrigation canals, Tucson, Arizona, J. Archaeol. Sci., 41, 156–170, 2013.
- Huckleberry, G., Onken, J., Graves, W., and Wegener, R.: Climatic, geomorphic, and archaeological implications of a late Quaternary alluvial chronology the lower Salt River, Arizona, USA, Geomorphology, 185, 39–53, 2013.
- 30 Hunt, E. and Hunt, R. C.: Irrigation, conflict, and politics: a Mexican case, in: Irrigation's Impact on Society, edited by: Downing, T. and MacGuire, G., University of Arizona Press, Tucson, 129–157, 1973.
- Kendal, J., Tehrani, J. J., and Odling-Smee: Human niche construction in interdisciplinary focus, Philos. T. Roy. Soc. B, 366, 785–792, 2011.

A journey of a thousand miles begins with one small step

M. W. Ertsen et al.

[Title Page](#)

[Abstract](#)

[Introduction](#)

[Conclusions](#)

[References](#)

[Tables](#)

[Figures](#)

[⏪](#)

[⏩](#)

[◀](#)

[▶](#)

[Back](#)

[Close](#)

[Full Screen / Esc](#)

[Printer-friendly Version](#)

[Interactive Discussion](#)

- Kohler, T. A. (Ed.): Modeling agricultural productivity and farming effort, in: Emergence and Collapse of Early Villages: Models of Central Mesa Verde Archaeology, University of California Press, Berkeley, Los Angeles, 2012.
- Latour, B.: Reassembling the Social: An Introduction to Actor Network Theory, Oxford University Press, Oxford, 2005.
- Mabry, J. B.: Chronology, in: Las Capas: Early Irrigation and Sedentism in a Southwestern Floodplain, Center for Desert Archaeology, Tucson, 55–76, 2008a.
- Mabry, J. B. (Ed.): Las Capas: Early Irrigation and Sedentism in a Southwestern Floodplain, Anthropological Papers No. 28, Center for Desert Archaeology, Tucson, 2008b.
- Midvale, F.: The prehistoric irrigation of the Salt River valley, 4th Edn., Map on file, Department of Anthropology, Arizona State University, Tempe, 1966.
- Murphy, J. T.: Exploring complexity in the past: the Hohokam water management simulation, Ph.D. Dissertation, Department of Anthropology, University of Arizona, 2009.
- Murphy, J. T.: Exploring complexity with the Hohokam water management simulation: a middle way for archaeological modeling, *Ecol. Model.*, 241, 15–29, 2012.
- Nelson, M. C., Kintigh, K., Abbott, D. R., and Anderies, J. M.: The cross-scale interplay between social and biophysical context and the vulnerability of irrigation-dependent societies: archaeology's long-term perspective, *Ecol. Soc.*, 15, 31, 2010.
- Ni, F., Cavazos, T., Hughes, M. K., Comrie, A. C., and Funkhouser, G.: Cool-season precipitation in the southwestern USA since AD 1000: comparison of linear and nonlinear techniques for reconstruction, *Int. J. Climatol.*, 22, 1645–1662, 2002.
- Onken, J., Waters, M. R., and Homburg, J. A.: Geoarchaeological assessment for the Tres Rios Project, Maricopa County, Arizona, Statistical Research Inc., Technical Report 03-68, Redlands, California, 2004.
- Pande, S. and Ertsen, M.: Endogenous change: on cooperation and water in ancient history, *Hydrol. Earth Syst. Sci. Discuss.*, 10, 4829–4868, doi:10.5194/hessd-10-4829-2013, 2013.
- Phillips, B. G., Gibson, A., Miller, A., Droz, M. S., and Walker, L. A.: Paleoennvironnement, in: Life on the Lehi Terrace: The Archaeology of the Red Mountain Freeway between State Route 87 and Gilbert Road, edited by: Powell, S. and Boston, R. L., Archaeological Consulting Services Cultural Resources Report 135, Tempe, 11–47, 2004.

HESSD

10, 14265–14304, 2013

A journey of a thousand miles begins with one small step

M. W. Ertsen et al.

[Title Page](#)[Abstract](#)[Introduction](#)[Conclusions](#)[References](#)[Tables](#)[Figures](#)[⏪](#)[⏩](#)[◀](#)[▶](#)[Back](#)[Close](#)[Full Screen / Esc](#)[Printer-friendly Version](#)[Interactive Discussion](#)

Purdue, L.: Dynamique des paysages agraires et gestion de l'eau dans le bassin semi-désertique de Phoenix, Arizona de la Préhistoire à l'époque modern, Unpublished Ph. D. doctoral in Environmental Archaeology, University of Nice Sophia Antipolis, France, 2011.

5 Purdue, L., Miles, W., Woodson, K., Darling, A., and Berger, J.-F.: Micromorphological study of irrigation canal sediments: landscape evolution and hydraulic management in the middle Gila River valley (Phoenix Basin, Arizona) during the Hohokam occupation, *Quatern. Int.*, 216, 129–144, 2010.

10 Purdue, L., Miles, W., Wright, D., Palacios Fast, M., Phillips, B., and Woodson, K.: Prehistoric agrosystems of Central Arizona: a paleoenvironmental approach to the study of Hohokam irrigated fields and canals, in preparation, 2013.

Salzer, M. W. and Kipfmueller, K. F.: Reconstructed temperature and precipitation on a millennial timescale from tree-rings in the Southern Colorado Plateau, USA, *Climatic Change*, 70, 465–487, 2005.

15 Sobek Suite: <http://www.deltaressystems.com/hydro/product/108282/sobek-suite>, last access: 24 September 2013.

Vint, J. B.: Completion of Compliance-related Archaeological Fieldwork at the Site of Las Capas (AZ AA:12:111 [ASM]) and Related Canals (AZ AA:12:753 [ASM]) on the Grounds of the Ina Road Regional Wastewater Reclamation Facility, Pima County, Arizona, MS on file at Desert Archaeology Inc., Tucson, Arizona, 2009.

20 Wöcherl, H.: Natural site formation processes and archaeological interpretation, in: Las Capas: Early Irrigation and Sedentism in a Southwestern Floodplain, *Anthropological Papers No. 28*, Center for Desert Archaeology, Tucson, 77–94, 2008.

HESSD

10, 14265–14304, 2013

A journey of a thousand miles begins with one small step

M. W. Ertsen et al.

Title Page

Abstract

Introduction

Conclusions

References

Tables

Figures

⏪

⏩

◀

▶

Back

Close

Full Screen / Esc

Printer-friendly Version

Interactive Discussion

Table 3. Model results for downstream control scenarios: water arriving at laterals after $x \text{ h min}^{-1}$.

Lateral	Downstream main			
	Steady		Fluctuating	
	Start	End	Start	End
1	5.27	5.45	8.07	8.29
2	4.50	5.13	7.40	8.09
3	4.08	4.33	7.11	7.37
4	3.26	3.49	6.30	6.53
5	2.35	3.05	5.39	6.09
6	1.45	2.13	4.04	5.17
7	0.39	1.21	1.33	3.17

HESSD

10, 14265–14304, 2013

A journey of a thousand miles begins with one small step

M. W. Ertsen et al.

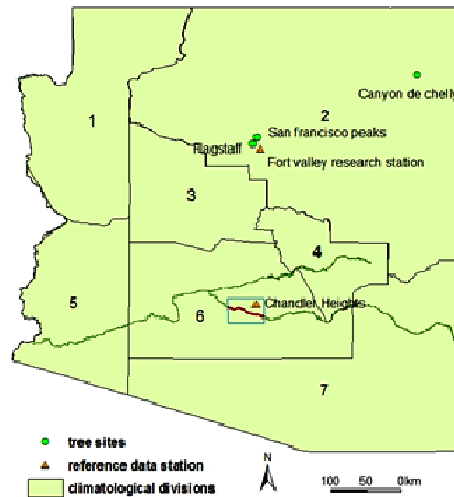


Fig. 1. Location of sites in Arizona for which tree-ring chronology is available.

Title Page

Abstract

Introduction

Conclusions

References

Tables

Figures

⏪

⏩

◀

▶

Back

Close

Full Screen / Esc

Printer-friendly Version

Interactive Discussion



A journey of a
thousand miles
begins with one
small step

M. W. Ertsen et al.

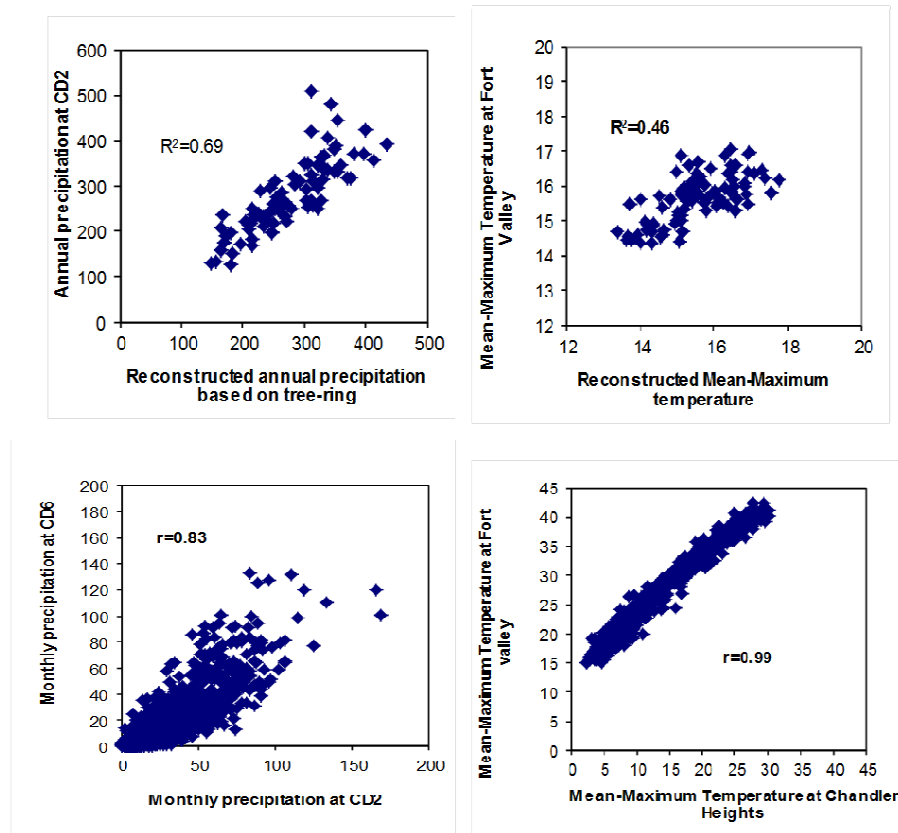


Fig. 2. Statistical analysis on tree sites between observed and reconstructed temperature and precipitation, as well as observed data between tree sites and study area (data sources: NOAA).

Title Page

Abstract

Introduction

Conclusions

References

Tables

Figures

⏪

⏩

◀

▶

Back

Close

Full Screen / Esc

Printer-friendly Version

Interactive Discussion

A journey of a thousand miles begins with one small step

M. W. Ertsen et al.

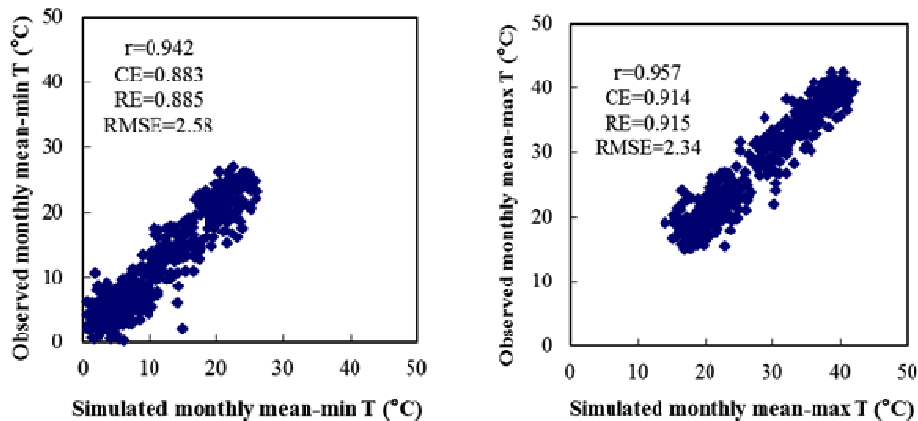


Fig. 3. Statistical validation of reconstructed temperatures based on the correlation between simulated and observed temperatures.

[Title Page](#)[Abstract](#)[Introduction](#)[Conclusions](#)[References](#)[Tables](#)[Figures](#)[⏪](#)[⏩](#)[◀](#)[▶](#)[Back](#)[Close](#)[Full Screen / Esc](#)[Printer-friendly Version](#)[Interactive Discussion](#)

A journey of a thousand miles begins with one small step

M. W. Ertsen et al.

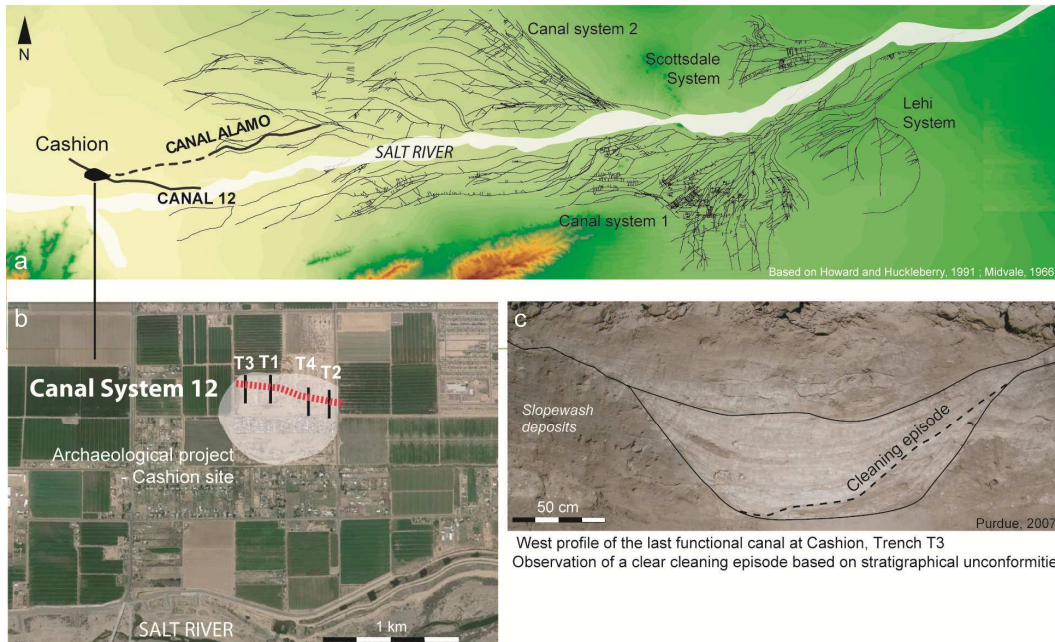


Fig. 4. (a) Irrigation systems along the Lower Salt River valley (Phoenix, Arizona) with location of Cashion site, (b) zoom on the spatial extension of the archaeological project with Canal System 12 and the four trenches dug perpendicular to the canals alignment (Google Earth, 2013), (c) photograph of the west profile of the upper and last canal in use. Note the stratigraphic unconformity that indicates a cleaning episode.

[Title Page](#)
[Abstract](#)
[Introduction](#)
[Conclusions](#)
[References](#)
[Tables](#)
[Figures](#)
[Back](#)
[Close](#)
[Full Screen / Esc](#)
[Printer-friendly Version](#)
[Interactive Discussion](#)

A journey of a thousand miles begins with one small step

M. W. Ertsen et al.

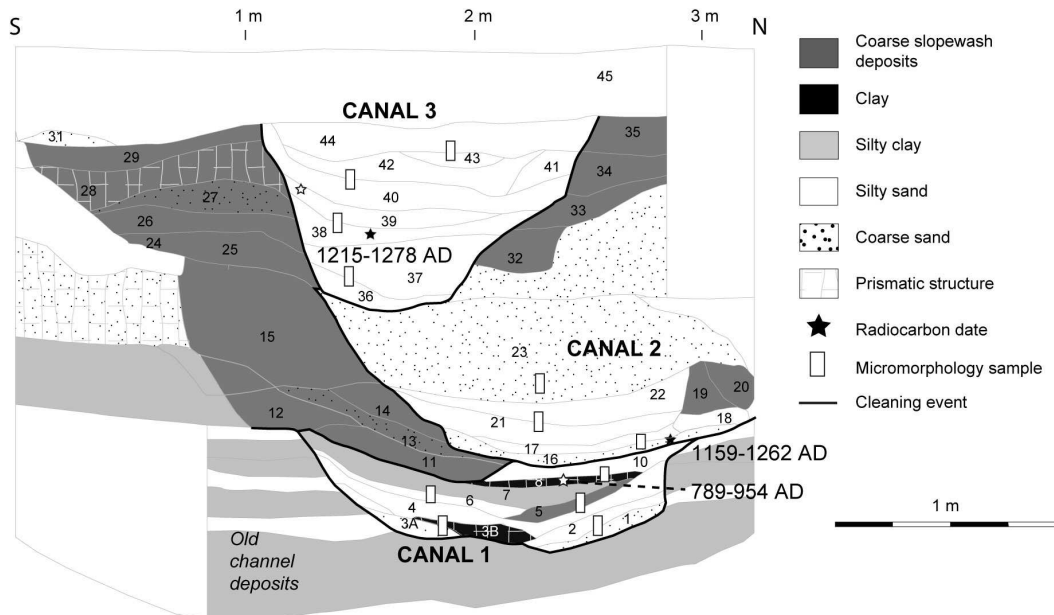


Fig. 5. Stratigraphic profile of Canal System 12 (Trench 1), chronology, and location of the soil micromorphological samples. CS12 was dug in an old channel and most of the sediments filling the three structures are laminated silts and sands, intertwined with slopewash deposits indicating rhythmic flow and temporary abandonment.

A journey of a thousand miles begins with one small step

M. W. Ertsen et al.

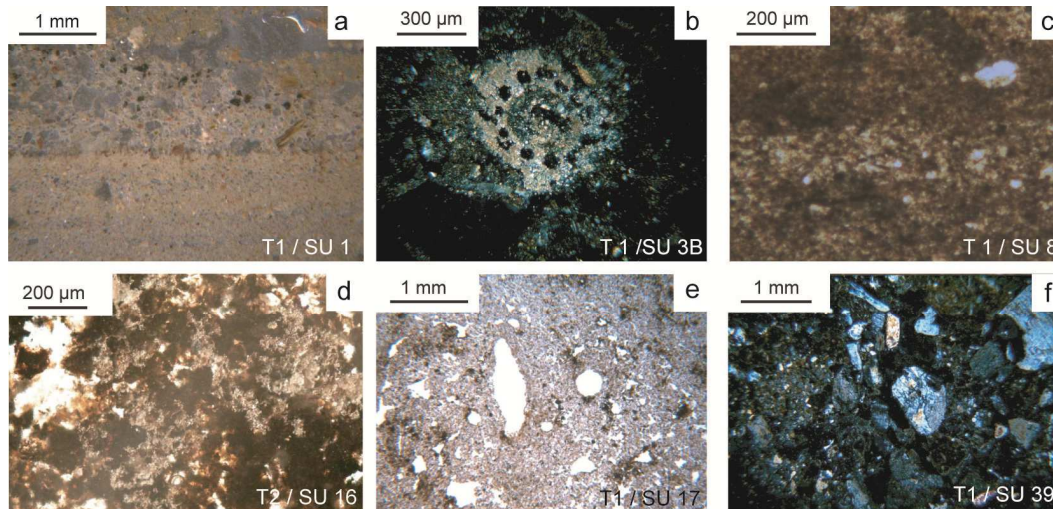


Fig. 6. Microphotographs of some short-term environmental and anthropic features identified in Canal System 12. PPL: plane polarized light, XPL: crossed polarized light, IL: incident light. **(a)** Graded silts rich in charcoal (IL); **(b)** transversal cross-cut of the stem of a characae (XPL); **(c)** mixed flaky burnt organic matter with particles of micrite calcium carbonate (ashes) indicating in situ burning (XPL); **(d)** collapsed structure as a result of moist conditions/vuggy structure (PPL); **(e)** weakly-sorted deposits composed of sand and rounded soil aggregates indicating erosional processes; **(f)** soil aggregates and the lack of soil development.

Title Page

Abstract

Introduction

Conclusions

References

Tables

Figures

⏪

⏩

◀

▶

Back

Close

Full Screen / Esc

Printer-friendly Version

Interactive Discussion



Fig. 7. Impressions of the site of Las Capas. Top: overview; middle: areal overview; bottom: detail of fields. Photos by Henry D. Wallace, Desert Archaeology, Inc.

HESSD

10, 14265–14304, 2013

**A journey of a
thousand miles
begins with one
small step**

M. W. Ertsen et al.

Title Page

Abstract

Introduction

Conclusions

References

Tables

Figures

◀

▶

◀

▶

Back

Close

Full Screen / Esc

Printer-friendly Version

Interactive Discussion



HESSD

10, 14265–14304, 2013

A journey of a thousand miles begins with one small step

M. W. Ertsen et al.

Title Page

Abstract

Introduction

Conclusions

References

Tables

Figures

◀

▶

◀

▶

Back

Close

Full Screen / Esc

Printer-friendly Version

Interactive Discussion

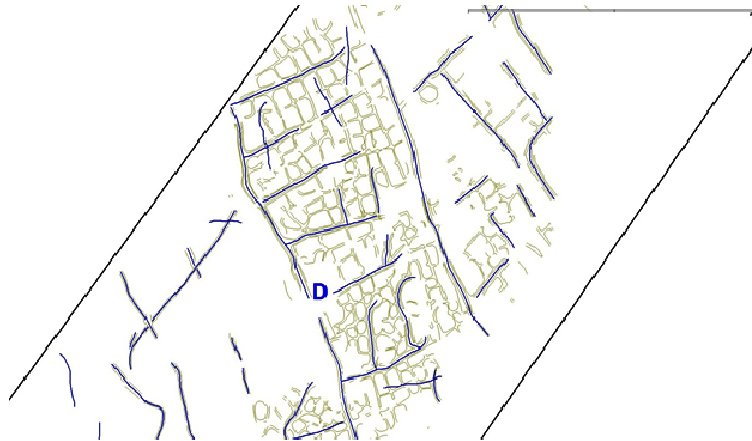


Fig. 8. The irrigation system (blue lines = canals; scale = 70 m; image courtesy of Desert Archaeology, Inc.).

A journey of a thousand miles begins with one small step

M. W. Ertsen et al.

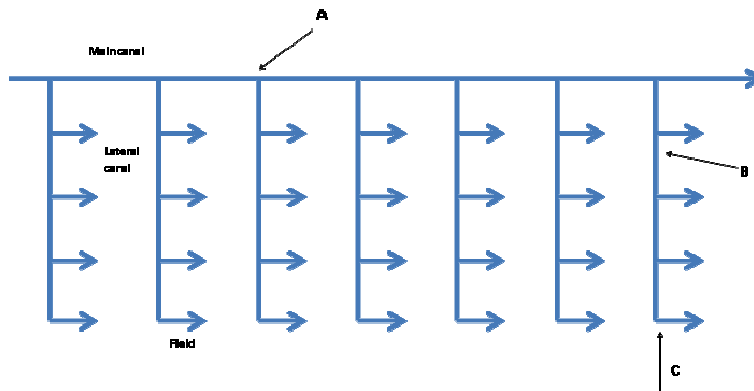


Fig. 9. Schematic of the model, with one main canal (or a distribution?), 7 laterals and 28 fields (A, B and C are explained in the text).

[Title Page](#)[Abstract](#)[Introduction](#)[Conclusions](#)[References](#)[Tables](#)[Figures](#)[⏪](#)[⏩](#)[◀](#)[▶](#)[Back](#)[Close](#)[Full Screen / Esc](#)[Printer-friendly Version](#)[Interactive Discussion](#)