

Comparing future trends of hydrology in four large African river basins **and their** implications
on adaptations: **Supplementary material**

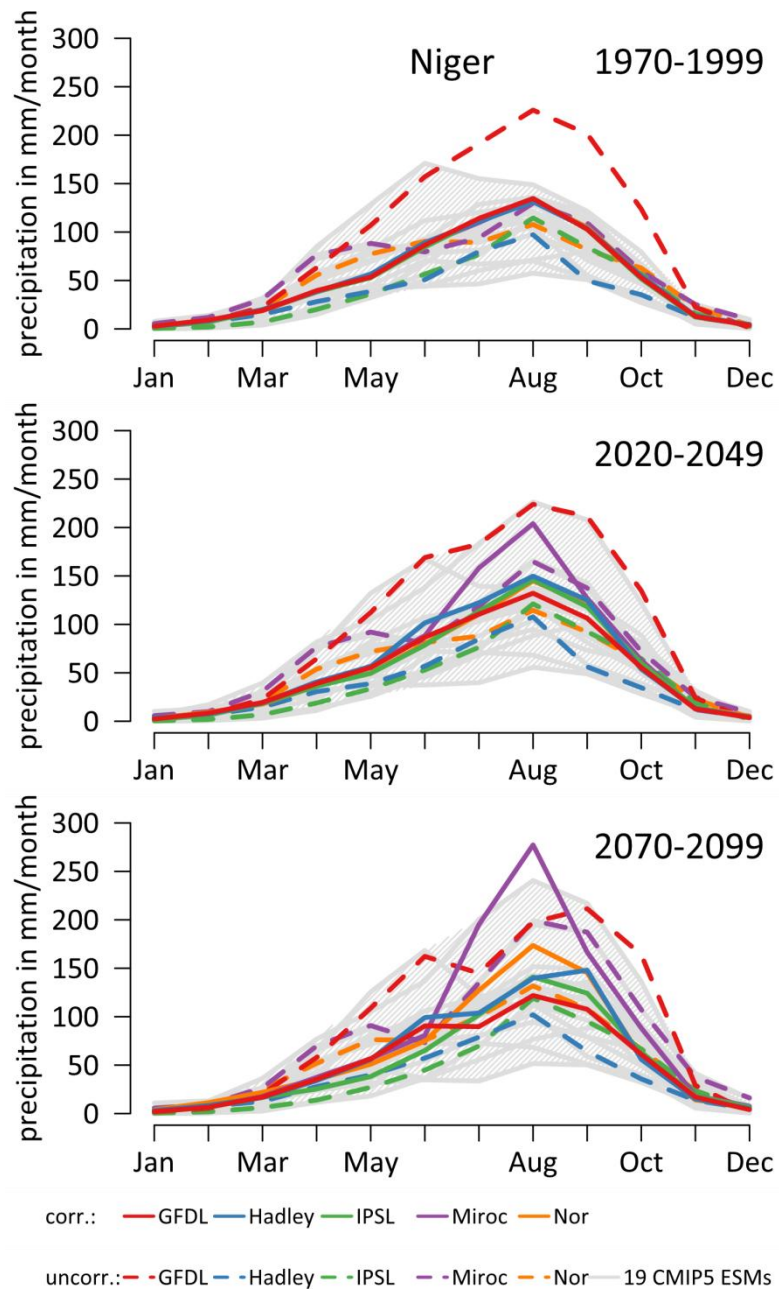


Figure 1 Mean monthly precipitation of corrected and uncorrected ISI-MIP climate models and 19 other CMIP-5 ESMs for the Niger basin during the periods 1970-1999, 2020-2049 and 2070-2099.

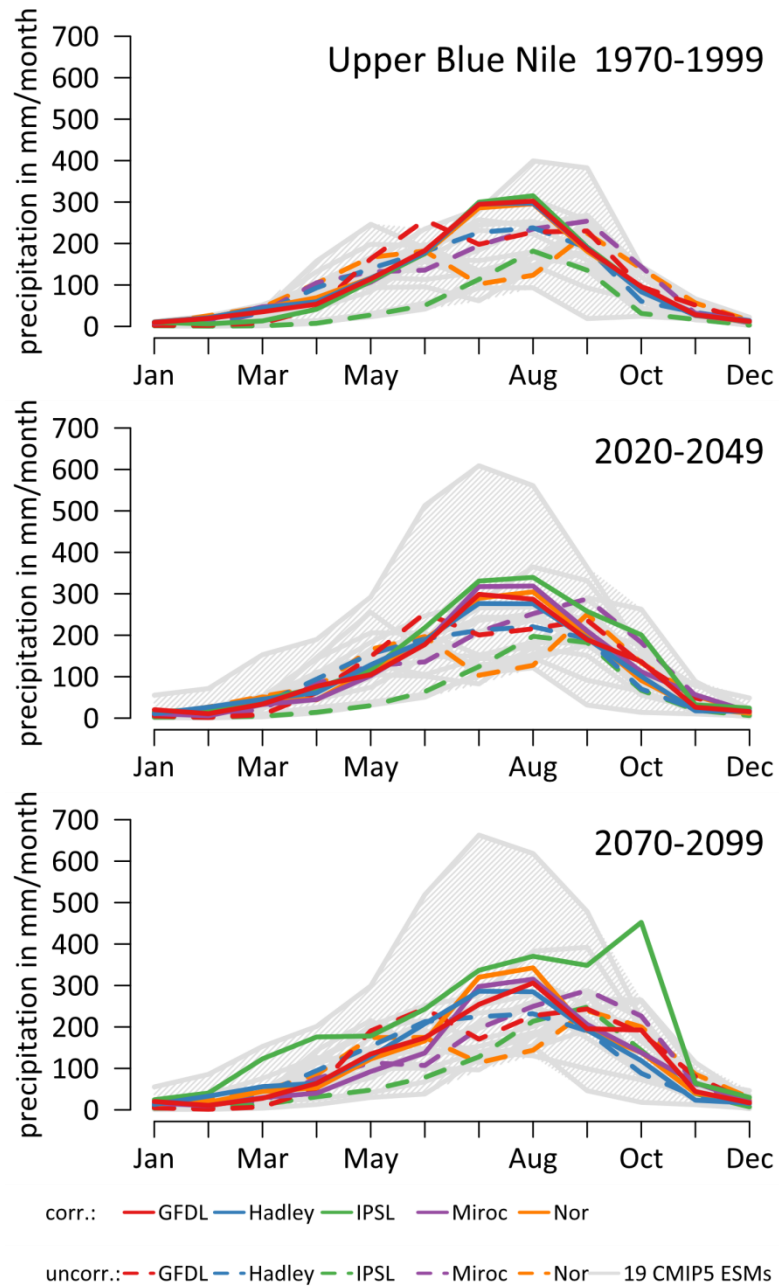


Figure 2 Mean monthly precipitation of corrected and uncorrected ISI-MIP climate models and 19 other CMIP-5 ESMs for the Upper Blue Nile basin during the periods 1970-1999, 2020-2049 and 2070-2099.

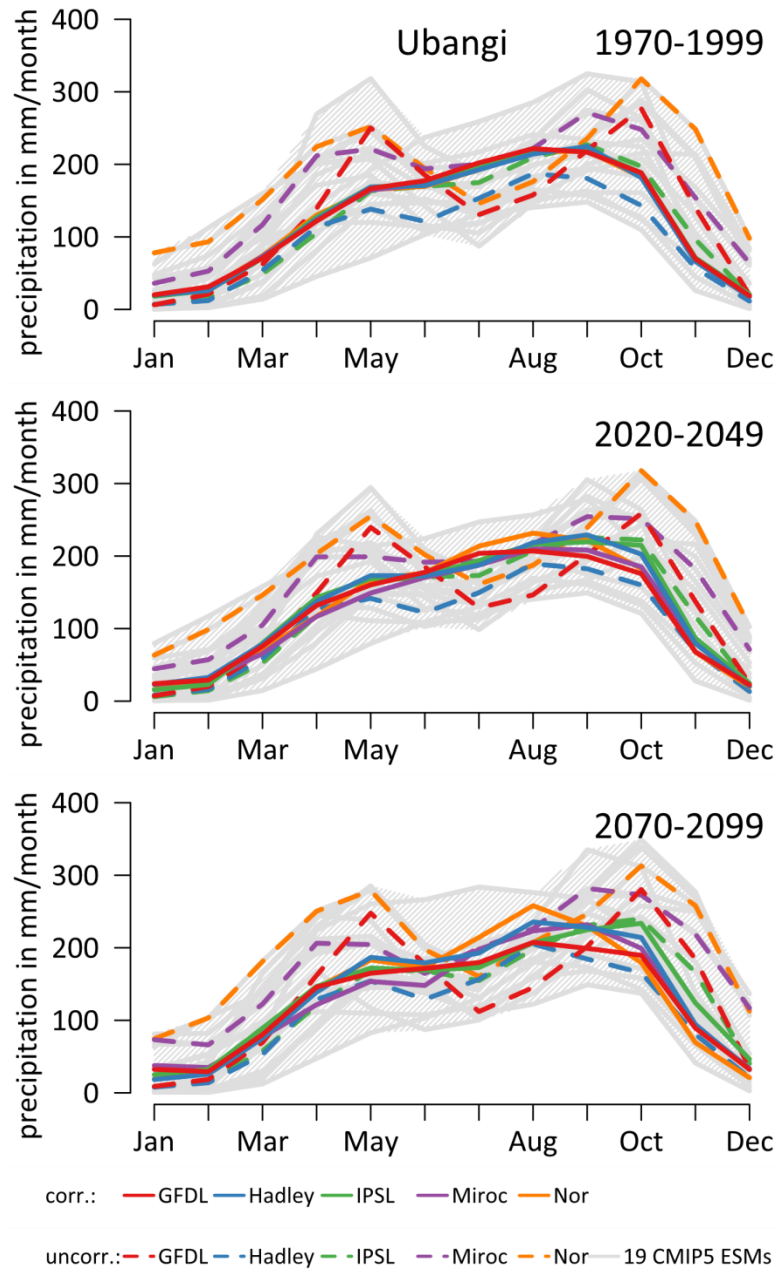


Figure 3 Mean monthly precipitation of corrected and uncorrected ISI-MIP climate models and 19 other CMIP-5 ESMs for the Ubangi basin during the periods 1970-1999, 2020-2049 and 2070-2099.

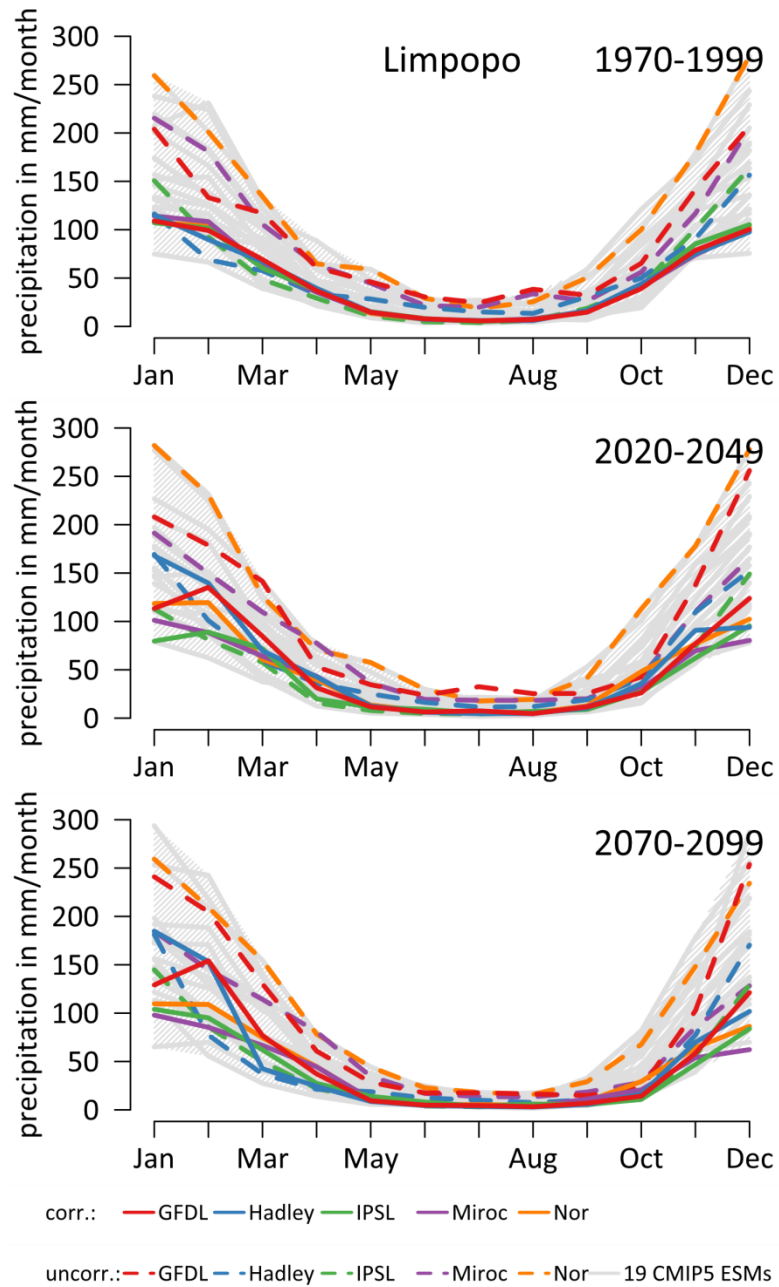


Figure 4 Mean monthly precipitation of corrected and uncorrected ISI-MIP climate models and 19 other CMIP-5 ESMs for the Limpopo basin during the periods 1970-1999, 2020-2049 and 2070-2099.