



Landslide susceptibility from mathematical model

G. Capparelli and
P. Versace

This discussion paper is/has been under review for the journal Hydrology and Earth System Sciences (HESS). Please refer to the corresponding final paper in HESS if available.

Landslide susceptibility from mathematical model in Sarno area

G. Capparelli and P. P. Versace

Department of Environmental and Chemical Engineering, University of Calabria, Arcavacata di Rende (CS), Italy

Received: 3 July 2013 – Accepted: 5 July 2013 – Published: 21 October 2013

Correspondence to: G. Capparelli (giovanna.capparelli@unical.it)

Published by Copernicus Publications on behalf of the European Geosciences Union.

[Title Page](#)

[Abstract](#) | [Introduction](#)

[Conclusions](#) | [References](#)

[Tables](#) | [Figures](#)

[⏪](#) | [⏩](#)

[◀](#) | [▶](#)

[Back](#) | [Close](#)

[Full Screen / Esc](#)

[Printer-friendly Version](#)

[Interactive Discussion](#)



Abstract

Rainfall is accepted as a major precursor for many types of slope movements (rapid, shallow soil slips and deeper landslides) and the technical literature is rich in examples of study cases and analysis models, related to landslides induced by rainfall.

In general, the developed model can be regrouped in two categories: hydrological and complete. The first ones involve simple empirical relationships linking antecedent precipitation to the time that the landslide occurs; the latter consist of more complex expressions that take several components into account, including specific site conditions, mechanical, hydraulic and physical soil properties, local seepage conditions, and the contribution of these to soil strength.

In this study, the analysis was carried out by using a model belonging to the second category for a landslide-prone area in Campania region (Southern Italy), where disastrous mud-flows occurred on 5 May 1998.

In details, the model named SUSHI (Saturated Unsaturated Simulation for Hillslope Instability) was used and the obtained results made possible to better define the triggering conditions and differentiate the scenarios leading to instability of those slopes.

1 Introduction

The problems and the damage caused by landslides become increasingly complex and worrisome. Among the factors which contribute to the occurrence of these phenomena, rainfall is one of the most important. As a result of rainfall events and subsequent infiltration into the subsoil, the regime of pore pressures can be profoundly altered: decrease of capillary tension in the unsaturated soil layers, increase in pore pressure in the layers already saturated, saturation of initially unsaturated layers before rainfall event. The direct consequence of this variation for the stability of a slope is, in any case, the reduction of the resistance forces.

HESSD

10, 12643–12662, 2013

Landslide susceptibility from mathematical model

G. Capparelli and
P. Versace

Title Page

Abstract

Introduction

Conclusions

References

Tables

Figures

⏪

⏩

◀

▶

Back

Close

Full Screen / Esc

Printer-friendly Version

Interactive Discussion

The occurrence of the phenomena is also influenced by heterogeneity of hydraulic and geotechnical properties, soil moisture and water interaction.

In this context, the technical literature reports many approaches that are different for: (a) the spatial scale range adopted that varies from wide area, up to ten of thousands kilometers, to small area, that can be reduced to a single landslide; (b) the quality and quantity of hydrologic, hydraulic and geotechnical available data; (c) the adopted detail for describing the hydrological and geotechnical mechanisms in slope. Concerning the type of modelling, two categories can be identified: hydrological and complete. The first category comprises all the models that are based on historical landslides data and related antecedent rainfall heights, and do not require field instrumentations and measurements (Campbell, 1975; Caine, 1980; Cannon and Ellen 1985; Wieczorek 1987; UNDRO, 1991; Sirangelo and Versace, 1992; Wilson and Wieczorek, 1995; Guzzetti, 2008; Cepeda et al., 2010; Capparelli and Versace, 2011). However, this kind of analysis does not give any information about the hydrological processes involved in a landslide area and thus it does not improve our understanding of landslide dynamics. On the contrary, complete models can help in understanding triggering mechanism since they attempt to reproduce the physical behaviour of the processes involved at hillslope scale, employing detailed hydrological, hydraulic and geotechnical information (Montgomery and Dietrich, 1994; Wu and Sidle, 1995; Pack et al., 1998; Gasmol et al., 2000; Iverson, 2000; Tsaparas et al., 2000; Baum et al., 2002, 2010; Tsai and Yang, 2006; Qui et al., 2007; Simoni et al., 2007; Tsai et al., 2008). Referred to complete models, it is possible to make a general distinction between regional and local models. The former develop analysis over wide areas and usually produce a susceptibility map characterizing the landslide prone zones according to a stability index. The latter are in general much more accurate for analyzing the slope stability based on detailed hydraulic and geotechnical characteristics; they can reproduce the spatial and temporal pattern of water flows in domains very well detailed, and to take account of hydrological phenomena that interfere with the groundwater flow such as the meteorological forcing, the sliding surface, evapotranspiration (Arnone et al., 2011).

Landslide susceptibility from mathematical model

G. Capparelli and
P. Versace

[Title Page](#)

[Abstract](#)

[Introduction](#)

[Conclusions](#)

[References](#)

[Tables](#)

[Figures](#)

[⏪](#)

[⏩](#)

[◀](#)

[▶](#)

[Back](#)

[Close](#)

[Full Screen / Esc](#)

[Printer-friendly Version](#)

[Interactive Discussion](#)



Landslide susceptibility from mathematical model

G. Capparelli and
P. Versace

Title Page

Abstract

Introduction

Conclusions

References

Tables

Figures

⏪

⏩

◀

▶

Back

Close

Full Screen / Esc

Printer-friendly Version

Interactive Discussion

In this work a local model named SUSHI (Simulation for Saturated unsaturated Hill-slope Instability, Capparelli, 2006; Capparelli and Versace, 2011) is applied. SUSHI takes into account several components, as specific site conditions, mechanical, hydraulic and physical soil properties, locale seepage conditions and the contribution of these to soil strength. The model was developed in order to be suitable for the cases of strongly heterogeneous soils, irregular domains, boundary conditions variable in space and time. It is composed by a hydraulic module, to analyse the water circulation in saturated and unsaturated layers, in non-stationary conditions, caused by rainfall infiltration, and by a geotechnical module, which provides indications regarding the slope stability starting from limited equilibrium methods. After a brief description of the model, the paper describes some applications to some very complex cases such as the pyroclastic cover of Sarno (Campania region – Southern Italy), where terrible and dangerous mud flows occurred on 5 May 1998, during which 159 people died and life lines and villages were destroyed.

2 General description of the study area

The study area is located in Campania region (Southern Italy), where catastrophic flowslides and debris flows in pyroclastic soils are very usual. A brief list of some recent events is reported in Table 1 (Versace et al., 2009), which includes also information about the size of the landslide. The area where the landslides occurred includes the Pizzo d'Alvano massif, a NW-SE oriented morphological structure, consisting of a sequence of limestone, dolomitic limestone and, subordinately, marly limestone dating from the Lower to Upper Cretaceous age and characterized by a thickness of several hundred meters. The Pizzo d'Alvano slopes are mantled by very loose pyroclastic soils, produced from the explosive phases of the Somma-Vesuvius volcanic activity, both as primary air-fall deposits and volcanoclastic deposits. Air-fall deposits were dispersed from N-NE to S-SE, according to prevailing wind direction and covered a wide area reaching distances up to 50 km. Pumiceous and ashy deposits belonging to at least

Landslide susceptibility from mathematical model

G. Capparelli and
P. Versace

Title Page

Abstract

Introduction

Conclusions

References

Tables

Figures

⏪

⏩

◀

▶

Back

Close

Full Screen / Esc

Printer-friendly Version

Interactive Discussion

5 different eruptions were recognized. From the oldest to the youngest, they are: Otaviano Pumice (8000 yr BP), Avellino Pumice (3800 yr BP), 79 AD Pumice, 472 AD Pumice, 1631 AD Pumice. The deposits are affected by pedogenetic processes determining paleosol horizons during rest phases of the volcanic activity. The total thickness of the pyroclastic covers in these areas ranges between few decimetres to 10 m, near to the uppermost flat areas. The general structure of the soil progressively adapts itself to the morphology of the calcareous substratum showing, therefore, complex and variable geometries.

On 5 May 1998, 40 mud flows were triggered in almost all the basins of the slopes of Pizzo d'Alvano (Fig. 1), involving an extension area of around 60 km² and causing immense damages to urban centres (Sarno, Quindici, Siano and Bracigliano). These landslides, classified as very rapid to extremely rapid soil slip/debris flows, were analyzed in several papers, in which the most significant geomorphological, hydrological and geotechnical aspects of slope failure and post-failure evolution were described and several models for the triggering and channelization of flow-like landslides were developed (Cascini et al., 2000; Olivares and Picarelli, 2003).

Applications of SUSHI model involved the trigger zone of the mudslide occurred in the Tuostolo basin, represented in Fig. 1.

3 Framework of SUSHI model

The model named SUSHI (Saturated Unsaturated Simulation for Hillslope Instability, Capparelli, 2006; Capparelli and Versace, 2011) is based on the combined use of two modules: HydroSUSHI, aimed at studying subsoil water circulation, and GeoSUSHI, suited for evaluating the degree of slope stability.

Infiltration analysis is carried out by using Richards' equation, expressed as a function of the suction to enable applications for layered soils and transient flow regime in both saturated and unsaturated conditions. Stability analysis is performed with limit

equilibrium methods, adapted for the unsaturated soils as suggested by Fredlund and Rahardjo (1993).

HydroSUSHI analyses subsoil water circulation in a spatial 2-D domain which can be characterized by irregular soil stratigraphy with different hydrogeological properties.

5 By adopting a Cartesian orthogonal reference system Oxz , with z axis positive downwards, the governing differential equation is:

$$\frac{\partial}{\partial x} \left[K(\psi) \frac{\partial \psi}{\partial x} \right] + \frac{\partial}{\partial z} \left[K(\psi) \left(\frac{\partial \psi}{\partial z} - 1 \right) \right] = C_{SU}(\psi) \frac{\partial \psi}{\partial t} \quad (1)$$

where $K(\psi)$ is the hydraulic conductivity which depends on suction ψ for unsaturated soils. Soil anisotropy was ignored, so $K_x(\psi) = K_z(\psi) = K(\psi)$ is assumed. The $C_{SU}(\psi)$ coefficient was introduced to simulate water flow in both unsaturated and saturated zones, so avoiding the use of different algorithms for the resolution of parabolic and elliptical equations respectively (Capparelli and Versace, 2011; Paniconi et al., 1991). Since Richards' equation does not allow analytical solutions unless in cases where simplifying hypotheses and /or particular boundary conditions are introduced (Iverson, 2000), the finite differences scheme and the fully implicit method are adopted for numerical simulations of SUSHI (Capparelli and Versace, 2011). Moreover, was upgraded through the integration of a method for the evapotranspiration process description, even if this component usually produces secondary effects when slope mobilizations occur in very rainy periods. Validation tests were carried out by comparing HydroSUSHI outputs with solutions proposed in literature (Capparelli, 2006), and with the suction data collected by the jet fill tensiometers located in a pilote site (Capparelli and Versace, 2011). The comparison of results for both applications was satisfactory and confirmed the capability of the model to simulate groundwater circulation.

Concerning GeoSUSHI module, it is based on well-known General Limit Equilibrium methods, and it used the slope failure equation proposed by Fredlund and Rahardjo (1993) for unsaturated soils:

$$\tau = c' + (\sigma - u_a) \tan \phi' + (u_a - u_w) \tan \phi_b \quad (2)$$

12648

HESSD

10, 12643–12662, 2013

Landslide susceptibility from mathematical model

G. Capparelli and
P. Versace

Title Page

Abstract

Introduction

Conclusions

References

Tables

Figures

⏪

⏩

◀

▶

Back

Close

Full Screen / Esc

Printer-friendly Version

Interactive Discussion



where τ is shear strength; c' is effective cohesion; σ is total normal stress; u_a is pore air pressure due to surface tension; u_w is pore water pressure; ϕ' is the effective friction angle; ϕ_b is the angle expressing the rate of strength increase related to matric suction. In practical applications, this last term is evaluated using the expression proposed by Vanapalli et al. (1996).

4 Modelling of flowslide triggering and results

To define the dynamics of the water circulation in the subsoil, the solution process requires the definition of the investigated domain, the soil water characteristic curves, the permeability functions, the mechanical properties of the involved soils, the boundary and initial conditions. With reference to the geological characteristics, the surveys and studies carried out by using the information available in the literature indicated the presence of alternating layers of pumice with a composition and thickness related to the characteristics of the eruptions and to the distance from the eruptive centers. As already mentioned in Sect. 2, this sequence comprises both primary air-fall and volcanoclastic deposits. The primary deposits are composed by alternating layers of pumice, with interbedded paleosoils. At the basis of this sequence, above the bedrock, there is a layer of red-dark clayey ashy soil (“regolite”) with rare limestone fragments. The modelled slope and the stratigraphic details are illustrated in Fig. 2.

In order to determine the mechanical properties of the involved cover, soil samples were collected, both in the investigated area and in other triggering areas belong to Pizzo d’Alvano slopes. Physical and mechanical properties were determined for all the samples through laboratory tests, and the soil layers were assumed as isotropic.

For hydraulic properties in unsaturated conditions, the best fit of laboratory data was obtained with the retention curves proposed by Van Genuchten and Nielsen (1985). The values of the bubbling pressure, or air-entry tension, ψ_b , were determined through the graphic method proposed by Fredlund and Xing (1994). In summary, the parameter values are listed in Table 2.

Landslide susceptibility from mathematical model

G. Capparelli and
P. Versace

Title Page

Abstract

Introduction

Conclusions

References

Tables

Figures

⏪

⏩

◀

▶

Back

Close

Full Screen / Esc

Printer-friendly Version

Interactive Discussion



The variable boundary conditions have been provided by using both Dirichlet and Neumann conditions. In details, on the basis of domain side:

- on the top (i.e. on the ground surface) flux boundary condition equal to rainfall infiltration capacity was performed; the runs allow to define step by step the infiltration rate for each node of the domain;
- on the bottom (i.e. at the contact between the pyroclastic cover and the bedrock) no flux was imposed, since the bedrock was assumed impervious;
- similarly for the upslope left side, a Neumann condition of no water flow was fixed, since the morphology of the area under analysis makes plausible the hypothesis that there is coincidence between the superficial and the deep watershed so that contributions of water coming from upstream may be assumed equal to zero;
- for the downslope right side, along the morphological frames, two different boundary conditions were imposed by using a Neumann or a Dirichlet condition if saturation occurs or not respectively.

The initial conditions were defined in a non-arbitrary way, due to the use of data provided by some tensiometers installed after the landslide occurrence near the study area. The measurements were performed at different depths from the ground level: at 20–40–60–80–100–120–140 cm. This information has been of great use to set the initial conditions. Constant distribution suction throughout the domain was firstly hypothesized by selecting, in particular, the following values:

$$\psi(x, z; t = 0) = -0,3; -0,4; -0,6; -0,8; -1; -1,4 \text{ [m]} \quad (3)$$

A warm-up was performed for each of these values, by starting a simulation with no rain in order to allow the redistribution of water content among the nodes of the domain and, therefore, between the layers, based on their hydraulic characteristics. The equilibrium condition was reached when the standard deviation of the suction values of each node,

**Landslide
susceptibility from
mathematical model**

G. Capparelli and
P. Versace

Title Page

Abstract

Introduction

Conclusions

References

Tables

Figures

⏪

⏩

◀

▶

Back

Close

Full Screen / Esc

Printer-friendly Version

Interactive Discussion



that attribute to the dynamics of water circulation in the surface soils a primer role either for the triggering phase and the subsequent propagation phase.

The results could be even more significant if more realistic rainfall data were available. The simulations certainly would provide greater distinction in the performed period, providing an index of stability, here represented by the safety factor, much less than 1.

Further applications to cases recorded on 5 May 1998 and periods without landslides could certainly better delineate the critical conditions and provide useful information for a possible early warning system.

References

- Arnone, E., Noto, L. V., Lepore, C., and Bras, R. L.: Physically-based and distributed approach to analyze rainfall-triggered landslides at watershed scale, *Geomorphology*, 133, 121–131, doi:10.1016/j.geomorph.2011.03.019, 2011.
- Baum, R. L., Savage, W. Z., and Godt, J. W.: TRIGRS – a FORTRAN program for transient rainfall infiltration and grid-based regional slope stability analysis, US Geological Survey Open-File Report, 02-0424, 2002.
- Baum, R. L., Godt, J. W., and Savane, W. Z.: Estimating the timing and location of shallow rainfall-induced landslides using a model for transient, unsaturated infiltration, *J. Geophys. Res.*, 115, 1–26, 2010.
- Caine N.: The rainfall intensity-duration control of shallow landslides and debris flows, *Geogr. Ann.*, 62A, 23–27, 1980.
- Campbell, R. H.: Soil Slips, Debris Flows and Rainstorms in the Santa Monica Mountains and Vicinity, Southern California, U.S. Geological Survey Professional Paper 851, 1975.
- Cannon, S. H. and Ellen, S. D.: Rainfall conditions for abundant debris avalanches, San Francisco Bay region, California, *Cal. Geol.*, 38, 267–272, 1985.
- Capparelli, G.: Il ruolo della circolazione idrica sotterranea nei pendii soggetti a fenomeni di stabilizzazione, Ph.D. Dissertation, University of Calabria, 2006.
- Capparelli, G. and Versace, P.: FLAIR and SUSHI: Two mathematical models for Early Warning Systems for rainfall induced landslides, *Landslides*, 8, 67–79, 2010.

Landslide susceptibility from mathematical model

G. Capparelli and
P. Versace

Title Page

Abstract

Introduction

Conclusions

References

Tables

Figures

⏪

⏩

◀

▶

Back

Close

Full Screen / Esc

Printer-friendly Version

Interactive Discussion



Landslide susceptibility from mathematical model

G. Capparelli and
P. Versace

Title Page

Abstract

Introduction

Conclusions

References

Tables

Figures

⏪

⏩

◀

▶

Back

Close

Full Screen / Esc

Printer-friendly Version

Interactive Discussion

- Cascini, L., Guida, D., Romanzi, G., Nocera, N., and Sorbino, G.: A preliminary model for the landslides of May 1998 in Campania Region, Proc. of the 2nd International Symposium on the Geotechnics of Hard Soils – Soft Rocks, Naples, 3, 1623–1649, 2000.
- Cepeda, J., Hoeg, K., and Nadim, F.: Landslide-triggering rainfall thresholds: a conceptual framework, Q. J. Eng. Geol. Hydrogeol., 43, 69–84, 2010.
- Fredlund, D. G. and Rahardjo, H.: Soil Mechanics for Unsaturated Soils, John Wiley & Sons, 1993.
- Fredlund, D. G. and Xing, A.: Equations for the soil-water characteristic curve, Can. Geotech. J., 31, 521–532, 1994.
- Gasmo, J. M., Rahardjo, H., Deutscher, M. S., and Leong, E. C.: Preliminary assessment of slope stability with respect to rainfall-induced slope failures, in: Unsaturated Soils for Asia, edited by: Toll and Leon E.C., Rahardjo, Balkema Rotterdam, 783–788, 2000.
- Guzzetti, F.: Book Review of “Measuring Vulnerability to Natural Hazards”, Nat. Hazards Earth Syst. Sci. 8, p. 521, 2008.
- Iverson, R. M.: Landslide triggering by rain infiltration, Water Resour. Res., 36, 1897–1910, 2000.
- Montgomery, D. R. and Dietrich, W. E.: A physically based model topographic control on shallow landsliding, Water Resour. Res., 30, 1153–1171, 1994.
- Olivares, L. and Picarelli, L.: Shallow flowslides triggered by intense rainfalls on natural slopes covered by loose unsaturated pyroclastic soils, Géotechnique, 53, 283–288, 2003.
- Pack, R. T., Tarboton, D. G., and Goodwin, C. N.: SINMAP, a stability index approach to terrain stability hazard mapping, SINMAP user’s manual, 68, Terratech Consulting Ltd, 1998.
- Paniconi, C., Alvaro, A. A., and Wood, E. F.: Numerical evaluation of iterative and noniterative methods for the solution of the nonlinear Richards equation, Water Resour. Res., 27, 1147–1163, 1991.
- Qui, C., Esaki, T., Xie, M., Mitani, Y., and Wang, C.: Spatio temporal estimation of shallow landslides hazard triggered by rainfall using a three-dimensional model, Environ. Geol., 52, 1569–1579, 2007.
- Simoni, S., Zanoti, F., Bertoldi, G., and Rigon, R.: Modelling the probability of occurrence of avallo landslides and channelized debris flow using GEOtop_FS, Hydrological Processes, Wiley InterScience, 2007.

Landslide susceptibility from mathematical model

G. Capparelli and
P. Versace

Title Page

Abstract

Introduction

Conclusions

References

Tables

Figures

⏪

⏩

◀

▶

Back

Close

Full Screen / Esc

Printer-friendly Version

Interactive Discussion

Sirangelo, B. and Versace, P.: Modelli stocastici di precipitazione e soglie pluviometriche di innesco dei movimenti franosi, Proc. of XXIII Convegno Nazionale di Idraulica e Costruzioni Idrauliche, Firenze, Vol. D: 361–373, 1992.

5 Tsai, T. L. and Yang, J. C.: Modelling of rainfall triggered shallow landslide, Environ. Geol., 50, 525–534, 2006.

Tsai, T. L., Chen, H. E., and Yang, J. C.: Numerical modeling of rainstorm induced shallow landslides in saturated and unsaturated soils, Environ. Geol., 55, 1269–1277, 2008.

10 Tsaparas, I., Toll, D. G., and Rahardjo, H.: Influence of rainfall sequences on the seepage conditions within a slope: A parametric study, in: Unsaturated Soils for Asia, edited by: Toll, D. G. and Leon, E. C., Rahardjo, Balkema Rotterdam, 837–842, 2000.

UNDRO: Mitigation Natural Disaster. Phenomena, Effects and Options, United Nations, New York, 164 pp., 1991.

Vanapalli, S. K., Fredlund, D. G., Pufahl, D. E., and Clifton, A. W.: Model for the prediction of shear strength with respect to soil suction, Can. Geotech. J., 33, 379–392, 1996.

15 Van Genuchten, M. T. and Nielsen, D. R.: On describing and predicting the hydraulic properties of unsaturated soils, Ann. Geophys., 3, 615–628, 1985,
http://www.ann-geophys.net/3/615/1985/.

Versace, P., Picarelli, L., De Riso, R., and Palmieri, M.: Landslide Disaster Management In Italy, in Proc. of 2007 International Forum on Landslide Disaster Management, Hong Kong (CHINA), 2007, edited by: Ho, K. and Li, V., Vol. 1, 281–318, 2009.

20 Wieczorek, G. F.: Effect of rainfall intensity and duration on debris flows in central Santa Cruz Mountains, California, Geological Society of America, Rev. Eng. Geol., 7, 93–104, 1987.

Wilson, R. C. and Wieczorek, G. F.: Rainfall thresholds for the initiation of debris flow at La Honda, California, Environ. Eng. Geosci., 1, 11–27, 1995.

25 Wu, W. and Sidle, R. C.: A distributed slope stability model for steep forested basin, Water Resour. Res., 31, 2097–2110, 1995.

Landslide susceptibility from mathematical model

G. Capparelli and
P. Versace

Table 1. Features of some recent flowslides in Campania Region (Versace et al., 2009).

Site	Date	Length (m)	Volume (m ³)
Ischia	2006	450	3×10^4
Cervinara	1999	2×10^3	4×10^4
Avella	1998	15×10^2	2×10^4
S. Felice a C.	1998	8×10^2	3×10^4
Sarno	1998	$2-4 \times 10^3$	5×10^5
Bracigliano	1998	$1-2 \times 10^3$	15×10^4
Siano	1998	14×10^2	4×10^4
Quindici	1998	$1-4 \times 10^3$	5×10^5
Maiori	1954	10^3	5×10^4
Avellino	2005	4×10^2	2×10^4
Montoro Inf.	1997	2×10^3	3×10^4

[Title Page](#)
[Abstract](#)
[Introduction](#)
[Conclusions](#)
[References](#)
[Tables](#)
[Figures](#)
[⏪](#)
[⏩](#)
[◀](#)
[▶](#)
[Back](#)
[Close](#)
[Full Screen / Esc](#)
[Printer-friendly Version](#)
[Interactive Discussion](#)

Landslide susceptibility from mathematical model

G. Capparelli and
P. Versace

Table 2. Properties of the involved soils.

	Top Soil	Pumice 1631	Paleosoil	Pumice 472	Paleosoil	Regolite
Soil properties						
Dry unit weight [kN m^{-3}]	10.99	6	7	6	9	10.75
Saturated unit weight [kN m^{-3}]	17.2	13	13	13	15	15.3
Saturated soil water content θ_s	0.55	0.82	0.61	0.68	0.61	0.60
Residual soil water content θ_r	0.14	0.23	0.18	0.05	0.18	0.10
Saturated hydraulic conductivity K_s [m s^{-1}]	3.2E-05	1.0E-03	1.0E-06	1.0E-02	4.0E-06	7.6E-07
Effective cohesion c' [kPa]	2	0	4.5	0	4.7	15
Friction angle φ' [°]	15	30	24	32	28	21

[Title Page](#)
[Abstract](#)
[Introduction](#)
[Conclusions](#)
[References](#)
[Tables](#)
[Figures](#)
[Back](#)
[Close](#)
[Full Screen / Esc](#)
[Printer-friendly Version](#)
[Interactive Discussion](#)

HESSD

10, 12643–12662, 2013

Landslide susceptibility from mathematical model

G. Capparelli and
P. Versace

Title Page

Abstract

Introduction

Conclusions

References

Tables

Figures

⏪

⏩

◀

▶

Back

Close

Full Screen / Esc

Printer-friendly Version

Interactive Discussion



Fig. 1. Localization of Sarno (Southern Italy) and investigated area with SUSHI model.

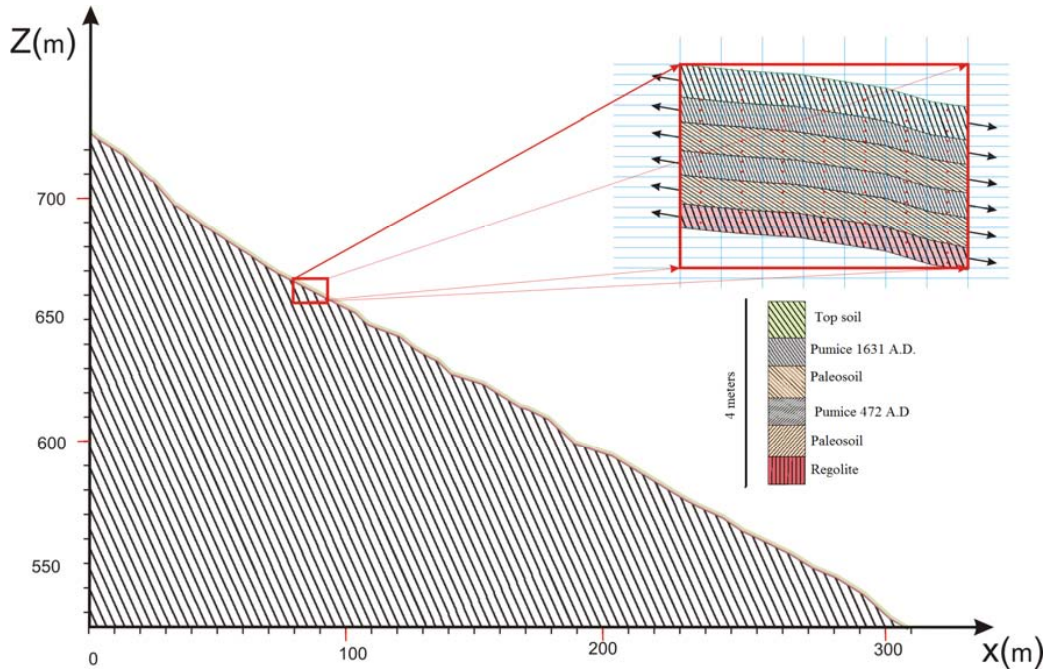


Fig. 2. Geometric and stratigraphic characterization of the investigated slope.

Landslide susceptibility from mathematical model

G. Capparelli and
P. Versace

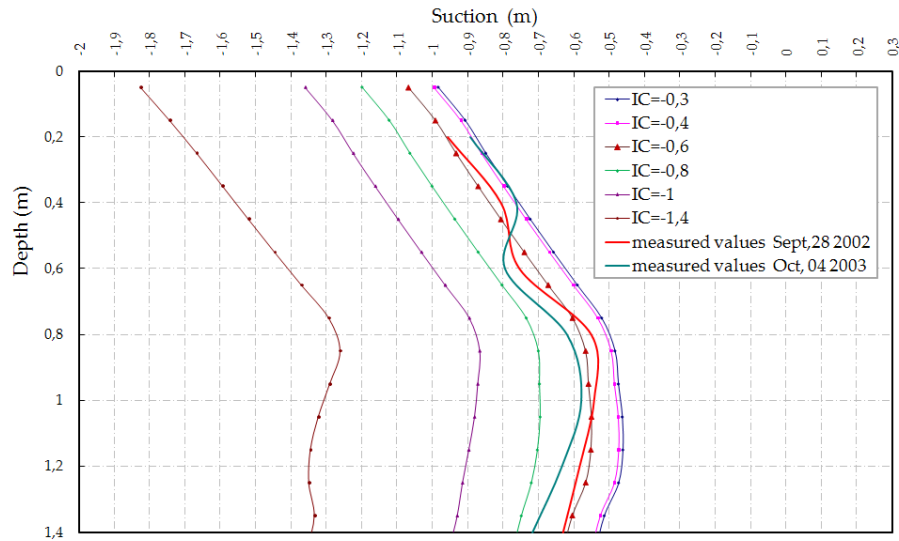


Fig. 3. Comparison between the suction values measured (red and green lines) and simulated for each initial condition (lines with dots).

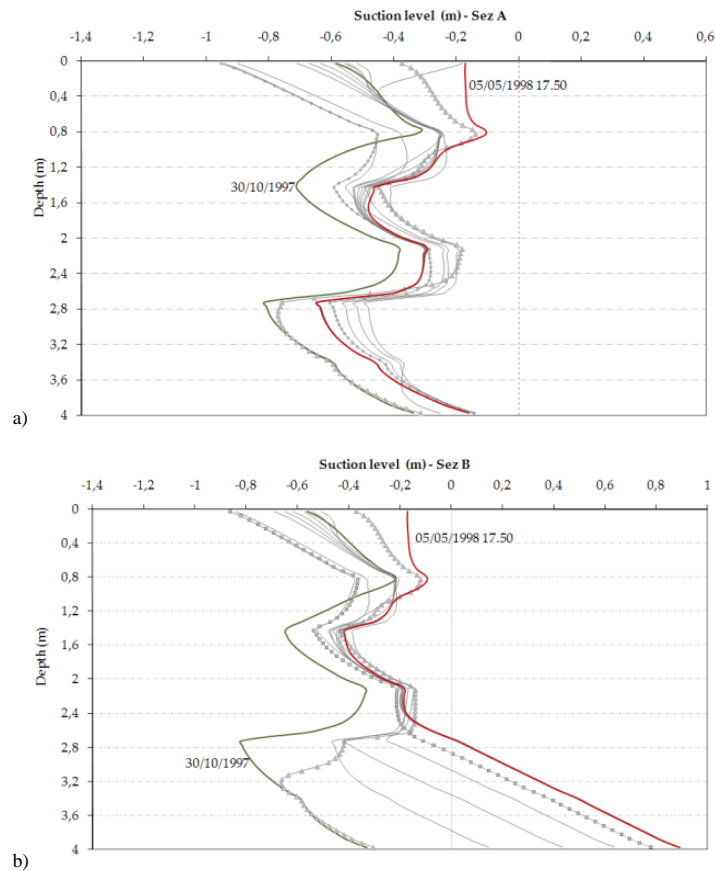
**Landslide
susceptibility from
mathematical model**G. Capparelli and
P. Versace

Fig. 4. Suction profile for **(a)** the upslope section (Sez A) and **(b)** the downslope section (Sez B).

Landslide susceptibility from mathematical model

G. Capparelli and
P. Versace

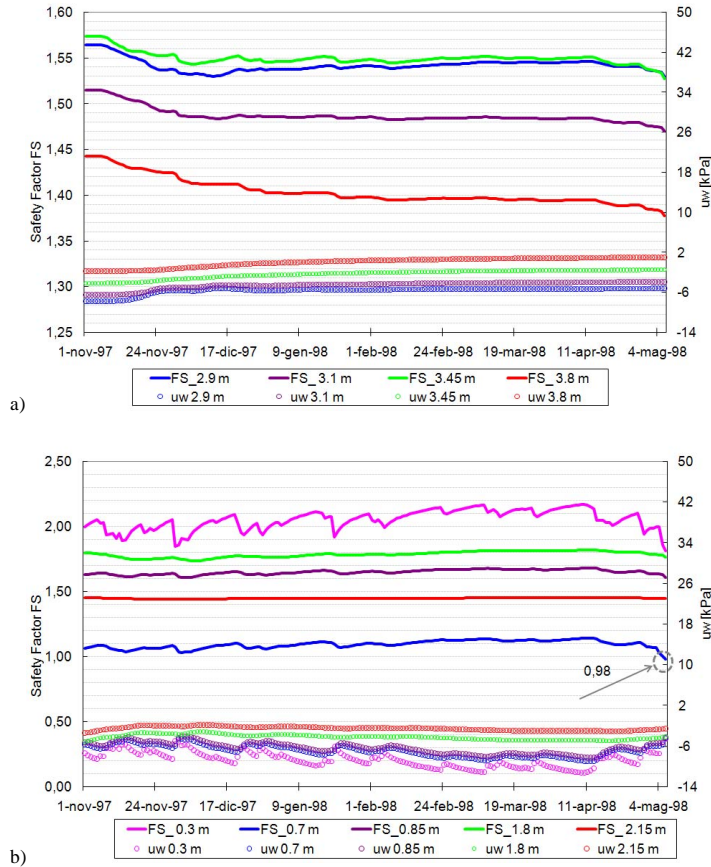


Fig. 5. Pore water pressure distribution and FS values at different depths.

[Title Page](#)

[Abstract](#) | [Introduction](#)

[Conclusions](#) | [References](#)

[Tables](#) | [Figures](#)

[◀](#) | [▶](#)

[◀](#) | [▶](#)

[Back](#) | [Close](#)

[Full Screen / Esc](#)

[Printer-friendly Version](#)

[Interactive Discussion](#)

