

**Derived flood  
frequency analysis**

U. Haberlandt and  
I. Radtke

# Derived flood frequency analysis using different model calibration strategies based on various types of rainfall–runoff data – a comparison

**U. Haberlandt and I. Radtke**

Institute of Water Resources Management, Hydrology and Agricultural Hydraulic Engineering, Leibniz University of Hannover, Hannover, Germany

Received: 21 July 2013 – Accepted: 5 August 2013 – Published: 14 August 2013

Correspondence to: U. Haberlandt (haberlandt@iww.uni-hannover.de)

Published by Copernicus Publications on behalf of the European Geosciences Union.

[Title Page](#)

[Abstract](#)

[Introduction](#)

[Conclusions](#)

[References](#)

[Tables](#)

[Figures](#)

[|◀](#)

[▶|](#)

[◀](#)

[▶](#)

[Back](#)

[Close](#)

[Full Screen / Esc](#)

[Printer-friendly Version](#)

[Interactive Discussion](#)



## Abstract

Derived flood frequency analysis allows to estimate design floods with hydrological modelling for poorly observed basins considering change and taking into account flood protection measures. There are several possible choices about precipitation input, discharge output and consequently regarding the calibration of the model. The objective of this study is to compare different calibration strategies for a hydrological model considering various types of rainfall input and runoff output data sets. Event based and continuous observed hourly rainfall data as well as disaggregated daily rainfall and stochastically generated hourly rainfall data are used as input for the model. As output short hourly and longer daily continuous flow time series as well as probability distributions of annual maximum peak flow series are employed. The performance of the strategies is evaluated using the obtained different model parameter sets for continuous simulation of discharge in an independent validation period and by comparing the model derived flood frequency distributions with the observed one. The investigations are carried out for three mesoscale catchments in Northern Germany with the hydrological model HEC-HMS. The results show that: (i) the same type of precipitation input data should be used for calibration and application of the hydrological model, (ii) a model calibrated using a small sample of extreme values works quite well for the simulation of continuous time series with moderate length but not vice versa, (iii) the best performance with small uncertainty is obtained when stochastic precipitation data and the observed probability distribution of peak flows are used for model calibration. This outcome suggests to calibrate a hydrological model directly on probability distributions of observed peak flows using stochastic rainfall as input if its purpose is the application for derived flood frequency analysis.

## Derived flood frequency analysis

U. Haberlandt and  
I. Radtke

[Title Page](#)

[Abstract](#)

[Introduction](#)

[Conclusions](#)

[References](#)

[Tables](#)

[Figures](#)

[⏪](#)

[⏩](#)

[◀](#)

[▶](#)

[Back](#)

[Close](#)

[Full Screen / Esc](#)

[Printer-friendly Version](#)

[Interactive Discussion](#)



## 1 Introduction

For reliable flood risk assessment and the development of effective flood protection measures a good knowledge of flood frequencies at different points in a catchment is required. The classical approach to obtain design flows is to carry out local or regional flood frequency analysis using long records of observed peak discharge data (e.g. Hosking and Wallis, 1997). If long flow observations are not available or if especially impacts of climate change, land use change or flood protection measures are to be investigated rainfall–runoff modeling is a good alternative to obtain design floods in a derived flood frequency approach.

Both, event based or continuous hydrological modeling is possible. A disadvantage of the event based simulation is the required assumption about equal return periods for the design storm and the resulting design flood. This is usually not given, considering the required simplifying assumption about initial soil moisture conditions in the catchment, the shape and the critical duration of the design storm (Viglione and Blöschl, 2009; Verhoest et al., 2010; Grimaldi et al., 2011). Using continuous rainfall–runoff simulation this problem can be avoided and the design flood is derived by flood frequency analysis of long series of simulated flows. However, such kinds of hydrological modeling require long continuous rainfall series with high temporal and sufficient spatial resolution. Especially for flood modeling in smaller catchments sub-daily time steps are required for simulation. Given the restricted availability of those observed data, synthetic precipitation is recently used more often for this purpose (Cameron et al., 1999; Blazkova and Beven, 2004; Aronica and Candela, 2007; Moretti and Montanari, 2008; Haberlandt et al., 2008; Boughton and Droop, 2003; Grimaldi et al., 2012; Viglione et al., 2012).

One challenge using this approach is the optimal calibration of the hydrological model considering the different nature of observed and synthetic precipitation data. Often, the former is used for calibration and the latter for application and design flood estimation. This procedure neglects the dependence of the model parameterization on

# HESSD

10, 10379–10417, 2013

## Derived flood frequency analysis

U. Haberlandt and  
I. Radtke

Title Page

Abstract

Introduction

Conclusions

References

Tables

Figures

◀

▶

◀

▶

Back

Close

Full Screen / Esc

Printer-friendly Version

Interactive Discussion



**Derived flood  
frequency analysis**U. Haberlandt and  
I. Radtke[Title Page](#)[Abstract](#)[Introduction](#)[Conclusions](#)[References](#)[Tables](#)[Figures](#)[⏪](#)[⏩](#)[◀](#)[▶](#)[Back](#)[Close](#)[Full Screen / Esc](#)[Printer-friendly Version](#)[Interactive Discussion](#)

the input data. For instance, Bárdossy and Das (2008) show that using different rain-gauge networks for calibration and validation of a conceptual hydrologic model leads to significantly poorer performance compared to the case when unique networks are employed. Similar problems will occur if precipitation data from different sources are used for calibration and validation like rainfall information from point observations and weather radar (Heistermann and Kneis, 2011). In addition, if a hydrological model is calibrated using observed precipitation and runoff time series of high temporal resolution, e.g. hourly data, which are available often only for quite short time periods, the outcome might not be optimal for the simulation of floods with large return periods of 50, 100 or more years.

Alternatives to using only continuous hydrographs for model calibration are the utilization of statistical flow data like flow duration curves (Westerberg et al., 2011) or flow information in the spectral domain (Schaeffli and Zehe, 2009). When flood frequency estimation is the main goal special consideration should be given to the annual or partial peak flow series in addition to the hydrographs in the calibration process (Cameron et al., 1999; Lamb, 1999). The direct use of probability distributions of peak flow for model calibration is apparent. However, this idea has hardly been explored in research so far.

The objective of the paper is to compare different calibration strategies for a hydrological model operated on an hourly time step which is to be applied for derived flood frequency analysis. Event based and continuous observed hourly rainfall data as well as disaggregated daily rainfall and stochastically generated hourly rainfall data are used as input for the model. As output short hourly and longer daily continuous flow time series as well as probability distributions of annual maximum peak flow series are employed. It is hypothesized, that calibrating the hydrological model directly on the observed flood frequency distributions would provide the best results. This approach would have two advantages: statistical peak flow data have usually much longer records of registration than continuous high resolution flow data and they permit the direct use of stochastic rainfall data for calibration of the hydrological model.

## Derived flood frequency analysis

U. Haberlandt and  
I. Radtke

Title Page

Abstract

Introduction

Conclusions

References

Tables

Figures

⏪

⏩

◀

▶

Back

Close

Full Screen / Esc

Printer-friendly Version

Interactive Discussion



The paper is organized as follows. In Sect. 2 the methodology is presented including the precipitation models, the hydrological model and the calibration strategies. The data and study region are described in Sect. 3. In Sect. 4 the results of the different calibration strategies for the hydrological model are discussed. Finally, Sect. 5 gives a summary of the findings and conclusions.

## 2 Methods

### 2.1 Precipitation modeling

A stochastic space-time precipitation model, a statistic rainfall disaggregation model and a classical statistical design storm approach are employed here to provide precipitation data as input for rainfall–runoff modeling. These three rainfall generating methods are briefly introduced in the following.

#### 2.1.1 Stochastic precipitation model

A hybrid stochastic space-time precipitation model, consisting of two components is used for the generation of continuous hourly rainfall (Haberlandt et al., 2008). The first component represents a classical alternating renewal approach for the simulation of independent precipitation event series for several locations in the domain (Fig. 1). Wet spell duration ( $W$ ) and dry spell duration ( $D$ ) are modeled by general extreme value and Weibull distributions, respectively. The wet spell intensity ( $I$ ) is modeled using a Kappa distribution. The dependence between wet spell intensity and duration is described by a 2-D Frank Copula (De Michele and Salvadori, 2003). For disaggregation of the wet spells into hourly intensities a double exponential function with random peak time is used.

The second component of the precipitation model uses simulated annealing for a re-sampling of the univariate event time series (Bárdossy, 1998) with the objective to

reproduce the spatial dependence structure. The objective function includes three bi-variate criteria: (a) the probability of rainfall occurrence, (b) Pearson's correlation coefficient, and (c) the expected rainfall amount conditioned on rainfall occurrence at a neighboring station. The hybrid precipitation model has 11 parameters in total which are estimated for summer (May to October) and winter seasons (November to April) separately (Haberlandt et al., 2008).

### 2.1.2 Rainfall disaggregation model

Often the network density and record length of daily precipitation data is much better than for hourly data. So, one interesting alternative to stochastic synthesis of rainfall is the disaggregation of observed daily data into smaller time steps. For the disaggregation of daily rainfall a multiplicative random cascade model with exact mass conservation is used here (Güntner et al., 2001), which is a refinement of the model proposed by Olsson (1998).

The model divides the observed 24 h precipitation subsequently into two equal sized non-overlapping boxes, having one of the three possible states with certain transition probabilities  $P$ : wet/wet with  $P(x/1 - x)$ , wet/dry with  $P(1/0)$  or dry/wet with  $P(0/1)$ . Figure 2 shows a scheme of this approach. Here, the divisions are carried out from level zero (24 h) up to level five (45 min). Hourly rainfall is finally estimated by dividing the 45 min rainfall boxes into three uniform 15 min blocks and re-aggregating four blocks each from the time series back to 60 min. The parameters for the model are each estimated from the nearest hourly neighbor station and running the model backwards. This model does not distinguish between seasons, so only one set of parameters is estimated for each station, which is then assumed valid for the whole year.

The main problem with this disaggregation approach is the conservation of the space-time structure of precipitation. In the presented study a simple method is used to create spatial dependence. First, daily precipitation time series were disaggregated using the random cascade. In the next step for every day the station with the highest daily precipitation amount is selected. Their diurnal variation, obtained from disaggregation,

## Derived flood frequency analysis

U. Haberlandt and  
I. Radtke

[Title Page](#)

[Abstract](#)

[Introduction](#)

[Conclusions](#)

[References](#)

[Tables](#)

[Figures](#)

[⏪](#)

[⏩](#)

[◀](#)

[▶](#)

[Back](#)

[Close](#)

[Full Screen / Esc](#)

[Printer-friendly Version](#)

[Interactive Discussion](#)



is then applied on all other stations in the catchment. It is accepted here that this results in spatially more homogeneous than natural precipitation, which may lead to an overestimation of the observed floods.

### 2.1.3 Statistical design storm approach

5 The classical approach for the estimation of design floods based on rainfall–runoff modeling uses statistical storms derived from rainfall intensity-duration-frequency (IDF) curves. In Germany a regionalized version of IDF curves called KOSTRA is available (Bartels et al., 2005). KOSTRA provides statistical design storms on a raster for whole Germany with cell sizes of 8.45 km × 8.45 km for durations between 5 min and 72 h and  
10 for return periods from 0.5 yr up to 100 yr.

For rainfall–runoff modeling areal precipitation data instead of point values are necessary. Areal reduction factors are a common method to adjust point extreme rainfall to rainfall for larger areas. Here an areal reduction method especially derived for German conditions depending on catchment size and rainfall duration is applied (Verworn,  
15 2008).

Design storms with given duration, mean intensity and recurrence interval need a temporal rainfall distribution. In this study for short rainfall durations from 1 h to 3 h constant rainfall intensity is assumed. For longer rainfall durations a simple synthetic storm profile has been employed (Verworn, 1999), dividing the storm into three sections. The first section takes 20 % of the total rainfall depth in 25 % of the total storm  
20 duration. The second one takes 50 % of the total rainfall in the next 25 % of the duration, representing the maximum rainfall intensity. The last interval takes 30 % of the storm depth in the residual 50 % of the time.

## Derived flood frequency analysis

U. Haberlandt and  
I. Radtke

Title Page

Abstract

Introduction

Conclusions

References

Tables

Figures

◀

▶

◀

▶

Back

Close

Full Screen / Esc

Printer-friendly Version

Interactive Discussion



## 2.2 Rainfall runoff modeling

In this section first the applied rainfall runoff model is briefly presented and then the different strategies for model calibration and application based on the diverse input and output data sets are discussed.

### 2.2.1 Rainfall runoff model

For rainfall–runoff modeling the conceptual semi-distributed Model HEC-HMS (Feldmann, 2000) has been chosen, which comprises typical concepts used for flood simulations and allows sufficient fast computations with larger data sets. HEC-HMS offers different methods for the simulation of the processes of runoff formation, runoff concentration and flood routing. Additionally, several possibilities exist for the calculation of areal precipitation and potential evaporation. Here, the model is operated continuously at an hourly time step with the structure depicted in Fig. 3.

The soil moisture accounting (SMA) algorithm is used for runoff generation, the Clark Unit Hydrograph for the transformation of direct runoff, two linear reservoirs to consider interflow and base flow transformation, and a simple river routing is employed where the flows are only lagged in time. Snowmelt is calculated externally using the temperature index method. Potential evaporation is also computed externally using the method proposed by Turc-Wendling (Wendling et al., 1991), based on observed temperature and global radiation data. It is corrected according to the different vegetation types in the sub-catchments. Then the mean monthly values over the simulation period are used as input for HEC-HMS scaled according to the simulation time step. This simple approach can be justified here by the comparison character of the model application. Actual evapotranspiration is simulated in HEC-HMS depending on the potential evapotranspiration and the water availability from canopy, surface and soil storages. To account for spatial heterogeneity of climate data and basin characteristics the catchments are spatially divided into several sub-catchments and river reaches. The input

## HESSD

10, 10379–10417, 2013

### Derived flood frequency analysis

U. Haberlandt and  
I. Radtke

Title Page

Abstract

Introduction

Conclusions

References

Tables

Figures

◀

▶

◀

▶

Back

Close

Full Screen / Esc

Printer-friendly Version

Interactive Discussion





data precipitation and potential evaporation are estimated as areal averages for the sub-catchments using Thiessen interpolation from station data.

## 2.2.2 Strategies for model calibration

The calibration of HEC-HMS is done automatically in lumped mode for the catchment under investigation using the PEST algorithm (Doherty, 2005). Five sensitive parameters are selected for calibration comprising the five recession constants of the sub-surface storages and the Clark hydrograph (see Fig. 3). As objective functions the squared sum of deviations between observed and simulated flows is used. For performance assessment the Nash–Sutcliffe–Criterion and the Bias are employed. Figure 4 gives an overview of the calibration strategies used in this investigation. Five calibration strategies are shown, which can be distinguished by their different input and output data. Each calibration strategy leads to a unique parameter set, indicated by the letters A through E.

Parameter set A is obtained with event based calibration using a number of observed rainfall–runoff-events simultaneously. Since the initial conditions are unknown, storage contents for each event are also included in the calibration. Validation for this parameter set is done using continuous modeling based on data sets from strategy B.

Parameter set B is estimated by calibration of the model using continuous hourly observed precipitation and discharge data for the short observation period of some years. Validation of the resulting parameter set is done by split sampling for another couple of years.

The calibration of the model to obtain parameter set C is carried out using continuous hourly simulations with disaggregated precipitation from daily data and observed mean daily discharge. The disaggregated precipitation data have statistical intra-day variations but conserve the daily totals. So, for direct comparison of simulated and observed flows only daily data can be used. Since hourly precipitation results from a statistical disaggregation model 10 realizations are generated and the median of the 10 simulated flow time series aggregated to daily values is used for calibration against

# HESSD

10, 10379–10417, 2013

## Derived flood frequency analysis

U. Haberlandt and  
I. Radtke

[Title Page](#)

[Abstract](#)

[Introduction](#)

[Conclusions](#)

[References](#)

[Tables](#)

[Figures](#)

[⏪](#)

[⏩](#)

[◀](#)

[▶](#)

[Back](#)

[Close](#)

[Full Screen / Esc](#)

[Printer-friendly Version](#)

[Interactive Discussion](#)



observations. Validation of parameter set C is done using split sampling on the longer daily flow time series and using the shorter hourly hydrographs from strategy B. An advantage of this calibration strategy using daily data is the availability of longer observation records comprising often more than 30 yr and denser precipitation networks.

5 For the calibration of the model to estimate parameter set D disaggregated precipitation and the observed flood frequency distributions of the same time period are utilized. Again, 10 realizations of disaggregated precipitation data are used for hydrological simulations. Independent flood events are selected from the continuously simulated flows using a minimum of 10 days intra-event time considering the catchment sizes in this study (see Sect. 3). Annual series (January to December), summer series (Mai to Oc-  
10 tober) and winter series (November to April) of peak flows are compiled from observed and simulated data. To mitigate sampling errors, a theoretic probability distribution is fitted to the series of observed and simulated peak flows. Here the generalized extreme value distribution (GEV) with parameter estimation based on L-moments is chosen (Hosking and Wallis, 1997). For calibration a number of recurrence intervals are selected for which flow quantiles are estimated from the GEV distributions. Theoretical quantiles obtained from the distributions fitted to observed peak flow series are considered as “observations”. The medians of the theoretical quantiles from the distributions fitted to the 10 simulated series are considered as “simulations”. The pairs of  
20 recurrence intervals and quantiles build the supporting points in the objective function. For calibration the distributions of annual, winter and summer seasons are considered simultaneously and the supporting points are weighted proportionally to their return periods. Validation of parameter set D is done using 10 different precipitation realizations and by evaluations of continuous simulation considering the observed periods from strategy B. The advantage of this strategy is the direct use of hourly disaggregated  
25 rainfall and of observed flood quantiles in the calibration process.

The last calibration strategy to estimate parameter set E uses continuous stochastic rainfall and observed flood frequency distributions. The procedure of parameter estimation is basically the same as for parameter set D. The main difference is the missing

## HESSD

10, 10379–10417, 2013

### Derived flood frequency analysis

U. Haberlandt and  
I. Radtke

[Title Page](#)

[Abstract](#)

[Introduction](#)

[Conclusions](#)

[References](#)

[Tables](#)

[Figures](#)

[⏪](#)

[⏩](#)

[◀](#)

[▶](#)

[Back](#)

[Close](#)

[Full Screen / Esc](#)

[Printer-friendly Version](#)

[Interactive Discussion](#)



time reference of the stochastic rainfall and the possibility to generate time series of any length. Therefore all observed annual and seasonal maximum floods can be used for fitting the “observed” GEV. Using very long time series may reduce the sampling error but would require more computation time. So, considering that the full time series are employed for the automatic calibration process with many iterations the length has been restricted here to 100 yr. Again, 10 realizations are generated for model calibration in order to consider the uncertainty of the precipitation process. The validation of parameter set E is done using another 10 precipitation realizations and the continuous hourly data from strategy B.

### 2.2.3 Strategies for estimation of design floods

Considering the five estimated parameter sets A to E and the different precipitation forcings several alternatives for the application of the hydrological model to estimate design flows are possible. Figure 5 shows the strategies which are used and compared here regarding estimation performance and uncertainty.

For the event based rainfall–runoff modeling the statistical KOSTRA precipitation data are applied (see Sect. 2.1.3) assuming equal return periods for rainfall and resulting peak flow. Considering catchment size, the model is run for different storm durations around the time of concentration, while only that hydrograph is kept, which produces the largest peak. Regarding initial conditions the model starts up with mean storage contents for soil and groundwater reservoirs obtained from the calibration over all events and a base flow which is equal to the long term mean discharge. Uncertainty in initial conditions is considered by varying the storage contents by plus/minus 10% and 20% around the mean. Uncertainty in precipitation is considered here taking into account an error of up to plus/minus 20% according to Bartels et al. (2005) for the KOSTRA data. So, all together 15 model runs are used for the estimation of the design flow and its uncertainty at each return period. The whole procedure is applied for the two parameter sets A and B.

## Derived flood frequency analysis

U. Haberlandt and  
I. Radtke

[Title Page](#)

[Abstract](#)

[Introduction](#)

[Conclusions](#)

[References](#)

[Tables](#)

[Figures](#)

[⏪](#)

[⏩](#)

[◀](#)

[▶](#)

[Back](#)

[Close](#)

[Full Screen / Esc](#)

[Printer-friendly Version](#)

[Interactive Discussion](#)



## Derived flood frequency analysis

U. Haberlandt and  
I. Radtke

Title Page

Abstract

Introduction

Conclusions

References

Tables

Figures

◀

▶

◀

▶

Back

Close

Full Screen / Esc

Printer-friendly Version

Interactive Discussion



For continuous rainfall–runoff modeling disaggregated and stochastic precipitation data are used. The estimation of the design flood is done based on fitted GEV distributions to simulated peak flow series similar as for parameter estimation. Here the 20 rainfall realizations from calibration and validation together are used to consider uncertainty. Rainfall-runoff modeling with disaggregated precipitation data is done using the parameter sets B, C and D. If the stochastic precipitation data are used as model input parameter sets B and E are employed.

### 3 Study area and data

The investigations are carried out for three mesoscale catchment within the Bode River basin in northern Germany: the Silberhütte catchment with a drainage area of 105 km<sup>2</sup>, the Mahndorf catchment with an area of 168 km<sup>2</sup> and the Trautenstein catchment with an area of 39.1 km<sup>2</sup> (see Fig. 6).

The Bode region has elevations between 1140 m a.s.l. at the top of the Brocken Mountain and about 80 m a.s.l. at the lowest point where the Bode River flows into the Saale River. Mean annual rainfall varies between 1700 mm yr<sup>-1</sup> and 500 mm yr<sup>-1</sup>. Floods are generated either by frontal rainfall, frontal rainfall on snow smelt or convective storms.

Observed precipitation data at an hourly time step are available for about 14 yr of the time period from 1993 to 2006 and at a daily time step in the period between 1968 and 2005. Most of the hourly stations are only available for the summer season. The climate data temperature and radiation are available for the same two temporal resolutions and time periods at three and two locations, respectively. Observed discharge is available as daily flows and monthly peak flow series within the period from 1948 to 2005 with length between 33 and 56 yr for the three streamflow gauges. In addition hourly flow time series are available for the period from 1998 to 2004. Table 1 list the volume of the data, which can be utilized for calibration, validation and application for each calibration strategy.

**Derived flood  
frequency analysis**U. Haberlandt and  
I. Radtke[Title Page](#)[Abstract](#)[Introduction](#)[Conclusions](#)[References](#)[Tables](#)[Figures](#)[⏪](#)[⏩](#)[◀](#)[▶](#)[Back](#)[Close](#)[Full Screen / Esc](#)[Printer-friendly Version](#)[Interactive Discussion](#)

The strategies A and B, which use hourly data, have to rely on only seven years of observations for both calibration and validation. The network density is increased here by employing daily rainfall from the non-recording network disaggregated by rescaling the hourly rainfall profile from the nearest recording station. An observation period of 33 to 35 yr in total is available when daily flow and precipitation data are employed (strategies C and D). If stochastic rainfall is used in strategy E the maximum observed record length of about 50 yr for peak flow series can be utilized. Also in this case the network density is increased to the same degree as in strategy A and B by using rescaled hourly stochastic rainfall at the locations of daily stations from the nearest recording station. Hydrologic modeling is done in strategy E with 100 yr of stochastic rainfall even if the reference time series for calibration and application are shorter. This requires providing climate data for 100 yr at an hourly time step. For calculation of potential evapotranspiration the observed mean monthly values are used (see Sect. 2.2.1); for snowmelt simulations observed time series of temperature over 25 yr are simply resampled four times to provide the input. Strategies D and E use for calibration and validation the same data periods but different realizations. In addition validation is carried out for all strategies on observed hourly flow time series.

#### 4 Analyses and results

In this section first the performances of the stochastic rainfall model and the statistic disaggregation approach are briefly presented. Then the results of calibration and validation of the hydrological model using the different data and parameter sets are discussed. The hydrological model is applied for estimation of flood frequency distributions and design floods to compare the performance and uncertainty of the different alternatives.

## 4.1 Performance of precipitation modeling

For validation of the stochastic precipitation model 10 realizations of hourly rainfall, each 100 yr in length are generated for all hourly stations. For validation of the disaggregation model also 10 realizations of hourly rainfall are disaggregated using aggregated daily rainfall from the same hourly stations.

Tables 2 und 3 show comparisons between observed and simulated event characteristics exemplarily for three rainfall stations for the stochastic rainfall model and the disaggregation model, respectively. Note, that only those rainfall characteristics are selected here for validations, which are not used for the estimation of the parameters of the precipitation models. For stochastic rainfall good agreement between simulated and observed statistics is reached. Some underestimation of the number of events and a small overestimation of the event volume occurs. While the standard deviation is also reproduced quite well, the skewness is reproduced poorly.

For disaggregated rainfall sufficient agreement between observed and simulated statistics is found. The number of events is overestimated and the event volume is underestimated. Higher order moments are only roughly reproduced. Comparing the results between both models shows that the pure stochastic rainfall model has a better performance as the statistics disaggregation approach except for the simulation of the skewness. Note that the observed statistics differ between stochastic modeling and disaggregation approach because for disaggregation the gaps in the data had to be filled prior to the application.

In addition a frequency analysis is carried out on the annual maximum precipitation series for observed and simulated rainfall using different durations. Selected results are presented in Fig. 7. For the disaggregation approach rainfall can only be provided for the observed period, which is very short here for precipitation validation. For the stochastic precipitation model rainfall can be generated for longer periods but can only be compared to the short observation statistic. It can be seen, that the observed values are plotted mostly within the range of the simulated realizations. For disaggregated

HESSD

10, 10379–10417, 2013

### Derived flood frequency analysis

U. Haberlandt and  
I. Radtke

Title Page

Abstract

Introduction

Conclusions

References

Tables

Figures

◀

▶

◀

▶

Back

Close

Full Screen / Esc

Printer-friendly Version

Interactive Discussion



rainfall the range among the 10 realizations is somewhat larger as for the pure synthetic rainfall realizations. For the stochastic model a slight overestimation of the observed extreme values occurs for larger return periods and durations. Considering the short observation periods it is difficult to validate the models regarding the synthesis of more extreme rainfall intensities. This will be further addressed with hydrological modeling.

More information about application and validation of the precipitation models especially regarding the conservation of spatial consistence of rainfall is provided in Haberlandt et al. (2008) and about the disaggregation approach in Ebner von Eschenbach et al. (2008).

## 4.2 Performance of the hydrological model and estimation of design floods

For hydrological modeling the data are employed as explained in Sects. 2 and 3. For each catchment parameter estimation is done automatically using the different data sets according to Fig. 4. Calibration succeeds for all strategies and catchments quite well. Validation of the hydrological model is done on one hand using split sampling (parameter sets B and C) or using additionally precipitation realizations (parameter sets D and E). On the other hand all parameter sets are validated using continuous observed precipitation and discharge time series as used for calibration and validation of parameter set B. The results are shown in Table 4. It can be seen that in general for all catchments and with all parameter sets the performance is quite well considering the Nash-Sutcliffe-Criterion. Only for the Mahndorf catchment the NSC values are lower as for the other two catchments. However, there is a significant bias, which is probably due to the calibration focusing on floods. This is not seen as a very critical issue here considering the purpose of the simulation for derived flood frequency analysis. It is important to notice, that the parameter sets D and E obtained from calibration on extreme value distributions perform equally well for the reproduction of the continuous hydrographs as the parameter set B obtained directly using those data. Also parameter sets A and C obtained from calibration on single events and daily discharge are suitable to reproduce the hourly flow hydrographs. Figure 8 shows the simulated hydrographs

### Derived flood frequency analysis

U. Haberlandt and  
I. Radtke

Title Page

Abstract

Introduction

Conclusions

References

Tables

Figures

◀

▶

◀

▶

Back

Close

Full Screen / Esc

Printer-friendly Version

Interactive Discussion



**Derived flood  
frequency analysis**U. Haberlandt and  
I. Radtke[Title Page](#)[Abstract](#)[Introduction](#)[Conclusions](#)[References](#)[Tables](#)[Figures](#)[⏪](#)[⏩](#)[◀](#)[▶](#)[Back](#)[Close](#)[Full Screen / Esc](#)[Printer-friendly Version](#)[Interactive Discussion](#)

using observed precipitation for the validation period for four of the five different parameter sets. The visual assessment confirms the findings of Table 4. The simulated hydrographs for all parameter sets are quite similar. Higher peak flows were simulated when the model is calibrated on the extreme value distributions (parameter sets D and E). This is especially true for parameter set D, which results from disaggregated rainfall, considering the three highest peaks in the simulation period. The reason for this might be the forced spatial consistent timing of rainfall peaks for all stations involved in the disaggregation approach (see Sect. 2.1.1). Based on the above validation all parameter sets are considered generally suitable for hydrological modeling.

After this initial validation of the hydrological model design floods are estimated using all parameter sets successively for the three catchments. First, the results are discussed more in detail for the Silberhütte catchment. Then, a comparison of the 50 yr design flood estimation for all catchments and parameter sets is presented.

For single event rainfall–runoff modeling the parameter sets A and B based on the KOSTRA precipitation statistics are used. In Fig. 9 the results for the Silberhütte catchment are shown. A GEV distribution is fitted to the observed annual maximum peak flows for a 56 yr period and extrapolated up to a return period of 100 yr. Note, that the highest observed peak flow belongs to the exceptional flood of 1994 with a larger return period as associated according to the sample size (LAU, 1995). Also, the second highest observed peak flow probably belongs to a flood with a higher recurrence interval. The hydrological model is run for design storms from KOSTRA for the return periods of 2, 5, 10, 25 and 100 yr. The bars enclose the 90 %-confidence interval, which represents the 5 % and 95 % empirical quantiles estimated from the 15 model runs each (see Sect. 2). Comparing observations, i.e. the fitted GEV to observed peak flows, with the simulated range of design flows a good agreement can be seen. However the extend of the bars is wide, indicating quite a bit of uncertainty. The range of simulations from parameter set A covers better the observations but is larger as for parameter set B. Also with parameter set B smaller design floods are estimated. A possible reason for that might be the calibration of parameter set B for continuous flow series trying to simulate



the total hydrograph reasonable well, not only the flood events as for parameter set A. The main results are consistent also for the other two catchments.

The results from design flood estimation with continuous rainfall–runoff modeling and disaggregated precipitation for the Silberhütte catchment are shown in Fig. 10. The hydrological model is run continuously over a period of 36 yr, where daily precipitation for disaggregation was available. GEV distributions are fitted to the observed and simulated annual maximum peak flows for this period and extrapolated here only up to the 50 yr recurrence interval considering the restricted data period. The simulated range of peak flows encloses the 90 %-confidence limits, which represents the 5 % and 95 % empirical quantiles estimated for selected return periods from the 20 realizations. Similar ranges of simulated flows can be seen for parameter sets B and C. However, smaller peak flows are obtained for parameter set C, where the model has been calibrated on daily hydrographs, which is a reasonable outcome. The uncertainty band which results from using parameter set D is smallest, but the range does not cover the observations completely and the slope is somewhat different from the observed distribution. This outcome might be an artifact of the calibration. Again, similar results were obtained for the other two catchments.

The results using stochastic precipitation to estimate the design floods are shown in Fig. 11 for the Silberhütte catchment. The hydrological model is run continuously over a period of 100 yr for 20 realizations of stochastic rainfall. GEV distributions are fitted to observed peak flows for the total observation period of 56 yr and to simulated peak flows for each realization of 100 yr length. The 90 %-confidence limits are set up again using 5 % and 95 % empirical quantiles for selected return periods from the total number of 20 realizations. Applying the pre-calibrated model based on observed precipitation with parameter set B leads to an overestimation of peak flows with a wide uncertainty range. The uncertainty can be reduced considerably if calibration on the extreme value distribution of observed flows is carried out and parameter set E is applied instead. The simulated peak flow distributions cover the observed one very well in this case. Again, similar results were obtained for the other two catchments.

**Derived flood frequency analysis**

U. Haberlandt and  
I. Radtke

Title Page

Abstract

Introduction

Conclusions

References

Tables

Figures



Back

Close

Full Screen / Esc

Printer-friendly Version

Interactive Discussion



## Derived flood frequency analysis

U. Haberlandt and  
I. Radtke

Title Page

Abstract

Introduction

Conclusions

References

Tables

Figures

⏪

⏩

◀

▶

Back

Close

Full Screen / Esc

Printer-friendly Version

Interactive Discussion



Finally, to sum up the results, a comparison for the estimation of the 50 yr flood including uncertainty bands for the different calibration strategies and all three catchments is presented in Fig. 12. In order to consider the error from the restricted length of the observed flow records a parametric bootstrap is applied to estimate the confidence intervals for the estimated 50 yr flood from observations (Davison and Hinkley, 2005). Note, that the uncertainty bands of the observed floods differ slightly according to the different sample sizes used in calibration and application as reference for the three cases: statistic design rainfall (KOSTRA) with about 50 yr, disaggregated rainfall (DISAG) with about 35 yr and stochastic rainfall (STOCH) again with about 50 yr. The classical calibration using single events with design storms (KOSTRA and parameter set A) provides good estimations for the Silberhütte and Mahndorf catchments, but an overestimation for the Trautenstein catchment. However, the confidence intervals are widest for this parameter set. Using parameter set B obtained from calibration with short hourly hydrographs for KOSTRA rainfall leads to less accurate estimations but with somewhat smaller error bands. If parameter set B is applied with disaggregated rainfall or with stochastic rainfall the estimation performance is generally poor. Parameter set C, which was obtained by calibration on daily flow data performs not much better than parameter set B for disaggregated rainfall but with smaller uncertainty. Most suitable calibration strategies for the estimation of the design flood seem to be the ones which use the observed flood peak distributions together with the synthetic rainfall data for calibration. These are the cases based on parameter set D with disaggregated precipitation and parameter set E with stochastic rainfall. It is remarkable, that for all catchments the uncertainty bands can be reduced considerably if parameter sets D and E are applied.

## 5 Summary and conclusions

Several calibration strategies of a hydrological model have been compared regarding its suitability for derived flood frequency analyses. Event based and continuous



**Derived flood  
frequency analysis**U. Haberlandt and  
I. Radtke[Title Page](#)[Abstract](#)[Introduction](#)[Conclusions](#)[References](#)[Tables](#)[Figures](#)[⏪](#)[⏩](#)[◀](#)[▶](#)[Back](#)[Close](#)[Full Screen / Esc](#)[Printer-friendly Version](#)[Interactive Discussion](#)

short larger floods may have the wrong plotting position and the calibration will over-estimate the floods. Special problems could also arise from different flood generating mechanisms in a catchment which may lead to step changes in the flood frequency curves (Rogger et al., 2012), which then needs to be considered in distribution fitting and model calibration. The uncertainty of the precipitation model parameters are not considered here and may increase the total error bands. Also, the uncertainty resulting from the hydrological model parameter sets is not discussed here. Further analyses have shown that this error is larger than the variability which comes from the different rainfall realizations (Radtke, 2012).

One main purpose of this paper was to introduce the idea of calibrating a hydrological model based on flood frequency distributions using stochastic rainfall and to evaluate it against classical strategies in an empirical case study. The results have shown the suitability of this approach. However, more research is required to further test this model calibration strategy on stochastic input and output data involving diverse catchments and different hydrological models. Generally, this approach may also be suitable in climate impact studies where hydrological models could be calibrated directly using the simulated precipitation from regional climate models, which would allow some kind of implicit bias correction. Such an application of the model calibration strategy is currently being under investigation.

*Acknowledgements.* Research leading to this paper was partly supported by the German Federal Ministry of Education and Research (BMBF) in the framework of the RIMAX program (FKZ: 0 330 684). The authors thank the water authorities from Saxony-Anhalt (LHW) and the German Weather Service (DWD) for providing the hydrological and meteorological data, respectively.

## References

- Aronica, G. T. and Candela, A.: Derivation of flood frequency curves in poorly gauged Mediterranean catchments using a simple stochastic hydrological rainfall–runoff model, *J. Hydrol.*, 347, 132–142, 2007.
- 5 Bárdossy, A.: Generating precipitation time series using simulated annealing, *Water Resour. Res.*, 34, 1737–1744, 1998.
- Bárdossy, A. and Das, T.: Influence of rainfall observation network on model calibration and application, *HESS*, 12, 77–89, 2008.
- Bartels, H., Dietzer, B., Malitz, G., Albrecht, F. M., and Guttenberger, J.: Fortschreibungsbericht KOSTRA-DWD-2000 – Starkniederschlagshöhen für Deutschland (1951–2000), Deutscher Wetterdienst – Abteilung Hydrometeorologie, Offenbach am Main, 2005.
- 10 Blazkova, S. and Beven, K.: Flood frequency estimation by continuous simulation of subcatchment rainfalls and discharges with the aim of improving dam safety assessment in a large basin in the Czech Republic, *J. Hydrol.*, 292, 153–172, 2004.
- 15 Boughton, W. and Droop, O.: Continuous simulation for design flood estimation – a review, *Environ. Modell. Softw.*, 18, 309–318, doi:10.1016/S1364-8152(03)00004-5, 2003.
- Cameron, D. S., Beven, K. J., Tawn, J., Blazkova, S., and Naden, P.: Flood frequency estimation by continuous simulation for a gauged upland catchment (with uncertainty), *J. Hydrol.*, 219, 169–187, 1999.
- 20 Davison, A. C. and Hinkley, D. V.: *Bootstrap Methods and their Applications*, 7th Edn., Cambridge University Press, New York, 582 pp., 2005.
- De Michele, C. and Salvadori, G.: A Generalized Pareto intensity–duration model of storm rainfall exploiting 2-Copulas, *J. Geophys. Res.*, 108, 4067, doi:10.1029/2002JD002534, 2003.
- Doherty, J.: *PEST: Model Independent Parameter Estimation. Fifth edition of user manual*, Watermark Numerical Computing, Brisbane, Australia, 2005.
- 25 Ebner von Eschenbach, A.-D., Haberlandt, U., Buchwald, I., and Belli, A.: Ermittlung von Bemessungsabflüssen mit N-A-Modellierung und synthetischem Niederschlag, *Wasserwirtschaft*, 11, 19–23, 2008.
- Feldmann, A. D.: *Hydrologic Modeling System HEC-HMS, Technical Reference Manual*, US Army Corps of Engineers, Hydrologic Engineering Center, Davis, CA, 2000.
- 30

## HESSD

10, 10379–10417, 2013

### Derived flood frequency analysis

U. Haberlandt and  
I. Radtke

Title Page

Abstract

Introduction

Conclusions

References

Tables

Figures

◀

▶

◀

▶

Back

Close

Full Screen / Esc

Printer-friendly Version

Interactive Discussion



## Derived flood frequency analysis

U. Haberlandt and  
I. Radtke

Title Page

Abstract

Introduction

Conclusions

References

Tables

Figures

◀

▶

◀

▶

Back

Close

Full Screen / Esc

Printer-friendly Version

Interactive Discussion

Grimaldi, S., Petroselli, A., and Serinaldi, F.: Design hydrograph estimation in small and ungauged watersheds: continuous simulation method vs. event-based approach, *Hydrol. Process.*, 26, 3124–3134, doi:10.1002/hyp.8384, 2011.

Grimaldi, S., Petroselli, A., and Serinaldi, F.: A continuous simulation model for design hydrograph estimation in small and ungauged watersheds, *Hydrolog. Sci. J.*, 57, 1035–1051, doi:10.1080/02626667.2012.702214, 2012.

Güntner, A., Olsson, J., Calver, A., and Gannon, B.: Cascade-based disaggregation of continuous rainfall time series: the influence of climate, *Hydrol. Earth Syst. Sci.*, 5, 145–164, doi:10.5194/hess-5-145-2001, 2001.

Haberlandt, U., Ebner von Eschenbach, A.-D., and Buchwald, I.: A space-time hybrid hourly rainfall model for derived flood frequency analysis, *Hydrol. Earth Syst. Sci.*, 12, 1353–1367, doi:10.5194/hess-12-1353-2008, 2008.

Heistermann, M. and Kneis, D.: Benchmarking quantitative precipitation estimation by conceptual rainfall–runoff modeling, *Water Resour. Res.*, 47, W06514, doi:10.1029/2010wr009153, 2011.

Hosking, J. R. M. and Wallis, J. R.: *Regional frequency analysis: an approach based on L-moments*, Cambridge University Press, NY, 1997.

Lamb, R.: Calibration of a conceptual rainfall–runoff model for flood frequency estimation by continuous simulation, *Water Resour. Res.*, 35, 3103–3114, doi:10.1029/1999wr900119, 1999.

LAU: Das Frühjahrshochwasser vom April 1994 in den Flusseinzugsgebieten der Saale und Bode in Sachsen-Anhalt. *Berichte des Landesamtes für Umweltschutz Sachsen-Anhalt*, 1995.

Moretti, G. and Montanari, A.: Inferring the flood frequency distribution for an ungauged basin using a spatially distributed rainfall-runoff model, *Hydrol. Earth Syst. Sci.*, 12, 1141–1152, doi:10.5194/hess-12-1141-2008, 2008.

Olsson, J.: Evaluation of a scaling cascade model for temporal rain-fall disaggregation, *Hydrol. Earth Syst. Sci.*, 2, 19–30, doi:10.5194/hess-2-19-1998, 1998.

Radtke, I.: *Methoden zur abgeleiteten Hochwasserstatistik unter Angabe von Unsicherheiten*, PhD thesis, Civil Faculty of Civil Engineering and Geodetic Sciences, Leibniz University Hannover, 2012.

## Derived flood frequency analysis

U. Haberlandt and  
I. Radtke

[Title Page](#)

[Abstract](#)

[Introduction](#)

[Conclusions](#)

[References](#)

[Tables](#)

[Figures](#)

[⏪](#)

[⏩](#)

[◀](#)

[▶](#)

[Back](#)

[Close](#)

[Full Screen / Esc](#)

[Printer-friendly Version](#)

[Interactive Discussion](#)



- Rogger, M., Kohl, B., Pirkl, H., Viglione, A., Komma, J., Kirnbauer, R., Merz, R., and Blöschl, G.: Runoff models and flood frequency statistics for design flood estimation in Austria – Do they tell a consistent story?, *J. Hydrol.*, 456–457, 30–43, doi:10.1016/j.jhydrol.2012.05.068, 2012.
- 5 Schaefli, B. and Zehe, E.: Hydrological model performance and parameter estimation in the wavelet-domain, *Hydrol. Earth Syst. Sci.*, 13, 1921–1936, doi:10.5194/hess-13-1921-2009, 2009.
- Seibert, J. and Beven, K. J.: Gauging the ungauged basin: how many discharge measurements are needed?, *Hydrol. Earth Syst. Sci.*, 13, 883–892, doi:10.5194/hess-13-883-2009, 2009.
- 10 Singh, S. K. and Bárdossy, A.: Calibration of hydrological models on hydrologically unusual events, *Adv. Water Resour.*, 38, 81–91, doi:10.1016/j.advwatres.2011.12.006, 2012.
- Verhoest, N. E. C., Vandenberghe, S., Cabus, P., Onof, C., Meca-Figueras, T., and Jameledine, S.: Are stochastic point rainfall models able to preserve extreme flood statistics?, *Hydrol. Process.*, 24, 3439–3445, doi:10.1002/hyp.7867, 2010.
- 15 Verworn, H.-R.: Die Anwendung von Kanalnetzmodellen in der Stadtentwässerung, *Schriftenreihe für Stadtentwässerung und Gewässerschutz*, Vol. 18, SuG-Verlagsgesellschaft, Hannover, 1999.
- Verworn, H.-R.: Flächenabhängige Abminderung statistischer Regenwerte, *Korrespondenz Wasserwirtschaft*, 1, 493–498, 2008.
- 20 Viglione, A. and Blöschl, G.: On the role of storm duration in the mapping of rainfall to flood return periods, *Hydrol. Earth Syst. Sci.*, 13, 205–216, doi:10.5194/hess-13-205-2009, 2009.
- Viglione, A., Castellarin, A., Rogger, M., Merz, R., and Blöschl, G.: Extreme rainstorms: comparing regional envelope curves to stochastically generated events, *Water Resour. Res.*, 48, W01509, doi:10.1029/2011wr010515, 2012.
- Wendling, U., Schellin, H.-G., and Thomä, M.: Bereitstellung von täglichen Informationen zum Wasserhaushalt des Bodens für die Zwecke der agrarmeteorologischen Beratung, *Z. Meteorologie*, 41, 468–474, 1991.
- 25 Westerberg, I. K., Guerrero, J.-L., Younger, P. M., Beven, K. J., Seibert, J., Halldin, S., Freer, J. E., and Xu, C.-Y.: Calibration of hydrological models using flow-duration curves, *Hydrol. Earth Syst. Sci.*, 15, 2205–2227, doi:10.5194/hess-15-2205-2011, 2011.

# HESSD

10, 10379–10417, 2013

## Derived flood frequency analysis

U. Haberlandt and  
I. Radtke

**Table 1.** Average data volume available for calibration, validation and application for hydrological modeling depending on calibration strategy (see Fig. 4).

Calibration strategy	Data for calibration	Data for validation	Application
A	13 events	No separate events	Statistical rainfall
B	4 yr	3 yr	see A, D or E
C	15 yr	20 yr	see A, D, or E
D	35 yr (10 realizations)	35 yr (10 realizations)	35 yr (20 realizations)
E	50/100 yr* (10 realizations)	50/100 yr* (10 realizations)	100 yr (20 realizations)

\* about 50 yr of discharge data and 10 realizations a 100 yr of precipitation data.

[Title Page](#)[Abstract](#)[Introduction](#)[Conclusions](#)[References](#)[Tables](#)[Figures](#)[⏪](#)[⏩](#)[◀](#)[▶](#)[Back](#)[Close](#)[Full Screen / Esc](#)[Printer-friendly Version](#)[Interactive Discussion](#)



# HESSD

10, 10379–10417, 2013

## Derived flood frequency analysis

U. Haberlandt and  
I. Radtke

**Table 2.** Event characteristics for three selected rainfall stations (see Fig. 6) from 14 yr observed rainfall (OBS) and 10 × 100 yr stochastic generated rainfall (STOCH); OBS statistics estimated from data with missing values as gaps.

Station	No. of events per year [-]		Average event volume [mm]		Std. Dev. of event volume [mm]		Skewness of event volume [-]	
	OBS*	STOCH	OBS	STOCH	OBS	STOCH	OBS	STOCH
Wernigerode	212	181	3.55	3.64	5.33	5.31	4.85	7.05
Harzgerode	169	164	3.37	3.43	5.02	5.00	6.19	7.92
Braunlage	272	240	5.59	6.06	8.86	9.47	4.77	5.11

\* adjusted according to relative gap contribution to observation period.

[Title Page](#)[Abstract](#)[Introduction](#)[Conclusions](#)[References](#)[Tables](#)[Figures](#)[⏪](#)[⏩](#)[◀](#)[▶](#)[Back](#)[Close](#)[Full Screen / Esc](#)[Printer-friendly Version](#)[Interactive Discussion](#)

# HESSD

10, 10379–10417, 2013

## Derived flood frequency analysis

U. Haberlandt and  
I. Radtke

**Table 3.** Event characteristics for three selected rainfall stations (see Fig. 6) from 14 yr observed rainfall (OBS) and 10 × 14 yr disaggregated rainfall (DISAG); OBS statistics estimated from data with missing values replaced by data from neighbor stations.

Station	No. of events per year [-]		Average event volume [mm]		Std. Dev. of event volume [mm]		Skewness of event volume [-]	
	OBS	DISAG	OBS	DISAG	OBS	DISAG	OBS	DISAG
Wernigerode	165	206	3.77	3.07	6.04	4.44	7.29	7.51
Harzgerode	163	202	3.37	2.72	5.04	3.79	6.14	7.07
Braunlage	252	297	5.63	4.77	8.92	6.85	4.79	4.29

[Title Page](#)
[Abstract](#)
[Introduction](#)
[Conclusions](#)
[References](#)
[Tables](#)
[Figures](#)
[Back](#)
[Close](#)
[Full Screen / Esc](#)
[Printer-friendly Version](#)
[Interactive Discussion](#)

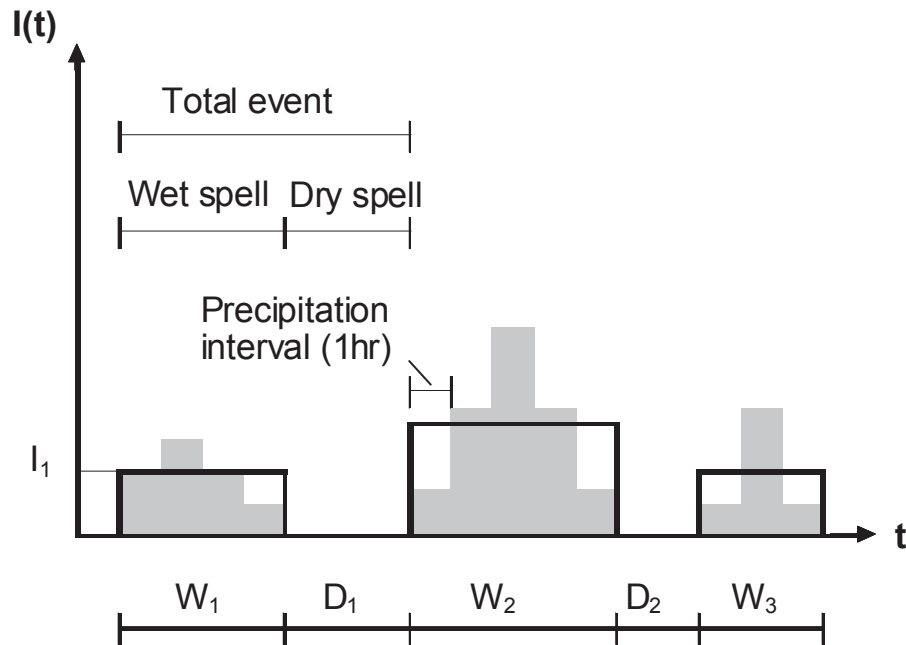

## Derived flood frequency analysis

U. Haberlandt and  
I. Radtke

**Table 4.** Validation of the calibrated parameter sets.

	Calibration period: Nov 1997–Oct 2001					Validation period: Nov 2001–Oct 2004				
	Parameter set					Parameter set				
	A	B	C	D	E	A	B	C	D	E
Silberhütte										
NSC [–]	0.86	0.87	0.86	0.85	0.83	0.82	0.83	0.82	0.86	0.81
Bias [%]	13.4	13.5	13.4	13.8	13.5	20.4	20.2	20.4	20.0	20.2
Trautenstein										
NSC [–]	0.84	0.86	0.84	0.85	0.81	0.82	0.82	0.78	0.82	0.79
Bias [%]	–1.99	–2.28	–1.71	–2.26	–2.39	–22.7	–22.3	–23.0	–22.4	–22.1
Mahndorf										
NSC [–]	0.52	0.72	0.77	0.46	0.44	0.63	0.78	0.67	0.53	0.52
Bias [%]	–14.6	–16.6	–18.5	–16.1	–14.7	–7.04	–6.90	–5.45	–7.19	–7.20

[Title Page](#)
[Abstract](#)
[Introduction](#)
[Conclusions](#)
[References](#)
[Tables](#)
[Figures](#)
[⏪](#)
[⏩](#)
[◀](#)
[▶](#)
[Back](#)
[Close](#)
[Full Screen / Esc](#)
[Printer-friendly Version](#)
[Interactive Discussion](#)

**Fig. 1.** Scheme of precipitation event time series (after Haberlandt et al., 2008).

## Derived flood frequency analysis

U. Haberlandt and  
I. Radtke

Title Page

Abstract

Introduction

Conclusions

References

Tables

Figures

◀

▶

◀

▶

Back

Close

Full Screen / Esc

Printer-friendly Version

Interactive Discussion

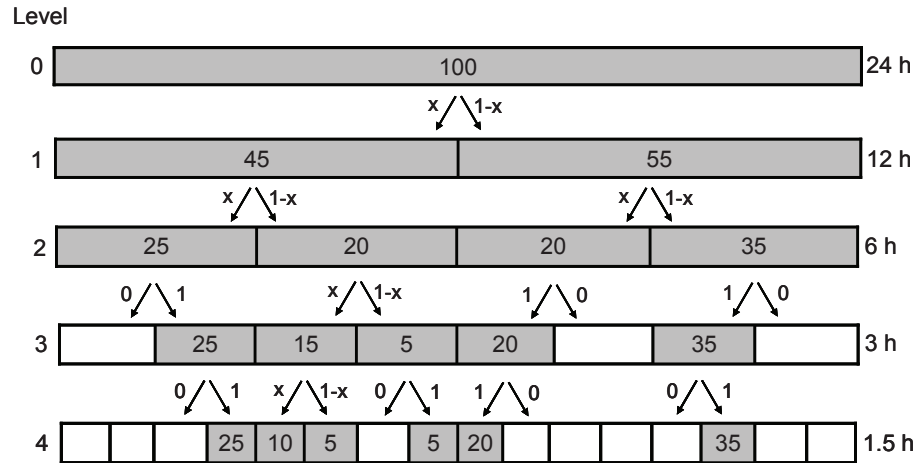


# HESSD

10, 10379–10417, 2013

## Derived flood frequency analysis

U. Haberlandt and  
I. Radtke



**Fig. 2.** Scheme of a multiplicative random cascade model (modified after Olsson, 1998).

Title Page

Abstract

Introduction

Conclusions

References

Tables

Figures

⏪

⏩

◀

▶

Back

Close

Full Screen / Esc

Printer-friendly Version

Interactive Discussion



# HESSD

10, 10379–10417, 2013

## Derived flood frequency analysis

U. Haberlandt and  
I. Radtke

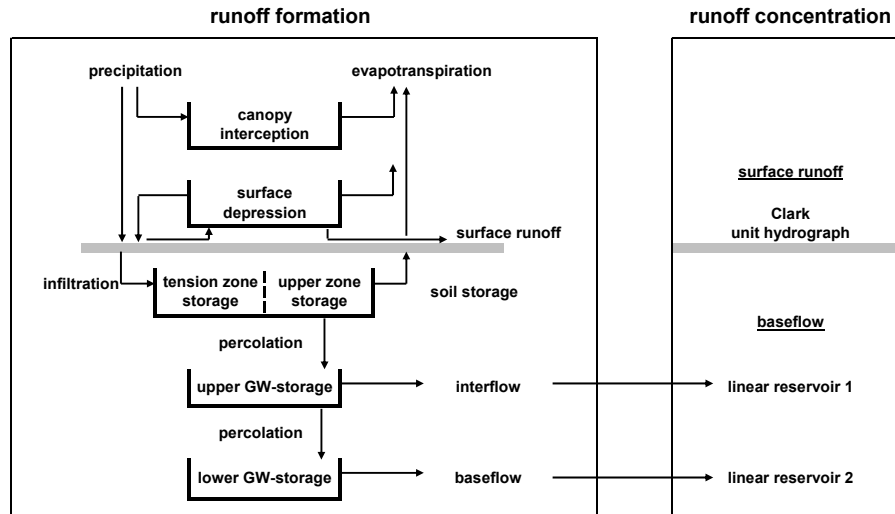


Fig. 3. HEC-HMS model (adapted from Feldmann, 2000).

[Title Page](#)

[Abstract](#) | [Introduction](#)

[Conclusions](#) | [References](#)

[Tables](#) | [Figures](#)

[◀](#) | [▶](#)

[◀](#) | [▶](#)

[Back](#) | [Close](#)

[Full Screen / Esc](#)

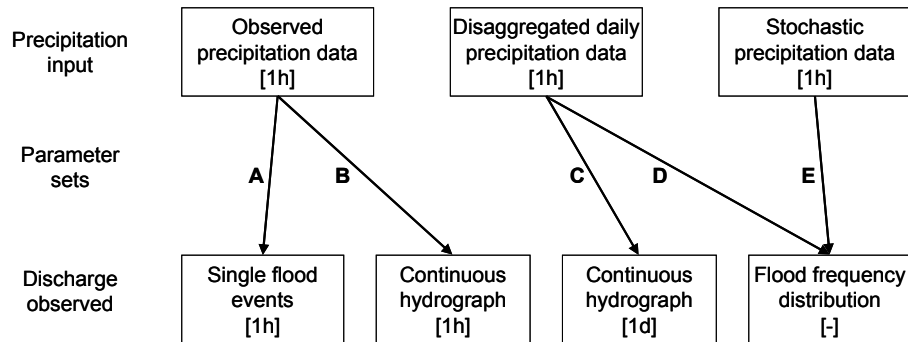
[Printer-friendly Version](#)

[Interactive Discussion](#)



## Derived flood frequency analysis

U. Haberlandt and  
I. Radtke

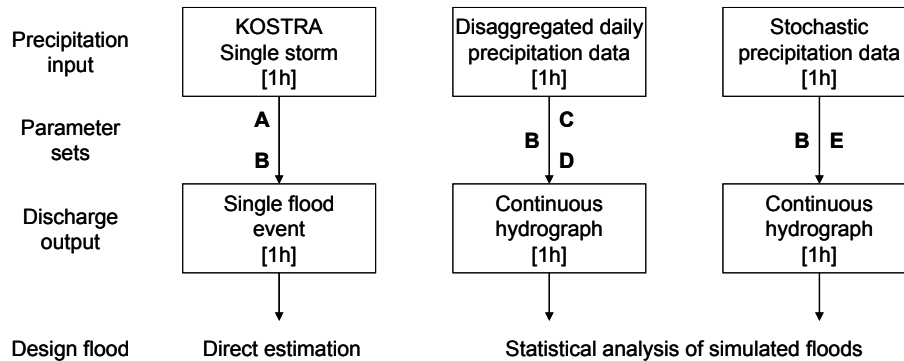


**Fig. 4.** Calibration strategies leading to the parameter sets A to E; the temporal resolution of the data is given in brackets.

[Title Page](#)
[Abstract](#)
[Introduction](#)
[Conclusions](#)
[References](#)
[Tables](#)
[Figures](#)
[◀](#)
[▶](#)
[◀](#)
[▶](#)
[Back](#)
[Close](#)
[Full Screen / Esc](#)
[Printer-friendly Version](#)
[Interactive Discussion](#)


## Derived flood frequency analysis

U. Haberlandt and  
I. Radtke



**Fig. 5.** Strategies for the estimation of design floods; the temporal resolution of the data is given in brackets.

Title Page

Abstract Introduction

Conclusions References

Tables Figures

◀ ▶

◀ ▶

Back Close

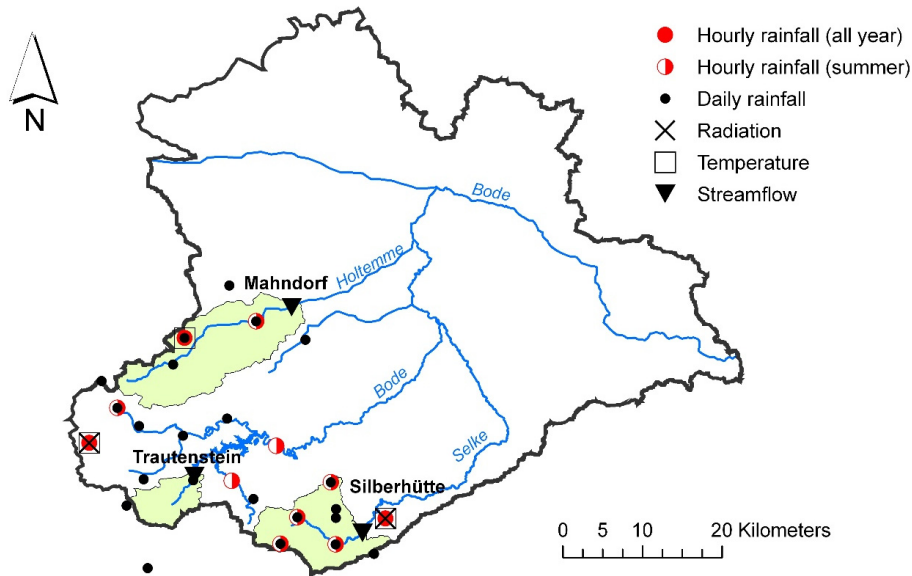
Full Screen / Esc

Printer-friendly Version

Interactive Discussion







**Fig. 6.** Study area with the three selected catchments, precipitation stations, climate stations and stream flow gauges.

## Derived flood frequency analysis

U. Haberlandt and  
I. Radtke

Title Page

Abstract

Introduction

Conclusions

References

Tables

Figures

⏪

⏩

◀

▶

Back

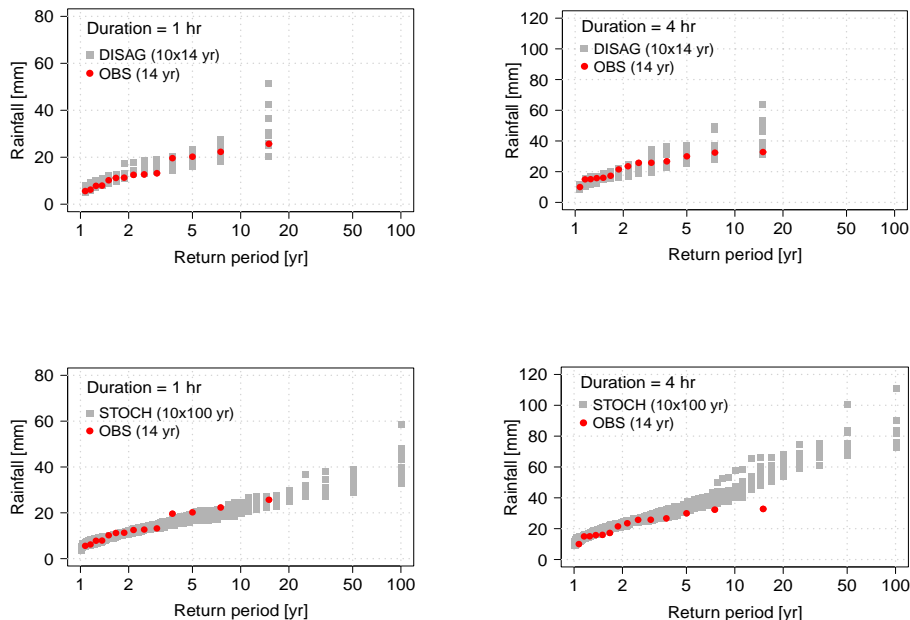
Close

Full Screen / Esc

Printer-friendly Version

Interactive Discussion

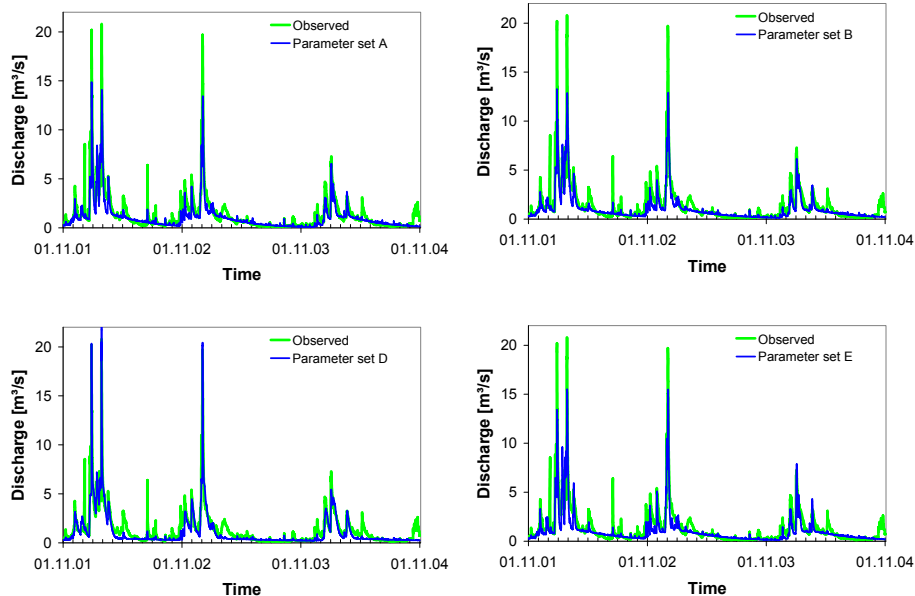


Derived flood  
frequency analysisU. Haberlandt and  
I. Radtke

**Fig. 7.** Empirical probability distributions of annual maximum precipitation from observed (OBS), disaggregated (DISAG, top row) and stochastically generated rainfall (STOCH, bottom row) for the station Harzgerode for 1 h and 4 h durations.

[Title Page](#)[Abstract](#)[Introduction](#)[Conclusions](#)[References](#)[Tables](#)[Figures](#)[◀](#)[▶](#)[◀](#)[▶](#)[Back](#)[Close](#)[Full Screen / Esc](#)[Printer-friendly Version](#)[Interactive Discussion](#)

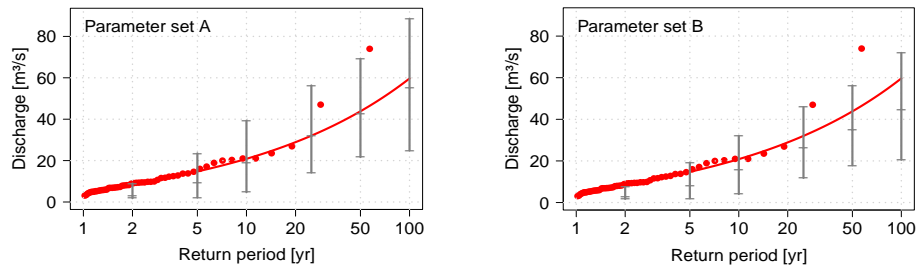
## Derived flood frequency analysis

U. Haberlandt and  
I. Radtke

**Fig. 8.** Simulated hydrographs using four different parameter sets A, B, D and E based on observed hourly precipitation for the validation period from November 2001 to October 2004.

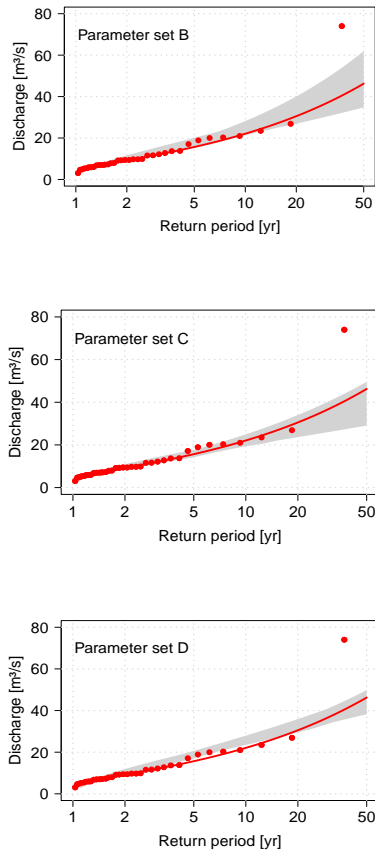
[Title Page](#)[Abstract](#)[Introduction](#)[Conclusions](#)[References](#)[Tables](#)[Figures](#)[◀](#)[▶](#)[◀](#)[▶](#)[Back](#)[Close](#)[Full Screen / Esc](#)[Printer-friendly Version](#)[Interactive Discussion](#)

## Derived flood frequency analysis

U. Haberlandt and  
I. Radtke

**Fig. 9.** Range and median of simulated design flows representing the 90 %-confidence interval against observed peak flows using KOSTRA rainfall for the Silberhütte catchment; left: parameter set A, right: parameter set B.

[Title Page](#)[Abstract](#)[Introduction](#)[Conclusions](#)[References](#)[Tables](#)[Figures](#)[◀](#)[▶](#)[◀](#)[▶](#)[Back](#)[Close](#)[Full Screen / Esc](#)[Printer-friendly Version](#)[Interactive Discussion](#)



**Fig. 10.** Range of simulated design flows representing the 90%-confidence interval against observed peak flows using disaggregated precipitation for the Silberhütte catchment for different parameter sets.

## Derived flood frequency analysis

U. Haberlandt and  
I. Radtke

Title Page

Abstract

Introduction

Conclusions

References

Tables

Figures

◀

▶

◀

▶

Back

Close

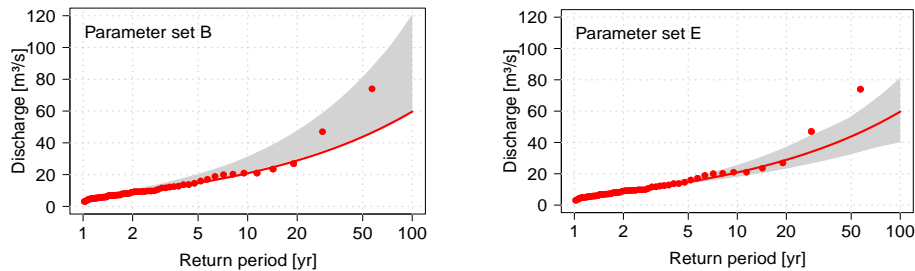
Full Screen / Esc

Printer-friendly Version

Interactive Discussion



## Derived flood frequency analysis

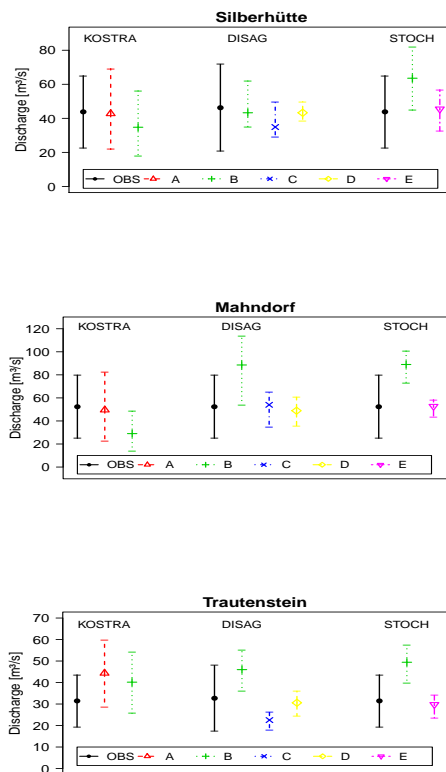
U. Haberlandt and  
I. Radtke

**Fig. 11.** Range of simulated design flows representing the 90 %-confidence interval against observed peak flows using stochastic precipitation for the Silberhütte catchment for different parameter sets.

[Title Page](#)[Abstract](#)[Introduction](#)[Conclusions](#)[References](#)[Tables](#)[Figures](#)[◀](#)[▶](#)[◀](#)[▶](#)[Back](#)[Close](#)[Full Screen / Esc](#)[Printer-friendly Version](#)[Interactive Discussion](#)

## Derived flood frequency analysis

U. Haberlandt and  
I. Radtke



**Fig. 12.** Estimated 50 yr floods with 90%-confidence bands for the three catchments and the five data sets (A to E) obtained from the different calibration strategies using statistical design rainfall (KOSTRA), disaggregated daily precipitation (DISAG) and stochastically generated precipitation (STOCH) in comparison to flood estimation based on observed annual maximum flows (OBS).

[Title Page](#)
[Abstract](#)
[Introduction](#)
[Conclusions](#)
[References](#)
[Tables](#)
[Figures](#)
[⏪](#)
[⏩](#)
[⏴](#)
[⏵](#)
[Back](#)
[Close](#)
[Full Screen / Esc](#)
[Printer-friendly Version](#)
[Interactive Discussion](#)
