



Supplement of

Can streamflow observations constrain snow mass reconstructions? Lessons from two synthetic numerical experiments

Pau Wiersma et al.

Correspondence to: Pau Wiersma (pau.wiersma@unil.ch)

The copyright of individual parts of the supplement might differ from the article licence.

S1. Streamflow and SWE performance metrics

Below figures show the equivalent of figure 4 for all other retained SWE performance metrics. The streamflow results shown in figures 4a and 4c are omitted, only the FS and SS SWE performance metric results are shown.

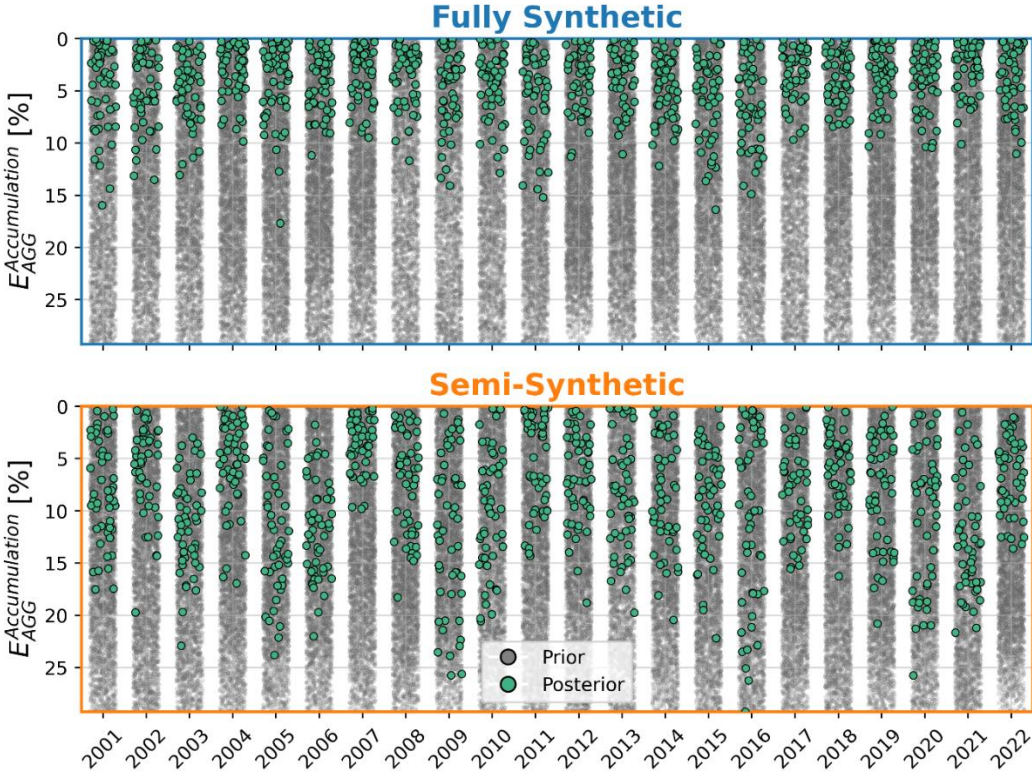


Figure S1

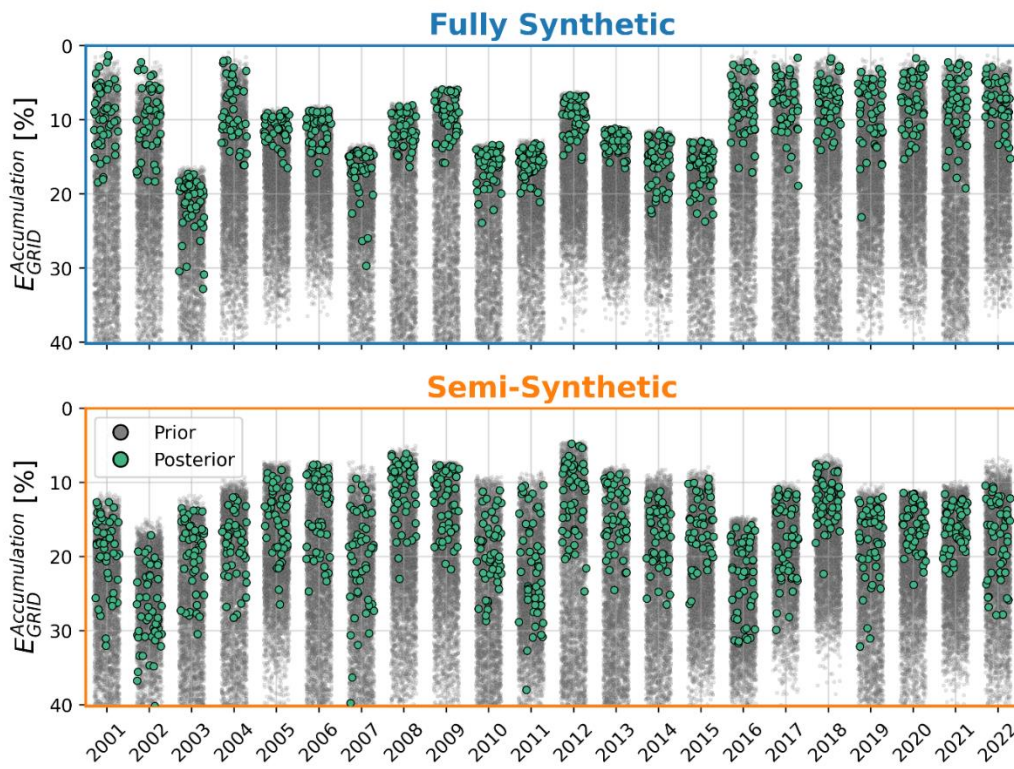


Figure S2

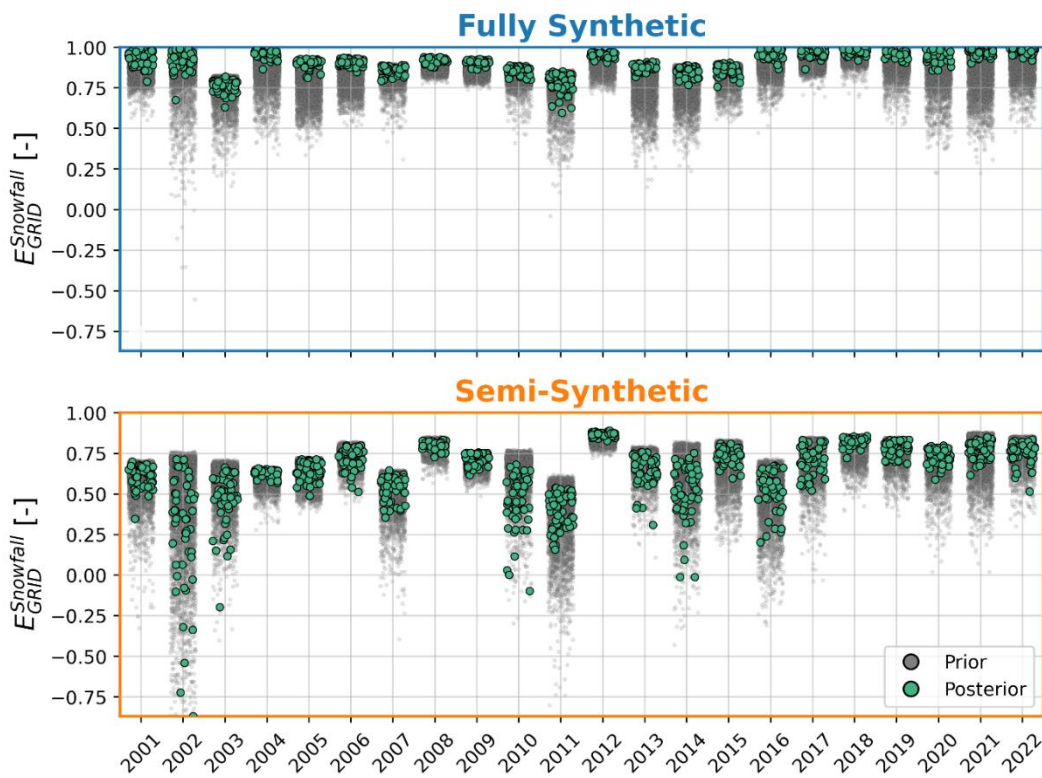


Figure S3

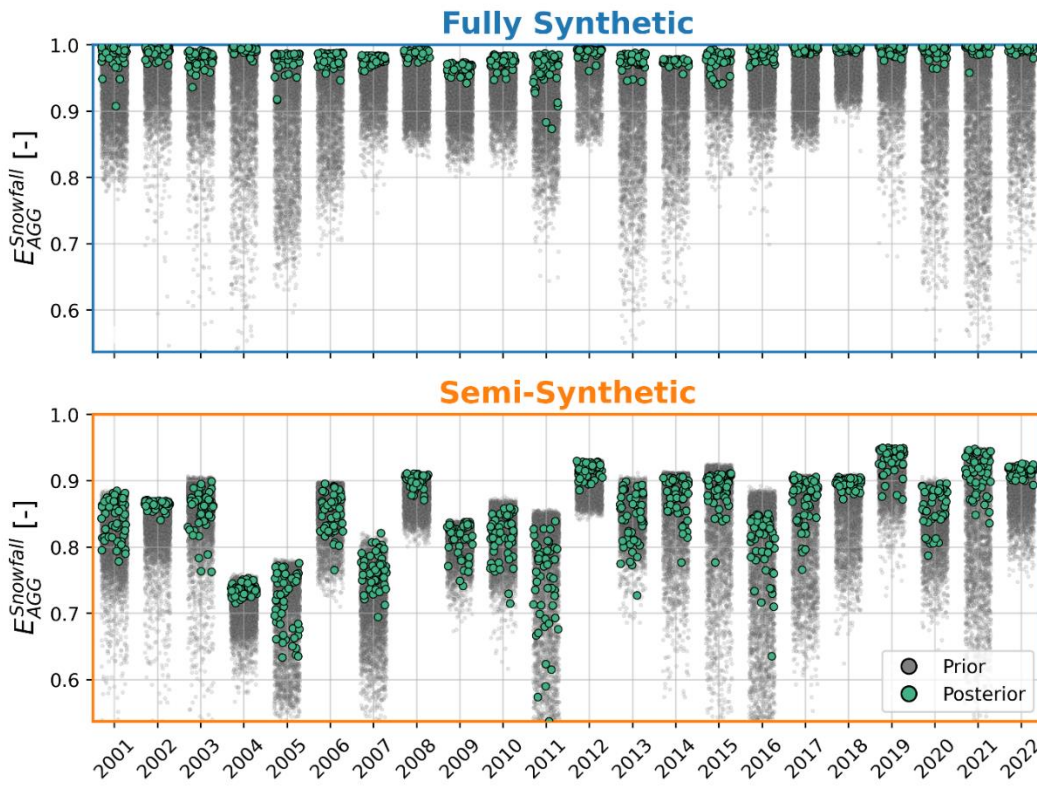


Figure S4

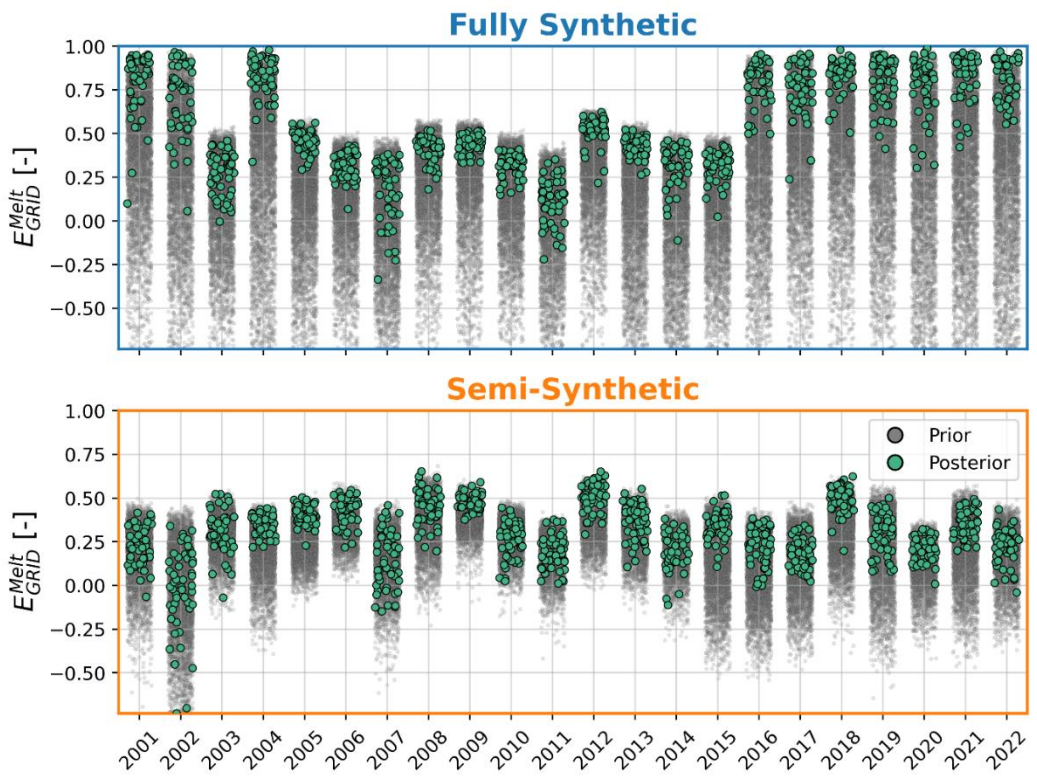


Figure S5

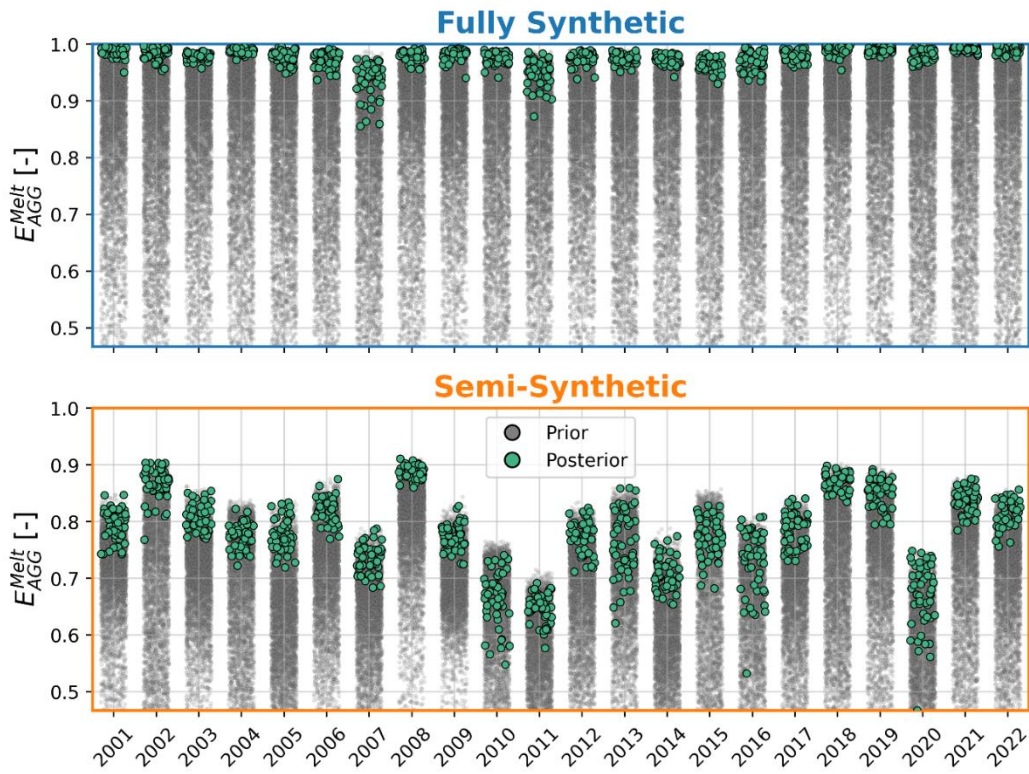


Figure S6

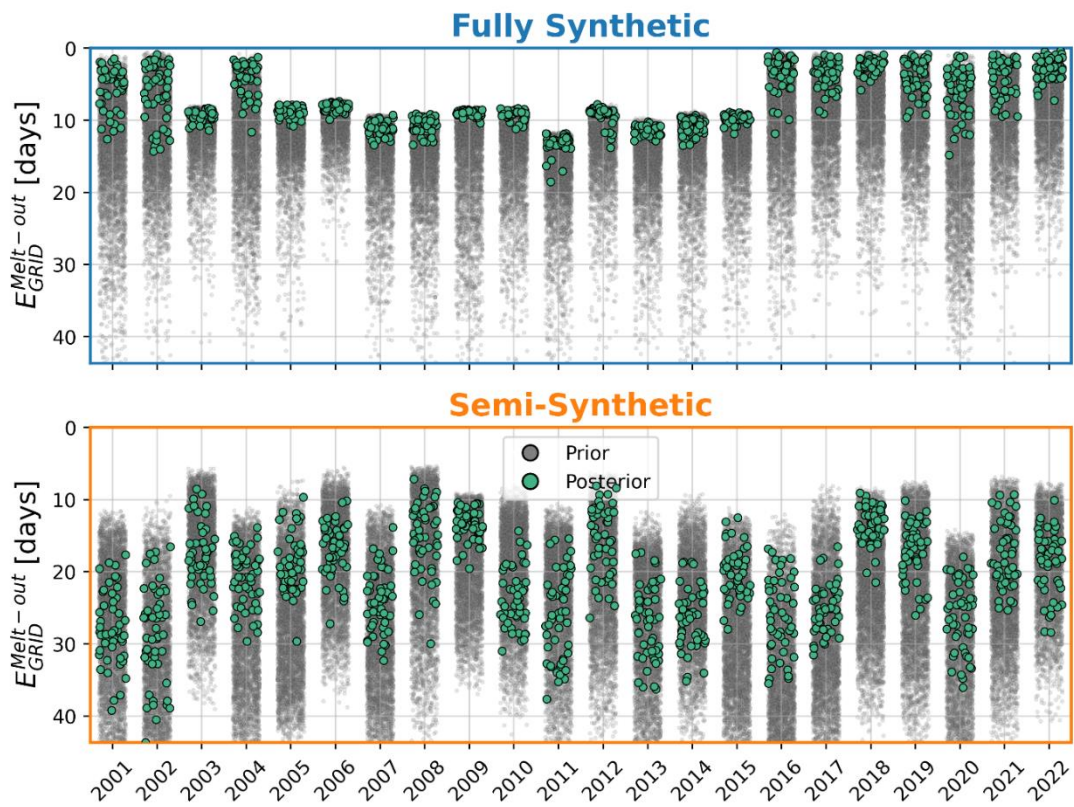


Figure S7

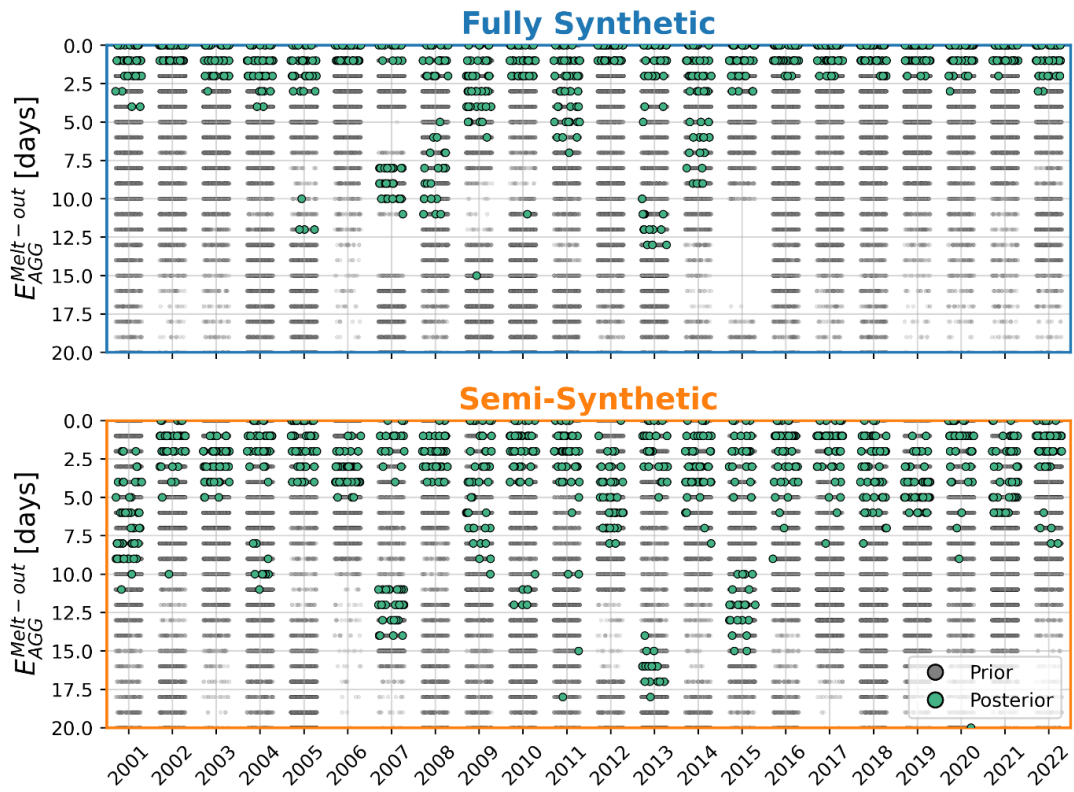


Figure S8

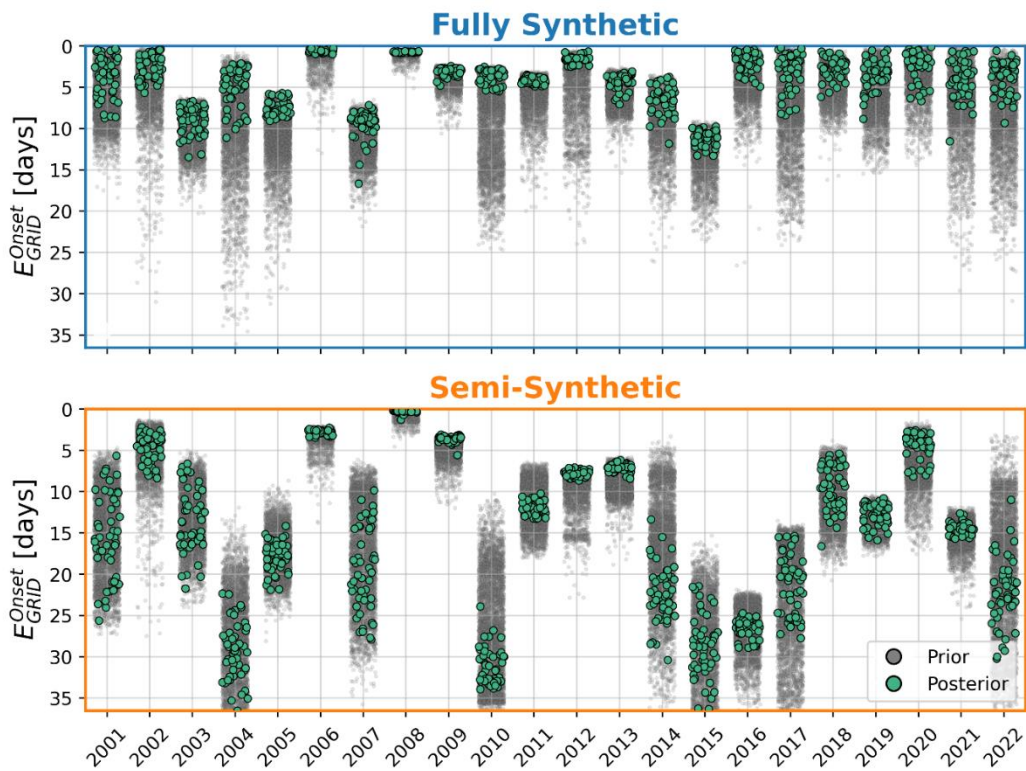


Figure S9

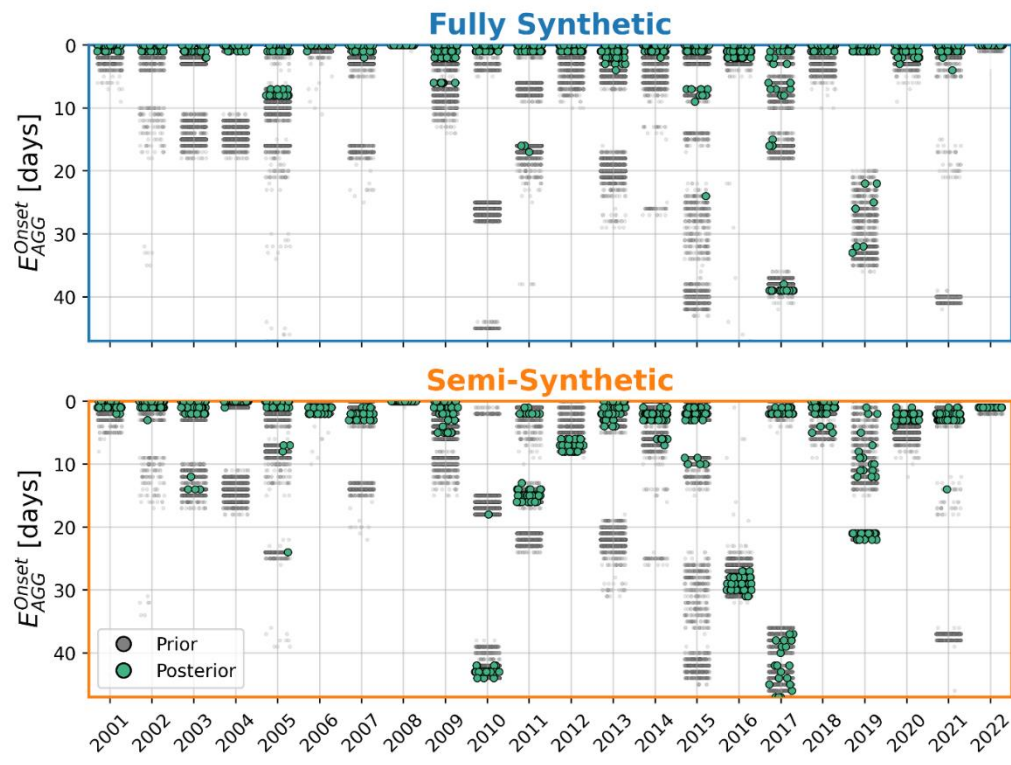


Figure S10